

TRINITY GRAMMER SCHOOL - THE RENEWAL PROJECT

Legend

SUMMER HILL, NSW

DRAWING SCHEDULE

DRAWING NO.	DRAWING TITLE
000	COVER SHEET
100	LANDSCAPE MASTERPLAN
200	LANDSCAPE PLAN
201	LANDSCAPE PLAN
202	LANDSCAPE PLAN
203	LANDSCAPE PLAN
204	LANDSCAPE PLAN
205	LANDSCAPE PLAN
206	LANDSCAPE PLAN
207	LANDSCAPE PLAN
601	LANDSCAPE DETAILS

LOCATION PLAN

SCALE: NTS



PLANTING SCHEDULE

18-586 TRINITY GRAMMAR PLANT SCHEDULE					
CODE	BOTANIC NAME	COMMON NAME	MATURE SIZE (h x w) (m)	PROPOSED POT SIZE	QUANTITY
TREES & PALMS					
Ar	<i>Agathis robusta</i>	Smooth-bark kauri	30 x 10	400L	13
Bi	<i>Banksia integrifolia</i>	Coast Banksia	15 x 6	200L	3
Cf	<i>Corymbia ficifolia</i> 'Wildfire'	Red Flowering Gum	6 x 4	200L	2
Ca	<i>Cyathea australis</i>	Rough Tree Fern	5 x 2	200L	4
Eci	<i>Eucalyptus cinerea</i>	Silver Shadow	12 x 8	200L	14
Euh	<i>Eucalyptus haemastoma</i>	Broad-leaved scribbly gum	15 x 6	100L	8
Elr	<i>Eucalyptus leucocylon</i> 'Rosea'	Red Flowering Yellow Gum	15 x 7	200L	2
Evi	<i>Eucalyptus viminalis</i>	Snow Queen	8 x 4	200L	4
Mg	<i>Magnolia grandiflora</i> 'Little Gem'	Dwarf Magnolia	8 x 5	200L	10
Mel	<i>Melaleuca leucadendra</i>	Weeping Paperbark	30 x 20	400L	2
Li	<i>Lagerstroemia indica</i>	Crepe Myrtle	6 x 4	200L	7
Tl	<i>Tristania lutea</i> 'Luscious'	Luscious Water Gum	10 x 5	200L	3
SHRUBS					
Ass	<i>Acmena smithii</i> 'Lemon'	Dwarf Lilly Pilly	3 x 2	45L	175
Bux	<i>Buxus</i>	Japanese Box	1 x 1	300 mm	20
GRASSES					
Dc	<i>Dianella caerulea</i>	Flax Lily	0.5 x 0.5	200 mm	200
Ll	<i>Lomandra longifolia</i>	Spiny Headed Mat Rush	1 x 1	150mm	220
MP1 - AUSTRALIAN GARDEN PLANTING MATRIX					
As	<i>Adenanthos sericeus</i>	Woolly Bush	5 x 1.5	45L	1000
Ani	<i>Anigozanthos</i>	Kangaroo Paw	1 x 1	300 mm	1485
Cal	<i>Correa alba</i>	White Correa	1.5 x 1.5	45L	480
Pl	<i>Poa labillardierei</i>	Common Tussock-grass	1.2 x 1	300 mm	1410
Xr	<i>Xanthorrhoea resinosa</i>	Grass Tree	Varies x 1.5	45L	178
Bsp	<i>Banksia spinulosa</i> 'Birthday Candles'	Giant Candles Banksia	0.5 x 1	150mm	1180
Cag	<i>Casuarina glauca</i>	Cousin It	0.2 x 2	300 mm	1065
Cg	<i>Carpobrotus glaucescens</i>	Pig Face	0.25 x spreading	150mm	355
MP2 - NATURE PLAY PLANTING MATRIX					
As	<i>Adenanthos sericeus</i>	Woolly Bush	5 x 1.5	45L	140
Ani	<i>Anigozanthos</i>	Kangaroo Paw	1 x 1	300 mm	250
Cal	<i>Correa alba</i>	White Correa	1.5 x 1.5	45L	80
Dc	<i>Dianella caerulea</i>	Flax Lily	0.5 x 0.5	200 mm	240
Lt	<i>Lomandra 'Tanika'</i>	Mat Rush	0.6 x 0.6	300 mm	300
Pa	<i>Pennisetum alopecuroides</i>	Swamp Foxtail	1 x 1	300 mm	60
Cag	<i>Casuarina glauca</i>	Cousin It	0.2 x 2	300 mm	175
Csp	<i>Chrysocephalum semipapposum</i>	Clustered Everlasting	0.3 x spreading	150mm	120
Wff	<i>Westringia fruticosa</i> 'Flat n Fruity'	Pig Face	0.3 x spreading	150mm	62
MP3 - SUBTROPICAL PLANTING MATRIX					
Aa	<i>Asplenium australasicum</i>	Birds Nest Fern	1.5 x 1.5	45L	220
Cag	<i>Casuarina glauca</i>	Cousin It	0.2 x 2	300 mm	180
Dc	<i>Dianella caerulea</i>	Flax Lily	0.5 x 0.5	300 mm	360
Ljr	<i>Liriope muscari</i> 'Just Right'	Lilyturf	0.45 x 0.45	300 mm	360
Hv	<i>Hardenbergia violacea</i>	Purple coral pea	1 x spreading	150mm	220
Tgr	<i>Thunbergia grandiflora</i>	Blue Thunbergia	0.3 x spreading	150mm	145
MP4 - FORMAL PLANTING MATRIX					
Bim	<i>Baeckea imbricata</i>	Heath Myrtle	1 x 1	300 mm	175
En	<i>Eremophila nivea</i>	Emu Bush	2 x 2	300 mm	350
Tf	<i>Teucrium fruticans</i>	Germander	1.5 x 1.5	200mm	630
Dsf	<i>Dichondra repens</i> 'Silver Falls'	Kidney Weed	0.2 x spreading	150mm	1270
Ljr	<i>Liriope muscari</i> 'Just Right'	Lilyturf	0.45 x 0.45	300 mm	620
Sr	<i>Salvia rosmarinus</i>	Rosemary	2 x 1	300 mm	460
Sch	<i>Santolina Chamaecyparissus</i>	Lavender Cotton	0.6 x .03	300 mm	740
MP5 - PARKLAND PLANTING MATRIX					
Cal	<i>Correa alba</i>	White Correa	1.5 x 1.5	45L	40
Ljr	<i>Liriope muscari</i> 'Just Right'	Lilyturf	0.45 x 0.45	300 mm	54
Pa	<i>Pennisetum alopecuroides</i>	Swamp Foxtail	1 x 1	300 mm	78
Hs	<i>Hibbertia scandens</i>	Snake Vine	0.15 x spreading	150mm	40
Sch	<i>Santolina Chamaecyparissus</i>	Lavender Cotton	0.6 x .03	300 mm	26
Hh	<i>Hedera helix</i>	Ivy	0.5 x Spreading	150mm	32
MP5 - PARKLAND PLANTING MATRIX					
Dsf	<i>Dichondra repens</i> 'Silver Falls'	Kidney Weed	0.2 x spreading	150mm	100
Fp	<i>Ficus pumila</i>	Creeping Fig	0.25 x spreading	150mm	50
Pt	<i>Pittosporum tobira</i>	Dwarf Pittosporum	1.5 x 1	300 mm	55
Px	<i>Philodendron 'Xanadu'</i>	Xanadu	1 x 1	150mm	58
Rp	<i>Rosmarinus prostratus</i>	Creeping Rosemary	0.6 x 1	150mm	40
Tj	<i>Trachelospermum jasminoides</i>	Star Jasmine	0.25 x 1	150mm	65

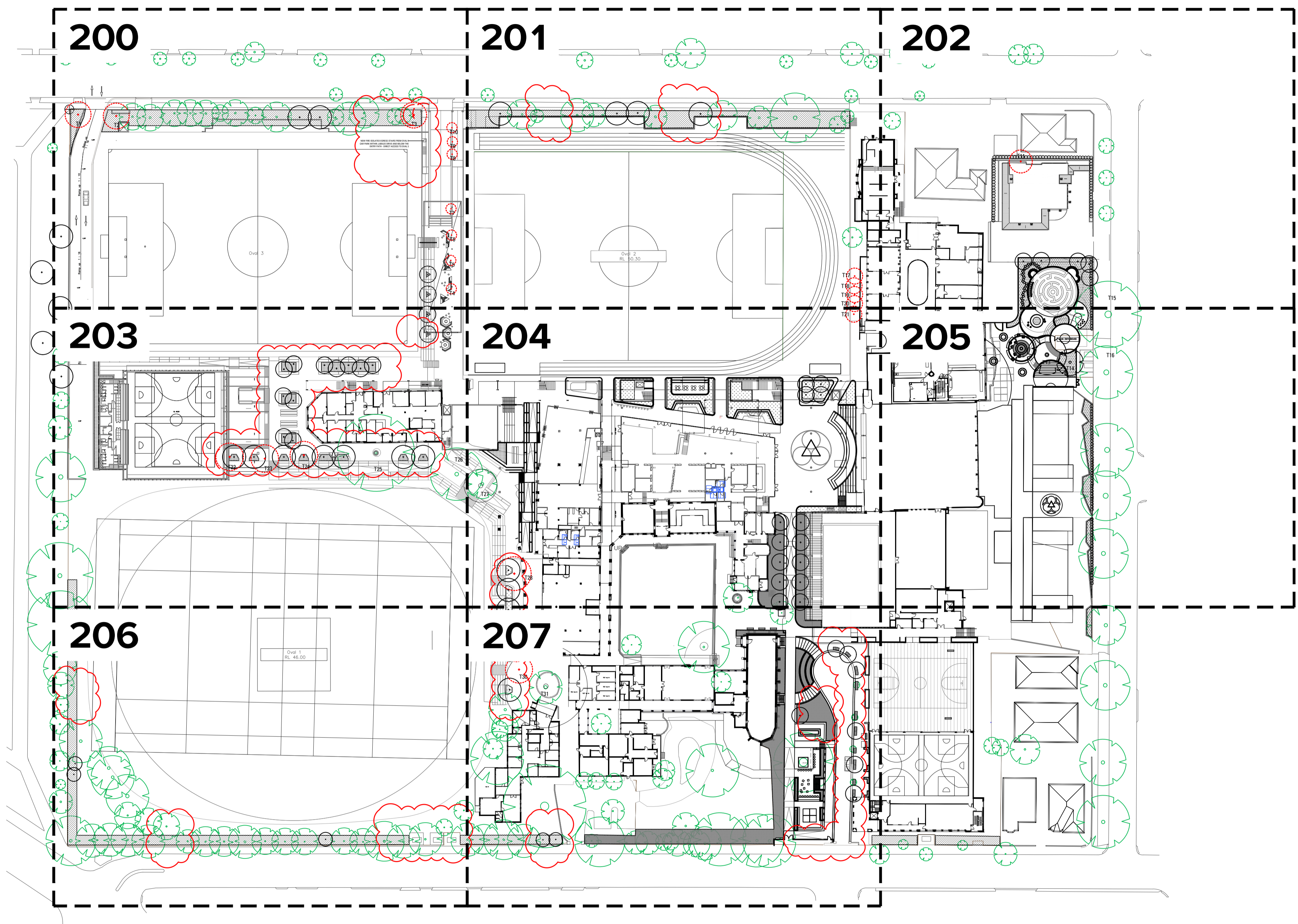
Key Plan

New South Wales Government
Independent Planning Commission




This plan satisfies the deferred commencement condition.

Application No: SSD-10371 Signed: AC

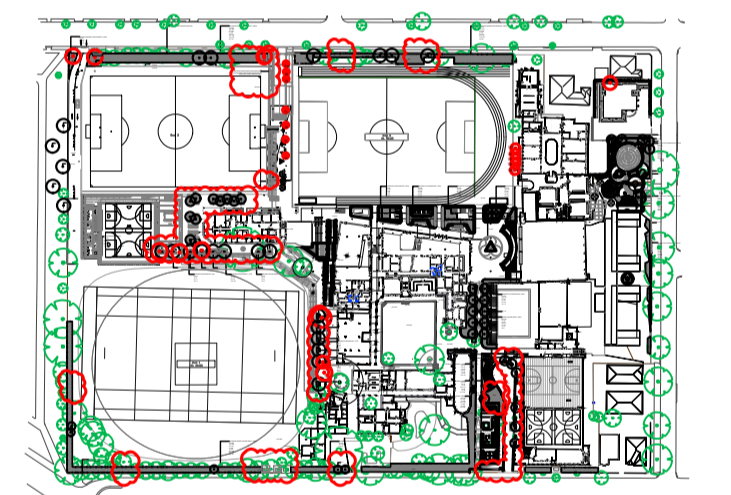
Granted on: 18 January 2022 Sheet no: 1 of 11



Legend

- SOFTWORKS**
-  AUSTRALIAN GARDEN PLANTING MATRIX
Refer Landscape Specification
 -  NATURE PLAY PLANTING MATRIX
Refer Landscape Specification
 -  SUBTROPICAL GARDEN MATRIX
Refer Landscape Specification
 -  CEREMONIAL PALETTE MATRIX
Refer Landscape Specification
 -  PARKLAND PALETTE MATRIX
Refer Landscape Specification
 -  TREES TO BE REMOVED
Refer Arborist Report
 -  TREES TO BE RETAINED
Refer Arborist Report
 -  PROPOSED TREES

Key Plan

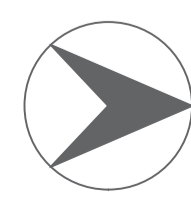












New South Wales Government
Independent Planning Commission

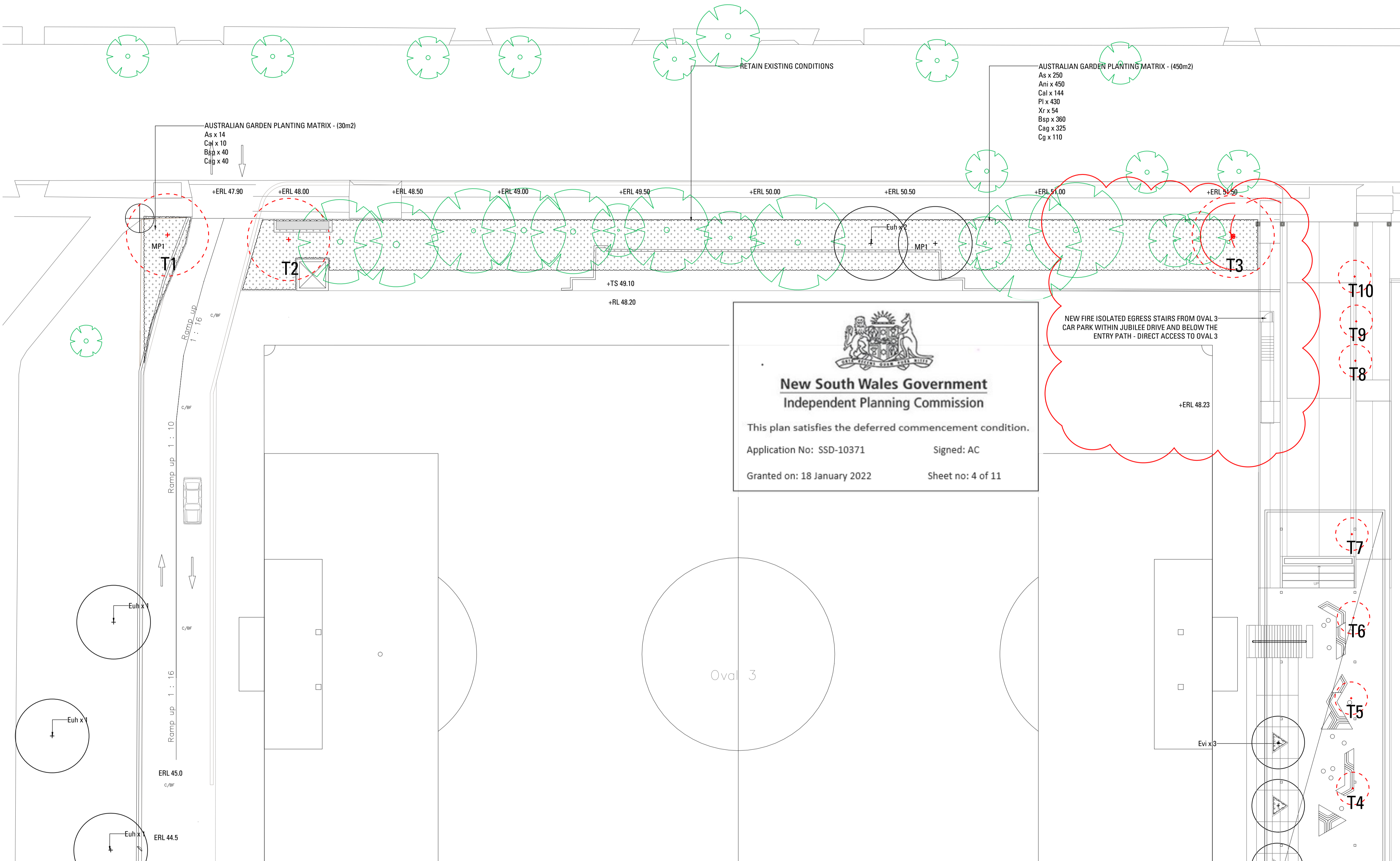
This plan satisfies the deferred commencement condition.

Application No: SSD-10371	Signed: AC
Granted on: 18 January 2022	Sheet no: 2 of 11



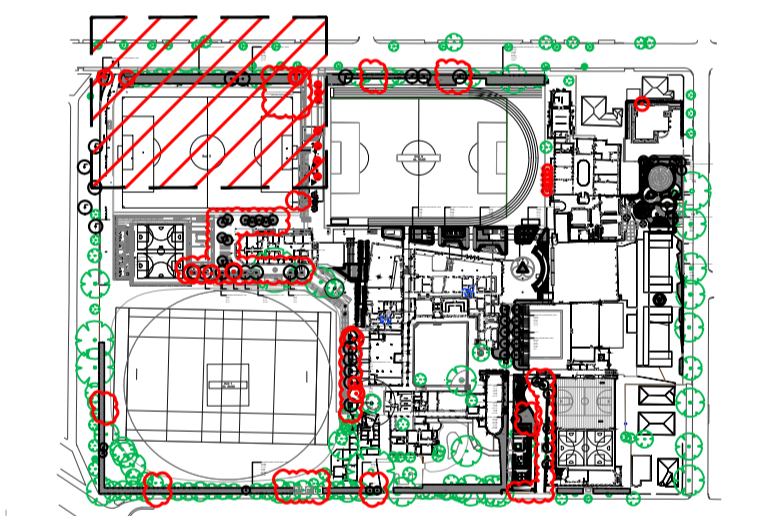
Legend

- SOFTWORKS**
-  AUSTRALIAN GARDEN PLANTING MATRIX
Refer Landscape Specification
 -  NATURE PLAY PLANTING MATRIX
Refer Landscape Specification
 -  SUBTROPICAL GARDEN MATRIX
Refer Landscape Specification
 -  CEREMONIAL PALETTE MATRIX
Refer Landscape Specification
 -  PARKLAND PALETTE MATRIX
Refer Landscape Specification
 -  TREES TO BE REMOVED
Refer Arborist Report
 -  TREES TO BE RETAINED
Refer Arborist Report
 -  PROPOSED TREES

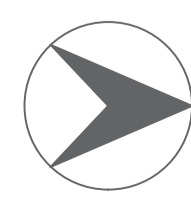



New South Wales Government
Independent Planning Commission
 This plan satisfies the deferred commencement condition.
 Application No: SSD-10371 Signed: AC
 Granted on: 18 January 2022 Sheet no: 4 of 11

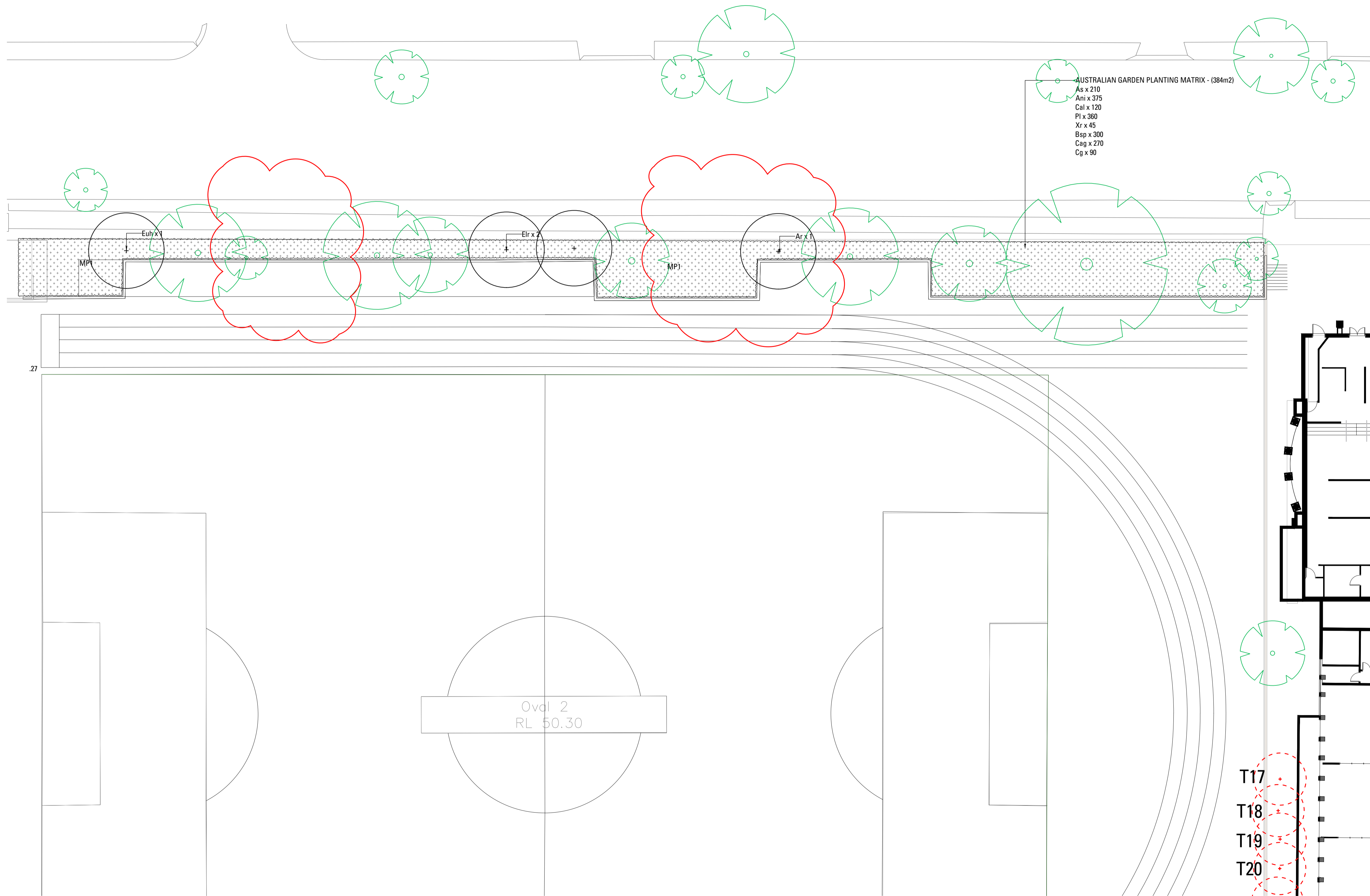
Key Plan




New South Wales Government
Independent Planning Commission
 This plan satisfies the deferred commencement condition.
 Application No: SSD-10371 Signed: AC
 Granted on: 18 January 2022 Sheet no: 3 of 11



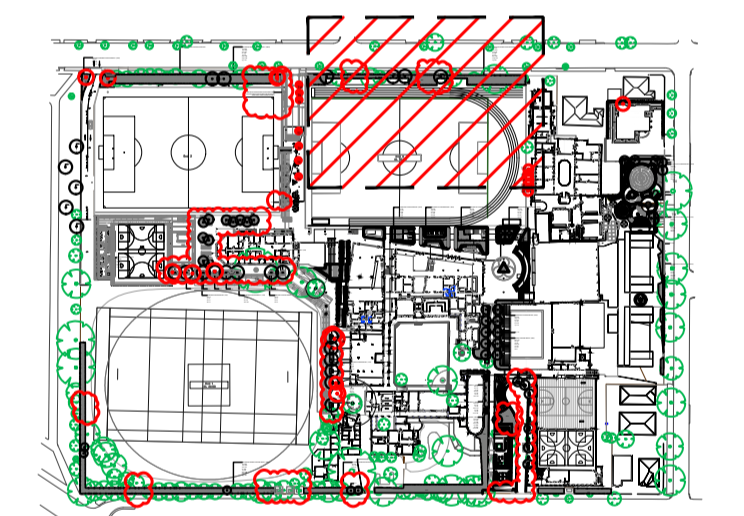
Copyright remains the property of Arcadia Landscape Architecture Pty Ltd. Use only figured dimensions. Any other required dimensions are to be referred to and supplied by the landscape architect. All discrepancies to be referred to the project manager and Arcadia Landscape Architecture Pty Ltd prior to construction. Ensure compliance with the Building Code of Australia and all relevant Australian Standards and Authorities



Legend

- SOFTWORKS**
- AUSTRALIAN GARDEN PLANTING MATRIX
Refer Landscape Specification
 - NATURE PLAY PLANTING MATRIX
Refer Landscape Specification
 - SUBTROPICAL GARDEN MATRIX
Refer Landscape Specification
 - CEREMONIAL PALETTE MATRIX
Refer Landscape Specification
 - PARKLAND PALETTE MATRIX
Refer Landscape Specification
 - TREES TO BE REMOVED
Refer Arborist Report
 - TREES TO BE RETAINED
Refer Arborist Report
 - PROPOSED TREES

Key Plan



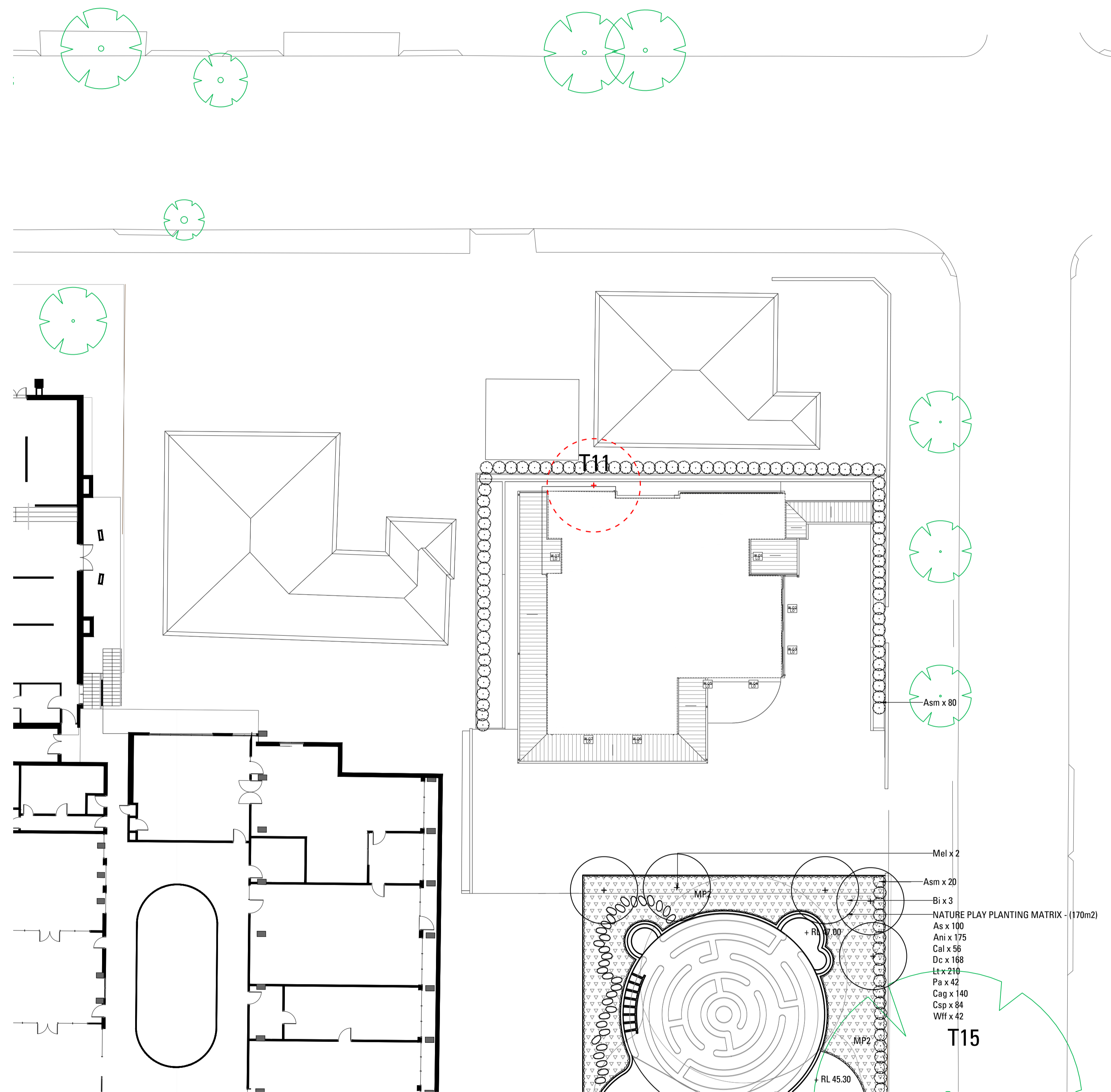
New South Wales Government
Independent Planning Commission

This plan satisfies the deferred commencement condition.

Application No: SSD-10371 Signed: AC

Granted on: 18 January 2022 Sheet no: 4 of 11

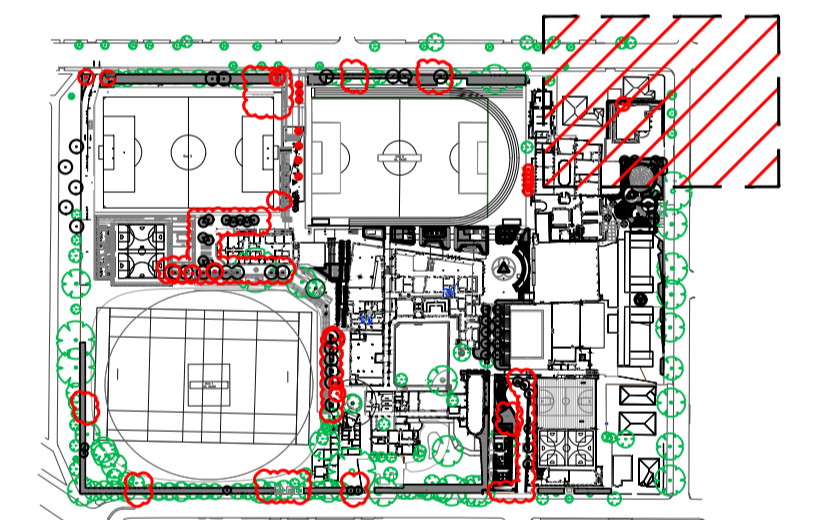




Legend

- SOFTWORKS**
- AUSTRALIAN GARDEN PLANTING MATRIX
Refer Landscape Specification
 - NATURE PLAY PLANTING MATRIX
Refer Landscape Specification
 - SUBTROPICAL GARDEN MATRIX
Refer Landscape Specification
 - CEREMONIAL PALETTE MATRIX
Refer Landscape Specification
 - PARKLAND PALETTE MATRIX
Refer Landscape Specification
 - TREES TO BE REMOVED
Refer Arborist Report
 - TREES TO BE RETAINED
Refer Arborist Report
 - PROPOSED TREES

Key Plan





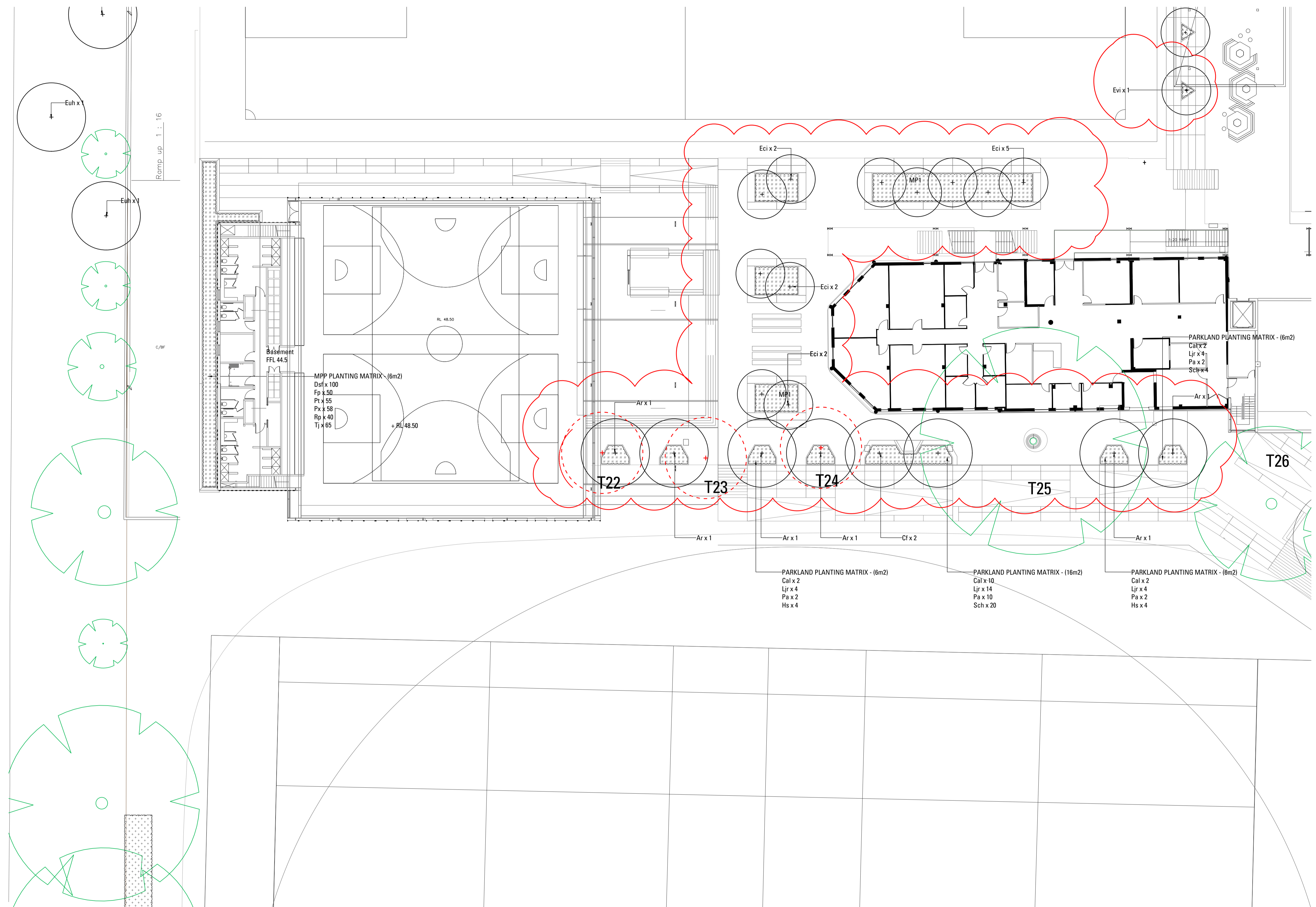
New South Wales Government
Independent Planning Commission

This plan satisfies the deferred commencement condition.

Application No: SSD-10371 Signed: AC

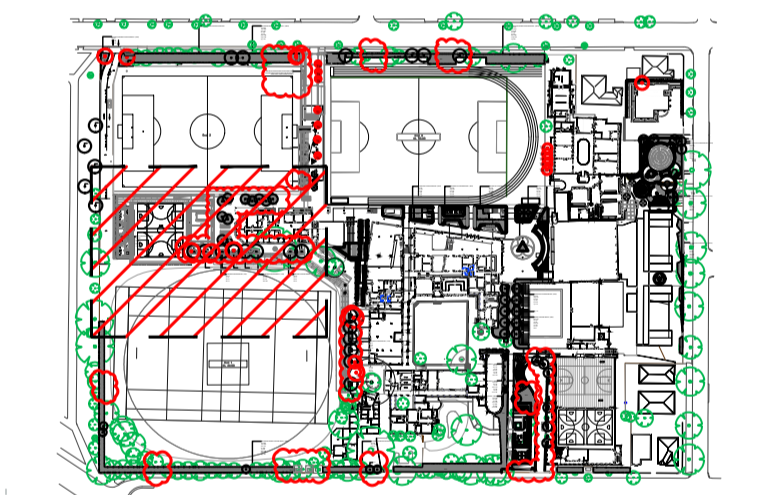
Granted on: 18 January 2022 Sheet no: 5 of 11





- ### Legend
- SOFTWORKS**
- MP1** AUSTRALIAN GARDEN PLANTING MATRIX
Refer Landscape Specification
 - MP2** NATURE PLAY PLANTING MATRIX
Refer Landscape Specification
 - MPS** SUBTROPICAL GARDEN MATRIX
Refer Landscape Specification
 - MP4** CEREMONIAL PALETTE MATRIX
Refer Landscape Specification
 - MPS** PARKLAND PALETTE MATRIX
Refer Landscape Specification
 - Trees to be removed**
Refer Arborist Report
 - Trees to be retained**
Refer Arborist Report
 - Proposed trees**

Key Plan



New South Wales Government
Independent Planning Commission

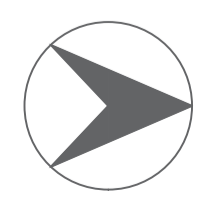
This plan satisfies the deferred commencement condition.

Application No: SSD-10371 Signed: AC

Granted on: 18 January 2022 Sheet no: 6 of 11



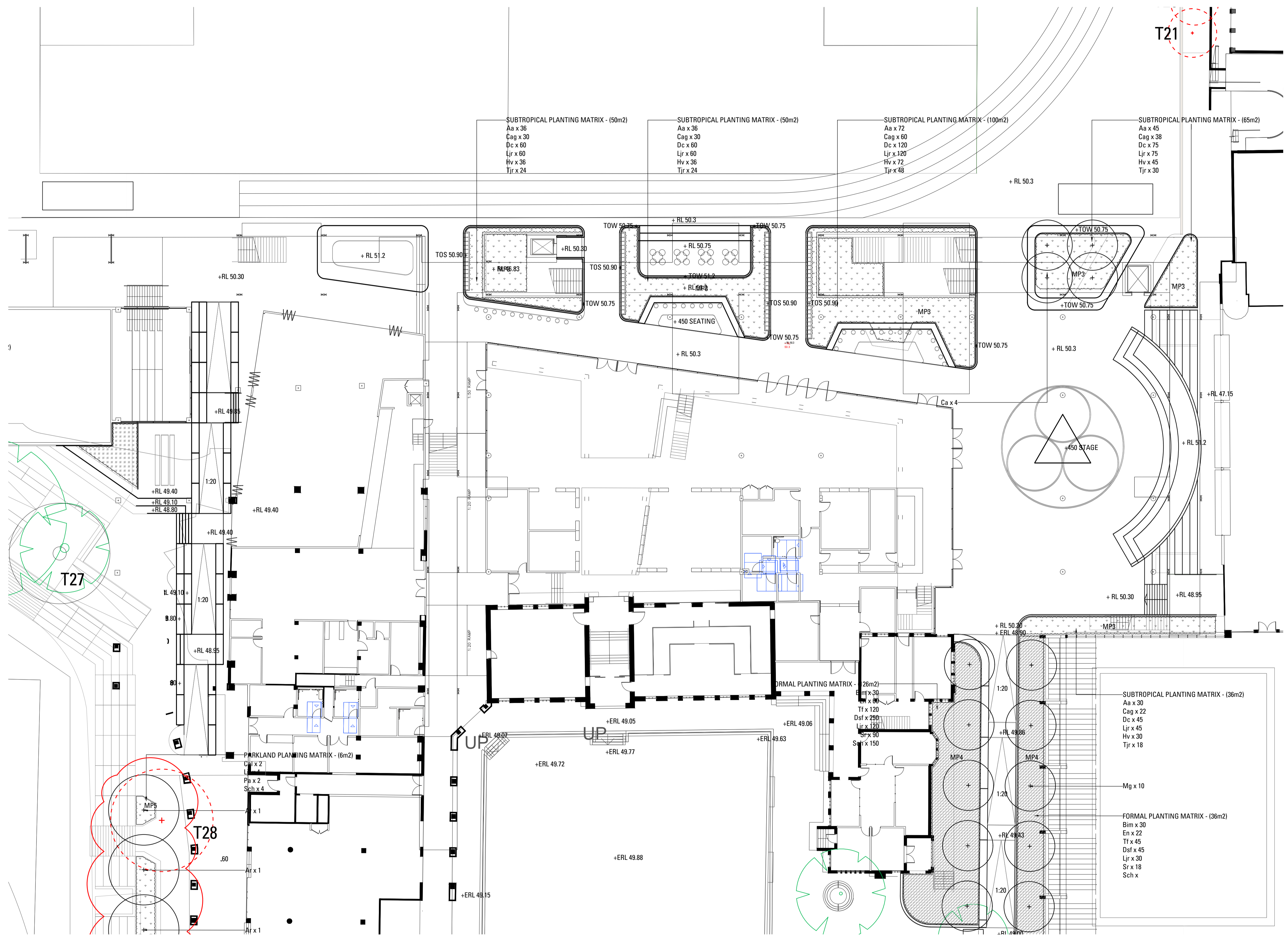
TRINITY GRAMMER SCHOOL/SUMMER HILL
STATE SIGNIFICANT DEVELOPMENT APPLICATION



PREPARED BY Arcadia Landscape Architecture
CLIENT Trinity Grammar School
ARCHITECT PMDL

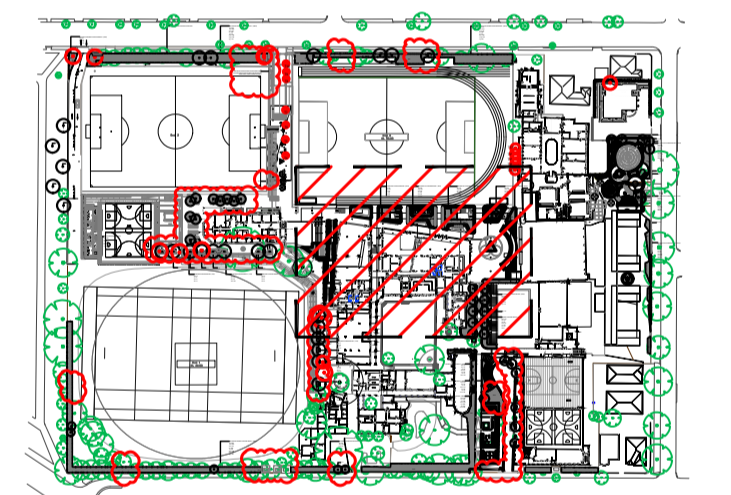
DATE Dec. 2021
SCALE 1:200 @ A1
ISSUE E

Copyright remains the property of Arcadia Landscape Architecture Pty Ltd. Use only figured dimensions. Any other required dimensions are to be referred to and supplied by the landscape architect. All discrepancies to be referred to the project manager and Arcadia Landscape Architecture Pty Ltd prior to construction. Ensure compliance with the Building Code of Australia and all relevant Australian Standards and Authorities



- Legend**
- SOFTWORKS**
- AUSTRALIAN GARDEN PLANTING MATRIX
Refer Landscape Specification
 - NATURE PLAY PLANTING MATRIX
Refer Landscape Specification
 - SUBTROPICAL GARDEN MATRIX
Refer Landscape Specification
 - CEREMONIAL PALETTE MATRIX
Refer Landscape Specification
 - PARKLAND PALETTE MATRIX
Refer Landscape Specification
 - TREES TO BE REMOVED
Refer Arborist Report
 - TREES TO BE RETAINED
Refer Arborist Report
 - PROPOSED TREES

Key Plan



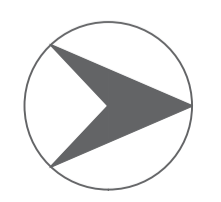


New South Wales Government
Independent Planning Commission

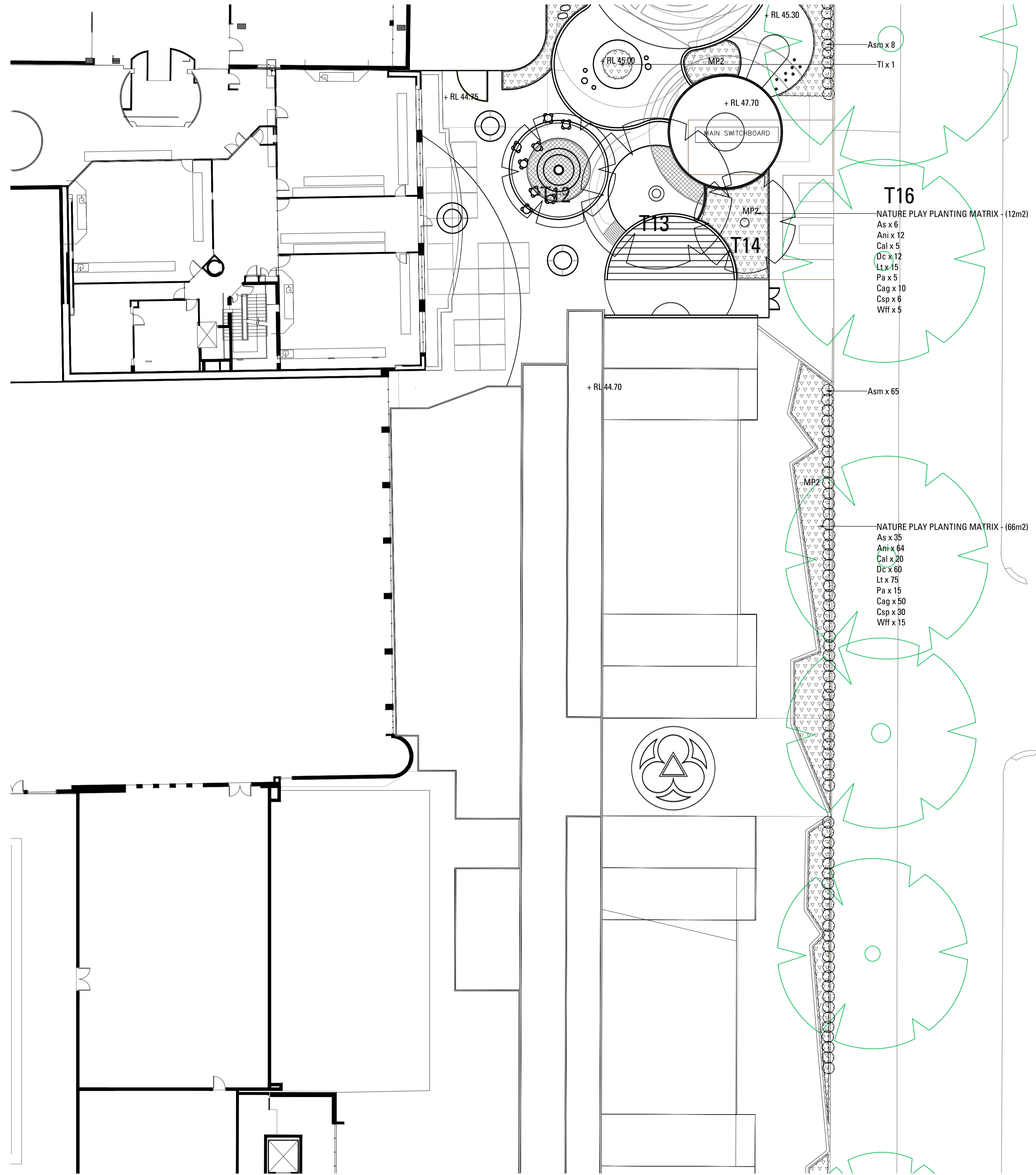
This plan satisfies the deferred commencement condition.

Application No: SSD-10371 Signed: AC

Granted on: 18 January 2022 Sheet no: 7 of 11



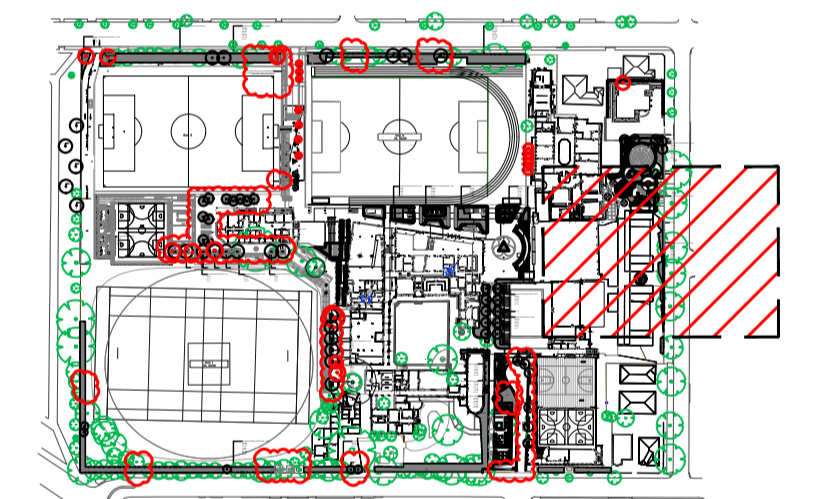
Copyright remains the property of Arcadia Landscape Architecture Pty Ltd. Use only figured dimensions. Any other required dimensions are to be referred to and supplied by the landscape architect. All discrepancies to be referred to the project manager and Arcadia Landscape Architecture Pty Ltd prior to construction. Ensure compliance with the Building Code of Australia and all relevant Australian Standards and Authorities



Legend

- SOFTWORKS**
- AUSTRALIAN GARDEN PLANTING MATRIX
Refer Landscape Specification
 - NATURE PLAY PLANTING MATRIX
Refer Landscape Specification
 - SUBTROPICAL GARDEN MATRIX
Refer Landscape Specification
 - CEREMONIAL PALETTE MATRIX
Refer Landscape Specification
 - PARKLAND PALETTE MATRIX
Refer Landscape Specification
 - TREES TO BE REMOVED
Refer Arborist Report
 - TREES TO BE RETAINED
Refer Arborist Report
 - PROPOSED TREES

Key Plan












New South Wales Government
Independent Planning Commission
 This plan satisfies the deferred commencement condition.
 Application No: SSD-10371 Signed: AC
 Granted on: 18 January 2022 Sheet no: 8 of 11

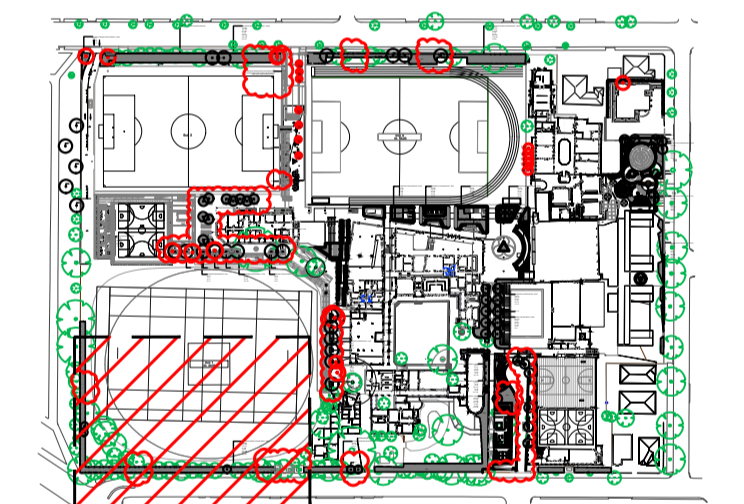




Legend

- SOFTWORKS**
-  AUSTRALIAN GARDEN PLANTING MATRIX
Refer Landscape Specification
 -  NATURE PLAY PLANTING MATRIX
Refer Landscape Specification
 -  SUBTROPICAL GARDEN MATRIX
Refer Landscape Specification
 -  CEREMONIAL PALETTE MATRIX
Refer Landscape Specification
 -  PARKLAND PALETTE MATRIX
Refer Landscape Specification
 -  TREES TO BE REMOVED
Refer Arborist Report
 -  TREES TO BE RETAINED
Refer Arborist Report
 -  PROPOSED TREES

Key Plan



New South Wales Government
Independent Planning Commission

This plan satisfies the deferred commencement condition.

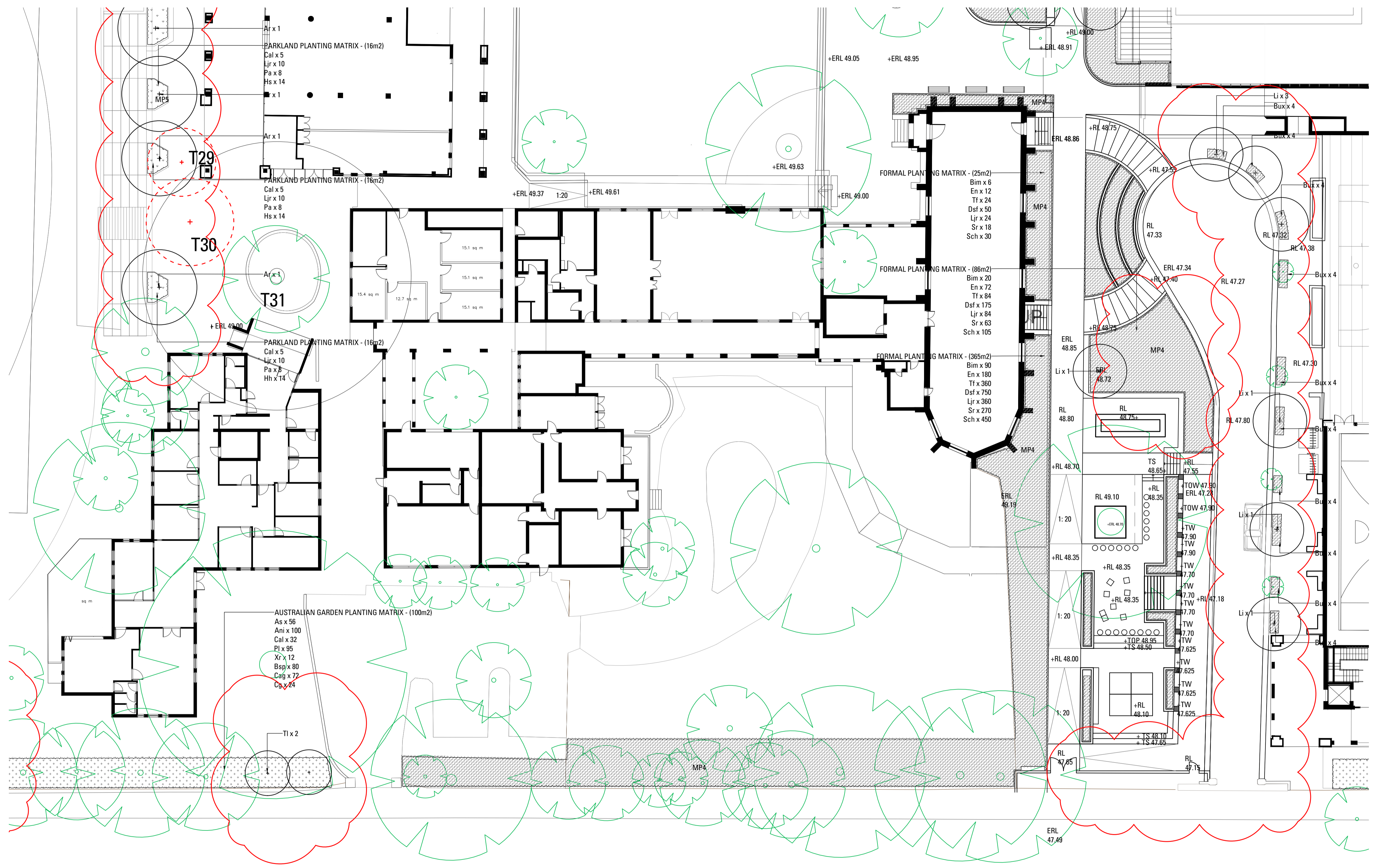
Application No: SSD-10371

Signed: AC

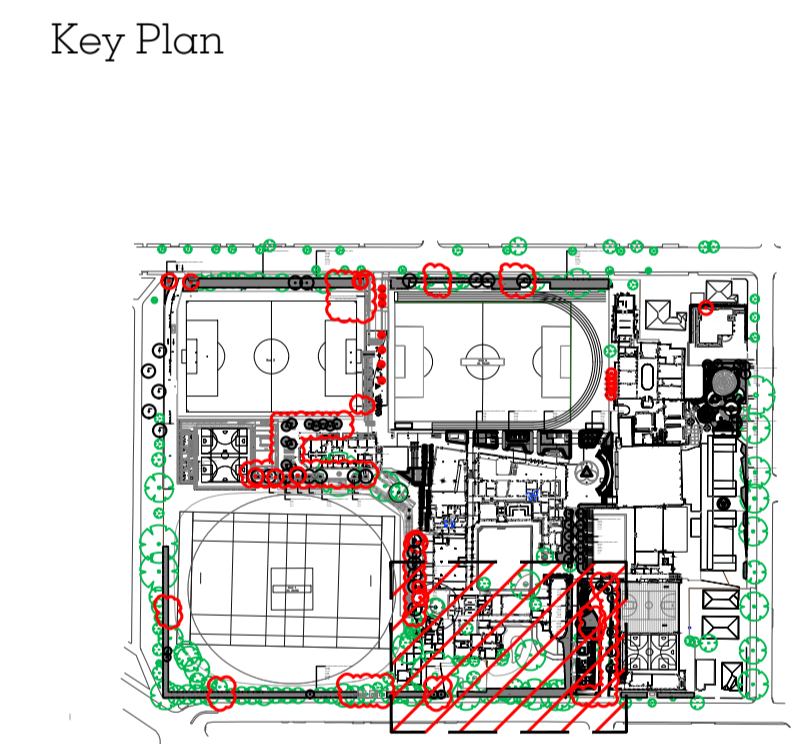
Granted on: 18 January 2022

Sheet no: 9 of 11





- Legend**
- SOFTWORKS**
- MP1 AUSTRALIAN GARDEN PLANTING MATRIX
Refer Landscape Specification
 - MP2 NATURE PLAY PLANTING MATRIX
Refer Landscape Specification
 - MP3 SUBTROPICAL GARDEN MATRIX
Refer Landscape Specification
 - MP4 CEREMONIAL PALETTE MATRIX
Refer Landscape Specification
 - MP5 PARKLAND PALETTE MATRIX
Refer Landscape Specification
 - Trees to be removed
Refer Arborist Report
 - Trees to be retained
Refer Arborist Report
 - Proposed trees




New South Wales Government
Independent Planning Commission

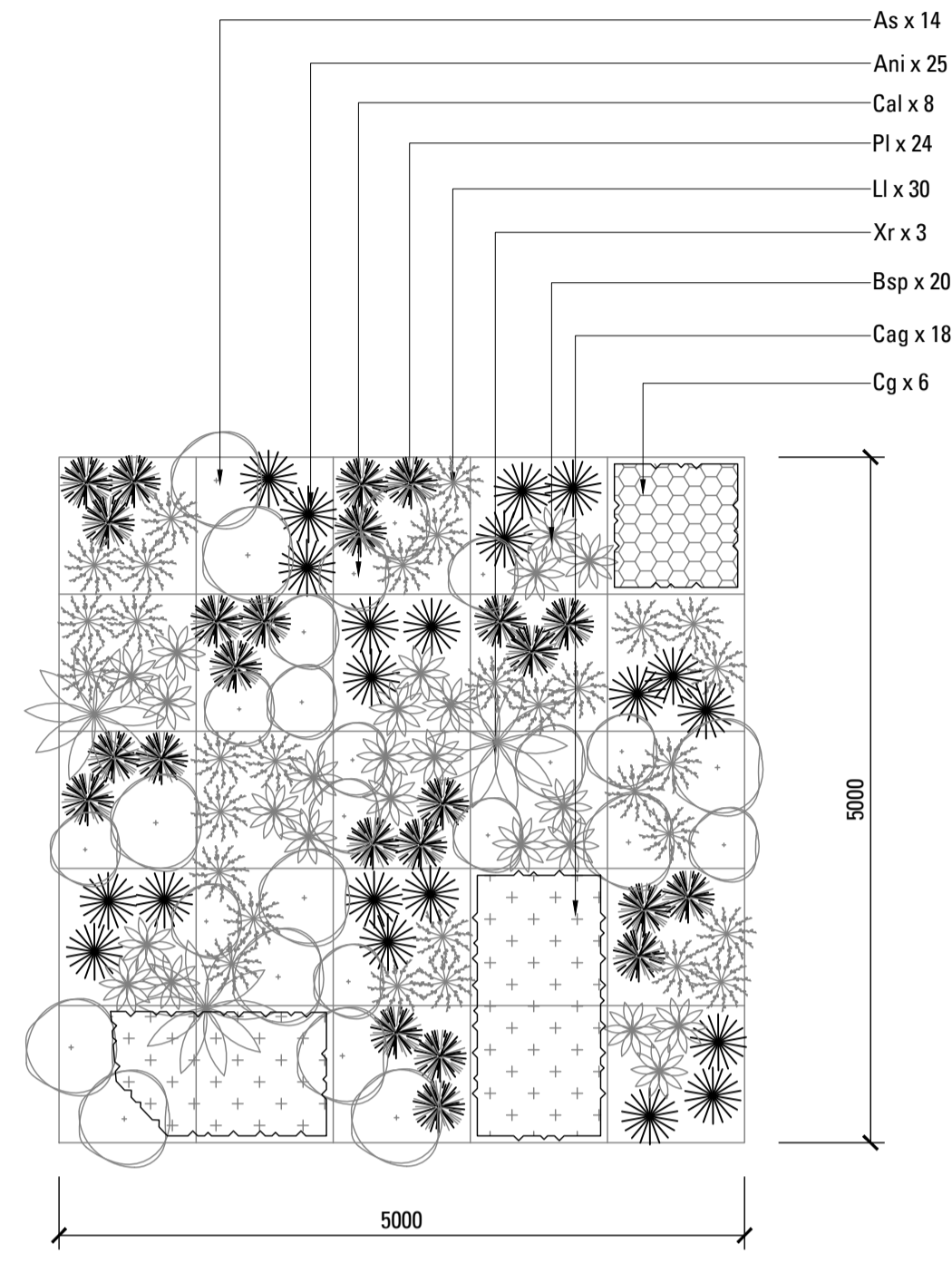
This plan satisfies the deferred commencement condition.

Application No: SSD-10371 Signed: AC

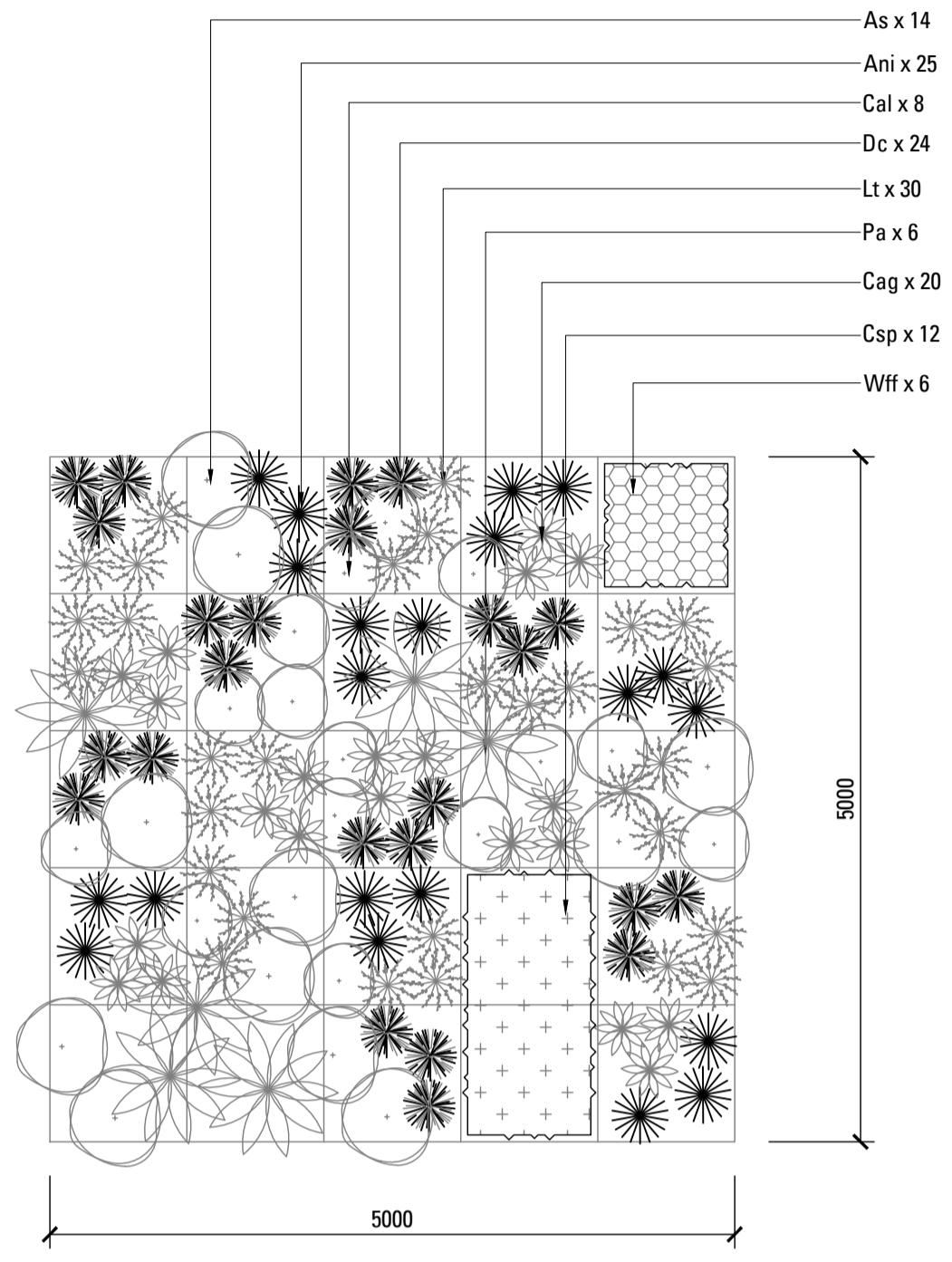
Granted on: 18 January 2022 Sheet no: 10 of 11



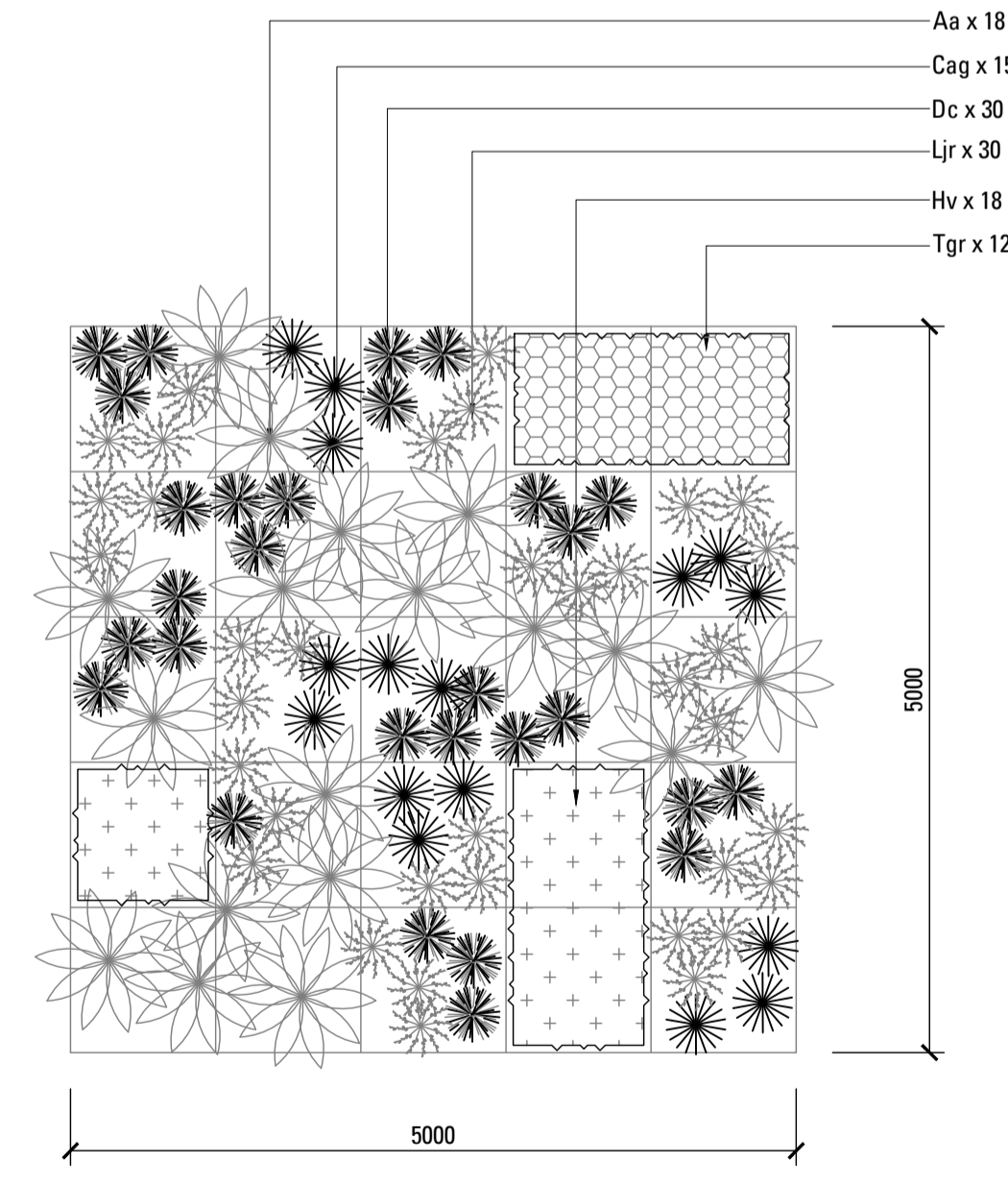
Copyright remains the property of Arcadia Landscape Architecture Pty Ltd. Use only figured dimensions. Any other required dimensions are to be referred to and supplied by the landscape architect. All discrepancies to be referred to the project manager and Arcadia Landscape Architecture Pty Ltd prior to construction. Ensure compliance with the Building Code of Australia and all relevant Australian Standards and Authorities



01 601 MP1 - AUSTRALIAN GARDEN PLANTING MATRIX - 5m x 5m
SCALE 1:50
NOTE: DETAIL IS INDICATIVE ONLY, PLANT ALL SPECIES RANDOMLY AT AM OVERALL RATE OF 6/m²



02 601 MP2 - NATIVE PLAY PLANTING MATRIX - 5m x 5m
SCALE 1:50
NOTE: DETAIL IS INDICATIVE ONLY, PLANT ALL SPECIES RANDOMLY AT AM OVERALL RATE OF 6/m²



03 601 MP3 - SUBTROPICAL PLANTING MATRIX - 5m x 5m
SCALE 1:50
NOTE: DETAIL IS INDICATIVE ONLY, PLANT ALL SPECIES RANDOMLY AT AM OVERALL RATE OF 6/m²

LANDSCAPE SPECIFICATION NOTES

SERVICES
BEFORE LANDSCAPE WORK IS COMMENCED THE LANDSCAPE CONTRACTOR IS TO ESTABLISH THE POSITION OF ALL SERVICE LINES AND ENSURE TREE PLANTING IS CARRIED OUT AT LEAST 3 METRES AWAY FROM THESE SERVICES. SERVICE LIDS, VENTS AND HYDRANTS SHALL BE LEFT EXPOSED AND NOT COVERED BY ANY LANDSCAPE FINISHES (TURFING, PAVING, GARDEN BEDS ETC.) FINISH ADJOINING SURFACES FLUSH WITH PIT LIDS.

ARBORIST MANAGEMENT OF TREE PROTECTION
A QUALIFIED AND APPROVED ARBORIST IS TO BE CONTRACTED TO UNDERTAKE OR MANAGE THE INSTALLATION OF PROTECTIVE FENCING, AND TO UNDERTAKE SUCH MEASURES AS HE DEEMS APPROPRIATE TO PRESERVE THE SUBJECT TREES TO BE RETAINED. THE ARBORIST IS TO BE RETAINED FOR THE ENTIRE CONTRACT PERIOD TO UNDERTAKE ONGOING MANAGEMENT AND REVIEW OF THE TREES.

DRAINAGE CELL AND FILTER FABRIC
FOR ON-SLAB AREAS INSTALL AN APPROVED 'DRAINAGE CELL' PRODUCT TO COMPREHENSIVELY COVER THE BOTTOM OF ALL PLANTERS, OVER DRAINAGE CELL TO ON-SLAB AREAS, A POLYFELT GEOTEXTILE LINING (AS SUPPLIED BY 'POLYFELT'S' OR APPROVED EQUIVALENT) IS TO BE INSTALLED TO COVER THE BOTTOM OF ALL PLANTERS, TURNED UP 300MM AND TAPED TO THE PLANTER SIDES TO ENSURE SOIL MIX DOES NOT ESCAPE INTO DRAINAGE OUTLETS/HOLES. INSTALL MIN. 50MM COARSE RIVER SAND OVER ALL GEOTEXTILE LINING PRIOR TO INSTALLATION OF SOIL MIX.

PLANTING MIXTURE
SHALL BE HOMOGENEOUS BLEND OF SOIL AND ADDITIVES IN THE FOLLOWING PROPORTIONS:
EXISTING SITE SOIL IF SUITABLE OR IMPORTED TOPSOIL 50%
COMPOST 30%
D/W SAND 20%
SOIL TESTING OF EXISTING SITE SOIL IS TO BE UNDERTAKEN TO ASSESS SUITABILITY OF USE AS PLANTING TOPSOIL AND COMPLIANCE WITH AUSTRALIAN STANDARDS.

MULCH APPLICATION
PLACE MULCH TO THE REQUIRED DEPTH. (REFER TO DRAWINGS) CLEAR OF PLANT STEMS, AND RAKE TO AN EVEN SURFACE FINISHING 25MM BELOW ADJOINING LEVELS. ENSURE MULCH IS WATERED IN AND TAMPED DOWN DURING INSTALLATION.

MULCH TYPE
PINE BARK FROM MATURE TREES, GRADED IN SIZE FROM 15MM TO 30MM, FREE FROM WOOD SLIVERS, DARK BROWN IN COLOUR AND TEXTURE.

COMPOST
SHALL BE WELL ROTTED VEGETATIVE MATERIAL OR ANIMAL MANURE, OR OTHER APPROVED MATERIAL, FREE FROM HARMFUL CHEMICALS, GRASS AND WEED GROWTH AND WITH NEUTRAL PH. PROVIDE A CERTIFICATE OF PROOF OF PH UPON REQUEST.

PLANT MATERIAL
ALL PLANTS SUPPLIED ARE TO CONFORM WITH THOSE SPECIES LISTED IN THE PLANT SCHEDULE ON THE DRAWINGS. GENERALLY PLANTS SHALL BE VIGOROUS, WELL ESTABLISHED, HARDENED OFF, OF GOOD FORM CONSISTENT WITH SPECIES OR VARIETY, NOT SOFT OR FORCED, FREE FROM DISEASE OR INSECT PESTS WITH LARGE HEALTHY ROOT SYSTEMS AND NO EVIDENCE OF HAVING BEEN RESTRICTED OR DAMAGED. TREES SHALL HAVE A LEADING SHOOT. IMMEDIATELY REJECT DRIED OUT, DAMAGED OR UNHEALTHY PLANT MATERIAL BEFORE PLANTING. ALL STOCK IS TO BE CONTAINER GROWN FOR A MINIMUM OF SIX (6) MONTHS PRIOR TO DELIVERY TO SITE.

FERTILISER MASS PLANTING AREAS:
FERTILISER SHALL BE 'NUTRICOTE' OR APPROVED EQUIVALENT IN GRANULE FORM INTENDED FOR SLOW RELEASE OF PLANT NUTRIENTS OVER A PERIOD OF APPROXIMATELY NINE MONTHS. THOROUGHLY MIX FERTILISER WITH PLANTING MIXTURE AT THE RECOMMENDED RATE, PRIOR TO INSTALLING PLANTS.

STAKING AND TYING
STAKES SHALL BE STRAIGHT HARDWOOD, FREE FROM KNOTS AND TWISTS, POINTED AT ONE END AND SIZED ACCORDING TO SIZE OF PLANTS TO BE STAKED.
A. 5-15 LITRE SIZE PLANT 1X(1200X25X25MM)
B. 35-75 LITRE SIZE PLANT 2X(1500X30X35MM)
C. 100+ GREATER THAN 200LITRE 3X(1800X50X50MM)
TIES SHALL BE 50MM WIDE HESSIAN WEBBING OR APPROVED EQUIVALENT NAILED OR STAPLED TO STAKE. DRIVE STAKES A MINIMUM ONE THIRD OF THEIR LENGTH, AVOIDING DAMAGE TO THE ROOT SYSTEM, ON THE WINDWARD SIDE OF THE PLANT.

IRRIGATION SYSTEM
SUPPLY AN AUTOMATIC WATERING SYSTEM USING 'TORO IRRIGATION SYSTEM' OR SIMILAR APPROVED, WITH MICRO-JET SPRINKLER HEADS AND LOW DENSITY, RUBBER MODIFIED POLYPROPYLENE RETICULATION, TO INCLUDE FILTERS, BENDS JUNCTIONS, ENDS AND OTHER ANCILLARY EQUIPMENT. THE LANDSCAPER SHALL NOMINATE HIS SOURCE OF SUPPLY FOR THE WATERING SYSTEM AND OBTAIN APPROVAL FROM THE SUPERINTENDENT BEFORE PLACING ORDERS FOR EQUIPMENT OR SUPPLY.

A SCHEMATIC PLAN OF THE PROPOSED IRRIGATION SYSTEM IS TO BE PREPARED BY THE CONTRACTOR, SHOWING SOLENOIDS, PIPE DIAMETERS, AND ALL NOZZLE AND TRICKLE ATTACHMENT TYPES (INCLUDING SPRAY/HEAD ANGLE), FOR REVIEW BY THE SUPERINTENDENT PRIOR TO INSTALLATION.

THE CONTRACTOR IS TO LIASE WITH THE HYDRAULIC ENGINEER AND COUNCIL AS NECESSARY, TO ENSURE THE THE IRRIGATION SYSTEM CONFORMS WITH ALL THE COUNCIL AND WATER BOARD CODES AND REQUIREMENTS.

PROVIDE AN AUTOMATIC CONTROLLER THAT PROVIDES FOR TWO WEEK SCHEDULING AND HOURLY MULTI-CYCLE OPERATION. THE CONTROLLER SHALL MANUAL OVERRIDE. PROGRAMMING SHALL BE UNDERTAKEN BY THE CONTRACTOR WHO SHALL ADVISE ON THE OPERATION OF THE SYSTEM.

Legend

PROVISION OF SECURE HOUSING FOR THE AUTOMATIC IRRIGATION CONTROLLER TO BE LOCATED IN ASSOCIATION WITH THE LANDSCAPE CONTRACTOR AND LOCATION CONFIRMED BY THE SUPERINTENDENT. WIRING TO CONNECT REMOTE SOLENOID LOCATIONS IS TO BE PROVIDED. THE CONTROLLER SHALL BE LOCATED IN A DRY PLACE, PROTECTED FROM THE WEATHER, AND ALL CABLE CONNECTIONS SHALL BE MADE WITH WATERPROOF CONNECTORS.

WATER SUPPLY POINTS TO BE SUPPLIED BY BUILDER.

IT SHALL BE THE CONTRACTOR'S RESPONSIBILITY TO ENSURE AND GUARANTEE SATISFACTORY OPERATION OF THE IRRIGATION SYSTEM.

AFTER THE SYSTEM HAS BEEN INSTALLED TO THE SATISFACTION OF THE SUPERINTENDENT, THE INSTALLATION SHALL BE TESTED UNDER KNOWN WORKING CONDITIONS. ACCEPTANCE OF THE INSTALLED PLANT AND EQUIPMENT SHALL BE SUBJECT TO THESE BEING SATISFACTORY.

TREATED PINE TIMBER EDGING
TIMBER EDGE: 100 X 25MM CCA TREATED RADIATA PINE TIMBER STAKES: 50 X 50 X 500MM CCA TREATED RADIATA PINE-SHARPENED AT ONE END. INSTALL IN LOCATIONS SHOWN ON THE DRAWINGS FLUSH TO FINISHED SURFACE LEVELS.

LANDSCAPE MAINTENANCE PROGRAM

MAINTENANCE SHALL MEAN THE CARE AND MAINTENANCE OF THE LANDSCAPE WORKS BY ACCEPTED HORTICULTURAL PRACTICE AS RECTIFYING ANY DEFECTS THAT BECOME APPARENT IN THE LANDSCAPE WORKS UNDER NORMAL USE. THIS SHALL INCLUDE, BUT SHALL NOT BE LIMITED TO, WATERING, MOWING, FERTILISING, RESEEDING, RETURFING, WEEDING, PEST AND DISEASE CONTROL, STAKING AND TYING, REPLANTING, CULTIVATION, PRUNING, AERATING, RENOVATING, TOP DRESSING, MAINTAINING THE SITE IN A NEAT AND TIDY CONDITION AS FOLLOWS:-

GENERAL
THE LANDSCAPE CONTRACTOR SHALL MAINTAIN THE LANDSCAPE WORKS FOR THE TERM OF THE MAINTENANCE (OR PLANT ESTABLISHMENT) PERIOD TO THE SATISFACTION OF THE COUNCIL. THE LANDSCAPE CONTRACTOR SHALL ATTEND TO THE SITE ON A WEEKLY BASIS. THE MAINTENANCE PERIOD SHALL COMMENCE AT PRACTICAL COMPLETION AND CONTINUE FOR A PERIOD OF TWENTY SIX (26) WEEKS.

WATERING
GRASS, TREES AND GARDEN AREAS SHALL BE WATERED REGULARLY SO AS TO ENSURE CONTINUOUS HEALTHY GROWTH.

RUBBISH REMOVAL
DURING THE TERM OF THE MAINTENANCE PERIOD THE LANDSCAPE CONTRACTOR SHALL REMOVE RUBBISH THAT MAY OCCUR AND REDUCOR THROUGHOUT THE MAINTENANCE PERIOD. THIS WORK SHALL BE CARRIED OUT REGULARLY SO THAT AT WEEKLY INTERVALS THE AREA MAY BE OBSERVED IN A COMPLETELY CLEAN AND TIDY CONDITION.

REPLACEMENTS
THE LANDSCAPE CONTRACTOR SHALL REPLACE ALL PLANTS THAT ARE MISSING, UNHEALTHY OR DEAD AT THE LANDSCAPE CONTRACTOR'S COST. REPLACEMENTS SHALL BE OF THE SAME SIZE, QUALITY AND SPECIES AS THE PLANT THAT HAS FAILED UNLESS OTHERWISE DIRECTED BY THE LANDSCAPE ARCHITECT. REPLACEMENTS SHALL BE MADE ON A CONTINUING BASIS NOT EXCEEDING TWO (2) WEEKS AFTER THE PLANT HAS DIED OR IS SEEN TO BE MISSING.

STAKES AND TIES
THE LANDSCAPE CONTRACTOR SHALL REPLACE OR ADJUST PLANT STAKES, AND TREE GUARDS AS NECESSARY OR AS DIRECTED BY THE LANDSCAPE ARCHITECT. REMOVE STAKES AND TIES AT THE END OF THE MAINTENANCE PERIOD IF SO DIRECTED.

PRUNING
TREES AND SHRUBS SHALL BE PRUNED AS DIRECTED BY THE LANDSCAPE ARCHITECT. PRUNING WILL BE DIRECTED AT THE MAINTENANCE OF THE DENSE FOLIAGE OR MISCELLANEOUS PRUNING AND BENEFICIAL TO THE CONDITION OF THE PLANTS. ANY DAMAGED GROWTH SHALL BE PRUNED. ALL PRUNED MATERIAL SHALL BE REMOVED FROM THE SITE.

MULCHED SURFACES
ALL MULCHED SURFACES SHALL BE MAINTAINED IN A CLEAN AND TIDY CONDITION AND BE REINSTATED IF NECESSARY TO ENSURE THAT A DEPTH OF 75MM IS MAINTAINED. ENSURE MULCH IS KEPT CLEAR OF PLANT STEMS AT ALL TIMES.

PEST AND DISEASED CONTROL
THE LANDSCAPE CONTRACTOR SHALL SPRAY AGAINST INSECT AND FUNGUS INFESTATION WITH ALL SPRAYING TO BE CARRIED OUT IN ACCORDANCE WITH THE MANUFACTURER'S DIRECTIONS. REPORT ALL INSTANCES OF PESTS AND DISEASES (IMMEDIATELY THAT THEY ARE DETECTED) TO THE LANDSCAPE ARCHITECT.

WEED ERADICATION
ERADICATE WEEDS BY ENVIRONMENTALLY ACCEPTABLE METHODS USING A NON-RESIDUAL GLYPHOSATE HERBICIDE (EG. 'ROUNDUP') IN ANY OF ITS REGISTERED FORMULAE, AT THE RECOMMENDED MAXIMUM RATE. REGULARLY REMOVE BY HAND, WEED GROWTH THAT MAY OCCUR OR RECUR THROUGHOUT GRASSED, PLANTED AND MULCHED AREAS. REMOVE WEED GROWTH FROM AN AREA 750MM DIAMETER AROUND THE BASE OF TREES IN GRASSED AREAS. CONTINUE ERADICATION THROUGHOUT THE COURSE OF THE WORKS AND DURING THE MAINTENANCE PERIOD.

SOIL SUBSIDENCE
ANY SOIL SUBSIDENCE OR EROSION WHICH MAY OCCUR AFTER THE SOIL FILLING AND PREPARATION OPERATIONS SHALL BE MADE GOOD BY THE LANDSCAPE CONTRACTOR AT NO COST TO THE CLIENT.

Key Plan