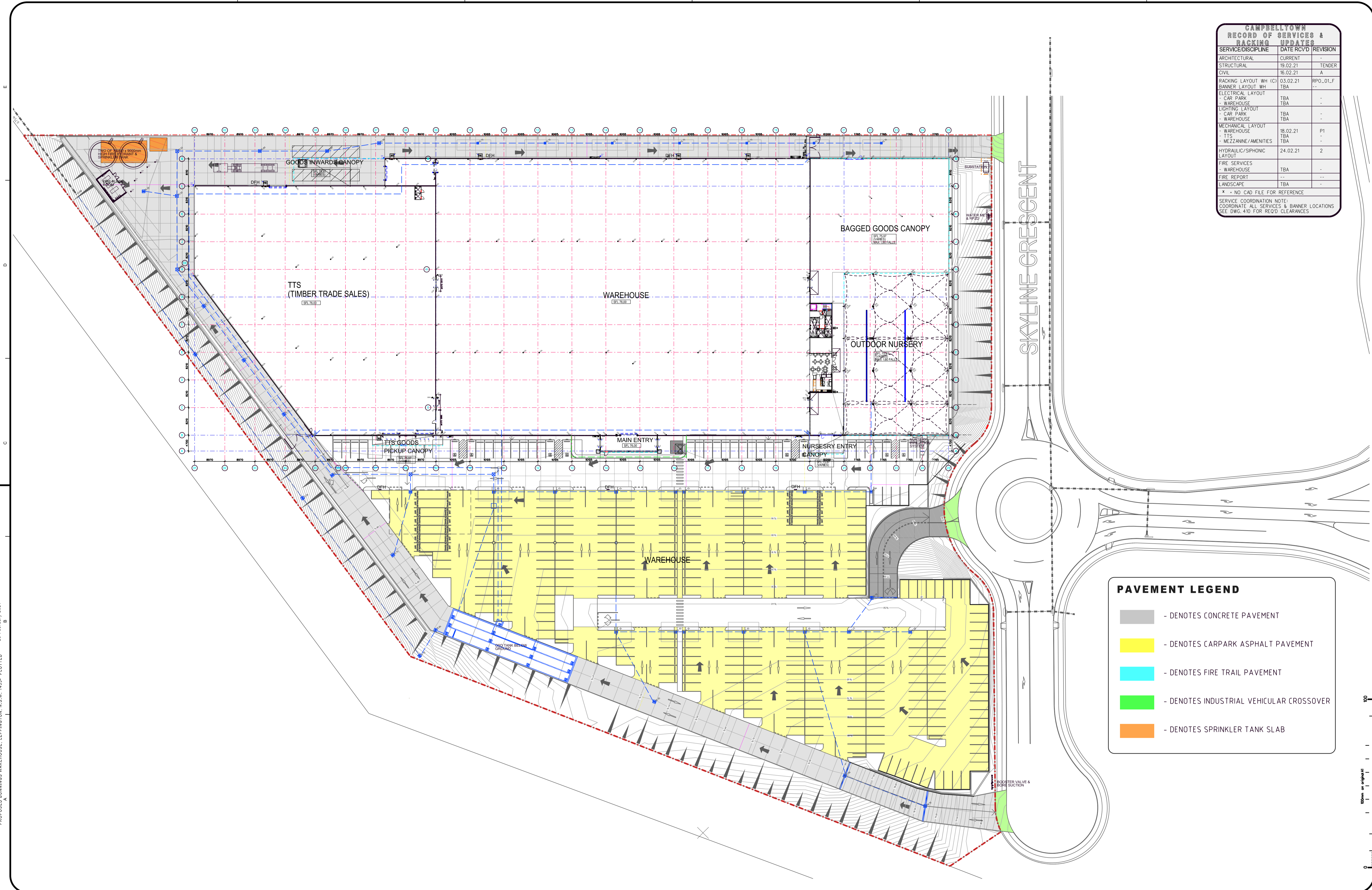


CAMPBELLTOWN RECORD OF SERVICES & RACKING UPDATES		
SERVICE/DISCIPLINE	DATE RCVD	REVISION
ARCHITECTURAL	CURRENT	-
STRUCTURAL	19.02.21	TENDER
CIVIL	16.02.21	A
RACKING LAYOUT WH (C)	03.02.21	RPO_01.F
BANNER LAYOUT WH	TBA	-
ELECTRICAL LAYOUT	- CAR PARK	-
- WAREHOUSE	TBA	-
LIGHTING LAYOUT	- CAR PARK	-
- WAREHOUSE	TBA	-
MECHANICAL LAYOUT	- WAREHOUSE	18.02.21
- TTS	TBA	-
- MEZZANINE/AMENITIES	TBA	-
HYDRAULIC/SIPHONIC LAYOUT	- WAREHOUSE	24.02.21
- TTS	TBA	-
FIRE SERVICES	- WAREHOUSE	TBA
- TTS	TBA	-
FIRE REPORT	-	-
LANDSCAPE	TBA	-

* - NO CAD FILE FOR REFERENCE

SERVICE COORDINATION NOTE:
COORDINATE ALL SERVICES & BANNER LOCATIONS
SEE DWG-410 FOR RECORD CLEARANCES



PAVEMENT LEGEND	
	- DENOTES CONCRETE PAVEMENT
	- DENOTES CARPARK ASPHALT PAVEMENT
	- DENOTES FIRE TRAIL PAVEMENT
	- DENOTES INDUSTRIAL VEHICULAR CROSSOVER
	- DENOTES SPRINKLER TANK SLAB

CAD REF: 25-February-2021
 PROPOSED BUNNINGS WAREHOUSE, LEPPINGTON, N.S.W. 1455 - PLOTTED

NO.	AMENDMENT	DATE	NO.	AMENDMENT	DATE
PT	PRELIMINARY ISSUE	18/01/21			
P2	PRELIMINARY ISSUE	24/01/21			
0	PRELIMINARY ISSUE	25/01/21			
1	PRELIMINARY ISSUE	18/02/21			
2	PRELIMINARY ISSUE	23/02/21			
3	CC ISSUE	25/02/21			

This drawing and the design shown herein is the property of John R Brogan & Associates Pty Ltd and shall not be copied nor reproduced in part or in whole in any form without the written permission of John R Brogan & Associates Pty Ltd. Sydney and shall be used only for the project for which it was provided.
Do not scale from this drawing.
Verify dimensions from site and refer any discrepancies to Architects for clarification.

DESIGN & CONSTRUCT HEAD CONTRACTOR

MAINBRACE CONSTRUCTIONS MAINBRACE CONSTRUCTIONS PTY LTD
 4/170 PACIFIC HWY GREENWICH NSW 2065
 PH: (02) 9 221 2833 FAX: (02) 9 251 4741
 EST. 1927

PRINCIPAL
BUNNINGS warehouse

JOHN R. BROGAN & ASSOCIATES PTY. LIMITED
 ARCHITECTS, PLANNERS & COMMERCIAL INTERIOR DESIGNERS

37 PITT ST. SYDNEY NSW 2000
 PH: (02) 9 221 2833 FAX: (02) 9 251 4741
 EMAIL: jrb@brogans.com.au

A.B.N. 93 003 284 759



PROP BUNNINGS WAREHOUSE LEPPINGTON
 LOT 3 DP TBC
 BRINGELLY RD BUSINESS HUB, SKYLINE DR
 HORNINGSEA PARK NSW 2171

SITE PLAN

SCALE
 1:500

DATE
 AUG 20

PROJ. NO.
 1455

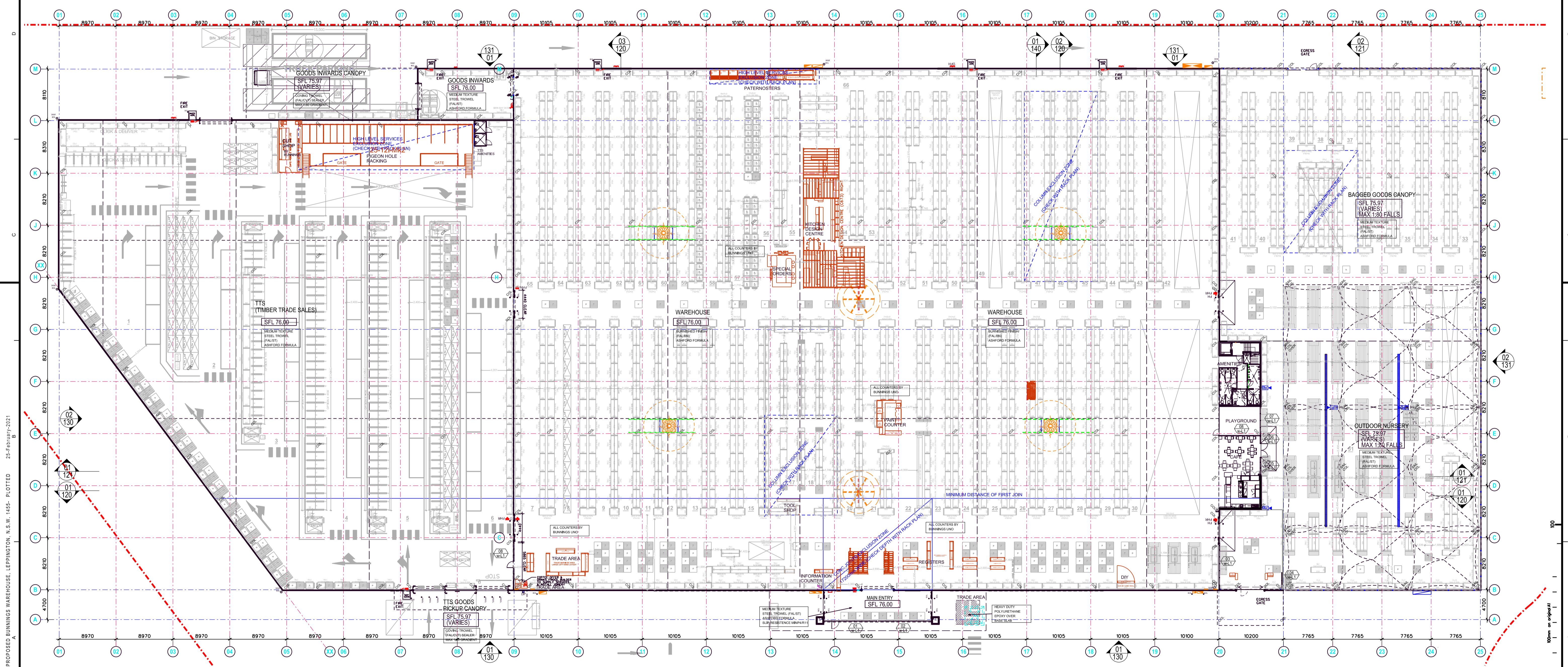
DRG. NO.
 030

AMD NO.
 3

CAMPBELLTOWN RECORD OF SERVICES & RACKING UPDATES		
SERVICE/DISCIPLINE	DATE RCVD	REVISION
ARCHITECTURAL	CURRENT	-
STRUCTURAL	19.02.21	TENDER
CIVIL	16.02.21	A
RACKING LAYOUT WH (C)	03.02.21	RPO_01_F
BANNER LAYOUT WH	TBA	-
ELECTRICAL LAYOUT - CAR PARK	TBA	-
ELECTRICAL LAYOUT - WAREHOUSE	TBA	-
LIGHTING LAYOUT - CAR PARK	TBA	-
LIGHTING LAYOUT - WAREHOUSE	TBA	-
MECHANICAL LAYOUT - WAREHOUSE	18.02.21	P1
LTS	TBA	-
MEZZANINE/MENTES	TBA	-
HYDRAULIC/SPRINKLING LAYOUT	24.02.21	2
FIRE SERVICES - WAREHOUSE	TBA	-
FIRE REPORT	-	-
LANDSCAPE	TBA	-

* - NO CAD FILE FOR REFERENCE

SERVICE COORDINATION NOTE:
COORDINATE ALL SERVICES & BANNER LOCATIONS SEE DWG 410 FOR RCD'S CLEARANCES



GENERAL REVISION:
- STRUCTURAL COLUMN OVERLAY AS PER DWG RCV'D 10.02.21

RACKING PLAN:
REVISION: RPO_01_F
DATE RECEIVED: 03.02.21

NO.	AMENDMENT	DATE	NO.	AMENDMENT	DATE
01	PRELIMINARY ISSUE	20.01.21			
02	PRELIMINARY ISSUE	28.01.21			
03	RACK COMPARISON ISSUE	04.02.21			
04	PRELIMINARY ISSUE	04.02.21			
05	PRELIMINARY ISSUE	09.02.21			
06	PRELIMINARY ISSUE	08.02.21			
07	PRELIMINARY ISSUE	10.02.21			
08	CR ISSUE	25.02.21			

This drawing and the design shown herein is the property of John R Brogan & Associates Pty Ltd and shall not be copied or reproduced in part or in whole in any form without the written permission of John R Brogan & Associates Pty Ltd. Sydney and shall be used only for the project for which it was provided. Do not scale from this drawing. Verify dimensions from site and refer any discrepancies to Architects for clarification.

DESIGN & CONSTRUCT HEAD CONTRACTOR

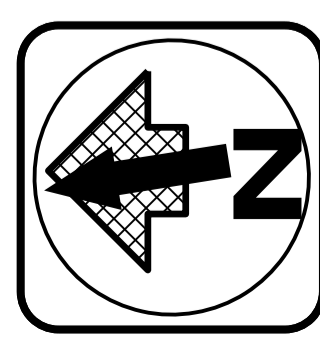
MAINBRACE CONSTRUCTIONS
MAINBRACE CONSTRUCTIONS PTY LTD
8/170 PACIFIC HWY GREENWICH NSW 2165
PH: 02 9333 1888

PRINCIPAL
BUNNINGS warehouse

JOHN R. BROGAN & ASSOCIATES PTY. LIMITED
ARCHITECTS, PLANNERS & COMMERCIAL INTERIOR DESIGNERS

EST. 1927

37 PITT ST. SYDNEY NSW 2000
PH: (02) 9 221 2833 FAX: (02) 9 251 4741
EMAIL: jrb@brogans.com.au



PROP BUNNINGS WAREHOUSE LEPPINGTON
LOT 3 DP TBC
BRINGELLY RD BUSINESS HUB, SKYLINE DR
HORNINGSEA PARK NSW 2171

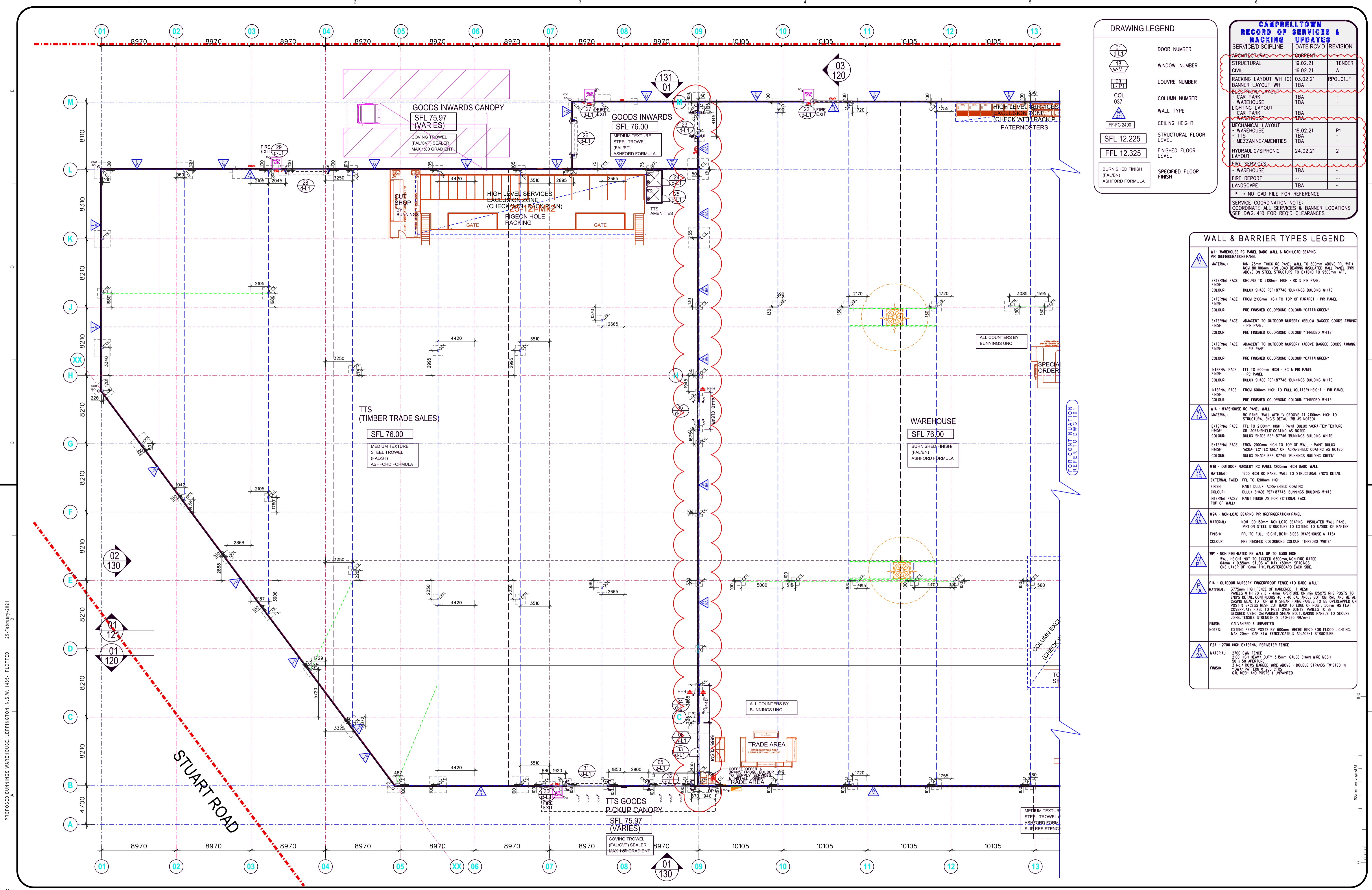
SCALE: 1:300
DATE: AUG 20

PLAN - WAREHOUSE - RACKING

PROJ. NO. 1455
DRG. NO. 050
AMD NO. 7

PROPOSED BUNNINGS WAREHOUSE, LEPPINGTON, N.S.W. 1455 - PLOTTED 25-FEBRUARY-2021





DRAWING LEGEND

01	DOOR NUMBER
18	WINDOW NUMBER
03	LOUVER NUMBER
037	COLUMN NUMBER
FF-FC 2400	WALL TYPE
SFL 12.225	CEILING HEIGHT
FFL 12.325	STRUCTURAL FLOOR LEVEL
BURNISHED FINISH (FALBN)	FINISHED FLOOR LEVEL
ASHFORD FORMULA	SPECIFIED FLOOR FINISH

CAMPBELLTOWN RECORD OF SERVICES & RACKING UPDATES

SERVICE/DISCIPLINE	DATE RCVD	REVISION
ARCHITECTURAL	CURRENT	TENDER
STRUCTURAL	19.02.21	A
CIVIL	16.02.21	A
RACKING LAYOUT WH (C)	03.02.21	RPO_01_F
BANNER LAYOUT WH	TBA	-
ELECTRICAL LAYOUT	TBA	-
CAR PARK WAREHOUSE	TBA	-
LIGHTING LAYOUT	TBA	-
CAR PARK WAREHOUSE	TBA	-
MECHANICAL LAYOUT	TBA	-
WAREHOUSE	18.02.21	P1
TTS	TBA	-
MEZZANINE/AMENITIES	TBA	-
HYDRAULIC/SIPHONIC LAYOUT	24.02.21	2
FIRE SERVICES	TBA	-
WAREHOUSE	TBA	-
FIRE REPORT	TBA	-
LANDSCAPE	TBA	-

* - NO CAD FILE FOR REFERENCE

SERVICE COORDINATION NOTE:
COORDINATE ALL SERVICES & BANNER LOCATIONS SEE DWG. 410 FOR REQ'D CLEARANCES

WALL & BARRIER TYPES LEGEND

W1 - WAREHOUSE RC PANEL DADED WALL & NON-LOAD BEARING PR (REFRIGERATION) PANEL	<p>MATERIAL: MIN 125mm THICK RC PANEL WALL TO 600mm ABOVE FFL WITH NON-LOAD BEARING INSULATED WALL PANEL (IPR) ABOVE ON STEEL STRUCTURE TO EXTEND TO 9500mm FFL</p> <p>EXTERNAL FACE: GROUND TO 2100mm HIGH - RC & PR PANEL</p> <p>FINISH: DULUX SHADE REF: 87746 'BUNNINGS BUILDING WHITE'</p> <p>INTERNAL FACE: FROM 2100mm HIGH TO TOP OF PARAPET - PR PANEL</p> <p>FINISH: PRE FINISHED COLORBOND COLOUR: 'CATTI GREEN'</p> <p>EXTERNAL FACE: ADJACENT TO OUTDOOR NURSERY (BELOW BAGGED GOODS AMING)</p> <p>FINISH: PRE FINISHED COLORBOND COLOUR: 'THREDBO WHITE'</p> <p>INTERNAL FACE: ADJACENT TO OUTDOOR NURSERY (ABOVE BAGGED GOODS AMING)</p> <p>FINISH: PRE FINISHED COLORBOND COLOUR: 'CATTI GREEN'</p> <p>INTERNAL FACE: FFL TO 600mm HIGH - RC & PR PANEL</p> <p>FINISH: DULUX SHADE REF: 87746 'BUNNINGS BUILDING WHITE'</p> <p>INTERNAL FACE: FROM 600mm HIGH TO FULL (OUTTER) HEIGHT - PR PANEL</p> <p>FINISH: PRE FINISHED COLORBOND COLOUR: 'THREDBO WHITE'</p>
W1A - WAREHOUSE RC PANEL WALL	<p>MATERIAL: RC PANEL WALL WITH 'Y' GROOVE AT 2100mm HIGH TO STRUCTURAL ENDS DETAIL (IB AS NOTED)</p> <p>EXTERNAL FACE: FFL TO 2100mm HIGH - PAINT DULUX 'ACRA-TEX' TEXTURE OR 'ACRA-SHIELD' COATING AS NOTED</p> <p>FINISH: DULUX SHADE REF: 87746 'BUNNINGS BUILDING WHITE'</p> <p>INTERNAL FACE: FROM 2100mm HIGH TO TOP OF WALL - PAINT DULUX 'ACRA-TEX' TEXTURE/ OR 'ACRA-SHIELD' COATING AS NOTED</p> <p>FINISH: DULUX SHADE REF: 87746 'BUNNINGS BUILDING GREEN'</p>
W1B - OUTDOOR NURSERY RC PANEL 1200mm HIGH DADED WALL	<p>MATERIAL: 1200 HIGH RC PANEL WALL TO STRUCTURAL ENDS DETAIL</p> <p>EXTERNAL FACE: FFL TO 1200mm HIGH</p> <p>FINISH: PAINT DULUX 'ACRA-SHIELD' COATING</p> <p>INTERNAL FACE/ PAINT FINISH AS FOR EXTERNAL FACE</p>
W1A - NON-LOAD BEARING PR (REFRIGERATION) PANEL	<p>MATERIAL: NON-LOAD BEARING PR (REFRIGERATION) PANEL (IPR) ON STEEL STRUCTURE TO EXTEND TO 1/2 SIDE OF RATER</p> <p>FINISH: FFL TO FULL HEIGHT, BOTH SIDES (WAREHOUSE & TTS)</p> <p>INTERNAL FACE/ PAINT FINISH AS FOR EXTERNAL FACE</p>
W1C - NON-FIRE-RATED PB WALL UP TO 6300 HIGH	<p>WALL HEIGHT NOT TO EXCEED 6300mm. NON-FIRE RATED 64mm x 0.55mm STUDS AT MAX 450mm SPACINGS. ONE LAYER OF 10mm THK PLASTERBOARD EACH SIDE.</p>
F1A - OUTDOOR NURSERY FIREPROOF FENCE 110 DADED WALL	<p>MATERIAL: 372mm HIGH FENCE OF HARDENED HI MESH PANELS WITH 70 x 8 x 4mm APERTURE ON 125x75 RHS POSTS TO ENDS DETAIL. CONTINUOUS 40 x 40 GAL ANGLE BOTTOM RAIL AND METAL CASING BEAD TO TOP WITH SHEAR FRINGE PANELS TO BE OVERLAPPED ON POST & EXCESS MESH CUT BACK TO EDGES OF POST. 50mm MS FLAT COVERPLATE FIXED TO POST OVER JOINTS. PANELS TO BE SECURED USING GALVANISED SHEAR BOLT. RAILING PANELS TO BE JOINTED USING GALVANISED SHEAR BOLT. RAILING PANELS TO BE GALVANISED & UNPAINTED</p> <p>FINISH: GALVANISED & UNPAINTED</p> <p>NOTES: EXTEND FENCE POSTS BY 600mm WHERE REQ'D FOR FLOOD LIGHTING. MAX. 20mm GAP B/TW FENCE/GATE & ADJACENT STRUCTURE.</p>
F2A - 2700 HIGH EXTERNAL PERIMETER FENCE	<p>MATERIAL: 2700 C/MW FENCE 2800 HIGH HEAVY DUTY 3.15mm GAUGE CHAIN WIRE MESH 50 x 50 APERTURE 3 No. 10mm BAGGED WIRE ABOVE - DOUBLE STRANDS TWISTED IN 'Z' PATTERN @ 200 C/Ps GAL MESH AND POSTS & UNPAINTED</p>

PROPOSED BUNNINGS WAREHOUSE, LEPPINGTON, N.S.W. 1455 - PLOTTED 25-February-2021

NO.	AMENDMENT	DATE	NO.	AMENDMENT	DATE
01	PRELIMINARY ISSUE	20.01.21			
02	CC ISSUE	25.02.21			

This drawing and the design shown herein is the property of John R Brogan & Associates Pty Ltd and shall not be copied or reproduced in part or in whole in any form without the written permission of John R Brogan & Associates Pty Ltd. Sydney and shall be used only for the project for which it was provided. Do not scale from this drawing. Verify dimensions from site and refer any discrepancies to Architects for clarification.

DESIGN & CONSTRUCT HEAD CONTRACTOR

MAINBRACE CONSTRUCTIONS
MAINBRACE CONSTRUCTIONS PTY LTD
4/170 PACIFIC HWY GREENWICH NSW 2165
PH: 02 9221 2833 FAX: (02) 9 251 4741

PRINCIPAL
BUNNINGS warehouse

JOHN R. BROGAN & ASSOCIATES PTY. LIMITED
ARCHITECTS, PLANNERS & COMMERCIAL INTERIOR DESIGNERS

EST. 1927

37 PITT ST. SYDNEY NSW 2000
PH: (02) 9 221 2833 FAX: (02) 9 251 4741
EMAIL: jrb@brogans.com.au



PROP BUNNINGS WAREHOUSE LEPPINGTON
LOT 3 DP TBC
BRINGELLY RD BUSINESS HUB, SKYLINE DR
HORNINGSEA PARK NSW 2171

PLAN - WAREHOUSE - NORTH

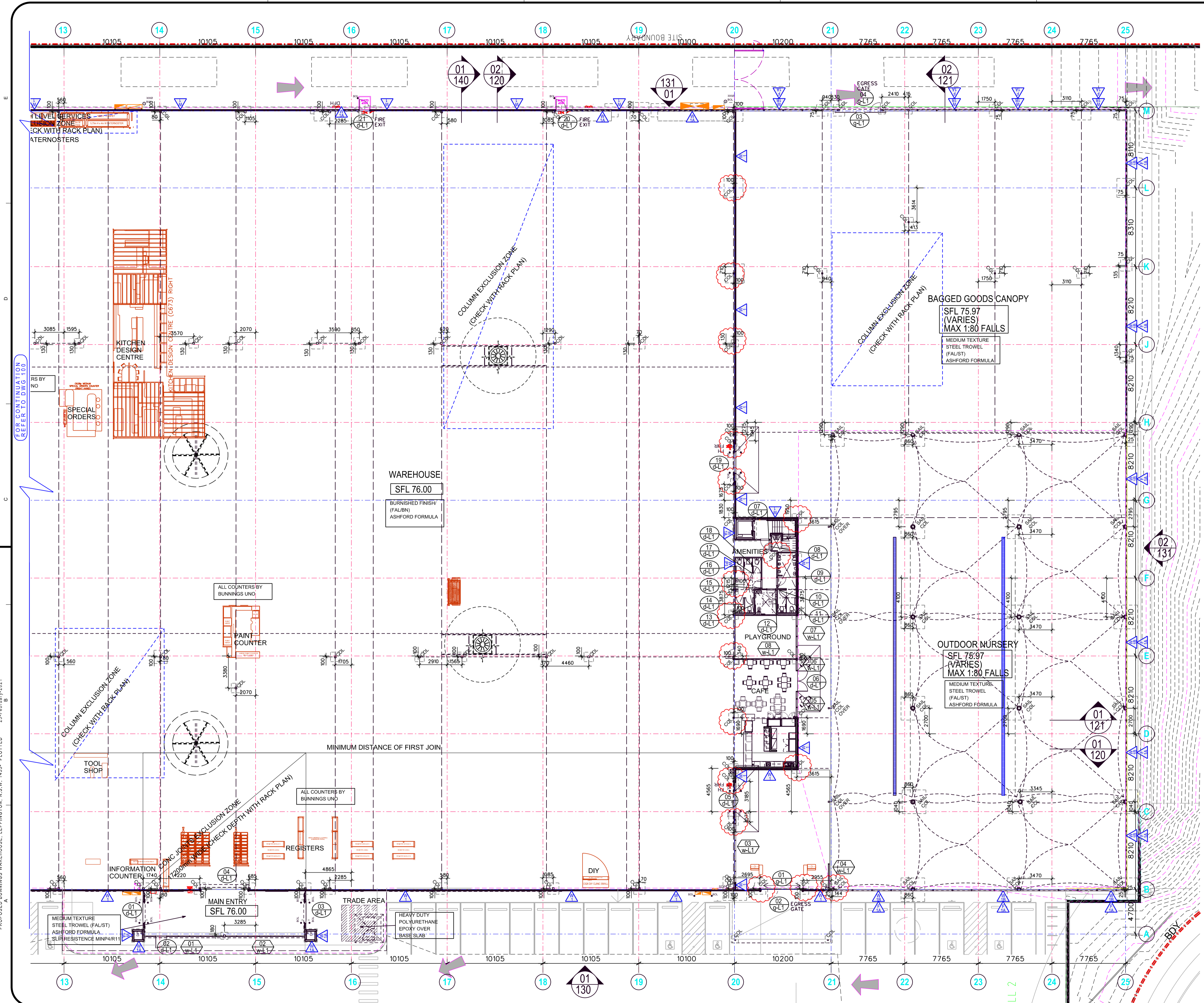
SCALE
1:200

DATE
AUG 20

PROJ. NO.
1455

DRG. NO.
100

AMD NO.
1



DRAWING LEGEND

01	DOOR NUMBER
18	WINDOW NUMBER
03	LOUVRE NUMBER
037	COLUMN NUMBER
FFFC 2400	WALL TYPE
SFL 12.225	CEILING HEIGHT
FFL 12.325	STRUCTURAL FLOOR LEVEL
BURNISHED FINISH (FAL/BN)	FINISHED FLOOR LEVEL
ASHFORD FORMULA	SPECIFIED FLOOR FINISH

CAMPBELLTOWN RECORD OF SERVICES & RACKING UPDATES

SERVICE/DISCIPLINE	DATE RCVD	REVISION
ARCHITECTURAL	CURRENT	
STRUCTURAL	19.02.21	TENDER
CIVIL	16.02.21	A
RACKING LAYOUT WH (C)	03.02.21	RPO_01_F
BANNER LAYOUT WH	TBA	
ELECTRICAL LAYOUT	TBA	
CAR PARK - WAREHOUSE	TBA	
LIGHTING LAYOUT	TBA	
CAR PARK - WAREHOUSE	TBA	
MECHANICAL LAYOUT	18.02.21	P1
WAREHOUSE	TBA	
MEZZANINE/AMENITIES	TBA	
HYDRAULIC/SIPHONIC LAYOUT	24.02.21	2
FFS SERVICES	TBA	
WAREHOUSE	TBA	
FIRE REPORT	---	
LANDSCAPE	TBA	

* - NO CAD FILE FOR REFERENCE

SERVICE COORDINATION NOTE:
COORDINATE ALL SERVICES & BANNER LOCATIONS SEE DWG. 410 FOR REQ'D CLEARANCES

WALL & BARRIER TYPES LEGEND

W1 - WAREHOUSE RC PANEL DADO WALL & NON-LOAD BEARING PR (REFRIGERATION) PANEL	<p>MATERIAL: MIN 125mm THICK RC PANEL WALL TO 600mm ABOVE FFL WITH NOW 80-100mm NON-LOAD BEARING INSULATED WALL PANEL (PR) ABOVE ON STEEL STRUCTURE TO EXTEND TO 600mm AFFL</p> <p>FINISH: DULUX SHADE REF: 87746 'BUNNINGS BUILDING WHITE'</p> <p>EXTERNAL FACE: FROM 200mm HIGH TO TOP OF PARAPET - PR PANEL</p> <p>INTERNAL FACE: PRE FINISHED COLORBOND COLOUR: 'CATTAGREEN'</p>
W2 - WAREHOUSE RC PANEL WALL	<p>MATERIAL: FFL TO 600mm HIGH - RC & PR PANEL</p> <p>FINISH: DULUX SHADE REF: 87746 'BUNNINGS BUILDING WHITE'</p> <p>EXTERNAL FACE: FROM 600mm HIGH TO FULL (GUTTER) HEIGHT - PR PANEL</p> <p>INTERNAL FACE: PRE FINISHED COLORBOND COLOUR: 'THREDBO WHITE'</p>
W3 - OUTDOOR NURSERY RC PANEL 1200mm HIGH DADO WALL	<p>MATERIAL: 1200 HIGH RC PANEL WALL TO STRUCTURAL ENG'S DETAIL</p> <p>EXTERNAL FACE: FFL TO 1200mm HIGH</p> <p>INTERNAL FACE: PAINT DULUX 'ACRA-SHIELD' COATING</p> <p>INTERNAL FACE: PAINT FINISH AS FOR EXTERNAL FACE</p>
W4 - NON-LOAD BEARING PR (REFRIGERATION) PANEL	<p>MATERIAL: NOW 100-150mm NON-LOAD BEARING INSULATED WALL PANEL (PR) ON STEEL STRUCTURE TO EXTEND TO UPSIDE OF PR FR</p> <p>FINISH: FFL TO FULL HEIGHT, BOTH SIDES (WAREHOUSE & TTS)</p> <p>INTERNAL FACE: PRE FINISHED COLORBOND COLOUR: 'THREDBO WHITE'</p>
W5 - NON-FIRE-RATED PB WALL UP TO 6300 HIGH	<p>WALL HEIGHT NOT TO EXCEED 6300mm, NON-FIRE RATED 64mm x 0.50mm SLATS AT MAX 450mm SPACINGS, ONE LAYER OF 10mm THK PLASTERBOARD EACH SIDE.</p>
F1A - OUTDOOR NURSERY FINGERPROOF FENCE (TO DADO WALL)	<p>MATERIAL: 3775mm HIGH FENCE OF HARDENED HIT MESH PANELS WITH 10 x 8mm APERTURE ON MIN 125x75 RIG POSTS TO ENDS DETAIL, CONTINUOUS 40 x 40 GAL ANGLE BOTTOM RAIL AND METAL CASING BEAD TO TOP WITH SHEAR FINISH PANELS TO BE OVERLAPPED ON POST & EXCESS MESH CUT BACK TO EDGE OF POST. 50mm WS FLAT COVERPLATE FRENCH TO POST OVER JOINTS. PANELS TO BE SECURED USING GALVANISED SHEAR BOLT RAKING PANELS TO SECURE JOINTS. TENSILE STRENGTH IS 540-695 N/mm²</p> <p>FINISH: GALVANISED & UNPAINTED</p> <p>NOTES: EXTEND FENCE POSTS BY 600mm WHERE REQ'D FOR FLOOD LIGHTING. MAX. 20mm GAP BTW FENCE/GATE & ADJACENT STRUCTURE.</p>
F2A - 2700 HIGH EXTERNAL PERIMETER FENCE	<p>MATERIAL: 2700 CWV FENCE 200 HIGH HEAVY DUTY 3.15mm GAUGE CHAIN WIRE MESH 50 x 50 APERTURE 3 NO. x ROWS BARBED WIRE ABOVE - DOUBLE STRANDS TWISTED IN GAL MESH AND POSTS & UNPAINTED</p>

PROPOSED BUNNINGS WAREHOUSE, LEPPINGTON, N.S.W. 1455 - PLOTTED 25-February-2021

NO.	AMENDMENT	DATE	NO.	AMENDMENT	DATE
01	PRELIMINARY ISSUE	20.01.21			
02	CR ISSUE	23.02.21			

This drawing and the design shown herein is the property of John R Brogan & Associates Pty Ltd and shall not be copied or reproduced in part or in whole in any form without the written permission of John R Brogan & Associates Pty Ltd. Sydney and shall be used only for the project for which it was provided. Do not scale from this drawing. Verify dimensions from site and refer any discrepancies to Architects for clarification.

DESIGN & CONSTRUCT HEAD CONTRACTOR

MAINBRACE CONSTRUCTIONS PTY LTD
4/170 PACIFIC HWY GREENWICH NSW 2065
PRINCIPAL **BUNNINGS** warehouse

JOHN R. BROGAN & ASSOCIATES PTY. LIMITED
ARCHITECTS, PLANNERS & COMMERCIAL INTERIOR DESIGNERS

37 PITT ST. SYDNEY NSW 2000
PH: (02) 9 221 2833 FAX: (02) 9 251 4741
EMAIL: jrb@brogans.com.au

EST. 1927
A.B.N. 93 003 284 759

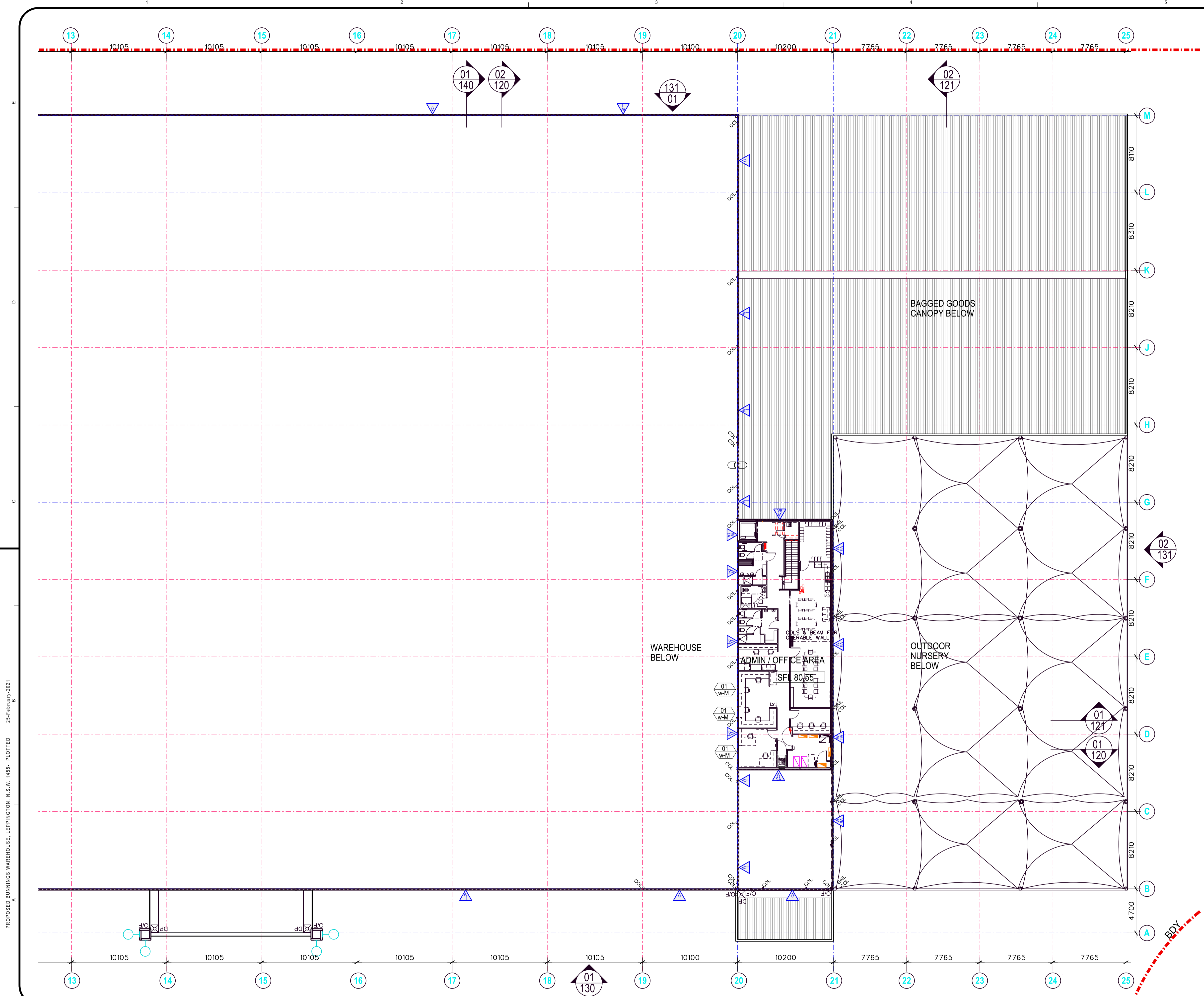


PROP BUNNINGS WAREHOUSE LEPPINGTON
LOT 3 DP TBC
BRINGELLY RD BUSINESS HUB, SKYLINE DR
HORNINGSEA PARK NSW 2171

PLAN - WAREHOUSE - SOUTH

SCALE 1:200
DATE AUG 20

PROJ. NO. 1455
DRG. NO. 101
AMD NO. 1



DRAWING LEGEND

	DOOR NUMBER
	WINDOW NUMBER
	LOUVRE NUMBER
	COLUMN NUMBER
	WALL TYPE
	CEILING HEIGHT
	STRUCTURAL FLOOR LEVEL
	FINISHED FLOOR LEVEL
	SPECIFIED FLOOR FINISH

CAMPBELLTOWN RECORD OF SERVICES & RACKING UPDATES

SERVICE/DISCIPLINE	DATE RCVD	REVISION
ARCHITECTURAL	CURRENT	
STRUCTURAL	19.02.21	TENDER
CIVIL	16.02.21	A
RACKING LAYOUT WH (C)	03.02.21	RPO_01_F
BANNER LAYOUT WH	TBA	-
ELECTRICAL LAYOUT	TBA	-
CAR PARK - WAREHOUSE	TBA	-
LIGHTING LAYOUT - CAR PARK	TBA	-
LIGHTING LAYOUT - WAREHOUSE	TBA	-
MECHANICAL LAYOUT - WAREHOUSE	18.02.21	P1
TIS	TBA	-
MEZZANINE/AMENITIES	TBA	-
HYDRAULIC/SIPHONIC LAYOUT	24.02.21	2
FIBS SERVICES	TBA	-
WAREHOUSE	TBA	-
FIRE REPORT	--	--
LANDSCAPE	TBA	-

* - NO CAD FILE FOR REFERENCE

SERVICE COORDINATION NOTE:
COORDINATE ALL SERVICES & BANNER LOCATIONS
SEE DWG. 410 FOR REQ'D CLEARANCES

WALL & BARRIER TYPES LEGEND

	<p>W1 - WAREHOUSE RC PANEL DADO WALL & NON-LOAD BEARING PR (REFRIGERATION) PANEL</p> <p>MATERIAL: MIN 125mm THICK RC PANEL WALL TO 600mm ABOVE FFL WITH NOM 80-100mm NON-LOAD BEARING INSULATED WALL PANEL (PR) ABOVE ON STEEL STRUCTURE TO EXTEND TO 950mm AFFL</p> <p>FINISH: GROUND TO 200mm HIGH - RC & PR PANEL</p> <p>COLOUR: DULUX SHADE REF: 87746 'BUNNINGS BUILDING WHITE'</p> <p>EXTERNAL FACE FROM 200mm HIGH TO TOP OF PARAPET - PR PANEL</p> <p>COLOUR: PRE FINISHED COLORBOND COLOUR: 'CATTI GREEN'</p> <p>EXTERNAL FACE ADJACENT TO OUTDOOR NURSERY (BELOW BAGGED GOODS ANNING - PR PANEL</p> <p>COLOUR: PRE FINISHED COLORBOND COLOUR: 'THREDBO WHITE'</p> <p>EXTERNAL FACE ADJACENT TO OUTDOOR NURSERY (ABOVE BAGGED GOODS ANNING - PR PANEL</p> <p>COLOUR: PRE FINISHED COLORBOND COLOUR: 'CATTI GREEN'</p> <p>INTERNAL FACE FFL TO 600mm HIGH - RC & PR PANEL</p> <p>COLOUR: DULUX SHADE REF: 87746 'BUNNINGS BUILDING WHITE'</p> <p>INTERNAL FACE FROM 600mm HIGH TO FULL (GUTTER) HEIGHT - PR PANEL</p> <p>COLOUR: PRE FINISHED COLORBOND COLOUR: 'THREDBO WHITE'</p>
	<p>W1A - WAREHOUSE RC PANEL WALL</p> <p>MATERIAL: RC PANEL WALL WITH 1/2 GROOVE AT 200mm HIGH TO STRUCTURAL ENDS DETAIL (RB AS NOTED)</p> <p>FINISH: FFL TO 200mm HIGH - PAINT DULUX 'ACRA-TEX' TEXTURE OR 'ACRA-SHIELD' COATING AS NOTED</p> <p>COLOUR: DULUX SHADE REF: 87746 'BUNNINGS BUILDING WHITE'</p> <p>EXTERNAL FACE FROM 200mm HIGH TO TOP OF WALL - PAINT DULUX 'ACRA-TEX' TEXTURE/ OR 'ACRA-SHIELD' COATING AS NOTED</p> <p>COLOUR: DULUX SHADE REF: 87745 'BUNNINGS BUILDING GREEN'</p>
	<p>W1B - OUTDOOR NURSERY RC PANEL 1200mm HIGH DADO WALL</p> <p>MATERIAL: 1200 HIGH RC PANEL WALL TO STRUCTURAL ENDS DETAIL</p> <p>EXTERNAL FACE: FFL TO 1200mm HIGH</p> <p>FINISH: PAINT DULUX 'ACRA-SHIELD' COATING</p> <p>COLOUR: DULUX SHADE REF: 87746 'BUNNINGS BUILDING WHITE'</p> <p>INTERNAL FACE/ PAINT FINISH AS FOR EXTERNAL FACE TOP OF WALL</p>
	<p>W1A - NON-LOAD BEARING PR (REFRIGERATION) PANEL</p> <p>MATERIAL: NOM 100-150mm NON-LOAD BEARING INSULATED WALL PANEL (PR) ON STEEL STRUCTURE TO EXTEND TO WISE OF RAFTER</p> <p>FINISH: FFL TO FULL HEIGHT, BOTH SIDES (WAREHOUSE & TIS)</p> <p>COLOUR: PRE FINISHED COLORBOND COLOUR: 'THREDBO WHITE'</p>
	<p>W1 - NON-FIRE-RATED PB WALL UP TO 6300 HIGH</p> <p>WALL HEIGHT NOT TO EXCEED 6300mm, NON-FIRE RATED 14mm x 0.5mm STUDS AT MAX 450mm SPACINGS</p> <p>ONE LAYER OF 10mm THK PLASTERBOARD EACH SIDE.</p>
	<p>F1A - OUTDOOR NURSERY FINGERPROOF FENCE (TO DADO WALL)</p> <p>MATERIAL: 3775mm HIGH FENCE OF HARDENED HI MESH PANELS WITH 25 x 25mm APERTURE ON 125x75 RHS POSTS TO ENDS DETAIL CONTINUOUS 40 x 40 GAL ANGLE BOTTOM RAIL AND METAL CHAIN BEAD TO TOP WITH SHEAR JOINTS PANELS TO BE OVERLAPPED ON POST & EXCESS MESH CUT BACK TO EDGE OF POST. 50mm MS FLAT CONCRETE FIED TO POST OVER JOINTS PANELS TO BE SECURED USING GALVANISED SHEAR BOLT RAKING PANELS TO SECURE JOINTS. TENSILE STRENGTH IS 540-695 N/mm²</p> <p>FINISH: GALVANISED & UNPAINTED</p> <p>NOTES: EXTEND FENCE POSTS BY 600mm WHERE REQ'D FOR FLOOD LIGHTING. MAX. 20mm GAP BTW FENCE/GATE & ADJACENT STRUCTURE.</p>
	<p>F2A - 2700 HIGH EXTERNAL PERIMETER FENCE</p> <p>MATERIAL: 2700 HIGH EXTERNAL PERIMETER FENCE</p> <p>2700 HIGH HEAVY DUTY 3.15mm GAUGE CHAIN WIRE MESH 50 x 50 APERTURE</p> <p>3 No. * ROWS BARBED WIRE ABOVE - DOUBLE STRANDS TWISTED IN 'Z' PATTERN @ 200 CTRS</p> <p>FINISH: GAL MESH AND POSTS & UNPAINTED</p>

PROPOSED BUNNINGS WAREHOUSE, LEPPINGTON, N.S.W. 1455 - PLOTTED 25-February-2021



NO.	AMENDMENT	DATE	NO.	AMENDMENT	DATE
01	PRELIMINARY ISSUE	25.01.21			
02	CC ISSUE	25.02.21			

This drawing and the design shown herein is the property of John R Brogan & Associates Pty Ltd and shall not be copied nor reproduced in part or in whole in any form without the written permission of John R Brogan & Associates Pty Ltd. Sydney and shall be used only for the project for which it was provided. Do not scale from this drawing. Verify dimensions from site and refer any discrepancies to Architects for clarification.

DESIGN & CONSTRUCT HEAD CONTRACTOR

MAINBRACE CONSTRUCTIONS PTY LTD
4/170 PACIFIC HWY GREENWICH NSW 2065
PRINCIPAL **BUNNINGS warehouse**

JOHN R. BROGAN & ASSOCIATES PTY. LIMITED
ARCHITECTS, PLANNERS & COMMERCIAL INTERIOR DESIGNERS

37 PITT ST. SYDNEY NSW 2000
PH: (02) 9 221 2833 FAX: (02) 9 251 4741
EMAIL: jrb@brogans.com.au

A.B.N. 93 003 284 759



PROP BUNNINGS WAREHOUSE LEPPINGTON
LOT 3 DP TBC
BRINGELLY RD BUSINESS HUB, SKYLINE DR
HORNINGSEA PARK NSW 2171

SCALE 1:200
DATE AUG 20

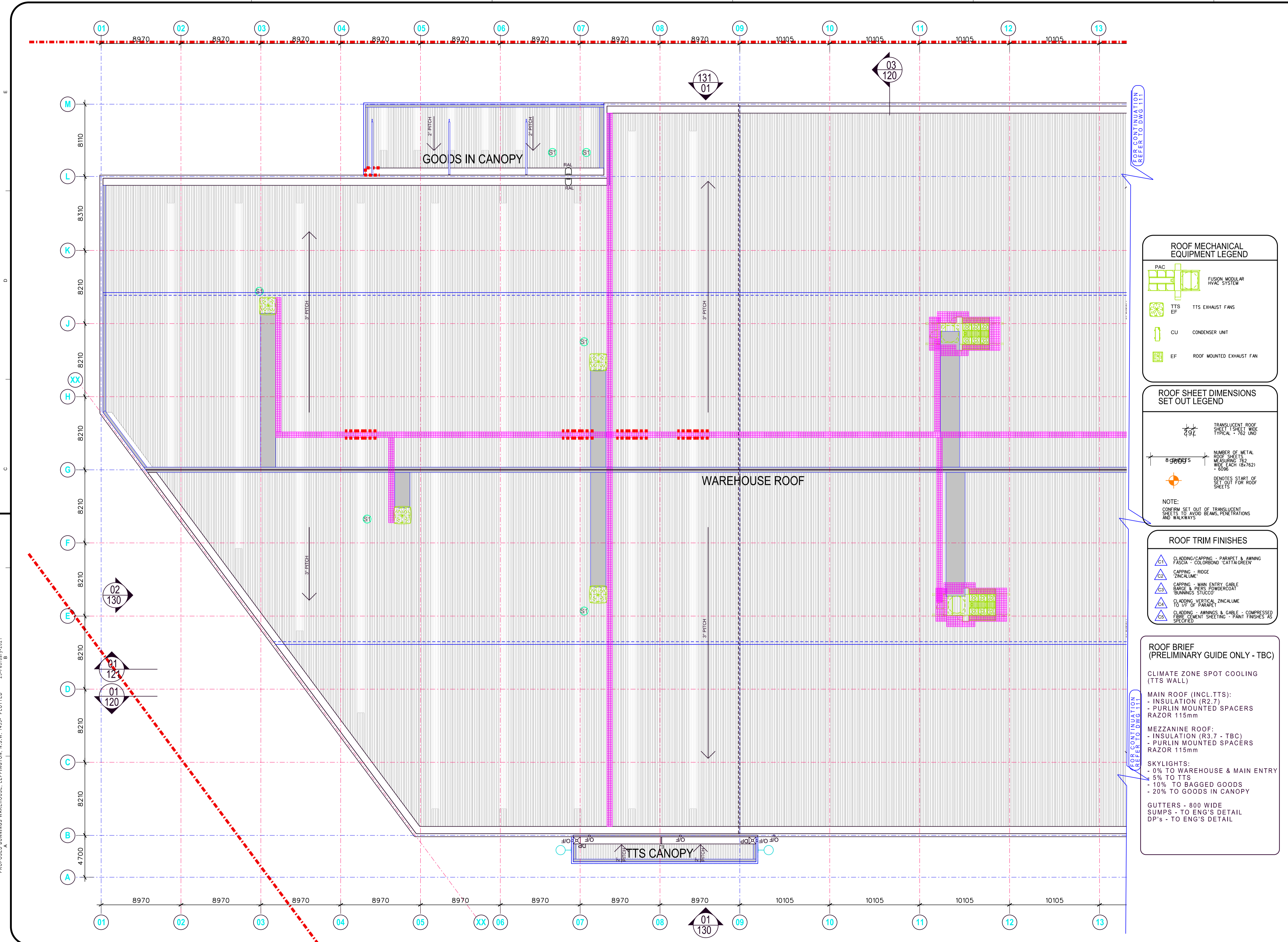
PLAN - MEZZANINE - SOUTH

PROJ. NO. 1455
DRG. NO. 102
AMD NO. 1

CAMPBELLTOWN RECORD OF SERVICES & RACKING UPDATES		
SERVICE/DISCIPLINE	DATE RCVD	REVISION
ARCHITECTURAL	CURRENT	-
STRUCTURAL	19.02.21	TENDER
CIVIL	16.02.21	A
RACKING LAYOUT WH (C)	03.02.21	RPO_01.F
BANNER LAYOUT WH	TBA	-
ELECTRICAL LAYOUT	TBA	-
- CAR PARK	TBA	-
- WAREHOUSE	TBA	-
LIGHTING LAYOUT	TBA	-
- CAR PARK	TBA	-
- WAREHOUSE	TBA	-
MECHANICAL LAYOUT	18.02.21	P1
- WAREHOUSE	TBA	-
- TTS	TBA	-
- MEZZANINE/AMENITIES	TBA	-
HYDRAULIC/SIPHONIC LAYOUT	24.02.21	2
FIRE SERVICES	TBA	-
- WAREHOUSE	TBA	-
FIRE REPORT	-	-
LANDSCAPE	TBA	-

* - NO CAD FILE FOR REFERENCE

SERVICE COORDINATION NOTE:
COORDINATE ALL SERVICES & BANNER LOCATIONS
SEE DWG. 410 FOR REQD CLEARANCES



ROOF MECHANICAL EQUIPMENT LEGEND

- PAC: FUSION MODULAR HVAC SYSTEM
- TTS EF: TTS EXHAUST FANS
- CU: CONDENSER UNIT
- EF: ROOF MOUNTED EXHAUST FAN

ROOF SHEET DIMENSIONS SET OUT LEGEND

- TRANSLUCENT ROOF SHEET 1 SHEET WIDE TYPICAL - 762 UNO
- NUMBER OF METAL ROOF SHEETS MEASURING 762 WIDE EACH (676/762) = 6096
- 89000'S: DENOTES START OF SET OUT FOR ROOF SHEETS
- NOTE: CONFIRM SET OUT OF TRANSLUCENT SHEETS TO AVOID BEAMS, PENETRATIONS AND WALKWAYS

ROOF TRIM FINISHES

- CLADDING/CAPPING - PARAPET & AWNING FASCIA - COLORBOND 'CATTAGREEN'
- CAPPING - RIDGE ZINCALUME
- CAPPING - MAIN ENTRY GABLE BARGE & PERS POWDERCOAT 'BUNNINGS STUDIO'
- CLADDING VERTICAL ZINCALUME TO 1/2 OF PARAPET
- CLADDING - AWNINGS & GABLE - COMPRESSED FIBRE CEMENT SHEETING - PAINT FINISHES AS SPECIFIED

ROOF BRIEF (PRELIMINARY GUIDE ONLY - TBC)

CLIMATE ZONE SPOT COOLING (TTS WALL)

MAIN ROOF (INCL. TTS):

- INSULATION (R2.7)
- PURLIN MOUNTED SPACERS RAZOR 115mm

MEZZANINE ROOF:

- INSULATION (R3.7 - TBC)
- PURLIN MOUNTED SPACERS RAZOR 115mm

SKYLIGHTS:

- 0% TO WAREHOUSE & MAIN ENTRY
- 5% TO TTS
- 10% TO BAGGED GOODS
- 20% TO GOODS IN CANOPY

GUTTERS - 800 WIDE SUMPS - TO ENG'S DETAIL DP'S - TO ENG'S DETAIL

ROOF MATERIALS LEGEND

- ROOF SHEET COLORBOND SURFIMAT - MINIMUM 0.48 BMT STRAIT MONOCAD ROOF SHEETING OR APPROVED SIMILAR PROFILE. FALLS TO GUTTERS AS NOTED ON PLAN
- TRANSLUCENT ROOF SHEET: TRANSLUCENT PROFILED SKYLIGHTS, AMPLETT 'COOL-LITE CC' IN 5876 RESIN OR FOW 'TOP GLASS COOL-CC' COLOUR: OPAL, BUSHFIRE CONTROL MEASURES
- SHADE SALES: GALE PACIFIC 'PREMIUM HORTSHADE - MEDIUM FOR SWEEP FAN COOLED & EVAP COOLED STORES'
- GALE PACIFIC 'PREMIUM HORTSHADE - HEAVY FOR AIR CONDITIONED STORES' COLOUR: WHITE
- NOTES: SHADE PANELS ANGLED IN A SAWTOOTH PROFILE SO THAT THE HIGH CONNECTIONS ARE ON THE NORTHERN EDGE & LOW CONNECTIONS ON THE SOUTHERN EDGE. ALL OPENINGS BETWEEN CANOPIES SHOULD NOT EXCEED 3m AT THE WEST FRONT. PROVIDE EXTRA COVERAGES 'SHADE SAIL LAYOUT UNLESS NOTED OTHERWISE'
- COMPOSITE SARKING/INSULATION BLANKET: CSR BRASSI 'ANTICOM 100' (TBC) BLANKET - 'THERMOPLAST 980' DECORATIVE FOL FINISH: PRIMER/SHED COLOUR: WHITE
- NOTE: INSTALL IN ACCORDANCE WITH MANUFACTURER'S RECOMMENDATIONS TO ACHIEVE SPECIFIED 'BUNNINGS SARKING TO BE LAD TRAY' THIS IS THE MINIMUM INSULATION REQUIREMENT FOR ALL FULLY ENCLOSED AREAS
- WHERE STORES FALL INTO CLIMATE ZONE 7/8 REQUIRED INSULATION BLANKET IS TO BE INSTALLED TO THE BAGGED GOODS CANOPY AND BM & LY CANOPY. REFER TO THE MECHANICAL SPECIFICATION FOR CLIMATE ZONE MAPS.
- WHITE-FACED SARKING REQUIRED TO ALL UNINSULATED CANOPIES

ROOF ACCESS NOTES:

- ROOF WALKWAY SYSTEM TO BE MIN 600mm WIDE ALUMINIUM OR APPROVED SIMILAR/EQUAL IN STANDARD, FIBRE REINFORCED PLASTIC
- ROOF WALKWAY SYSTEM TO PROVIDE ACCESS TO ALL SERVICABLE EQUIPMENT ON THE ROOF
- LOCATION & EXTENT OF ROOF WALKWAY SYSTEM BE COORDINATED WITH FINAL MECHANICAL EQUIPMENT LOCATIONS & BUNNINGS REPRESENTATIVE
- ROOF SAFETY DESIGN IS INDICATIVE ONLY. INSTALL ACCESS POINTS, SAFETY EQUIPMENT & WARNING SIGNAGE TO MANUFACTURERS SPECIFICATIONS & CURRENT STANDARDS

ALL ROOF ACCESS/SAFETY TO COMPLY WITH AS 1657:2018

NO.	AMENDMENT	DATE	NO.	AMENDMENT	DATE
01	PRELIMINARY ISSUE	25.01.21			
02	PRELIMINARY STRUCTURAL/MECH/SOLAR COORD	21.02.21			
03	CC ISSUE	25.02.21			

This drawing and the design shown herein is the property of John R Brogan & Associates Pty Ltd and shall not be copied or reproduced in part or in whole in any form without the written permission of John R Brogan & Associates Pty Ltd. Sydney and shall be used only for the project for which it was provided. Do not scale from this drawing. Verify dimensions from site and refer any discrepancies to Architects for clarification.

DESIGN & CONSTRUCT HEAD CONTRACTOR

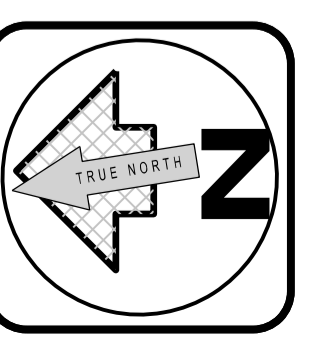
MAINBRACE CONSTRUCTIONS PTY LTD
4/170 PACIFIC HWY GREENWICH NSW 2165
PH: 02 9251 1668

PRINCIPAL
BUNNINGS warehouse

JOHN R. BROGAN & ASSOCIATES PTY. LIMITED
ARCHITECTS, PLANNERS & COMMERCIAL INTERIOR DESIGNERS

37 PITT ST. SYDNEY NSW 2000
PH: (02) 9 221 2833 FAX: (02) 9 251 4741
EMAIL: jrb@brogans.com.au

EST. 1927
A.B.N. 93 003 284 759



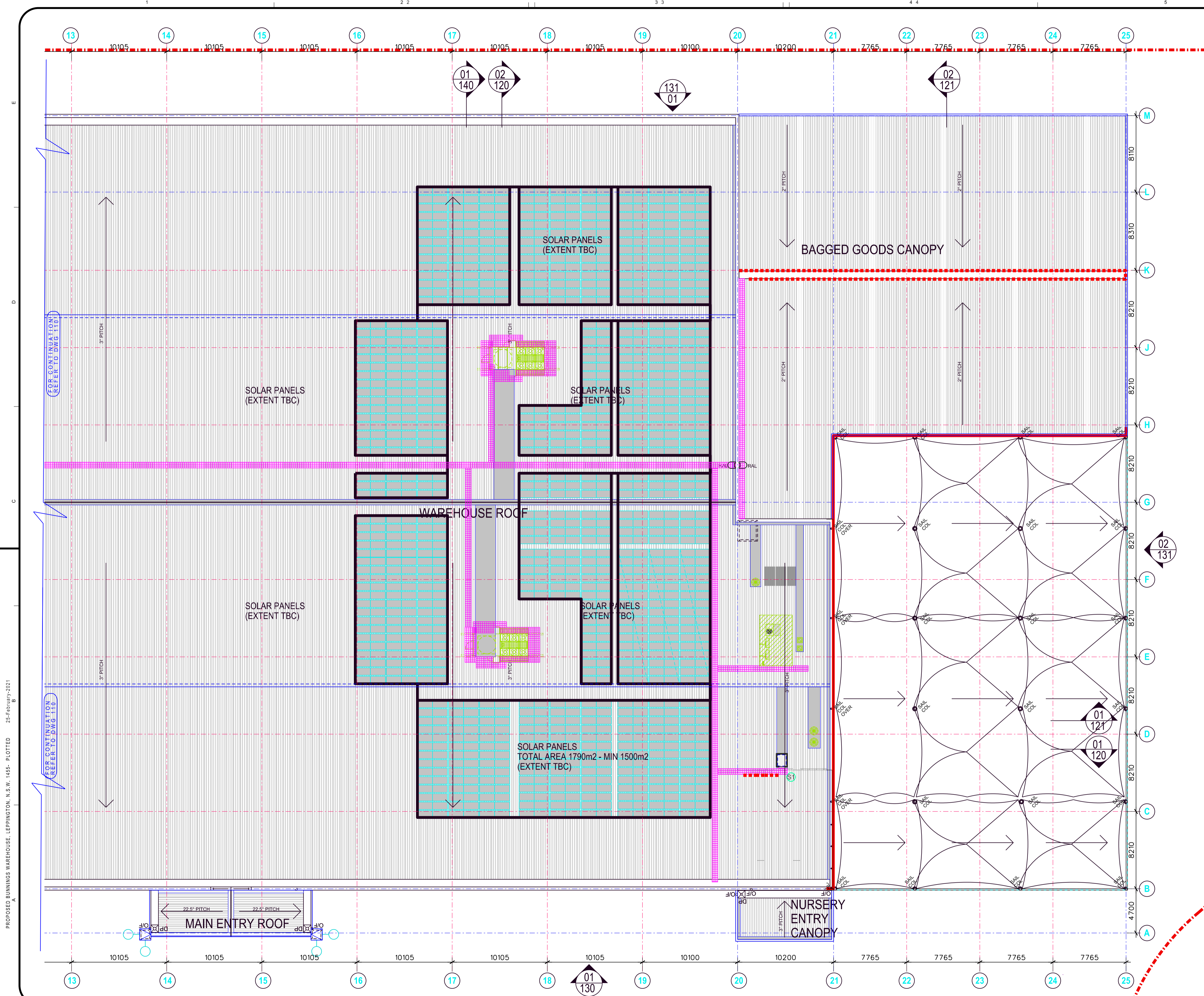
PROP BUNNINGS WAREHOUSE LEPPINGTON
LOT 3 DP TBC
BRINGELLY RD BUSINESS HUB, SKYLINE DR
HORNINGSEA PARK NSW 2171

SCALE: 1:200
DATE: AUG 20

PLAN - ROOF - NORTH

PROJ. NO. 1455
DRG. NO. 110
AMD NO. 2

PROPOSED BUNNINGS WAREHOUSE, LEPPINGTON, N.S.W. 1455 - PLOTTED 25-FEBRUARY-2021



CAMPBELLTOWN RECORD OF SERVICES & RACKING UPDATES		
SERVICE/DISCIPLINE	DATE RCVD	REVISION
ARCHITECTURAL	CURRENT	-
STRUCTURAL	19.02.21	TENDER
CIVIL	16.02.21	A
RACKING LAYOUT WH (C)	03.02.21	RPO_01.F
BANNER LAYOUT WH	TBA	-
ELECTRICAL LAYOUT	TBA	-
- CAR PARK	TBA	-
- WAREHOUSE	TBA	-
LIGHTING LAYOUT	TBA	-
- CAR PARK	TBA	-
- WAREHOUSE	TBA	-
MECHANICAL LAYOUT	18.02.21	P1
- WAREHOUSE	TBA	-
- TTS	TBA	-
- MEZZANINE/AMENITIES	TBA	-
HYDRAULIC/SIPHONIC LAYOUT	24.02.21	2
FIRE SERVICES	TBA	-
- WAREHOUSE	TBA	-
FIRE REPORT	--	--
LANDSCAPE	TBA	-

* - NO CAD FILE FOR REFERENCE

SERVICE COORDINATION NOTE:
COORDINATE ALL SERVICES & BANNER LOCATIONS
SEE DWG. 410 FOR REQ'D CLEARANCES

ROOF MECHANICAL EQUIPMENT LEGEND

- PAC: FUSION MODULAR HVAC SYSTEM
- TTS EF: TTS EXHAUST FANS
- CU: CONDENSER UNIT
- EF: ROOF MOUNTED EXHAUST FAN

ROOF MATERIALS LEGEND

ROOF SHEET COLORBOND SURFMIST: MINIMUM 0.48 BMT STRAIGHT MONOCOLOR ROOF SHEETING OR APPROVED SIMILAR PROFILE. FALLS TO GUTTERS AS NOTED ON PLAN.

TRANSLUCENT ROOF SHEET: TRANSLUCENT PROFILED SKYLIGHTS. AMPLITUDE 1000 LITE 120" x 3576 RESIN OR FGM "TOP GLASS COOL CO." COLORBOND. BUSHFIRE CONTROL MEASURES.

SHADE SALES: GALE PACIFIC "PREMIUM HORTSHADE" - MEDIUM FOR SWEEP FAN COOLED & EVAP COOLED STORES. GALE PACIFIC "PREMIUM HORTSHADE" - HEAVY FOR AIR CONDITIONED STORES. COLOUR: WHITE.

NOTES: PANELS ANGLED IN A SAWTOOTH PROFILE SO THAT THE HIGH CONNECTIONS ARE ON THE NORTHERN EDGE & LOW CONNECTIONS ON THE SOUTHERN EDGE. ALL OPENINGS BETWEEN CANOPIES SHOULD NOT EXCEED 3m AT THE WIDEST POINT. PROVIDE EXTRA COVERING TO MATCH GAL LAYOUT UNLESS NOTED OTHERWISE.

COMPOSITE SARKING/INSULATION BLANKET: CSR BRADFORD "ANTICON 100" (TBC) BLANKET. "THERMOPLAST 980" DECORATIVE FOL. FINISH: PREFINISHED. COLOUR: WHITE.

NOTE: INSTALL IN ACCORDANCE WITH MANUFACTURERS' RECOMMENDATIONS TO ACHIEVE SPECIFIED CEILING SARKING TO BE LADY TAIT. THIS IS THE MINIMUM INSULATION REQUIREMENT FOR ALL FULLY ENCLOSED AREAS.

WHERE STORES FALL INTO CLIMATE ZONE 7-8 REGION INSULATION BLANKET IS TO BE INSTALLED TO THE BAGGED GOODS CANOPY AND M.V. CANOPIES REFER TO THE MECHANICAL SPECIFICATION FOR CLIMATE ZONE MAPS.

WHITE-FACED SARKING REQUIRED TO ALL UNINSULATED CANOPIES.

EJ: EXPANSION JOINT

ROOF ACCESS WALKWAY

DRAL: ROOF ACCESS LADDER. FIXED RUNG-TYPE ACCESS LADDER.

FINISH POWDERCOAT "BUNNINGS GREEN" WHERE VISIBLE BY CUSTOMERS FROM GROUND LEVEL OR SURROUNDING STREETS.

NOTE: INSTALL LADDER TO ACCESS LOWER LEVELS IN COMPLIANCE WITH ALL RELEVANT CODES & REGULATIONS. PROVIDE LADDER CAGE IF REQUIRED.

ROOF WARNING SIGN - "DANGER"

ROOF WARNING SIGN - "BRITTLE SURFACE" (OR SIMILAR)

INSTALL NOM 150x225 CIBOND (OR SIMILAR) SIGNAGE STAINING "BRITTLE SURFACE" LOCATED ON THE FIRST SKYLIGHT ADJACENT TO ROOF ACCESS POINT.

MOUNT AT 70° TO HORIZONTAL. FINAL EXTENT TO BE COORDINATED WITH A QUALIFIED ACCESS ROOF CONSULTANT.

HANDRAL TO WALKWAY/BOX GUTTER

PROVIDE JURALCO GUARDSAFE HANDRAL TO:

- ALL WALKWAYS WITHIN 3M OF ROOF EDGE WITHOUT M.V. HIGH PARAPET. TBC WITH ACCESS SUPPLIER
- ALL WALKWAYS WITHIN 1.4M OF ROOF SKYLIGHT. TBC WITH ACCESS SUPPLIER
- GENERALLY TO INSIDE FACE OF FASCIA WHERE TOP OF FASCIA IS LESS THAN 1000mm ABOVE HIGH POINT IN BOX GUTTER UNO.

HANDRAL & SUPPORTS THAT PROJECT ABOVE THE BAGGED GOODS CANOPY ARE TO BE POWDERCOAT PAINTED "BUNNINGS GREEN"

ROOF SHEET DIMENSIONS SET OUT LEGEND

TRANSLUCENT ROOF SHEET 1 SHEET WIDE. TYPICAL - 762 UNO

NUMBER OF METAL ROOF SHEETS MEASURING 182 WIDE EACH (18x762) - 6096

NOTE: DENOTES START OF SET OUT FOR ROOF SHEETS

NOTE: CONFIRM SET OUT OF TRANSLUCENT SHEETS TO AVOID BEAMS, PENETRATIONS AND WALKWAYS

ROOF TRIM FINISHES

- C1: CLADDING/CAPPING - PARAPET & AWNING FASCIA - COLORBOND CATTAGEEEN
- C2: CAPPING - RIDGE ZINCALUME
- C3: CAPPING - MAIN ENTRY CABLE BARGE & PIERS POWDERCOAT "BUNNINGS STUCCO"
- C4: CLADDING VERTICAL ZINCALUME TO TOP OF PARAPET
- C5: CLADDING - AWNINGS & CABLE - COMPRESSED FIBRE CEMENT SHEETING - PAINT FINISHES AS SPECIFIED

ROOF BRIEF (PRELIMINARY GUIDE ONLY - TBC)

CLIMATE ZONE SPOT COOLING (TTS WALL)

MAIN ROOF (INCL. TTS):

- INSULATION (R2.7)
- PURLIN MOUNTED SPACERS RAZOR 115mm

MEZZANINE ROOF:

- INSULATION (R3.7 - TBC)
- PURLIN MOUNTED SPACERS RAZOR 115mm

SKYLIGHTS:

- 0% TO WAREHOUSE & MAIN ENTRY
- 5% TO TTS
- 10% TO BAGGED GOODS
- 20% TO GOODS IN CANOPY

GUTTERS - 800 WIDE SUMPS - TO ENG'S DETAIL DP's - TO ENG'S DETAIL

INDICATIVE
2100m2 PV PANELS
- TO BE CONFIRMED

PROPOSED BUNNINGS WAREHOUSE, LEPPINGTON, N.S.W. 1455 - PLOTTED 25-February-2021

NO.	AMENDMENT	DATE	NO.	AMENDMENT	DATE
0	PRELIMINARY ISSUE	25.01.21			
1	PRELIMINARY ISSUE	19.02.21			
2	PRELIM. STRUCTURE/MECH/SOLAR COORD.	22.02.21			
3	CC. ISSUE	25.02.21			

This drawing and the design shown herein is the property of John R Brogan & Associates Pty Ltd and shall not be copied nor reproduced in part or in whole in any form without the written permission of John R Brogan & Associates Pty Ltd. Sydney and shall be used only for the project for which it was provided. Do not scale from this drawing. Verify dimensions from site and refer any discrepancies to Architects for clarification.

DESIGN & CONSTRUCT HEAD CONTRACTOR

MAINBRACE MAINBRACE CONSTRUCTIONS PTY LTD
4/170 PACIFIC HWY GREENWICH NSW 2168
PRINCIPAL **BUNNINGS** warehouse

JOHN R. BROGAN & ASSOCIATES PTY. LIMITED
ARCHITECTS, PLANNERS & COMMERCIAL INTERIOR DESIGNERS

37 PITT ST. SYDNEY NSW 2000
PH: (02) 9 221 2833 FAX: (02) 9 251 4741
EMAIL: jrb@brogans.com.au

A.B.N. 93 003 284 759



PROP BUNNINGS WAREHOUSE LEPPINGTON
LOT 3 DP TBC
BRINGELLY RD BUSINESS HUB, SKYLINE DR
HORNINGSEA PARK NSW 2171

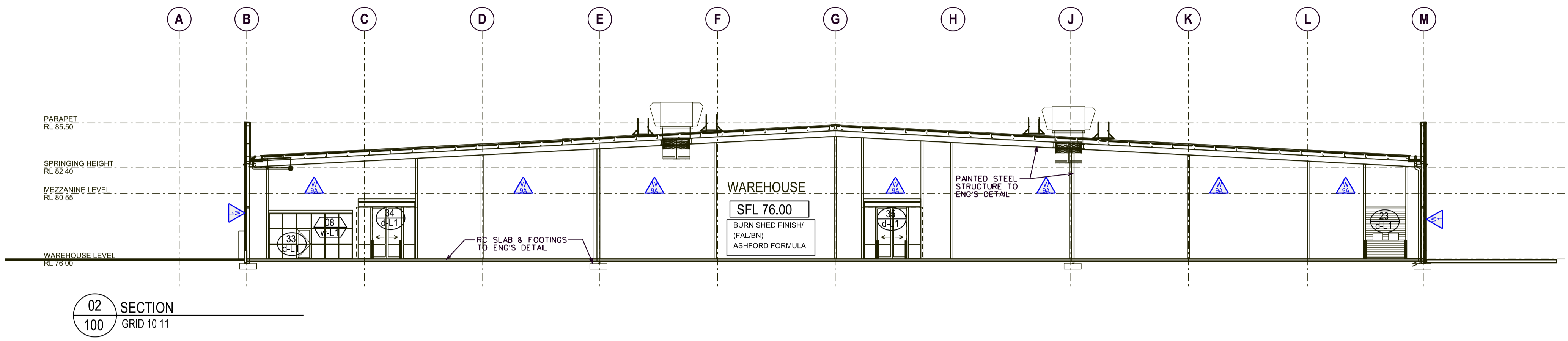
SCALE 1:200
DATE AUG 20

PROJ. NO. 1455
DRG. NO. 111
AMD NO. 3

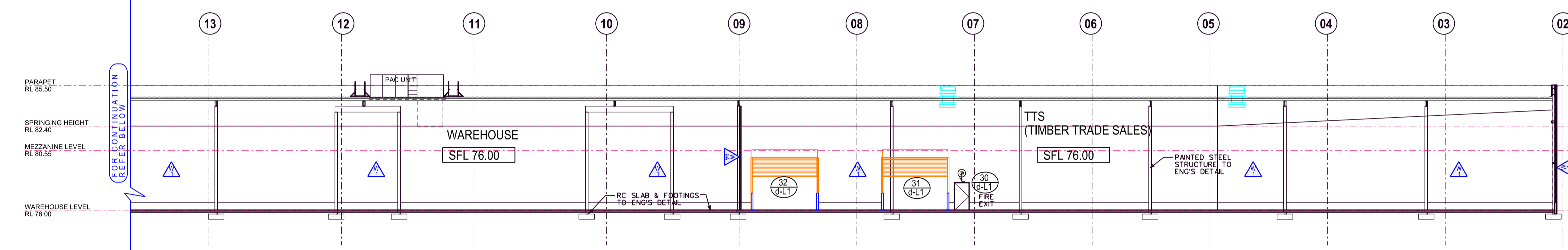
PLAN - ROOF - SOUTH

DRAWING LEGEND	
	DOOR NUMBER
	WINDOW NUMBER
	LOUVRE NUMBER
	COLUMN NUMBER
	WALL TYPE
	CEILING HEIGHT
	STRUCTURAL FLOOR LEVEL
	FINISHED FLOOR LEVEL
	SPECIFIED FLOOR FINISH

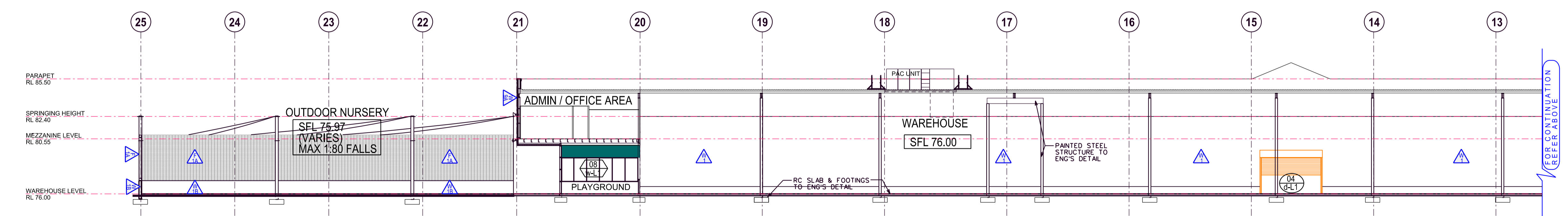
WALL & BARRIER TYPES LEGEND	
	<p>W1 - WAREHOUSE RC PANEL DADO WALL & NON-LOAD BEARING PIR (REFRIGERATION) PANEL</p> <p>MATERIAL: MIN 125mm THICK RC PANEL WALL TO 600mm ABOVE FFL WITH NOM 80-150mm NON-LOAD BEARING INSULATED WALL PANEL (PIR) ABOVE ON STEEL STRUCTURE TO EXTEND TO 950mm AFFL</p> <p>EXTERNAL FACE: GROUND TO 2300mm HIGH - RC & PIR PANEL</p> <p>COLOUR: DULUX SHADE REF: 8746 'BUNNINGS BUILDING WHITE'</p> <p>INTERNAL FACE: FROM 2300mm HIGH TO TOP OF PARAPET - PIR PANEL</p> <p>FINISH: PRE FINISHED COLORBOND COLOUR: 'CATTAGREEN'</p> <p>EXTERNAL FACE: ADJACENT TO OUTDOOR NURSERY (BELOW BAGGED GOODS AWNING - PIR PANEL</p> <p>COLOUR: PRE FINISHED COLORBOND COLOUR: 'THREDBO WHITE'</p> <p>INTERNAL FACE: ADJACENT TO OUTDOOR NURSERY (ABOVE BAGGED GOODS AWNING - PIR PANEL</p> <p>FINISH: PRE FINISHED COLORBOND COLOUR: 'CATTAGREEN'</p> <p>COLOUR: PRE FINISHED COLORBOND COLOUR: 'CATTAGREEN'</p> <p>INTERNAL FACE: FFL TO 600mm HIGH - RC & PIR PANEL</p> <p>COLOUR: DULUX SHADE REF: 8746 'BUNNINGS BUILDING WHITE'</p> <p>INTERNAL FACE: FROM 600mm HIGH TO FULL (OUTTER) HEIGHT - PIR PANEL</p> <p>FINISH: PRE FINISHED COLORBOND COLOUR: 'THREDBO WHITE'</p>
	<p>W2 - WAREHOUSE RC PANEL WALL</p> <p>MATERIAL: RC PANEL WALL WITH 'Y' GROOVE AT 2300mm HIGH TO STRUCTURAL ENG'S DETAIL (RB AS NOTED)</p> <p>EXTERNAL FACE: FFL TO 2300mm HIGH - PAINT DULUX 'ACRA-SHIELD' COATING OR 'ACRA-SHIELD' COATING AS NOTED</p> <p>COLOUR: DULUX SHADE REF: 8746 'BUNNINGS BUILDING WHITE'</p> <p>INTERNAL FACE: FROM 2300mm HIGH TO TOP OF WALL - PAINT DULUX 'ACRA-TEX' TEXTURE/ OR 'ACRA-SHIELD' COATING AS NOTED</p> <p>COLOUR: DULUX SHADE REF: 8745 'BUNNINGS BUILDING GREEN'</p>
	<p>W3 - OUTDOOR NURSERY RC PANEL 200mm HIGH DADO WALL</p> <p>MATERIAL: 1200 HIGH RC PANEL WALL TO STRUCTURAL ENG'S DETAIL</p> <p>EXTERNAL FACE: FFL TO 1200mm HIGH</p> <p>FINISH: PAINT DULUX 'ACRA-SHIELD' COATING</p> <p>COLOUR: DULUX SHADE REF: 8746 'BUNNINGS BUILDING WHITE'</p> <p>INTERNAL FACE/ TOP OF WALL: PAINT FINISH AS FOR EXTERNAL FACE</p>
	<p>W4 - NON-LOAD BEARING PIR (REFRIGERATION) PANEL</p> <p>MATERIAL: NOM 100-150mm NON-LOAD BEARING INSULATED WALL PANEL (PIR) ON STEEL STRUCTURE TO EXTEND TO UPSIDE OF RAFTER</p> <p>FINISH: FFL TO FULL HEIGHT, BOTH SIDES (WAREHOUSE & TTS)</p> <p>COLOUR: PRE FINISHED COLORBOND COLOUR: 'THREDBO WHITE'</p>
	<p>W5 - NON-FIRE RATED PB WALL UP TO 8500 HIGH</p> <p>WALL HEIGHT NOT TO EXCEED 6300mm, NON-FIRE RATED 64mm x 0.55mm STUDS AT MAX 450mm SPACINGS, ONE LAYER OF 10mm THK PLASTERBOARD EACH SIDE.</p>
	<p>F1A - OUTDOOR NURSERY FINGERPROOF FENCE (TO DADO WALL)</p> <p>MATERIAL: 3775mm HIGH FENCE OF HARDWOOD HT MESH PANELS WITH 70 x 8 x 4mm APERTURE ON MIN 125x75 RIS POSTS TO ENG'S DETAIL CONTINUOUS 40 x 40 CAL ANGLE BOTTOM RAIL AND METAL CASING BEAD TO TOP WITH SHEAR FIXING PANELS TO BE OVERLAPPED ON POST & EXCESS MESH CUT BACK TO EDGE OF POST. 50mm WS FLAT COVERPLATE FIXED TO POST OVER JOINTS. PANELS TO BE SECURED USING GALVANISED SHEAR BOLT, RANING PANELS TO SECURE JOINTS. TENSILE STRENGTH IS 540-850 N/mm²</p> <p>FINISH: GALVANISED & UNPAINTED</p> <p>NOTES: EXTEND FENCE POSTS BY 600mm WHERE REQD FOR FLOOD LIGHTING. MAX. 20mm GAP BTW FENCE/GATE & ADJACENT STRUCTURE.</p>
	<p>F2A - 2700 HIGH EXTERNAL PERIMETER FENCE</p> <p>MATERIAL: 2700 C/M FENCE 2000 HIGH HEAVY DUTY 3.15mm GAUGE CHAIN WIRE MESH 50 x 50 APERTURE 3 N/L - RINGS BARBED WIRE ABOVE - DOUBLE STRANDS TWISTED IN 'Z' PATTERN @ 200 CTRS CAL MESH AND POSTS & UNPAINTED</p> <p>FINISH: UNPAINTED</p>



02 SECTION
100 GRID 10 11



01A SECTION
100 PART - GRID E F



01 SECTION
100 PART - GRID E F

25-February-2021

NO.	AMENDMENT	DATE	NO.	AMENDMENT	DATE
0.	PRELIMINARY ISSUE	09.02.21			
1.	CC. ISSUE	25.02.21			

This drawing and the design shown herein is the property of John R Brogan & Associates Pty Ltd and shall not be copied or reproduced in part or in whole in any form without the written permission of John R Brogan & Associates Pty Ltd. Sydney and shall be used only for the project for which it was provided. Do not scale from this drawing. Verify dimensions from site and refer any discrepancies to Architects for clarification.

DESIGN & CONSTRUCT HEAD CONTRACTOR

MAINBRACE MAINBRACE CONSTRUCTIONS PTY LTD
4/170 PACIFIC HWY GREENWICH NSW 2165

PRINCIPAL
BUNNINGS warehouse

JOHN R. BROGAN & ASSOCIATES PTY. LIMITED
ARCHITECTS, PLANNERS & COMMERCIAL INTERIOR DESIGNERS

37 PITT ST. SYDNEY NSW 2000
PH: (02) 9 221 2833 FAX: (02) 9 251 4741
EMAIL: jrb@brogans.com.au

A.B.N. 93 003 284 759

PROP BUNNINGS WAREHOUSE LEPPINGTON
LOT 3 DP TBC
BRINGELLY RD BUSINESS HUB, SKYLINE DR
HORNINGSEA PARK NSW 2171

SCALE
1:200

DATE
AUG 20

SECTIONS
- SHEET 01

PROJ. NO.
1455

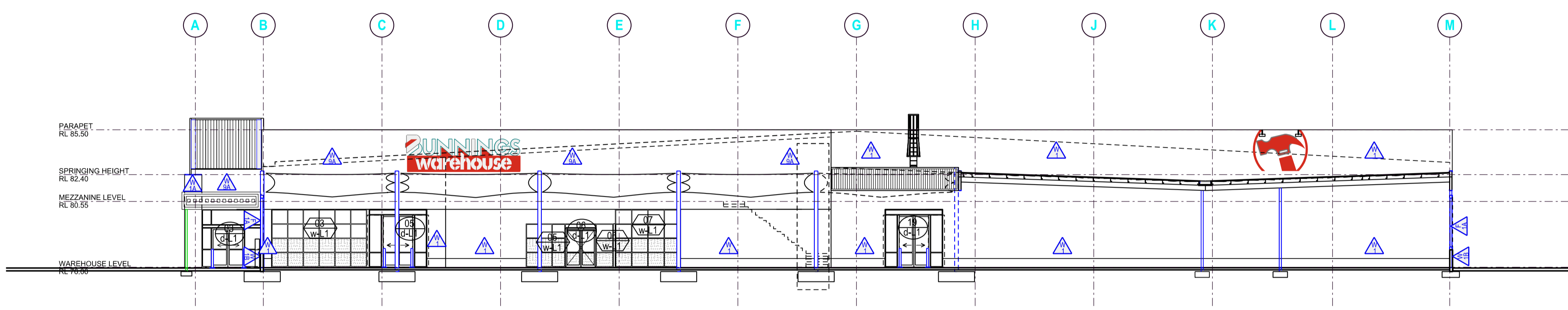
DRG. NO.
120

AMD NO.
1

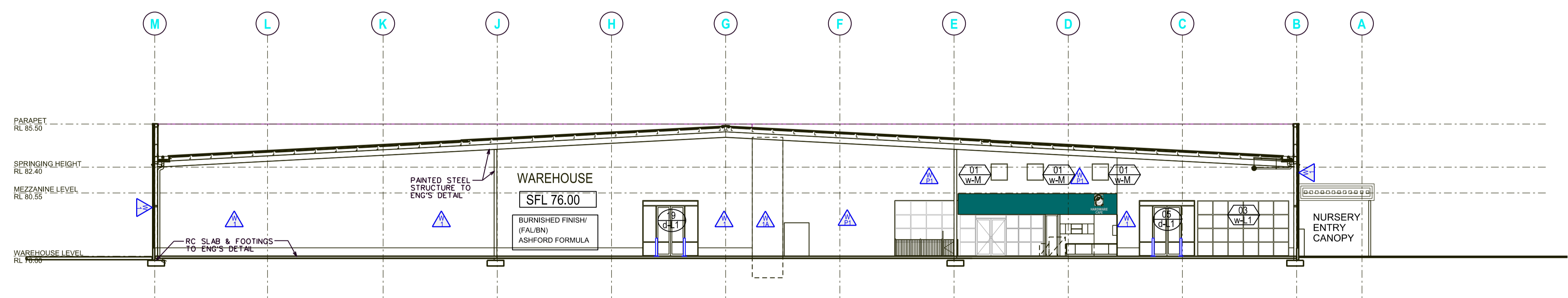
PROPOSED BUNNINGS WAREHOUSE, LEPPINGTON, N.S.W. 1455 - PLOTTED 25-February-2021

DRAWING LEGEND	
	DOOR NUMBER
	WINDOW NUMBER
	LOUVRE NUMBER
	COLUMN NUMBER
	WALL TYPE
	CEILING HEIGHT
	STRUCTURAL FLOOR LEVEL
	FINISHED FLOOR LEVEL
	SPECIFIED FLOOR FINISH

WALL & BARRIER TYPES LEGEND	
	W1 - WAREHOUSE RC PANEL DADO WALL & NON-LOAD BEARING PR (REFRIGERATION) PANEL MATERIAL: MIN 125mm THICK RC PANEL WALL TO 600mm ABOVE FFL WITH NOM 50-100mm NON-LOAD BEARING INSULATED WALL PANEL (PR) ABOVE ON STEEL STRUCTURE TO EXTEND TO 9500mm AFFL EXTERNAL FACE FINISH: GROUND TO 2100mm HIGH - RC & PR PANEL COLOUR: DULUX SHADE REF: 87746 'BUNNINGS BUILDING WHITE' EXTERNAL FACE FINISH: FROM 2100mm HIGH TO TOP OF PARAPET - PR PANEL COLOUR: PRE FINISHED COLORBOND COLOUR: 'CATTAGREEN' EXTERNAL FACE FINISH: ADJACENT TO OUTDOOR NURSERY (BELOW BAGGED GOODS AWNING) - PR PANEL COLOUR: PRE FINISHED COLORBOND COLOUR: 'THREDBO WHITE' EXTERNAL FACE FINISH: ADJACENT TO OUTDOOR NURSERY ABOVE BAGGED GOODS AWNING - PR PANEL COLOUR: PRE FINISHED COLORBOND COLOUR: 'CATTAGREEN' INTERNAL FACE FINISH: FFL TO 600mm HIGH - RC & PR PANEL COLOUR: DULUX SHADE REF: 87746 'BUNNINGS BUILDING WHITE' INTERNAL FACE FINISH: FROM 600mm HIGH TO FULL GUTTER HEIGHT - PR PANEL COLOUR: PRE FINISHED COLORBOND COLOUR: 'THREDBO WHITE'
	W1A - WAREHOUSE RC PANEL WALL MATERIAL: RC PANEL WALL WITH 'V' GROOVE AT 2100mm HIGH TO STRUCTURAL ENDS DETAIL (BS AS NOTED) EXTERNAL FACE FINISH: FFL TO 2100mm HIGH - PAINT DULUX 'ACRA-TEX' TEXTURE OR 'ACRA-SHIELD' COATING AS NOTED COLOUR: DULUX SHADE REF: 87746 'BUNNINGS BUILDING WHITE' EXTERNAL FACE FINISH: FROM 2100mm HIGH TO TOP OF WALL - PAINT DULUX 'ACRA-TEX' TEXTURE / OR 'ACRA-SHIELD' COATING AS NOTED COLOUR: DULUX SHADE REF: 87745 'BUNNINGS BUILDING GREEN'
	W1B - OUTDOOR NURSERY RC PANEL 1200mm HIGH DADO WALL MATERIAL: 1200 HIGH RC PANEL WALL TO STRUCTURAL ENDS DETAIL EXTERNAL FACE FINISH: FFL TO 1200mm HIGH COLOUR: PAINT DULUX 'ACRA-SHIELD' COATING INTERNAL FACE FINISH: DULUX SHADE REF: 87746 'BUNNINGS BUILDING WHITE' TOP OF WALL: PAINT FINISH AS FOR EXTERNAL FACE
	W1A - NON-LOAD BEARING PR (REFRIGERATION) PANEL MATERIAL: NOM 100-150mm NON-LOAD BEARING INSULATED WALL PANEL (PR) ON STEEL STRUCTURE TO EXTEND TO U/SIDE OF RAFTER FINISH: FFL TO FULL HEIGHT, BOTH SIDES (WAREHOUSE & TTS) COLOUR: PRE FINISHED COLORBOND COLOUR: 'THREDBO WHITE'
	W1P - NON-FIRE-RATED PB WALL UP TO 6300mm HIGH WALL HEIGHT NOT TO EXCEED 6300mm, NON-FIRE RATED 8mm x 3.55mm STUDS AT WALL 450mm SPACINGS, ONE LAYER OF 10mm THK PLASTERBOARD EACH SIDE.
	F1A - OUTDOOR NURSERY FINGERPROOF FENCE (TO DADO WALL) MATERIAL: 3775mm HIGH FENCE OF HARDENED HT MESH PANELS WITH 70 x 8 x 4mm APERTURE ON min 125x75 RYS POSTS TO ENDS DETAIL CONTINUOUS 40 x 40 CAL ANGLE BOTTOM RAIL AND METAL CASING BEAD TO TOP WITH SHEAR FIXING PANELS TO BE OVERLAPPED ON POST & EXCESS MESH CUT BACK TO EDGE OF POST. 50mm NS FLAT COVERPLATE FIXED TO POST OVER JOINTS. PANELS TO BE SECURED USING GALVANIZED SHEAR BOLTS. RAILING PANELS TO BE SECURED USING GALVANIZED SHEAR BOLTS. FINISH: GALVANIZED & UNPAINTED NOTES: EXTEND FENCE POSTS BY 600mm WHERE REQD FOR FLOOD LIGHTING. MAX. 20mm GAP BTW FENCE/GATE & ADJACENT STRUCTURE.
	F2A - 2700 HIGH EXTERNAL PERIMETER FENCE MATERIAL: 2700 HIGH FENCE 200 HIGH HEAVY DUTY 3.15mm GAUGE CHAIN WIRE MESH 30 x 50 APERTURE 3.16 x 3.16mm BARBED WIRE ABOVE - DOUBLE STRANDS TWISTED IN 'DWA' PATTERN @ 200 CTRS CAL MESH AND POSTS & UNPAINTED



04 SECTION
100 GRID 22 23



03 SECTION
100 GRID 18 17

NO.	AMENDMENT	DATE	NO.	AMENDMENT	DATE
01	PRELIMINARY ISSUE	09.02.21			
02	CR. ISSUE	25.02.21			

This drawing and the design shown herein is the property of John R Brogan & Associates Pty Ltd and shall not be copied or reproduced in part or in whole in any form without the written permission of John R Brogan & Associates Pty Ltd. Sydney and shall be used only for the project for which it was provided. Do not scale from this drawing. Verify dimensions from site and refer any discrepancies to Architects for clarification.

DESIGN & CONSTRUCT HEAD CONTRACTOR

MAINBRACE CONSTRUCTIONS MAINBRACE CONSTRUCTIONS PTY LTD
4/170 PACIFIC HWY GREENWICH NSW 2165
PRINCIPAL **BUNNINGS warehouse**

JOHN R. BROGAN & ASSOCIATES PTY. LIMITED
ARCHITECTS, PLANNERS & COMMERCIAL INTERIOR DESIGNERS

37 PITT ST. SYDNEY NSW 2000
PH: (02) 9 221 2833 FAX: (02) 9 251 4741
EMAIL: jrb@brogans.com.au

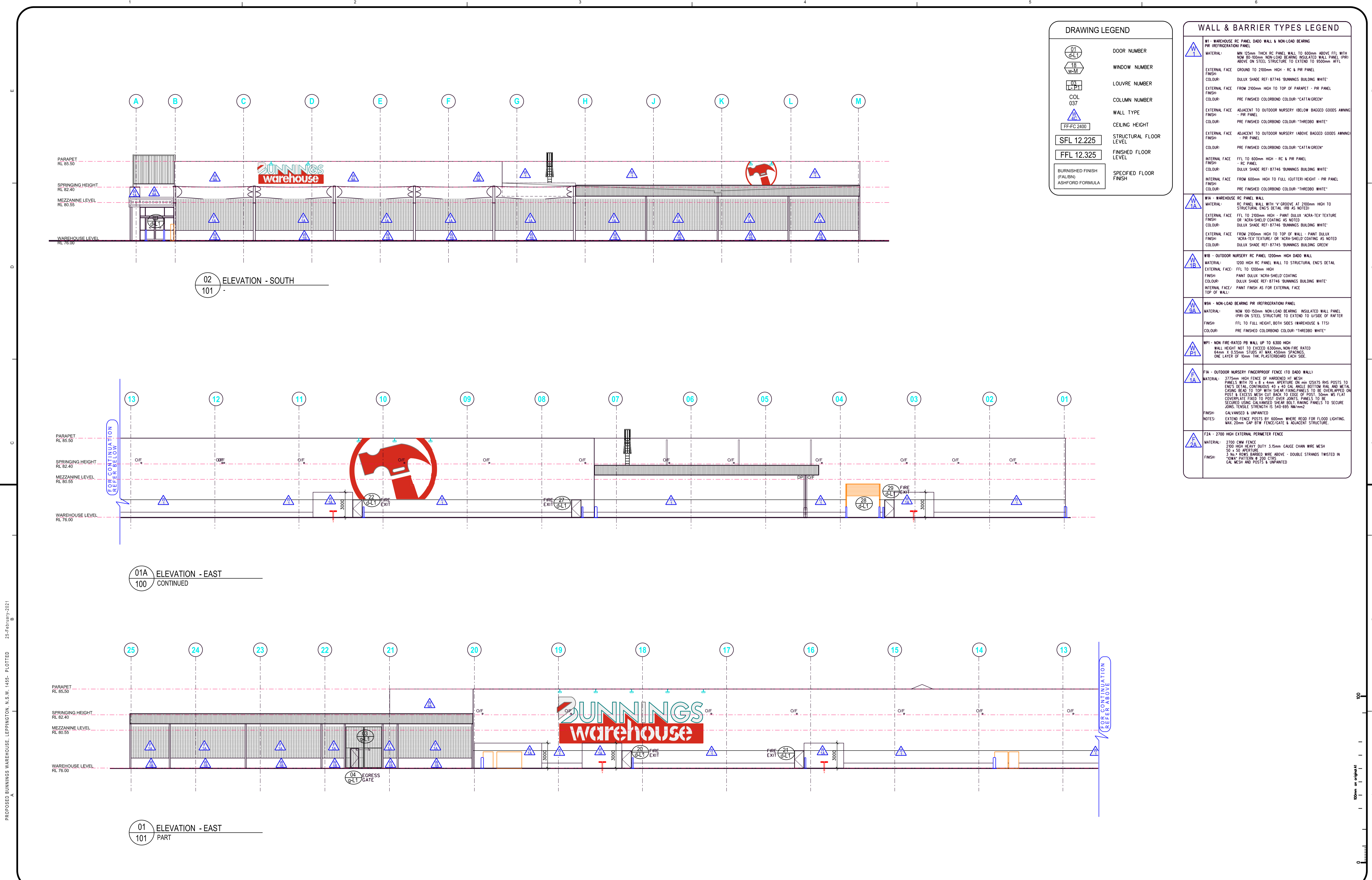
A.B.N. 93 003 284 759

PROP BUNNINGS WAREHOUSE LEPPINGTON
LOT 3 DP TBC
BRINGELLY RD BUSINESS HUB, SKYLINE DR
HORNINGSEA PARK NSW 2171

SCALE 1:200
DATE AUG 20

SECTIONS - SHEET 02

PROJ. NO. 1455
DRG. NO. 121
AMD NO. 1



DRAWING LEGEND	
	DOOR NUMBER
	WINDOW NUMBER
	LOUVRE NUMBER
	COLUMN NUMBER
	WALL TYPE
	CEILING HEIGHT
	STRUCTURAL FLOOR LEVEL
	FINISHED FLOOR LEVEL
	SPECIFIED FLOOR FINISH

WALL & BARRIER TYPES LEGEND	
	<p>W1 - WAREHOUSE RC PANEL DADO WALL & NON-LOAD BEARING PIR (REFRIGERATION) PANEL</p> <p>MATERIAL: MIN 125mm THICK RC PANEL WALL TO 600mm ABOVE FFL WITH NOM 80-100mm NON-LOAD BEARING INSULATED WALL PANEL (PRI) ABOVE ON STEEL STRUCTURE TO EXTEND TO 9500mm AFFL</p> <p>EXTERNAL FACE: GROUND TO 2100mm HIGH - RC & PIR PANEL</p> <p>FINISH: DULUX SHADE REF: 87746 'BUNNINGS BUILDING WHITE'</p> <p>INTERNAL FACE: FROM 2100mm HIGH TO TOP OF PARAPET - PIR PANEL</p> <p>COLOUR: PRE FINISHED COLORBOND COLOUR: 'CATTIAGREEN'</p> <p>EXTERNAL FACE: ADJACENT TO OUTDOOR NURSERY BELOW BAGGED GOODS AWNING</p> <p>FINISH: PIR PANEL</p> <p>COLOUR: PRE FINISHED COLORBOND COLOUR: 'THREDDO WHITE'</p> <p>INTERNAL FACE: ADJACENT TO OUTDOOR NURSERY ABOVE BAGGED GOODS AWNING</p> <p>FINISH: PIR PANEL</p> <p>COLOUR: PRE FINISHED COLORBOND COLOUR: 'CATTIAGREEN'</p> <p>INTERNAL FACE: FFL TO 600mm HIGH - RC & PIR PANEL</p> <p>FINISH: DULUX SHADE REF: 87746 'BUNNINGS BUILDING WHITE'</p> <p>INTERNAL FACE: FROM 600mm HIGH TO FULL (OUTTER) HEIGHT - PIR PANEL</p> <p>COLOUR: PRE FINISHED COLORBOND COLOUR: 'THREDDO WHITE'</p>
	<p>W1A - WAREHOUSE RC PANEL WALL</p> <p>MATERIAL: RC PANEL WALL WITH 'Y' GROOVE AT 2100mm HIGH TO STRUCTURAL ENG'S DETAIL (RS AS NOTED)</p> <p>EXTERNAL FACE: FFL TO 2100mm HIGH - PAINT DULUX 'ACRA-SHIELD' TEXTURE OR 'ACRA-SHIELD' COATING AS NOTED</p> <p>FINISH: DULUX SHADE REF: 87746 'BUNNINGS BUILDING WHITE'</p> <p>INTERNAL FACE: FROM 2100mm HIGH TO TOP OF WALL - PAINT DULUX 'ACRA-SHIELD' TEXTURE OR 'ACRA-SHIELD' COATING AS NOTED</p> <p>COLOUR: DULUX SHADE REF: 87746 'BUNNINGS BUILDING GREEN'</p>
	<p>W1B - OUTDOOR NURSERY RC PANEL 1200mm HIGH DADO WALL</p> <p>MATERIAL: 1200 HIGH RC PANEL WALL TO STRUCTURAL ENG'S DETAIL</p> <p>EXTERNAL FACE: FFL TO 1200mm HIGH</p> <p>FINISH: PAINT DULUX 'ACRA-SHIELD' COATING</p> <p>COLOUR: DULUX SHADE REF: 87746 'BUNNINGS BUILDING WHITE'</p> <p>INTERNAL FACE/ TOP OF WALL: PAINT FINISH AS FOR EXTERNAL FACE</p>
	<p>W1A - NON-LOAD BEARING PIR (REFRIGERATION) PANEL</p> <p>MATERIAL: NOM 100-150mm NON-LOAD BEARING INSULATED WALL PANEL (PRI) ON STEEL STRUCTURE TO EXTEND TO US/DE OF RAFTER</p> <p>FINISH: FFL TO FULL HEIGHT, BOTH SIDES (WAREHOUSE & TTS)</p> <p>COLOUR: PRE FINISHED COLORBOND COLOUR: 'THREDDO WHITE'</p>
	<p>W1P1 - NON-FIRE RATED PB WALL UP TO 6300mm HIGH</p> <p>WALL HEIGHT NOT TO EXCEED 6300mm, NON-FIRE RATED</p> <p>64mm X 0.55mm STUDS AT MAX 450mm SPACINGS</p> <p>ONE LAYER OF 10mm THK PLASTERBOARD EACH SIDE</p>
	<p>F1A - OUTDOOR NURSERY FENCEPROOF FENCE (TO DADO WALL)</p> <p>MATERIAL: 3775mm HIGH FENCE OF HARDENED HT MESH PANELS WITH 70 x 8 x 4mm APERTURE ON MIN 125x75 RHS POSTS TO ENG'S DETAIL CONTINUOUS 40 x 40 CAL ANGLE BOTTOM RAIL AND METAL CASING BEAD TO TOP WITH SHEAR FINING PANELS TO BE OVERLAPPED ON POST & EXCESS MESH CUT BACK TO EDGE OF POST. 50mm HD FLAT COVERPLATE FIXED TO POST OVER JOINTS. PANELS TO BE SECURED USING GALVANISED SHEAR BOLT RAKING PANELS TO SECURE JOINTS. TENSILE STRENGTH IS 540-995 NM/mm².</p> <p>FINISH: GALVANISED & UNPAINTED</p> <p>NOTES: EXTEND FENCE POSTS BY 600mm WHERE REQD FOR FLOOD LIGHTING. MAX 20mm GAP B/W FENCE/GATE & ADJACENT STRUCTURE.</p>
	<p>F2A - 2700 HIGH EXTERNAL PERIMETER FENCE</p> <p>MATERIAL: 2700 CHW FENCE</p> <p>2000 HIGH HEAVY DUTY 3.15mm GAUGE CHAIN WIRE MESH</p> <p>50 x 50 APERTURE</p> <p>3 No. x 100S BARBED WIRE ABOVE - DOUBLE STRANDS TWISTED IN 'LOW' PATTERN @ 200 CTRS</p> <p>FINISH: GAL MESH AND POSTS & UNPAINTED</p>

CAD REF: 25-February-2021
 PROPOSED BUNNINGS WAREHOUSE, LEPPINGTON, N.S.W. 1455 - PLOTTED

NO.	AMENDMENT	DATE	NO.	AMENDMENT	DATE
01	PRELIMINARY ISSUE	05.02.21			
02	CC ISSUE	25.02.21			

This drawing and the design shown herein is the property of John R Brogan & Associates Pty Ltd and shall not be copied or reproduced in part or in whole in any form without the written permission of John R Brogan & Associates Pty Ltd. Sydney and shall be used only for the project for which it was provided. Do not scale from this drawing. Verify dimensions from site and refer any discrepancies to Architects for clarification.

DESIGN & CONSTRUCT HEAD CONTRACTOR

MAINBRACE CONSTRUCTIONS MAINBRACE CONSTRUCTIONS PTY LTD
 4/170 PACIFIC HWY GREENWICH NSW 2065
 PRINCIPAL **BUNNINGS warehouse**

JOHN R. BROGAN & ASSOCIATES PTY. LIMITED
 ARCHITECTS, PLANNERS & COMMERCIAL INTERIOR DESIGNERS

37 PITT ST. SYDNEY NSW 2000
 PH: (02) 9 221 2833 FAX: (02) 9 251 4741
 EMAIL: jrb@brogans.com.au

A.B.N. 93 003 284 759

SCALE 1:200
 DATE AUG 20

PROP BUNNINGS WAREHOUSE LEPPINGTON
 LOT 3 DP TBC BRINGELLY RD BUSINESS HUB, SKYLINE DR
 HORNINGSEA PARK NSW 2171

ELEVATIONS - EAST & SOUTH

PROJ. NO. 1455
 DRG. NO. 131
 AMD NO. 1