

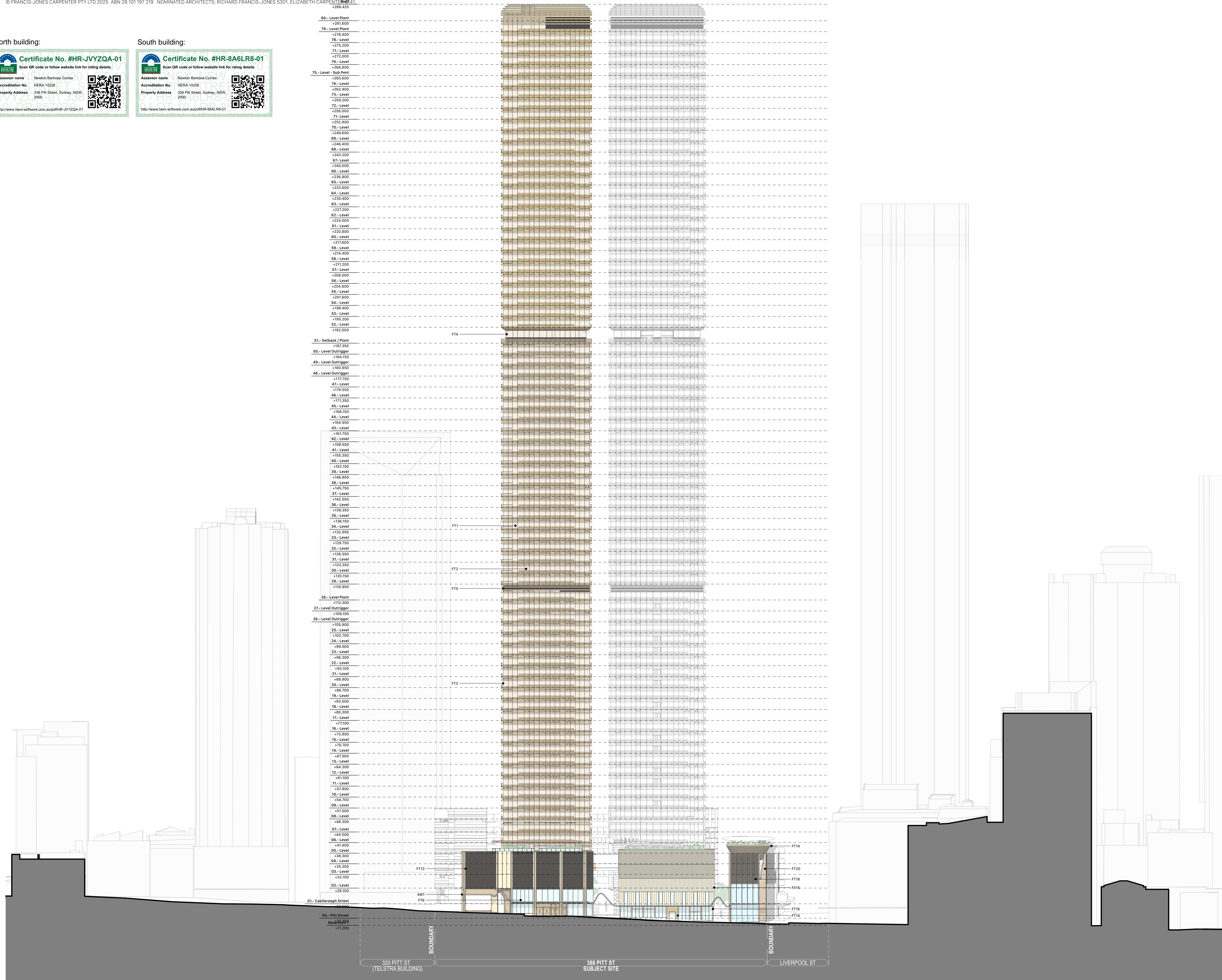
North building:



South building:



- 80.- Level Plant +281.600
- 79.- Level Plant +278.400
- 78.- Level +275.200
- 77.- Level +272.000
- 76.- Level +268.800
- 75.- Level - Sub Pent +265.600
- 74.- Level +262.400
- 73.- Level +259.200
- 72.- Level +256.000
- 71.- Level +252.800
- 70.- Level +249.600
- 69.- Level +246.400
- 68.- Level +243.200
- 67.- Level +240.000
- 66.- Level +236.800
- 65.- Level +233.600
- 64.- Level +230.400
- 63.- Level +227.200
- 62.- Level +224.000
- 61.- Level +220.800
- 60.- Level +217.600
- 59.- Level +214.400
- 58.- Level +211.200
- 57.- Level +208.000
- 56.- Level +204.800
- 55.- Level +201.600
- 54.- Level +198.400
- 53.- Level +195.200
- 52.- Level +192.000
- 51.- Setback / Plant +187.350
- 50.- Level Outrigger +184.150
- 49.- Level Outrigger +180.950
- 48.- Level Outrigger +177.750
- 47.- Level +174.550
- 46.- Level +171.350
- 45.- Level +168.150
- 44.- Level +164.950
- 43.- Level +161.750
- 42.- Level +158.550
- 41.- Level +155.350
- 40.- Level +152.150
- 39.- Level +148.950
- 38.- Level +145.750
- 37.- Level +142.550
- 36.- Level +139.350
- 35.- Level +136.150
- 34.- Level +132.950
- 33.- Level +129.750
- 32.- Level +126.550
- 31.- Level +123.350
- 30.- Level +120.150
- 29.- Level +116.950
- 28.- Level Plant +112.300
- 27.- Level Outrigger +109.100
- 26.- Level Outrigger +105.900
- 25.- Level +102.700
- 24.- Level +99.500
- 23.- Level +96.300
- 22.- Level +93.100
- 21.- Level +89.900
- 20.- Level +86.700
- 19.- Level +83.500
- 18.- Level +80.300
- 17.- Level +77.100
- 16.- Level +73.900
- 15.- Level +70.700
- 14.- Level +67.500
- 13.- Level +64.300
- 12.- Level +61.100
- 11.- Level +57.900
- 10.- Level +54.700
- 09.- Level +51.500
- 08.- Level +48.300
- 07.- Level +45.100
- 06.- Level +41.900
- 05.- Level +38.700
- 04.- Level +35.500
- 03.- Level +32.300
- 02.- Level +29.100
- 01.- Castlereagh Street +25.900
- 00.- Pitt Street Base/RRP +17.200



General notes

- All dimensions and existing conditions shall be checked and verified by the contractor before proceeding with the work.
- All levels relative to 'Australian Height Datum'.
- Do not scale drawings.
- Use figured dimensions only.

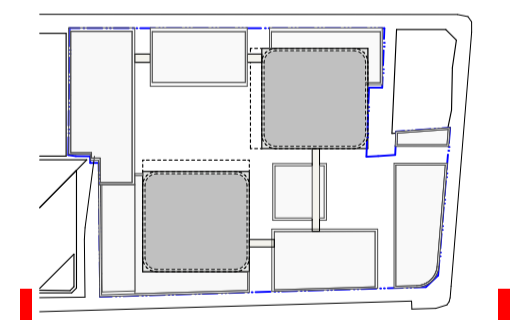
Tower Facade Types

- FT1 Residential** - Curtain Wall or Window Wall Low Sill aluminium profiled spandrel with bronze tinted double-glazed vision panel and aluminium sunshade, operable awning windows
- FT2 Residential** - Curtain Wall or Window Wall Elevated sill aluminium profiled spandrel with bronze tinted double-glazed vision panel and aluminium sunshade, operable awning windows
- FT3 Residential** - Curtain Wall or Window Wall Aluminium profiled spandrel with fixed bronze tinted double-glazed vision panel and aluminium sunshade at wind-affected balconies
- FT4 Residential** - Curtain Wall or Window Wall Full-height bronze tinted double glazed vision panel
- FT5 Plant** - Curtain Wall or Window Wall Aluminium profiled spandrel with extruded aluminium louvres

Podium Facade Types

- FT6 Retail** - Full-height shopfront glazing
- FT7 Sandstone** cladding
- FT8 Hotel** - Projected metal frames with fixed bronze tinted glazing
- FT9 Hotel** - High Performance, unitised aluminium windows, with intermittent GRC and sandstone cladding
- FT10 Panelised** GRC cladding system
- FT11 Precast** cladding with integrated stone interlay
- FT12 Glazing** with integrated woven mesh
- FT13 Metal** cylinders with intermittent sandstone caps
- FT14 Sandstone** cladding
- FT15 TRIAS** - Perforated metal screen
- FT16 TRIAS** - Coloured concrete
- FT17 ASA+PHD** - Expressed header masonry coupling
- FT18 ASA+PHD** - Honed sandstone
- FT19 ASA+PHD** - Stone cladding
- LV1 Aluminium** Louvre
- AT1 GRC** and Aluminium cladding street awning
- BT1 Glass** Balustrade

Key Plan



DA 01	13/02/2025	For Modification Approval	ELM
01	25/05/2025	Draft Modification	IB

Rev	Date	Description	By	Chk
-----	------	-------------	----	-----

338 Pitt Street
Australia
338 Pitt Street
Sydney New South Wales 2000

1:500 Elevations **Scale**
West Elevation - Pitt Street 1:500 @ A1

Project Code **First Issued**
B338 25/5/2025

Sheet No. **Rev**
3002 DA 01