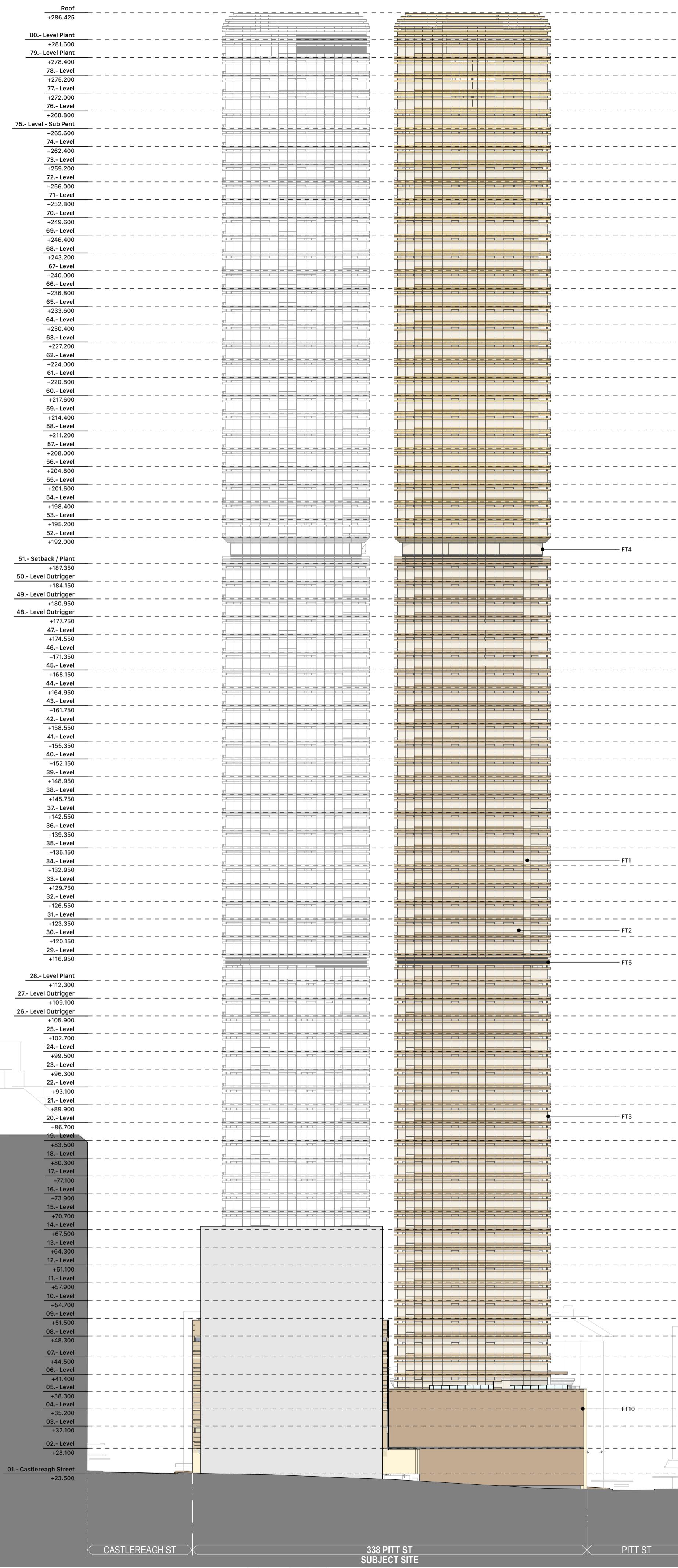


North building:

South building:

**Certificate No. #HR-JVYZQA-01**  
 Scan QR code or follow website link for rating details.  
 Assessor name: Newton Barbosa Correa  
 Accreditation No.: HERA 10228  
 Property Address: 338 Pitt Street, Sydney, NSW, 2000  
 http://www.hero-software.com.au/pdf/HR-JVYZQA-01

**Certificate No. #HR-8A6LR8-01**  
 Scan QR code or follow website link for rating details.  
 Assessor name: Newton Barbosa Correa  
 Accreditation No.: HERA 10228  
 Property Address: 338 Pitt Street, Sydney, NSW, 2000  
 http://www.hero-software.com.au/pdf/HR-8A6LR8-01



**General notes**

- All dimensions and existing conditions shall be checked and verified by the contractor before proceeding with the work.
- All levels relative to 'Australian Height Datum'.
- Do not scale drawings.
- Use figured dimensions only.

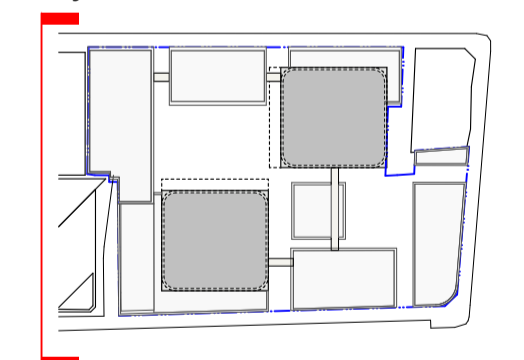
**Tower Facade Types**

- FT1 Residential - Curtain Wall or Window Wall** Low Sill aluminium profiled spandrel with bronze tinted double-glazed vision panel and aluminium sunshade, operable awning windows
- FT2 Residential - Curtain Wall or Window Wall** Elevated sill aluminium profiled spandrel with bronze tinted double-glazed vision panel and aluminium sunshade, operable awning windows
- FT3 Residential - Curtain Wall or Window Wall** Aluminium profiled spandrel with fixed bronze tinted double-glazed vision panel and aluminium sunshade at wind-affected balconies
- FT4 Residential - Curtain Wall or Window Wall** Full-height bronze tinted double glazed vision panel
- FT5 Plant - Curtain Wall or Window Wall** Aluminium profiled spandrel with extruded aluminium louvres

**Podium Facade Types**

- FT6 Retail - Full-height** shopfront glazing
- FT7 Sandstone** cladding
- FT8 Hotel - Projected** metal frames with fixed bronze tinted glazing
- FT9 Hotel - High Performance,** utilised aluminium windows, with intermittent GRC and sandstone cladding
- FT10 Panelised** GRC cladding system
- FT11 Precast** cladding with integrated stone interlay
- FT12 Glazing** with integrated woven mesh
- FT13 Metal** cylinders with intermittent sandstone caps
- FT14 Sandstone** cladding
- FT15 TRIAS -** Perforated metal screen
- FT16 TRIAS -** Coloured concrete
- FT17 ASA+PHD -** Expressed header masonry coupling
- FT18 ASA+PHD -** Honed sandstone
- FT19 ASA+PHD -** Stone cladding
- LV1 Aluminium** Louvre
- AT1 GRC and Aluminium** cladding street awning
- BT1 Glass** Balustrade

**Key Plan**



DA 01	13/6/2025	For Modification	ELM
		Approval	
01	25/5/2025	Draft Modification	IB

Rev	Date	Description	By	Chk
-----	------	-------------	----	-----

**338 Pitt Street**  
 Australia  
 338 Pitt Street  
 Sydney New South Wales 2000

**1:500 Elevations** **Scale**  
 North Elevation 1:500 @ A1

**Project Code** **First Issued**  
 B338 25/5/2025

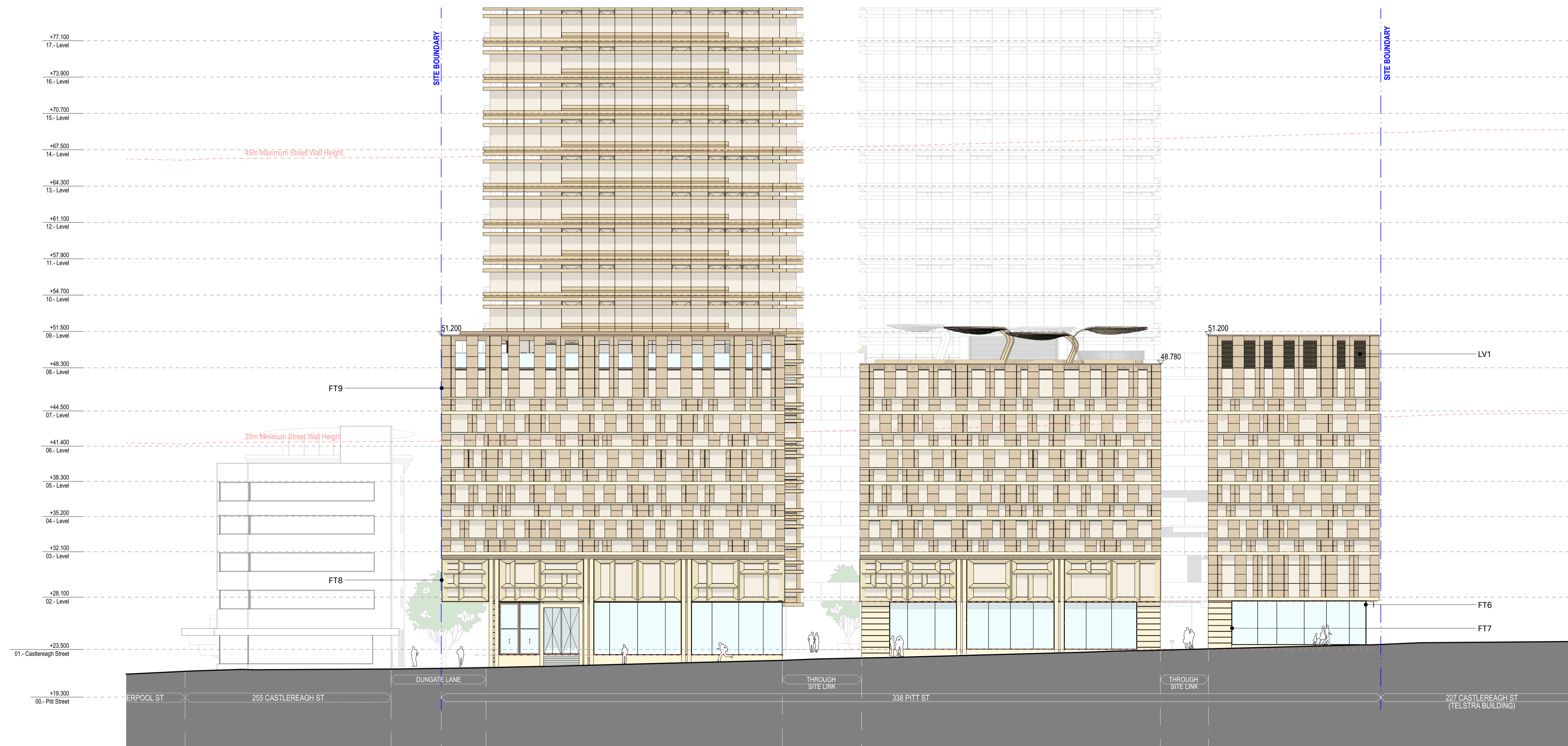
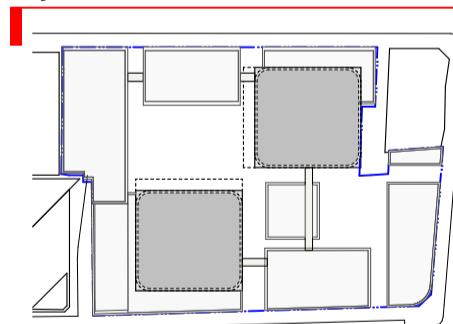
**Sheet No.** **Rev**  
 3003 DA 01

- General notes**
- All dimensions and existing conditions shall be checked and verified by the contractor before proceeding with the work.
  - All levels relative to 'Australian Height Datum'.
  - Do not scale drawings.
  - Use figured dimensions only.

**Legend**

- aluminium profiled spandrel with bronze tinted double-glazed vision panel and aluminium sunshade, operable awning windows
  - FT2 Residential** - Curtain Wall or Window Wall Elevated sill aluminium profiled spandrel with bronze tinted double-glazed vision panel and aluminium sunshade, operable awning windows
  - FT3 Residential** - Curtain Wall or Window Wall Aluminium profiled spandrel with fixed bronze tinted double-glazed vision panel and aluminium sunshade at wind-affected balconies
  - FT4 Residential** - Curtain Wall or Window Wall Full-height bronze tinted double glazed vision panel
  - FT5 Plant** - Curtain Wall or Window Wall Aluminium profiled spandrel with extruded aluminium louvres
- Podium Facade Types**
- FT6 Retail** - Full-height shopfront glazing
  - FT7 Sandstone cladding**
  - FT8 Hotel** - Projected metal frames with fixed bronze tinted glazing
  - FT9 Hotel** - High Performance, unitised aluminium windows, with intermittent GRC and sandstone cladding
  - FT10** Precast cladding with integrated stone interlay
  - FT11** Glazing with integrated woven mesh
  - FT12** Metal cylinders with intermittent sandstone caps
  - FT13** Sandstone cladding
  - FT14** Sandstone cladding
  - FT15 TRIAS** - Perforated metal screen
  - FT16 TRIAS** - Coloured concrete
  - FT17 ASA+PHD** - Expressed header masonry coupling
  - FT18 ASA+PHD** - Honed sandstone
  - FT19 ASA+PHD** - Stone cladding
  - LV1** Aluminium Louvre
  - AT1** GRC and Aluminium cladding street awning
  - BT1** Glass Balustrade

**Key Plan**



Rev	Date	Description	By	Chk
DA 01	13/6/2025	For Modification Approval	ELM	
01	25/5/2025	Draft Modification	IB	

Rev	Date	Description	By	Chk

**338 Pitt Street**  
Australia  
338 Pitt Street  
Sydney New South Wales 2000

**1:200 Elevations** Scale  
East Podium Elevation - Castlereagh 1:200 @ A1 Street

**Project Code** B338  
**First Issued** 25/5/2025

**Sheet No.** 3100  
**Rev** DA 01

North building:

**Certificate No. #HR-JVYZQA-01**  
Scan QR code or follow website link for rating details.

Assessor name: Newton Barbosa Correa  
Accreditation No.: HERA 10228  
Property Address: 338 Pitt Street, Sydney, NSW, 2000

<http://www.hep-software.com.au/pdf/HR-JVYZQA-01>

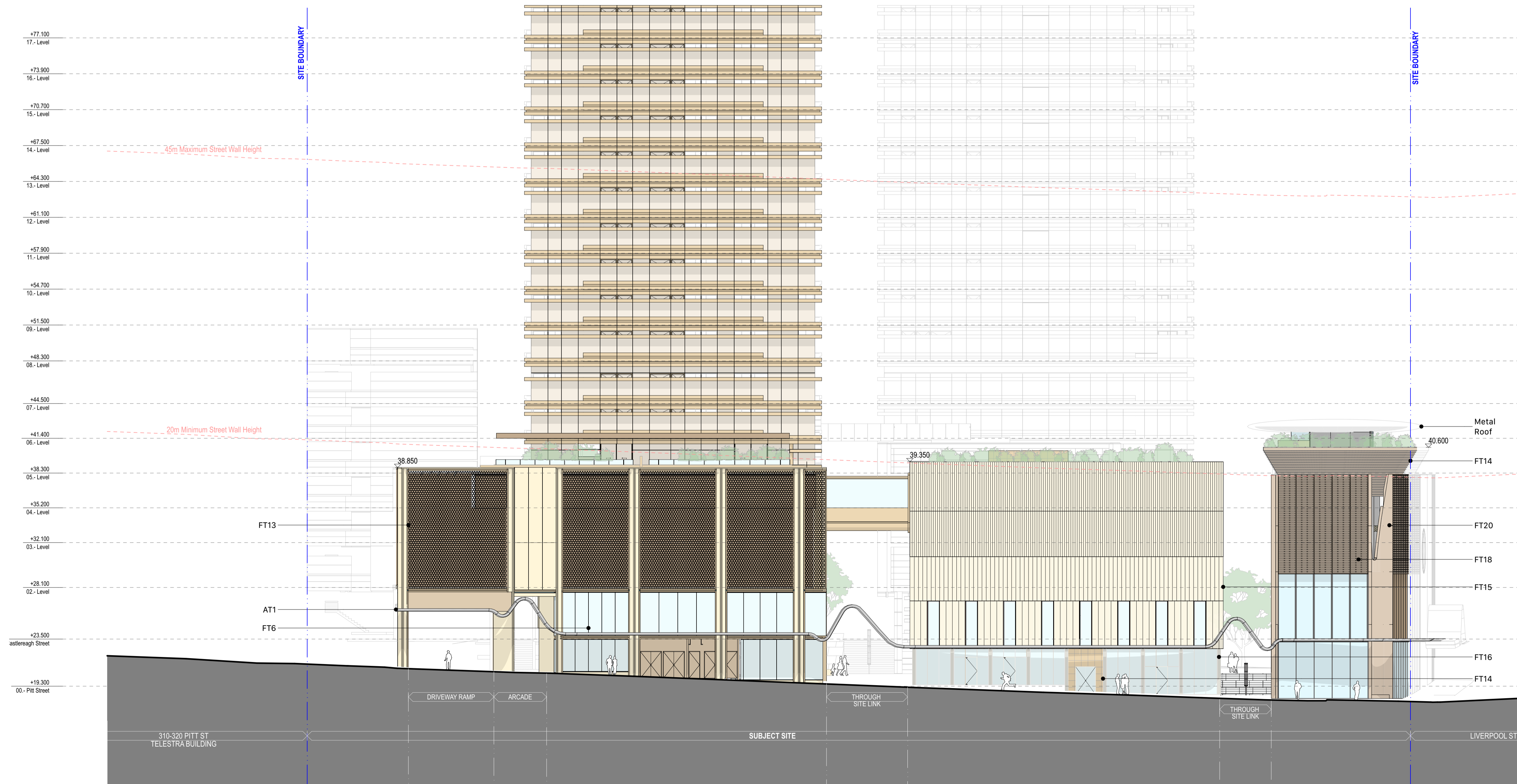
South building:

**Certificate No. #HR-8A6LR8-01**  
Scan QR code or follow website link for rating details.

Assessor name: Newton Barbosa Correa  
Accreditation No.: HERA 10228  
Property Address: 338 Pitt Street, Sydney, NSW, 2000

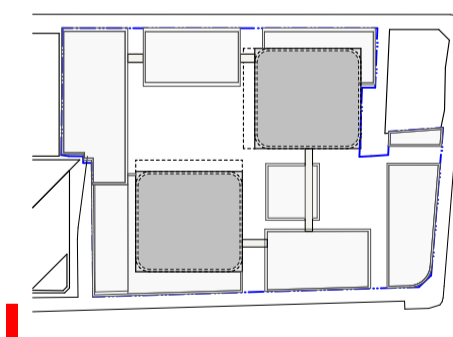
<http://www.hep-software.com.au/pdf/HR-8A6LR8-01>

- General notes**
- All dimensions and existing conditions shall be checked and verified by the contractor before proceeding with the work.
  - All levels relative to 'Australian Height Datum'.
  - Do not scale drawings.
  - Use figured dimensions only.



- FT1 Residential - Curtain Wall or Window Wall Aluminium profiled spandrel with bronze tinted double-glazed vision panel and aluminium sunshade, operable awning windows
  - FT2 Residential - Curtain Wall or Window Wall Elevated sill aluminium profiled spandrel with bronze tinted double-glazed vision panel and aluminium sunshade, operable awning windows
  - FT3 Residential - Curtain Wall or Window Wall Aluminium profiled spandrel with fixed bronze tinted double-glazed vision panel and aluminium sunshade at wind-affected balconies
  - FT4 Residential - Curtain Wall or Window Wall Full-height bronze tinted double glazed vision panel
  - FT5 Plant - Curtain Wall or Window Wall Aluminium profiled spandrel with extruded aluminium louvres
- Podium Facade Types**
- FT6 Retail - Full-height shopfront glazing
  - FT7 Sandstone cladding
  - FT8 Hotel - Projected metal frames with fixed bronze tinted glazing
  - FT9 Hotel - High Performance, unitised aluminium windows, with intermittent GRC and sandstone cladding
  - FT10 Panelised GRC cladding system
  - FT11 Precast cladding with integrated stone interlay
  - FT12 Glazing with integrated woven mesh
  - FT13 Metal cylinders with intermittent sandstone caps
  - FT14 Sandstone cladding
  - FT15 TRIAS - Perforated metal screen
  - FT16 TRIAS - Coloured concrete
  - FT17 ASA+PHD - Exposed header masonry coursing
  - FT18 ASA+PHD - Honed sandstone
  - FT19 ASA+PHD - Stone cladding
  - LV1 Aluminium Louvre
  - AT1 GRC and Aluminium cladding street awning
  - BT1 Glass Balustrade

**Key Plan**



Rev	Date	Description	By	Chk
DA 01	13/6/2025	For Modification Approval	ELM	
01	25/5/2025	Draft Modification	IB	

**338 Pitt Street**  
Australia  
338 Pitt Street  
Sydney New South Wales 2000

**1:200 Elevations** Scale  
West Podium Elevation - Pitt Street 1:200 @ A1

**Project Code** B338  
**First Issued** 25/5/2025

**Sheet No.** 3101  
**Rev** DA 01

North building:

**Certificate No. #HR-JVYZQA-01**  
Scan QR code or follow website link for rating details.

Assessor name: Newton Barbosa Correa  
Accreditation No.: HERA 10228  
Property Address: 338 Pitt Street, Sydney, NSW, 2000  
http://www.hero-software.com.au/pdf/HR-JVYZQA-01

South building:

**Certificate No. #HR-8A6LR8-01**  
Scan QR code or follow website link for rating details.

Assessor name: Newton Barbosa Correa  
Accreditation No.: HERA 10228  
Property Address: 338 Pitt Street, Sydney, NSW, 2000  
http://www.hero-software.com.au/pdf/HR-8A6LR8-01