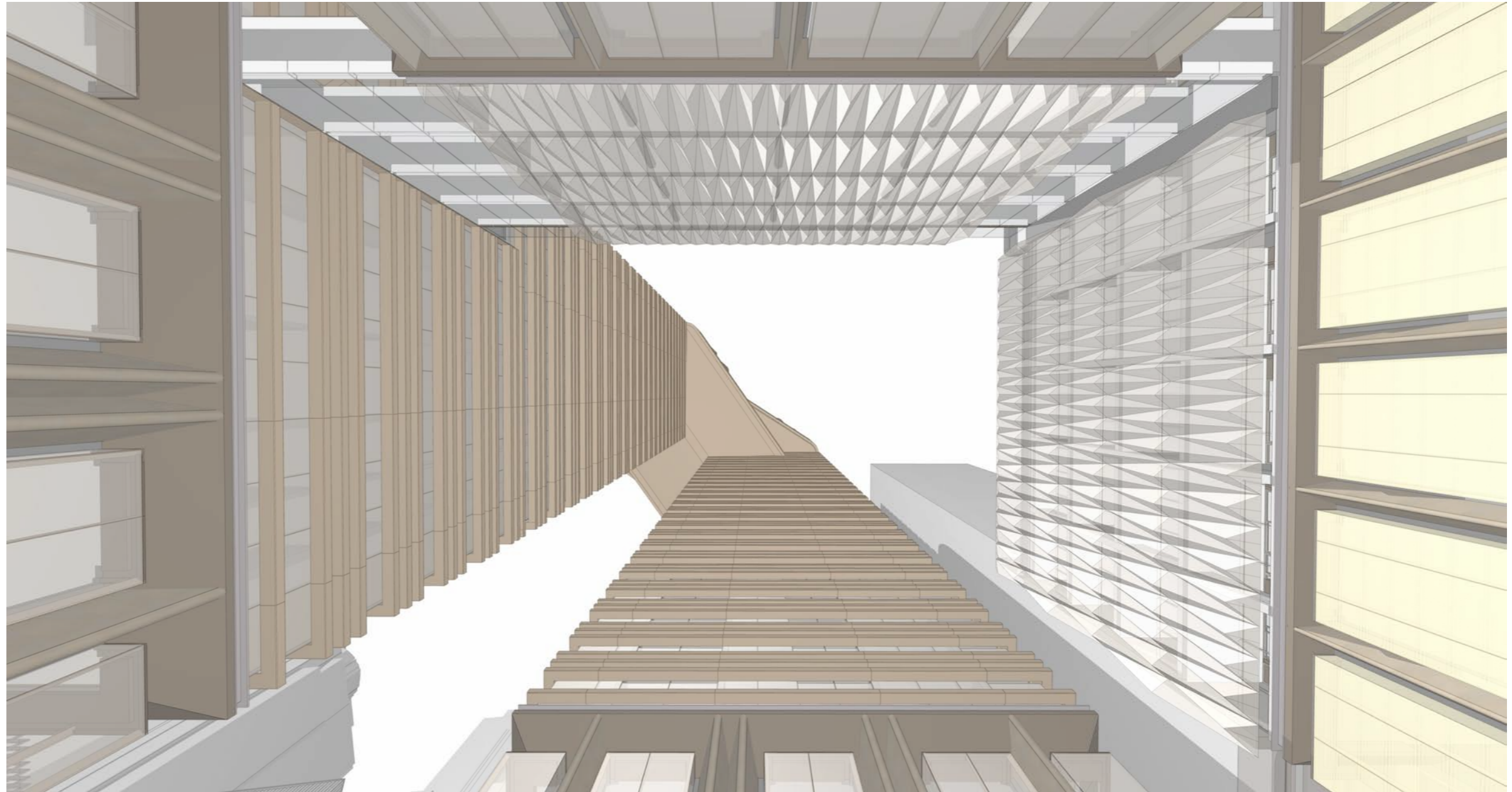
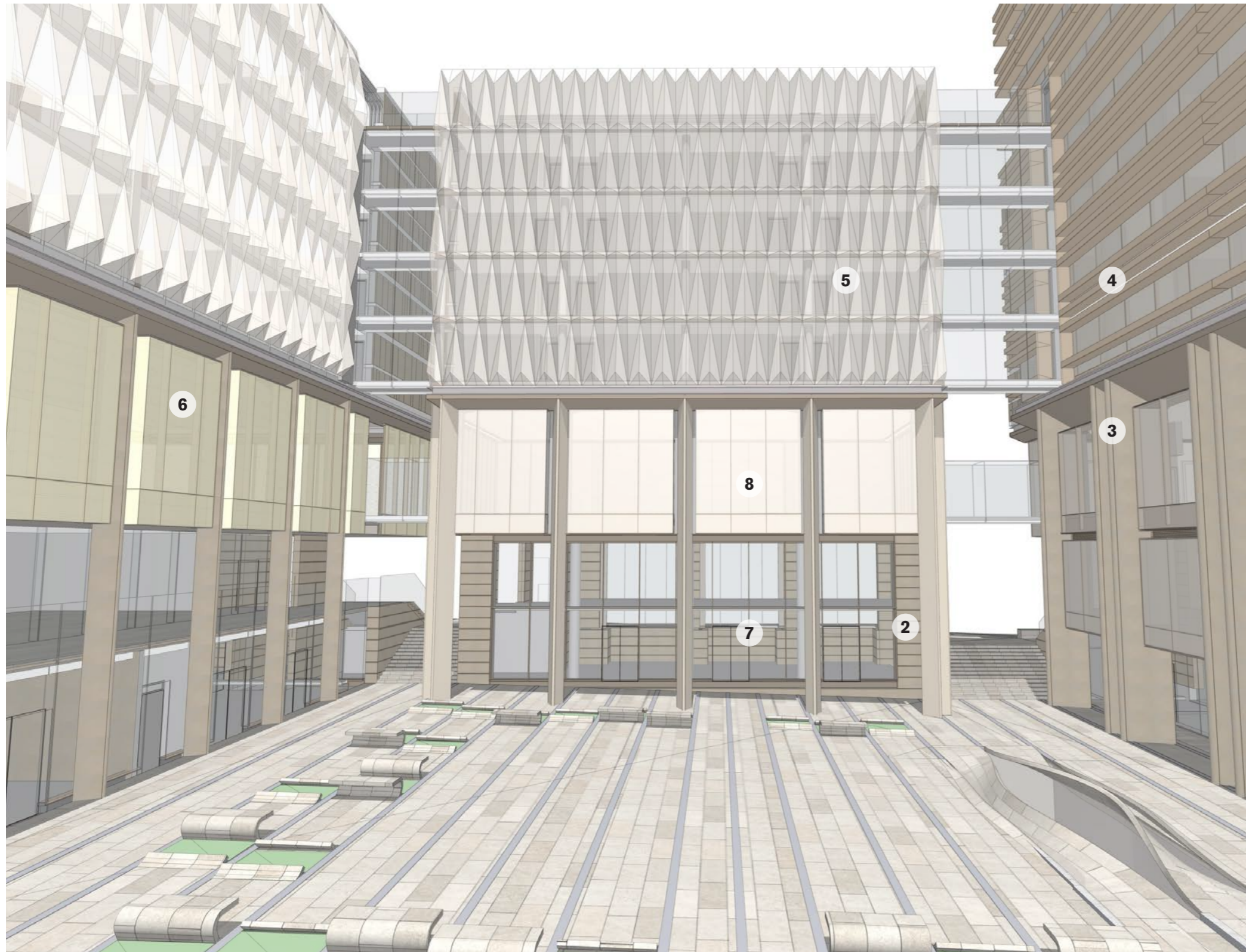


6.6 Urban Courtyard Facades

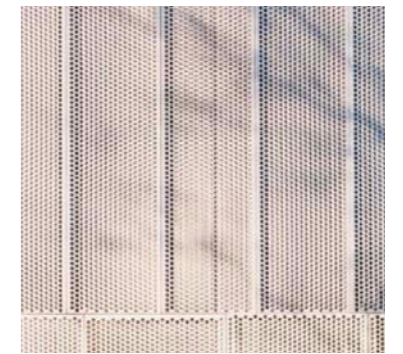
City courtyards offer human scaled settings away from the intense activity of the street. In New York, a number of highly popular, well designed courtyards of similar space to the proposed space offer seating, dining and cafe settings with ordered landscape and opportunity for public art and water features. The dimensions of the courtyard including colonnades are 30x35m offering proportions which are almost twice the width of Paley and Greenacre pocket parks and reaching towards the dimensions of the famous and much loved MoMA courtyard which offers a venue for temporary and permanent sculpture as well as water features and significant tree planting. Two sides of the court will be activated with outdoor dining while a third face will provide a venue for water feature combined with public art. Further shady settings for table and chairs will be interspersed under the grid of rainforest trees which can be further enhanced through misting in summer. The fourth face will offer an intimate address for the hotel with potential for cafe and bar.







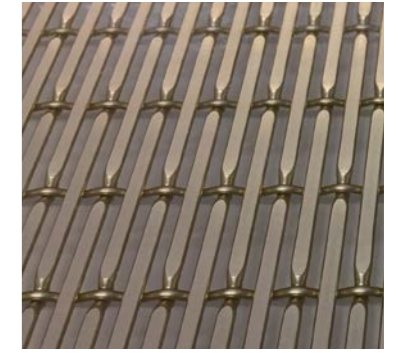
2 Sandstone



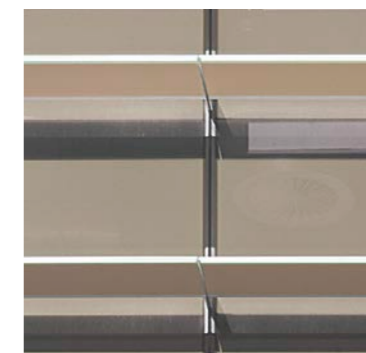
5 Perforated Bronze Mesh



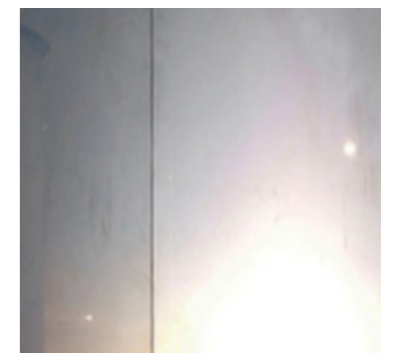
3 GRC (Sanstone)



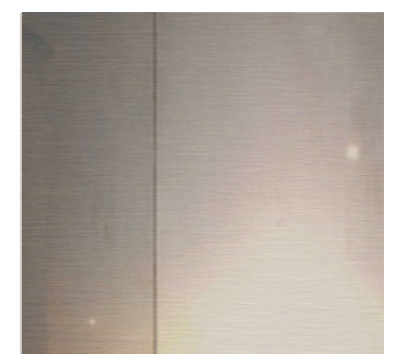
6 Bronze metallic mesh in DGU



4 Bronze Aluminium Sunshading



7 Clear glazing



8 Lightly tinted bronze glazing





6.7 Hotel

The hotel has a special, boutique character which draws from a unique opportunity to locate guest rooms and facilities across a series of podium buildings with distinct yet aligned architectural characters, together with a spectacular tower component.

The hotel provides 158 guest rooms. Podium levels accommodate 21 guest rooms per level within 3 adjoined, boutique wings each with a unique expression and style. The 3 wings are linked by light filled bridges with views for guests to the public space below.

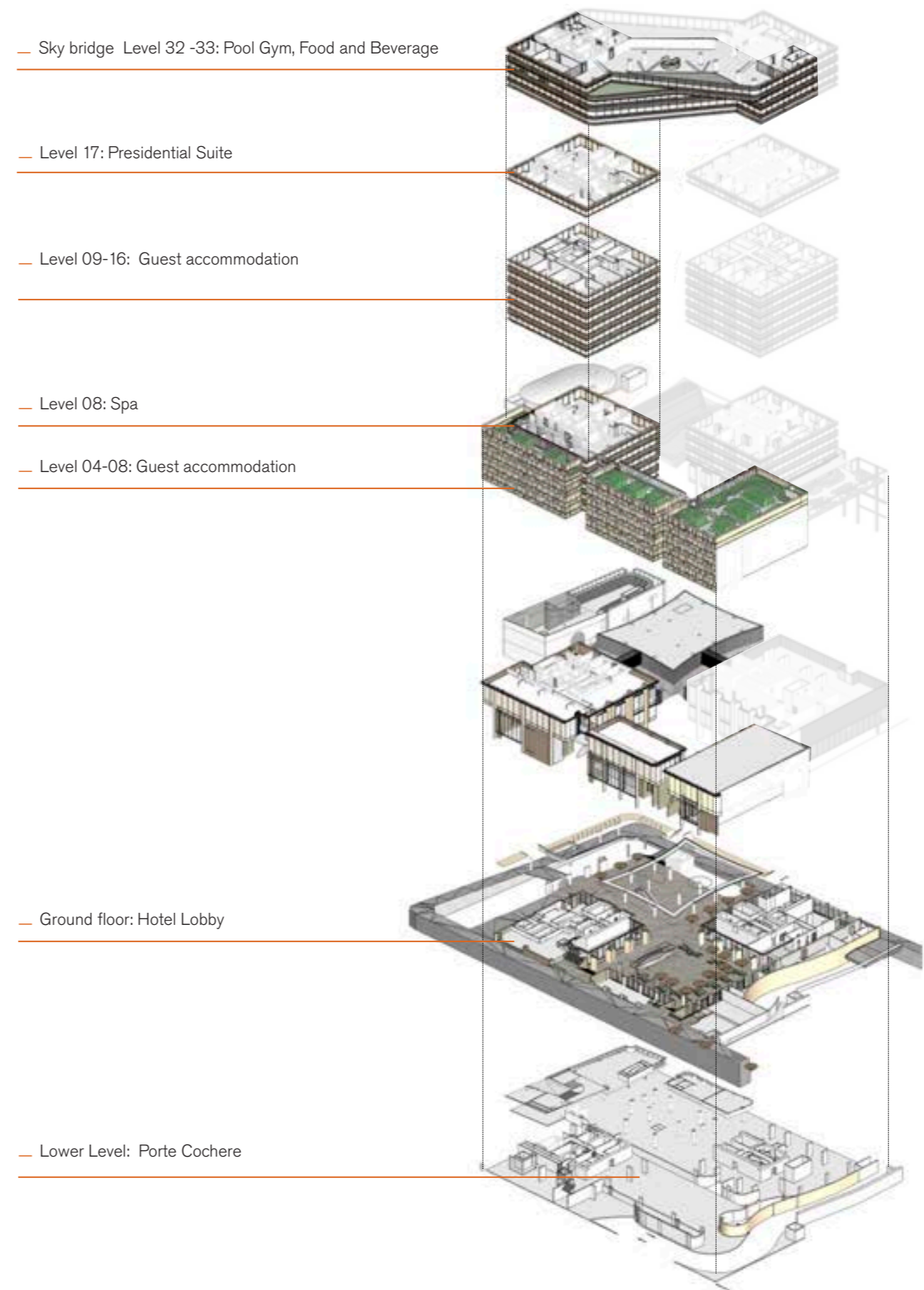
Guest accommodation is also provided across levels 8-17 of the South East tower. Each tower level accommodates 8 guest rooms per level with the exception of level 17, where the presidential suite crowning over Castlereagh street is located.

The porte-cochere is located on lower ground. This key arrival space is naturally illuminated and ventilated from above. On arrival within the beautifully, crafted porte-cochere guests are afforded framed views towards the towers above and sky beyond. The main pedestrian entry to the hotel is off Castlereagh Street via the highly activated public square. The double height hotel foyer has a major presence on the public square and accommodates a bar and cafe activating the southern face of the urban courtyard garden.

A secondary pedestrian entry is provide from Pitt Street via a laneway.

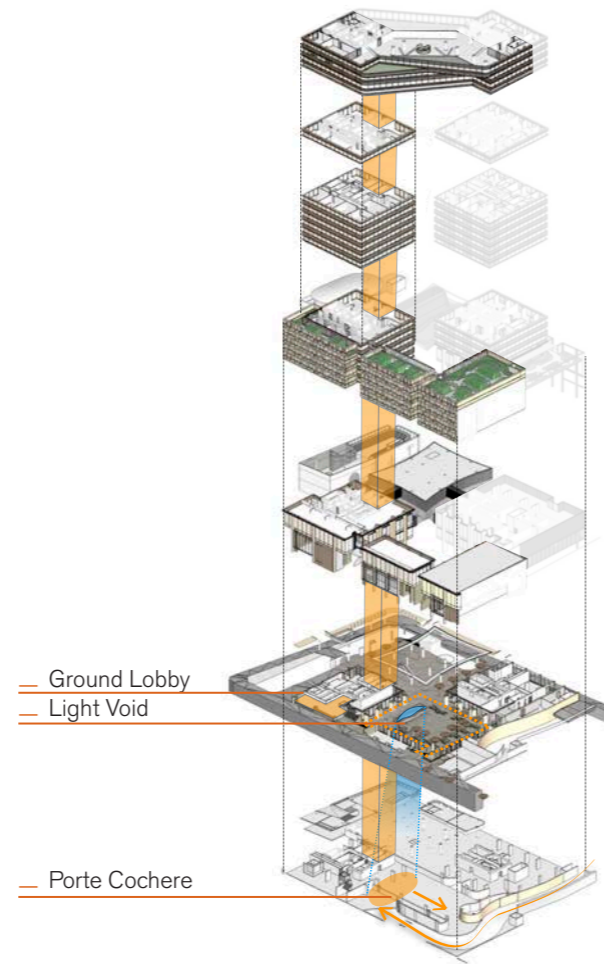
All hotel guests have access to the Level 32 / 34 'Sky Terrace' facilities. Level 32 accommodates the lounge bar and restaurant which are afforded spectacular views to the north east towards the harbour. Level 34 accommodates the Gym, Pool and Spa. These facilities position the hotel in a unique category with world's best facilities.

Hotel guest have easy access to the level 8 Spa located with the south east tower.

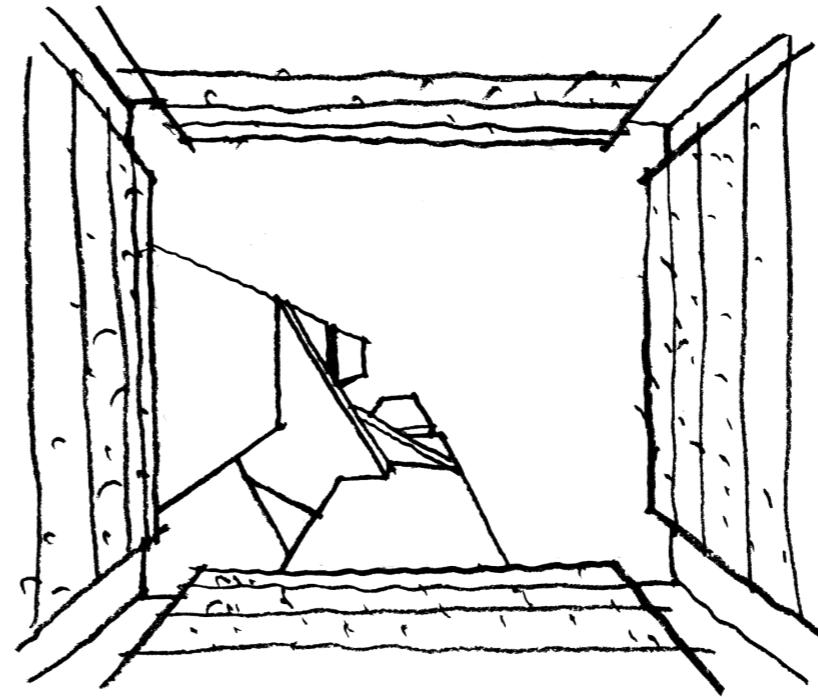


6.7.1 Drop Off and Arrival

Vehicular arrival is by the porte cochere located on lower ground. An art installation through the palaza brings natural light, air and a framed view of the towers over right down into the vehicle drop off area, opening up the view to the towers and creating a unique arrival experience for guests.

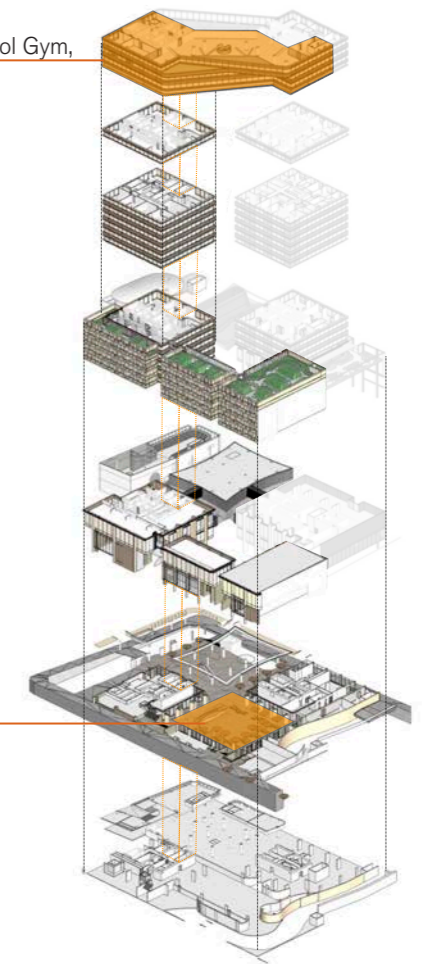


6.7.3 Hotel Amenities



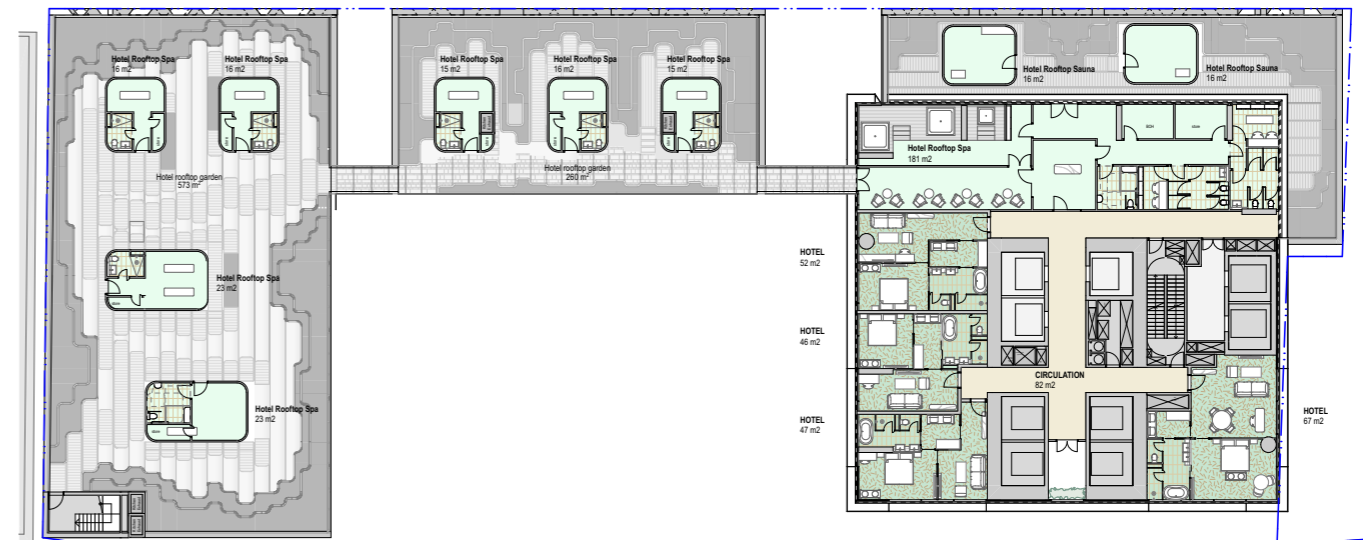
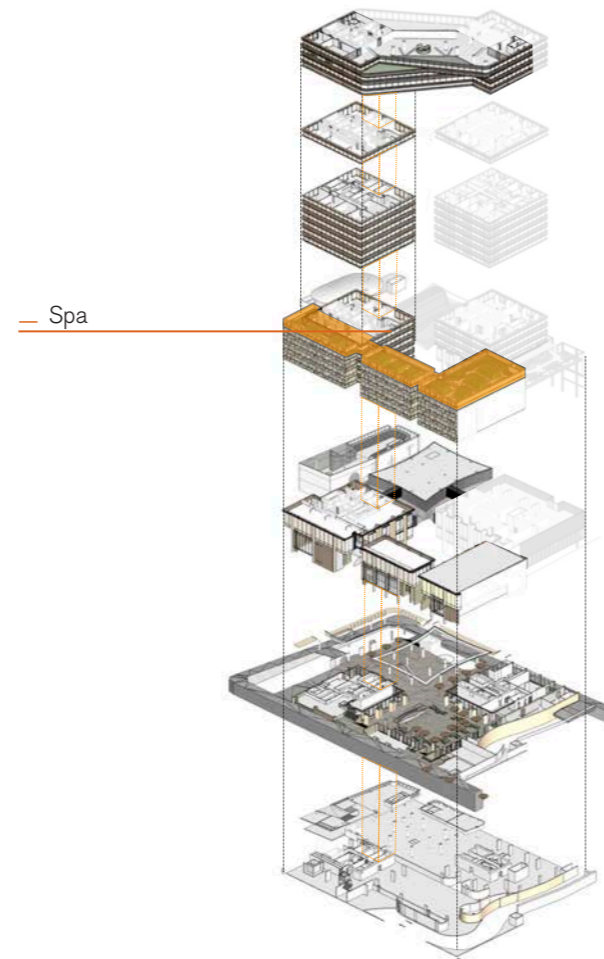
— Sky Bridge Level 32 -33: Pool Gym, Food and Beverage

— Plaza



6.7.2 Spa

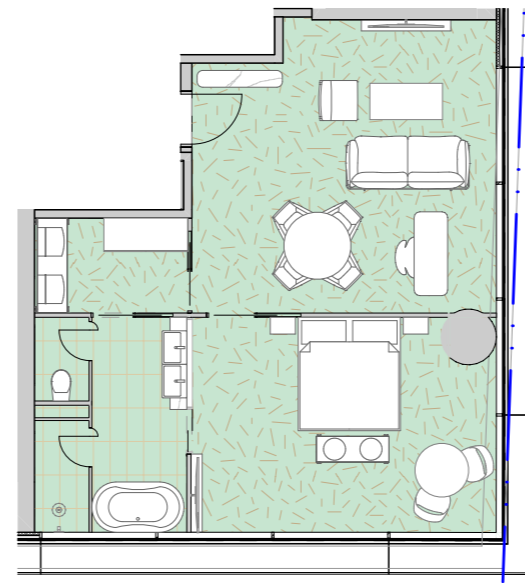
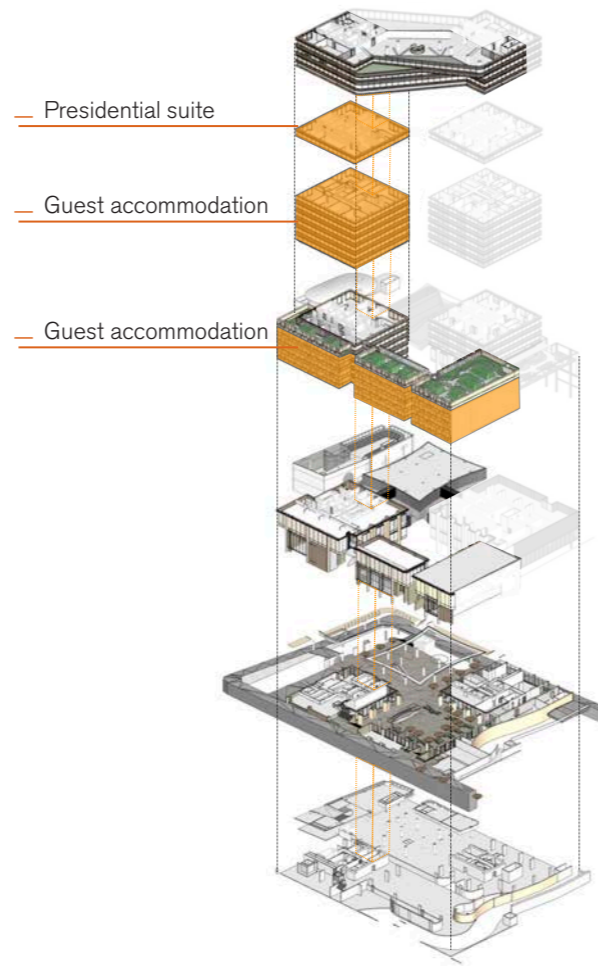
The Spa is located on Levels 8 of the southeast tower stretching over the rooftop terrace circling the plaza. Access to the reception is via the hotel lift core, where as the treatments will take place in rooftop pavilions located on teh landscaped tarrace. Wet areas such as hot tub and suanas are located on teh south west end.



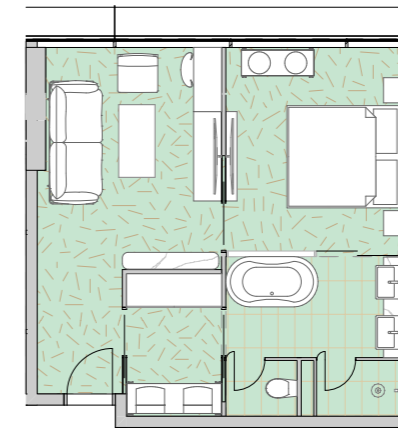
— Spa plan

6.7.4 Guest Accommodation

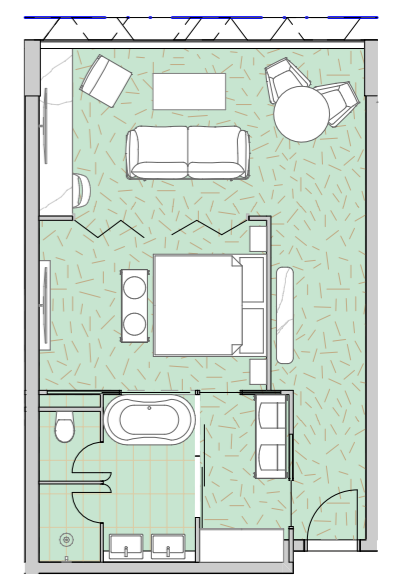
The hotel provides 158 guest rooms. 3 typical guest rooms have been developed. Typ A and B measures up to 50 m² and are equipped with a king bed, whereas type C will enclose up to 60 m² and house 2 queen beds. Additionally, the hotel will offer 10% of the rooms premium suits and a presidential suite. Podium levels accommodate 21 guest rooms per level within 3 adjoining, boutique wings each with a unique expression and style. The 3 wings are linked by light filled bridges with views for guests to the public space below.



— Hotel room Suite

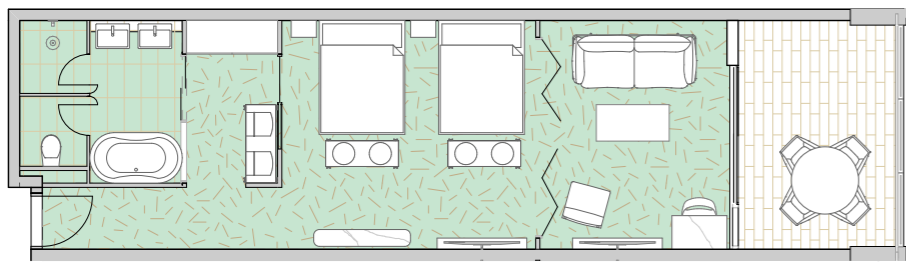


— Hotel room Type A

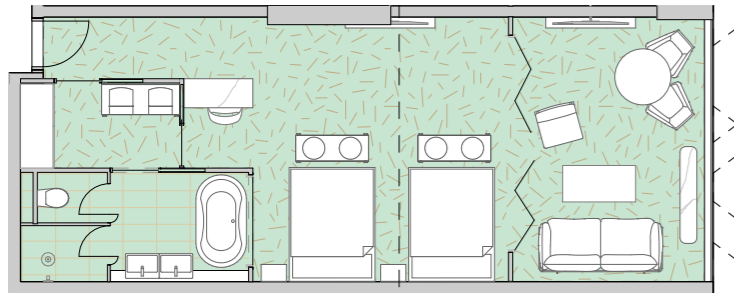


— Hotel room Type B

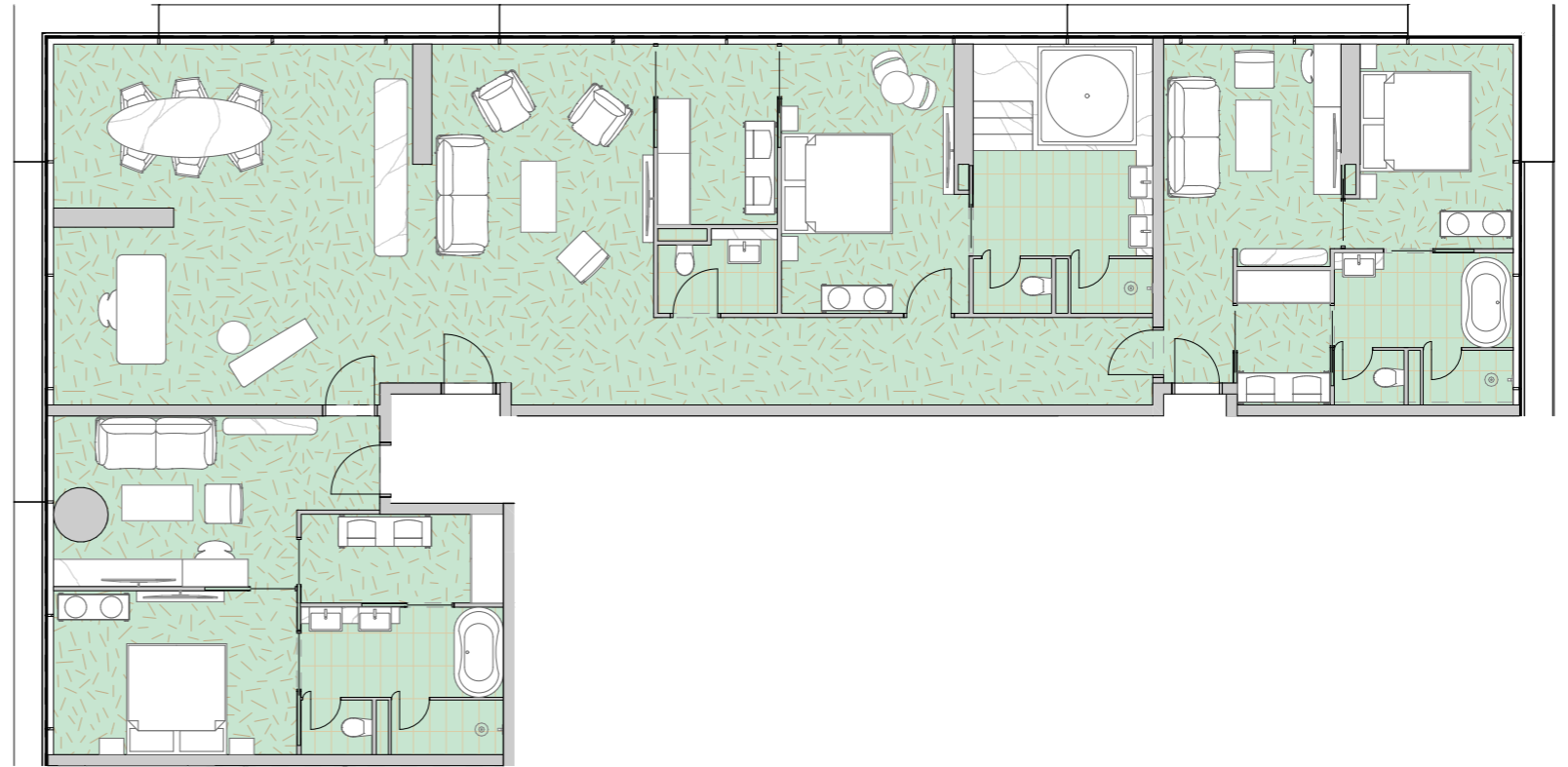




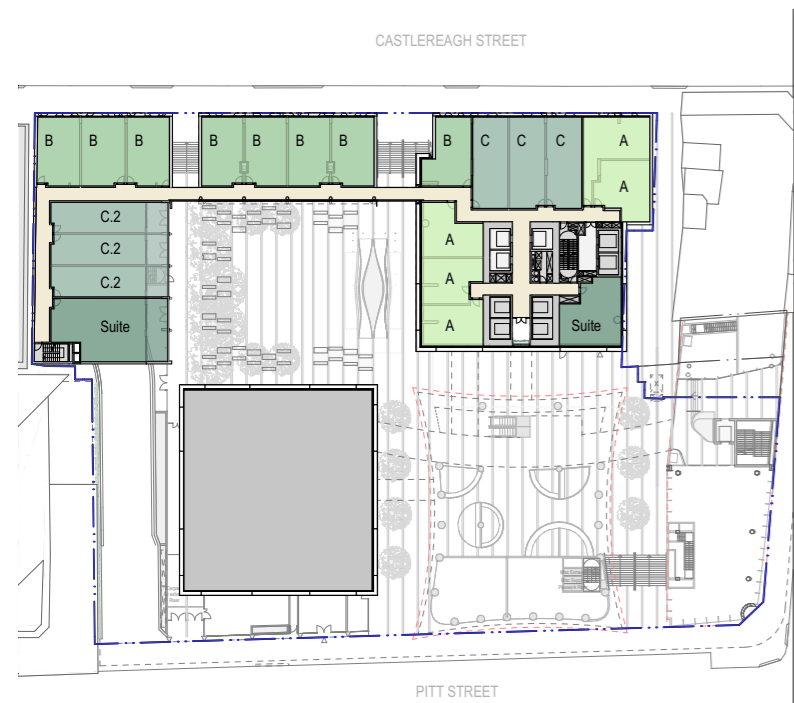
— Hotel room Type C.2



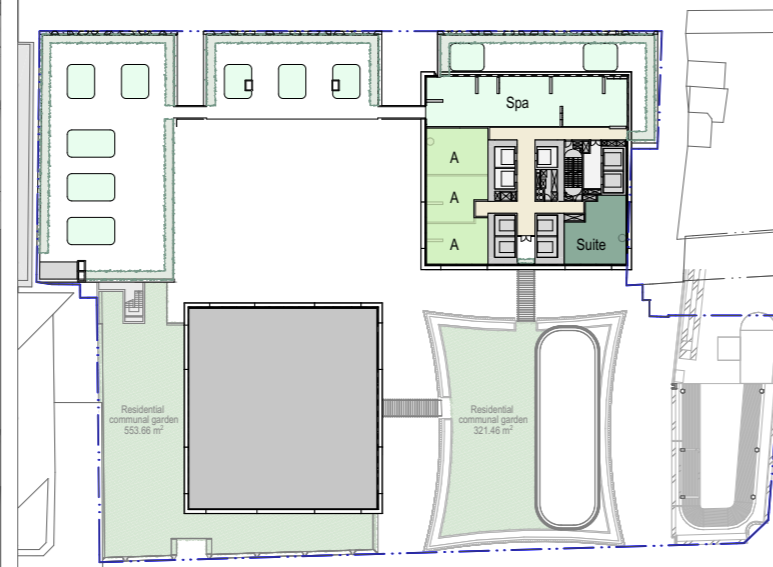
— Hotel room Type C



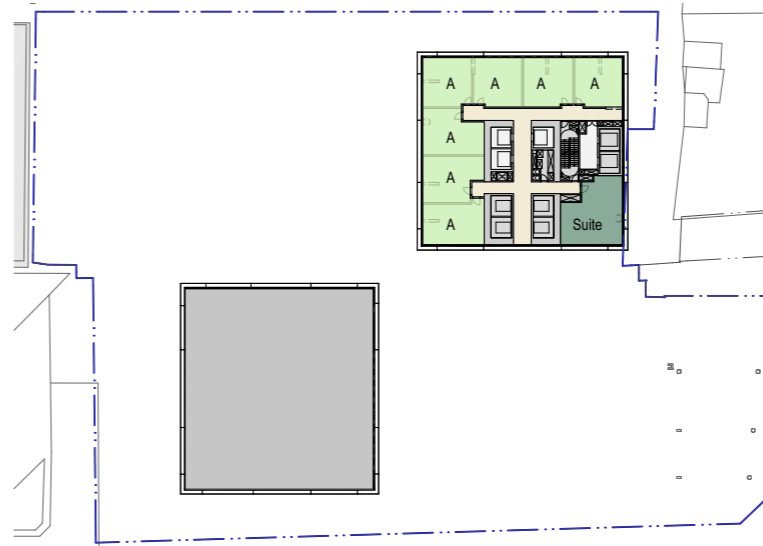
— Hotel room Presidential Suite



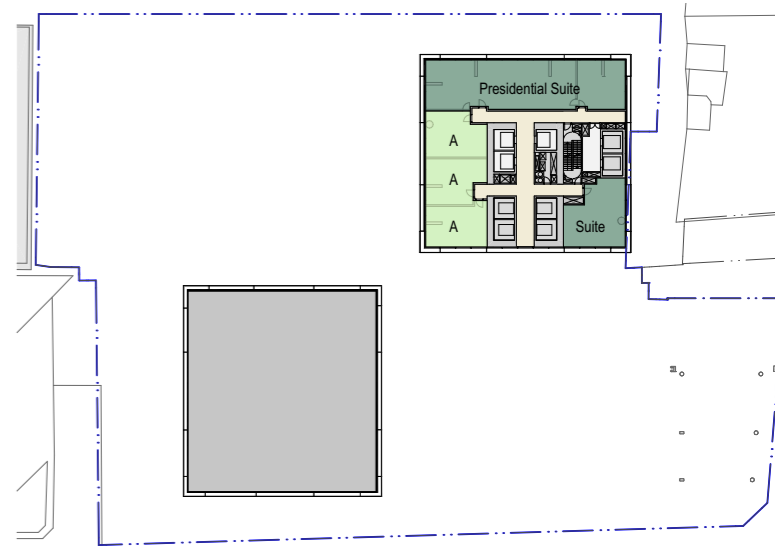
— Hotel Podium Level 4-7



— Hotel Podium Level 8



— Hotel Tower Level 9-16



— Hotel Tower Level 17