

The Children's Hospital at Westmead

Paediatric Services Building SSD Proposal

SEPP 33 Requirements

REP/001

Issue | 19 January 2021

This report takes into account the particular instructions and requirements of our client.

It is not intended for and should not be relied upon by any third party and no responsibility is undertaken to any third party.

Job number 271985-92

Arup Australia Pty Ltd ABN 76 625 912 665

Arup
Sky Park
One Melbourne Quarter
699 Collins Street
Docklands Vic 3008
Australia
www.arup.com

ARUP

Document verification

ARUP

Job title		Paediatric Services Building SSD Proposal		Job number 271985-92	
Document title		SEPP 33 Requirements		File reference	
Document ref		REP/001			
Revision	Date	Filename	20201215 Westmead SEPP33 draft 1.docx		
Draft 1	15 Dec. 20	Description	First draft		
			Prepared by	Checked by	Approved by
		Name	Jas Calder	Nigel Cann	Nigel Cann
		Signature			
Issue	19 Jan. 21	Filename	20210119 Westmead SEPP33 Issue.docx		
		Description	Address client comments		
			Prepared by	Checked by	Approved by
		Name	Jas Calder	Nigel Cann	Nigel Cann
		Signature			
		Filename			
		Description			
			Prepared by	Checked by	Approved by
		Name			
		Signature			
		Filename			
		Description			
			Prepared by	Checked by	Approved by
		Name			
		Signature			
Issue Document verification with document <input checked="" type="checkbox"/>					

Contents

	Page
1 Introduction	1
1.1 Proposed Development	1
2 Dangerous Goods Quantity	2
3 SEPP 33 Planning Requirements	3
3.1 Definitions	4
3.2 SEPP 33 Process	5
3.3 Risk Screening	6
3.4 Applicability	7
4 Conclusion	8

Appendix A

Dangerous Goods Manifest

Appendix B

SEARs

Executive Summary

State Environmental Planning Policy No. 33 Hazardous and Offensive Development (SEPP 33) is used in New South Wales to regulate the planning approval process for developments in hazardous and offensive industries, and potentially hazardous and potentially offensive industries.

This report follows the *Applying SEPP 33* guidance document to define the thresholds for storage quantities of dangerous goods for the Children's Hospital at Westmead.

This assessment concluded that dangerous goods of Class 2.2 subsidiary risk 5.1 i.e. refrigerated liquid oxygen vessels, medical oxygen cylinders and medical nitrous oxide, exceed the screening threshold of SEPP 33. The Site should be considered **potentially hazardous** and therefore a preliminary hazard assessment (PHA) is required. The PHA should be prepared in accordance with Hazardous Industry Planning Advisory Paper No. 6 — Hazard Analysis.

1 Introduction

This report follows the prescriptive SEPP 33 process outlined in the NSW Department of Planning, Industry and Environment's (DPIE's) guidance document *Applying SEPP 33* (2011), specifically the flowchart presented in Figure 1 of *Applying SEPP 33*. This process defines thresholds for storage quantities of dangerous goods and transport frequencies.

Item 21 of the SEARS (see Appendix B) specifies that SEPP 33 assessment is required and should the development be deemed "potentially hazardous", a Preliminary Hazard Analysis (PHA) must be prepared in accordance the *Applying SEPP33* guideline, the Hazardous Industry Planning Advisory Paper No. 6 'Hazard Analysis' (DoP, 2011) and Multi-Level Risk Assessment (DoP, 2011).

1.1 Proposed Development

The proposal seeks consent for the construction of a new **Paediatric Services Building (PSB)** to be located adjacent to the CASB, and on the site of the decommissioned P17 car park, including development of the Hawkesbury Road forecourt and access links. This includes works associated with CHW forecourt on Hawkesbury Road to provide improved community amenity in the form of a new front entry, improved street frontage and enable a more cohesive main entrance connecting existing CHW, adjoining research facilities, and the PSB.

The scope of proposed works includes:

- Construction of the main PSB: The main PSB may contain the following uses: perioperative and interventional services, neonatal and paediatric intensive care units, cancer centre, acute inpatient beds, back of house and parent facilities
- Alterations and additions to existing CHW KR and CASB buildings adjoining PSB site area to accommodate floor realignment and movement corridors

- Construction of a new pedestrian canopy link through KR, connecting the main PSB with the CHW forecourt and existing hospital entrance
- The canopy link is to be lifted 2 storeys above the CHW forecourt
- A new ground plane / forecourt landscaped area extending from Hawkesbury Road to the proposed PSB
- Tree removal to accommodate the construction of the PSB



Figure 1: Children's Hospital at Westmead site boundary

2 Dangerous Goods Quantity

Table 1: Dangerous goods Classes and quantities stored at CHW (source: Appendix A)

Class, Packing Group	Total Quantity (kg/L)
Class 2.1	26.38
2.2, excluding 5.1 subsidiary	7,384,999
2.2/5.1	1,124,093

Class, Packing Group	Total Quantity (kg/L)
3, II	2.01
3, III	4.5
4.1	0.5
5.1 only	0
6.1	0.5
8, II	0.53
8, III	51.13
9	0.07

Note, while Class 2.2 does not present an offsite risk according to Applying SEPP 33, however subsidiary Class 5.1 does, and needs to be considered when calculating thresholds.

3 SEPP 33 Planning Requirements

SEPP 33 (State Environmental Planning Policy No. 33 Hazardous and Offensive Development) is a legislative requirement in NSW. SEPP 33 sets out to:

- amend the definitions of hazardous and offensive industries where used in environmental planning instruments;
- render ineffective a provision of any environmental planning instrument that prohibits development for the purpose of a storage facility on the ground that the facility is hazardous or offensive if it is not a hazardous or offensive storage establishment as defined in the Policy;
- ensure that in determining whether a development is a hazardous or offensive industry, any measures proposed to be employed to reduce the impact of the development are taken into account; and
- ensure that in considering any application to carry out potentially hazardous or offensive development, the consent authority has sufficient information to assess whether the development is hazardous or offensive and to impose conditions to reduce or minimise any adverse impact.

Applying SEPP 33 is a guideline on interpreting and implementing the legislative requirement that includes a screening method based on the quantities of dangerous goods on a site, to assist in determining if a development is likely to be potentially hazardous industry.

3.1 Definitions

Potentially hazardous industry is defined by SEPP 33 to mean a development for the purposes of any industry which, if the development were to operate without employing any measures (including, for example, isolation from existing or likely future development on other land) to reduce or minimise its impact in the locality or on the existing or likely future development on other land, would pose a significant risk in relation to the locality—

- (a) to human health, life or property, or
- (b) to the biophysical environment,

and includes a hazardous industry and a hazardous storage establishment.

A **potentially offensive industry** means a development for the purposes of an industry which, if the development were to operate without employing any measures (including, for example, isolation from existing or likely future development on other land) to reduce or minimise its impact in the locality or on the existing or likely future development on other land, would emit a polluting discharge (including for example, noise) in a manner which would have a significant adverse impact in the locality or on the existing or likely future development on other land, and includes an offensive industry and an offensive storage establishment.

3.2 SEPP 33 Process

The following Figure 2 illustrates the procedure for determining if SEPP 33 applies.

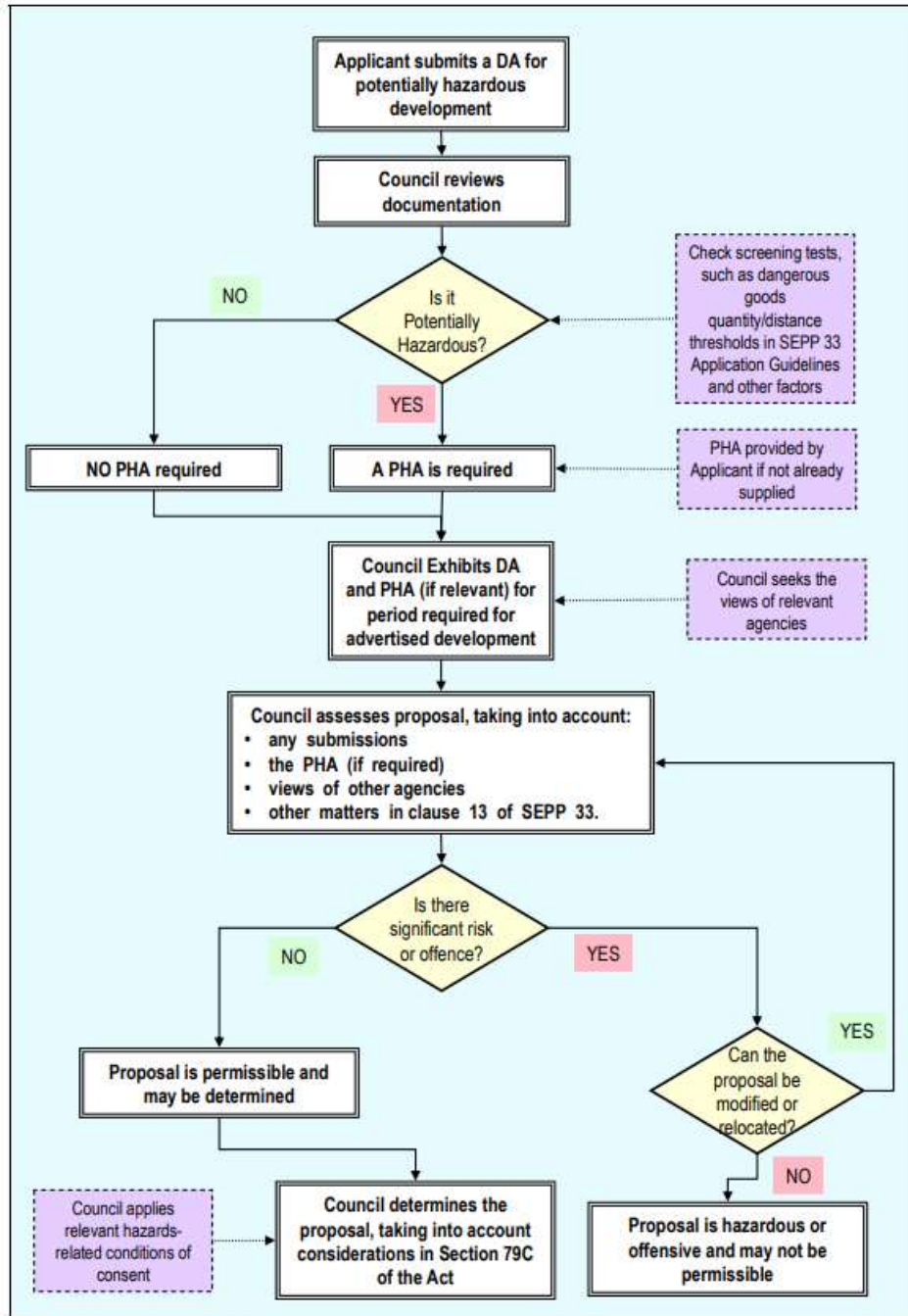


Figure 2: The SEPP 33 process (source: Applying SEPP 33 Figure 1)

To determine if the proposed development is potentially hazardous, screening tests for the quantity/distance thresholds for dangerous goods is required.

3.3 Risk Screening

The following Table 2 shows which dangerous goods Classes exceeds the threshold quantities.

Table 2: Screening threshold quantity (source: Applying SEPP 33 Table 1 and Table 3).

Class	Method to Use/Minimum Quantity	Threshold Exceeded?
Class 2.1, pressurised	Figure 6 of SEPP33 if greater than 100kg	No
2.2, excluding 5.1	N/A	No
3, II	Figure 9 of SEPP33 if greater than 5 tonnes	No
3, III	Figure 9 of SEPP33 if greater than 5 tonnes	No
4.1	5 tonnes	No
5.1 (including subsidiary risk)	5 tonnes	Yes
6.1	2.5 tonnes of PG II and III	No
8, II	25 tonnes	No
8, III	50 tonnes	No
9	N/A	No

Regarding transportation issues, the proposed development may be potentially hazardous if the number of generated traffic movements (for significant quantities of hazardous materials entering or leaving the site) is above the annual or weekly cumulative vehicle movements shown in Figure 3.

Class	Vehicle Movements		Minimum quantity*	
	Cumulative Annual	Peak or Weekly	per load (tonne)	
			Bulk	Packages
1	see note	see note	see note	
2.1	>500	>30	2	5
2.3	>100	>6	1	2
3PGI	>500	>30	1	1
3PGII	>750	>45	3	10
3PGIII	>1000	>60	10	no limit
4.1	>200	>12	1	2
4.2	>100	>3	2	5
4.3	>200	>12	5	10
5	>500	>30	2	5
6.1	all	all	1	3
6.2	see note	see note	see note	
7	see note	see note	see note	
8	>500	>30	2	5
9	>1000	>60	no limit	

Note: Where proposals include materials of class 1, 6.2 or 7, the Department of Planning should be contacted for advice. Classes used are those referred to in the Dangerous Goods Code and are explained in Appendix 7.

* If quantities are below this level, the potential risk is unlikely to be significant unless the number of traffic movements is high.

Figure 3: Transportation screening thresholds (source: Applying SEPP 33 Table 2)

The Sydney Children's Hospital Network confirmed that the oxygen deliveries are greater than two tonnes but delivered fortnightly. The total deliveries are approximately 25 annually. All other dangerous goods are lower in the number of deliveries and volume.

As the annual number of generated traffic movements is not above 500 for oxygen, despite the minimum load being above two tonnes, a route evaluation study in accordance with the Department of Planning's HIPAP 11: Route Selection is not necessary. The PHA need not consider the transportation issue.

3.4 Applicability

As the quantity threshold test for Class 5.1 was exceeded, the proposed development should be considered potentially hazardous and SEPP 33 will apply.

A preliminary hazard analysis (PHA) must be submitted with the development application. The PHA should be prepared in accordance with Hazardous Industry Planning Advisory Paper No. 6 — Hazard Analysis. An outline of the requirements for the preparation and assessment of a PHA is given in Applying SEPP 33 Appendix 5.

Note, a PHA must consider all the dangerous goods stored, even if the quantity/distance threshold was not exceeded.

4 Conclusion

The dangerous goods of Class 2.2/5.1 i.e. refrigerated liquid oxygen vessels, medical oxygen cylinders and medical nitrous oxide, exceed the screening threshold of SEPP 33. The proposed development would be considered potentially hazardous and a PHA must be submitted. The PHA should be prepared in accordance with Hazardous Industry Planning Advisory Paper No. 6 — Hazard Analysis

Appendix A

Dangerous Goods Manifest

Dangerous Goods Register

(Location Name: CHILDRENS HOSPITAL AT WESTMEAD/ BLOCK 5/ LEVEL 3/ BIOMEDICAL ENGINEERING, Child Locations Included)

(Sort By: Product Name, Filter By: None)

Stock Number	Product Name							Supplier (Emergency Contact)						
	Dangerous Good	UN number	Packing group	C1 / C2 Combustible	Hazchem Code	Status	Container Tracking	Number Of Containers	Container Size	Quantity (Kg/L)			Risk Assessment	SDS Date
										Max	Container	Actual		

Location: CHILDRENS HOSPITAL AT WESTMEAD/ BLOCK 5/ LEVEL 3/ BIOMEDICAL ENGINEERING/ DIALYSIS ROOM

3126	3M AVAGARD ANTISEPTIC HAND RUB WITH CHLORHEXIDINE GLUCONATE 0.5% W/V IN 70% V/V ETHANOL 9250H & 9250P							3M AUSTRALIA PTY LIMITED (1800 097 146)						
	DG 3	UN 1170	PG III	-	•2Y	Approved	No	1	500 mL		0.5 L		Available	01-Mar-2020
134	BAXTER DIALOX							BAXTER HEALTHCARE PTY LTD (1800 229 839; 13 11 26)						
	DG 8	UN 3265	PG III	-	2X	Approved	No	1	5000 mL		5 L		Available	12-Mar-2018
2797	ISOWIPE							O&M HALYARD AUSTRALIA (1800 664 227)						
	DG 4.1	UN 3175	PG II	-	1Z	Approved	No	1	500 g		0.5 Kg		Available	04-Oct-2019

Location: CHILDRENS HOSPITAL AT WESTMEAD/ BLOCK 5/ LEVEL 3/ BIOMEDICAL ENGINEERING/ ELECTRONIC WORK AREA (53BM019)

2246	3M 700 ADHESIVE CLEANER AND SOLVENT							3M AUSTRALIA PTY LIMITED (1800 097 146)						
	DG 2.1	UN 1950	-	-	2YE	None	No	1	350 g		0.35 Kg		Available	10-Nov-2019
3126	3M AVAGARD ANTISEPTIC HAND RUB WITH CHLORHEXIDINE GLUCONATE 0.5% W/V IN 70% V/V ETHANOL 9250H & 9250P							3M AUSTRALIA PTY LIMITED (1800 097 146)						
	DG 3	UN 1170	PG III	-	•2Y	Approved	No	1	0 None		0		Available	01-Mar-2020
240114	634A3 - ACETONE							OTTO BOCK AUSTRALIA PTY. LTD. ((02) 8818 2800)						
	DG 3	UN 1090	PG II	-	•2YE	None	No	1	0 None		0		-	23-Sep-2019
7527578	ALPHA ADHESIVE THIXOFIX (TOLUENE FREE) #132-560, 132-661							RS COMPONENTS PTY LTD (1800 039 008; (03) 9573 3112)						
	DG 3	UN 1133	PG II	-	•3YE	None	No	1	0 None		0		-	05-May-2017
11993	BLOC'LUBE TAMPER EVIDENT SEAL RED							ELECTROLUBE. A DIVISION OF HK WENTWORTH LTD ((02) 8014 4558)						
	DG 3	UN 1993	PG II	-	•3YE	None	No	1	15 mL		0.01 L		Available	04-Dec-2016
1701	CAULK TRAY ADHESIVE							DENTSPLY SIRONA PTY LTD (1300 552 929 (Mon-Fri 9am-5pm))						
	DG 3	UN 1173	PG II	-	•3YE	Approved	No	1	0 L		0 L		Available	01-Nov-2019
5496	CIRCUIT BOARD CLEANER (AEROSOL)							RICHARD FOOT PTY LTD ((02) 9979 8311)						
	DG 2.1	UN 1950	-	-	2YE	None	No	1	0 g		0 Kg		-	31-Mar-2018
8044	CLEANING FLUID #513-679							RS COMPONENTS PTY LTD (1800 039 008; (03) 9573 3112)						
	DG 2.1	UN 1950	-	-	2YE	None	No	1	0 mL		0 L		-	27-Oct-2016
14081	CLEAR MECHANICAL OIL							H K WENTWORTH PTY LIMITED ((02) 8014 4558)						
	DG 2.1	UN 1950	-	-	2YE	None	No	1	0 None		0		-	02-Mar-2017
1998	CRC 3055 808 SILICONE SPRAY (AEROSOL)							CRC INDUSTRIES (AUST) PTY LIMITED (13 11 26 (PIC))						

Dangerous Goods Register

(Location Name: CHILDRENS HOSPITAL AT WESTMEAD/ BLOCK 5/ LEVEL 3/ BIOMEDICAL ENGINEERING, Child Locations Included)

(Sort By: Product Name, Filter By: None)

Stock Number	Product Name							Supplier (Emergency Contact)						
	Dangerous Good	UN number	Packing group	C1 / C2 Combustible	Hazchem Code	Status	Container Tracking	Number Of Containers	Container Size	Quantity (Kg/L)			Risk Assessment	SDS Date
										Max	Container	Actual		
	DG 2.1	UN 1950	-	-	2Y	Approved	No	1	0 L		0 L		Available	31-Jul-2020
1377	ELECTRICAL CONTACT CLEANER LUBRICANT							RICHARD FOOT PTY LTD ((02) 9979 8311)						
	DG 2.1	UN 1950	-	-	2YE	None	No	1	175 g		0.17 Kg		-	31-Mar-2018
4874	ELECTRICAL QUALITY SILICONE							CRC INDUSTRIES (AUST) PTY LIMITED (13 11 26 (PIC))						
	DG 2.1	UN 1950	-	-	2Y	None	No	1	0 g		0 Kg		Available	30-Jul-2020
2975	ELECTRONIC CLEANING SOLVENT NO.1							RICHARD FOOT PTY LTD ((02) 9979 8311)						
	DG 2.1	UN 1950	-	-	2YE	None	No	1	0 None		0		-	31-Mar-2018
10457	ELECTRONIC CLEANING SOLVENT PLUS AEROSOL #175-6473							RS COMPONENTS PTY LTD (1800 039 008; (03) 9573 3112)						
	DG 2.1	UN 1950	-	-	2YE	Approved	No	1	0 mL		0 L		Available	27-Oct-2016
2120	ETHANOL 70% (UNDENATURED, WATER ONLY)							THERMO FISHER SCIENTIFIC AUSTRALIA PTY LTD ((03) 9757 4559/ (02) 8014 4558)						
	DG 3	UN 1170	PG II	-	●2YE	Approved	No	1	0 mL		0 L		Available	15-Apr-2020
242356	ETHANOL 95 SG (SVR 95%)							RECOCHEM INC ((07) 3308 5200; 1300 131 001 (After hours)/ 0800 764 766)						
	DG 3	UN 1170	PG II	-	●2YE	None	No	1	1 L		1 L		Available	20-Feb-2017
7525948	ETHANOL UNDENATURED							AUSTRALIAN CHEMICAL REAGENTS (ACR) ((08) 8440 2000 (Mon - Fri 8:30am - 5:00pm)/ 1800 127 406)						
	DG 3	UN 1170	PG II	-	●2YE	None	No	1	0 mL		0 L		Available	31-Oct-2015
7760	FIX ADHESIVE AEROSOL							DENTSPLY SIRONA PTY LTD (1300 552 929 (Mon-Fri 9am-5pm))						
	DG 2.1	UN 1950	-	-	2YE	None	No	1	0 None		0		Available	27-Jun-2017
2976	FREEZER SPRAY							RICHARD FOOT PTY LTD ((02) 9979 8311)						
	DG 2.2	UN 3159	-	-	2YE	None	No	1	0 None		0		-	31-Mar-2018
241582	INDUSTRIAL METHYLATED SPIRITS (IMS)							WILMAR BIOETHANOL (AUSTRALIA) PTY LTD (1800 774 557/ 13 11 26 (available in Australia only))						
	DG 3	UN 1170	PG II	-	●2YE	None	No	1	0 mL		0 L		Available	16-Dec-2015
2797	ISOWIPE							O&M HALYARD AUSTRALIA (1800 664 227)						
	DG 4.1	UN 3175	PG II	-	1Z	Approved	No	1	0 T		0 Kg		Available	04-Oct-2019
3863	KIMCARE MICROMIST AIR NEUTRALISER / MORNING AIR SCENTED							KIMBERLY-CLARK AUSTRALIA PTY LTD ((02) 9963 8888; or 1800 647 994)						
	DG 2.1	UN 1950	-	-	2YE	None	No	1	54 mL		0.05 L		Available	22-Sep-2016
3349	LIQUID PAPER CORRECTION FLUID OPTIMIZATION							NEWELL AUSTRALIA (1800 639 355)						
	DG 3	UN 1993	PG II	-	●3YE	Approved	No	1	0 mL		0 L		Available	(PRODUCT OBSOLETE)
3382	LOCTITE 401							HENKEL AUSTRALIA PTY LTD (1800 032 379)						

Dangerous Goods Register

(Location Name: CHILDRENS HOSPITAL AT WESTMEAD/ BLOCK 5/ LEVEL 3/ BIOMEDICAL ENGINEERING, Child Locations Included)

(Sort By: Product Name, Filter By: None)

Stock Number	Product Name							Supplier (Emergency Contact)						
	Dangerous Good	UN number	Packing group	C1 / C2 Combustible	Hazchem Code	Status	Container Tracking	Number Of Containers	Container Size	Quantity (Kg/L)			Risk Assessment	SDS Date
										Max	Container	Actual		
	DG 9	UN 3334	-	C1	2Z	None	No	1	25 mL		0.03 L		Available	02-Apr-2020
13634	LOCTITE 401 #514-587, 496-091, 408-4169, 409-1476, 448-4547, 473-596, 918-4832, 258-5856, 615-9265, 101-6006							RS COMPONENTS PTY LTD (1800 039 008; (03) 9573 3112)						
	DG 9	UN 3334	-	C1	2Z	None	No	1	0 None		0		-	22-Jun-2016
241506	MEDICAL AIR, COMPRESSED							BOC LIMITED (AUSTRALIA) (1800 653 572 (24/7) (Australia only))						
	DG 2.2	UN 1002	-	-	2T	Approved	No	1	0 Gas Cylinder - Size D		0 L		Available	31-Jan-2020
37706701	MEDICAL OXYGEN, COMPRESSED							BOC LIMITED (AUSTRALIA) (1800 653 572 (24/7) (Australia only))						
	DG 2.2 / 5.1	UN 1072	-	-	2S	None	No	2	0 Gas Cylinder - Size D		0 L		Available	11-Nov-2020
14084	MERCURISORB MERCURY SPILLS CLEAN UP KIT							THERMO FISHER SCIENTIFIC AUSTRALIA PTY LTD ((03) 9757 4559/ (02) 8014 4558)						
	DG 5.1	UN 1493	PG II	-	1Y	None	No	1	0 None		0		-	08-Oct-2017
242744	MOLYKOTE DX PASTE							DOW CHEMICAL (AUSTRALIA) (1800 033 882 (AUS); 0800 243 622 (NZ))						
	DG 9	UN 3077	PG III	C2	2Z	None	No	1	0 g		0 Kg		-	20-Apr-2018
6324	NATURAL DEGREASER							CRC INDUSTRIES (AUST) PTY LIMITED (13 11 26 (PIC))						
	DG 2.1	UN 1950	-	-	2Y	None	No	1	0 None		0		-	30-Jul-2020
2099	ORTHOPHOSPHORIC ACID 85%							THERMO FISHER SCIENTIFIC AUSTRALIA PTY LTD ((03) 9757 4559/ (02) 8014 4558)						
	DG 8	UN 1805	PG III	-	2R	None	No	1	0 L		0 L		Available	04-Jul-2020
7522979	PROMED ISOPROPYL WIPES							THERMO FISHER SCIENTIFIC AUSTRALIA PTY LTD ((03) 9757 4559/ (02) 8014 4558)						
	DG 4.1	UN 3175	PG II	-	1Z	None	No	1	0 None		0		Available	24-Aug-2017
502	PTFE / SILICONE LUBRICANT #569-256							RS COMPONENTS PTY LTD (1800 039 008; (03) 9573 3112)						
	DG 2.1	UN 1950	-	-	2YE	None	No	1	1 None		0		Available	27-Nov-2016
7527584	RS PRO ELECTRONIC RINSING SOLUTION - SAFERINSE 2000 #497-016							RS COMPONENTS PTY LTD (1800 039 008; (03) 9573 3112)						
	DG 2.1	UN 1950	-	-	2YE	None	No	1	0 None		0		-	12-Nov-2018
5516	SILICONE GREASE COMPOUND AEROSOL							H K WENTWORTH PTY LIMITED ((02) 8014 4558)						
	DG 2.1	UN 1950	-	-	2YE	None	No	1	200 mL		0.2 L		-	14-Mar-2017
37710189	SILICONE HEAT TRANSFER COMPOUND PLUS #301-2826							RS COMPONENTS PTY LTD (1800 039 008; (03) 9573 3112)						
	DG 9	UN 3082	PG III	C2	●3Z	None	No	1	0 None		0		-	08-Feb-2017
6641	TETRAHYDROFURAN							THERMO FISHER SCIENTIFIC AUSTRALIA PTY LTD ((03) 9757 4559/ (02) 8014 4558)						
	DG 3	UN 2056	PG II	-	●2YE	None	No	1	0 None		0		-	04-Jul-2020

Dangerous Goods Register

(Location Name: CHILDRENS HOSPITAL AT WESTMEAD/ BLOCK 5/ LEVEL 3/ BIOMEDICAL ENGINEERING, Child Locations Included)

(Sort By: Product Name, Filter By: None)

Stock Number	Product Name							Supplier (Emergency Contact)						
	Dangerous Good	UN number	Packing group	C1 / C2 Combustible	Hazchem Code	Status	Container Tracking	Number Of Containers	Container Size	Quantity (Kg/L)			Risk Assessment	SDS Date
										Max	Container	Actual		
12181	VENTTI GAS REFILL							SCANDINAVIAN TOBACCO GROUP AUSTRALIA PTY LTD (1800 335 691)						
	DG 2.1	UN 1950	-	-	2YE	None	No	1	0 mL		0 L		Available	10-Aug-2015
1560	WD - 40 AEROSOL							WD-40 COMPANY (AUST) PTY LTD (1800 024 973)						
	DG 2.1	UN 1950	-	-	2YE	Approved	No	1	0 L		0 L		Available	05-Jul-2018

Location: CHILDRENS HOSPITAL AT WESTMEAD/ BLOCK 5/ LEVEL 3/ BIOMEDICAL ENGINEERING/ INHALATION THERAPY

3126	3M AVAGARD ANTISEPTIC HAND RUB WITH CHLORHEXIDINE GLUCONATE 0.5% W/V IN 70% V/V ETHANOL 9250H & 9250P							3M AUSTRALIA PTY LIMITED (1800 097 146)						
	DG 3	UN 1170	PG III	-	•2Y	Approved	No	1	0 mL		0 L		Available	01-Mar-2020
2255	ACETYLENE							BOC LIMITED (AUSTRALIA) (1800 653 572 (24/7) (Australia only))						
	DG 2.1	UN 1001	-	-	2SE	None	No	1	0 Gas Cylinder - Size G		0 L		Available	13-Sep-2018
5562	ACRIFIX 1R 0192							ACRYLIC TECHNOLOGIES AUSTRALIA PTY LTD (1800 127 406; (03) 9353 0199)						
	DG 3	UN 1133	PG II	-	•3YE	Approved	No	1	0 T		0 Kg		-	31-Jul-2018
7524328	ANIOS RHW							GALLAY MEDICAL & SCIENTIFIC PTY LTD (1300 425 529)						
	DG 3	UN 1993	PG III	-	•3Y	Approved	No	1	0 L		0 L		Available	24-Nov-2016
2149	ARGON, COMPRESSED							BOC LIMITED (AUSTRALIA) (1800 653 572 (24/7) (Australia only))						
	DG 2.2	UN 1006	-	-	2T	Approved	No	1	0 Gas Cylinder - Size G		0 L		Available	13-Sep-2019
6060	ASEPTI VALIDATE							ECOLAB PTY LTD (1800 205 506, +64 7 958 2372)						
	DG 8	UN 3266	PG II	-	2X	Approved	No	1	0 L		0 L		-	16-Dec-2015
8004	CARBOGEN							BOC LIMITED (AUSTRALIA) (1800 653 572 (24/7) (Australia only))						
	DG 2.2 / 5.1	UN 3156	-	-	2S	None	No	1	0 Gas Cylinder - Size E		0 L		Available	08-Jul-2016
11902	CARBON DIOXIDE CYLINDER, GAS AND LIQUID WITHDRAWAL							BOC LIMITED (AUSTRALIA) (1800 653 572 (24/7) (Australia only))						
	DG 2.2	UN 1013	-	-	2T	Approved	No	1	0 Gas Cylinder - Size C		0 L		Available	17-Nov-2016
1998	CRC 3055 808 SILICONE SPRAY (AEROSOL)							CRC INDUSTRIES (AUST) PTY LIMITED (13 11 26 (PIC))						

Dangerous Goods Register

(Location Name: CHILDRENS HOSPITAL AT WESTMEAD/ BLOCK 5/ LEVEL 3/ BIOMEDICAL ENGINEERING, Child Locations Included)

(Sort By: Product Name, Filter By: None)

Stock Number	Product Name							Supplier (Emergency Contact)						
	Dangerous Good	UN number	Packing group	C1 / C2 Combustible	Hazchem Code	Status	Container Tracking	Number Of Containers	Container Size	Quantity (Kg/L)			Risk Assessment	SDS Date
										Max	Container	Actual		
	DG 2.1	UN 1950	-	-	2Y	Approved	No	1	0 L		0 L		Available	31-Jul-2020
2975	ELECTRONIC CLEANING SOLVENT NO.1							RICHARD FOOT PTY LTD ((02) 9979 8311)						
	DG 2.1	UN 1950	-	-	2YE	None	No	1	0 None		0		-	31-Mar-2018
2313	HELIUM, COMPRESSED							BOC LIMITED (AUSTRALIA) (1800 653 572 (24/7) (Australia only))						
	DG 2.2	UN 1046	-	-	2T	None	No	1	0 None		0		Available	31-Jan-2020
5472	HYDROGEN							BOC LIMITED (AUSTRALIA) (1800 653 572 (24/7) (Australia only))						
	DG 2.1	UN 1049	-	-	2SE	None	No	1	0 None		0		-	15-May-2018
12367	INOMAX							IKARIA AUSTRALIA (1300 198 565)						
	DG 2.2	UN 1956	-	-	2TE	None	No	2	2 Gas Cylinder - Size 88		62.89 L		Available	11-Nov-2016
2797	ISOWIPE							O&M HALYARD AUSTRALIA (1800 664 227)						
	DG 4.1	UN 3175	PG II	-	1Z	Approved	No	1	0 T		0 Kg		Available	04-Oct-2019
511855	LIQUID PYRONEG							DIVERSEY AUSTRALIA PTY. LIMITED (1800 033 111 (24 hrs))						
	DG 8	UN 1814	PG III	-	2R	None	No	1	0 None		0		Available	02-Feb-2018
2278	LPG							COREGAS PTY LTD (1300607577)						
	DG 2.1	UN 1075	-	-	2YE	None	No	1	0 Kg		0 Kg		Available	29-Nov-2018
2001	MEDAC							WHITELEY CORPORATION PTY LTD ((02) 9929 9155; 13 11 26)						
	DG 8	UN 1760	PG III	-	2X	Approved	No	8	5 L		40 L		Available	12-Sep-2016
241506	MEDICAL AIR, COMPRESSED							BOC LIMITED (AUSTRALIA) (1800 653 572 (24/7) (Australia only))						
	DG 2.2	UN 1002	-	-	2T	Approved	No	1	0 Gas Cylinder - Size D		0 L		Available	31-Jan-2020
37709093	MEDICAL LIQUID OXYGEN							BOC LIMITED (AUSTRALIA) (1800 653 572 (24/7) (Australia only))						
	DG 2.2 / 5.1	UN 1073	-	-	2P	None	No	1	0 None		0		Available	23-Mar-2016
7527386	MEDICAL OXYGEN, COMPRESSED							BOC LIMITED (AUSTRALIA) (1800 653 572 (24/7) (Australia only))						
	DG 2.2 / 5.1	UN 1072	-	-	2S	None	No	1	0 None		0		Available	11-Nov-2020
9661	METHYLATED SPIRIT (5% MEOH)							THERMO FISHER SCIENTIFIC AUSTRALIA PTY LTD ((03) 9757 4559/ (02) 8014 4558)						
	DG 3	UN 1170	PG II	-	•2YE	None	No	1	0 L		0 L		Available	15-Apr-2020
234G2	NITROGEN, COMPRESSED							BOC LIMITED (AUSTRALIA) (1800 653 572 (24/7) (Australia only))						
	DG 2.2	UN 1066	-	-	2T	Approved	No	1	0 Gas		0 L		Available	11-May-2018

Dangerous Goods Register

(Location Name: CHILDRENS HOSPITAL AT WESTMEAD/ BLOCK 5/ LEVEL 3/ BIOMEDICAL ENGINEERING, Child Locations Included)

(Sort By: Product Name, Filter By: None)

Stock Number	Product Name							Supplier (Emergency Contact)						
	Dangerous Good	UN number	Packing group	C1 / C2 Combustible	Hazchem Code	Status	Container Tracking	Number Of Containers	Container Size	Quantity (Kg/L)			Risk Assessment	SDS Date
									Cylinder - Size G					
243307	NITROUS OXIDE, COMPRESSED							BOC LIMITED (AUSTRALIA) (1800 653 572 (24/7) (Australia only))						
	DG 2.2 / 5.1	UN 1070	-	-	2P	None	No	1	0 None		0		Available	01-Nov-2016
7548	OXYGEN COMPRESSED							COREGAS PTY LTD (1300607577)						
	DG 2.2 / 5.1	UN 1072	-	-	2S	Approved	No	1	0 Gas Cylinder - Size C		0 L		Available	02-Jul-2019
7522979	PROMED ISOPROPYL WIPES							THERMO FISHER SCIENTIFIC AUSTRALIA PTY LTD ((03) 9757 4559/ (02) 8014 4558)						
	DG 4.1	UN 3175	PG II	-	1Z	None	No	1	0 None		0		Available	24-Aug-2017
5471	PROPANE							BOC LIMITED (AUSTRALIA) (1800 653 572 (24/7) (Australia only))						
	DG 2.1	UN 1978	-	-	2YE	None	No	1	0 None		0		Available	30-Mar-2017
1857	VIREX II J-FLEX							DIVERSEY AUSTRALIA PTY. LIMITED (1800 033 111 (24 hrs))						
	DG 8	UN 1903	PG III	C1	2X	Approved	No	4	1.5 L		6 L		Available	18-Nov-2018

Location: CHILDRENS HOSPITAL AT WESTMEAD/ BLOCK 5/ LEVEL 3/ BIOMEDICAL ENGINEERING/ MECHANICAL WORKSHOP

2245	3M 100 ADHESIVE CLEANER							3M AUSTRALIA PTY LIMITED (1800 097 146)						
	DG 3	UN 1993	PG II	-	•3YE	None	No	1	0 L		0 L		Available	13-Jul-2017
2246	3M 700 ADHESIVE CLEANER AND SOLVENT							3M AUSTRALIA PTY LIMITED (1800 097 146)						
	DG 2.1	UN 1950	-	-	2YE	Approved	No	1	0 g		0 Kg		Available	10-Nov-2019
2254	3M HI-TACK SPRAY ADHESIVE 76							3M AUSTRALIA PTY LIMITED (1800 097 146)						
	DG 2.1	UN 1950	-	-	2YE	None	No	1	0 g		0 Kg		Available	15-Nov-2016
6535	3M SCOTCHGARD PROTECTOR FOR FABRIC & UPHOLSTERY							3M AUSTRALIA PTY LIMITED (1800 097 146)						
	DG 2.1	UN 1950	-	-	2YE	None	No	1	0 g		0 Kg		Available	09-Oct-2017
2255	ACETYLENE							BOC LIMITED (AUSTRALIA) (1800 653 572 (24/7) (Australia only))						
	DG 2.1	UN 1001	-	-	2SE	None	No	1	1 Gas Cylinder - Size E		23.26 L		Available	13-Sep-2018
5562	ACRIFIX 1R 0192							ACRYLIC TECHNOLOGIES AUSTRALIA PTY LTD (1800 127 406; (03) 9353 0199)						
	DG 3	UN 1133	PG II	-	•3YE	Approved	No	1	0 T		0 Kg		-	31-Jul-2018
7527578	ALPHA ADHESIVE THIXOFIX (TOLUENE FREE) #132-560, 132-661							RS COMPONENTS PTY LTD (1800 039 008; (03) 9573 3112)						

Dangerous Goods Register

(Location Name: CHILDRENS HOSPITAL AT WESTMEAD/ BLOCK 5/ LEVEL 3/ BIOMEDICAL ENGINEERING, Child Locations Included)

(Sort By: Product Name, Filter By: None)

Stock Number	Product Name							Supplier (Emergency Contact)						
	Dangerous Good	UN number	Packing group	C1 / C2 Combustible	Hazchem Code	Status	Container Tracking	Number Of Containers	Container Size	Quantity (Kg/L)			Risk Assessment	SDS Date
										Max	Container	Actual		
	DG 3	UN 1133	PG II	-	●3YE	None	No	1	0 None		0		-	05-May-2017
7527581	ARALDITE 2011 HARDENER							BOEING DISTRIBUTION SERVICES (FORMERLY KLX AEROSPACE) ((07) 3292 5200)						
	DG 8	UN 2735	PG II	C2	2X	None	No	1	25 mL		0.03 L		-	15-Feb-2016
7527580	ARALDITE 2011 RESIN							BOEING DISTRIBUTION SERVICES (FORMERLY KLX AEROSPACE) ((07) 3292 5200)						
	DG 9	UN 3082	PG III	C2	2X	None	No	1	25 mL		0.03 L		-	18-Jul-2017
7523709	ARALDITE 5 MINUTE EPOXY ADHESIVE (CLASS 8) - PART A							SELLEYS, A DIVISION OF DULUXGROUP (AUSTRALIA) PTY LTD (1800 033 111)						
	DG 8	UN 2735	PG III	C2	2X	None	No	1	0 mL		0 L		Available	(PRODUCT OBSOLETE)
458	ARALDITE RAPID RESIN							REBAIN INTERNATIONAL (AUST) PTY LTD ((03) 9706 9400)						
	DG 9	UN 3082	PG III	C2	●3Z	None	No	1	0 None		0		Available	23-Jul-2018
7167	ARGON, COMPRESSED (AR)							AIR LIQUIDE AUSTRALIA LIMITED (1800 800 055, 1800 812 588)						
	DG 2.2	UN 1006	-	-	2T	None	No	1	0 Gas Cylinder - Size E		0 L		Available	18-Dec-2016
3414	BLOC'LUBE TAMPER EVIDENT SEAL RED							ELECTROLUBE. A DIVISION OF HK WENTWORTH LTD ((02) 8014 4558)						
	DG 3	UN 1993	PG II	-	●3YE	None	No	1	0 mL		0 L		Available	04-Dec-2016
1789	BRASSO							RECKITT BENCKISER (AUSTRALIA) PTY LTD (13 11 26)						
	DG 3	UN 1300	PG III	-	3Y	Approved	No	1	1 mL		0 L		Available	14-Jun-2018
3914	CIGWELD COMWELD 965 SOLDERING FLUX							CIGWELD PTY LTD ((03) 9474 7400)						
	DG 8	UN 1840	PG III	-	2X	None	No	1	125 mL		0.13 L		Available	27-Jun-2017
5184	CIGWELD COMWELD SILVER BRAZING FLUX NO. 2							CIGWELD PTY LTD ((03) 9474 7400)						
	DG 8 / 6.1	UN 1811	PG II	-	2X	None	No	1	500 g		0.5 Kg		Available	08-Sep-2016
5496	CIRCUIT BOARD CLEANER (AEROSOL)							RICHARD FOOT PTY LTD ((02) 9979 8311)						
	DG 2.1	UN 1950	-	-	2YE	None	No	1	175 g		0.17 Kg		-	31-Mar-2018
1998	CRC 3055 808 SILICONE SPRAY (AEROSOL)							CRC INDUSTRIES (AUST) PTY LIMITED (13 11 26 (PIC))						
	DG 2.1	UN 1950	-	-	2Y	None	No	1	500 mL		0.5 L		Available	31-Jul-2020
242578	CRC 3055 808 SILICONE SPRAY (AEROSOL)							CRC INDUSTRIES (AUST) PTY LIMITED (13 11 26 (PIC))						
	DG 2.1	UN 1950	-	-	2Y	None	No	1	0 None		0		Available	31-Jul-2020
2977	DOW CORNING OS-2 SILICONE CLEANER & SURFACE PREP							DOW CORNING AUSTRALIA PTY LTD (1300 360 732)						
	DG 2.1	UN 1950	-	-	2YE	None	No	1	0 None		0		-	27-Apr-2016
1377	ELECTRICAL CONTACT CLEANER LUBRICANT							RICHARD FOOT PTY LTD ((02) 9979 8311)						

Dangerous Goods Register

(Location Name: CHILDRENS HOSPITAL AT WESTMEAD/ BLOCK 5/ LEVEL 3/ BIOMEDICAL ENGINEERING, Child Locations Included)

(Sort By: Product Name, Filter By: None)

Stock Number	Product Name							Supplier (Emergency Contact)						
	Dangerous Good	UN number	Packing group	C1 / C2 Combustible	Hazchem Code	Status	Container Tracking	Number Of Containers	Container Size	Quantity (Kg/L)			Risk Assessment	SDS Date
										Max	Container	Actual		
	DG 2.1	UN 1950	-	-	2YE	None	No	2	175 g		0.35 Kg		-	31-Mar-2018
4874	ELECTRICAL QUALITY SILICONE							CRC INDUSTRIES (AUST) PTY LIMITED (13 11 26 (PIC))						
	DG 2.1	UN 1950	-	-	2Y	None	No	1	300 g		0.3 Kg		Available	30-Jul-2020
4842	GALMET SPRAYPAINT AEROSOL (ALL COLOURS EXCEPT SILVER)							ITW POLYMERS & FLUIDS PTY LTD (1800 385 556 / 0438 465 960/ 1800 039 008/ (03) 9573 3112)						
	DG 2.1	UN 1950	-	-	2YE	None	No	1	0 g		0 Kg		Available	27-Jun-2017
2797	ISOWIPE							O&M HALYARD AUSTRALIA (1800 664 227)						
	DG 4.1	UN 3175	PG II	-	1Z	Approved	No	1	0 T		0 Kg		Available	04-Oct-2019
6657	LOCQSET EPX AUTO 8PG .85OZ PT A							HENKEL AUSTRALIA PTY LTD (1800 032 379)						
	DG 9	UN 3082	PG III	C2	●3Z	None	No	1	0 None		0		-	20-May-2020
242426	LOCTITE 263							HENKEL AUSTRALIA PTY LTD (1800 032 379)						
	DG 9	UN 3082	PG III	C2	●3Z	None	No	1	10 mL		0.01 L		Available	22-Jan-2020
3382	LOCTITE 401							HENKEL AUSTRALIA PTY LTD (1800 032 379)						
	DG 9	UN 3334	-	C1	2Z	None	No	1	0 mL		0 L		Available	02-Apr-2020
5493	LOCTITE SF 770 PRIMER KNOWN AS LOCTITE 770 ACTIVATOR 100ML EN							HENKEL AUSTRALIA PTY LTD (1800 032 379)						
	DG 3	UN 1206	PG II	-	3YE	None	No	1	1 mL		0 L		-	12-Jul-2016
3632	METHYLATED SPIRITS							RECOCHEM INC ((07) 3308 5200; 1300 131 001 (After hours)/ 0800 764 766)						
	DG 3	UN 1170	PG II	-	●2YE	Approved	No	1	1 L		1 L		Available	20-Feb-2017
1352	OXYGEN, COMPRESSED GAS							AIR LIQUIDE AUSTRALIA LIMITED (1800 800 055, 1800 812 588)						
	DG 2.2 / 5.1	UN 1072	-	-	2S	None	No	1	0 Gas Cylinder - Size G		0 L		Available	20-Dec-2016
5560	PENETRENE AEROSOL							QUICK SMART PRODUCTS (13 11 26)						
	DG 2.1	UN 1950	-	-	2YE	None	No	1	0 L		0 L		Available	30-Nov-2016
242250	PLASTIC CEMENT							SHUCARE AUSTRALIA PTY LTD ((03) 9458 4949)						
	DG 3	UN 1133	PG II	-	●3YE	None	No	1	0 None		0		-	27-Nov-2015
12229	POLYGLAZE UPHOLSTERY CLEANER							SELLEYS, A DIVISION OF DULUXGROUP (AUSTRALIA) PTY LTD (1800 033 111)						
	DG 2.1	UN 1950	-	-	2YE	None	No	1	0 g		0 Kg		-	22-Sep-2020
11319	PROMED ISOPROPYL WIPES							THERMO FISHER SCIENTIFIC AUSTRALIA PTY LTD ((03) 9757 4559/ (02) 8014 4558)						
	DG 4.1	UN 3175	PG II	-	1Z	Approved	No	1	0 None		0		Available	24-Aug-2017
2361	ROCOL RTD COMPOUND							ITW POLYMERS & FLUIDS PTY LTD (1800 385 556 / 0438 465 960/ 1800 039 008/ (03) 9573 3112)						
	DG 9	UN 3077	PG III	C2	2Z	None	No	1	0 g		0 Kg		Available	24-Jan-2019

Dangerous Goods Register

(Location Name: CHILDRENS HOSPITAL AT WESTMEAD/ BLOCK 5/ LEVEL 3/ BIOMEDICAL ENGINEERING, Child Locations Included)

(Sort By: Product Name, Filter By: None)

Stock Number	Product Name							Supplier (Emergency Contact)						
	Dangerous Good	UN number	Packing group	C1 / C2 Combustible	Hazchem Code	Status	Container Tracking	Number Of Containers	Container Size	Quantity (Kg/L)			Risk Assessment	SDS Date
										Max	Container	Actual		
7527583	SPOT MARKING PAINT - FLUORO COLOURS (RED, BLUE, ORANGE, PINK, GREEN, YELLOW, PURPLE)							SIGNET PTY LTD ((07) 3245 5798; (07) 3364 2100)						
	DG 2.1	UN 1950	-	-	2YE	None	No	1	350 g		0.35 Kg		Available	13-Jan-2017
2992	WATTYL LACQUER FINISH AEROSOL CLEAR							WATTYL (VALSPAR PAINT (AUSTRALIA)) (1800 039 008)						
	DG 2.1	UN 1950	-	-	2YE	None	No	1	0 None		0		-	16-Oct-2020
1560	WD - 40 AEROSOL							WD-40 COMPANY (AUST) PTY LTD (1800 024 973)						
	DG 2.1	UN 1950	-	-	2YE	Approved	No	1	0 L		0 L		Available	05-Jul-2018
2602	WD-40 BULK LIQUID (2018)							WD-40 COMPANY (AUST) PTY LTD (1800 024 973)						
	DG 3	UN 1268	PG III	-	3Y	None	No	1	4 L		4 L		Available	(PRODUCT OBSOLETE)

Location: CHILDRENS HOSPITAL AT WESTMEAD/ BLOCK 5/ LEVEL 3/ BIOMEDICAL ENGINEERING/ VENTILATOR TEST ROOM

2246	3M 700 ADHESIVE CLEANER AND SOLVENT							3M AUSTRALIA PTY LIMITED (1800 097 146)						
	DG 2.1	UN 1950	-	-	2YE	Approved	No	1	350 g		0.35 Kg		Available	10-Nov-2019
241659	3M AVAGARD ANTISEPTIC HAND RUB WITH CHLORHEXIDINE GLUCONATE 0.5% W/V IN 70% V/V ETHANOL 9250H & 9250P							3M AUSTRALIA PTY LIMITED (1800 097 146)						
	DG 3	UN 1170	PG III	-	•2Y	None	No	1	0 None		0		Available	01-Mar-2020
1998	CRC 3055 808 SILICONE SPRAY (AEROSOL)							CRC INDUSTRIES (AUST) PTY LIMITED (13 11 26 (PIC))						
	DG 2.1	UN 1950	-	-	2Y	Approved	No	1	330 g		0.33 Kg		Available	31-Jul-2020
2313	HELIUM, COMPRESSED							BOC LIMITED (AUSTRALIA) (1800 653 572 (24/7) (Australia only))						
	DG 2.2	UN 1046	-	-	2T	None	No	1	0 None		0		Available	31-Jan-2020
12367	INOMAX							IKARIA AUSTRALIA (1300 198 565)						
	DG 2.2	UN 1956	-	-	2TE	None	No	3	0 Gas Cylinder - Size C		0 L		Available	11-Nov-2016
2797	ISOWIPE							O&M HALYARD AUSTRALIA (1800 664 227)						
	DG 4.1	UN 3175	PG II	-	1Z	Approved	No	1	0 None		0		Available	04-Oct-2019
241506	MEDICAL AIR, COMPRESSED							BOC LIMITED (AUSTRALIA) (1800 653 572 (24/7) (Australia only))						
	DG 2.2	UN 1002	-	-	2T	Approved	No	1	0 Gas Cylinder - Size D		0 L		Available	31-Jan-2020
37706173	MINNCARE COLD STERILANT							ONBOARD SOLUTIONS PTY LTD ((02) 9037 2994)						

Dangerous Goods Register

(Location Name: CHILDRENS HOSPITAL AT WESTMEAD/ BLOCK 5/ LEVEL 3/ BIOMEDICAL ENGINEERING, Child Locations Included)

(Sort By: Product Name, Filter By: None)

Stock Number	Product Name							Supplier (Emergency Contact)						
	Dangerous Good	UN number	Packing group	C1 / C2 Combustible	Hazchem Code	Status	Container Tracking	Number Of Containers	Container Size	Quantity (Kg/L)			Risk Assessment	SDS Date
										Max	Container	Actual		
	DG 5.1 / 8	UN 3149	PG II	-	2W	None	No	1	0 None		0		Available	24-Mar-2016
2488	NITROGEN, COMPRESSED							BOC LIMITED (AUSTRALIA) (1800 653 572 (24/7) (Australia only))						
	DG 2.2	UN 1066	-	-	2T	Approved	No	1	0 Gas Cylinder - Size D		0 L		Available	11-May-2018
4917	NITROUS OXIDE, COMPRESSED & LIQUEFIED GAS (N2O)							AIR LIQUIDE AUSTRALIA LIMITED (1800 800 055, 1800 812 588)						
	DG 2.2 / 5.1	UN 1070	-	-	2P	None	No	1	0 None		0		Available	20-Dec-2016
2151	OXYGEN (MEDICAL)							COREGAS PTY LTD (1300607577)						
	DG 2.2 / 5.1	UN 1072	-	-	2S	Approved	No	2	0 None		0		Available	29-Nov-2018

Dangerous Goods Register

Appendix

Max Quantity	Max Quantity is calculated by multiplying the Max value of the Stock Inventory Item with the Container Size of the Stock Inventory Item, where the Max value is available.
Container Quantity	Container Quantity is calculated by multiplying the Number of Containers of the Stock Inventory Item with the Container Size of the Stock Inventory Item.
Actual Quantity	Actual Quantity is calculated by adding the available quantities in all the Container Items of a Stock Inventory Item where Individual Container Tracking is switched on, and Container Item is active.

Dangerous Goods Register

(Location Name: CHILDRENS HOSPITAL AT WESTMEAD/ BLOCK 5/ LEVEL 1/ BULK MEDICAL GAS STORAGE, Child Locations Included)
(Sort By: Product Name, Filter By: None)

Stock Number	Product Name							Supplier (Emergency Contact)						
	Dangerous Good	UN number	Packing group	C1 / C2 Combustible	Hazchem Code	Status	Container Tracking	Number Of Containers	Container Size	Quantity (Kg/L)			Risk Assessment	SDS Date
										Max	Container	Actual		

Location: CHILDRENS HOSPITAL AT WESTMEAD/ BLOCK 5/ LEVEL 1/ BULK MEDICAL GAS STORAGE/ STORAGE CAGE - NITROGEN

032G	NITROGEN, COMPRESSED							BOC LIMITED (AUSTRALIA) (1800 653 572 (24/7) (Australia only))						
	DG 2.2	UN 1066	-	-	2T	Approved	No	3	109400 L		328200 L		Available	11-May-2018

Location: CHILDRENS HOSPITAL AT WESTMEAD/ BLOCK 5/ LEVEL 1/ BULK MEDICAL GAS STORAGE/ STORE ROOM 1 - VESSEL

37708038	MEDICAL OXYGEN (REFRIGERATED LIQUID)							AIR LIQUIDE HEALTHCARE PTY LIMITED (1800 812 588)						
	DG 2.2 / 5.1	UN 1073	-	-	2P	Approved	No	1	15000 L		15000 L		Available	08-Nov-2017
37708038	MEDICAL OXYGEN (REFRIGERATED LIQUID)							AIR LIQUIDE HEALTHCARE PTY LIMITED (1800 812 588)						
	DG 2.2 / 5.1	UN 1073	-	-	2P	Approved	No	1	1200 L		1200 L		Available	08-Nov-2017

Location: CHILDRENS HOSPITAL AT WESTMEAD/ BLOCK 5/ LEVEL 1/ BULK MEDICAL GAS STORAGE/ STORE ROOM 2 - MEDICAL AIR EMERGENCY SUPPLY

470G	MEDICAL AIR, COMPRESSED							BOC LIMITED (AUSTRALIA) (1800 653 572 (24/7) (Australia only))						
	DG 2.2	UN 1002	-	-	2T	Approved	No	2	51300 L		102600 L		Available	31-Jan-2020
470G	MEDICAL AIR, COMPRESSED							BOC LIMITED (AUSTRALIA) (1800 653 572 (24/7) (Australia only))						
	DG 2.2	UN 1002	-	-	2T	Approved	No	6	115400 L		692400 L		Available	31-Jan-2020

Location: CHILDRENS HOSPITAL AT WESTMEAD/ BLOCK 5/ LEVEL 1/ BULK MEDICAL GAS STORAGE/ STORE ROOM 3 - DRY AIR & NITROUS OXIDE

470G	MEDICAL AIR, COMPRESSED							BOC LIMITED (AUSTRALIA) (1800 653 572 (24/7) (Australia only))						
	DG 2.2	UN 1002	-	-	2T	Approved	No	2	51300 L		102600 L		Available	31-Jan-2020
610G	MEDICAL NITROUS OXIDE, COMPRESSED							BOC LIMITED (AUSTRALIA) (1800 653 572 (24/7) (Australia only))						
	DG 2.2 / 5.1	UN 1070	-	-	2P	Approved	No	2	124000 L		248000 L		Available	01-Nov-2016

Dangerous Goods Register

Appendix

Max Quantity	Max Quantity is calculated by multiplying the Max value of the Stock Inventory Item with the Container Size of the Stock Inventory Item, where the Max value is available.
Container Quantity	Container Quantity is calculated by multiplying the Number of Containers of the Stock Inventory Item with the Container Size of the Stock Inventory Item.
Actual Quantity	Actual Quantity is calculated by adding the available quantities in all the Container Items of a Stock Inventory Item where Individual Container Tracking is switched on, and Container Item is active.

Dangerous Goods Register

(Location Name: CHILDRENS HOSPITAL AT WESTMEAD/ BLOCK 5/ LEVEL 1/ PORTABLE GAS STORAGE ROOMS (51LQ011), Child

Locations Included)

(Sort By: Product Name, Filter By: None)

Stock Number	Product Name							Supplier (Emergency Contact)						
	Dangerous Good	UN number	Packing group	C1 / C2 Combustible	Hazchem Code	Status	Container Tracking	Number Of Containers	Container Size	Quantity (Kg/L)			Risk Assessment	SDS Date
										Max	Container	Actual		

Location: CHILDRENS HOSPITAL AT WESTMEAD/ BLOCK 5/ LEVEL 1/ PORTABLE GAS STORAGE ROOMS (51LQ011)/ LABORATORY GAS ROOM (51LQ010)

262G2	ARGON, COMPRESSED							BOC LIMITED (AUSTRALIA) (1800 653 572 (24/7) (Australia only))						
	DG 2.2	UN 1006	-	-	2T	Approved	No	1	10200 Gas Cylinder - Size G		510000 L		Available	13-Sep-2019
37706152	ARGON, COMPRESSED							BOC LIMITED (AUSTRALIA) (1800 653 572 (24/7) (Australia only))						
	DG 2.2	UN 1006	-	-	2T	Approved	No	1	4100 Gas Cylinder - Size E		95348.84 L		Available	13-Sep-2019
4093	BALLOON GAS							BOC LIMITED (AUSTRALIA) (1800 653 572 (24/7) (Australia only))						
	DG 2.2	UN 1046	-	-	2T	Approved	No	1	1400 Gas Cylinder - Size D		14000 L		Available	31-Jan-2020
11902	CARBON DIOXIDE CYLINDER, GAS AND LIQUID WITHDRAWAL							BOC LIMITED (AUSTRALIA) (1800 653 572 (24/7) (Australia only))						
	DG 2.2	UN 1013	-	-	2T	Approved	No	7	31 Kg		217 Kg		Available	17-Nov-2016
2313	HELIUM, COMPRESSED							BOC LIMITED (AUSTRALIA) (1800 653 572 (24/7) (Australia only))						
	DG 2.2	UN 1046	-	-	2T	Approved	No	4	7200 Gas Cylinder - Size G		1440000 L		Available	31-Jan-2020
470G	MEDICAL AIR, COMPRESSED							BOC LIMITED (AUSTRALIA) (1800 653 572 (24/7) (Australia only))						
	DG 2.2	UN 1002	-	-	2T	Approved	No	7	7500 Gas Cylinder - Size G		2625000 L		Available	31-Jan-2020
530E	MEDICAL CARBON DIOXIDE, COMPRESSED, GAS & LIQUID WITHDRAWAL							BOC LIMITED (AUSTRALIA) (1800 653 572 (24/7) (Australia only))						
	DG 2.2	UN 1013	-	-	2RE	Approved	No	1	8000 Gas Cylinder - Size E		186046.5 L		Available	31-Jan-2020
530E	MEDICAL CARBON DIOXIDE, COMPRESSED, GAS & LIQUID WITHDRAWAL							BOC LIMITED (AUSTRALIA) (1800 653 572 (24/7) (Australia only))						
	DG 2.2	UN 1013	-	-	2RE	Approved	No	1	8 Gas Cylinder - Size E		186.05 L		Available	31-Jan-2020

Dangerous Goods Register

(Location Name: CHILDRENS HOSPITAL AT WESTMEAD/ BLOCK 5/ LEVEL 1/ PORTABLE GAS STORAGE ROOMS (51LQ011), Child

Locations Included)

(Sort By: Product Name, Filter By: None)

Stock Number	Product Name							Supplier (Emergency Contact)						
	Dangerous Good	UN number	Packing group	C1 / C2 Combustible	Hazchem Code	Status	Container Tracking	Number Of Containers	Container Size	Quantity (Kg/L)			Risk Assessment	SDS Date
										Max	Container	Actual		
400NG	MEDICAL OXYGEN, COMPRESSED							BOC LIMITED (AUSTRALIA) (1800 653 572 (24/7) (Australia only))						
	DG 2.2 / 5.1	UN 1072	-	-	2S	Approved	No	1	8075 Gas Cylinder - Size G		403750 L		Available	11-Nov-2020
032G	NITROGEN, COMPRESSED							BOC LIMITED (AUSTRALIA) (1800 653 572 (24/7) (Australia only))						
	DG 2.2	UN 1066	-	-	2T	Approved	No	2	9100 Gas Cylinder - Size G		910000 L		Available	11-May-2018
234G2	NITROGEN, COMPRESSED							BOC LIMITED (AUSTRALIA) (1800 653 572 (24/7) (Australia only))						
	DG 2.2	UN 1066	-	-	2T	Approved	No	1	6.7 Gas Cylinder - Size G		335 L		Available	11-May-2018
243039	OXYGEN, COMPRESSED							BOC LIMITED (AUSTRALIA) (1800 653 572 (24/7) (Australia only))						
	DG 2.2 / 5.1	UN 1072	-	-	2S	Approved	No	1	4100 Gas Cylinder - Size E		95348.84 L		Available	24-Oct-2019

Location: CHILDRENS HOSPITAL AT WESTMEAD/ BLOCK 5/ LEVEL 1/ PORTABLE GAS STORAGE ROOMS (51LQ011)/ LICENSED MEDICAL GAS ROOM S4 DRUG

2302	ENTONOX							BOC LIMITED (AUSTRALIA) (1800 653 572 (24/7) (Australia only))						
	DG 2.2 / 5.1	UN 3156	-	-	2S	Restricted	No	2	500 Gas Cylinder - Size C		2777.78 L		Available	01-Nov-2016
610C	MEDICAL NITROUS OXIDE, COMPRESSED							BOC LIMITED (AUSTRALIA) (1800 653 572 (24/7) (Australia only))						
	DG 2.2 / 5.1	UN 1070	-	-	2P	Restricted	No	3	935 Gas Cylinder - Size C		7791.67 L		Available	01-Nov-2016

Location: CHILDRENS HOSPITAL AT WESTMEAD/ BLOCK 5/ LEVEL 1/ PORTABLE GAS STORAGE ROOMS (51LQ011)/ PORTABLE MEDICAL GAS ROOM (51LQ012)

470C	MEDICAL AIR, COMPRESSED							BOC LIMITED (AUSTRALIA) (1800 653 572 (24/7) (Australia only))						
	DG 2.2	UN 1002	-	-	2T	Approved	No	15	0.4 Gas Cylinder - Size C		16.67 L		Available	31-Jan-2020

Dangerous Goods Register

(Location Name: CHILDRENS HOSPITAL AT WESTMEAD/ BLOCK 5/ LEVEL 1/ PORTABLE GAS STORAGE ROOMS (51LQ011), Child

Locations Included)

(Sort By: Product Name, Filter By: None)

Stock Number	Product Name							Supplier (Emergency Contact)						
	Dangerous Good	UN number	Packing group	C1 / C2 Combustible	Hazchem Code	Status	Container Tracking	Number Of Containers	Container Size	Quantity (Kg/L)			Risk Assessment	SDS Date
										Max	Container	Actual		
470C	MEDICAL AIR, COMPRESSED							BOC LIMITED (AUSTRALIA) (1800 653 572 (24/7) (Australia only))						
	DG 2.2	UN 1002	-	-	2T	Approved	No	9	470 Gas Cylinder - Size C		11750 L		Available	31-Jan-2020
470D	MEDICAL AIR, COMPRESSED							BOC LIMITED (AUSTRALIA) (1800 653 572 (24/7) (Australia only))						
	DG 2.2	UN 1002	-	-	2T	Approved	No	10	1520 Gas Cylinder - Size D		152000 L		Available	31-Jan-2020
470D	MEDICAL AIR, COMPRESSED							BOC LIMITED (AUSTRALIA) (1800 653 572 (24/7) (Australia only))						
	DG 2.2	UN 1002	-	-	2T	Approved	No	8	1.5 Gas Cylinder - Size D		120 L		Available	31-Jan-2020
2489	MEDICAL CARBON DIOXIDE, COMPRESSED, GAS & LIQUID WITHDRAWAL							BOC LIMITED (AUSTRALIA) (1800 653 572 (24/7) (Australia only))						
	DG 2.2	UN 1013	-	-	2RE	Approved	No	7	935 Gas Cylinder - Size C		18180.56 L		Available	31-Jan-2020
2489	MEDICAL CARBON DIOXIDE, COMPRESSED, GAS & LIQUID WITHDRAWAL							BOC LIMITED (AUSTRALIA) (1800 653 572 (24/7) (Australia only))						
	DG 2.2	UN 1013	-	-	2RE	Approved	No	1	0.9 Gas Cylinder - Size C		2.5 L		Available	31-Jan-2020
240579	MEDICAL OXYGEN							AIR PRODUCTS PLC (0500 020202 / +44 870 190 6874)						
	DG 2.2 / 5.1	UN 1072	-	-	2S	Approved	No	53	0.4 Gas Cylinder - Size C		58.89 L		Available	06-Nov-2017
400C	MEDICAL OXYGEN, COMPRESSED							BOC LIMITED (AUSTRALIA) (1800 653 572 (24/7) (Australia only))						
	DG 2.2 / 5.1	UN 1072	-	-	2S	Approved	No	27	460 Gas Cylinder - Size C		34500 L		Available	11-Nov-2020
400CD	MEDICAL OXYGEN, COMPRESSED							BOC LIMITED (AUSTRALIA) (1800 653 572 (24/7) (Australia only))						
	DG 2.2 / 5.1	UN 1072	-	-	2S	Approved	No	5	630 Gas Cylinder - Size CD		7560.12 L		Available	11-Nov-2020
400CD	MEDICAL OXYGEN, COMPRESSED							BOC LIMITED (AUSTRALIA) (1800 653 572 (24/7) (Australia only))						

Dangerous Goods Register

(Location Name: CHILDRENS HOSPITAL AT WESTMEAD/ BLOCK 5/ LEVEL 1/ PORTABLE GAS STORAGE ROOMS (51LQ011), Child

Locations Included)

(Sort By: Product Name, Filter By: None)

Stock Number	Product Name							Supplier (Emergency Contact)						
	Dangerous Good	UN number	Packing group	C1 / C2 Combustible	Hazchem Code	Status	Container Tracking	Number Of Containers	Container Size	Quantity (Kg/L)			Risk Assessment	SDS Date
										Max	Container	Actual		
	DG 2.2 / 5.1	UN 1072	-	-	2S	Approved	No	4	0.6 Gas Cylinder - Size CD		5.76 L		Available	11-Nov-2020
241308	MEDICAL OXYGEN, COMPRESSED							BOC LIMITED (AUSTRALIA) (1800 653 572 (24/7) (Australia only))						
	DG 2.2 / 5.1	UN 1072	-	-	2S	Approved	No	17	1630 Gas Cylinder - Size D		277100 L		Available	11-Nov-2020

Location: CHILDRENS HOSPITAL AT WESTMEAD/ BLOCK 5/ LEVEL 1/ PORTABLE GAS STORAGE ROOMS (51LQ011)/ SPECIALISED GAS ROOM (51LQ009)

241964	0-199PPM NITRIC OXIDE IN NITROGEN							AIR LIQUIDE AUSTRALIA LIMITED (1800 800 055, 1800 812 588)						
	DG 2.2	UN 1956	-	-	2TE	Approved	No	6	2100 Gas Cylinder - Size D		126000 L		Available	16-Dec-2016
8004	CARBOGEN							BOC LIMITED (AUSTRALIA) (1800 653 572 (24/7) (Australia only))						
	DG 2.2 / 5.1	UN 3156	-	-	2S	Approved	No	1	1500 Gas Cylinder - Size D		15000 L		Available	08-Jul-2016
11902	CARBON DIOXIDE CYLINDER, GAS AND LIQUID WITHDRAWAL							BOC LIMITED (AUSTRALIA) (1800 653 572 (24/7) (Australia only))						
	DG 2.2	UN 1013	-	-	2T	Approved	No	3	6 Gas Cylinder - Size D		180 L		Available	17-Nov-2016
2302	ENTONOX							BOC LIMITED (AUSTRALIA) (1800 653 572 (24/7) (Australia only))						
	DG 2.2 / 5.1	UN 3156	-	-	2S	Approved	No	1	1600 Gas Cylinder - Size D		16000 L		Available	01-Nov-2016
7527054	INOMAX							IKARIA AUSTRALIA (1300 198 565)						
	DG 2.2	UN 1956	-	-	2TE	Approved	No	7	1963 L		13741 L		Available	11-Nov-2016
7527054	INOMAX							IKARIA AUSTRALIA (1300 198 565)						
	DG 2.2	UN 1956	-	-	2TE	Approved	No	4	353 L		1412 L		Available	11-Nov-2016
240661	NITROGEN, COMPRESSED BP SPECIFICATION							BOC LIMITED (AUSTRALIA) (1800 653 572 (24/7) (Australia only))						
	DG 2.2	UN 1066	-	-	2T	Approved	No	3	1400 Gas Cylinder -		42000 L		-	31-Jan-2020

Dangerous Goods Register

(Location Name: CHILDRENS HOSPITAL AT WESTMEAD/ BLOCK 5/ LEVEL 1/ PORTABLE GAS STORAGE ROOMS (51LQ011), Child
Locations Included)
(Sort By: Product Name, Filter By: None)

Stock Number	Product Name							Supplier (Emergency Contact)						
	Dangerous Good	UN number	Packing group	C1 / C2 Combustible	Hazchem Code	Status	Container Tracking	Number Of Containers	Container Size	Quantity (Kg/L)			Risk Assessment	SDS Date
										Max	Container	Actual		
									Size D					
37710259	VASOKINOX (450PPM NITRIC OXIDE IN NITROGEN)							AIR LIQUIDE HEALTHCARE PTY LIMITED (1800 812 588)						
	DG 2.2	UN 1956	-	-	2TE	Approved	No	6	210 Gas Cylinder - Size D		12600 L		-	10-Nov-2017

Dangerous Goods Register

Appendix

Max Quantity	Max Quantity is calculated by multiplying the Max value of the Stock Inventory Item with the Container Size of the Stock Inventory Item, where the Max value is available.
Container Quantity	Container Quantity is calculated by multiplying the Number of Containers of the Stock Inventory Item with the Container Size of the Stock Inventory Item.
Actual Quantity	Actual Quantity is calculated by adding the available quantities in all the Container Items of a Stock Inventory Item where Individual Container Tracking is switched on, and Container Item is active.

Appendix B

SEARs

Planning Secretary's Environmental Assessment Requirements

Section 4.12(8) of the *Environmental Planning and Assessment Act 1979*
Schedule 2 of the *Environmental Planning and Assessment Regulation 2000*

Application Number	SSD-10349252
Project Name	The Children's Hospital at Westmead – Paediatric Services Building
Location	Corner of Hawkesbury Road and Hainsworth Street, Westmead
Applicant	Health Administration Corporation
Date of Issue	20 November 2020
General Requirements	<p>The Environmental Impact Statement (EIS) must be prepared in accordance with and meet the minimum requirements of clauses 6 and 7 of Schedule 2 the Environmental Planning and Assessment Regulation 2000 (the Regulation).</p> <p>Notwithstanding the key issues specified below, the EIS must include an environmental risk assessment to identify the potential environmental impacts associated with the development.</p> <p>In addition, the EIS must include:</p> <ul style="list-style-type: none"> • an executive summary. • a complete description of the development, including: <ul style="list-style-type: none"> ○ the need for the development. ○ justification for the development. ○ suitability of the site. ○ alternatives considered. ○ likely interactions between the development and existing, approved and proposed operations in the vicinity of the site. ○ a description of any proposed building works. ○ a description of existing and proposed operations. ○ site survey plan, showing existing levels, location and height of existing and adjacent structures / buildings and site boundaries. ○ a detailed constraints map identifying the key environmental and other land use constraints that have informed the final design of the development. ○ plans, elevations and sections of the proposed development. ○ cladding, window and floor details, including materials. ○ a site plan showing all infrastructure and facilities (including any infrastructure that would be required for the development, but the subject of a separate approvals process). ○ plans and details of any advertising/business identification signs to be installed, including size, location and finishes. ○ any staging of the development. ○ details of construction and decommissioning including timing. ○ an estimate of the jobs that would be created during the construction and operational phases of the development along with details of the methodology to determine the figures provided.

	<ul style="list-style-type: none"> • a detailed assessment of the key issues identified below, and any other significant issues identified in the risk assessment, including: <ul style="list-style-type: none"> ○ a description of the existing environment, using sufficient baseline data and methodology to establish baseline conditions. ○ an assessment of the potential impacts of all stages of the development on all potentially impacted environments, sensitive receivers, stakeholders and future developments. The assessment must consider any relevant legislation, policies and guidelines. ○ consideration of the cumulative impacts due to all other developments in the vicinity (completed, underway or proposed). ○ identification of all proposed monitoring or required changes to existing monitoring programs. ○ measures to avoid, minimise and if necessary, offset predicted impacts, including detailed contingency plans for managing any significant risks to the environment and triggers for each action. ○ details of alternative measures considered. • a consolidated summary of all the proposed environmental management and monitoring measures, identifying all commitments included in the EIS. • the reasons why the development should be approved and a detailed evaluation of the merits of the development, including consequences of not carrying out the development. <p>The EIS must be accompanied by a report from a qualified quantity surveyor providing a detailed calculation of the capital investment value (CIV) (as defined in clause 3 of the Regulation) of the proposal, including details of all assumptions and components from which the CIV calculation is derived.</p>
Key Issues	<p>The EIS must address the following specific matters:</p> <p>1. Statutory and Strategic Context</p> <p>Address the statutory provisions contained in all relevant environmental planning instruments, including but not limited to:</p> <ul style="list-style-type: none"> • State Environmental Planning Policy (State and Regional Development) 2011 • State Environmental Planning Policy (Infrastructure) 2007 • State Environmental Planning Policy No. 33 - Hazardous and Offensive Development • State Environmental Planning Policy No 64 – Advertising and Signage • State Environmental Planning Policy No 55 – Remediation of Land • Draft State Environmental Planning Policy (Remediation of Land) • Draft State Environmental Planning Policy (Environment) • Parramatta Local Environmental Plan 2011. <p>Having regard to the relevant environmental planning instruments:</p> <ul style="list-style-type: none"> • address the permissibility of the development, including the nature and extent of any prohibitions. • identify compliance with the development standards applying to the site and provide justification for any contravention of the development standards. • adequately demonstrate and document how each of the provisions in the listed instruments are addressed, including reference to necessary technical documents.

2. Policies

Address the relevant planning provisions, goals and strategic planning objectives in all relevant planning policies including but not limited to the following:

- NSW State Priorities
- State Infrastructure Strategy 2018 – 2038 Building the Momentum
- Future Transport Strategy 2056
- Crime Prevention through Environmental Design (CPTED) Principles
- Better Placed: An integrated design policy for the built environment of New South Wales (Government Architect NSW (GANSW), 2017)
- Healthy Urban Development Checklist (NSW Health, 2009)
- Draft Greener Places Design Guide (GANSW)
- The Greater Sydney Region Plan - A Metropolis of Three Cities
- Sydney's Cycling Future 2013
- Sydney's Walking Future 2013
- Sydney's Bus Future 2013
- Central City District Plan
- Westmead Health Core Master Plan
- Draft Westmead Place Strategy
- Local Strategic Planning Statement City Plan 2036.

3. Built Form and Urban Design

- Address:
 - the height, density, bulk and scale, setbacks and interface of the proposal in relation to the surrounding development, topography, streetscape and any public open spaces.
 - design quality and built form, with specific consideration of the overall site layout, streetscape, open spaces, façade, rooftop, massing, setbacks, building articulation, materials and colours.
 - how Crime Prevention through Environmental Design (CPTED) principles are to be integrated into development.
 - how good environmental amenity would be provided, including access to natural daylight and ventilation, acoustic separation, access to landscape and outdoor spaces and future flexibility.
 - how services, including but not limited to waste management, loading zones, and mechanical plant are integrated into the design of the development.
- Provide:
 - a detailed site and context analysis to justify the proposed site planning and design approach including massing options and preferred strategy for future development.
 - a visual impact assessment that identifies any potential impacts on the surrounding built environment and landscape including views to and from the site and any adjoining heritage items.

4. Tree Removal and Landscaping

- Provide:
 - an arboricultural impact assessment, prepared by a Level 5 (Australian Qualifications Framework) Arborist in accordance with the Australian Standard 4970 Protection of trees on development sites (AS 4970), which

	<p>details the number, location and condition of trees to be removed and retained and existing canopy coverage on-site.</p> <ul style="list-style-type: none"> ○ a detailed site-wide landscape strategy, that: <ul style="list-style-type: none"> ▪ details the proposed site planting, including location, number and species of plantings, heights of trees at maturity and proposed canopy coverage. ▪ considers equity and amenity of outdoor spaces, and integration with built form, security, shade, topography and existing vegetation. ▪ demonstrates how the proposed development would: <ul style="list-style-type: none"> – contribute to long term landscape setting in respect of the site and the streetscape. – mitigate the urban heat island effect and ensure appropriate comfort levels on-site. – contribute to objectives to increase urban tree canopy cover. ○ a detailed landscape plan prepared by a suitably qualified person. <p><u>Relevant Policies and Guidelines:</u></p> <ul style="list-style-type: none"> • Draft Greener Places Design Guide (GANSW) • Objective 30 of The Greater Sydney Region Plan - A Metropolis of Three Cities • Technical Guidelines for Urban Green Cover in NSW (Office of Environment and Heritage (OEH), 2015). <p>5. Environmental Amenity</p> <ul style="list-style-type: none"> • Assess amenity impacts on the surrounding locality, including solar access, visual privacy, visual amenity, overshadowing, wind impacts and acoustic impacts. A high level of environmental amenity for any surrounding residential land uses must be demonstrated. • Provide: <ul style="list-style-type: none"> ○ shadow diagrams. ○ a view analysis of the site from key vantage points and streetscape locations and public domain including photomontages or perspectives showing the proposed and likely future development. ○ an analysis of proposed lighting that identifies measures to reduce spill into the surrounding sensitive receivers. ○ details of the nature and extent of any intensification of use associated with the proposed development, particularly in relation to any increase in staff and inpatient bed numbers and detail measures to manage and mitigate any impacts. ○ a wind impact assessment, including a wind tunnel study, prepared by a suitably qualified person that considers the impact of the proposed development having regard to the surrounding development and pedestrian amenity and comfort. <p>6. Transport and Accessibility</p> <p>Include a transport and accessibility impact assessment, which includes, but is not limited to the following:</p> <ul style="list-style-type: none"> • analysis of the existing transport network, including: <ul style="list-style-type: none"> ○ road hierarchy. ○ pedestrian, cycle and public transport infrastructure.
--	--

	<ul style="list-style-type: none"> ○ details of current daily and peak hour vehicle movements based on traffic surveys and / or existing traffic studies relevant to the locality. ○ existing performance levels of nearby intersections utilising appropriate traffic modelling methods (such as SIDRA network modelling). • details of the proposed development, including: <ul style="list-style-type: none"> ○ a map of the proposed access which identifies public roads, bus routes, footpaths and cycleways. ○ vehicular access arrangements, including for service and emergency vehicles and loading/unloading, including swept path analysis demonstrating the largest design vehicle entering and leaving the site and moving in each direction through intersections along the proposed transport routes. ○ car parking, bicycle parking and end-of-trip facilities. ○ drop-off / pick-up zone(s)/arrangements. ○ pedestrian or road infrastructure improvements or safety measures. • analysis of the impacts due to the operation of the proposed development, including: <ul style="list-style-type: none"> ○ proposed modal split for all users of the development including vehicle, pedestrian, cyclist, public transport and other sustainable travel modes. ○ estimated total daily and peak hour vehicular trip generation. ○ a clear explanation and justification of the: <ul style="list-style-type: none"> ▪ assumed growth rate applied. ▪ volume and distribution of proposed trips to be generated. ▪ type and frequency of design vehicles accessing the site. ○ details of performance of nearby intersections with the additional traffic generated by the development both at the commencement of operation and in a 10-year time period (using SIDRA network modelling). ○ cumulative traffic impacts from any surrounding approved development(s). ○ adequacy of pedestrian, bicycle and public transport infrastructure to accommodate the development. ○ adequacy of car parking and bicycle parking provisions when assessed against the relevant car / bicycle parking codes and standards. ○ adequacy of the drop-off / pick-up zone(s), including assessment of any related queuing during peak-hour access. ○ adequacy of the existing / proposed pedestrian infrastructure to enable convenient and safe access to and from the site for all users. • measures to ameliorate any adverse traffic and transport impacts due to the development based on the above analysis, including: <ul style="list-style-type: none"> ○ travel demand management measures to encourage sustainable transport (such as a Green Travel Plan and / or specific Workplace Travel Plan). ○ infrastructure improvements, including details of timing and method of delivery. • a preliminary operational traffic and access management plan. • analysis of the impacts of the traffic generated during construction of the proposed development, including: <ul style="list-style-type: none"> ○ construction vehicle routes, types and volumes. ○ construction program (duration and milestones). ○ on-site car parking and access arrangements for construction, emergency and construction worker vehicles.
--	---

- cumulative impacts associated with other construction activities in the locality (if any).
- road safety at identified intersections near the site due to conflicts between construction vehicles and existing traffic in the locality.
- measures to mitigate impacts, including to ensure the safety of pedestrian and cyclists during construction.

- a preliminary Construction Traffic and Pedestrian Management Plan.

Note: Further guidance is provided in the TfNSW advice attached to the SEARs.

Relevant Policies and Guidelines:

- Guide to Traffic Generating Developments (Roads and Maritime Services, 2002)
- EIS Guidelines - Road and Related Facilities (Department of Urban Affairs and Planning (DUAP), 1996)
- Cycling Aspects of Austroads Guides
- NSW Planning Guidelines for Walking and Cycling (Department of Infrastructure, Planning and Natural Resources (DIPNR), 2004)
- Guide to Traffic Management Part 12: Integrated Transport Assessments for Developments (Austroads, 2020)
- Australian Standard 2890.3 Parking facilities, Part 3: Bicycle parking (AS 2890.3).

7. Ecologically Sustainable Development (ESD)

- Detail:
 - how ESD principles (as defined in clause 7(4) of Schedule 2 of the Regulation) would be incorporated in the design and ongoing operation phases of the development.
 - proposed measures to minimise consumption of resources, water (including water sensitive urban design) and energy.
 - how the future development would be designed to consider and reflect national best practice sustainable building principles to improve environmental performance and reduce ecological impact. This should be based on a materiality assessment and include waste reduction design measures, future proofing, use of sustainable and low-carbon materials, energy and water efficient design (including water sensitive urban design) and technology and use of renewable energy.
- Include:
 - an assessment against an accredited ESD rating system or an equivalent program of ESD performance. This should include a minimum rating scheme target level.
 - a statement regarding how the design of the future development is responsive to the CSIRO projected impacts of climate change.
 - an Integrated Water Management Plan detailing any proposed alternative water supplies, proposed end uses of potable and non-potable water, and water sensitive urban design.

Relevant Policies and Guidelines:

- NSW and ACT Government Regional Climate Modelling (NARClIM) climate change projections.

8. Heritage

- Provide a Statement of Heritage Impact (SOHI) prepared by a suitably qualified heritage consultant in accordance with the guidelines in the NSW Heritage Manual (Heritage Office and DUAP, 1996) and Assessing Heritage Significance (OEH, 2015). The SOHI is to address the impacts of the proposal on the heritage significance of the site and adjacent areas and is to identify:
 - all heritage items (national, state and local) within the vicinity of the site including built heritage, landscapes and archaeology, detailed mapping of these items, and assessment of why the items and site(s) are of heritage significance.
 - compliance with the relevant Conservation Management Plan.
 - the impacts of the proposal on heritage item(s) including visual impacts (including reflectivity and use of materials, and specific consideration to the bulk, height and scale heights of buildings), required BCA and DDA works, new fixtures, fittings and finishes, any modified services.
 - include a view and visual assessment to illustrate how the proposal impacts on the wider visual setting of the site including on the adjacent heritage items.
 - the attempts to avoid and/or mitigate the impact on the heritage significance or cultural heritage values of the site and the surrounding heritage items.
 - justification for any changes to the heritage fabric or landscape elements including any options analysis.
- If the SOHI identifies impact on potential historical archaeology, an historical archaeological assessment should be prepared by a suitably qualified archaeologist in accordance with the Archaeological Assessment Guidelines (NSW Heritage Office, 1996) and Assessing Significance for Historical Archaeological Sites and 'Relics' (Heritage Council of NSW, 2009). This assessment should identify what relics, if any, are likely to be present, assess their significance and consider the impacts from the proposal on this potential archaeological resource. Where harm is likely to occur, it is recommended that the significance of the relics be considered in determining an appropriate mitigation strategy. If harm cannot be avoided in whole or part, an appropriate Research Design and Excavation Methodology should also be prepared to guide any proposed excavations or salvage programme.

9. Aboriginal Cultural Heritage

- Provide an Aboriginal Cultural Heritage Assessment Report (ACHAR) that:
 - identifies and describes the Aboriginal cultural heritage values that exist across the site.
 - includes surface surveys and test excavations where necessary.
 - has been prepared in accordance with the Guide to investigating, assessing and reporting on Aboriginal Cultural Heritage in NSW (OEH, 2011) and Code of Practice for Archaeological Investigations of Aboriginal Objects in NSW (OEH, 2010).
 - incorporates consultation with Aboriginal people in accordance with Aboriginal Cultural Heritage Consultation Requirements for Proponents (Department of Environment, Climate Change and Water, 2010).
 - documents the significance of cultural heritage values of Aboriginal people who have a cultural association with the land.

	<ul style="list-style-type: none"> ○ identifies, assesses and documents all impacts on the Aboriginal cultural heritage values. ○ demonstrates attempts to avoid any impact upon cultural heritage values and identify any conservation outcomes. Where impacts are unavoidable, the ACHAR and EIS must outline measures proposed to mitigate impacts. Any objects recorded as part of the assessment must be documented and notified to the Environment, Energy and Science Group of the Department of Planning, Industry and Environment. • Any Aboriginal objects recorded as part of the Aboriginal Cultural Heritage Assessment must be documented and notified to the Aboriginal Heritage Information Management System (AHIMS) within Heritage NSW of the Department of Premier and Cabinet. <p>10. Social Impacts</p> <ul style="list-style-type: none"> • Provide a Social Impact Assessment prepared in accordance with the draft Social Impact Assessment Guideline 2020. <p><u>Relevant Policies and Guidelines:</u></p> <ul style="list-style-type: none"> • draft Social Impact Assessment Guideline 2020 (Department of Planning, Industry and Environment) <p>11. Noise and Vibration</p> <ul style="list-style-type: none"> • Provide a noise and vibration impact assessment that: <ul style="list-style-type: none"> ○ includes a quantitative assessment of the main noise and vibration generating sources during demolition, site preparation, bulk excavation and construction. ○ details the proposed construction hours and provide details of, and justification for, instances where it is expected that works would be carried out outside standard construction hours. ○ includes a quantitative assessment of the main sources of operational noise, including consideration of any mechanical services (e.g. air conditioning plant). ○ outlines measures to minimise and mitigate the potential noise impacts on nearby sensitive receivers. ○ considers sources of external noise intrusion in proximity to the site (including, road rail and aviation operations) and identifies building performance requirements for the proposed development to achieve appropriate internal amenity standards. ○ demonstrates that the assessment has been prepared in accordance with policies and guidelines relevant to the context of the site and the nature of the proposed development. <p><u>Relevant Policies and Guidelines:</u></p> <ul style="list-style-type: none"> • NSW Noise Policy for Industry 2017 (NSW Environment Protection Authority (EPA)) • Interim Construction Noise Guideline (Department of Environment and Climate Change, 2009) • Assessing Vibration: A Technical Guideline 2006 (Department of Environment and Conservation, 2006) • Australian Standard 2363 Acoustics - Measurement of noise from helicopter operations (AS 2363).
--	--

12. Biodiversity

- Provide a Biodiversity Development Assessment Report (BDAR), prepared by a person accredited in accordance with section 6.10 of the *Biodiversity Conservation Act 2016* that assesses the biodiversity impacts of the proposed development in accordance with the requirements of the *Biodiversity Conservation Act 2016*, *Biodiversity Conservation Regulation 2017* and Biodiversity Assessment Method, except where a BDAR waiver has been issued in relation to the development or the development is located on biodiversity certified land.
- Where a BDAR is not required because a BDAR waiver has been issued in relation to the development, provide:
 - a copy of the BDAR waiver and demonstrate that the proposed development is consistent with that covered in BDAR waiver.
 - an assessment of flora and fauna impacts where significant vegetation or flora and fauna values would be affected by the proposed development.

Note: Further guidance is provided in the Biodiversity and Conservation Division Standard Environmental Assessment Requirements attached to the SEARs.

13. Contributions

- Identify:
 - any Section 7.11/7.12 Contribution Plans, Voluntary Planning Agreements or Special Infrastructure Contribution Plans that affect land to which the application relates or the proposed development type.
 - any contributions applicable to the proposed development under the identified plans and/or agreements. Justification is to be provided where it is considered that the proposed development is exempt from making a contribution.
 - any actions required by a Voluntary Planning Agreement or draft Voluntary Planning Agreement affecting the site or amendments required to a Voluntary Planning Agreement affected by the proposed development.

14. Staging

- Assess impacts of staging where it is proposed and detail how construction works and operations would be managed to ensure public safety and amenity on and surrounding the site.

15. Utilities

- In consultation with relevant service providers:
 - assess of the impacts of the development on existing utility infrastructure and service provider assets surrounding the site.
 - identify any infrastructure upgrades required on-site and off-site to facilitate the development and any arrangements to ensure that the upgrades will be implemented on time and be maintained.
 - provide an infrastructure delivery and staging plan, including a description of how infrastructure requirements would be co-ordinated, funded and delivered to facilitate the development.

16. Stormwater Drainage

- Provide:
 - a preliminary stormwater management plan for the development that:

	<ul style="list-style-type: none"> ▪ is prepared by a suitably qualified person in consultation with Council and any other relevant drainage authority. ▪ details the proposed drainage design for the site including on-site detention facilities, water quality measures and the nominated discharge point. ▪ demonstrates compliance with Council or other drainage authority requirements. ○ stormwater plans detailing the proposed methods of drainage without impacting on the downstream properties. • Where drainage infrastructure works are required that would be handed over to Council, provide full hydraulic details and detailed plans and specifications of proposed works that have been prepared in consultation with Council and comply with Council's relevant standards. <p><u>Relevant Policies and Guidelines:</u></p> <ul style="list-style-type: none"> • Guidelines for developments adjoining land managed by the Office of Environment and Heritage (OEH, 2013). <p>17. Flooding</p> <ul style="list-style-type: none"> • Identify any flood risk on-site in consultation with Council and having regard to the most recent flood studies for the project area and the potential effects of climate change, sea level rise and an increase in rainfall intensity. • Assess the impacts of the development, including any changes to flood risk on-site or off-site, the 1 in 10 year, 1 in 100 year flood levels and the probable maximum flood, or an equivalent extreme event and detail design solutions to mitigate flood risk where required. • Include details of the developments flood risk emergency management, contingency measures, evacuation and access arrangements. <p><u>Relevant Policies and Guidelines:</u></p> <ul style="list-style-type: none"> • NSW Floodplain Development Manual (NSW Government, 2005). <p>18. Soil and Water</p> <ul style="list-style-type: none"> • Provide: <ul style="list-style-type: none"> ○ an assessment of potential impacts on surface and groundwater (quality and quantity), soil, hydrology, related infrastructure, groundwater dependent ecosystems, adjacent licensed water users, riparian land and watercourse(s) where relevant. ○ details of measures and procedures to minimise and manage the generation and off-site transmission of sediment, dust and fine particles. ○ an assessment of salinity and acid sulphate soil impacts, including a Salinity Management Plan and/or Acid Sulphate Soils Management Plan, where relevant. <p><u>Relevant Policies and Guidelines:</u></p> <ul style="list-style-type: none"> • Managing Urban Stormwater - Soils and Construction Volume 1 (Landcom, 2004) • Guidelines for development adjoining land managed by the Office of Environment and Heritage (OEH, 2013). <p>19. Waste</p>
--	---

	<ul style="list-style-type: none"> Identify, quantify and classify the likely waste streams to be generated during construction and operation. Describe the measures to be implemented to manage, reuse, recycle and safely dispose of this waste. Identify appropriate servicing arrangements (including but not limited to, waste management, loading zones, mechanical plant) for the site. Provide a hazardous materials survey of existing aboveground buildings that are proposed to be demolished or altered. <p><u>Relevant Policies and Guidelines:</u></p> <ul style="list-style-type: none"> Waste Classification Guidelines (EPA, 2014). <p>20. Contamination</p> <ul style="list-style-type: none"> Assess and quantify any soil and groundwater contamination and demonstrate that the site is suitable for the proposed use in accordance with SEPP 55. This must include the following prepared by certified consultants recognised by the NSW Environment Protection Authority: <ul style="list-style-type: none"> Preliminary Site Investigation (PSI). Detailed Site Investigation (DSI) where recommended in the PSI. Remediation Action Plan (RAP) where remediation is required. This must specify the proposed remediation strategy. Preliminary Long-term Environmental Management Plan (LEMP) where containment is proposed on-site. <p><u>Relevant Policies and Guidelines:</u></p> <ul style="list-style-type: none"> Managing Land Contamination: Planning Guidelines - SEPP 55 Remediation of Land (DUAP, 1998) Sampling Design Guidelines (EPA, 1995) Guidelines for Consultants Reporting on Contaminated Sites (OEH, 2011) National Environment Protection (Assessment of Site Contamination) Measure (National Environment Protection Council, as amended 2013). <p>21. Hazards and Risk</p> <ul style="list-style-type: none"> Provide: <ul style="list-style-type: none"> a preliminary risk screening indicating class (and any subsidiary hazard), quantity and location of all dangerous goods and hazardous materials associated with the development. a Preliminary Hazard Analysis be prepared if the preliminary risk screening indicates that the development is "potentially hazardous". <p><u>Relevant Policies and Guidelines</u></p> <ul style="list-style-type: none"> State Environmental Planning Policy No. 33 – Hazardous and Offensive Development Applying SEPP 33: Hazardous and Offensive Development Application Guidelines Hazardous Industry Planning Advisory Paper No. 6 Multi-Level Risk Assessment.
Plans and Documents	<p>The EIS must include all relevant plans, architectural drawings, diagrams and relevant documentation required under Schedule 1 of the Regulation. Provide these as part of the EIS rather than as separate documents. Any plans and</p>

	<p>diagrams included in the EIS must include key dimensions, RLs, scale bar and north point.</p> <p>In addition to the plans and documents required in the General Requirements and Key Issues sections above, the EIS must include the following:</p> <ul style="list-style-type: none"> • Section 10.7(2) and (5) Planning Certificates (previously Section 149(2) and (5) Planning Certificate) • Design report to demonstrate how design quality would be achieved in accordance with the above Key Issues including: <ul style="list-style-type: none"> ○ architectural design statement ○ diagrams, structure plan, illustrations and drawings to clarify the design intent of the proposal ○ detailed site and context analysis ○ analysis of options considered to justify the proposed site planning and design approach ○ summary of feedback provided by GANSW and NSW State Design Review Panel (SDRP) and responses to this advice ○ summary report of consultation with the community and response to any feedback provided. • Geotechnical and Structural Report • Accessibility Report.
Consultation	<p>During the preparation of the EIS, you must consult with the relevant local, State or Commonwealth Government authorities, service providers, community groups, relevant special interest groups, including local Aboriginal land councils and registered Aboriginal stakeholders and affected landowners. In particular, you must consult with:</p> <ul style="list-style-type: none"> • the relevant Council • Government Architect NSW (through the NSW SDRP process) • Transport for NSW. <p>Consultation should commence as soon as practicable to inform the scope of investigation and progression of the proposed development.</p> <p>The EIS must describe and evidence the consultation process and the issues raised and identify where the design of the development has been amended in response to these issues. Where amendments have not been made to address an issue, a short explanation should be provided.</p> <p>Targeted consultation in accordance with the draft Social Impact Assessment Guideline 2020 (Department of Planning, Industry and Environment) must also occur where there is a requirement to prepare and submit a Social Impact Assessment.</p>
Further consultation after 2 years	<p>If you do not lodge a development application and EIS for the development within two years of the issue date of these SEARs, you must consult further with the Planning Secretary in relation to the preparation of the EIS.</p>
References	<p>The assessment of the key issues listed above must consider, but not be limited to, relevant guidelines, policies, and plans as identified.</p>