



Children's Hospital Westmead Stage 2
Paediatric Services Building - Heritage Impact Assessment

B | FINAL
20 January 2021

Health Infrastructure NSW
IS320600

Document history and status

Revision	Date	Description	Author	Checked	Reviewed	Approved
A	16.12.2020	Draft Statement of Heritage Impact for client review	Deborah Farina	Clare Leever	Fran Scully	Fran Scully
B	20.01.2021	Final Statement of Heritage Impact for client review	Alexandra Seifertova	Clare Leever	Fran Scully	Fran Scully

Distribution of copies

Revision	Issue approved	Date issued	Issued to	Comments

Children's Hospital Westmead Stage 2

Project No: IS320600
Document Title: Paediatric Services Building - Heritage Impact Assessment
Document No.: B
Revision: FINAL
Document Status: DRAFT
Date: 20 January 2021
Client Name: Health Infrastructure NSW
Client No: IS320600
Project Manager: Clare Leever
Author: Deborah Farina
File Name: IS320600 CHW PSB SoHI DRAFT B_Final.docx

Jacobs Group (Australia) Pty Limited
ABN 37 001 024 095
Level 7, 177 Pacific Highway
North Sydney NSW 2060 Australia
PO Box 632 North Sydney
NSW 2059 Australia
T +61 2 9928 2100
F +61 2 9928 2444
www.jacobs.com

© Copyright 2021 Jacobs Group (Australia) Pty Limited. The concepts and information contained in this document are the property of Jacobs. Use or copying of this document in whole or in part without the written permission of Jacobs constitutes an infringement of copyright.

Limitation: This document has been prepared on behalf of, and for the exclusive use of Jacobs' client, and is subject to, and issued in accordance with, the provisions of the contract between Jacobs and the client. Jacobs accepts no liability or responsibility whatsoever for, or in respect of, any use of, or reliance upon, this document by any third party.

Contents

1.	Introduction.....	2
1.1	Study area	2
1.2	The Proposal.....	2
1.3	Secretary's Environmental Assessment Requirements.....	2
1.4	Report Structure.....	4
1.5	Authorship and Acknowledgement	4
1.6	Assumptions and Limitations.....	4
2.	Legislative context.....	6
2.1	Federal Legislation	6
2.2	State legislation.....	6
3.	Methodology.....	9
3.1	Methodology	9
4.	Historical context.....	10
4.1	Brief chronology of land use in the study area	10
4.1	Development of study area - Introduction	10
4.2	Government Domain 1788-1856.....	11
4.3	Cumberland Hospital	14
4.4	Non-Aboriginal heritage database searches.....	18
4.5	Archaeological Potential.....	21
4.6	Literature review.....	23
4.7	Summary	25
5.	Site visit.....	26
5.1	Timing and personnel.....	26
5.2	General physical context.....	26
5.3	PSB.....	26
5.4	KIDSPARK.....	26
5.5	Results.....	27
6.	Significance Assessment.....	28
6.1	Introduction	28
6.2	Assessments of Heritage Significance	29
7.	Impact Assessment	38
7.1	Heritage potentially impacted.....	38
7.2	Potential impacts	38
7.3	Visual impact to Cumberland East.....	38
7.4	Visual impact to Glengariff House/Wisteria House/Wisteria Gardens.....	39
7.5	Impact on Potential Archaeological Deposits	41
7.6	Summary	44
8.	Conclusions and recommendations	46

Appendix A. Plans50

Figures

Figure 1-1: Study area	5
Figure 4-1: 1943 aerial photograph of study area and environs, with approximate locations of PSB and KIDSPARK (labelled as Forecourt in figure) (Courtesy: Six Maps).	11
Figure 4-2: "View at Rose Hill, Port Jackson" c. 1791 (Courtesy: State Library of New South Wales, Call No. DG SV1A/24).	12
Figure 4-3: Detail of "Plan of the settlement of Parramatta made by Governor Hunter, 20 August, 1796, much enlarged", showing "land in cultivation". The approximate location of the study area is marked in red (Courtesy: State Library of New South Wales, File FL3688860).	12
Figure 4-4: 'Views of Sydney and Parramatta', by Charles Rodius, c. 1799 depicting Old Government House and the Government Domain. The cattle crossing the bridge is the approximate location of Bridge Road (Courtesy: State Library of New South Wales, Call No. 1833PXA 997).	13
Figure 4-5: Southern elevation of Government House, looking north (Jacobs, 2020).	14
Figure 4-6: Detail of Charles Smith's grant, Serial 1 page 48 of Land Grants 1792-1794 (Courtesy: Historical Land Records Viewer).	15
Figure 4-7: Layout of Cumberland Hospital in 1996 with the location of Marsden's Mill, the mill race, the original female factory building and other items (Higginbotham, 1996:5).	17
Figure 4-8: Built heritage items within the vicinity of the study area	20
Figure 4-9: AMU 3070.....	22
Figure 5-1: Location of PSB, looking south. CASB is at right (Source: Jacobs, 2020).	26
Figure 5-2: Proposed location of new forecourt, looking north towards the main entrance of CHW (Source: Jacobs, 2020).	27
Figure 5-3: Proposed location of new forecourt, looking south (Source: Jacobs, 2020).	27
Figure 7-1: Photomontage of view of PSB from Cumberland East (Courtesy: Billard Leece Partnerships Pty Ltd).	39
Figure 7-2: PSB (left) in comparison with CASB (right) (see Appendix 1: Elevation Plan).	40
Figure 7-3: CMC Colours.....	40
Figure 7-4: Porcelain tile colours.....	40
Figure 7-5: Framing colours.....	40
Figure 7-6: Photomontage looking towards the existing CASB (grey) and the proposed PSB (white) from Glengariff. The low, white buildings in the middle foreground belong to a works compound (Courtesy: Billard Leece Partnership Pty Ltd).	41
Figure 7-7: Detail of 1930 Aerial of study area, with approximate location of PSB and KIDSPARK circled (Courtesy: Historical Imagery Viewer).	42
Figure 7-8: Detail of 1943 aerial showing approximate location of PSB and KIDSPARK (Courtesy: Historical Imagery Viewer)	42
Figure 7-9: Details of 1986 aerial showing approximate location of PSB and KIDSPARK (Courtesy: Historical Imagery Viewer)	43
Figure 7-10: Detail of 1991 aerial during construction of the CHW, showing approximate location of PSB and KIDSPARK (Courtesy: Historical Imagery Viewer).....	43
Figure 7-11: Detail of aerial following construction of CHW, showing locations of PSB and KIDSPARK (Courtesy: Historical Imagery Viewer).....	44

Tables

Table 1-1: SEARs – Non-Aboriginal Heritage.....	3
Table 1-2: Structure of report	4
Table 4-1: Chronology of land use	10
Table 4-2: National and World heritage items	18

Table 4-3: Items on the RNE (non-statutory)	18
Table 4-4: Items of State heritage significance.....	18
Table 4-5: Items of local heritage significance.....	19
Table 6-1: NSW Significance assessment criteria	28
Table 6-2: Gradings of heritage significance.....	29
Table 6-3: Gradings of Elements of Wisteria Gardens Precinct	36
Table 7-1: Summary of impacts	44
Table 7-2: Impacts by aspects of the proposal.....	45

Executive Summary

Jacobs Group (Australia) Pty Ltd (Jacobs) was commissioned by Health Infrastructure NSW (the proponent) to provide a Statement of Heritage Impact (SoHI) ahead of the construction of the proposed Paediatric Services Building (PSB) for the Stage 2 redevelopment works associated with the Children's Hospital, Westmead (CHW). This proposal is State Significant Development (SSD) pursuant to the *Environmental Planning & Assessment Act 1979*. This report fulfils one of the requirements of the Secretary's Environmental Assessment Requirements (SEARs) for heritage.

The CHW is located at Westmead, approximately 21 kilometres west of Sydney. The CHW is adjacent to the Westmead Hospital, and near Toongabbie Creek. The site of the PSB is to the south of the existing children's hospital building, on the site of a five-level car park.

The works associated with this proposal include the construction of a new Paediatric Services Building (PSB) to be located adjacent to the Central Acute Services Building (CASB), and on the site of the decommissioned P17 car park, including development of the Hawkesbury Road forecourt and access links. The PSB is proposed to be 15 levels, with a helipad on its roof.

Searches of National, State and local heritage databases were undertaken. No heritage items were identified within the footprint of the PSB. However, the PSB is within the Parramatta Archaeological Management Unit 3070 (AMU 3070). The study area is also in close proximity to the Glengariff/Wisteria Gardens precinct of the Cumberland District Hospital Group. The World, National, State and local heritage-listed Old Government House and Government Domain shares a boundary with Glengariff/Wisteria Gardens precinct.

Overall, the Cumberland District Hospital Group is of State and local heritage significance. A portion of the Cumberland East Precinct is also of National heritage significance. Glengariff/Wisteria Gardens is of State heritage significance. AMU 3070 is assessed as being of moderate archaeological potential, but of local heritage significance.

It is considered unlikely that the proposal will cause any adverse impact to the Old Government House and Government Domain, the Cumberland East precinct of the Cumberland District Hospital Group or AMU 3070. There is also no adverse physical impact identified for the Glengariff/Wisteria Gardens precinct. The PSB works are of sufficient distance to negate any adverse impacts through vibration. However, owing to the location of the PSB on a high ridge near the lower-lying Glengariff/Wisteria Gardens, and the bulk, scale and materials of the PSB and its combined impact with the adjacent CASB, it is concluded that there is a low-moderate visual impact. However, given the distance between the PSB and Glengariff/Wisteria Gardens, it is considered that this impact can be mitigated or removed entirely with the planting of appropriate trees along the western boundary of the Glengariff/Wisteria Gardens precinct. Once mature, these trees should obscure the visual impact of the PSB/CASB.

To protect existing heritage values, the following mitigation and management measures are recommended.

Recommendation 1

It is recommended that, as soon as practicable, suitable trees be planted along the western boundary of Wisteria Gardens in order to mitigate the visual impact of the PSB. The type of trees planted should be in keeping with the existing significant plantings of the Wisteria Gardens and in keeping with the latest version of the CMP for the Cumberland District Hospital Group.

Recommendation 2

Although considered unlikely, should archaeological material be identified during construction/excavation for the PSB, all works in the area should stop, the area cordoned off and a qualified archaeologist be contacted to assess the significance of the archaeological material. Works should not recommence in that area until a management plan for the deposits is completed.

Recommendation 3

The advice and conclusions of this SoHI have been based on a scope of works and plans dated 16 December 2020. Owing to the proximity of the PSB to the National and State heritage listed Cumberland East precinct, should any substantial change to the design of the PSB be contemplated, this SoHI should be revised to incorporate those changes in design.

Acronyms, Abbreviations and Glossary

Acronym/term	Meaning
AHD	Australian Heritage Database
AMP	Archaeological Management Plan
AMU	Archaeological Management Unit
Burra Charter	<i>Australia ICOMOS Charter for the Conservation of Places of Cultural Significance 2013 (adopted at Burra, South Australia in 1979)</i>
CBD	Central business district
CHL	Commonwealth Heritage List
CHW	Children's Hospital, Westmead
CMP	Conservation Management Plan
DPC Heritage	Department of Premier & Cabinet (Heritage)
EP&A Act	<i>Environmental Planning & Assessment Act 1979</i>
EPBC Act	<i>Environmental Protection and Biodiversity Conservation Act 1999</i>
HIA	Heritage Impact Assessment
ICOMOS	International Council on Monuments and Sites
Jacobs	Jacobs Group (Australia) Pty Ltd
LEP	Local Environmental Plan
LGA	Local Government Area
NHL	National Heritage List
PSB	Paediatric Services Building
RNE	Register of National Estate
Section 170 Register	Heritage register kept by State government departments and authorities under s170 of the <i>Heritage Act 1977</i>
SHI	State Heritage Inventory
SHR	State Heritage Register
SoHI	Statement of Heritage Impact
WHL	World Heritage List

1. Introduction

Jacobs Group (Australia) Pty Ltd (Jacobs) was commissioned by Health Infrastructure NSW (the proponent) to provide non-Aboriginal heritage advice ahead of the construction of the proposed Paediatric Services Building (PSB) for the Stage 2 redevelopment works associated with the Children's Hospital, Westmead (CHW). This proposal is State Significant Development (SSD) pursuant to the *Environmental Planning & Assessment Act 1979*.

1.1 Study area

The CHW is located at Westmead, approximately 21 kilometres west of Sydney. The CHW is adjacent to the Westmead Hospital, and near Toongabbie Creek.

This assessment will focus on the Paediatric Services Building (PSB), located on the western side of Hawkesbury Road, within the CHW complex (see Figure 1-1).

1.2 The Proposal

1.2.1 Project Objectives

The objective of the Children's Hospital at Westmead (CHW) Stage 2 Redevelopment is to enable the expansion and replacement of paediatric and neonatal intensive care services, operating theatres, cancer services, acute inpatient beds and associated support services, in order to further the Sydney Children's Hospitals Network purpose of "helping children and young people live their healthiest lives".

1.2.2 Scope of Works

This proposal comprises a new Paediatric Services Building (PSB) to be located adjacent to the Central Acute Services Building (CASB), and on the site of the decommissioned P17 car park, including development of the Hawkesbury Road forecourt and access links. This includes works associated with KIDSPARK on Hawkesbury Road to provide improved community amenity in the form of a new front entry, improved street frontage and enable a more cohesive main entrance connecting existing CHW, adjoining research facilities, and the PSB.

The scope of proposed works includes:

- Construction of the main PSB:
 - The main PSB may contain the following uses: perioperative and interventional services, neonatal and paediatric intensive care units, cancer centre, acute inpatient beds, back of house and parent facilities; and
 - Alterations and additions to existing CHW KR and CASB buildings adjoining PSB site area to accommodate floor realignment and movement corridors.
- Construction of a new pedestrian canopy link through KR, connecting the main PSB with the KIDSPARK and existing hospital entrance;
- The canopy link is to be lifted 2 storeys above the KIDSPARK;
- A new ground plane / forecourt landscaped area extending from Hawkesbury Road to the proposed PSB; and
- Tree removal to accommodate the construction of the PSB.

1.3 Secretary's Environmental Assessment Requirements

The proposal is State Significant Development (SSD) pursuant to the *Environmental Planning & Assessment Act 1979*. On 20 November 2020 the Secretary's Environmental Assessment Requirements (SEARs) for this project

were released, with the following requirements for non-Aboriginal heritage. This report has addressed those requirements in the following sections.

Table 1-1: SEARs – Non-Aboriginal Heritage

SEARs	Section addressed
Provide a Statement of Heritage Impact (SoHI) prepared by a suitably qualified heritage consultant in accordance with the NSW Heritage Manual	This SoHI has been prepared by Deborah Farina (BA Archaeology & Paleoanthropology, LLB, M.Hist., M.AACAI).
The SoHI is to address the impacts of the Proposal on the heritage significance of the site and adjacent areas	Section 6
Identify all heritage items (national, State and local) within the vicinity of the site including built heritage, landscapes and archaeology, detailed mapping of these items and assessment of why the items and site(s) are of heritage significance	Sections 3, 4 and 5
Identify compliance with the relevant Conservation Management Plan	Section 6
Identify the impacts of the Proposal on heritage item(s) including visual impacts (including reflectivity and use of materials, and specific considerations to the bulk, height and scale of the building), required BCA and DDA works, new fixtures, fittings and finishes, any modified services	Section 6
Include a view and visual assessment to illustrate how the proposal impacts on the wider visual setting of the site including on the adjacent heritage items	Section 6
The attempts to avoid and/or mitigate the impact on the heritage significance or cultural heritage values of the site and the surrounding heritage items	Section 6
Justification for any changes to the heritage fabric or landscape elements including any options analysis	Not applicable
If the SoHI identifies impacts on potential historical archaeology, an historical archaeological assessment should be prepared by a suitably qualified archaeologist in accordance with the Archaeological Assessment Guidelines (NSW Heritage Office 1996) and Assessing Significance for Historical Archaeological Sites and 'Relics' (NSW Heritage Council of NSW, 2009). This assessment should identify what relics, if any, are likely to be present, assess their significance and consider the impacts from the proposal on this potential archaeological resource. Archaeological testing may be appropriate to confirm potential and to guide proposed strategies to avoid harm to archaeological 'relics'.	Section 6
Where harm (to potential archaeological resources) is likely to occur, it is recommended that the significance of the relics be considered in determining an appropriate mitigation strategy. If harm cannot be avoided in whole or part, an appropriate Research Design and Excavation Methodology should also be prepared to guide any proposed excavations or salvage program.	Not applicable

1.4 Report Structure

This report is set out as follows:

Table 1-2: Structure of report

Section	Content
Section 1	General project and study area information
Section 2	Overview of legislative framework
Section 3	Historical context and database searches
Section 4	Results of site inspection
Section 5	Assessment of heritage significance of items potentially impacted by project
Section 6	Assessment of impact on heritage items and values
Section 7	Conclusion and recommendations

1.5 Authorship and Acknowledgement

This Heritage Impact Assessment (HIA) was prepared by Jacobs' Senior Heritage Consultant, Deborah Farina. Mapping and GIS was prepared by Jacobs' GIS Consultant, Laura Kelly. A technical review was undertaken by Jacobs' Principal Archaeologist, Fran Scully.

1.6 Assumptions and Limitations

This report has been prepared for the sole use of the proponent as part of the proposal listed in this section. All information retrieved from the client and third-party sources is presumed to be accurate at the time of preparation of this report. Some historical information was sourced from publicly available databases and is also presumed correct.

This report should be read in full, with no excerpts to be construed as representative of the findings of this report. No liability is accepted for any use or reliance on the report by third parties



Legend

Study area

0 50 100 m
1:3,000 at A4
GDA94 MGA56



Data sources

Jacobs 2020
MetroMap 2020
© Department Finance, Services
and Innovation 2019



Figure 1-1 Study area

2. Legislative context

The management of non-Aboriginal heritage in Australia is administered at a Federal, State and local level, depending on the significance of the heritage item. Federal legislation covers World, National and Commonwealth heritage, State legislation covers State heritage items and local governments manage items of local heritage significance. Each is managed according to separate legislation, a brief overview of which is here. It should be noted that this overview is provided for information only and should further information be required, legal advice should be sought from a qualified legal practitioner.

2.1 Federal Legislation

2.1.1 *Environment Protection and Biodiversity Conservation Act 1999*

The *Environment Protection and Biodiversity Conservation Act 1999* (EPBC Act) includes 'national heritage' as a Matter of National Environmental Significance and protects listed places to the fullest extent under the Constitution. It also establishes the National Heritage List (NHL) and the Commonwealth Heritage List (CHL).

The following is a description of each of the heritage lists and the protection afforded places listed on them.

2.1.1.1 Commonwealth Heritage List

The CHL is established under the EPBC Act. The CHL is a list of properties owned by the Commonwealth that have been assessed as having significant heritage value. Any proposed actions on CHL places must be assessed for their impact on the heritage values of the place in accordance with Actions on, or impacting upon, Commonwealth land, and actions by Commonwealth agencies (Significant Impact Guidelines 1.2). The guidelines require the proponent to undertake a self-assessment process to decide whether or not the action is likely to have a significant impact on the environment, including the heritage value of places. If an action is likely to have a significant impact an EPBC Act referral must be prepared and submitted to the Minister for approval.

2.1.1.2 National Heritage List

The NHL is a list of places with outstanding heritage value to Australia, including places overseas. Any proposed actions on NHL places must be assessed for their impact on the heritage values of the place in accordance with Matters of National Environmental Significance (Significant Impact Guidelines 1.1). The guidelines require the proponent to undertake a self-assessment process to decide whether or not the action is likely to have a significant impact on a matter of National Environmental Significance, including the national heritage value of places. If an action is likely to have a significant impact an EPBC Act referral must be prepared and submitted to the Minister for approval.

2.1.1.3 Register of the National Estate

The Register of the National Estate (RNE) was formerly compiled as a record of Australia's natural, cultural and Aboriginal heritage places worth keeping for the future. The RNE was frozen on 19 February 2007, which means that no new places have been added or removed since that time. From February 2012 all references to the RNE were removed from the EPBC Act. The RNE is maintained on a non-statutory basis as a publicly available archive.

2.2 State legislation

2.2.1 *Environmental Planning & Assessment Act 1979*

The *Environmental Planning and Assessment Act 1979* (EP&A Act) requires that environmental impacts are considered in land-use planning, including impacts on Aboriginal and non-Aboriginal heritage. Part 4 Division 4.7 of the EP&A Act applies to State Significant Development projects. This influences the way in which other legislation, including the Heritage Act, is applied. Specifically s4.41(1)(c) turns off the requirement to get approvals under part 4 s139 of the Heritage Act.

2.2.2 Heritage Act 1977

The *Heritage Act 1977* (Heritage Act) provides a number of mechanisms by which items and places of heritage significance may be protected. The Heritage Act is designed to protect both listed non-Aboriginal heritage items and potential non-Aboriginal archaeological remains or relics. Currently, non-Aboriginal heritage is administered by the Department of Premier and Cabinet (Heritage) (DPC Heritage).

2.2.2.1 State Heritage Register

Section 31 of the Heritage Act creates the State Heritage Register (SHR). Only those items which have been designated as being of state heritage significance in NSW by the Minister are listed on the SHR. Listing on the SHR controls activities such as alteration, damage, demolition and development. When a place is listed on the SHR, the approval of the Heritage Council of NSW is required for any major work, including the following:

- Demolishing the building or work;
- Carrying out any development in relation to the land on which the building, work or relic is situated, the land that comprises the place, or land within the precinct; and
- Altering the building, work, relic or moveable object.

Ordinarily, an application under section 60 of the Heritage Act must be made to DPC Heritage in order to carry out any such activities. However, Section 4.41(1)(c) specifically excludes the necessity for applying either a permit under Section 60 or any other approval under Part 4 of the Heritage Act.

2.2.2.2 Archaeological relics

Part 6 Division 9 of the Heritage Act protects archaeological 'relics' from being 'exposed, moved, damaged or destroyed' by the disturbance or excavation of land. This protection extends to the situation where a person has 'reasonable cause to suspect' that archaeological remains may be affected by the disturbance or excavation of the land. It applies to all land in NSW that is not included in the SHR. A 'relic' is defined at Section 4 by the Heritage Act as:

Any deposit, artefact, object or material evidence that:

(a) Relates to the settlement of the area that comprises New South Wales, not being Aboriginal settlement, and

(b) Is of State or local heritage significance.

Ordinarily, Section 139 of the Heritage Act requires any person who knows or has reasonable cause to suspect that their proposed works will expose or disturb a 'relic' to first obtain an Excavation Permit from the Heritage Council of NSW (pursuant to Section 140), unless there is an applicable exception (pursuant to Section 139(4)). However, under Section 4.41(1)(c) of the EP&A Act, the requirement for an approval under Section 139 is specifically excluded for projects designated as SSD.

The provisions under Division 4.7 of the EP&A Act, however, apply only to approvals in Part 4 of the Heritage Act. All other sections of the Heritage Act 1977, such as Section 146 of the Heritage Act 1977 (requiring any person who is aware or believes that they have discovered or located a relic notifying the Heritage Council of NSW and providing details of the location and other information required) remain undisturbed by the EP&A Act.

2.2.2.3 Section 170 Heritage and Conservation Registers

Section 170 of the Heritage Act requires State Government agencies to identify, conserve and manage heritage assets owned, occupied or managed by that agency. Section 170 also requires government agencies to keep a Register of heritage items, which is called a Heritage and Conservation Register or more commonly, a Section 170 Register.

The Heritage Act obliges government agencies to maintain their assets with due diligence in accordance with State-Owned Heritage Management Principles approved by the Minister on the advice of the Heritage Council and notified by the Minister to government instrumentalities from time to time.

2.2.3 Local heritage

Items of local heritage significance is administered by local councils, under their Local Environmental Plans (LEPs). Many of the LEPs now follow a standard format, which requires development consent prior to the demolition, moving or alteration of a heritage item or potential archaeological deposits (cl. 5.10, standard LEP). A Council may elect to waive this requirement if it is satisfied that the works are minor in nature, are maintenance works, will otherwise not impact on the heritage significance of the item or is exempt development (cl. 5.10 (3)). In all other cases, a development application must be submitted to council and a Statement of Heritage Impact may be required (cl 5.10 (5)).

2.2.4 Non-Statutory requirements

The Burra Charter

In addition to the above legislation, Australia is party to a number of international treaties and protocols relating to the protection of heritage places. The most important of these is the Australia ICOMOS Charter for Places of Cultural Significance (The Burra Charter), which forms the basis of most heritage legislation and best practice guidelines.

The purpose of the Burra Charter is to provide best practice standards for heritage management. It provides steps for the assessment and management of heritage, as well as principles for the effective conservation, maintenance and/or preservation of items of cultural heritage.

3. Methodology

This assessment is to establish and assess the non-Aboriginal (historic) heritage items and values within the study area, and the extent to which those items and values will be impacted by the Proposal.

The Methodology described below has been designed to reflect the requirements outlined in the NSW Heritage Manual, professional best practice and to address the requirements of the SEARs.

3.1 Methodology

The assessment of non-Aboriginal heritage values has been undertaken as follows:

Desktop assessment

- Review of heritage registers and databases including the State Heritage Register, State Heritage Inventory, Local Environmental Plan, Section 170 Registers, Cultural Heritage List, National Heritage List;
- Review primary and secondary sources including parish maps, TfNSW archives, library, heritage and archaeological databases, community heritage information, previous studies and grey literature; and
- Review of levels of significance for registered items.

Identify any potential heritage items. Field survey

- Site inspection of study area, including inspecting any potential heritage items; and
- Preparation and collation of data. This includes preparation of site inspection recording forms for each item inspected that will record the following: physical detail, location, setting, fabric, current use and associated features.

Assessment and reporting

- Undertake a non-Aboriginal (historic) heritage assessment of identified heritage items in accordance with the SEARs for the EIS proposal area. The heritage assessment includes significance assessments of heritage items potentially impacted by the project against the NSW Heritage Council's significance criteria;
- High-level impact assessment of identified heritage and preparation of a SoHI;
- Includes figures of registered identified heritage on aerial imagery (plot curtilage, where known, as polygon);
- Provides recommendations as to any additional works such as archival photographic recording or heritage approvals / notifications that may be required prior to works commencing;
- Provides recommendations that would help to avoid, minimise or mitigate against impacts to the identified cultural heritage values of the heritage item. A list of mitigation measures has been provided;
- Updates following client review; and
- Responses to submission.

4. Historical context

4.1 Brief chronology of land use in the study area

Table 4-1: Chronology of land use

Year	Event
Pre-1791	Burramattagal land
1791	Land comprising study area included in expanded Government Domain
1791-1856	Agricultural purposes
1856	Land subdivided
1856-1906	Orcharding, agricultural uses
1906	Land resumed and reserved for insane asylum; known as "Hospital Paddocks"
1978	Children's Hospital, Westmead constructed

4.1 Development of study area - Introduction

The study area forms part of the traditional lands of the Burramutta people, a clan of the Darug nation. It is located on a gentle rise south of Toongabbie Creek and 600 metres south west of that creek's confluence with the Parramatta River.

From c.1790 until the mid-19th century, the study area was located within the Government Domain, and known as the "West Meadow". It was used for agriculture, in particular for grain cropping and grazing.

In the late 19th century, small private holdings took up much of the subdivided former domain, and Westmead became known for its orchards. In 1906, much of the land now comprising Westmead Hospital, the Children's Hospital, Westmead and the Cumberland West precinct of the Cumberland Hospital Group, was resumed as part of the Parramatta Insane Asylum, and marked as the "Hospital Paddocks". Some of the land was still leased for orchards and aerial photographs from 1943 show that the area was largely rural in nature.

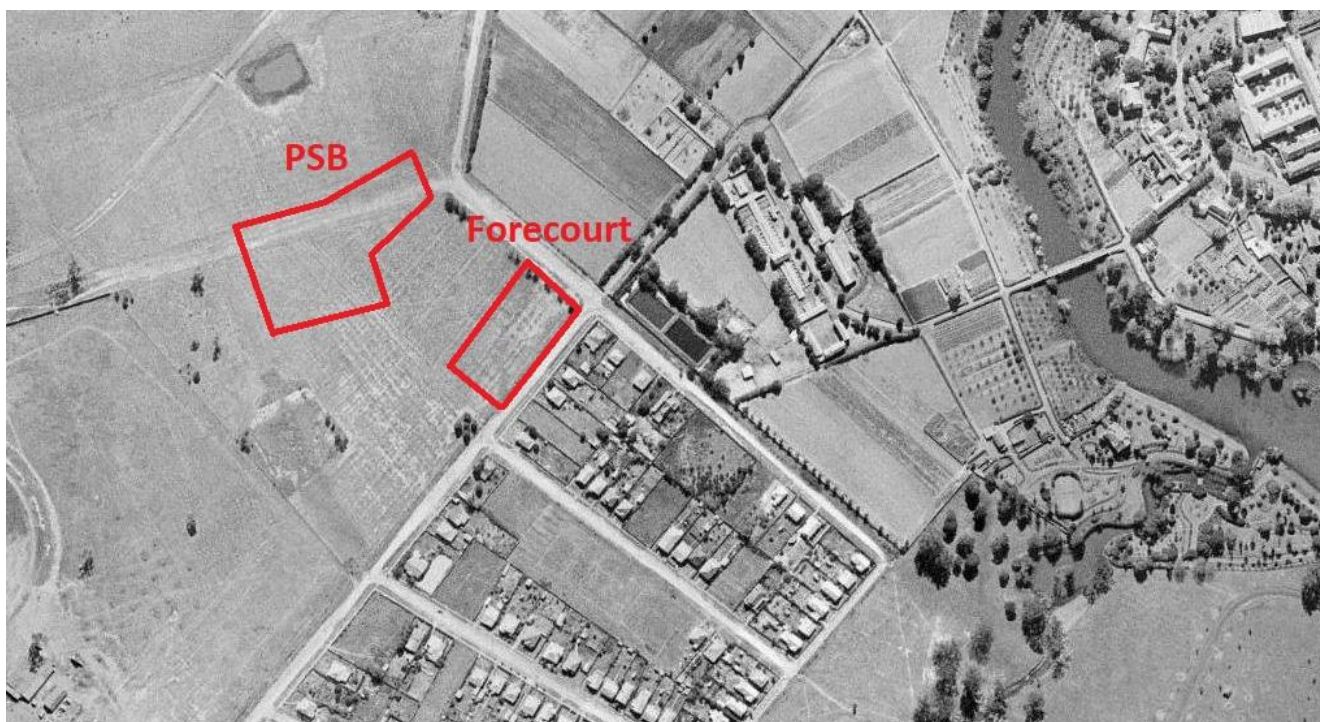


Figure 4-1: 1943 aerial photograph of study area and environs, with approximate locations of PSB and KIDSPARK (labelled as Forecourt in figure) (Courtesy: Six Maps).

4.2 Government Domain 1788-1856

Shortly after settlement of the first European colony in New South Wales, a second settlement was established at nearby Parramatta, originally called “Rose Hill”. The impetus for this second settlement was for agricultural purposes; all crops in the Sydney settlement having failed. Governor Phillip arrived with 11 soldiers and 10 convicts to establish the new outpost, constructing an enclosure and supply stores. Convict labour cleared land and planted crops. By 1790, a cottage of lath and plaster was built for the governor on the Government Domain. The Government Domain included stockyards, a lumber yard, the residence and the redoubt, as well as crops and grazing lands.

In 1788, Governor Phillip walked along the banks of the Parramatta River looking for suitable land for farming. At the land to the south of the confluence of Toongabbie Creek and to the west of the headwaters of Parramatta River (now part of the study area) became the site of a public settlement. Known initially as “the new ground”, the Deputy Judge Advocate and secretary to the Governor, David Collins, mentions the land in August 1791, noting that when cleared the land could yield 40 to 50 acres (16-20 hectares) of corn (McClymont and Kass, 2010).

The Government Farm was extended to include the Westmead area, known as the “West Meadow”, in c. 1791. Collins referred to this new area as “the new grounds”.



Figure 4-2: "View at Rose Hill, Port Jackson" c. 1791 (Courtesy: State Library of New South Wales, Call No. DG SV1A/24).

Crops planted in Sydney since colonisation had consistently failed, meaning that a reliable food source for the fledgling colony was in jeopardy, particularly with supply vessels sent from England having been affected by vermin. In 1788, a total of 70 acres of land at the Government Farm at Parramatta was cleared and cultivated using convict labour. The first crop was successful however the bulk was used as seed for future crops (Mauldon, 2012:1). In 1790, Watkin Tench reported that 88 (36 ha) of the 200 acres (81 ha) were cleared and under wheat, barley, oats and maize (Gray, 1966).

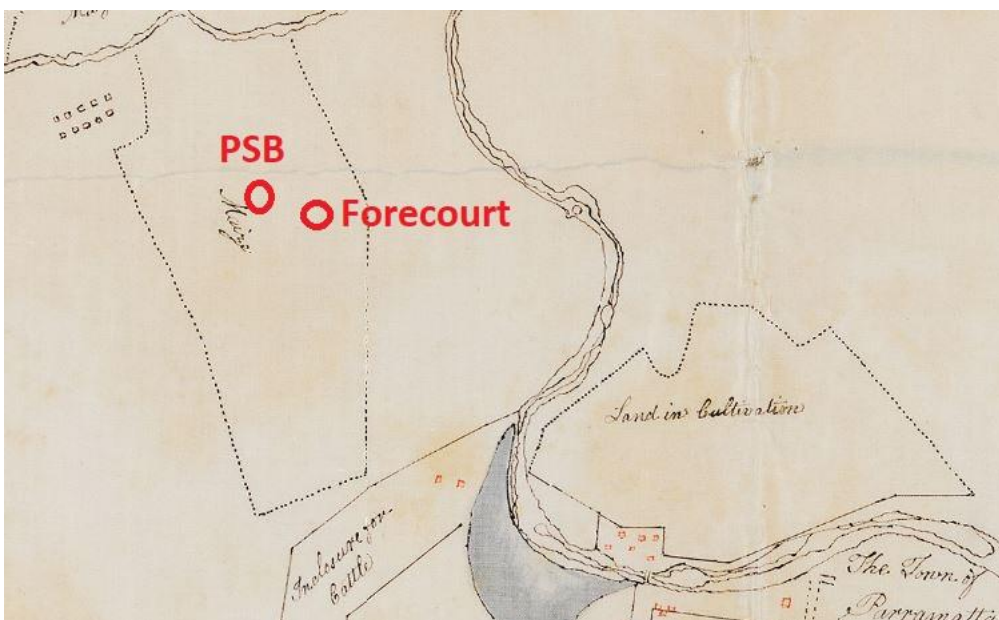


Figure 4-3: Detail of "Plan of the settlement of Parramatta made by Governor Hunter, 20 August, 1796, much enlarged", showing "land in cultivation". The approximate location of the study area is marked in red (Courtesy: State Library of New South Wales, File FL3688860).

Later that same year, Phillip reported that there were 100 convicts working at Rose Hill, chiefly employed in the clearing of vegetation and cultivation. They were supervised by Henry Edward Dodd, one of the few convicts in the colony with agricultural experience. Phillip described Dodd as having "...much agricultural knowledge [and] a perfect idea of the labour to be required from the convicts" (Phillip in Moulton, 2012:1).

4.2.1 Old Government House

Governor Phillip established the first Government House within the Government domain in 1790, which comprised a small, single-storey lath and plaster cottage. Not much bigger than a convict hut, it measured 44 feet long and 16 feet wide and was demolished in 1799 by Governor Hunter for a larger residence. Governor Macquarie extended Hunter's house to the current design in 1815-1817. It is described as an elegant, Palladian-style residence, boasting a classical timber portico, thought to have been designed by the convict architect, Francis Greenway (Moulton, 2012:1).



Figure 4-4: 'Views of Sydney and Parramatta', by Charles Rodius, c. 1799 depicting Old Government House and the Government Domain. The cattle crossing the bridge is the approximate location of Bridge Road (Courtesy: State Library of New South Wales, Call No. 1833PXA 997).

During the period of private ownership, the land was primarily used for orcharding and grazing of livestock.



Figure 4-5: Southern elevation of Government House, looking north (Jacobs, 2020).

4.3 Cumberland Hospital

4.3.1 Chronology

Year	Event
1792-1799	Agricultural land - Smith's Farm
1799-1818	Samuel Marsden's water mill
1806-1841	Agricultural land - Bligh's "Mount Betham"
1818-1847	The Female Factory
1848-1872	Parramatta Lunatic Asylum
1872-1901	Parramatta Lunatic Asylum
1901-1960	Psychiatric Hospital
1960-date	Cumberland Hospital

4.3.2 Agricultural land

The land comprising the Cumberland Hospital, on the eastern banks of the Parramatta River, were first granted to Charles Smith (30 acres in 1792 – see Figure 4-6) and William Bligh (105 acres in 1806). Smith's grant was transferred to Samuel Marsden in 1812 with an additional six acres to construct a water mill on the banks of the River. As Smith was granted a 14-year lease on 4 acres in Parramatta township and a further grant of 40 acres at Prospect Hill in 1799 that this was given as compensation for the resumption of his farm at Parramatta (Higginbotham 1996:9).

William Bligh's 105 acres to the south east of Smith's grant was known as Mount Betham, after his wife's maiden name, however was surrendered in 1841. No record exists of it having been improved or used.

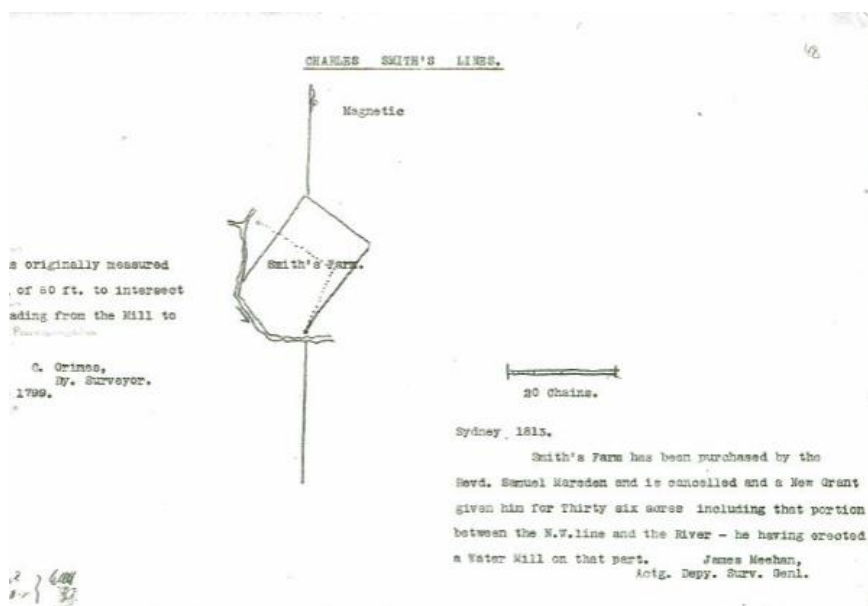


Figure 4-6: Detail of Charles Smith's grant, Serial 1 page 48 of Land Grants 1792-1794 (Courtesy: Historical Land Records Viewer).

4.3.3 Marsden's mill

Samuel Marsden's mill was started in 1799, constructed on the eastern side of the river near the Norma Parker Centre, where flat river stones formed a natural weir and causeway. The mill was constructed under Marsden, who was the superintendent of public works in Parramatta at the time and was opened in 1804. A mill race was constructed across the land that became Cumberland Hospital, carrying water from the river from to the north, southward to the mill (see Figure 4-7).

After Marsden came into Smith's farm, he renamed it "Mill Dam Farm" and it stayed in his family until 1845, when his daughter defaulted on a mortgage to John Blaxland. John Blaxland gifted the land to his future wife, Ellen Faulkner, and renamed it "Red Bank Mill". The land comprised the mill, a cottage for the miller and a house (c. 1836). Ellen held the title until 1866, when it was resumed by the NSW Government to become part of the Parramatta Lunatic Asylum. Although the mill was washed away in a flood in 1866, the house remained as the superintendent's residence until at least 1880 (Higginbotham, 1996:14).

4.3.4 Female Factory

Adjacent to Marsden's mill, in 1818 Governor Lachlan Macquarie laid the foundation stone for a building to accommodate female convicts who could not be assigned to settlers, those who had been returned by settlers, female law-breakers and newly arrived female convicts prior to being assigned. Sick, infirm and pregnant convicts were also housed at the factory. Known as the Female Factory, it was opened in 1821 and operated until 1847.

After the winding down of the convict system, it converted first to a home for the destitute in 1847, then to an insane asylum to take pressure off the overcrowded Tarban Creek asylum at Gladesville. The transition was described by the Sydney Morning Herald:

The beginning of the end in the abolition of the Factory Establishment occurred, pursuant to the Government order... Several confines (or persons free by servitude) being within six months of their respective sentences, were discharged, as were also a large number of the actual (from home sentences)

prisoners, being allowed tickets-of-leave. The lunatics and invalids are still kept within the factory and the circumstances of the present matron and superintendent, Mrs and Mr E H Statham, being retained... while it becomes an adjunct to the establishment at Tarban Creek, (it) will be in future used as the Government Hospital of the district... (I)t is mentioned that at the close of this present month (February) such inmates of the hospital as are or were prisoners of the Crown, will be sent to the hospital at the Factory, whilst those who arrived free in the colony will be forwarded to the Benevolent Asylum At Sydney (Sydney Morning Herald, 1848:2).

4.3.5 Parramatta Lunatic Asylum

From 1849, the former Female Factory became a mental health hospital. It went through various names, and is still in use for that purpose:

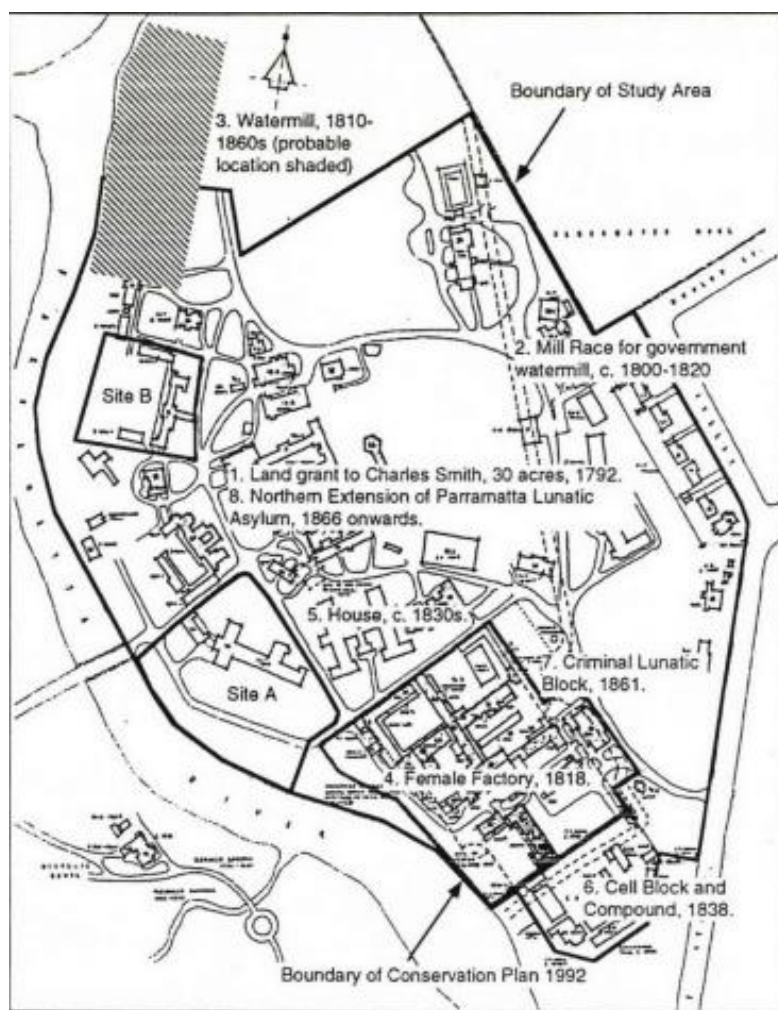
Date range	Name
1849-1868	Parramatta Lunatic Asylum
1869-1914	Parramatta Hospital for the Insane
1915-1983	Parramatta Mental Hospital/Parramatta Psychiatric Centre
1983-date	Cumberland Hospital

In 1849 a notice in the NSW Government Gazette stated that part of the Female Factory had been "appointed a public Asylum for the reception and custody of lunatics" (NSW Government Gazette 1849, p. 1941). Although various repairs, extensions and improvements had been made to the Female Factory since its opening in 1821, great repairs were made in 1849 in preparation of its use as an asylum. It comprised a free and criminally insane division, with separate registers for each (NSW State Archives & Records, undated).

By 1868, the hospital was full. Dr Frederick Norton Manning described the asylum as having "gloomy and ill-ventilated cells and their iron-barred doors". By the 1870s, there were 704 free patients and 45 criminal patients. From 1958, only female criminally insane patients were confined at Parramatta, with male patients transferred to the maximum-security hospital at Morisset (NSW State Archives & Records, undated).

A new building was completed in 1885 and part of the old Female Factory was demolished. Despite the new building, overcrowding continued to be a problem. In the 1970s the focus away from in-patient care to community care and treatment in general hospitals, reducing the in-patient population (NSW State Archives & Records, undated).

The last name change of the hospital occurred in 1983, and in 1995 the Institute of Psychiatry relocated to Cumberland Hospital (Figure 4-7).



Cumberland Hospital, Eastern Campus.

Site plan.

0 50 100 200 metres

Figure 4-7: Layout of Cumberland Hospital in 1996 with the location of Marsden's Mill, the mill race, the original female factory building and other items (Higginbotham, 1996:5).

4.3.1 Cumberland West Precinct

In 1858, 23 acres of land on the western side of the river from the asylum was added to its grounds. A survey from that year showed it as the "Asylum Farm" and contained an orchard and garden. A further six acres was to be used as a private entrance to the asylum, which later became the Wisteria Gardens (Perumal Murphy Alessi et al. 2010, p. 31).

In 1906, Glengariff House was constructed for the Medical Superintendent, Dr William Cotter Williamson. It was designed by W L Vernon, who was appointed Government Architect in 1890 and designed buildings such as Art Gallery of New South Wales, the Mitchell Wing of the State Library of New South Wales and Fisher Library at the University of Sydney (Office of Environment & Heritage 2015). Shortly after occupying Glengariff, Dr Williamson travelled to Japan and brought back cuttings of wisteria, which he called "wistaria". Gardens containing the "wisteria" were planted in 1907, forming the "Wisteria Gardens" and an iron fence separating them from Parramatta Park was erected in 1908 (Perumal Murphy Alessi et al 2010, p. 49).

Glengariff continued as the official residence of the superintendent until 1963, when it was resumed for the care of patients. In 1993 a chapel and other buildings were constructed adjacent to Glengariff, all funded through fundraising efforts such as fetes in the 1960s (Office of Environment & Heritage 2015).

4.4 Non-Aboriginal heritage database searches

Searches of all National, State and local heritage databases were undertaken on 15 December 2020 with the following results (see Table 4-2-Table 4-5).

4.4.1 Australian Heritage Database

The Australian Heritage Database (AHD) is administered by the Commonwealth Department of the Environment and Energy (DEE) and records World, National and Commonwealth heritage places. It also records items on the now defunct RNE.

A search of the AHD was undertaken on 15 December 2020 with one item of World, National or Commonwealth heritage identified.

Table 4-2: National and World heritage items

Item	Address	Heritage Significance
Australian Convict Sites	Old Government House and the Government Domain, Parramatta	World
Old Government House and the Government Domain		National
Female Factory and Institutions Precinct	Fleet Street, Parramatta	National

One item from the RNE was identified approximately 200 metres north of the study area, within Toongabbie Creek (Table 4-3).

Table 4-3: Items on the RNE (non-statutory)

Item	Address	Type of place
Railway Bridge Pier and Abutment	Redbank Road, Westmead	Indicative place

4.4.2 State Heritage

A search of the SHR was undertaken on 15 December 2020. Two state heritage items were identified within the vicinity of the study area (Table 4-4).

Table 4-4: Items of State heritage significance

Item	Address	SHR ID
Cumberland District Hospital Group	5 Fleet Street, Parramatta	00820
Parramatta Park and Old Government House	Parramatta Park	00596

Local Heritage

A search of Schedule 5 of the *Parramatta Local Environmental Plan 2011* (Parramatta LEP) on 15 December 2020 showed the following items within the vicinity of the study area (Table 4-5).

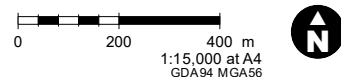
Table 4-5: Items of local heritage significance

Item	Address	Inventory Number	Distance from study area
Arrunga Reserve—Toongabbie Creek	27 Chetwyn Place and 4 Harris Road, Constitution Hill, and 48 Mayfield Street, Wentworthville	I36	Approximately 1.1 kilometres west
Cottage	22A Redbank Road, Northmead	I446	Approximately 400 metres north
Cumberland District Hospital (including Wisteria Gardens)	5A Fleet Street, North Parramatta; 1 Hainsworth Street, Westmead	I00820	Approximately 250 metres east from Cumberland West precinct, 490 metres from Cumberland East precinct and 550 metres north west of Wisteria Gardens
Western Sydney University	158-164 Hawkesbury Road, Westmead	I628	Approximately 610 metres south
Victorian residence (in grounds of UWS)	158-164 Hawkesbury Road, Westmead	I629	Approximately 610 metres south



Legend

- Study area
- Heritage - World, national, state & local significance
- Heritage - National significance
- Heritage - State & local significance
- Heritage - Local significance



Data sources

Jacobs 2020
 MetroMap 2020
 © Department Finance, Services
 and Innovation 2019
 © Department of Planning, Industry
 and Environment 2020
 © Department of Premier
 and Cabinet 2020

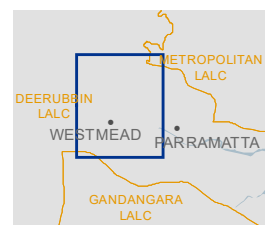


Figure 4-8 Built heritage items in the vicinity of study area

4.5 Archaeological Potential

In 2000 Godden Mackay Logan (GML) undertook the "Parramatta Historical Archaeological Landscape Management Study 2000" (PHALMS). This study primarily identified archaeological management units (AMUs) over the land that once was part of the Government Domain in the 1790s. These AMUs are listed on the State Heritage Inventory.

The study area forms part of AMU 3070, which is described as the "health institutions" within the area bounded by "Mons, Darcy and Hawkesbury Roads and Hainsworth Street, Parramatta Park, Parramatta River and Toongabbie Creek" (Inventory Sheet, AMU 3070). It is noted that the area between the Redbank Centre and the ADHC facility (Marsden Centre) may have the archaeological remains of convict huts, although it is conceded that these are based on maps from 1791 and may not be accurate. It is also theorised that convict huts may have been closer to Toongabbie Creek, and under bridges.

This AMU is described on the State Heritage Inventory (SHI) as covering the following area:

This AMU comprises the health institutions west of the Parramatta River and south of Toongabbie Creek. The area is bounded by Mons, Darcy and Hawkesbury Roads and Hainsworth Street, Parramatta Park, Parramatta River and Toongabbie Creek. Internal streets include: Institute and Bridge Roads and Paringa Avenue (Office of Environment & Heritage, 2000).

The statement of significance for this AMU on the SHI is:

This AMU has moderate archaeological research potential.

In the 1790s, this AMU contained ten workers huts and a large area marked for maize cultivation. The area may have been granted to other farmers, but by 1810 the area was resumed by Governor Macquarie to form part of the Government Domain. The Domain was subdivided in 1859, and this AMU became paddocks for nearby welfare institutions. From the 1970s onward, several health institutions have been established within this AMU.

The physical archaeological evidence within this area may include built landforms, structural features, intact subfloor deposits, open deposits and scatters, ecological samples and individual artefacts which have potential to yield information relating to major historic themes including Agriculture, Pastoralism, Convicts, Labour, Cultural Sites, Migration, Welfare and Health.

Archaeological evidence at this site is likely to be subject to major disturbance, though some areas may remain relatively intact.

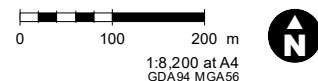
This AMU is of Local significance.

The listing for AMU 3070 assessed the archaeological potential as "moderate" and of potential local heritage significance.



Legend

- Study area
- Parramatta archaeological management unit 3070



Data sources

Jacobs 2020
MetroMap 2020
© Department Finance, Services
and Innovation 2019

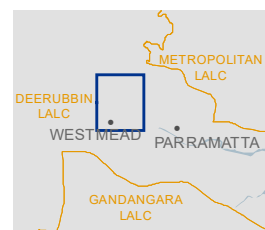


Figure 4-9 AMU 3070

4.6 Literature review

Edward Higginbotham & Associates, 1996, Historical and Archaeological Assessment of Cumberland Hospital, Eastern Campus, Fleet Street, Parramatta NSW.

This historical and archaeological assessment was undertaken on behalf of Western Sydney Area Health Service ahead of the proposed redevelopment of two areas within the Eastern Campus of Cumberland Hospital. Higginbotham's brief was to identify and assess the historical and archaeological significance of the same, and to make recommendations for the management and conservation of the heritage and archaeological values.

This assessment was undertaken following the preparation of a conservation management plan in 1992 for Cumberland Hospital and sought to build on the information presented in that CMP.

Perumal Murphy Alessi, 2010, Conservation Management Plan & Archaeological Management Plan, Cumberland Hospital

This CMP and AMP was prepared in association with archaeologists Edward Higginbotham & Associates, heritage architect Geoffrey Britton and historian Terry Kass. Its purpose is to provide guidance for the conservation, potential adaptive re-use, interpretation and future management of the Cumberland Hospital.

The CMP covers the Cumberland Hospital East precinct and the Wisteria Gardens precinct. It assesses that both precincts are of National, State and local heritage significance. However, it also notes that one of the most pressing impacts to the item is to the overall landscape and vegetation having substantially deteriorated owing to a lack of funding, a lack of an integrated plan of management, the impact of technology and security updates and a lack of adequate access and parking. The CMP suggests that this impact to the item's landscape relates to open spaces within the curtilage of the Cumberland Hospital being used for machinery and parking, rather than any visual impacts caused by nearby development. Despite this, the CMP suggested that the curtilage of both the Cumberland Hospital East and the Wisteria Gardens precincts be included in the adjacent World Heritage listing for Old Government House.

Casey & Lowe, 2014, Baseline Archaeological Assessment & Statement of Heritage Impact, Historical Archaeology: Cumberland Precinct, Sports & Leisure Precinct, Parramatta North Urban Renewal – Rezoning

This baseline assessment was undertaken as part of the Parramatta North Urban Renewal (PNUR) program. The purpose of this assessment was to provide guidance as to the heritage significance of items in the PNUR study area ahead of the preparation of a Master Plan.

Casey & Lowe note that the Cumberland Precinct contains numerous items of State and National significance, including the Female Factory and Asylum precinct, Mill races associated with the government water mill, Marsden's Mill precinct, Mrs Betts' precinct, the Isolation Ward Precinct for potential archaeology relating to Charles Smith's Farm, the Female Weatherboard precinct and Parramatta Gaol. Both Mrs Betts' Precinct and the Isolation Ward precinct were assessed as have the potential for archaeological evidence of early non-Aboriginal occupation and therefore also of State significance. It is also noted that the proposed Master Plan is close to the Government Farm and that the State-significant archaeological sites within Parramatta Park have a bearing on the National significant landscape.

It was therefore recommended that all items and archaeological sites of potential National or State significance be retained *in situ*, interpreted and opportunities for further research be investigated. Potential sites of State and/or local archaeological significance should also be retained *in situ*, however where this is not possible, detailed archaeological investigations must be undertaken. All areas of local archaeological significance within the Cumberland precinct should also be subject to detailed archaeological assessment. An archaeological management strategy was also recommended.

Rappoport Pty Ltd, 2014, Statement of Heritage Impact – Proposed Ronald McDonald House Adjacent to Redbank Road Entry, Westmead Children's Hospital

This assessment was undertaken ahead of the construction of the new Ronald McDonald House (RMH) on the northern side of Labyrinth Way, Westmead, in the north east of the Children's Hospital, Westmead precinct. Rappoport notes that the site of the new RMH was within the AMU 3070, adjacent to the curtilage of the Cumberland Hospital and a short distance from the Old Government House and Domain. The assessment therefore focused on these three items.

Rappoport notes that the site was located on vacant land approximately 150 metres from the confluence of Toongabbie Creek and Parramatta River. It was noted further that the site was within the AMU 3070, which was designated as being of high sensitivity on the Parramatta Development Control Plan (DCP) 2011 Aboriginal Sensitivity Map. Adjacent to the site were the 1970s, single-storey Paringa and Yaralla blocks of Cumberland West and the former Ronald McDonald House.

Rappoport notes that while the site is adjacent to heritage items Cumberland Hospital and Parramatta Park, the site is not within any of the "important views" or part of any "high significance view". However, it was noted in a report relating to Old Government House that the site was within an area of "proximity", and that such areas were in the "middle ground of a view". Development in such an area may have an impact but with no risk of a significant impact on World and National heritage values for Old Government House.

It was concluded that while part of the site was within the curtilage of the Cumberland District Hospital Group, it was located at some distance and not within the visual catchment of the item. It was concluded further that the proposal would not impact on significant views associated with either the Cumberland District Hospital Group or the Old Government House/Parramatta Park items.

RPS, 2015, Statement of Heritage Impact – Multi Storey Car Park, Westmead Hospital

This assessment was undertaken ahead of the construction of a MSCP and an at-grade car park to service the redevelopment of Westmead Hospital. The MSCP is located approximately 195 metres to the south east of the study area; the at-grade car park is on the corner of Dragonfly Crescent and Darcy Road, Westmead, opposite the current study area. The 2015 assessment was prepared as part of an EIS under a State Significant Development (SSD) Application.

The extensive historical use of the site was noted, however it was assessed that the potential for archaeological remains were low. As the early land use was restricted to agriculture (with the exception of potential convict huts in the vicinity of the land between the Marsden Centre and Redbank House), then nothing until the construction of the Parramatta Showground in 1931, there was little potential for non-Aboriginal archaeological material to remain. It was assessed further that the subsequent disposal of asbestos by James Hardie and the construction of Westmead Hospital would have removed all traces of early non-Aboriginal occupation.

RPS, 2016, Westmead Redevelopment: Central Acute Services Building, Heritage Assessment

This assessment was prepared ahead of the proposed construction of the CASB. This assessment covered both Aboriginal and non-Aboriginal heritage. The CASB is located adjacent to the proposed PSB, and approximately 300 metres from the interim parking facility.

As with the Aboriginal assessment, this report found that there was little potential for non-Aboriginal heritage to remain. The former land use in this part of the site was restricted to agriculture, leaving little in the archaeological record.

Jacobs, 2019, Children's Hospital Westmead Stage 2 – Interim Parking, Statement of Heritage Impact

This assessment was prepared ahead of the proposed use of the former Marsden Centre as interim car parking following the demolition of P17 at the CHW. The former Marsden Centre is located approximately 395 metres to the north west of the current study area.

The assessment drew on previous assessments undertaken as part of the Westmead Redevelopment. Although there were no heritage items listed in the vicinity of the former Marsden Centre, along with the other health facilities at Westmead it is located within AMU 3070 and therefore had been assessed as having moderate archaeological potential for deposits relating to its 18th and 19th century agricultural use associated with the former Government Domain.

It was concluded that the subsequent construction of the former Marsden Centre likely removed all archaeological deposits and that there was a low-nil potential for archaeological deposits to be disturbed during works associated with the construction of the interim car park.

4.7 Summary

With its proximity to the early administrative centre of the Colony, there are items of World, National, State and local significance within 500 metres of the PSB study area. Recent infrastructure projects, such as the Westmead Redevelopment, the Parramatta North Urban Renewal project and the Parramatta Light Rail have resulted in a number of heritage studies, and the addition of the Female Factory to the NHL in 2017. These heritage studies are unanimous in assessing the Cumberland Hospital Group and Old Government House/Parramatta Park as being of high heritage significance and sensitivity.

5. Site visit

5.1 Timing and personnel

A visual inspection of the area was undertaken on 17 June 2020 by Deborah Farina (Senior Heritage Consultant, Jacobs). The site inspection aimed to assess the degree of previous disturbance in the study area and whether there are any remaining landscape features that would be likely to contain non-Aboriginal objects.

5.2 General physical context

The study area is highly disturbed urban landscape and contains Westmead Hospital; the Children's Hospital, Westmead; and associated buildings and infrastructure. No natural land surfaces were observed in any of the three precincts, with the site of the PSB currently occupied by a multi-storey car park (P17) that was still in use at the time of the inspection. At the KIDSPARK, a landscaped garden is located next to the main entrance of the CHW. Redbank Road runs at the rear of the car park and main CHW building. While Toongabbie Creek runs to the north of the hospital, it is separated from the hospital complex by fencing, a hard-surface walking track and thick vegetation.

5.3 PSB

The location proposed for the PSB is located high on the ridge on the north-western side of Hawkesbury Road and to the west of the entrance to the main CHW hospital building. A low-rise multi-storey car park currently occupies the site and is used for staff parking. It is adjacent to the new Central Acute Services Building (CASB) of Westmead Hospital (Figure 5-1) and at the rear of the Children's Medical Research Institute, which fronts Hawkesbury Road.

Aside from landscaped gardens, no natural land surfaces were observed in this location. It is assessed that there is low to nil potential for non-Aboriginal heritage objects to be present at this location.



Figure 5-1: Location of PSB, looking south. CASB is at right (Source: Jacobs, 2020).

5.4 KIDSPARK

The proposal includes the redevelopment of the KIDSPARK. The existing forecourt is located to the immediate south of the main entrance to the CHW building (Figure 5-2). It comprises a landscaped open space with outdoor

seating along Hawkesbury Road. A grassed area has been constructed with brick edging on what appears to be a mound of fill (Figure 5-3).

With no natural land surfaces observed, it is considered unlikely that any non-Aboriginal archaeological deposits would be present in this location.



Figure 5-2: Proposed location of new forecourt, looking north towards the main entrance of CHW (Source: Jacobs, 2020).



Figure 5-3: Proposed location of new forecourt, looking south (Source: Jacobs, 2020).

5.5 Results

The visual inspection examined the study area for the proposal. No new items of non-Aboriginal heritage or areas of archaeological potential were identified during the site visit.

6. Significance Assessment

6.1 Introduction

Before making decisions about the future of a heritage item it is first necessary to understand its heritage values. This leads to decisions that will retain these values in the future.

An item will be considered to be of State (or local) heritage significance if, in the opinion of the Heritage Council of NSW, it meets one or more of the NSW heritage assessment criteria. The assessment criteria encompass the values in the *Australia ICOMOS Burra Charter*.

There are no listed heritage items in the vicinity of the PSB study area. However, there are two listed heritage items of National heritage significance in close proximity to the study area to be assessed for visual impact:

- Old Government House & Government Domain/Parramatta Park and Old Government House (World/State); and
- Cumberland District Hospital Group (State).

6.1.1 Significance criteria

Table 6-1: NSW Significance assessment criteria

Criterion	Description	Short title
A	An item is important in the course, or pattern of NSW's cultural or natural history (or the cultural or natural history of the local area)	Historical significance
B	An item has strong or special association with the life or works of a person, or group of persons, of importance in NSW's cultural or natural history (or the cultural or natural history of the local area)	Associative significance
C	An item is important in demonstrating aesthetic characteristics and/or a high degree of creative or technical achievement in NSW (or the local area)	Aesthetic/technical significance
D	An item has strong or special association with a particular community or cultural group in NSW (or the local area) for social, cultural or spiritual reasons	Social significance
E	An item has potential to yield information that will contribute to an understanding of NSW's cultural or natural history (or the cultural or natural history of the local area)	Research potential
F	An item possesses uncommon, rare or endangered aspects of NSW's cultural or natural history (or the cultural or natural history of the local area)	Rarity
G	An item is important in demonstrating the principal characteristics of a class of NSW's <ul style="list-style-type: none"> • Cultural or natural places; or • Cultural or natural environments. (or a class of the local area's <ul style="list-style-type: none"> • Cultural or natural places; or • Cultural or natural environments) 	Representativeness

6.1.2 Grading of significance

Table 6-2: Gradings of heritage significance

Grading	Justification	Status
Exceptional	Rare or outstanding element directly contributing to an item's local or State heritage significance	Fulfil criteria for State or local listing
High	High degree of original fabric. Demonstrates a key element of the item's significance. Alterations do not detract from significance.	Fulfil criteria for State or local listing
Moderate	Altered or modified elements. Elements with little heritage value but which contribute to the overall significance of the item.	Fulfil criteria for State or local listing
Little	Alterations detract from significance. Difficult to interpret.	Does not fulfil criteria for State or local listing
Intrusive	Damaging to the item's heritage significance.	Does not fulfil criteria for State or local listing

6.2 Assessments of Heritage Significance

6.2.1 Old Government House and Government Domain/Parramatta Park and Old Government House

This significance assessment has been taken from the SHR listing for this item.

Criterion	Assessment
(a) Historical significance	<p>Parramatta Park demonstrates the development of people's interaction with the environment. The land was first used by the Burramatta clan of the Dharug Aboriginal people as a fishing and hunting ground. The Burramatta people's connection to the land saw the Park become the site of significant interaction with European people. As such Parramatta Park contains evidence of the first impact of British settlement and the subsequent development of many phases of the Nation's development. The site is closely associated with the beginnings of rural settlement in Australia and with exploration and the extension of colonisation. Rural settlement at the head of the Parramatta River had early importance to the colony as productive agricultural land, stockyards and lumberyards. The proclamation of Government Domain in 1790 and the construction of Old Government House is strong evidence of this. The former Government Domain and vice-regal residence at Parramatta demonstrates the early importance of the rural settlement at the head of the Parramatta River. Old Government House itself demonstrates the growth of the colony, from an impermanent cottage built with the limited material available, into a grand residence followed by the consolidation of public administration in Sydney.</p> <p>The current use, as a public park, is a continuation of historic uses since the public movement for recreation space achieved the release of Government Domain lands for a racecourse in the 1840s and then the creation of Parramatta Park in 1857. The sport of cricket has been played within Parramatta Park as an integral part of its history as a public park and contributes to that significance.</p> <p>The park is historically significant as a site of Aboriginal and early European heritage, early agriculture and as a seat of government. The park is the remnant of the Government Domain which dates from first settlement and was used for early grazing and food crops as well as for the private use of the Governor. Old</p>

Criterion	Assessment
	Government House was the early focus of Parramatta, an indicator of its importance and was the starting point for several early explorations of the interior.
(b) Associative significance	<p>Parramatta Park is of State significance as a landscape and house created by Governor and Mrs Macquarie. As Old Government House, the site is also primarily associated with Governors Phillip, King, Macquarie, Brisbane, Darling and Fitzroy. The buildings were associated with the King's School, a state significant educational institution. In 1970 the National Trust, a significant heritage organisation to New South Wales, began its long association with the site.</p> <p>Old Government House is the architectural work of two prominent early colonial architects: Francis Greenway and Lieutenant John Watts. Government architect Walter Liberty Vernon is associated with the refitting of the house for use by the King's School and meticulously recording the building prior to the works.</p> <p>The site has additional significance for its historic associations, through the Parramatta Observatory, with astronomers James Dunlop and Christian Carl (Charles) Rumker, both of whom were recognised in Europe for their achievements.</p>
(c) Aesthetic/technical significance	<p>The site is aesthetically significant for its cultural landscape values. Old Government House shows the direct translation of English building forms to Australia. It contains original eighteenth century English joinery, no other examples of which occur in Australia to this standard. The work of three significant architects (Watts, Greenway and Vernon) is also demonstrated in the house.</p> <p>The location of Old Government House was chosen for the expansive views commanded. The garden design augmented the setting to form an aesthetically significant landscape and aspect. The effect created is striking, originally to enforce the status of the Governor over the convicts and free settlers inhabiting the township below - a conscious recreation of an English working manorial estate. The House is one of very few where the original setting can still be seen. Old Government House is an aesthetically significant Palladian-style country house and illustrates the best of the elegant "Old Colonial Georgian" style of architecture.</p>
(d) Social significance	<p>Research has demonstrated that the presence of large and cohesive Aboriginal groups in the township of Parramatta represented a conspicuous and enduring aspect of the post-colonial periods of Parramatta's development. Parramatta was their traditional hunting and fishing grounds and this aspect of traditional use can be interpreted still in Parramatta Park through features such as remnant indigenous plantings, scarred trees and the proximity to the Parramatta River and riverine features such as the anabranch of the Crescent and the "Island", a billabong type feature near the George Street gatehouse.</p> <p>Old Government House is of social significance to the people of New South Wales as an early seat of government and a site integral to the formation of the Colony and as a tourist and school excursion destination.</p>
(e) Research potential	<p>Old Government House and Parramatta Park have exceptional archaeological research potential, and are of state heritage significance. The complex was a seat of the Colonial Governor from 1788 to 1855, when the present Government House, Sydney finally prevailed as the vice-regal residence. Retained in public ownership, the Park is a complex cultural landscape which includes individual archaeological features and deposits of unparalleled research potential. The physical archaeological evidence within this area may include built landforms,</p>

Criterion	Assessment
	<p>structural features, open deposits and scatters, ecological samples and individual artefacts which have potential to yield information relating to major historic themes including Aboriginal Pre-Contact, Aboriginal Post-Contact, Environment, Convicts, Government and Administration, Labour, Industry, Agriculture, Pastoralism, Monuments and Sites, Sport and Science. Archaeological evidence at this site is likely to be largely intact, though subject to major disturbance in some areas.</p> <p>Governor Thomas Brisbane's 1822 Observatory site is of historic and scientific significance as marking the first permanent observatory site in Australia and also Brisbane's contribution as the man who established astronomy and scientific activities in the colony. Brisbane was a skilled astronomer in his own right and work here produced some of the most important astronomical observations in the southern hemisphere in the first half of the 19th century. The transit stones were also used as the meridian mark for Thomas Mitchell's first trigonometrical survey of Australia in 1828.</p>
(f) Rarity	<p>The former Old Government House is the oldest surviving public building in Australia, has significant historic associations and is a unique example of 18th century English building work in Australia. It is rare as the oldest surviving vice-regal residence in Australia.</p> <p>The road ways in Parramatta Park are significant as many of them represent the remains of the earliest town planning in Parramatta. The road layouts have been designed to reflect the natural topography of the area including the River Road, which follows the course of the Parramatta River. As the road alignments have remained substantially unchanged since the 1880s, the roads are likely to have beneath them substantial remains of older road surfaces, culverts and retaining walls. These remains are potentially highly significant for their ability to demonstrate early convict road building techniques. The roadways within the Park also have a park-land ambience, which separate them from the busy roads surrounding the Park.</p>
(g) Representativeness	<p>Old Government House and Parramatta Park are representative of the Old Government Houses established around New South Wales in the early years of the Colony, including those on Norfolk Island, Newcastle, Windsor and Sydney. While not all of the same architectural style or with such extensive domains, Parramatta is an example of construction of accommodation for the Governors of New South Wales.</p>

Intactness and Integrity

Generally good, but affected by encroachments, particularly Parramatta Stadium.

Statement of significance

Parramatta Park demonstrates continuous cultivation and land-use from the management of the Cumberland Plain grasslands by the Burramatta clan of the Dharug Aboriginal people and later through the processes of colonisation, from exploration to occupation, including land clearing and building. The first farm to produce sufficient food to feed the penal colony was established here beside the river in 1788, saving the settlement from starvation.

Following Governor Phillip's establishment of the Governor's Domain in 1790 the area contained agricultural land, stockyards, lumber yards and most significantly, the governor's residence and vice-regal offices. Old

Government House at Parramatta demonstrates the growth of the Colony, from an impermanent cottage, built with the limited material available, into a grand residence with some of the finest extant plaster and joinery from the Georgian period.

A landmark site, the Park and House retains historical association with successive governors and was the location for significant interaction between Aboriginal and European people. It demonstrates early town planning and landscaping design and features strategic and picturesque views and vistas, created to frame Old Government House and enforce the status of the Governor over the convicts and free settlers inhabiting the township below. As such it is a conscious recreation of English landscapes of control.

The Domain was used for botanical and astronomical scientific research, and the Park is considered both a European and Aboriginal archaeological resource of national significance.

The Park has evolved from being one of the earliest successful agricultural sites of the colony, including the site of the only 18th century vice-regal residence and seat of colonial government remaining intact today, to one of the most important and earliest open spaces dedicated for public use. The Park has continuously operated as a public park since 1857, reinforced by its gazettal as a National Park in 1917. Old Government House was used by Governors until 1855, tenanted by the King's School and other organisations, and then operated by the National Trust since 1970 as a house museum. Parramatta Park retains strong associations with the local Aboriginal community.

The whole site is a unique and rare demonstration of the evolution of New South Wales and Australian society since 1788.

6.2.2 Cumberland District Hospital Group

This significance assessment comes from the SHR listing and CMP for this item (Pemulwy Murphy Wu, 2010:334-337).

Criterion	Assessment
(b) Historical significance	<p>The Cumberland Hospital Heritage Precinct is a place of national significance. It provides abundant physical evidence from the formative years of the Colony of New South Wales, and the initial settlement of Parramatta. It has been in continuous institutional use since 1818. What survives of the various buildings, relics and landscapes provides a valuable insight into changing attitudes to welfare, criminal behaviour and mental health, over a period of 175 years.</p> <p>All buildings on the site have considerable historical interest, particularly those structures dating back to the initial use of the site as the Female Factory, established by Governor Macquarie. They all provide continuing reminders of the original role and function. Most buildings also have great architectural and aesthetic value.</p>
(b) Associative significance	<p>The site is associated with early grantees Charles Smith and Colonial Governor William Bligh, and with the Reverend Samuel Marsden, who was associated with the construction of a Government water mill and race and privately developed part of the site. These grants are also associated with the Betts and Blaxland families who owned, developed and occupied part of the site.</p> <p>The Eastern campus and Wisteria Gardens are of State significance for their association with Colonial administration and Governors, including Governor Macquarie, who laid the foundation stone in 1818 and was responsible for the initial development of what was the first Female Factory in Australia.</p>
(c) Aesthetic/technical significance	<p>The Cumberland Hospital Heritage Precinct is a place of national significance. It provides abundant physical evidence from the formative years of the Colony of New South Wales, and the initial settlement of Parramatta. It has been in</p>

Criterion	Assessment
	<p>continuous institutional use since 1818. What survives of the various buildings, relics and landscapes provides a valuable insight into changing attitudes to welfare, criminal behaviour and mental health, over a period of 175 years.</p> <p>All buildings on the site have considerable historical interest, particularly those structures dating back to the initial use of the site as the Female Factory, established by Governor Macquarie. They all provide continuing reminders of the original role and function. Most buildings also have great architectural and aesthetic value.</p>
(d) Social significance	<p>The collection of buildings, built for the Lunatic Asylum in the 1870's through to 1910, are outstanding examples of public architecture. Despite their functional simplicity they manifest handsome exteriors, framing the adjoining courtyards in a pleasant human scale. Building 1A, with its imposing clock tower, contributes a sense of dignity and formality.</p> <p>The architecture of the precinct generally reflects Victorian, Georgian and Classical Revival notions of grandeur. Each of the buildings from the 1870-1901 period reflects the influence of Colonial and Government Architect's J Barnet and WL Vernon, as well as FN Manning, the then Inspector General for all lunatic asylums in New South Wales.</p> <p>Internally the buildings were functional and rather austere. The spatial arrangements however, clearly expressed the original uses and continue to evoke images of their historical role.</p> <p>The Wisteria Gardens and Glengariff house are of State significance as a good and largely intact Federation period residence enhanced by its prominent location and setting. The gardens are a modified landscape that demonstrates the philosophies and influences of the period. The character of the landscape can also be attributed to the Dr William Cotter Williamson, who was the medical superintendent from 1900-21 and who took an active role in the establishment of the landscape setting on the overall campus.</p> <p>The site retains significant axes, views and vistas within, to and from the site. The Female Factory was intended to be viewed from the Government Domain (now Parramatta Park), Fleet Street and surrounding areas. The ward pavilions designed by Barnet were also intended to be viewed from the surrounding areas. The design of the airing courts and ha-has created vistas from within the complex across the river. Vernon's layout and planning maintained and created key visual connections on the site, to the River and beyond. Some of the early views and connections remain, including the visual connection between the eastern campus and Wisteria Gardens. The siting and orientation of Glengariff emphasis its dual address to the associated gardens and Parramatta Park and also to the Hospital and eastern campus. The primary façade of the house faces the River and Hospital buildings.</p> <p>Wisteria Gardens significantly retains a physical and visual link and connection with Parramatta Park and the former Government Domain. The dividing palisade fencing is of some local aesthetic significance and was constructed and financed as part of a joint venture between the Hospital and Park Trust in the 1880s. The fencing was apparently recycled and relocated from the city of Sydney.</p>
(e) Research potential	<p>The archaeological potential of the site is of State significance and may provide information about the pre-industrial use of the land, early land grants and agricultural pursuits (mill and mill race) in the colony of NSW. The archaeological resources on the site also have the potential to reveal information about the use and development of the Female Factory and the Lunatic Asylum.</p>

Criterion	Assessment
	<p>The layout of the buildings and landscape provides information on the changes in legislation relating to the care and accommodation of convicts and particularly the mentally ill. From 1845 the purpose of the site and asylums in general shifted from confinement to treatment and cure which resulted in changes in the architecture from gaol-like cell blocks to well-planned wards with proper ventilation and sanitation. The physical layout and design of the Eastern campus is of State heritage significance as it provides a record of such changes in mental health therapy and treatment in NSW. The Parramatta Asylum and later Hospital for the Insane was based on contemporary designs and theories.</p> <p>The site remains intact collections of buildings, spaces and elements that provide evidence of building techniques since the early 19th century. The remaining front ranges of the Female Factory were constructed by contractors. The recreation hall was also partially constructed by patients and hospital attendants. Some of the buildings also significantly retain decorative elements such as tulip motif timber fretwork used by Barnett and moulded plaster, pressed metal ceilings and mosaic tiling used by Vernon, which provide a record of changing decorative styles during the 19th and early 20th centuries.</p>
(f) Rarity	<p>The site is a unique and layered cultural landscape that is of National significance and significantly retains a collection of buildings, elements and landscape features from all phases of its development that demonstrate the history and development of the site and its role in the care and accommodation of women convicts and the mentally ill.</p> <p>Cumberland Hospital East Campus retains buildings, associated external spaces and alignments of walls from the first Female Factory constructed in Australia and despite various additions and alterations, these remain as the most intact evidence of the Female Factories constructed in NSW.</p> <p>The campus landscape includes a remarkable and uncommon collection of mature vegetation with known connection to the Royal Botanic Gardens. In Wisteria Gardens the campus includes one of the most intact and important Edwardian landscapes in NSW.</p> <p>The existing and potential archaeological resources relating to the mill and water race and early agricultural use of the site are of exceptional significance and rare as evidence of an early land grant with a potential modest farm building in contrast to "Elizabeth Farm" plus the first Government mill and race associated with early food production in the colony.</p>
(g) Representativeness	<p>Cumberland Hospital East Campus and Wisteria Gardens is a place of National and State significance that demonstrates its ongoing use as a welfare and health care institution in Australia and NSW for over 180 years. The site significantly retains physical evidence of its various phases of development and valuable insights into the changing attitudes and Government policies in relation to public welfare, criminal behaviour and mental health.</p>

Intactness and Integrity

The condition of the site and its various components varies. Whilst most of the buildings on the site are in use and in reasonable condition, the condition of the overall landscape and vegetation has deteriorated over the last decade. Some of the buildings and spaces have been recently refurbished, however, these recent works have also had some impact on the place.

Incremental work has been undertaken as a use or funding allows, with no Masterplan or direction. Other consequences arise from the continued use of heritage-listed buildings and courtyards for services and facilities

that require large machinery, ancillary structures and protective fencing. These have had a considerable impact on the integrity of important spaces and the ability to interpret the earlier forms, character and use of past phases of exceptional significance.

While some of the most significant buildings and elements are “run-down”, the site provides excellent opportunities for continued and ongoing viable use and interpretation.

Statement of significance

The Cumberland Hospital is a place of National Significance. It provides abundant physical evidence of the formative years of the Colony of New South Wales, and the initial settlement of Parramatta. It has been in continuous institutional use since 1818. What survives of the various buildings, relics and landscapes provides a valuable insight into changing attitudes to welfare, criminal behaviour and mental health, over a period of 175 years.

The layout of the complex and the existing relationships between buildings and spaces continues to convey the organising principles upon which the different institutional uses were administered and structured. The spaces created have continuing landscape significance and aesthetic appeal.

The whole site enjoys an outstanding parkland setting beside the Parramatta River. This reinforces the physical links and historical associations with neighbouring institutional and recreational facilities. These include Parramatta Gaol, Government House, the Norma Parker Centre and Parramatta Park. All of these sites contain buildings listed by the National Trust and the Australian Heritage Commission, making this one of the richest heritage areas in New South Wales.

All buildings on the site have considerable historical interest, particularly those structures dating back to the initial use of the site as the Female Factory, established by Governor Macquarie. They all provided continuing reminders of the original role and function. Most buildings also have great architectural and aesthetic value.

The collection of buildings built for the Lunatic Asylum in the 1870s through to 1910, are outstanding examples of public architecture. Despite their functional simplicity they manifest handsome exteriors, framing the adjoining courtyards in a pleasant human scale. Building 1A, with its imposing clock tower, contributes a sense of dignity and formality.

The architecture of the precinct generally reflects Victorian, Georgian and Classical Revival notions of grandeur. Each of the buildings from the 1870-1901 period reflects the influence of Colonial and Government Architect's James Barnet and Walter Liberty Vernon, as well as FN Manning, the then Inspector-General for all lunatic asylums in New South Wales.

Internally the buildings were functional and rather austere. The spatial arrangements however clearly expressed the original uses and continue to evoke images of their historical role. The site is also considered to be a potentially rich source of archaeological material (NSW Department of Health Property and Heritage Register, 1992)

6.2.2.1 Statement of Significance - Wisteria Gardens precinct

Wisteria Gardens forms a remarkably intact and impressive representative example of a fine Edwardian landscape within which is an important contemporary residence.

The grounds are particularly notable for their extensive use of benching and ground modelling as a means of focussing attention on the impressive water forms as features of the site – Domain Creek and the Parramatta River.

The grounds also contain a large number of original plantings, including a fine collection of palms and Australian rainforest species. Among the plantings is a Tulipwood (*Harpullia pendula*) that, at this age, is rare in

cultivation in Sydney, an uncommon *Brachychiton* hybrid (Flame Tree and Lacebark) and the extensive use of *Wisteria* spp. That have occasioned the eponymous name of the precinct.

The precinct is historically and physically closely connected with Parramatta Park and is directly associated with a number of important people who have helped shape its surviving form.

6.2.2.2 Gradings of Significant Buildings, Elements and Spaces – Wisteria Gardens

The gradings for the elements of the Wisteria Gardens, the closest element to the MSCP study area, are taken from Table 6-2 and from the CMP (Pemulwy Murphy Alexxi, 2010:357-358).

Table 6-3: Gradings of Elements of Wisteria Gardens Precinct

Element	Date	Grading
IDENTIFIED ITEMS		
Building 23 – Chapel, associated forecourt and structures	1990s	Little
Building 24 – Glengariff, but not large stack and toilet block addition	1906	Exceptional
Building 24 – Glengariff, large stack and toilet block addition	1990s	Intrusive
Remnants of main drive and access road (not car park)		Exceptional
Car parking area		Intrusive
LANDSCAPE ITEMS		
Largely intact major Edwardian landscape design to complement existing Glengariff (sum of all various parts including building, benching, access roads, layout entry, plantings, water)	1900s	Exceptional
Complex of superbly modelled earth benches throughout grounds		Exceptional
Redirection of Domain Creek with distinctive kinks and stone lining (serpentine water course)		Exceptional
Stone and concrete bridge		Moderate
Extant, direct relationship with the main campus (across the River) & Parramatta Park		Exceptional
Direct address to Parramatta River		Exceptional
Sole <i>Harpullia pendula</i> near southern long harbour		Exceptional
Axis from main bay of Glengariff between the <i>Phoenix reclinata</i> clumps to the main Hospital eastern campus		High
Access network of stone-edged roads and paths (including entry from Park & gates)		High
Sandstone plinth and iron palisading between the site and Park		High
Remnant plantings that are contemporary with Glengariff and grounds development		High
Circular 1870 inscribed sandstone feature		High
Concentric rockery at the end of the upper bank east of Glengariff		High
Lychgate as termination of path from precinct near Building 30		High
Sandstone edgings to creek and River		High
Early 20 th century timber pergola remnants at bridge		High

Element	Date	Grading
Pipe frame arbours for <i>Wisteria</i> climbers		Little
Plants attaching to palisade boundary fences		Moderate
Existing white sheds along River edge		Intrusive
Recent hospital buildings impinging on historic setting		Intrusive
Location of buildings 21 and 22 over previous access road		Intrusive
<i>Erythrina</i> and other weedy species colonising the river edge		Intrusive
Recent security fence on bank in front of Glengariff		Intrusive

7. Impact Assessment

7.1 Heritage potentially impacted

As indicated in Section 4 above, there are no built heritage items within the PSB study area. It is, however, located on a ridge above the Cumberland West precinct of the Cumberland District Hospital Group. Therefore, there is potential for a visual impact to those items, in particular to Glengariff/Wisteria House/Wisteria Gardens.

The study area is also within AMU 3070, which has recognised potential for archaeological evidence relating to convict huts, maize farming and the former Government Domain.

7.2 Potential impacts

As indicated in Section 1.2.2 above, the proposal involves the construction of the PSB on the site of an existing five-storey car park and adjacent to the new CASB for Westmead Hospital. It is planned that the new PSB will be of similar height and construction to the CASB.

7.3 Visual impact to Cumberland East

Cumberland East is located approximately 600 metres to the east of the PSB and therefore will not be physically impacted by the construction of the PSB. However, as its landscape is considered to be of heritage significance, the visual impact of the PSB on the Cumberland East precinct is assessed.

Policy 13 in the CMP (2010) notes the following:

Significant views and vistas identified in Section 5.0 of this report should be retained and where possible reinstated in order to enhance the cultural landscape and appreciation of the earlier Masterplanning Schemes and layout of the East Campus and Wisteria Gardens. (Perumal Murphy Alessi et al 2010:391).

The CMP considers the following views and visual connections as significant for Cumberland East:

- To and from Parramatta Park;
- To and From the Female Factory (both were designed to be viewed from the Governor's Domain, the river and Fleet Street);
- Views from the Western Courtyards to the river and Wisteria Gardens;
- Axial view along River Road where there was a visual connection between the Nurses' building and Glengariff;
- Views through access portals of the walled compound;
- Views framed by sandstone ranges;
- Traditional visual connections between the 1900s buildings and the river corridor; and
- The main campus and Wisteria Gardens.

As noted by the CMP, mature vegetation has obscured some of these views and vistas. As such, there is no direct visual corridor between Cumberland East and the PSB, and therefore no visual impact.



Figure 7-1: Photomontage of view of PSB from Cumberland East (Courtesy: Billard Leece Partnerships Pty Ltd).

7.4 Visual impact to Glengariff House/Wisteria House/Wisteria Gardens

This item is a precinct of the State heritage-listed Cumberland Hospitals Group. As noted in Section 6.2.2.2, there are several elements of that precinct have **exceptional, high and moderate** heritage significance. It should be noted that the PSB site is approximately 600 metres to the northwest of the Glengariff/Wisteria Gardens precinct and as such, **none** of the above elements will be disturbed by the proposal.

Significant views are identified in the CMP as being the connections between Wisteria Gardens, Glengariff and the Cumberland East Precinct (Perumal Murphy Alessi et al. 2010: 378). The PSB is located to the west of Glengariff and the Wisteria Gardens. It should be noted that although visible from Glengariff, the view corridors toward the PSB are not identified as significant.

The PSB is planned to be 15 levels with a helipad on the roof with a maximum height of 86.45 (Figure 7-2). There are several treatments to the external finishes of the PSB, however the cladding will primarily comprise a custom-made cassette (CMC) system (aluminium sheeting) in powder-coated *Silver Riche* (PC01) and/or *Sable Riche* (PC02). Windows are proposed to be heat-strengthened glass for thermal stress resistance, in *Neutral Silver Grey* (Figure 7-3). Other elements of the building will be in porcelain tile, in *white formentera* (PF02) (with a glazed metallic finish). The lower floors will be clad by porcelain tiles in *Cheyenne Desert*, which has a matt finish (PF01). These will be supported by frames of powder-coated aluminium in *Silver Riche*.

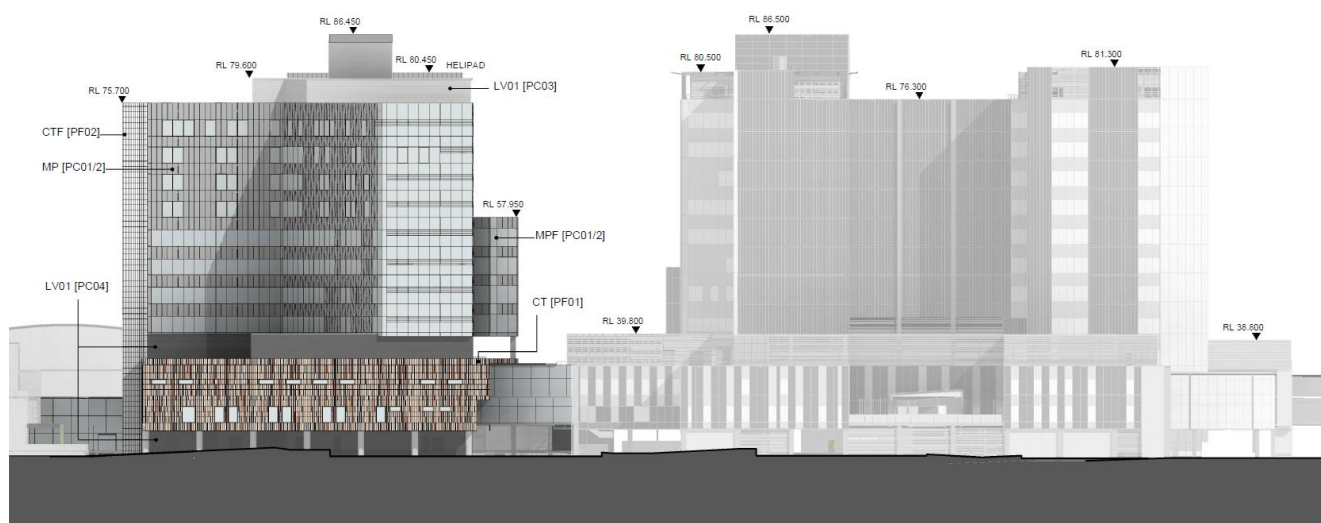


Figure 7-2: PSB (left) in comparison with CASB (right) (see Appendix 1: Elevation Plan).



Figure 7-3: CMC Colours



Figure 7-4: Porcelain tile colours



Figure 7-5: Framing colours

Currently, the CASB is prominent on the ridge when viewed from Glengariff. The addition of the PSB will add to the overall bulk of the intrusive vista on the ridge already represented by the CASB, particularly given the difference in colour and material of both buildings. However, both the PSB and CASB will be at a middle distance. The Wisteria Gardens themselves provide an effective visual buffer, as do to the low-rise, intrusive elements of the Cumberland West precinct. (see Figure 7-6).

Accordingly, although at a relative distance from Glengariff, the bulk and scale of the PSB, particularly viewed together with the existing CASB, will cause a low-moderate visual impact to Glengariff.

It should also be noted that what appears to be a works compound associated with Sydney Metro/Parramatta Light Rail are located on the western boundary of Glengariff, between it and the PSB and CASB (see Figure 7-6). Once this compound is removed, the combined visual impact of the CASB and PSB can be mitigated by the planting of trees that will soften or completely obscure the visual intrusion from Glengariff. It is recommended that trees be planted along that western boundary, in keeping with those already planted at Glengariff.



Figure 7-6: Photomontage looking towards the existing CASB (grey) and the proposed PSB (white) from Glengariff. The low, white buildings in the middle foreground belong to a works compound (Courtesy: Billard Leece Partnership Pty Ltd).

7.5 Impact on Potential Archaeological Deposits

As noted in Section 4.5, AMU 3070 is listed for its potential to contain evidence of agricultural practices by convicts and potentially its use as part of the Government Domain. However, given the nature of previous land use, in particular the construction of the car park currently on site, it is considered unlikely that any archaeological deposits remain.

As noted in the listing, the study area was originally subject to maize cultivation, with several convict huts constructed nearby. In relation to these huts, the listing states:

The direct overlay of the c1791 plan and the current cadastral data suggests that the convict huts were located on the site of the Redbank School and the area between the School and the Marsden Centre. If this is the case, the remains of convicts (sic) huts and associated deposits may survive intact in the landscaped areas.

The Redbank School is located approximately 300 metres to the north west of the PSB site and therefore well outside of the area of disturbance.

The study area was subject to minor disturbance by agriculture associated with the Cumberland Hospital from 1906 and therefore is unlikely to contain significant structural remains in this area. Existing historical aerials indicate that there are no standing structures within the study area until the construction of the CHW (Figure 7-7 to Figure 7-11).

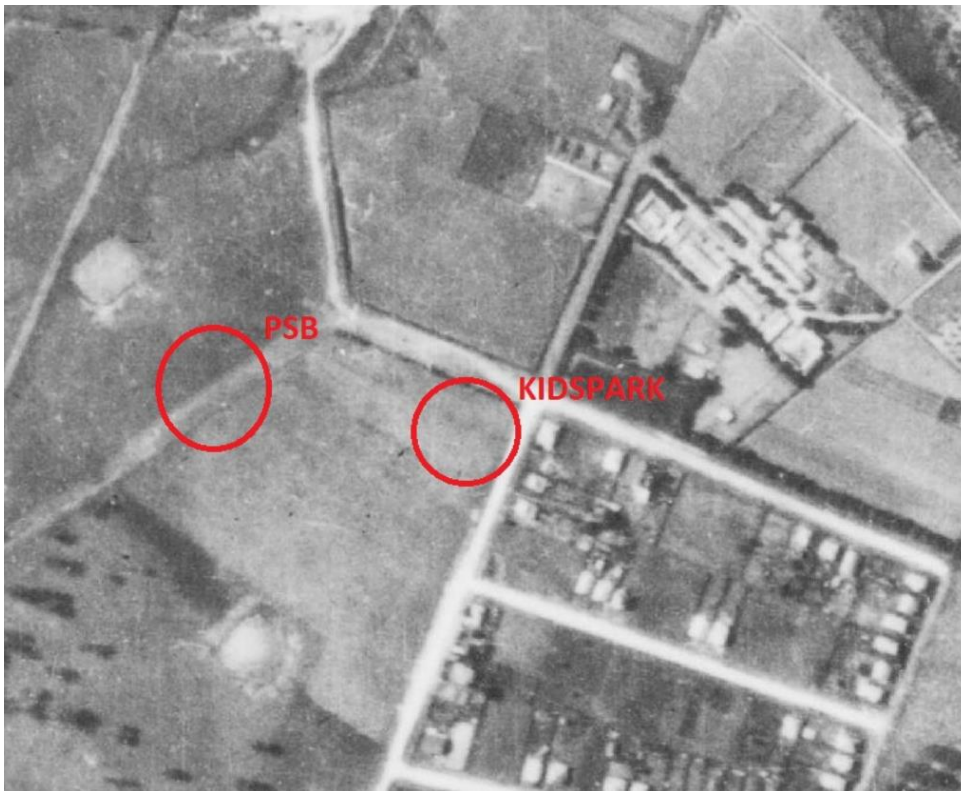


Figure 7-7: Detail of 1930 Aerial of study area, with approximate location of PSB and KIDSPARK circled (Courtesy: Historical Imagery Viewer).

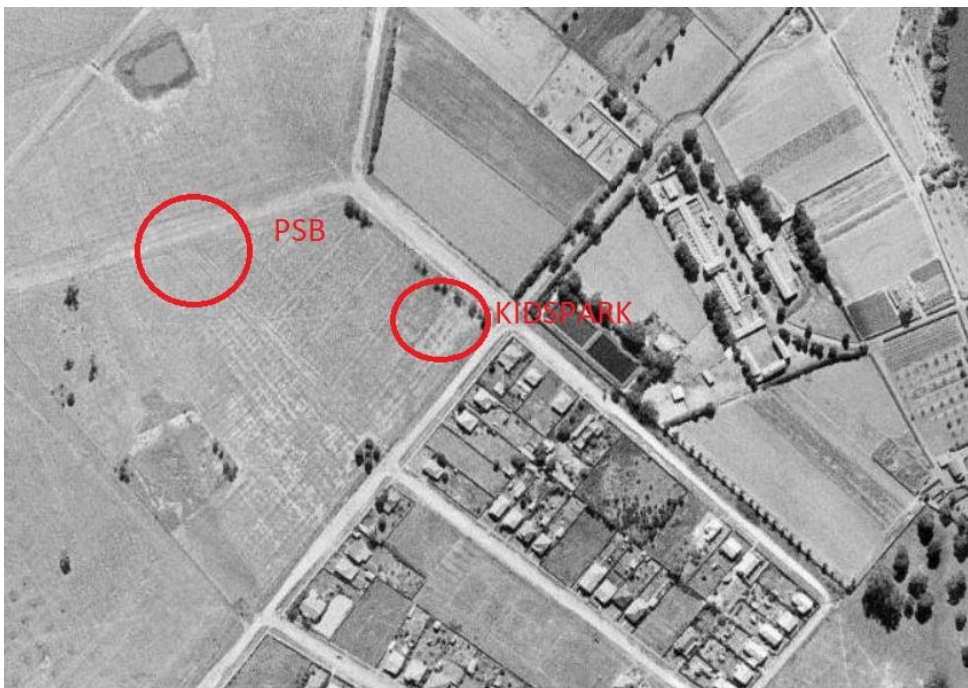


Figure 7-8: Detail of 1943 aerial showing approximate location of PSB and KIDSPARK (Courtesy: Historical Imagery Viewer)

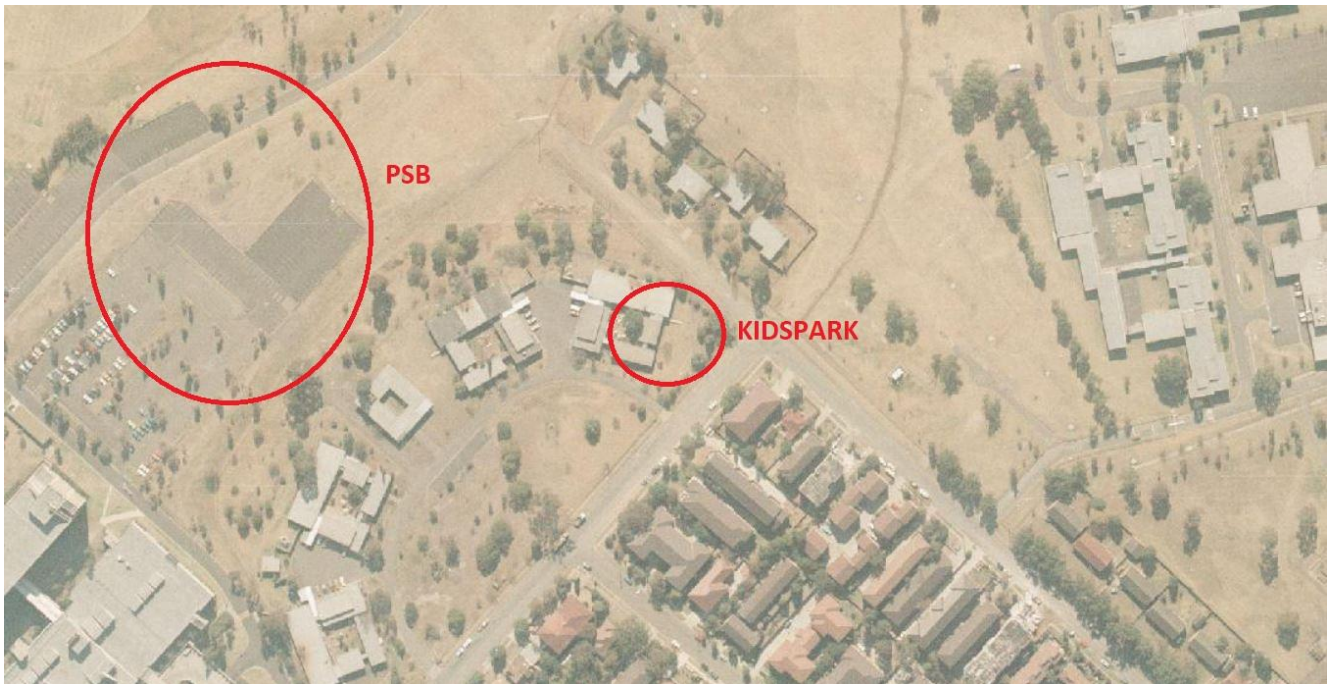


Figure 7-9: Details of 1986 aerial showing approximate location of PSB and KIDSPARK (Courtesy: Historical Imagery Viewer)

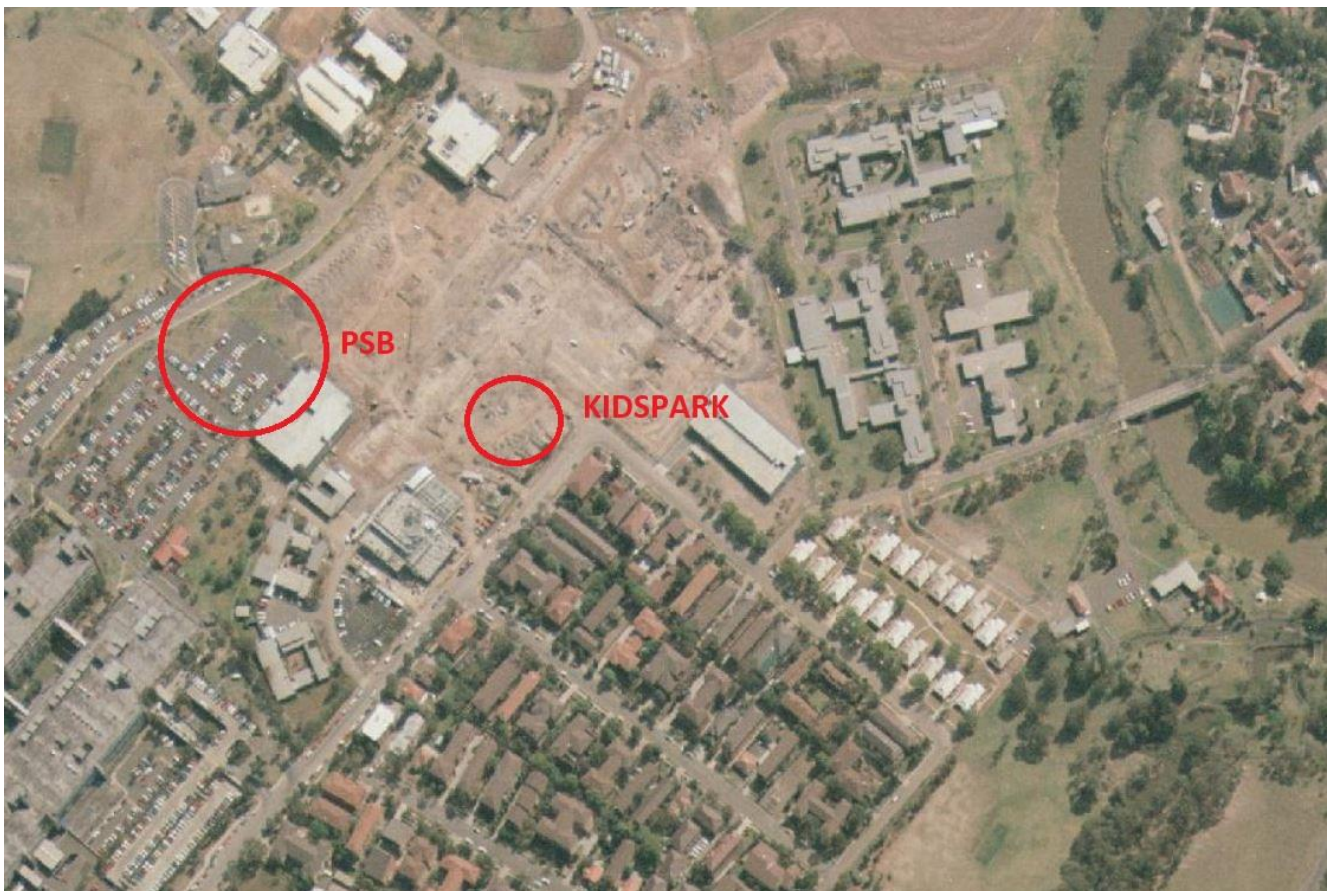


Figure 7-10: Detail of 1991 aerial during construction of the CHW, showing approximate location of PSB and KIDSPARK (Courtesy: Historical Imagery Viewer)



Figure 7-11: Detail of aerial following construction of CHW, showing locations of PSB and KIDSPARK (Courtesy: Historical Imagery Viewer).

The study area is now highly built up with little natural ground surface. The entirety of the study area appears to have been associated with agriculture until the construction of the CHW, at which time substantial ground disturbance occurred, as evidenced by Figure 7-10. It is therefore concluded that following the construction of the existing car park, there is little to no potential for significant non-Aboriginal archaeological deposits to remain within the study area.

However, given the association with convict labour within the study area, while there is little potential for evidence of that era to remain, any remains would be considered to be of high archaeological significance. It is therefore recommended that works be undertaken with an "Unexpected Finds Protocol" in place with appropriate management protocols in place for such evidence.

7.6 Summary

Following the guideline *Statements of Heritage Impact* (Heritage Office and Department of Urban Affairs and Planning, 2003), a summary of the impacts are presented in Table 7-1.

Table 7-1: Summary of impacts

Question	Assessment
How is the impact of the new development on the heritage significance of the item or area to be minimised?	<p>Owing to distance and existing vegetation surrounding the Cumberland District Hospital Group, there is low potential for visual impact to that item.</p> <p>In relation to AMU 3070, previous construction on the site as evidenced by early mapping and aerial photography does not reveal the presence of any built structures. Potential for significant</p>

Question	Assessment
	archaeological deposits to be impacted by the proposal is considered low.
How does the new development affect views to, and from, the heritage item? What has been done to minimise negative effects?	The new development is not within a significant view corridor for Glengariff/Wisteria Gardens, however the combined bulk and scale of the new PSB together with the existing CASB indicates a low-moderate visual impact. Owing to the distance between the PSB/CASB and Glengariff/Wisteria Gardens, this impact can be effectively mitigated or removed through the strategic planting of trees along the boundary to the west of Glengariff/Wisteria Gardens.
Is this development sited on any known, or potentially significant archaeological deposits? If so, have alternative sites been considered? Why were they rejected?	No.
Will the additions visually dominate the heritage item? How has this been minimised?	No.
Will the public, and users of the item, still be able to view and appreciate its significance?	Yes.

7.6.1 Impacts aspects of the proposal

Table 7-2: Impacts by aspects of the proposal

Aspects	Assessment
Aspects of the proposal which respect of enhance the heritage significance of the item or conservation areas	The PSB is located well away from all heritage items.
Aspects of the proposal which could have detrimental impact on heritage significance.	The height of the PSB, together with bulking with CASB and their location on a ridge will have a low-moderate visual impact on Glengariff/Wisteria Gardens. This view corridor, however, is not considered to be a significant view.
Sympathetic alternative solutions which have been considered or discounted.	No sympathetic alternative solutions have been considered.

8. Conclusions and recommendations

A desktop assessment, site inspection, significance and impact assessment conclude that there is likely to be a low-moderate impact by the proposal on Glengariff/Wisteria Gardens, that can be substantially mitigated or eliminated by the planting of appropriate trees. There is little or no likelihood, however to any other impact to any other built heritage item or potential archaeological deposits.

This assessment has been prepared in response to the SEARs provided for this project:

Provide a Statement of Heritage Impact (SoHI) prepared by a suitably qualified heritage consultant in accordance with the NSW Heritage Manual	✓
The SoHI is to address the impacts of the Proposal on the heritage significance of the site and adjacent areas	✓
Identify all heritage items (national, State and local) within the vicinity of the site including built heritage, landscapes and archaeology, detailed mapping of these items and assessment of why the items and site(s) are of heritage significance	✓
Identify compliance with the relevant Conservation Management Plan	✓ (for Cumberland East, Glengariff/Wisteria Gardens)
Identify the impacts of the Proposal on heritage item(s) including visual impacts (including reflectivity and use of materials, and specific considerations to the bulk, height and scale of the building), required BCA and DDA works, new fixtures, fittings and finishes, any modified services	✓
Include a view and visual assessment to illustrate how the proposal impacts on the wider visual setting of the site including on the adjacent heritage items	✓
The attempts to avoid and/or mitigate the impact on the heritage significance or cultural heritage values of the site and the surrounding heritage items	✓
Justification for any changes to the heritage fabric or landscape elements including any options analysis	Not applicable
If the SoHI identifies impacts on potential historical archaeology, an historical archaeological assessment should be prepared by a suitably qualified archaeologist in accordance with the Archaeological Assessment Guidelines (NSW Heritage Office 1996) and Assessing Significance for Historical Archaeological Sites and 'Relics' (NSW Heritage Council of NSW, 2009). This assessment should identify what relics, if any, are likely to be present, assess their significance and consider the impacts from the proposal on this potential archaeological resource. Archaeological testing may be appropriate to confirm potential and to guide proposed strategies to avoid harm to archaeological 'relics'.	✓
Where harm (to potential archaeological resources) is likely to occur, it is recommended that the significance of the relics be considered in determining an appropriate mitigation strategy. If harm cannot be avoided in whole or part, an appropriate Research Design and Excavation Methodology should also be prepared to guide any proposed excavations or salvage program.	Not applicable

The following mitigation and management measures are recommended.

Recommendation 1

It is recommended that, as soon as practicable, suitable trees be planted along the western boundary of Wisteria Gardens in order to mitigate the visual impact of the PSB. The type of trees planted should be in keeping with the

existing significant plantings of the Wisteria Gardens and in keeping with the latest version of the CMP for the Cumberland District Hospital Group.

Recommendation 2

Although considered unlikely, should archaeological material be identified during construction/excavation for the PSB, all works in the area should stop, the area cordoned off and a qualified archaeologist be contacted to assess the significance of the archaeological material. Works should not recommence in that area until a management plan for the deposits is completed.

Recommendation 3

The advice and conclusions of this SoHI has been based on a scope of works and plans dated 16 December 2020. Owing to the proximity of the PSB to the National and State heritage listed Cumberland East precinct, should any substantial change to the design of the PSB be contemplated, this SoHI should be revised to incorporate those changes in design.

References

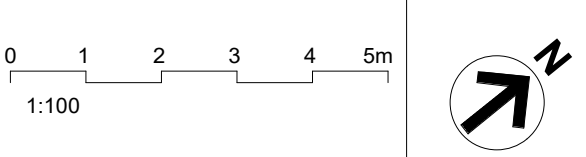
- Casey & Lowe, 2014, Baseline Archaeological Assessment & Statement of Heritage Impact, Historical Archaeology: Cumberland Precinct, Sports & Leisure Precinct, Parramatta North Urban Renewal – Rezoning
- Edward Higginbotham & Associates, 1996 'Historical and Archaeological Assessment of the Cumberland Hospital, Eastern Campus, Fleet Street, Parramatta, NSW'. Unpublished report to Western Sydney Area Health Service.
- Gray, A J, 1966 "Dodd, Henry Edward (?-1791), Australian Dictionary of Biography, National Centre of Biography, Australian National University, accessed on 16 June 2020 from <http://adb.anu.edu.au/biography/dodd-henry-edward-1984>
- Heritage NSW, 2000 "Parramatta Archaeological Management Unit 3070", entry on State Heritage Inventory accessed 7 December 2020 from <https://apps.environment.nsw.gov.au/dpcheritageapp/ViewHeritageItemDetails.aspx?ID=2243070>.
- Jacobs, 2019, Children's Hospital Westmead Stage 2 – Interim Parking, Statement of Heritage Impact, unpublished report to Price Waterhouse Cooper/Health Infrastructure.
- McClymont, J and Kass, T, 2010 "Old Toongabbie and Toongabbie", Dictionary of Sydney, accessed on 23 March 2020 from https://dictionaryofsydney.org/entry/old_toongabbie_and_toongabbie?zoom_highlight=toongabbie.
- Mauldon, V, 2012 "Shaping the Domain: The World Heritage Site Old Government House & Domain at Parramatta Park – The Government Domain, Parramatta 1788-1856", Parramatta Park Trust, Parramatta
- New South Wales Gazette, 'Invalid Establishment, Parramatta'. Issue No. 171, published on 28 December 1849.
- NSW State Archives & Records, undated 'AGY-62/Parramatta Lunatic Asylum (1849-68)/Parramatta Hospital for the Insane (1869-1914)/Parramatta Mental Hospital/Parramatta Psychiatric Centre (1915-1983)/Cumberland Hospital (1983) – 28-12-1849', accessed on 26 November 2020 from https://search.records.nsw.gov.au/primo-explore/fulldisplay?docid=ORGANISATIONS1000184&context=L&vid=61SRA&lang=en_US&search_scope=Everything&adaptor=Local%20Search%20Engine&tab=default_tab&query=any,contains,Parramatta%20Lunatic%20Asylum&offset=0
- Office of Environment & Heritage, 2000 (b) 'Cumberland Hospital – Wisteria Gardens', State Heritage Register Element #00820, accessed on 21 March 2020 from <https://apps.environment.nsw.gov.au/dpcheritageapp/ViewHeritageItemDetails.aspx?ID=5012379>.
- Office of Environment & Heritage, 2015 'Cumberland District Hospital Group', State Heritage Register #00820, accessed 26 November 2020 from <https://www.environment.nsw.gov.au/heritageapp/ViewHeritageItemDetails.aspx?ID=5051959>.
- Perumul Murphy Alessi, Edward Higginbotham & Associates Pty Ltd, Geoffrey Britton and Terry Kass, 2010 *Conservation Management Plan & Archaeological Management Plan: Cumberland Hospital East Campus & Wisteria Gardens*, unpublished report to Sydney West Area Health Service.
- Rappoport Pty Ltd, 2014, *Statement of Heritage Impact – Proposed Ronald McDonald House Adjacent to Redbank Road Entry, Westmead Children's Hospital*, unpublished report to
- RPS, 2015, *Statement of Heritage Impact – Multi Storey Car Park, Westmead Hospital*, unpublished report to Johnstaff/Health Infrastructure.

RPS, 2016, Westmead Redevelopment: Central Acute Services Building, Heritage Assessment, unpublished report to Price Waterhouse Cooper/Health Infrastructure.

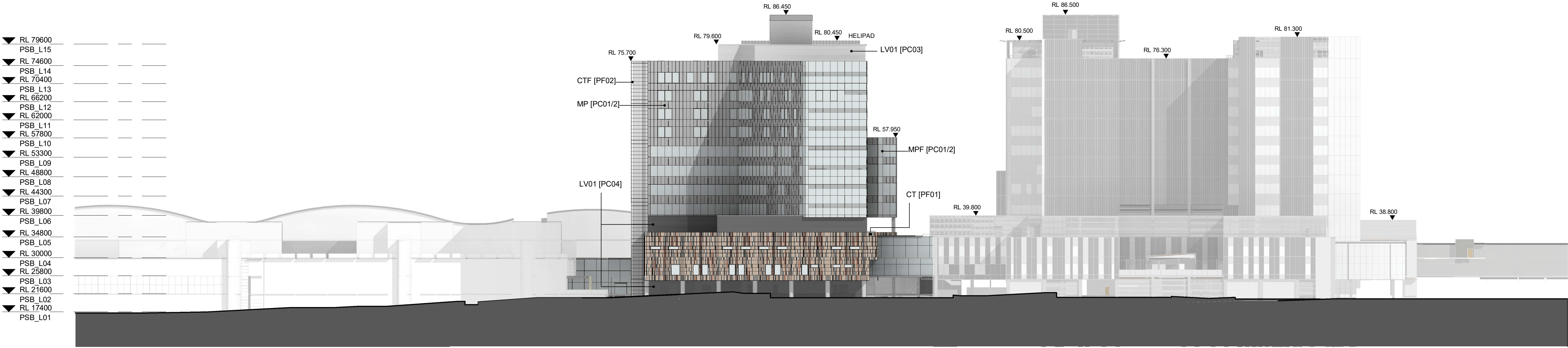
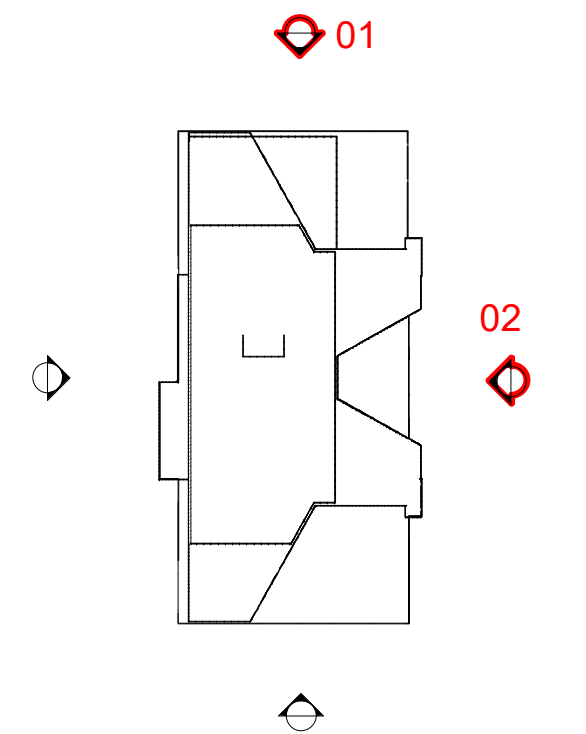
Newspapers

Sydney Morning Herald, "Parramatta", published 1 February 1848

Appendix A. Plans



KEY PLAN



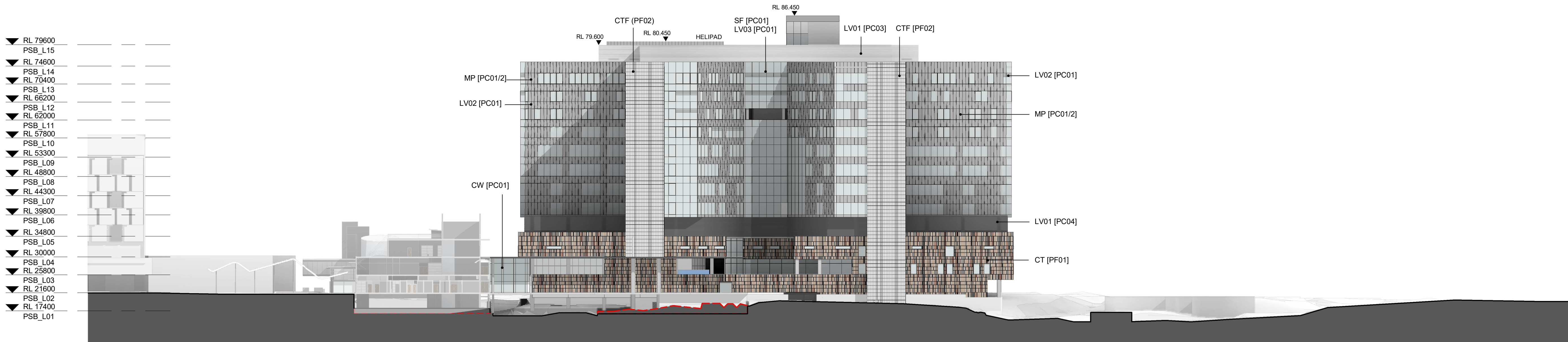
1 NORTH WEST ELEVATION - PROPOSED

1 : 500

EXISTING CHILDREN'S HOSPITAL WESTMEAD

PAEDIATRIC SERVICES BUILDING

CENTRAL ACUTE SERVICES BUILDING



2 NORTH EAST ELEVATION - PROPOSED

1 : 500

CMRI

KIDS PARK

KIDS RESEARCH INSTITUTE

PAEDIATRIC SERVICES BUILDING

REDBANK ROAD

CHILD CARE CENTRE

A ISSUED FOR INFORMATION 16/11/20

REV

MECHANICAL / ELECTRICAL

Wood & Grieve Engineers

Level 6, Building B, 207 Pacific Highway, St Leonards NSW Australia 2065

T +61 2 8484 7000

enquiries.sdy@stantec.com

https://www.stantec.com

CIVIL / STRUCTURE / HYDRAULIC / FIRE

ARUP

Level 5, 151 Clarence Street Sydney, NSW 2000

T +61 2 9320 9320

sydney@arup.com

www.arup.com

PROJECT MANAGER

PricewaterhouseCoopers

One International Towers Sydney Watermans Quay, Barangaroo NSW 2000

T +61 2 8266 0000

www.pwc.com.au

ARCHITECT

Billard Leece Partnership Pty Ltd

Architects & Urban Planners

Level 6, 72-80 Cooper St Sunny Hills NSW 2010

T +61 2 8096 4066

info@blp.com.au

www.blp.com.au

CLIENT

Health Infrastructure NSW

Level 6, 1 Reserve Road St Leonards, NSW 2065

T +61 2 9978 5402

www.hinfra.health.nsw.gov.au

PROJECT

The Children's Hospital at Westmead

Stage 2 Redevelopment

Sheet Name

ELEVATIONS - SHEET 01

Scale

1 : 500@A1

Drawn By

LL

Project No

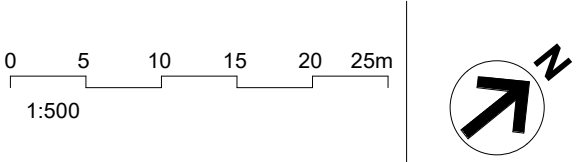
19038

Drawing No

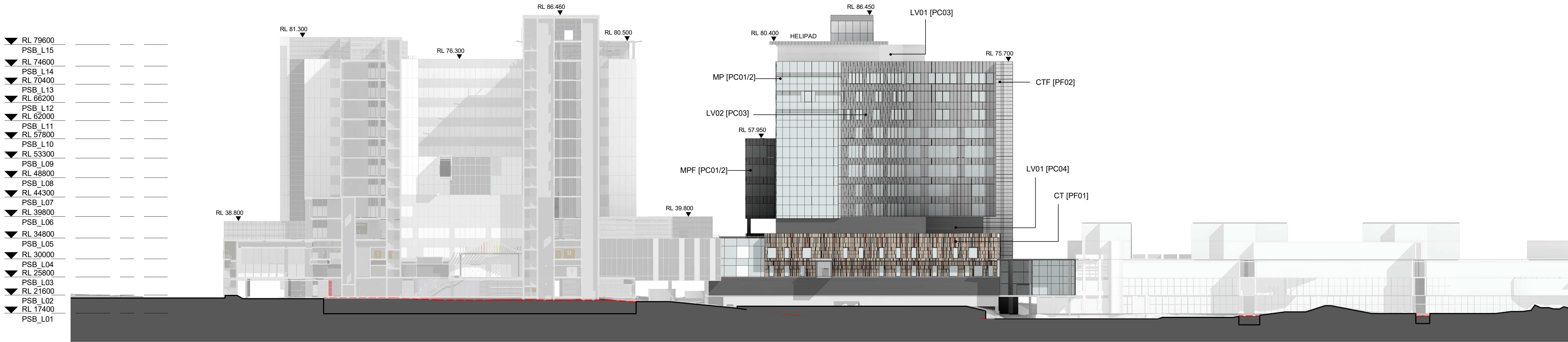
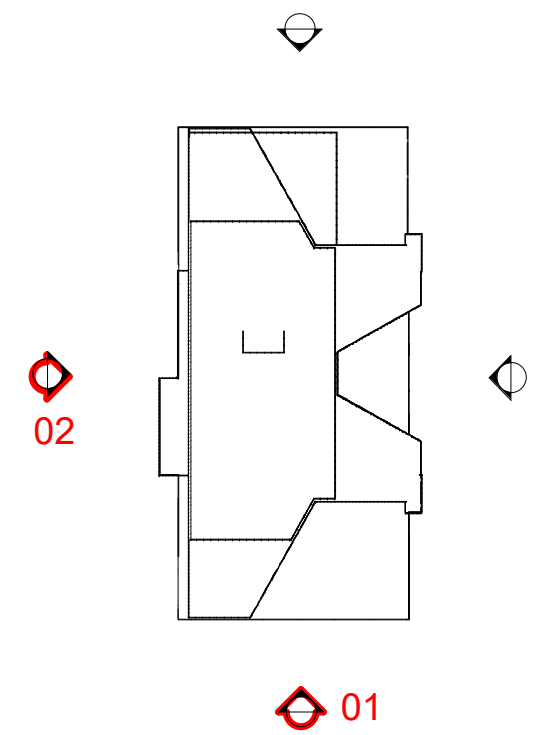
CHW-AR-DG-PSB-SSD030

FOR INFORMATION

BM 980/CHW-Stage 2/CHW-BLP-MDL-APC-PSB-FAC.rvt 17/11/2020 3:20:35 PM



KEY PLAN



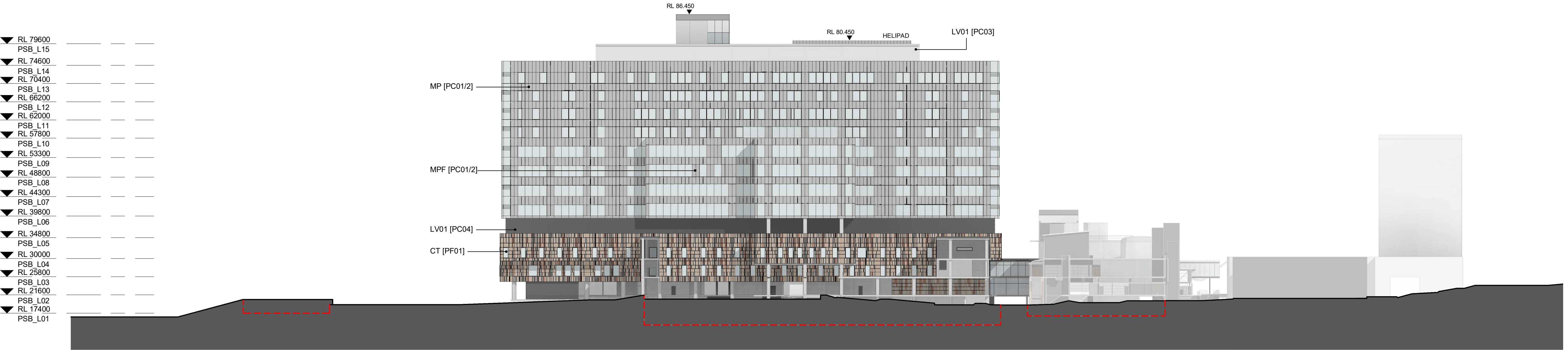
1 SOUTH EAST ELEVATION - PROPOSED

HOSPITAL BOULEVARDE

CENTRAL ACUTE SERVICES BUILDING

PAEDIATRIC SERVICES BUILDING

EXISTING CHILDREN'S HOSPITAL WESTMEAD



2 SOUTH WEST ELEVATION - PROPOSED

REDBANK ROAD

PAEDIATRIC SERVICES BUILDING

KIDS RESEARCH INSTITUTE

KIDS WAY

CMRI

A ISSUED FOR INFORMATION 16/11/20

REV

MECHANICAL / ELECTRICAL

Wood & Grieve Engineers

Level 6, Building B, 207 Pacific Highway, St Leonards NSW Australia 2065

T +61 2 8484 7000

enquiries.sdy@stantec.com

https://www.stantec.com

CIVIL / STRUCTURE / HYDRAULIC / FIRE

ARUP

Level 5, 151 Clarence Street Sydney, NSW 2000

T +61 2 9320 9320

sydney@arup.com

www.arup.com

PROJECT MANAGER

PricewaterhouseCoopers

One International Towers Sydney

Watermans Quay, Barangaroo NSW 2000

T +61 2 8266 0000

www.pwc.com.au

ARCHITECT

Billard Leece Partnership Pty Ltd

Architects & Urban Planners

Level 6, 72-80 Cooper St

Sunny Hills NSW 2010

T +61 2 8096 4066

info@blp.com.au

www.blp.com.au

CLIENT

Health Infrastructure NSW

Level 6, 1 Reserve Road

St Leonards, NSW 2065

T +61 2 9978 5402

www.hinfra.health.nsw.gov.au

PROJECT

The Children's Hospital at Westmead

Stage 2 Redevelopment

Sheet Name

ELEVATIONS - SHEET 02

Scale

1 : 500@A1

Date

16/11/20

Drawn By

LL

Checked By

AF

Revision

A

Project No

19038

Drawing No

CHW-AR-DG-PSB-SSD031

FOR INFORMATION

BM 360/CHW-Stage 2/CHW-BLP-MDL-ATC-PSB-FAC.rvt 17/11/2020 3:40:39 PM

