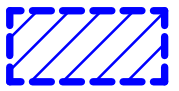

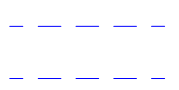







LEGEND

-  EXTENT OF SSD SCOPE
-  EXISTING STORMWATER EASEMENT
-  EXISTING ELECTRICITY EASEMENT
-  PEDESTRIAN ACCESS
-  BOUNDARY LINE
-  EXISTING BUILDING NAME

GRAY PUKSAND

**DISCLAIMER**  
This document may not be secure, may be corrupted in transmission or due to software incompatibility and/or may be amended or altered by third parties after leaving Gray Puksand's possession.  
Gray Puksand is not responsible for and accepts no liability for such matters. Subject only to any conflicting provision within any prior binding agreement, by Gray Puksand (which agreement may also contain additional conditions relating to this document and its use):  
1. The content of this document is confidential and copyright in it belongs to Gray Puksand. They are permitted only to be opened, read and used by the addressee.  
2. All users of this document must carry out all relevant investigations and must examine, take advice as required and satisfy themselves concerning the contents, correctness and sufficiency of the attachment and its contents for their purposes.  
3. To the extent permitted by law, all conditions and warranties concerning this document or any use to which they may be put (whether as to quality, outcome, fitness, care, skill or otherwise) whether express or implied by statute, common law, equity, trade, custom or usage or otherwise are expressly excluded.  
4. Any person using or relying on document releases indemnifies, and will keep indemnified, Gray Puksand against all claims, liabilities, loss, costs and expenses arising directly or indirectly out of or in connection with such use or reliance including without limitation any misrepresentation, error or defect in this document.  
Contractors to use Architectural drawings for set out.  
Contractors to check & verify all Dimensions on Site prior to Construction/Fabrication. Figured Dimensions take precedence over Scaled Dimensions.  
Any Discrepancies should be immediately referred to the Architect.  
All work to comply with N.C.C. Statutory Authorities & Relevant Australian Standards.  
NSW Nominated Architects Scott Moylan 7147 Craig Saltmarsh 6569

HANSEN YUNCKEN



REV	DESCRIPTION	DATE
A	Issue for SSDA	04-10-2019
B	Issue for SSDA	09-10-2019
C	Issue for SSDA	29-01-2020
D	Issue for SSDA	30-04-2020
E	Issue for SSDA	08-07-2020
F	Issue for SSDA	11-08-2020

PROJECT NO	220014
DRAWN	RD
CHECKED	BH
APPROVED	BH

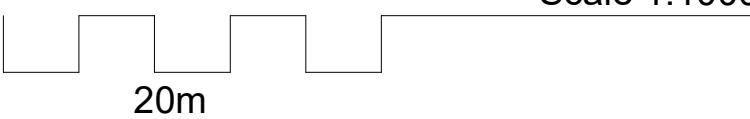
TAFE NSW - Meadowbank  
MTDTH & Multistorey Carpark

SSDA APPROVAL ISSUE

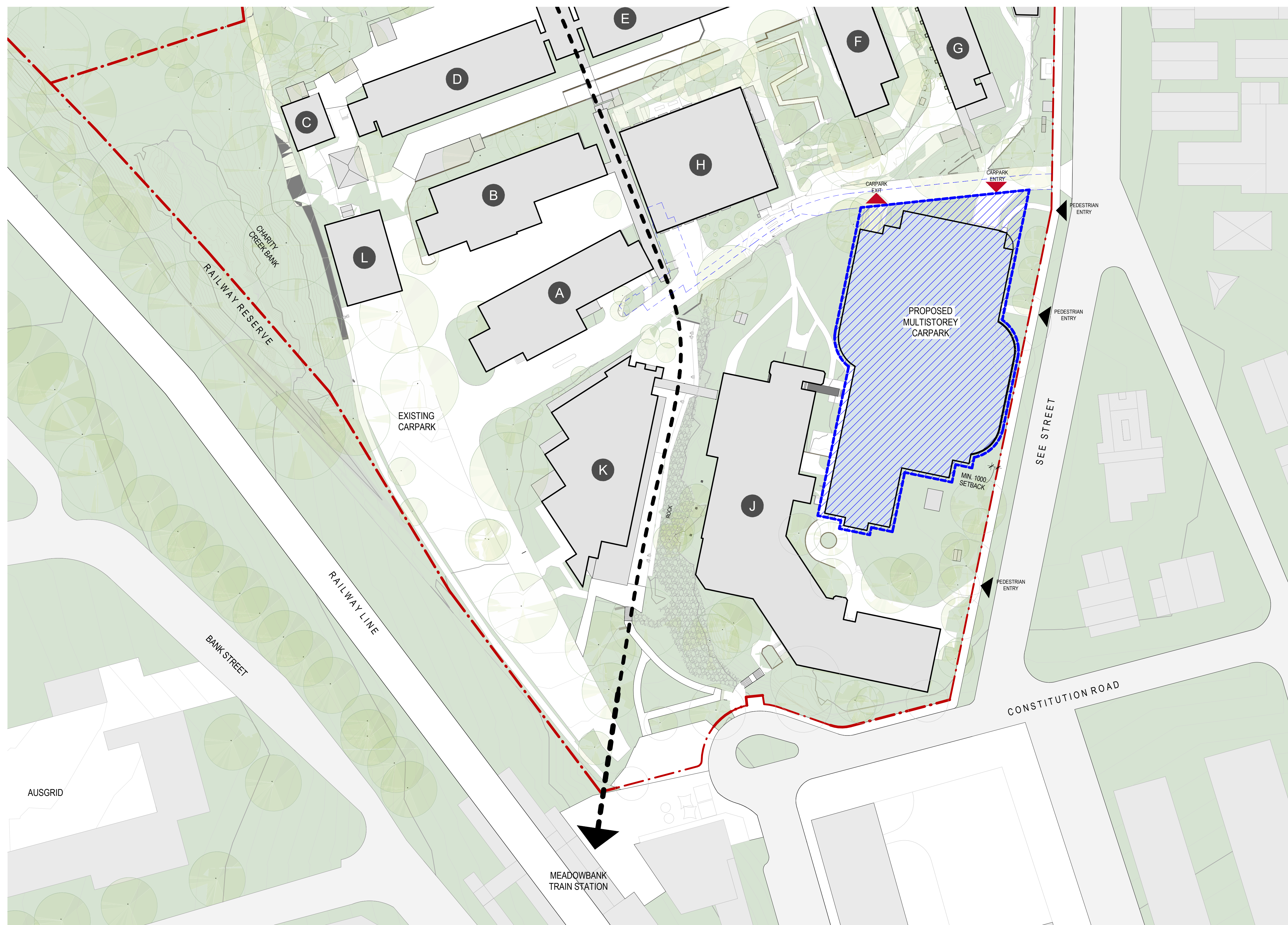
PROPOSED SITE PLAN

DWG #	DA03	REV	F
SCALE @ A1	As indicated		

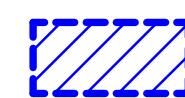
Scale 1:1000



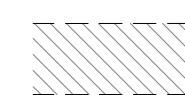




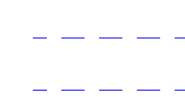
## LEGEND



## EXTENT OF SSD SCOPE



EXISTING STORMWATER  
EASEMENT



## EXISTING ELECTRICITY EASEMENT



## PEDESTRIAN ACCESS



BOUNDARY LINE



EXISTING BUILDING NAME

## GRAY PUKSAND

**DISCLAIMER**

This document may not be secure, may be corrupted in transmission or due to software incompatibility and/or may be amended or altered by third parties after leaving Gray Puksand's possession

Gray Puksand is not responsible for and accepts no liability for such matters. Subject only to any conflicting provision within any prior binding agreement by Gray Puksand (which agreement may also contain additional conditions relating to this document and its use):

1. The content of this document is confidential and copyright in it belongs to Gray Puksand. They are permitted only to be opened, read and used by the addressee.

2. All users of this document must carry out all relevant investigations and must examine, take advice as required and satisfy themselves concerning the contents correctness and sufficiency of the attachment and its contents for their purposes.

3. To the extent permitted by law, all conditions and warranties concerning this document or any use to which they may be put (whether as to quality, outcome, fitness, care, skill or otherwise) whether express or implied by statute, common law, equity, trade, custom or usage or otherwise are expressly excluded.

4. Any person using or relaying document releases indemnifies, and will keep indemnified, Gray Puksand against all claims, liabilities, loss, costs and expenses arising directly or indirectly out of or in connection with such use or reliance including without limitation any misrepresentation, error or defect in this document.

Contractors to use Architectural drawings for set out.  
Contractors to check & verify all Dimensions on Site prior to Construction/Fabrication.  
Figured Dimensions take precedence over Scaled Dimensions.  
Any Discrepancies should be immediately referred to the Architect.  
All work to comply with N.C.C. Statutory Authorities & Relevant Australian Standards.

NSW Nominated Architects Scott Moylan 7147 Craig Saltmarsh 6569

**HANSEN YUNCKEN**



REV	DESCRIPTION	DATE
A	Issue for SSDA	30-04-2020
B	Issue for SSDA	11-08-2020

[illegible]

PROJECT NO	220014
DRAWN	Author
CHECKED	Checker
APPROVED	Approve

**TAFE NSW - Meadowbank**  
MTDTH & Multistorey Carpark

## SSDA APPROVAL ISSUE

### PROPOSED SITE PLAN SOUTH

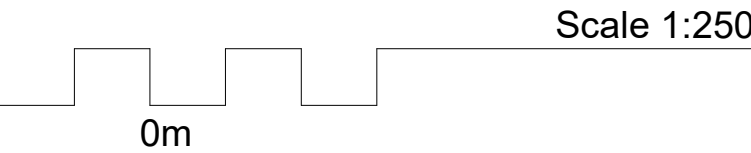
DWG #	<b>DA08</b>	REV	<b>B</b>
SCALE @ A1	As indicated		

Scale 1:500

10m

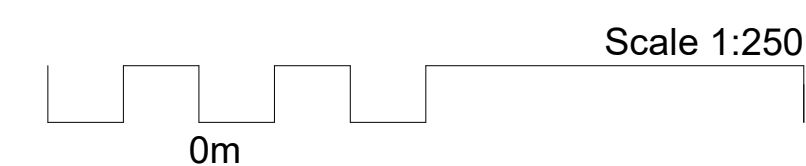






DWG # **DA101** REV **B**  
SCALE @ A1 1 : 200





**DISCLAIMER**

This document may not be secure, may be corrupted in transmission or due to software incompatibility and/or may be amended or altered by third parties after Gray Puskasud has been issued. The possessor's possession does not constitute acceptance.

Gray Puskasud is not responsible for and accepts no liability for such matters. Subject only to any conflicting provision in any prior binding agreement by Gray Puskasud and its customer, the possessor may also contain additional conditions relating to this document and its use).

1. The content of this document is confidential and copyright in it belongs to Gray Puskasud. They are permitted only to be opened, read and used by the addressee.

2. All users of this document must attach all relevant investigations and make reasonable enquiries as to the reliability of the information, its accuracy, correctness and sufficiency of the attachment and its contents for their purposes.

3. To the extent permitted by law, all conditions and warranties concerning this document or its use to which they may put (whether as to quality, outcome, fitness for purpose or otherwise) whether expressly or implied by common law, equity, trade custom or usage or otherwise are expressly excluded.

4. Any person using or relying upon document releases indemnifies, and will keep indemnified, Gray Puskasud from and against all claims, damages, losses and expenses arising directly or indirectly out of or in connection with such use or reliance including without limitation any misrepresentation, error or defect in this document.

Contractors to use Architectural drawings for Scale Dimensions  
The drawings shall be used for reference only and are not to be Construction/Abandonment  
Figure Dimensions Table precedences over Section Dimensions.  
Any discrepancies should be referred to the Project Manager.  
All work to comply with N.C.C. Statutory Authorities & Relevant Australian Standards.

NSW Notarised Architects No. 7147 Craig Stapledon 0699

**TAFE NSW - Meadowbank  
Multi-Story Car Park**

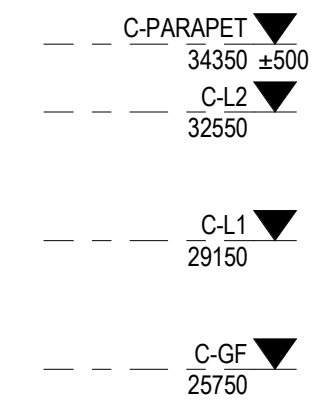
## LEVEL 2 FLOOR PLAN

DWG # **DA102** REV **B**

---

SCALE @ A1 1 : 200





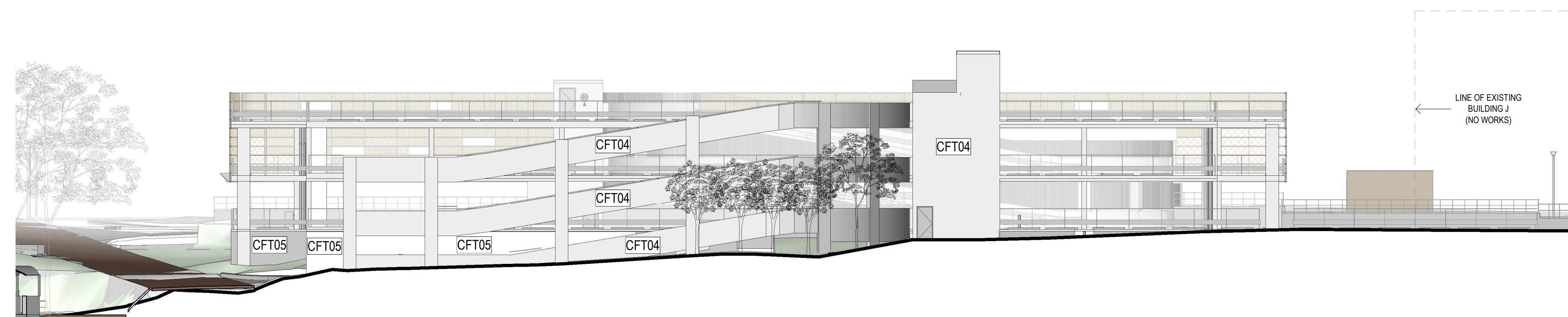
This architectural section drawing illustrates the building's facade and internal structure. The drawing is labeled with several components: CFT01, CFT02, CFT03, CFT04, and CFT05. The building features a multi-story structure with a prominent glass facade. The ground level is marked with a dashed line, and the roof level is indicated by a solid line. The drawing shows the internal layout, including rooms and corridors, and the external structure, including the roof and walls. The building is situated on a sloping site, with a road and trees visible in the background.

— — — C-PARAPET ▼  
34350 ±500

— — — C-L2 ▼  
32550

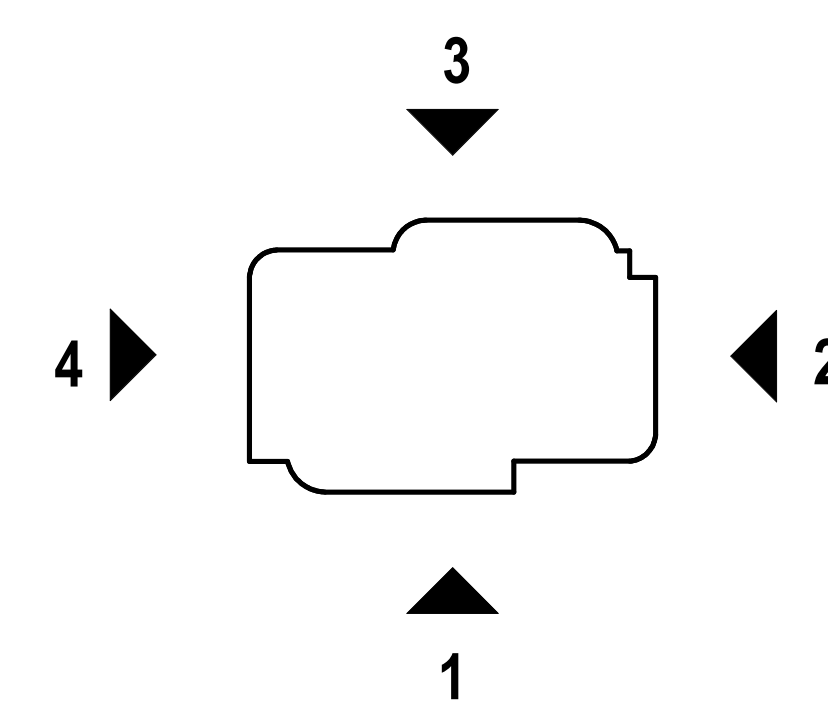
— — — C-L1 ▼  
29150

— — — C-GF ▼  
25750



Architectural elevation drawing of the proposed building complex. The drawing shows a long, low-profile building with a glass facade, labeled CFT01. To the left is an existing brick building labeled "EXISTING BUILDING J (NO WORKS)". To the right is a smaller building labeled CFT02. A large tree is shown behind the building. A callout line points to a section of the building labeled "EXISTING BRICK SHED RETAINED".

— — —	C-PARAPET	▼
	34350 ± 500	
— — —	C-L2	▼
	32550	
— — —	C-L1	▼
	29150	
— — —	C-GF	▼
	25750	



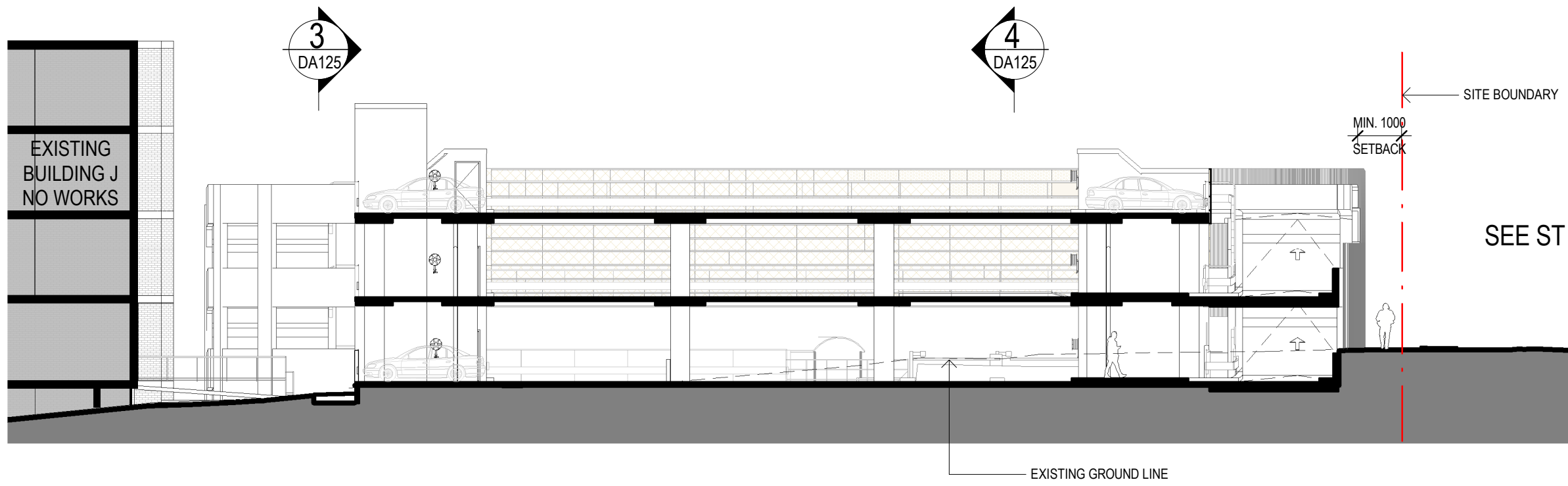
CFT01	PERFORATED METAL SCREEN MIN 50% PERFORATION TOTAL
CFT02	VERTICAL CLADDING BATTENS
CFT03	FOLDED METAL AWNING
CFT04	EXPOSED CONCRETE
CFT05	BLOCKWORK

DWG #	<b>DA120</b>	REV	<b>B</b>
SCALE @ A1	As indicated		

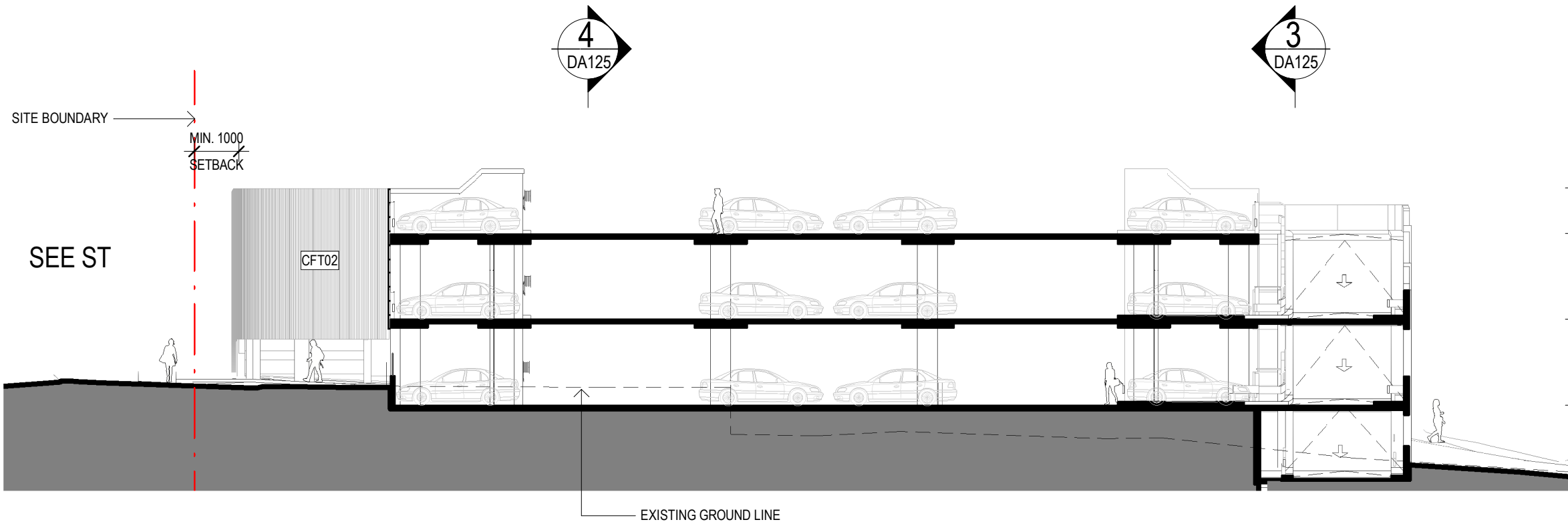
Scale 1:250

0m

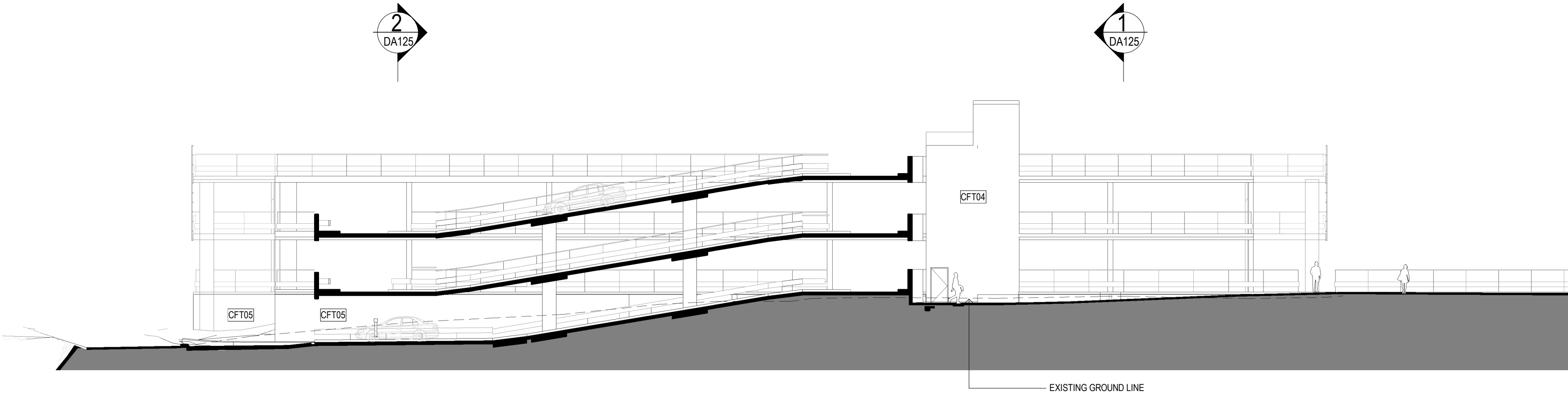




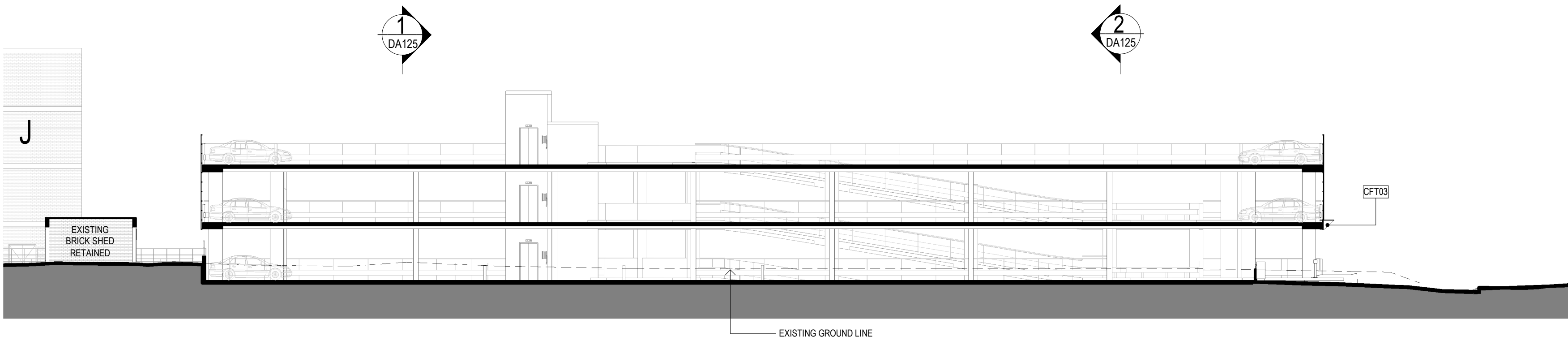
1 WEST-EAST SECTION  
DA100 1 : 200



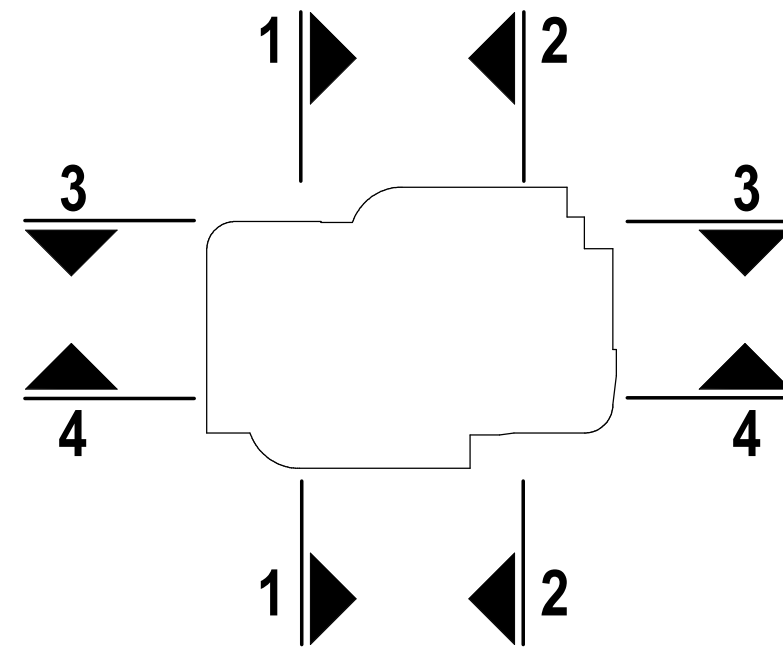
2 WEST-EAST SECTION  
DA100 1 : 200



3 NORTH-SOUTH SECTION  
DA100 1 : 200



4 NORTH-SOUTH SECTION  
DA100 1 : 200



FACADE TYPE LEGEND

CFT01	PERFORATED METAL SCREEN MIN 50% PERFORATION TOTAL
CFT02	VERTICAL CLADDING BATTENS
CFT03	FOLDED METAL AWNING
CFT04	EXPOSED CONCRETE
CFT05	BLOCKWORK

GRAY PUKSAND

**DISCLAIMER**  
This document may not be secure, may be corrupted in transmission or due to software incompatibility and/or may be amended or altered by third parties after leaving Gray Puksand's possession.  
Gray Puksand is not responsible for and accepts no liability for such matters. Subject only to any conflicting provision within any prior binding agreement, by Gray Puksand (which agreement may also contain additional conditions relating to this document and its use):  
1. The content of this document is confidential and copyright in it belongs to Gray Puksand. They are permitted only to be opened, read and used by the addressee.  
2. All users of this document must carry out all relevant investigations and must examine, take advice as required and satisfy themselves concerning the contents, correctness and sufficiency of the attachment and its contents for their purposes.  
3. To the extent permitted by law, all conditions and warranties concerning this document or any use to which they may be put (whether as to quality, outcome, fitness, care, skill or otherwise) whether express or implied by statute, common law, equity, trade, custom or usage or otherwise are expressly excluded.  
4. Any person using or relying on this document releases indemnifies, and will keep indemnified, Gray Puksand against all claims, liabilities, loss, costs and expenses arising directly or indirectly out of or in connection with such use or reliance including without limitation any misrepresentation, error or defect in this document.  
Contractors to use Architectural drawings for set out.  
Contractors to check & verify all Dimensions on Site prior to Construction/Fabrication. Figured Dimensions take precedence over Scaled Dimensions.  
Any Discrepancies should be immediately referred to the Architect.  
All work to comply with N.C.C. Statutory Authorities & Relevant Australian Standards.  
NSW Nominated Architects Scott Moylan 7147 Craig Saltmarsh 6569

HANSEN YUNCKEN



REV	DESCRIPTION	DATE
A	ISSUE FOR SSDA	30-04-20
B	ISSUE FOR SSDA	11-08-20

PROJECT NO	220014
DRAWN	RD / TA
CHECKED	RD
APPROVED	JH

TAFE NSW - Meadowbank Multi-Story Car Park

SSDA APPROVAL ISSUE

SECTIONS

DWG #	DA125	REV	B
SCALE @ A1	As indicated		

