



Meadowbank Campus Multi-Trades and Digital Technology Hub

GRAY PUKSAND



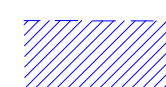
LEGEND



EXISTING STORMWATER
EASEMENT



EXISTING ELECTRICITY
EASEMENT



EXISTING ELECTRICITY
EASEMENT TO BE ABOLISHED



EXISTING RIGHT OF CARRIAGE
TO BE ABOLISHED



EXISTING VEHICULAR ACCESS



BOUNDARY LINE



EXISTING BUILDING NAME

GRAY PUKSAND

DISCLAIMER

This document may not be secure, may be corrupted in transmission or due to software incompatibility and/or may be amended or altered by third parties after leaving Gray Puksand's possession

Gray Puksand is not responsible for and accepts no liability for such matters. Subject only to any conflicting provision within any prior binding agreement by Gray Puksand (which agreement may also contain additional conditions relating to this document and its use):

1. The content of this document is confidential and copyright in it belongs to Gray Puksand. They are permitted only to be opened, read and used by the addressee.

2. All users of this document must carry out all relevant investigations and must examine, take advice as required and satisfy themselves concerning the contents, correctness and sufficiency of the attachment and its contents for their purposes.

3. To the extent permitted by law, all conditions and warranties concerning this document or any use to which they may be put (whether as to quality, outcome, fitness, care, skill or otherwise) whether express or implied by statute, common law, equity, trade, custom or usage or otherwise are expressly excluded.

4. Any person using or relaying document releases indemnifies, and will keep indemnified, Gray Puksand against all claims, liabilities, loss, costs and expenses arising directly or indirectly out of or in connection with such use or reliance including without limitation any misrepresentation, error or defect in this document.

Contractors to use Architectural drawings for set out.
Contractors to check & verify all Dimensions on Site prior to Construction/Fabrication
Figured Dimensions take precedence over Scaled Dimensions.
Any Discrepancies should be immediately referred to the Architect.

NSW Nominated Architects Scott Moxley 7147 Craig Saltmarsh 6569



REV	DESCRIPTION	DATE
A	Issue for SSDA	04.10.19
B	Issue for SSDA	09.10.19

PROJECT NO	219067
DRAWN	RD
CHECKED	BH
APPROVED	BH

TAFE NSW - Meadowbank
Multi-Trades and Digital
Technology Hub

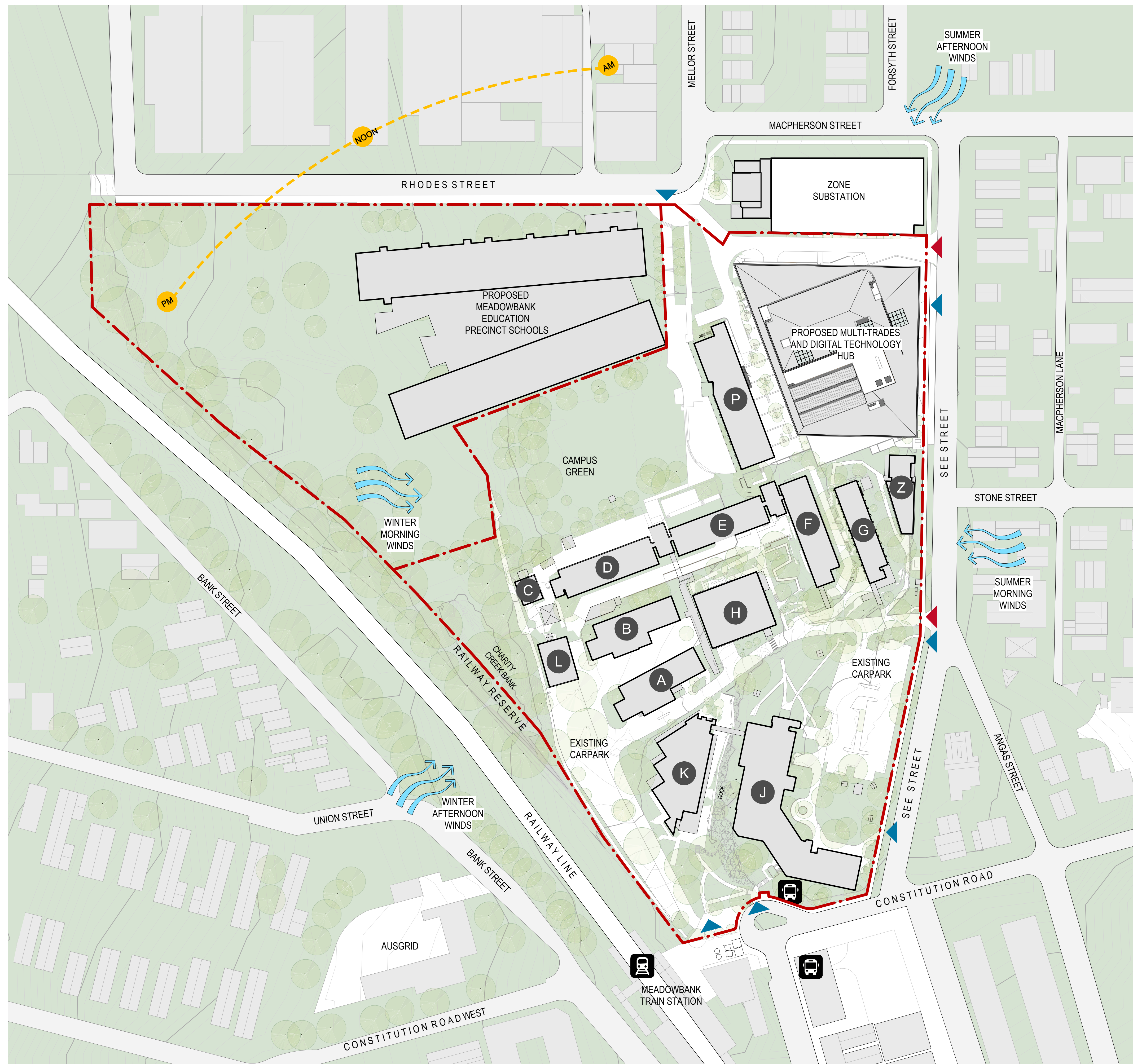
SSDA ISSUE

EXISTING SITE PLAN

DWG # **DA01** REV **B**
SCALE @ A1 As indicated

Scale 1:1000

20m



LEGEND



VEHICULAR ENTRY / EXIT



PEDESTRIAN ENTRY / EXIT



BOUNDARY LINE



EXISTING BUILDING NAME

GRAY PUKSAND

DISCLAIMER

This document may not be secure, may be corrupted in transmission or due to software incompatibility and/or may be amended or altered by third parties after leaving Gray Puksand's possession

Gray Puksand is not responsible for and accepts no liability for such matters. Subject only to any conflicting provision within any prior binding agreement by Gray Puksand (which agreement may also contain additional conditions relating to this document and its use):

1. The content of this document is confidential and copyright in it belongs to Gary Pukсанд. They are permitted only to be opened, read and used by the addressee.
2. All users of this document must carry out all relevant investigations and must examine, take advice as required and satisfy themselves concerning the contents, correctness and sufficiency of the attachment and its contents for their purposes.
3. To the extent permitted by law, all conditions and warranties concerning the document or any use to which they may be put (whether as to quality, outcome, fitness, care, skill or otherwise) whether expressed or implied by statute, common law, equity, trade, custom or usage or otherwise are expressly excluded.
4. Any person using or relying on document releases indemnifies, and will keep indemnified, Gary Pukсанд against all claims, liabilities, loss, costs and expenses arising directly or indirectly from or in connection with the reliance including without limitation any misrepresentation, error or defect in this document.

Contractors to use Architectural drawings for set out.
Contractors to check & verify all Dimensions on Site prior to Construction/Fabrication.
Figured Dimensions take precedence over Scaled Dimensions.
Any Discrepancies should be immediately referred to the Architect.
All work to comply with N.C.C. Statutory Authorities & Relevant Australian Standards.

NSW Nominated Architects Scott Moylan 7147 Craig Saltmarsh 6569



REV	DESCRIPTION	DATE
A	Issue for SSDA	04.10.19
B	Issue for SSDA	09.10.19

PROJECT NO	219067
DRAWN	RD
CHECKED	BH
APPROVED	BH

TAFE NSW - Meadowbank
Multi-Trades and Digital
Technology Hub

SSDA ISSUE

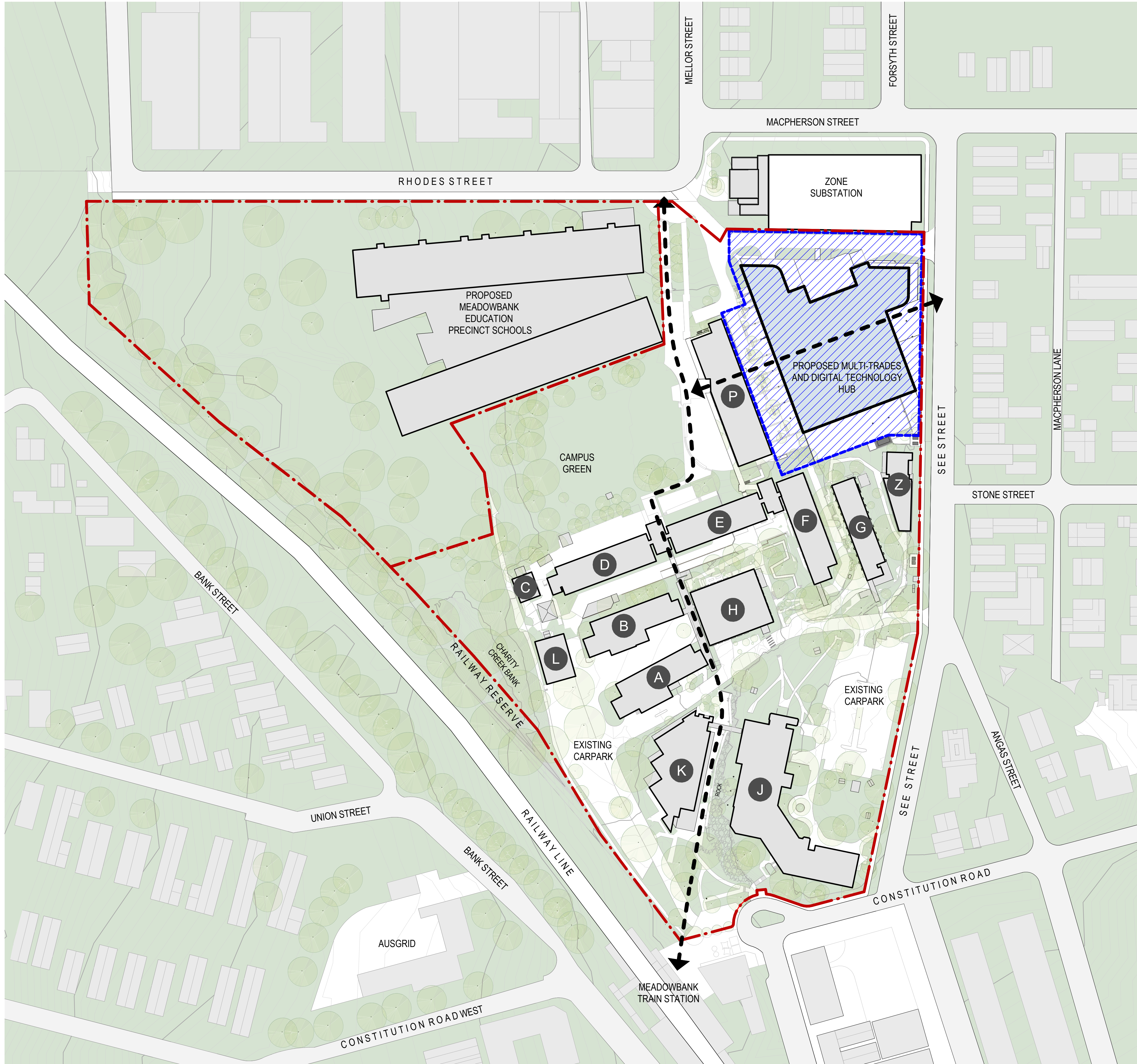
SITE ANALYSIS PLAN

DWG # **DA02** REV **B**

SCALE @ A1 As indicated

Scale 1:1000

20m



LEGEND

- EXTENT OF SSD SCOPE
- PEDESTRIAN ACCESS
- BOUNDARY LINE
- EXISTING BUILDING NAME

GRAY PUKSAND

DISCLAIMER
This document may not be secure, may be corrupted in transmission or due to software incompatibility and/or may be amended or altered by third parties after leaving Gray Puksand's possession.
Gray Puksand is not responsible for and accepts no liability for such matters. Subject only to any conflicting provision within any prior binding agreement by Gray Puksand (which agreement may also contain additional conditions relating to this document and its use):
1. The content of this document is confidential and copyright in it belongs to Gray Puksand. They are permitted only to be opened, read and used by the addressee.
2. All users of this document must carry out all relevant investigations and must examine, take advice as required and satisfy themselves concerning the contents, correctness and sufficiency of the attachment and its contents for their purposes.
3. To the extent permitted by law, all conditions and warranties concerning this document or any use to which they may be put (whether as to quality, outcome, fitness, care, skill or otherwise) whether express or implied by statute, common law, equity, trade, custom or usage or otherwise are expressly excluded.
4. Any person using or relying on this document releases, indemnifies, and will keep indemnified, Gray Puksand against all claims, liabilities, loss, costs and expenses arising directly or indirectly out of or in connection with such use or reliance including without limitation any misrepresentation, error or defect in this document.
Contractors to use Architectural drawings for set out.
Contractors to check & verify all Dimensions on Site prior to Construction/Fabrication. Figured Dimensions take precedence over Scaled Dimensions.
All work to comply with N.C.C. Statutory Authorities & Relevant Australian Standards.
NSW Nominated Architects Scott Moylan 7147 Craig Saltmarsh 6569



REV	DESCRIPTION	DATE
A	Issue for SSDA	04.10.19
B	Issue for SSDA	09.10.19

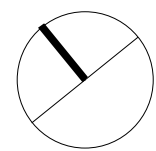
PROJECT NO	219067
DRAWN	RD
CHECKED	BH
APPROVED	BH

TAFE NSW - Meadowbank
Multi-Trades and Digital
Technology Hub

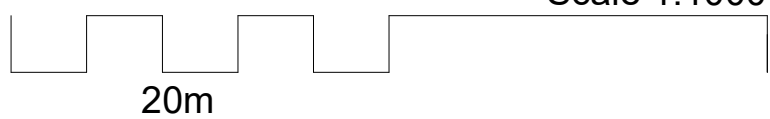
SSDA ISSUE

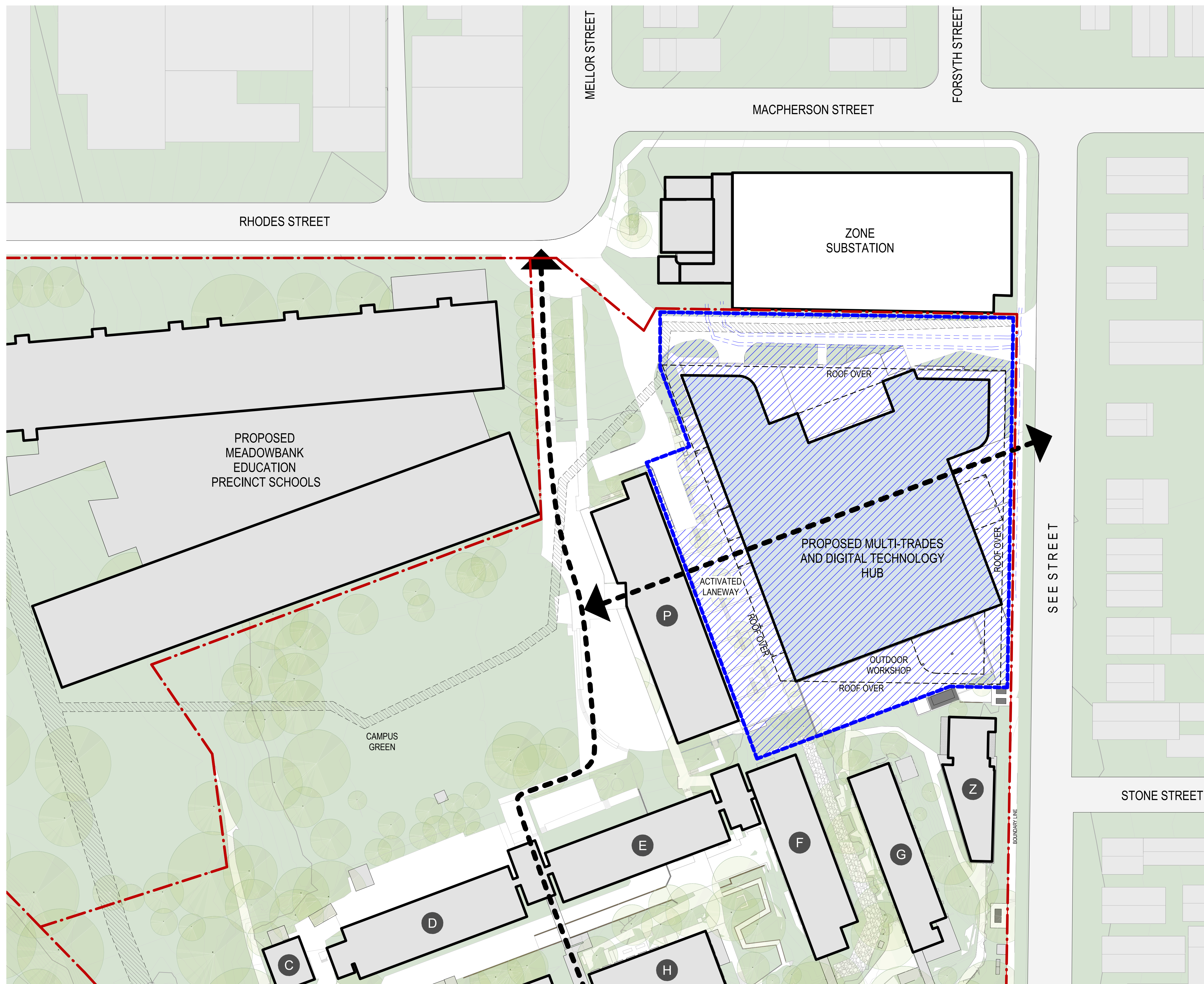
PROPOSED SITE PLAN

DWG #	DA03	REV	B
SCALE @ A1	As indicated		



Scale 1:1000





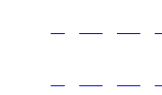
LEGEND



EXTENT OF SSD SCOPE



EXISTING STORMWATER
EASEMENT



EXISTING ELECTRICITY
EASEMENT



PEDESTRIAN ACCESS



BOUNDARY LINE



EXISTING BUILDING NAME

GRAY PUKSAND

DISCLAIMER

This document may not be secure, may be corrupted in transmission or due to software incompatibility and/or may be amended or altered by third parties after leaving Grav PukSand's possession

Gray Puksand is not responsible for and accepts no liability for such matters. Subject only to any conflicting provision within any prior binding agreement by Gray Puksand (which agreement may also contain additional conditions relating to this document and its use).

1. The content of this document is confidential and copyright in it belongs to Gray Puksand. They are permitted only to be opened, read and used by the addressee.

1. The content of this document is confidential and copyright in it belongs to Gray Puksand. They are permitted only to be opened, read and used by the addressee.

1. The content of this document is confidential and copyright in it belongs to Gray Puksand. They are permitted only to be opened, read and used by the addressee.
2. All users of this document must carry out all relevant investigations and must examine, take advice as required and satisfy themselves concerning the contents, correctness and sufficiency of the attachment and its contents for their purposes.

3. To the extent permitted by law, all conditions and warranties concerning this document or any use to which they may be put (whether as to quality, outcome, fitness, care, skill or otherwise) whether express or implied by statute, common law, equity, trade, custom or usage or otherwise are expressly excluded.

4. Any person using or relaying document releases indemnifies, and will keep indemnified, Gray Paks and against all claims, liabilities, loss, costs and expenses arising directly or indirectly out of or in connection with such use or reliance including without limitation any misrepresentation, error or defect in this document.

Contractors to use Architectural drawings for set out.
Contractors to check & verify all Dimensions on Site prior to Construction/Fabrication
Figured Dimensions take precedence over Scaled Dimensions.

Any Discrepancies should be immediately referred to the Architect.
All work to comply with N.C.C. Statutory Authorities & Relevant Australian Standards

NSW Nominated Architects Scott Moylan 7147 Craig Saltmarsh 6569



REV	DESCRIPTION	DATE
A	Issue for SSDA	04.10.19
B	Issue for SSDA	09.10.19

PROJECT NO	219067
DRAWN	RD
CHECKED	BH
APPROVED	BH

TAFE NSW - Meadowbank
Multi-Trades and Digital
Technology Hub

SSDA ISSUE

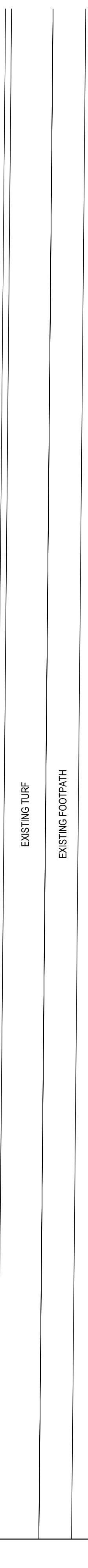
PROPOSED SITE PLAN NORTH

DWG #	DA04	REV	B
SCALE @ A1	As indicated		

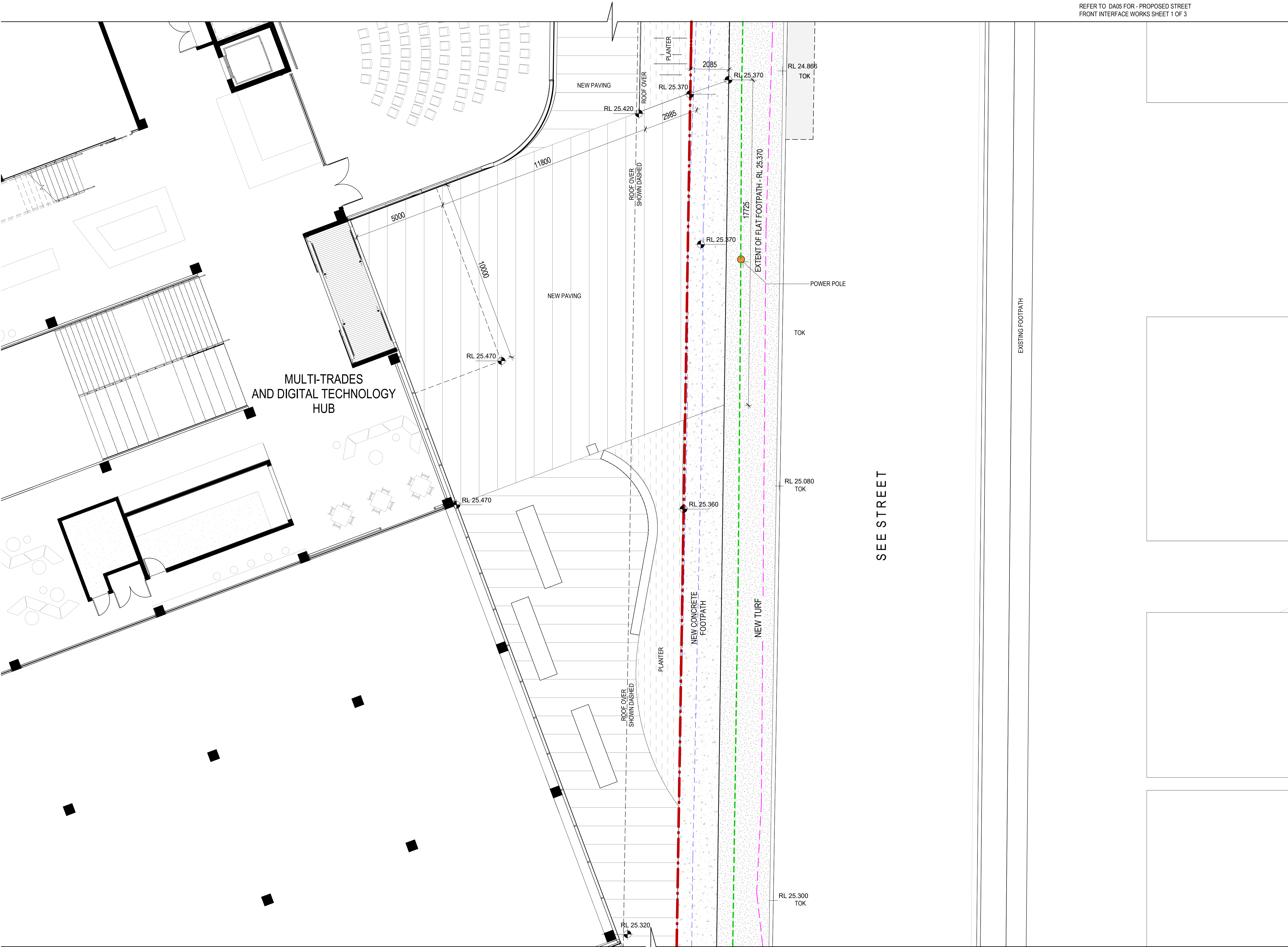
Scale 1:500

Scale 1:50

10m



C:\Users\djym\Documents\219067_TAFE NSW Meadowbank_Site_CENTRAL_R19_SSDA.djym.rvt



REFER TO DA05 FOR - PROPOSED STREET
FRONT INTERFACE WORKS SHEET 1 OF 3

REFER TO DA07 FOR - PROPOSED STREET
FRONT INTERFACE WORKS SHEET 3 OF 3

LEGEND

- NEW ASPHALT ROAD
- PLANTER BED
- NEW PAVED FORECOURT
- NEW TURF
- NEW CONCRETE FOOTPATHS TO COUNCIL SPECIFICATION
- EXISTING ELECTRICAL EASEMENT
- EXISTING STORMWATER EASEMENT
- BOUNDARY LINE
- POWER LINES & COMMS CABLEING OVER
- GAS LINE
- POWER POLE
- TOK = TOP OF KERB
- BUILDING NUMBER
- EXISTING RL
- PROPOSED RL

GRAY PUKSAND

DISCLAIMER

This document may not be secure, may be corrupted in transmission or due to software incompatibility and/or may be amended or altered by third parties after leaving Gray Puksand's possession.

Gray Puksand is not responsible for and accepts no liability for such matters. Subject only to any conflicting provision within any prior binding agreement by Gray Puksand (which agreement may also contain additional conditions relating to this document and its use):

- The content of this document is confidential and copyright in it belongs to Gray Puksand. They are permitted only to be opened, read and used by the addressee.
- All users of this document must carry out all relevant investigations and must examine, take advice as required and satisfy themselves concerning the contents, correctness and sufficiency of the attachment and its contents for their purposes.
- To the extent permitted by law, all conditions and warranties concerning this document or any use to which they may be put (whether as to quality, outcome, fitness, care, skill or otherwise) whether express or implied by statute, common law, equity, trade, custom or usage or otherwise are expressly excluded.
- Any person using or relying on this document releases, indemnifies, and will keep indemnified, Gray Puksand against all claims, liabilities, loss, costs and expenses arising directly or indirectly out of or in connection with such use or reliance including without limitation any misrepresentation, error or defect in this document.

Contractors to use Architectural drawings for set out.
Contractors to check & verify all Dimensions on Site prior to Construction/Fabrication. Figured Dimensions take precedence over Scaled Dimensions.
Any Discrepancies should be immediately referred to the Architect.
All work to comply with N.C.C. Statutory Authorities & Relevant Australian Standards.

NSW Nominated Architects Scott Moylan 7147 Craig Saltmarsh 6569



REV	DESCRIPTION	DATE
A	Issue for SSDA	04.10.19
B	Issue for SSDA	09.10.19

PROJECT NO 219067
DRAWN DL
CHECKED BH
APPROVED BH

TAFE NSW - Meadowbank
Multi-Trades and Digital
Technology Hub

SSDA ISSUE

**PROPOSED STREET FRONT
INTERFACE WORKS - SHEET 2 of 3**

DWG # **DA06** REV **B**
SCALE @ A1 1 : 100

1 PROPOSED STREET FRONT INTERFACE WORKS
SCALE 1 : 100

Scale 1:100
10m

LEGEND

- NEW ASPHALT ROAD
- PLANTER BED
- NEW PAVED FORECOURT
- NEW TURF
- NEW CONCRETE FOOTPATHS TO COUNCIL SPECIFICATION
- EXISTING ELECTRICAL EASEMENT
- EXISTING STORMWATER EASEMENT
- BOUNDARY LINE
- POWER LINES & COMMS CABLING OVER
- GAS LINE
- POWER POLE
- TOK

= TOP OF KERB
- A

BUILDING NUMBER
- EXISTING RL
- PROPOSED RL

GRAY PUKSAND

DISCLAIMER

This document may not be secure, may be corrupted in transmission or due to software incompatibility and/or may be amended or altered by third parties after leaving Gray Puksand's possession

Gray Puksand is not responsible for and accepts no liability for such matters. Subject only to any conflicting provision within any prior binding agreement by Gray Puksand (which agreement may also contain additional conditions relating to this document and its use):

- The content of this document is confidential and copyright in it belongs to Gray Puksand. They are permitted only to be opened, read and used by the addressee.
- All users of this document must carry out all relevant investigations and must examine, take advice as required and satisfy themselves concerning the contents, correctness and sufficiency of the attachment and its contents for their purposes.
- To the extent permitted by law, all conditions and warranties concerning this document or any use to which they may be put (whether as to quality, outcome, fitness, care, skill or otherwise) whether express or implied by statute, common law, equity, trade, custom or usage or otherwise are expressly excluded.
- Any person using or relying on this document releases, indemnifies, and will keep indemnified, Gray Puksand against all claims, liabilities, loss, costs and expenses arising directly or indirectly out of or in connection with such use or reliance including without limitation any misrepresentation, error or defect in this document.

Contractors to use Architectural drawings for set out.
Contractors to check & verify all Dimensions on Site prior to Construction/Fabrication. Figure Dimensions take precedence over Scaled Dimensions.
Any Discrepancies should be immediately referred to the Architect.
All work to comply with N.C.C. Statutory Authorities & Relevant Australian Standards.

NSW Nominated Architects Scott Moylan 7147 Craig Saltmarsh 6569



REV	DESCRIPTION	DATE
A	Issue for SSDA	04.10.19
B	Issue for SSDA	09.10.19

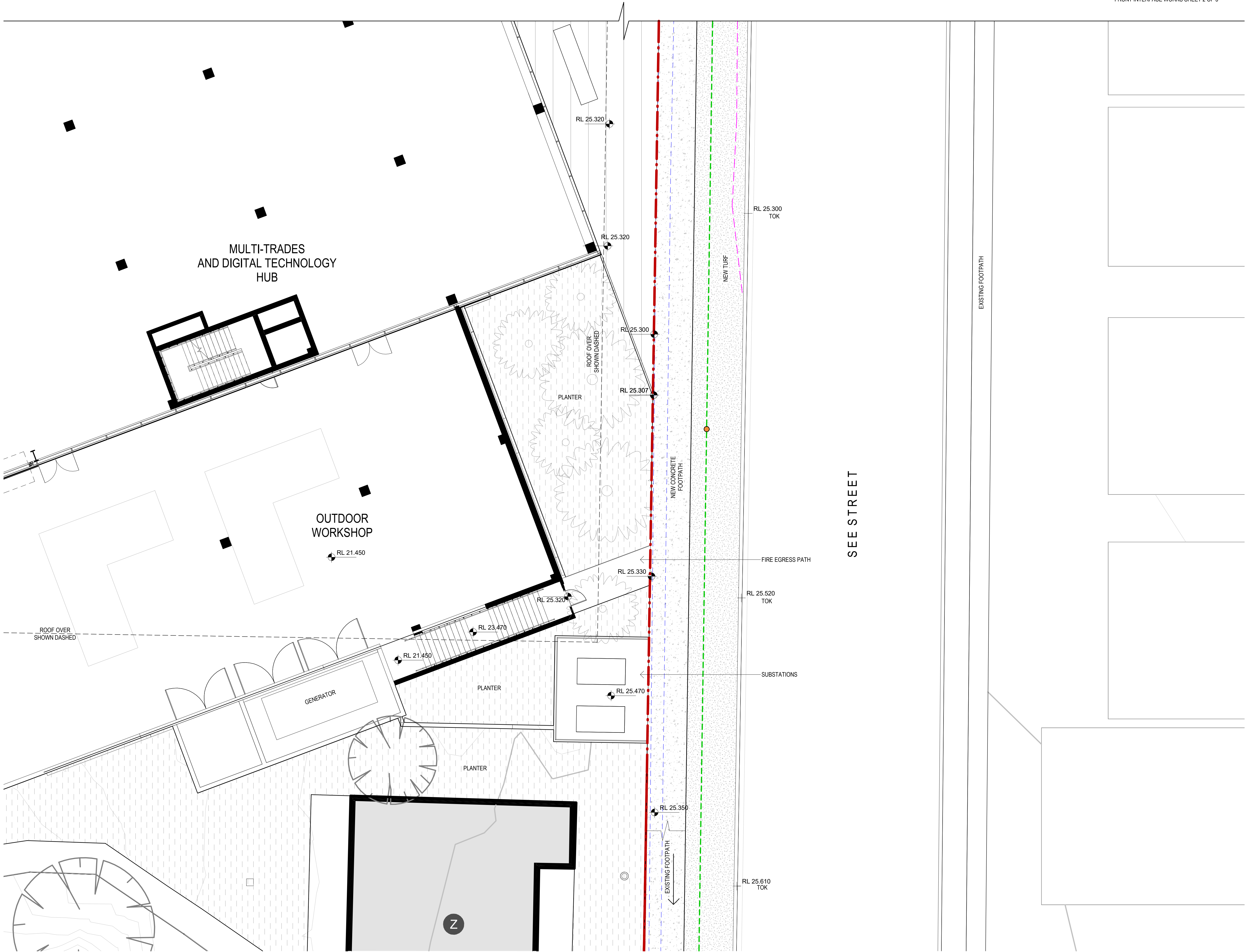
PROJECT NO 219067
DRAWN DL
CHECKED BH
APPROVED BH

TAFE NSW - Meadowbank
Multi-Trades and Digital
Technology Hub

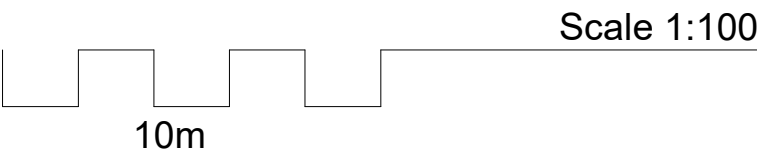
SSDA ISSUE

PROPOSED STREET FRONT
INTERFACE WORKS - SHEET 3 of 3

DWG # DA07 REV B
SCALE @ A1 1 : 100



SEE STREET



C:\Users\botter\Documents\219067_TAFE NSW Meadowbank_Multi Trades Hub_CENTRAL_R19_SSDA_botter.rvt 9/10/2019 9:41:55 AM



- AMENITIES
- APPLIED RESEARCH
- CARPARK
- CARPARK SERVICES
- CIRCULATION
- INDUSTRY ENGAGEMENT
- LEARNING SPACES
- SERVICES
- STORE
- WORKSHOP
- WORKSPACE

GRAY PUKSAND

DISCLAIMER

This document may not be secure, may be corrupted in transmission or due to software incompatibility and/or may be amended or altered by third parties after leaving Gray Puksand's possession.

Gray Puksand is not responsible for and accepts no liability for such matters. Subject only to any conflicting provision within any prior binding agreement, by Gray Puksand (which agreement may also contain additional conditions relating to this document and its use):

- The content of this document is confidential and copyright in it belongs to Gray Puksand. They are permitted only to be opened, read and used by the addressee.
- All users of this document must carry out all relevant investigations and must examine, take advice as required and satisfy themselves concerning the contents, correctness and sufficiency of the attachment and its contents for their purposes.
- To the extent permitted by law, all conditions and warranties concerning this document or any use to which they may be put (whether as to quality, outcome, fitness, care, skill or otherwise) whether express or implied by statute, common law, equity, trade, custom or usage or otherwise are expressly excluded.
- Any person using or relying on this document releases indemnifies, and will keep indemnified, Gray Puksand against all claims, liabilities, loss, costs and expenses arising directly or indirectly out of or in connection with such use or reliance including without limitation any misrepresentation, error or defect in this document.

Contractors to use Architectural drawings for set out.
Contractors to check & verify all Dimensions on Site prior to Construction/Fabrication.
Figured Dimensions take precedence over Scaled Dimensions.
Any Discrepancies should be immediately referred to the Architect.
All work to comply with N.C.C. Statutory Authorities & Relevant Australian Standards.

NSW Nominated Architects Scott Moylan 7147 Craig Saltmarsh 6569



REV	DESCRIPTION	DATE
A	Issue for SSDA	04.10.19
B	Issue for SSDA	09.10.19

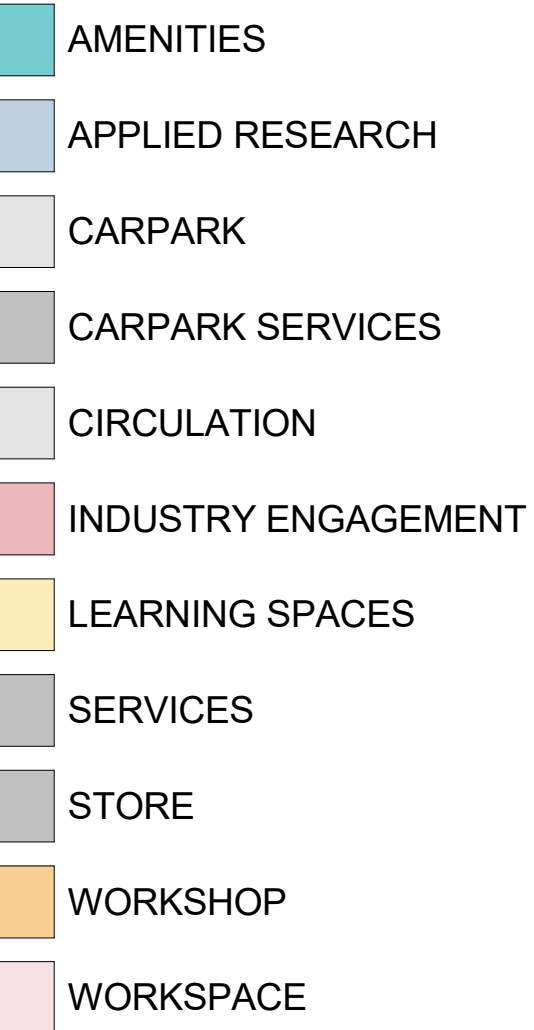
PROJECT NO	219067
DRAWN	HA
CHECKED	RD
APPROVED	BH

TAFE NSW - Meadowbank
Multi-Trades and Digital
Technology Hub

SSDA ISSUE

LEVEL 01 FLOOR PLAN

DWG #	DA11	REV	B
SCALE @ A1	1 : 250		



DISCLAIMER

This document may not be secure, may be corrupted in transmission or due to software incompatibility and/or may be amended or altered by third parties after the date of issue. The provider provides no warranty in this regard.

Gray Puskas is not responsible for and accepts no liability for such matters. Subsequent to any conflicting provision within any prior binding agreement by Gray Puskas and its client, the provider may also contain additional conditions relating to the document and its use.

1. The content of this document is confidential and copyright it belongs to Gray Puskas. They are permitted only to be copied, read and used by the addressee.

2. All users of this document must carry out all relevant investigations and must ensure that the document is not used for any other purpose than that intended. The completeness and sufficiency of the attachment and its contents for their purposes.

3. To the extent permitted by law, all conditions and warranties concerning this document or any use to which they may be put (whether as to quality, outcome, fitness for purpose or otherwise) whether expressly or implied by statute, common law, equity, trade custom or usage otherwise are expressly excluded.

4. Any person using or relying upon document releases indemnifies, and will keep indemnified, Gray Puskas from and against all claims, damages, losses, costs and expenses arising directly or indirectly of or in connection with the use of the document including without limitation any misrepresentation, error or defect in this document.

Contractors to use Architectural drawings for their set out.

Contractors to use Engineering drawings for their set out or for Construction/Installation. Drawing Dimensions take precedence over Scaled Dimensions.

Discrepancies shall be referred to the relevant drawing.

All work to comply with N.C.S. Statutory Authorities & Relevant Australian Standards.

NSW Nominated Architects Scott Moylan 714 Craig Satchell 6569

[illegible]

TAFE NSW - Meadowbank
Multi-Trades and Digital
Technology Hub

SSDA ISSUE

LEVEL 02 FLOOR PLAN

DWG # **DA12** REV **B**
SCALE @ A1 1 : 250



DISCLAIMER

This document may not be secure, may be corrupted in transmission or due to software incompatibility and/or may be appended or altered by third parties after the date of creation.

Gray Puskas is not responsible for and accepts no liability for such matters. Subject only to any conflicting provision within any prior binding agreement by Gray Puskas, the undersigned may also contain additional conditions relating to this document and its use.

1. The content of this document is confidential and copyright it belongs to Gray Puskas. They are permitted only to be opened, read and used by the addressee.

2. All uses of this document must carry out all relevant investigations and must ensure that the use of the document is in accordance with the applicable laws and regulations and the sufficiency of the attachment and its contents for their purposes.

3. To the extent permitted by law, all conditions and warranties concerning this document or any use to which they may be put (whether as a quality, outcome, fitness for purpose, or otherwise) are expressly excluded, including, without limitation, common law, equity, trade custom or usage or otherwise are expressly excluded.

4. Any person using or relating document releases indemnifies, and will keep indemnified, Gray Puskas from and against all claims, damages, losses and expenses arising directly or indirectly out of or in connection with such use or reliance including without limitation any representation, error or defect in this document.

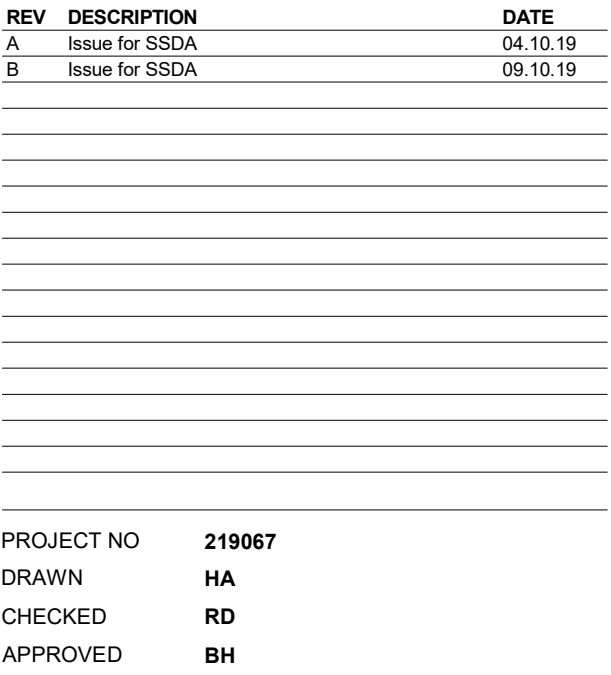
Contractors to use Architectural drawings for Set out only.

Contractors to use Engineering drawings for Set out prior to Construction/Fabrication. Engineering Dimensions take precedence over Set out Dimensions.

Discrepancies shall be referred to the Engineer.

NSI is now comprised with N.C.S. Statutory Authorities & Relevant Australian Standards.

NSW Nominated Architect: Simon Molyneux 7147 Craig Saratnam 6569

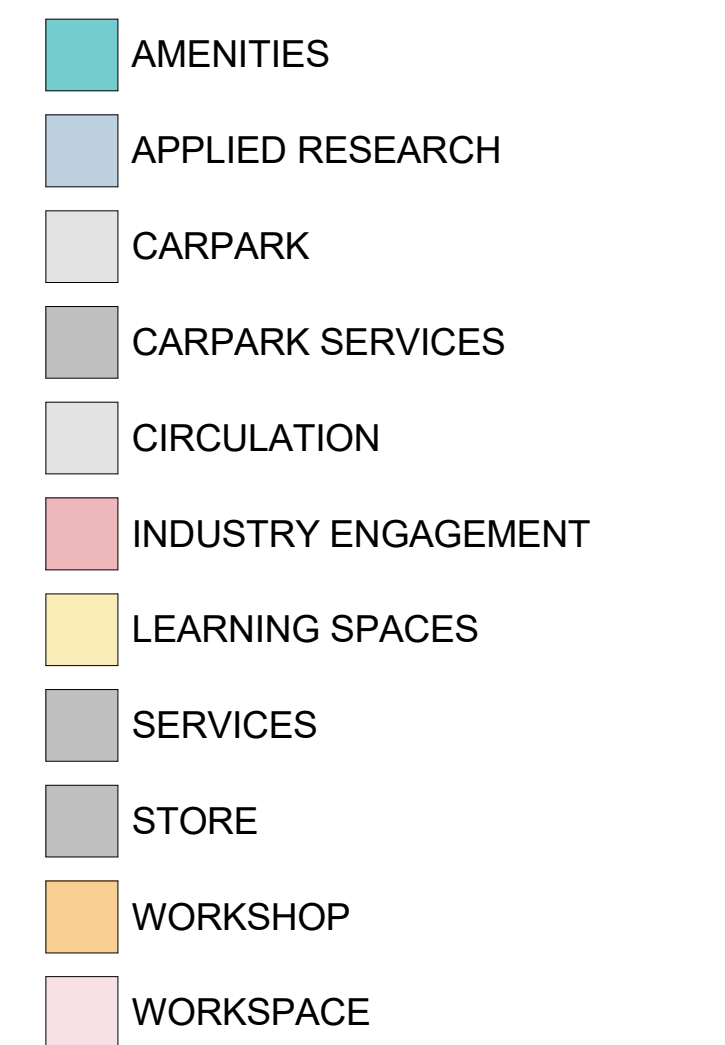


SSDA ISSUE

LEVEL 03 FLOOR PLAN

DWG # **DA13** REV **B**

SCALE @ A1 1 : 250



DISCLAIMER

This document may not be secure, may be corrupted in transmission or due to software incompatibility and/or may be amended or altered by third parties after leaving Gray Puksand's possession

Gray Puksand is not responsible for and accepts no liability for such matters. Subject only to any conflicting provision within any prior binding agreement by Gray Puksand (which agreement may also contain additional conditions relating to this document and its use):

1. The content of this document is confidential and copyright it belongs to Gray Puksand. They are permitted only to be opened, read and used by the addressee.
2. All users of this document must carry out all relevant investigations and must examine take advice as required and satisfy themselves concerning the contents, correctness and sufficiency of the attachment and its contents for their purposes.
3. To the extent permitted by law, all conditions and warranties concerning this document or any use to which they may be put are hereby to quality, outcome, fitness, care, care (or otherwise) whether expressed or implied by statute, common law, equity, trade custom or usage or otherwise are expressly excluded.
4. Any person using or relying on document releases indemnifies, and will keep indemnified, Gray Puksand against all claims, liabilities, loss, costs and expenses arising from or indirectly of its use or reliance on the document (including but not limited without limitation any misrepresentation, error, defect or in this document).

Contractors to use Architectural drawings for set out.
Contractors to check & verify all Dimensions on Site prior to Construction/Fabrication.
Figured Dimensions take precedence over Scaled Dimensions.
Any Discrepancies should be immediately referred to the Architect.
All work to comply with N.C.C. Statutory Authorities & Relevant Australian Standards.

NSW Nominated Architects Scott Moylan 7147 Craig Saltmarsh 6569



REV	DESCRIPTION	DATE
A	Issue for SSDA	04.10.19
B	Issue for SSDA	09.10.19

PROJECT NO	219067
DRAWN	HA
CHECKED	RD
APPROVED	BH

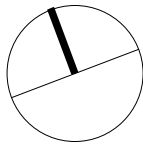
TAFE NSW - Meadowbank
Multi-Trades and Digital
Technology Hub

SSDA ISSUE

LEVEL 04 FLOOR PLAN

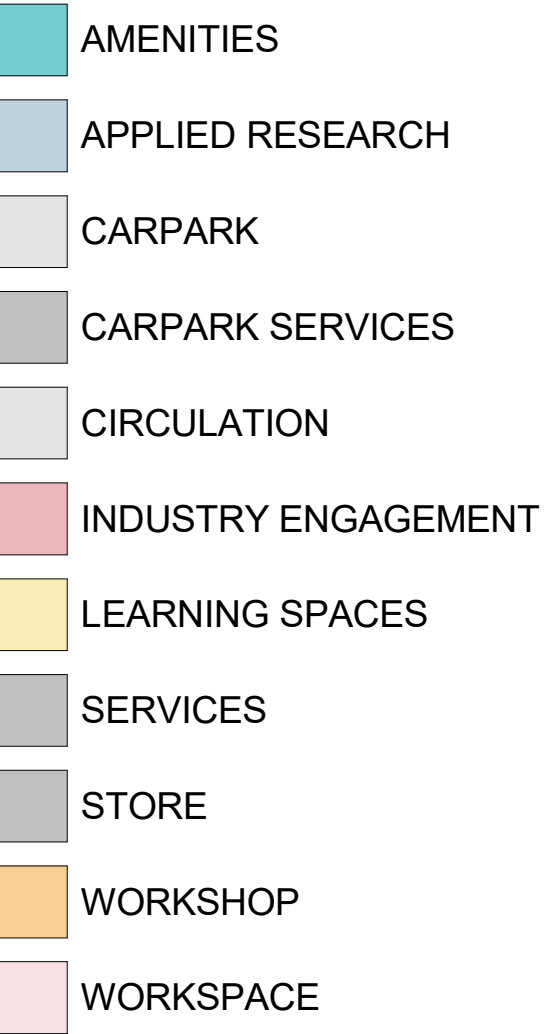
DWG # **DA14** REV **B**

SCALE @ A1 1 : 250



A diagram showing a stepped profile. It consists of three rectangular blocks of equal height and width, arranged side-by-side. The horizontal distance between the start of the first block and the start of the second block is labeled 5m.

- SCALE 1 : 250



DISCLAIMER

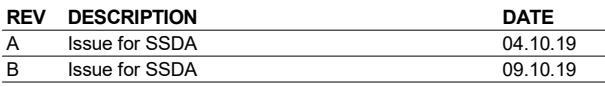
This document may not be secure, may be corrupted in transmission or due to software incompatibility and/or may be amended or altered by third parties after leaving Gray Puksand's possession

Gray Puksand is not responsible for and accepts no liability for such matters. Subject only to any conflicting provision within any prior binding agreement by Gray Puksand (which agreement may also contain additional conditions relating to this document and its use):

1. The content of this document is confidential and copyright in it belongs to Gray Puskasund. They are permitted only to be opened, read and used by the addressee.
2. All users of this document must carry out all relevant investigations and must examine, take advice as required and satisfy themselves concerning the contents, correctness and sufficiency of the attachment and its contents for their purposes.
3. To the extent permitted by law, all conditions and warranties concerning this document or any use to which they may be put (whether as to quality, outcome, fitness, care, skill or otherwise) whether expressed or implied by statute, common law, equity, trade, custom or usage or otherwise are expressly excluded.
4. Any person using or relying upon document releases indemnifies, and will keep indemnified, Gray Puskasund against all claims, liabilities, loss, costs and expenses arising directly or indirectly from the use of the document. This includes without limitation any misrepresentation, error, defect in this document.

Contractors to use Architectural drawings for set out.
Contractors to check & verify all Dimensions on Site prior to Construction/Fabrication.
Figured Dimensions take precedence over Scaled Dimensions.
Any Discrepancies should be immediately referred to the Architect.
All work to comply with N.C.C. Statutory Authorities & Relevant Australian Standards.

NSW Nominated Architects Scott Moylan 7147 Craig Saltmarsh 6563

[illegible]

PROJECT NO 219067

DRAWN HA

CHECKED RD

APPROVED BH

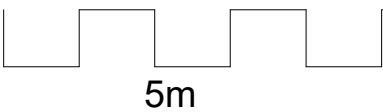
SSDA ISSUE

LEVEL 06 FLOOR PLAN

DWG # **DA16** REV **B**

SCALE @ A1 1 : 250

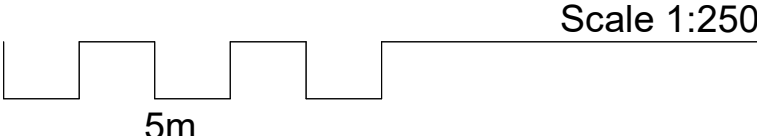
0-1-1-050



C:\Users\botter\Documents\219067_TAFE NSW Meadowbank_Multi Trades Hub_CENTRAL_R19_SSDA_botter.rvt 9/10/2019 9:42:40 AM



1 ROOF PLAN - SSDA
DA20 SCALE 1 : 250



GRAY PUKSAND

DISCLAIMER

This document may not be secure, may be corrupted in transmission or due to software incompatibility and/or may be amended or altered by third parties after leaving Gray Puksand's possession.

Gray Puksand is not responsible for and accepts no liability for such matters. Subject only to any conflicting provision within any prior binding agreement, by Gray Puksand (which agreement may also contain additional conditions relating to this document and its use):

1. The content of this document is confidential and copyright in it belongs to Gray Puksand. They are permitted only to be opened, read and used by the addressee.
2. All users of this document must carry out all relevant investigations and must examine, take advice as required and satisfy themselves concerning the contents, correctness and sufficiency of the attachment and its contents for their purposes.
3. To the extent permitted by law, all conditions and warranties concerning this document or any use to which they may be put (whether as to quality, outcome, fitness, care, skill or otherwise) whether express or implied by statute, common law, equity, trade, custom or usage or otherwise are expressly excluded.
4. Any person using or relying on this document releases indemnifies, and will keep indemnified, Gray Puksand against all claims, liabilities, loss, costs and expenses arising directly or indirectly out of or in connection with such use or reliance including without limitation any misrepresentation, error or defect in this document.

Contractors to use Architectural drawings for set out.
Contractors to check & verify all Dimensions on Site prior to Construction/Fabrication. Figured Dimensions take precedence over Scaled Dimensions.
Any Discrepancies should be immediately referred to the Architect.
All work to comply with N.C.C. Statutory Authorities & Relevant Australian Standards.

NSW Nominated Architects Scott Moylan 7147 Craig Saltmarsh 6569



REV	DESCRIPTION	DATE
A	Issue for SSDA	04.10.19
B	Issue for SSDA	09.10.19

PROJECT NO 219067
DRAWN AM
CHECKED RD
APPROVED BH

TAFE NSW - Meadowbank
Multi-Trades and Digital
Technology Hub

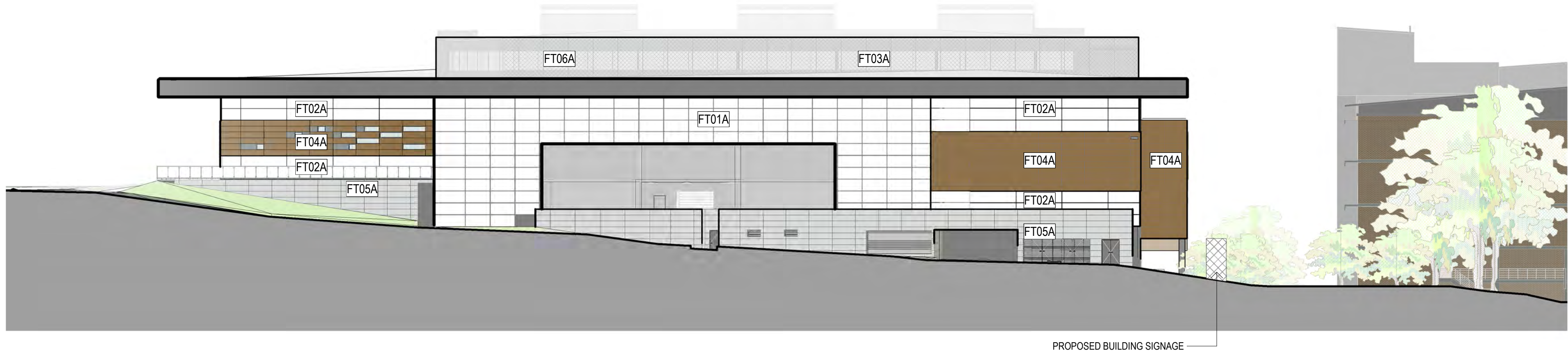
SSDA ISSUE

ROOF PLAN

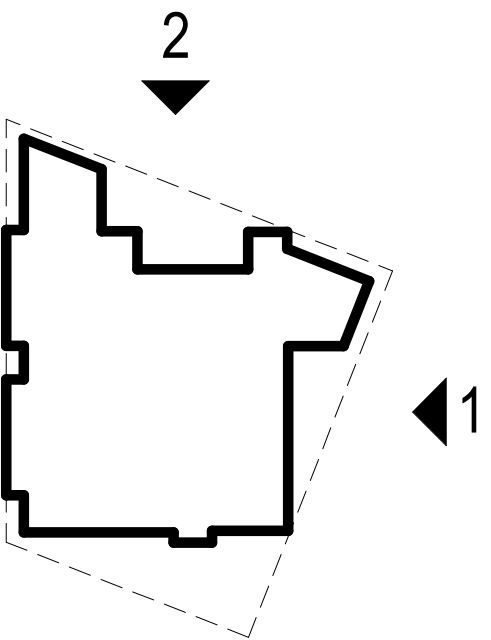
DWG # **DA17** REV **B**
SCALE @ A1 1 : 250



1 EAST ELEVATION
SK190815.01 SCALE 1:250



2 NORTH ELEVATION
SK190815.01 SCALE 1:250



T.O. SKYLIGHT	▼
40.850	
LEVEL 6	▼
33.470	
LEVEL 5	▼
29.470	
LEVEL 4	▼
25.470	
LEVEL 3	▼
21.470	

FACADE TYPE LEGEND

FT01A	- UNITISED PANEL SYSTEM; POWDERCOATED METAL AND GLAZING UNITS
FT02A	- UNITISED PANEL SYSTEM; POWDERCOATED METAL AND STRUCTURALLY BONDED GLAZING
FT03A	- UNITISED SHOPFRONT GLAZING SYSTEM; POWDERCOATED FRAMES
FT04A	- INSULATED RAINSCREEN CLADDING; POWDERCOATED FLATLOCK METAL PANEL SYSTEM
FT05A	- STONE CLADDING (NATURAL OR RECONSTITUTED)
FT06A	- POWDERCOATED PERFORATED METAL MESH SCREEN

GRAY PUKSAND

DISCLAIMER

This document may not be secure, may be corrupted in transmission or due to software incompatibility and/or may be amended or altered by third parties after leaving Gray Puksand's possession

Gray Puksand is not responsible for and accepts no liability for such matters. Subject only to any conflicting provision within any prior binding agreement, by Gray Puksand (which agreement may also contain additional conditions relating to this document and its use):

- The content of this document is confidential and copyright in it belongs to Gray Puksand. They are permitted only to be opened, read and used by the addressee.
- All users of this document must carry out all relevant investigations and must examine, take advice as required and satisfy themselves concerning the contents, correctness and sufficiency of the attachment and its contents for their purposes.
- To the extent permitted by law, all conditions and warranties concerning this document or any use to which they may be put (whether as to quality, outcome, fitness, care, skill or otherwise) whether express or implied by statute, common law, equity, trade, custom or usage or otherwise are expressly excluded.
- Any person using or relying on this document releases indemnifies, and will keep indemnified, Gray Puksand against all claims, liabilities, loss, costs and expenses arising directly or indirectly out of or in connection with such use or reliance including without limitation any misrepresentation, error or defect in this document.

Contractors to use Architectural drawings for set out.
Contractors to check & verify all Dimensions on Site prior to Construction/Fabrication. Figured Dimensions take precedence over Scaled Dimensions.
Any Discrepancies should be immediately referred to the Architect.
All work to comply with N.C.C. Statutory Authorities & Relevant Australian Standards.

NSW Nominated Architects Scott Moylan 7147 Craig Saltmarsh 6569



REV	DESCRIPTION	DATE
A	Issue for SSDA	04.10.19
B	Issue for SSDA	09.10.19

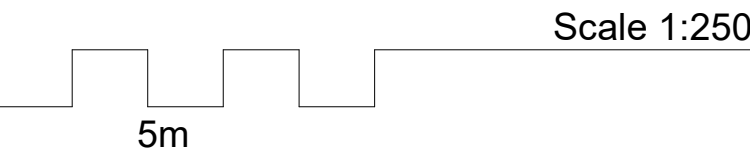
PROJECT NO	219067
DRAWN	AM
CHECKED	RD
APPROVED	BH

TAFE NSW - Meadowbank
Multi-Trades and Digital
Technology Hub

SSDA ISSUE

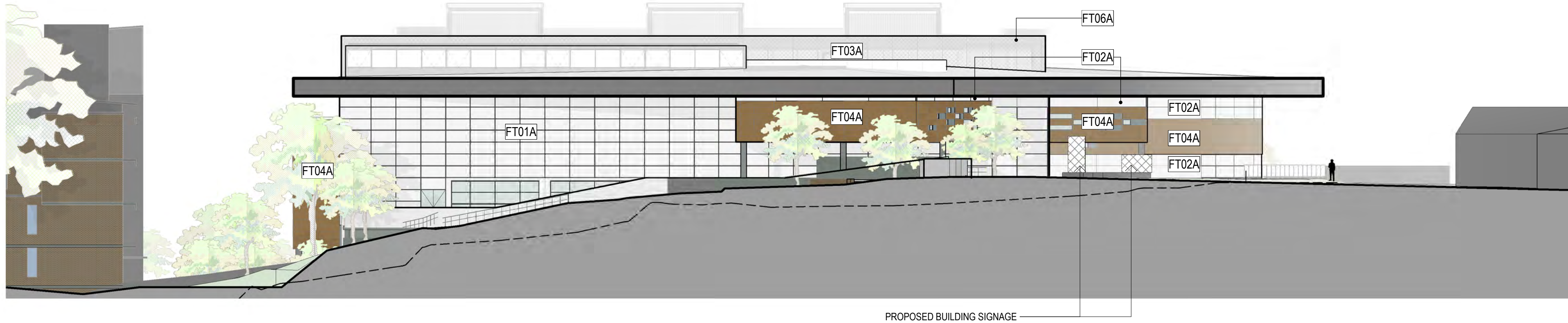
EAST & NORTH ELEVATIONS

DWG #	DA20	REV	B
SCALE @ A1	As indicated		

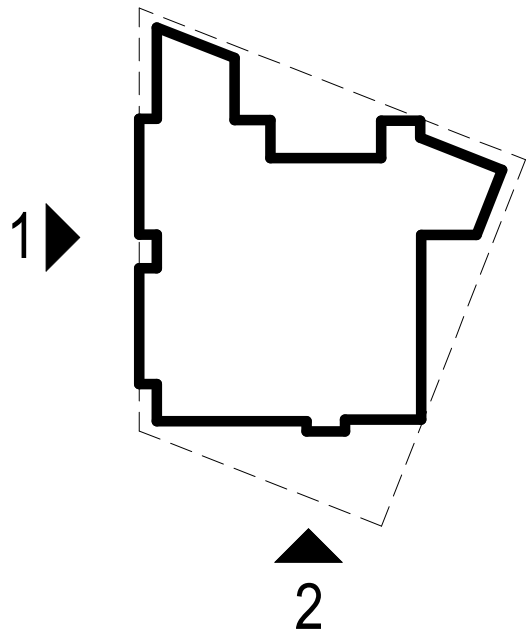




1 WEST ELEVATION
SCALE 1 : 250



2 SOUTH ELEVATION
SCALE 1 : 250



T.O. SKYLIGHT	▼
40.850	
LEVEL 6	▼
33.470	
LEVEL 5	▼
29.470	
LEVEL 4	▼
25.470	
LEVEL 3	▼
21.470	
LEVEL 2	▼
17.870	
LEVEL 1	▼
13.470	
CARPARK LOWER	▼
15.070	

FAÇADE TYPE LEGEND

FT01A	- UNITISED PANEL SYSTEM; POWDERCOATED METAL AND GLAZING UNITS
FT02A	- UNITISED PANEL SYSTEM; POWDERCOATED METAL AND STRUCTURALLY BONDED GLAZING
FT03A	- UNITISED SHOPFRONT GLAZING SYSTEM; POWDERCOATED FRAMES
FT04A	- INSULATED RAINSCREEN CLADDING; POWDERCOATED FLATLOCK METAL PANEL SYSTEM
FT05A	- STONE CLADDING (NATURAL OR RECONSTITUTED)
FT06A	- POWDERCOATED PERFORATED METAL MESH SCREEN

GRAY PUKSAND

DISCLAIMER

This document may not be secure, may be corrupted in transmission or due to software incompatibility and/or may be amended or altered by third parties after leaving Gray Puksand's possession.

Gray Puksand is not responsible for and accepts no liability for such matters. Subject only to any conflicting provision within any prior binding agreement, by Gray Puksand (which agreement may also contain additional conditions relating to this document and its use):

- The content of this document is confidential and copyright in it belongs to Gray Puksand. They are permitted only to be opened, read and used by the addressee.
- All users of this document must carry out all relevant investigations and must examine, take advice as required and satisfy themselves concerning the contents, correctness and sufficiency of the attachment and its contents for their purposes.
- To the extent permitted by law, all conditions and warranties concerning this document or any use to which they may be put (whether as to quality, outcome, fitness, care, skill or otherwise) whether express or implied by statute, common law, equity, trade, custom or usage or otherwise are expressly excluded.
- Any person using or relying on this document releases indemnifies, and will keep indemnified, Gray Puksand against all claims, liabilities, loss, costs and expenses arising directly or indirectly out of or in connection with such use or reliance including without limitation any misrepresentation, error or defect in this document.

Contractors to use Architectural drawings for set out.
Contractors to check & verify all Dimensions on Site prior to Construction/Fabrication. Figured Dimensions take precedence over Scaled Dimensions.
Any Discrepancies should be immediately referred to the Architect.
All work to comply with N.C.C. Statutory Authorities & Relevant Australian Standards.

NSW Nominated Architects Scott Moylan 7147 Craig Saltmarsh 6569



REV	DESCRIPTION	DATE
A	Issue for SSDA	04.10.19
B	Issue for SSDA	09.10.19

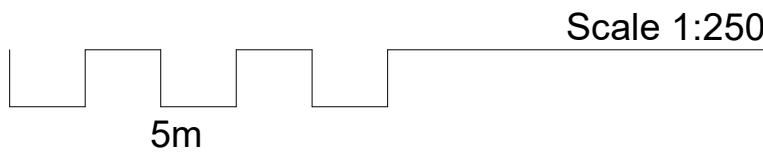
PROJECT NO	219067
DRAWN	AM
CHECKED	RD
APPROVED	BH

TAFE NSW - Meadowbank
Multi-Trades and Digital
Technology Hub

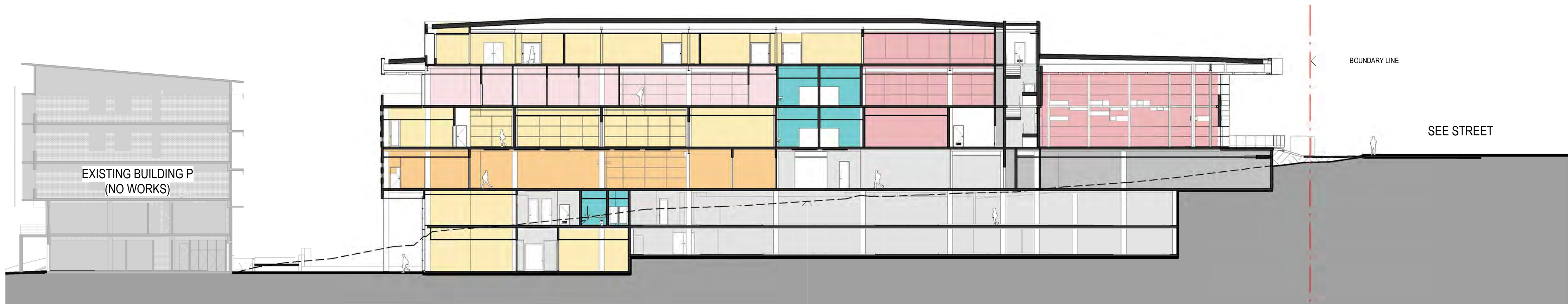
SSDA ISSUE

WEST & SOUTH ELEVATIONS

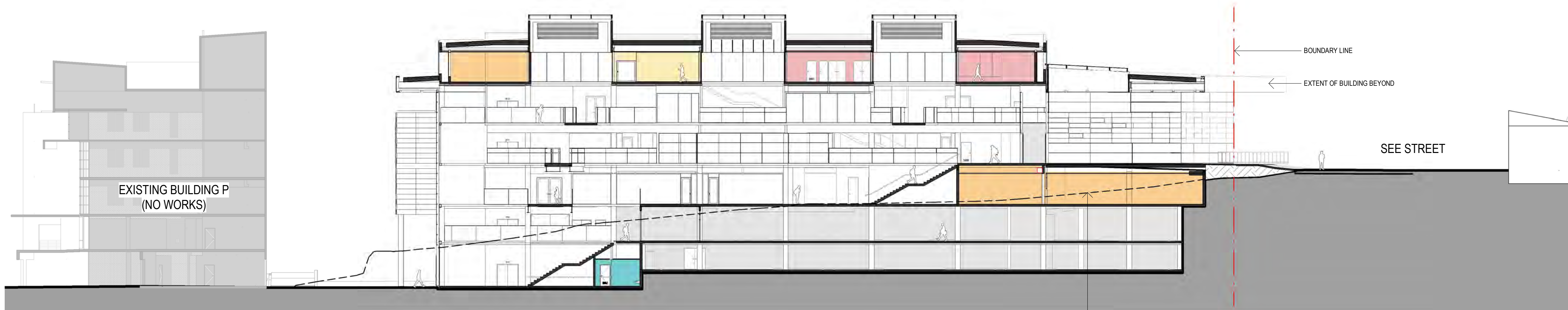
DWG #	DA21	REV	B
SCALE @ A1	As indicated		



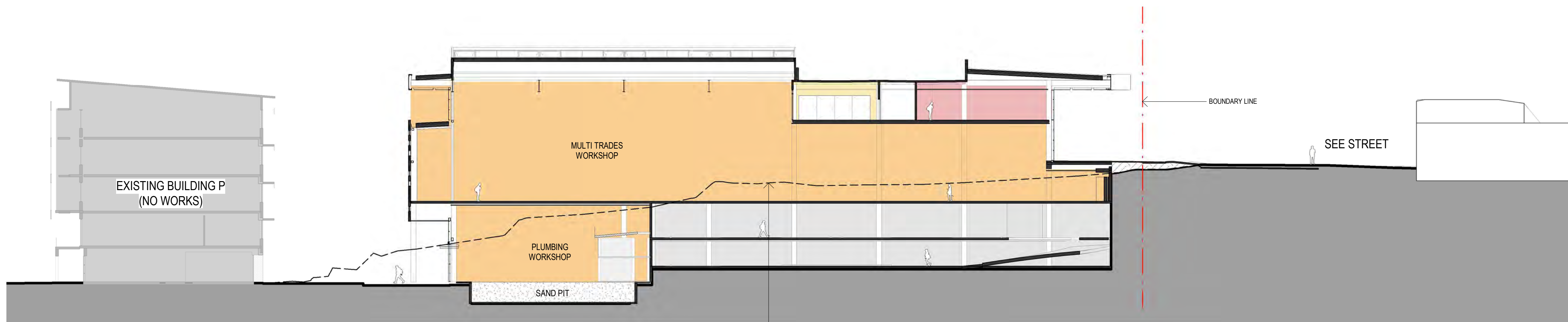
C:\Users\booter\Documents\219067_TAFE NSW Meadowbank_Multi Trades Hub_CENTRAL_R19_SSDA_booter.rvt 9/10/2019 9:43:44 AM



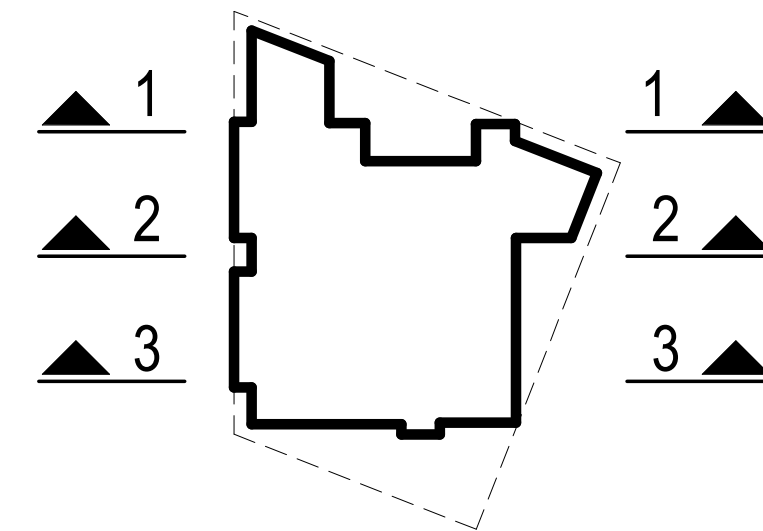
1 EAST - WEST SECTION
190806.4 SCALE 1:250



2 EAST - WEST SECTION
190806.4 SCALE 1:250



3 EAST - WEST SECTION
190806.4 SCALE 1:250



LEVEL 6	33.470
LEVEL 5	29.470
LEVEL 4	25.470
LEVEL 3	21.470
LEVEL 2	17.870
LEVEL 1	13.470
CARPARK LOWER	15.070

T.O. SKYLIGHT	40.850
---------------	--------

- AMENITIES
- APPLIED RESEARCH
- CARPARK
- CARPARK SERVICES
- CIRCULATION
- INDUSTRY ENGAGEMENT
- LEARNING SPACES
- SERVICES
- STORE
- WORKSHOP
- WORKSPACE

GRAY PUKSAND

DISCLAIMER
This document may not be secure, may be corrupted in transmission or due to software incompatibility and/or may be amended or altered by third parties after leaving Gray Puksand's possession.
Gray Puksand is not responsible for and accepts no liability for such matters. Subject only to any conflicting provision within any prior binding agreement, by Gray Puksand (which agreement may also contain additional conditions relating to this document and its use):
1. The content of this document is confidential and copyright in it belongs to Gray Puksand. They are permitted only to be opened, read and used by the addressee.
2. All users of this document must carry out all relevant investigations and must examine, take advice as required and satisfy themselves concerning the contents, correctness and sufficiency of the attachment and its contents for their purposes.
3. To the extent permitted by law, all conditions and warranties concerning this document or any use to which they may be put (whether as to quality, outcome, fitness, care, skill or otherwise) whether express or implied by statute, common law, equity, trade, custom or usage or otherwise are expressly excluded.
4. Any person using or relying on document releases indemnifies, and will keep indemnified, Gray Puksand against all claims, liabilities, loss, costs and expenses arising directly or indirectly out of or in connection with such use or reliance including without limitation any misrepresentation, error or defect in this document.
Contractors to use Architectural drawings for set out.
Contractors to check & verify all Dimensions on Site prior to Construction/Fabrication. Figured Dimensions take precedence over Scaled Dimensions.
Any Discrepancies should be immediately referred to the Architect.
All work to comply with N.C.C. Statutory Authorities & Relevant Australian Standards.
NSW Nominated Architects Scott Moylan 7147 Craig Saltmarsh 6569



REV	DESCRIPTION	DATE
A	Issue for SSDA	04.10.19
B	Issue for SSDA	09.10.19

PROJECT NO	219067
DRAWN	RD
CHECKED	RD
APPROVED	BH

TAFE NSW - Meadowbank
Multi-Trades and Digital
Technology Hub

SSDA ISSUE

SECTIONS - EAST-WEST

DWG #	DA25	REV	B
SCALE @ A1	As indicated		

Scale 1:250
5m



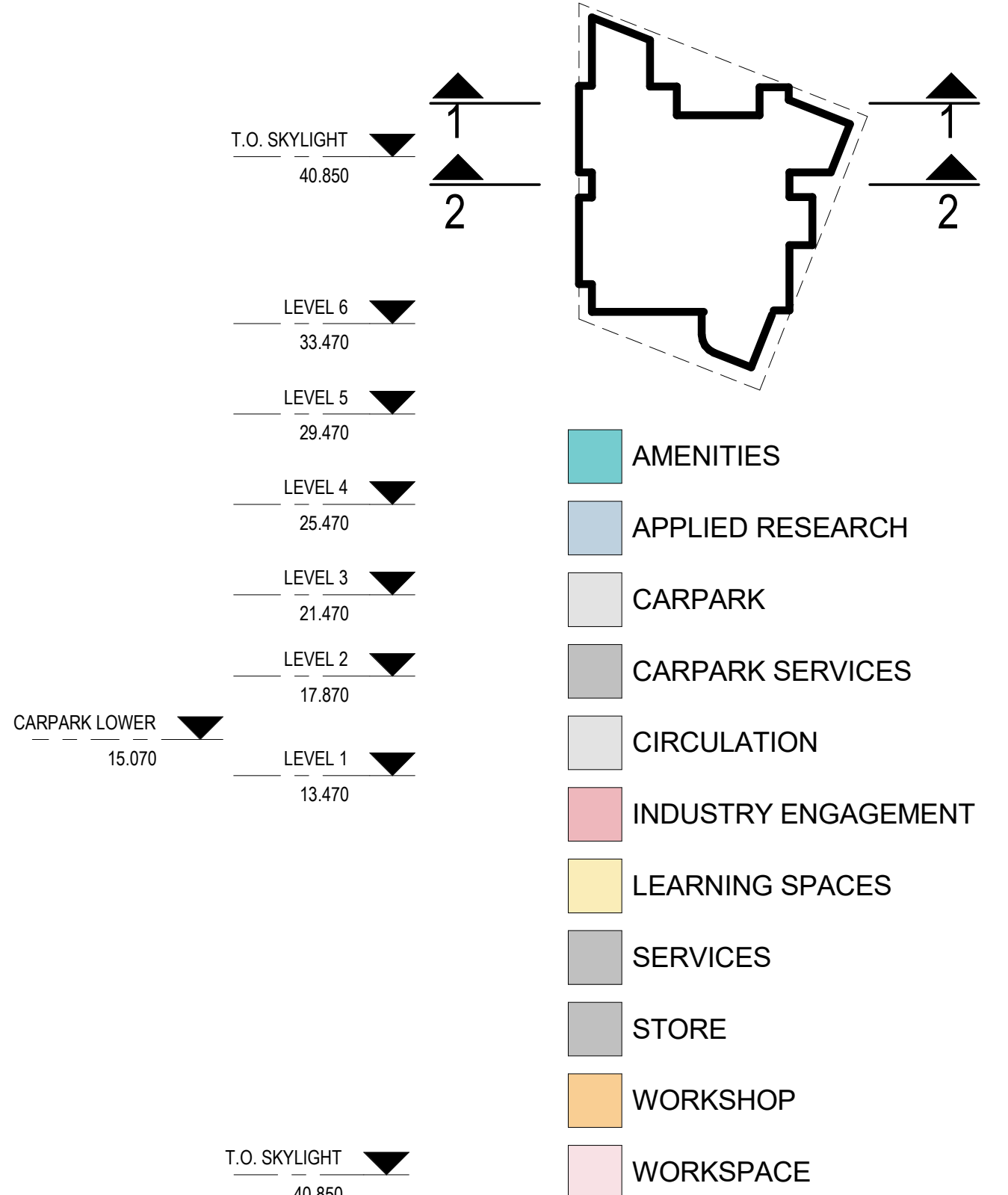
1 SOUTH - NORTH SECTION
190806.4 SCALE 1:250



2 SOUTH - NORTH SECTION
190806.4 SCALE 1:250



3 SOUTH - NORTH SECTION
190806.4 SCALE 1:250



GRAY PUKSAND

DISCLAIMER
This document may not be secure, may be corrupted in transmission or due to software incompatibility and/or may be amended or altered by third parties after leaving Gray Puksand's possession.
Gray Puksand is not responsible for and accepts no liability for such matters. Subject only to any conflicting provision within any prior binding agreement, by Gray Puksand (which agreement may also contain additional conditions relating to this document and its use):
1. The content of this document is confidential and copyright in it belongs to Gray Puksand. They are permitted only to be opened, read and used by the addressee.
2. All users of this document must carry out all relevant investigations and must examine, take advice as required and satisfy themselves concerning the contents, correctness and sufficiency of the attachment and its contents for their purposes.
3. To the extent permitted by law, all conditions and warranties concerning this document or any use to which they may be put (whether as to quality, outcome, fitness, care, skill or otherwise) whether express or implied by statute, common law, equity, trade, custom or usage or otherwise are expressly excluded.
4. Any person using or relying on document releases indemnifies, and will keep indemnified, Gray Puksand against all claims, liabilities, loss, costs and expenses arising directly or indirectly out of or in connection with such use or reliance including without limitation any misrepresentation, error or defect in this document.
Contractors to use Architectural drawings for set out.
Contractors to check & verify all Dimensions on Site prior to Construction/Fabrication. Figured Dimensions take precedence over Scaled Dimensions.
Any Discrepancies should be immediately referred to the Architect.
All work to comply with N.C.C. Statutory Authorities & Relevant Australian Standards.
NSW Nominated Architects Scott Moylan 7147 Craig Saltmarsh 6569



REV	DESCRIPTION	DATE
A	Issue for SSDA	04.10.19
B	Issue for SSDA	09.10.19

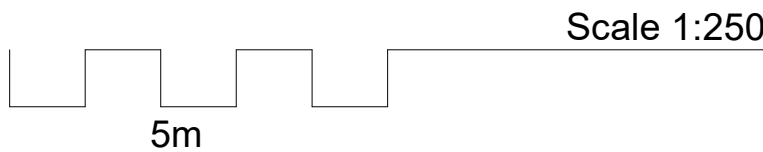
PROJECT NO	219067
DRAWN	RD
CHECKED	RD
APPROVED	BH

TAFE NSW - Meadowbank Multi-Trades and Digital Technology Hub

SSDA ISSUE

SECTIONS - SOUTH-NORTH

DWG #	DA26	REV	B
SCALE @ A1	As indicated		





GRAY PUKSAND

DISCLAIMER

This document may not be secure, may be corrupted in transmission or due to software incompatibility and/or may be amended or altered by third parties after leaving Gray Puksand's possession

Gray Puksand is not responsible for and accepts no liability for such matters. Subject only to any conflicting provision within any prior binding agreement by Gray Puksand (which agreement may also contain additional conditions relating to this document and its use):

1. The content of this document is confidential and copyright in it belongs to Gray Puskas. They are permitted only to be opened, read and used by the addressee.
2. All users of this document must carry out all relevant investigations and must examine, take advice as required and satisfy themselves concerning the contents, correctness and sufficiency of the attachment and its contents for their purposes.
3. To the extent permitted by law, all conditions and warranties concerning this document or any use to which they may be put (whether as to quality, outcome, fitness, care, skill or otherwise) whether express or implied by statute, common law, equity, trade, custom or usage or otherwise are expressly excluded.
4. Any person using or relying on document releases indemnifies, and will keep indemnified, Gray Puskas and its agents, employees, officers and representatives arising directly or indirectly out of or in connection with such use or reliance including without limitation any misrepresentation, error or defect in this document.

Contractors to use Architectural drawings for set out.
Contractors to check & verify all Dimensions on Site prior to Construction/Fabrication.
Figured Dimensions take precedence over Scaled Dimensions.
Any Discrepancies should be immediately referred to the Architect.
All work to comply with N.C.C. Statutory Authorities & Relevant Australian Standards.

NSW Nominated Architects Scott Moylan 7147 Craig Saltmarsh 6569



REV	DESCRIPTION	DATE
A	Issue for SSDA	04.10.19
B	Issue for SSDA	09.10.19

PROJECT NO **219067**
DRAWN **RD**
CHECKED **RD**
APPROVED **BH**

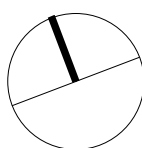
TAFE NSW - Meadowbank
Multi-Trades and Digital
Technology Hub

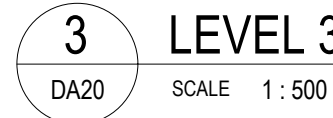
SSDA ISSUE

WINTER SHADOW DIAGRAM IMPACT STUDY SHADOWS

DWG # **DA37** REV **B**

SCALE @ A1 1 : 1000



GFA DEFINITION - EXTRACTED FROM RYDE LEP 2014

GROSS FLOOR AREA MEANS THE SUM OF THE FLOOR AREA OF EACH FLOOR OF A BUILDING MEASURED FROM THE INTERNAL FACE OF EXTERNAL WALLS, OR FROM THE INTERNAL FACE OF WALLS SEPARATING THE BUILDING FROM ANY OTHER BUILDING, MEASURED AT A HEIGHT OF 1.4 METRES ABOVE THE FLOOR, AND INCLUDES:

- (a) THE AREA OF A MEZZANINE, AND
(b) HABITABLE ROOMS IN A BASEMENT OR AN ATTIC, AND
(c) ANY SHOP, AUDITORIUM, CINEMA, AND THE LIKE, IN A
BASEMENT OR ATTIC,

BUT EXCLUDES:

- (d) ANY AREA FOR COMMON VERTICAL CIRCULATION, SUCH AS LIFTS AND STAIRS, AND

- (e) ANY BASEMENT:
(i) STORAGE, AND
(ii) VEHICULAR ACCESS, LOADING AREAS, GARBAGE AND SERVICES, AND

- (f) PLANT ROOMS, LIFT TOWERS AND OTHER AREAS USED EXCLUSIVELY FOR MECHANICAL SERVICES OR DUCTING, AND

- (g) CAR PARKING TO MEET ANY REQUIREMENTS OF THE
CONSENT AUTHORITY
(INCLUDING ACCESS TO THAT CAR PARKING), AND

- (h) ANY SPACE USED FOR THE LOADING OR UNLOADING OF
GOODS (INCLUDING
ACCESS TO IT), AND

- (i) TERRACES AND BALCONIES WITH OUTER WALLS LESS THAN 1.4 METRES HIGH, AND
- (ii) VOIDS ABOVE A FLOOR AT THE LEVEL OF A STOREY OR STOREY ABOVE.

DISCLAIMER

This document may not be secure, may be corrupted in transmission or due to software incompatibility and/or may be amended or altered by third parties after leaving Gray Puksand's possession

Gray Puksand is not responsible for and accepts no liability for such matters. Subject only to any conflicting provision within any prior binding agreement by Gray Puksand (which agreement may also contain additional conditions relating to this document and its use):

1. The content of this document is confidential and copyright in it belongs to Gra Puksand. They are permitted only to be opened, read and used by the addressee.

2. All users of this document must carry out all relevant investigations and must examine, take advice as required and satisfy themselves concerning the content correctness and sufficiency of the attachment and its contents for their purposes

3. To the extent permitted by law, all conditions and warranties concerning this document or any use to which they may be put (whether as to quality, outcome, fitness, care, skill or otherwise) whether express or implied by statute, common law, equity, trade, custom or usage or otherwise are expressly excluded.

4. Any person using or relaying document releases indemnifies, and will keep indemnified, Gray Puksand against all claims, liabilities, loss, costs and expenses arising directly or indirectly out of or in connection with such use or reliance including without limitation any misrepresentation, error or defect in this document.

Contractors to use Architectural drawings for set out.
Contractors to check & verify all Dimensions on Site prior to Construction/Fabrication.
Figured Dimensions take precedence over Scaled Dimensions.
Any Discrepancies should be immediately referred to the Architect.
All work to comply with N.C.C. Statutory Authorities & Relevant Australian Standards.

NSW Nominated Architects Scott Moylan 7147 Craig Saltmarsh 6569



PROJECT NO	219067
DRAWN	HA
CHECKED	RD
APPROVED	BH

TAFE NSW - Meadowbank
Multi-Trades and Digital
Technology Hub

SSDA ISSUE

GFA PLANS

DWG #	DA50	REV	B
SCALE @ A1	As indicated		