

Stadium
Australia
Redevelopment



Consultation Outcomes Report

September 2019

KJA



an ERM Group company

Contents

01: Executive Summary	5
02: Introduction	6
03: Document Purpose	7
04: Background	8
05: Site Description	9
06: Overview of Proposed Development	11
07: Communication and Engagement Overview and Objectives	12
08: Stakeholder Consultation	13
09: Communication and Engagement Activities and Tools	16
10. Feedback	19
11: Issues Raised and Responses	22
12: Conclusions and Next Steps	26
13: Appendices	27

Glossary

Acronym	Name
ARLC	Australian Rugby League Commission
BDAR	Biodiversity Development Assessment Report
CPTMP	Construction Pedestrian and Traffic Management Plan
DPIE	Department of Planning, Industry and Environment
EIS	Environmental Impact Statement
ESD	Ecologically Sustainable Development
FFA	Football Federation of Australia
INSW	Infrastructure NSW
LED	Light-Emitting Diode
NRL	National Rugby League
NSWRL	NSW Rugby League
OOS	NSW Office of Sport
RA	Rugby Australia
SEARs	Secretary's Environmental Assessment Requirements
SOHI	Statement of Heritage Impact
SOP	Sydney Olympic Park
SOPBA	Sydney Olympic Park Business Association
SOPA	Sydney Olympic Park Authority
SSDA	State Significant Development Development Application
TfNSW	Transport for NSW
TTIA	Transport and Traffic Impact Assessment

01: Executive Summary

KJA was engaged by Infrastructure NSW (INSW), as part of a broader consultancy team, to undertake a program of community and stakeholder engagement to support lodgement of a State Significant Development Application (SSDA) for the redevelopment of Stadium Australia.

This report outlines the outcomes of stakeholder and community engagement activities undertaken to address the Secretary's Environmental Assessment Requirements (SEARs) issued by the Department of Planning Industry Environment (DPIE) to support lodgement of the SSDA. It also includes a list of a preliminary round of engagement with relevant sporting codes undertaken by INSW, Venues NSW and NSW Office of Sport (OOS), along with additional communication and engagement activities with stadium hirers and members, undertaken by Venues NSW, Venues Live, OOS and INSW.

To address the consultation requirements of the SEARs, and create broad awareness about plans for the redevelopment of the stadium and ensure stakeholders and the community had an opportunity to provide input and feedback on areas of interest or issues of concern, key tools and activities included:

- direct consultation by technical consultants with agencies identified in the SEARs
- communication with Stadium neighbours and key groups within the Sydney Olympic Park precinct
- project flyer – letterbox dropped to more than 10,000 residents
- public notifications in local print media
- two community drop-in events
- 1800 community information line and email address
- project website.

To date, a large majority of feedback have been supportive of the proposal. Key areas of interest and issues have focused on:

- the overall benefits, particularly for stadium members
- access and availability of public transport
- the ability of Stadium Australia to attract and retain high-profile sporting matches
- potential for fully-enclosed, retractable roof
- the cost of the project
- timing of delivery
- impact on local business.

Communication and engagement with key stakeholder groups are ongoing and INSW will continue to liaise with relevant parties. This includes sporting codes, stadium hirers and major neighbouring stakeholder within the Sydney Olympic Park Precinct.

02: Introduction

This report has been prepared by KJA to support an SSDA for the refurbishment of Stadium Australia, which is submitted to the Minister for Planning under Part 4 of the Environmental Planning and Assessment Act 1979 (EP&A Act). INSW is the proponent of the SSDA.

In particular, this report outlines the program of communication and community engagement activities undertaken by KJA and technical consultants to address the SEARs issued by the DPIE. It includes details of the tools and activities used to engage a broad range of stakeholders throughout July and August 2019, along with a summary of the key issues raised and how they have been considered or addressed.

INSW recognises the interest from the community and other stakeholders about plans for Stadium Australia and the need for effective and genuine consultation and engagement. Activities documented in this report include:

- a preliminary round of engagement with relevant sporting codes undertaken by INSW, Venues NSW and OOS;
- consultation by technical consultants with the relevant agencies and stakeholders identified in the SEARs, during the preparation of the Environmental Impact Statement (EIS);
- communication and engagement with the local community and event-goers; and
- further communication and engagement with stadium hirers and members, undertaken by Venues Live, OOS and INSW.

03: Document Purpose

DPIE has issued SEARs to the applicant for the preparation of an EIS for the proposed development. This report has been prepared having regard to the relevant SEARs and also presents the complimentary consultation undertaken to inform the wider community and provide an opportunity for feedback through consultation.

SEARs requirements

The consultation requirements of the SEARs and where they have been addressed in this report are outlined below:

SEARs	Comment / reference
<p>During the preparation of the EIS, you must consult with the relevant local, State or Commonwealth Government authorities, service providers, community groups and affected landowners.</p> <p>In particular, you must consult with:</p> <ul style="list-style-type: none">• City of Parramatta Council• Sydney Olympic Park Authority (SOPA)• Transport for NSW (Roads and Maritime Services)• Transport for NSW (TfNSW)• Sydney Coordination Office within TfNSW• Environment, Energy and Science Group of the Department of Planning, Industry and Environment (former NSW Office of Environment and Heritage)• NSW Environment Protection Authority• Heritage Division of the Department of Premier and Cabinet (former Heritage Division of the Office of Environment and Heritage)• NSW Police• Sydney Water• surrounding residents, businesses and local community groups.	<p>Please refer to the following sections of this report for more information:</p> <ul style="list-style-type: none">• Section '08: Stakeholder Consultation' for the stakeholders consulted• Section '09: Communication and Engagement Activities and Tools' for information about how contact was made• Section '10: Feedback' for the feedback these stakeholders have provided.
<p>The EIS must describe the consultation process and the issues raised and identify where the design of the development has been amended in response to these issues. Where amendments have not been made to address an issue, a short explanation should be provided.</p>	<p>Please refer to section '11: Issues Raised and Responses' for this information.</p>

04: Background

Stadium Australia opened in 1999 for the 2000 Sydney Olympic and Paralympic Games and, at the time, was the largest Olympic Stadium ever built and the second-largest stadium in Australia. In March 2018 the NSW Premier announced plans to refurbish Stadium Australia to address deficiencies with the existing infrastructure and ensure the stadium retains its status as a premier venue within a network of stadia and events infrastructure in NSW.

The NSW Stadia Strategy 2012 provides a vision for the future of stadia within NSW, prioritising investment to achieve the optimal mix of venues to meet community needs and to ensure a vibrant sports and event environment in NSW. A key action of the strategy includes developing Tier 1 stadia and their precincts covering transport, integrated ticketing, spectator experience, facilities for players, media, corporate and restaurant users and entertainment provision. Stadium Australia is one of three Tier 1 stadia within NSW, the others being Sydney Football Stadium and Sydney Cricket Ground.

To qualify for Tier 1 status, a stadium is required to:

- have a seating capacity greater than 40,000
- regularly host international sporting events
- offer extensive corporate facilities, including suites, open-air corporate boxes and other function/dining facilities; and
- be the home ground for sporting teams playing in national competitions.

The refurbishment of Stadium Australia will address deficiencies in the existing infrastructure and improve facilities to be in line with contemporary Australian venue standards. The works ensure the stadium remains a modern, globally competitive venue that achieves the requirements for a Tier 1 stadium. The refurbishment of Stadium Australia addresses the following project objectives:

- transform the stadium into a 'fan favourite' destination for experiencing and enjoying sports and entertainment events
- maximise the direct and indirect economic, social and cultural benefits to NSW from the project, including securing major, economically beneficial events within NSW to ensure the economic sustainability of the stadium into the future
- deliver a multi-use contemporary rectangular venue that meets the needs of patrons, hirers and other users for rugby, football, concerts and other new forms of entertainment, and reaffirms the status of the stadium as Australia's largest purpose-built rectangular venue
- improve the facility's sensitivity to the environmental conditions of the site by providing a roof which provides cover to 100% of seats (to the drip line)
- provide new and refurbished corporate areas, members' areas and general admission areas to enhance the patron experience
- promote universal accessibility, safety and security such that the stadium is welcoming, inclusive and safe for all stadium users, including persons requiring universal access
- promote environmental sustainability and embrace a whole of life approach to operations and maintenance; and
- achieve a high standard of design and reinforce the stadium's status and identity within the NSW stadia network, and more broadly, nationally and internationally.

05: Site Description

The site is located at 15 Edwin Flack Avenue within the Sydney Olympic Park. It is bound by Edwin Flack Avenue to the west, Dawn Fraser Avenue to the south, Olympic Boulevard to the east and Qudos Bank Arena to the north. The site is located within the City of Parramatta Local Government Area.

The site is legally described as Lot 4000 in DP 1004512 and part of Lot 4001 in DP 1004512. In 2017, the Minister for Sport assigned Venues NSW as the trustee of Stadium Australia under the Sporting Venues Authorities Act 2008.

In a broader context, the site forms part of Sydney Olympic Park, which is a sporting and economic centre in metropolitan Sydney that covers 680 hectares. Sydney Olympic Park comprises a range of sports and entertainment venues, parklands, and commercial, retail and residential developments. It benefits from convenient access to Homebush Bay Drive, Parramatta Road and the M4 Western Motorway, as well as Olympic Park railway station. The Parramatta Light Rail Stage 2 and Sydney Metro West will also significantly increase accessibility.

The locational context of the site is shown in **Figure 1**, whilst site boundaries and site features are shown in **Figure 2**.

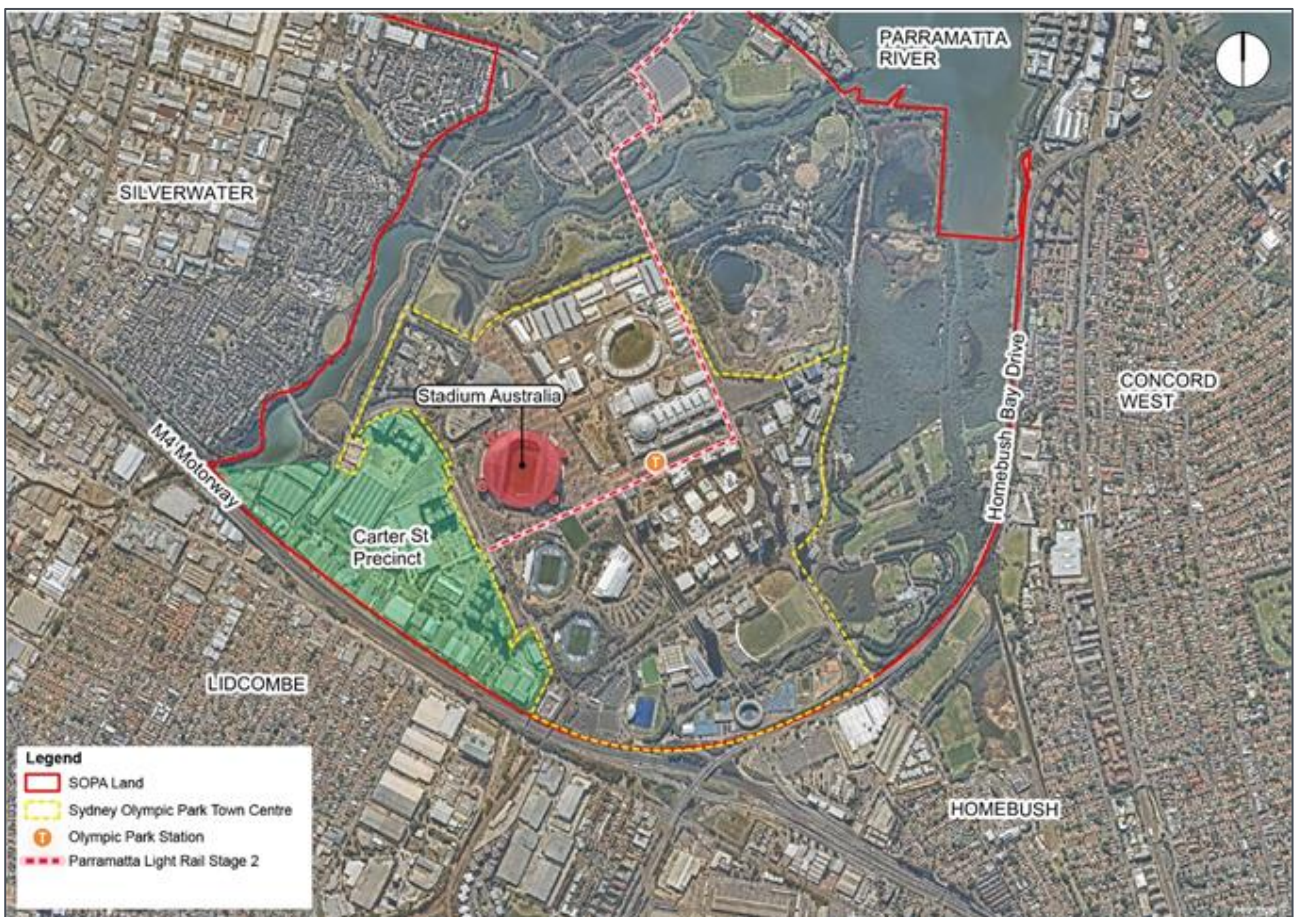


Figure 1 - Locational context of the site



Figure 2 - Site area and local context

06: Overview of Proposed Development

In March 2018 the NSW Government announced its commitment to refurbish the existing Stadium Australia and retain its status as a premier venue within a network of stadia and events infrastructure in NSW. This comprises:

- reconfiguring the field of play to a permanent rectangle shape
- redeveloping the lower and middle seating bowl to locate seating closer to the field and increase the pitch (steepness) of the seating bowl, which has the effect of reducing the capacity to approximately 70,000 seats (plus up to an additional 20,000 persons on the field during concerts)
- providing 100% drip-line roof coverage to all permanent seats by replacing the northern and southern sections of the roof and extending the existing eastern and western sections of the roof
- providing a new northern and southern public stadium entrance, including a new stadium facade and double-height concourse
- renewing the food and beverage concessions, bathrooms, team facilities including new gender-neutral change rooms, members and corporate facilities, press and broadcast facilities, and back of house areas
- providing new signage, high-definition video replay screens, LED lighting, and other functional improvements
- retaining the public domain areas surrounding the stadium that deliver a range of publicly accessible, event and operational areas, with minor works for tree removal.

Part of the existing stadium forecourt will be used as a construction compound during the construction phase and reinstated following the completion of works before the commencement of stadium operations.



Figure 3 - Indicative photomontage of the proposed stadium

07: Communication and Engagement Overview and Objectives

Overview

INSW acknowledge DPIE's emphasis on effective and genuine community consultation, including a comprehensive and transparent process during the preparation of the EIS, to ensure the community is provided with an understanding of the proposal. This includes a description of any potential impacts and ensuring stakeholders are actively engaged in issues of concern to them.

To meet the requirements of the SEARs and to ensure a consistent approach across various stakeholder groups, the methodology for community and stakeholder engagement was coordinated across three key areas:

- engagement with relevant agencies, authorities and service providers to address the technical requirements of the SEARs
- dedicated engagement with the community and stakeholders, particularly those with a direct interest in the proposal, such as residents, neighbours and other stakeholders; and
- communication and engagement through existing relationships with stakeholders including tourism and stadium user groups.

Objectives

Fundamental to KJA's approach was a focus on ensuring the community and stakeholders were provided with an understanding of what's proposed, were actively engaged in issues of concern to them and had the opportunity to provide feedback.

The objectives of community and stakeholder engagement were to:

- inform the local community and other stakeholders about INSW's plans in a timely, accurate, and accessible manner
- demonstrate INSW's commitment to community and stakeholder engagement
- proactively engage stakeholders and community members most likely to have an interest in the plans to assist the project team to understand their main areas of interest
- explain the planning process and provide opportunities for stakeholders and the community to provide comment and feedback
- identify issues to be considered or addressed in the preparation of the EIS
- to coordinate with the other areas of Government, including Venues NSW and OOS to ensure key sporting bodies and user groups have access to a clear understanding of plans for the stadium and were allowed to provide feedback during the preparation of the EIS and SSDA.

08: Stakeholder Consultation

A dedicated program of communication and engagement was undertaken during the preparation of the EIS, together with additional communication and engagement through existing channels via Venues NSW, Venues Live and the OOS.

Preliminary engagement with relevant sporting codes undertaken by INSW, Venues NSW and OOS.

A preliminary round of engagement with relevant sporting codes and major venue hirers was undertaken by INSW, Venues NSW and OOS, between 2 and 22 July. This included separate and dedicated briefings with:

- National Rugby League (NRL)
- Rugby Australia (RA)
- Football Federation of Australia (FFA)
- Stadium Australia Club
- Concert Promoters.

Consultation by technical consultants with the relevant agencies and stakeholders identified in the SEARs, during the preparation of the EIS and SSDA

Stakeholder	Method of engagement
City of Parramatta Council	Meeting held 29 July 2019 at the City of Parramatta's offices.
SOPA	Various meetings held on 25 June, 16 July and 6 and 27 August 2019
TfNSW (Roads and Maritime Services)	Meeting held 16 August 2019.
TfNSW	Meeting held 16 August 2019.
Sydney Coordination Office within Transport for NSW (TfNSW)	Meeting held 16 August 2019.
Environment, Energy and Science Group of the Department of Planning, Industry and Environment (former NSW Office of Environment and Heritage)	Phone conversation 22 August 2019.
NSW Environment Protection Authority	Correspondence sent, providing an update about redevelopment and offering a meeting.
Heritage Division of the Department of Premier and Cabinet (former Heritage Division of the Office of Environment and Heritage)	Phone conversation 22 August 2019.
NSW Police	Email correspondence
Sydney Water	Email correspondence

In addition to key groups identified in the SEARs, INSW has also consulted the following:

Stakeholder	Method of engagement
Accor Group (Pullman Hotel, Novotel Hotel, Ibis Budget Hotel)	Correspondence sent, providing an update about redevelopment and offering a meeting.

Ascott Ltd (Quest Apartments)	Correspondence sent, providing an update about redevelopment and offering a meeting.
Australia YMCI	Correspondence sent, providing an update about redevelopment and offering a meeting.
Destination NSW	Correspondence sent, providing an update about redevelopment and offering a meeting.
Greater Sydney Commission	Correspondence sent, providing an update about redevelopment and offering a meeting.
JQZ	Correspondence sent, providing an update about redevelopment and offering a meeting.
Meriton Group	Correspondence sent, providing an update about redevelopment and offering a meeting.
Key Stadium neighbours, including: Qudos Bank Arena, TEG, AEG Ogden, Royal Agricultural Society of NSW (RAS), NSWRL	Meeting held 29 August 2019
Sydney Olympic Park Business Association	Meeting held 30 August 2019
Ascott Ltd (Quest Apartments)	Correspondence sent, providing an update about redevelopment and offering a meeting.

Communication and engagement with surrounding residents, businesses, local community groups, and event-goers

- As set out in more detail below in section '09: Communication and Engagement Activities and Tools', the local community and patrons were provided with different opportunities to learn more about the redevelopment through the following: a letterbox drop with a project newsletter to approximately 10,000 homes and businesses closest to Stadium Australia
- an update to INSW's existing project website (insw.com/stadiumaus), with information about the redevelopment and community information events, as well as copies of the project newsletter and display boards used at the second community information event
- a dedicated community information email (stadiumausinfo@infrastructure.nsw.gov.au) and telephone number (1800 962 221) to facilitate conversations with anybody who wished to discuss the redevelopment in more detail
- public notices in the Inner West Courier and Auburn Review newspapers, promoting the community information events
- community information events on 17 and 20 August, with the former taking place immediately before a Bulldogs vs Rabbitohs game, specifically to target patrons.

Communication and engagement with stadium hirers and members, undertaken by Venues Live, OOS and INSW

- Consultation with relevant sporting codes and clubs took place in July, led by INSW in collaboration with OOS and Venues NSW, with ongoing meetings with the NRL
- consultation will be ongoing throughout the project development
- concerts and entertainment promoters were consulted in July by Venues NSW in collaboration with INSW
- Gold and Platinum stadium members were consulted in July by Venues NSW in collaboration with Venues Live and INSW.

Complementary Venues NSW communication:

Communication about plans for Stadium Australia has been distributed to by Venues NSW to the following stakeholders:

- Ticketek
- Western Sydney Leadership Dialogue
- Western Sydney Business Chamber
- AEG Ogden.

Complementary Venues Live communication

Communication about plans for Stadium Australia has been distributed to by Venues Live to the following stakeholders:

- Corporate Suite holders
- ANZ Members.

SOPA communication

Communication about plans for Stadium Australia has been distributed by SOPA through the following channels:

- Community notice newsletter (this reached 7,000 contacts)
- Facebook (posts were made on five local Facebook groups, with a combined total of over 2,500 followers).

09: Communication and Engagement Activities and Tools

To ensure a high level of awareness of the redevelopment plans a dedicated program of communication and engagement was undertaken during the preparation of the EIS, together with additional communication and engagement through existing channels via Venues NSW, Venues Live and the OOS.

The following range of tools and activities were used to complement briefings with those organisations who wished to meet.

Correspondence with key stakeholders

To engage with key stakeholder's correspondence was issued by INSW and Venues NSW, which included an overview of the development plans and an offer of to provide a dedicated briefing (a copy of correspondence by INSW is provided at Attachment F).

Project presentation

To support discussions with and briefings with key stakeholders a PowerPoint presentation was prepared, with an overview of the proposal including plans, images and other key information. A copy is provided in Attachment J.

Project newsletter

A project newsletter with an overview of the proposal and an invitation to attend community drop-in events (on Saturday 17 August and Tuesday 20 August 2019) was distributed via letterbox drop to approximately 10,000 residents in Sydney Olympic Park, Newington, Wentworth Point and Carter Street Precinct. (A copy of the project newsletter is provided at Attachment D, with a map of the distribution area provided at Attachment E).

Copies of the newsletter were available at both of the community information events.

Project website

INSW's existing project website (insw.com/stadiumaus) was updated with information about plans for the redevelopment along with information about the two community drop-in events. Information included the following:

- **About:** this includes a broad overview of the redevelopment, the planning process and community consultation, as well the email, telephone and postal contact information, for those who wish to get in contact to find out more
- **Latest updates:** this section will be updated on an ongoing basis
- **Gallery:** the latest artist impressions and other relevant images are displayed here
- **Library:** this will be updated with relevant project materials moving forward and currently includes the project newsletter and the display boards used at the community information events.

Project email address and telephone information line

The email address (stadiumausinfo@infrastructure.nsw.gov.au) and telephone information line (1800 962 221) were set up to help people who want to learn more to get in contact in a way that best suits their needs.

Notifications in local print media

A public notification advertisement about the two community information sessions was placed in both the Inner West Courier and Auburn Review newspapers and appeared on Tuesday 14 August. It provided an overview of the redevelopment plans, information about the community information sessions and contact details for those who wanted to get in touch with specific enquiries. (A copy of the advert is provided at Attachment I).

Project boards

Nine A0 size boards, with an overview of the proposal, the planning process, and a selection of images, and section plans were displayed to provide people with a good opportunity to learn more about the plans and visualise the proposed changes. Key information included:

- **Stadium Australia Redevelopment** – introducing the redevelopment, setting out the purpose of the community information sessions and asking for feedback
- **About the Stadium Australia Redevelopment** – an overview of the context in which the redevelopment plans are being brought forward and their aims
- **The Opportunity and the Vision** – presenting the key elements of Stadium Australia following redevelopment
- **What does the redevelopment involve?** – an explanation of the main elements of the redevelopment
- **Comparing the present and redeveloped stadium** – an image-led board, delineating the areas to be redeveloped and those that will remain as they are
- **Comparing the present and redeveloped stadium** – a second image-led board, focusing specifically on changes to the stands, presented in profile
- **The planning process** – a description of the process, clarifying the current stage
- **Delivering the Stadium Australia redevelopment** – a board focusing on some of the most important matters to be addressed within the EIS
- **Next steps?** – a look ahead, including contact information and requesting feedback.

A copy of the project boards is provided in Attachment C.

Community information events

Two community information events were held as a primary engagement activity to inform residents, businesses and other interested stakeholders about the INSW plans and to enable direct two-way communication with the project team.

Drop in-event One	Drop-in event two
Venue: Stadium Australia (ANZ Stadium) outside light tower 3 Between the main entrance and Sydney Olympic Park Train Station Date: Saturday 17 August 2019 Time: 5-7.30pm	Venue: Sydney Olympic Park Train Station (eastern end) Date: Tuesday 20 August 2019 Time: 4-7pm

The venues and times were selected to attract as much community interest as possible, in prominent locations. The primary aims of the community information events were to:

- Outline the vision for the redevelopment and the key elements
- Gather written and verbal feedback as part of the broader program of consultation
- Identify any additional key areas of community interest or issues that will need to be considered before plans being finalised.

Stadium Australia, 17 August

The first event was in a pop-up format outside Stadium Australia during a Rabbitohs and Bulldogs game, in a prominent location directly between Sydney Olympic Park Train Station and Stadium Australia. It took place between 5pm and 7.30pm on Saturday 17 August to coincide with spectators entering the stadium. Attendees were invited to view the material and speak with members of the project team in an informal environment, to find out about the plans, ask questions and provide feedback. Three A0-size display boards

showing the proposed changes were on hand and copies of the project newsletter were handed out. Each team member had an A3 print-out of all display boards to talk through with people.

Sydney Olympic Park Train Station, 20 August

The second event presented all of the nine display boards and was intended to provide an opportunity for people to view information at the station entrance. This session was aimed at residents and commuters heading home after work, or local workers catching the train after finishing work. It took place between 4pm and 7pm. As with the first, it was staffed throughout by members of INSW's team and copies of the project newsletter were available for people to take away.

10. Feedback

General feedback, issues and suggestions from community and stakeholder engagement have been received through a variety of different channels. These include the early engagement with codes and stadium hirers by INSW, Venues NSW and OSS; comments and questions raised during community information events; and through the project email and/or telephone number.

A summary of feedback to date is outlined below.

Community information events summary

The majority of verbal feedback obtained over the course of the two community information events was positive and this is reflected in the comments received via feedback forms. In total 226 people engaged directly with INSW's team and 21 feedback forms were completed at the sessions. Although the forms requested general feedback – 'Please take a moment to share your thoughts about the redevelopment in this box' – nine respondents wished to record their strong support.

17 August session summary

Staff spoke to approximately 90 people who expressed interest in the plans and 15 feedback forms were completed. Of the people who stopped and engaged in discussion, most appeared supportive of the proposal. While much of the feedback was anecdotal, general comments suggest the support for moving seating closer to the playing field and the larger roof to improve weather protection.

Key issues focused on included:

- access and availability of public transport
- the ability for Stadium Australia to attract and retain high-profile sporting matches
- implementing a fully-enclosed, retractable roof
- the cost of the project
- the overall benefit to patrons in premium seats.

20 August session summary

In total, the project team engaged with 139 people during the drop-in event, with 6 people providing feedback on feedback forms. Key issues focused on were similar to Saturday, although less focused on the impact on members; main themes were:

- timing of delivery
- impact of redevelopment on local business
- support for the redevelopment.

1800 community information telephone number summary

The telephone information line operates on 1800 962 221. As of 30 August it has been used by both key stakeholders, who wish to meet, and members of the public who wish to discuss the plans in more detail. Five calls have been received, including two from members of the public, as of 30 August.

Email summary

Five emails have been received by the email address (stadiumausinfo@infrastructure.nsw.gov.au), as of 30 August.

Web page summary

The INSW Stadium Australia web pages had 607 page views since the newsletter went out on 12 August up to 27 August, which is a 251% increase on the previous 15 day period. This demonstrates the project newsletter and the other steps to raise awareness of the redevelopment and consultation were effective.

Briefings

As of 30 August, briefings have taken place with the following five organisations:

- **City of Parramatta:** a meeting was held on 20 July 2019 at the City of Parramatta's offices. The INSW team gave a presentation that provided an overview of the proposed redevelopment. Specific points of interest raised were: spectator circulation within the stadium, the design excellence process, acoustic report preparation, noting the covenant that has been placed on Carter Street residences recognising the adjacency to an events precinct.
- **SOPA:** various discussions have taken place about the content of the EIS and consultation. The former took place on 25 June, 16 July and 6 August 2019. This covered: the site boundary, haulage routes, scope of works, interaction and timing with any proposed SOPA works in the precinct surrounding the stadium, tree loss and replacement, working in coordination around major events and ecologically sustainable development (ESD) initiatives.
- **TfNSW:** a meeting took place on 16 August 2019 and INSW representatives provided an overview of the Transport and Traffic Impact Assessment (TTIA), including the draft Construction Pedestrian and Traffic Management Plan (CPTMP). Conflicts resulting from construction and events within the precinct were discussed. It was confirmed the haulage routes were acceptable and that management strategies could be employed for events such as the Easter Show to manage any conflicts.
- **Environment, Energy and Science Group of the Department of Planning, Industry and Environment (former NSW Office of Environment and Heritage):** in a telephone conversation of 22 August 2019 it was confirmed with a representative of the former NSW Office of Environment and Heritage that the Biodiversity Development Assessment Report (BDAR) Waiver would be prepared in the required format.
- **Heritage Division of the Department of Premier and Cabinet (former Heritage Division of the Office of Environment and Heritage):** in a telephone conversation of 22 August 2019 a representative of the Heritage Division confirmed that any areas of particular interest would be highlighted in their SEARs comments to DPIE. They advised the Statement of Heritage Impact (SOHI) should consider visual impacts to surrounding heritage items and the proximity of works to those heritage items. It was confirmed these were covered in the SOHI.
- **NSW Police:** consultation with NSW Police was undertaken as part of the development of the security strategy. Consultation will be ongoing in regards to CCTV, hostile vehicle management and security screening devices. This will be undertaken in conjunction with SOPA on a precinct wide basis.
- **EPA:** emails requesting information and offering a meeting were sent to the EPA. No response was received.
- **Royal Agricultural Society of NSW, NSWRL, Qudos Bank Arena, TEG, AEG Ogden:** a meeting with representatives from the above organisations on 29 August 2019, indicated overall support for the proposal. Key discussion points focused on members' seating and facilities, overall seating arrangements, the need for ongoing liaison with stakeholders with the SOP precinct, construction activity including vehicle movements, food and beverage proposals, security and separate development outside of the stadium (also known as the Red Zone), by SOPA.

- **Sydney Olympic Park Business Association:** Feedback from a meeting with Allison Taylor, Chief Executive Officer, confirms support for redevelopment. Discussion focused possible mitigation opportunities to address loss of patronage within the SOP precinct during construction, and ongoing communication about the project. Separate development outside of the stadium (in the area known as the Red Zone), by SOPA was also raised.

11: Issues Raised and Responses

The information below summarises issues raised during consultation and the project response.

Issue	Relevant topic of feedback	Project Response
The decision to redevelop Stadium Australia	The need, or otherwise, for redevelopment, particularly given Stadium Australia's age.	In September 2015 the NSW Government announced new investment in the state's Major Stadia Network and the redevelopment is part of this.
	Ability of Stadium Australia to attract and retain the highest-profile sporting events.	
	The need, or otherwise, for redevelopment in the context of the wider stadia program.	
	The cost of redevelopment.	The current figure is \$810 million.
Design	Changes to seating capacity.	The current layout of the stadium, particularly at each end, follows an arc to accommodate its current oval style layout. Moving each end closer to the playing field for a rectangular layout, reduces the arc, which reduces seating capacity but places most spectators closer to the field of play.
	Changes to the roofline.	An extended roofline will ensure improved weather protection and an amplified atmosphere delivering a premium experience for all spectators.
	The decision not to proceed with a fully-enclosed roof design and/or removable floor.	An operable roof and removable floor is not included in the project budget. The Stadium Australia Business Case found that the additional costs associated with the inclusion of an operable roof resulted in a lower benefit cost ratio than the option without.
	Question on benefit of improving viewing experience for spectators in north and south stands – when optimal view for rugby codes is side view from east and west stands.	The concept design for the stadium has been developed following a detail business case and provides the greatest cost benefit and viewing experience for spectators.
	Suggestion that western grandstand is redeveloped and moved closer to playing field, with eastern stand	

	remaining to enable the stadium to remain open during construction.	
	Spectator circulation within the redeveloped stadium.	New areas and upgrades, including a concert entry way, food court, public space and areas for spectator circulation are included in the plans.
	The design excellence process.	The EIS includes a Design Excellence Strategy and addresses the relevant provisions, goals and objectives in the Sydney Olympic Park Authority's Design Excellence Policy.
	Changes outside the existing Stadium Australia footprint.	The redevelopment does not include work outside of the stadium footprint.
	Enquiries about the amount of corporate space to be provided in the redeveloped stadium.	New members' and corporate hospitality suites are included in the plans.
	Food and beverage options in the redeveloped stadium.	New and upgraded food and beverage facilities are being proposed in the planned redevelopment.
	Underground access.	New underground access is not proposed.
Traffic, transport and access	Access to and availability of public transport, including direct transport.	This is addressed within the Transport and Traffic Impact Assessment (TTIA) and Construction Pedestrian and Traffic Management Plan (CPTMP submitted with the SSDA).
	Car parking provision.	Additional car parking provision is not proposed.
	The interface with Parramatta Light Rail (Stage 2).	The EIS addresses the relevant provisions, goals and objectives of Sydney's Cycling; Walking; Light Rail and Rail Futures Guidelines within the Transport and Traffic Impact Assessment prepared by JMT.
Impact on existing members	Impacts on existing membership arrangements (including seating arrangements).	Ongoing consultation will be undertaken. ANZ Stadium Member Services will liaise with stadium members. Redevelopment includes new members' and corporate hospitality suites. A breakdown of general, corporate and member seating/boxes will be addressed in detailed design.
	Need for secure phone charging facilities for members.	Please see the response above.

	Preference for a members' entrance and facilities on the eastern side of the stadium.	There will be no change to the existing entrances on the east and west stands.
Construction and operational impacts, and operational matters	Disruption to events caused by construction, including the staging of the Grand Final.	<p>The NSW Government is making arrangements in consultation with stadium operators, codes, clubs and key stakeholders to host sporting events at other venues within the NSW Stadia network.</p> <p>Communication with neighbouring venues to mitigate impacts during construction will be ongoing.</p>
	Confirmation of haulage routes.	Conflicts resulting from construction and events within the precinct have been discussed with TfNSW and SOPA. It was confirmed the haulage routes were acceptable and that management strategies could be employed for events such as the Easter Show to manage any conflicts.
	Interaction and timing with any proposed SOPA works in the (Redzone) precinct surrounding Stadium Australia.	The redevelopment does not include work outside of the stadium footprint (within the Redzone). A CPTMP will be developed to ensure work does not impact on the broader Sydney Olympic Park public domain.
	Interaction and timing with major events.	<p>The EIS addresses the impact of major events in the precinct as they relate to the proposed works within the Town Centre (SOP Major Event Impact Assessment Guidelines).</p> <p>Please see the response to the 'Confirmation of haulage routes' point above.</p>
	Security arrangements during construction and during operation.	As above, consultation with NSW Police was undertaken as part of the development of the security strategy. Consultation will be ongoing in regards to CCTV, hostile vehicle management and security screening devices. This will be undertaken in conjunction with SOPA on a precinct wide basis.
Impact on surrounding residents, businesses and other neighbours	Impact on the Carter Street residential precinct.	<p>INSW will continue to consult with the community and impacted stakeholders, including residents, during the development of the project.</p> <p>The EIS includes a Noise and Vibration Assessment prepared in accordance with the relevant EPA guidelines, to ensure impact on surrounding residents is minimised through construction and also in the operational phase.</p>
	Impact on local retailers and other businesses.	Local residents will be kept informed when plans are finalised and can provide feedback during public

		exhibition of eth EIS. Regular updates and engagement is proposed through each stage of the project.
	Heritage impacts.	The Statement of Heritage Impact (SOHI) considers visual impacts to any surrounding heritage items and the proximity of works to those heritage items.
Sustainability	Tree loss and replacement.	The Biodiversity Development Assessment Report (BDAR) Waiver addresses any impacts on existing trees.
	ESD initiatives, including water-saving technologies and renewable energy.	The EIS details how ESD principles will be incorporated in the design, construction and operation of the development. This includes outlining resource, energy and water efficiency initiatives.
Timing and next steps	Anticipated delivery timeframe.	The project is still in the early stages of planning. A SSDA will be lodged with the Department of Planning, Industry and Environment later this year. Subject to approval of the DA, construction is planned to commence in mid-2020, with completion expected by 2023.
	Ongoing consultation, including with major developers.	<p>A comprehensive program of consultation has occurred with key stakeholders, members and the community as part of the planning process.</p> <p>The EIS will also be placed on public exhibition by DPIE, which will provide an opportunity for community feedback, before it is assessed by DPIE.</p> <p>Further updates and engagement will occur through the project.</p>
	Requests to be kept up-to date with the SSDA DA and related matters.	<p>INSW will continue to keep stakeholders and the wider local community informed.</p> <p>Further updates and engagement will occur through the project.</p> <p>Phone: 1800 962 221</p> <p>Email: stadiumausinfo@infrastructure.nsw.gov.au</p> <p>Mail: PO Box R220, Royal Exchange NSW 1225</p>

12: Conclusions and Next Steps

The consultation and engagement undertaken to support the preparation of the EIS has ensured the community and all stakeholders identified in the SEARs were made aware of and had an understanding of the proposed redevelopment of Stadium Australia. It also ensured they had an opportunity to provide feedback on issues and matters of concern to them.

In addition to stakeholders identified in the SEARs, and in accordance with DPIE's expectations for effective and genuine community consultation, the program of communication and engagement undertaken also provided an opportunity to create broader awareness among a larger range of stakeholders including sporting bodies, stadium hirers and members, and the event going public.

Opportunities for feedback were provided at two community information sessions, via stakeholder briefings and through the 1800 number and community information email address.

INSW will continue to work with relevant parts of Government to ensure major stakeholders are provided with information and can provide feedback throughout the assessment process. This will include mechanisms to provide information and to respond to enquiries received via email, telephone or through existing relationships by INSW, Venues NSW, Venues Live and OSS.

It is anticipated that regular briefings will be coordinated by INSW, Venues NSW and OSS, through 'major neighbours forum' through-out the life of the project.

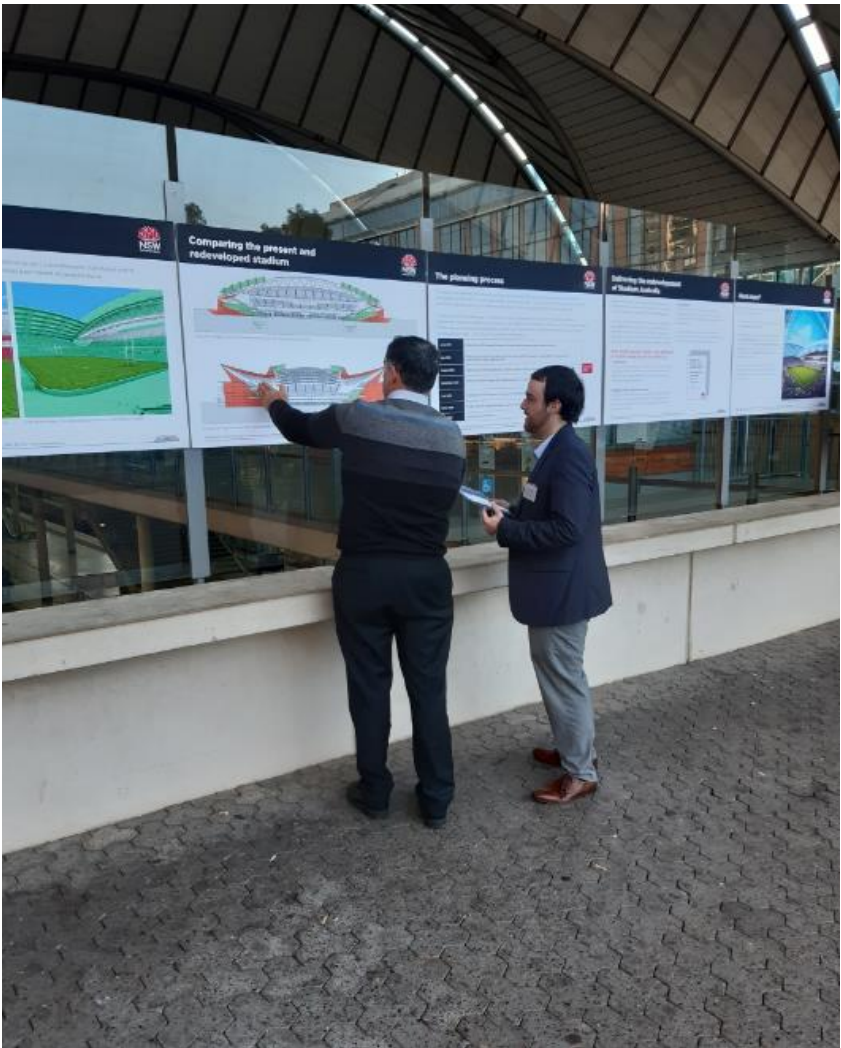
In addition to engagement coordinated by the project team, community members and other stakeholders will have the opportunity to 'have their say' during a future public exhibition period of the EIS and SSDA to be managed by DPIE.

13: Appendices

Attachment A: Photos from the community information sessions of 17 August 2019 at Stadium Australia



Attachment B: Photos from the community information sessions of 20 August 2019 at Sydney Olympic Park Train Station



Attachment C: Display boards used at the community information sessions of 17 and 20 August 2019



Stadium Australia Redevelopment



Welcome to the community information session about the redevelopment of Stadium Australia.

The purpose of this event is to provide you with:

- Information about the State Significant Development Application (SSDA)
- An understanding of the planning process and project timeline
- An opportunity to meet the project team, including technical experts
- A chance to provide feedback and ideas prior to lodgement of the development application and Environmental Impact Statement (EIS).

Have your say

We'd love to hear from you. Our friendly team members are here to speak about any concerns or answer any questions you may have.

Before you leave, please ensure you fill out a feedback form and hand it back to one of our team members.



Indicative image of the redeveloped Stadium Australia

Register your interest and stay up to date: stadiumausinfo@infrastructure.nsw.gov.au / 1800 962 221 / nsw.com/stadiumaus



About the redevelopment of Stadium Australia



In September 2015 the NSW Government announced the biggest investment in the state's Major Stadia Network since the Sydney 2000 Olympics. This will help drive growth in the State's visitor economy and position Sydney as Australia's leading sports and entertainment destination. The investment will deliver significant improvements to the fan experience whilst helping to attract and play host to the best events in the world.

To deliver on this commitment planning has begun to redevelop the iconic Stadium Australia into a modern, world-class sporting venue.

The project involves refurbishing and reconfiguring the current stadium to create a 70,000 seat rectangular sporting venue that brings spectators closer to the action, delivering a far better visitor experience with greatly improved facilities for spectators and participants.



Indicative image of the redeveloped Stadium Australia

Register your interest and stay up to date: stadiumausinfo@infrastructure.nsw.gov.au / 1800 962 221 / insw.com/stadiumaus



The opportunity and the vision



Stadium Australia will be transformed to provide an outstanding 21st century experience for spectators and participants. The stadium will be reconfigured, with major improvements to ensure it meets the highest international standards and positions Sydney as Australia's leading sports and entertainment destination.

When complete Stadium Australia will provide:

- A superior fan experience bringing 46,000 seats closer to the on-field action than ever before
- Elevated seating to offer uninterrupted views of the action
- Extended roof lines to improve weather protection for spectators
- Cutting edge information and communication technology
- Optimised television broadcast capability
- Modernised amenities and back of house facilities including gender neutral change rooms
- New and upgraded food and beverage facilities with greater choice
- New members' and corporate hospitality suites.



Indicative image of the redeveloped Stadium Australia

Register your interest and stay up to date: stadiumausinfo@infrastructure.nsw.gov.au / 1800 962 221 / insw.com/stadiumaus



What does the redevelopment involve?



Redevelopment of the stadium to suit a rectangular playing field will move spectators, corporate suites and members closer to the field of play than ever before.

The redevelopment will include:

- Reconstructing the northern and southern stands, moving the first row of seating 18 meters and the last row of seating 15 meters closer to the field of play
- Reconfiguring the lower and middle sections of the eastern and western stands to move the first row of seating 5 meters and the last row of seating 14 meters closer to the field of play
- Extending the roof line coverage
- Relocating corporate suites from level 3 to level 2
- New areas and upgrades, including a concert entry way, food court, public space and areas for spectator circulation.



Indicative image - the proposed area to be redeveloped is highlighted in pink

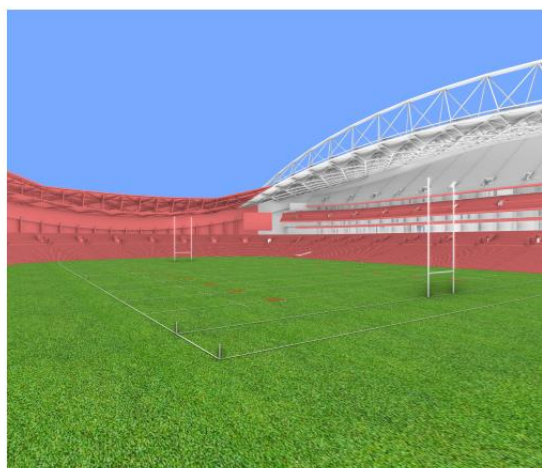
Register your interest and stay up to date: stadiumausinfo@infrastructure.nsw.gov.au / 1800 962 221 / nsw.com/stadiumaus



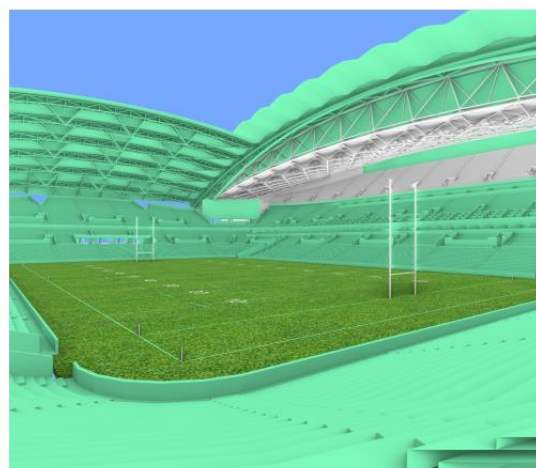
Comparing the present and redeveloped stadium



The current layout of the stadium, particularly at each end, follows an arc to accommodate oval shaped events. Moving each end and the sides closer to the playing field creates a permanent rectangular layout.



Indicative image - the proposed area to be redeveloped is highlighted in pink

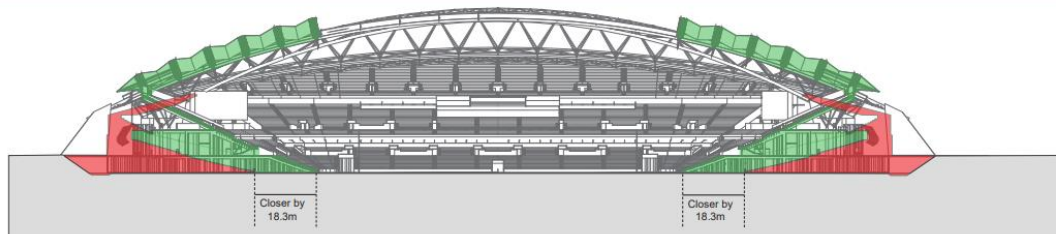


Indicative image - the redeveloped stadium is highlighted in green

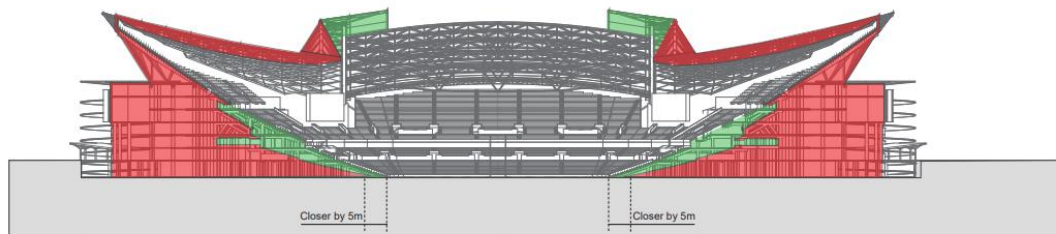
Register your interest and stay up to date: stadiumausinfo@infrastructure.nsw.gov.au / 1800 962 221 / nsw.com/stadiumaus



Comparing the present and redeveloped stadium



Indicative image showing the redevelopment of the north and south stands



Indicative image showing the redevelopment of the east and west stands

Register your interest and stay up to date: stadiumausinfo@infrastructure.nsw.gov.au / 1800 962 221 / nsw.com/stadiumaus



The planning process



The project has been declared a State Significant Development (SSD) under the Environmental Planning and Assessment Act 1979 NSW. It is being delivered by Infrastructure NSW, on behalf of the NSW Government. Before demolition and construction can commence, Infrastructure NSW must obtain relevant planning approvals.

Infrastructure NSW is preparing an Environmental Impact Statement (EIS) as part of the State Significant Development Application (SSDA) to be lodged with the Department of Planning, Industry and Environment (DPI&E). Prior to lodging the development application, we want to get feedback from stakeholders and the local community on the proposed design, construction and operation of the stadium.

June 2019	Infrastructure NSW requests Secretary's Environmental Assessment Requirements (SEARs)
July 2019	Department of Planning, Industry & Environment (DPI&E) prepares & issues SEARs for preparation of Environmental Impact Statement (EIS)
August 2019	Infrastructure NSW prepares EIS to address SEARs. Initial community and stakeholder consultation
September 2019	Infrastructure NSW lodges EIS. DPI&E places EIS on public exhibition
Late 2019	Infrastructure NSW prepares a Response to Submissions report
Early 2020	DPI&E prepares Assessment Report and recommended conditions
Mid-2020	Construction commences

WE ARE
HERE

Register your interest and stay up to date: stadiumausinfo@infrastructure.nsw.gov.au / 1800 962 221 / nsw.com/stadiumaus



Delivering the redevelopment of Stadium Australia



Detailed planning is already underway to ensure the future redevelopment can be carried out safely with the minimum impact, including on neighbours and local stakeholders.

On 17 July 2019 the Secretary's Environmental Assessment Requirements (SEARs) were issued by the Department of Planning, Industry and Environment (DPI&E) to guide the preparation of the Environmental Impact Statement (EIS) to support a State Significant Development Application (SSDA).

Some of the important matters to be addressed in the EIS include (but are not limited to):

• Construction

This includes the preparation of the preliminary construction management plan, construction and operational noise and vibration impact assessment and construction air quality, odour and waste assessment.

• Transport, traffic, parking and access

A transport and traffic impact assessment will cover both the construction and operational phases. This includes a draft construction pedestrian and traffic management plan for the construction phase.

• Sustainability

The EIS will set out how Ecologically Sustainable Development (ESD) principles will be incorporated through the design, construction and operation of the redevelopment.

If you would like to know more, the Department of Planning, Industry and Environment's (DPI&E) Issued SEARs are available on the DPI&E's website.



Register your interest and stay up to date: stadiumausinfo@infrastructure.nsw.gov.au / 1800 962 221 / nsw.com/stadiumaus



Next steps?



Before finalising plans we would like to understand what's most important to you.

You can share your early thoughts by completing one of the feedback forms provided.

More information about Stadium Australia is available at nsw.com/stadiumaus. You can also get in touch for more information at stadiumausinfo@infrastructure.nsw.gov.au or by telephoning the community information line on 1800 962 221 between 9am and 5pm Monday to Friday.

There will also be further opportunities to learn more about the proposal when the State Significant Development Application is put on public exhibition later this year.



Indicative image of the redeveloped Stadium Australia

Register your interest and stay up to date: stadiumausinfo@infrastructure.nsw.gov.au / 1800 962 221 / nsw.com/stadiumaus





Stadium Australia Redevelopment

Project Newsletter



Artist impression

The NSW Government is redeveloping Stadium Australia as part of the biggest investment in the state's Major Stadia Network since the Sydney 2000 Olympics. The investment will deliver significant improvements to the fan experience whilst helping to attract and play host to the best events in the world.

What are we doing?

The redevelopment will involve reconfiguring the existing stadium to create a purpose built 70,000-seat rectangular sporting venue that brings fans closer to the on-field action and delivers improved facilities for both spectators and participants.

Major improvements include:

- 46,000 seats moving closer to the action than ever before
- A superior fan experience and stadium atmosphere
- Extending the roof line coverage to improve weather protection for spectators
- New food and beverage offerings, with greater choice
- New corporate hospitality suites and members' facilities
- Modern amenities and back of house facilities including gender neutral change rooms

The planning process

Infrastructure NSW, on behalf of the NSW Government, is overseeing planning and delivery of the Stadium Australia Redevelopment, which will be assessed as a State Significant Development under the Environmental Planning and Assessment Act 1979.

Infrastructure NSW is preparing an Environmental Impact Statement as part of the State Significant Development Application to be lodged with the Department of Planning, Industry and Environment.

The development application will seek approval to demolish sections of the existing stadium as well as design, construct and operate the redeveloped stadium.

Prior to lodging the development application we want to get feedback from stakeholders and the local community.

Please come along to one of our community events where you will have an opportunity to ask questions of the project team and our technical experts, learn more about the planning, design and construction process and provide feedback.

Community Information events:



Date: Saturday 17 August 2019
Time: 5pm to 7:30pm
Location: Stadium Australia (ANZ Stadium) outside light tower 3 by main entrance
Note: This will be a pop-up event at the Rabbitohs vs Bulldogs game.



Date: Tuesday 20 August 2019
Time: 4pm to 7pm
Venue: Sydney Olympic Park Train Station (eastern end)
Note: Please drop in at any time. There will be no formal presentation.

FAQ

1. Why does the Government need to redevelop the stadium?

The NSW Government's commitment to delivering high-quality cultural, sporting and tourism infrastructure supports the growth of NSW's vital tourism and events industry. A world-class stadia network will drive growth in the visitor economy, realise the economic and social benefits of a strong cultural and sporting sector, and support liveability for the people of NSW.

The majority of Sydney's major sporting codes, such as rugby league, rugby union and football (soccer) are played on a rectangular field and redeveloping the stadium will bring 46,000 fans closer to the on-field action. It will also bring the stadium up to contemporary standards and help position Sydney as Australia's leading sports and entertainment destination.

2. Where will my team play during the redevelopment?

Arrangements are being made in consultation with stadium operators, codes, clubs and key stakeholders to host games at other venues within the NSW Stadia network such as the new Bankwest Stadium.

3. How much will the project cost?

The total cost of the project is estimated at \$810 million.

4. When will construction commence?

Construction is planned to commence in mid-2020 and be completed in 2023.

5. Will the Sydney Olympics artworks around the outside of the stadium be removed?

There are no plans to remove Olympic artworks as part of the Stadium Australia redevelopment.

6. Where can I find out more?

Regular updates will be provided on the Stadium Australia website or you can get in contact via our 1800 number and email listed below.

7. How will I be impacted during construction?

We are currently preparing an Environmental Impact Statement which will detail the impacts of construction and how they will be mitigated. To find out more please visit one of our community events listed above.

8. How can I have a say?

A comprehensive program of consultation is underway with stakeholders and the community as part of the planning process. There will be plenty of opportunities for the community to have their say during planning and delivery of the Stadium Australia Redevelopment.

Infrastructure NSW is currently preparing an Environmental Impact Statement as part of the planning application. To help inform the EIS, we have arranged community information sessions and pop-up stalls where feedback can be provided. Please drop by and fill out a feedback form.

The Environmental Impact Statement will also be placed on public exhibition by the Department of Planning, Industry and Environment, which will provide an opportunity for community feedback, before it is assessed.

Stay up to date on the project

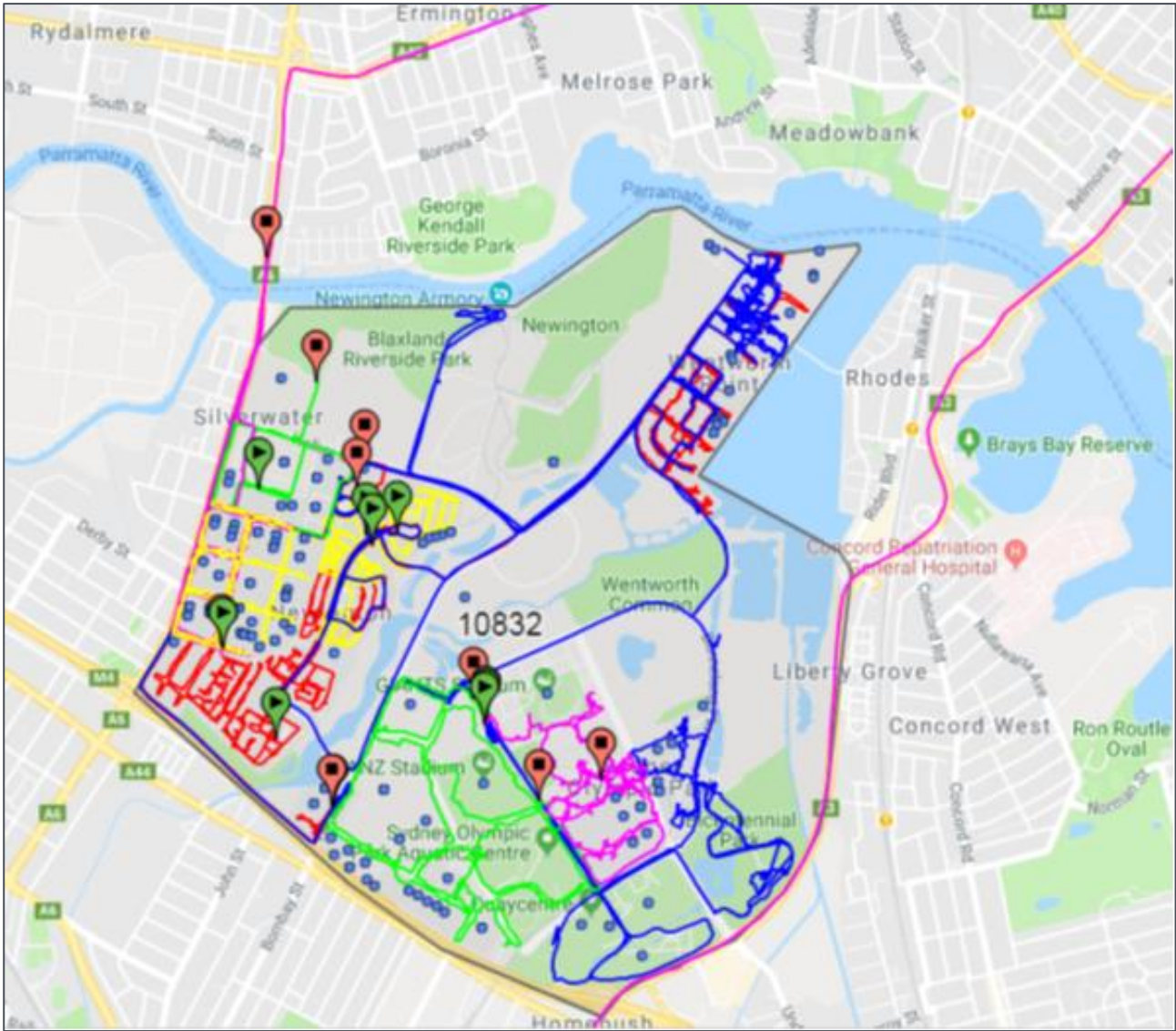
Register your interest in the project by emailing or phoning us. Alternatively, you can stay up to date with the latest information on our website.

- stadiumausinfo@infrastructure.nsw.gov.au
- 1800 962 221
- insw.com/stadiumaus



Artist Impression

Attachment E: Confirmation of successful project newsletter delivery from KJA’s distribution company, using Global Positioning System data



Attachment F: Stakeholder letter offering a meeting to discuss the Stadium Australia redevelopment



13 August 2019

XXX
XXX
XXX
XXX

PO Box R220
Royal Exchange NSW 1225
P+612 8016 0100
E mail@insw.com
www.insw.com
ABN 85 031 302 516

Dear XXX

RE: Stadium Australia Redevelopment

The NSW Government is redeveloping Stadium Australia, as part of the biggest investment in the state's Major Stadia Network since the Sydney 2000 Olympics.

The investment will deliver significant improvements to the fan experience whilst helping NSW to attract and play host to the best events in the world.

The refurbishment will involve reconfiguring the existing stadium to create a purpose-built 70,000-seat rectangular sporting venue that brings fans closer to the on-field action and delivers improved facilities for both spectators and participants.

Major improvements include:

- 46,000 seats moving closer to the action than ever before
- A superior fan experience and stadium atmosphere
- Extending the roof line coverage to improve weather protection for spectators
- New food and beverage offerings, with greater choice
- New corporate hospitality suites and member's facilities
- Modern amenities and back of house facilities including gender neutral change rooms.

Infrastructure NSW, on behalf of the NSW Government, is overseeing planning and delivery of the Stadium Australia Redevelopment which will be assessed as a State Significant Development under the Environmental Planning and Assessment Act 1979.

Infrastructure NSW is preparing an Environmental Impact Statement (EIS) as part of the planning application, which will seek approval to demolish sections of the existing stadium as well as design, construct and operate the redeveloped stadium.

Stakeholder feedback is vital to the overall success of the project. Prior to lodging the development application, we want to get feedback from key stakeholders and the local community on the proposal.

As a key stakeholder, Infrastructure NSW would like to offer you the opportunity to meet and get a briefing on the project from our team.



PO Box R220
Royal Exchange NSW 1225
P+612 8016 0100
Email insw@insw.com
www.insw.com
ABN 85 031 302 516

Should you wish to arrange a meeting with the project team please contact us on 1800 962 221.

In the meantime, you can find general information about the redevelopment of Stadium Australia on the project website (insw.com/stadiumaus), or you can contact us to find out more at stadiumausinfo@infrastructure.nsw.gov.au or on the number above.

Yours sincerely

Tom Gellibrand
Head of Projects NSW
Infrastructure NSW



Stadium Australia Redevelopment Feedback Form

Thank you for attending today's community information event about the redevelopment of Stadium Australia.

Please take a moment to share your thoughts about the redevelopment in this box.

.....

.....

.....

.....

.....

.....

.....

.....

If you have further comments, please write on the back of this page.

Further opportunities to have your say during the State Significant Development Application (SSDA) process will be widely publicised. Feedback received will be carefully considered and formally responded to as part of this.

Please tick the box if you wish to receive future Infrastructure NSW updates about the project.

☐


Name:

Address:

Telephone number / Email:

Your information will be used only as part of the Stadium Australia Redevelopment SSDA process.

Register your interest and stay up to date: stadiumausinfo@infrastructure.nsw.gov.au / 1800 962 221 / insw.com/stadiumaus




STADIUM AUSTRALIA REDEVELOPMENT


The NSW Government is redeveloping Stadium Australia into a permanent rectangular venue with 70,000 seats. This redevelopment will move seats closer to the field of play and update the stadium to contemporary standards providing a world class experience for spectators and enhancing NSW's position as a global and sporting destination.

[Home](#) / [Projects NSW](#) / [Stadium Australia Redevelopment](#)


[ABOUT](#) | [LATEST UPDATES](#) | [GALLERY](#) | [LIBRARY](#)



Artist impression: Stadium Australia aerial



Artist impression: Stadium Australia entry



Artist impression: Stadium Australia
internal bowl

[BACK TO TOP](#)



Infrastructure NSW

Stadium Australia Redevelopment

The NSW Government is redeveloping Stadium Australia as part of the biggest investment in the state's Major Stadia Network since the Sydney 2000 Olympics. The investment will deliver significant improvements to the fan experience whilst helping to drive growth in the State's visitor economy and enabling NSW to attract and play host to the best events in the world.

Infrastructure NSW, on behalf of the NSW Government, is preparing an Environmental Impact Statement (EIS) as part of the State Significant Development Application (SSDA) to be lodged with the Department of Planning, Industry and Environment (DPI&E).

Community feedback and input is vital to the overall success of the project. Prior to lodging the EIS, we would like to hear from you.

Please come along to one of our community events where you will have an opportunity to ask questions of the project team, learn more about the planning and design, and provide important feedback.

Two events will be held at the below dates, times and locations. Feel free to drop in at any time, as there will not be a formal presentation.

Date: Saturday 17 August 2019

Time: 5pm to 7:30pm

Location: Stadium Australia (ANZ Stadium) outside light tower 3 by the main entrance

Note: This will be a pop-up event at the Rabbitohs vs Bulldogs game.

Date: Tuesday 20 August 2019

Time: 4pm to 7pm

Location: Sydney Olympic Park Train Station (Eastern End)

Note: Please drop in at any time. There will be no formal presentation.

To speak to a member of our project team, or to provide additional feedback please contact:
1800 962 221 | insw.com/stadiumaus | stadiumausinfo@infrastructure.nsw.gov.au

BLZ_SB0348



The Stadium Australia Redevelopment

- Reconfigure current stadium – to create permanent rectangular venue with 70,000 seat capacity
 - Redevelop stands at each end of playing field – north and south stands
 - Redevelop the lower and middle seating bowl of east and west stands – to move spectators, corporate suites and members closer to the field of play than ever before
 - Roof extension on east and west stand
 - Corporate suites moving from level 3 to level 2
 - Modernised unisex player facilities and change rooms
 - Modernised amenities including more women's toilets
 - Upgraded information and communication technology

Stadium Australia Redevelopment – desired outcomes

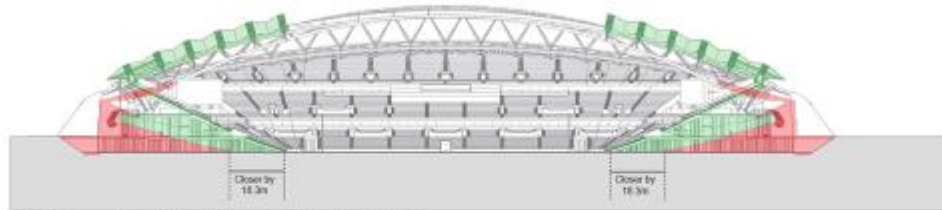
- Improved spectator experience
 - Seats closer to the action across levels 1 to 5
 - New and improved stadium technology
 - Reconfigured new members bars, restaurants and lounges
 - Upgraded food and beverage offering including opportunities for level 0 of the new north stand
- Better stadium atmosphere
- Reconfigured staging and equipment storage facilities in the southern stand
- Greater roof coverage – targeting 100% seat coverage
- Largest purpose built rectangular stadium in Australia



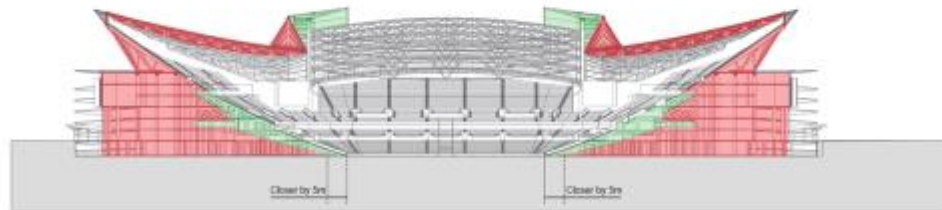
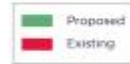
Proposed demolition of seating bowls, roof and facade



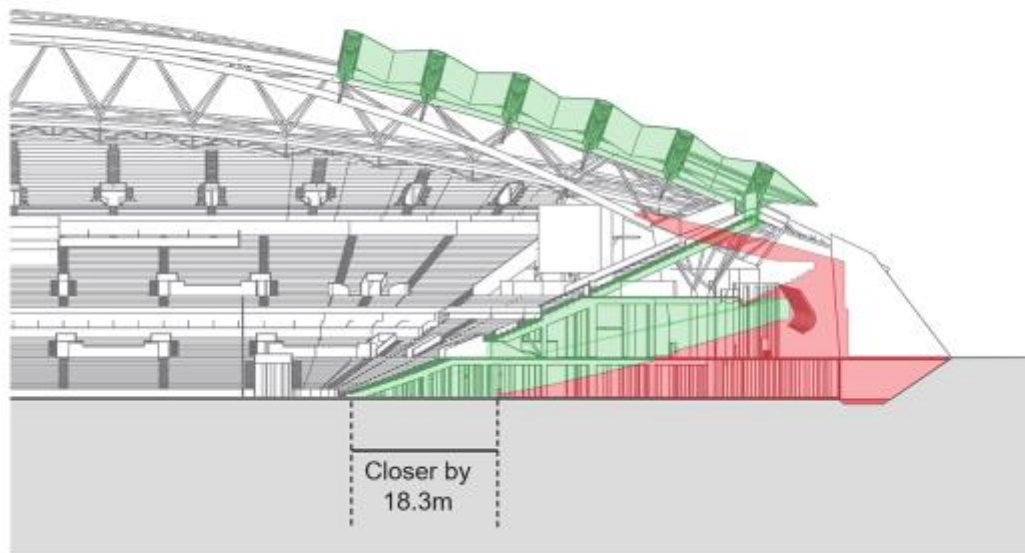
Comparing the present and redeveloped stadium



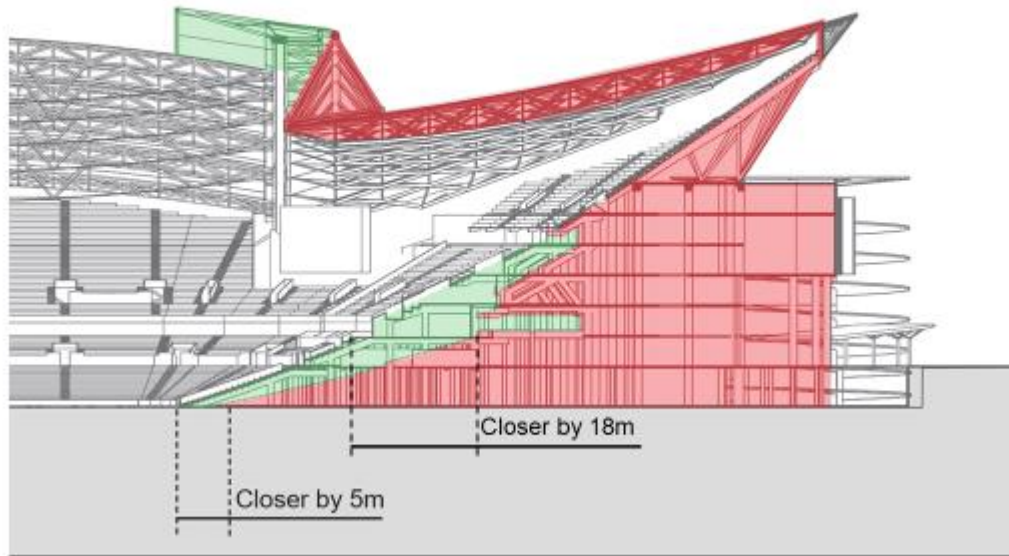
Indicative image showing the redevelopment of the north and south stands



North and South Stands



East and West Stands



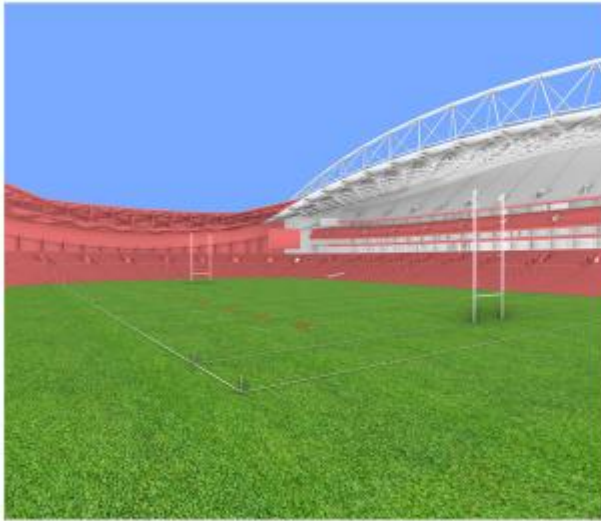
* Precedent images- subject to design



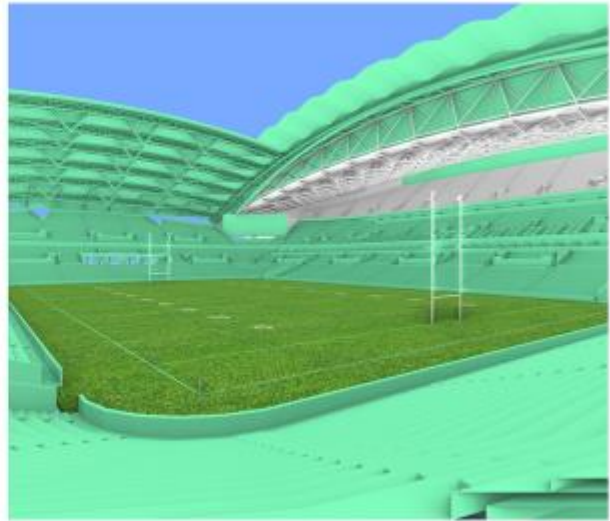




Current View



Redeveloped View








**Artist impression only*



Delivery timelines

June 2019	Infrastructure NSW requests Secretary's Environmental Assessment Requirements (SEARs)	 WE ARE HERE
July 2019	Department of Planning, Industry & Environment (DPI&E) prepares & issues SEARs for preparation of Environmental Impact Statement (EIS)	
August 2019	Infrastructure NSW prepares EIS to address SEARs. Initial community and stakeholder consultation	
September 2019	Infrastructure NSW lodges EIS. DPI&E places EIS on public exhibition	
Late 2019	Infrastructure NSW prepares a Response to Submissions report	
Early 2020	DPI&E prepares Assessment Report and recommended conditions	
Mid-2020	Construction commences	
Early 2023	Operational readiness	

**indicative timings only*

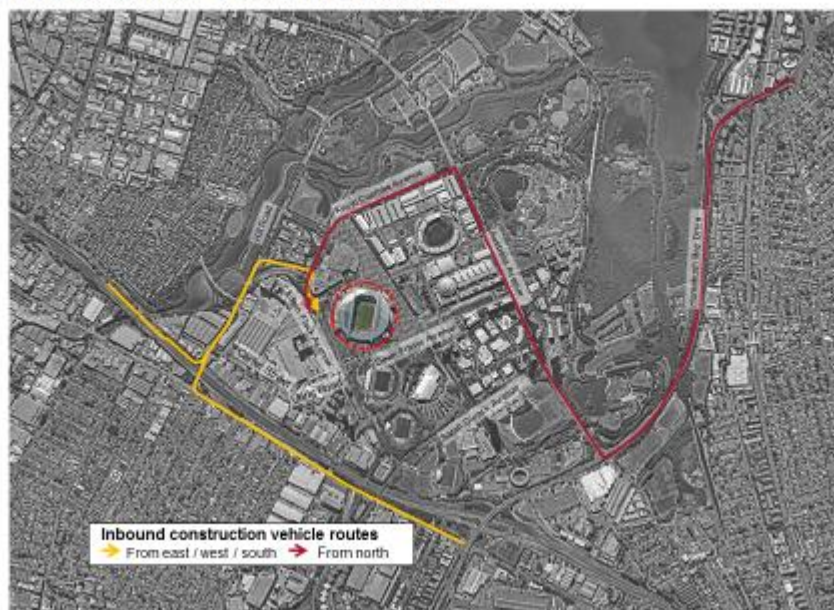


Status

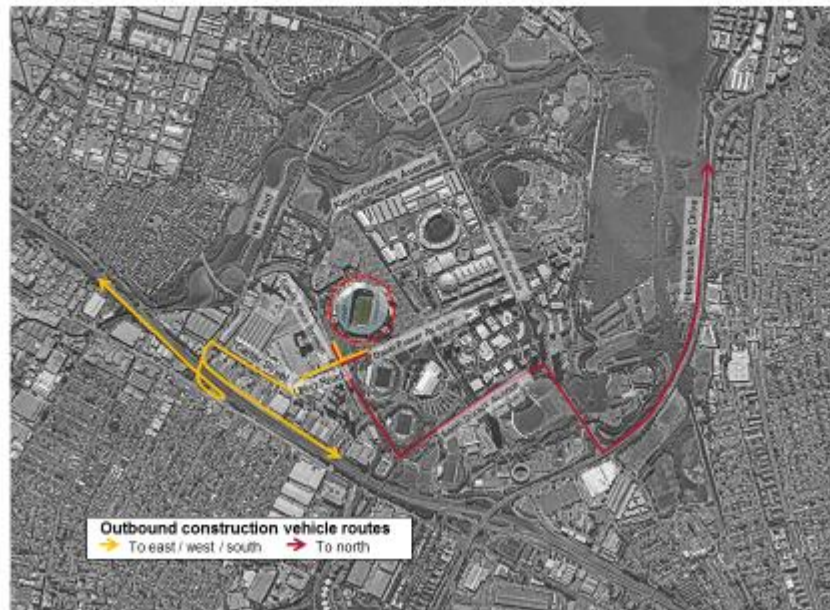
- Secretary's Environmental Assessment Requirements (SEARs) issued on 17 July 2019
- Preparation of planning documentation
 - ✓ Architecture and urban design report
 - ✓ Visual Impact Analysis
 - ✓ Construction Management Plan
 - ✓ Air Quality Assessment
 - ✓ Transport Impact Assessment
 - ✓ Geotechnical report
 - ✓ Structural Statement
 - ✓ Contamination assessment
 - ✓ Access statement
 - ✓ Heritage impact statement
 - ✓ Arboricultural report
 - ✓ CPTED assessment
 - ✓ Wind assessment
 - ✓ Biodiversity Development Assessment Report
 - ✓ ESD report
 - ✓ Services and utilities impact assessment
 - ✓ Social and economic impact assessment
 - ✓ Consultation summary report
 - ✓ Servicing and operational waste management plan
 - ✓ Event management statement



Inbound construction vehicle routes



Outbound construction vehicle routes



Construction boundary



Next steps

- Public exhibition
- Ongoing consultation with key stakeholders and the community
- Design and procurement documentation development.





KJA
an ERM Group company

Sydney office

Level 9, 2 Elizabeth Plaza, North Sydney NSW 2060
PO Box 302, North Sydney NSW 2059
T 02 9955 5040

Melbourne office

Suite 101, 620 Bourke Street Melbourne VIC 3000
PO Box 16215, Collins Street West VIC 8007
T 03 9005 2030

E info@kjassoc.com.au | www.kjassoc.com.au