

# FORT STREET PUBLIC SCHOOL OBSERVATORY HILL ENVIRONMENTAL EDUCATION CENTRE

Observatory Hill Upper Fort Street Sydney NSW 2000

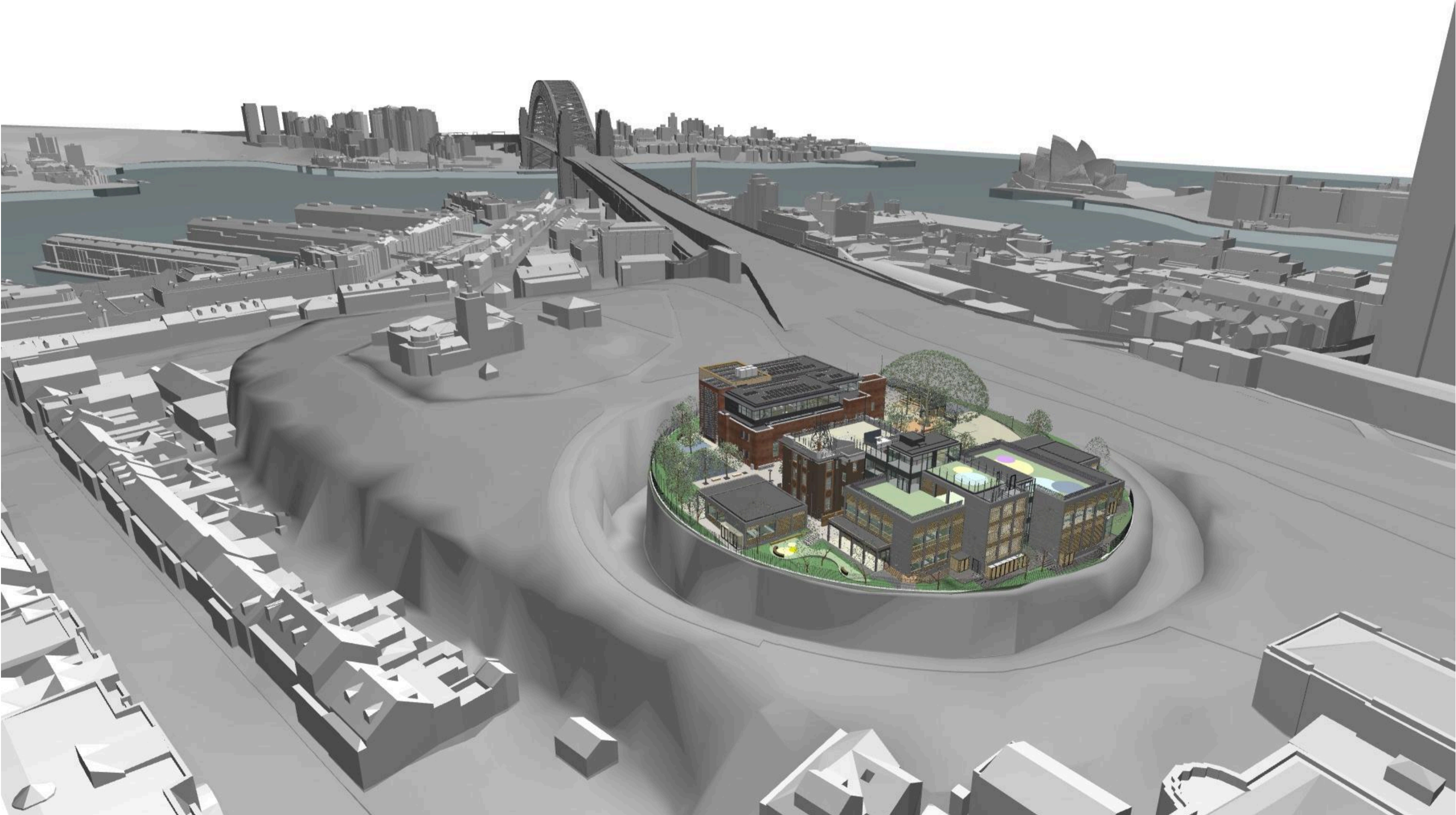
GENERAL NOTES

ALL DIMENSIONS AND EXISTING CONDITIONS  
◦ SHALL BE CHECKED AND VERIFIED BY THE CONTRACTOR BEFORE PROCEEDING WITH THE WORK.  
◦ ALL LEVELS RELATIVE TO 'AUSTRALIAN HEIGHT DATUM'.  
◦ DO NOT SCALE DRAWINGS.  
◦ USE FIGURED DIMENSIONS ONLY.

legend

## DRAWING LIST

Drawing Number	Revision	Name of Plan	Date	Issue Description
DA-1001	SSDA03	Cover Sheet	2/9/22	s4.55 Mod 2
DA-1101	SSDA02	Location Plan - Existing	28/1/21	s4.55 Mod 1
DA-1201	SSDA02	Site Plan Existing	28/1/21	s4.55 Mod 1
DA-1202	SSDA02	Site Analysis	28/1/21	s4.55 Mod 1
DA-1211	SSDA02	Site Plan Proposed	29/10/21	s4.55 Mod 1
DA-2001	SSDA03	Proposed Plan – Lower Ground 1	2/9/22	s4.55 Mod 2
DA-2002	SSDA03	Proposed Plan – Ground	2/9/22	s4.55 Mod 2
DA-2003	SSDA03	Proposed Plan – Level 1	2/9/22	s4.55 Mod 2
DA-2004	SSDA02	Proposed Plan – Level 2	29/10/21	s4.55 Mod 1
DA-2005	SSDA02	Proposed Plan – Level 3	29/10/21	s4.55 Mod 1
DA-2006	SSDA03	Proposed Plan – Roof	2/9/22	s4.55 Mod 2
DA-2101	SSDA03	Demolition Plan – Ground	2/9/22	s4.55 Mod 2
DA-2102	SSDA03	Demolition Plan – Level 1	2/9/22	s4.55 Mod 2
DA-2103	SSDA03	Demolition Plan – Level 2	2/9/22	s4.55 Mod 2
DA-2104	SSDA02	Demolition Plan - Roof	28/1/21	s4.55 Mod 1
DA-2105	SSDA01	Services Excavation On Demolition Plan	18/12/19	SSDA
DA-3001	SSDA03	Elevations North East	2/9/22	s4.55 Mod 2
DA-3002	SSDA03	Elevations South West	2/9/22	s4.55 Mod 2
DA-4001	SSDA03	Sections 1	2/9/22	s4.55 Mod 2
DA-4002	SSDA03	Sections 2	2/9/22	s4.55 Mod 2
DA-4003	SSDA03	Sections 3	2/9/22	s4.55 Mod 2
DA-4004	SSDA03	Sections 4	2/9/22	s4.55 Mod 2
DA-5001	SSDA02	Detailed Areas – Heritage Wall	28/1/21	s4.55 Mod 1
DA-5002	SSDA02	Detailed Areas – Heritage Wall Details	28/1/21	s4.55 Mod 1
DA-5003	SSDA02	Detailed Areas – Bradfield Mechanical Exhaust	28/1/21	s4.55 Mod 1
DA-5004	SSDA02	Detailed Areas – Surgeon's Cottage	28/1/21	s4.55 Mod 1
DA-5005	SSDA01	Detailed Areas – MET Elevator shaft	18/12/19	SSDA
DA-5006	SSDA02	Detailed Areas – FSPS Existing Hall Skylight	28/1/21	s4.55 Mod 1
DA-5008	SSDA02	Detailed Areas - Bradfield Mechanical Exhaust Sections	28/1/21	s4.55 Mod 1
A-03002	SSDA02	Exterior Finishes Schedule	29/5/20	RTS
DA-5901	SSDA02	FT01 / FT02 Building A	28/1/21	s4.55 Mod 1
DA-5902	SSDA02	FT03 Building D	28/1/21	s4.55 Mod 1
DA-5903	SSDA02	FT04 N / FT04 W Building D	28/1/21	s4.55 Mod 1
DA-5904	SSDA02	FT05 / FT06 Building C	28/1/21	s4.55 Mod 1
DA-5905	SSDA02	FT07 Building F/G	28/1/21	s4.55 Mod 1
DA-5906	SSDA02	FT08 / FT09 / FT14 N Building M	28/1/21	s4.55 Mod 1
DA-5907	SSDA02	FT10 Building J/H	28/1/21	s4.55 Mod 1
DA-5908	SSDA02	FT11 C.O.L.A.	28/1/21	s4.55 Mod 1
DA-5909	SSDA02	FT12 Services Enclosure	28/1/21	s4.55 Mod 1
DA-5910	SSDA02	FT13 Glass Infill Building J/HG	28/1/21	s4.55 Mod 1
DA-9011	SSDA02	Exterior Finishes Samples	28/1/21	s4.55 Mod 1
DA-8001	SSDA02	Landscape Design Plan	5/4/22	B58
DA-8002	SSDA02	Landscape Ground Floor	5/4/22	B58
DA-8003	SSDA02	Landscape Roof Plan	5/4/22	B58
DA-8004	SSDA02	Tree Management Plan	5/4/22	B58
DA-8005	SSDA02	Landscape Planting Ground Plan – Phase 2	5/4/22	B58
DA-8006	SSDA02	Landscape Planting Roof Plan	5/4/22	B58
DA-8007	SSDA02	Landscape Soil Depth Ground Plan – Phase 2	5/4/22	B58
DA-8008	SSDA02	Landscape Soil Depth Roof Plan	5/4/22	B58
DA-8009	SSDA02	Landscape Ground Floor – Phase 1	5/4/22	B58
DA-8010	SSDA02	Landscape Planting Ground Plan – Phase 1	5/4/22	B58
DA-8011	SSDA02	Landscape Soil Depth Ground Plan – Phase 1	5/4/22	B58
DA-8101	SSDA02	Landscape Sections	5/4/22	B58
DA-8201	SSDA02	Landscape Details	5/4/22	B58



SSDA032/9/22\$455 Modification 2AWYDB

SSDA0228/1/21\$455 ModificationAWY

revdate

name

by

chk

fjmt studio architecture interiors landscape urban community

sydney melbourne uk

Level 5, 70 King Street t +61 2 9291 7077 w fjmtstudio.com

fjmt

project

**Fort Street Public School**  
Observatory Hill  
Sydney NSW 2000

title

**General  
Cover Sheet**

scale

first issued

23/9/19

project code

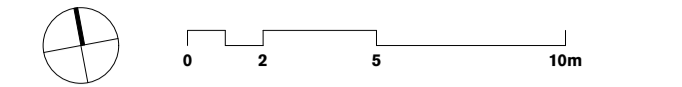
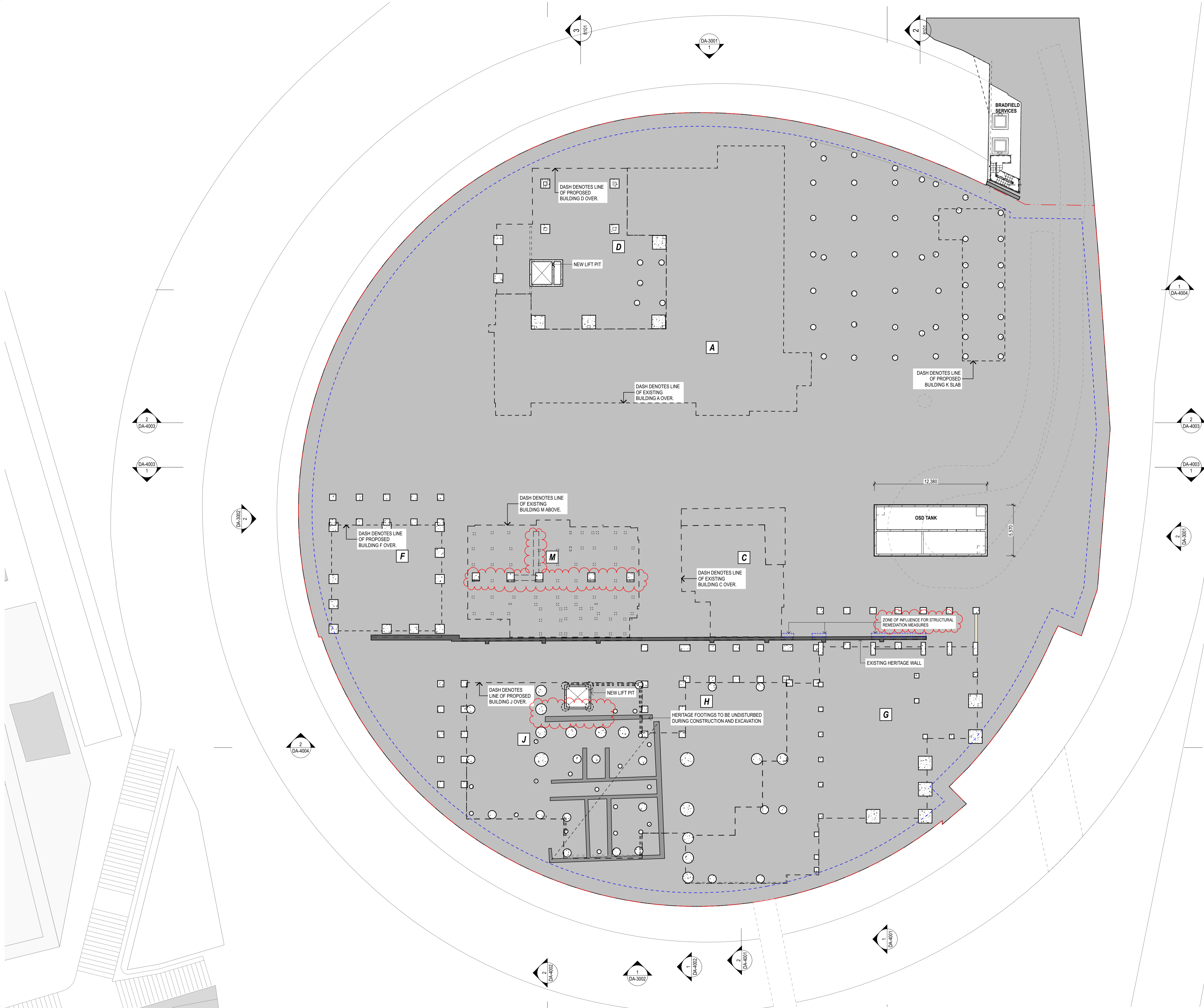
sheet no.

revision

**FSS**

**DA-1001**

**SSDA03**



**GENERAL NOTES**

- ALL DIMENSIONS AND EXISTING CONDITIONS SHALL BE CHECKED AND VERIFIED BY THE CONTRACTOR BEFORE PROCEEDING WITH THE WORK.
- ALL LEVELS RELATIVE TO 'AUSTRALIAN HEIGHT DATUM'.
- DO NOT SCALE DRAWINGS.
- USE FIGURED DIMENSIONS ONLY.

**legend**

- SITE BOUNDARY

**NOTE:**

- FURNITURE SHOWN INDICATIVELY. SUBJECT TO FURTHER CONSULTATION AND COORDINATION.

**FUTURE SCOPE**

**COLD SHELL**

**COLD SHELL Inclusions:**

- Envelope and superstructure including structural floors and walls, facades, roofs, etc.
- Essential circulation elements including required stairs, lifts, fire isolated passages, etc.
- Irreversible fire isolation measures to services and detection, sprinklering, to facilitate minimum egress requirements, etc.
- Essential services infrastructure including in- ground and/or encased trunking pathways and risers to facilitate future briefed functions.
- Section J NCC requirements where not subject to future alteration due to fitout requirements.

**COLD SHELL Exclusions:**

- All internal non-essential walls, suspended ceilings, linings and finishes.
- All Fitout, Furnishings and Equipment (FFE), lights, hydraulic fixtures, ICT, etc.
- Services from trunk reticulation paths to FFE installations
- Essential life safety measures to satisfy fitout requirements.

SSDA03	2/9/22	S455 Modification 2	AWY	DB
SSDA02	28/1/21	S455 Modification	AWY	DB
rev	date	name	by	chk

first studio architecture interiors landscape urban community  
sydney melbourne uk  
Level 5, 70 King Street t +61 2 9251 7077 w firststudio.com

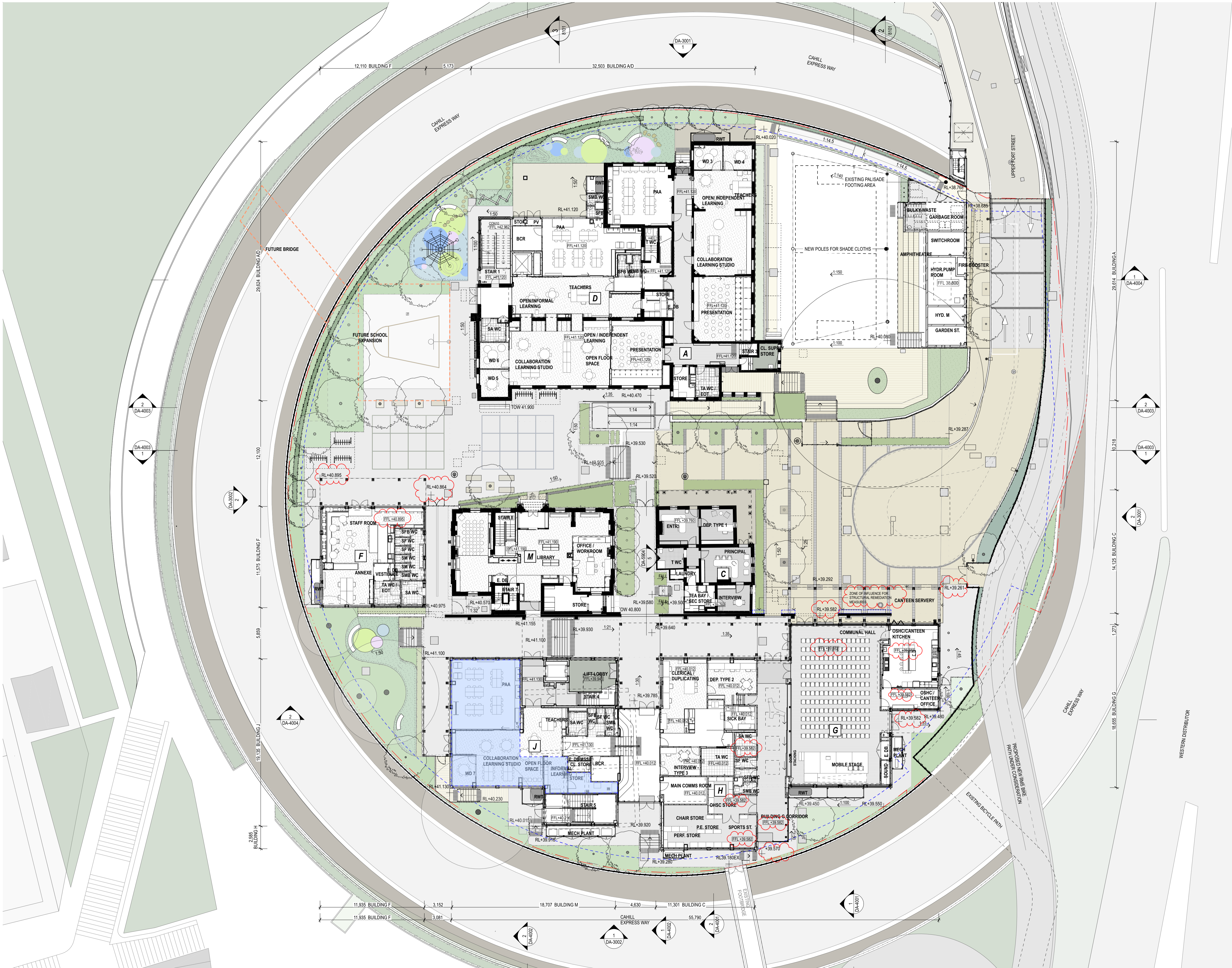


**project**  
**Fort Street Public School**  
Observatory Hill  
Sydney NSW 2000

**title**  
**General Arrangement Plans**  
**Proposed Plan - Lower Ground 1**

scale	1:200 @ A1	first issued	23/9/19
project code	sheet no.	revision	
FSS	DA-2001	SSDA03	

## Section 4.55 Modification 2 - SSD-10340-Mod-2



**GENERAL NOTES**

- ALL DIMENSIONS AND EXISTING CONDITIONS SHALL BE CHECKED AND VERIFIED BY THE CONTRACTOR BEFORE PROCEEDING WITH THE WORK.
- ALL LEVELS RELATIVE TO AUSTRALIAN HEIGHT DATUM.
- DO NOT SCALE DRAWINGS.
- USE FIGURED DIMENSIONS ONLY.

Legend

- SITE BOUNDARY
- FUTURE SCOPE
- COLD SHELL

**NOTE:**

- FURNITURE SHOWN INDICATIVELY. SUBJECT TO FURTHER CONSULTATION AND COORDINATION

**COLD SHELL Inclusions:**

- Envelope and superstructure including structural floors and walls, facades, roofs, etc.
- Essential circulation elements including required stairs, lifts, fire isolated passages, etc.
- Irreversible fire isolation measures to services and detection, sprinklering, to facilitate minimum egress requirements, etc.
- Essential services infrastructure including in-ground and/or encased trunking pathways and risers to facilitate future briefed functions.
- Section J NCC requirements where not subject to future alteration due to fitout requirements.

**COLD SHELL Exclusions:**

- All internal non-essential walls, suspended ceilings, linings and finishes.
- All Fitout, Furnishings and Equipment (FFE), lights, hydraulic fixtures, ICT, etc.
- Services from trunk reticulation paths to FFE installations
- Essential life safety measures to satisfy fitout requirements.

rev	date	name	by	chk
SSDA03	2/9/22	S455 Modification 2	AWY	DB
SSDA02	28/1/21	S455 Modification	AWY	DB

rev date name by chk

first studio architecture interiors landscape urban community  
sydney melbourne uk  
Level 5, 70 King Street t +61 2 9291 7077 w firststudio.com

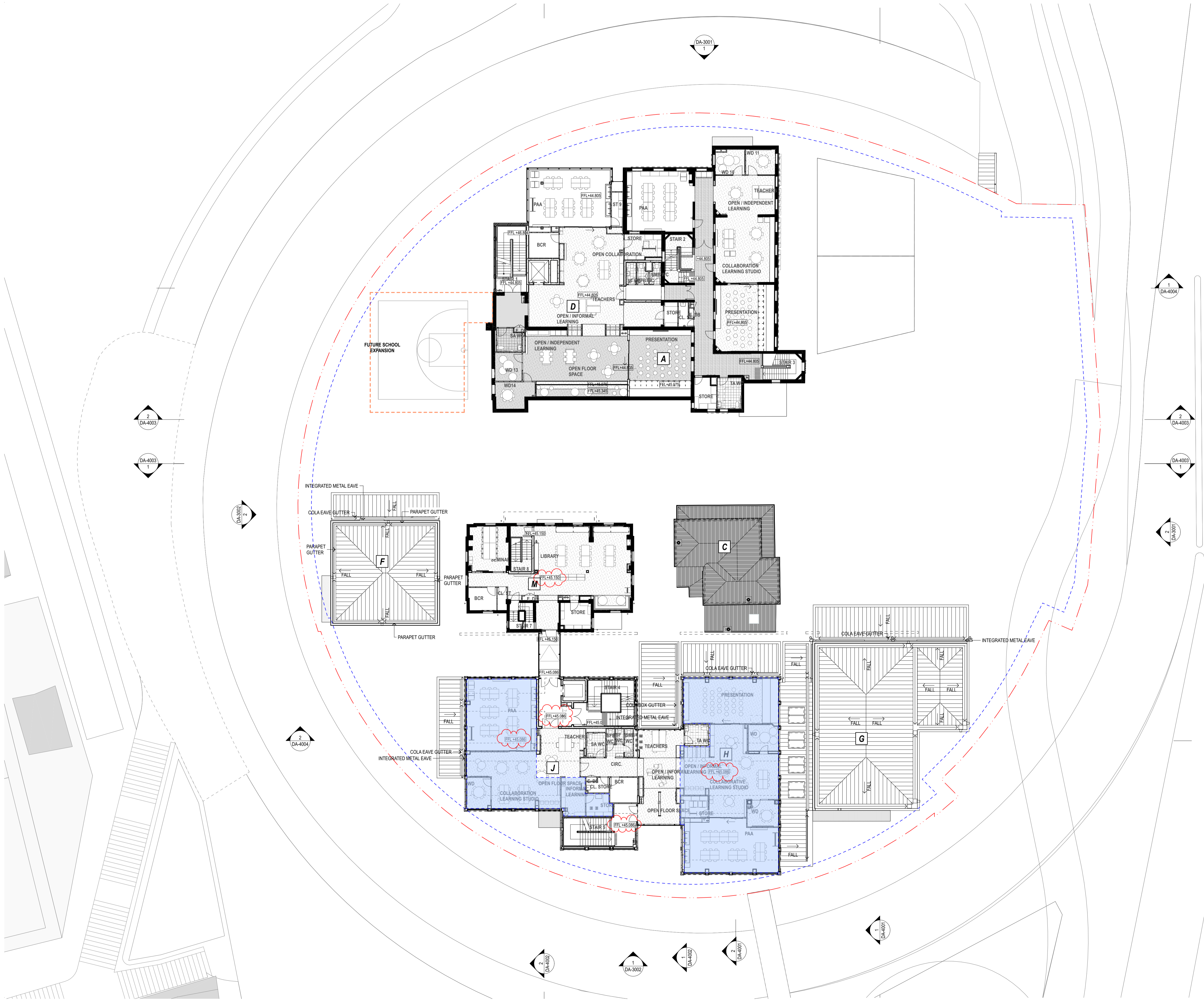
**project**  
**Fort Street Public School**  
Observatory Hill  
Sydney NSW 2000

**title**  
**General Arrangement Plans**  
**Proposed Plan - Ground**

scale 1:200 @ A1 first issued 23/9/19

project code	sheet no.	revision
FSS	DA-2002	SSDA03

Section 4.55 Modification 2 - SSD-10340-Mod-2



**GENERAL NOTES**

- ALL DIMENSIONS AND EXISTING CONDITIONS SHALL BE CHECKED AND VERIFIED BY THE CONTRACTOR BEFORE PROCEEDING WITH THE WORK.
- ALL LEVELS RELATIVE TO 'AUSTRALIAN HEIGHT DATUM'.
- DO NOT SCALE DRAWINGS.
- USE FIGURED DIMENSIONS ONLY.

Legend

- SITE BOUNDARY

**NOTE:**

- FURNITURE SHOWN INDICATIVELY. SUBJECT TO FURTHER CONSULTATION AND COORDINATION

**FUTURE SCOPE**

**COLD SHELL**

**COLD SHELL Inclusions:**

- Envelope and superstructure including structural floors and walls, facades, roofs, etc.
- Essential circulation elements including required stairs, lifts, fire isolated passages, etc.
- Irreversible fire isolation measures to services and detection, sprinklering, to facilitate minimum egress requirements, etc.
- Essential services infrastructure including in- ground and/or encased trunking pathways and risers to facilitate future briefed functions.
- Section J NCC requirements where not subject to future alteration due to fitout requirements.

**COLD SHELL Exclusions:**

- All internal non-essential walls, suspended ceilings, linings and finishes.
- All Fitout, Furnishings and Equipment (FFE), lights, hydraulic fixtures, ICT, etc.
- Services from trunk reticulation paths to FFE installations
- Essential life safety measures to satisfy fitout requirements.

SSDA03	2/9/22	S455 Modification 2	AWY	DB
SSDA02	28/1/21	S455 Modification	AWY	DB

rev	date	name	by	chk
-----	------	------	----	-----

first studio architecture interiors landscape urban community  
sydney melbourne uk  
Level 5, 70 King Street t +61 2 9291 7077 w firststudio.com



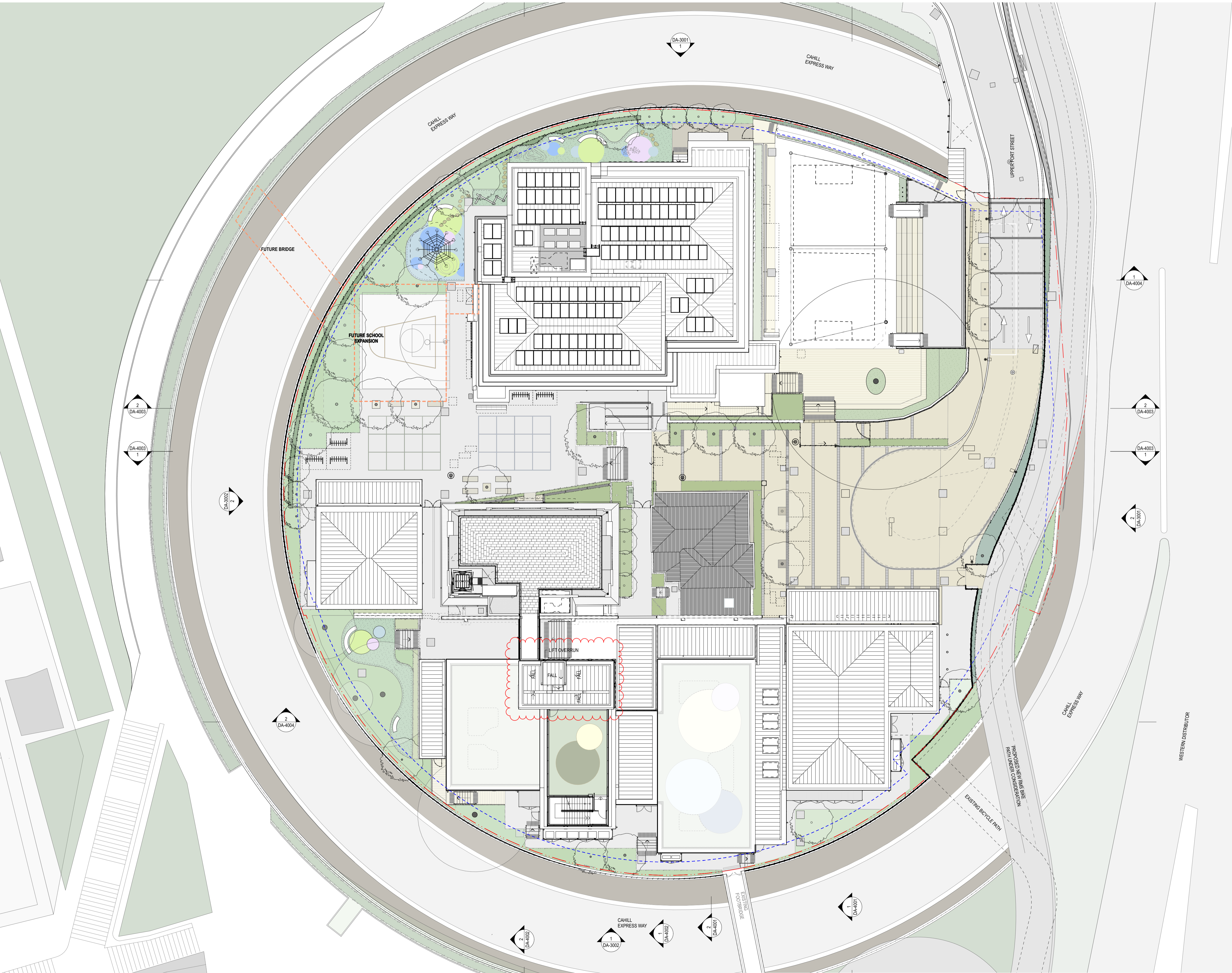
project  
**Fort Street Public School**  
Observatory Hill  
Sydney NSW 2000

title  
**General Arrangement Plans**  
**Proposed Plan - Level 1**

scale 1:200 @ A1 first issued 23/9/19

project code	sheet no.	revision
FSS	DA-2003	SSDA03

## Section 4.55 Modification 2 - SSD-10340-Mod-2



02510m

**GENERAL NOTES**

- ALL DIMENSIONS AND EXISTING CONDITIONS SHALL BE CHECKED AND VERIFIED BY THE CONTRACTOR BEFORE PROCEEDING WITH THE WORK.
- ALL LEVELS RELATIVE TO 'AUSTRALIAN HEIGHT DATUM'.
- DO NOT SCALE DRAWINGS.
- USE FIGURED DIMENSIONS ONLY.

Legend

---

SITE BOUNDARY

---

FUTURE SCOPE

---

COLD SHELL

**NOTE:**

FURNITURE SHOWN INDICATIVELY. SUBJECT TO FURTHER CONSULTATION AND COORDINATION

**COLD SHELL Inclusions:**

- Envelope and superstructure including structural floors and walls, facades, roofs, etc.
- Essential circulation elements including required stairs, lifts, fire isolated passages, etc.
- Irreversible fire isolation measures to services and detection, sprinklering, to facilitate minimum egress requirements, etc.
- Essential services infrastructure including in-ground and/or encased trunking pathways and risers to facilitate future briefed functions.
- Section J NCC requirements where not subject to future alteration due to fitout requirements.

**COLD SHELL Exclusions:**

- All internal non-essential walls, suspended ceilings, linings and finishes.
- All Fitout, Furnishings and Equipment (FFE), lights, hydraulic fixtures, ICT, etc.
- Services from trunk reticulation paths to FFE installations
- Essential life safety measures to satisfy fitout requirements.

SSDA03	2/9/22	S455 Modification 2	AWY	DB
SSDA02	28/1/21	S455 Modification	AWY	DB

rev	date	name	by	chk

first studio architecture interiors landscape urban community

sydney melbourne uk

Level 5, 70 King Street t +61 2 9251 7077 w firststudio.com

project

**Fort Street Public School**

Observatory Hill

Sydney NSW 2000

title

**General Arrangement Plans**

**Proposed Plan - Roof**

scale	1:200 @ A1	first issued	23/9/19
project code	sheet no.	revision	
FSS	DA-2006	SSDA03	

Section 4.55 Modification 2 - SSD-10340-Mod-2

ALL DIMENSIONS AND EXISTING CONDITIONS  
SHALL BE CHECKED AND VERIFIED BY THE  
CONTRACTOR BEFORE PROCEEDING WITH THE WORK.  
ALL LEVELS RELATIVE TO 'AUSTRALIAN HEIGHT DATUM'.  
DO NOT SCALE DRAWINGS.  
USE FIGURED DIMENSIONS ONLY.

## EMOLITION

WINDOW REMOVED AND WALL  
UNDERNEATH DEMOLISHED TO  
FLOOR LEVEL

S4DA03	2/9/22	S455 Modification 2	AWY	
S4DA02	28/1/21	S455 Modification	AWY	
S4DA01	18/12/19	State Significance Development Application	CTK	
rev	date	name	by	chk

ijmt studio architecture interiors landscape urban community  
sydney melbourne uk  
level 5, 70 King Street t +61 2 9251 7077 w [ijmtstudio.com](http://ijmtstudio.com)

jmt

**Fort Street Public School**  
Observatory Hill  
Sydney NSW 2000

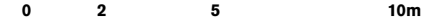
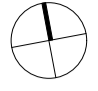
# Demolition Plans

## Demolition Plan - Ground

scale	1:200 @ A1	first issued	23/9/19
-------	------------	--------------	---------

project code	sheet no.	revision
<b>FSS</b>	<b>DA-2101</b>	<b>SSDA03</b>


## Section 4.55 Modification 2 - SSD-10340-Mod-2




**GENERAL NOTES**

- ALL DIMENSIONS AND EXISTING CONDITIONS SHALL BE CHECKED AND VERIFIED BY THE CONTRACTOR BEFORE PROCEEDING WITH THE WORK.
- ALL LEVELS RELATIVE TO 'AUSTRALIAN HEIGHT DATUM'.
- DO NOT SCALE DRAWINGS.
- USE FIGURED DIMENSIONS ONLY.

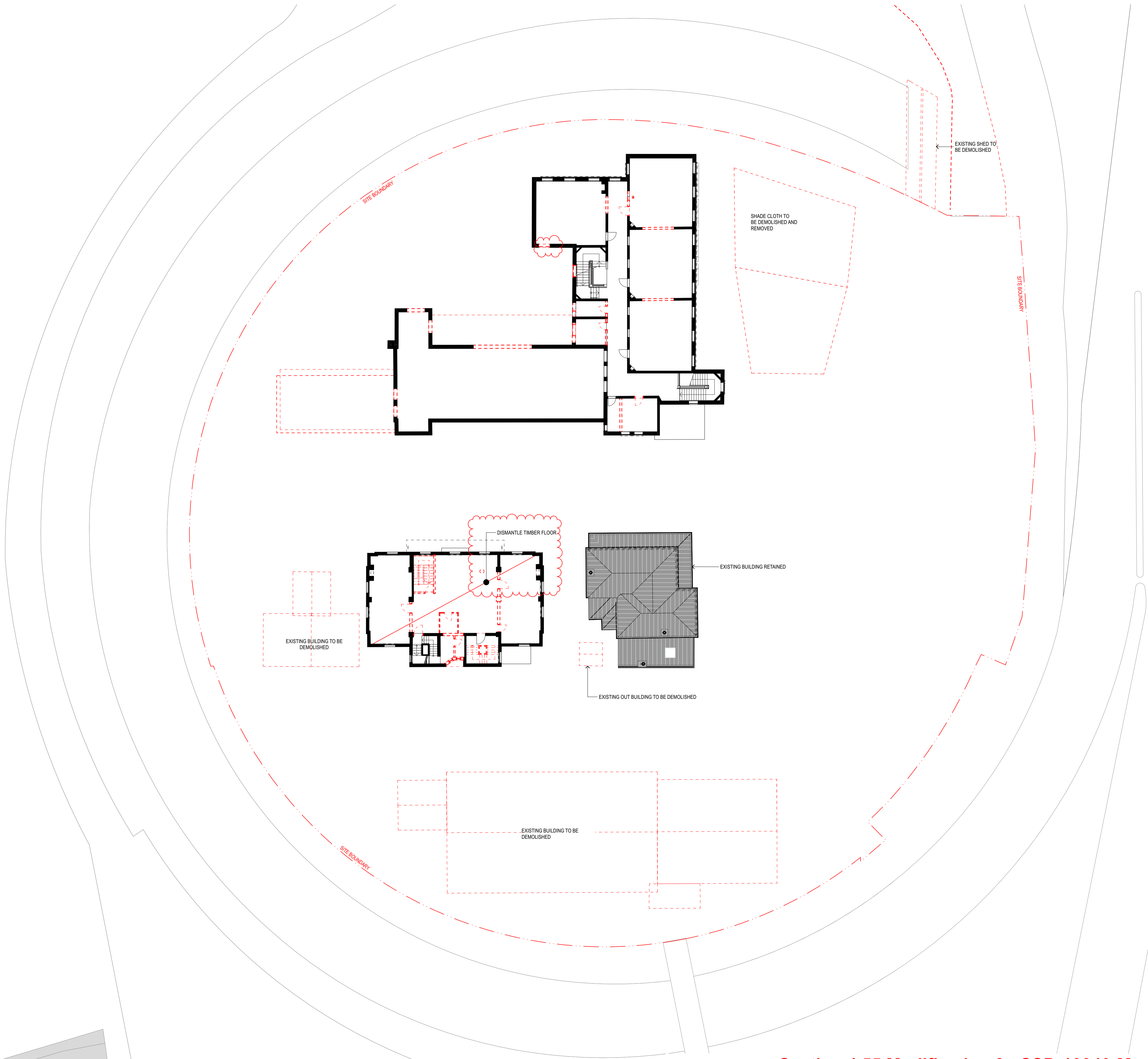
legend



DEMOLITION



WINDOW REMOVED AND WALL UNDERNEATH DEMOLISHED TO FLOOR LEVEL



Section 4.55 Modification 2 - SSD-10340-Mod-2

SSDA03	2/9/22	S455 Modification 2	AWY	
SSDA02	28/1/21	S455 Modification	AWY	
SSDA01	18/12/19	State Significance Development Application	CTK	
rev	date	name	by	chk

fjmt studio architecture interiors landscape urban community  
sydney melbourne uk  
Level 5, 70 King Street t +61 2 9291 7077 w [fjmtstudio.com](http://fjmtstudio.com)

**fjmt**

project  
**Fort Street Public School**  
Observatory Hill  
Sydney NSW 2000

title  
**Demolition Plans**  
**Demolition Plan - Level 1**

scale	1:200 @ A1	first issued	23/9/19
project code	sheet no.	revision	
<b>FSS</b>	<b>DA-2102</b>	<b>SSDA03</b>	

02510m

GENERAL NOTES

ALL DIMENSIONS AND EXISTING CONDITIONS SHALL BE CHECKED AND VERIFIED BY THE CONTRACTOR BEFORE PROCEEDING WITH THE WORK.

ALL LEVELS RELATIVE TO 'AUSTRALIAN HEIGHT DATUM'.

DO NOT SCALE DRAWINGS.

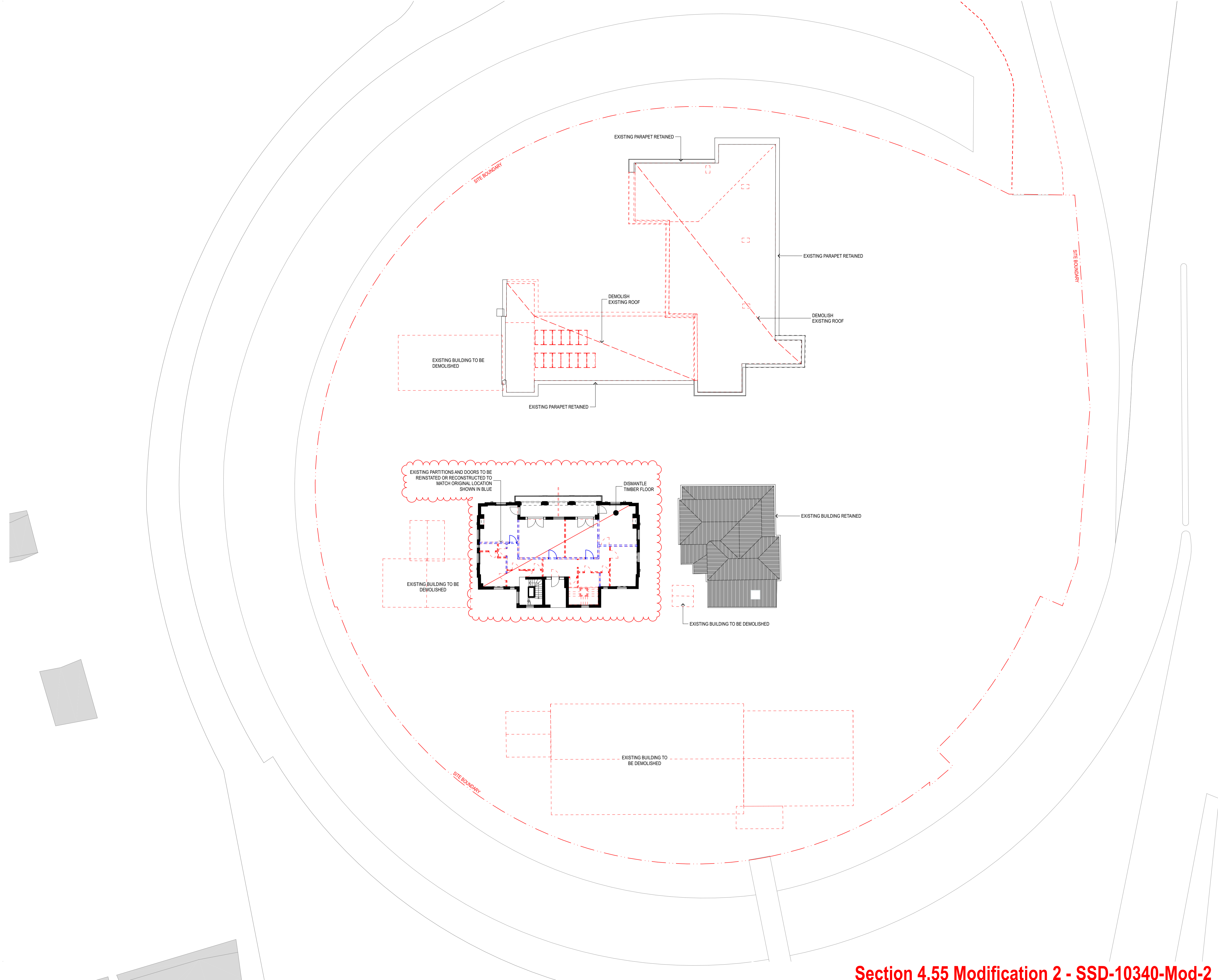
USE FIGURED DIMENSIONS ONLY.

legend

DEMOLITION

\*

WINDOW REMOVED AND WALL UNDERNEATH DEMOLISHED TO FLOOR LEVEL



Section 4.55 Modification 2 - SSD-10340-Mod-2

SSDA03	2/9/22	S455 Modification 2	AWY	
SSDA02	28/1/21	S455 Modification	AWY	
SSDA01	18/12/19	State Significance Development Application	CTK	
rev	date	name	by	chk

first studio architecture interiors landscape urban community

sydney melbourne uk

Level 5, 70 King Street t +61 2 9291 7077 w firststudio.com

fjmt

project

Fort Street Public School

Observatory Hill

Sydney NSW 2000

title

Demolition Plans

Demolition Plan - Level 2

scale

1:200 @ A1

first issued

23/9/19

project code

FSS

sheet no.

revision

DA-2103

SSDA03

02510m

GENERAL NOTES

ALL DIMENSIONS AND EXISTING CONDITIONS

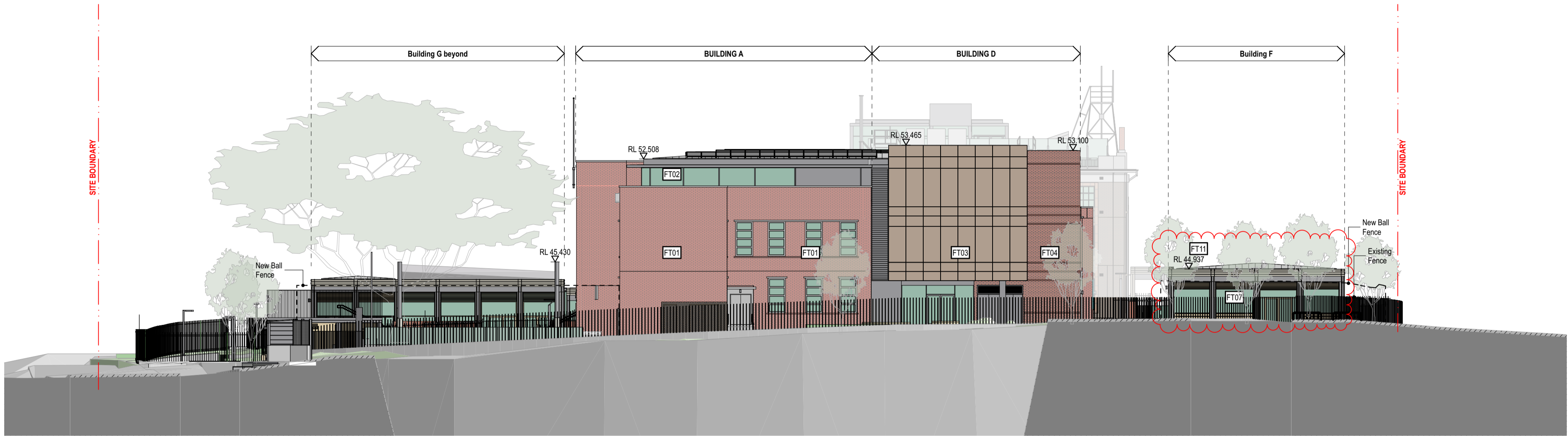
◦ SHALL BE CHECKED AND VERIFIED BY THE CONTRACTOR BEFORE PROCEEDING WITH THE WORK.

◦ ALL LEVELS RELATIVE TO 'AUSTRALIAN HEIGHT DATUM'.

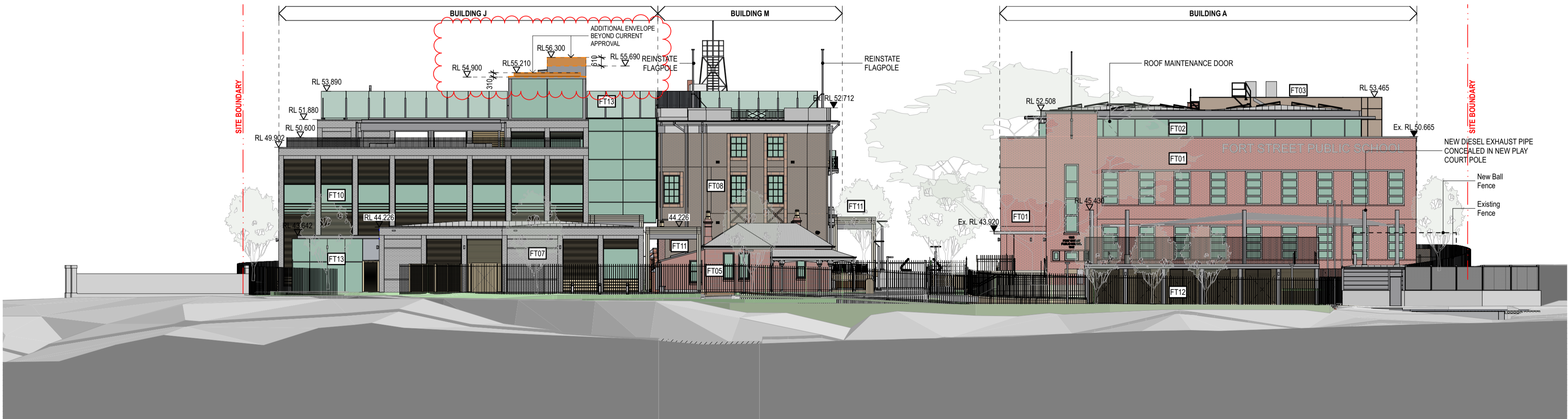
◦ DO NOT SCALE DRAWINGS.

◦ USE FIGURED DIMENSIONS ONLY.

legend



1 ELEVATION NORTH  
1:200



2 ELEVATION EAST  
1:200

SSDA03	2/9/22	S455 Modification 2	AWY	
SSDA02	29/5/20	S455 Modification	AWY	
rev	date	name	by	chk

fjmt studio architecture interiors landscape urban community  
sydney melbourne uk  
Level 5, 70 King Street t +61 2 9291 7077 w fjmtstudio.com

fjmt

project

Fort Street Public School  
Observatory Hill  
Sydney NSW 2000

title

3000 1:200 Elevations  
Elevations North East

scale

1:200 @ A1

first issued

30/9/19

project code

FSS

sheet no.

DA-3001

revision

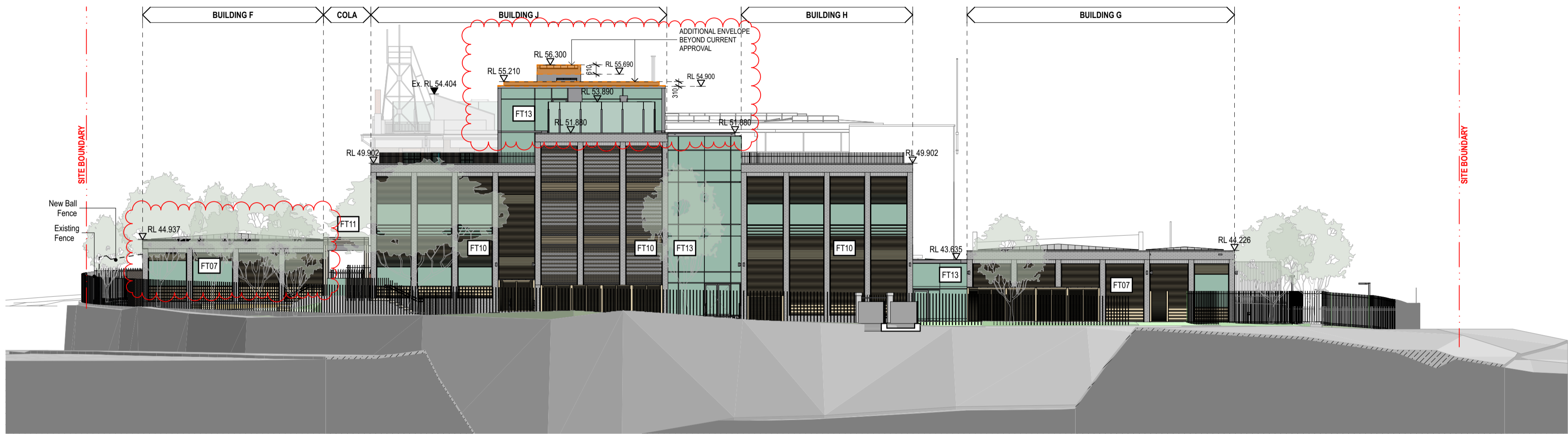
SSDA03

02510m

GENERAL NOTES

ALL DIMENSIONS AND EXISTING CONDITIONS SHALL BE CHECKED AND VERIFIED BY THE CONTRACTOR BEFORE PROCEEDING WITH THE WORK.  
ALL LEVELS RELATIVE TO 'AUSTRALIAN HEIGHT DATUM'.  
DO NOT SCALE DRAWINGS.  
USE FIGURED DIMENSIONS ONLY.

legend



1 ELEVATION SOUTH  
1:200



2 ELEVATION WEST  
1:200

SSDA03	2/9/22	S455 Modification 2	AWY	
SSDA02	29/5/20	S455 Modification	AWY	
rev	date	name	by	chk

fjmt studio architecture interiors landscape urban community  
sydney melbourne uk  
Level 5, 70 King Street t +61 2 9291 7077 w [fjmtstudio.com](#)

fjmt

project  
Fort Street Public School  
Observatory Hill  
Sydney NSW 2000

title  
3000 1:200 Elevations  
Elevations South West

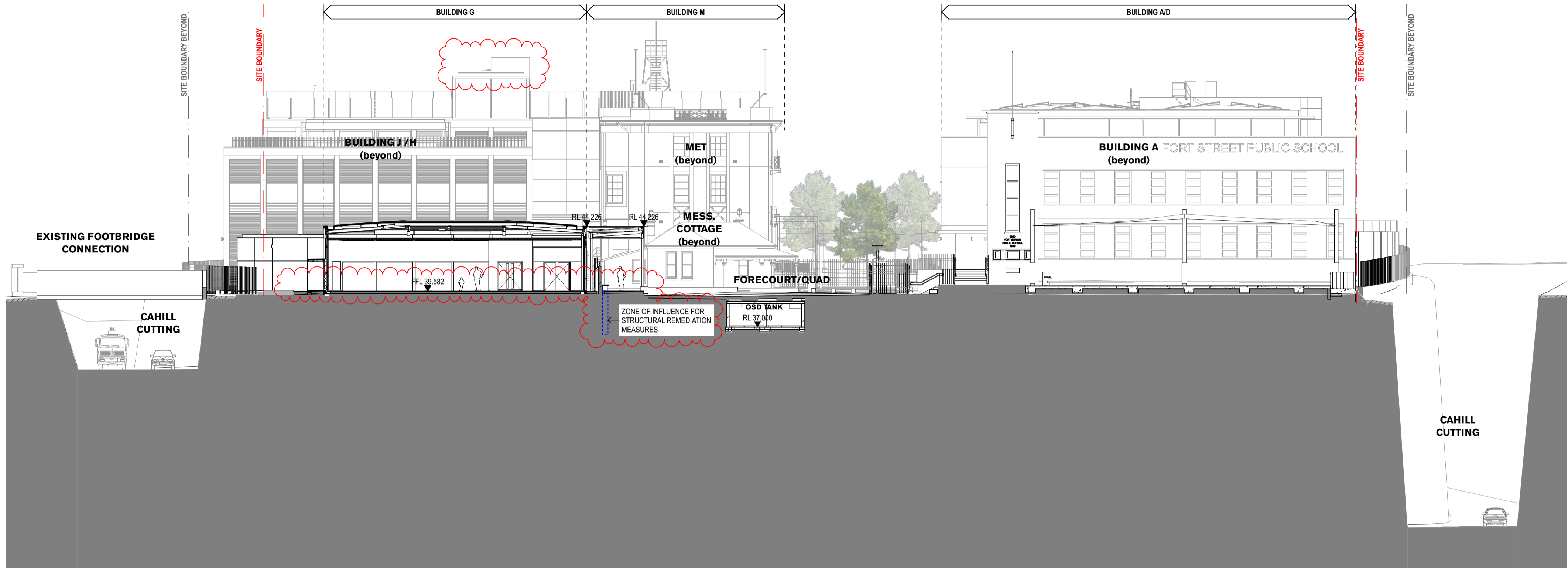
scale 1:200 @ A1 first issued 30/9/19  
project code sheet no. revision  
FSS DA-3002 SSDA03

02510m

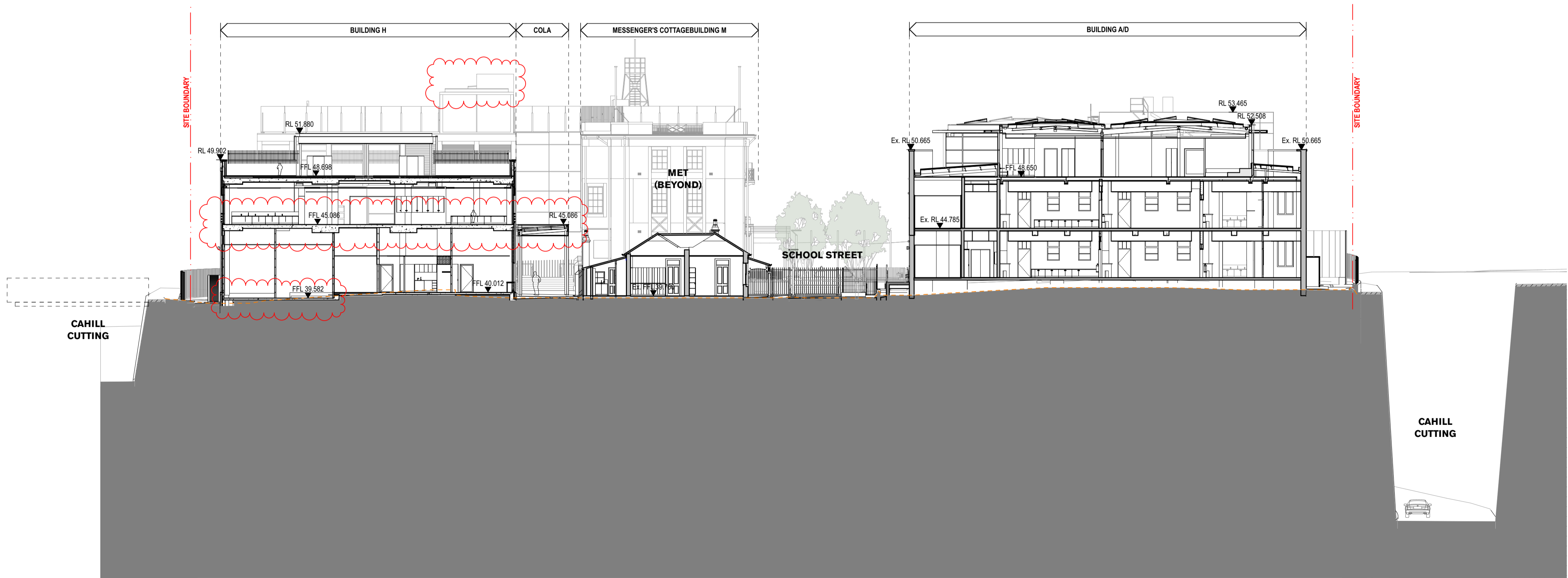
GENERAL NOTES

- ALL DIMENSIONS AND EXISTING CONDITIONS SHALL BE CHECKED AND VERIFIED BY THE CONTRACTOR BEFORE PROCEEDING WITH THE WORK.
- ALL LEVELS RELATIVE TO 'AUSTRALIAN HEIGHT DATUM'.
- DO NOT SCALE DRAWINGS.
- USE FIGURED DIMENSIONS ONLY.

legend



1 SECTION Section At Bldg A  
1:200



2 SECTION Section At Cottage  
1:200

SSDA03	2/9/22	S455 Modification 2	AWY	
SSDA02	29/5/20	S455 Modification	AWY	
rev	date	name	by	chk

fjmt studio architecture interiors landscape urban community  
sydney melbourne uk  
Level 5, 70 King Street t +61 2 9291 7077 w fjmtstudio.com



project  
**Fort Street Public School**  
Observatory Hill  
Sydney NSW 2000

title  
**4000 1:200 Sections**  
**Sections 1**

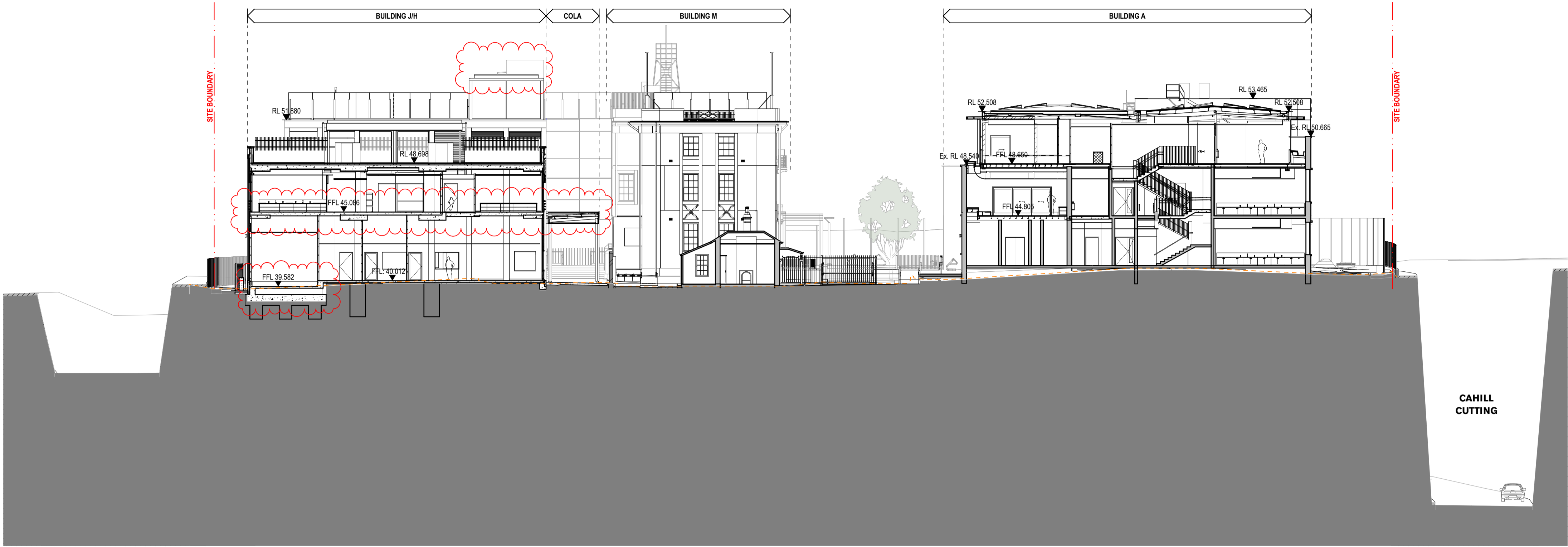
scale	1:200 @ A1	first issued	30/9/19
project code	sheet no.	revision	
FSS	DA-4001	SSDA03	

02510m

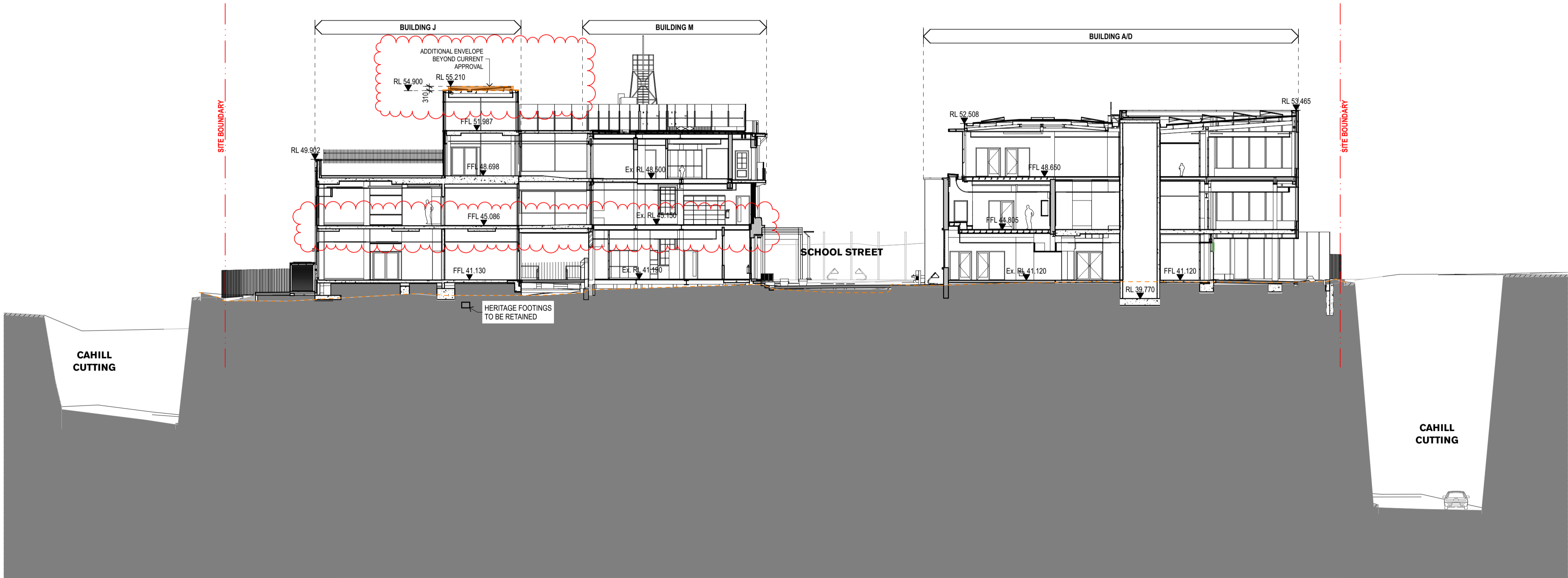
GENERAL NOTES

ALL DIMENSIONS AND EXISTING CONDITIONS  
◦ SHALL BE CHECKED AND VERIFIED BY THE CONTRACTOR BEFORE PROCEEDING WITH THE WORK.  
◦ ALL LEVELS RELATIVE TO 'AUSTRALIAN HEIGHT DATUM'.  
◦ DO NOT SCALE DRAWINGS.  
◦ USE FIGURED DIMENSIONS ONLY.

legend



1 SECTION Section At COLA  
1:200



2 SECTION Section At MET  
1:200

SSDA03	2/9/22	S455 Modification 2	AWY	
SSDA02	29/5/20	S455 Modification	AWY	
rev	date	name	by	chk

fjmt studio architecture interiors landscape urban community  
sydney melbourne uk  
Level 5, 70 King Street t +61 2 9291 7077 w fjmtstudio.com



project  
**Fort Street Public School**  
Observatory Hill  
Sydney NSW 2000

title  
**4000 1:200 Sections**  
**Sections 2**

scale	1:200 @ A1	first issued	30/9/19
project code	sheet no.	revision	
FSS	DA-4002	SSDA03	

02510m

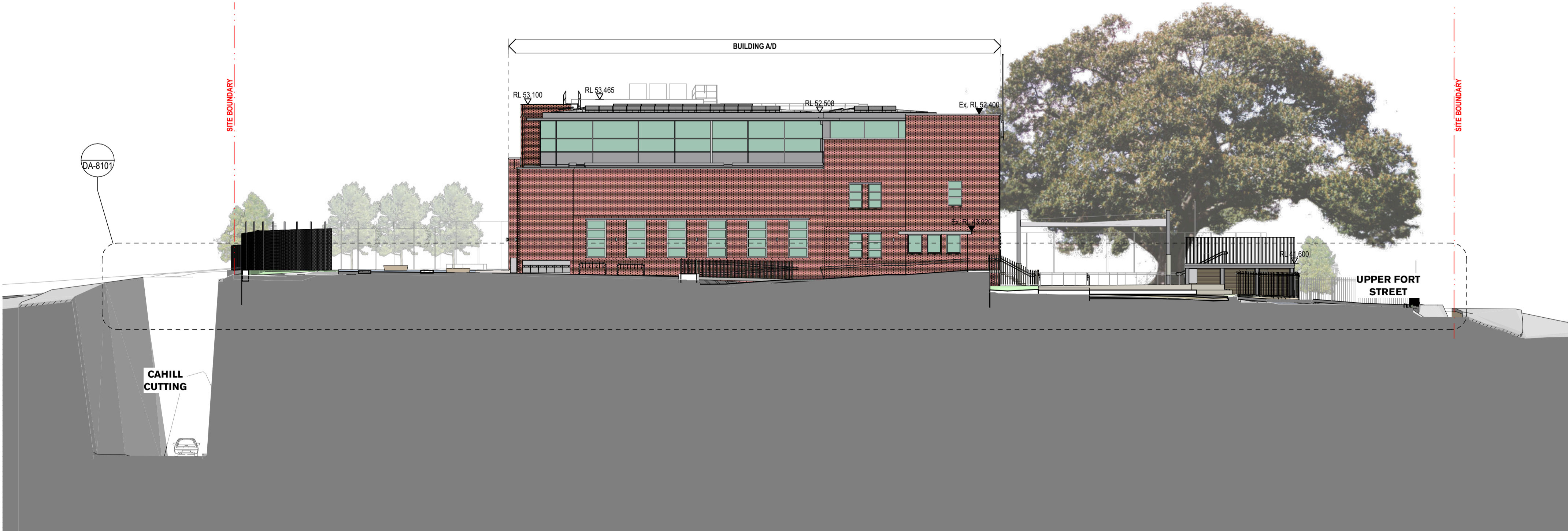
GENERAL NOTES

ALL DIMENSIONS AND EXISTING CONDITIONS SHALL BE CHECKED AND VERIFIED BY THE CONTRACTOR BEFORE PROCEEDING WITH THE WORK.  
ALL LEVELS RELATIVE TO 'AUSTRALIAN HEIGHT DATUM'.  
DO NOT SCALE DRAWINGS.  
USE FIGURED DIMENSIONS ONLY.

legend



1 SECTION Section At Main Street S  
1:200



2 SECTION Section At Main Street N  
1:200

SSDA03	2/9/22	S455 Modification 2	AWY
SSDA02	29/5/20	S455 Modification	AWY

rev	date	name	by	chk
-----	------	------	----	-----

fjmt studio architecture interiors landscape urban community  
sydney melbourne uk  
Level 5, 70 King Street t +61 2 9291 7077 w fjmtstudio.com



project  
**Fort Street Public School**  
Observatory Hill  
Sydney NSW 2000

title  
**4000 1:200 Sections**  
**Sections 3**

scale	1:200 @ A1	first issued	30/9/19
-------	------------	--------------	---------

project code	sheet no.	revision
FSS	DA-4003	SSDA03

Section 4.55 Modification 2 - SSD-10340-Mod-2

02510m

GENERAL NOTES

ALL DIMENSIONS AND EXISTING CONDITIONS

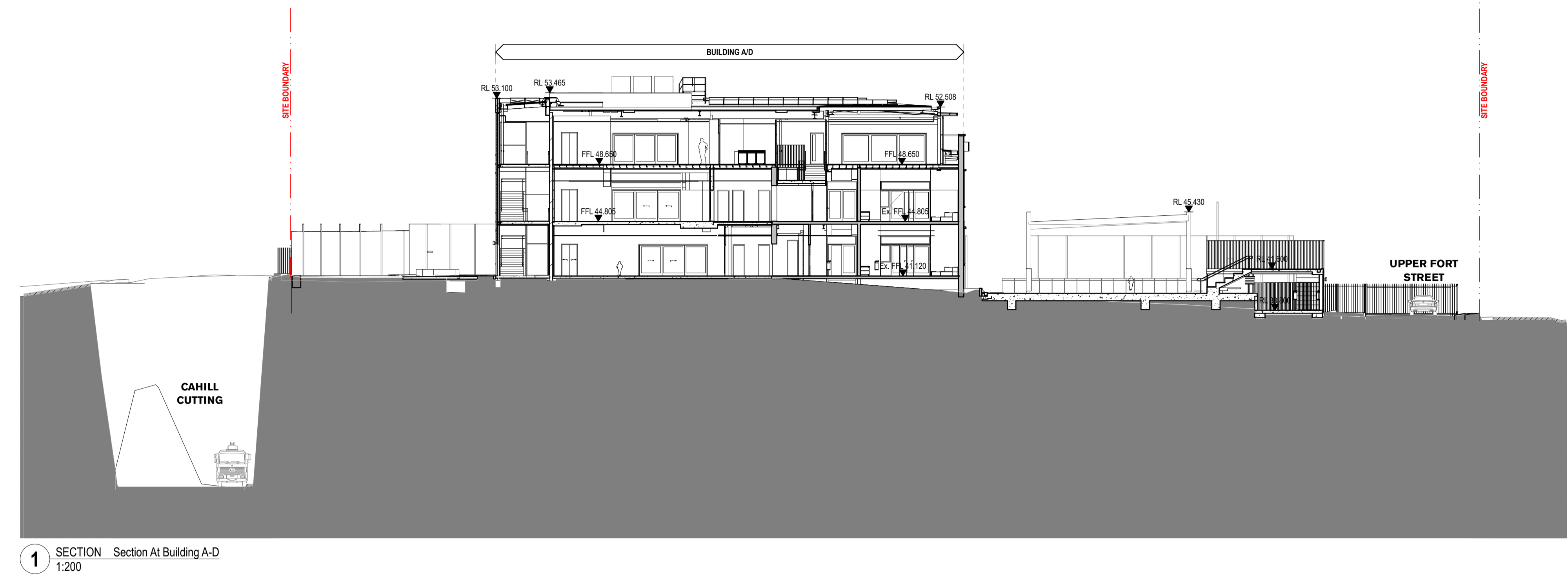
◦ SHALL BE CHECKED AND VERIFIED BY THE CONTRACTOR BEFORE PROCEEDING WITH THE WORK.

◦ ALL LEVELS RELATIVE TO 'AUSTRALIAN HEIGHT DATUM'.

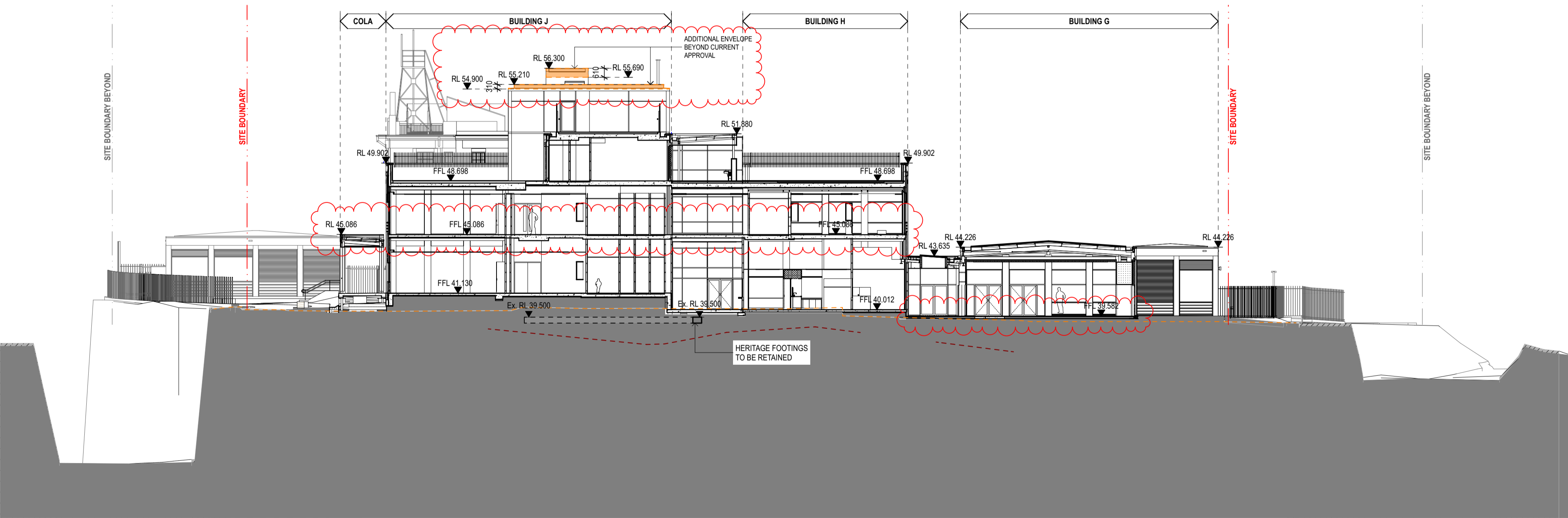
◦ DO NOT SCALE DRAWINGS.

◦ USE FIGURED DIMENSIONS ONLY.

legend



1 SECTION Section At Building A-D  
1:200



2 SECTION Section At Buildings G-J  
1:200

SSDA03	2/9/22	S455 Modification 2	AWY	
SSDA02	29/5/20	S455 Modification	AWY	
rev	date	name	by	chk

fjmt studio architecture interiors landscape urban community

sydney melbourne uk

Level 5, 70 King Street t +61 2 9291 7077 w [fjmtstudio.com](#)

fjmt

project

**Fort Street Public School**  
Observatory Hill  
Sydney NSW 2000

title

**4000 1:200 Sections**  
**Sections 4**

scale

1:200 @ A1

first issued

30/9/19

project code

sheet no.

revision

FSS

DA-4004

SSDA03