

BULK EARTHWORKS LEGEND

- SITE BOUNDARY LINE
- PROPOSED BOUNDARY ADJUSTMENT
- ADJACENT BOUNDARY LINE
- BUILDING LINE
- BULK EARTHWORKS PAD LEVEL
- BATTERS (MAX. 1:3)
- EXISTING CONTOURS
- BULK EARTHWORKS CONTOURS

DEPTH OF CUT

	GREATER THAN -2.0m
	-2.0m TO -1.5m
	-1.5m TO -1.25m
	-1.25m TO -1.0m
	-1.0m TO -0.75m
	-0.75m TO -0.5m
	-0.5m TO -0.25m
	-0.25m TO -0.0m

DEPTH OF FILL

	0.0m TO 0.25m
	0.25m TO 0.5m
	0.5m TO 0.75m
	0.75m TO 1.0m
	1.0m TO 1.25m
	1.25m TO 1.5m
	1.5m TO 2.0m
	GREATER THAN 2.0m

- ### GENERAL NOTES:
- ALL WORKS TO BE CARRIED OUT IN ACCORDANCE WITH COUNCIL / RELEVANT AUTHORITY SPECIFICATIONS AND DETAILS.
 - CAD FILES / DTM FILES TO BE SUPPLIED IN AUTOCAD FORMAT FOR SETOUT PURPOSES (UPON REQUEST).
 - STRIP EXISTING TOPSOIL IN CONSULTATION WITH THE GEOTECHNICAL ENGINEER / REPORT. FOR THE PURPOSES OF EARTHWORKS CALCULATIONS A TOPSOIL STRIPPING DEPTH OF 150mm HAS BEEN ASSUMED. TO BE CONFIRMED WITH GEOTECHNICAL REPORT.
 - NO ALLOWANCE HAS BEEN MADE FOR BULKING FACTORS. NOTE ALL VOLUMES DEPICTED ARE SOLID VOLUMES ONLY AND MAY NOT REFLECT DETAILED EARTHWORKS.
 - NO ALLOWANCE HAS BEEN MADE FOR DETAILED EARTHWORKS, ie SERVICE TRENCHING, DETAILED EXCAVATION, FOOTINGS, RETAINING WALLS AND THE LIKE. THE CONTRACTOR SHALL USE FINAL SURFACE LEVELS AND TYPICAL PAVEMENT DETAILS FOR ACTUAL EARTHWORKS LEVELS.
 - BULK EARTHWORKS ARE BASED ON THE FOLLOWING DEPTHS FROM FINISHED SURFACE LEVELS:
 - BUILDING SLAB ON GROUND 220mm
 - MODULAR BUILDING SLAB 500mm, 800mm
 - FLEXIBLE PAVEMENT 520mm
 - MULCH AREA 225mm
 - TURF AREA 225mm
 - MASS PLANTING AREA 375mm
 - SPORTS COURT 200mm
 - FOOTPATH 150mm
 - DRY CREEK BED 250mm
 - APPROXIMATE BULK EARTHWORK VALUES AS FOLLOWS:
 - CUT -13,666 cu.m
 - FILL 6,553 cu.m
 - BALANCE -7,112 cu.m (EXPORT)
 NOTE: SITE STRIPPING VOLUMES HAVE NOT BEEN INCLUDED IN ABOVE CALCULATIONS.
 - STRIPPING VOLUME: 4,216 cu.m
 - IT HAS BEEN ASSUMED THAT 150mm OF TOPSOIL WILL BE REUSED IN THE LANDSCAPED AREAS.

NOT FOR CONSTRUCTION

REV	BY	DATE	DESCRIPTION
01	MM	30.04.21	ISSUED FOR DRAFT SCHEMATIC DESIGN
02	MM	14.05.21	ISSUED FOR DRAFT SSDA
03	MM	24.05.21	ISSUED FOR SSDA
04	MM	20.09.21	ISSUED FOR SSDA
05	MM	22.09.21	ISSUED FOR SSDA
06	EE	07.09.22	ISSUED FOR SSD MODIFICATION

NORTHROP
Sydney
Level 11 345 George Street, Sydney NSW 2000
Ph (02) 9241 4188 Fax (02) 9241 4324
Email sydney@northrop.com.au ABN 81 094 433 100

HANSEN YUNCKEN
NSW Education

PEDAVOLI ARCHITECTS PTY LTD
LEVEL 2
458-468 WATTLE STREET
ULTIMO NSW 2007 AUSTRALIA
TEL: +61 2 9291 0000
WEB: www.ppa.com.au

DRAWING NAME
BULK EARTHWORKS CUT & FILL PLAN

PROJECT
NEW PRIMARY SCHOOL IN GOOGONG
GORMAN DRIVE, GOOGONG

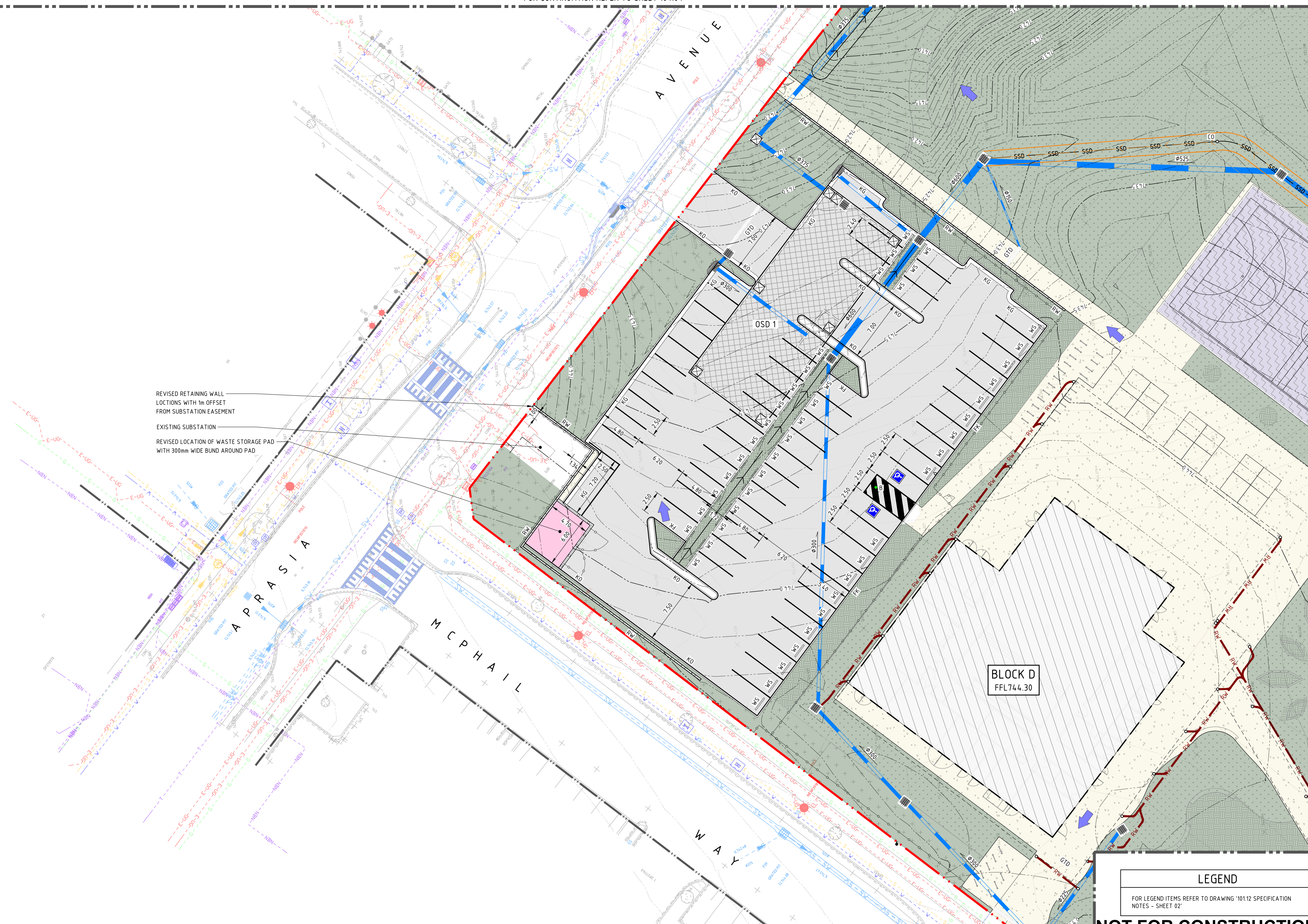
PROJECT NORTH

SCALE 1:500 @ A1

MM	AC	22.09.21	REVISION
DRAWN	CHECKED	VERIFIED	DATE

GOOG-CV-SD-DWG-103.01

06



FOR CONTINUATION REFER TO SHEET 104.03

LEGEND

FOR LEGEND ITEMS REFER TO DRAWING '101.12 SPECIFICATION NOTES - SHEET 02'

NOT FOR CONSTRUCTION

REV	BY	DATE	DESCRIPTION
01	MM	30.04.21	ISSUED FOR DRAFT SCHEMATIC DESIGN
02	MM	04.05.21	ISSUED FOR DRAFT SCHEMATIC DESIGN
03	MM	14.05.21	ISSUED FOR DRAFT SSDA
04	MM	17.05.21	ISSUED FOR DRAFT SSDA
05	MM	24.05.21	ISSUED FOR SSDA
06	MM	20.09.21	ISSUED FOR SSDA
07	MM	22.09.21	ISSUED FOR SSDA
08	EE	07.09.22	ISSUED FOR SSD MODIFICATION

NORTHROP

Sydney
Level 11 345 George Street, Sydney NSW 2000
Ph (02) 9244 4188 Fax (02) 9241 4324
Email sydney@northrop.com.au ABN 81 094 433 100

ALL DIMENSIONS TO BE VERIFIED ON SITE BEFORE COMMENCING WORK.
NORTHROP ACCEPTS NO RESPONSIBILITY FOR THE USABILITY, COMPLETENESS OR SCALE OF DRAWINGS TRANSFERRED ELECTRONICALLY.
THIS DRAWING MAY HAVE BEEN PREPARED USING COLOUR, AND MAY BE INCOMPLETE IF COPIED TO BLACK & WHITE.

HANSEN YUNCKEN

NSW GOVERNMENT Education

PEDAVOLI ARCHITECTS PTY LTD
LEVEL 2
458-468 WATTLE STREET
ULTIMO NSW 2007 AUSTRALIA
TEL: +61 2 9291 0000
WEB: www.ppa.com.au

NOMINATED ARCHITECT:
VINCE PEDAVOLI
NSW REG. NO. 5045

DRAWING NAME
**SITWORKS & STORMWATER
MANAGEMENT PLAN - SHEET 02**

PROJECT
**NEW PRIMARY SCHOOL IN
GOOGONG**
GORMAN DRIVE, GOOGONG

PROJECT NORTH

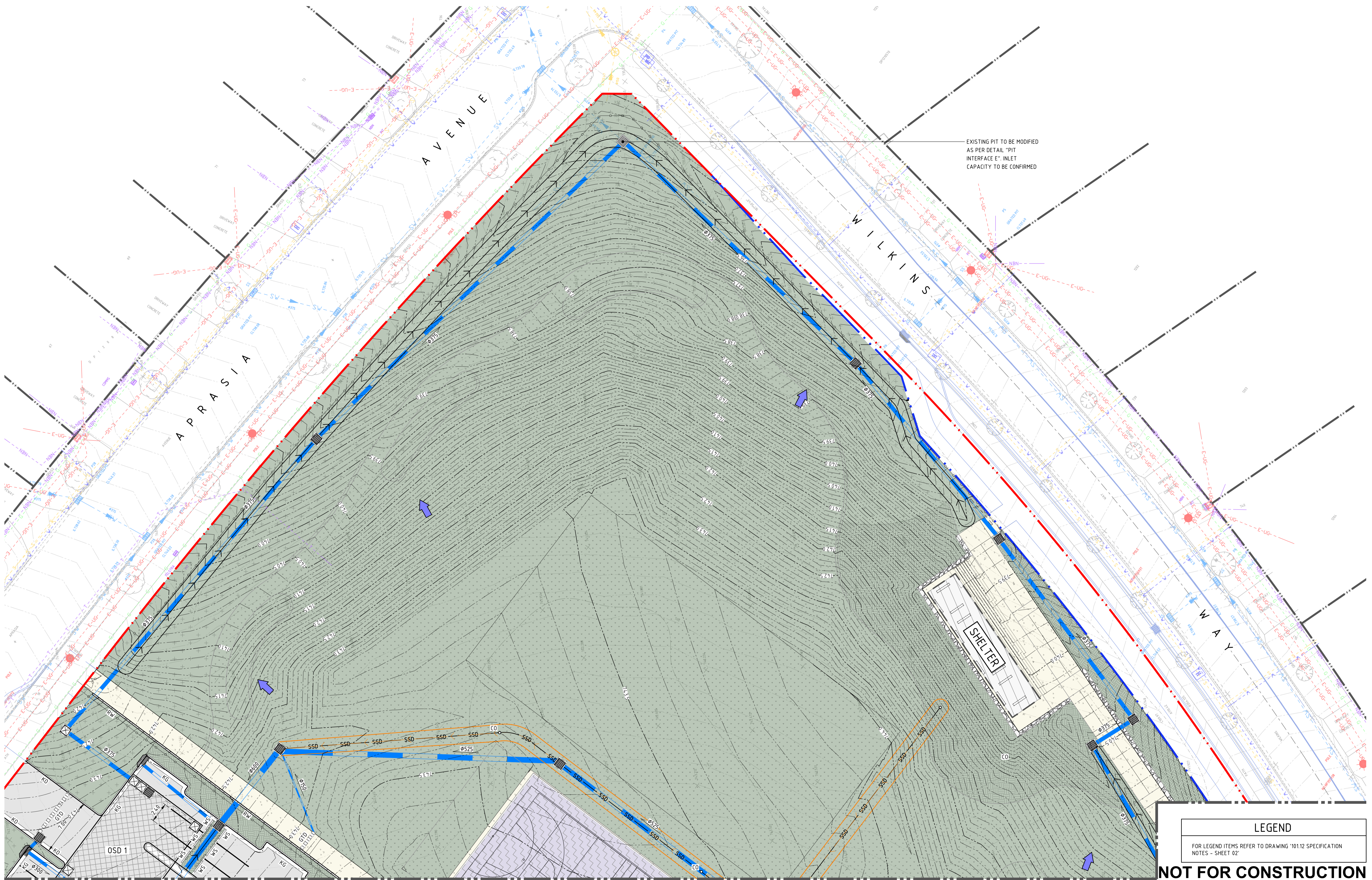
SCALE 1:200@A1

0 2 4 6 8 10m

MM	AC	22.09.21	REVISION
DRAWN	CHECKED	VERIFIED	DATE

GOOG-CV-SD-DWG-104.02

08



EXISTING PIT TO BE MODIFIED
AS PER DETAIL "PIT
INTERFACE E". INLET
CAPACITY TO BE CONFIRMED

LEGEND	
FOR LEGEND ITEMS REFER TO DRAWING '101.12 SPECIFICATION NOTES - SHEET 02'	

NOT FOR CONSTRUCTION

FOR CONTINUATION REFER TO SHEET 104.02

FOR CONTINUATION REFER TO SHEET 104.03

REV	BY	DATE	DESCRIPTION
01	MM	30.04.21	ISSUED FOR DRAFT SCHEMATIC DESIGN
02	MM	04.05.21	ISSUED FOR DRAFT SCHEMATIC DESIGN
03	MM	14.05.21	ISSUED FOR DRAFT SSDA
04	MM	24.05.21	ISSUED FOR SSDA
05	MM	20.09.21	ISSUED FOR SSDA
06	MM	22.09.21	ISSUED FOR SSDA
07	AC	29.08.22	ISSUED FOR COORDINATION
08	EE	07.09.22	ISSUED FOR SSD MODIFICATION

NORTHROP
Sydney
Level 11 345 George Street, Sydney NSW 2000
Ph (02) 9241 4188 Fax (02) 9241 4324
Email sydney@northrop.com.au ABN 81 094 433 100

HANSEN YUNCKEN
NSW Education

PEDAVOLI ARCHITECTS PTY LTD
LEVEL 2
458-468 WATTLE STREET
ULTIMO NSW 2007 AUSTRALIA
TEL: +61 2 9291 0000
WEB: www.peda.com.au

DRAWING NAME
**SITWORKS & STORMWATER
MANAGEMENT PLAN - SHEET 04**

PROJECT
**NEW PRIMARY SCHOOL IN
GOOGONG**
GORMAN DRIVE, GOOGONG

PROJECT NORTH

SCALE 1:200@A1

0 2 4 6 8 10m

MM	AC	29.08.22	REVISION
DRAWN	CHECKED	VERIFIED	DATE

GOOG-CV-SD-DWG-104.04

08