

# NEW PRIMARY SCHOOL IN GOOGONG

## DRAWING LIST

ARCHITECTURAL

DRAWING NUMBER	DRAWING NAME	Current Revision
GOOG - SSDA - 000	COVER SHEET, DRAWING LIST AND LOCATION PLAN	D
GOOG - SSDA - 001	SITE PLAN	D
GOOG - SSDA - 002	SITE ANALYSIS PLAN	D
GOOG - SSDA - 005	FENCING PLAN AND DETAILS	D
GOOG - SSDA - 011	COMPOSITE PLAN - GROUND FLOOR	D
GOOG - SSDA - 012	COMPOSITE PLAN - FIRST FLOOR	D
GOOG - SSDA - 021	COMPOSITE PLAN - ROOF PLAN	D
GOOG - SSDA - 101	ELEVATIONS - SHEET 1	D
GOOG - SSDA - 102	ELEVATIONS - SHEET 2	D
GOOG - SSDA - 201	SECTIONS - SHEET 1	D
GOOG - SSDA - 301	SHADOW STUDIES - 21 JUNE 9AM	D
GOOG - SSDA - 302	SHADOW STUDIES - 21 JUNE 12PM	D
GOOG - SSDA - 303	SHADOW STUDIES - 21 JUNE 3PM	D
GOOG - SSDA - 401	RENDERS AND MATERIAL BOARD	D
GOOG - SSDA - 501	GFA PLANS AND AREA CALCULATION	D
GOOG - SSDA - 511	HEIGHT PLANE DIAGRAM	D



LOCATION PLAN N.T.S (Google Earth Image - April 2021)  
SITE AREA: 28118.39m<sup>2</sup>



PERSPECTIVE VIEW: MAIN ENTRANCE - GORMAN DRIVE

9/06/2021 11:39:26 AM

AMENDMENTS		DATE	DESCRIPTION
REV	BY		
A	JK	23/04/2021	DRAFT SSDA ISSUE
B	JK	17/05/2021	DRAFT T.O.A
C	PA	26/05/2021	ISSUED FOR SSDA
D	PA	09/06/2021	ISSUED FOR SSDA LODGEMENT

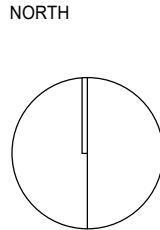
**HANSEN YUNCKEN**

PEDAVOLI ARCHITECTS PTY LTD  
LEVEL 2  
458-468 WATTLE STREET  
ULTIMO NSW 2007 AUSTRALIA  
TEL: +61 2 9291 0000  
WEB: www.pp-a.com.au  
NOMINATED ARCHITECT:  
VINCE PEDAVOLI  
NSW REG. No. 5045

**PEDAVOLI**  
ARCHITECTS

DRAWING NAME  
**COVER SHEET, DRAWING LIST AND  
LOCATION PLAN**

PROJECT  
**NEW PRIMARY SCHOOL IN GOOGONG**  
**GORMAN DRIVE, GOOGONG**



SCALE NTS			
09 JUNE 2021			
PROJECT	PHASE	SERIES NUMBER	REVISION
GOOG - SSDA - 000			D



SITE PLANNING

- 1. Waste Pad
- 2. Main Switchboard Room
- 3. Substation
- 4. Existing Substation
- 5. Pumps / Meters
- 6. Shade Structure
- 7. Plant with Screen
- 8. Bicycle Parking (60 parking spots)
- 9. Play Space
- 10. Main School Sign
- 11. Electronic School Sign
- 12. Proposed Secondary Entrance
- 13. S.E.L.U Play Space

\*Refer to 005 for the fence details drawing



9/06/2021 12:52:59 PM

AMENDMENTS				DESCRIPTION
REV	BY	DATE	ISSUED FOR	
A	JK	06/05/2021	DRAFT SSDA	
B	JK	17/05/2021	DRAFT T.O.A	
C	PA	26/05/2021	ISSUED FOR SSDA	
D	PA	09/06/2021	ISSUED FOR SSDA LODGEMENT	

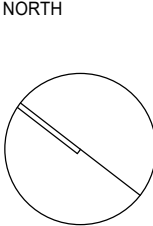


PEDAVOLI ARCHITECTS PTY LTD  
LEVEL 2  
458-468 WATTLE STREET  
ULTIMO NSW 2007 AUSTRALIA  
TEL: +61 2 9291 0000  
WEB: www.pj-a.com.au  
NOMINATED ARCHITECT:  
VINCE PEDAVOLI  
NSW REG. No. 5045



DRAWING NAME  
SITE PLAN

PROJECT  
NEW PRIMARY SCHOOL IN GOOGONG  
GORMAN DRIVE, GOOGONG



5000 10000 15000 20000 25000 50000				SCALE 1 : 500 @ A1
09 JUNE 2021				
PROJECT	PHASE	SERIES NUMBER	REVISION	
GOOG - SSDA - 001			D	



9/06/2021 11:40:50 AM

Legend

Subject Site

Open Recreation

Carparking

Cycle Way

Bus Bay

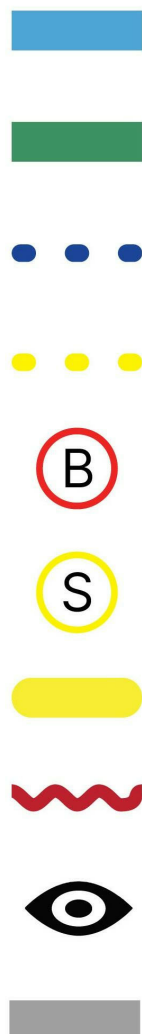
Existing Substation

Surrounding Streets

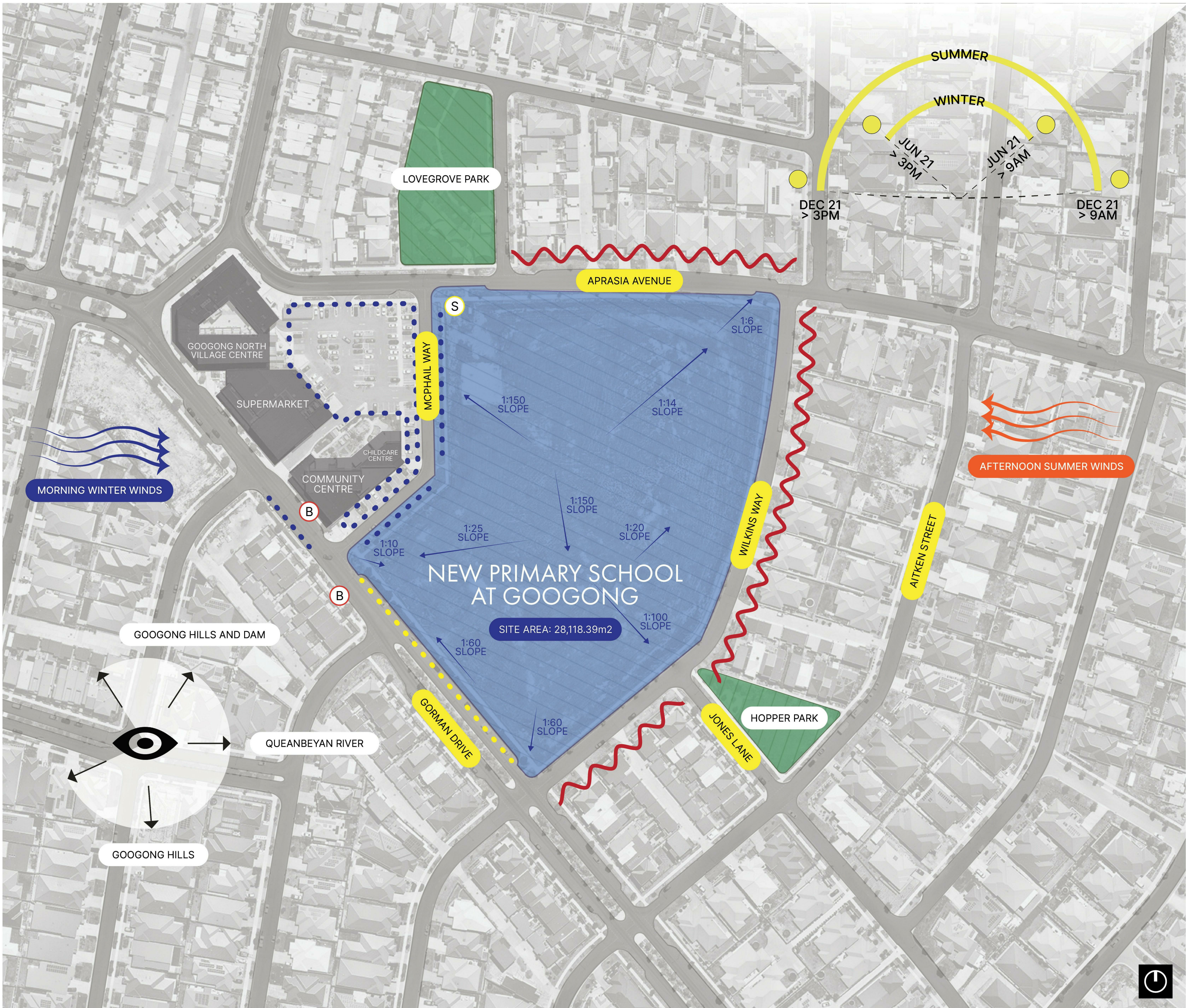
Privacy Concerns (Overlooking/Noise)

Desirable Views

Roads



Note: Entirety of area shown is zoned R1 - Residential.



AMENDMENTS				DESCRIPTION
REV	BY	DATE		
A	JK	06/05/2021	DRAFT SSDA	
B	JK	17/05/2021	DRAFT T.O.A	
C	PA	26/05/2021	ISSUED FOR SSDA	
D	PA	09/06/2021	ISSUED FOR SSDA LODGEMENT	



PEDAVOLI ARCHITECTS PTY LTD  
LEVEL 2  
458-468 WATTLE STREET  
ULTIMO NSW 2007 AUSTRALIA  
TEL: +61 2 9291 0000  
WEB: www.pda.com.au  
NOMINATED ARCHITECT:  
VINCE PEDAVOLI  
NSW REG. No. 5045



SITE ANALYSIS PLAN

NEW PRIMARY SCHOOL IN GOOGONG

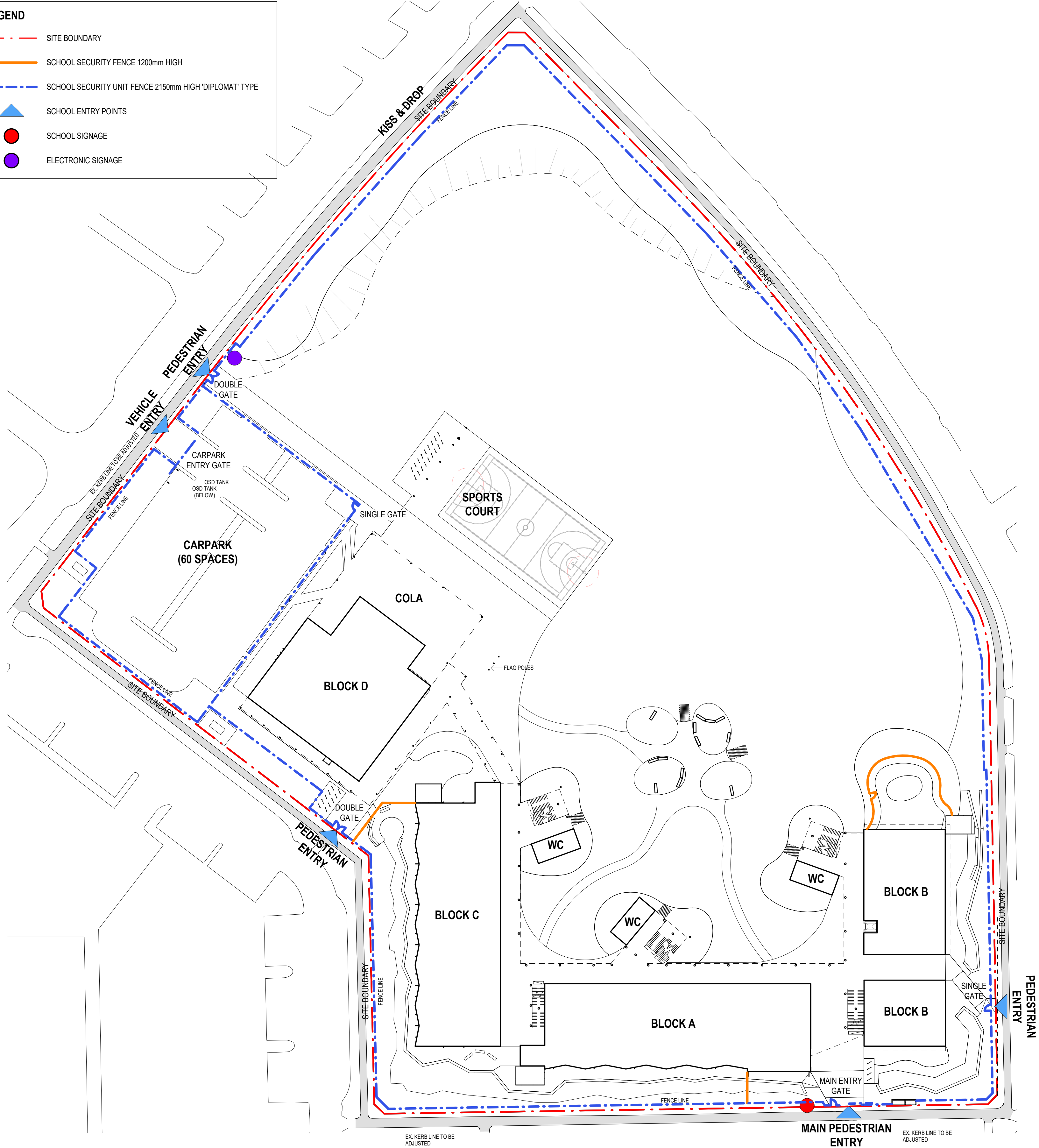
GORMAN DRIVE, GOOGONG

10000 20000 30000 40000 50000 100000				SCALE 1 : 1250 @ A1
				09 JUNE 2021
PROJECT	PHASE	SERIES NUMBER	REVISION	
GOOG - SSDA - 002			D	

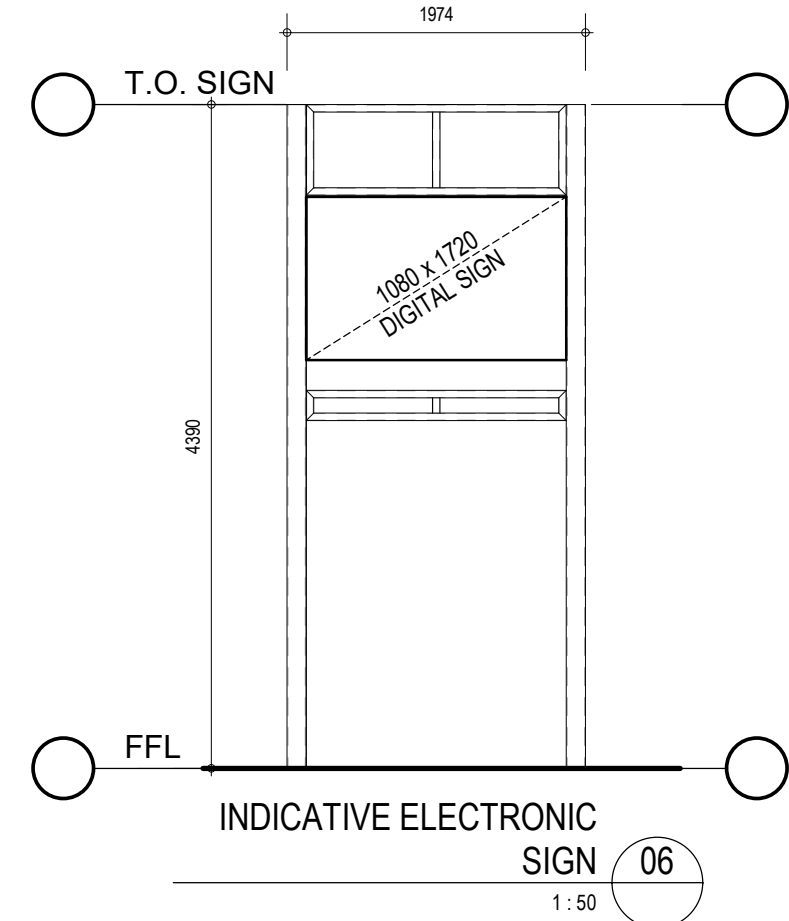
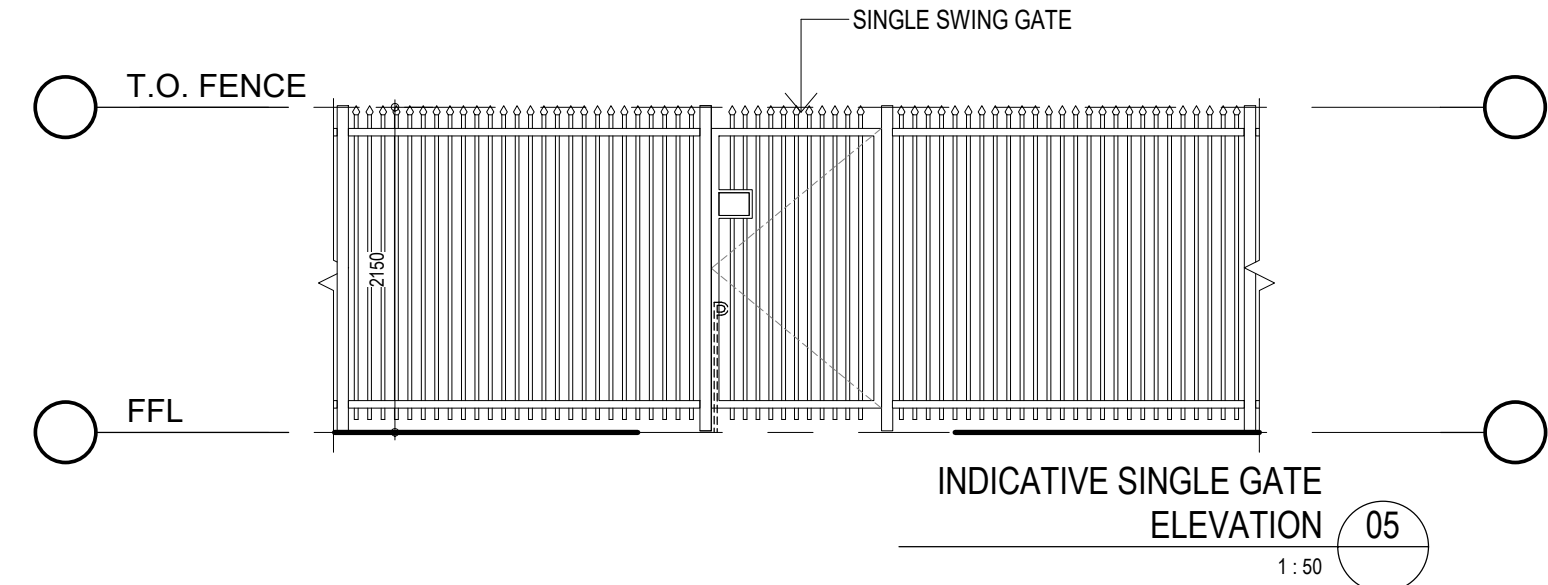
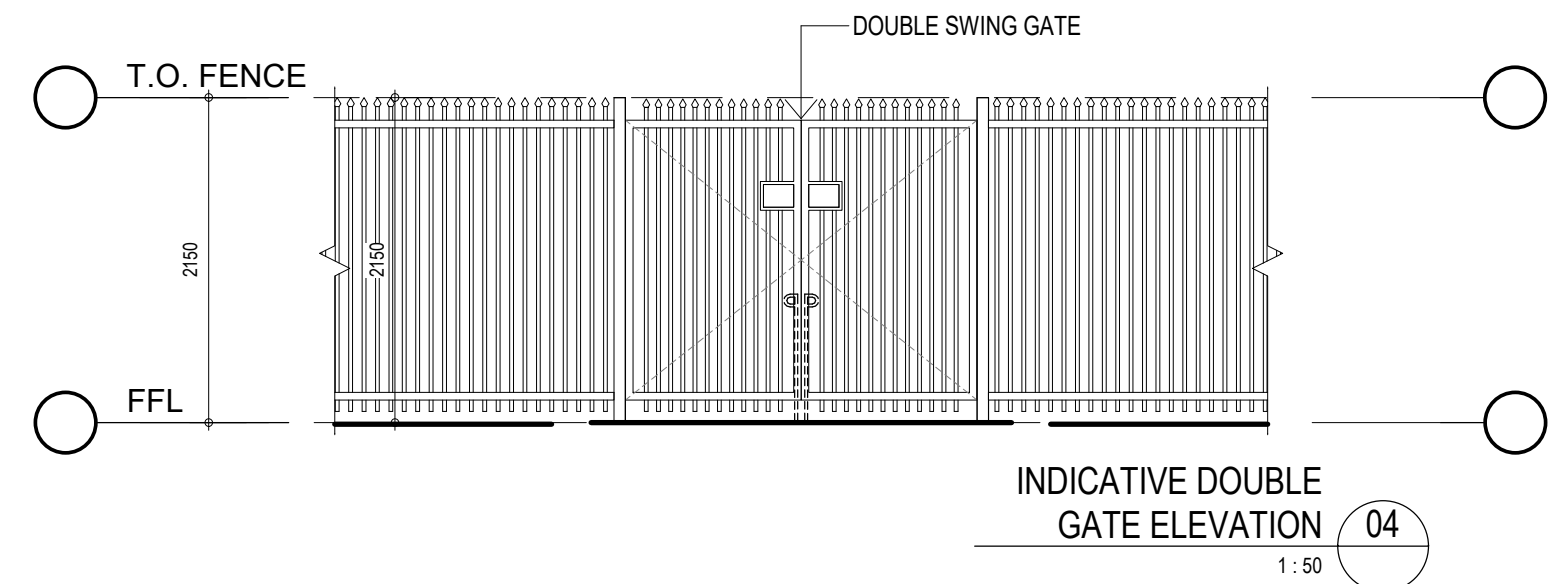
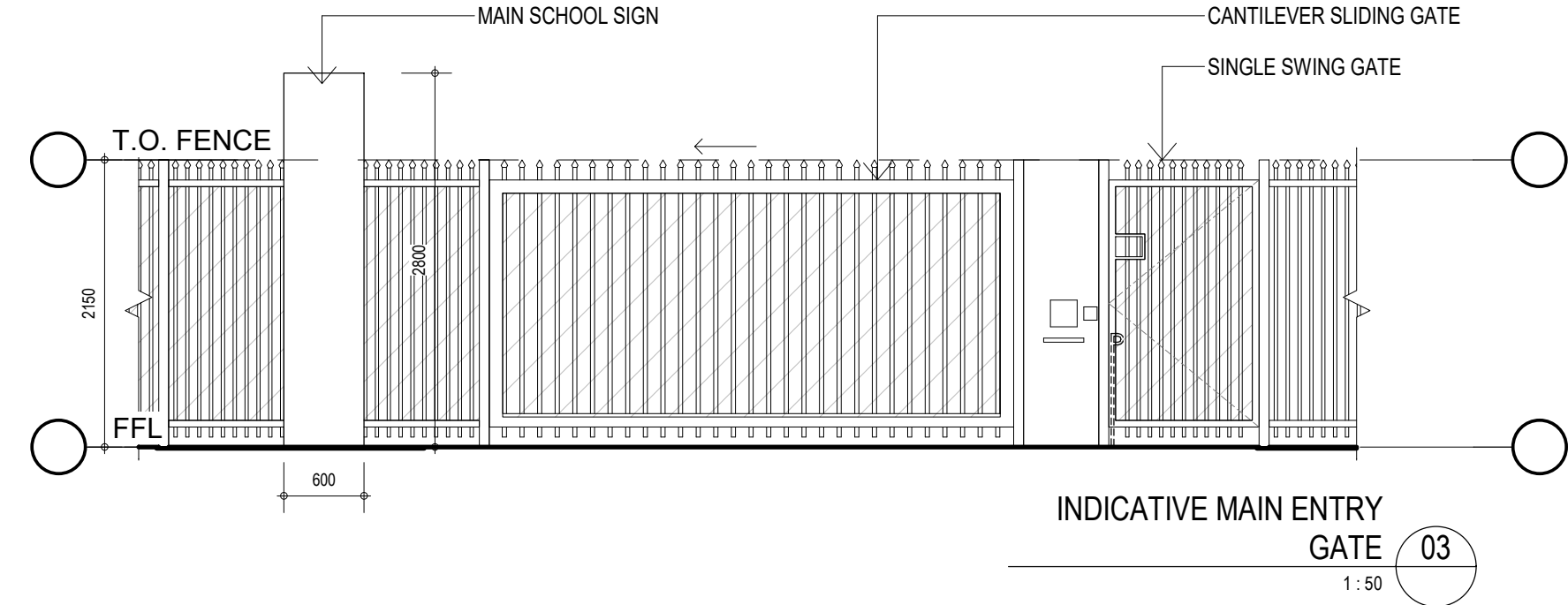
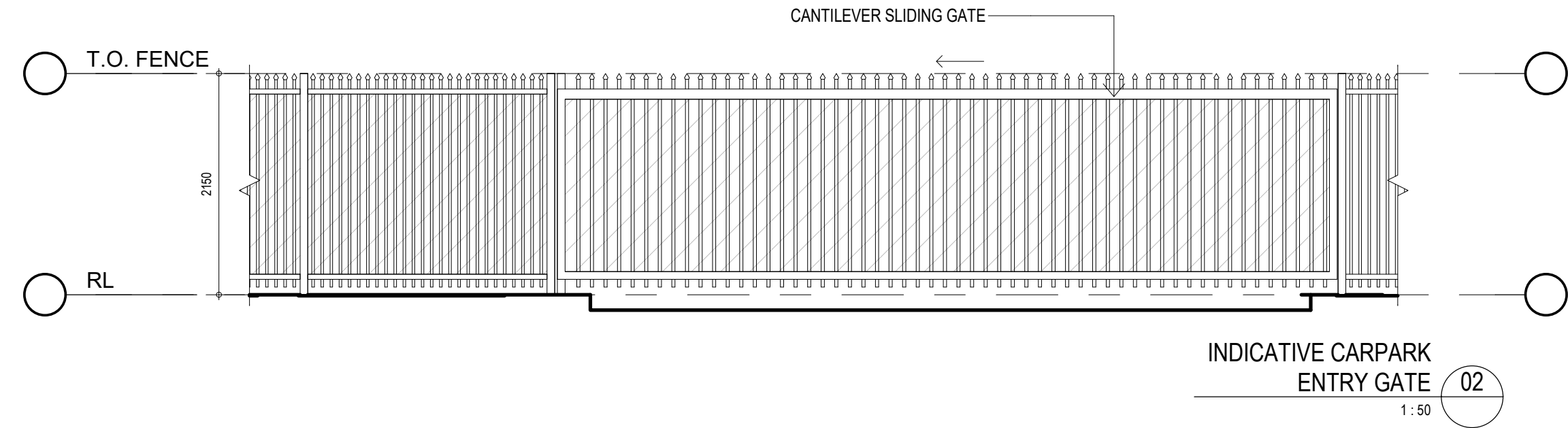


**LEGEND**

- SITE BOUNDARY
- SCHOOL SECURITY FENCE 1200mm HIGH
- SCHOOL SECURITY UNIT FENCE 2150mm HIGH 'DIPLOMAT' TYPE
- SCHOOL ENTRY POINTS
- SCHOOL SIGNAGE
- ELECTRONIC SIGNAGE



OVERALL SITE FENCING PAN 1  
1: 500 80, 401



9/06/2021 11:41:08 AM

AMENDMENTS				
REV	BY	DATE	DRAFT	DESCRIPTION
A	JK	06/05/2021	DRAFT SSDA	
B	JK	17/05/2021	DRAFT T.O.A	
C	PA	26/05/2021	ISSUED FOR SSDA	
D	PA	09/06/2021	ISSUED FOR SSDA LODGEMENT	

**HANSEN YUNCKEN**  
NSW GOVERNMENT Education

PEDAVOLI ARCHITECTS PTY LTD  
LEVEL 2  
458-468 WATTLE STREET  
ULTIMO NSW 2007 AUSTRALIA  
TEL: +61 2 9291 0000  
WEB: www.pp-a.com.au  
NOMINATED ARCHITECT:  
VINCE PEDAVOLI  
NSW REG. No. 5045

**PEDAVOLI ARCHITECTS**

**FENCING PLAN AND DETAILS**

PROJECT

**NEW PRIMARY SCHOOL IN GOOGONG**  
GORMAN DRIVE, GOOGONG

NORTH

5000 10000 15000 20000 25000 50000

09 JUNE 2021

PROJECT PHASE SERIES NUMBER REVISION

GOOG - SSDA - 005 D







- LEGEND:
- ADMIN/STAFF
  - AMENITIES
  - HALL
  - LIBRARY
  - SERVICES
  - SPECIAL EDUCATION
  - SPECIAL PROGRAMS
  - TEACHING SPACE

9/06/2021 11:47:06 AM

AMENDMENTS				DESCRIPTION
REV	BY	DATE		
A	JK	06/05/2021	DRAFT SSDA	
B	JK	17/05/2021	DRAFT T.O.A	
C	PA	26/05/2021	ISSUED FOR SSDA	
D	PA	09/06/2021	ISSUED FOR SSDA LODGEMENT	

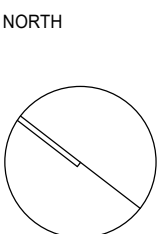


PEDAVOLI ARCHITECTS PTY LTD  
LEVEL 2  
459-468 WATTLE STREET  
ULTIMO NSW 2007 AUSTRALIA  
TEL: +61 2 9291 0000  
WEB: www.pp-a.com.au  
NOMINATED ARCHITECT:  
VINCE PEDAVOLI  
NSW REG. No. 5045



DRAWING NAME  
**COMPOSITE PLAN - FIRST FLOOR**

PROJECT  
**NEW PRIMARY SCHOOL IN GOOGONG**  
**GORMAN DRIVE, GOOGONG**

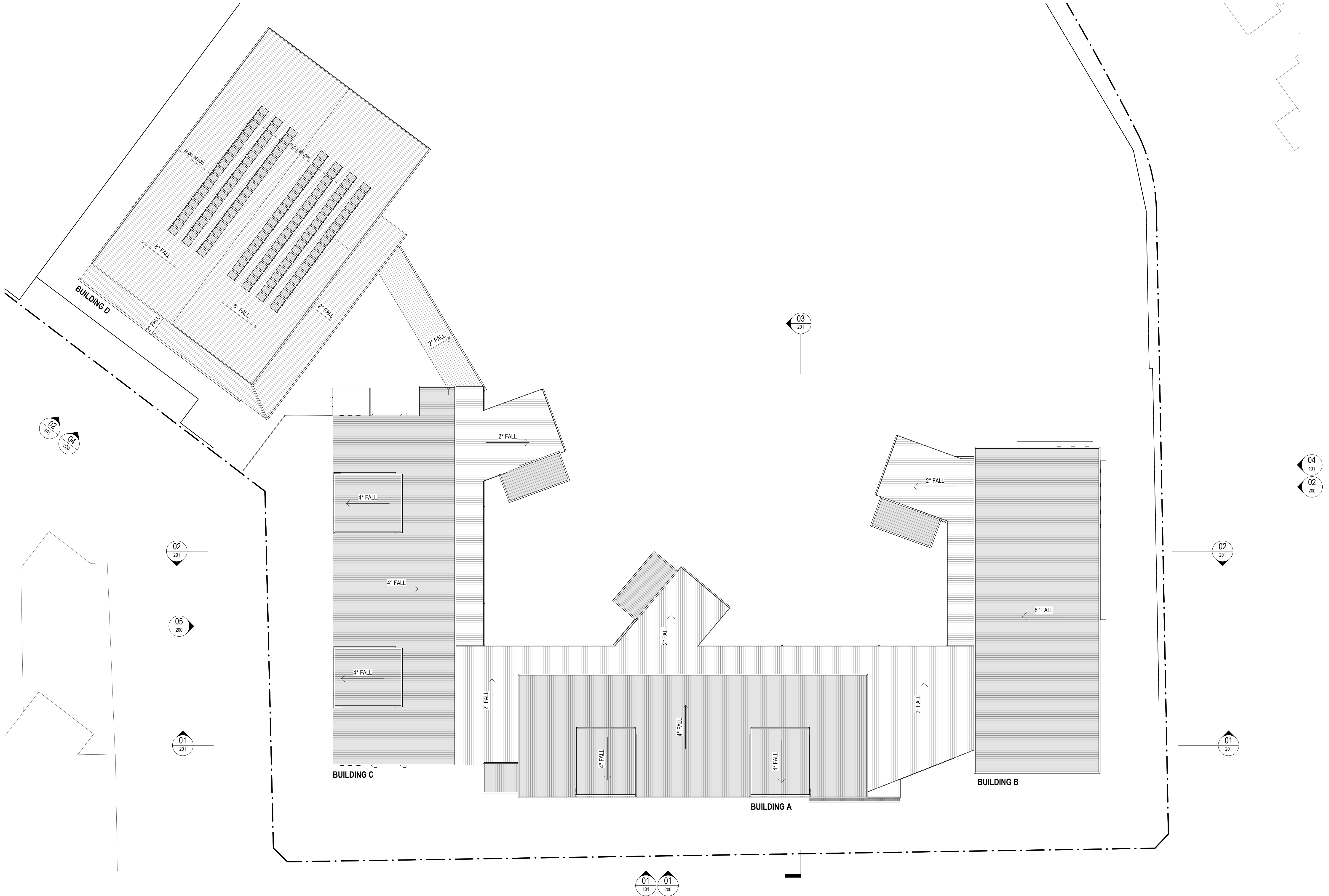


SCALE 1 : 250 @ A1			
09 JUNE 2021			
PROJECT	PHASE	SERIES NUMBER	REVISION
GOOG - SSDA - 012			D





- LEGEND:
- ADMIN/STAFF
  - AMENITIES
  - HALL
  - LIBRARY
  - SERVICES
  - SPECIAL EDUCATION
  - SPECIAL PROGRAMS
  - TEACHING SPACE



9/06/2021 12:53:21 PM

AMENDMENTS				DESCRIPTION
REV	BY	DATE		
A	JK	06/05/2021	DRAFT SSDA	
B	JK	17/05/2021	DRAFT T.O.A	
C	PA	26/05/2021	ISSUED FOR SSDA	
D	PA	09/06/2021	ISSUED FOR SSDA LODGEMENT	

**HANSEN YUNCKEN**

**Education**

PEDAVOLI ARCHITECTS PTY LTD  
LEVEL 2  
459-468 WATTLE STREET  
ULTIMO NSW 2007 AUSTRALIA  
TEL: +61 2 9291 0000  
WEB: www.pp-a.com.au  
NOMINATED ARCHITECT:  
VINCE PEDAVOLI  
NSW REG. No. 5045



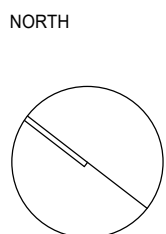
DRAWING NAME

# COMPOSITE PLAN - ROOF PLAN

PROJECT

## NEW PRIMARY SCHOOL IN GOOGONG

GORMAN DRIVE, GOOGONG

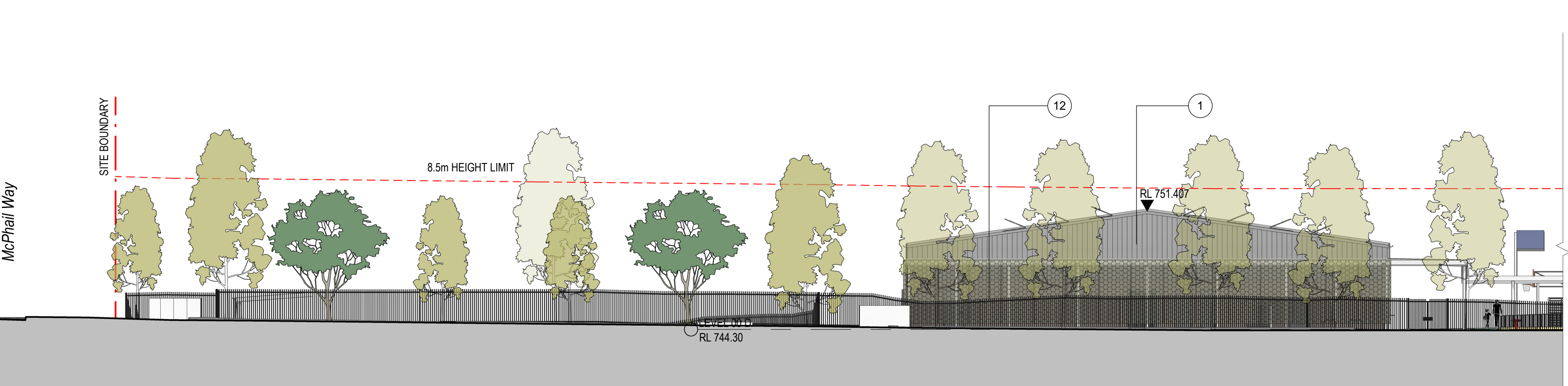


SCALE 1 : 250 @ A1			
09 JUNE 2021			
PROJECT	PHASE	SERIES NUMBER	REVISION
GOOG - SSDA - 021			D





SOUTH-WEST ELEVATION - GORMAN DRIVE 01  
1:200 011



McPHAIL WAY ELEVATION - NORTHERN END 02  
1:200 011



McPHAIL WAY ELEVATION - SOUTHERN END 03  
1:200 011



SOUTH-EAST ELEVATION - WILKINS WAY 04  
1:200 011

9/06/2021 1:00:47 PM

AMENDMENTS				
REV	BY	DATE	DRAFT	DESCRIPTION
A	JK	06/05/2021	DRAFT SSDA	
B	JK	17/05/2021	DRAFT T.O.A	
C	PA	26/05/2021	ISSUED FOR SSDA	
D	PA	09/06/2021	ISSUED FOR SSDA LODGEMENT	



## ELEVATIONS - SHEET 1

## NEW PRIMARY SCHOOL IN GOOGONG

GORMAN DRIVE, GOOGONG

20004000600080001000020000

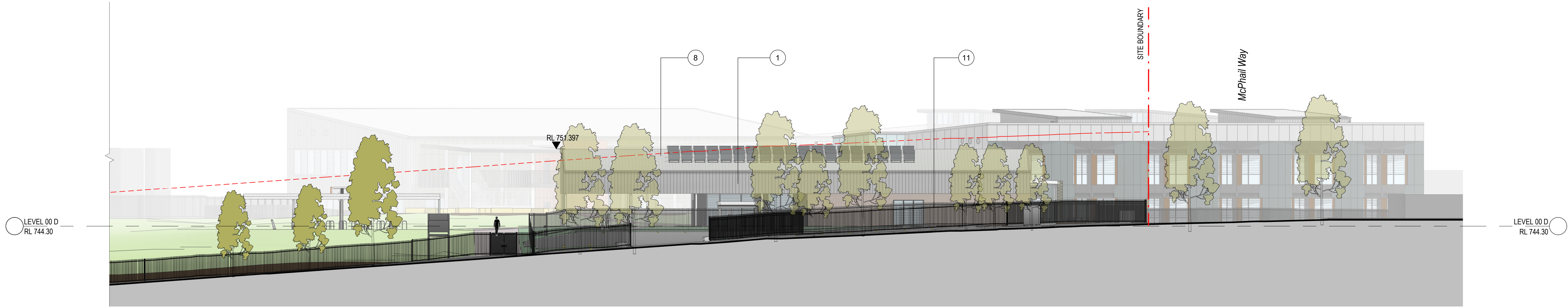
SCALE 1:200 @ A1

09 JUNE 2021

PROJECT	PHASE	SERIES NUMBER	REVISION
GOOG - SSDA - 101			D



9/06/2021 12:00:33 PM



NORTH ELEVATION - APRASIA AVENUE 1  
1:200

AMENDMENTS				DESCRIPTION
REV	BY	DATE		
A	JK	06/05/2021	DRAFT SSDA	
B	JK	17/05/2021	DRAFT T.O.A	
C	PA	26/05/2021	ISSUED FOR SSDA	
D	PA	09/06/2021	ISSUED FOR SSDA LODGEMENT	



PEDAVOLI ARCHITECTS PTY LTD  
LEVEL 2  
459-468 WATTLE STREET  
ULTIMO NSW 2007 AUSTRALIA  
TEL: +61 2 9291 0000  
WEB: www.pp-a.com.au  
NOMINATED ARCHITECT:  
VINCE PEDAVOLI  
NSW REG. No. 5045



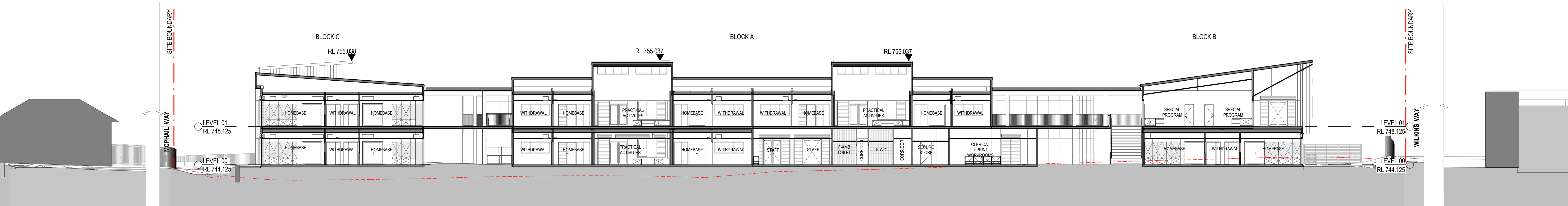
## ELEVATIONS - SHEET 2

## NEW PRIMARY SCHOOL IN GOOGONG

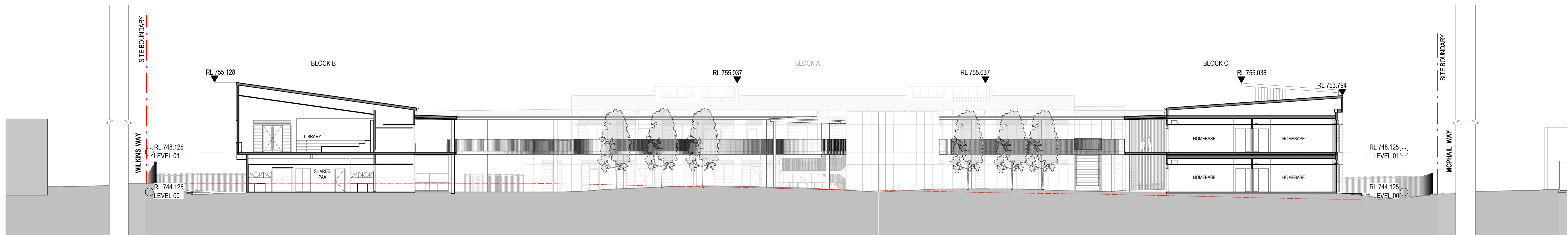
GORMAN DRIVE, GOOGONG

2000 4000 6000 8000 10000 20000			
SCALE 1 : 200 @ A1			
09 JUNE 2021			
PROJECT	PHASE	SERIES NUMBER	REVISION
GOOG - SSDA - 102			D





SECTION 01  
1:200



SECTION 02  
1:200



SECTION 03  
1:200

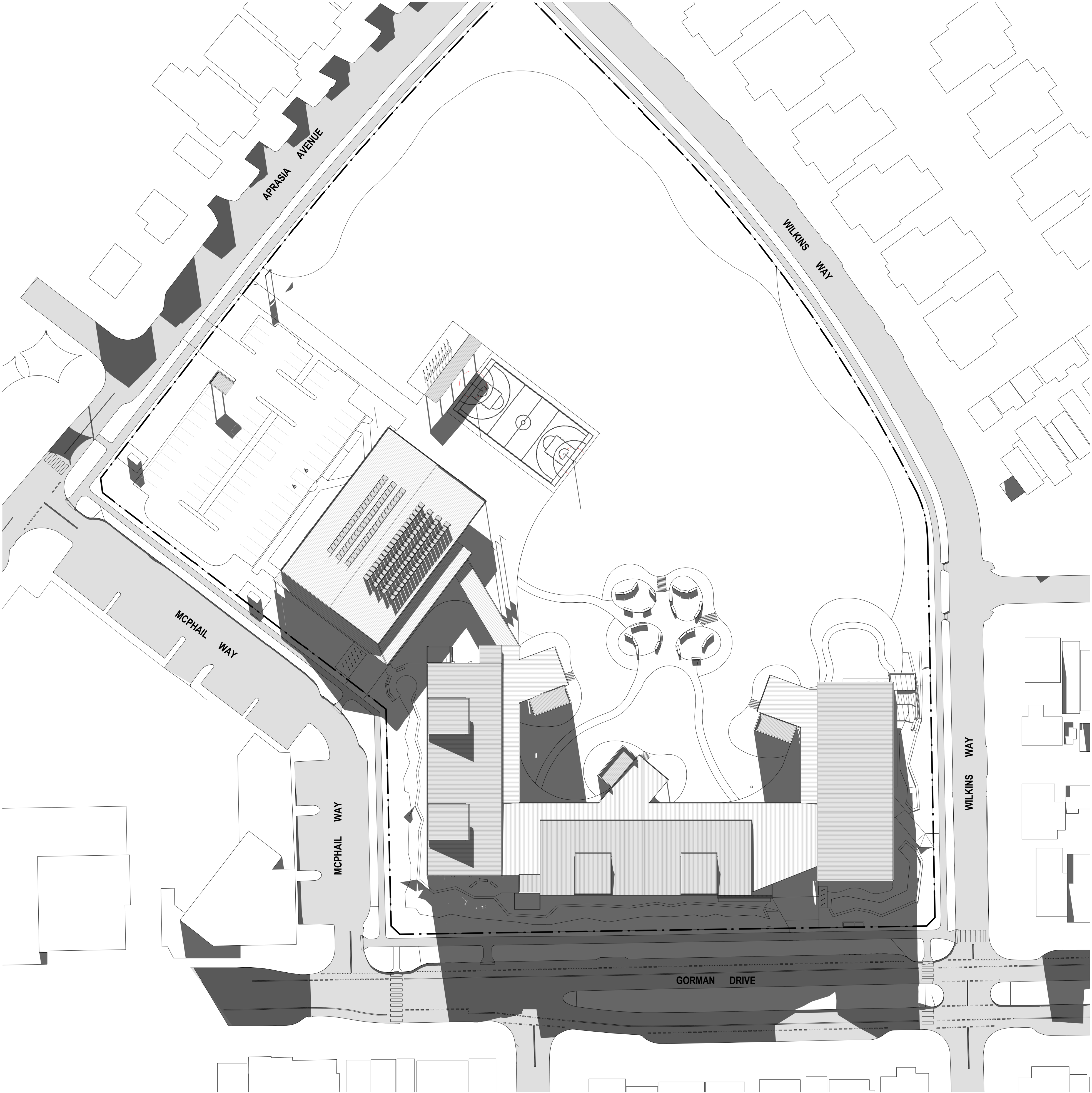
9/06/2021 1:02:04 PM

AMENDMENTS				
REV	BY	DATE	DRAFT	DESCRIPTION
A	JK	06/05/2021	DRAFT	SSDA
B	JK	17/05/2021	DRAFT	T.O.A
C	PA	26/05/2021	ISSUED	FOR SSDA
D	PA	09/06/2021	ISSUED	FOR SSDA LODGEMENT



9/06/2021 1:02:53 PM

NOTE: NIL EXISTING SHADOWS. VACANT SITE



AMENDMENTS				DESCRIPTION
REV	BY	DATE		
A	JK	06/05/2021	DRAFT SSDA	
B	JK	17/05/2021	DRAFT T.O.A	
C	PA	26/05/2021	ISSUED FOR SSDA	
D	PA	09/06/2021	ISSUED FOR SSDA LODGEMENT	

**HANSEN YUNCKEN**

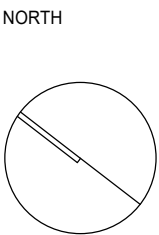
 **Education**

PEDAVOLI ARCHITECTS PTY LTD  
LEVEL 2  
458-468 WATTLE STREET  
ULTIMO NSW 2007 AUSTRALIA  
TEL: +61 2 9291 0000  
WEB: www.pp-a.com.au  
NOMINATED ARCHITECT:  
VINCE PEDAVOLI  
NSW REG. No. 5045

**PEDAVOLI**  
ARCHITECTS

DRAWING NAME  
**SHADOW STUDIES - 21 JUNE 9AM**

PROJECT  
**NEW PRIMARY SCHOOL IN GOOGONG**  
**GORMAN DRIVE, GOOGONG**



5000 10000 15000 20000 25000 50000

SCALE 1 : 500 @ A1

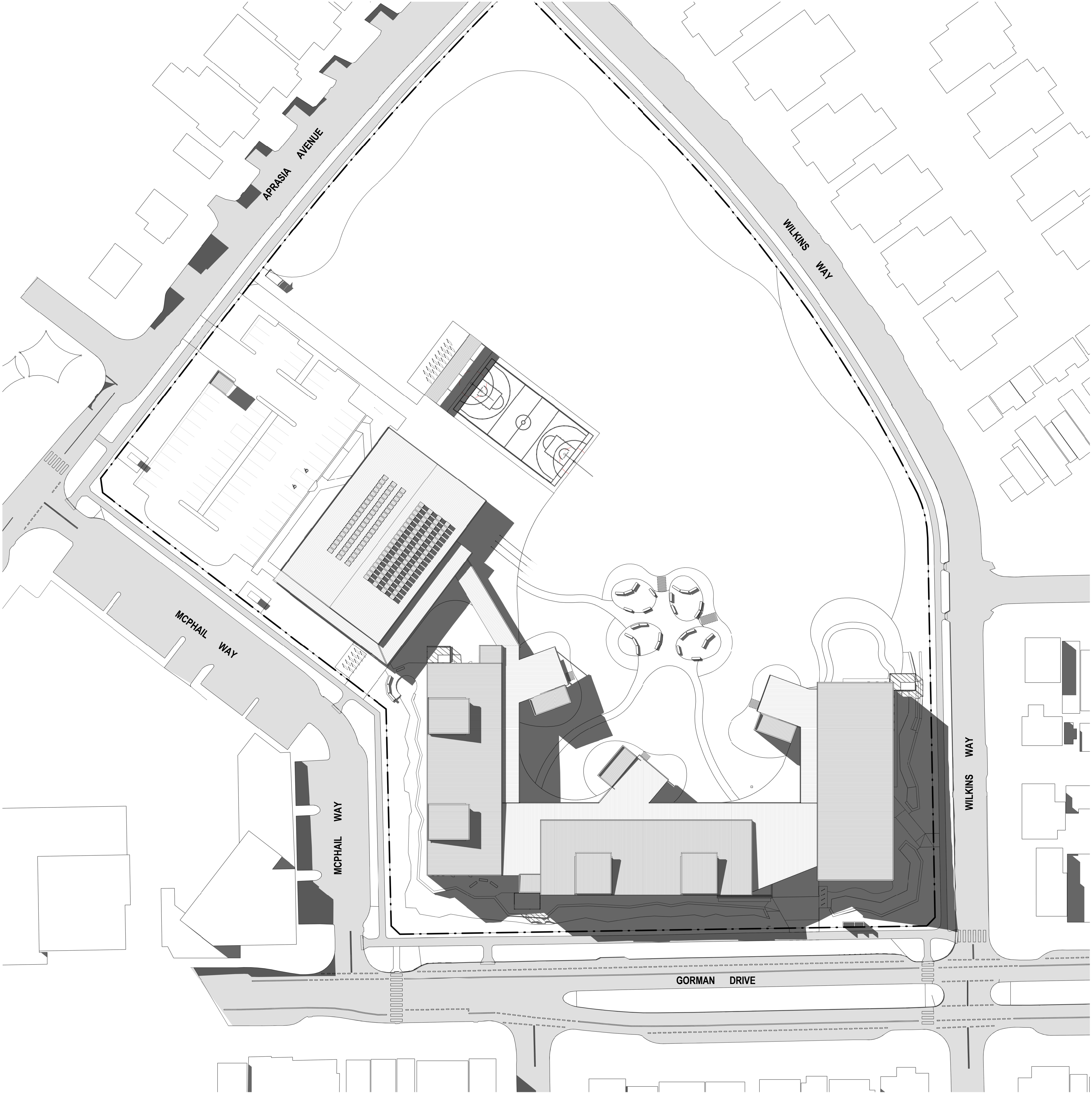
09 JUNE 2021

PROJECT	PHASE	SERIES NUMBER	REVISION
GOOG - SSDA - 301			D



9/06/2021 12:03:43 PM

NOTE: NIL EXISTING SHADOWS. VACANT SITE



AMENDMENTS				DESCRIPTION
REV	BY	DATE		
A	JK	06/05/2021	DRAFT SSDA	
B	JK	17/05/2021	DRAFT T.O.A	
C	PA	26/05/2021	ISSUED FOR SSDA	
D	PA	09/06/2021	ISSUED FOR SSDA LODGEMENT	

  
 Education

PEDAVOLI ARCHITECTS PTY LTD

LEVEL 2  
459-468 WATTLE STREET  
ULTIMO NSW 2007 AUSTRALIA

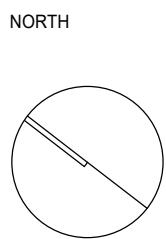
TEL: +61 2 9291 0000  
WEB: [www.pp-a.com.au](http://www.pp-a.com.au)

NOMINATED ARCHITECT:  
VINCE PEDAVOLI  
NSW REG. No. 5045



DRAWING NAME  
SHADOW STUDIES - 21 JUNE 12PM

PROJECT  
NEW PRIMARY SCHOOL IN GOOGONG  
GORMAN DRIVE, GOOGONG



5000 10000 15000 20000 25000 50000

SCALE 1 : 500 @ A1

09 JUNE 2021

PROJECT	PHASE	SERIES NUMBER	REVISION
GOOG - SSDA - 302			D



9/06/2021 12:04:28 PM

NOTE: NIL EXISTING SHADOWS. VACANT SITE



AMENDMENTS				DESCRIPTION
REV	BY	DATE		
A	JK	06/05/2021	DRAFT SSDA	
B	JK	17/05/2021	DRAFT T.O.A	
C	PA	26/05/2021	ISSUED FOR SSDA	
D	PA	09/06/2021	ISSUED FOR SSDA LODGEMENT	

**HANSEN YUNCKEN**

NSW GOVERNMENT Education

PEDAVOLI ARCHITECTS PTY LTD

LEVEL 2  
458-468 WATTLE STREET  
ULTIMO NSW 2007 AUSTRALIA

TEL: +61 2 9291 0000  
WEB: [www.pp-a.com.au](http://www.pp-a.com.au)

NOMINATED ARCHITECT:  
VINCE PEDAVOLI  
NSW REG. No. 5045

**PEDAVOLI**  
ARCHITECTS

DRAWING NAME  
**SHADOW STUDIES - 21 JUNE 3PM**

PROJECT  
**NEW PRIMARY SCHOOL IN GOOGONG**  
**GORMAN DRIVE, GOOGONG**

NORTH

5000 10000 15000 20000 25000 50000

SCALE 1 : 500 @ A1

09 JUNE 2021

PROJECT	PHASE	SERIES NUMBER	REVISION
GOOG - SSDA - 303			D





- 01 – Wall and Roof – Metal Cladding "Custom Orb"
- 02 – Cladding accent colour – Prefinished CFC
- 03 – Cladding accent colour – Prefinished CFC
- 04 – Cladding accent colour – Prefinished CFC
- 05 – Cladding accent colour – Prefinished CFC
- 06 – Cladding accent colour – Prefinished CFC
- 07 – Cladding, general colour – Prefinished CFC
- 08 – Roof sheeting – colorbond "Shale Grey"
- 09 – Cladding accent colour – Prefinished CFC
- 10 – Cladding, general colour – Prefinished CFC
- 11 – Brick – Dry Pressed Architectural
- 12 – Metal Mesh Screen – Powdercoated
- 13 – Concrete paving
- 14 – Sunshades Colour Selection



VIEW OF THE MAIN ENTRANCE (BLOCK A & B)



VIEW OF BUILDING A & B FROM PLAY SPACE

9/06/2021 12:04:53 PM

AMENDMENTS				DESCRIPTION
REV	BY	DATE		
A	JK	06/05/2021	DRAFT SSDA	
B	JK	17/05/2021	DRAFT T.O.A	
C	PA	26/05/2021	ISSUED FOR SSDA	
D	PA	09/06/2021	ISSUED FOR SSDA LODGEMENT	



PEDAVOLI ARCHITECTS PTY LTD  
LEVEL 2  
458-468 WATTLE STREET  
ULTIMO NSW 2007 AUSTRALIA  
TEL: +61 2 9291 0000  
WEB: www.pp-a.com.au  
NOMINATED ARCHITECT:  
VINCE PEDAVOLI  
NSW REG. No. 5045



RENDERS AND MATERIAL BOARD

NEW PRIMARY SCHOOL IN GOOGONG

GORMAN DRIVE, GOOGONG

09 JUNE 2021			
PROJECT	PHASE	SERIES NUMBER	REVISION
GOOG - SSDA - 401			D



GFA Definition: (LEP)

Gross Floor Area means the sum of the floor area of each floor of a building measured from the internal face of external walls, or from the internal face of walls separating the building from any other building, measured at a height of 1.4 metres above the floor, and includes—

- (a) the area of a mezzanine, and
- (b) habitable rooms in a basement or an attic, and
- (c) any shop, auditorium, cinema, and the like, in a basement or attic,

but excludes—

- (d) any area for common vertical circulation, such as lifts and stairs, and
- (e) any basement—
- (i) storage, and
- (ii) vehicular access, loading areas, garbage and services, and
- (f) plant rooms, lift towers and other areas used exclusively for mechanical services or ducting, and
- (g) car parking to meet any requirements of the consent authority (including access to that car parking), and
- (h) any space used for the loading or unloading of goods (including access to it), and
- (i) terraces and balconies with outer walls less than 1.4 metres high, and
- (j) voids above a floor at the level of a storey or storey above.

GFA - ABL BLOCKS		
BUILDING / LOCATION		AREA
	GFA - ABL BLOCKS - LEVEL 00	105.16 m²
	GFA - ABL BLOCKS - LEVEL 01	105.38 m²
		210.54 m²
GFA - BLOCK A		
BUILDING / LOCATION		AREA
	GFA - BLOCK A - LEVEL 00	965.77 m²
	GFA - BLOCK A - LEVEL 01	874.19 m²
		1839.96 m²
GFA - BLOCK B		
BUILDING / LOCATION		AREA
	GFA - BLOCK B - LEVEL 00	603.43 m²
	GFA - BLOCK B - LEVEL 01	563.71 m²
		1167.13 m²
GFA - BLOCK C		
BUILDING / LOCATION		AREA
	GFA - BLOCK C - LEVEL 00	875.51 m²
	GFA - BLOCK C - LEVEL 01	875.25 m²
		1750.76 m²
GFA - BLOCK D		
BUILDING / LOCATION		AREA
	GFA - BLOCK D - LEVEL 00	762.11 m²
		762.11 m²

SITE AREA:	28118.39m²
GFA TOTAL:	5787.83m²
FLOOR SPACE RATIO:	0.21 : 1



9/06/2021 12:05:27 PM

REV	BY	DATE	DESCRIPTION
A	JK	06/05/2021	DRAFT SSDA
B	JK	17/05/2021	DRAFT T.O.A
C	PA	26/05/2021	ISSUED FOR SSDA
D	PA	09/06/2021	ISSUED FOR SSDA LODGEMENT

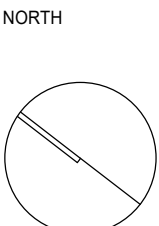


PEDAVOLI ARCHITECTS PTY LTD  
LEVEL 2  
459-468 WATTLE STREET  
ULTIMO NSW 2007 AUSTRALIA  
TEL: +61 2 9291 0000  
WEB: www.pda.com.au  
NOMINATED ARCHITECT:  
VINCE PEDAVOLI  
NSW REG. No. 5045



## GFA PLANS AND AREA CALCULATION

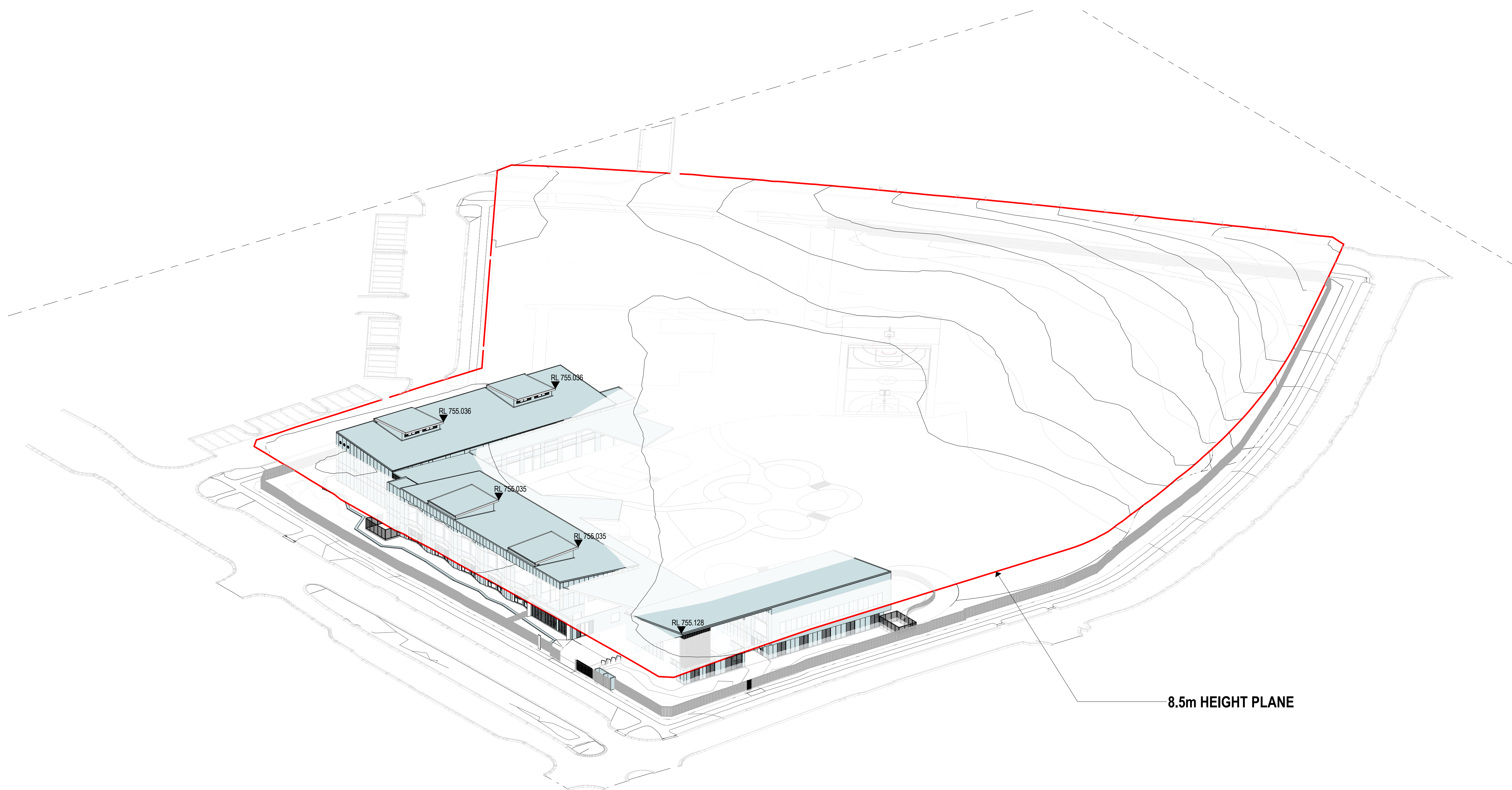
PROJECT  
NEW PRIMARY SCHOOL IN GOOGONG  
GORMAN DRIVE, GOOGONG



5000	10000	15000	20000	25000	50000
SCALE 1 : 1:500 @ A1					
09 JUNE 2021					
PROJECT	PHASE	SERIES NUMBER	REVISION		
GOOG - SSDA - 501			D		



9/06/2021 1:04:42 PM



AMENDMENTS				DESCRIPTION
REV	BY	DATE		
A	JK	06/05/2021	DRAFT SSDA	
B	JK	17/05/2021	DRAFT T.O.A	
C	PA	26/05/2021	ISSUED FOR SSDA	
D	PA	09/06/2021	ISSUED FOR SSDA LODGEMENT	

**HANSEN YUNCKEN**

 **Education**

PEDAVOLI ARCHITECTS PTY LTD  
LEVEL 2  
459-468 WATTLE STREET  
ULTIMO NSW 2007 AUSTRALIA  
TEL: +61 2 9291 0000  
WEB: www.pp-a.com.au  
NOMINATED ARCHITECT:  
VINCE PEDAVOLI  
NSW REG. No. 5045

**PEDAVOLI**  
ARCHITECTS

## HEIGHT PLANE DIAGRAM

## NEW PRIMARY SCHOOL IN GOOGONG

GORMAN DRIVE, GOOGONG

SCALE @ A1			
09 JUNE 2021			
PROJECT	PHASE	SERIES NUMBER	REVISION
GOOG - SSDA - 511			D