

# John Whiteway Drive Development Landscape Section 4.55 Stage 02 - Blocks C & D

89 John Whiteway Drive, Gosford, NSW

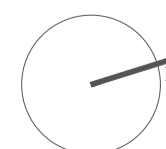


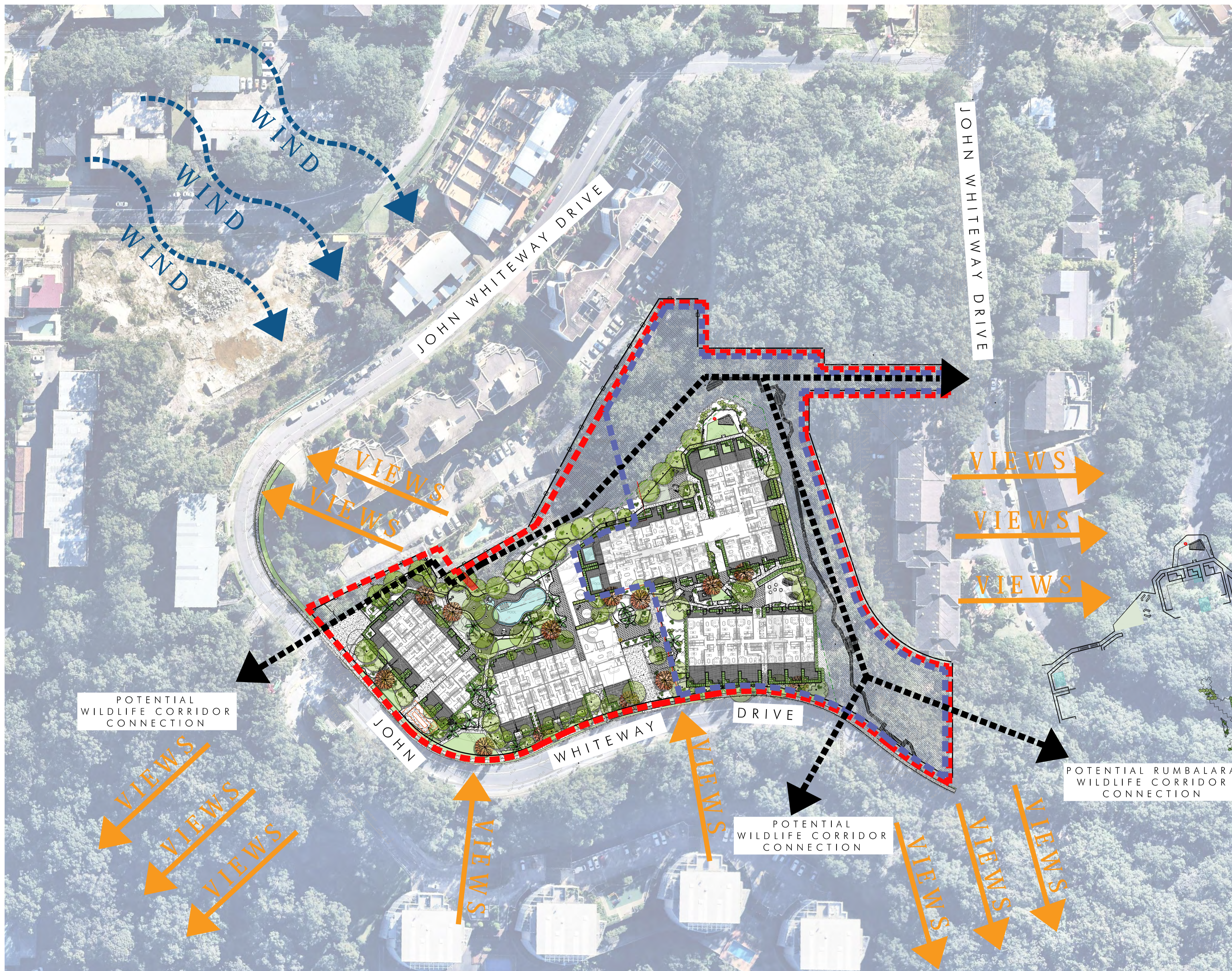
--- EXTENT OF WORKS: DA  
--- EXTENT OF WORKS: SECTION 4.55 STAGE 02

## LANDSCAPE SHEET REGISTER

DRAWING	TITLE	REVISION
10-19.00	COVERSHEET	S
10-19.01	CONTEXT PLAN	S
10-19.02	LANDSCAPE MASTER PLAN	S
10-19.03	MOODBOARD IMAGERY 01	S
10-19.04	MOODBOARD IMAGERY 02	S
10-19.05	MOODBOARD IMAGERY 03	S
10-19.06	MOODBOARD IMAGERY 04	S
10-19.07	MATERIAL PALETTE 01	S
10-19.08	MATERIAL PALETTE 02	S
10-19.09	MATERIAL PALETTE 03	S
10-19.10	PLANTING PALETTE - PODIUM	S
10-19.11	PLANTING PALETTE - ADZ	S
10-19.12	PLANT SCHEDULE & NOTES	S
10-19.13	DIRECTORY PLAN	S
10-19.14	SITE DEEP SOIL PLAN	S
10-19.15	DEVELOPMENT SITE CANOPY COVERAGE PLAN	S
10-19.16	SITE TREE CANOPY COVERAGE PLAN	S
10-19.17	VEGETATION CORRIDOR & BOARDWALK PLAN	S
10-19.18	SPATIAL PROGRAMME PLAN	S
10-19.19	CIRCULATION PLAN	S
10-19.20	BUILT FORM & CHARACTER PLAN	S
10-19.21	SITE GREEN ROOF PLAN	S
10-19.22	LANDSCAPE VEGETATION CORRIDOR DIAGRAM	S
10-19.23	SHEET DIRECTORY	S
10-19.30	PODIUM HARDSCAPE PLAN 01	S
10-19.31	PODIUM HARDSCAPE PLAN 02	S
10-19.32	PODIUM HARDSCAPE PLAN 03	S
10-19.33	PODIUM HARDSCAPE PLAN 04	S
10-19.34	PODIUM HARDSCAPE PLAN 05	S
10-19.35	PODIUM HARDSCAPE PLAN 06	S
10-19.36	PODIUM HARDSCAPE PLAN 07	S
10-19.37	PODIUM HARDSCAPE PLAN 08 - COMMUNAL AREA 1	S
10-19.40	PODIUM SOFTSCAPE PLAN 01	S
10-19.41	PODIUM SOFTSCAPE PLAN 02	S
10-19.42	PODIUM SOFTSCAPE PLAN 03	S
10-19.43	PODIUM SOFTSCAPE PLAN 04	S
10-19.44	PODIUM SOFTSCAPE PLAN 05	S
10-19.45	PODIUM SOFTSCAPE PLAN 06	S
10-19.46	PODIUM SOFTSCAPE PLAN 07	S
10-19.47	PODIUM SOFTSCAPE PLAN 08 - COMMUNAL AREA 1	S
10-19.50	LANDSCAPE SECTIONS KEY PLAN	S
10-19.51	COMMUNAL AREA DETAIL PLAN - LOWER PODIUM	S
10-19.52	LANDSCAPE SECTIONS 01	S
10-19.53	COMMUNAL AREA DETAIL PLAN - UPPER PODIUM	S
10-19.54	LANDSCAPE SECTIONS 02	S
10-19.55	LANDSCAPE SECTIONS 03	S
10-19.56	LANDSCAPE SECTIONS 04	S
10-19.60	LANDSCAPE DETAILS 01	S
10-19.61	LANDSCAPE DETAILS 02	S
10-19.62	BOARDWALK DETAILS 01	S
10-19.63	BOARDWALK DETAILS 02	S
10-19.70	ADG COMPLIANT PLANTERS 01	S
10-19.71	ADG COMPLIANT PLANTERS 02	S
10-19.72	ADG COMPLIANT PLANTERS 03	S
10-19.73	ADG COMPLIANT PLANTERS 04	S
10-19.74	ADG COMPLIANT PLANTERS 05	S
10-19.75	ADG COMPLIANT PLANTERS 06	S
10-19.76	ADG COMPLIANT PLANTERS 07	S
10-19.80	ADDENDUM - SECTION KEY PLAN	S
10-19.81	ADDENDUM - LANDSCAPE SECTIONS 01	S
10-19.82	ADDENDUM - LANDSCAPE SECTIONS 02	S
10-19.83	ADDENDUM - LANDSCAPE SECTIONS 03	S
10-19.84	ADDENDUM - SITE TREE REMOVAL DIAGRAM	S
10-19.85	ADDENDUM - LANDSCAPE SECTIONS 04	S
10-19.86	ADDENDUM - LANDSCAPE SECTIONS 05	S
10-19.87	ADDENDUM - LANDSCAPE SECTIONS 06	S

PLEASE NOTE: THE GREY OUT PAGES DO NOT FORM PART OF THIS SECTION 4.55

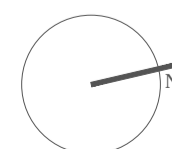




- - - - - EXTENT OF SITE  
- - - - - EXTENT OF WORKS: SECTION 4.55 STAGE 02

**distinctive Living Design**  
 Landscape & Interior Architecture - Design - Consultancy  
 114 Argyle Street,  
 Camden NSW 2570  
 T +61 2 4655 1881  
 admin@distinctive.net.au  
 www.distinctive.net.au  
Distinctive Gardens & Interiors T/A distinctive Living Design

Rev.	Revision note:	Date:	Dwn by:
I	AMENDMENTS FOR DA APPROVAL	06.08.20	PG/LZ
J	AMENDMENTS FOR DA APPROVAL	07.08.20	PG/LZ
K	AMENDMENTS FOR DA APPROVAL	21.08.20	IJ
L	AMENDMENTS FOR DA APPROVAL	14.09.20	PG
M	AMENDMENTS FOR DA APPROVAL	19.10.20	JG/LZ
N	AMENDMENTS FOR DA APPROVAL	11.02.21	IJ
O	AMENDMENTS FOR DA APPROVAL	27.05.21	PG/LZ
P	AMENDMENTS FOR DA APPROVAL	10.08.21	IJ
Q	FOR SECTION 4.55 APPROVAL	16.11.21	IJ
R	FOR SECTION 4.55 APPROVAL	18.01.22	PG/LZ
S	FOR SECTION 4.55 APPROVAL	15.02.22	CX



Project Title:  
**John Whiteway Drive Development Gosford - S4.55 Stage 02**  
 Project Address:  
**89 John Whiteway Drive, Gosford**  
 Drawing Title:  
**CONTEXT PLAN**  
Location of all services is to be carried out by all contractors prior to commencement of works. Please Do-Before-You-Dig Ph: 1100, Refer plans by Architects, Engineers & Surveyors for other working drawings. Information on Distinctive plans is for reference & co-ordination only. This drawings are to be read in conjunction with prepared specifications & details. It is the responsibility of the contractor to notify Distinctive of any contradiction within the plans & receive appropriate direction prior to construction works. Final layout is to be determined on the spot at the direction of the site supervisor. Plans are copyright to Distinctive Gardens & Interiors Pty Ltd.

Scale @ A1/A3: **1:750/ 1:1500**    Client: **JWD Developments Pty Ltd**  
 Drawing Date: **15.02.2022**    Drawn/Checked: **CX/LZ/PG/MS/DB**    Drawing Status: **S4.55 S02**  
 Project Number: **10-19**    Drawing Number: **10-19.01**    Issue: **S**

**distinctive**

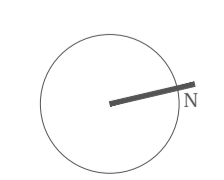
KEY

- - - EXTENT OF WORKS :DA
- - - EXTENT OF WORKS SECTION 4.55 STAGE 02



**distinctive Living Design**  
 Landscape & Interior Architecture - Design - Consultancy  
 114 Argyle Street,  
 Camden NSW 2570  
 T +61 2 4655 1881  
 admin@distinctive.net.au  
 www.distinctive.net.au  
 Distinctive Gardens & Interiors T/A Distinctive Living Design

Rev:	Revision note:	Date:	Dwn by:
I	AMENDMENTS FOR DA APPROVAL	06.08.20	PG/IZ
J	AMENDMENTS FOR DA APPROVAL	07.08.20	PG/IZ
K	AMENDMENTS FOR DA APPROVAL	21.08.20	IZ
L	AMENDMENTS FOR DA APPROVAL	14.09.20	PG
M	AMENDMENTS FOR DA APPROVAL	19.10.20	JG/IZ
N	AMENDMENTS FOR DA APPROVAL	11.02.21	IZ
O	AMENDMENTS FOR DA APPROVAL	27.05.21	PG/IZ
P	AMENDMENTS FOR DA APPROVAL	10.08.21	IZ
Q	FOR SECTION 4.55 APPROVAL	16.11.21	IZ
R	FOR SECTION 4.55 APPROVAL	18.01.22	PG/IZ
S	FOR SECTION 4.55 APPROVAL	15.02.22	CX

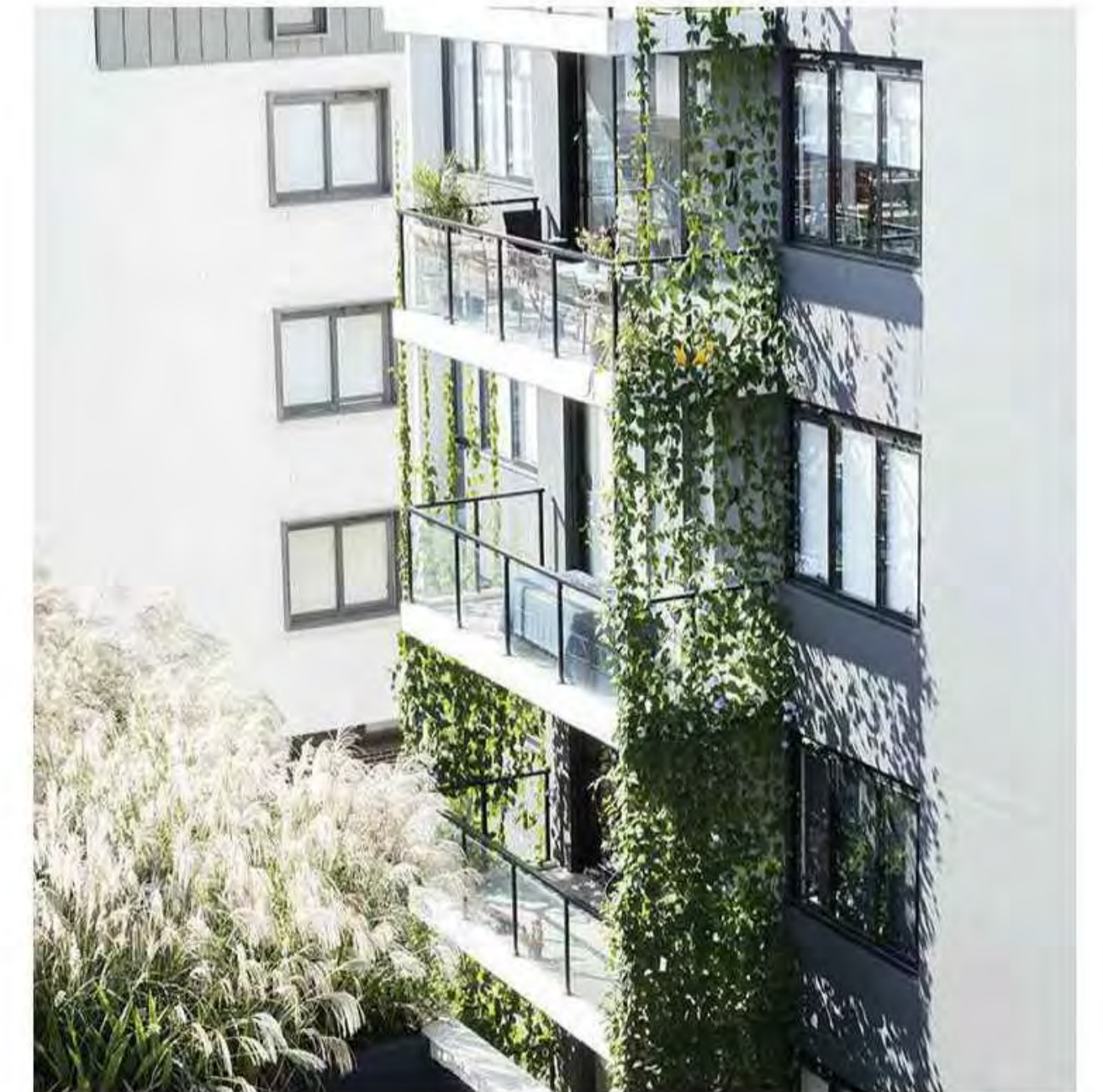


This document has been validated by Mark Santangelo  
 Registered Landscape Architect (AIA), BLArch, Dip Hort  
 Verified by Dwan Boone  
 DIRECTOR

Project Title:  
**John Whiteway Drive Development Gosford - S4.55 Stage 02**  
 Project Address:  
**89 John Whiteway Drive, Gosford**  
 Drawing Title:  
**LANDSCAPE MASTER PLAN**  
 Location of all services is to be carried out by all contractors prior to commencement of works. Phone Dial Before You Dig Ph: 1100.  
 Refer plans by Architect, Engineers & Surveyors for other working drawings. Information on Distinctive plans is for reference & co-ordination only. This drawing is to be read in conjunction with prepared specifications & details. It is the responsibility of the contractor to notify Distinctive of any contradiction within the plans & receive appropriate direction prior to construction works. Final layout is to be determined on site and at the direction of the site supervisor. Plans are copyright to Distinctive Gardens & Interiors Pty Ltd.

Scale @ A1/A3: <b>1:400/ 1:800</b>	Client: JWD Developments Pty Ltd
Drawing Date: <b>15.02.2022</b>	Drawn/Checked CX/IZ/PG/MS/DB
Project Number: <b>10-19</b>	Drawing Number: <b>10-19.02</b>
	Drawing Status: <b>S4.55 S02</b>
	Issue: <b>S</b>





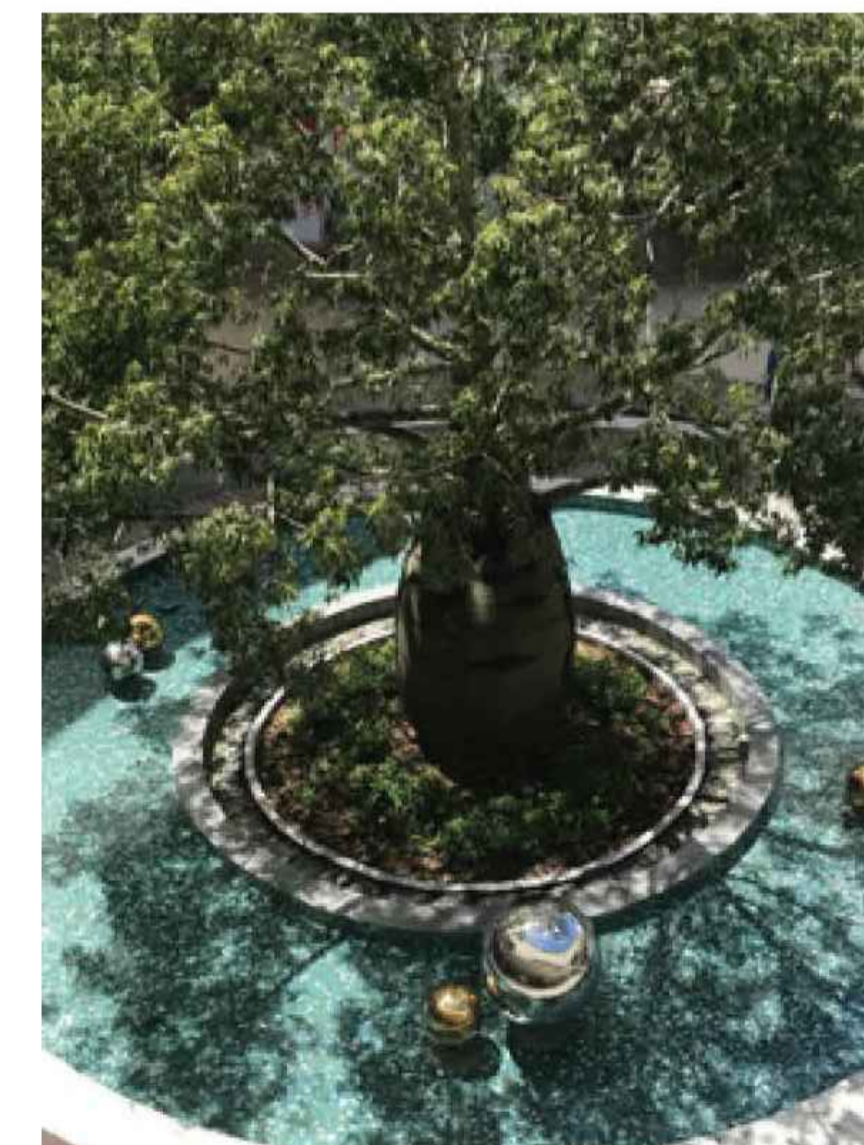
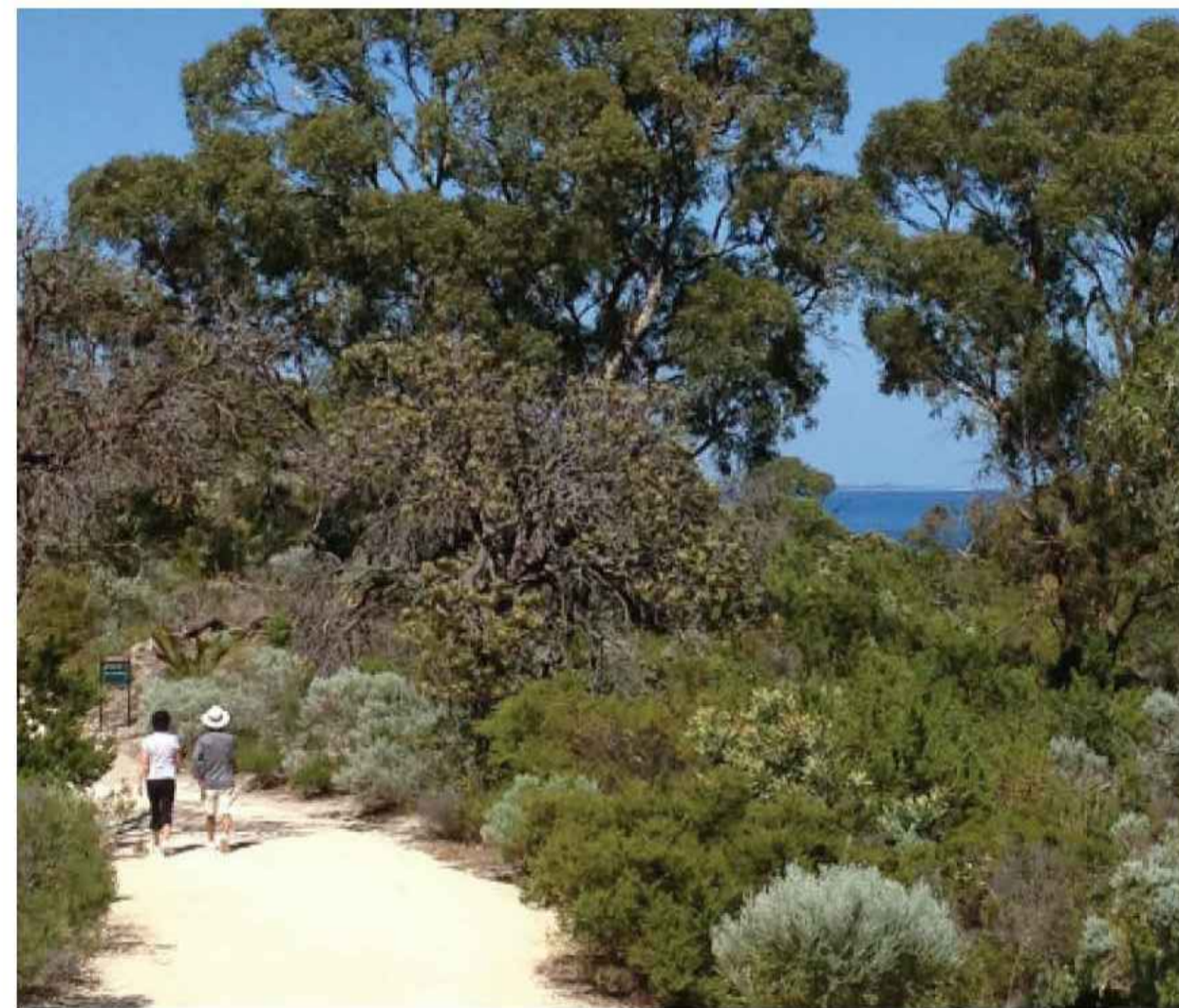
Rev:	Revision note:	Date:	Dwn by:
I	AMENDMENTS FOR DA APPROVAL	06.08.20	PG/LZ
J	AMENDMENTS FOR DA APPROVAL	07.08.20	PG/LZ
K	AMENDMENTS FOR DA APPROVAL	21.08.20	IZ
L	AMENDMENTS FOR DA APPROVAL	14.09.20	PG
M	AMENDMENTS FOR DA APPROVAL	19.10.20	JG/LZ
N	AMENDMENTS FOR DA APPROVAL	11.02.21	IZ
O	AMENDMENTS FOR DA APPROVAL	27.05.21	PG/LZ
P	AMENDMENTS FOR DA APPROVAL	10.08.21	IZ
Q	FOR SECTION 4.55 APPROVAL	16.11.21	IZ
R	FOR SECTION 4.55 APPROVAL	18.01.22	PG/LZ
S	FOR SECTION 4.55 APPROVAL	15.02.22	CX





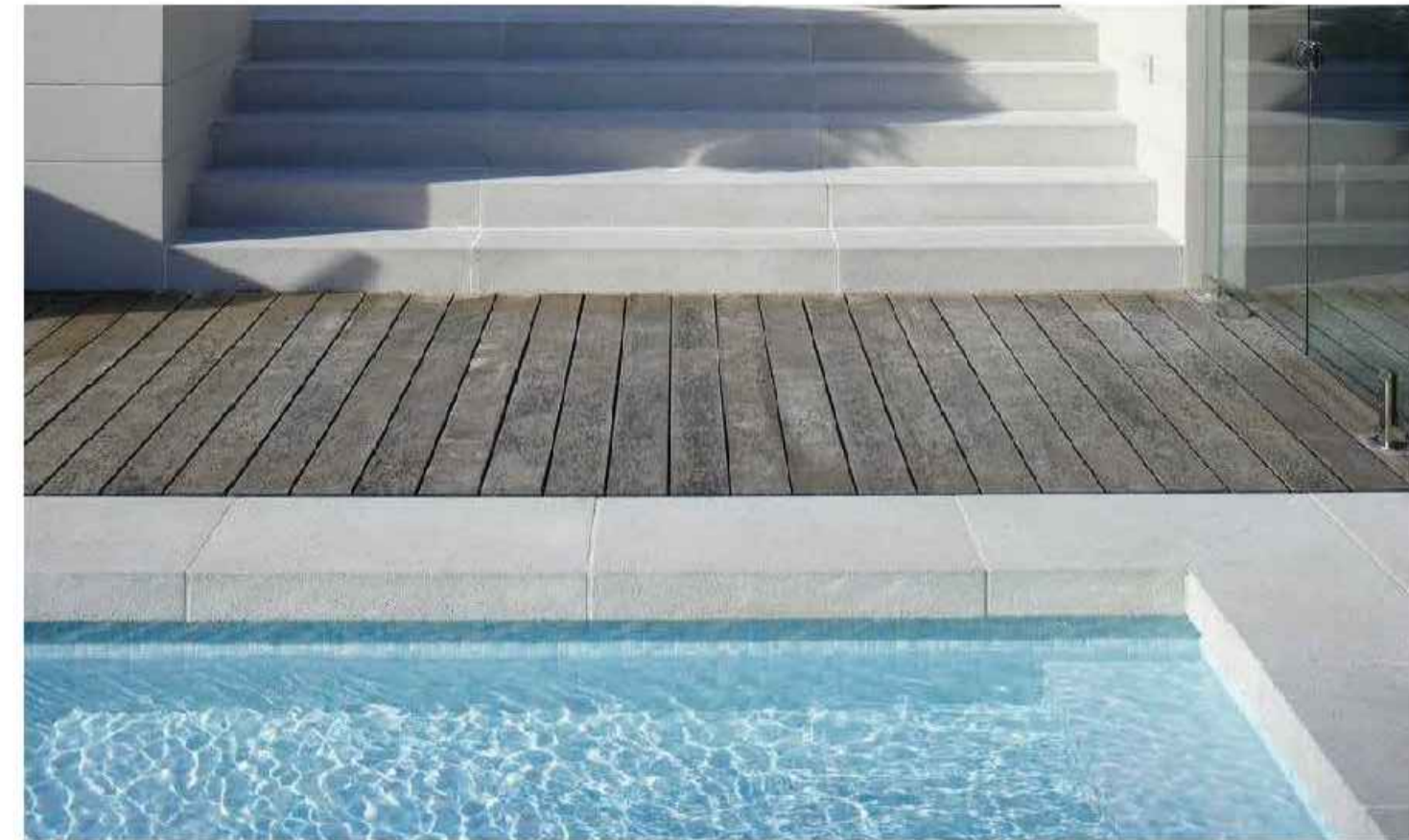
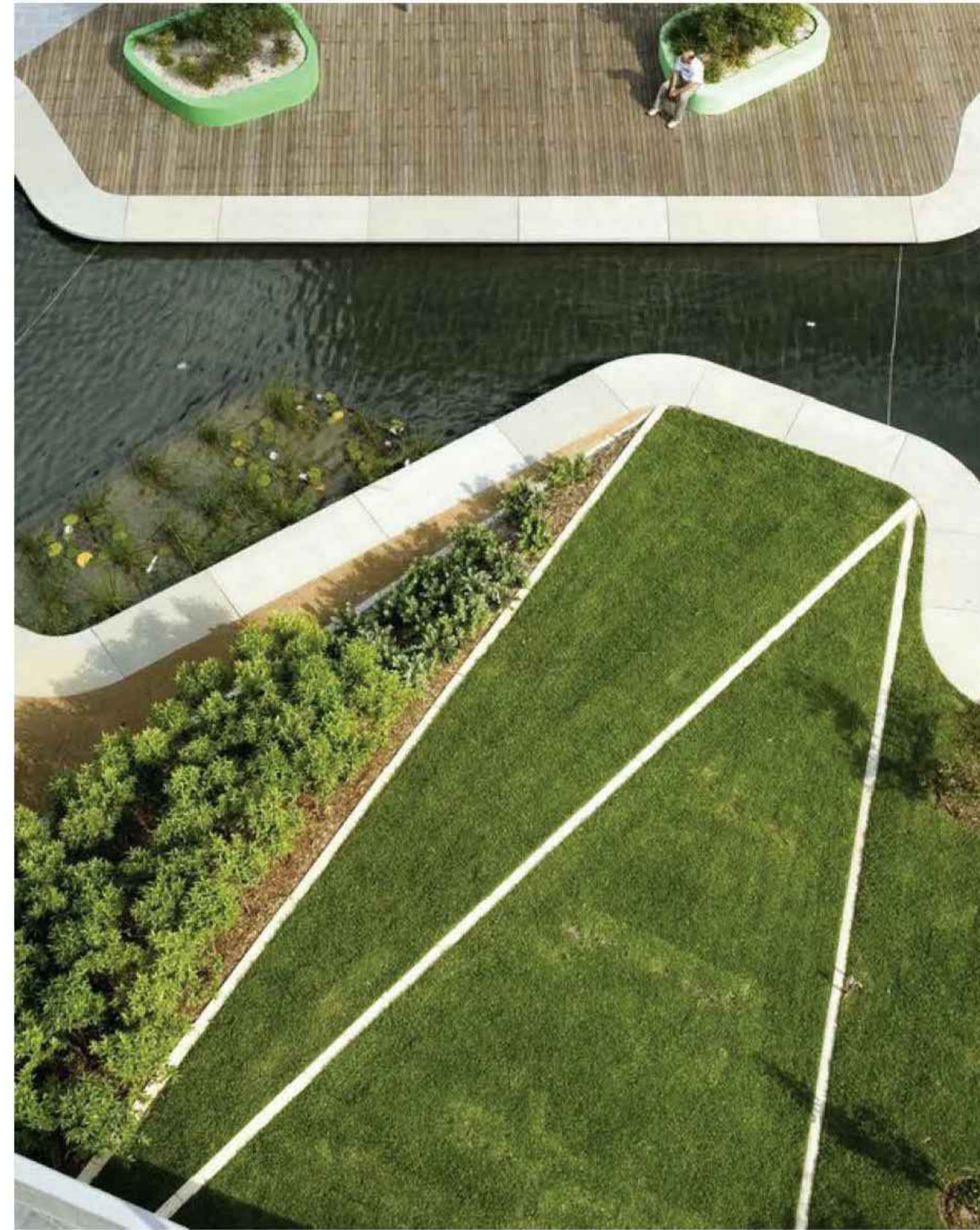
Rev:	Revision note:	Date:	Dwn by:
I	AMENDMENTS FOR DA APPROVAL	06.08.20	PG/LZ
J	AMENDMENTS FOR DA APPROVAL	07.08.20	PG/LZ
K	AMENDMENTS FOR DA APPROVAL	21.08.20	IZ
L	AMENDMENTS FOR DA APPROVAL	14.09.20	PG
M	AMENDMENTS FOR DA APPROVAL	19.10.20	JG/LZ
N	AMENDMENTS FOR DA APPROVAL	11.02.21	IZ
O	AMENDMENTS FOR DA APPROVAL	27.05.21	PG/LZ
P	AMENDMENTS FOR DA APPROVAL	10.08.21	IZ
Q	FOR SECTION 4.55 APPROVAL	16.11.21	IZ
R	FOR SECTION 4.55 APPROVAL	18.01.22	PG/LZ
S	FOR SECTION 4.55 APPROVAL	15.02.22	CX





Rev:	Revision note:	Date:	Dwn by:
I	AMENDMENTS FOR DA APPROVAL	06.08.20	PG/LZ
J	AMENDMENTS FOR DA APPROVAL	07.08.20	PG/LZ
K	AMENDMENTS FOR DA APPROVAL	21.08.20	IZ
L	AMENDMENTS FOR DA APPROVAL	14.09.20	PG
M	AMENDMENTS FOR DA APPROVAL	19.10.20	JG/LZ
N	AMENDMENTS FOR DA APPROVAL	11.02.21	IZ
O	AMENDMENTS FOR DA APPROVAL	27.05.21	PG/LZ
P	AMENDMENTS FOR DA APPROVAL	10.08.21	IZ
Q	FOR SECTION 4.55 APPROVAL	16.11.21	IZ
R	FOR SECTION 4.55 APPROVAL	18.01.22	PG/LZ
S	FOR SECTION 4.55 APPROVAL	15.02.22	CX





Rev:	Revision note:	Date:	Dwn by:
I	AMENDMENTS FOR DA APPROVAL	06.08.20	PG/LZ
J	AMENDMENTS FOR DA APPROVAL	07.08.20	PG/LZ
K	AMENDMENTS FOR DA APPROVAL	21.08.20	IZ
L	AMENDMENTS FOR DA APPROVAL	14.09.20	PG
M	AMENDMENTS FOR DA APPROVAL	19.10.20	JG/LZ
N	AMENDMENTS FOR DA APPROVAL	11.02.21	IZ
O	AMENDMENTS FOR DA APPROVAL	27.05.21	PG/LZ
P	AMENDMENTS FOR DA APPROVAL	10.08.21	IZ
Q	FOR SECTION 4.55 APPROVAL	16.11.21	IZ
R	FOR SECTION 4.55 APPROVAL	18.01.22	PG/LZ
S	FOR SECTION 4.55 APPROVAL	15.02.22	CX





Concrete - Broom finishes



Concrete - Exposed finishes



Concrete - Oxide finishes



Limestone paving



Sandstone paving



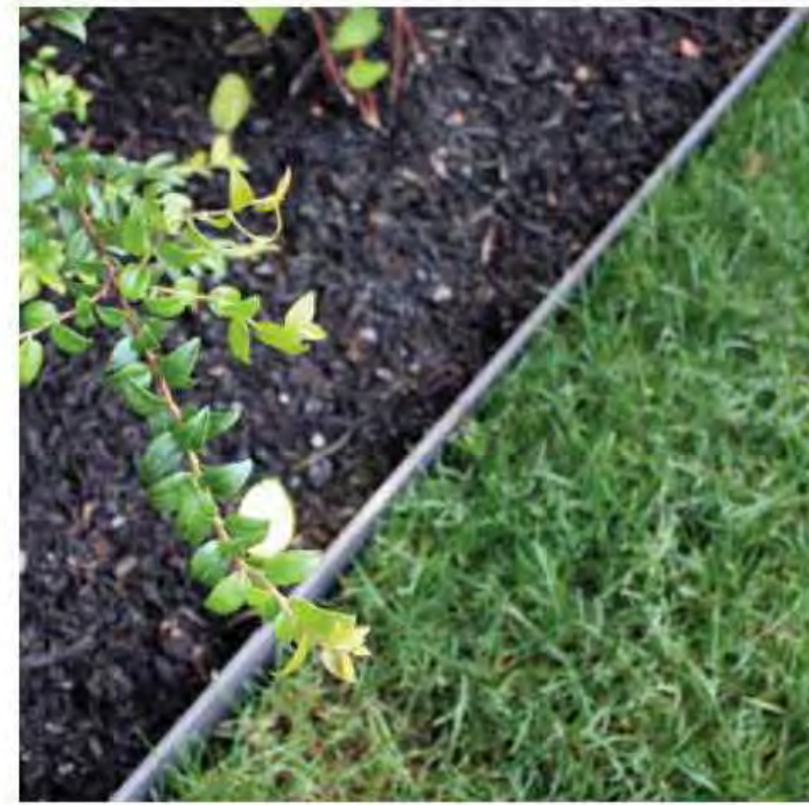
Organic steppers in gravels



Pebble Banding



Concrete edge



Steel edge



Stabilised Deco granite



Rock elements in landscape



Concrete stairs with tiered landscape



Turf - Zoysia



Putting green - synthetic turf



Rock boulders



Aluminium boardwalk structure



Aluminium viewing platform

Rev:	Revision note:	Date:	Drawn by:
I	AMENDMENTS FOR DA APPROVAL	06.08.20	PG/LZ
J	AMENDMENTS FOR DA APPROVAL	07.08.20	PG/LZ
K	AMENDMENTS FOR DA APPROVAL	21.08.20	IJ
L	AMENDMENTS FOR DA APPROVAL	14.09.20	PG
M	AMENDMENTS FOR DA APPROVAL	19.10.20	JG/LZ
N	AMENDMENTS FOR DA APPROVAL	11.02.21	IJ
O	AMENDMENTS FOR DA APPROVAL	27.05.21	PG/LZ
P	AMENDMENTS FOR DA APPROVAL	10.08.21	IJ
Q	FOR SECTION 4.55 APPROVAL	16.11.21	IJ
R	FOR SECTION 4.55 APPROVAL	18.01.22	PG/LZ
S	FOR SECTION 4.55 APPROVAL	15.02.22	CX





Sandstone block wall



Sandstone planter box



In-situ concrete walls



Aluminum powdercoated fencing



Lightweight arbor



Dimension sandstone block



Dry stone planter box



In-situ concrete planter box



Frameless glass pool fence



Rock face stabilised mesh



Dining space with naturalistic landscape



Timber deck - natural grey

Rev:	Revision note:	Date:	Dwn by:
I	AMENDMENTS FOR DA APPROVAL	06.08.20	PG/LZ
J	AMENDMENTS FOR DA APPROVAL	07.08.20	PG/LZ
K	AMENDMENTS FOR DA APPROVAL	21.08.20	IZ
L	AMENDMENTS FOR DA APPROVAL	14.09.20	PG
M	AMENDMENTS FOR DA APPROVAL	19.10.20	JG/LZ
N	AMENDMENTS FOR DA APPROVAL	11.02.21	IZ
O	AMENDMENTS FOR DA APPROVAL	27.05.21	PG/LZ
P	AMENDMENTS FOR DA APPROVAL	10.08.21	IZ
Q	FOR SECTION 4.55 APPROVAL	16.11.21	IZ
R	FOR SECTION 4.55 APPROVAL	18.01.22	PG/LZ
S	FOR SECTION 4.55 APPROVAL	15.02.22	CX





Bocce court



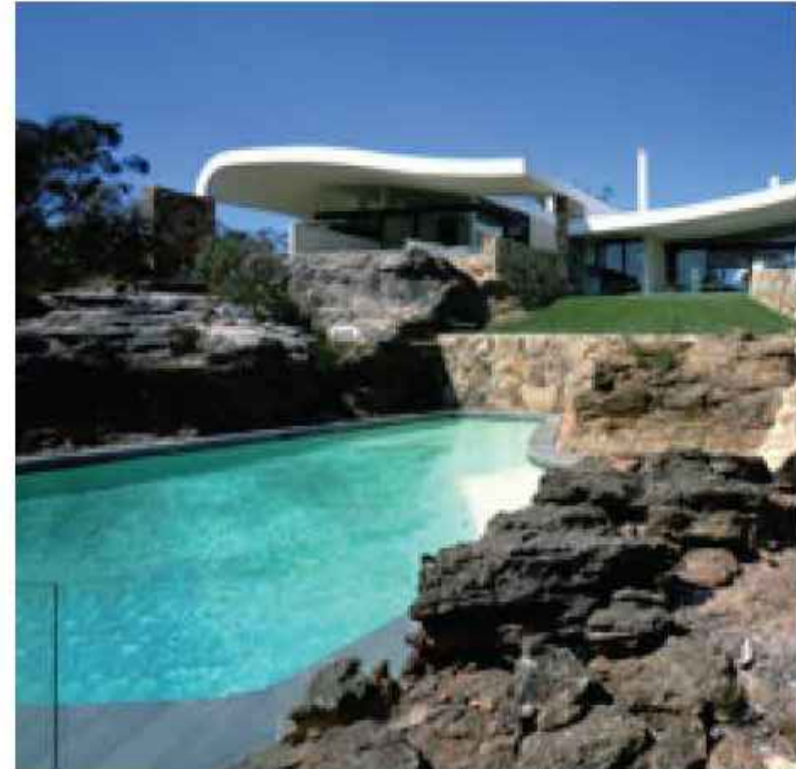
Rooftop leisure area



Rooftop infinity pool



Corten steel in landscape



Rock swimming pool



Rooftop seating area



Corten steel vegetable garden



Putting green



Dining pods



Cantilever timber bench



Low seating wall with timber capping



Dynamic lightweight concrete bench



Rock elements in naturalistic landscape



Dynamic lightweight concrete pots + bench seats



Oversized lightweight GRC pots



## Trees



Banksia integrifolia



Brachychiton rupestris



Cupaniopsis anacardioides



Elaeocarpus eumundii



Glochidion ferdinandi



Livistona australis



Tristaniopsis 'Lucious'



Toona ciliata

## Shrubs > 3m



Grevillea 'Moonlight'



Syzygium 'Blaze'



Syzygium cascade



Acmena smithii "Minor"



Beschorneria yuccoides



Doryanthes excelsa



Eremophila nivea



Macrozamia communis



Philodendron xanadu



Raphiolepis 'Snow Maiden'

## Shrubs < 3m

## Groundcovers



Santolina chamaecyparissus



Westringia fruticosa 'Grey Box'



Carpobrotus rossii 'Native Pigface'



Casuarina glauca 'Freefall'



Cissus antarctica



Helichrysum petiolare



Lomandra longifolia 'Tanika'



Pittosporum tobria 'Miss Muffet'



Senecio serpens

## Trees



Backhousia myrtifolia



Banksia integrifolia



Eucalyptus leucoxylon Rosea



Ficus obliqua



Glochidion ferdinandi



Livistona australis



Melaleuca styphelioides

## Shrubs > 3m



Grevillea 'Moonlight'



Syzygium 'Blaze'



Syzygium cascade



Acmena smithii "Minor"



Correa reflexa



Cyroress diffusus



Dianella caerulea



Doryanthes palmeri



Eremophila nivea



Santolina chamaecyparissus

## Shrubs < 3m

## Groundcovers



Macrozamia communis



Westringia fruticosa 'Grey Box'



Carpobrotus rossii 'Native Pigface'



Casuarina glauca 'Freefall'



Ficinia nodosa



Juncus patens



Lomandra longifolia 'Nyalla'



Pittosporum tobria 'Miss Muffet'



Scaevola albida 'White Carpet'

10-19 Master Plant Schedule by distinctive (Setion 4.55)									
Code	Genus	species	Hybrids/Cultivars	Common Name	Pot Size	Height	Width	Spacing	Qty
<b>Trees</b>									
Ba my	Backhousia	myrtifolia		Grey Myrtle	75L	3	3	As Shown	2
Ba in	Banksia	integrifolia		Coastal Banksia	100L	12	8	As Shown	16
Br ru	Brachychiton	rupestris		Queensland Bottle Tree	100L	5	3	As Shown	1
Cu an	Cupaniopsis	anacardioides		Tuckeroo	100L	10	8	As Shown	7
El eu	Elaeocarpus	eumundii		Quondong	75L	8	5	As Shown	7
Eu Ro	Eucalyptus	leucocylon	'Rosea'	Red Flowering Yellow Gum	75L	12	6	As Shown	1
Fi ob	Ficus	obliqua		Small Leaved Fig	75L	40	40	As Shown	2
Gl fe	Glochidion	fernandii		Cheese Tree	75L	7	5	As Shown	16
Li au	Livistona	australis		Cabbage Tree Palm	4m clear trunk	20	4	As Shown	26
Me st	Melaleuca	stypheoides		Paperbark	75L	5	5	As Shown	6
To ci	Toona	ciliata		Australian Red Cedar	75L	20	10	As Shown	10
Tr Lu	Tristaniopsis	laurina	'Luscious'	Luscious Water Gum	75L	10	5	As Shown	19
<b>Shrubs</b>									
Ac Mi	Acmena	smithii	'Minor'	Lillypilly	200mm	3	2	As Shown	61
As BN	Asplenium	australicum	'Birds Nest'	Birds Nest Fern	300mm	1.5	2	As Shown	26
Be yu	Beschermeria	yuccoides		Mexican Lily	200mm	1	1.5	As Shown	226
Bl nu	Blechnum	nudum		Fishbone Waterfern	140mm	1	1	As Shown	361
Co re	Correa	reflexa		Native Fuchsia	200mm	2	2	As Shown	125
Di LJ	Dianella	caerulea	'Little Jess'	Little Jess Paroo Lily	140mm	0.4	0.4	5/m2	2240
Do as	Doodia	aspera		Prickly Rasp Fern	200mm	0.4	0.4	4/m2	381
Do ex	Doryanthes	exelsa		Gynea Lily	45L	2	1.5	As shown	166
Do pa	Doryanthes	palmeri		Gynea Lily	45L	2.5	3	As shown	15
Er ni	Eremophila	nivea		Silky Eremophila	140mm	1.5	1.5	As shown	9
Gr ml	Grevillea		'Moon Light'	Moonlight Grevillea	200mm	5	2	As Shown	6
Ma co	Macrozamia	communis		Burrawang	300mm	2	2	As Shown	6
Ph Xa	Philodendron		'Xanadu'	Xanadu	200mm	0.8	0.8	3/m3	192
Rh SM	Rhaphiolepis	indica	'Snow Maiden'	Snow Maiden Indian Hawthorn	200mm	0.8	0.8	As Shown	309
Sa ch	Santolina	chamaecyparis		Clipped Ball	200mm	0.6	0.6	As Shown	61
Sy Bl	Syzygium	australe	'Blaze'	Blaze Lilly Pilly	200mm	1.5	1.25	As shown	240
Sy Ca	Syzygium	australe	Cascade	Lilly Pilly	200mm	3	2	As Shown	51
We fr	Westringia	fruticosa	'Grey Box'	Coastal Rosemary	200mm	0.4	0.4	300mm centres	1580
<b>Groundcovers</b>									
Ca ro	Carpobrotus	rossii		Pigface	200mm	0.4	3	2/m2	1365
Ca FF	Casuarina	glauca	'Free Fall'	Prostrate Sheoak	200mm	0.6	3	2/m2	1487
Ci an	Cissus	antarctica		Kangaroo Vine	200mm	3	5	As shown	284
Fi no	Ficinia	nodosa		Knobby Clubbrush	200mm	0.6	0.4	5/m2	1854
He pe	Helichrysum	petiolare	'Licorice'	Licorice plant	200mm	0.5	1	2/m2	1346
Ju us	Juncus	patens		Tussock Rush	200mm	1	1	2/m2	1052
Lo Ny	Lomandra	longifolia	'Nyalla'	Blue Lomandra	200mm	0.8	0.8	4/m2	112
Lo Ta	Lomandra	longifolia	'Tanika'	Dwarf Lomandra	200mm	0.6	0.5	5/m2	478
Sc WC	Scaevola	albida	'White Carpet'	Fan Flower	200mm	0.1	1.5m	3/m2	721
Se se	Senecio	serpens		Blue Chalk Sticks	200mm	0.2	0.5	5/m2	2616
We fr	Westringia	fruticosa	'Grey Box'	Coastal Rosemary	200mm	0.4	0.4	300mm centres	1194

NOTE: Proposed planting species have been carefully considered and selected that are native/ local indigenous species. This is in order to reflect the local landscape characteristic of Gosford area and Rumbalara bushland. The grey out species forms part of the original DA documentation, not part of the Section 4.55 application.

#### PROTECTION OF EXISTING TREES

Existing trees are to be protected and maintained during the course of construction. The contractor is to abide by council regulations relating to any trees nominated in DA approval, which will require all on-site trees to be provided with a 1800mm high fully supported chainmesh to minimise disturbance to existing ground conditions within the canopy drip line for the duration of construction works. "Tree Protection Zone" is to be attached to the protective fence.

#### GARDEN BEDS

Cultivate to a depth of 300mm so that soil can be worked freely. Apply gypsum at manufacturer's rates to add in de-compaction of site and breakdown of clay colloids. Spread premium blend garden bed mix to a depth of 300mm, when settled. Back filling shall be tapered progressively to match existing soil compaction, to avoid later subsidence. Mound all garden beds to centre. Allow for depth of mulch to finished levels when installing soil mix. Refer to Garden Bed Preparation Detail.

#### PLANTS

All plants which have been declared, pursuant to section 7 & 8 of the Noxious Weed Act 1993, to be Noxious Weeds within the area of Central Coast Council shall be removed on site and replaced with appropriate indigenous or native species.

All labels are to remain on plants and delivery receipts or copies of plant purchases, stating the species, amount, and container sizes of plants, shall be made available to Council's Construction Services or Private Certifier to facilitate certification that the landscape plan and conditions of consent have been implemented.

#### LAWN AREAS

Cultivate to a depth of 150mm, so that soil can be worked freely. Apply Gypsum at manufacturer's rates to add in de-compaction of site and breakdown of clay colloids. Spread 100mm layer of sandy loam topsoil blend. Rake over to form a smooth, even surface ready for lawn installation. New turf to all areas to be Soft leaf buffalo. Lay with staggered and close-butted joints along contours, to prepared surface. Water immediately, top dress once established. Refer to Turf detail & Turf on podium detail

#### MULCH

Mulch shall be ANL 'Forest Blend' or similar, which is best suited to the plant type and clients needs. Variation from this can only be made with consultation with the project manager. Mulch shall be free of soil, weed growth or any other foreign matter. Spread mulch evenly to a depth of 75mm over all garden beds. Rake over mulch surface to create an even finish.

#### GRAVEL

Gravel to be placed in designated areas as shown on plan. Install ANL Deco Gold at 100mm Maximum depth. Rake surface evenly to spread gravel.

#### IRRIGATION DESIGN & INSTALLATION

Description: Fully Automated Irrigation system

Product: To be approved prior to installation  
Turf: automated pop up irrigation system  
Garden Beds: automated drip irrigation system

Performance: Ability to effectively irrigate nominated areas.

Location: To all Turf, planter box, and Garden Bed areas

Installation: Contractor to supply detailed Irrigation plan and specification for approval by Superintendent before commencement of irrigation works

Install to Irrigation consultant and Manufacturers details  
Ensure electrical source is available at location provided by builder for operation of automatic system

Supplier: Specialist subcontractor (to be nominated)

#### DESIGN & INSTALLATION

The work is to be provided by an experienced, reputable and approved Landscape Irrigation Contractor. The Contractor shall be responsible for determining connection, electrical and potable water supply from external points of the building, as provided by the building contractor. Provision of zones with additional stations for future additions as required to be provided by contractor. Minimum 1 additional station per zone. Refer to the superintendent for instruction. Irrigation Contractor to shed. Remote control option to be provided. Valve Boxes to be located in garden beds.

The Communal open space areas and all planter boxes on slab must be provided with water-efficient irrigation system, connected to a pump and the rainwater tank, to enable effective landscape maintenance.

Programming:  
Irrigation design to ensure system is programmed on staged cycles to ensure loading capacity is not exceeded for the specified pumps and hydraulic design. Refer to engineer's design and specification for details. The contractor / designer must co-ordinate with the engineer.

MATRIX 1 - MASSED PLANTING TO SHADE AREA - RATIO 1:1:1							
Code	Genus	Species	Hybrids/Cultivars	Common name	Pot size	Spacing	Percentage
Bl nu	Blechnum	nudum	-	Fishbone Waterfern	200mm	2/m2	33.33%
Do as	Doodia	aspera	-	Prickly Rasp Fern	200mm	4/m2	33.33%
Lo Ta	Lomandra	longifolia	'Tanika'	Dwarf Lomandra	200mm	5/m2	33.33%
MATRIX 2 - MASSED PLANTING - RATIO 1:1:1:1							
Code	Genus	Species	Hybrids/Cultivars	Common name	Pot size	Spacing	Percentage
Ca FF	Casuarina	glauca	'Free Fall'	Prostrate Sheoak	200mm	2/m2	25%
Fi no	Ficinia	nodosa	-	Knobby Clubbrush	200mm	5/m2	25%
Ju us	Juncus	patens	-	Tussock Rush	200mm	2/m2	25%
Lo Ny	Lomandra	longifolia	'Nyalla'	Blue Lomandra	200mm	4/m2	25%
MATRIX 3 - MASSED PLANTING - RATIO 1:1:1:1							
Code	Genus	Species	Hybrids/Cultivars	Common name	Pot size	Spacing	Percentage
Ca FF	Casuarina	glauca	'Free Fall'	Prostrate Sheoak	200mm	2/m2	25%
Ca ro	Carpobrotus	rossii	-	Pigface	200mm	2/m2	25%
We fr	Westringia	fruticosa	'Grey Box'	Coastal Rosemary	200mm	2/m2	25%
Sc WC	Scaevola	albida	'White Carpet'	Fan Flower	200mm	3/m2	25%
MATRIX 4 - MASSED PLANTING - RATIO 1:1:1:1							
Code	Genus	Species	Hybrids/Cultivars	Common name	Pot size	Spacing	Percentage
Ca FF	Casuarina	glauca	'Free Fall'	Prostrate Sheoak	200mm	2/m2	25%
He pe	Helichrysum	petiolare	'Licorice'	Licorice plant	200mm	2/m2	25%
We fr	Westringia	fruticosa	'Grey Box'	Coastal Rosemary	200mm	2/m2	25%
Se se	Senecio	serpens	-	Blue Chalk Sticks	200mm	5/m2	25%
MATRIX 5 - MASSED PLANTING - RATIO 1:1:1:1							
Code	Genus	Species	Hybrids/Cultivars	Common name	Pot size	Spacing	Percentage
Di LJ	Dianella	caerulea	'Little Jess'	Little Jess Paroo Lily	200mm	5/m2	25%
Fi no	Ficinia	nodosa	-	Knobby Clubbrush	200mm	5/m2	25%
Ju us	Juncus	patens	-	Tussock Rush	200mm	2/m2	25%
Ca ro	Carpobrotus	rossii	-	Pigface	200mm	2/m2	25%
MATRIX 6 (PLANTERS - SUN) - MASSED PLANTING - RATIO 1:1:1:1							
Code	Genus	Species	Hybrids/Cultivars	Common name	Pot size	Spacing	Percentage
He pe	Helichrysum	petiolare	'Licorice'	Licorice Plant	200mm	2/m2	20%
We fr	Westringia	fruticosa	'Grey Box'	Coastal Rosemary	200mm	2/m2	20%
Ju us	Juncus	patens	-	Tussock Rush	200mm	2/m2	20%
Se se	Senecio	serpens	-	Blue Chalk Sticks	200mm	5/m2	20%
Ca ro	Carpobrotus	rossii	-	Pigface	200mm	2/m2	20%
MATRIX 7 (PLANTERS - SHADE) - MASSED PLANTING - RATIO 1:1:1:1							
Code	Genus	Species	Hybrids/Cultivars	Common name	Pot size	Spacing	Percentage
We fr	Westringia	fruticosa	'Grey Box'	Coastal Rosemary	200mm	2/m2	20%
He pe	Helichrysum	petiolare	'Licorice'	Licorice Plant	200mm	2/m2	20%
Ca FF	Casuarina	glauca	'Free Fall'	Prostrate SheOak	200mm	1/m2	20%
Di LJ	Dianella	caerulea	'Little Jess'	Little Jess Paroo Lily	200mm	5/m2	20%
Sc WC	Scaevola	albida	'White Carpet'	Fan Flower	200mm	3/m2	20%

#### Taps:

To be connected to proposed stormwater harvesting storage tanks, or town water mains as indicated on the engineers plans

#### Conduits:

All conduits are the responsibility of the Builder. Conduits are to be placed in the locations as required in accordance with future installation of irrigation control lines to the irrigation designer's details. Ensure that these conduits are supplied with a draw cord and remain clearly marked throughout construction.

#### Approvals

Obtain all necessary approvals from relevant authorities. The Landscape Contractor is also responsible for complying with the requirements of all authorities connected with the works.

#### Standards and Authorities

All workmanship and materials must conform to the relevant Australian Standards and all Water Board requirements.

#### Co-ordination of Services

The Landscape Contractor shall be responsible for the co-ordination of the irrigation systems with other services throughout the site.

Bore connection and rainwater tank connections to be confirmed and coordinated. Connection to above ground water tanks to be incorporated.

#### Guarantees and Warranties

Relating to the installation and products are to be handed to the Superintendent on completion of the works.

#### Works as Executed Drawing

Provide complete dimension drawings, based on the approved design plan, of the entire irrigation system as executed, clearly indicating the type and location of all irrigation fixtures. Hand the WAE Drawings to the Superintendent upon completion of the works.

#### COMPLETION AND MAINTENANCE

Upon completion, the Landscape Contractor is to run through system to ensure system is operating correctly and instruct the client's representative in the correct operation and maintenance of the system. All instructions are to be typed. Manuals, warranties, and a minimum of two programs, summer and winter to be provided to the Landscape Architect and the client's representative at the time of completion. The Landscape Contractor is to maintain the correct operation of the system for a minimum of 12 weeks after completion

#### MAINTENANCE SCHEDULE

The consolidation program shall include, but not limited to, the following items:

Routine Maintenance. Provide routine maintenance for a period of six months after practical completion. Program to include but not limited to plant establishment, watering, mowing, fertilising, weeding, staking, pruning, mulching, pest and disease control and generally maintaining the site in a neat and tidy condition.

Watering: Watering of plants and turf should be done in conjunction with current Sydney Water watering restrictions.

Fertilising: Apply an appropriate lawn fertiliser, at manufacturer's rates, after 6 weeks of installation. Ensure fertiliser is adequately watered and evenly dispersed for healthy even lawn growth.

Mulch of garden beds must adhere to Australian Standard AS4454.

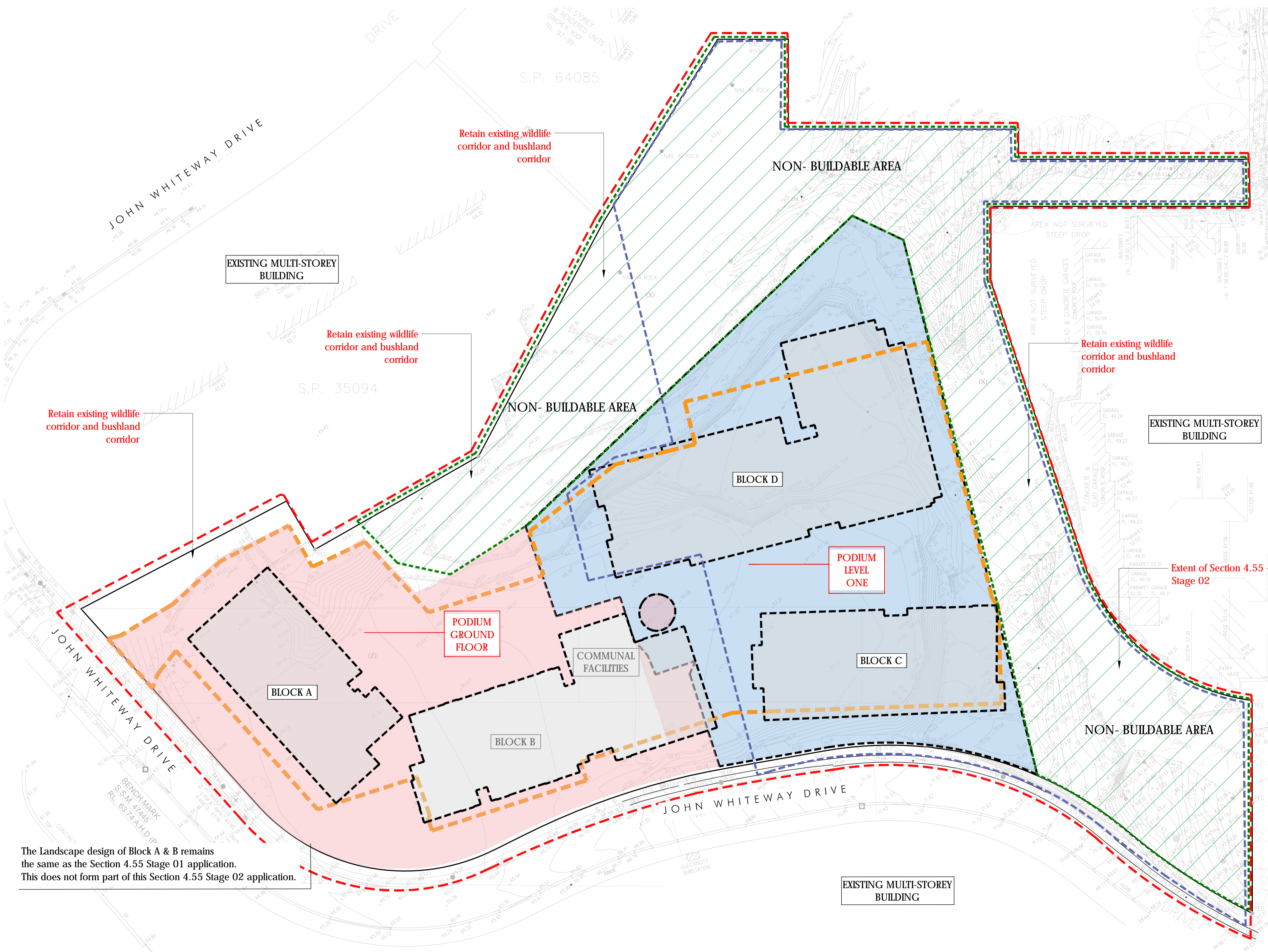
Lawns. Repair lawns in all failed areas.

Disease and Pest Control. If pathological disease or insect pests appear, they are to be controlled using organic methods or pest and disease control. Failing this, chemical sprays may be used, at manufacturer's rates, with prior consent of client.

Replacement. Defects including any dead or unhealthy plant must be replaced or treated within 3 weeks. Missing, dead or unhealthy plants are to be replaced with plants of similar size and quality and identical species/variety, unless a substitution has been approved by Council.

Any Pruning must be carried out to meet Australian Standards AS4373 'Pruning of Amenity Trees' and shall comply with Councils Tree Preservation Order.

Making Good. The contractor shall make good erosion of soil or subsidence which may occur, at no contract variation.



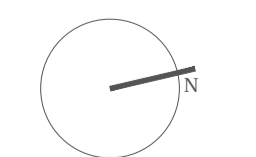
**KEY**

	GROUND FLOOR - LOWER PODIUM REFER SHEET DIRECTORY
	LEVEL ONE - UPPER PODIUM REFER SHEET DIRECTORY
	EXTENT OF WORKS: DA
	EXTENT OF WORKS SECTION 4.55 Stage 02
	EXTENT OF PODIUM
	APZ SETBACK
	NON-BUILDABLE ZONE

The Landscape design of Block A & B remains the same as the Section 4.55 Stage 01 application. This does not form part of this Section 4.55 Stage 02 application.

**distinctive Living Design**  
Landscape & Interior Architecture - Design - Consultancy  
114 Argyle Street,  
Camden NSW 2570  
T +61 2 4655 1881  
admin@distinctive.net.au  
www.distinctive.net.au  
Distinctive Gardens & Interiors T/A distinctive Living Design

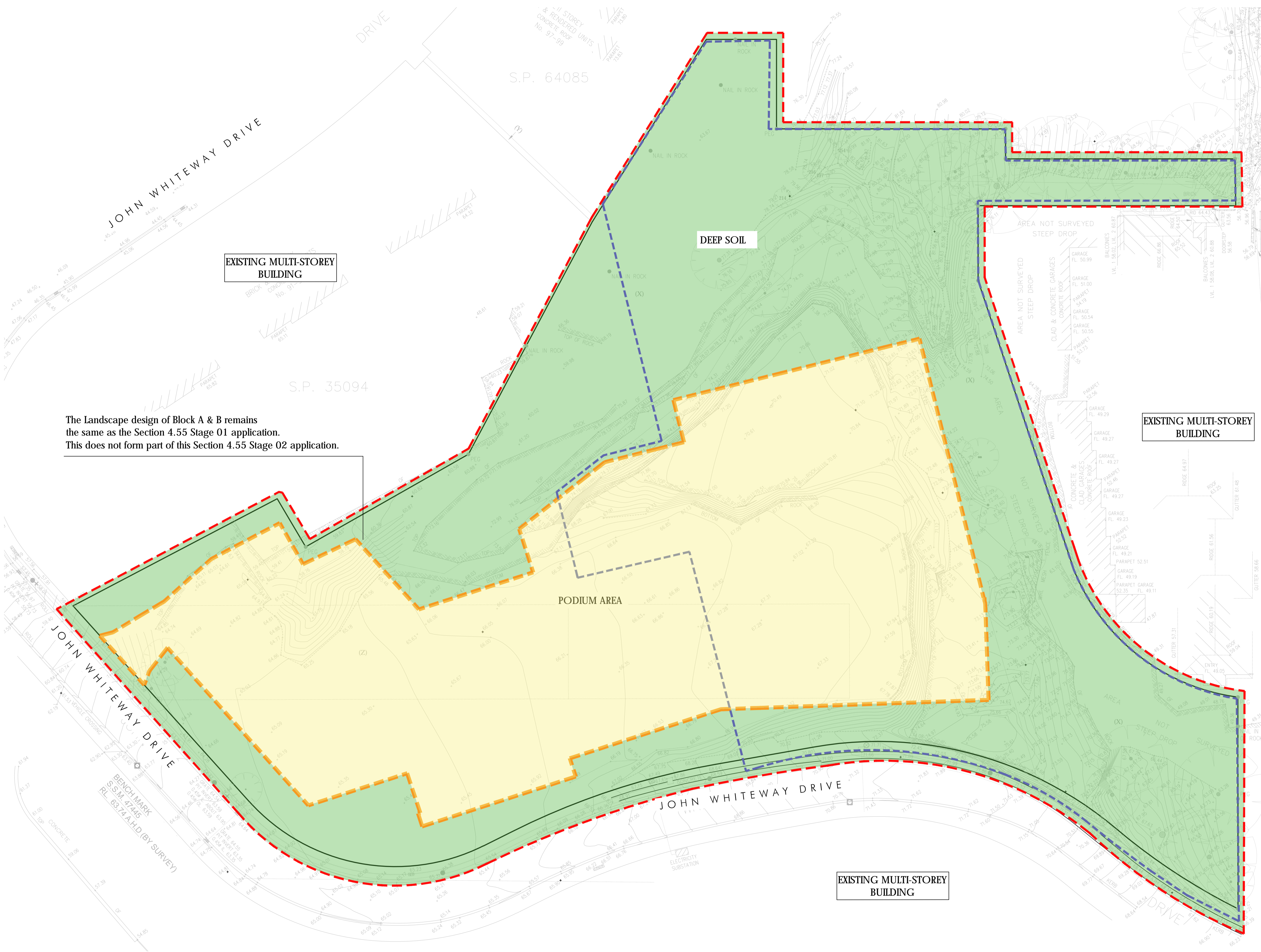
Rev:	Revision note:	Date:	Dwn by:
I	AMENDMENTS FOR DA APPROVAL	06.08.20	PG/JZ
J	AMENDMENTS FOR DA APPROVAL	07.08.20	PG/JZ
K	AMENDMENTS FOR DA APPROVAL	21.08.20	IJ
L	AMENDMENTS FOR DA APPROVAL	14.09.20	PG
M	AMENDMENTS FOR DA APPROVAL	19.10.20	JG/JZ
N	AMENDMENTS FOR DA APPROVAL	11.02.21	IJ
O	AMENDMENTS FOR DA APPROVAL	27.05.21	PG/JZ
P	AMENDMENTS FOR DA APPROVAL	10.08.21	IJ
Q	FOR SECTION 4.55 APPROVAL	16.11.21	IJ
R	FOR SECTION 4.55 APPROVAL	18.01.22	PG/JZ
S	FOR SECTION 4.55 APPROVAL	15.02.22	CX



Project Title:  
**John Whiteway Drive Development Gosford - S4.55 Stage 02**  
Project Address:  
**89 John Whiteway Drive, Gosford**  
Drawing Title:  
**DIRECTORY PLAN**  
Location of all services is to be carried out by all contractors prior to commencement of works. Phone Dial-Before-You-Dig Ph: 1 100. Refer plans by Architects, Engineers & Surveyors for other working drawings. Information on Distinctive plans is for reference & coordination only. This drawings are to be read in conjunction with prepared specifications & details. It is the responsibility of the contractor to notify Distinctive of any contradiction within the plans & receive appropriate direction prior to construction works. Final layout is to be determined on the spot at the direction of the site supervisor. Plans are copyright to Distinctive Gardens & Interiors Pty Ltd.

Scale @ A1/A3: <b>1:400/ 1:800</b>	Client: JWD Developments Pty Ltd
Drawing Date: <b>15.02.2022</b>	Drawn/Checked: CX/IJ/PG/MS/DB
Project Number: 10-19	Drawing Number: 10-19.13
	Issue: S





The Landscape design of Block A & B remains the same as the Section 4.55 Stage 01 application. This does not form part of this Section 4.55 Stage 02 application.

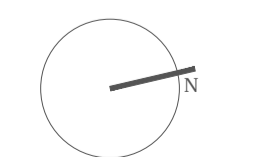
KEY	
	PODIUM AREA
	DEEP SOIL ZONE
	EXTENT OF WORKS:DA
	EXTENT OF WORKS SECTION 4.55 - STAGE 02
	EXTENT OF PODIUM
	APZ SETBACK

DEEP SOIL PERCENTAGE CALCULATION	
Total site area:	22315 m2
Total deep soil area:	12501 m2
Deep soil percentage:	54.5%

**distinctive Living Design**  
 Landscape & Interior Architecture - Design - Consultancy  
 114 Argyle Street,  
 Camden NSW 2570  
 T +61 2 4655 1881  
 admin@distinctive.net.au  
 www.distinctive.net.au  
 Distinctive Gardens & Interiors T/A distinctive Living Design

Rev.	Revision note:	Date:	Dwn by:
I	AMENDMENTS FOR DA APPROVAL	06.08.20	PG/IZ
J	AMENDMENTS FOR DA APPROVAL	07.08.20	PG/IZ
K	AMENDMENTS FOR DA APPROVAL	21.08.20	IZ
L	AMENDMENTS FOR DA APPROVAL	14.09.20	PG
M	AMENDMENTS FOR DA APPROVAL	19.10.20	JG/IZ
N	AMENDMENTS FOR DA APPROVAL	11.02.21	IZ
O	AMENDMENTS FOR DA APPROVAL	27.05.21	PG/IZ
P	AMENDMENTS FOR DA APPROVAL	10.08.21	IZ
Q	FOR SECTION 4.55 APPROVAL	16.11.21	IZ
R	FOR SECTION 4.55 APPROVAL	18.01.22	PG/IZ
S	FOR SECTION 4.55 APPROVAL	15.02.22	CX



Project Title:  
**John Whiteway Drive Development Gosford - S4.55 Stage 02**  
 Project Address:  
**89 John Whiteway Drive, Gosford**  
 Drawing Title:  
**SITE DEEP SOIL PLAN**  
 Location of all services is to be carried out by all contractors prior to commencement of works. Please Dial-Before-You-Dig Ph: 1 100. Refer plans by Architects, Engineers & Surveyors for other working drawings. Information on Distinctive plans is for reference & coordination only. This drawings are to be read in conjunction with prepared specifications & details. It is the responsibility of the contractor to notify Distinctive of any contradiction within the plans & receive appropriate direction prior to construction works. Final layout is to be determined on the spot at the direction of the site supervisor. Plans are copyright to Distinctive Gardens & Interiors Pty Ltd.

Scale @ A1/A3: <b>1:400/ 1:800</b>	Client: JWD Developments Pty Ltd
Drawing Date: <b>15.02.2022</b>	Drawn/Checked CX/IZ/PG/MS/DB
Project Number: 10-19	Drawing Number: 10-19.14
	Issue: S





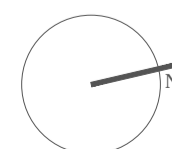
The Landscape design of Block A & B remains the same as the Section 4.55 Stage 01 application. This does not form part of this Section 4.55 Stage 02 application.

### LEGEND

- - - EXTENT OF SITE
- - - EXTENT OF PROPOSED DEVELOPMENT SITE
- - - EXTENT OF WORKS: SECTION 4.55
- TREES TO BE REMOVED WITHIN DEVELOPMENT SITE CANOPY COVERAGE
- PROPOSED TREES WITHIN DEVELOPMENT SITE CANOPY COVERAGE

**DAP COMMENT ADDRESSED:**  
**Biodiversity**  
 The Department requests that the proposal be reviewed and revised to retain more of these trees and an appropriate tree planting strategy be provided, to compensate the necessary loss of trees.

Rev:	Revision note:	Date:	Dwn by:
I	AMENDMENTS FOR DA APPROVAL	06.08.20	PG/IZ
J	AMENDMENTS FOR DA APPROVAL	07.08.20	PG/IZ
K	AMENDMENTS FOR DA APPROVAL	21.08.20	IZ
L	AMENDMENTS FOR DA APPROVAL	14.09.20	PG
M	AMENDMENTS FOR DA APPROVAL	19.10.20	JG/IZ
N	AMENDMENTS FOR DA APPROVAL	11.02.21	IZ
O	AMENDMENTS FOR DA APPROVAL	27.05.21	PG/IZ
P	AMENDMENTS FOR DA APPROVAL	10.08.21	IZ
Q	FOR SECTION 4.55 APPROVAL	16.11.21	IZ
R	FOR SECTION 4.55 APPROVAL	18.01.22	PG/IZ
S	FOR SECTION 4.55 APPROVAL	15.02.22	CX





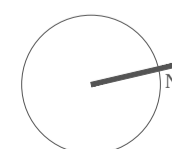
**LEGEND**

- EXENT OF SITE
- EXENT OF PROPOSED DEVELOPMENT SITE
- EXENT OF WORKS: SECTION 4.55 STAGE 02
- PROPOSED TREES WITHIN DEVELOPMENT SITE CANOPY COVERAGE
- EXISTING TREES IN WILDLIFE CORRIDOR TO BE RETAINED CANOPY COVERAGE
- PROPOSED TREES IN WILDLIFE CORRIDOR (DBH > 45cm) CANOPY COVERAGE
- PROPOSED TREES IN WILDLIFE CORRIDOR (DBH 15-45cm) CANOPY COVERAGE
- PROPOSED TREES WITHIN WILDLIFE CORRIDOR (DBH < 15cm) CANOPY COVERAGE
- VEGETATION RETENTION & RESTORATION AREA
- EXTENTS OF ROCKY OUTCROP (NO PLANTING)

**DAP COMMENT ADDRESSED:**

Prepare comprehensive Canopy Plan, which combines the VMP, Tree Retention & Canopy Cover Plan, and the Landscape Plans (Site Canopy Coverage Plan). Cover the entire area from north to south along the Western Boundary.

Rev:	Revision note:	Date:	Dwn by:
I	AMENDMENTS FOR DA APPROVAL	06.08.20	PG/LZ
J	AMENDMENTS FOR DA APPROVAL	07.08.20	PG/LZ
K	AMENDMENTS FOR DA APPROVAL	21.08.20	IZ
L	AMENDMENTS FOR DA APPROVAL	14.09.20	PG
M	AMENDMENTS FOR DA APPROVAL	19.10.20	JG/LZ
N	AMENDMENTS FOR DA APPROVAL	11.02.21	IZ
O	AMENDMENTS FOR DA APPROVAL	27.05.21	PG/LZ
P	AMENDMENTS FOR DA APPROVAL	10.08.21	IZ
Q	FOR SECTION 4.55 APPROVAL	16.11.21	IZ
R	FOR SECTION 4.55 APPROVAL	18.01.22	PG/LZ
S	FOR SECTION 4.55 APPROVAL	15.02.22	CX





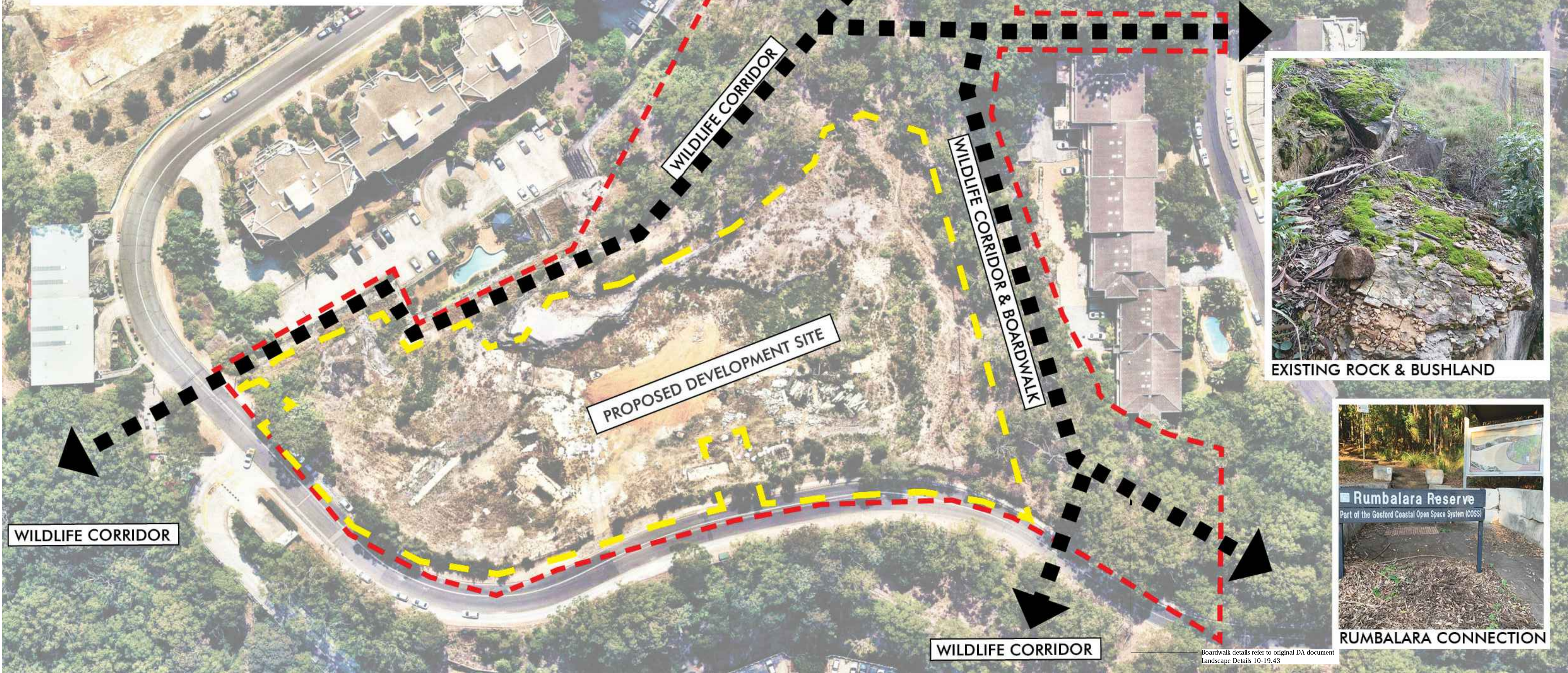
PROPOSED DEVELOPMENT AREA



WILDLIFE CORRIDOR



PROPOSED DEVELOPMENT AREA



EXISTING ROCK & BUSHLAND

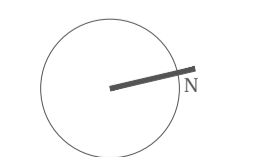


RUMBALARA CONNECTION

Boardwalk details refer to original DA document Landscape Details 10-19.43

**distinctive Living Design**  
 Landscape & Interior Architecture - Design - Consultancy  
 114 Argyle Street,  
 Camden NSW 2570  
 T +61 2 4655 1881  
 admin@distinctive.net.au  
 www.distinctive.net.au  
 Distinctive Gardens & Interiors T/A distinctive Living Design

Rev:	Revision note:	Date:	Dwn by:
I	AMENDMENTS FOR DA APPROVAL	06.08.20	PG/LZ
J	AMENDMENTS FOR DA APPROVAL	07.08.20	PG/LZ
K	AMENDMENTS FOR DA APPROVAL	21.08.20	IZ
L	AMENDMENTS FOR DA APPROVAL	14.09.20	PG
M	AMENDMENTS FOR DA APPROVAL	19.10.20	JG/LZ
N	AMENDMENTS FOR DA APPROVAL	11.02.21	IZ
O	AMENDMENTS FOR DA APPROVAL	27.05.21	PG/LZ
P	AMENDMENTS FOR DA APPROVAL	10.08.21	IZ
Q	FOR SECTION 4.55 APPROVAL	16.11.21	IZ
R	FOR SECTION 4.55 APPROVAL	18.01.22	PG/LZ
S	FOR SECTION 4.55 APPROVAL	15.02.22	CX



Project Title:  
**John Whiteway Drive Development Gosford - S4.55 Stage 02**  
 Project Address:  
**89 John Whiteway Drive, Gosford**  
 Drawing Title:  
**WILDLIFE CORRIDOR AND BOARDWALK PLAN**  
 Location of all services is to be carried out by all contractors prior to commencement of works. Please Detail-Before-You-Dig Ph: 1100. Refer plans by Architects, Engineers & Surveyors for other working drawings. Information on Distinctive plans is for reference & coordination only. This drawings are to be read in conjunction with prepared specifications & details. It is the responsibility of the contractor to notify Distinctive of any contradiction within the plans & receive appropriate direction prior to construction works. Final layout is to be determined on the spot and at the direction of the site supervisor. Plans are copyright to Distinctive Gardens & Interiors Pty Ltd.

Scale @ A1/A3: NTS	Client: JWD Developments Pty Ltd
Drawing Date: 15.02.2022	Drawn/Checked: CX/LZ/PG/MS/DB
Project Number: 10-19	Drawing Number: 10-19.17
	Issue: S





SENSE OF COMMUNITY



CONNECTION TO RUMBALARA



COMMUNAL GARDENS



DINING



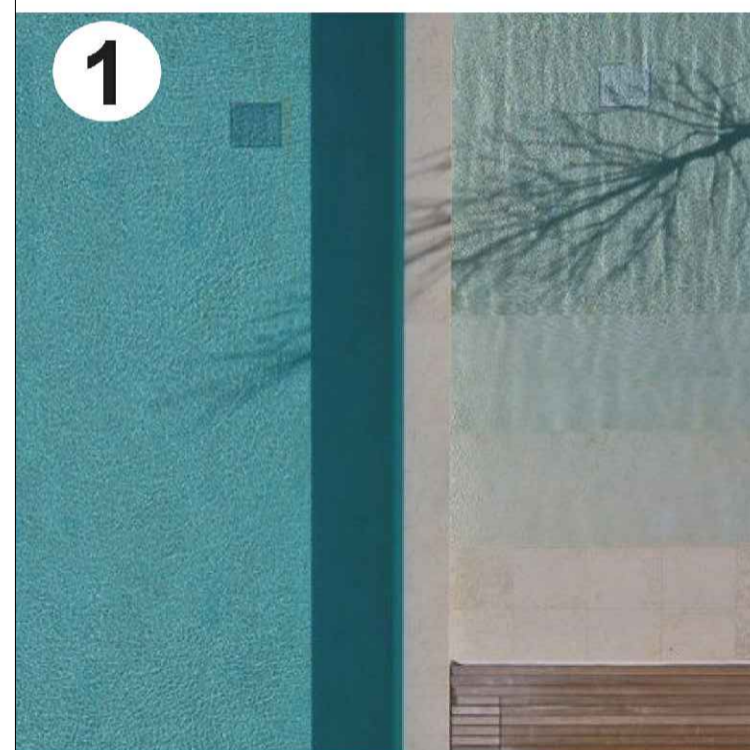
BEE KEEPING



COMMUNAL SPACES



WILDLIFE CORRIDOR



ACTIVE RECREATION

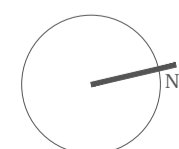


PASSIVE RECREATION



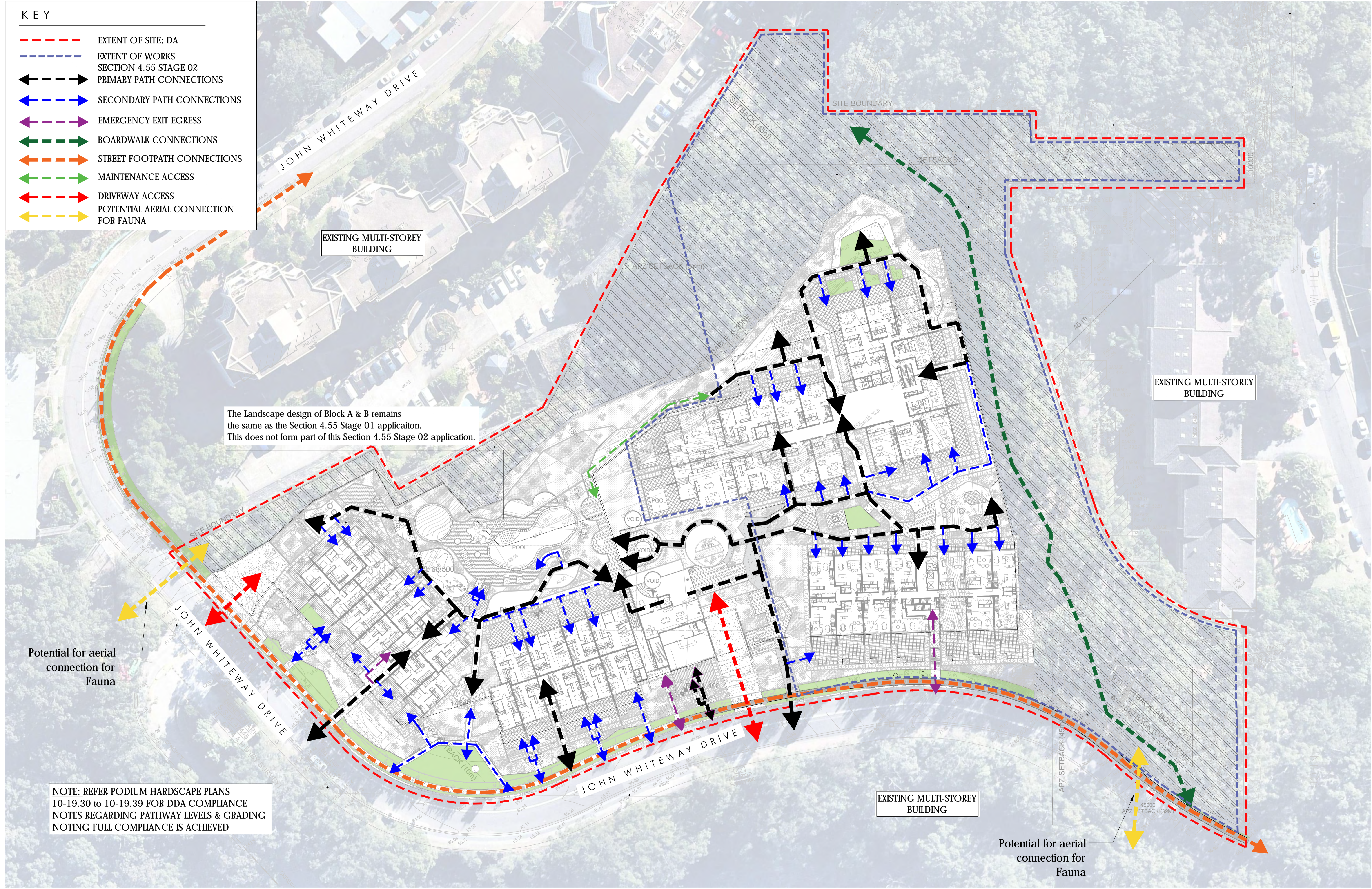
- 1 Swimming Pools
- 2 Putting Golf Greens
- 3 Bocce Courts
- 4 Connection to Rumbalara
- 5 Communal Productive Gardens
- 6 Outdoor Dining Opportunities
- 7 Bee Keeping to enhance natural habitats
- 8 Boardwalk Connection
- 9 Wildlife Corridor Bush Walk
- 10 Dynamic paths and planters
- 11 Open lawn space
- 12 Small communal gathering spaces

Rev.	Revision note	Date	Drawn by
I	AMENDMENTS FOR DA APPROVAL	06.08.20	PG/LZ
J	AMENDMENTS FOR DA APPROVAL	07.08.20	PG/LZ
K	AMENDMENTS FOR DA APPROVAL	21.08.20	IZ
L	AMENDMENTS FOR DA APPROVAL	14.09.20	PG
M	AMENDMENTS FOR DA APPROVAL	19.10.20	JG/LZ
N	AMENDMENTS FOR DA APPROVAL	11.02.21	IZ
O	AMENDMENTS FOR DA APPROVAL	27.05.21	PG/LZ
P	AMENDMENTS FOR DA APPROVAL	10.08.21	IZ
Q	FOR SECTION 4.55 APPROVAL	16.11.21	IZ
R	FOR SECTION 4.55 APPROVAL	18.01.22	PG/LZ
S	FOR SECTION 4.55 APPROVAL	15.02.22	CX



**KEY**

- - - EXTENT OF SITE: DA
- - - EXTENT OF WORKS SECTION 4.55 STAGE 02
- ⇄ PRIMARY PATH CONNECTIONS
- ⇄ SECONDARY PATH CONNECTIONS
- ⇄ EMERGENCY EXIT EGRESS
- ⇄ BOARDWALK CONNECTIONS
- ⇄ STREET FOOTPATH CONNECTIONS
- ⇄ MAINTENANCE ACCESS
- ⇄ DRIVEWAY ACCESS
- ⇄ POTENTIAL AERIAL CONNECTION FOR FAUNA

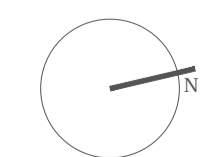


The Landscape design of Block A & B remains the same as the Section 4.55 Stage 01 application. This does not form part of this Section 4.55 Stage 02 application.

**NOTE: REFER PODIUM HARDSCAPE PLANS 10-19.30 to 10-19.39 FOR DDA COMPLIANCE NOTES REGARDING PATHWAY LEVELS & GRADING NOTING FULL COMPLIANCE IS ACHIEVED**

**distinctive Living Design**  
 Landscape & Interior Architecture - Design - Consultancy  
 114 Argyle Street,  
 Camden NSW 2570  
 T +61 2 4655 1881  
 admin@distinctive.net.au  
 www.distinctive.net.au  
Distinctive Gardens & Interiors T/A distinctive Living Design

Rev:	Revision note:	Date:	Down by:
I	AMENDMENTS FOR DA APPROVAL	06.08.20	PG/JZ
J	AMENDMENTS FOR DA APPROVAL	07.08.20	PG/JZ
K	AMENDMENTS FOR DA APPROVAL	21.08.20	IJ
L	AMENDMENTS FOR DA APPROVAL	14.09.20	PG
M	AMENDMENTS FOR DA APPROVAL	19.10.20	JG/JZ
N	AMENDMENTS FOR DA APPROVAL	11.02.21	IJ
O	AMENDMENTS FOR DA APPROVAL	27.05.21	PG/JZ
P	AMENDMENTS FOR DA APPROVAL	10.08.21	IJ
Q	FOR SECTION 4.55 APPROVAL	16.11.21	IJ
R	FOR SECTION 4.55 APPROVAL	18.01.22	PG/JZ
S	FOR SECTION 4.55 APPROVAL	15.02.22	CX

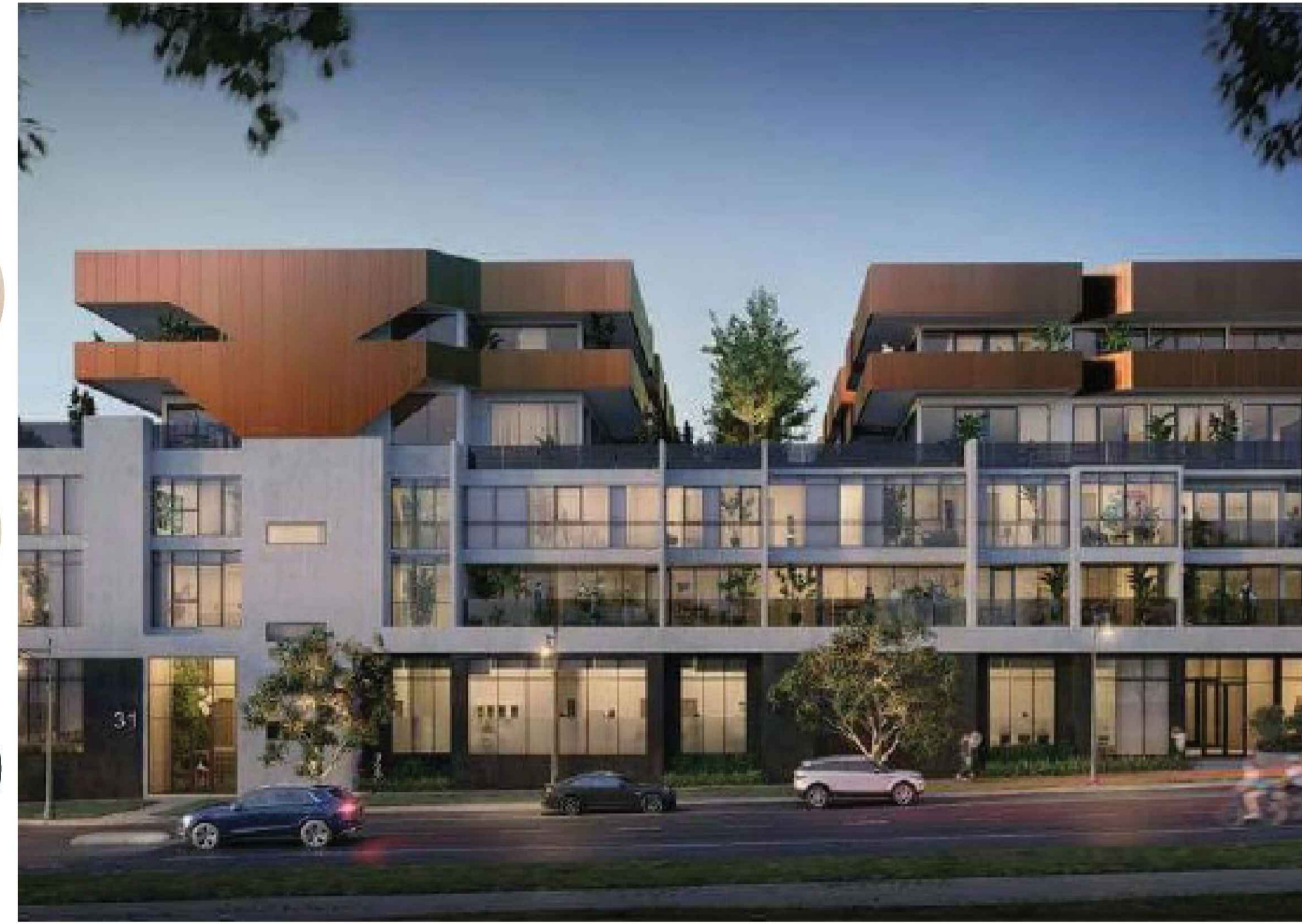
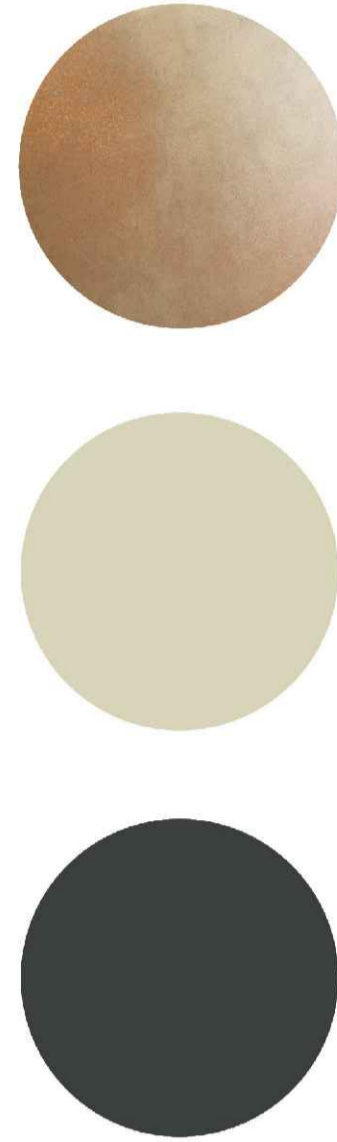


This document has been validated by Mark Santangelo  
 Registered Landscape Architect (QLD), BArch, Dip Hort  
 Verified by Dean Boone  
 DIRECTOR

**Project Title:**  
 John Whiteway Drive Development Gosford - S4.55 Stage 02  
**Project Address:**  
 89 John Whiteway Drive, Gosford  
**Drawing Title:**  
 CIRCULATION PLAN  
Location of all services is to be carried out by all contractors prior to commencement of works. Please Dial-Before-You-Dig Ph: 1 100. Refer plans by Architects, Engineers & Surveyors for other working drawings. Information on Distinctive plans is for reference & coordination only. This drawings are to be read in conjunction with prepared specifications & details. It is the responsibility of the contractor to notify Distinctive of any contradiction within the plans & receive appropriate direction prior to construction works. Final layout is to be determined on the spot at the direction of the site supervisor. Plans are copyright © Distinctive Gardens & Interiors Pty Ltd.

<b>Scale @ A1/A3:</b> 1:400/ 1:800	<b>Client:</b> JWD Developments Pty Ltd
<b>Drawing Date:</b> 15.02.2022	<b>Drawn/Checked:</b> CX/IJ/PG/MS/DB
<b>Project Number:</b> 10-19	<b>Drawing Number:</b> 10-19.19
<b>Drawing Status:</b> S4.55 S02	<b>Issue:</b> S





VARIATION IN MATERIALS TO DEFINE LAYERS

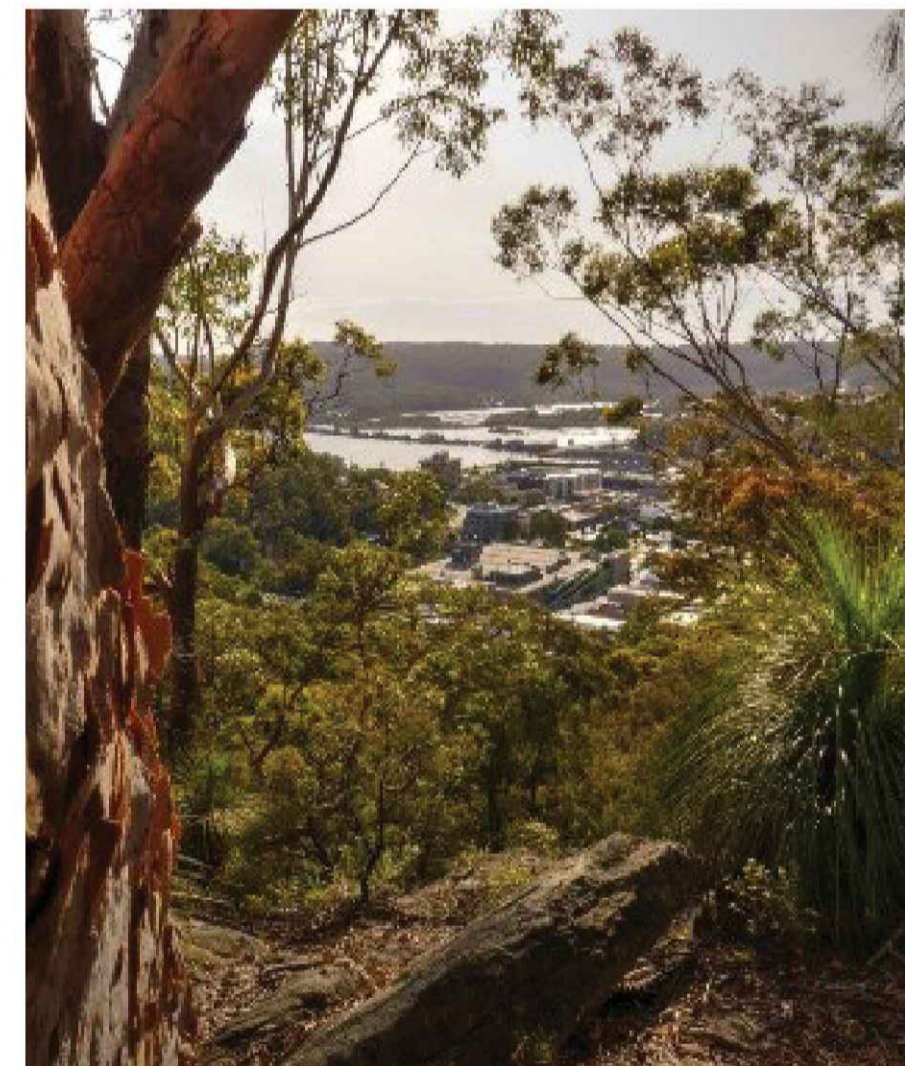
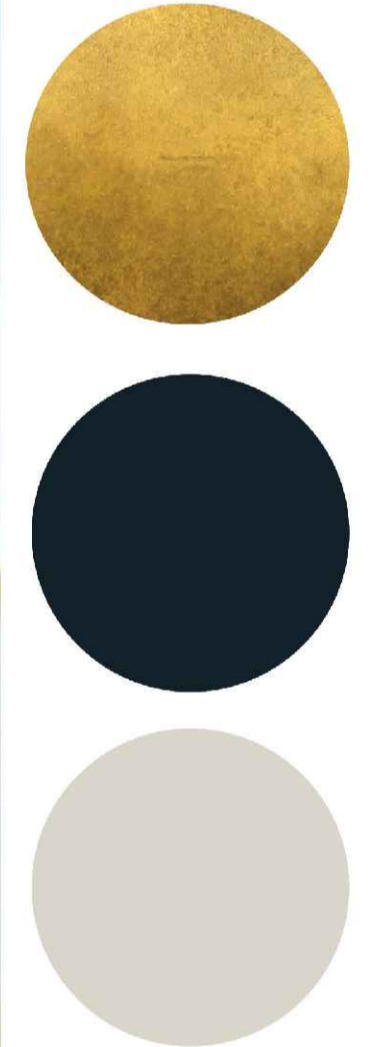
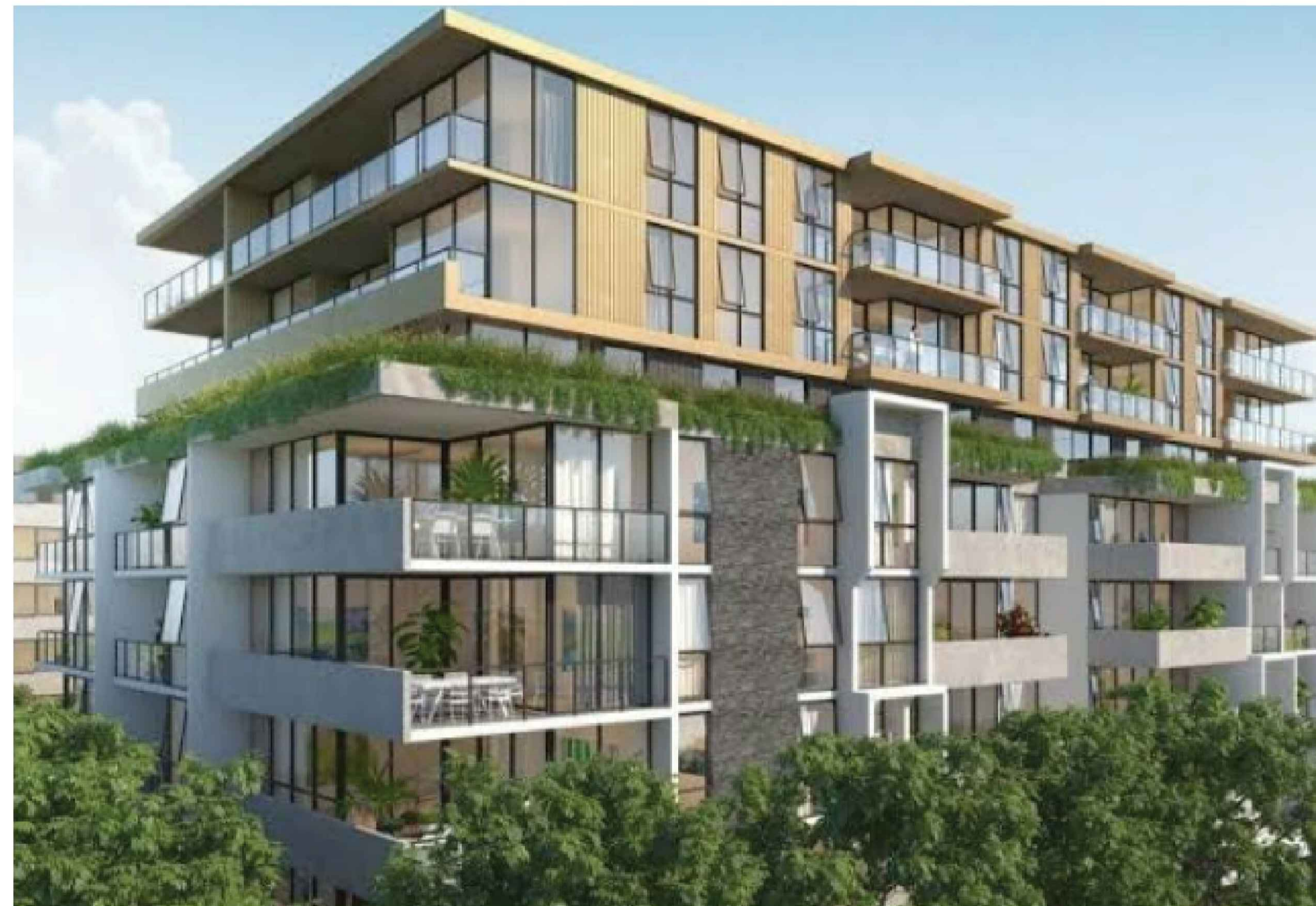


CONNECTION TO NATURE

Gosford DAP Comment Addressed:  
The Panel supports the revised building profile in the view from the waterfront (near the swimming pool) and advises the proponent to consider a colour scheme that is compatible with the environment.



CONNECTION TO VIEWS



RUMBALARA

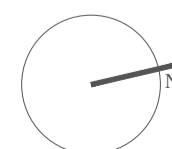


REFLECT NATURAL PATTERNS/LAYERED TONES AND FEATURES



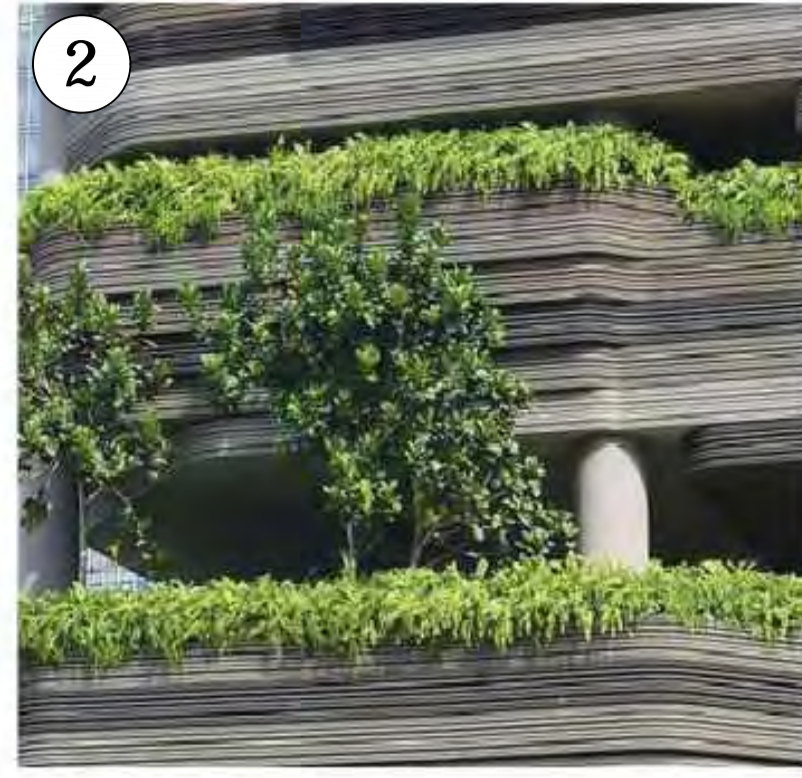
*"BUILDING ON THE TONES OF THE NATURAL ENVIRONMENT TO CREATE A UNIQUE COMPOSITION AND IDENTITY WITHIN THE BUILT FORM"*

Rev.	Revision note	Date	Drawn by
I	AMENDMENTS FOR DA APPROVAL	06.08.20	PG/LZ
J	AMENDMENTS FOR DA APPROVAL	07.08.20	PG/LZ
K	AMENDMENTS FOR DA APPROVAL	21.08.20	IZ
L	AMENDMENTS FOR DA APPROVAL	14.09.20	PG
M	AMENDMENTS FOR DA APPROVAL	19.10.20	JG/LZ
N	AMENDMENTS FOR DA APPROVAL	11.02.21	IZ
O	AMENDMENTS FOR DA APPROVAL	27.05.21	PG/LZ
P	AMENDMENTS FOR DA APPROVAL	10.08.21	IZ
Q	FOR SECTION 4.55 APPROVAL	16.11.21	IZ
R	FOR SECTION 4.55 APPROVAL	18.01.22	PG/LZ
S	FOR SECTION 4.55 APPROVAL	15.02.22	CX





1 GREEN ROOF TREATMENT



2 SPILL OVER GROUNDCOVER SPECIES



**Central Coast Council Comment Addressed:**  
29. The scale of the development is such that the developer should be encouraged to provide sustainable and green building design measure that are above that which are required as a mandatory obligation.

Rev.	Revision note	Date	Dwn by:
I	AMENDMENTS FOR DA APPROVAL	06.08.20	PG/LZ
J	AMENDMENTS FOR DA APPROVAL	07.08.20	PG/LZ
K	AMENDMENTS FOR DA APPROVAL	21.08.20	IJ
L	AMENDMENTS FOR DA APPROVAL	14.09.20	PG
M	AMENDMENTS FOR DA APPROVAL	19.10.20	JG/LZ
N	AMENDMENTS FOR DA APPROVAL	11.02.21	IJ
O	AMENDMENTS FOR DA APPROVAL	27.05.21	PG/LZ
P	AMENDMENTS FOR DA APPROVAL	10.08.21	IJ
Q	FOR SECTION 4.55 APPROVAL	16.11.21	IJ
R	FOR SECTION 4.55 APPROVAL	18.01.22	PG/LZ
S	FOR SECTION 4.55 APPROVAL	15.02.22	CX

