



LEGEND

EXTENT OF SITE

EXTENT OF PROPOSED DEVELOPMENT SITE

PROPOSED TREES WITHIN DEVELOPMENT SITE CANOPY COVERAGE

EXISTING TREES IN WILDLIFE CORRIDOR TO BE RETAINED CANOPY COVERAGE

PROPOSED TREES IN WILDLIFE CORRIDOR (DBH > 45cm) CANOPY COVERAGE

PROPOSED TREES IN WILDLIFE CORRIDOR (DBH 15-45cm) CANOPY COVERAGE

PROPOSED TREES WITHIN WILDLIFE CORRIDOR (DBH < 15cm) CANOPY COVERAGE

VEGETATION RETENTION & RESTORATION AREA

EXTENTS OF ROCKY OUTCROP (NO PLANTING)

DAP COMMENT ADDRESSED:

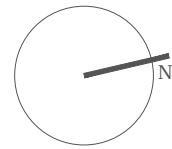
Prepare comprehensive Canopy Plan, which combines the VMP, Tree Retention & Canopy Cover Plan, and the Landscape Plans (Site Canopy Coverage Plan). Cover the entire area from north to south along the Western Boundary.

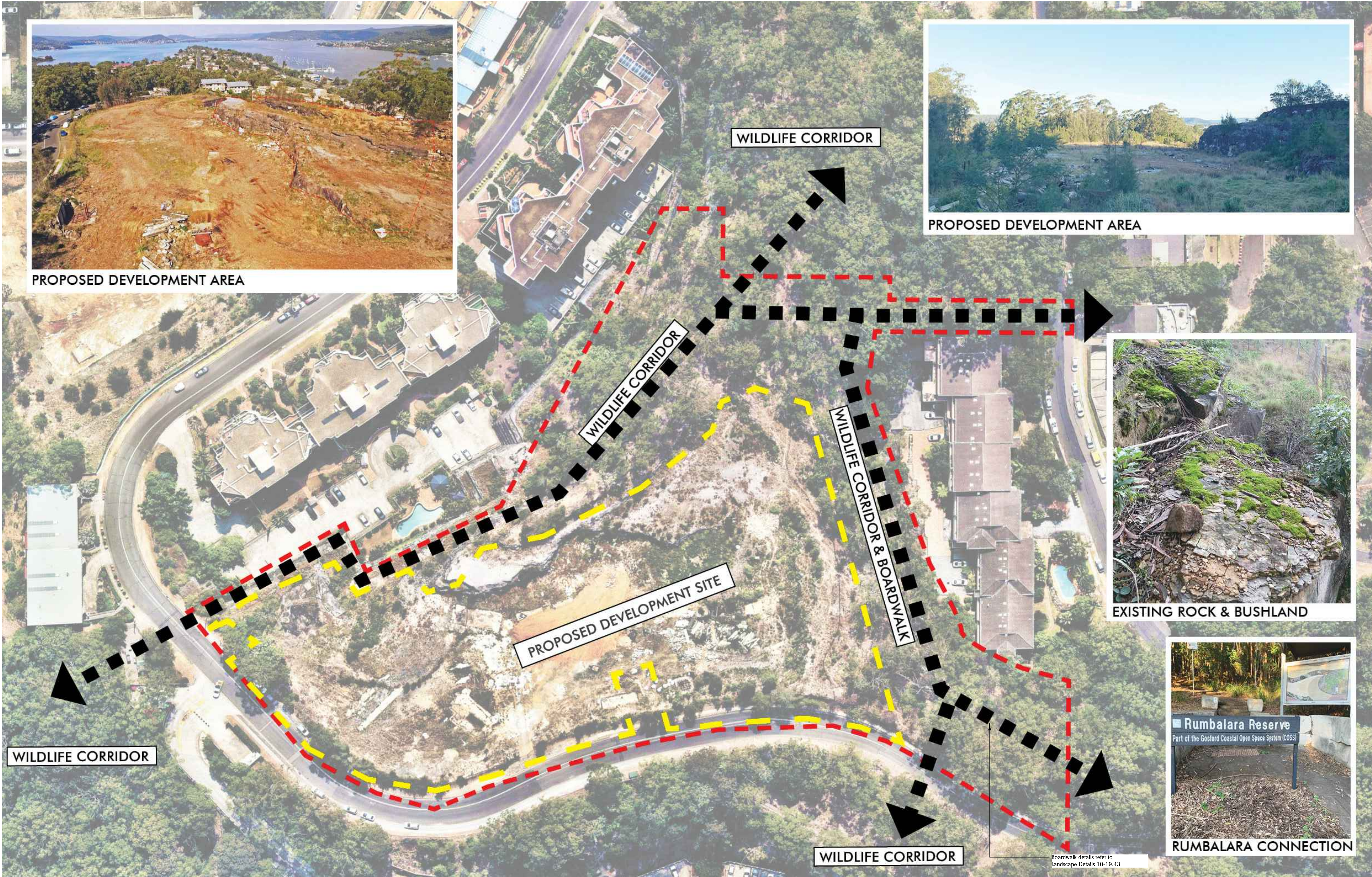


Planning,
Industry &
Environment

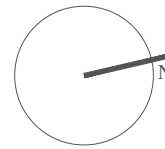
Issued under the Environmental Planning and Assessment Act 1979
Approved Application No: SSD 10321
Granted on: 14 October 2021
Signed: AW **Sheet No: 143 of 190**

Rev.	Revision note:	Date:	Dwn by:
E.	FOR DA APPROVAL	14.02.20	IJZ
F.	FOR DA APPROVAL	20.02.20	IJZ
G.	AMENDMENTS FOR DA APPROVAL	22.06.20	PG/IJZ
H.	AMENDMENTS FOR DA APPROVAL	17.07.20	PG/IJZ
I.	AMENDMENTS FOR DA APPROVAL	06.08.20	PG/IJZ
J.	AMENDMENTS FOR DA APPROVAL	07.08.20	PG/IJZ
K.	AMENDMENTS FOR DA APPROVAL	21.08.20	IJZ
L.	AMENDMENTS FOR DA APPROVAL	14.09.20	PG
M.	AMENDMENTS FOR DA APPROVAL	19.10.20	JG/IJZ
N.	AMENDMENTS FOR DA APPROVAL	11.02.21	IJZ
O.	AMENDMENTS FOR DA APPROVAL	27.05.21	PG/IJZ





Rev.	Revision note:	Date:	Dwn by:
E	FOR DA APPROVAL	14.02.20	IJ
F	FOR DA APPROVAL	20.02.20	IJ
G	AMENDMENTS FOR DA APPROVAL	22.06.20	PG/IJ
H	AMENDMENTS FOR DA APPROVAL	17.07.20	PG/IJ
I	AMENDMENTS FOR DA APPROVAL	06.08.20	PG/IJ
J	AMENDMENTS FOR DA APPROVAL	07.08.20	PG/IJ
K	AMENDMENTS FOR DA APPROVAL	21.08.20	IJ
L	AMENDMENTS FOR DA APPROVAL	14.09.20	PG
M	AMENDMENTS FOR DA APPROVAL	19.10.20	JG/IJ
N	AMENDMENTS FOR DA APPROVAL	11.02.21	IJ
O	AMENDMENTS FOR DA APPROVAL	27.05.21	PG/IJ



Planning,
Industry &
Environment

Issued under the Environmental Planning and Assessment Act 1979

Approved Application No: SSD 10321

Granted on: 14 October 2021

Signed: AW

Sheet No: 144 of 190

This document has been validated by Mark Santangelo
Registered Landscape Architect (ALA), BLArch, Dip Hort

Verified by Dean Boone
DIRECTOR

Project Title:
John Whiteway Drive JWD Development Gosford
Project Address:
89 John Whiteway Drive, Gosford
Drawing Title:
WILDLIFE CORRIDOR AND BOARDWALK PLAN

Location of all services is to be carried out by all contractors prior to commencement of works. Please Dial-Before-You-Dig Ph: 1100.
Refer plans by Architects, Engineers & Surveyors for other working drawings. Information on Distinctive plans is for reference &
co-ordination only. This drawings are to be read in conjunction with prepared specifications & details. It is the responsibility of the
contractor to notify Distinctive of any contradiction within the plans & receive appropriate direction prior to construction works. Final
layout is to be determined on site and at the direction of the site supervisor. Plans are copyright to Distinctive Gardens & Interior Pty Ltd.

Scale @ A1/A3:
NTS

Client:
JWD Developments Pty Ltd

Drawing Date:
27.05.21

Drawn/Checked
JG/IJ/PG/GW/MS/DB

Drawing Status:
DA

Project Number:
10-19

Drawing Number:
10-19.17

Issue:
O



SENSE OF COMMUNITY



CONNECTION TO RUMBALARA



COMMUNAL GARDENS



DINING



BEE KEEPING



COMMUNAL SPACES



CONNECTION TO RUMBALARA



BOCCÉ COURTS

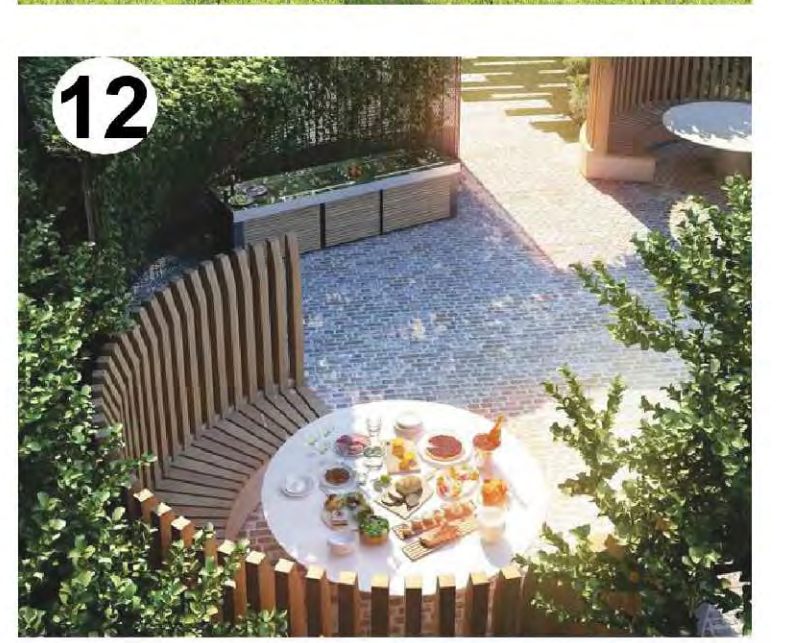


PUTTING GOLF GREENS



SWIMMING POOLS

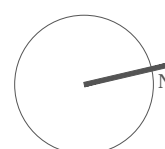
ACTIVE RECREATION



PASSIVE RECREATION

- 1 Swimming Pools
- 2 Putting Golf Greens
- 3 Bocce Courts
- 4 Connection to Rumbalara
- 5 Communal Productive Gardens
- 6 Outdoor Dining Opportunities
- 7 Bee Keeping to enhance natural habitats
- 8 Boardwalk Connection
- 9 Wildlife Corridor Bush Walk
- 10 Dynamic paths and planters
- 11 Open lawn space
- 12 Small communal gathering spaces

Rev.	Revision note:	Date:	Dwn by:
E	FOR DA APPROVAL	14.02.20	IJ
F	FOR DA APPROVAL	20.02.20	IJ
G	AMENDMENTS FOR DA APPROVAL	22.06.20	PG/IJ
H	AMENDMENTS FOR DA APPROVAL	17.07.20	PG/IJ
I	AMENDMENTS FOR DA APPROVAL	06.08.20	PG/IJ
J	AMENDMENTS FOR DA APPROVAL	07.08.20	PG/IJ
K	AMENDMENTS FOR DA APPROVAL	21.08.20	IJ
L	AMENDMENTS FOR DA APPROVAL	14.09.20	PG
M	AMENDMENTS FOR DA APPROVAL	19.10.20	JG/IJ
N	AMENDMENTS FOR DA APPROVAL	11.02.21	IJ
O	AMENDMENTS FOR DA APPROVAL	27.05.21	PG/IJ



Planning,
Industry &
Environment

Issued under the Environmental Planning and Assessment Act 1979

Approved Application No: SSD 10321

Granted on: 14 October 2021

Signed: AW Sheet No: 145 of 190

This document has been validated by Mark Santangelo
Registered Landscape Architect (ALA), BArch, Dip Hort

Verified by Dean Boone
DIRECTOR

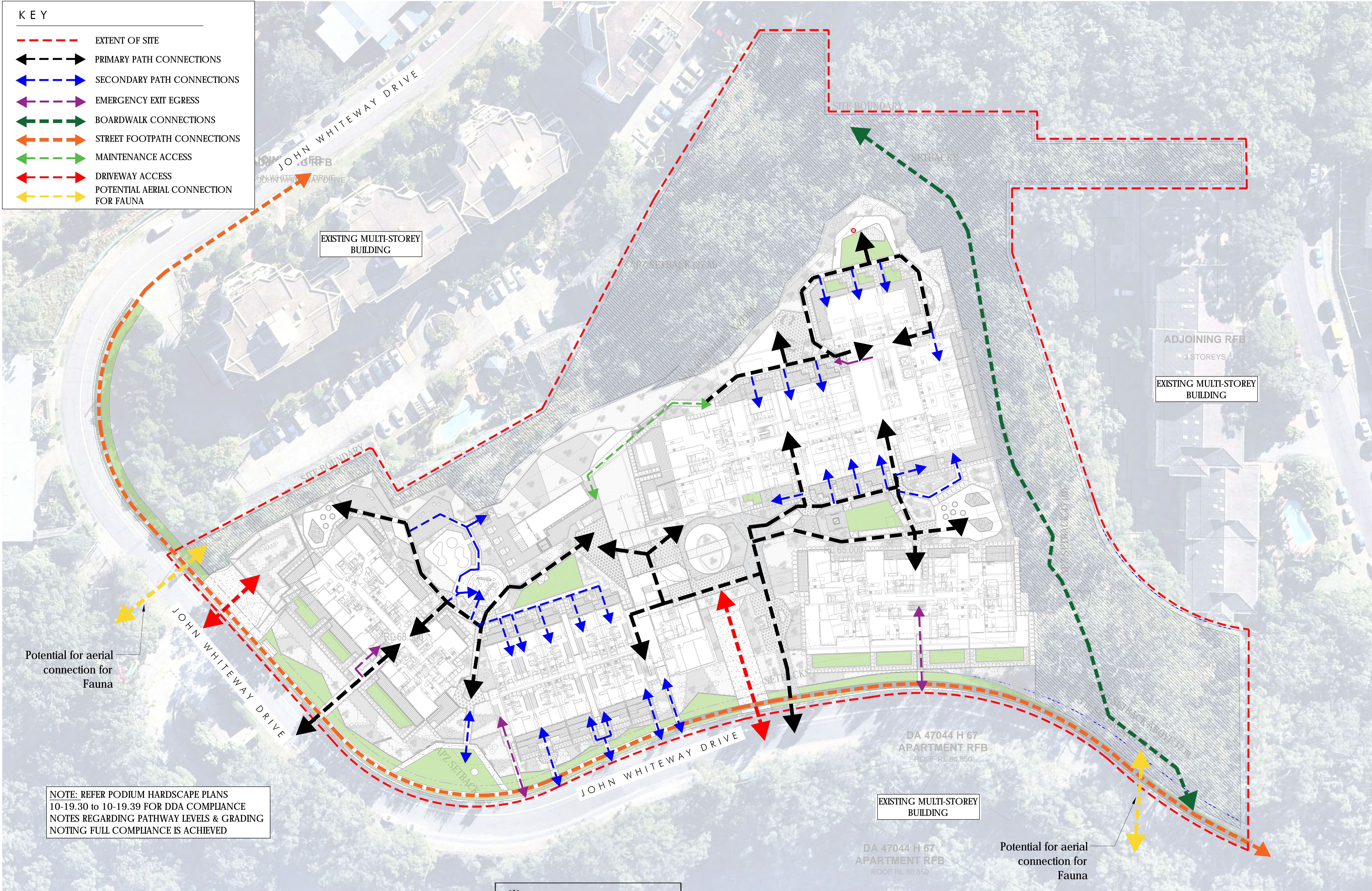
Project Title:
John Whiteway Drive JWD Development Gosford
Project Address:
89 John Whiteway Drive, Gosford
Drawing Title:
SPATIAL PROGRAMME PLAN

Location of all services is to be carried out by all contractors prior to commencement of works. Please Refer-You Dig Ph: 1100.
Refer plans by Architects, Engineers & Surveyors for other working drawings. Information on Distinctive plans is for reference &
co-ordination only. This drawings are to be read in conjunction with prepared specifications & details. It is the responsibility of the
contractor to notify Distinctive of any contradiction within the plans & receive appropriate direction prior to construction works. Final
layout is to be determined on site and at the direction of the site supervisor. Plans are copyright to Distinctive Gardens & Interior Pty Ltd.

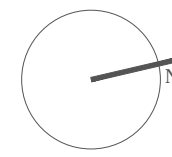
Scale @ A1/A3:
NTS Client:
JWD Developments Pty Ltd

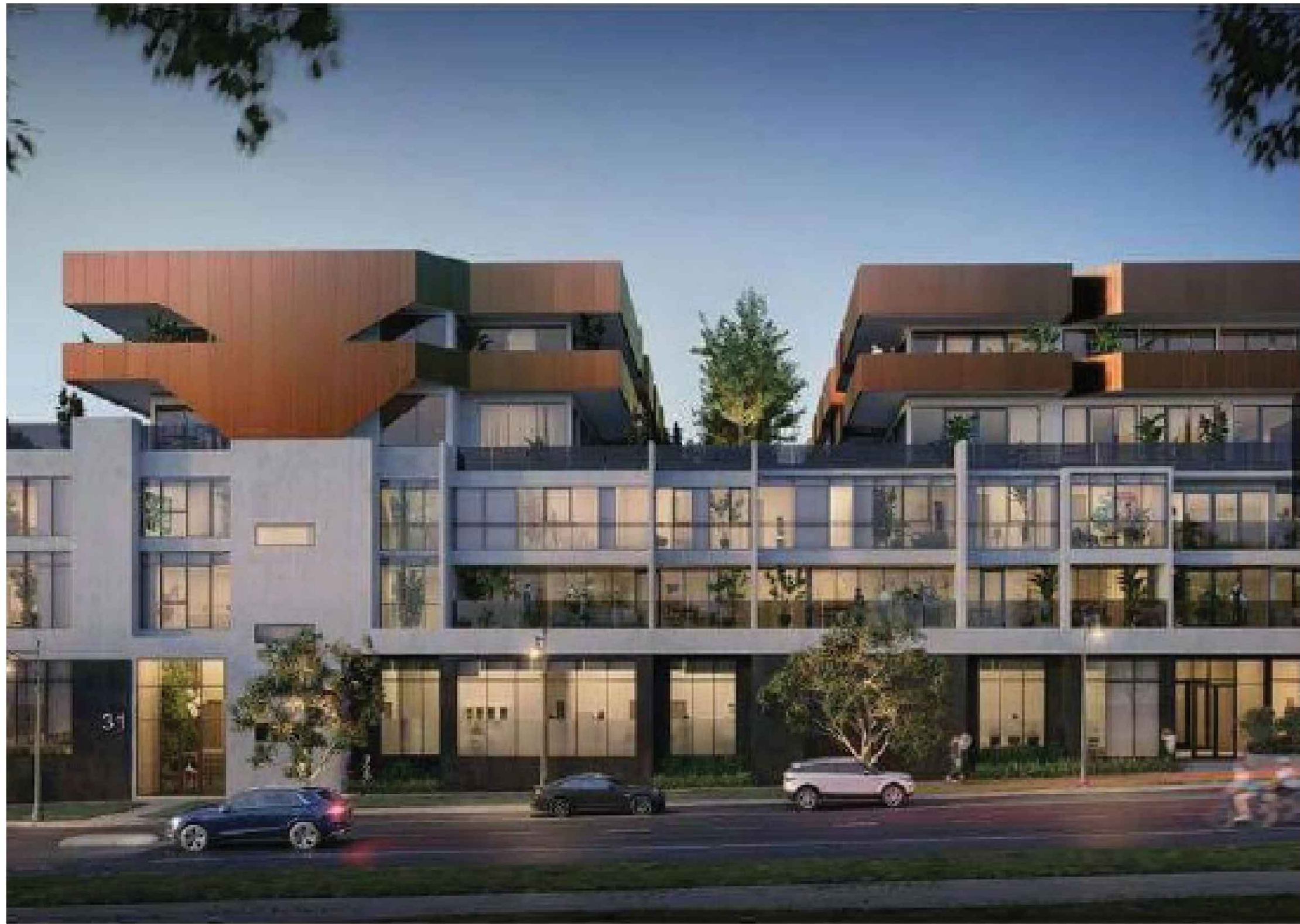
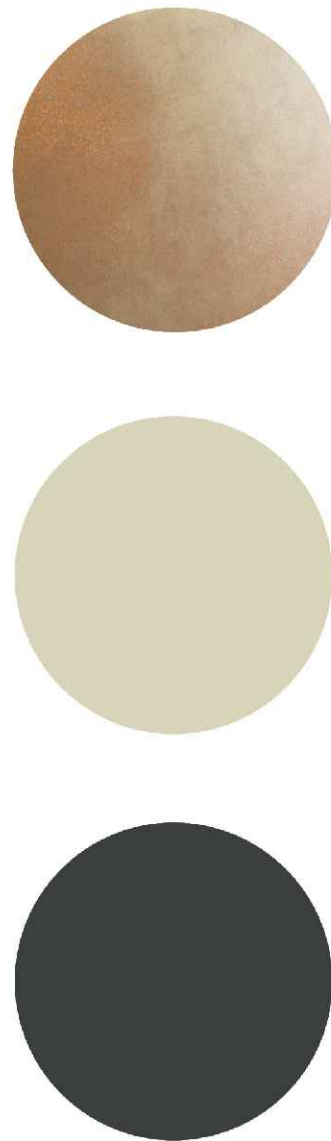
Drawing Date:
27.05.21 Drawn/Checked
JG/IJ/PG/GW/MS/DB Drawing Status:
DA

Project Number:
10-19 Drawing Number:
10-19.18 Issue:
O

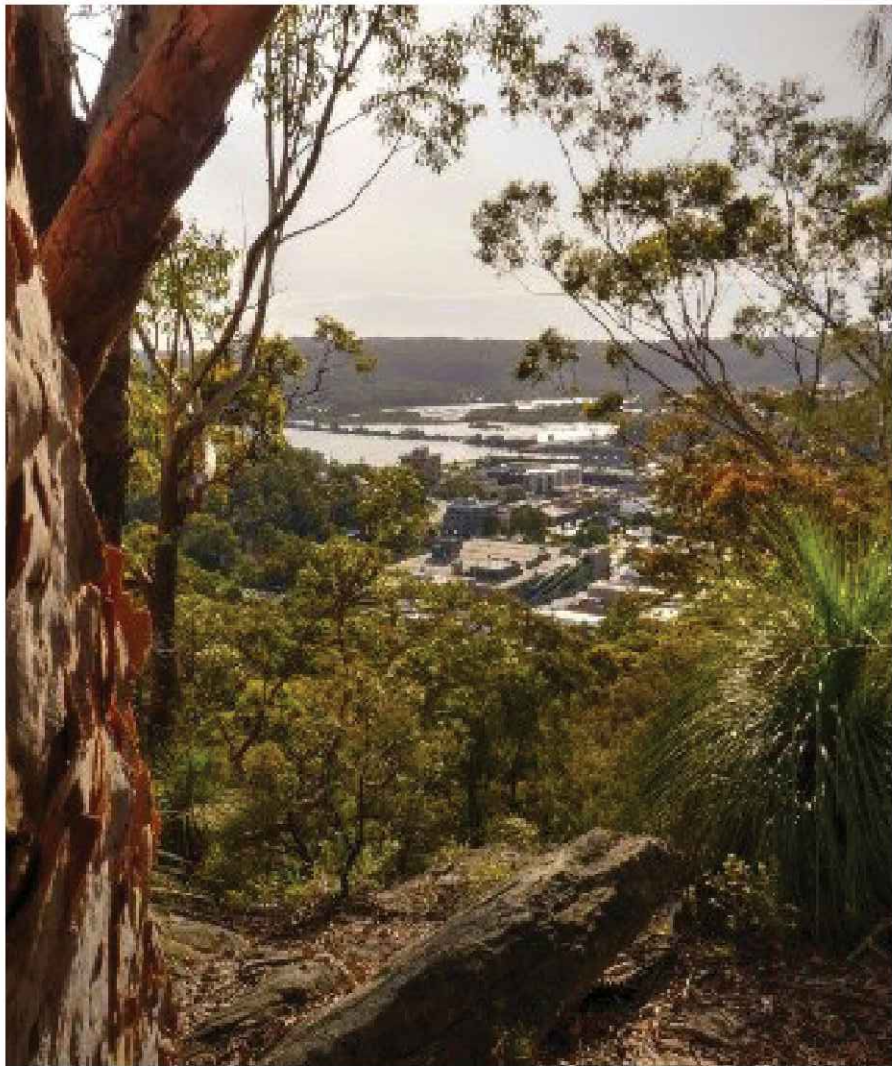


Rev:	Revision note:	Date:	Dwn by:
E	FOR DA APPROVAL	14.02.20	IJ
F	FOR DA APPROVAL	20.02.20	IJ
G	AMENDMENTS FOR DA APPROVAL	22.06.20	PG/IJ
H	AMENDMENTS FOR DA APPROVAL	17.07.20	PG/IJ
I	AMENDMENTS FOR DA APPROVAL	06.08.20	PG/IJ
J	AMENDMENTS FOR DA APPROVAL	07.08.20	PG/IJ
K	AMENDMENTS FOR DA APPROVAL	21.08.20	IJ
L	AMENDMENTS FOR DA APPROVAL	14.09.20	PG
M	AMENDMENTS FOR DA APPROVAL	19.10.20	JG/IJ
N	AMENDMENTS FOR DA APPROVAL	11.02.21	IJ
O	AMENDMENTS FOR DA APPROVAL	27.05.21	PG/IJ





VARIATION IN MATERIALS TO DEFINE LAYERS



RUMBALARA



REFLECT NATURAL PATTERNS/LAYERED TONES AND FEATURES

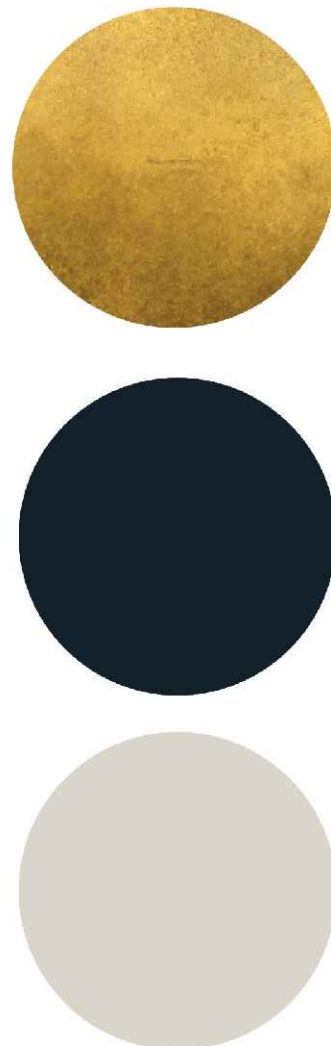
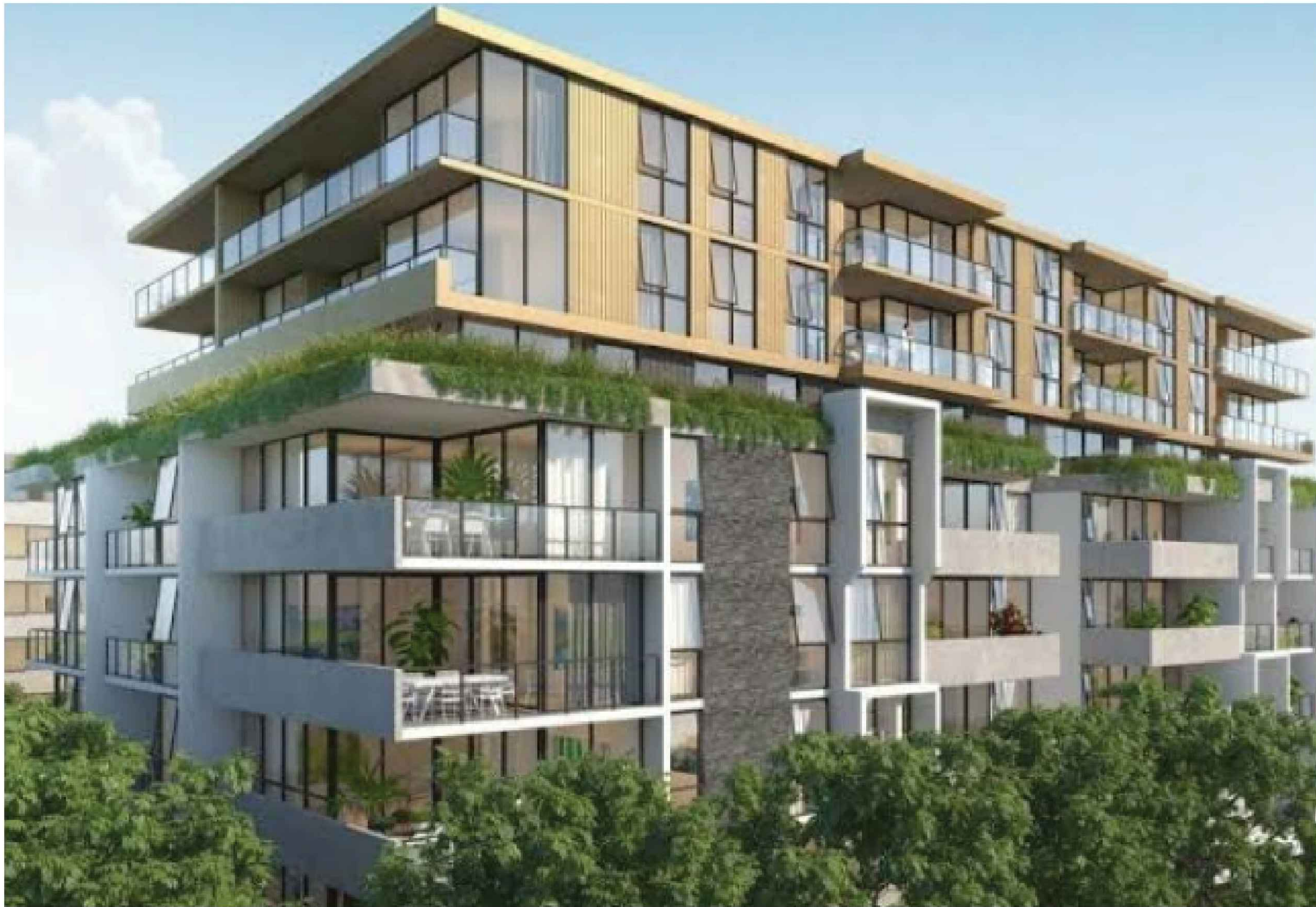



CONNECTION TO NATURE

Gosford DAP Comment Addressed:
The Panel supports the revised building profile in the view from the waterfront (near the swimming pool) and advises the proponent to consider a colour scheme that is compatible with the environment.



CONNECTION TO VIEWS





Planning,
Industry &
Environment

Issued under the Environmental Planning and Assessment Act 1979

Approved Application No: SSD 10321

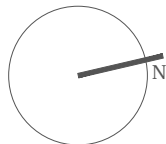
Granted on: 14 October 2021

Signed: AW Sheet No: 147 of 190



"BUILDING ON THE TONES OF THE
NATURAL ENVIRONMENT TO CREATE
A UNIQUE COMPOSITION AND
IDENTITY WITHIN THE BUILT FORM"

Rev.	Revision note:	Date:	Dwn by:
E	FOR DA APPROVAL	14.02.20	IJ
F	FOR DA APPROVAL	20.02.20	IJ
G	AMENDMENTS FOR DA APPROVAL	22.06.20	PG/IJ
H	AMENDMENTS FOR DA APPROVAL	17.07.20	PG/IJ
I	AMENDMENTS FOR DA APPROVAL	06.08.20	PG/IJ
J	AMENDMENTS FOR DA APPROVAL	07.08.20	PG/IJ
K	AMENDMENTS FOR DA APPROVAL	21.08.20	IJ
L	AMENDMENTS FOR DA APPROVAL	14.09.20	PG
M	AMENDMENTS FOR DA APPROVAL	19.10.20	JG/IJ
N	AMENDMENTS FOR DA APPROVAL	11.02.21	IJ
O	AMENDMENTS FOR DA APPROVAL	27.05.21	PG/IJ






GREEN ROOF TREATMENT



SPILL OVER GROUNDCOVER SPECIES





**Planning,
Industry &
Environment**

Issued under the Environmental Planning and Assessment Act 1979

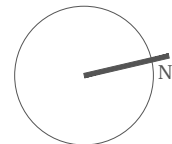
Approved Application No: SSD 10321

Granted on: 14 October 2021

Signed: AW **Sheet No: 148 of 190**

Central Coast Council Comment Addressed:
29. The scale of the development is such that the developer should be encouraged to provide sustainable and green building design measure that are above that which are required as a mandatory obligation.

Rev:	Revision note:	Date:	Dwn by:
E	FOR DA APPROVAL	14.02.20	IJZ
F	FOR DA APPROVAL	20.02.20	IJZ
G	AMENDMENTS FOR DA APPROVAL	22.06.20	PG/IJZ
H	AMENDMENTS FOR DA APPROVAL	17.07.20	PG/IJZ
I	AMENDMENTS FOR DA APPROVAL	06.08.20	PG/IJZ
J	AMENDMENTS FOR DA APPROVAL	07.08.20	PG/IJZ
K	AMENDMENTS FOR DA APPROVAL	21.08.20	IJZ
L	AMENDMENTS FOR DA APPROVAL	14.09.20	PG
M	AMENDMENTS FOR DA APPROVAL	19.10.20	JG/IJZ
N	AMENDMENTS FOR DA APPROVAL	11.02.21	IJZ
O	AMENDMENTS FOR DA APPROVAL	27.05.21	PG/IJZ



Native / Endemic Plant Species Schedule for Landscape Vegetation Corridor by distinctive								
Code	Genus	species	Hybrids/Cultivars	Common Name	Pot Size	Height	Width	Spacing
Trees								
Ba in	Banksia	integrifolia		Coastal Banksia	100L	12	8	As Shown
Cu an	Cupaniopsis	anacardioides		Tuckeroo	100L	10	8	As Shown
El eu	Elaeocarpus	eumundii		Quondong	75L	8	5	As Shown
Gl fe	Glochidion	fernandii		Cheese Tree	75L	7	5	As Shown
Li au	Livistona	australis		Cabbage Tree Palm	4m clear trunk	20	4	As Shown
To ci	Toona	ciliata		Australian Red Cedar	75L	20	10	As Shown
Tr Lu	Tristania	laurina	'Luscious'	Luscious Water Gum	75L	10	5	As Shown
Shrubs								
As BN	Asplenium	australicum	'Birds Nest'	Birds Nest Fern	300mm	1.5	2	As Shown
Bl nu	Blechnum	nudum		Fishbone Waterfern	140mm	1	1	As Shown
Do as	Doodia	aspera		Prickly Rasp Fern	200mm	0.4	0.4	4/m2
Do ex	Doryanthes	excelsa		Gymea Lilly	45L	2	1.5	As shown
Er ni	Eremophila	nivea		Silky Eremophila	140mm	1.5	1.5	As shown
Ma co	Macrozamia	communis		Burrawang	300mm	2	2	As Shown
Sy Bl	Syzygium	australe	'Blaze'	Blaze Lilly Pilly	200mm	1.5	1.25	As shown
We fr	Westringia	fruticosa	'Grey Box'	Coastal Rosemary	200mm	0.4	0.4	300mm centres
Groundcovers								
Ca ro	Carpobrotus	rossii		Pigface	200mm	0.4	3	2/m2
Ca FF	Casuarina	glauca	'Free Fall'	Prostrate Sheoak	200mm	0.6	3	2/m²
Ci an	Cissus	antarctica		Kangaroo Vine	200mm	3	5	As shown
He pe	Helichrysum	petiolare	'Licorice'	Licorice plant	200mm	0.5	1	2/m2
Lo Ta	Lomandra	longifolia	'Tanika'	Dwarf Lomandra	200mm	0.6	0.5	5/m2
Se WC	Scaevola	albida	'White Carpet'	Fan Flower	200mm	0.1	1.5m	3/m2
Se se	Senecio	serpens		Blue Chalk Sticks	200mm	0.2	0.5	5/m2

KEY

EXISTING FLORA AND FAUNA CORRIDOR TO BE RETAINED (THE WILDLIFE CORRIDOR), REFER TO VMP FOR DETAILS

PROPOSED NATIVE / ENDEMIC UNDERSTOREY SPECIES IN LANDSCAPE VEGETATION CORRIDOR TO ENHANCE WILDLIFE CORRIDOR, REFER TO SOFTSCAPE PLAN FOR DETAILS

PROPOSED NATIVE / ENDEMIC TREE SPECIES IN LANDSCAPE VEGETATION CORRIDOR TO ENHANCE WILDLIFE CORRIDOR, REFER TO SOFTSCAPE PLAN FOR DETAILS

Planning, Industry & Environment

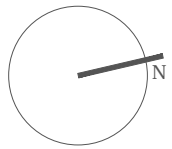
Issued under the Environmental Planning and Assessment Act 1979

Approved Application No: SSD 10321

Granted on: 14 October 2021

Signed: AW Sheet No: 149 of 190

Rev.	Revision note:	Date:	Dwn by:
E.	FOR DA APPROVAL	14.02.20	IZ.
F.	FOR DA APPROVAL	20.02.20	IZ.
G.	AMENDMENTS FOR DA APPROVAL	22.06.20	PG/IZ.
H.	AMENDMENTS FOR DA APPROVAL	17.07.20	PG/IZ.
I.	AMENDMENTS FOR DA APPROVAL	06.08.20	PG/IZ.
J.	AMENDMENTS FOR DA APPROVAL	07.08.20	PG/IZ.
K.	AMENDMENTS FOR DA APPROVAL	21.08.20	IZ.
L.	AMENDMENTS FOR DA APPROVAL	14.09.20	PG.
M.	AMENDMENTS FOR DA APPROVAL	19.10.20	JG/IZ.
N.	AMENDMENTS FOR DA APPROVAL	11.02.21	IZ.
O.	AMENDMENTS FOR DA APPROVAL	27.05.21	PG/IZ.



Project Title:
John Whiteway Drive JWD Development Gosford

Project Address:
89 John Whiteway Drive, Gosford

Drawing Title:
LANDSCAPE VEGETATION CORRIDOR DIAGRAM

Location of all services is to be carried out by all contractors prior to commencement of works. Phone Dial-Before-You-Dig Ph: 1100. Refer plans by Architects, Engineers & Surveyors for other working drawings. Information on Distinctive plans is for reference & co-ordination only. This drawings are to be read in conjunction with prepared specifications & details. It is the responsibility of the contractor to notify Distinctive of any contradiction within the plans & receive appropriate direction prior to construction works.Final layout is to be determined on site and at the direction of the site supervisor. Plans are copyright to Distinctive Gardens & Interior Pty Ltd.

Scale @ A1/A3: 1:400 / 1:800	Client: JWD Developments Pty Ltd	
Drawing Date: 27.05.21	Drawn/Checked JG/IZ/PG/GW/MS/DB	Drawing Status: DA
Project Number: 10-19	Drawing Number: 10-19.22	Issue: O