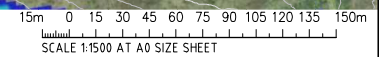


LEGEND: FLOOD HAZARD CLASSIFICATION AS PER AUSTRALIAN RAINFALL & RUNOFF 2019, A GUIDE TO FLOOD ESTIMATION - BOOK 6 - FLOOD HYDRAULICS.

Blue	- H1	Light Green	- H4
Cyan	- H2	Yellow	- H5
Green	- H3	Red	- H6

5% AEP PRE DEVELOPMENT HAZARD
SCALE 1:1500

FOR INFORMATION ONLY



ISSUED FOR INFORMATION	31.05.21	A	AMENDMENTS	DATE	ISSUE	AMENDMENTS	DATE	ISSUE

ARCHITECT **SBA ARCHITECTS**
Suite 102, 83 Mount Street North Sydney NSW 2060
 T: (02) 9550 8888 F: (02) 9550 8889
 E: info@sbaarchitects.com.au www.sbaarchitects.com.au

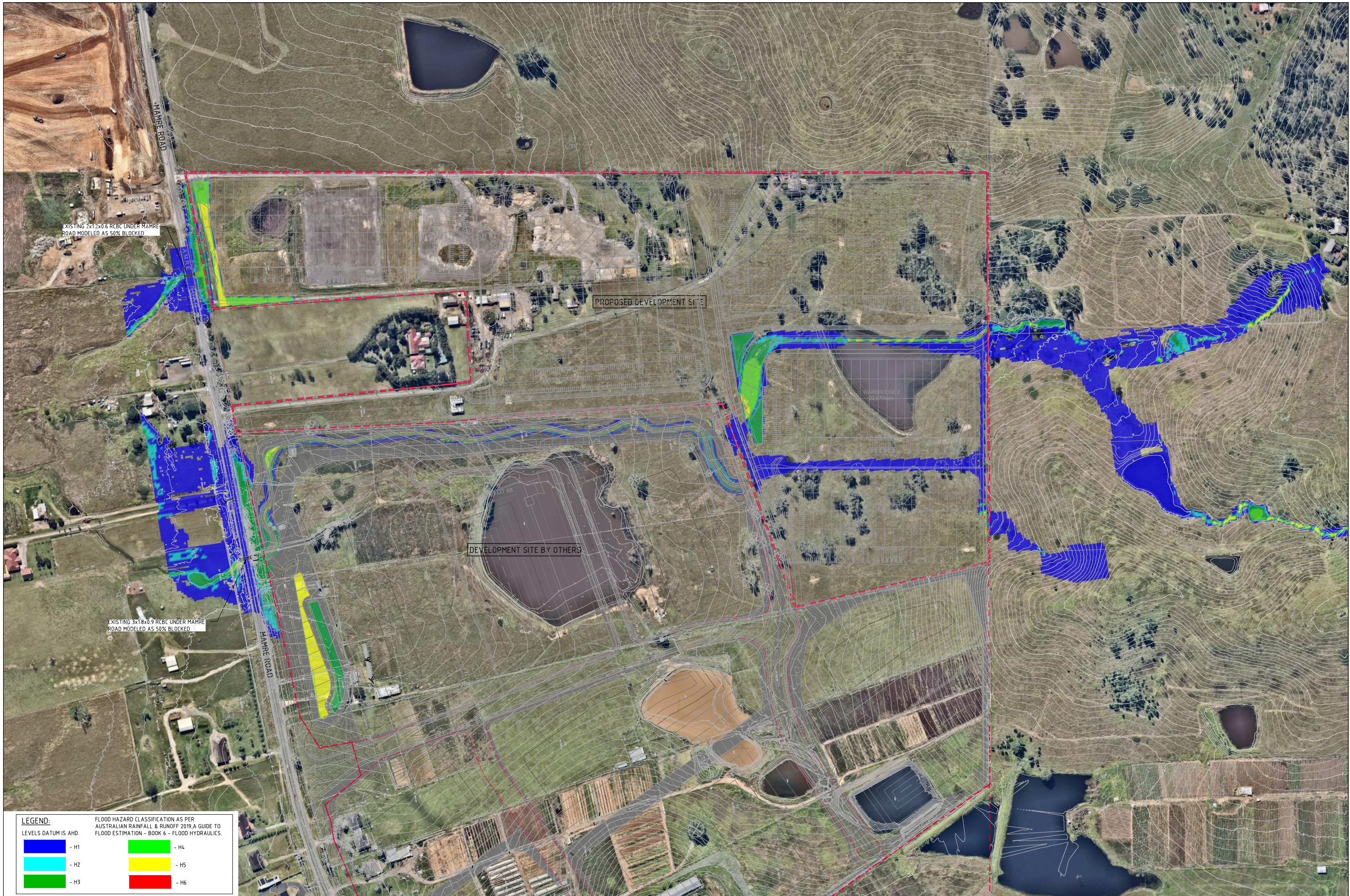
CLIENT **GPT The GPT Group**

PROJECT **YIRIBANA LOGISTICS ESTATE**
 754-770 & 784-786 MAMRE ROAD
 KEMPS CREEK NSW

CONSULTING ENGINEERS **Costin Roe Consulting Engineers**
 Level 1, 8 Windmill Street
 Walsh Bay, Sydney NSW 2000
 Tel: (02) 9551-7099 Fax: (02) 9541-3721
 email: mail@costinroe.com.au

Costin Roe Consulting
 PRECISION | COMMUNICATION | ACCOUNTABILITY

DRAWING TITLE **5% AEP PRE DEVELOPMENT FLOOD HAZARD**
 DRAWING No **C013874.06 - F17** ISSUE **A**

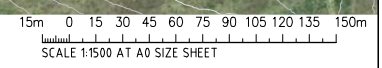


LEGEND: FLOOD HAZARD CLASSIFICATION AS PER AUSTRALIAN RAINFALL & RUNOFF 2019, A GUIDE TO FLOOD ESTIMATION - BOOK 6 - FLOOD HYDRAULICS.

Blue	- H1	Light Green	- H4
Cyan	- H2	Yellow	- H5
Green	- H3	Red	- H6

5% AEP POST DEVELOPMENT HAZARD
SCALE 1:1500

FOR INFORMATION ONLY



ISSUED FOR INFORMATION	31.05.21	A	AMENDMENTS	DATE	ISSUE	AMENDMENTS	DATE	ISSUE

ARCHITECT **SBA ARCHITECTS**
 Suite 102, 83 Mount Street, North Sydney NSW 2060
 T: 02 9550 8888 F: 02 9550 8889
 I: info@sbaarchitects.com.au www.sbaarchitects.com.au

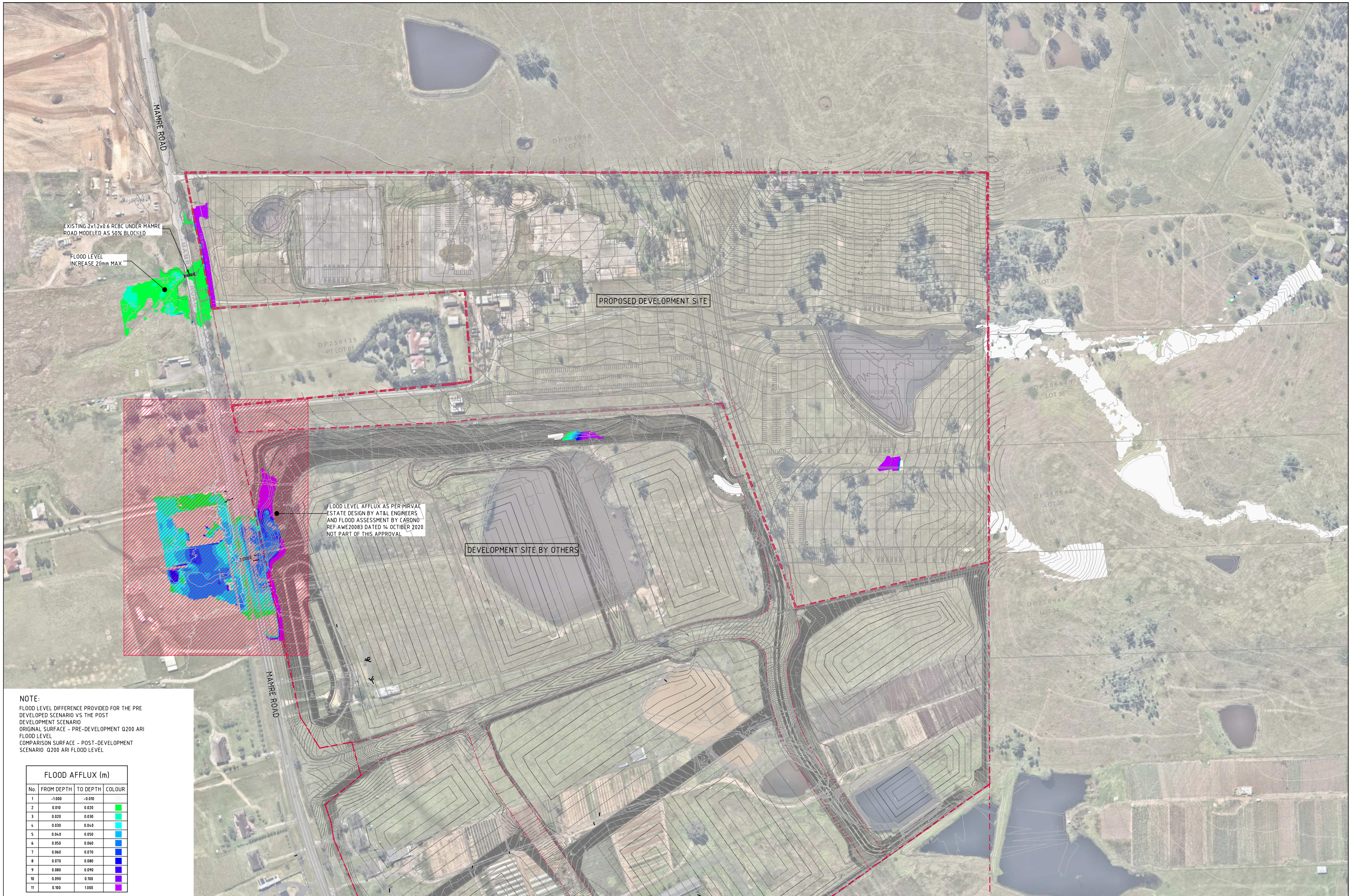
CLIENT **GPT The GPT Group**

PROJECT **YIRIBANA LOGISTICS ESTATE**
 754-770 & 784-786 MAMRE ROAD
 KEMPS CREEK NSW

CONSULT AUSTRALIA
 Costin Roe Consulting Engineers
 Level 1, 8 Windmill Street
 Walsh Bay, Sydney NSW 2000
 Tel: (02) 9551-7099 Fax: (02) 9541-3721
 email: mail@costinroe.com.au

Costin Roe Consulting
 PRECISION | COMMUNICATION | ACCOUNTABILITY

DRAWING TITLE **5% AEP POST DEVELOPMENT FLOOD HAZARD**
 DRAWING No **C013874.06-F18** ISSUE **A**



EXISTING 2x12x0.6 RCBC UNDER MAMRE ROAD MODELED AS 50% BLOCKED
 FLOOD LEVEL INCREASE 20mm MAX

PROPOSED DEVELOPMENT SITE

FLOOD LEVEL AFFLUX AS PER MIRVAL ESTATE DESIGN BY AT&L ENGINEERS AND FLOOD ASSESSMENT BY CARONO REF: AWE20083 DATED 14 OCTOBER 2020 NOT PART OF THIS APPROVAL

DEVELOPMENT SITE BY OTHERS

NOTE:
 FLOOD LEVEL DIFFERENCE PROVIDED FOR THE PRE DEVELOPED SCENARIO VS THE POST DEVELOPMENT SCENARIO
 ORIGINAL SURFACE - PRE-DEVELOPMENT Q200 ARI
 FLOOD LEVEL
 COMPARISON SURFACE - POST-DEVELOPMENT SCENARIO Q200 ARI FLOOD LEVEL

FLOOD AFFLUX (m)			
No.	FROM DEPTH	TO DEPTH	COLOUR
1	-1.000	-0.870	
2	0.010	0.020	Green
3	0.020	0.030	Light Green
4	0.030	0.040	Yellow
5	0.040	0.050	Orange
6	0.050	0.060	Red
7	0.060	0.070	Dark Red
8	0.070	0.080	Purple
9	0.080	0.090	Dark Purple
10	0.090	0.100	Blue
11	0.100	1.000	Light Blue

0.5% AEP FLOOD AFFLUX PLAN
 SCALE 1:1500

FOR INFORMATION ONLY

15m 0 15 30 45 60 75 90 105 120 135 150m
 SCALE 1:1500 AT A0 SIZE SHEET

ISSUED FOR INFORMATION	DATE	ISSUE	AMENDMENTS	DATE	ISSUE	AMENDMENTS	DATE	ISSUE
	31.05.21	A						
AMENDMENTS								

ARCHITECT
SBA
 ARCHITECTS
 Suite 102, 83 Mamre Street, North Ryde NSW 2113
 T: (02) 9550 8888 F: (02) 9550 8889
 E: info@sbaarchitects.com.au www.sbaarchitects.com.au

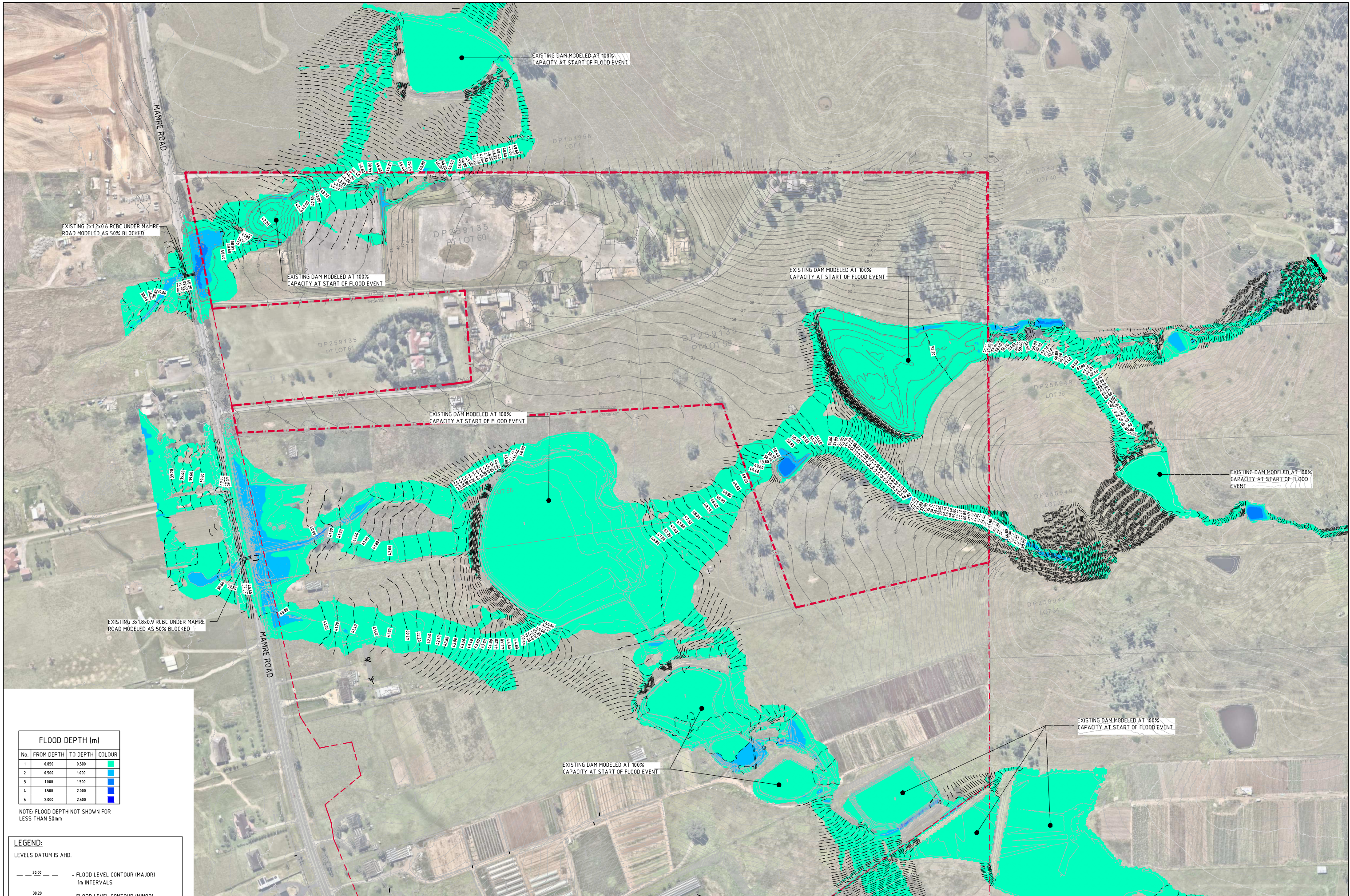
CLIENT
GPT
 The GPT Group

PROJECT
YIRIBANA LOGISTICS ESTATE
 754-770 & 784-786 MAMRE ROAD
 KEMPS CREEK NSW

CONSULTANT
Costin Roe Consulting Engineers
 Level 1, 8 Windmill Street
 Walsh Bay, Sydney NSW 2000
 Tel: (02) 9551-7099 Fax: (02) 9541-3721
 email: mail@costinroe.com.au

Costin Roe Consulting
 PRECISION | COMMUNICATION | ACCOUNTABILITY

DRAWING TITLE
0.5% AEP FLOOD AFFLUX PLAN
 DRAWING No C013874.06-F19 ISSUE A



FLOOD DEPTH (m)			
No.	FROM DEPTH	TO DEPTH	COLOUR
1	0.050	0.500	Cyan
2	0.500	1.000	Light Blue
3	1.000	1.500	Blue
4	1.500	2.000	Dark Blue
5	2.000	2.500	Very Dark Blue

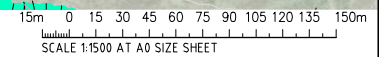
NOTE: FLOOD DEPTH NOT SHOWN FOR LESS THAN 50mm

LEGEND:
LEVELS DATUM IS AHD.

— 30.00 —	- FLOOD LEVEL CONTOUR (MAJOR) 1m INTERVALS
— 30.20 —	- FLOOD LEVEL CONTOUR (MINOR) 0.2m INTERVALS

0.5% AEP PRE DEVELOPMENT LEVELS & DEPTHS
SCALE 1:1500

FOR INFORMATION ONLY



ISSUED FOR INFORMATION	31.05.21	A	AMENDMENTS	DATE	ISSUE	AMENDMENTS	DATE	ISSUE

ARCHITECT

112-12000 Street, North Sydney NSW 2060
Tel: (02) 9551-7000 Fax: (02) 9551-7001
www.sba.com.au

CLIENT

PROJECT

YIRIBANA LOGISTICS ESTATE
754-770 & 784-786 MAMRE ROAD
KEMPS CREEK NSW

CONSULTANT

Costin Roe Consulting Pty Ltd.
Consulting Engineers
Level 1, 8 Windmill Street
Wahbi Bay, Sydney NSW 2000
Tel: (02) 9551-7000 Fax: (02) 9551-7001
email: mail@costinroe.com.au

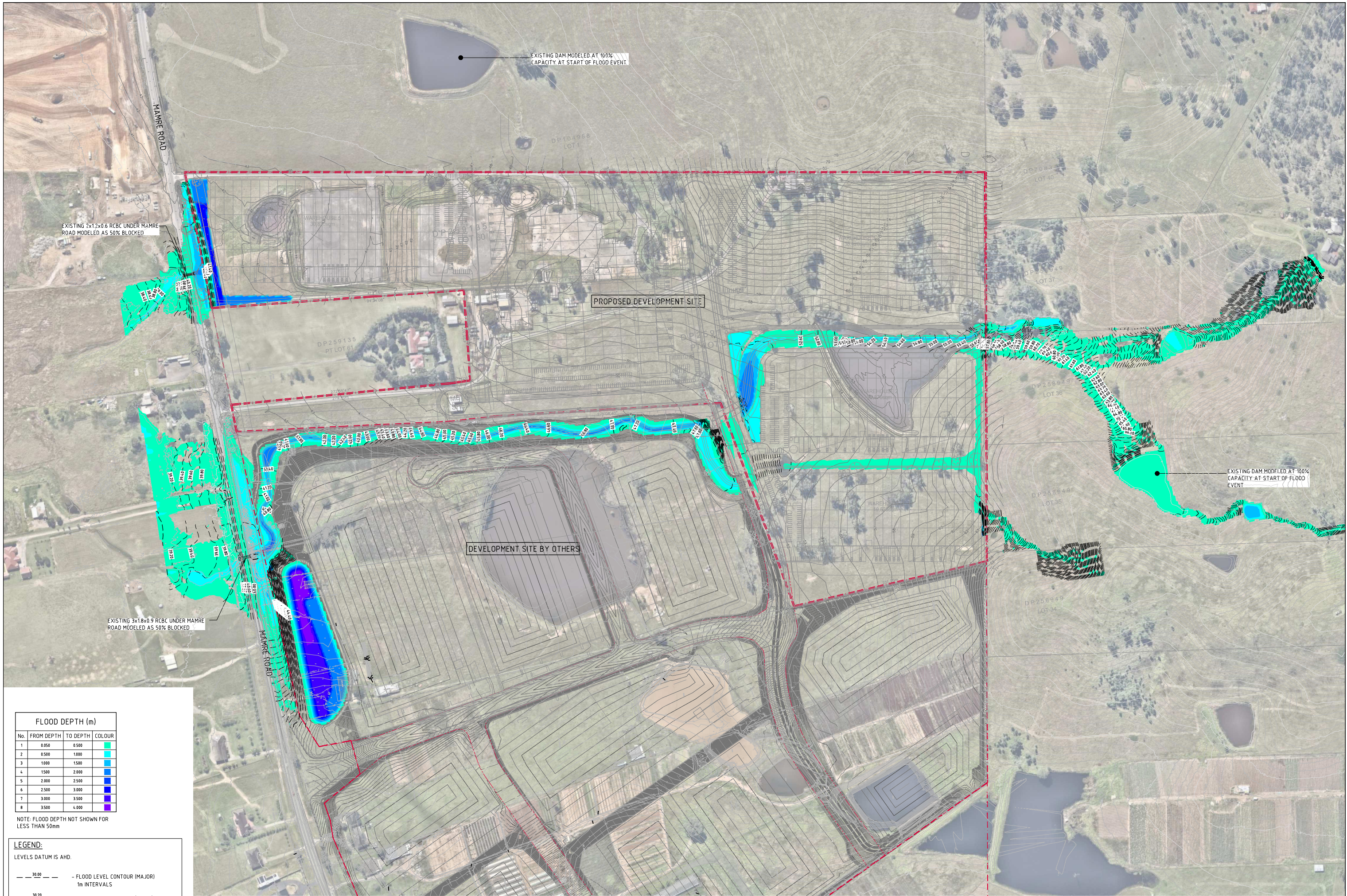
PRECISION | COMMUNICATION | ACCOUNTABILITY

DRAWING TITLE

0.5% AEP PRE DEVELOPMENT FLOOD LEVELS AND DEPTHS

DRAWING No: C013874.06-F20

ISSUE A



EXISTING DAM MODELED AT 100% CAPACITY AT START OF FLOOD EVENT

EXISTING 2x1.2x0.6 RCBC UNDER MAMRE ROAD MODELED AS 50% BLOCKED

PROPOSED DEVELOPMENT SITE

DEVELOPMENT SITE BY OTHERS

EXISTING DAM MODELED AT 100% CAPACITY AT START OF FLOOD EVENT

EXISTING 3x1.8x0.9 RCBC UNDER MAMRE ROAD MODELED AS 50% BLOCKED

FLOOD DEPTH (m)			
No.	FROM DEPTH	TO DEPTH	COLOUR
1	0.050	0.500	Light Green
2	0.500	1.000	Green
3	1.000	1.500	Light Blue
4	1.500	2.000	Blue
5	2.000	2.500	Dark Blue
6	2.500	3.000	Very Dark Blue
7	3.000	3.500	Black
8	3.500	4.000	Dark Purple

NOTE: FLOOD DEPTH NOT SHOWN FOR LESS THAN 50mm

LEGEND:
LEVELS DATUM IS AHD.

--- 30.00 ---	- FLOOD LEVEL CONTOUR (MAJOR) 1m INTERVALS
--- 30.20 ---	- FLOOD LEVEL CONTOUR (MINOR) 0.2m INTERVALS

0.5% AEP POST DEVELOPMENT LEVELS & DEPTHS
SCALE 1:1500

FOR INFORMATION ONLY

15m 0 15 30 45 60 75 90 105 120 135 150m
SCALE 1:1500 AT A0 SIZE SHEET

ISSUED FOR INFORMATION	31.05.21	A	AMENDMENTS	DATE	ISSUE	AMENDMENTS	DATE	ISSUE

ARCHITECT
SBA
ARCHITECTS
Suite 102, 83 Mamre Street, North Ryde NSW 2113
T: (02) 9550 8888 F: (02) 9550 8889
info@sba.com.au www.sba.com.au

CLIENT
GPT
The GPT Group

PROJECT
YIRIBANA LOGISTICS ESTATE
754-770 & 784-786 MAMRE ROAD
KEMPS CREEK NSW

CONSULT AUSTRALIA
Costin Roe Consulting Pty Ltd.
Consulting Engineers
Level 1, 8 Windmill Street
Wahbi Bay, Sydney NSW 2000
Tel: (02) 9551-7099 Fax: (02) 9541-3721
email: mail@costinroe.com.au

Costin Roe Consulting
PRECISION | COMMUNICATION | ACCOUNTABILITY

DRAWING TITLE
0.5% AEP POST DEVELOPMENT
FLOOD LEVELS AND DEPTHS
DRAWING No C013874.06 - F21 ISSUE A