



# Yiribana Logistics Estate Landscape Masterplan June 2021



SITE IMAGE  
Landscape Architects



- Introduction
- Landscape Concept Masterplan
- Landscape Stage 1 Masterplan
- Landscape Typologies
- Streetscape Frontage
- Streetscape Frontage Planting
- Mamre Road Frontage
- Mamre Road Frontage Planting
- Boundary
- Boundary Planting
- Bio Basin
- Bio Basin Planting
- Riparian Zone
- Riparian Zone Planting

The landscape concept masterplan demonstrates the vision for the GPT Kemps Creek Estate.

Our vision for the landscape design is to respond to the heritage of the traditional land owners and natural systems of the site. Letting these values inform the landscape and open space design, while responding to the needs of the development the landscape aims to create a sustainable, respectful and functional outcome.

This Masterplan report is to be read with the following landscape documentation as well as civil, architectural and ecological reports.






# Masterplan / Landscape Concept Masterplan


The Landscape concept masterplan demonstrates the vision for the GPT Kemps Creek Estate  
This Masterplan report is to be read with other consultants report including civil, and architectural







# Masterplan / Typologies


- 

GPT Estate Boundary
- 

Boundary Planting  
Native with some species as suggested in future VMP
- 

Bio Basin  
Native species to meet civil performance requirements
- 

Riparian Zone  
species as suggested in future VMP
- 

Streetscape Frontages  
Mix of exotics say 30/70 with some turf areas seasonal variation in planting
- 

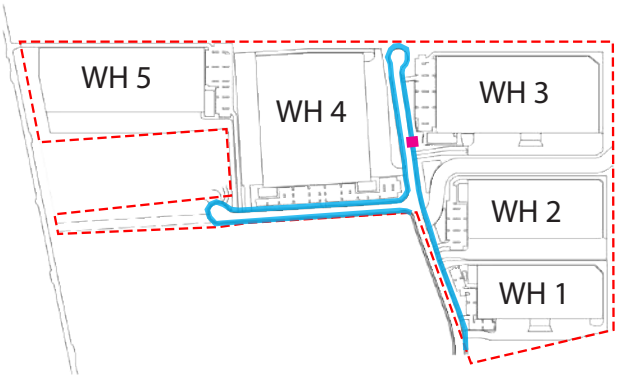
Mamre Road Frontage  
Planting to screen view of warehouses from Mamre Road



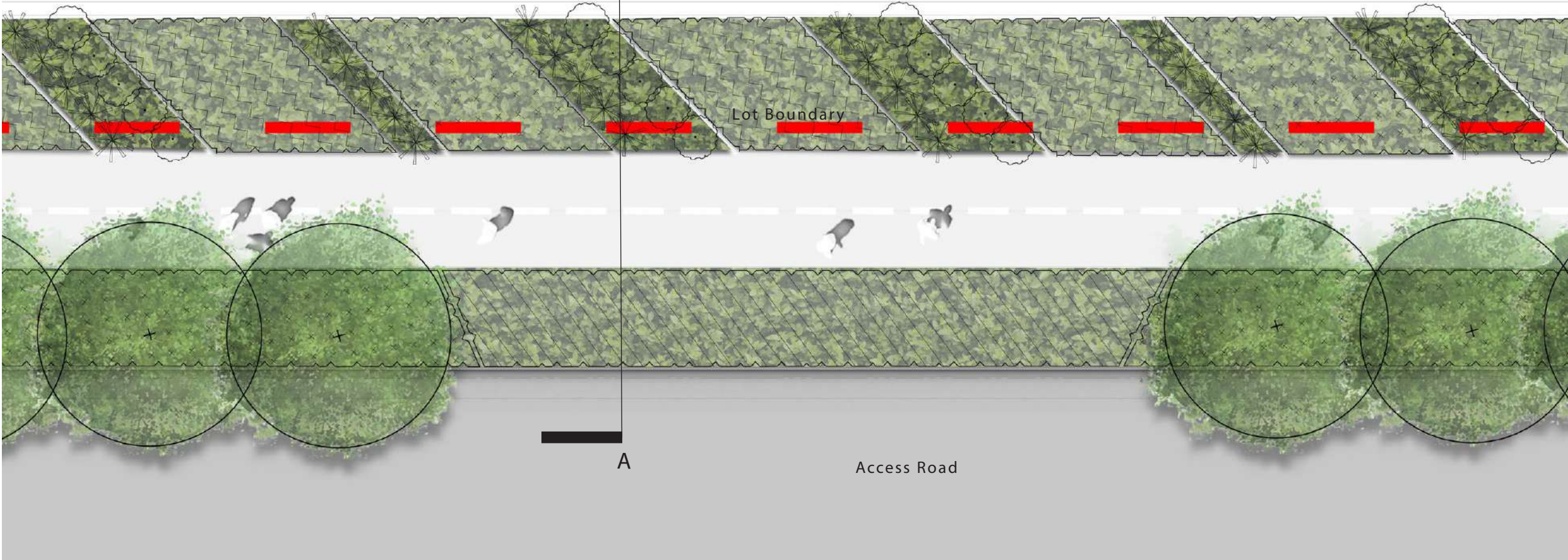


# Masterplan / Streetscape Frontage

Streetscape frontages are the main presentational frontage of lots to the access roads. Roads are to feature street tree planting to both sides as well as groundcovers. The frontage will consist of a variety of native and exotic shrubs, groundcovers, and small-medium trees. Security fencing is to be positioned amongst the landscape to receded into the planting



Section A | Typical Streetscape Frontage Cross Section 1:150





# Masterplan / Streetscape Frontage Planting

## Streetscape

Botanic Name	Common Name	Mature Size (h x w) (m)
<strong>TREES</strong>		
<i>Corymbia maculata</i>	Spotted Gum	30 x 8
<i>Eucalyptus crebra</i>	Narrow Leaved Iron Bark	35
<strong>SHRUBS &amp; ACCENTS</strong>		
<i>Acmena smithii</i> var. minor	Lilly Pilly	2 x 2
<i>Callistemon</i> 'Endeavour'	Bottlebrush	2 x 3
<i>Loropetalum</i> 'Purple Pixie'	Purple Pixie Loropetalum	.5 x 1.2
<i>Westringia fruticosa</i>	Coastal Roasemary	2 x 2
<strong>GRASSES AND GROUNDCOVERS</strong>		
<i>Carpobrotus glaucescens</i>	Pigface	.15 x 1
<i>Hardenbergia violacea</i>	Purple Coral Pea	2 x 3
<i>Gazania tomentosa</i>	Silver Gazania	.15 x 1
<i>Myoporum parvifolium</i>	Creeping Boobialla	.3 x 2
<i>Trachelospermum jasminoides</i>	Star Jasmine	0.3 x 0.3

## Indicative Species

*Corymbia maculata*

Spotted Gum



*E. crebra*

Narrow Leaved Ironbark



Myoporum parvifolium to understory of trees

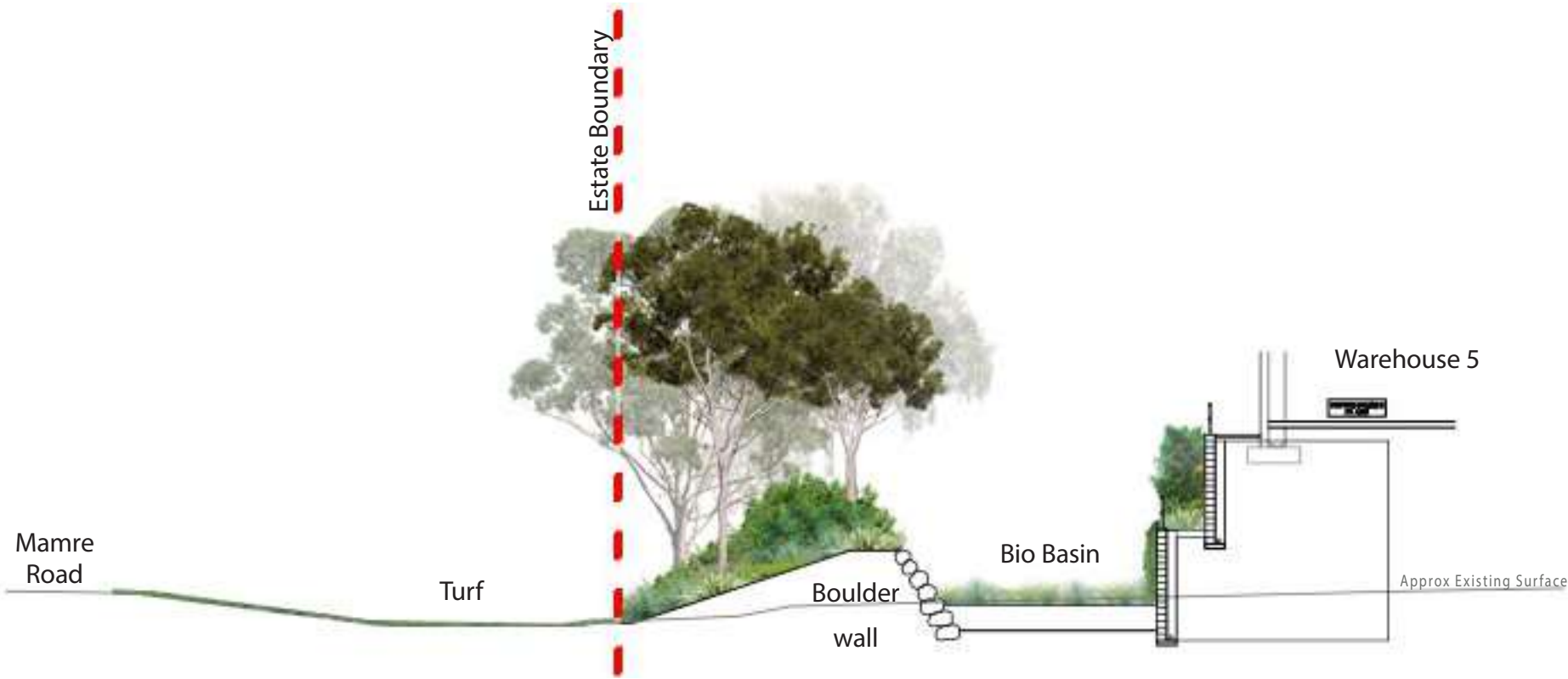
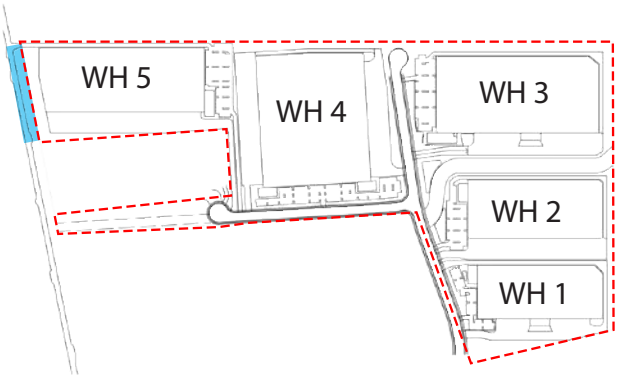
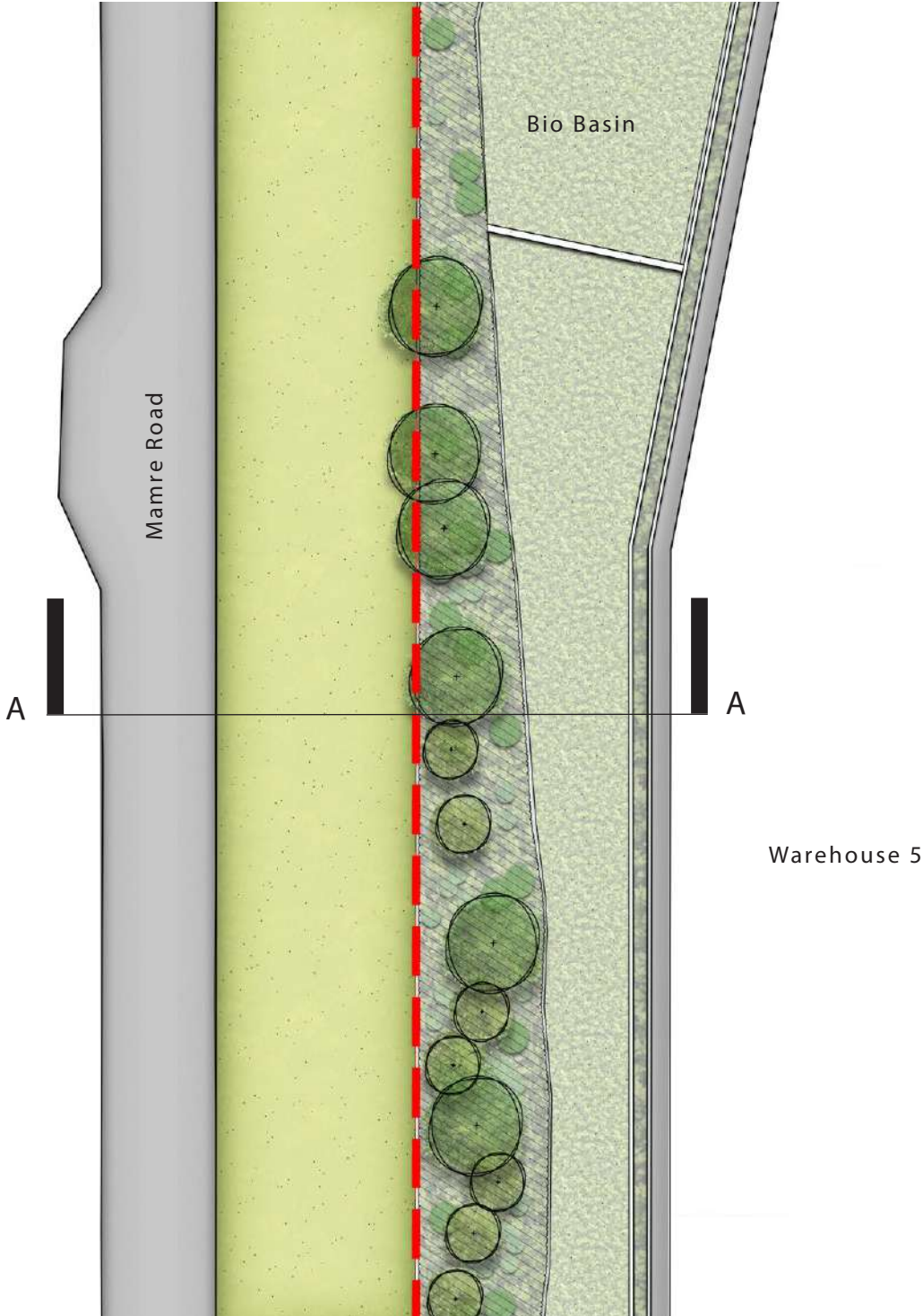


Massed grasses to alternate



# Masterplan / Mamre Road Frontage

The Mamre Road frontage consists of embankments sloping from lots down the road. Massed planting of shrubs, grasses and groundcovers are proposed with large canopy trees. The Bio Basin consists of low ground planting and shrubs.



Section A | Typical Mamre Road Frontage Cross Section 1:250



# Masterplan / Mamre Road Frontage Planting

Botanic Name	Common Name	Mature Size (h x w) (m)
TREES		
<i>Corymbia maculata</i>	Spotted Gum	30 x 8
<i>Eucalyptus eugenioides</i>	Thin leaved stringybark	20 x 8
<i>Melaleuca styphelioides</i>	Prickly Leaved Paperbark	8 x 6
SHRUBS & ACCENTS		
<i>Acmena smithii</i> var. <i>minor</i>	Lilly Pilly	2 x 2
<i>Callistemon 'Endeavour'</i>	Bottlebrush	2x3
<i>Callistemon 'Little John'</i>	Dwarf Bottle Brush	1 x 1
<i>Dodonaea viscosa</i> subsp. <i>cuneata</i>	Wedge-leaf Hop-bush	3 x 1
<i>Melaleuca linariifolia</i> 'Claret Tops'	Honey Myrtle	1 x 1
<i>Phormium tenax</i> 'Purpureum'	Bronze Flax	1.5 x 1
<i>Westringia fruticosa</i>	Coastal Roosemary	2 x 2
GRASSES AND GROUNDCOVERS		
<i>Carpobrotus glaucescens</i>	Pigface	.15 x 1
<i>Gazania tomentosa</i>	Silver Gazania	.15 x 1
<i>Hardenbergia violacea</i>	Purple Coral Pea	2 x 3
<i>Lomandra longifolia</i>	Matt Rush	1 x 1
<i>Myoporum parvifolium</i>	Creeping Boobialla	.3 x 2
<i>Poa 'Kingsdale'</i>	Tussock Grass	.3 x .6
<i>Pennisetum 'Nafray'</i>	Swamp Foxtail Grass	.6 x .6
<i>Trachelospermum jasminoides</i>	Star Jasmine	0.3 x 0.3

## Indicative Species

*Corymbia maculata*

Spotted Gum



*E. eugenioides*

Thin Leaved Stringybark



Myoporum parvifolium to  
understory of trees

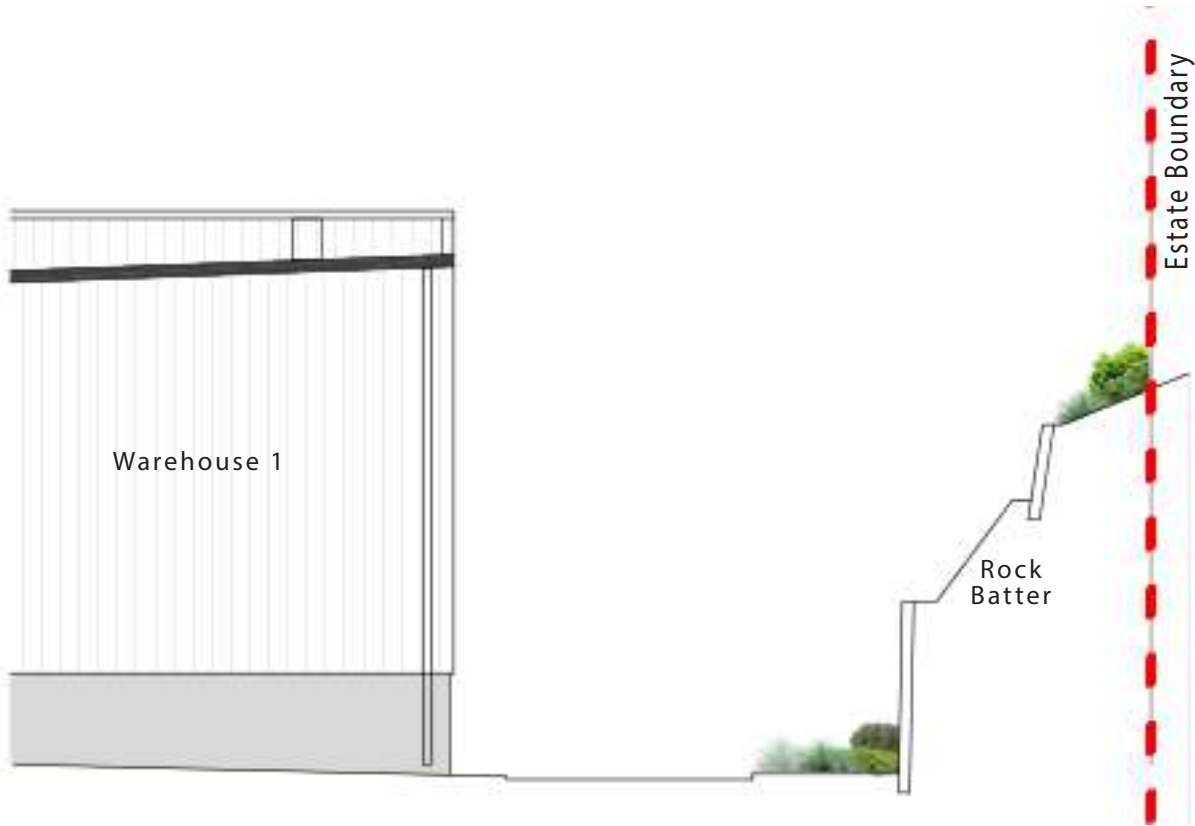


Massed grasses to alternate

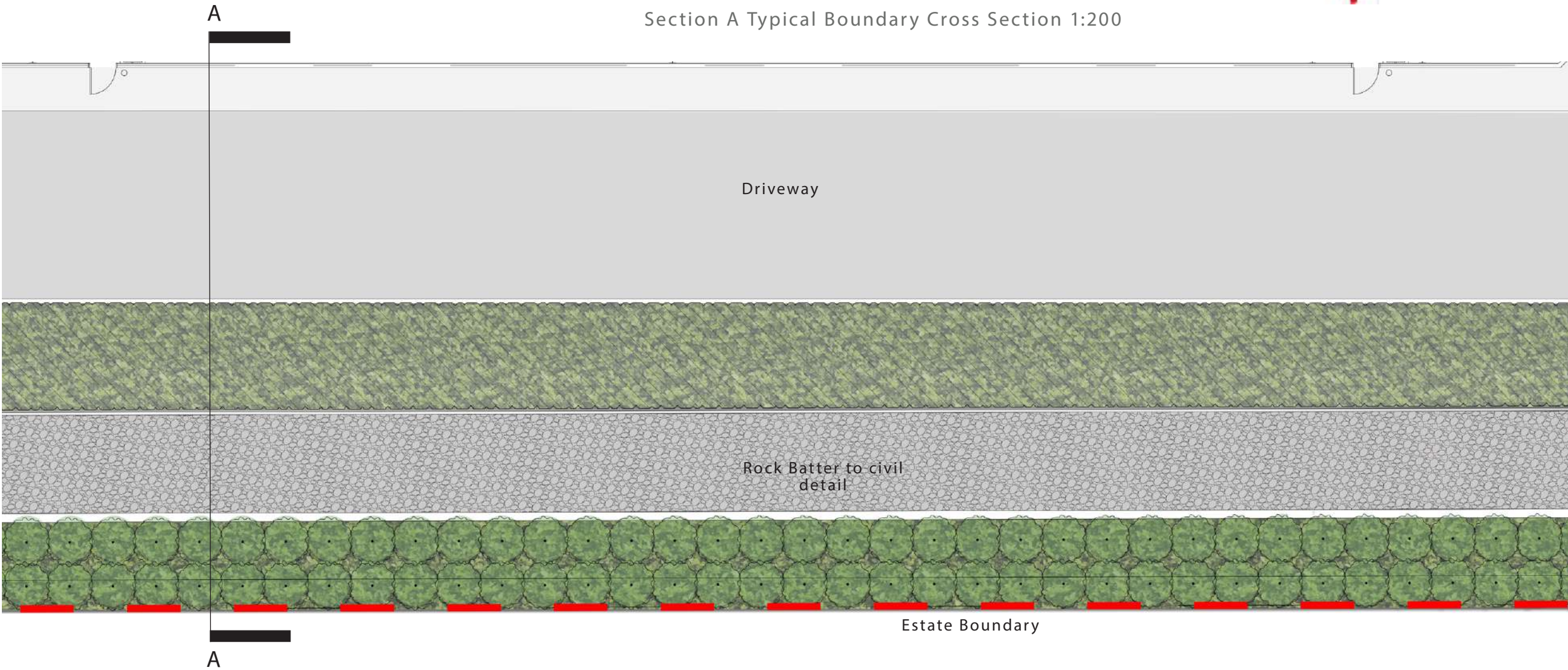


# Masterplan / Boundary

Boundary treatments will feature planting of native shrub grass and groundcovers. In locations where there is a retaining wall below cascading plants will be provided to break up the mass of the wall.



Section A Typical Boundary Cross Section 1:200





# Masterplan / Boundary Planting

Botanic Name	Common Name	Mature Size (h x w) (m)
TREES		
<i>Corymbia maculata</i>	Spotted Gum	30 x 8
<i>Eucalyptus crebra</i>	Narrow-leaved Ironbark	35
<i>Eucalyptus eugenioides</i>	Thin-leaved Stringybark	30 x 8
<i>Eucalyptus moluccana</i>	Grey Box	25
SHRUBS & ACCENTS		
<i>Acmena smithii</i> var. minor	Lilly Pilly	2 x 2
<i>Callistemon</i> 'Endeavour'	Bottlebrush	2 x 3
<i>Dodonaea viscosa</i> subsp. <i>cuneata</i>	Wedge-leaf Hop-bush	3 x 1
GRASSES AND GROUNDCOVERS		
<i>Carpobrotus glaucescens</i>	Pigface	.15 x 1
<i>Carex inversa</i>	Knob Sedge	.1 x .1
<i>Hardenbergia violacea</i>	Purple Coral Pea	2 x 3
<i>Gazania tomentosa</i>	Silver Gazania	.15 x 1
<i>Myoporum parvifolium</i>	Creeping Boobialla	.3 x 2
<i>Poa</i> 'Kingsdale'	Tussock Grass	.3 x .6
<i>Pennisetum</i> 'Nafray'	Swamp Foxtail Grass	.6 x .6

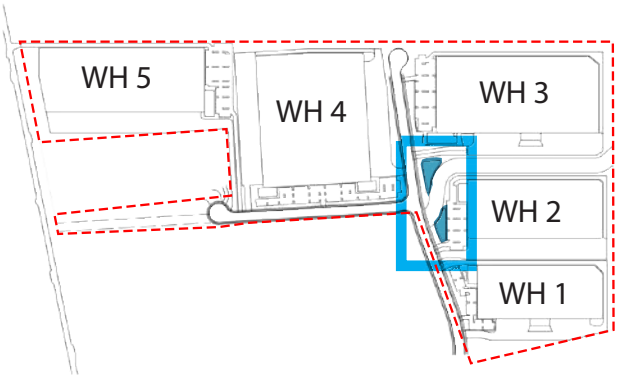
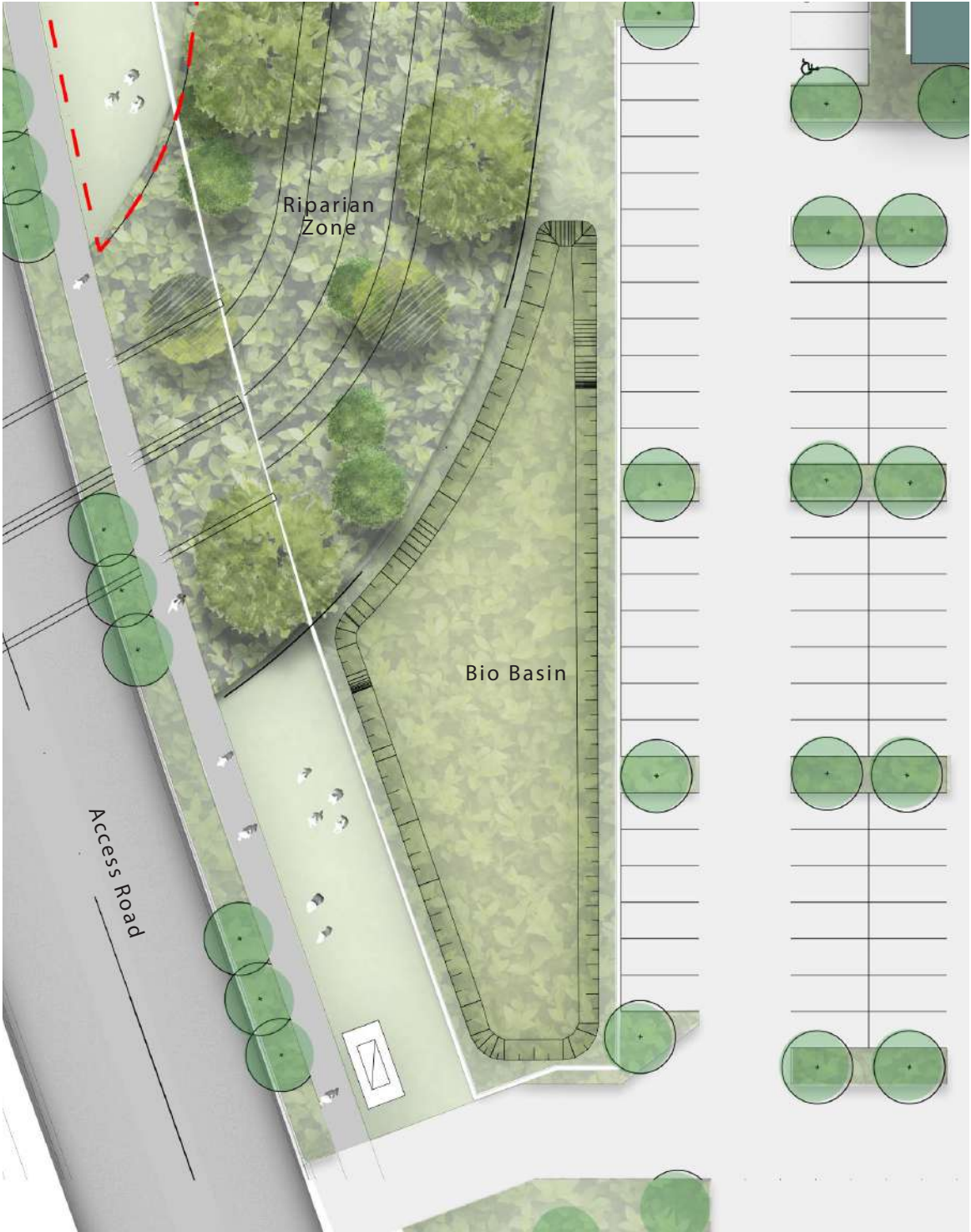
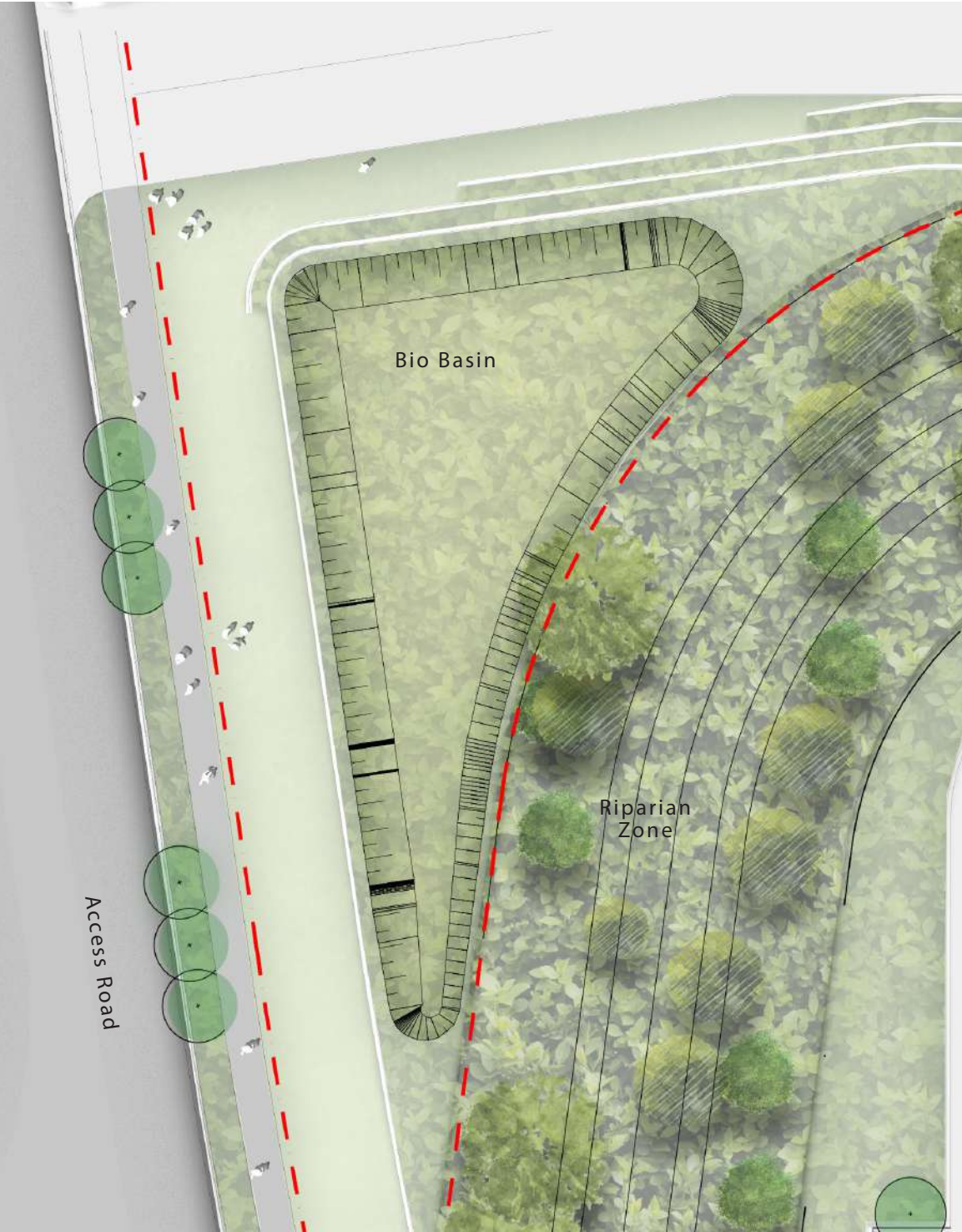
## Indicative Species





# Masterplan / Basin

The Stormwater basin will feature planting to compliment the water retention and treatment processes designed by civil. A Grass-Cel maintenance pathway provides access around the perimeter of the basin at the top of the embankment. Appropriate safety fencing shall be included where necessary.





# Masterplan / Basin Planting

Botanic Name	Common Name	Mature Size (h x w) (m)
<b>GRASSES AND GROUNDCOVERS</b>		
<i>Carex inversa</i>	Knob Sedge	.1 x .1
<i>Lomandra longifolia</i>	Matt Rush	1 x 1
<i>Imperata cylindrica</i> var. <i>major</i>	Blady Grass	.75 x .3
<i>Juncus usitatus</i>	Common Rush	.6 x 1
<i>Poa labillardieri</i>	Tussock Grass	.3 x .6
<i>Themeda australis</i>	Kangaroo Grass	1 x .5

## Indicative Species





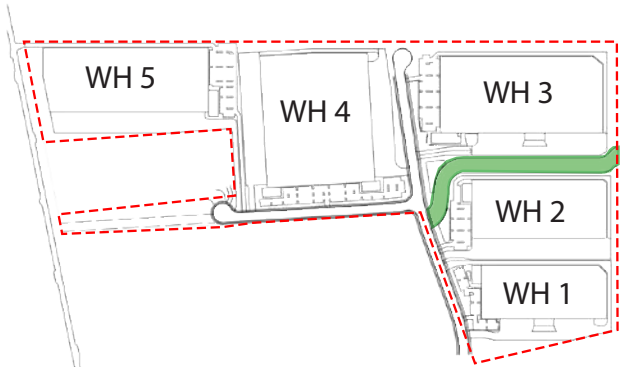
# Masterplan / Riparian Zone

The Riparian Zone will be planted and maintained in accordance with report produced by Cumberland Ecology. The riparian zone will be demarcated with fencing - security fencing where adjoining lots and post and rail as a boundary marker style.

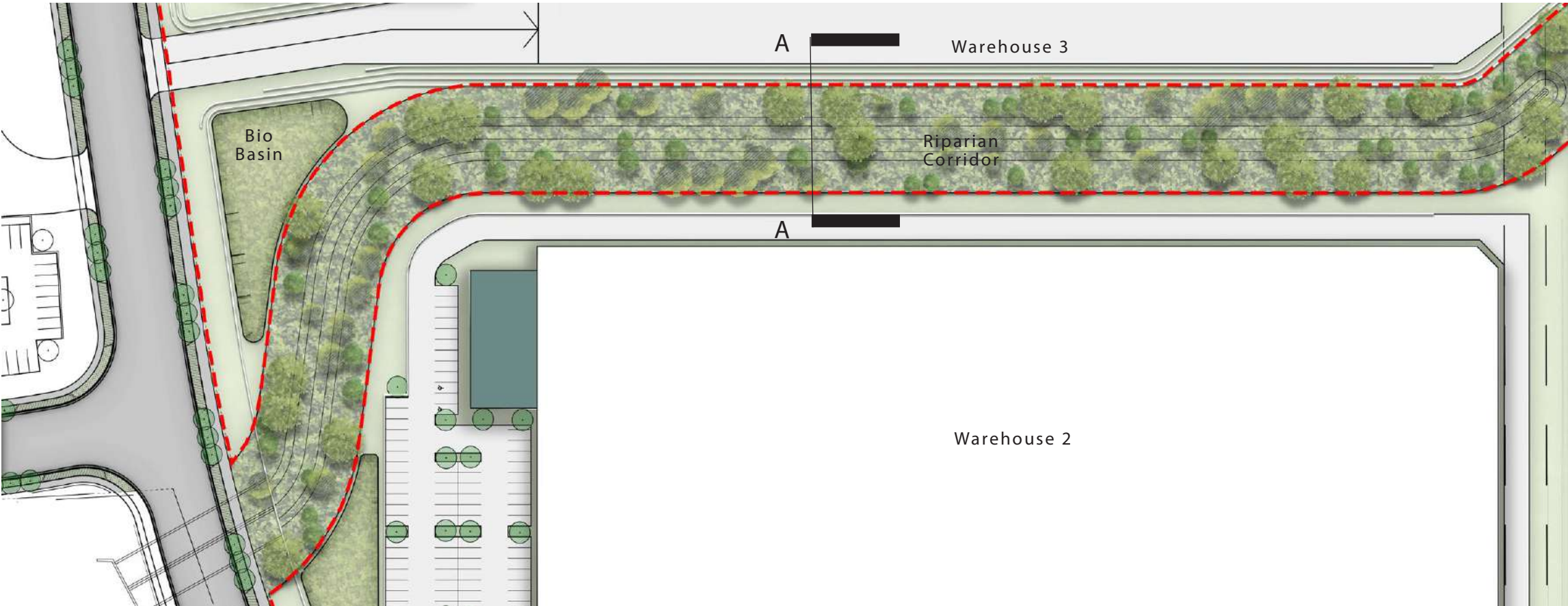
Warehouse 3



Section A | Typical Riparian Cross Section 1:200



Warehouse 2





# Masterplan / Riparian Zone Planting

Botanic Name	Common Name	Mature Size (h x w) (m)
TREES		
<i>Angophora floribunda</i>	Rough Barked Apple	20 x 20
<i>Eucalyptus amplifolia</i>	Cabbage Gum	30
<i>Eucalyptus moluccana</i>	Grey Box	25
<i>Eucalyptus tereticornis</i>	Forest Red Gum	35
SHRUBS & ACCENTS		
<i>Acacia parramattensis</i>	Parramatta Wattle	10 x 6
<i>Acmena smithii</i> var. <i>minor</i>	Lilly Pilly	2 x 2
<i>Bursaria spinosa</i>	Blackthorn	4 x 3
GRASSES AND GROUNDCOVERS		
<i>Bothriochloa decipiens</i> car. <i>Decipiens</i>	Pitted Blue Grass	1
<i>Brunoniella australis</i>	Blue Trumpets	-
<i>Carex appressa</i>	Tall Sedge	0.9 x 1
<i>Centella asiatica</i>	Indian Pennywort	.2 x 1
<i>Chloris truncata</i>	Windmill Grass	.5 x .3
<i>Dianella caerulea</i>	Blue Flax Lily	1 x 1
<i>Dichondra repens</i>	Kidney Weed	.1 x 1
<i>Echinopogon ovatus</i>	Forest Hedgehog Grass	1.2
<i>Entolasia marginata</i>	Bordered Panic	0.8 x 0.5
<i>Imperata cylindrica</i>	Blady Grass	.75 x .3
<i>Juncus usitatus</i>	Common Grass	.6 x 1
<i>Lomandra longifolia</i>	Mat Rush	1 x 1
<i>Microlaena stipoides</i>	Weeping Grass	0.7 x 0.3
<i>Viola hederacea</i>	Native Violet	.15 x 1

Sourced from the Vegetation Management Plan by Cumberland Ecology

## Indicative Species







Yiribana Logistics Estate  
Landscape Stage 1 Masterplan  
June 2021



SITE IMAGE  
Landscape Architects





Stage 1 / Introduction

- Landscape Stage 1 Masterplan
- Warehouse 1
- Warehouse 3

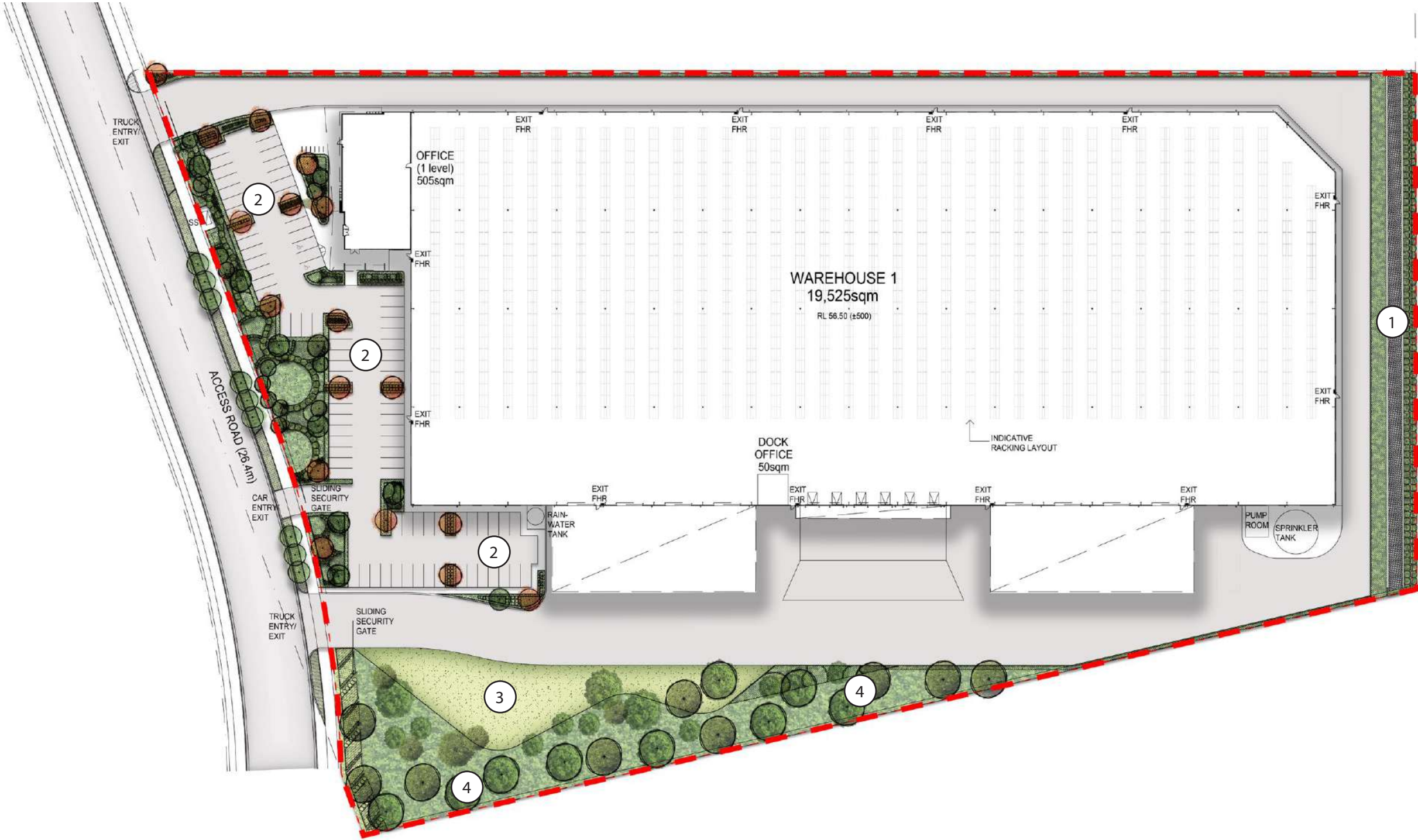


Stage 1 Masterplan /  
Landscape Stage 1 Masterplan





Stage 1 /  
Warehouse 1 Landspace Plan



1 Boundary Planting with a mix of screening planting



2 Car Park with shade trees and groundcovers



3 Turfed Areas with planting to surround and line



4 Native planting to screen and line boundary



Stage 1 /  
Warehouse 1 Detail Plan



1 Planter Island



2 Carpark Planting



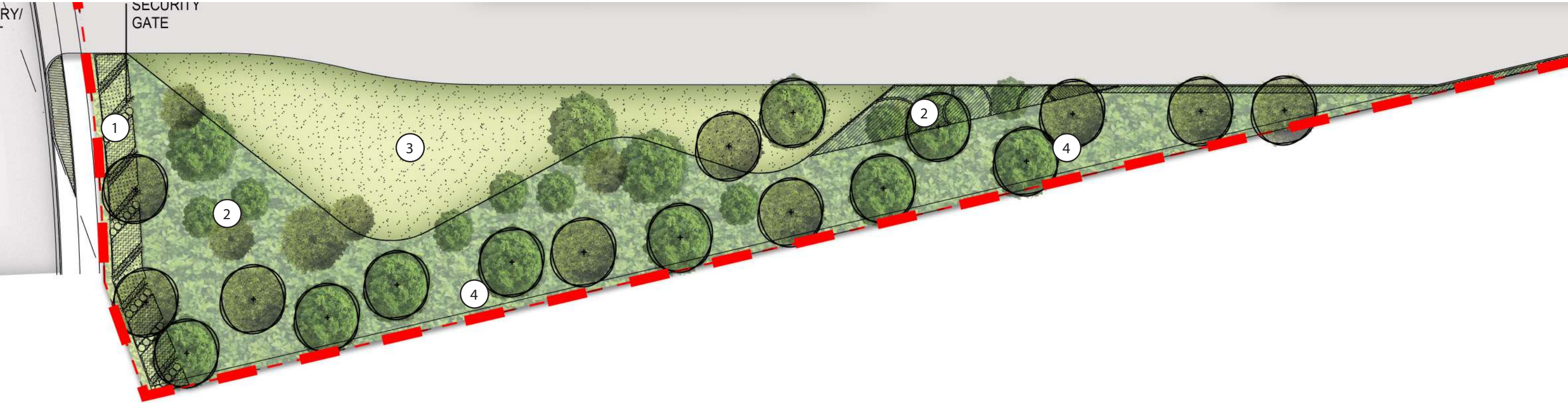
3 Low Groundcover Planting



4 Native Garden



Stage 1 /  
Warehouse 1 Detail Plan



1 Streetscape Frontage



2 Native Planting Mix Garden



3 Turfed Area Surrounded by  
Groundcovers and Shrubs

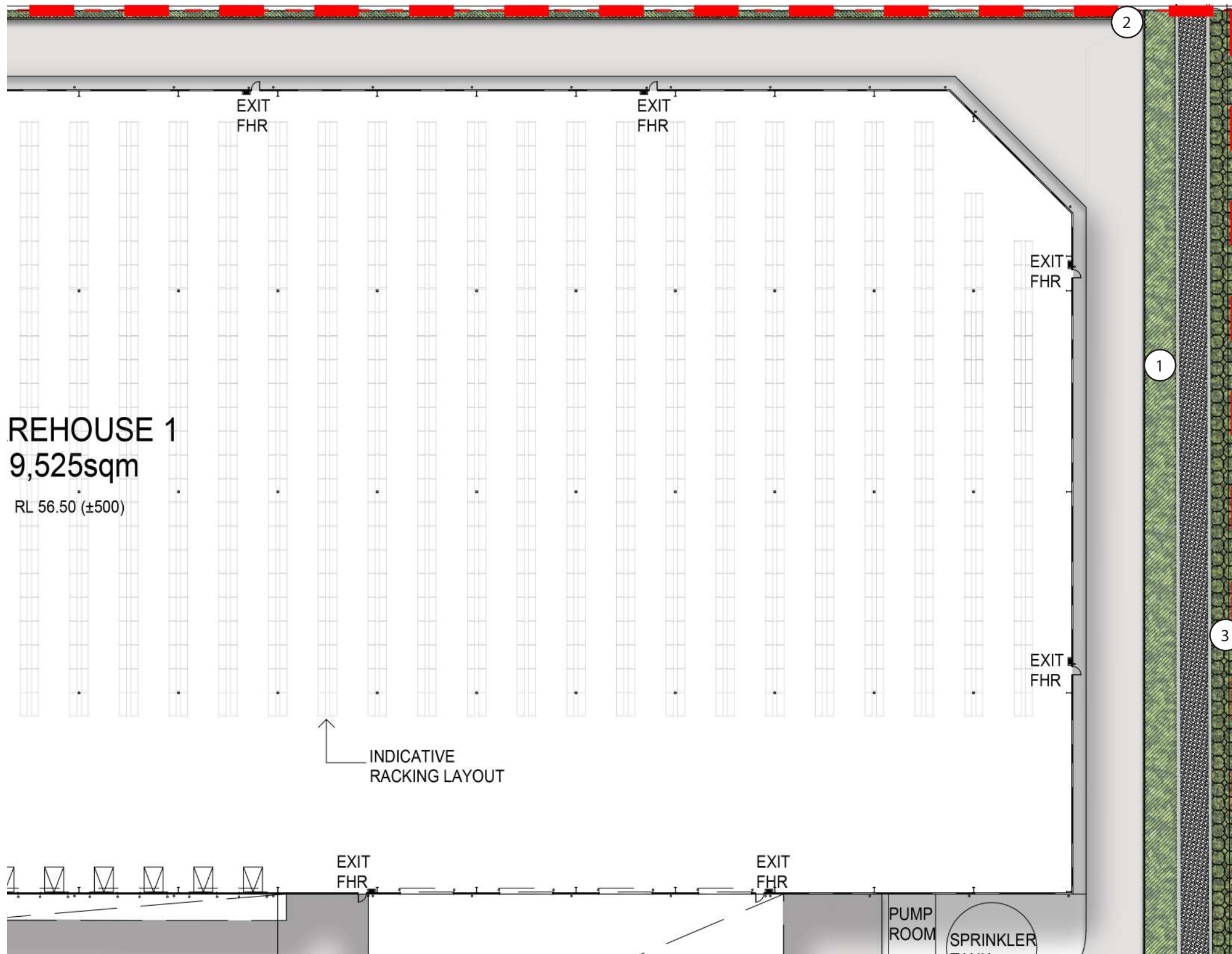


4 Native Screening Planting



## Stage 1 /

## Warehouse 1 Detail Plan



1 Mix of Low Shrubs and Groundcovers



2 Low Groundcover



### 3 Shrubs and Groundcovers



SITE IMAGE  
Landscape Architects



Yiribana Logistics Estate | Landscape Stage 1

Client  
Architect  
Site Image Job Number

The GPT Group  
SBA Architects  
SS21-4623

Drawing Number	0021
Issue	C
Date	01.06.2021



Stage 1 / Warehouse 1 Indicative Plant Schedule

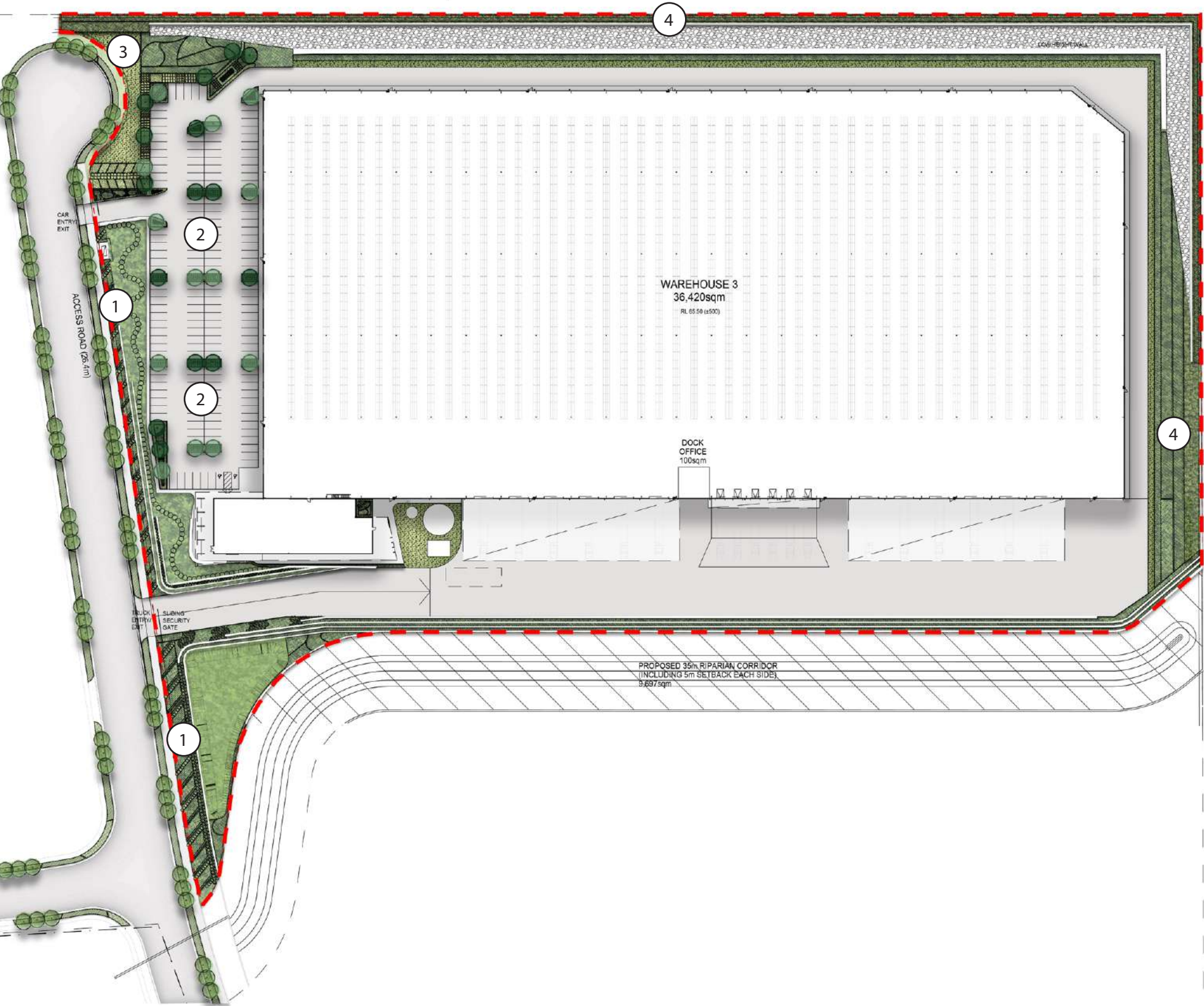
Planting Schedule

Botanic Name	Common Name	Mature Size (h x w) (m)
TREES		
<i>Corymbia maculata</i>	Spotted Gum	30 x 8
<i>Eucalyptus eugenioides</i>	Thin-leaved Stringybark	30 x 8
<i>Lagerstroemia 'Natchez'</i>	Crepe Myrtle	8 x 6
<i>Melaleuca styphelioides</i>	Prickly Leaved Paperbark	8 x 6
<i>Pyrus calleryana 'Chanticleer'</i>	Capital Ornamental Pear	11 x 6
SHRUBS & ACCENTS		
<i>Acmena smithii</i> var. minor	Lilly Pilly	2 x 2
<i>Alternanthera dentata</i> 'Little Ruby'	Little Ruby Alternanthera	.15 x .6
<i>Callistemon 'Endeavour'</i>	Bottlebrush	2 x 3
<i>Dodonaea viscosa subsp. cuneata</i>	Wedge-leaf Hop-bush	3 x 1
<i>Loropetalum 'Purple Pixie'</i>	Purple Pixie Loropetalum	.5 x 1.2
<i>Melaleuca linariifolia 'Claret Tops'</i>	Honey Myrtle	1 x 1
<i>Phormium tenax 'Purpureum'</i>	Bronze Flax	1.5 x 1
<i>Pittosporum 'Miss Muffet'</i>	Miss Muffet Pittosporum	1 x 1
<i>Raphiolepis 'Oriental Pearl'</i>	Oriental Pearl Indian Hawthorn	1 X 1
<i>Westringia fruticosa</i>	Coastal Roasemary	2 x 2
<i>Viburnum odoratissimum</i>	Sweet Vibirnum	1.5 x 1
GRASSES AND GROUNDCOVERS		
<i>Carpobrotus glaucescens</i>	Pigface	.15 x 1
<i>Dichondra repens</i>	Kidney Weed	.1 x 1
<i>Gazania tomentosa</i>	Silver Gazania	.15 x 1
<i>Dietes grandiflora</i>	Wild Iris	.4 x .6
<i>Liriope 'Evergreen Giant'</i>	Evergreen Giant	.8 x .8
<i>Liriope 'Just Right'</i>	Liriope	.4 x .4
<i>Lomandra longifolia</i>	Matt Rush	1 x 1
<i>Myoporum parvifolium</i>	Creeping Boobialla	.3 x 2
<i>Poa 'Kingsdale'</i>	Tussock Grass	.3 x .6
<i>Pennisetum 'Nafray'</i>	Swamp Foxtail Grass	.6 x .6
<i>Trachelospermum jasminoides</i>	Star Jasmine	0.3 x 0.3





Stage 1 /  
Warehouse 3 Landscape Plan



1 Streetscape Frontage



2 Car Park with shade trees and groundcovers



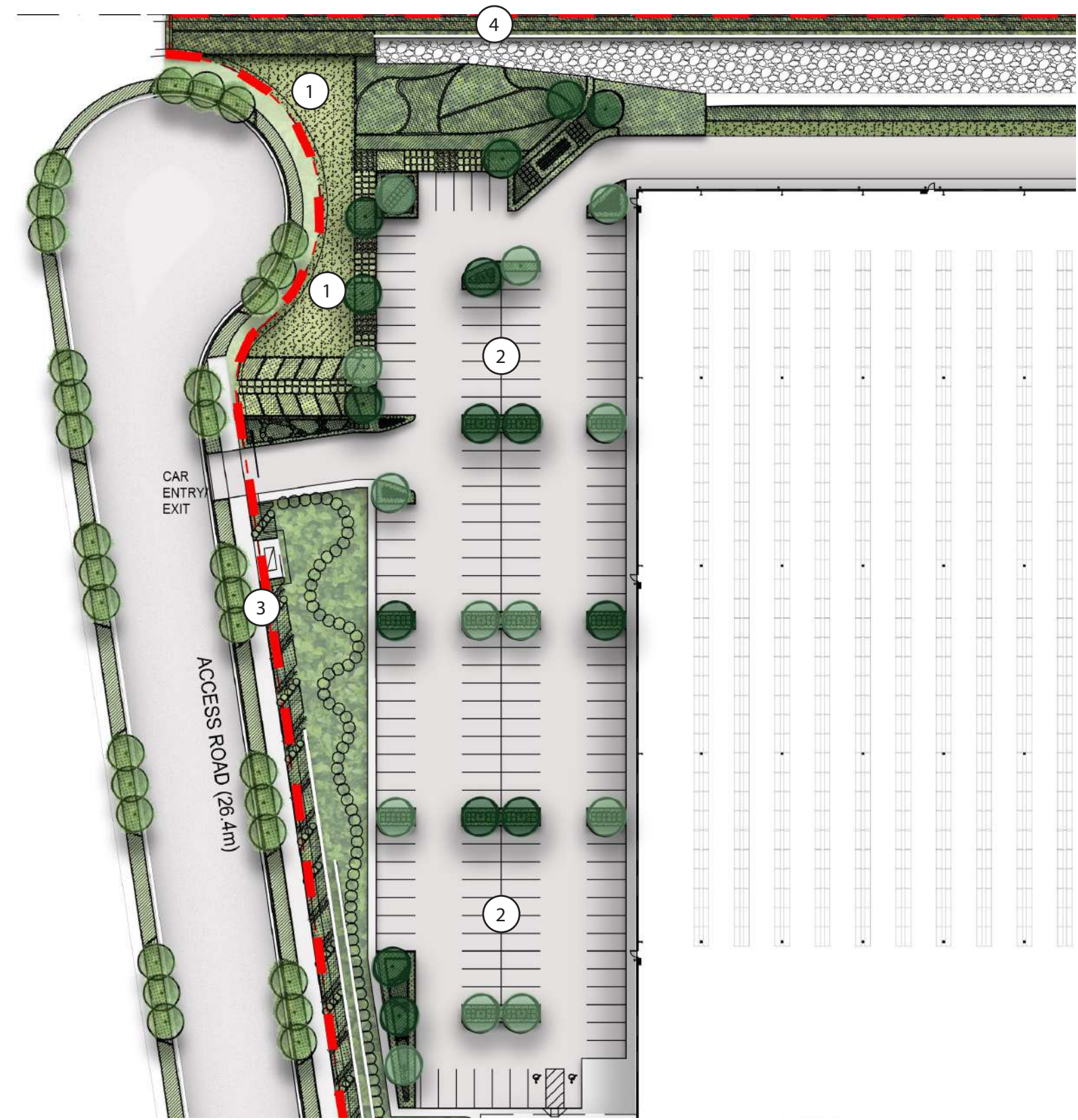
3 Turfed Areas with planting to surround and line



4 Native planting to line boundary



Stage 1 /  
Warehouse 3 Detail Plan



1 Lawn



2 Planted Carpark



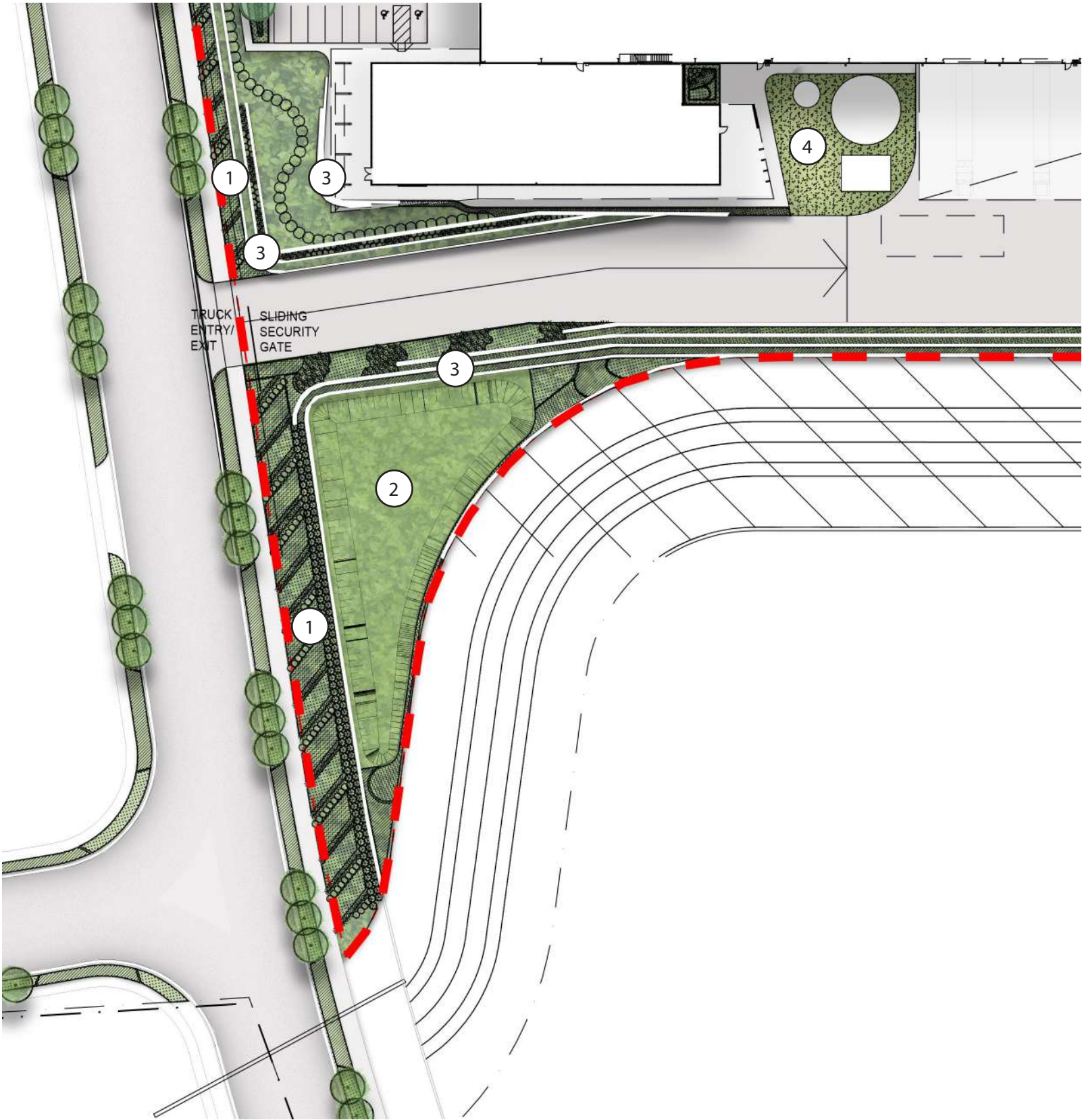
3 Street Frontage



4 Native Planting for screening



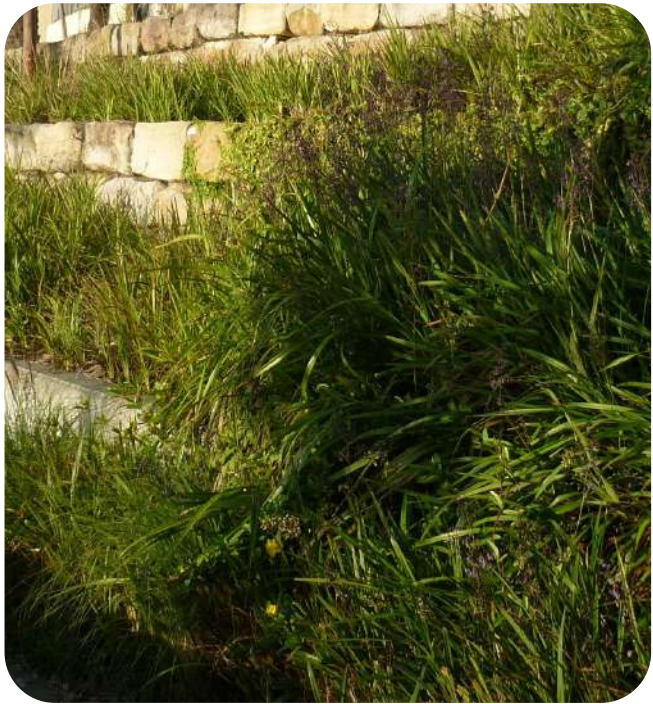
Stage 1 /  
Warehouse 3 Detail Plan



1 Street Frontage



2 Bio Basin



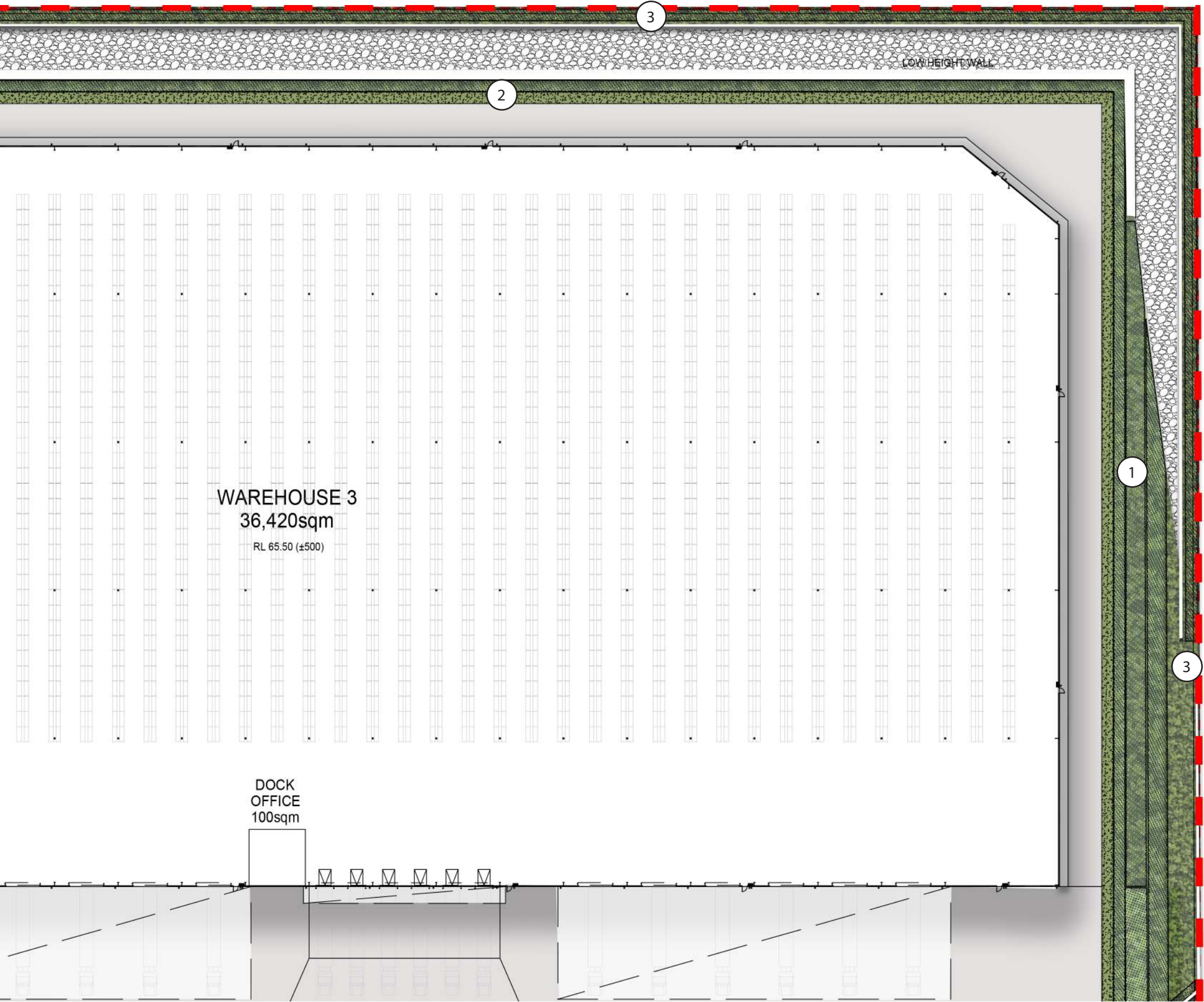
3 Planting Along Retaining Walls



4 Turf and Low Maintenance Groundcovers



Stage 1 /  
Warehouse 3 Detail Plan



1 Mix of Low Shrubs and Groundcovers



2 Mix of Groundcovers and Shrubs



3 Taller Shrubs



Stage 1 /  
Warehouse 3 Indicative Plant Schedule

Planting Schedule

Botanic Name	Common Name	Mature Size (h x w) (m)
TREES		
<i>Corymbia maculata</i>	Spotted Gum	30 x 8
<i>Eucalyptus eugenioides</i>	Thin-leaved Stringybark	30 x 8
<i>Lagerstroemia 'Natchez'</i>	Crepe Myrtle	8 x 6
<i>Melaleuca styphelioides</i>	Prickly Leaved Paperbark	8 x 6
<i>Pyrus calleryana 'Chanticleer'</i>	Capital Ornamental Pear	11 x 6
SHRUBS & ACCENTS		
<i>Acmena smithii</i> var. minor	Lilly Pilly	2 x 2
<i>Alternanthera dentata 'Little Ruby'</i>	Little Ruby Alternanthera	.15 x .6
<i>Callistemon 'Endeavour'</i>	Bottlebrush	2x3
<i>Callistemon 'Little John'</i>	Dwarf Bottle Brush	1 x 1
<i>Loropetalum 'Purple Pixie'</i>	Purple Pixie Loropetalum	.5 x 1.2
<i>Melaleuca linariifolia 'Claret Tops'</i>	Honey Myrtle	1 x 1
<i>Phormium tenax 'Purpureum'</i>	Bronze Flax	1.5 x 1
<i>Pittosporum 'Miss Muffet'</i>	Miss Muffet Pittosporum	1 x 1
<i>Raphiolepis 'Oriental Pearl'</i>	Oriental Pearl Indian Hawthorn	1 X 1
<i>Westringia fruticosa</i>	Coastal Roasemary	2 x 2
<i>Viburnum odoratissimum</i>	Sweet Viburnum	1.5 x 1
GRASSES AND GROUNDCOVERS		
<i>Carex inversa</i>	Knob Sedge	.1 x .1
<i>Carpobrotus glaucescens</i>	Pigface	.15 x 1
<i>Dichondra repens</i>	Kidney Weed	.1 x 1
<i>Gazania tomentosa</i>	Silver Gazania	.15 x 1
<i>Dietes grandiflora</i>	Wild Iris	.4 x .6
<i>Imperata cylindrica</i> var. major	Blady Grass	.75 x .3
<i>Juncus usitatus</i>	Common Rush	.6 x 1
<i>Liriope 'Evergreen Giant'</i>	Liriope	.8 x .8
<i>Liriope 'Just Right'</i>	Liriope	.4 x .4
<i>Lomandra longifolia</i>	Matt Rush	1 x 1
<i>Myoporum parvifolium</i>	Creeping Boobialla	.3 x 2
<i>Poa labillardieri</i>	Tussock Grass	.3 x .6
<i>Pennisetum 'Nafray'</i>	Swamp Foxtail Grass	.6 x .6
<i>Themeda australis</i>	Kangaroo Grass	1 x .5
<i>Trachelospermum jasminoides</i>	Star Jasmine	0.3 x 0.3

