



Aeronautical Impact Assessment

Yiribana Logistics Estate,
754 - 770 & 784 – 786 Mamre Road,
Kemps Creek, NSW.

Client

The GPT Group

LB00440

Final V1

10 May 2021

©Landrum & Brown Worldwide (Aust) Pty Ltd, 2021

All Rights Reserved.

The information contained in this document is confidential and proprietary to Landrum & Brown Worldwide (Aust) Pty. Ltd. Other than for evaluation and governmental disclosure purposes, no part of this document may be reproduced, transmitted, stored in a retrieval system, or translated into any language in any form by any means without the written permission of Landrum & Brown.

Version No.	Basis of issue	Author	Date
Draft v001	Initial draft for client review	PWW	1 March 2021
Draft v002	Updated with client feedback	PWW	16 April 2021
Draft v003	Updated Masterplan included	PWW	23 April 2021
Draft v004	Updated site address	PWW	29 April 2021
Draft v005	Updated following WSACo meeting	PWW	5 May 2020
Final V1	Final Report	PWW	10 May 2020

Contents

1	Introduction.....	4
1.1	The Development	4
2	Western Sydney Airport Airspace	6
	Airspace Overview	6
2.1	Obstacle Limitation Surfaces	7
2.2	PANS OPS Surfaces	8
3	ATC Surveillance System Performance	9
4	Navigation Aid Performance	9
5	ATC Communications	9
6	Roof Top Exhaust Plumes	10
7	The Planning Secretary’s Environmental Assessment Requirements (SEARS).....	10
7.1	Australian Noise Exposure Forecast (ANEF) Contours	10
8	Lighting and Reflectivity.....	14
8.1	Lighting	14
8.2	Reflectivity	14
9	Public Safety Areas.....	15
10	Wildlife Strikes.....	16
11	New South Wales State Environment Planning Policy (Western Sydney Aerotropolis) 2020	16
11.1	Aircraft Noise	17
11.2	Building Generated Wind Shear and Turbulence, Lighting Intensity Zones	17
11.2.1	Building Generated Wind Shear and Turbulence	17
11.2.2	Lighting Intensity	17
11.3	Wildlife Hazards.....	17
11.4	Wind Turbines.....	18
11.5	Airspace Operations	19
11.6	Public Safety.....	19
12	Conclusion	19
	Appendix A –Site Layout Diagram.....	20
	Appendix B – State Environmental Planning Policy Maps	22
	Appendix C – Assessment Methodology.....	27
	Appendix D – Glossary of Aeronautical Terms and Abbreviations	28

1 Introduction

1.1 The Development

The GPT Group has tasked Landrum & Brown Worldwide (Australia) Pty Ltd to prepare an Aeronautical Impact Assessment (AIA) for the proposed Yiribana Logistics Estate at 754 – 770 & 784 -786 Mamre Road, Kemps Creek, within the Penrith Local Government Area.

The development comprises 5 warehouses, hardstands and associated office sites with internal road infrastructure connected to Mamre Road.



Figure 1: Concept Overview (The GPT Group)

Initial planning of the buildings within the Yiribana Logistics Estate indicate a maximum building height of 20 m above ground level (AGL) on ground levels between approximately 41 m AHD and 67 m AHD. The maximum building elevation will therefore be approximately 87 m AHD.

The site is located approximately 7.5 km north east of the Aerodrome Reference Point for Western Sydney Airport (WSA) as per **Figure 2**.

This report considers:

- the likely impact of the development upon:
 - Obstacle Limitation Surfaces;
 - Draft PANS OPS Surfaces – Basic ILS;
 - Possible impact upon air traffic control (ATC) communications facilities, navigation aids and surveillance system coverage;

in accordance with National Airspace Safeguarding Framework Guidelines (NASF);

- the impact of the development upon the aviation requirements of The Planning Secretary's Environmental Assessment Requirements (SEARS) under Section 4.12(8) of the Environmental Planning and Assessment Act 1979; and
- the Western Sydney Aerotropolis State Environment Planning Policy 2020.

The AIA will support the aviation components an application to commence a State Significant Development (SSD) planning approval pathway, preparation of Precinct Wide Development Control and release of the SEARS for the site.

Consultation

The GPT Group is committed to providing WSACo with information regarding the development of the site at Mamre Rd. An initial meeting was held on 4 May 2021 which outlined the development and provided an opportunity for the group to understand some of WSACo's requirements and for WSACo to understand the nature of the activity at the site along with the staging of the construction of the development.

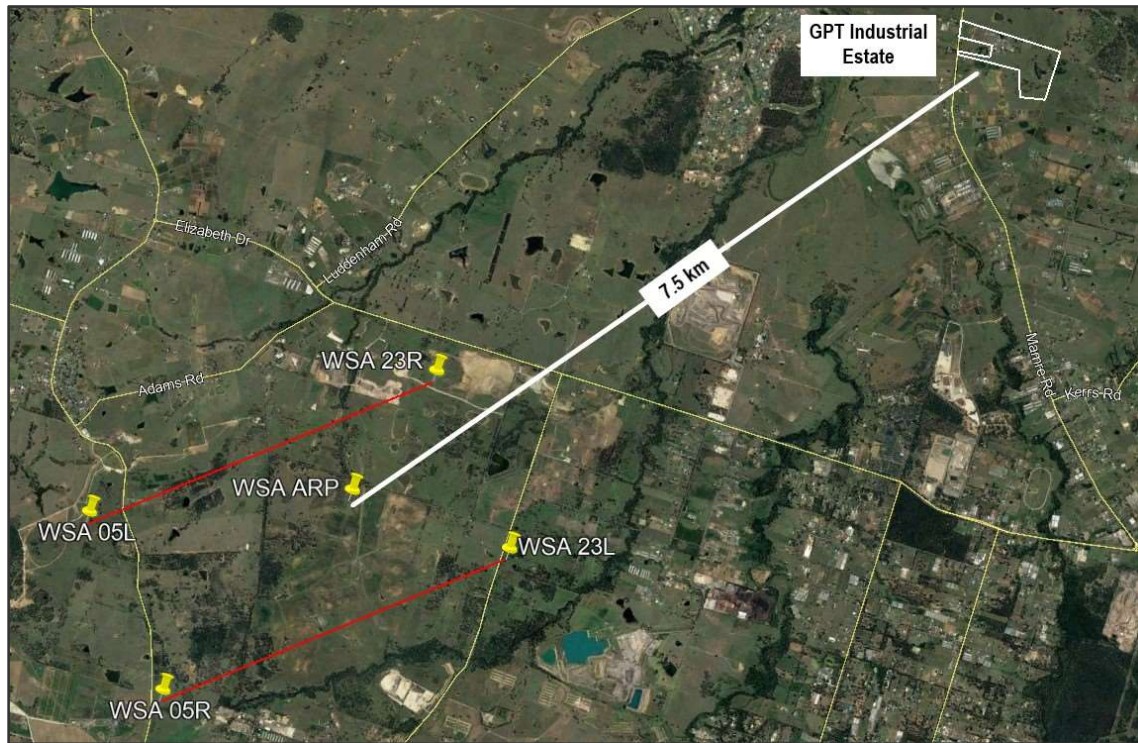


Figure 2: Location in relation to Western Sydney Airport (Google Earth)

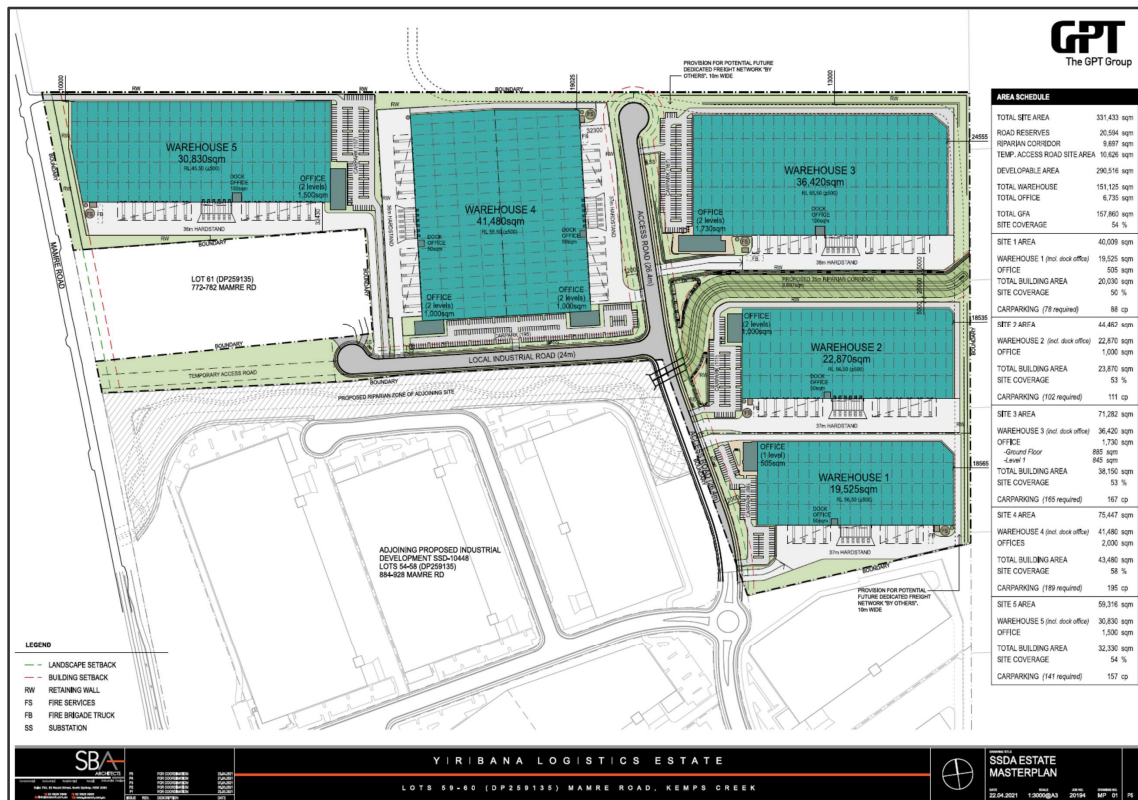


Figure 3: Site Layout (The GPT Group and SB Architects)

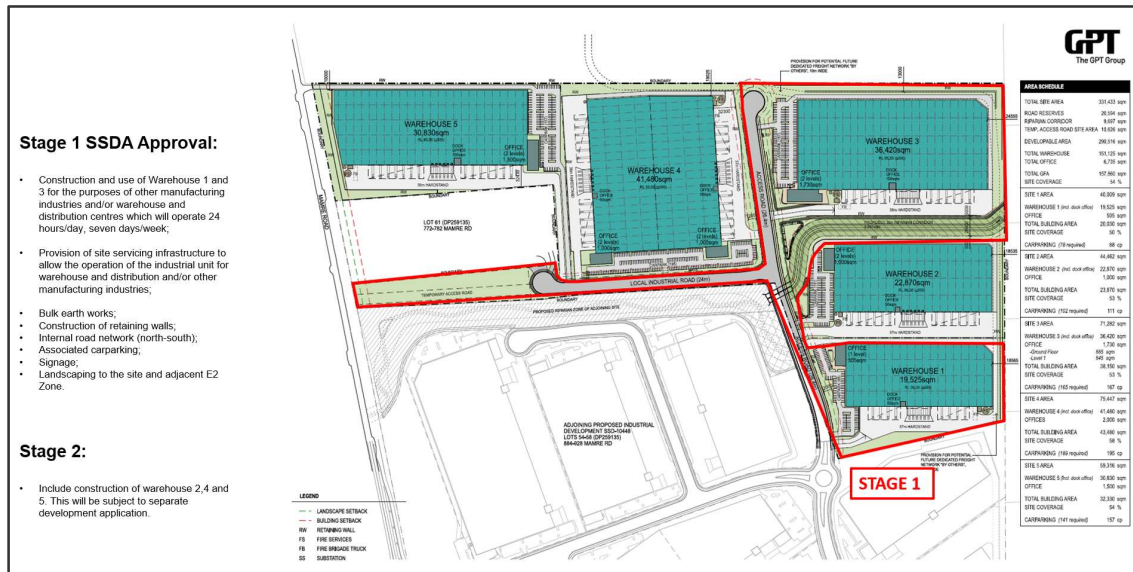


Figure 4: Site Layout Stage 1 (The GPT Group and SB Architects)

This document has been prepared in consideration of the likely Planning Secretary's Environmental Assessment Requirements (SEARs) that are sought to be issued for the proposal. **Table 1** summaries the key issues relevant to this report and how they have been responded to.

Key Issue	Requirements	Response/Reference
Airport Safeguarding	A risk assessment of the proposed development on airport operations and addressing related matters in the Western Sydney Aerotropolis State Environment Planning Policy 2020.	Section 7 of this report shows that the proposed industrial estate does not impact on the safety of flight operations, does not infringe Prescribed Airspace and is within the criteria for noise exposure within such a development.

Table 1: SEARS Compliance

2 Western Sydney Airport Airspace

Whilst the Runway locations have been planned, Obstacle Limitation Surfaces have been declared and provisional Instrument Landing System (Basic ILS) PANS OPS surfaces have been declared for WSA there is still the possibility that they may change slightly as the airport construction program progresses and consequently, the airport's Prescribed Airspace may also change slightly.

WSA data used to determine the probable Prescribed Airspace above the Yiribana Logistics Estate was determined from information published on WSA's website - <https://westernsydney.com.au/>

Major reports referenced are:

- Western Sydney Airport – Airport Plan 2016;
- Western Sydney Aerotropolis State Environmental Planning Policy 2020 (SEPP 2020);
- Airservices Australia – Western Sydney Airport Preliminary Airspace Management Analysis – 10 April 2015.

Airspace Overview

The Airports (Protection of Airspace Regulations) 1996 specifies volumes of Prescribed Airspace related to Federally leased airports such as Western Sydney Airport that protect them from uncontrolled obstacle growth that may have an adverse impact upon flight safety or the regularity of flight operations.

Prescribed Airspace for an airport is the airspace above any facet of the Obstacle Limitation Surfaces (OLS) or the PANS OPS (Procedures for Air Navigation Services – Aircraft Operations) surfaces for an airport, or the Radar Terrain Clearance Chart (RTCC) protection surfaces.

Flight operations at an airport are protected from uncontrolled obstacle intrusion by Obstacle Limitation Surfaces (OLS) and the PANS OPS (Procedures for Air Navigation Services – Aircraft Operations) surfaces which are published in Airport Master Planning Documents for the use of local planning authorities to show areas where building activity requires consideration of aviation requirements and in Aeronautical Publications for the use of pilots during pre-flight planning processes and in-flight operations to ensure that the airport is capable of supporting their planned operation.

The OLS are conceptual surfaces associated with runways that are designed to protect aircraft operations that are conducting visual take-off and landing operations from unrestricted obstacle growth. Intrusions into some areas of the OLS can be approved subject to an aeronautical study that shows that the obstacle does not impact upon flight safety or the regularity of operations at the airport.

The PANS OPS surfaces are designed beneath instrument approach and departure flight paths with a prescribed minimum obstacle clearance above the obstacles or terrain. They provide an obstacle free flight path to enable safe and efficient flight operations in Instrument Meteorological Conditions (IMC) during which flight crews cannot necessarily see the ground or obstacles and they must rely upon aircraft instrumentation to determine their position in relation to navigation aids and runways.

Infringements into Prescribed Airspace requires the approval of the Department of Infrastructure, Transport, Regional Development and Communications (DITRDC), following an application to the aerodrome operator which is then referred to the Civil Aviation Safety Authority (CASA) and Airservices Australia (AsA). DITRDC will then assess the information from CASA and AsA to determine the matter.

Permanent infringement of PANS OPS protection surfaces are generally not supported by the aviation authorities, however, temporary activities such as construction cranes may be able to be approved subject to support from the airport, Airservices Australia and CASA for limited periods of time. In some cases, the PANS OPS surfaces can be amended to accommodate important infrastructure.

If the infringement is shown to impact on aviation safety or regularity of aircraft operations, it is unlikely to be approved.

2.1 Obstacle Limitation Surfaces

The OLS at Western Sydney Airport comprises:

- conical surface;
- inner horizontal surface (IHS);
- approach surface for each runway;
- inner approach surface for each runway;
- transitional surface for each runway;
- inner transitional surface;
- baulked landing surface; and
- take-off climb surface for each runway.

A portion of the Yiribana Logistics Estate is located beneath the Approach Surface to Runway 23R, the Take-Off Surface for Runway 05L and the Outer Horizontal Surface.

The height of the lowest of these surfaces above the site ranges from approximately 198 m AHD at Mamre Road to 230.5 m AHD at the northern edge of the industrial estate along Mamre Road.

Figure 5 is an inset from the final DPIE SEPP 2020 OLS Map, that shows the location of the industrial estate and the relevant OLS.

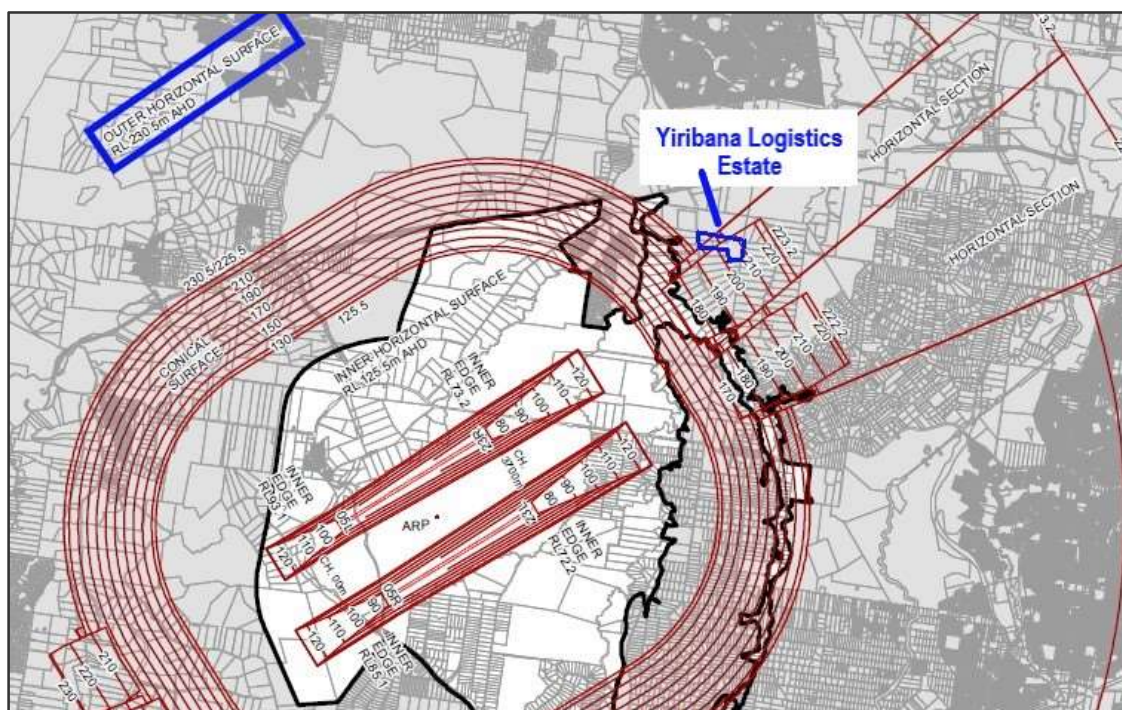


Figure 5: Obstacle Limitation Surfaces Map (Source: State Environmental Planning Policy (Western Sydney Aerotropolis) 2020)

With building and lighting poles heights projected to be beneath 100 m AHD there will not be any infringements of the OLS for Western Sydney Airport. There is also adequate clearance for typical construction cranes to be used on the site.

2.2 PANS OPS Surfaces

Draft PANS OPS surfaces related to the Basic ILS surfaces and the Standard Instrument Departures (SID) for each runway have been declared for the preliminary phase of the construction and operation of the airport.

The Basic ILS surfaces are very conservative and may be infringed if an assessment of the Obstacle Assessment Surfaces (OAS) or application of the Collision Risk Model determines a safe result for the overall obstacle environment surrounding the airport.

The lowest Basic ILS surfaces above the industrial estate is related to the Runway 23R ILS and is at a height of 223 m AHD.

The SID procedures have PANS OPS surface determined by the Procedure Design Gradient (PDG) that is the minimum climb gradient that aircraft are required to perform to in order to ensure obstacle clearance during the initial climb after take-off.

The lowest SID PANS OPS surface above Mamre road is 217 m AHD increasing to approximately 195 m.

With building heights projected to be beneath 120 m AHD there will not be any infringements of the PANS OPS surfaces for Western Sydney Airport.

Other instrument approach procedures will be promulgated for WSA once construction of the first runway, Runway 05L/23R, nears completion. RNAV (GNSS) and RNP-AR (see Appendix C) approached are likely to be implemented for both runways. Obstacle clearance in the area over the Yiribana Logistics Estate is likely to be in the order of 75 m above any part of the highest structure within the estate, providing adequate clearance to not impact on the efficiency of future approach procedures.

It is likely that any industrial estate activities, including construction crane activity to a height of approximately 15 m above any building within the estate, will not infringe either the OLS or the PANS OPS surfaces above the estate due to the large margin above the proposed buildings.

Summary: The proposed development at the Yiribana Logistics Estate will not infringe the OLS or PANS OPS surfaces at Western Sydney Airport, the lowest of which is approximately 208 m AHD.

3 ATC Surveillance System Performance

The nearest ATC Surveillance equipment (Terminal Area Radar - TAR) is located at Cecil Park, approximately 5.7 km to the south east of the development site.

Surveillance System	Distance from development	Antenna Elevation (AHD)	Clearance Plane Elevation at development site Distance x Tan 0.5° + TAR elevation
Cecil Park TAR	5880 m	200.5 m	251.8 m AHD

Table 2: Surveillance System Clearance Plane

It is likely that a ground surveillance system will be installed on the WSA site to monitor and control aircraft and vehicular traffic on the surface of the airport. The Yiribana Logistics Estate will be located well beyond the airport boundary and will not impact the operation of such a surveillance system.

Summary: The building and the cranes will not have an impact upon ATC Surveillance systems.

4 Navigation Aid Performance

Instrument Landing System (ILS), Distance Measuring Equipment (DME) and Ground Based Augmentation System (GBAS) are planned at Western Sydney Airport.

It is unlikely that any other ground-based navigation system will be installed at the airport due to the modern develops of GPS based navigation systems.

Airservices Australia operates these navigation systems and protects their signal integrity by applying Building Restricted Area (BRA) criteria to the critical areas around the navigation aid antenna.

The ILS BRA extend to 1000 m from the facility, part of which is located close to the runway end.

The GBAS BRA extend to 3 km from the facility which is planned to be based in the middle of the airport but may move to the north side of the airport as the second runway is developed.

The DME BRA extend to 1500 m from the facility which is planned in the middle of the airport.

The closest part of the industrial estate at Mamre Rd is located approximately 6.1 km from the nearest of the navigation systems at the airport and is therefore beyond the BRA associated with all of them.

Summary: The Yiribana Logistics Estate will not have any impact upon the performance of navigation aids installed at Western Sydney Airport.

5 ATC Communications

Reliable ATC communications require a clear line-of-sight path between the base station and aircraft and vehicles using the facilities.

The Area of Interest for the ATC Communication facilities includes all developments between 100 m and 2000 m that exceed a height of 10 m above ground level at the base of the VHF/UHF antenna.

The closest part of the industrial estate at Mamre Rd is located approximately 7.5 km from the likely location of ATC Communication facilities on the airport.

Summary: The Yiribana Logistics Estate will not have any impact upon the performance of ATC Communications systems installed at Western Sydney Airport.

6 Roof Top Exhaust Plumes

Part 139 of the Civil Aviation Safety Regulations 1988 (CASR 1988) provides that CASA may determine that a gaseous efflux having a velocity in excess of 4.3 m/s is, or will be, a hazard to aircraft operations because of the velocity of the efflux.

In this case, any exhaust plume with a velocity in excess of 4.3 m/s from any vent on top of the building is unlikely to reach the height of the lowest PANS OPS or OLS.

Anticipated activity within the estate is not likely to produce such an exhaust plume.

7 The Planning Secretary's Environmental Assessment Requirements (SEARS)

NSW Planning Secretary's Environmental Assessment Requirements generally requires a risk assessment of the proposed development on airport operations and addresses related matters in the Western Sydney Aerotropolis State Environmental Planning Policy 2020.

This report has assessed the probable impacts caused or not caused by the proposed Yiribana Logistics Estate development upon the operation of Western Sydney Airport, associated flight paths and Prescribed Airspace.

The report clearly shows that the development of the Yiribana Logistics Estate will not have any impact upon Western Sydney Airport's Prescribed Airspace and will not affect flight safety or the regularity of operations at the airport.

7.1 Australian Noise Exposure Forecast (ANEF) Contours

Australian Standard AS 2021:2015 – Acoustics – Aircraft Noise Intrusion – Building Siting and Construction provides guidance on the siting and construction of buildings in the vicinity of airports to minimise aircraft noise intrusion. It describes the process that should be followed in producing ANEF charts for use in applying this standard,

The projected ANEF contours for Western Sydney Airport are described in the Western Sydney Airport Plan section 2.3.3 and shown in **Figures 6 to 11** below.

DITRDC provides a Noise Modelling Tool on its Western Sydney Airport website. **Table 3** and the associated figures shows the ANEC contour levels for each particular stage of development of the airport and the particular runway in use.

The Yiribana Logistics Park is located outside the ANEC Zones where the predicted noise value is less than 20.

It would be an acceptable activity under AS 2021-2015.

Building type	ANEF zone site		
	Acceptable	Conditional	Unacceptable
House, home unit, flat, caravan park	Less than 20 ANEF (Note 1)	20 to 25 ANEF (Note 2)	Greater than 25 ANEF
Hotel, motel, hostel	Less than 25 ANEF	25 to 30 ANEF	Greater than 30 ANEF
Hostel, school, university	Less than 20 ANEF (Note 1)	20 to 25 ANEF (Note 2)	Greater than 25 ANEF
Hospital, nursing home	Less than 20 ANEF (Note 1)	20 to 25 ANEF	Greater than 25 ANEF
Public building	Less than 20 ANEF (Note 1)	20 to 30 ANEF	Greater than 30 ANEF
Commercial building	Less than 25 ANEF	25 to 35 ANEF	Greater than 35 ANEF
Light industrial	Less than 30 ANEF	30 to 40 ANEF	Greater than 40 ANEF
Other industrial	Acceptable in all ANEF zones		

Table 3: Building Type Acceptability Table (AS2021-2015)

The following noise contour diagrams are sourced from The Department of Infrastructure, Transport, Regional Development and Communications (DITRDC) noise modelling tool for Western Sydney Airport. They clearly show that the proposed Yiribana Logistics Estate is located outside of all of the noise contours.

WSA Stage 1 (Year 2030)

Noise predictions for Stage 1 (2030) represent the anticipated noise exposure levels associated with an airport handling about 10 million annual passengers (similar to the size of Adelaide Airport). A single runway would be constructed initially. (DITRDC)

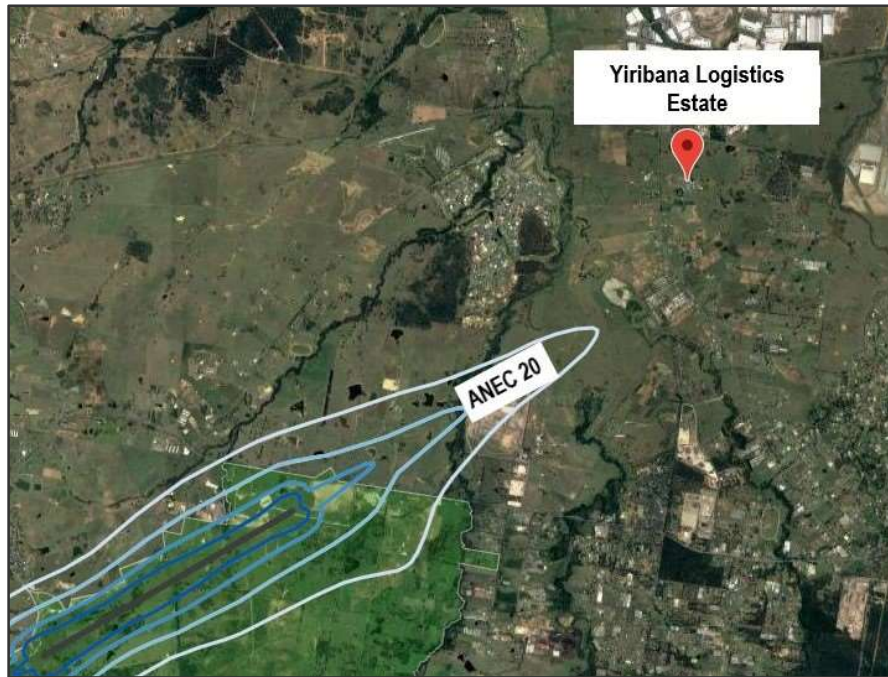


Figure 6: Runway 05 – 2030 Contour



Figure 7: Runway 23 – 2030 Contour

Stage 1 Additional Capacity (One Runway Year 2050)

Noise predictions for the year 2050 consider the anticipated growth of WSA. This scenario considers noise exposure levels at a time when the initial single runway would likely be approaching its capacity (approximately 37 million annual passengers). (DITRDC)

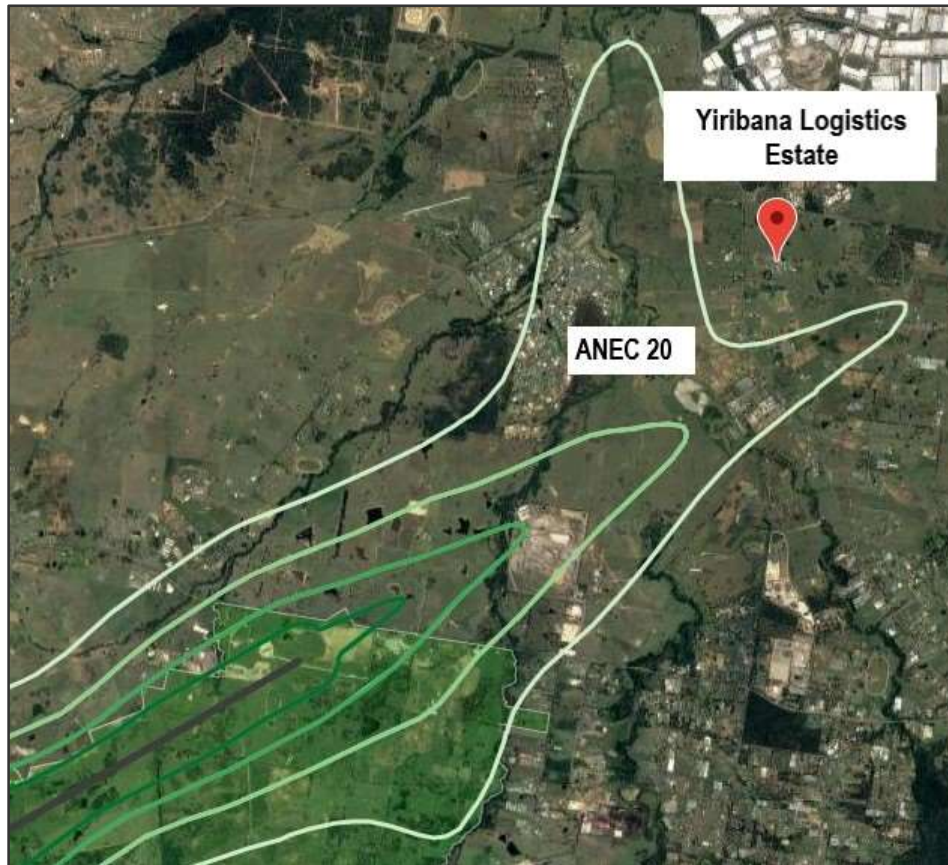


Figure 8: Runway 05 – 2050 Contour

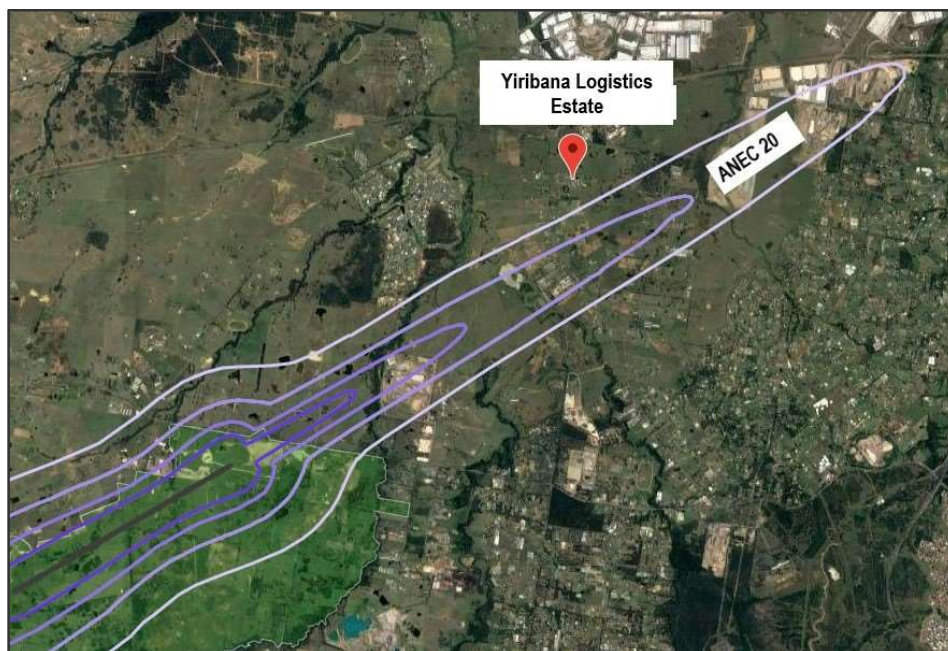


Figure 9: Runway 23 - 2050 Contour

Long term (Year 2063)

Noise predictions for the long-term development (approx. year 2063). The long-term development would operate with two runways. (DITRDC)

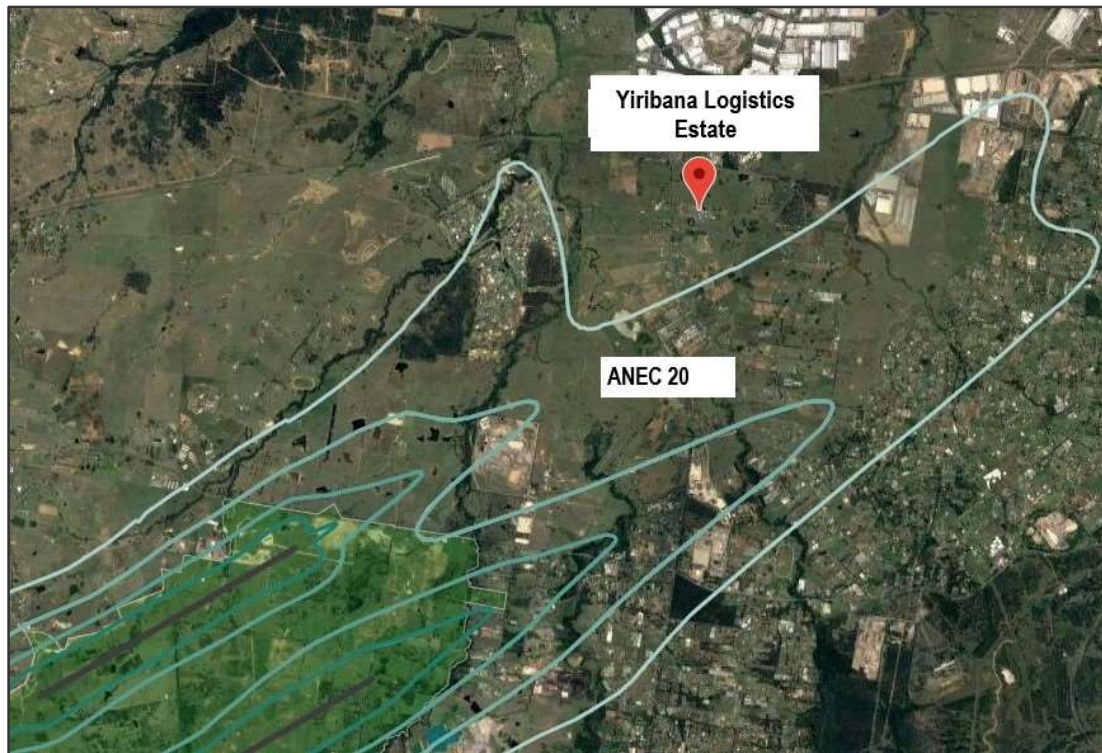


Figure 10: Runway 05 – 2063

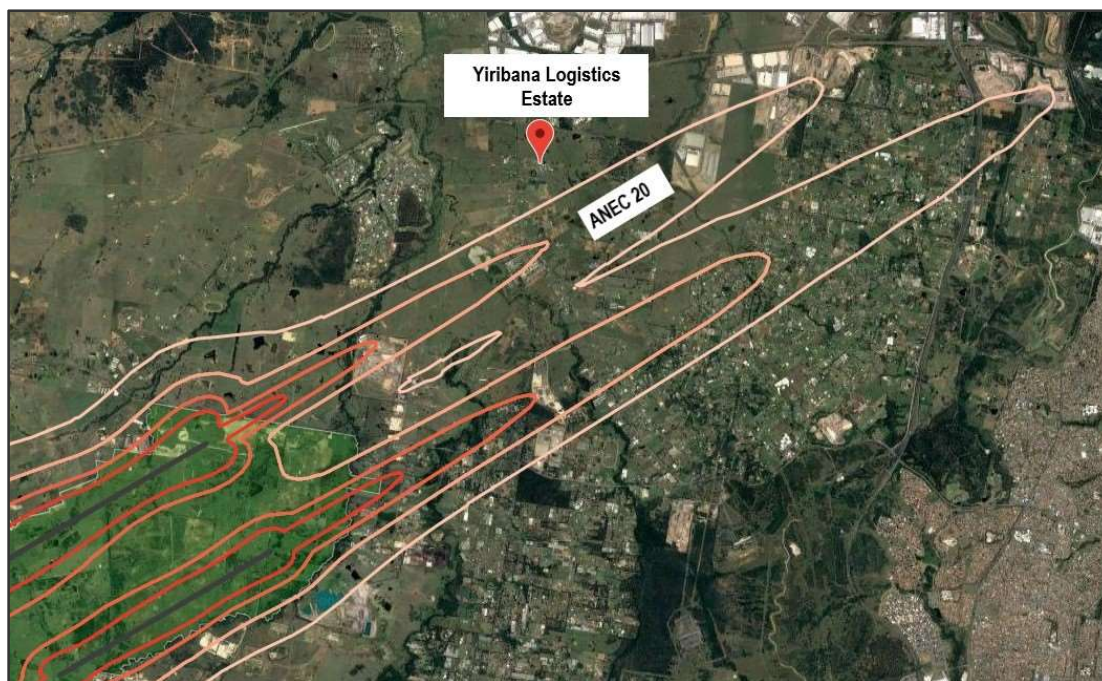


Figure 11: Runway 23 – 2063

8 Lighting and Reflectivity

8.1 Lighting

NASF Guideline E – *Managing the Risk of Distraction to Pilots from Lighting in the Vicinity of Airports*, provides guidance to address the risk of distractions to pilots from lighting and light fixtures near airports.

The guideline relates to lighting intensity within four light control zones all of which are within 6 kilometres of the centre of each runway. **Figure 12** depicts those zones.

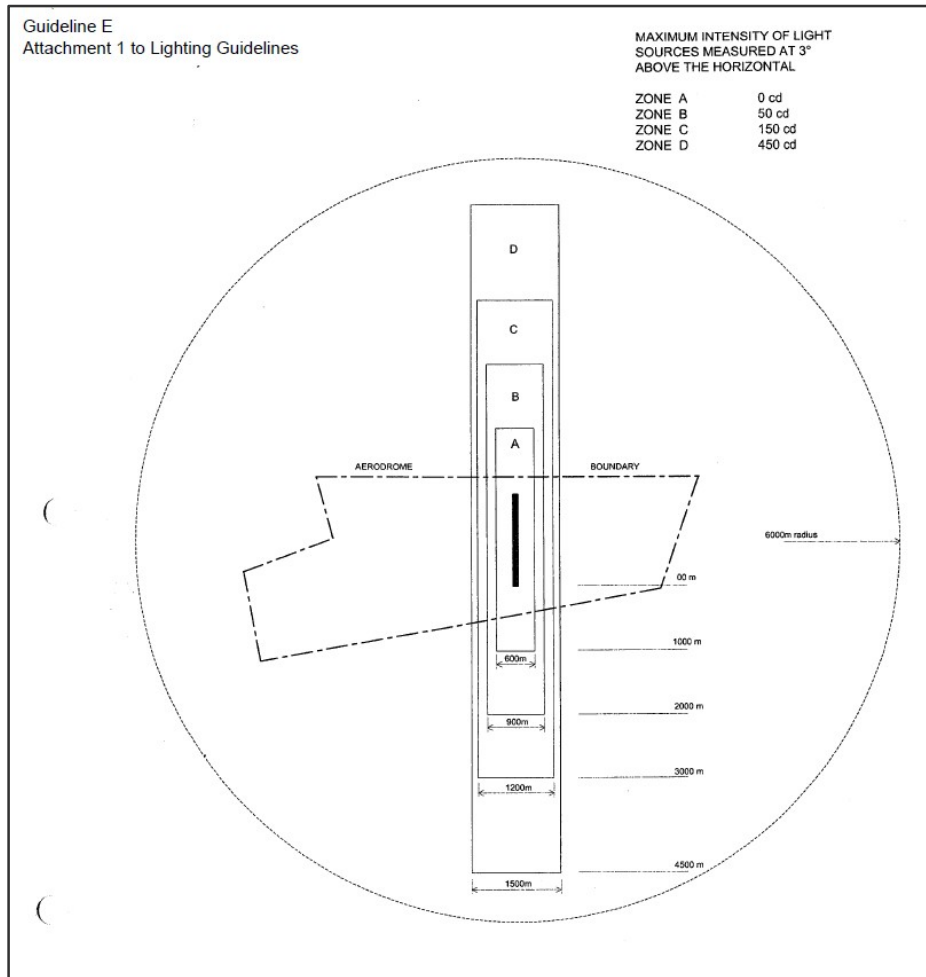


Figure 12: NASF Guideline E Lighting Zones

The Mamre Road side of the Yiribana Logistics Estate are the closest points to the Western Sydney Airport and is approximately 7.5 km from the centre of Runway 05L/23R.

The Yiribana Logistics Estate does not lie within any of the NASF light zones and therefore no special lighting requirements apply.

Lighting requirements for WSA are also addressed under the SEPP 2020 requirements in Section 11.2.2.

8.2 Reflectivity

There are no requirements in any Australian aviation regulations regarding the reflectivity of building surfaces in the vicinity of airports.

The movement of the sun causes reflections from many surfaces including roads, lakes, cars, aircraft and even wet grass paddocks.

CASA often requires airports operators to assess solar farm installations for glint and glare impacts to pilots using a USA Federal Aviation Administration approved software tool but as the Yiribana Logistics Estate is located 7.5 km from the airport, any such glint and glare is unlikely to have an adverse effect on pilot eyesight to the extent that would potentially cause a hazard.

Pilots, airline operators and airline manufacturers are well aware of glare both within the atmosphere when the sun is low or reflecting off clouds or mist and from ground-based man-made and natural objects.

There are many potential sources of sun reflections in the area surrounding the proposed Yiribana Logistics Estate including large sheds and dams.

The location of the proposed Yiribana Logistics Estate is not in the immediate vicinity of any of the proposed runways at Western Sydney Airport and therefore any reflections from the estate are unlikely to cause a hazard greater than what already exists today.

9 Public Safety Areas

Public Safety Areas (PSA) can reduce the already low risk of an air transport accident affecting people who live, work or travel in close proximity to airports.

A PSA is a designated area of land at the end of an airport runway within which development may be restricted in order to control the number of people on the ground at risk of injury or death in the event of an aircraft accident on take-off or landing.

These risks are also considered for developments and emergency management in the vicinity of a range of existing or proposed industrial sites that can give rise to adverse public safety outcomes.

The Yiribana Logistics Estate is located outside of the designated PSAs associated with the runways at WSA.

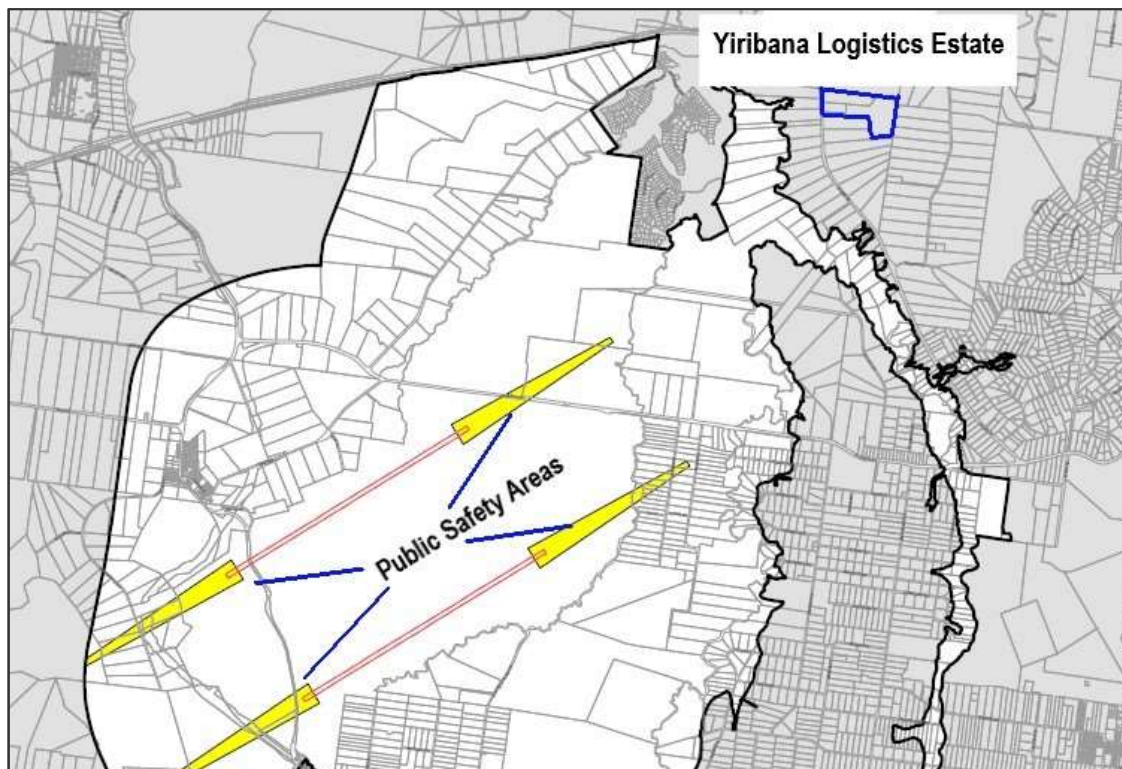


Figure 13: WSA Public Safety Areas (SEPP 2020)

10 Wildlife Strikes

NASF Guideline C – Managing the Risks of Wildlife Strikes in the Vicinity of Airports provides guidelines to manage the risk of collisions between wildlife and aircraft at or near airports where that risk may be increased by the presence of wildlife-attracting land uses.

The nature of the proposed Yiribana Logistics Estate does not include large dams, large waterbodies, wastewater treatment plants, parks or biodiversity conservation sites.

There is an E2 corridor between warehouse 2 and 3. This includes a creek and trees etc. Further there may be a water basin located at the front of the property. This is not considered to be an additional attractor to wildlife, as compared to the existing nature of the site, and is unlikely to increase the collision risk with aircraft overflying the estate.

The land where the Yiribana Logistics Estate is planned to be located is currently farm allotments and open vegetation paddocks. The industrial estate will consume a significant amount of this grassland and farming activity, effectively reducing the amount of wildlife present in the area that could cause a hazard to overflying aircraft.

The developer is assessing the appropriate types of flora that will enhance the visual features of the estate without being an attractant for birds or bats and not encouraging fauna such as rats and mice, being recognised as food, that would attract birds to the site.

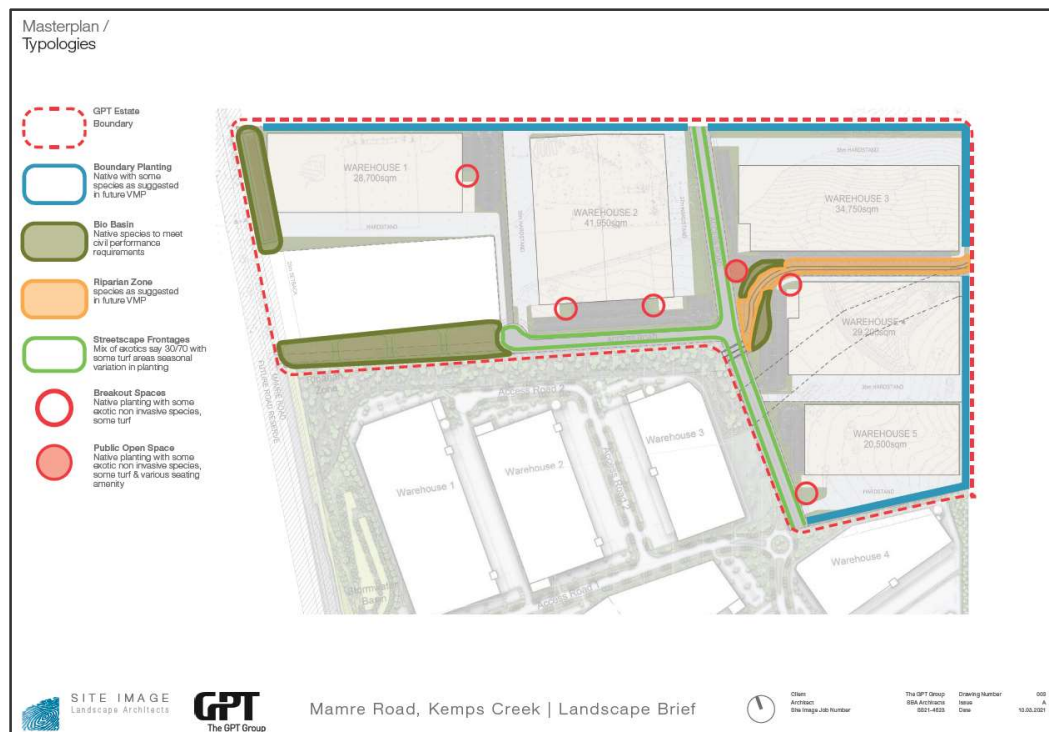


Figure 14: Landscape Draft Master Plan (The GPT Group)

11 New South Wales State Environment Planning Policy (Western Sydney Aerotropolis) 2020

This Policy commenced on 1 October 2020 and is published on the NSW legislation website.

This section addresses Part 3 – Development Controls – Airports Safeguards.

Full diagrams are included in the appendix B.

11.1 Aircraft Noise

The objectives of this clause are:

- To prevent certain noise sensitive development on land near the airport; and
- To minimise the impact of aircraft noise for other noise sensitive development; and
- To ensure that land use and development near the airport do not hinder or have other adverse impacts on the ongoing, safe and efficient 24 hours a day operation of the airport.

The Yiribana Logistics Estate is located outside of the ANEF/ANEC contours and therefore allow for the development of non-noise sensitive areas as detailed in section 7.1 of this report.

11.2 Building Generated Wind Shear and Turbulence, Lighting Intensity Zones

11.2.1 Building Generated Wind Shear and Turbulence

The objective of these clauses is to safeguard airport operations from wind shear and turbulence generated by buildings that could cause a hazard to aircraft operations during the final stages of flight prior to landing or just after take-off.

The development site is located outside of the Windshear Assessment Trigger Area and will not have any impact on turbulence at Western Sydney Airport.

11.2.2 Lighting Intensity

The objective of this clause is to safeguard Airport operations from the risk of lighting and reflectivity distractions for pilots.

The Yiribana Logistics Estate is located outside of the Light Control Zones shown on **Figure 15**.

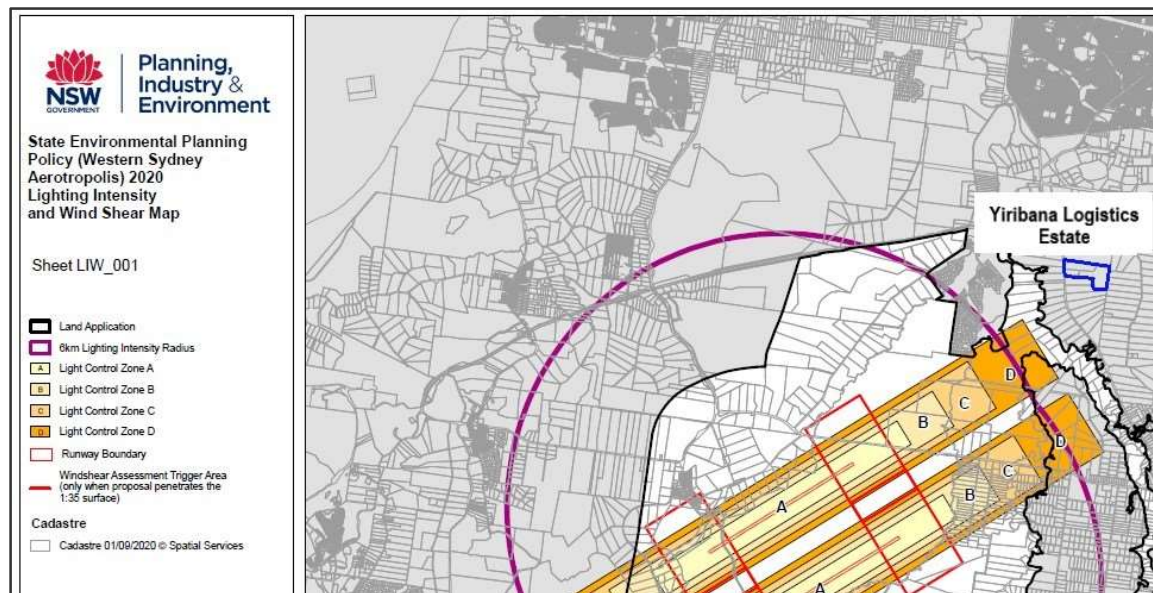


Figure 15: WSA SEPP 2020 Windshear Assessment Trigger Area and Lighting Zones

11.3 Wildlife Hazards

The objective of this clause is to regulate development on land surrounding the Airport where wildlife may present a risk to the operation of the Airport.

The clause specifies relevant developments that must be approved by the consent authority within a 13 km wildlife buffer zone.

These include:

- agricultural produce industries;
- aquaculture;
- camping grounds;
- eco-tourist facilities;
- garden centres;
- intensive livestock agriculture;
- intensive plant agriculture;
- livestock processing industries;
- plant nurseries;
- recreation facilities (major);
- recreation facilities (outdoor);
- sewage treatment plants;
- waste or resource management facilities that consist of outdoor processing, storage or handling of organic or putrescible waste;
- water storage facilities.

The Yiribana Logistics Estate lies within the 13 km wildlife buffer zone as shown in **Figure 16**.

None of the activities listed in the Wildlife Hazards clause are anticipated at the Yiribana Logistics Estate.

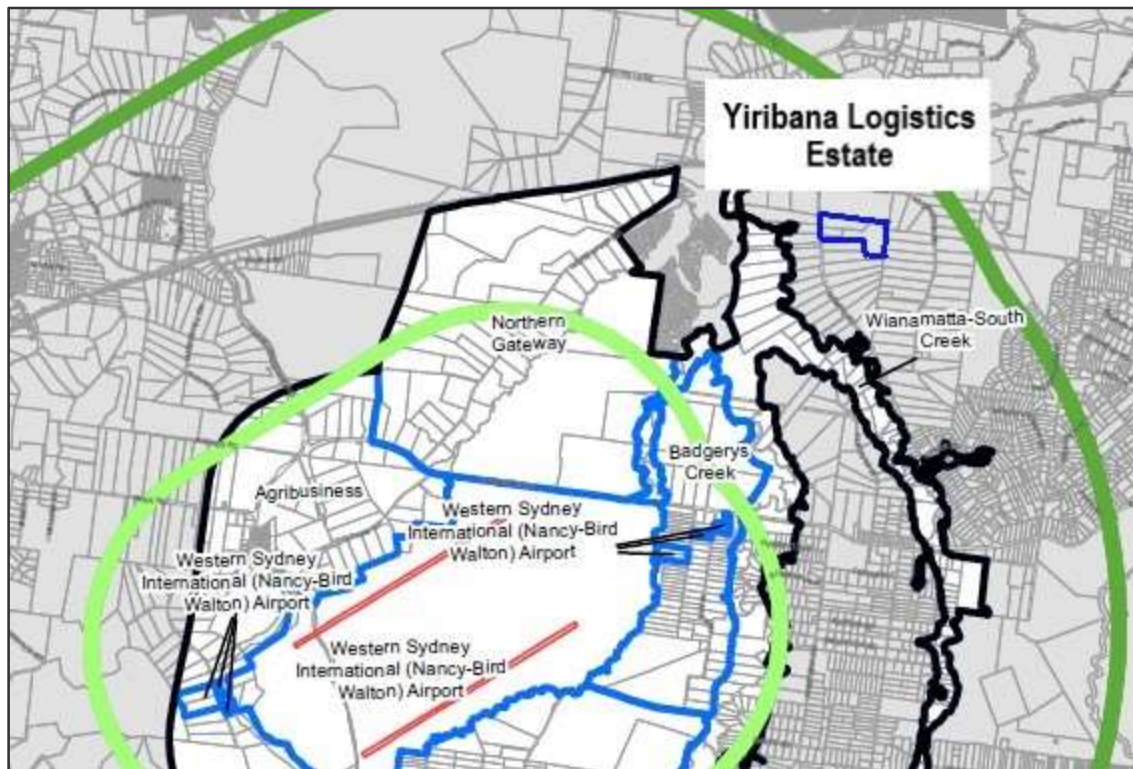


Figure 16: Wildlife Buffer Zones (Source: State Environmental Planning Policy (Western Sydney Aerotropolis) 2020)

11.4 Wind Turbines

The objective of this clause is to regulate the construction of wind turbines and wind monitoring towers on land within 30 kilometres of the Airport.

Development consent must not be granted to development for the purposes of a large wind monitoring tower in the 3–30 km zone unless the consent authority has consulted the relevant Commonwealth body.

The Yiribana Logistics Estate is located in the 3-30 kilometre zone.

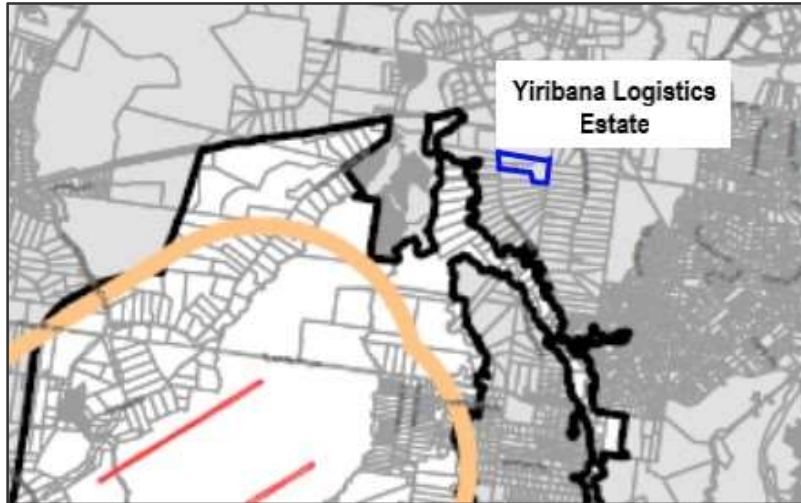


Figure 17: Wind Turbine Buffer Zone Map Inset (Source: State Environmental Planning Policy (Western Sydney Aerotropolis 2020))

11.5 Airspace Operations

The objectives of this clause are:

- to provide for the effective and ongoing operation of the Airport by ensuring that its operation is not compromised by development that penetrates the prescribed airspace for the Airport, and
- to protect the community from undue risk from the operation of the Airport.

The content of this Aeronautical Impact Assessment clearly shows that the Yiribana Logistics Estate does not penetrate the prescribed airspace for Western Sydney Airport, or any other airport.

11.6 Public Safety

The objective of this clause is to regulate development on land on which there is an appreciable risk to public safety from the operation of the Airport.

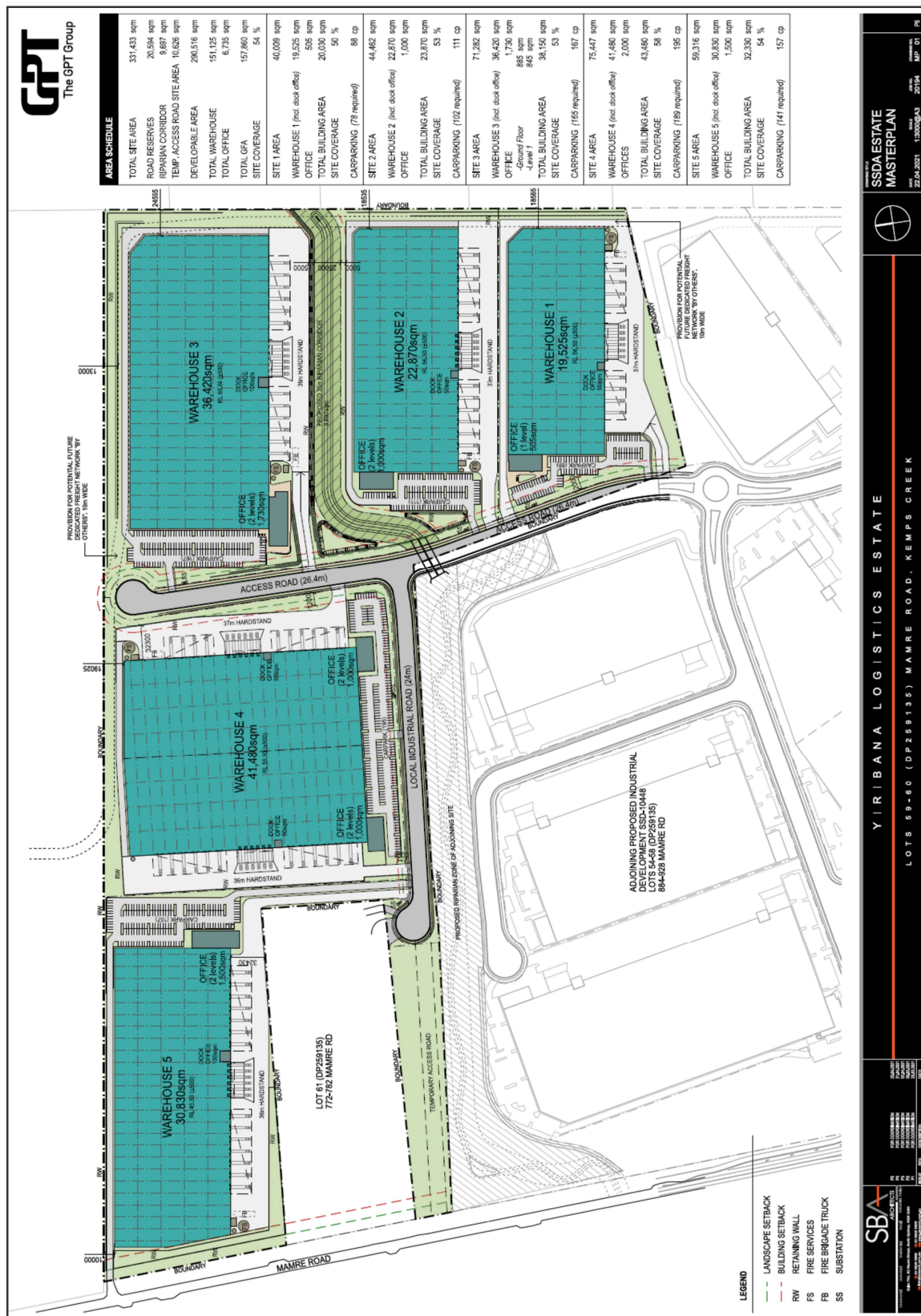
Section 9 of this report describes applicable Public Safety Areas and shows that the Yiribana Logistics Estate is located outside of the Public Safety.

12 Conclusion

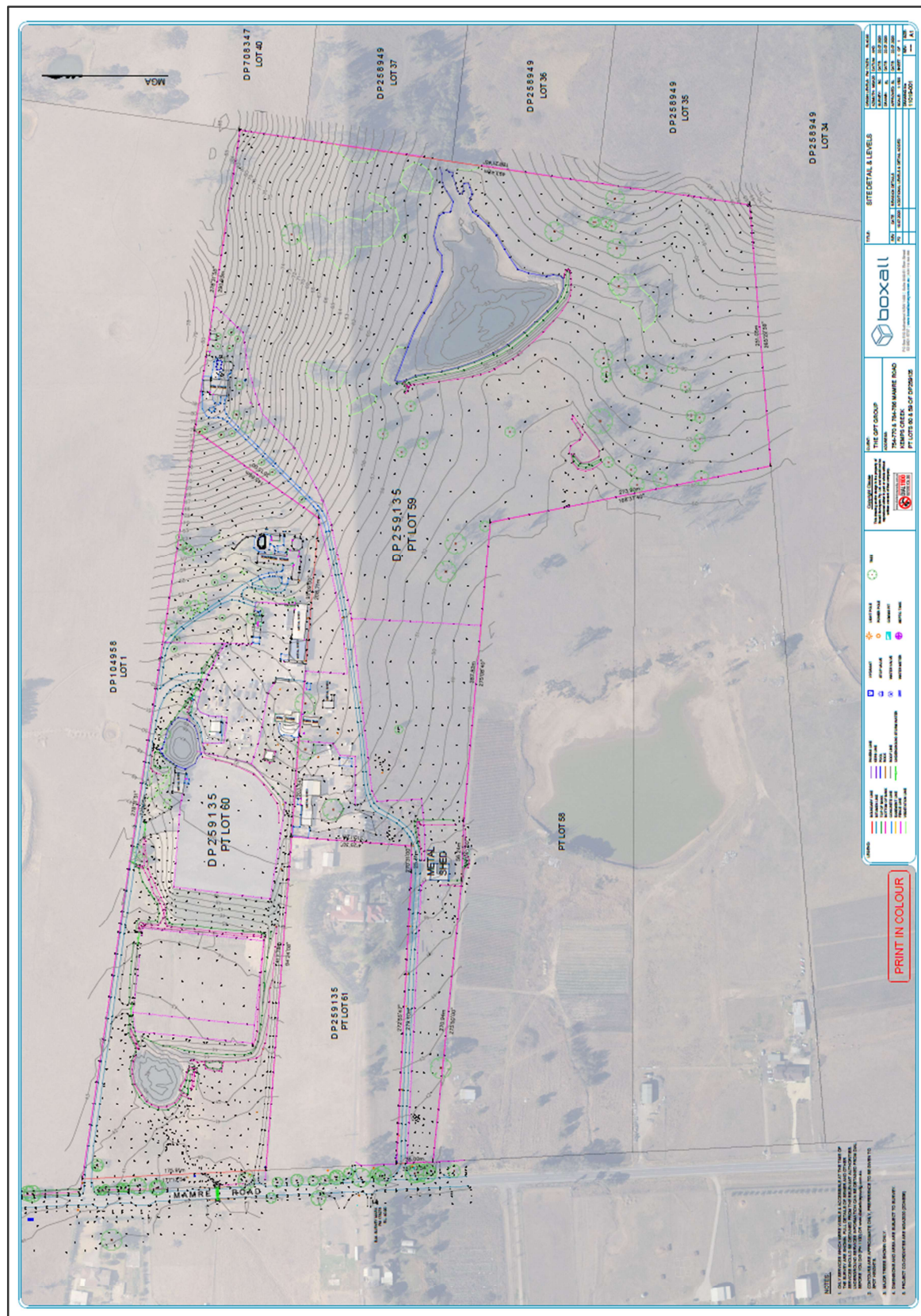
The Yiribana Logistics Estate proposal, with proposed buildings to a maximum height of approximately 87 m AHD and temporary construction crane activity to approximately 110 m AHD:

- Will not infringe the Prescribed Airspace of Western Sydney Airport comprising:
 - the lowest OLS surface of approximately 198m AHD;
 - the Basic ILS PANS OPS surfaces of approximately 223 m AHD nor the SID PANS OPS surface of approximately 212 m AHD;
- will not inhibit the development of other instrument approach procedures;
- will not infringe any BRA for navigation aids;
- will not adversely impact upon ATC Surveillance systems;
- will not adversely impact the safe operation of Western Sydney Airport;
- is located outside of the:
 - lighting zones surrounding the airport and unlikely to cause any hazard from sunlight reflections;
 - the adopted Public Safety Area template;
 - building wind shear assessment area;
- is unlikely to increase the potential for wildlife collisions with aircraft;
- is located within acceptable ANEF contours; and
- is unlikely to impact on any future aviation developments in the area.

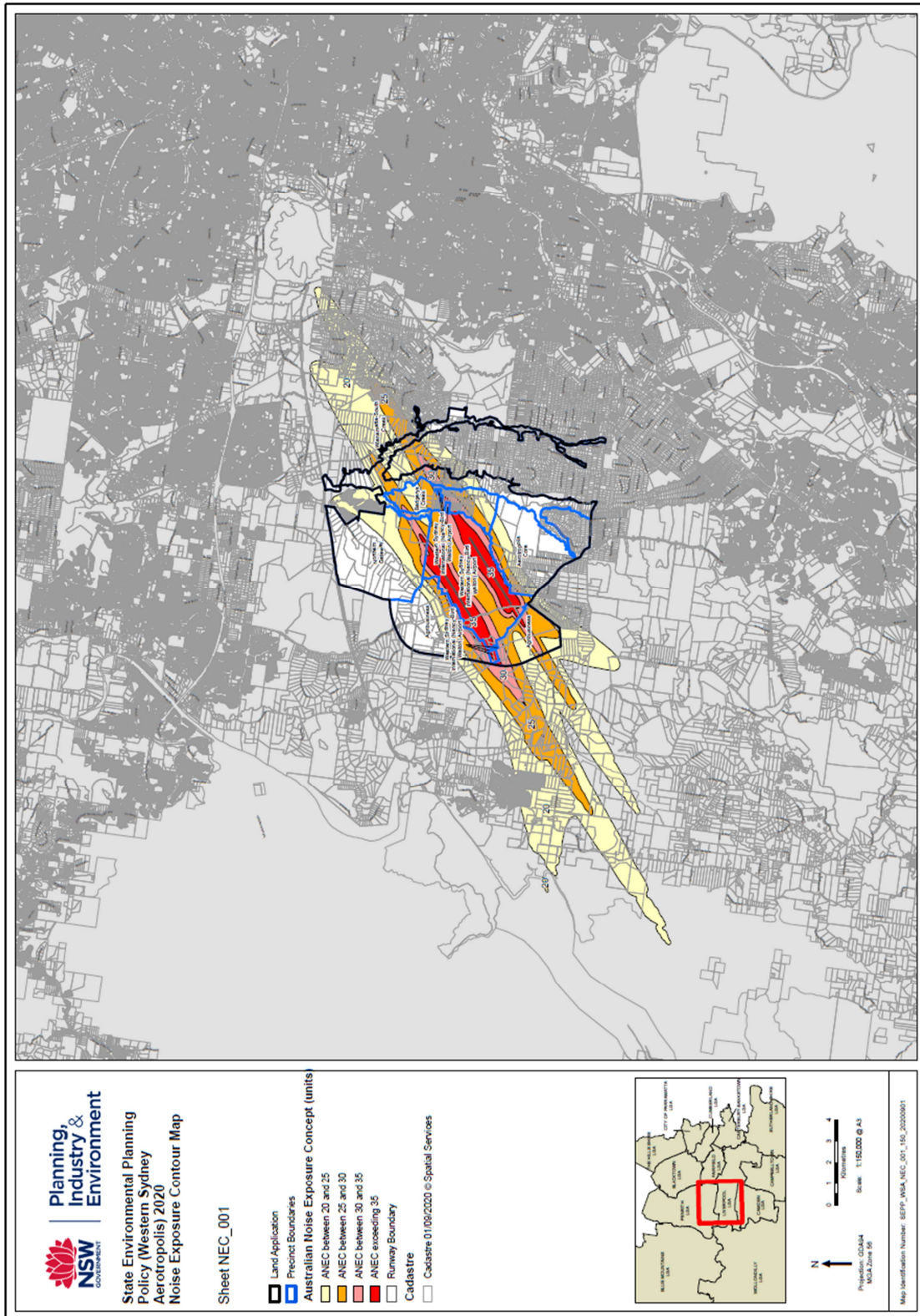
Appendix A –Site Layout Diagram



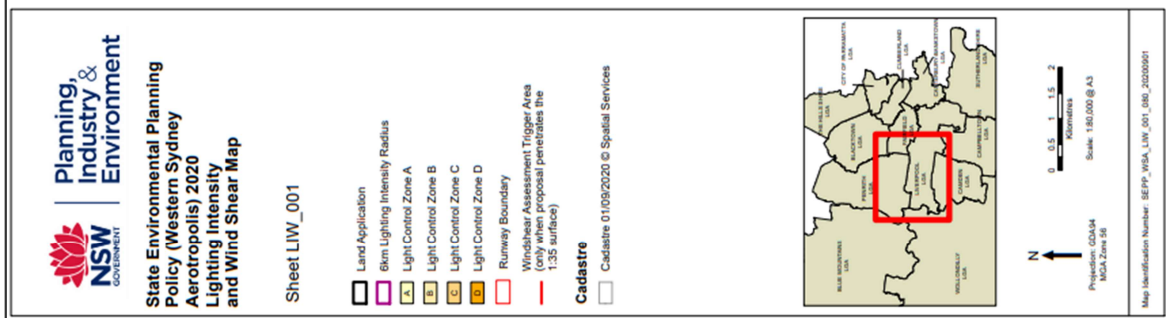
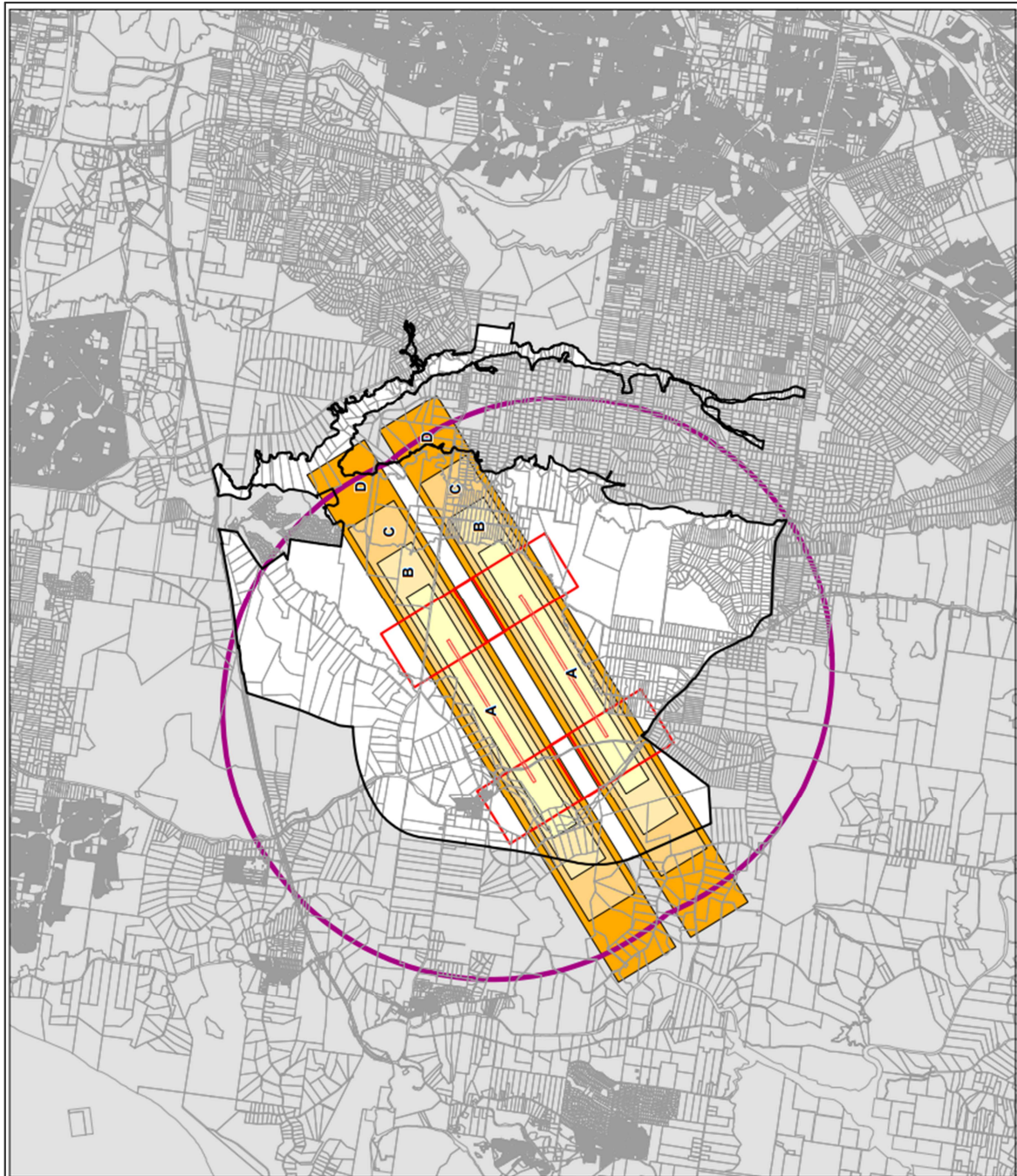
MP01-P5 SSDA Estate Masterplan (GPT Group/SB Architects)



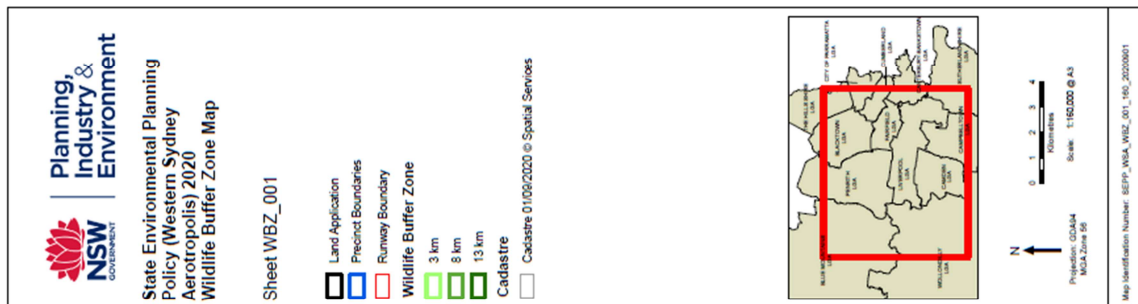
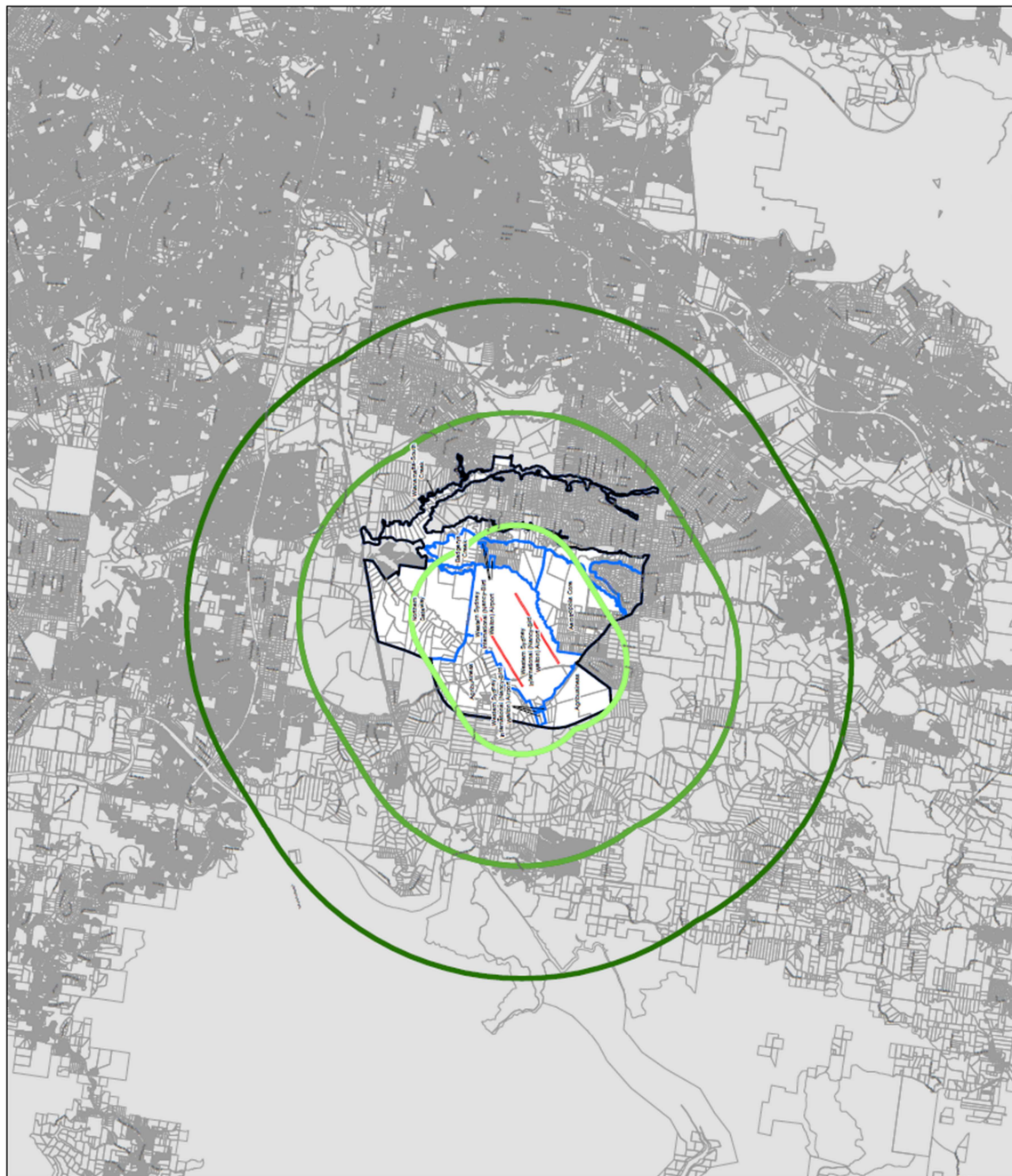
Appendix B – State Environmental Planning Policy Maps



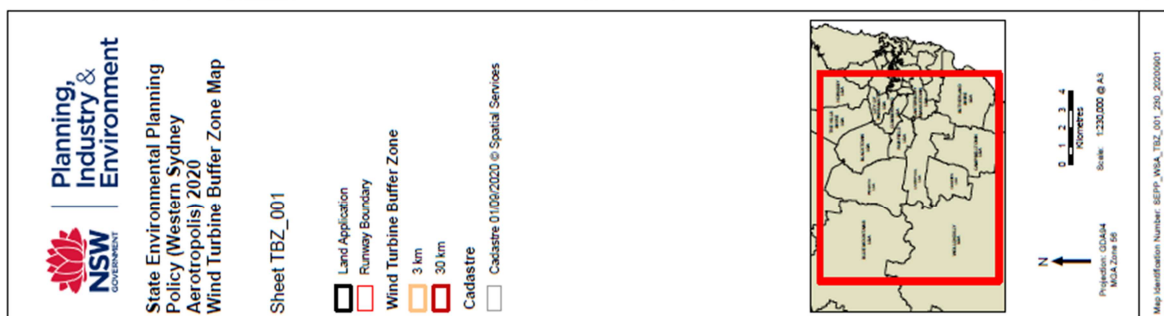
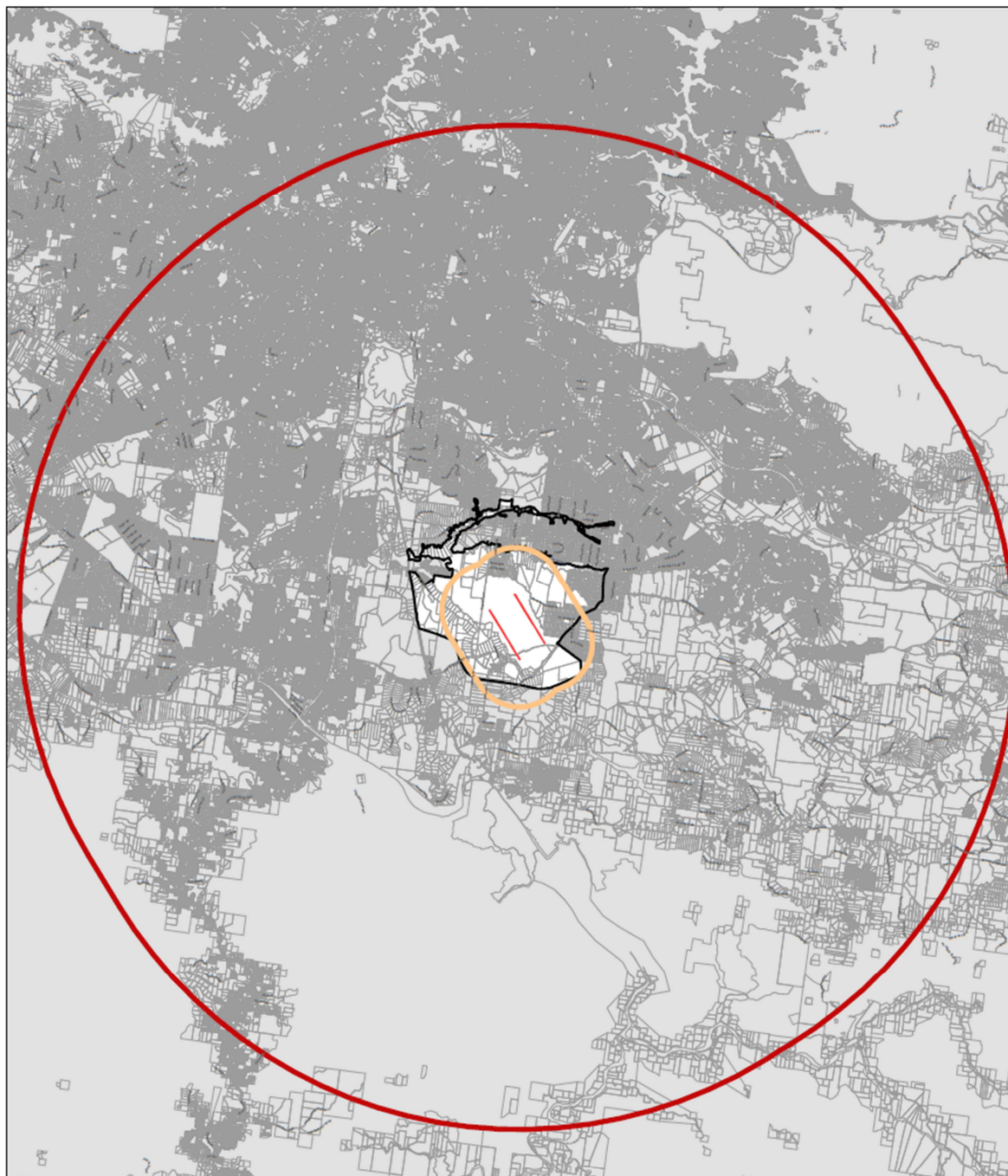
Noise Exposure Map (NSW DPIE WSA SEPP 2020)



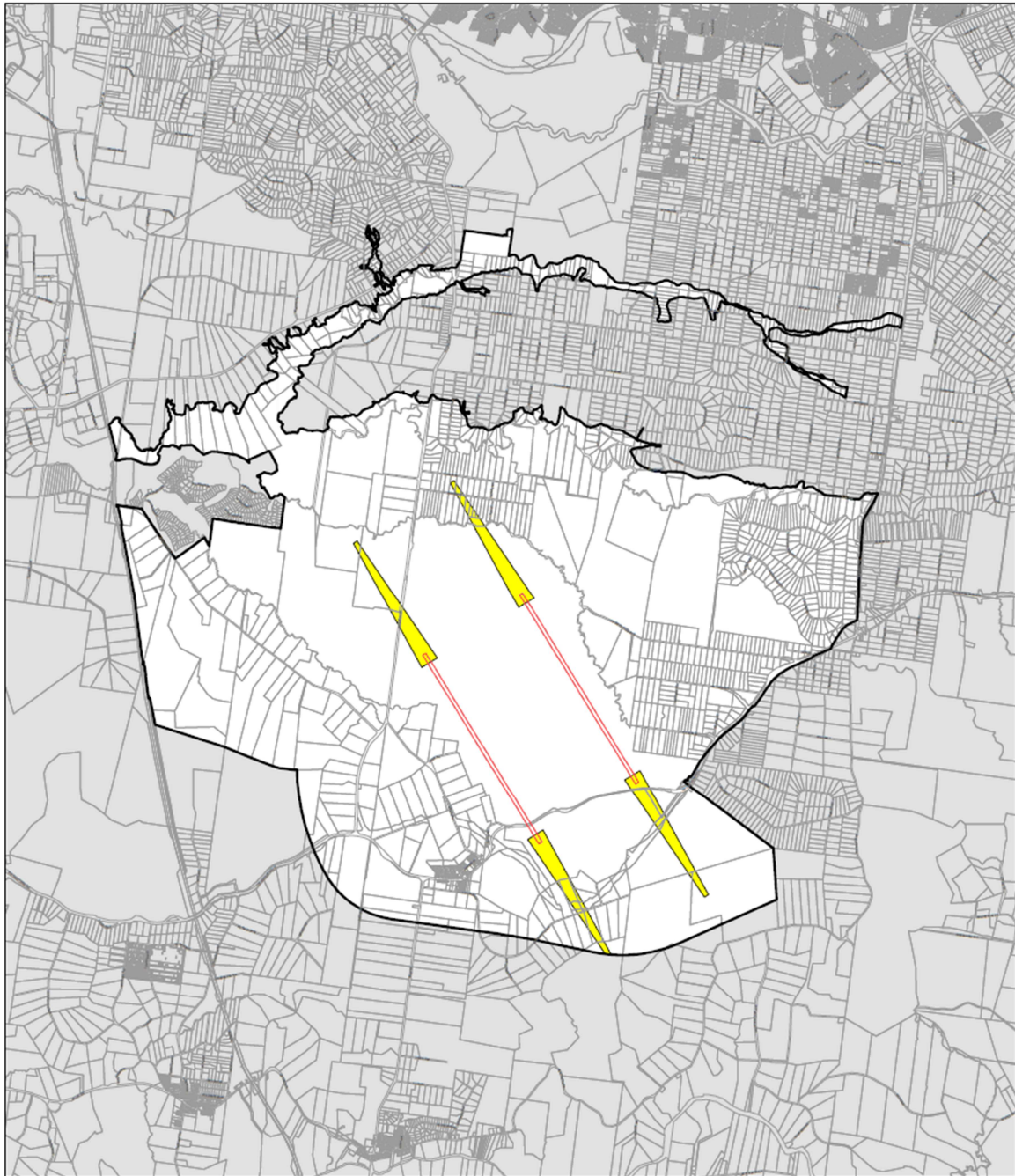
Lighting Intensity and Wind Shear Map (NSW DPIE WSA SEPP 2020)



Wildlife Buffer Zone Map (NSW DPIE WAS SEPP 2020)



Wind Turbine Buffer Zone Map (NSW DPIE WAS SEPP 2020)



Public Safety Area Map (NSW DPIE WSA SEPP 2020)

Appendix C – Assessment Methodology

In preparing aeronautical impact assessments associated with airport safeguarding and protection, it is necessary to observe the requirements of the relevant aviation authorities including:

- The Department of Infrastructure, Regional Development and Cities (DIRDC);
- The Civil Aviation Safety Authority of Australia (CASA);
- Airservices Australia (ASA);
- Airport Operators; and
- Department of Defence where appropriate.

Relevant Acts and Regulations applicable to developments near airports and air traffic routes were referenced during this assessment.

The major relevant documents include:

- Civil Aviation Safety Regulation (CASR) Part 139 Manual of Standards – Aerodromes;
- Aeronautical Information Publication (AIP);
- Airservices Australia's Airways Engineering Instruction – Navigation Aid Building Restricted Areas and Siting Guidance (BRA);
- International Civil Aviation Organisation (ICAO) DOC 8168 Procedures for Air Navigation – Aircraft Operations (PANS OPS);
- The Planning Secretary's Environmental Assessment Requirements (SEARS);
- Western Sydney Airport – Airport Plan 2016;
- Western Sydney Aerotropolis State Environmental Planning Policy 2020;
- Airservices Australia – Western Sydney Airport Preliminary Airspace Management Analysis – 10 April 2015.

A Glossary of Aeronautical Terms and Abbreviations is shown at Appendix D.

Appendix D – Glossary of Aeronautical Terms and Abbreviations

To facilitate the understanding of aviation terminology used in this report, the following is a glossary of terms and acronyms that are commonly used in aeronautical impact assessments and similar aeronautical studies.

AC (Advisory Circulars) are issued by CASA and are intended to provide recommendations and guidance to illustrate a means, but not necessarily the only means, of complying with the *Regulations*.

Aeronautical study is a tool used to review aerodrome and airspace processes and procedures to ensure that safety criteria are appropriate.

AIPs (Aeronautical Information Publications) are publications promulgated to provide operators with aeronautical information of a lasting character essential to air navigation. They contain details of regulations, procedures and other information pertinent to flying and operation of aircraft. In Australia, AIP is issued by Airservices Australia on behalf of CASA.

Air routes exist between navigation aid equipped aerodromes or waypoints to facilitate the regular and safe flow of aircraft operating under IFR.

Airservices Australia is the Australian government-owned corporation providing safe and environmentally sound air traffic management and related airside services to the aviation industry.

Altitude is the vertical distance of a level, a point or an object, considered as a point, measured from mean sea level.

ATC (Air Traffic Control) service is a service provided for the purpose of:

- a. preventing collisions:
 1. between aircraft; and
 2. on the manoeuvring area between aircraft and obstructions; and
- b. expediting and maintaining an orderly flow of air traffic.

CASA (Civil Aviation Safety Authority) is the Australian government authority responsible under the *Civil Aviation Act 1988* for developing and promulgating appropriate, clear and concise aviation safety standards. As Australia is a signatory to the ICAO *Chicago Convention*, CASA adopts the standards and recommended practices established by ICAO, except where a difference has been notified.

CASR (Civil Aviation Safety Regulations) are promulgated by CASA and establish the regulatory framework (*Regulations*) within which all service providers must operate.

Civil Aviation Act 1988 (the Act) establishes the CASA with functions relating to civil aviation, in particular the safety of civil aviation and for related purposes.

ICAO (International Civil Aviation Organization) is an agency of the United Nations which codifies the principles and techniques of international air navigation and fosters the planning and development of international air transport to ensure safe and orderly growth. The ICAO Council adopts standards and recommended practices concerning air navigation, its infrastructure, flight inspection, prevention of unlawful interference, and facilitation of border-crossing procedures for international civil aviation. In addition, the ICAO defines the protocols for air accident investigation followed by transport safety authorities in countries signatory to the Convention on International Civil Aviation, commonly known as the *Chicago Convention*. Australia is a signatory to the *Chicago Convention*.

IFR (Instrument Flight Rules) are rules applicable to the conduct of flight under IMC. IFR are established to govern flight under conditions in which flight by outside visual reference is not safe. IFR flight depends upon flying by reference to instruments in the flight deck, and navigation is accomplished by reference to electronic signals. It is also referred to as, “a term used by pilots and controllers to indicate the type of flight plan an aircraft is flying,” such as an IFR or VFR flight plan. Pilots must hold IFR qualifications and aircraft must be suitably equipped with appropriate instruments and navigation aids to enable flight in IMC.

IMC (Instrument Meteorological Conditions) are meteorological conditions expressed in terms of visibility, distance from cloud and ceiling, less than the minimum specified for visual meteorological conditions.

LSALT (Lowest Safe Altitudes) are published for each low level air route segment. Their purpose is to allow pilots of aircraft that suffer a system failure to descend to the LSALT to ensure terrain or obstacle clearance in IMC where the pilot cannot see the terrain or obstacles due to cloud or poor visibility conditions. It is an



altitude that is at least 1,000 feet above any obstacle or terrain within a defined safety buffer region around a particular route that a pilot might fly.

MDA (Minimum Descent Altitude) is the lowest altitude that can be used during a non-precision approach in IMC. Flight below the MDA reduces the clearance above obstacles and is not permitted in IMC.

MOS (Manual of Standards) comprises specifications (Standards) prescribed by CASA, of uniform application, determined to be necessary for the safety of air navigation.

NOTAMs (Notices to Airmen) are notices issued by the NOTAM office containing information or instruction concerning the establishment, condition or change in any aeronautical facility, service, procedure or hazard, the timely knowledge of which is essential to persons concerned with flight operations.

Obstacles. All fixed (whether temporary or permanent) and mobile objects, or parts thereof, that are located on an area intended for the surface movement of aircraft or that extend above a defined surface intended to protect aircraft in flight.

OLS (Obstacle Limitation Surfaces) are a series of planes associated with each runway at an aerodrome that defines the desirable limits to which objects may project into the airspace around the aerodrome so that aircraft operations may be conducted safely.

PANS OPS (Procedures for Air Navigation Services – Aircraft Operations) is an Air Traffic Control term denominating rules for designing instrument approach and departure procedures. Such procedures are used to allow aircraft to land and take off under Instrument Meteorological Conditions (IMC) or Instrument Flight Rules (IFR). ICAO document 8168-OPS/611 (volumes 1 and 2) outlines the principles for airspace protection and procedure design which all ICAO signatory states must adhere to. The regulatory material surrounding PANS OPS may vary from country to country.

PANS OPS Surfaces. Similar to an Obstacle Limitation Surface, the PANS OPS protection surfaces are imaginary surfaces in space which guarantee the aircraft a certain minimum obstacle clearance. These surfaces may be used as a tool for local governments in assessing building development. Where buildings may (under certain circumstances) be permitted to infringe the OLS, they cannot be permitted to infringe any PANS OPS surface, because the purpose of these surfaces is to guarantee pilots operating under IMC an obstacle free descent path for a given approach.

Prescribed airspace is an airspace specified in, or ascertained in accordance with, the Regulations, where it is in the interests of the safety, efficiency or regularity of existing or future air transport operations into or out of an airport for the airspace to be protected. The prescribed airspace for an airport is the airspace above any part of either an OLS or a PANS OPS surface for the airport and airspace declared in a declaration relating to the airport.

Radar Terrain Clearance Chart (RTCC) is a chart that provides air traffic controllers with the lowest usable altitude that they can vector an aircraft using prescribed surveillance procedures within controlled airspace. There is a protection surface below this usable altitude which is shown in airport master plans.

Regulations (Civil Aviation Safety Regulations)

VFR (Visual Flight Rules) are rules applicable to the conduct of flight under VMC. VFR allow a pilot to operate an aircraft in weather conditions generally clear enough to allow the pilot to maintain visual contact with the terrain and to see where the aircraft is going. Specifically, the weather must be better than basic VFR weather minima. If the weather is worse than VFR minima, pilots are required to use instrument flight rules. Pilots must be specifically qualified and aircraft specifically equipped to enable flight in IMC,

VMC (Visual Meteorological Conditions) are meteorological conditions expressed in terms of visibility, distance from cloud and ceiling, equal or better than specified minima.

Abbreviations

Abbreviations used in this report, and the meanings assigned to them for the purposes of this report are detailed in the following table.

Abbreviation	Meaning
AC	Advisory Circular (documents that support CAR 1998)
ACFT	Aircraft
AD	Aerodrome
ADS-B	Automatic Dependent Surveillance – Broadcast
AHD	Australian Height Datum
AIP	Aeronautical Information Publication
Airports Act	Airports Act 1996, as amended
AIS	Aeronautical Information Service
ALT	Altitude
AMSL	Above Mean Sea Level
APARs	Airports (Protection of Airspace) Regulations, 1996 as amended
ARP	Aerodrome Reference Point
AsA	Airservices Australia
ATC	Air Traffic Control(ler)
ATM	Air Traffic Management
BARO-VNAV	Barometric Vertical Navigation
BRA	Building Restricted Area
CAO	Civil Aviation Order
CAR	Civil Aviation Regulation
CASA	Civil Aviation Safety Authority
CASR	Civil Aviation Safety Regulation
Cat	Category
DAP	Departure and Approach Procedures (charts published by AsA)
DER	Departure End of (the) Runway
DME	Distance Measuring Equipment
Doc nn	ICAO Document Number nn
DITRDC	Department of Infrastructure, Transport, Regional Development and Cities
ELEV	Elevation (above mean sea level)
ENE	East North East
ERSA	Enroute Supplement Australia
FAF	Final Approach Fix
FAP	Final Approach Point
FAS	Final Approach Surface of a BARO-VNAV approach

Abbreviation	Meaning
ft	feet
GBAS	Ground Based Augmentation System (satellite precision landing system)
GNSS	Global Navigation Satellite System
GP	Glide Path
HLS	Helicopter Landing Site
IAS	Indicated Airspeed
ICAO	International Civil Aviation Organisation
IHS	Inner Horizontal Surface, an Obstacle Limitation Surface
ILS	Instrument Landing System
ISA	International Standard Atmosphere
km	kilometres
kt	Knot (one nautical mile per hour)
LAT	Latitude
LOC	Localizer
LONG	Longitude
LNAV	Lateral Navigation criteria
m	metres
MAPt	Missed Approach Point
MDA	Minimum Descent Altitude
MGA94	Map Grid Australia 1994
MOC	Minimum Obstacle Clearance
MOS	Manual of Standards, published by CASA
MSA	Minimum Sector Altitude
MVA	Minimum Vector Altitude
NASAG	National Airports Safeguarding Advisory Group
NDB	Non Directional Beacon
NE	North East
NM	Nautical Mile (= 1.852 km)
nnDME	Distance from the DME (in nautical miles)
NNE	North North East
NOTAM	NOtice to AirMen
OAS	Obstacle Assessment Surface
OCA	Obstacle Clearance Altitude
OCH	Obstacle Clearance Height
OHS	Outer Horizontal Surface
OIS	Obstacle Identification Surface
OLS	Obstacle Limitation Surface

Abbreviation	Meaning
PANS OPS	Procedures for Air Navigation Services – Aircraft Operations, ICAO Doc 8168
PBN	Performance Based Navigation
PRM	Precision Runway Monitor
QNH	An altimeter setting relative to height above mean sea level
REF	Reference
RL	Relative Level
RNAV	aRea NAVigation
RNP	Required Navigation Performance
RPA	Rules and Practices for Aerodromes — replaced by the MOS Part 139 — Aerodromes
RPT	Regular Public Transport
RTCC	Radar Terrain Clearance Chart
RWY	Runway
SFC	Surface
SID	Standard Instrument Departure
SOC	Start Of Climb
STAR	STandard ARrival
SGHAT	Solar Glare Hazard Analysis Tool
TAR	Terminal Approach Radar
TAS	True Air Speed
THR	Threshold (Runway)
TNA	Turn Altitude
TODA	Take-Off Distance Available
VNAV	Vertical Navigation criteria
V _n	aircraft critical Velocity reference
VOR	Very high frequency Omni directional Range
WAC	World Aeronautical Chart