

International Chinese School, Anglo Australian Christian and Charitable Trust  
211 Pacific Highway, St Leonards, NSW

Architectural Drawings

SSD 00	Cover Sheet
SSD 01	Site Plan & Site Analysis Plan
SSD 02	Basement Floor Plan
SSD 03	Ground Floor Plan
SSD 04	First Floor Plan
SSD 05	Furniture Layout - Ground Floor
SSD 06	Furniture Layout - First Floor
SSD 07	Elevations - Sheet 01
SSD 08	Elevations - Sheet 02
SSD 09	Sections & Signage Details

Architecture  
Project management  
Interior design



stanton dahl  
architects



International Chinese  
School

Anglo Australian Christian and  
Charitable Trust  
211 Pacific Highway,  
St Leonards, NSW

Drawn: cjh  
Checked: cjh  
Plot date: 26/6/19

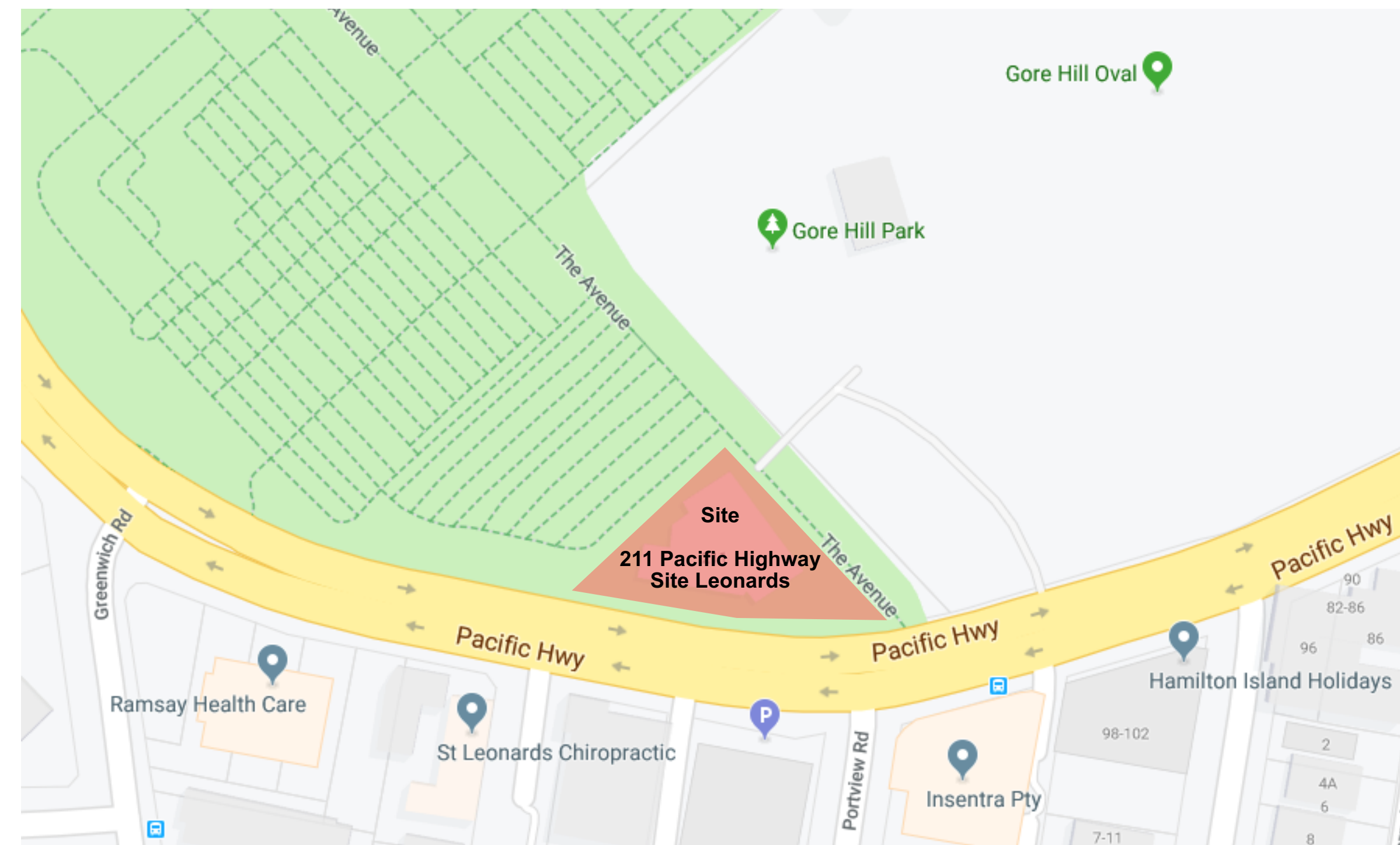
Scale: 1:1 as noted @ A1

Project No:  
2417.19

Drawing No:  
SSD00

Revision#:  
03

Cover Sheet

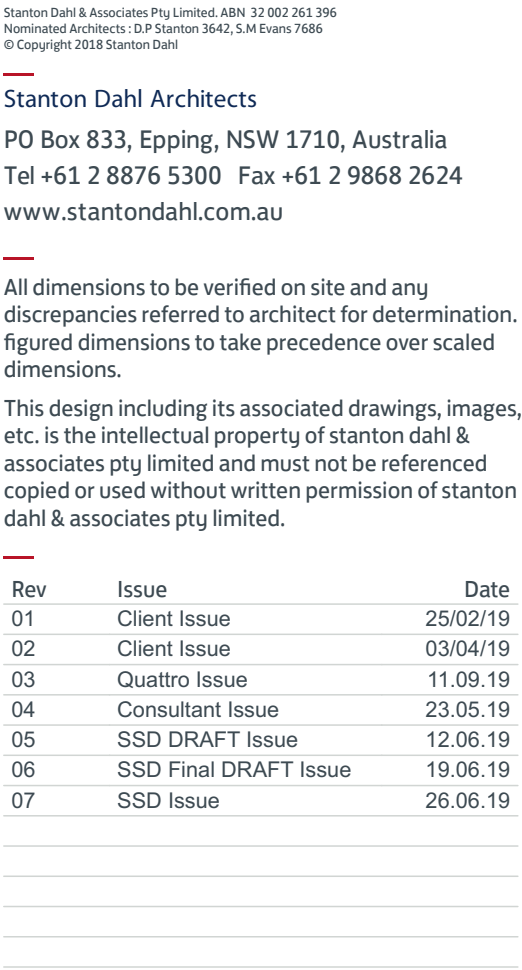


01 Location Plan - Map



02 Location Plan - Aerial Image









Stanton Dahl & Associates Pty Limited ABN 12 002 761 7016  
Registered Architects - Q.P. Stanton 3643, S.M. Evans 7486  
© Copyright 2018 Stanton Dahl

Stanton Dahl Architects  
PO Box 833, Epping, NSW 1710, Australia  
Tel +61 2 8876 5300 Fax +61 2 9868 2624  
www.stantondahl.com.au

All dimensions to be verified on site and any discrepancies referred to architect for determination. figured dimensions to take precedence over scaled dimensions.

This design including its associated drawings, images, etc. is the intellectual property of stanton dahl & associates pty limited and must not be referenced copied or used without written permission of stanton dahl & associates pty limited.

Rev	Issue	Date
01	Client Issue	25/02/19
02	Quattro Issue	11.09.19
03	SSD DRAFT Issue	12.06.19
04	SSD Final DRAFT Issue	19.06.19
05	SSD Issue	26.06.19

Architecture  
Project management  
Interior design

**stanton dahl**  
architects

**International Chinese School**

211 Pacific Highway,  
St Leonards, NSW

Drawn: cjh  
Checked: cjh  
Plot date: 26/6/19

Scale: 1:100 as noted @ A1

Project No;  
**2417.19**

Drawing No;  
**SSD02**

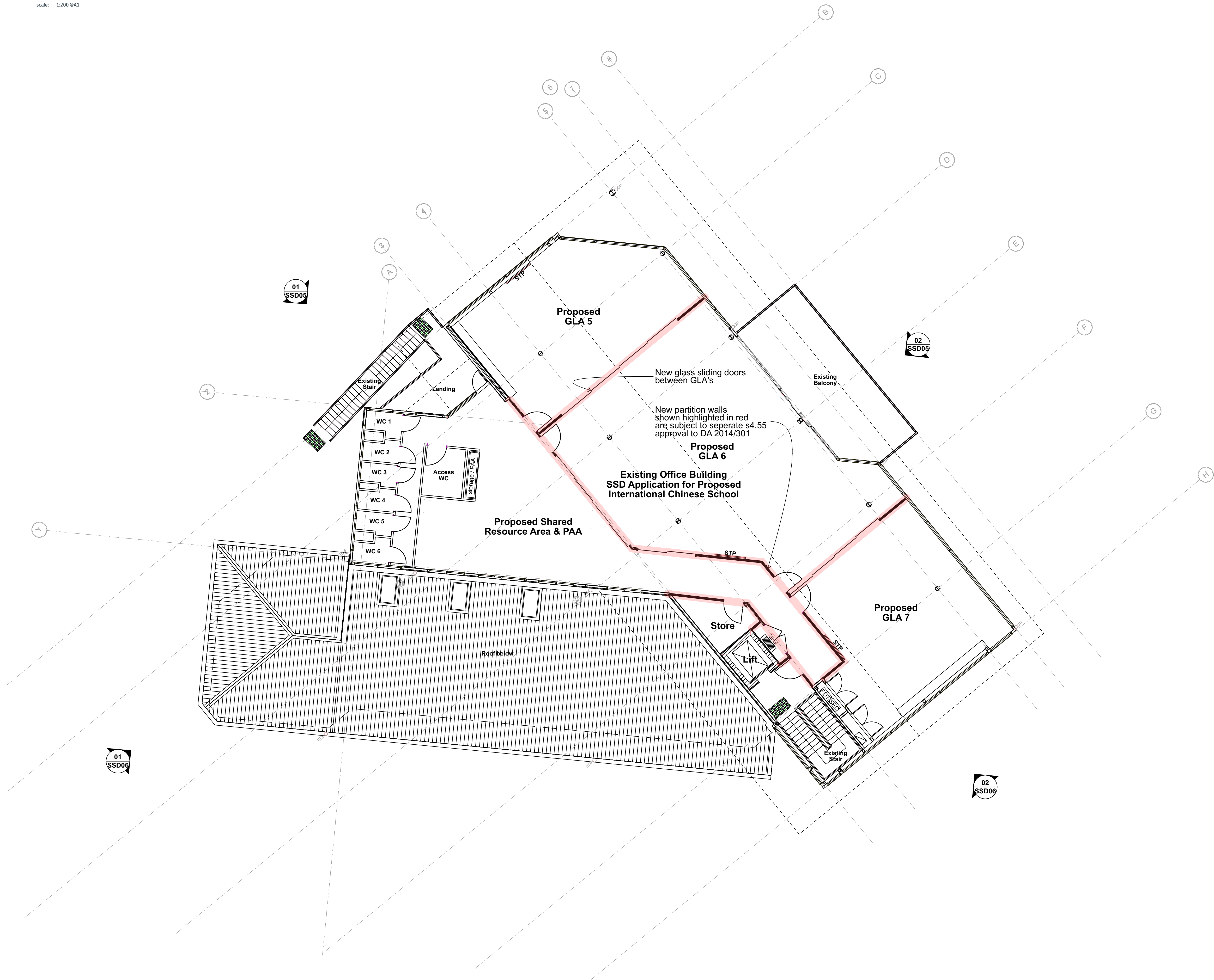
Revision#;  
**05**

Basement Floor Plan







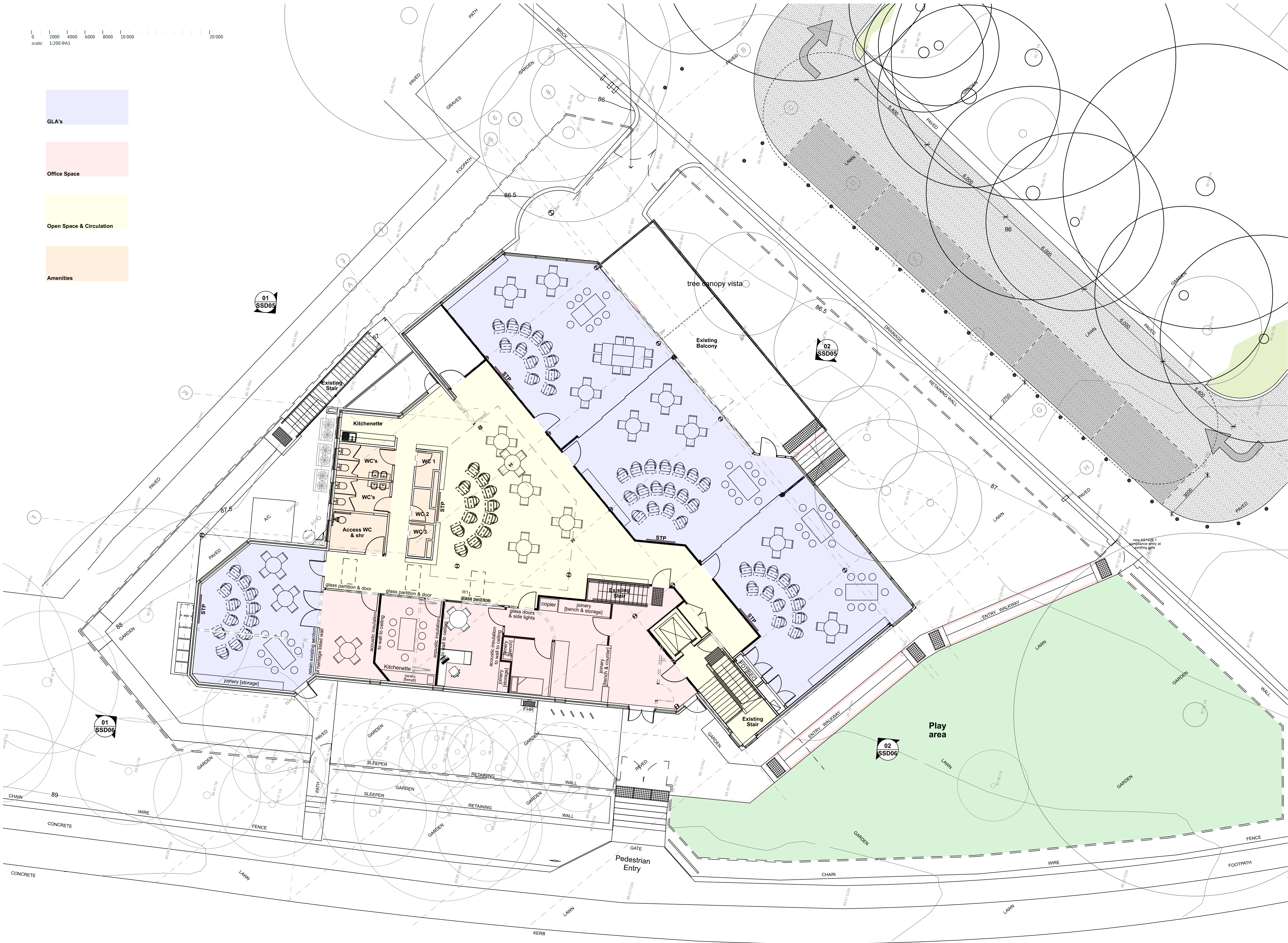


All dimensions to be verified on site and any discrepancies referred to architect for determination. figured dimensions to take precedence over scaled dimensions.

This design including its associated drawings, images, etc. is the intellectual property of stanton dahl & associates pty limited and must not be referenced copied or used without written permission of stanton dahl & associates pty limited.

Rev	Issue	Date
01	Client Issue	25/02/19
02	Quattro Issue	11/09/19
03	SSD DRAFT Issue	12/06/19
04	SSD Final DRAFT Issue	19/06/19
05	SSD Issue	26/06/19





01 Furniture layout - Ground Floor Plan  
1:100

Stanton Dahl & Associates Pty Limited ABN 32 002 762 7016  
Normanville Architects - O.P. Stanton 3643, S.M. Evans 7486  
© Copyright 2018 Stanton Dahl

Stanton Dahl Architects  
PO Box 833, Epping, NSW 1710, Australia  
Tel +61 2 8876 5300 Fax +61 2 9868 2624  
www.stantondahl.com.au

All dimensions to be verified on site and any discrepancies referred to architect for determination. figured dimensions to take precedence over scaled dimensions.

This design including its associated drawings, images, etc. is the intellectual property of stanton dahl & associates pty limited and must not be referenced copied or used without written permission of stanton dahl & associates pty limited.

Rev	Issue	Date
01	SSD DRAFT Issue	12.06.19
02	SSD Final DRAFT Issue	19.06.19
03	SSD Issue	26.06.19

Architecture  
Project management  
Interior design

**stanton dahl**  
architects

**International Chinese School**

211 Pacific Highway,  
St Leonards, NSW

Drawn: cjh  
Checked: cjh  
Plot date: 26/6/19

Scale: 1:100 as noted @ A1

Project No:  
**2417.19**

Drawing No:  
**SSD05**

Revision#:  
**03**

Furniture Layout -  
Ground Floor



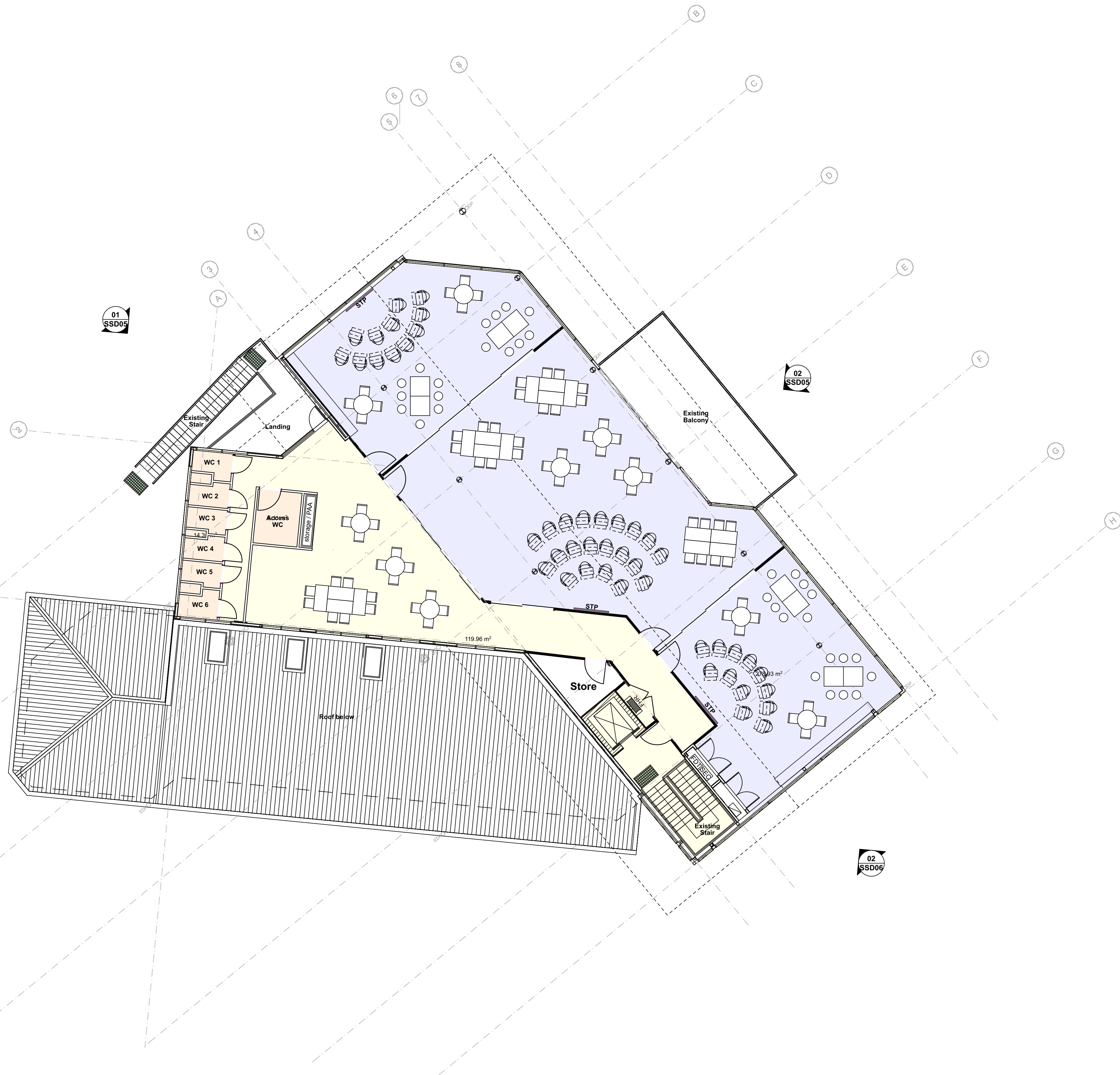
0 2000 4000 6000 8000 10000 20000  
scale: 1:200 @A1

GLA's

Office Space

Open Space & Circulation

Amenities



Stanton Dahl & Associates Pty Limited ABN 32 902 762 7016  
Registered Architects - NSW Stanton 3642, S.M Evans 7686  
© Copyright 2018 Stanton Dahl

Stanton Dahl Architects  
PO Box 833, Epping, NSW 1710, Australia  
Tel +61 2 8876 5300 Fax +61 2 9868 2624  
www.stantondahl.com.au

All dimensions to be verified on site and any discrepancies referred to architect for determination. figured dimensions to take precedence over scaled dimensions.

This design including its associated drawings, images, etc. is the intellectual property of stanton dahl & associates pty limited and must not be referenced copied or used without written permission of stanton dahl & associates pty limited.

Rev	Issue	Date
01	SSD DRAFT Issue	12.06.19
02	SSD Final DRAFT Issue	19.06.19
03	SSD Issue	26.06.19

Architecture  
Project management  
Interior design



**stanton dahl**  
architects



**International Chinese  
School**

211 Pacific Highway,  
St Leonards, NSW

Drawn; cjh  
Checked; cjh  
Plot date; 26/6/19

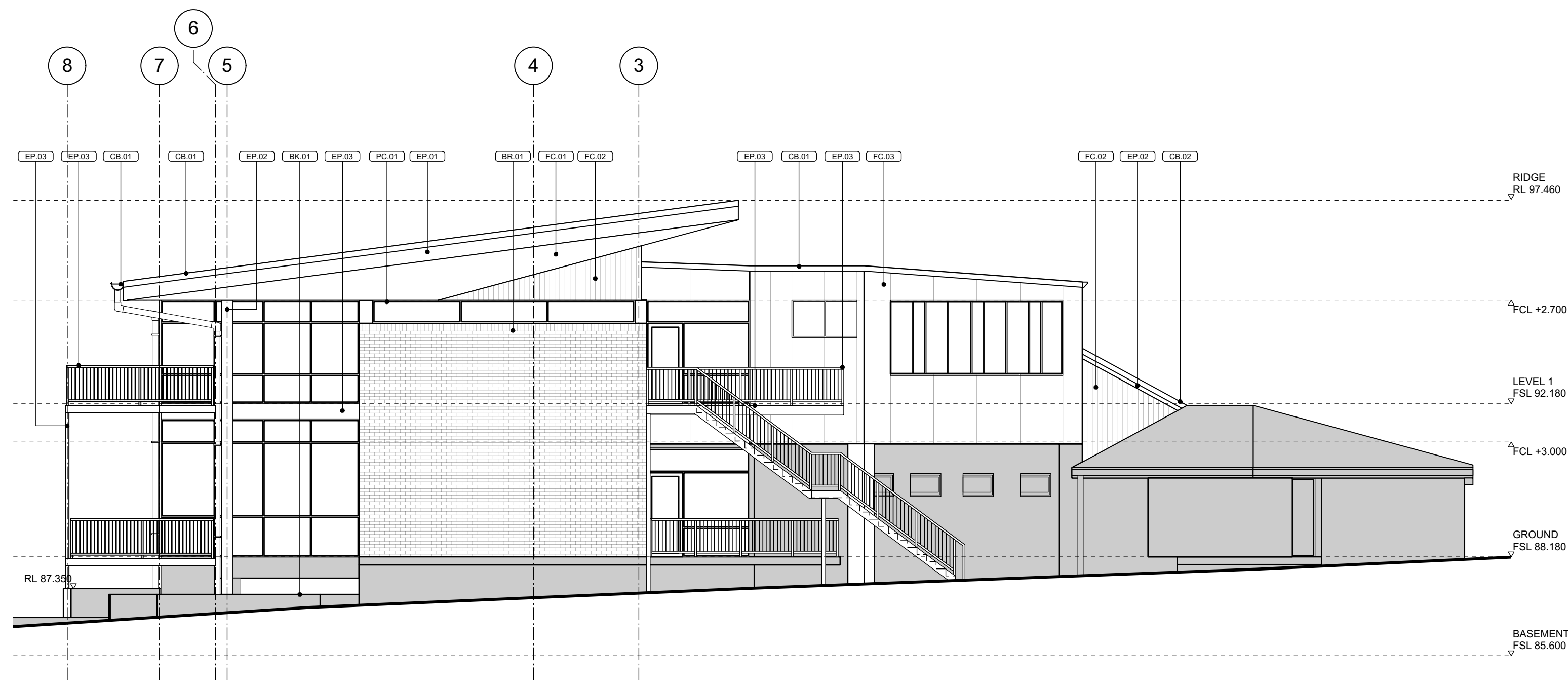
Scale; 1:100 as noted @ A1

Project No;  
**2417.19**

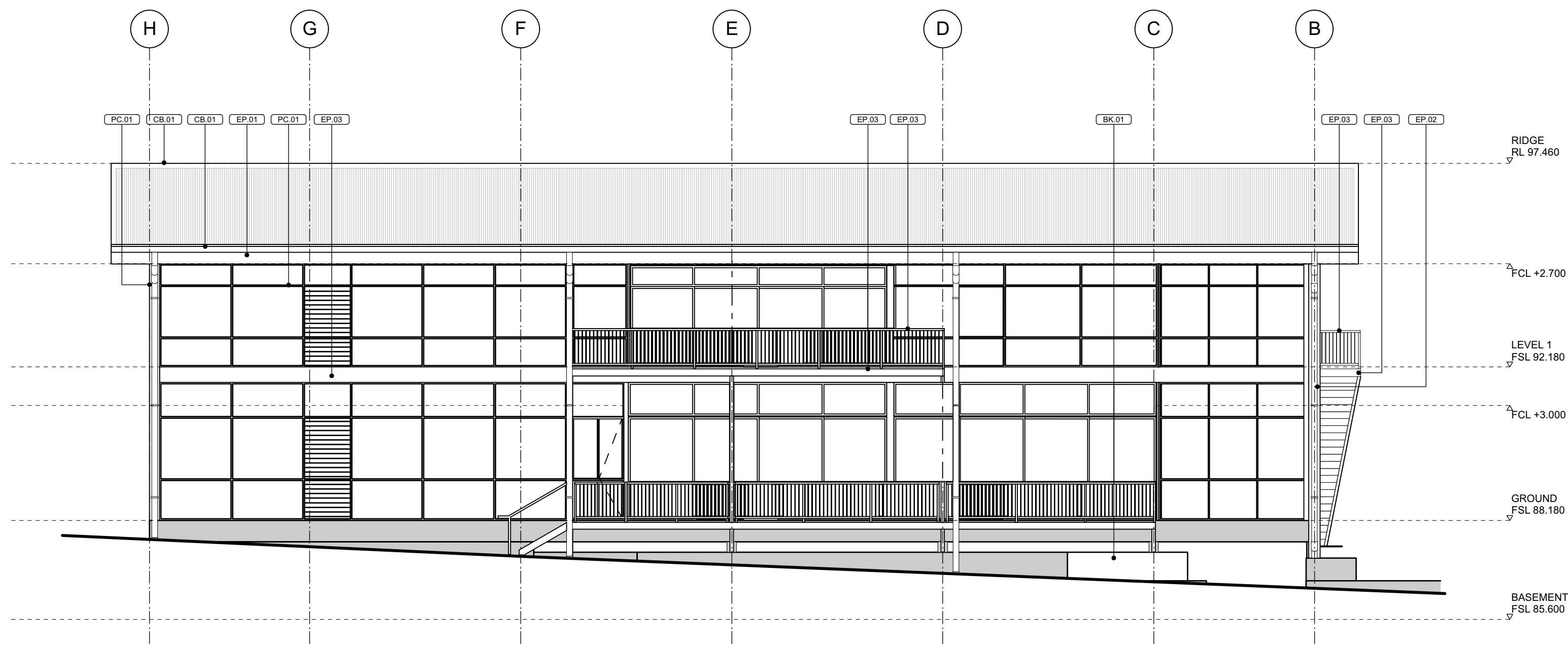
Drawing No; **SSD06** Revision#; **03**

Furniture Layout - First  
Floor

**01 Furniture Layout - First Floor Plan**  
1:100



01 Northern Elevation  
1:100

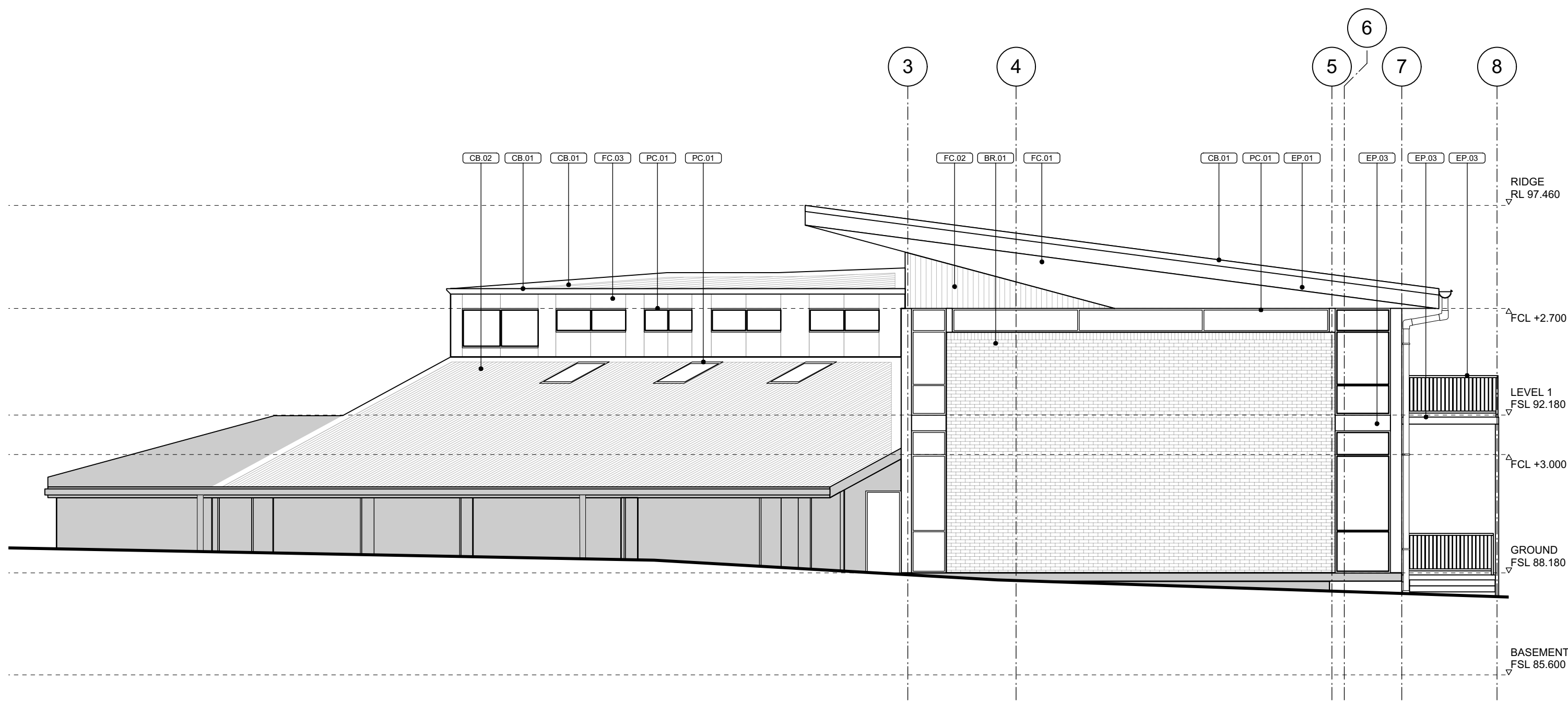


02 Eastern Elevation  
1:100

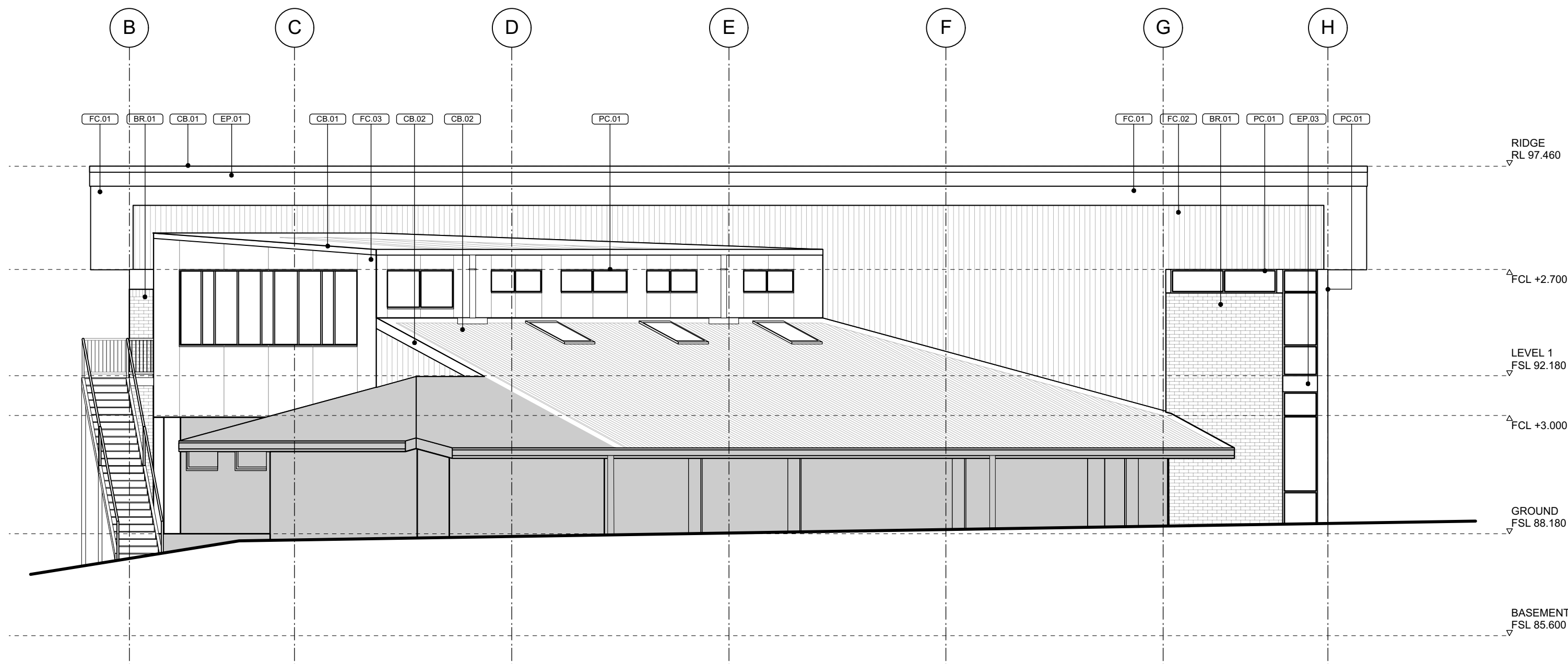
Rev	Issue	Date
01	SSD DRAFT Issue	12.06.19
02	SSD Final DRAFT Issue	19.06.19
03	SSD Issue	26.06.19







01 Southern Elevation  
1:100



02 Western Elevation  
1:100

All dimensions to be verified on site and any discrepancies referred to architect for determination. figured dimensions to take precedence over scaled dimensions.  
This design including its associated drawings, images, etc. is the intellectual property of stanton dahl & associates pty limited and must not be referenced copied or used without written permission of stanton dahl & associates pty limited.

Rev	Issue	Date
01	SSD DRAFT Issue	12.06.19
02	SSD Final DRAFT Issue	19.06.19
03	SSD Issue	26.06.19

Architecture  
Project management  
Interior design

  
**stanton dahl**  
architects

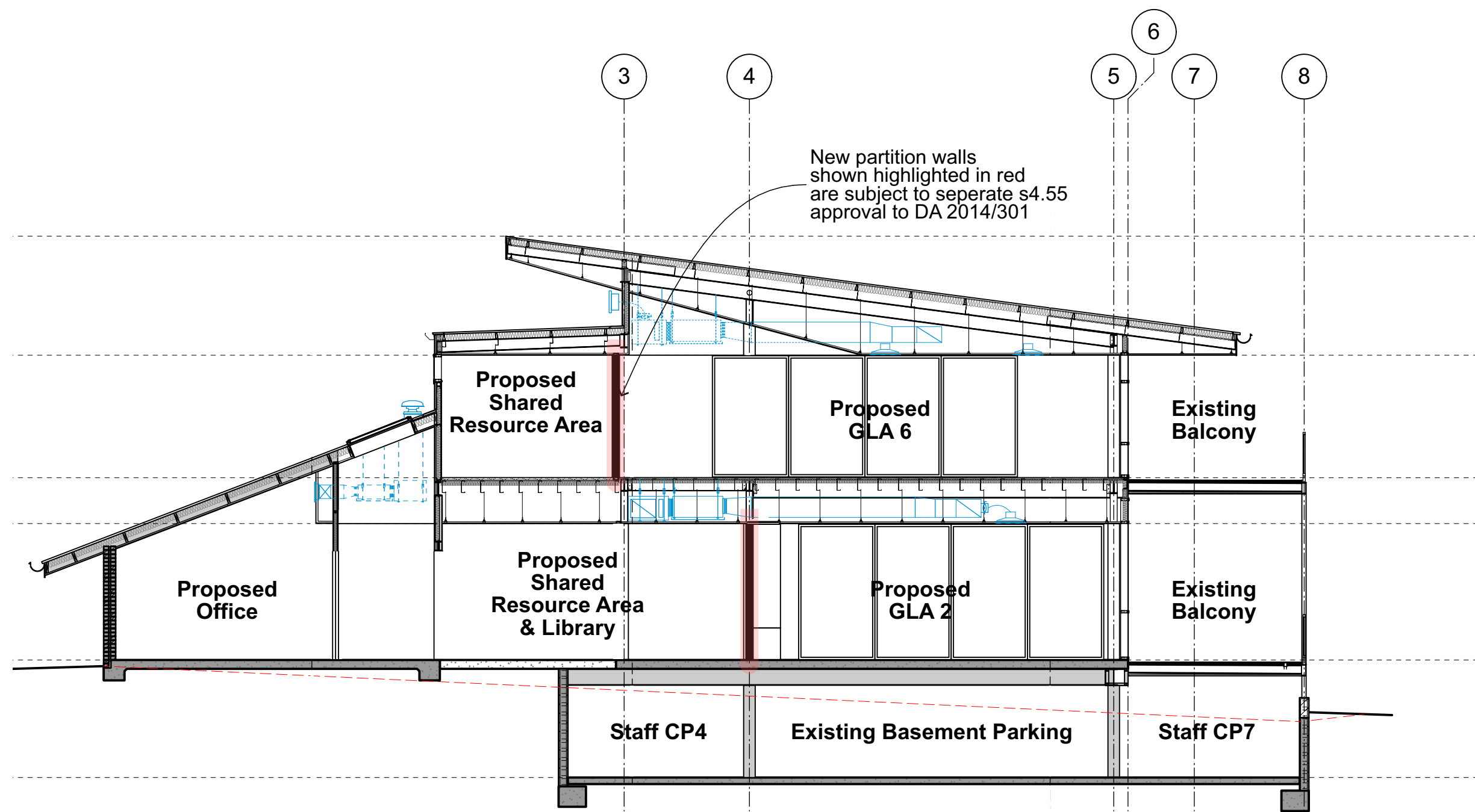
  
**International Chinese School**  
211 Pacific Highway,  
St Leonards, NSW

Drawn; cjh  
Checked; cjh  
Plot date; 26/6/19  
Scale; 1:1 as noted @ A1

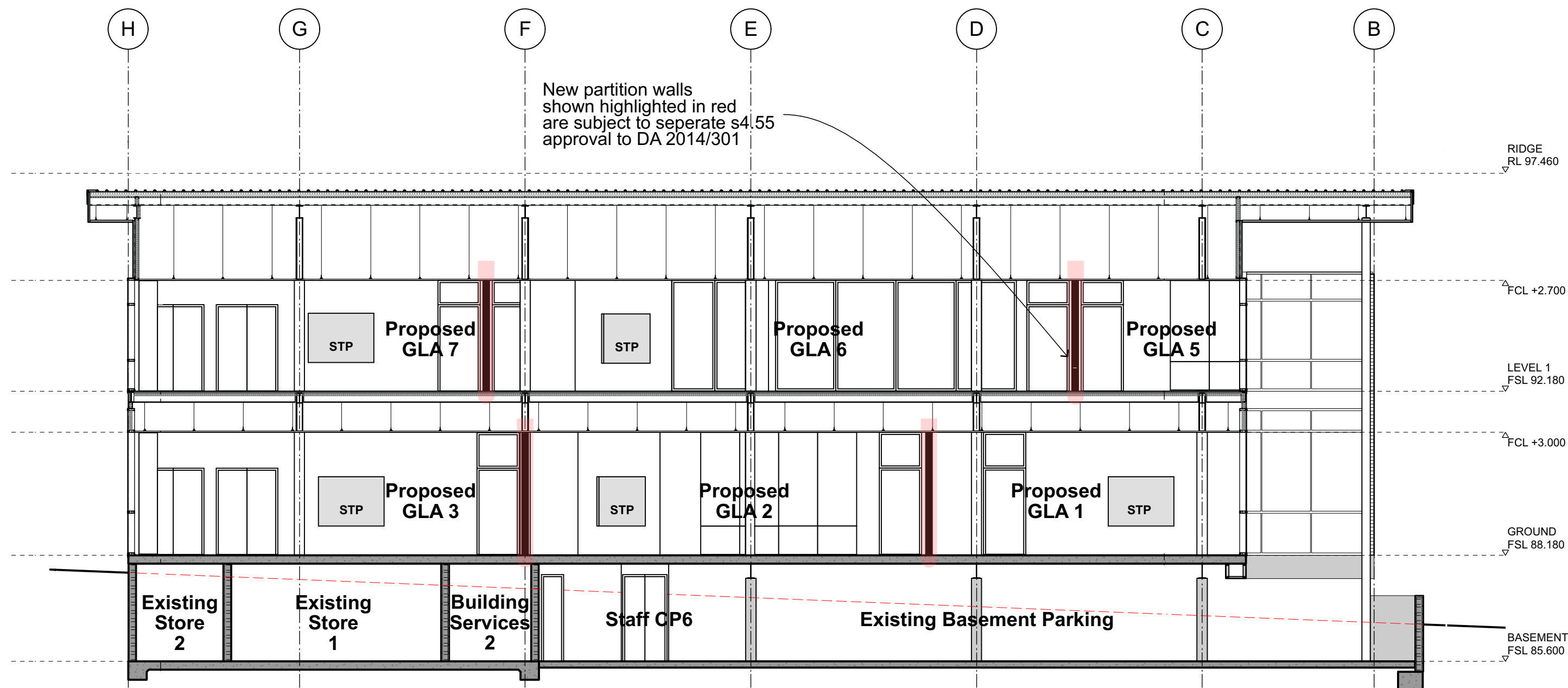
Project No;  
**2417.19**  
Drawing No;  
**SSD08**  
Revision#;  
**03**

Elevations - Sheet 02

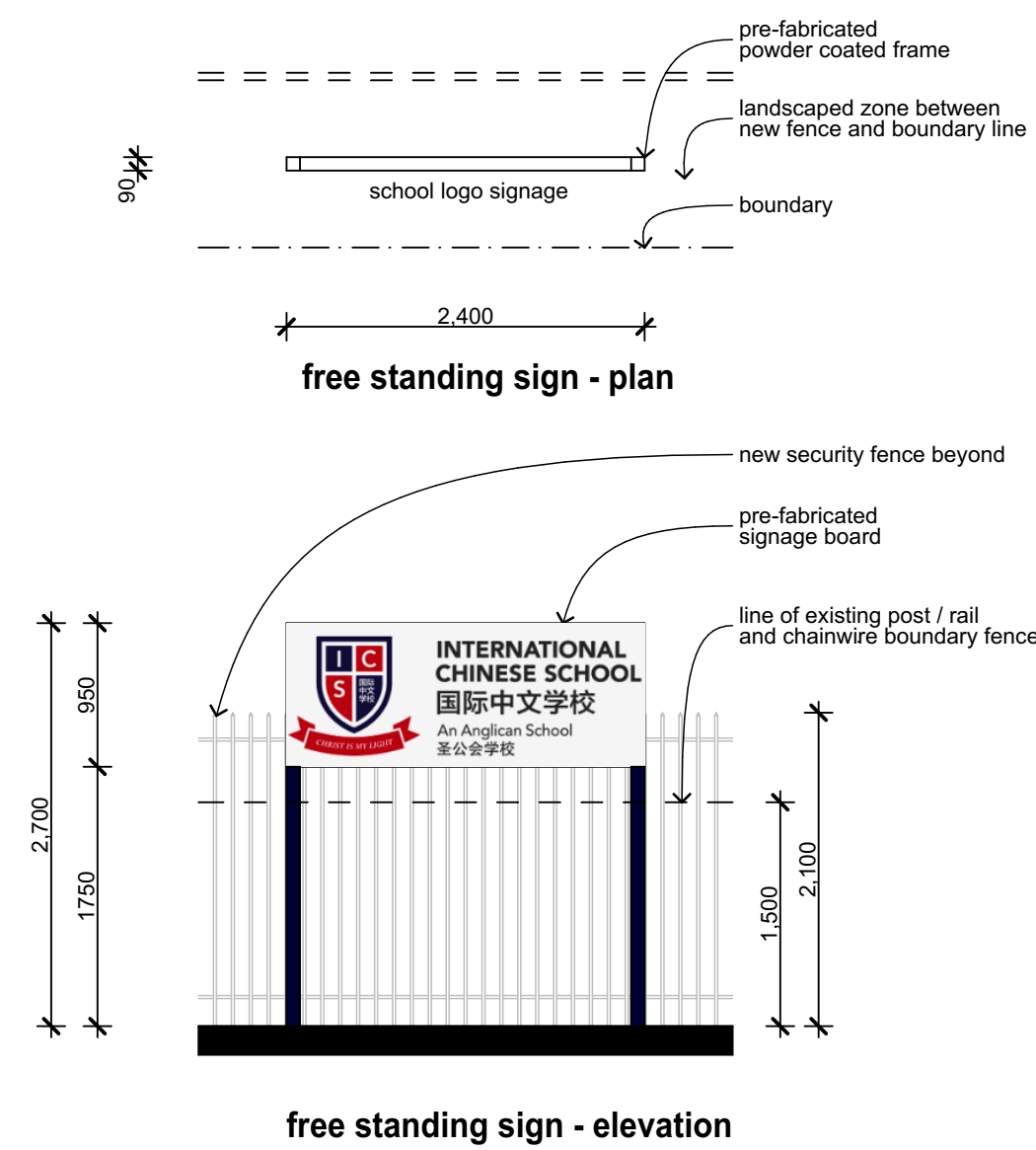




01 Section A  
1:100



02 Section B  
1:100



03 Signage Details - Typical  
1:50

Rev	Issue	Date
01	SSD DRAFT Issue	12.06.19
02	SSD Final DRAFT Issue	19.06.19
03	SSD Issue	26.06.19

