

CLIENT
QANTAS

PROJECT
DETAIL SURVEY
OF
QANTAS CATERING
FACILITY CARPARK AREA

NOTES
The title boundaries shown hereon were not marked at the time of survey and have been determined by plan dimensions only and not by field survey.
Services shown hereon have been located where possible by field survey. If not able to be so located, services have been plotted from the records of relevant authorities where available and have been noted accordingly on the plan. Where such records do not exist or are inadequate a notation has been made hereon.
Prior to any demolition, excavation or construction on the site, the relevant authority should be contacted for possible location of further underground services and detailed locations of all services.

A	GKO	03/10/2018	CLIENT ISSUE
PPP/CF	LPL	DD/MM/YY	COMMENT

SYM	CODE	DESCRIPTION	SYM	CODE	DESCRIPTION
○	BIN	BIN	○	OFM	OPTICAL FIBRE MARKER
△	BM	BENCH MARK	□	OPF	OPTICAL FIBRE PIT
●	BO	BOLLARD	○	TS	TELSTRA PIT
■	DJM	DRAINAGE MANHOLE	○	SE	SEAT
□	EFP	ELEC FUSE BOX	○	TS	SHRUB
⊗	ELP	ELEC GARDEN LIGHT	○	TCA	TELSTRA PIT
EL	EL	ELEC GREEN PILLAR	○	SLH	SEWER LAMP HOLE
LP	LP	ELEC LIGHT POLE	○	SMH	SEWER MANHOLE
EP	EP	ELEC SINGLE PIT	○	SVP	SEWER VENT PIPE
SPL	SPL	ELEC STAY POLE	SI	SI	SIGN
PP	PP	ELEC POWER POLE	BS	BS	BUS STOP SIGN
ELP	ELP	ELEC POLE LIGHT	T	T	TREE
TRANS	TRANS	ELE POLE/TRANSFORM	SGL	SGL	TRAFFIC LIGHT
FD	FD	FUEL DIP	SCL	SCL	TRAFFIC CONTROLLER
GM	GM	GAS MAIN	SJX	SJX	TRAFFIC JUNCTION BOX
GMR	GMR	GAS METER	US	US	UNKNOWN SERVICE
GAS	GAS	GAS VALVE	WAV	WAV	WATER AIR VALVE
AG	AG	GATE	WMR	WMR	WATER METER
GUL	GUL	GULLY PIT	WEP	WEP	WATER PUMP
HYD	HYD	HYDRANT	WSV	WSV	WATER STOP VALVE
BOR	BOR	BORHOLE	WTP	WTP	WATER TAP

Symbols shown are indicative only. The symbol size and orientation does not necessarily represent the real size or orientation of the feature.

DRAINAGE PIPE U/G	—SV—SV—SV—SV—SV—SV—
DRAIN	—S—S—S—S—S—S—
ELECT. CABLE A/G	—E—E—E—E—E—E—
ELEC. CABLE U/G	—W—W—W—W—W—W—
GAS PIPE	—G—G—G—G—G—G—
FENCE LINE	—F—F—F—F—F—F—
SEWERAGE PIPE	—S—S—S—S—S—S—
TELSTRA CABLE	—T—T—T—T—T—T—
WATER PIPE	—V—V—V—V—V—V—

LANDPARTNERS
built environment consultants

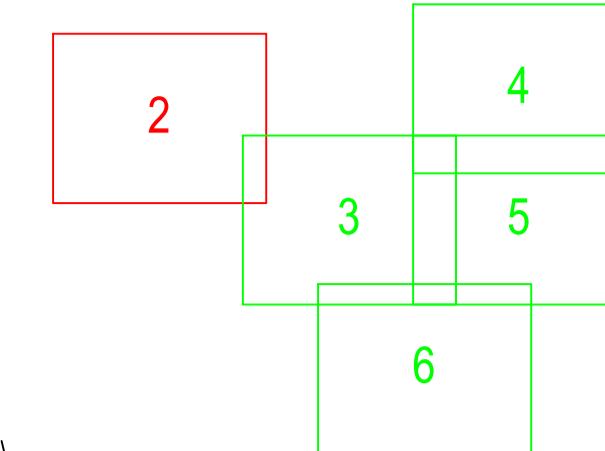
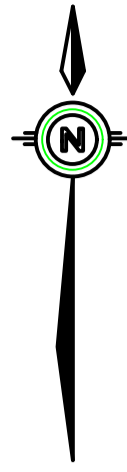
Sydney Office
Level 2, 23-29 South Street
Pyralmere NSW 2116
PO Box 1144
Dundas NSW 2117

(02) 9685 2000
info@landpartners.com.au
www.landpartners.com.au

ISO 9001:2008
FS 535693

HEIGHT DATUM	AHD	LOCAL AUTHORITY	BAYSIDE COUNCIL
HEIGHT ORIGIN	SSM96420 RL 9.902	SCALE	1:750 (A1)
MERIDIAN	ZONE 56	CONTOUR INTERVAL	0.2 Metre
CO-ORD SYSTEM	MGA	SURVEYOR	SA
		DATE OF SURVEY	26/09/2018
CCAD FILE	SY074560.000	DRAWN	TF
		DATE	11/10/2018
AUTOCAD FILE	SY074560.	CHECKED	GKO
		DATE	08/10/2018
ARCHIVE FILE	SY074560.	APPROVED	GKO
		DATE	08/10/2018
PLAN NUMBER	SY074560.000	SHEET 1 OF 6	REVISION
			A

©LANDPARTNERS 2018



CLIENT
QANTAS

PROJECT
**DETAIL SURVEY
OF
QANTAS CATERING
FACILITY CARPARK AREA**

NOTES
The title boundaries shown hereon were not marked at the time of survey and have been determined by plan dimensions only and not by field survey.
Services shown hereon have been located where possible by field survey. If not able to be so located, services have been plotted from the records of relevant authorities where available and have been noted accordingly on the plan. Where such records do not exist or are inadequate a notation has been made hereon.
Prior to any demolition, excavation or construction on the site, the relevant authority should be contacted for possible location of further underground services and detailed locations of all services.

A	GKO	03/10/2018	CLIENT ISSUE
PPP/CF	LPL	DD/MM/YY	COMMENT

SYM	CODE	DESCRIPTION	SYM	CODE	DESCRIPTION
○	BIN	BIN	○	OFM	OPTICAL FIBRE MARKER
△	BM	BENCH MARK	○	OPF	OPTICAL FIBRE PIT
●	BO	BOLLARD	○	TM	PALM TREE
□	DJM	DRAINAGE MANHOLE	—	SE	SEAT
⊗	EFP	ELEC FUSE BOX	○	TS	SHRUB
⊗	ELP	ELEC GARDEN LIGHT	○	TCA	TELSTRA PIT
⊗	EL	ELEC GREEN PILLAR	○	SLH	SEWER LAMP HOLE
⊗	LP	ELEC LIGHT POLE	○	SMH	SEWER MANHOLE
⊗	EP	ELEC SINGLE PIT	○	SVP	SEWER VENT PIPE
⊗	SPL	ELEC STAY POLE	—	SI	SIGN
⊗	PP	ELEC POWER POLE	—	BS	BUS STOP SIGN
⊗	ELP	ELEC POLE/LIGHT	⊗	T	TREE
⊗	TRANS	ELEC POLE/TRANSFORM	⊗	SGL	TRAFFIC LIGHT
⊗	FD	FUEL DIP	⊗	SCL	TRAFFIC CONTROLLER
⊗	GM	GAS MAIN	⊗	SJX	TRAFFIC JUNCTION BOX
⊗	GMR	GAS METER	⊗	US	UNKNOWN SERVICE
⊗	GAS	GAS VALVE	⊗	WAV	WATER AIR VALVE
⊗	AG	GATE	⊗	WMR	WATER METER
⊗	GUL	GULLY PIT	⊗	WEP	WATER PUMP
⊗	HYD	HYDRANT	⊗	WSV	WATER STOP VALVE
⊗	BOR	BORHOLE	⊗	WTP	WATER TAP

Symbols shown are indicative only. The symbol size and orientation does not necessarily represent the real size or orientation of the feature.

DRAINAGE PIPE U/G	—
DRAIN	—
ELECT. CABLE A/G	—
ELEC. CABLE U/G	—
GAS PIPE	—
FENCE LINE	—
SEWERAGE PIPE	—
TELSTRA CABLE	—
WATER PIPE	—

LANDPARTNERS
built environment consultants

Sydney Office
Level 2, 23-29 South Street
Pyralme NSW 2116
PO Box 1144
Dundas NSW 2117

(02) 9685 2000
e info@landpartners.com.au
w www.landpartners.com.au

60 9001 2008
FS 535663

HEIGHT DATUM AHD	LOCAL AUTHORITY BAYSIDE COUNCIL
HEIGHT ORIGIN SSM96420 RL 9.902	SCALE 1:250 (A1)
MERIDIAN ZONE 56	CONTOUR INTERVAL 0.2 Metre
CO-ORD SYSTEM MGA	SURVEYOR SA
DATE OF SURVEY 26/09/2018	DATE 11/10/2018
CCAD FILE SY074560.000	DRAWN TF
AUTOCAD FILE SY074560.	CHECKED GKO
DATE 08/10/2018	DATE 08/10/2018
ARCHIVE FILE SY074560.	APPROVED GKO
DATE 08/10/2018	DATE 08/10/2018
PLAN NUMBER SY074560.000	SHEET 2 OF 6
REVISION A	

- (A) RIGHT OF WAY 4M WIDE DP 1036794
- (B) EASEMENT FOR PROPOSED RIGHT OF WAY DP1036794
- (C) EASEMENT FOR DRAINAGE 3.96 DP202747
- (D) EASEMENT FOR ACCESS 3.66 DP202747
- (E) EASEMENT FOR RIGHT OF WAY AND EASEMENT FOR ELECTRICITY PURPOSES 2.83 WIDE

TREE DETAIL

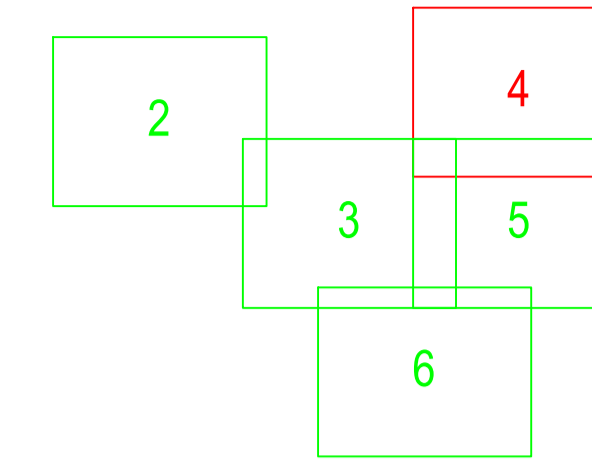
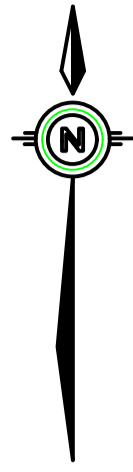
— HEIGHT (m) is 10 + 10m HIGH
— TRUNK (m) is 05 + 40.5m DIAMETER
— SPREAD (m) is 510 + 10m DIAMETER

TREE SYMBOLS ARE A TRUE REPRESENTATION OF THE SPREAD
* SYMBOL SIZE 2 (X - Y VALUE) = 2m SPREAD

2m DIAMETER SPREAD

THERE ARE LAYERS WITHIN THIS CAD PLAN THAT HAVE BEEN TURNED OFF FOR CLARITY PURPOSES

LEGEND
2.48INV DENOTES INVERT LEVEL
19.63RR DENOTES ROOF RIDGE LEVEL



CLIENT

QANTAS

PROJECT

**DETAIL SURVEY
OF
QANTAS CATERING
FACILITY CARPARK AREA**

NOTES

The title boundaries shown hereon were not marked at the time of survey and have been determined by plan dimensions only and not by field survey.
Services shown hereon have been located where possible by field survey. If not able to be so located, services have been plotted from the records of relevant authorities where available and have been noted accordingly on the plan. Where such records do not exist or are inadequate a notation has been made hereon.
Prior to any demolition, excavation or construction on the site, the relevant authority should be contacted for possible location of further underground services and detailed locations of all services.

A	GKO	03/10/2018	CLIENT ISSUE
PPP/CF	LPL	DD/MM/YY	COMMENT

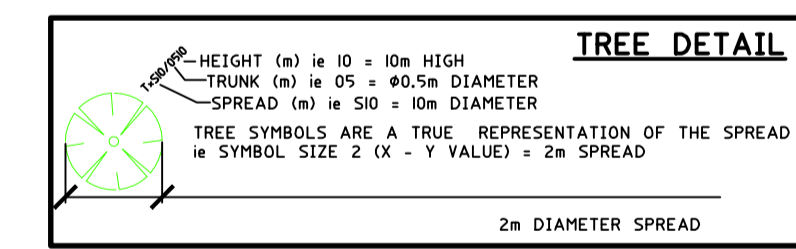
SYM	CODE	DESCRIPTION	SYM	CODE	DESCRIPTION
○	BIN	BIN	○	OFM	OPTICAL FIBRE MARKER
△	BM	BENCH MARK	○	OFP	OPTICAL FIBRE PIT
●	BO	BOLLARD	○	TM	PALM TREE
□	DJM	DRAINAGE MANHOLE	—	SE	SEAT
⊗	EFP	ELEC FUSE BOX	—	TS	SHRUB
⊗	ELP	ELEC GARDEN LIGHT	○	TCA	TELSTRA PIT
⊗	EL	ELEC GREEN PILLAR	○	SLH	SEWER LAMP HOLE
—	LP	ELEC LIGHT POLE	○	SMH	SEWER MANHOLE
○	EP	ELEC SINGLE PIT	○	SVP	SEWER VENT PIPE
○	SPL	ELEC STAY POLE	—	SI	SIGN
○	PP	ELEC POWER POLE	—	BS	BUS STOP SIGN
—	ELP	ELEC POLE/LIGHT	○	T	TREE
—	TRANS	ELE POLE/TRANSFORM	⊗	SGL	TRAFFIC LIGHT
○	FD	FUEL DIP	□	SCL	TRAFFIC CONTROLLER
○	GM	GAS MAIN	□	SJX	TRAFFIC JUNCTION BOX
○	GMR	GAS METER	□	US	UNKNOWN SERVICE
○	GAS	GAS VALVE	—	WAV	WATER AIR VALVE
—	AG	GATE	—	WMR	WATER METER
—	GUL	GULLY PIT	—	WEP	WATER PUMP
—	HYD	HYDRANT	—	WSV	WATER STOP VALVE
○	BOR	BORHOLE	—	WTP	WATER TAP

Symbols shown are indicative only. The symbol size and orientation does not necessarily represent the real size or orientation of the feature.

- (A) RIGHT OF WAY 4M WIDE DP 1036794
- (B) EASEMENT FOR PROPOSED RIGHT OF WAY DP1036794
- (C) EASEMENT FOR DRAINAGE 3.96 DP202747
- (D) EASEMENT FOR ACCESS 3.66 DP202747
- (E) EASEMENT FOR RIGHT OF WAY AND EASEMENT FOR ELECTRICITY PURPOSES 2.83 WIDE

THERE ARE LAYERS WITHIN THIS CAD PLAN THAT HAVE BEEN TURNED OFF FOR CLARITY PURPOSES

LEGEND
2.48NV DENOTES INVERT LEVEL
19.63RR DENOTES ROOF RIDGE LEVEL



ADJOINS PAGE 5

Sydney Office
Level 2, 23-29 South Street
Pyralmere NSW 2116
PO Box 1144
Dundas NSW 2117

(02) 9685 2000
e info@landpartners.com.au
w www.landpartners.com.au

650 9001 2008
FS 535693

HEIGHT DATUM AHD	LOCAL AUTHORITY BAYSIDE COUNCIL
HEIGHT ORIGIN SSM96420 RL 9.902	SCALE 1:250 (A1)
MERIDIAN ZONE 56	CONTOUR INTERVAL 0.2 Metre
CO-ORD SYSTEM MGA	SURVEYOR SA
DATE OF SURVEY 26/09/2018	DATE 11/10/2018
DRAWN TF	CHECKED GKO
DATE 08/10/2018	DATE 08/10/2018
APPROVED GKO	DATE 08/10/2018
PLAN NUMBER SY074560.000	SHEET 4 OF 6
REVISION A	



ADJOINS PAGE 3

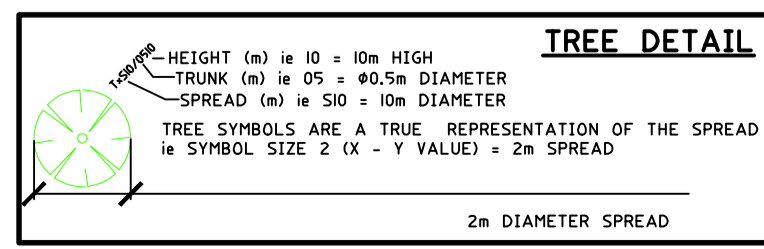
ADJOINS PAGE 6

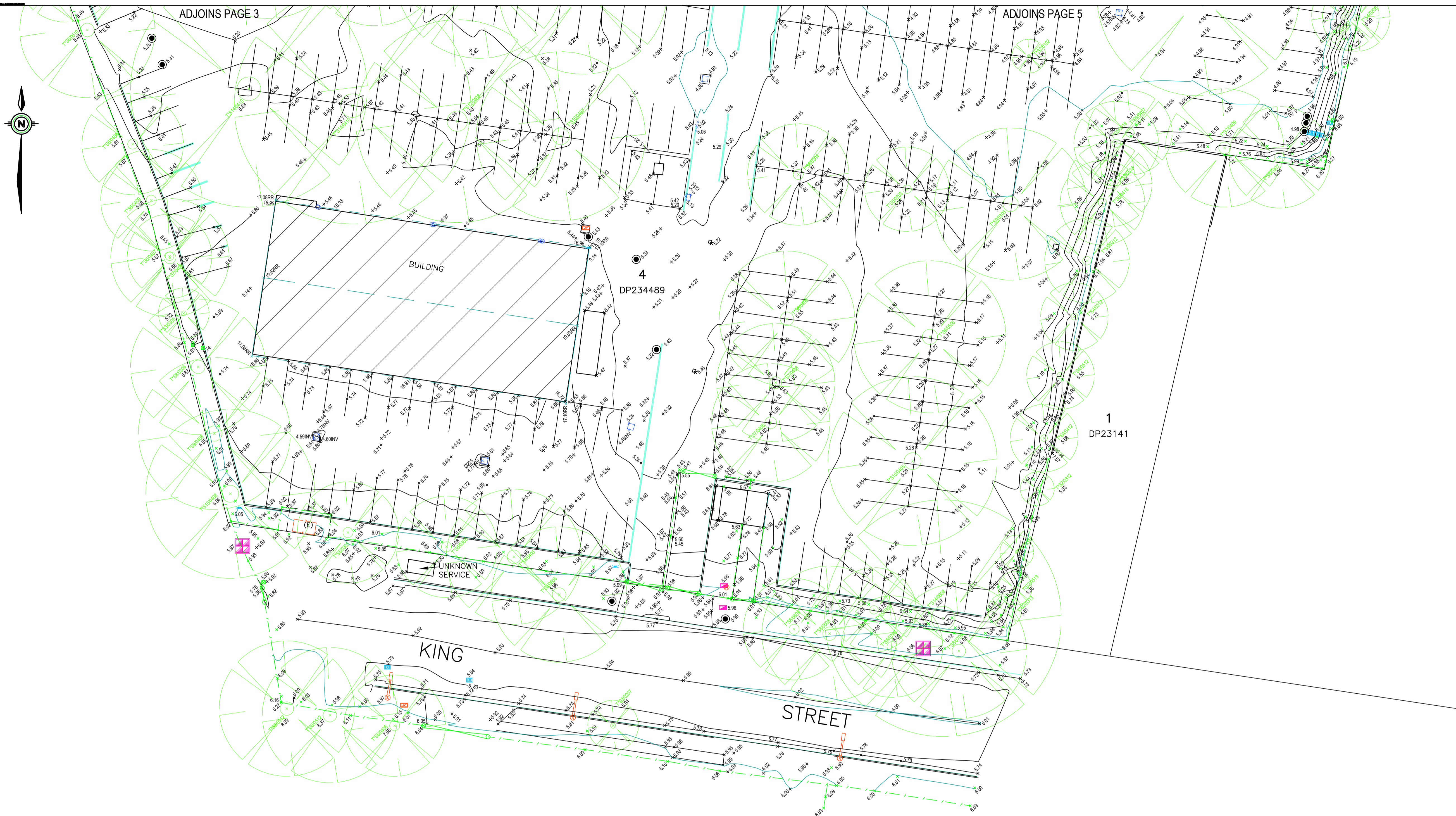
CLIENT					
QANTAS					
PROJECT					
DETAIL SURVEY OF QANTAS CATERING FACILITY CARPARK AREA					
NOTES					
<p>The title boundaries shown hereon were not marked at the time of survey and have been determined by plan dimensions only and not by field survey.</p> <p>Services shown hereon have been located where possible by field survey. If not able to be so located, services have been plotted from the records of relevant authorities where available and have been noted accordingly on the plan. Where such records do not exist or are inadequate a notation has been made hereon.</p> <p>Prior to any demolition, excavation or construction on the site, the relevant authority should be contacted for possible location of further underground services and detailed locations of all services.</p>					
A	GKO	03/10/2018	CLIENT ISSUE		
PPP/CF	LPL	DD/MM/YY	COMMENT		
SYM	CODE	DESCRIPTION	SYM	CODE	DESCRIPTION
○	BIN	BIN	○	OFM	OPTICAL FIBRE MARKER
●	BM	BENCH MARK	○	OFP	OPTICAL FIBRE PIT
○	BO	BOLLARD	○	TM	PALM TREE
○	DJM	DRAINAGE MANHOLE	○	SE	SEAT
○	EFP	ELEC FUSE BOX	○	TS	SHRUB
○	ELP	ELEC GARDEN LIGHT	○	TCA	TELSTRA PIT
○	EL	ELEC GREEN PILLAR	○	SLH	SEWER LAMP HOLE
○	LP	ELEC LIGHT POLE	○	SMH	SEWER MANHOLE
○	EP	ELEC SINGLE PIT	○	SVP	SEWER VENT PIPE
○	SPL	ELEC STAY POLE	○	SI	SIGN
○	PP	ELEC POWER POLE	○	BS	BUS STOP SIGN
○	ELP	ELEC POLE LIGHT	○	T	TREE
○	TRANS	ELEC POLE/TRANSFORM	○	SGL	TRAFFIC LIGHT
○	FD	FUEL DIP	○	SCL	TRAFFIC CONTROLLER
○	GM	GAS MAIN	○	SJX	TRAFFIC JUNCTION BOX
○	GMR	GAS METER	○	US	UNKNOWN SERVICE
○	GV	GAS VALVE	○	WAV	WATER AIR VALVE
○	AG	GATE	○	WMR	WATER METER
○	GUL	GULLY PIT	○	WEP	WATER PUMP
○	HYD	HYDRANT	○	WSV	WATER STOP VALVE
○	BR	BORHOLE	○	WTP	WATER TAP
Symbols shown are indicative only. The symbol size and orientation does not necessarily represent the real size or orientation of the feature.					
DRAINAGE PIPE U/G	---	---	---	---	---
DRAIN	---	---	---	---	---
ELECT. CABLE A/G	---	---	---	---	---
ELEC. CABLE U/G	---	---	---	---	---
GAS PIPE	---	---	---	---	---
FENCE LINE	---	---	---	---	---
SEWERAGE PIPE	---	---	---	---	---
TELSTRA CABLE	---	---	---	---	---
WATER PIPE	---	---	---	---	---
<p>Sydney Office Level 2, 23-29 South Street Pyralmere NSW 2116 PO Box 1144 Dundas NSW 2117</p> <p>(02) 9685 2000 info@landpartners.com.au www.landpartners.com.au</p> <p>60 9001 2008 FS 535663</p>					
HEIGHT DATUM		LOCAL AUTHORITY			
AHD		BAYSIDE COUNCIL			
HEIGHT ORIGIN		SCALE			
SSM96420 RL 9.902		1:250 (A1)			
MERIDIAN		CONTOUR INTERVAL			
ZONE 56		0.2 Metre			
CO-ORD SYSTEM		SURVEYOR		DATE OF SURVEY	
MGA		SA		26/09/2018	
CAD FILE		DRAWN		DATE	
SY074560.000		TF		11/10/2018	
AUTOCAD FILE		CHECKED		DATE	
SY074560.		GKO		08/10/2018	
ARCHIVE FILE		APPROVED		DATE	
SY074560.		GKO		08/10/2018	
PLAN NUMBER		SHEET 5 OF 6			REVISION
SY074560.000					A

- (A) RIGHT OF WAY 4M WIDE DP 1036794
- (B) EASEMENT FOR PROPOSED RIGHT OF WAY DP1036794
- (C) EASEMENT FOR DRAINAGE 3.96 DP202747
- (D) EASEMENT FOR ACCESS 3.66 DP202747
- (E) EASEMENT FOR RIGHT OF WAY AND EASEMENT FOR ELECTRICITY PURPOSES 2.83 WIDE

THERE ARE LAYERS WITHIN THIS CAD PLAN THAT HAVE BEEN TURNED OFF FOR CLARITY PURPOSES

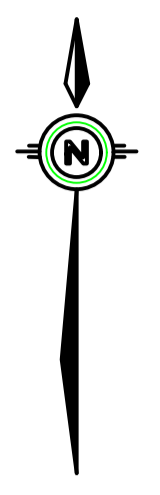
LEGEND
2.48INV DENOTES INVERT LEVEL
19.63RR DENOTES ROOF RIDGE LEVEL





ADJOINS PAGE 3

ADJOINS PAGE 5



BUILDING

4
DP234489

1
DP23141

KING

STREET

UNKNOWN SERVICE

CLIENT
QANTAS

PROJECT
**DETAIL SURVEY
OF
QANTAS CATERING
FACILITY CARPARK AREA**

NOTES
The title boundaries shown hereon were not marked at the time of survey and have been determined by plan dimensions only and not by field survey.
Services shown hereon have been located where possible by field survey. If not able to be located, services have been plotted from the records of relevant authorities where available and have been noted accordingly on the plan. Where such records do not exist or are inadequate a notation has been made hereon.
Prior to any demolition, excavation or construction on the site, the relevant authority should be contacted for possible location of further underground services and detailed locations of all services.

A	GKO	03/10/2018	CLIENT ISSUE
---	-----	------------	--------------

PPP/CF LPL DD/MM/YY COMMENT

SYM	CODE	DESCRIPTION	SYM	CODE	DESCRIPTION
○	BIN	BIN	○	OFM	OPTICAL FIBRE MARKER
△	BM	BENCH MARK	□	OPF	OPTICAL FIBRE PIT
●	BO	BOLLARD	○	TM	PALM TREE
□	DJM	DRAINAGE MAN-HOLE	—	SE	SEAT
⊗	EFP	ELEC FUSE BOX	○	TS	SHRUB
⊗	ELP	ELEC GARDEN LIGHT	○	TCA	TELSTRA PIT
□	EL	ELEC GREEN PILLAR	○	SLH	SEWER LAMP HOLE
—	LP	ELEC LIGHT POLE	○	SMH	SEWER MAN-HOLE
○	EP	ELECT SINGLE PIT	○	SVP	SEWER VENT PIPE
○	SPL	ELEC STAY POLE	—	SI	SIGN
○	PP	ELEC POWER POLE	—	BS	BUS STOP SIGN
—	ELP	ELEC POLE/LIGHT	○	T	TREE
⊗	TRANS	ELE POLE/TRANSFORM	○	SGL	TRAFFIC LIGHT
○	FD	FUEL DIP	□	SCL	TRAFFIC CONTROLLER
○	GM	GAS MAIN	□	SJX	TRAFFIC JUNCTION BOX
○	GMR	GAS METER	□	US	UNKNOWN SERVICE
○	GAS	GAS VALVE	□	WAV	WATER AIR VALVE
—	AG	GATE	□	WMR	WATER METER
□	GUL	GULLY PIT	□	WEP	WATER PUMP
□	HYD	HYDRANT	○	WSV	WATER STOP VALVE
○	BOR	BORHOLE	—	WTP	WATER TAP

Symbols shown are indicative only. The symbol size and orientation does not necessarily represent the real size or orientation of the feature.

DRAINAGE PIPE U/G	—
DRAIN	—
ELECT. CABLE A/G	—
ELEC. CABLE U/G	—
GAS PIPE	—
FENCE LINE	—
SEWERAGE PIPE	—
TELSTRA CABLE	—
WATER PIPE	—

LANDPARTNERS
built environment consultants

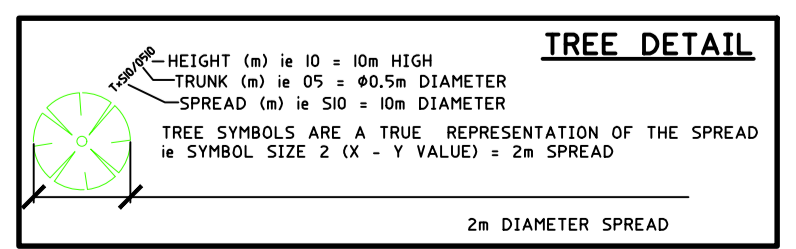
Sydney Office
Level 2, 23-29 South Street
Pyralme NSW 2116
PO Box 1144
Dundas NSW 2117

(02) 9685 2000
e info@landpartners.com.au
w www.landpartners.com.au

60 9001 2008
FS 535693

HEIGHT DATUM AHD	LOCAL AUTHORITY BAYSIDE COUNCIL
HEIGHT ORIGIN SSM96420 RL 9.902	SCALE 1:250 (A1)
MERIDIAN ZONE 56	CONTOUR INTERVAL 0.2 Metre
CO-ORD SYSTEM MGA	SURVEYOR SA
OCAD FILE SY074560.000	DATE OF SURVEY 26/09/2018
AUTOCAD FILE SY074560.	DRAWN TF
ARCHIVE FILE SY074560.	DATE 11/10/2018
	CHECKED GKO
	DATE 08/10/2018
	APPROVED GKO
	DATE 08/10/2018
PLAN NUMBER SY074560.000	SHEET 6 OF 6
	REVISION A

THERE ARE LAYERS WITHIN THIS CAD PLAN THAT HAVE BEEN TURNED OFF FOR CLARITY PURPOSES



- (A) RIGHT OF WAY 4M WIDE DP 1036794
- (B) EASEMENT FOR PROPOSED RIGHT OF WAY DP1036794
- (C) EASEMENT FOR DRAINAGE 3.96 DP202747
- (D) EASEMENT FOR ACCESS 3.66 DP202747
- (E) EASEMENT FOR RIGHT OF WAY AND EASEMENT FOR ELECTRICITY PURPOSES 2.83 WIDE

LEGEND
2.48INV DENOTES INVERT LEVEL
19.63RR DENOTES ROOF RIDGE LEVEL

