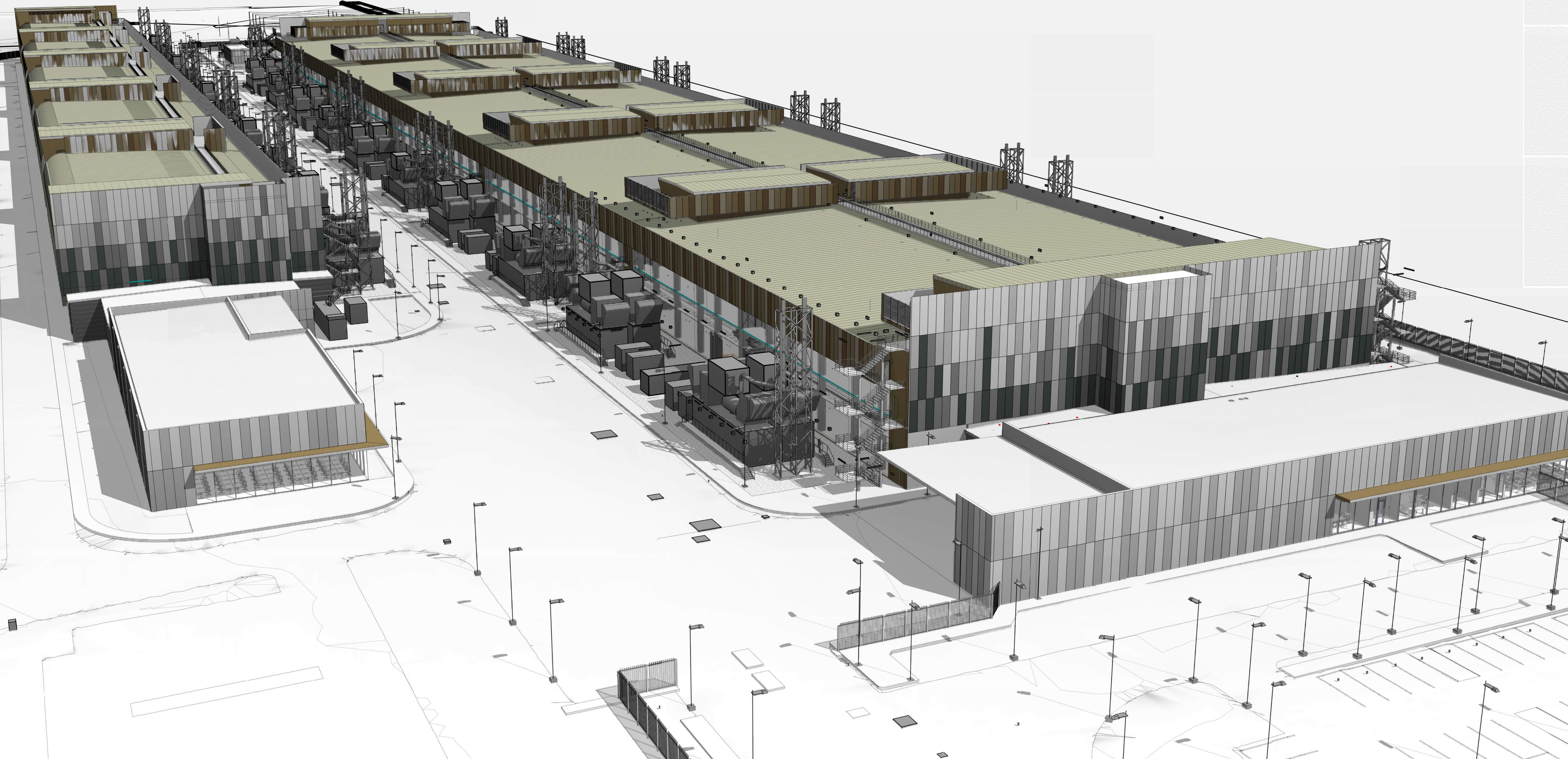


# KEMPS CREEK SYD DC

## STATE SIGNIFICANT DEVELOPMENT APPLICATION (SSDA)

ARCHITECTURAL SSDA SET			
SHEET NUMBER	SHEET NAME	REVISION	DATE
SYD05-06-07_A-A-000	COVER SHEET	3	06/08/2021
SYD05-06-07_A-B-001	SITE ANALYSIS PLAN - ENLARGED	2	19/03/2021
SYD05-06-07_A-B-003	MASTER PLAN	3	19/03/2021
SYD05-06-07_A-B-005	PHASING DIAGRAMS	2	19/03/2021
SYD05-06-07_A-B-007	GFA CALCULATIONS	4	26/06/2021
SYD05-06-07_A-B-008	SHADOW DIAGRAMS	2	19/03/2021
SYD05-06-07_A-G-101	LEVEL 1 PLAN	3	19/03/2021
SYD05-06-07_A-G-202	LEVEL 2 AND ROOF PLANS	3	19/03/2021
SYD05-06-07_A-G-101	SYD05-06 PLANS	3	19/03/2021
SYD05-06-07_A-G-102	SYD07 PLANS	3	19/03/2021
SYD05-06-07_A-H-000	ELEVATIONS - SYD05-06	3	19/03/2021
SYD05-06-07_A-H-001	ELEVATIONS - SYD07	3	19/03/2021
SYD05-06-07_A-H-002	ELEVATIONS - SYD05-06 - ENLARGED ELEVATIONS	3	19/03/2021
SYD05-06-07_A-H-003	ELEVATIONS - SYD05-06 - ENLARGED ELEVATIONS	3	19/03/2021
SYD05-06-07_A-H-005	ELEVATIONS - SYD07 - ENLARGED ELEVATIONS	3	19/03/2021
SYD05-06-07_A-H-006	ELEVATIONS - SYD07 - ENLARGED ELEVATIONS	3	19/03/2021
SYD05-06-07_A-H-007	SUBSTATION ELEVATIONS	1	06/08/2021
SYD05-06-07_A-H-008	SUBSTATION - STREETSCAPE ARCHITECTURAL ILLUSTRATION	1	06/08/2021
SYD05-06-07_A-H-009	SECTIONS	3	19/03/2021
SYD05-06-07_A-H-001	SECTIONS - SYD05-06 - ENLARGED	3	19/03/2021
SYD05-06-07_A-H-002	SECTIONS - SYD07 - ENLARGED	3	19/03/2021



Approvals	
Customer	Date

- General Notes:
- A. This is not an installation drawing and shows design intent information only.
- B. All dimensions are in millimeters (mm) unless noted otherwise. All levels are in metres (m) unless stated otherwise.
- C. Do not scale work to figures dimensions only. This drawing shall be read in conjunction with building services documents and other relevant contract documents.
- D. Equipment and plant details are not manufacturer specific. Contractor selected equipment shall meet the given constraints and long lead equipment will be coordinated based on final equipment selection.
- E. All service penetrations through fire, acoustic thermal, air and watertight compartments shall be sealed to achieve performance rating equivalent to the compartment and shall be designed to accommodate movement.
- F. All services penetrations through fire rated compartments shall be fire stopped to achieve a rating equivalent to the compartment and shall be designed to accommodate thermal movement.
- G. All services crossing the movement joints shall be installed to accommodate the movements as defined in the Structural Engineers Contract documentation.
- H. The Contractor will produce fully coordinated installation drawings prior to installation for approval.
- I. The Contractor will produce as built drawings prior to handover for approval.

Week	Date	Description
1	19/03/2021	DRAFT SSDA - WIP
2	19/03/2021	SSDA ISSUE
3	06/08/2021	SSDA ISSUE

**ARUP**  
Arup, Level 5 Barrack Place, 151 Clarence St  
Sydney, NSW, 2000  
Tel +61(02)9320 9320  
www.arup.com

**GREENBOX**  
+61 2 8089 8830  
LEVEL 25  
25 BLIGH ST  
SYDNEY NSW 2000 AUSTRALIA  
GREENBOX ARCHITECTURE PTY LTD  
ABN: 79 139 779 058  
ISO 9001 CERTIFIED QUALITY SYSTEM

Client:  
PROPOSER

Project Title:  
SYD05-06-07  
KEMPS CREEK

Key Plan

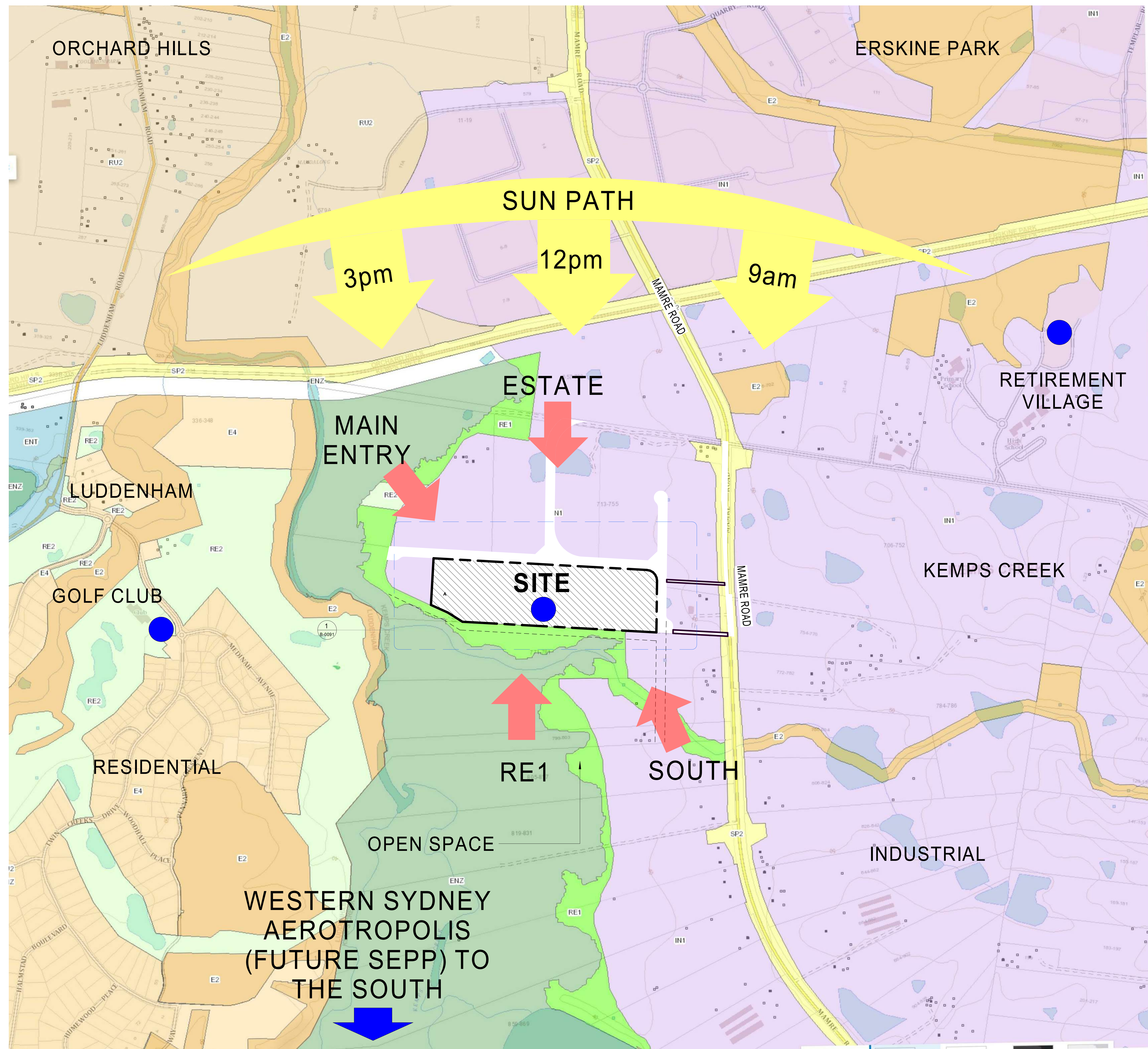
Drawing Title:  
COVER SHEET

Scale at A3		Drawn By	AH, JN, AG
Role	Architecture	Checked By	MP
Suitability	A3	Approved By	AO
Job No	200036	Rev	3

Sheet number:  
SYD05-06-07\_A-A-0000

Scale 1:1



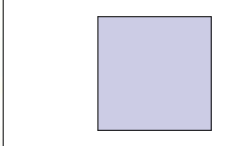


**LEGEND:**

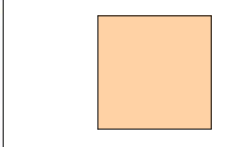
SUN PATH (WINTER SOLSTICE)



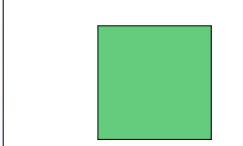
## KEY VIEWS



INDUSTRIAL ZONE



RESIDENTIAL ZONE



## OPEN SPACE AND ENVIRONMENTAL CONSERVATION

NOTE: LAND ZONE MAP IN ACCORDANCE WITH;

ENZ - Environment and Recreation: (pub. 11-9-2020)

RE1 - Public Recreation: (pub. 11-9-2020)

SP2 - Infrastructure: (pub. 11-9-2020)

Issue	Date	Description
1	15/03/2021	DRAFT SSDA - WIP
2	19/03/2021	SSDA ISSUE

ARUP

Arup, Level 5 Barrack Place, 151 Clarence St  
Sydney, NSW, 2000  
Tel +61(0)2 9320 9320  
www.arup.com

GREENBOX

+61 2 8069 8930

LEVEL 25  
25 BLIGH ST  
SYDNEY NSW 2000 AUSTRALIA

GREENBOX ARCHITECTURE PTY LTD  
ABN: 79 139 779 098  
ISO 9001 CERTIFIED QUALITY SYSTEM

Client  
PROPONENT

Project Title  
SYD05-06-07  
KEMPS CREEK

### Key Plan

Drawing Title  
**SITE ANALYSIS PLAN**

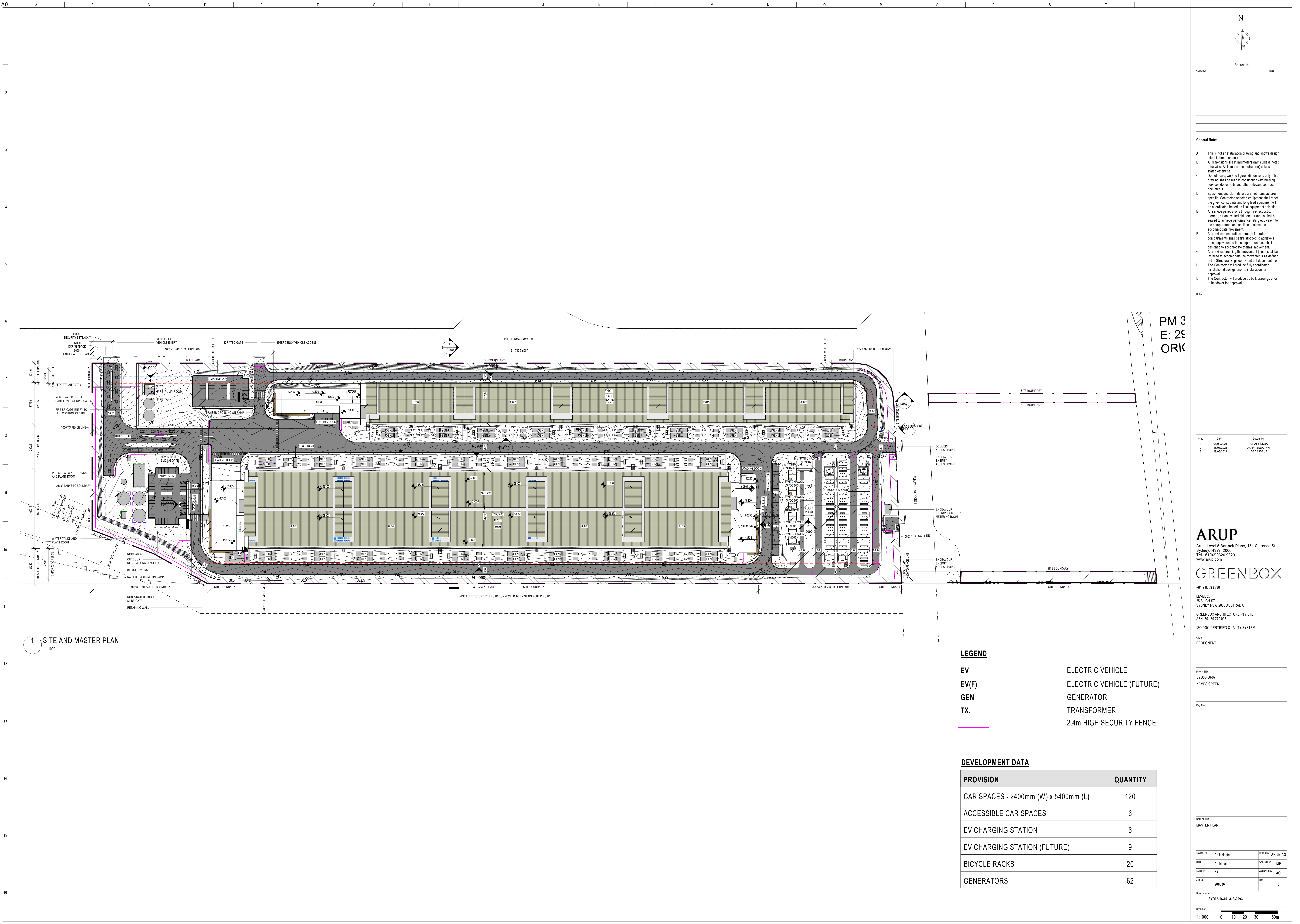
Scale at A0	1 : 5000	Drawn By	AH, JN, AG
Role	Architecture	Checked By	MP
Suitability	A3	Approved By	AO
Job No	200836	Rev	2

SYD05-06-07\_A-B-0090









Approvals

Customer	Date

- General Notes:
- A. This is not an installation drawing and shows design intent information only.
  - B. All dimensions are in millimeters (mm) unless noted otherwise. All levels are in metres (m) unless stated otherwise.
  - C. Do not scale work to figures dimensions only. This drawing shall be read in conjunction with building services documents and other relevant contract documents.
  - D. Equipment and plant details are not manufacturer specific. Contractor selected equipment shall meet the given constraints and long lead equipment will be coordinated based on final equipment selection.
  - E. All service penetrations through fire, acoustic, thermal, air and watertight compartments shall be sealed to achieve performance rating equivalent to the compartment and shall be designed to accommodate movement.
  - F. All services penetrations through fire rated compartments shall be fire stopped to achieve a rating equivalent to the compartment and shall be designed to accommodate thermal movement.
  - G. All services crossing the movement joints shall be installed to accommodate the movements as defined in the Structural Engineers Contract documentation.
  - H. The Contractor will produce fully coordinated installation drawings prior to installation for approval.
  - I. The Contractor will produce as built drawings prior to handover for approval.

Notes:

Issue	Date	Description
1	20/03/2021	DRAFT SSQA
2	18/05/2021	DRAFT SSQA - WIP
3	19/03/2021	SSQA ISSUE

**ARUP**  
Arup, Level 5 Barrack Place, 151 Clarence St  
Sydney, NSW, 2000  
Tel +61(02)9320 9320  
www.arup.com

**GREENBOX**  
+61 2 8089 8930  
LEVEL 25  
25 BUGH ST  
SYDNEY NSW 2000 AUSTRALIA  
GREENBOX ARCHITECTURE PTY LTD  
ABN: 79 139 779 058  
ISO 9001 CERTIFIED QUALITY SYSTEM

Client: PROPONENT

Project Title: SYD05-06-07 KEMPS CREEK

Key Plan

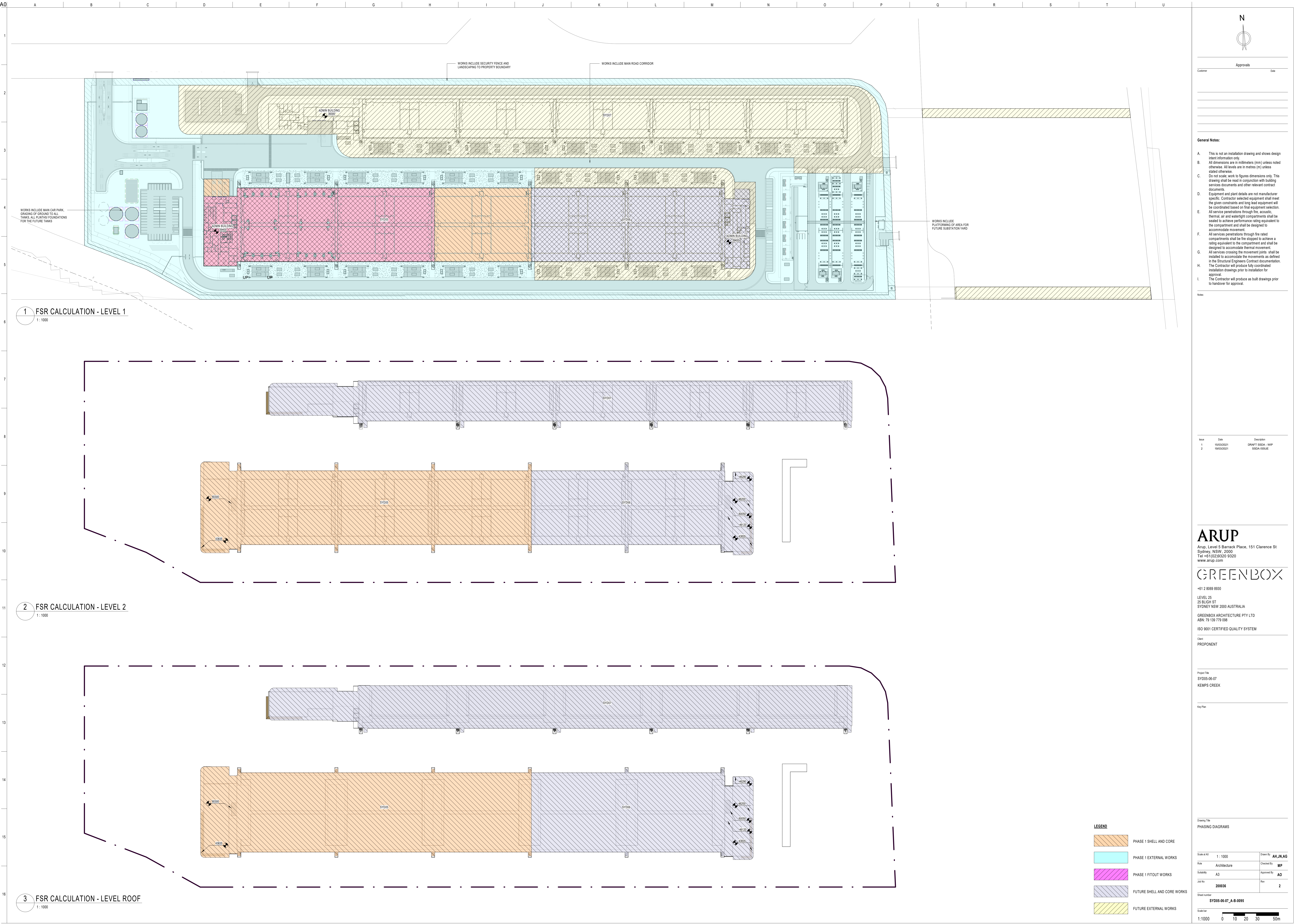
Drawing Title: MASTER PLAN

Scale at A3	As indicated	Drawn By	AH_JN_AG
Role	Architecture	Checked By	MP
Subsidiary	A3	Approved By	AD
Job No	200036	Rev	3

Sheet number: SYD05-06-07\_A-8-0093

Scale bar: 1:1000 0 10 20 30 50m

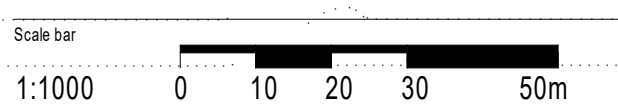




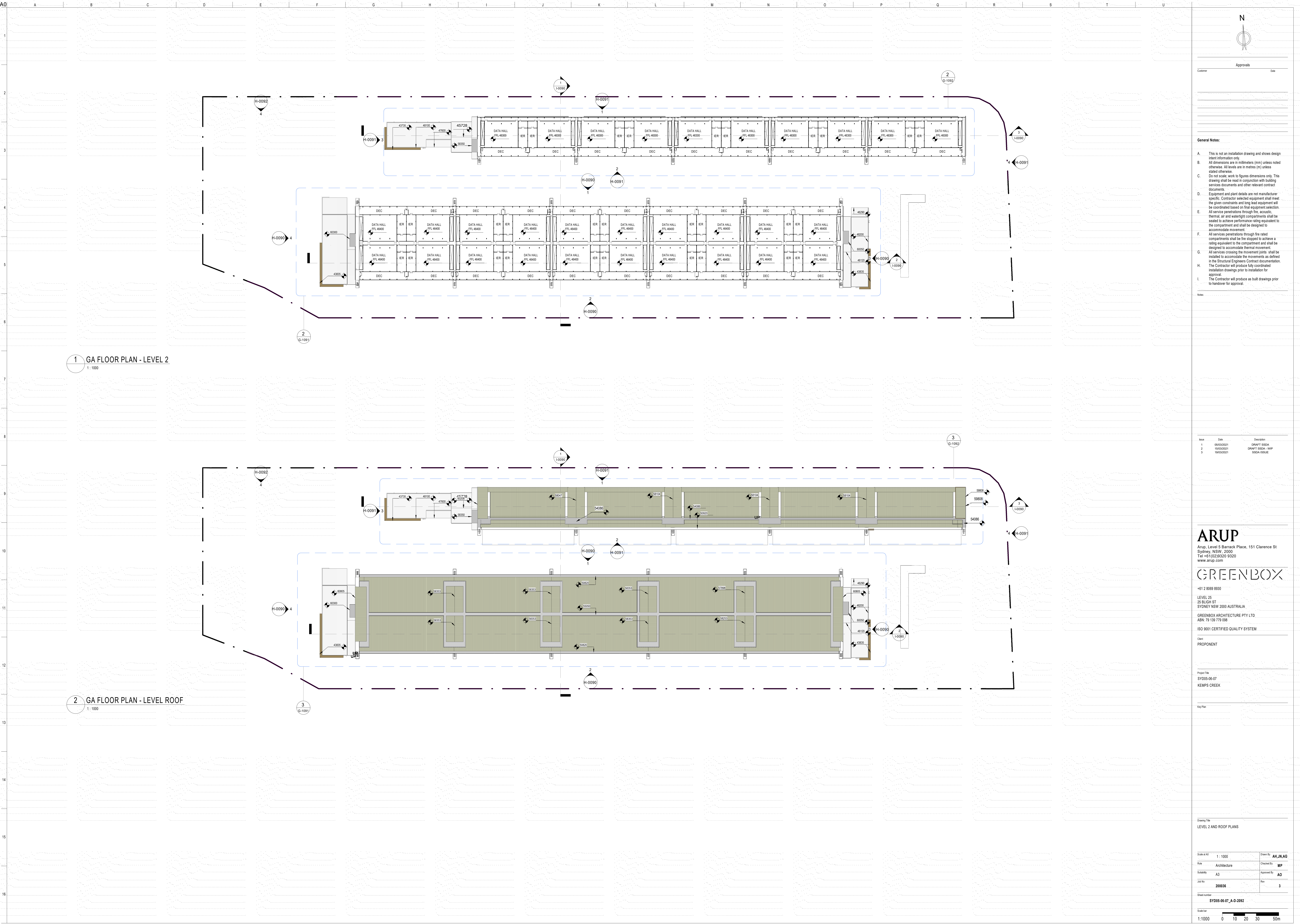












Approvals	
Customer	Doc

- General Notes:
- A. This is not an installation drawing and shows design intent information only.
  - B. All dimensions are in millimeters (mm) unless noted otherwise. All levels are in metres (m) unless stated otherwise.
  - C. Do not scale work to figures dimensions only. This drawing shall be read in conjunction with building services documents and other relevant contract documents.
  - D. Equipment and plant details are not manufacturer specific. Contractor selected equipment shall meet the given constraints and long lead equipment will be coordinated based on final equipment selection.
  - E. All service penetrations through fire, acoustic, thermal, air and watertight compartments shall be sealed to achieve performance rating equivalent to the compartment and shall be designed to accommodate movement.
  - F. All services penetrations through fire rated compartments shall be fire stopped to achieve a rating equivalent to the compartment and shall be designed to accommodate thermal movement.
  - G. All services crossing the movement joints shall be installed to accommodate the movements as defined in the Structural Engineers Contract documentation.
  - H. The Contractor will produce fully coordinated installation drawings prior to installation for approval.
  - I. The Contractor will produce as built drawings prior to handover for approval.
- Notes:

Issue	Date	Description
1	09/03/2021	DRAFT SSQA
2	14/03/2021	DRAFT SSQA - WIP
3	19/03/2021	SSQA ISSUE

**ARUP**  
Arup, Level 5 Barrack Place, 151 Clarence St  
Sydney, NSW, 2000  
Tel +61(02)9320 9320  
www.arup.com

**GREENBOX**  
+61 2 8009 8930  
LEVEL 25  
25 BULGH ST  
SYDNEY NSW 2000 AUSTRALIA  
GREENBOX ARCHITECTURE PTY LTD  
ABN: 79 139 779 058  
ISO 9001 CERTIFIED QUALITY SYSTEM

Client:  
PROPONENT

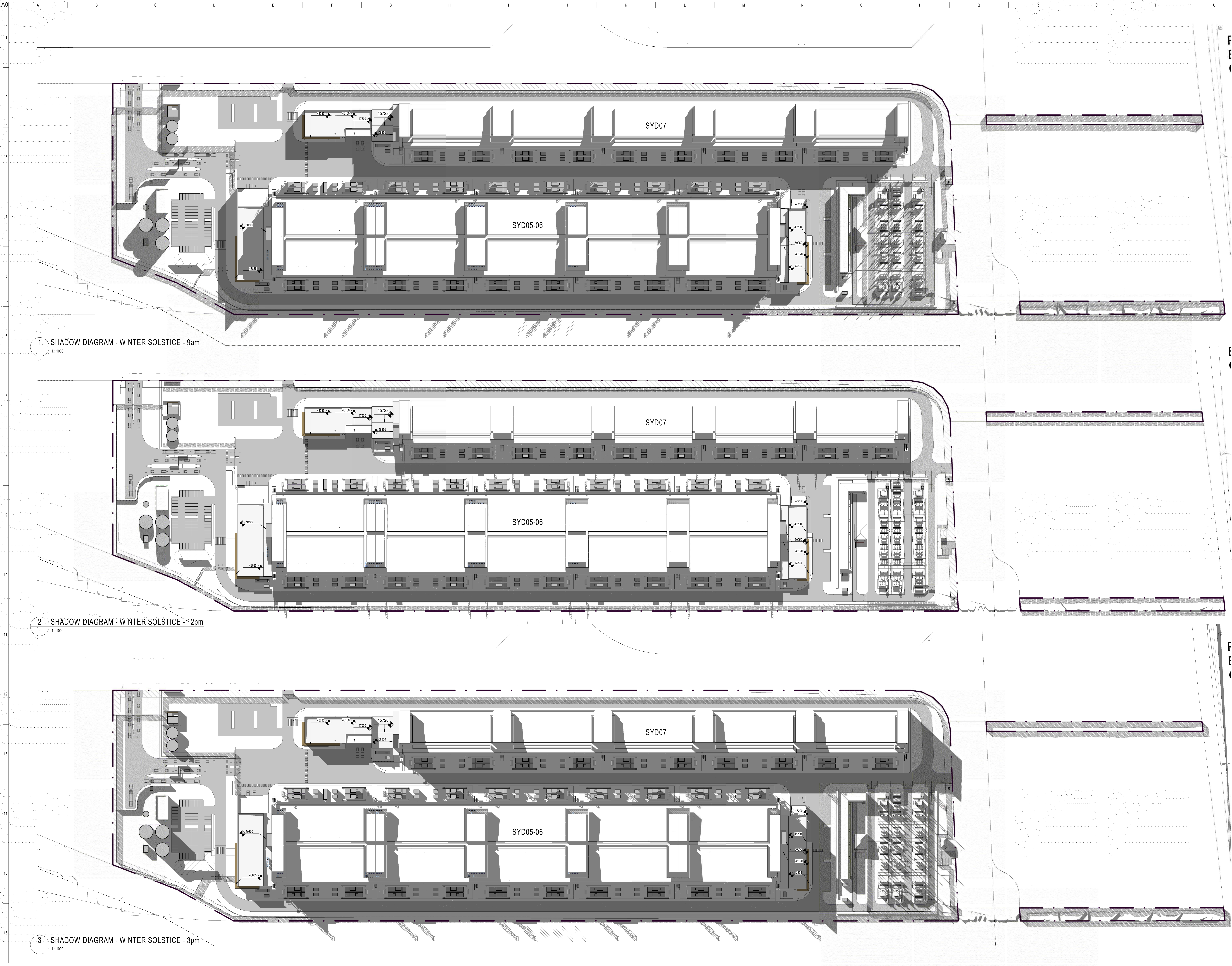
Project Title:  
SYD05-06-07  
KEMPS CREEK

Key Plan

Drawing Title: LEVEL 2 AND ROOF PLANS	
Scale at A3: 1 : 1000	Drawn By: AH_JN_AG
Role: Architecture	Checked By: MP
Subsidiary: A3	Approved By: AO
Job No: 200036	Rev: 3
Sheet number: SYD05-06-07_A-0-2092	

Scale bar:  
1:1000 0 10 20 30 50m





Approvals

Customer

Date

General Notes:

A.

This is not an installation drawing and shows design intent information only.

B.

All dimensions are in millimeters (mm) unless noted otherwise. All levels are in metres (m) unless stated otherwise.

C.

Do not scale work to figures dimensions only. This drawing shall be read in conjunction with building services documents and other relevant contract documents.

D.

Equipment and plant details are not manufacturer specific. Contractor selected equipment shall meet the given constraints and long lead equipment will be coordinated based on final equipment selection.

E.

All service penetrations through fire, acoustic, thermal, air and watertight compartments shall be sealed to achieve performance rating equivalent to the compartment and shall be designed to accommodate movement.

F.

All services penetrations through fire rated compartments shall be fire stopped to achieve a rating equivalent to the compartment and shall be designed to accommodate thermal movement.

G.

All services crossing the movement joints shall be installed to accommodate the movements as defined in the Structural Engineers Contract documentation.

H.

The Contractor will produce fully coordinated installation drawings prior to installation for approval.

I.

The Contractor will produce as built drawings prior to handover for approval.

Notes:

Issue

Date

Description

1

19/03/2021

DRAFT SDCA - WIP

2

19/03/2021

SDCA ISSUE

ARUP

Arup, Level 5 Barrack Place, 151 Clarence St  
Sydney NSW, 2000  
Tel +61(02)9320 9320  
www.arup.com

GREENBOX

+61 2 8089 8930  
LEVEL 25  
25 BLIGH ST  
SYDNEY NSW 2000 AUSTRALIA  
GREENBOX ARCHITECTURE PTY LTD  
ABN: 79 139 779 098  
ISO 9001 CERTIFIED QUALITY SYSTEM

Client

PROPOSER

Project Title

SYD05-06-07  
KEMPS CREEK

Key Plan

Drawing Title

SHADOW DIAGRAMS

Scale at A3

1:1000

Drawn By

AH\_JN\_AG

Role

Architecture

Checked By

MP

Subsidiary

A3

Approved By

AD

Job No

200036

Rev

2

Sheet number

SYD05-06-07\_A-8-0098

Scale bar

1:2000

0

20

40

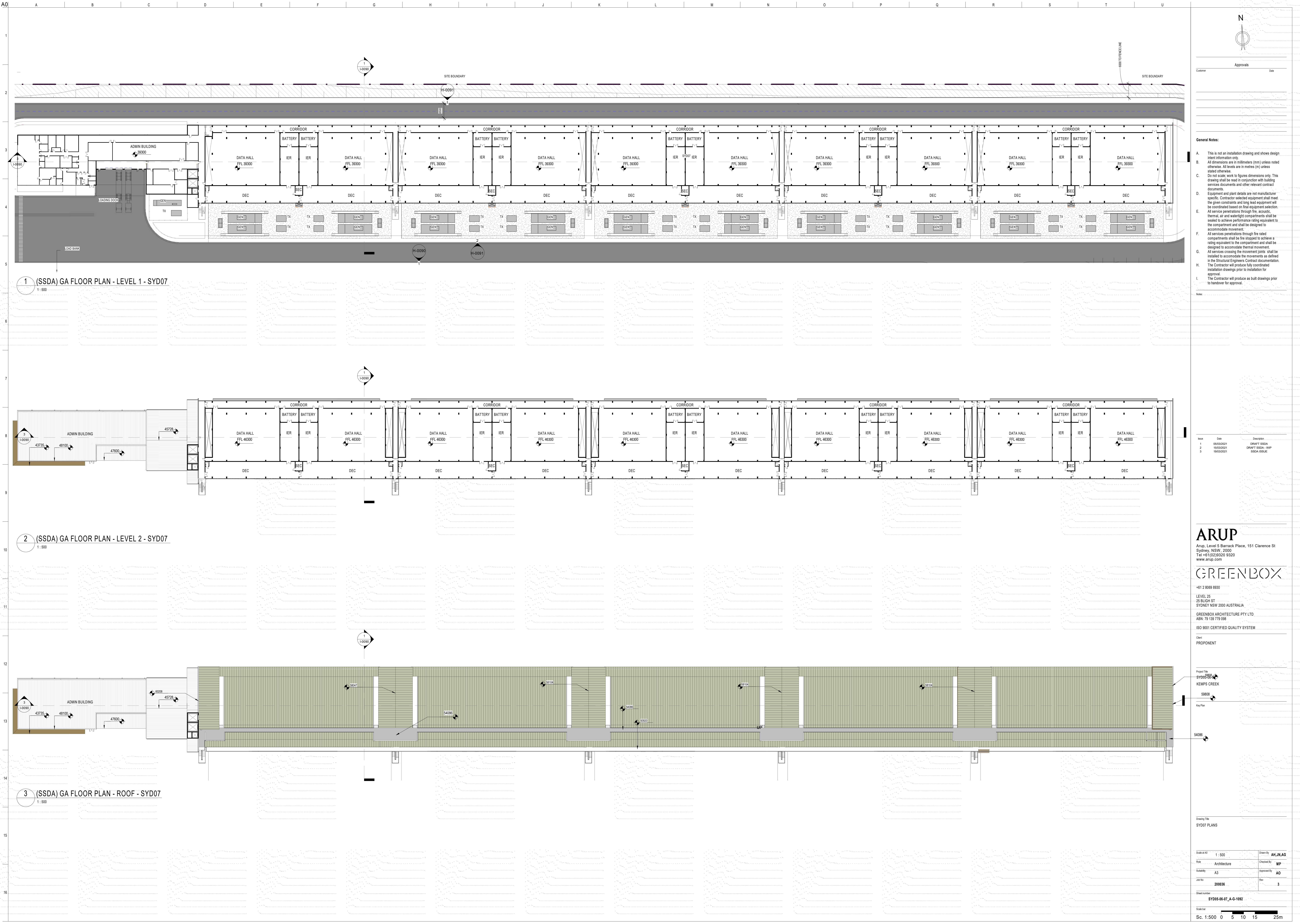
60

100m









1 (SSDA) GA FLOOR PLAN - LEVEL 1 - SYD07  
1: 500

2 (SSDA) GA FLOOR PLAN - LEVEL 2 - SYD07  
1: 500

3 (SSDA) GA FLOOR PLAN - ROOF - SYD07  
1: 500

- General Notes:**
- A. This is not an installation drawing and shows design intent information only.
  - B. All dimensions are in millimeters (mm) unless noted otherwise. All levels are in metres (m) unless stated otherwise.
  - C. Do not scale work to figures dimensions only. This drawing shall be read in conjunction with building services documents and other relevant contract documents.
  - D. Equipment and plant details are not manufacturer specific. Contractor selected equipment shall meet the given constraints and long lead equipment will be coordinated based on final equipment selection.
  - E. All service penetrations through fire, acoustic thermal, air and watertight compartments shall be sealed to achieve performance rating equivalent to the compartment and shall be designed to accommodate movement.
  - F. All services penetrations through fire rated compartments shall be fire stopped to achieve a rating equivalent to the compartment and shall be designed to accommodate thermal movement.
  - G. All services crossing the movement joints shall be installed to accommodate the movements as defined in the Structural Engineers Contract documentation.
  - H. The Contractor will produce fully coordinated installation drawings prior to installation for approval.
  - I. The Contractor will produce as built drawings prior to handover for approval.
- Notes:**

Issue	Date	Description
1	09/03/2021	DRAFT E-SSDA
2	14/03/2021	DRAFT SSDA - WIP
3	19/03/2021	SSDA ISSUE

**ARUP**  
Arup, Level 5 Barrack Place, 151 Clarence St  
Sydney NSW, 2000  
Tel +61(02)9320 9320  
www.arup.com

**GREENBOX**  
+61 2 8009 8930  
LEVEL 25  
25 BLIGH ST  
SYDNEY NSW 2000 AUSTRALIA  
GREENBOX ARCHITECTURE PTY LTD  
ABN: 79 139 779 058  
ISO 9001 CERTIFIED QUALITY SYSTEM

Client:  
PROPOSER

Project Title:  
SYD07-SSDA  
KEMPS CREEK  
59808  
Key Plan

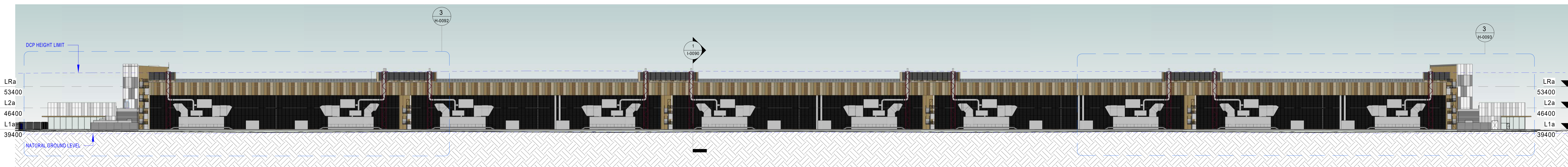
Drawing Title: SYD07 PLANS	
Scale at A3: 1: 500	Drawn By: AH_JN_AG
Role: Architecture	Checked By: MP
Subsidiary: A3	Approved By: AD
Job No: 200036	Rev: 3
Sheet number: SYD05-06-07_A-G-1092	

Scale bar:  
Sc. 1:500 0 5 10 15 25m

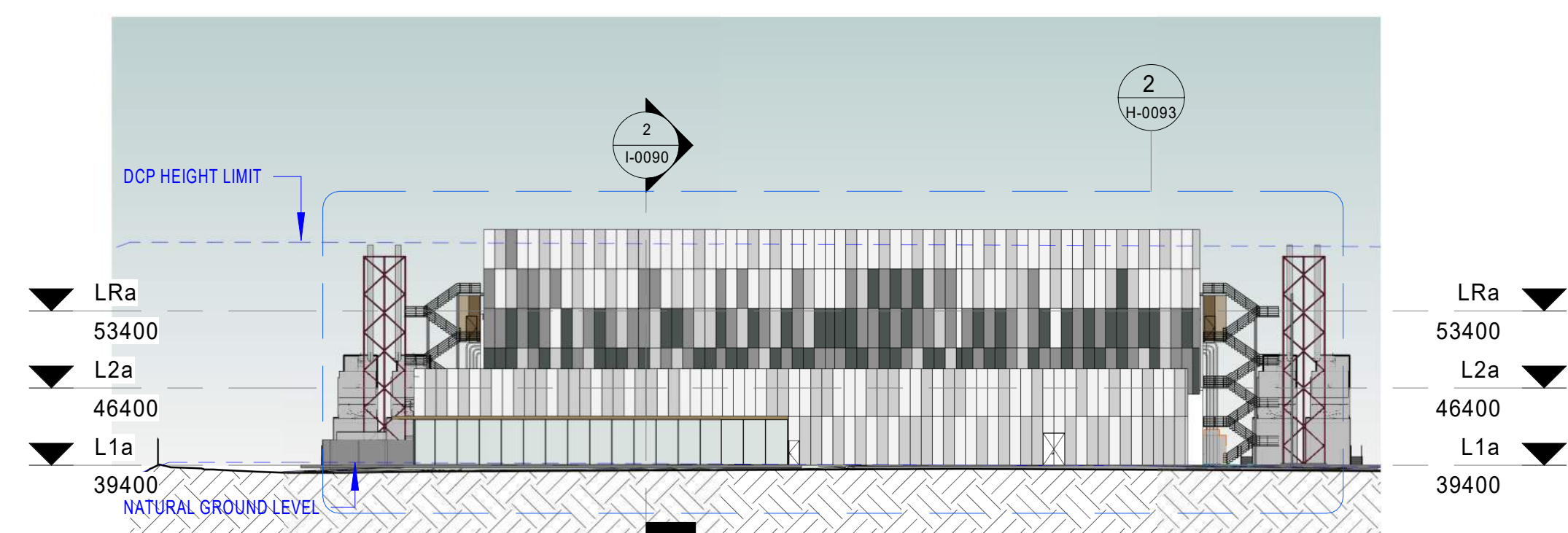




1 SYD05-06 NORTH ELEVATION  
1:500



2 SYD05-06 SOUTH ELEVATION  
1:500



3 SYD05-06 EAST ELEVATION  
1:500



4 SYD05-06 WEST ELEVATION  
1:500

Approvals	
Customer	Date

#### General Notes:

- This is not an installation drawing and shows design intent information only.
- All dimensions are in millimeters (mm) unless noted otherwise. All levels are in metres (m) unless stated otherwise.
- Do not scale work to figures dimensions only. This drawing shall be read in conjunction with building services documents and other relevant contract documents.
- Equipment and plant details are not manufacturer specific. Contractor selected equipment shall meet the given constraints and long lead equipment will be coordinated based on final equipment selection.
- All service penetrations through fire, acoustic, thermal, air and watertight compartments shall be sealed to achieve performance rating equivalent to the compartment and shall be designed to accommodate movement.
- All services penetrating through fire rated compartments shall be fire stopped to achieve a rating equivalent to the compartment and shall be designed to accommodate thermal movement.
- All services crossing the movement joints shall be installed to accommodate the movements as defined in the Structural Engineers Contract documentation.
- The Contractor will produce fully coordinated installation drawings prior to installation for approval.
- The Contractor will produce as built drawings prior to handover for approval.

#### Notes:

Issue	Date	Description
1	20/03/2021	DRAFT SSSA
2	14/03/2021	DRAFT SSSA - WIP
3	19/03/2021	SSSA ISSUE

## ARUP

Arup, Level 5 Barrack Place, 151 Clarence St  
Sydney, NSW, 2000  
Tel +61(02)9320 9320  
www.arup.com

## GREENBOX

+61 2 8089 8830

LEVEL 25  
25 BLIGH ST  
SYDNEY NSW 2000 AUSTRALIA

GREENBOX ARCHITECTURE PTY LTD  
ABN: 79 139 779 068

ISO 9001 CERTIFIED QUALITY SYSTEM

Client

PROPOSER

Project Title

SYD05-06-07

KEMPS CREEK

Key Plan

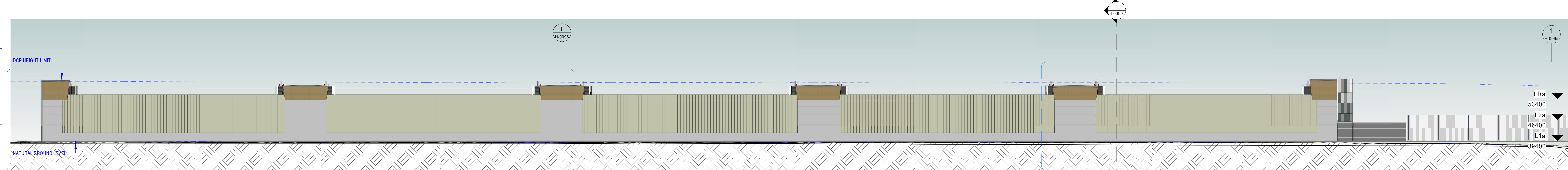
Drawing Title  
ELEVATIONS - SYD05-06

Scale at A3	1:500	Drawn By	AH_JN_AG
Role	Architecture	Checked By	MP
Subsidiary	A3	Approved By	AD
Job No	200036	Rev	3

Sheet number  
SYD05-06-07\_A-H-0090

Scale bar  
Sc. 1:500 0 5 10 15 25m

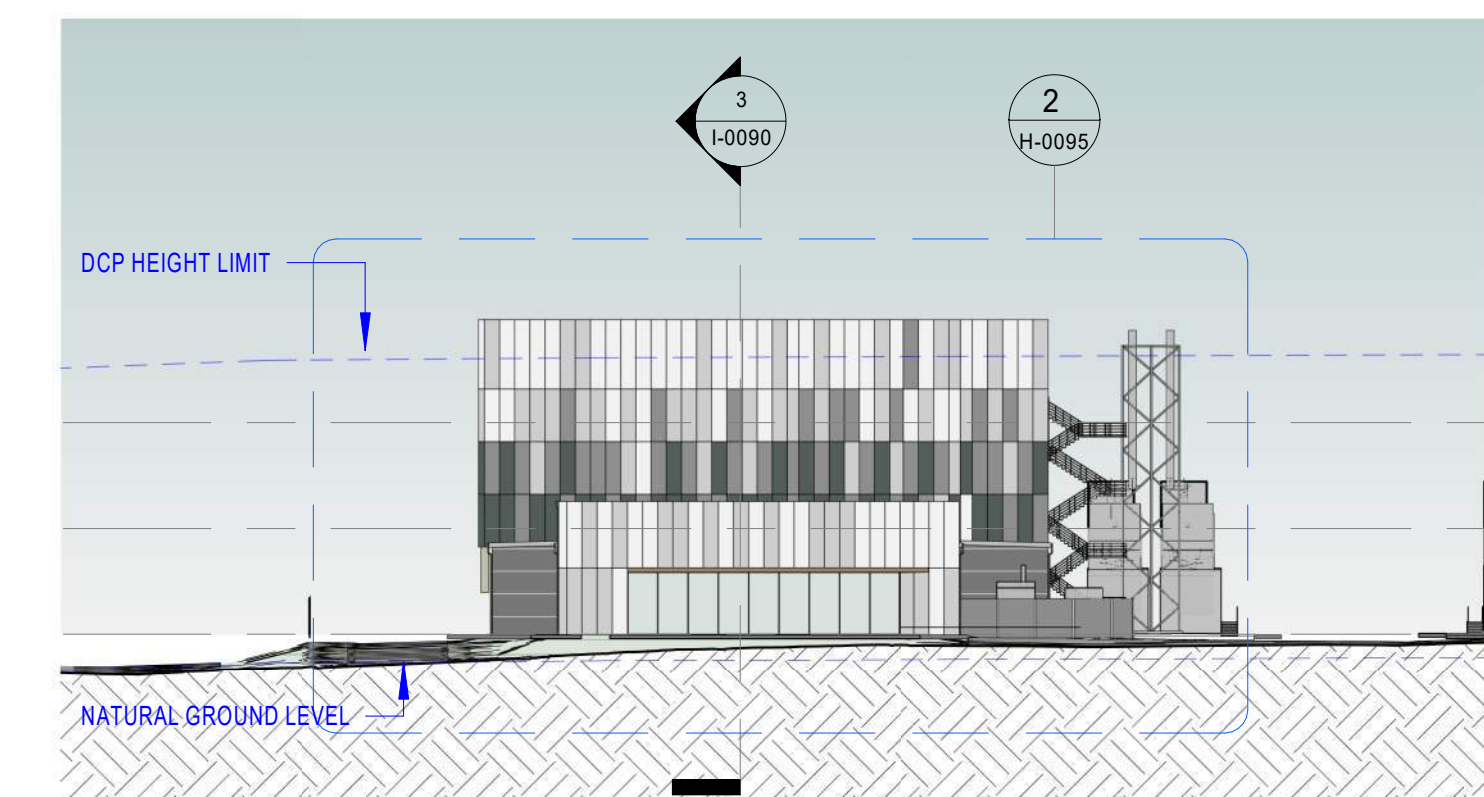




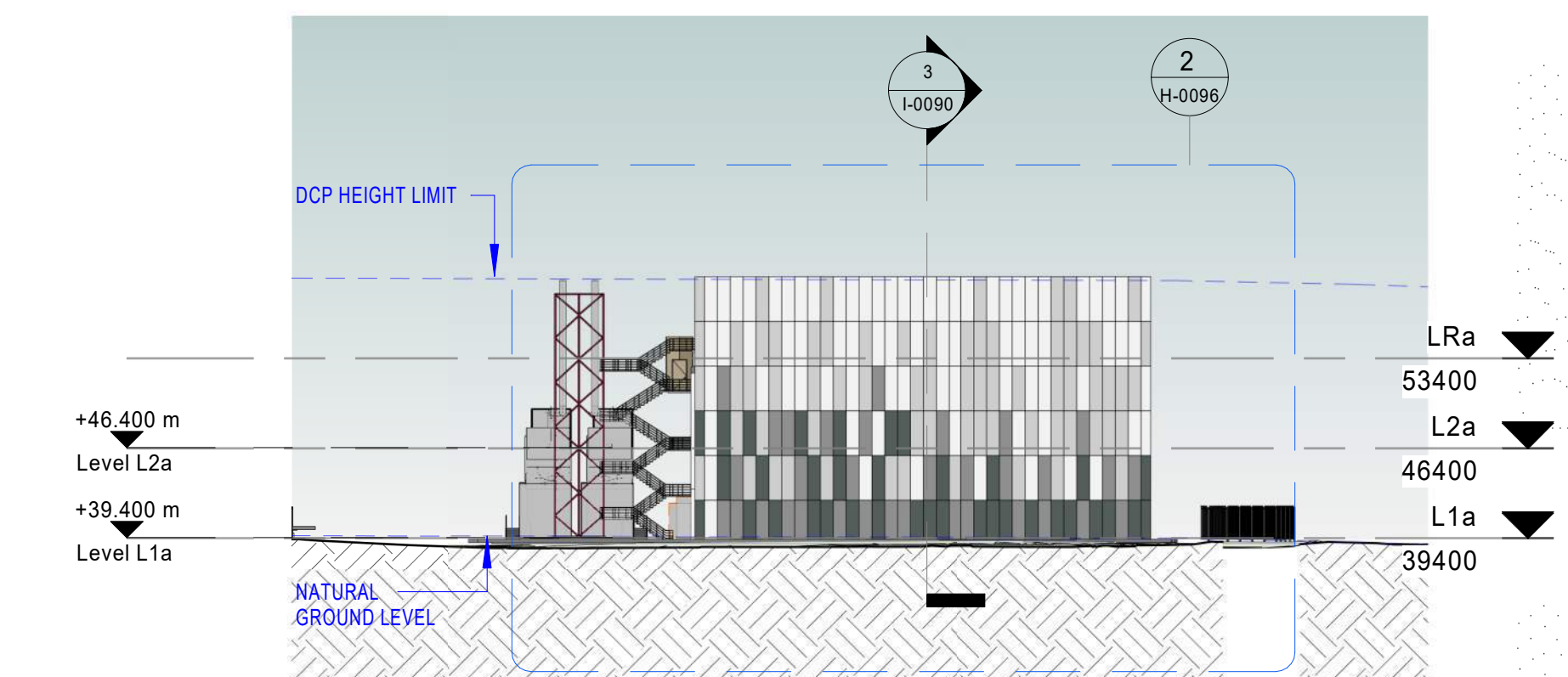
1 SYD07 NORTH ELEVATION  
1:500



2 SYD07 SOUTH ELEVATION  
1:500



3 SYD07 WEST ELEVATION  
1:500



4 SYD07 EAST ELEVATION  
1:500

[illegible]

**General Notes:**

A. This is not an information drawing and shows design intent only.

B. All dimensions are in millimeters (mm) unless noted otherwise. All levels are in meters (m) unless otherwise noted.

C. Do not scale, work to figures dimensions only. This drawing shall be used in conjunction with building system documents and other relevant contract documents.

D. Equipment and plant details are to manufacturer specific. Contractor selected equipment shall meet or exceed the minimum and load capacity shall be coordinated based on final equipment selection.

E. At service penetrations through the acoustic ceiling, the ceiling shall be installed and sealed to achieve performance rating equivalent to the ceiling and shall not be modified to accommodate movement.

F. At service penetrations through the rated compartments shall be fire stopped to achieve a rating equivalent to the compartment and shall be tested to accommodate thermal movement.

G. All services crossing the movement joints shall be installed in accordance with the details defined in the Structural Engineers Contract documentation.

H. The contractor will produce the final installation drawings prior to installation for approval.

I. The contractor will produce a bid drawings prior to handover for approval.

**ARUP**  
Arup, Level 5 Barrack Place, 51 Clarence St  
Sydney, NSW, 2000  
Tel +61 (0)2 9238 9320  
[www.arup.com](http://www.arup.com)

**GREENBOX**

+61 2 8069 8930  
LEVEL 25  
25 BLIGH ST  
SYDNEY NSW 2000 AUSTRALIA

**GREENBOX ARCHITECTURE PTY LTD**  
ABN: 79 139 779 098

ISO 9001 CERTIFIED QUALITY SYSTEM

Drawn  
**PROMOFON**

---

Project No:  
SYD05-06-07  
**KEMPS CREEK**

Key Plan			
<p>Drawing Title</p> <p>ELEVATIONS - SYD07</p>			
Scale (x/ft)		Drawn By	
1 : 500		AH, JN, AG	
Role	Architecture	Checked By	NP
Security	A3	Approved By	AO
Job No	200038	Rev	3

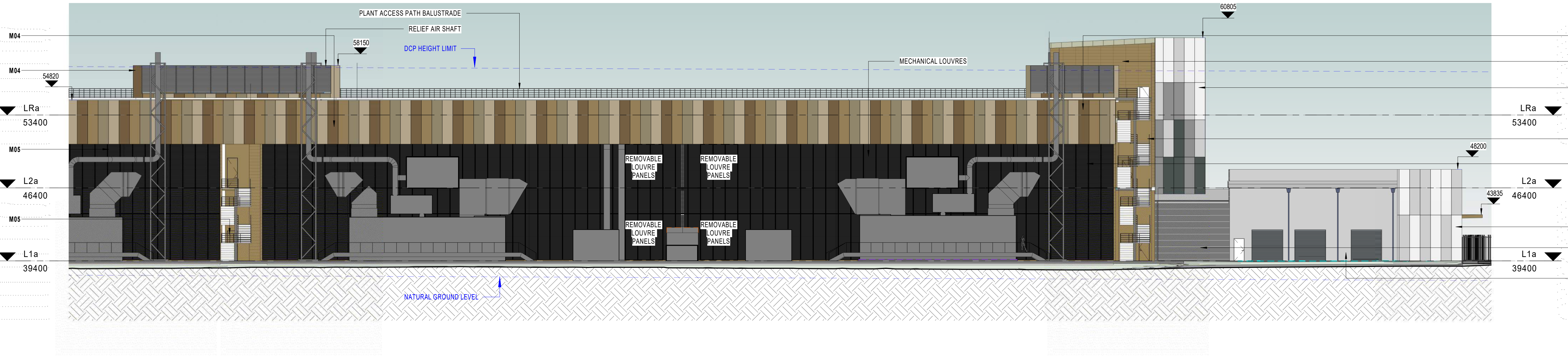
Sheet number  
SYD05-06-07\_A-H-0091

Scale bar  
Sc. 1:500 0 5 10 15 25m



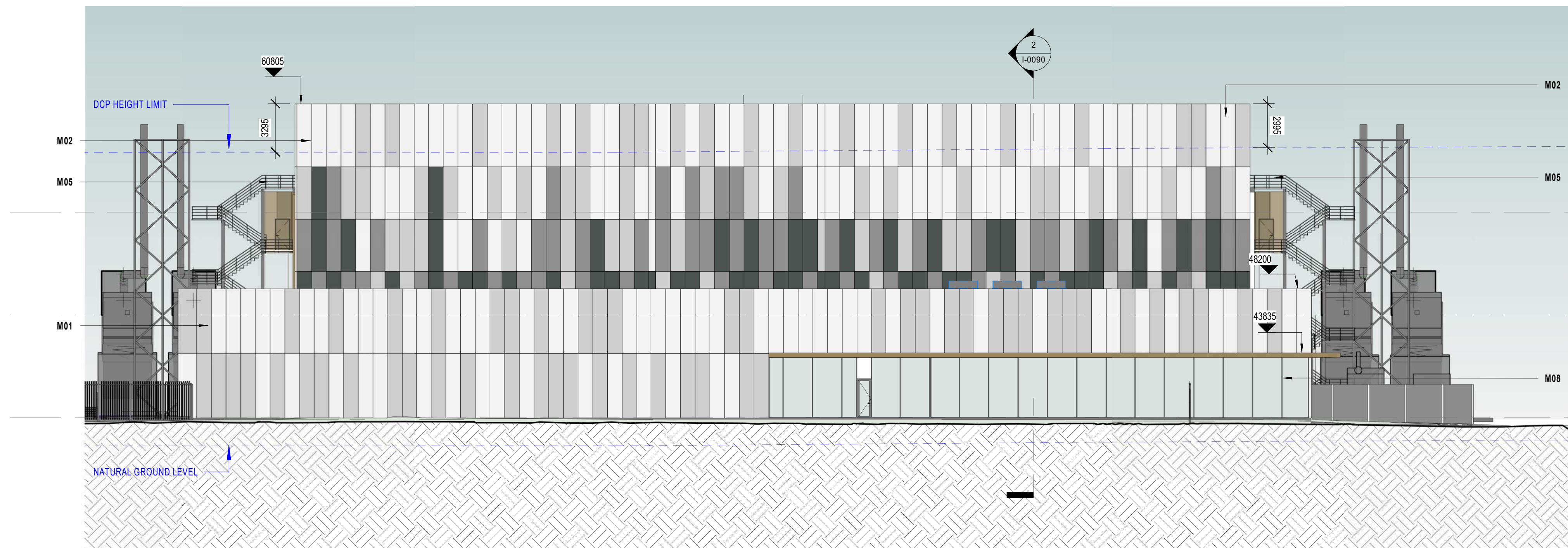
1 SYD05-06 ENLARGED ELEVATION 1

1:200



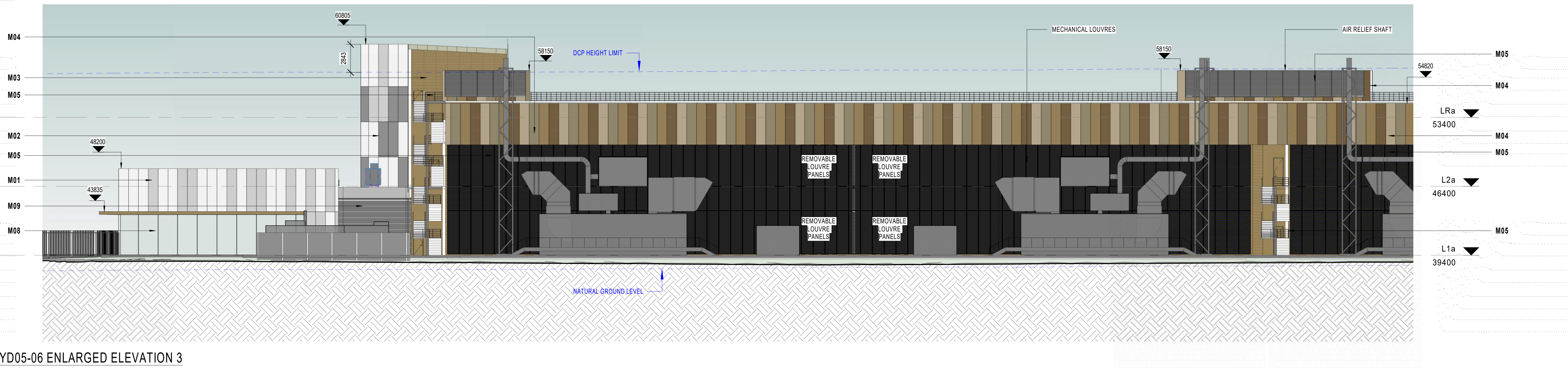
2 SYD05-06 ENLARGED ELEVATION 2

1:200



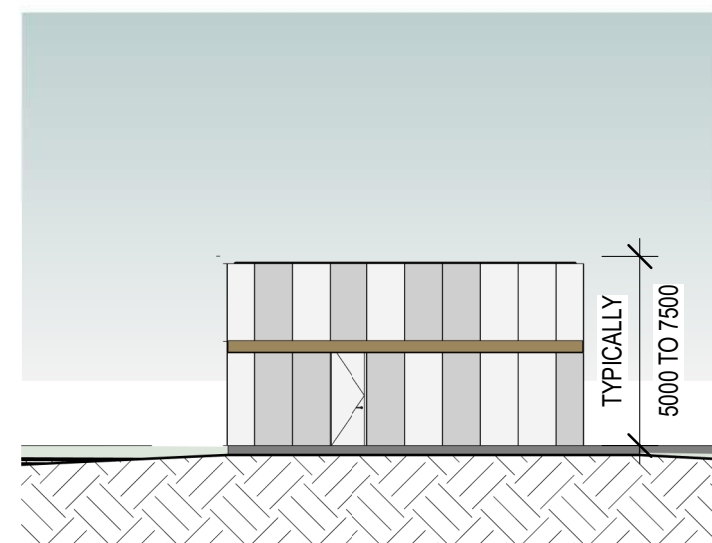
3 SYD05-06 ENLARGED ELEVATION 3

1:200

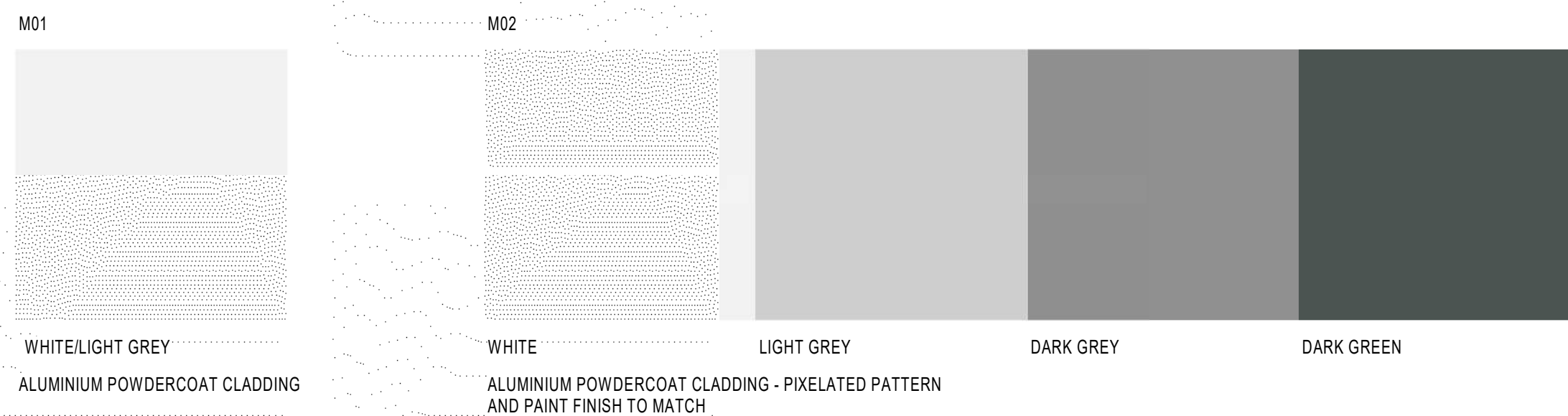


4 TYPICAL EXTERNAL PLANT/ FIRE CONTROL CENTRE ELEVATIONS

1:200



FINISHES LEGEND



Approvals	
Customer	Date
General Notes:	
A. This is not an installation drawing and shows design intent information only.	
B. All dimensions are in millimeters (mm) unless noted otherwise. All levels are in metres (m) unless stated otherwise.	
C. Do not scale work to figures dimensions only. This drawing shall be read in conjunction with building services documents and other relevant contract documents.	
D. Equipment and plant details are not manufacturer specific. Contractor selected equipment shall meet the given constraints and long lead equipment will be coordinated based on final equipment selection.	
E. All service penetrations through fire, acoustic, thermal, air and watertight compartments shall be sealed to achieve performance rating equivalent to the compartment and shall be designed to accommodate movement.	
F. All services penetrations through fire rated compartments shall be fire stopped to achieve a rating equivalent to the compartment and shall be designed to accommodate thermal movement.	
G. All services crossing the movement joints shall be installed to accommodate the movements as defined in the Structural Engineers Contract documentation.	
H. The Contractor will produce fully coordinated installation drawings prior to installation for approval.	
I. The Contractor will produce as built drawings prior to handover for approval.	
Notes:	

Issue	Date	Description
1	09/03/2021	DRAFT SSQA
2	14/03/2021	DRAFT SSQA - WIP
3	19/03/2021	SSQA ISSUE

**ARUP**  
Arup, Level 5 Barrack Place, 151 Clarence St  
Sydney, NSW, 2000  
Tel +61 (02) 9320 9320  
www.arup.com

**GREENBOX**  
+61 2 8089 8930  
LEVEL 25  
25 BLIGH ST  
SYDNEY NSW 2000 AUSTRALIA  
GREENBOX ARCHITECTURE PTY LTD  
ABN: 79 139 779 058  
ISO 9001 CERTIFIED QUALITY SYSTEM

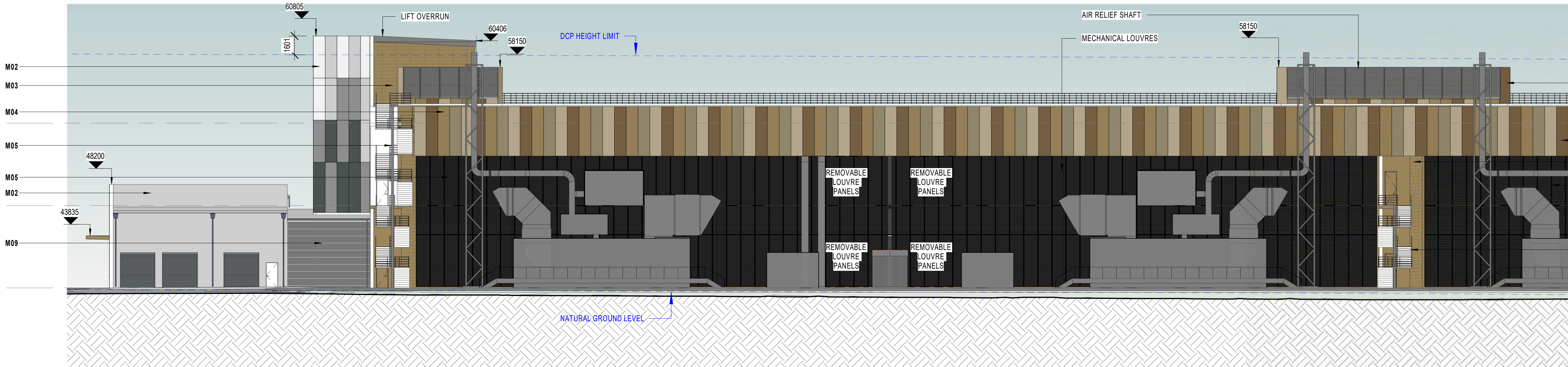
Client  
PROPOSER

Project Title  
SYD05-06-07  
KEMPS CREEK

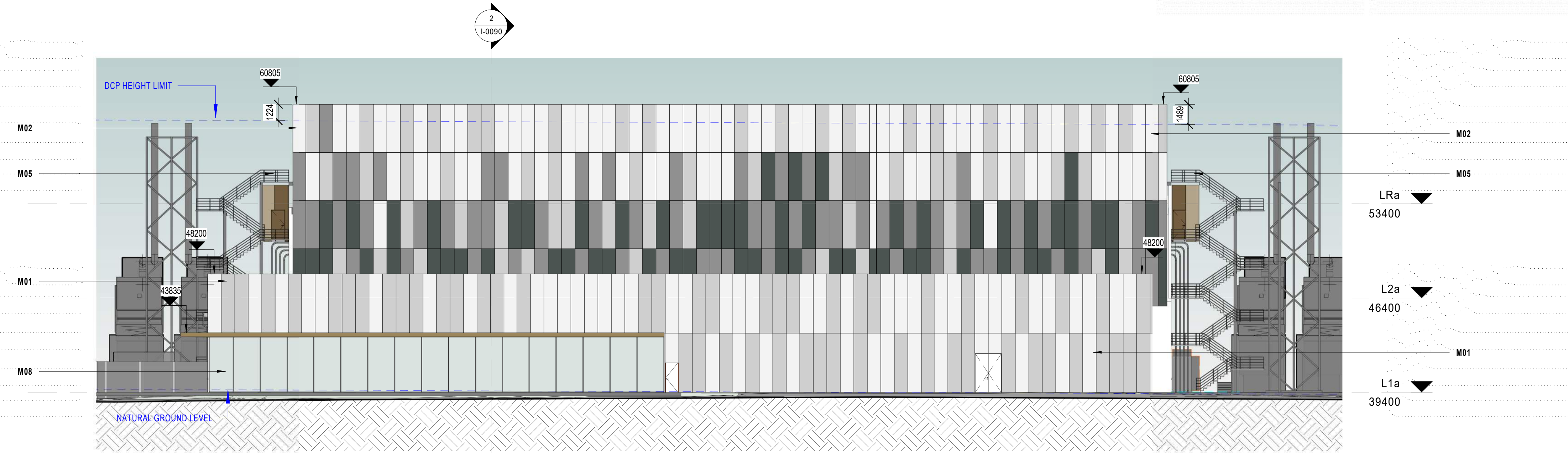
Key Plan

Drawing Title ELEVATIONS - SYD05-06 - ENLARGED ELEVATIONS	
Scale at A0 As indicated	Drawn By AH_JN_AG
Role Architecture	Checked By MP
Stability A3	Approved By AO
Job No 200036	Rev 3
Sheet number SYD05-06-07_A-H-0092	
Scale bar Sc: 1:100 0 1 2 3 5m	





1 SYD05-06 ENLARGED ELEVATION 4  
1: 200



2 SYD05-06 ENLARGED ELEVATION 5  
1: 200



3 SYD05-06 ENLARGED ELEVATION 6  
1: 200

FINISHES LEGEND



Approvals	
Customer	Date

- General Notes:
- A. This is not an installation drawing and shows design intent information only.
  - B. All dimensions are in millimeters (mm) unless noted otherwise. All levels are in metres (m) unless stated otherwise.
  - C. Do not scale work to figures dimensions only. This drawing shall be read in conjunction with building services documents and other relevant contract documents.
  - D. Equipment and plant details are not manufacturer specific. Contractor selected equipment shall meet the given constraints and long lead equipment will be coordinated based on final equipment selection.
  - E. All service penetrations through fire, acoustic, thermal, air and watertight compartments shall be sealed to achieve performance rating equivalent to the compartment and shall be designed to accommodate movement.
  - F. All services penetrations through fire rated compartments shall be fire stopped to achieve a rating equivalent to the compartment and shall be designed to accommodate thermal movement.
  - G. All services crossing the movement joints shall be installed to accommodate the movements as defined in the Structural Engineers Contract documentation.
  - H. The Contractor will produce fully coordinated installation drawings prior to installation for approval.
  - I. The Contractor will produce as built drawings prior to handover for approval.

Revisions		
No.	Date	Description
1	09/03/2021	DRAFT SSQA
2	16/03/2021	DRAFT SSQA - WIP
3	19/03/2021	SSQA ISSUE

**ARUP**  
Arup, Level 5 Barrack Place, 151 Clarence St  
Sydney, NSW, 2000  
Tel +61(02)9320 9320  
www.arup.com

**GREENBOX**  
+61 2 8009 8930  
LEVEL 25  
25 BLIGH ST  
SYDNEY NSW 2000 AUSTRALIA  
GREENBOX ARCHITECTURE PTY LTD  
ABN: 79 139 779 058  
ISO 9001 CERTIFIED QUALITY SYSTEM

Client  
PROPNENT

Project Title  
SYD05-06-07  
KEMPS CREEK

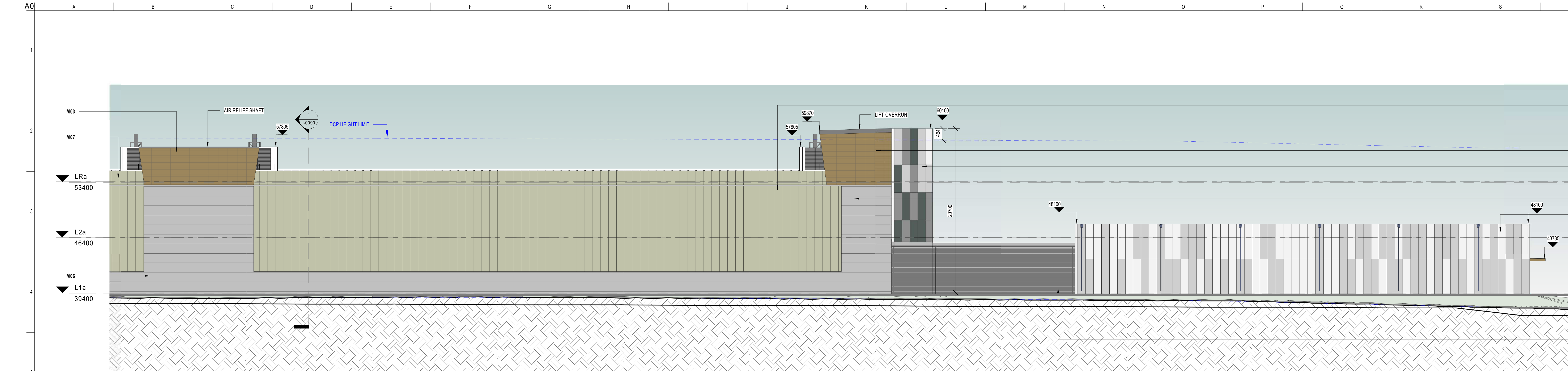
Key Plan

Drawing Title  
ELEVATIONS - SYD05-06 - ENLARGED ELEVATIONS

Scale at A0	As indicated	Drawn By	AH_JN_AG
Role	Architecture	Checked By	MP
Stability	A3	Approved By	AO
Job No	200036	Rev	3

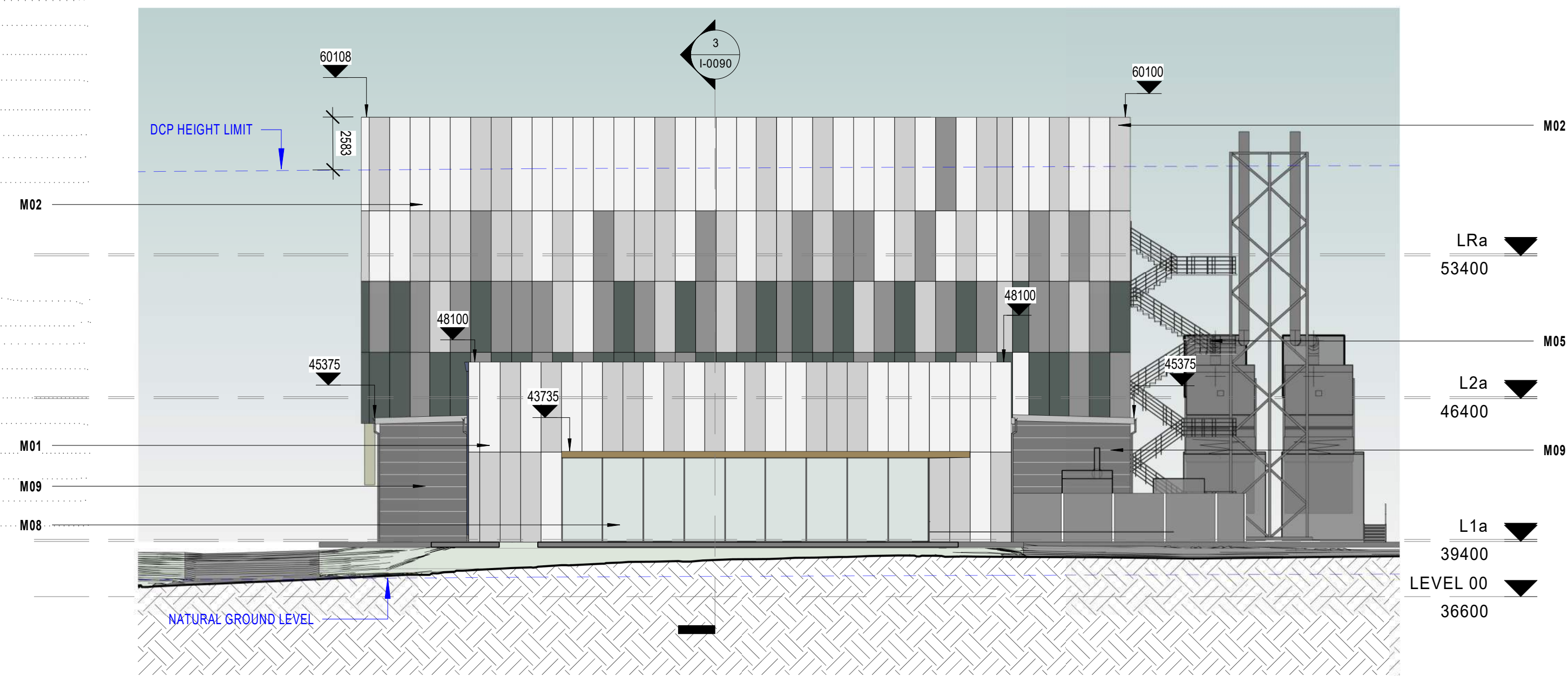
Sheet number  
SYD05-06-07\_A-H-0093  
Scale bar  
Sc: 1:100 0 1 2 3 5m





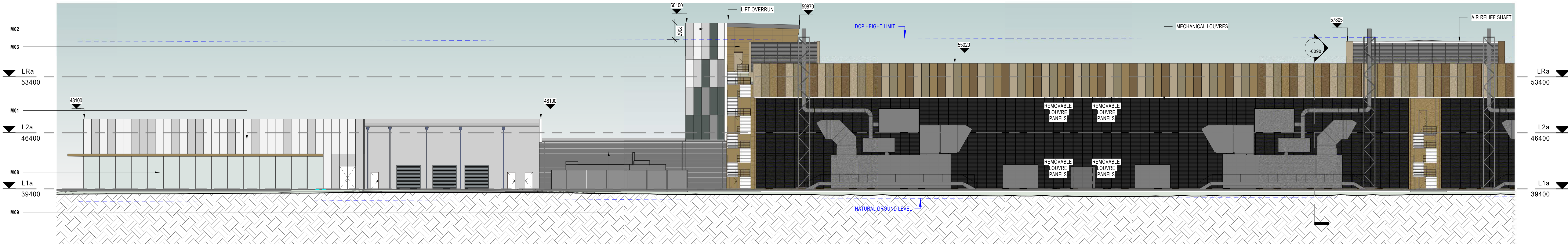
SYD07 ENLARGED ELEVATION 1

1:200



SYD07 ENLARGED ELEVATION 2

1:200



SYD07 ENLARGED ELEVATION 3

1:200

FINISHES LEGEND



Approvals	
Customer	Date
General Notes:	
A. This is not an installation drawing and shows design intent information only.	
B. All dimensions are in millimeters (mm) unless noted otherwise. All levels are in metres (m) unless stated otherwise.	
C. Do not scale work to figures dimensions only. This drawing shall be read in conjunction with building services documents and other relevant contract documents.	
D. Equipment and plant details are not manufacturer specific. Contractor selected equipment shall meet the given constraints and long lead equipment will be coordinated based on final equipment selection.	
E. All service penetrations through fire, acoustic, thermal, air and watertight compartments shall be sealed to achieve performance rating equivalent to the compartment and shall be designed to accommodate movement.	
F. All services penetrations through fire rated compartments shall be fire stopped to achieve a rating equivalent to the compartment and shall be designed to accommodate thermal movement.	
G. All services crossing the movement joints shall be installed to accommodate the movements as defined in the Structural Engineers Contract documentation.	
H. The Contractor will produce fully coordinated installation drawings prior to installation for approval.	
I. The Contractor will produce as built drawings prior to handover for approval.	
Notes:	

Issue	Date	Description
1	09/03/2021	DRAFT SSQA
2	16/03/2021	DRAFT SSQA - WIP
3	19/03/2021	SSQA ISSUE

**ARUP**  
Arup, Level 5 Barrack Place, 151 Clarence St  
Sydney, NSW, 2000  
Tel +61(02)9320 9320  
www.arup.com

**GREENBOX**  
+61 2 8089 8930  
LEVEL 25  
25 BLIGH ST  
SYDNEY NSW 2000 AUSTRALIA  
GREENBOX ARCHITECTURE PTY LTD  
ABN: 79 139 779 088  
ISO 9001 CERTIFIED QUALITY SYSTEM

Client:  
PROPONENT

Project Title:  
SYD05-06-07  
KEMPS CREEK

Key Plan

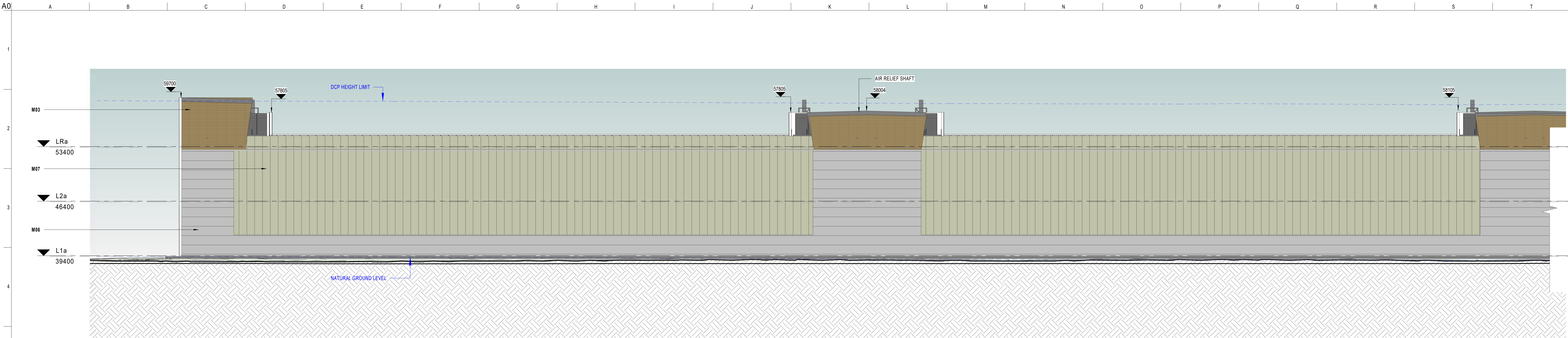
Drawing Title:  
ELEVATIONS - SYD07 - ENLARGED ELEVATIONS

Scale at A0	As indicated	Drawn By	AH_JN_AG
Role	Architecture	Checked By	MP
Stability	A3	Approved By	AO
Job No	200036	Rev	3

Sheet number:  
SYD05-06-07\_A-H-0095

Scale bar:  
Sc: 1:100 0 1 2 3 5m

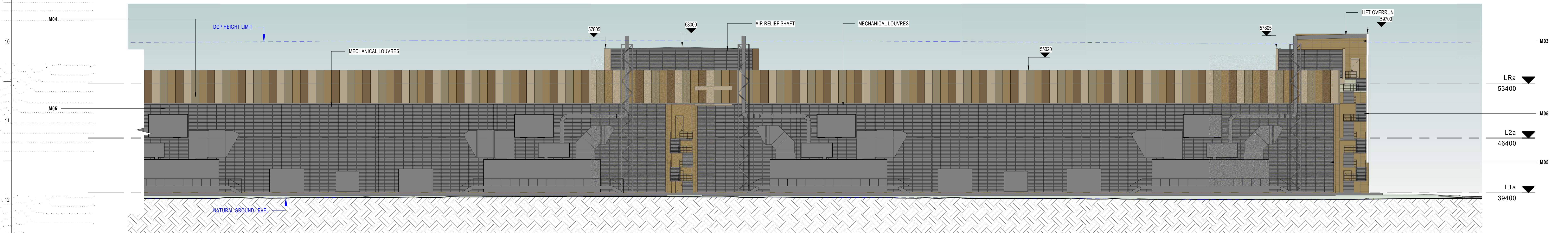




1 SYD07 ENLARGED ELEVATION 4  
1:200

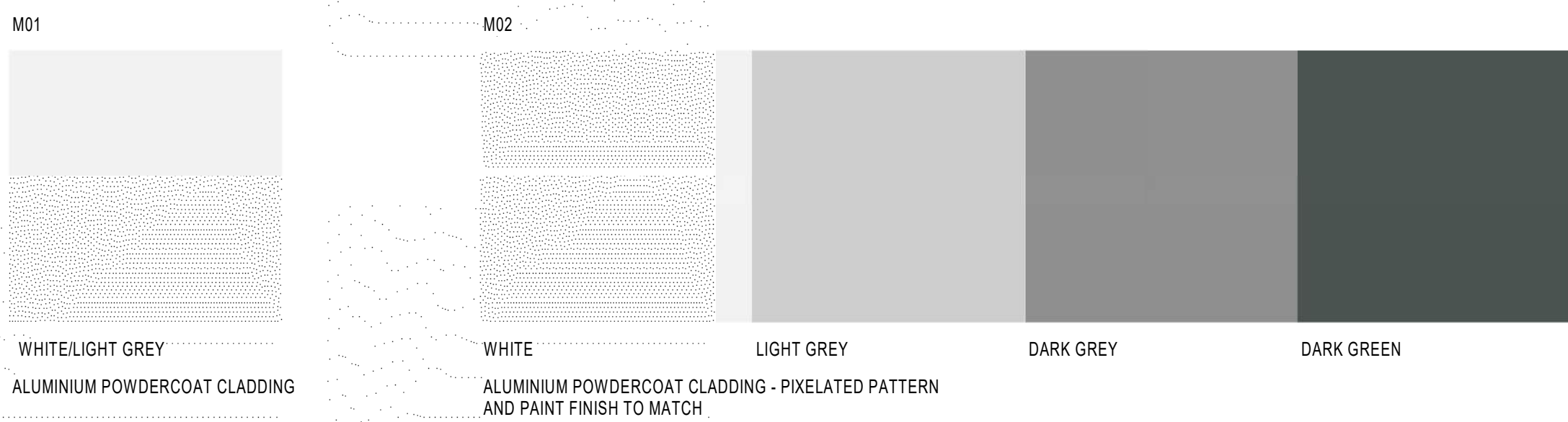


2 SYD07 ENLARGED ELEVATION 5  
1:200



3 SYD07 ENLARGED ELEVATION 6  
1:200

FINISHES LEGEND



Approvals		
Customer		Date

- General Notes:
- This is not an installation drawing and shows design intent information only.
  - All dimensions are in millimeters (mm) unless noted otherwise. All levels are in metres (m) unless stated otherwise.
  - Do not scale work to figures dimensions only. This drawing shall be read in conjunction with building services documents and other relevant contract documents.
  - Equipment and plant details are not manufacturer specific. Contractor selected equipment shall meet the given constraints and long lead equipment will be coordinated based on final equipment selection.
  - All service penetrations through fire, acoustic, thermal, air and watertight compartments shall be sealed to achieve performance rating equivalent to the compartment and shall be designed to accommodate movement.
  - All services penetrations through fire rated compartments shall be fire stopped to achieve a rating equivalent to the compartment and shall be designed to accommodate thermal movement.
  - All services crossing the movement joints shall be installed to accommodate the movements as defined in the Structural Engineers Contract documentation.
  - The Contractor will produce fully coordinated installation drawings prior to installation for approval.
  - The Contractor will produce as built drawings prior to handover for approval.

No.	Date	Description
1	09/03/2021	DRAFT SSQA
2	14/03/2021	DRAFT SSQA - WIP
3	19/03/2021	SSQA ISSUE

**ARUP**  
Arup, Level 5 Barrack Place, 151 Clarence St  
Sydney, NSW, 2000  
Tel +61(02)9320 9320  
www.arup.com

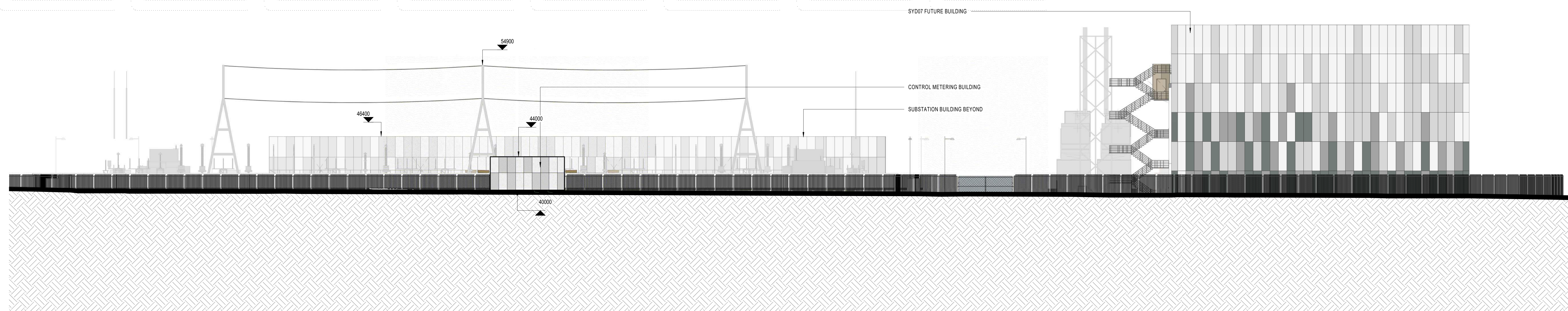
**GREENBOX**  
+61 2 8089 8830  
LEVEL 25  
25 BLEGH ST  
SYDNEY NSW 2000 AUSTRALIA  
GREENBOX ARCHITECTURE PTY LTD  
ABN: 79 139 779 058  
ISO 9001 CERTIFIED QUALITY SYSTEM

Client  
PROPONENT  
Project Title  
SYD05-06-07  
KEMPS CREEK

Key Plan

Drawing Title ELEVATIONS - SYD07 - ENLARGED ELEVATIONS			
Scale at A3	As indicated	Drawn By	AH_JN_AG
Role	Architecture	Checked By	MP
Stability	A3	Approved By	AD
Job No	200036	Rev	3
Sheet number SYD05-06-07_A-H-0096			
Scale bar Sc: 1:100 0 1 2 3 5m			



[illegible]

**General Notes:**

- |    |   |
|----|---|
| A. | This is not an installation drawing and shows design intent information only.   |
| B. | All dimensions are in millimeters (mm) unless noted otherwise. All levels are in meters (m) unless stated otherwise.  |
| C. | Do not scale; work to figures dimensions only. This drawing shall be read in conjunction with building services documents and other relevant contract documents.  |
| D. | Equipment and plant details are not manufacturer specific. Contractor selected equipment shall meet minimum constraints and long lead equipment will be coordinated based on final equipment selection. |
| E. | All service penetrations through fire, acoustic, and/or airtight barriers shall be sealed to achieve performance rating equivalent to the compartment and shall be designed to accommodate movement.    |
| F. | All service penetrations through fire rated compartments shall be fire stopped to achieve a rating equivalent to the compartment and shall be designed to accommodate movement.                         |
| G. | All services crossing the movement joints shall be installed to accommodate the movements as defined in the Structural Engineers Contract documentation.  |
| H. | The contractor will produce fully coordinated installation drawings prior to installation for approval.   |
| I. | The contractor will produce as built drawings prior to handover for approval.   |

Issue	Date	Description
1	06/08/2021	SSDA ISSUE

ARUP

Arup, Level 5 Barrack Place, 151 Clarence St  
Sydney, NSW, 2000  
Tel +61(02)9320 9320  
www.arup.com

GREENBOX

+61 2 8069 8930

LEVEL 25  
25 BLIGH ST  
SYDNEY NSW 2000 AUSTRALIA

GREENBOX ARCHITECTURE PTY LTD  
ABN: 79 139 779 068

ISO 9001 CERTIFIED QUALITY SYSTEM

Client  
PROPONENT

Project Title \_\_\_\_\_

KEMPS CREEK

Key Plan

Drawing Title  
**SUBSTATION ELEVATIONS**

Scale at A0	1 : 200	Drawn By	AH
Role	Architecture	Checked By	AO/MI
Suitability	A3	Approved By	AO
Job No	200036	Rev	1

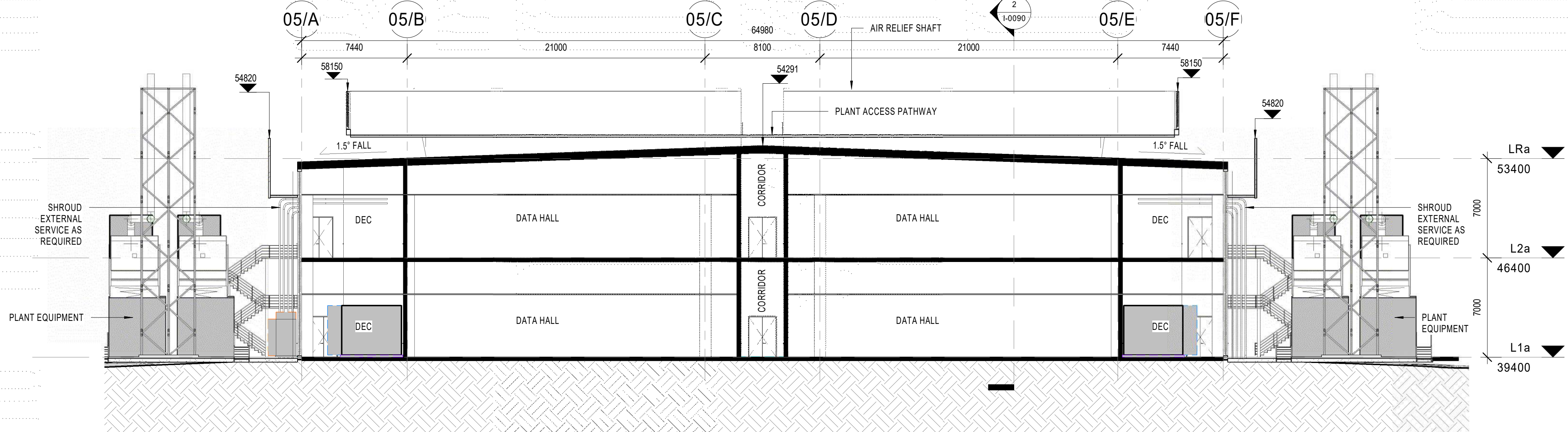
Sheet number .....  
SYD05-06-07 A-H-009

Scale bar  
Sc. 1:200 0 1 2 3 5 10m



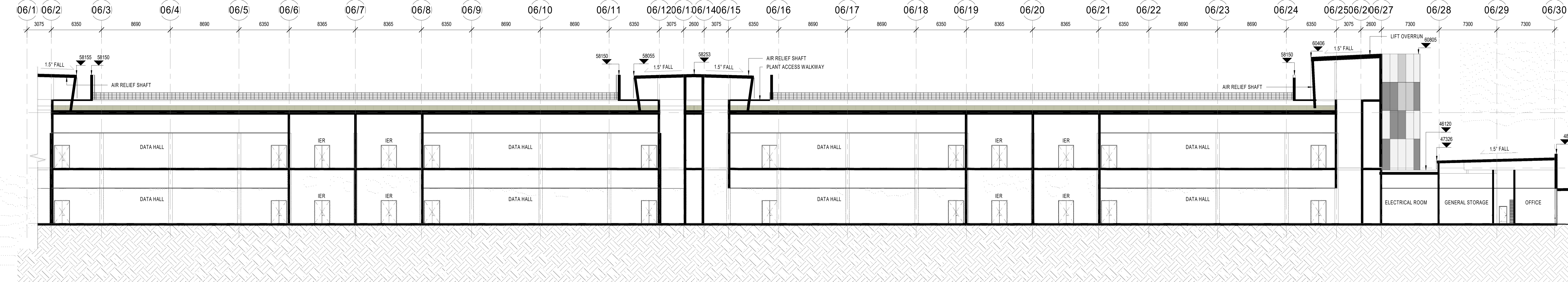
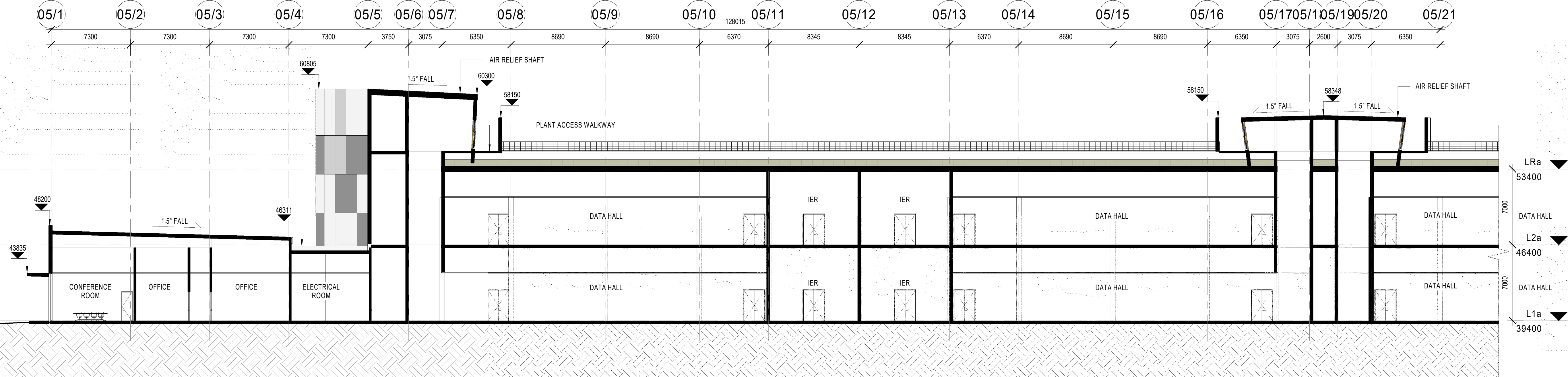
1 SYD05-06 ENLARGED SECTION 1

1:200



2 SYD05-06 ENLARGED SECTION 2

1:200



4 SYD05-06 ENLARGED SECTION 4

1:200

Approvals	
Customer	Date

General Notes:

- This is not an installation drawing and shows design intent information only.
- All dimensions are in millimeters (mm) unless noted otherwise. All levels are in metres (m) unless stated otherwise.
- Do not scale work to figures dimensions only. This drawing shall be read in conjunction with building services documents and other relevant contract documents.
- Equipment and plant details are not manufacturer specific. Contractor selected equipment shall meet the given constraints and long lead equipment will be coordinated based on final equipment selection.
- All service penetrations through fire, acoustic, thermal, air and watertight compartments shall be sealed to achieve performance rating equivalent to the compartment and shall be designed to accommodate movement.
- All services penetrations through fire rated compartments shall be fire stopped to achieve a rating equivalent to the compartment and shall be designed to accommodate thermal movement.
- All services crossing the movement joints shall be installed to accommodate the movements as defined in the Structural Engineers Contract documentation.
- The Contractor will produce fully coordinated installation drawings prior to installation for approval.
- The Contractor will produce as built drawings prior to handover for approval.

Notes:

Issue	Date	Description
1	09/03/2021	DRAFT SSSA
2	14/03/2021	DRAFT SSSA - WIP
3	19/03/2021	SSSA ISSUE

**ARUP**  
Arup, Level 5 Barrack Place, 151 Clarence St  
Sydney, NSW, 2000  
Tel +61(02)9320 9320  
www.arup.com

**GREENBOX**

+61 2 8089 8930  
LEVEL 25  
25 BLIGH ST  
SYDNEY NSW 2000 AUSTRALIA  
GREENBOX ARCHITECTURE PTY LTD  
ABN: 79 139 779 058  
ISO 9001 CERTIFIED QUALITY SYSTEM

Client: PROPONENT

Project Title:  
SYD05-06-07  
KEMPS CREEK

Key Plan

Drawing Title:  
SECTIONS - SYD05-06 - ENLARGED

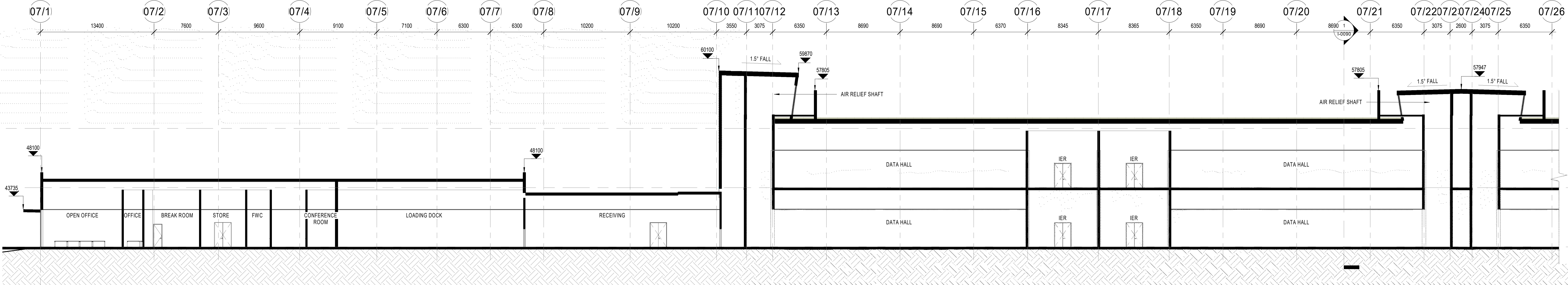
Scale at A3	1:200	Drawn By	AH_JN_AG
Role	Architecture	Checked By	MP
Subsidiary	A3	Approved By	AO
Job No	200036	Rev	3

Sheet number:  
SYD05-06-07\_A4-0091

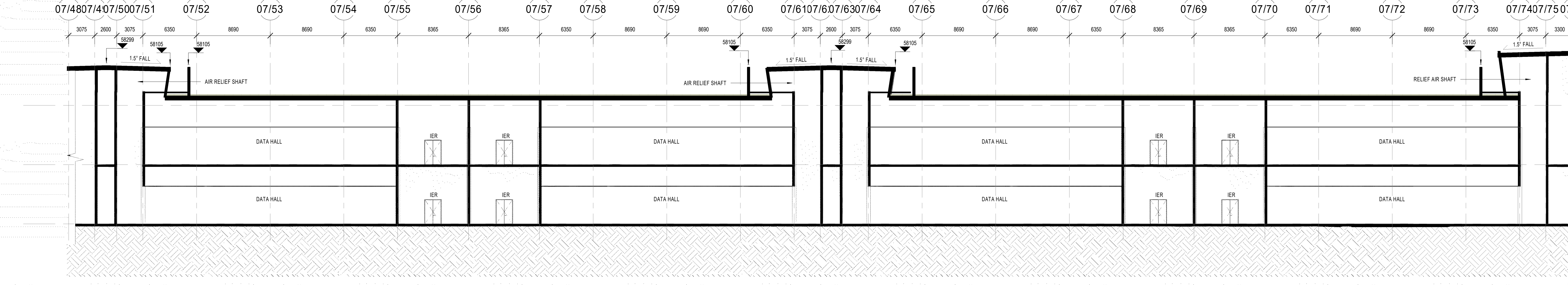
Scale bar:  
Sc: 1:100 0 1 2 3 5m



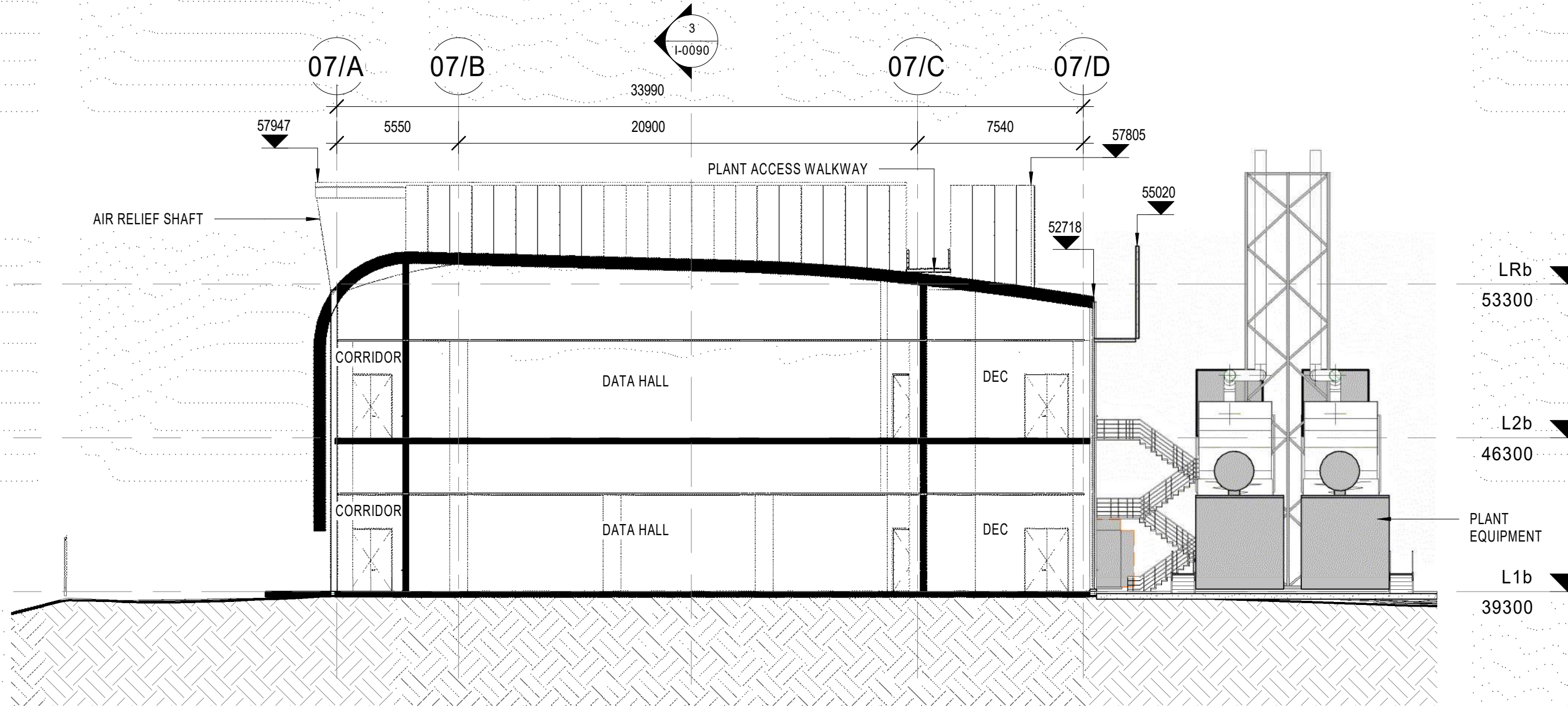
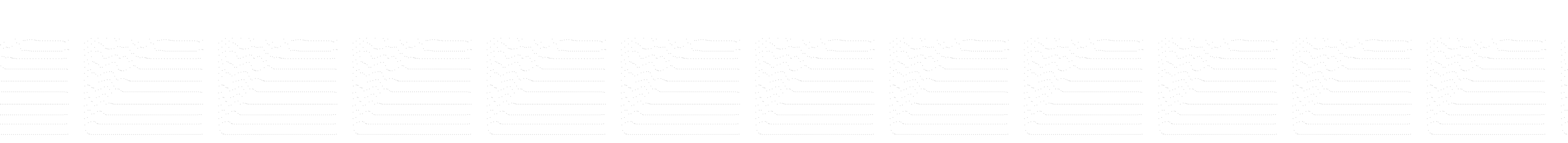
1 SYD07 ENLARGED SECTION 1  
1:200



2 SYD07 ENLARGED SECTION 2  
1:200



4 SYD07 ENLARGED SECTION 4  
1:200



Approvals	
Customer	Date

- General Notes:**
- A. This is not an installation drawing and shows design intent information only.
  - B. All dimensions are in millimeters (mm) unless noted otherwise. All levels are in metres (m) unless stated otherwise.
  - C. Do not scale work to figures dimensions only. This drawing shall be read in conjunction with building services documents and other relevant contract documents.
  - D. Equipment and plant details are not manufacturer specific. Contractor selected equipment shall meet the given constraints and long lead equipment will be coordinated based on final equipment selection.
  - E. All service penetrations through fire, acoustic, thermal, air and watertight compartments shall be sealed to achieve performance rating equivalent to the compartment and shall be designed to accommodate movement.
  - F. All services penetrations through fire rated compartments shall be fire stopped to achieve a rating equivalent to the compartment and shall be designed to accommodate thermal movement.
  - G. All services crossing the movement joints shall be installed to accommodate the movements as defined in the Structural Engineers Contract documentation.
  - H. The Contractor will produce fully coordinated installation drawings prior to installation for approval.
  - I. The Contractor will produce as built drawings prior to handover for approval.
- Notes:

Issue	Date	Description
1	09/03/2021	DRAFT SSSA
2	14/03/2021	DRAFT SSSA - WIP
3	19/03/2021	SSSA ISSUE

**ARUP**  
Arup, Level 5 Barrack Place, 151 Clarence St  
Sydney, NSW, 2000  
Tel +61(02)9320 9320  
www.arup.com

**GREENBOX**  
+61 2 8009 8930  
LEVEL 25  
25 BLIGH ST  
SYDNEY NSW 2000 AUSTRALIA  
GREENBOX ARCHITECTURE PTY LTD  
ABN: 79 139 779 058  
ISO 9001 CERTIFIED QUALITY SYSTEM

Client  
PROPOSITOR

Project Title  
SYD05-06-07  
KEMPS CREEK

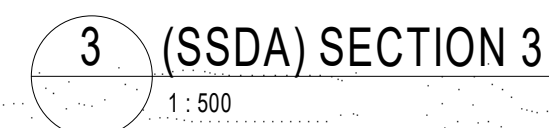
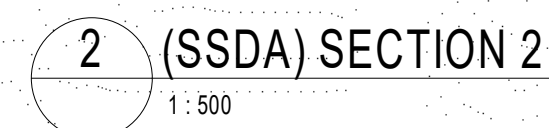
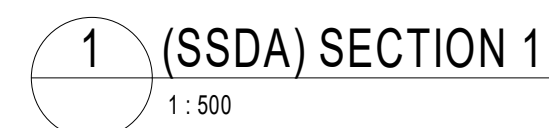
Key Plan

Drawing Title  
SECTIONS - SYD07 - ENLARGED

Scale at A3	1:200	Drawn By	AH_JN_AG
Role	Architecture	Checked By	MP
Subsidiary	A3	Approved By	AO
Job No	200036	Rev	3

Sheet number  
SYD05-06-07\_A4-0092  
Scale bar  
Sc: 1:100 0 1 2 3 5m





Scale bar  
Sc. 1:500 0 5 10 15 25m