

1

**PROPOSED BIKE PARKING AND END OF TRIP FACILITIES - GROUND FLOOR**

SKETCH DRAWING DA.SK003

**PROPOSED BIKE PARKING AND END OF TRIP FACILITIES - GROUND FLOOR**

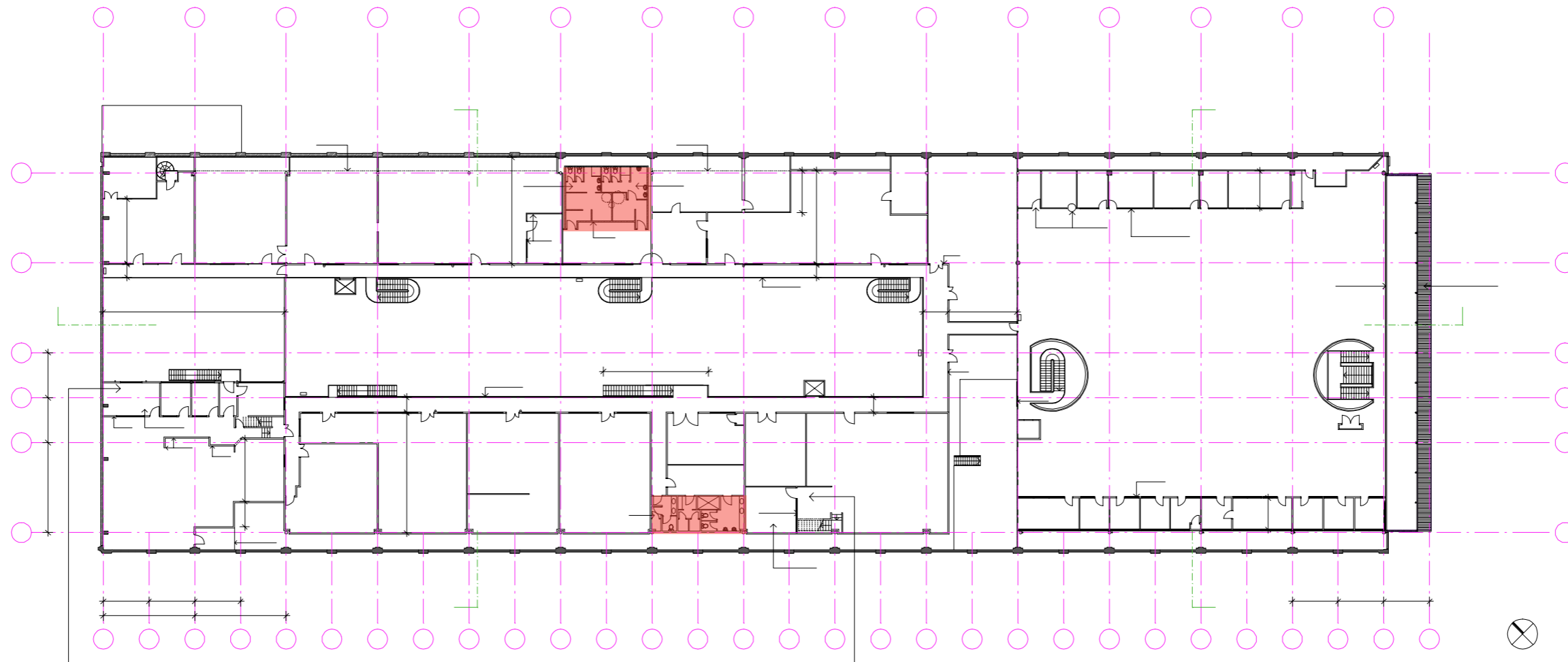
Scale: 1:200 @ A3

Date issued: 21/10/2025

durbach block jagers

Level 2, 9 Roslyn Street  
Potts Point NSW 2011  
02 8297 3500  
durbachblockjagers.com

Nominated Architects  
Neil Durbach NSW Reg. No 5850  
David Jagers NSW Reg. No 9999



1 **END OF TRIP FACILITIES - MEZZANINE LEVEL**

SKETCH DRAWING DA.SK004  
END OF TRIP FACILITIES - MEZZANINE LEVEL  
Scale: 1:200 @ A3  
Date issued: 21/10/2025

**durbach block jagers**  
Level 2, 9 Roslyn Street  
Potts Point NSW 2011  
02 8297 3500  
durbachblockjagers.com  
Nominated Architects  
Neil Durbach NSW Reg. No 5850  
David Jagers NSW Reg. No 9999