



DARLINGTON PUBLIC SCHOOL
 SSD - 9914 ARCHITECTURAL DESIGN UPDATE

RESPONSE TO GANSW

GOLDEN GROVE STREET, DARLINGTON, SYDNEY
 Department of Education

fjmt studio architecture interiors urban landscape
 28 SEPTEMBER 2020 REV 01



Project Name	Darlington Public School		
Project Code	DTPS		
Document Name	SSD-9914 Architectural Design Update		
Revision	Date	Comment	Approved
REV 00	10.09.20	Response to GANSW Report	EC
REV 01	28.09.20	Response to GANSW Report	EC
REV 02	29.09.20	Updated images	EC

Sydney Level 5, 70 King Street, Sydney NSW 2000 Australia **t** +61 2 9251 7077
melbourne Level 2, 56 Hardware Lane, Melbourne VIC 3000 Australia **t** +61 3 9604 2500
uk Level , St Aldates, OX1 1BS United Kingdom **t** +44 1865 520 420

w fjmtstudio.com

Francis-Jones Morehen Thorp Pty Ltd ABN 28 101 197 219
Nominated architect Richard Francis-Jones ARBNSW 5301
Registered architect Richard Francis-Jones
Francis-Jones Morehen Thorp Ltd Company no 7384142 ARB 078103G

CONTENTS

RESPONSE TO GANSW 4

1.0 FACADE ARTICULATION 5

Golden Grove Street - Elevation Comparison	5
View Comparison	6
Abercrombie Street - Elevation Comparison	8
Updated Facade Sections - South Facade	9

2.0 GOLDEN GROVE STREET FACADE & HALL VOLUME 11

Elevation Comparison	11
Golden Grove Street - Facade Detail	12
Golden Grove Street - Facade Sections	13

3.0 LANDSCAPED SETBACKS 14

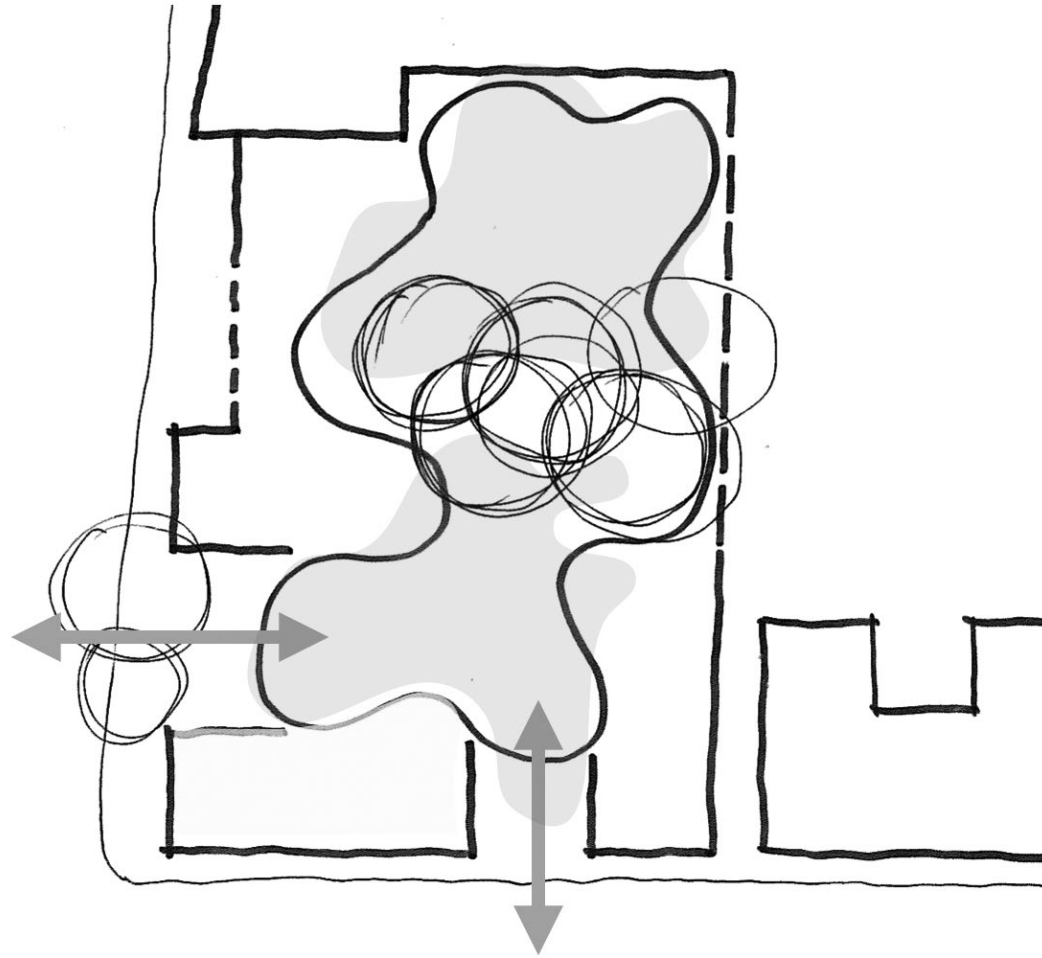
General Arrangement Plans	14
3D View	15

4.0 GOLDEN GROVE STREET - PUBLIC AMENITY 16

Landscaping and Sightlines	16
Communal Hall and Covered Undercroft	17

5.0 ARCHITECTURAL DOCUMENTS 18

- General Arrangement Plans	18
- Elevations	18
- Sections	18



RESPONSE TO GANSW

Item	Government Architect Initial Response to SSDA, 09 July 2020	fjmt Response	Page
1	The proposed buildings present large blank facades to both Golden Grove and Abercrombie streets. Articulation of the facades, further definition of openings and detailing of materials to positively address the public domain is requested.	<p>The facades facing Abercrombie Street have been further developed and articulation to the western and southern facades has been incorporated.</p> <p>The glazing and brickwork to the southern facade of the hall building has been detailed to provide a finer grain response to the streetscape.</p> <p>The previous single large window into the south facade of the communal hall has been divided into 5 smaller windows. These are set into a recessed brick facade with large splayed sills and clearly defined brick blades between the glazing elements.</p> <p>This creates a more interesting street frontage, responding to the local context and a more structurally efficient result.</p> <p>The openings along the low-level brick facade facing Golden Grove street have also been refined.</p>	Refer Section 1.0, pages 5-10.
2	The learning block is contained within a 3 story element which appears overscaled. The rationale for clearstory windows and their environmental amenity is understood and accepted, however the forms need to be detailed and articulated to break down the scale of the block.	<p>The sawtooth forms have been more clearly defined with the introduction of a contrasting material in the form of a curved powdercoated aluminium profile to the vertical recesses between each sawtooth bay. These articulated recesses help to locate and integrate the surface-mounted downpipes within the facade and reduce the scale of the two storey 'learning neighbourhood' block.</p> <p>The windows to the level 1 classrooms on the western facade (Golden Grove Street) have been changed from vertical slot windows to horizontal strip windows with vertical brick external blades, which provide solar shading from the western sun. This provides a larger expanse of light and views out from the classrooms, and a more integrated approach to the fenestration in this facade. In addition to this, a window has been added on the southern end of the western facade, due to the new staff room location above the hall.</p> <p>During design development it was revealed that the ceiling height of the hall was too high and needed to be reduced to provide a more efficient and proportionate response. This has been done whilst still maintaining the sawtooth form and recognising the importance of the civic scale at the corner of Golden Grove and Abercrombie Streets.</p>	Refer Section 2.0, pages 11-13.
3	The previously included landscaped setback along Golden Grove street has been deleted, and the building no longer engages with the public domain in a positive manner nor does it contribute to public amenity. Articulation of this street edge and the inclusion of public amenity is requested.	<p>The Golden Grove facade is set back from the western boundary line by 2 meters. Landscaping at grade is proposed in this zone, including a feature tree near the south-western corner.</p> <p>The secondary entrance and fence line on Abercrombie Street has been set back 3 meters and incorporates a generous landscaped zone alongside the public footpath.</p>	Refer Section 3.0, pages 14-15

Item	Government Architect Initial Response to SSDA, 09 July 2020	fjmt Response	Page
4	The blank wall along Golden Grove street is a poorly considered threshold between the school and public domain and requires further detailing and amenity to be provided.	<p>The brick facade along Golden Grove Street is punctuated with openings that provide glimpses from the street to the school grounds. This wall provides privacy and security, without the need for extensive fencing.</p> <p>The two courtyards behind the Golden Grove Street facade, one located near the preschool and the other at the visitor entrance to the reception foyer, will be landscaped. Over time, the landscaping will extend above the Golden Grove street facade, providing glimpses of greenery between the lower street facade and the sawtooth facade behind.</p> <p>The main entrance to the school is via a large brick archway off Golden Grove Street, which provides access to a covered undercroft. The entrance has been moved away from the busy corner of Golden Grove and Abercrombie Streets in order to provide safer access to the school at drop-off and pick-up times and to enable direct access to the undercroft and communal hall for school and community events. <i>Please note that this corner has a roadway blister plus a pedestrian crossing (These are not indicated in the renders)</i></p> <p>The undercroft area has been designed so that it can be secured from the rest of the school grounds, effectively creating a large public space off Golden Grove Street for events and activities outside of school hours. <i>Following consultation with DPIE, the Golden Grove Street facade has been further articulated to align with the articulation of the corner of Abercrombie Street. This articulation will provide relief along the facade, with a focus on the corner wall. The opportunity is provided to either incorporate landscaping, with the introduction of a stainless steel wire climber, or to provide a change of materiality. The indicated materiality of the internal layer aligns with the materiality of the internal facades. (dark coloured integrated colour fibre cement sheet)</i></p>	Refer Section 4.0, pages 16-17
5	The proposed materiality notes brickwork can be patterned to achieve texture and transparency. Further detailing of the building facades is requested to demonstrate how this will be implemented.	<p>Please refer to the 3D views in this report, which show the development and articulation of the facades through the design development process.</p> <p>Through the design development process, development of the facades included the introduction of vertical slots to define openings and windows. This architectural language was developed as an alternative to patterning of the brickwork in order to articulate the facades.</p>	Refer 3D views, pages 7 and 10 and Facade Sections, page 9.
6	There is an opportunity for site and context specific artwork to be incorporated into the street facades integral with the materiality of the building to provide identity for the school and public amenity.	<p>An artwork consultant is to be engaged during the next stage of design development in order to coordinate the integration of new and existing artwork, in consultation with the community. Site specific artwork as part of the brick facade design will be considered during this process, <i>however the preference is to leave this open for an artistic interpretation with the school community rather than a prescriptive response.</i></p>	

1.0 FACADE ARTICULATION

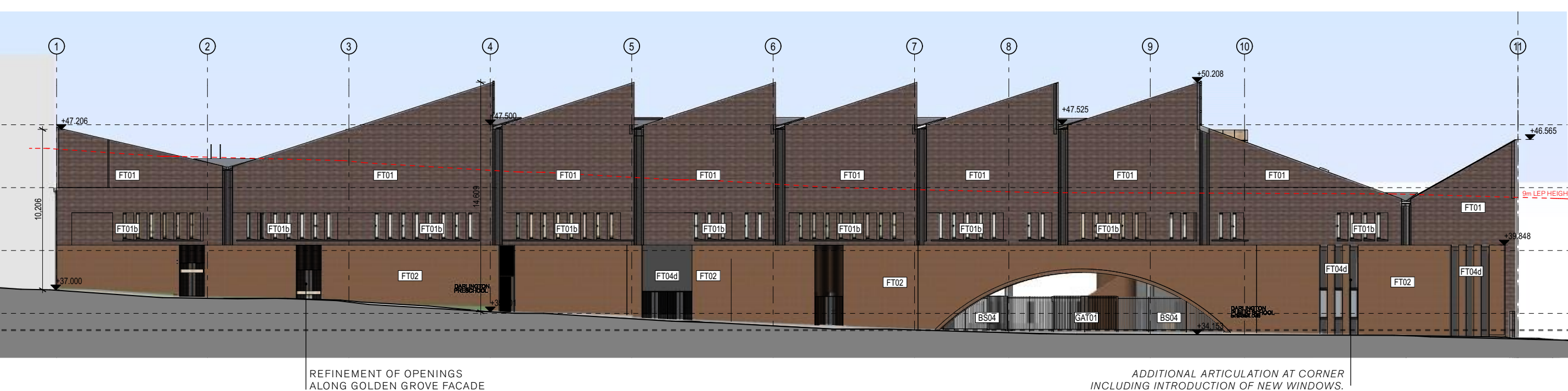
Golden Grove Street - Elevation Comparison

ABERCROMBIE STREET

Submitted SSDA - Golden Grove Street Elevation



SSDA Update - Golden Grove Street Elevation



View Comparison

Submitted SSDA



LOOKING TOWARDS CORNER OF GOLDEN GROVE AND ABERCROMBIE STREETS

SSDA Update



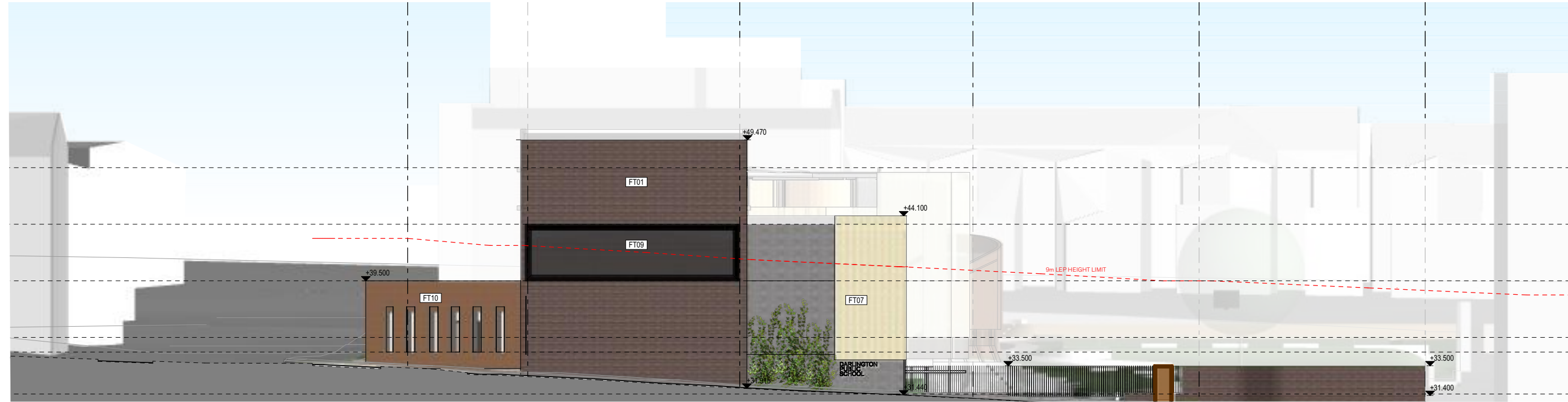
ADDITIONAL ARTICULATION AT CORNER INCLUDING INTRODUCTION OF NEW WINDOWS.

ADDITIONAL ARTICULATION AT CORNER PROVIDING THE OPPORTUNITY FOR ADDITIONAL PLANTING

LOOKING TOWARDS CORNER OF GOLDEN GROVE AND ABERCROMBIE STREETS

Abercrombie Street - Elevation Comparison

Submitted SSDA - Abercrombie Street Elevation



SSDA Update - Abercrombie Street Elevation

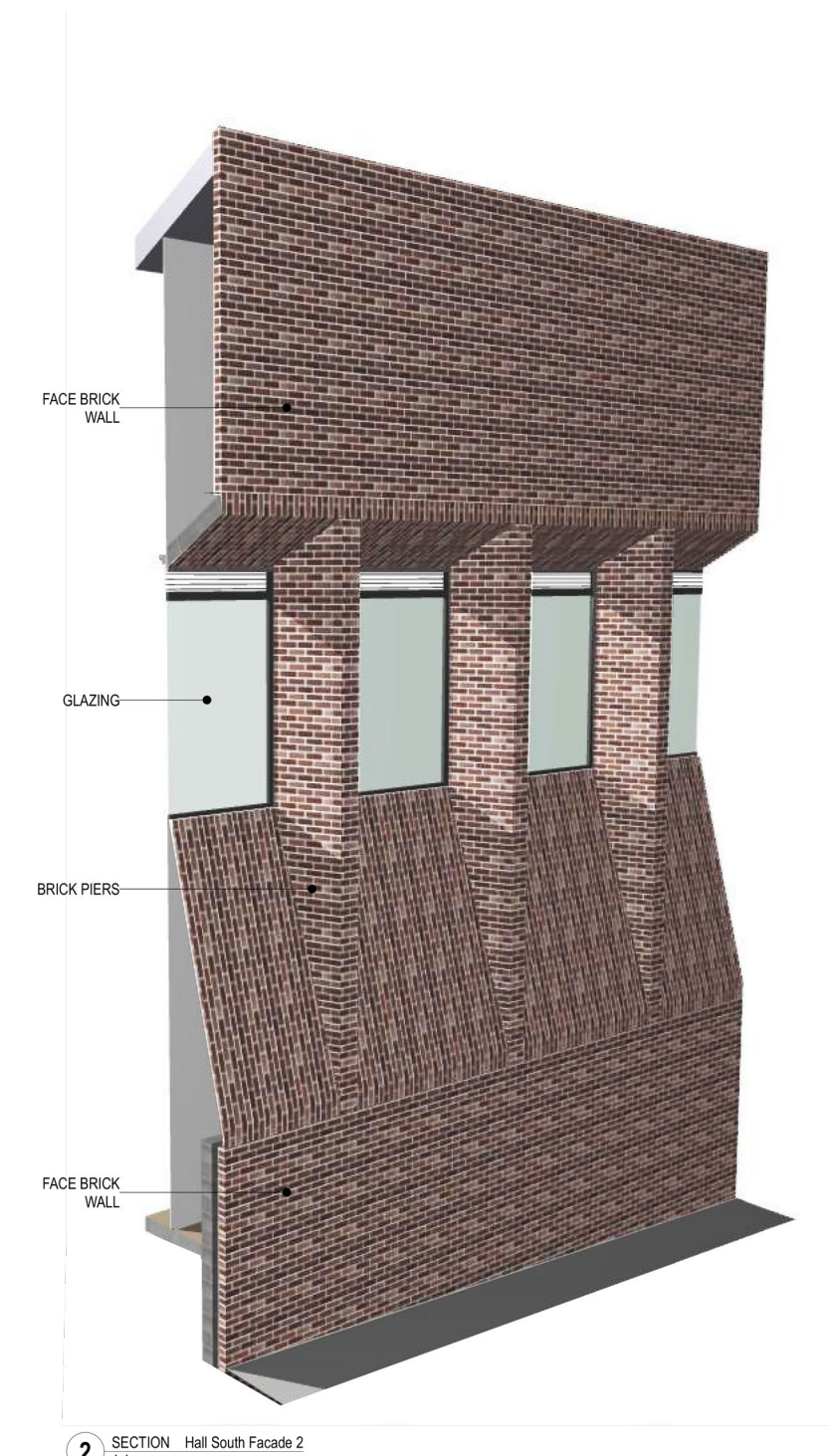
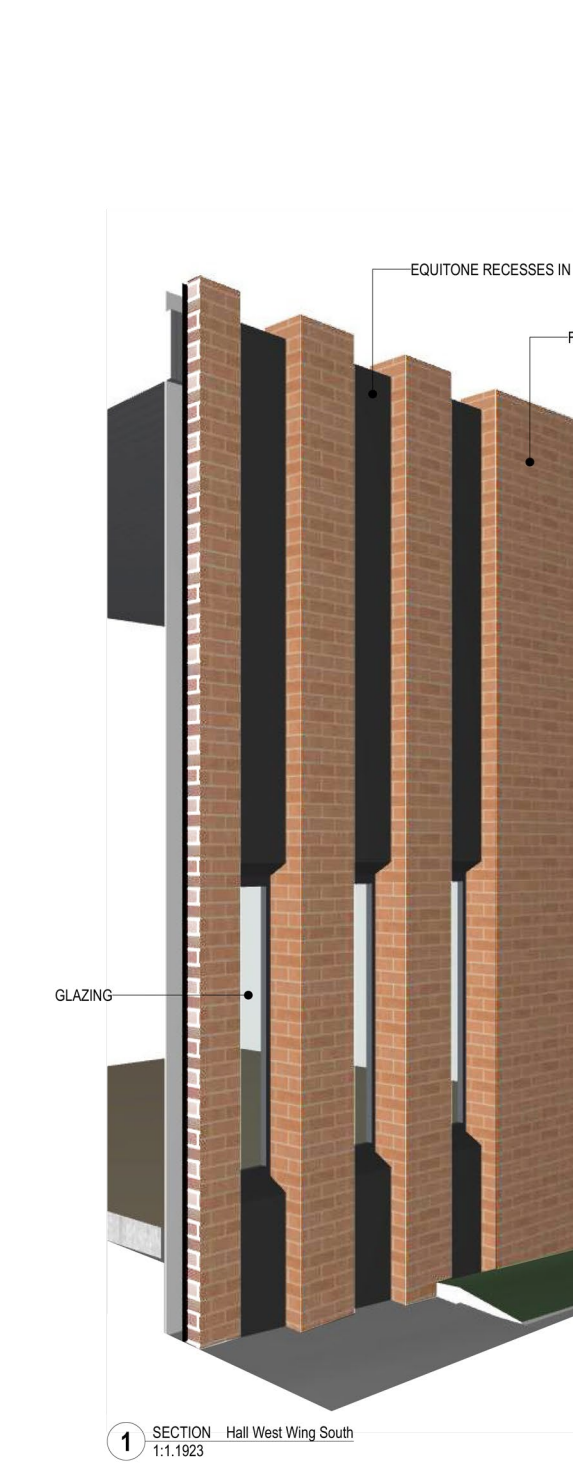


Updated Facade Sections - South Facade

SSDA Update



SOUTHERN ELEVATION



SSDA Update - View of South Facade and Secondary Entrance on Abercrombie Street



2.0 GOLDEN GROVE STREET FACADE & HALL VOLUME

Elevation Comparison

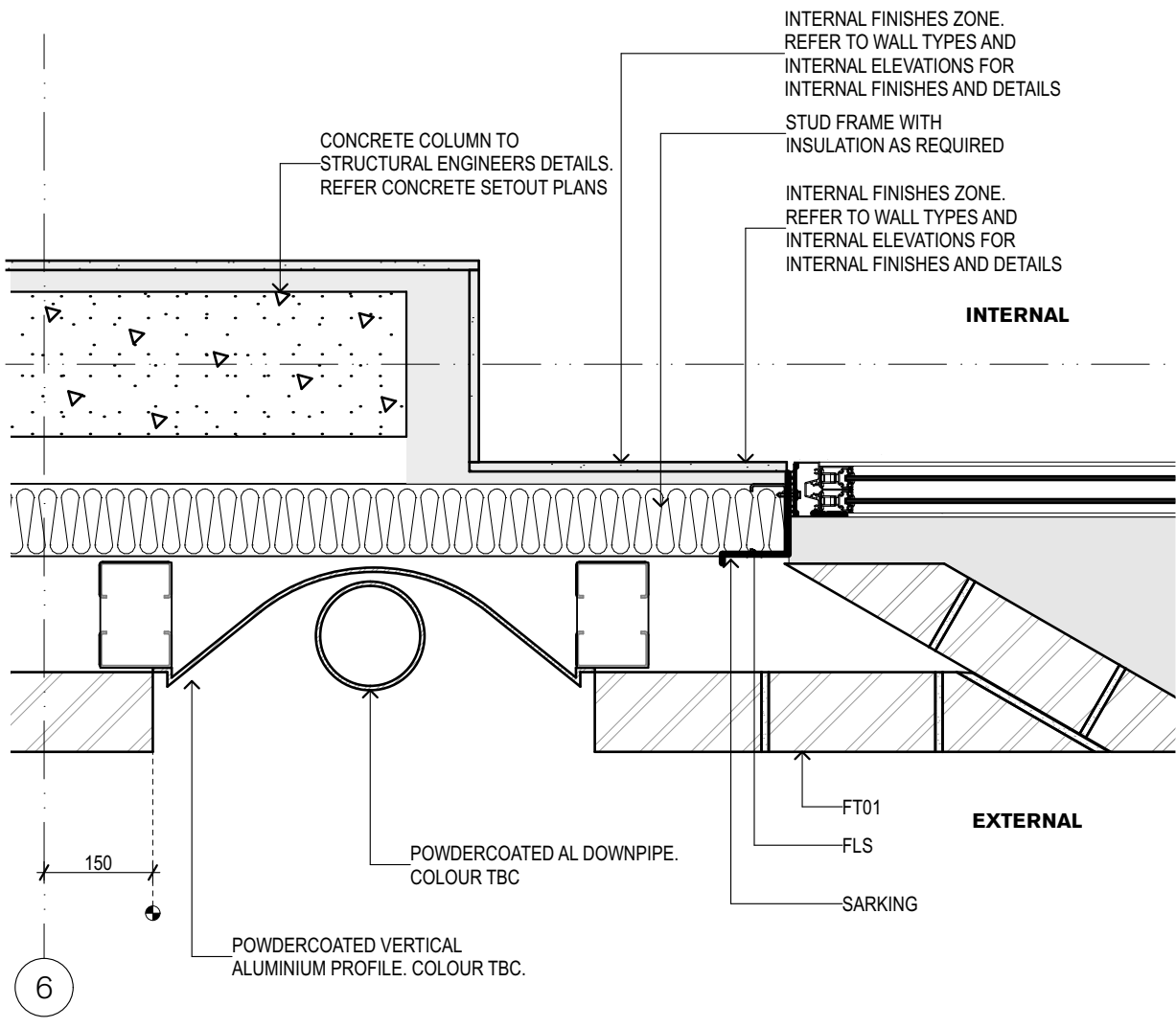
Submitted SSDA - Golden Grove Street Elevation



SSDA Update - Golden Grove Street Elevation



Golden Grove Street - Facade Detail



Plan Detail - Sawtooth facade vertical recess for downpipe



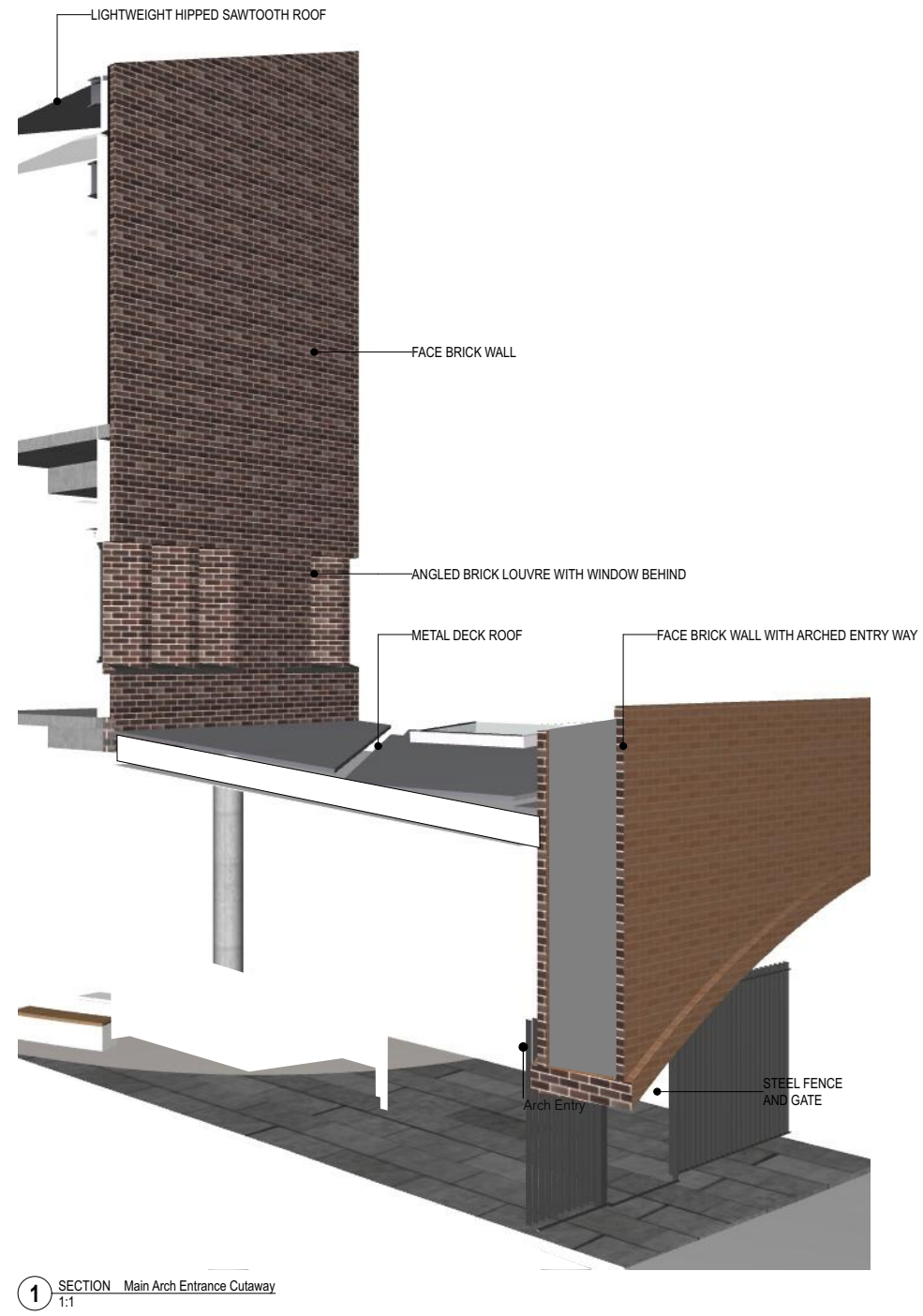
3D View showing typical vertical recess

Golden Grove Street - Facade Sections

SSDA Update

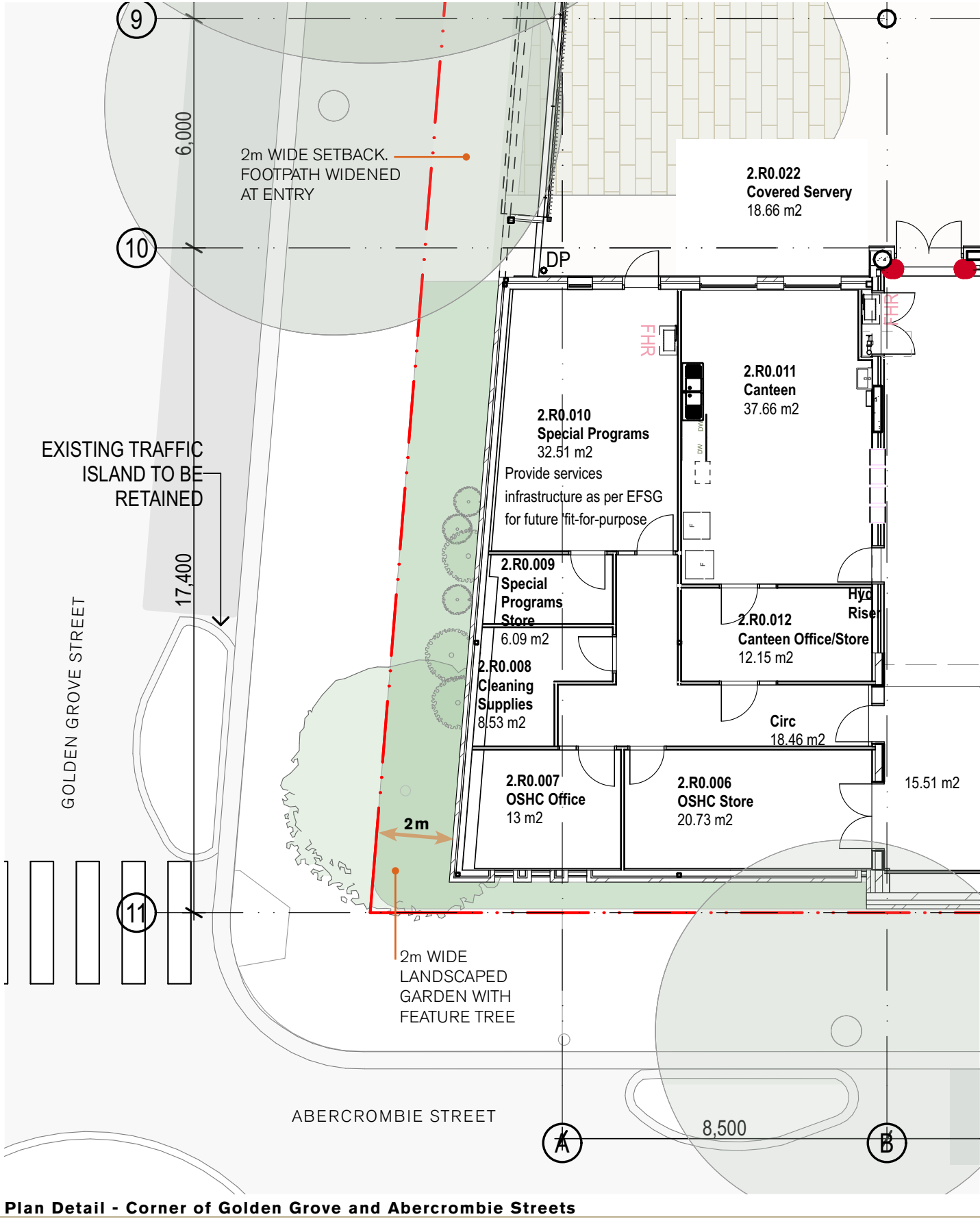
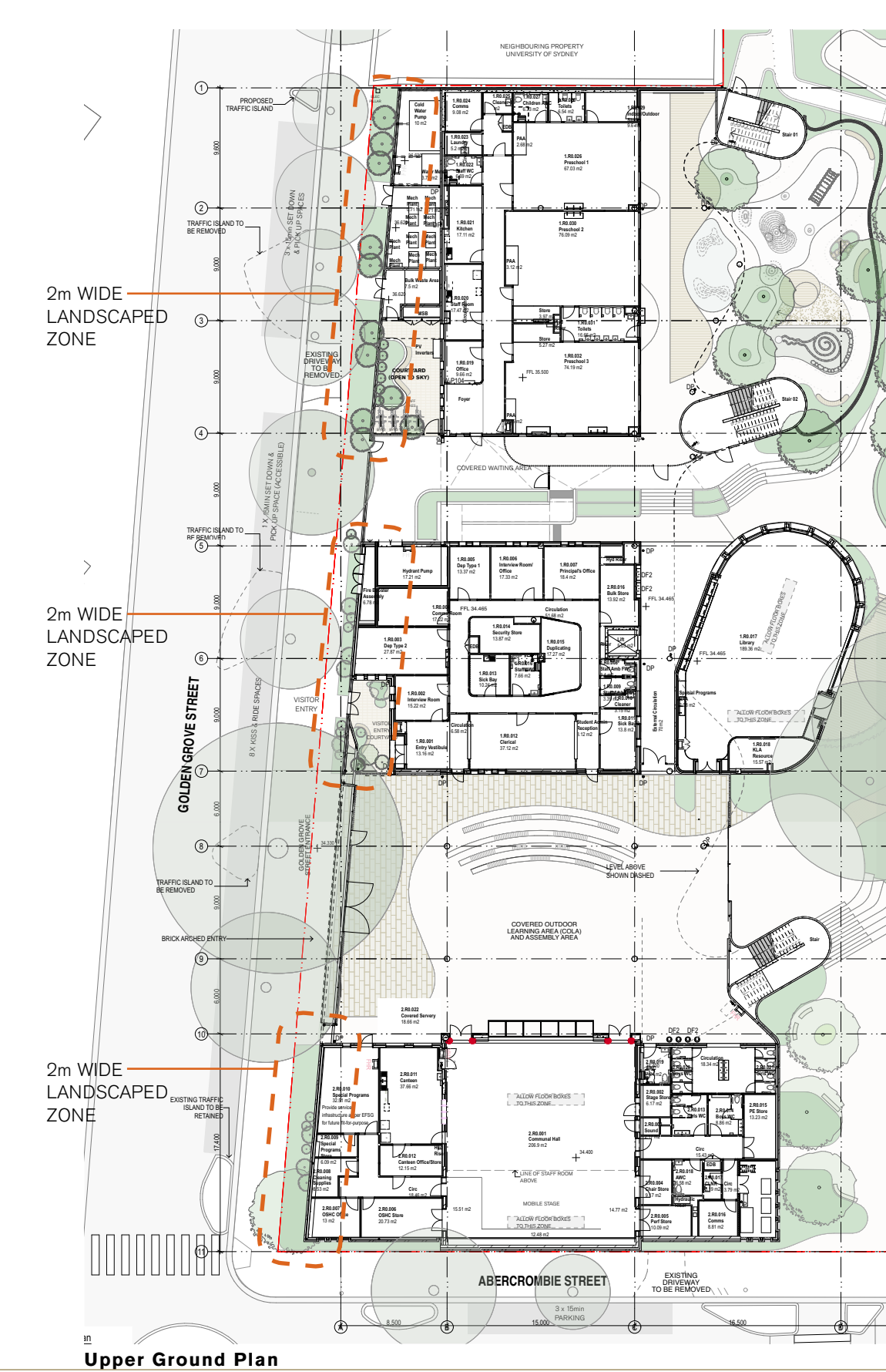


WESTERN ELEVATION



3.0 LANDSCAPED SETBACKS

General Arrangement Plans



3D View



LOOKING TOWARDS CORNER OF GOLDEN GROVE AND ABERCROMBIE STREETS

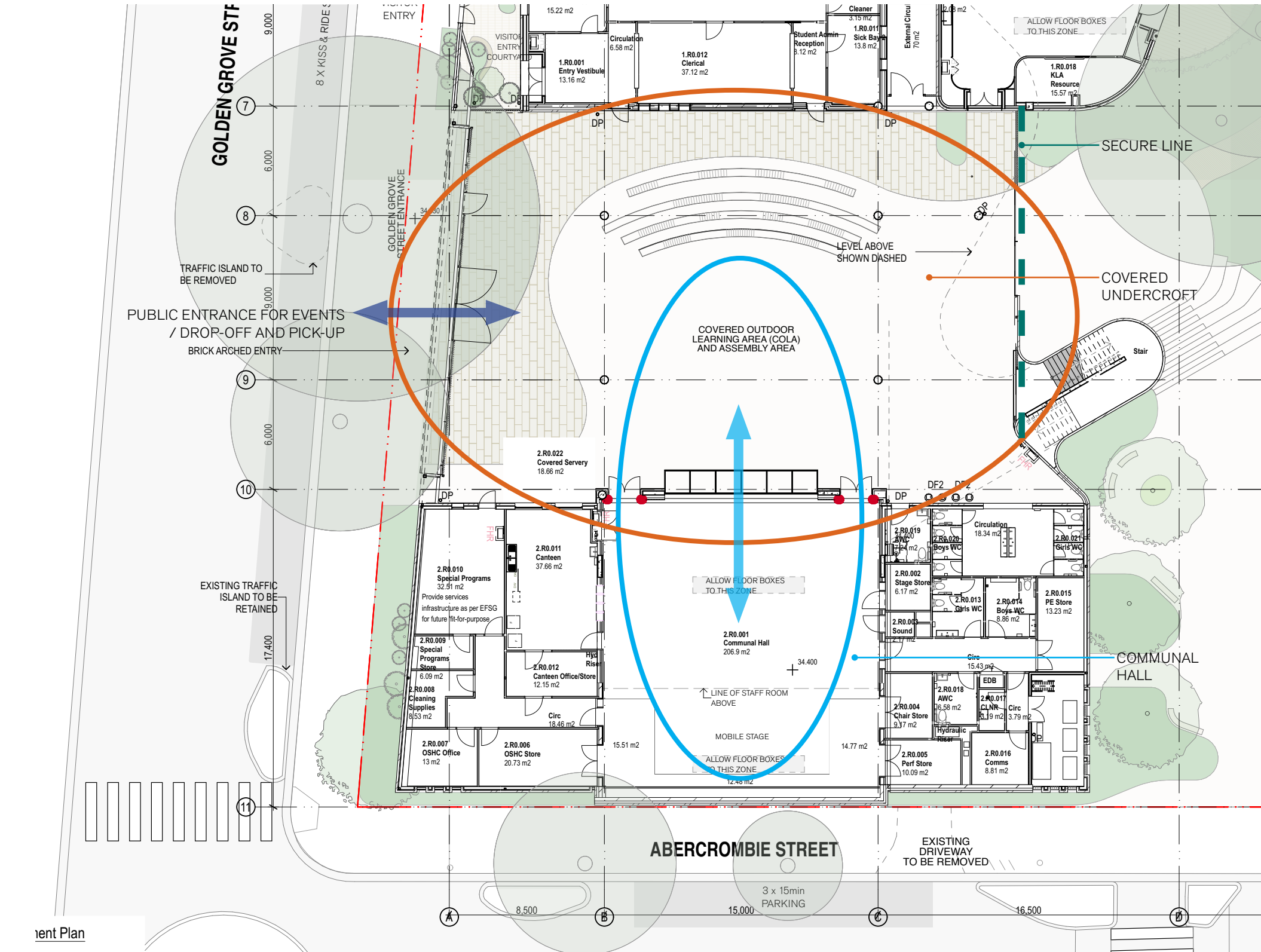
Landscaping and Sightlines



Golden Grove Street Elevation

- LANDSCAPE ZONE
- VIEW CORRIDOR / CONNECTION

Communal Hall and Covered Undercroft



Upper Ground Plan

5.0 ARCHITECTURAL DOCUMENTS



architecture
interiors
urban
landscape

The following drawings have been issued and should be read in conjunction with this report:

- General Arrangement Plans

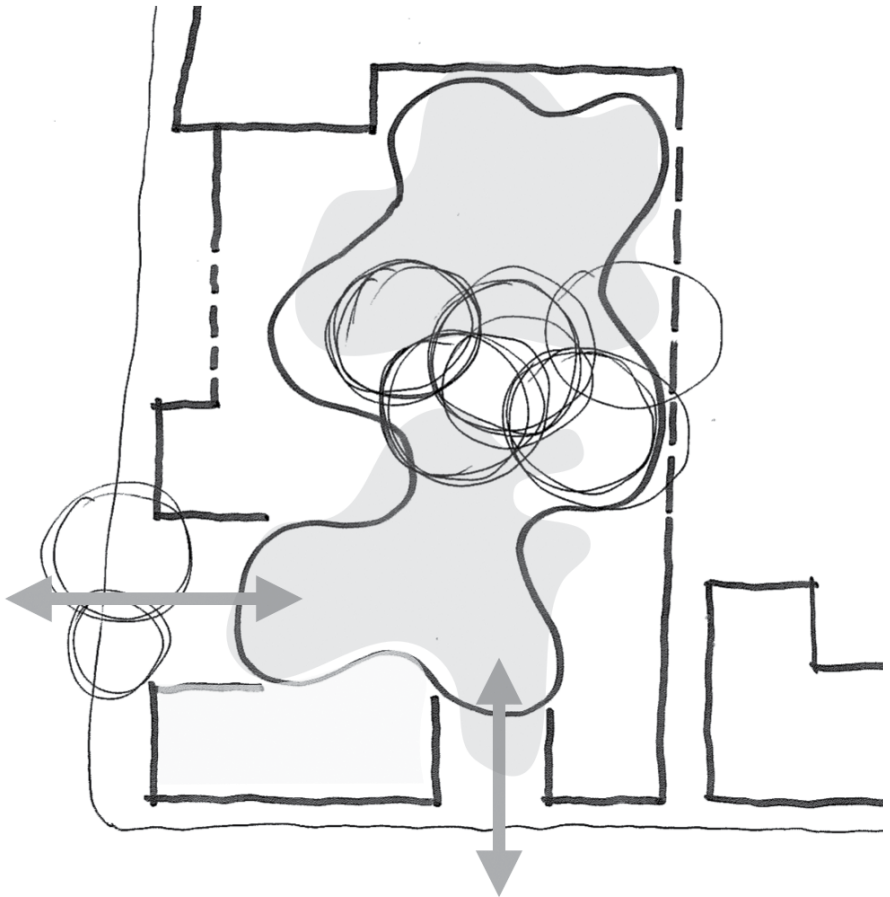
Drawings 2050 to 2054, Revision 04

- Elevations

Drawing 3200, Revision 04

- Sections

Drawings 4200 and 4201, Revision 04



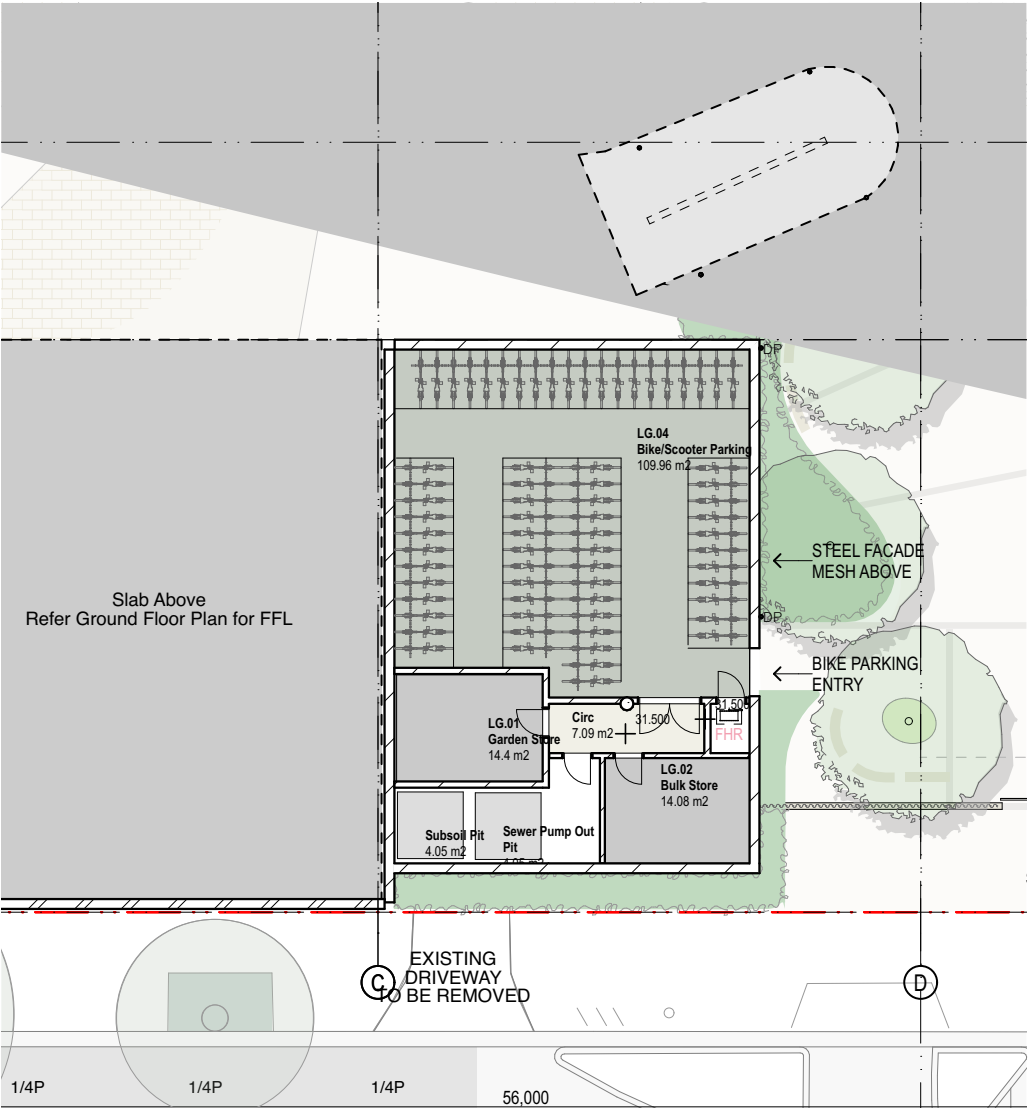
Sydney
Melbourne
Oxford
London

The bicycle storage area has been re-planned and we have been able to accommodate an increase in bicycle and scooter parking.

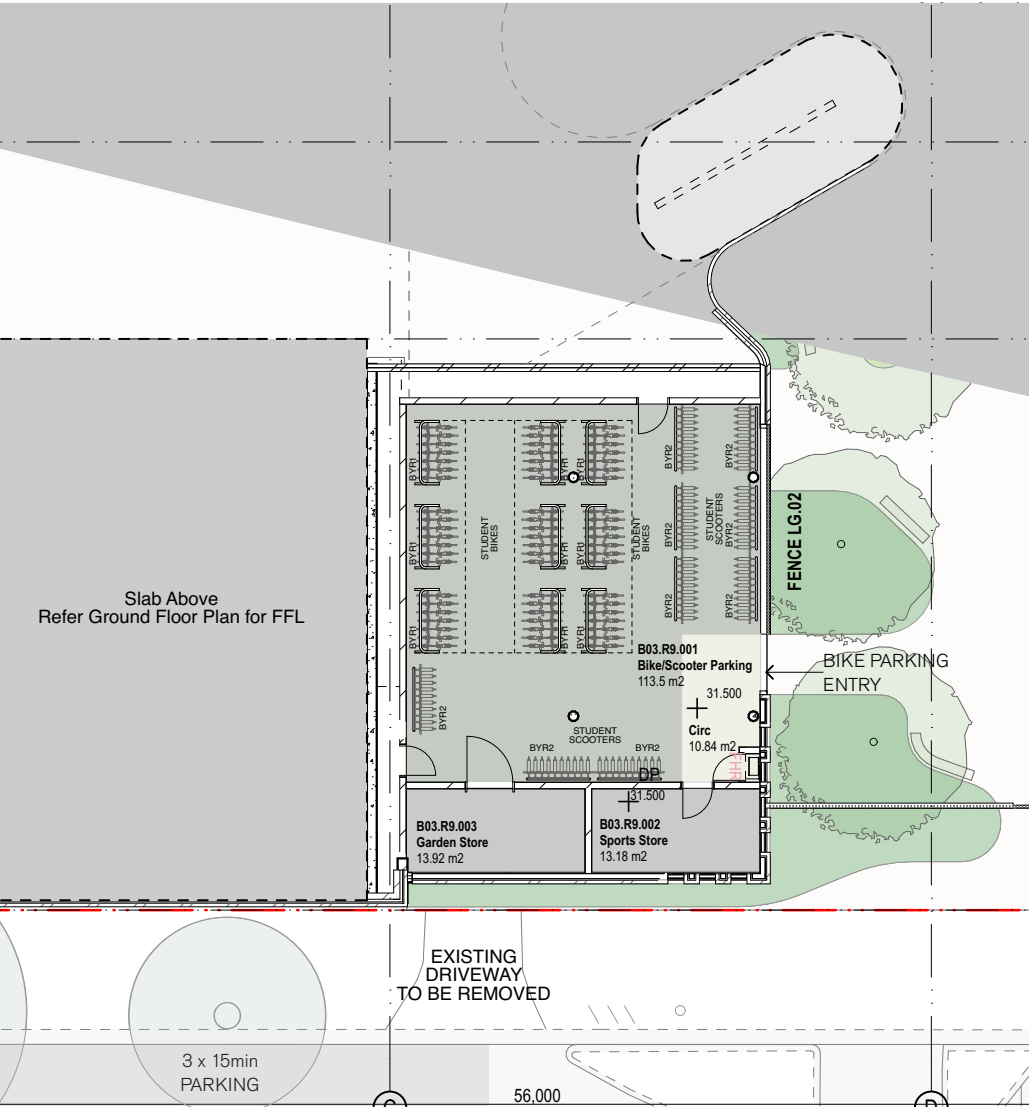
As a result, we now have 63 student bikes (9 junior bike racks that can hold 7 bikes each) and 110 scooters (10 scooters per rack), totaling 173 spaces for student bikes and scooters.

In addition, we have storage for 8 staff bicycles in the secure courtyard adjacent to Golden Grove Street.

Submitted SSDA - Lower Ground Floor Plan



SSDA Update - Lower Ground Floor Plan



Submitted SSDA



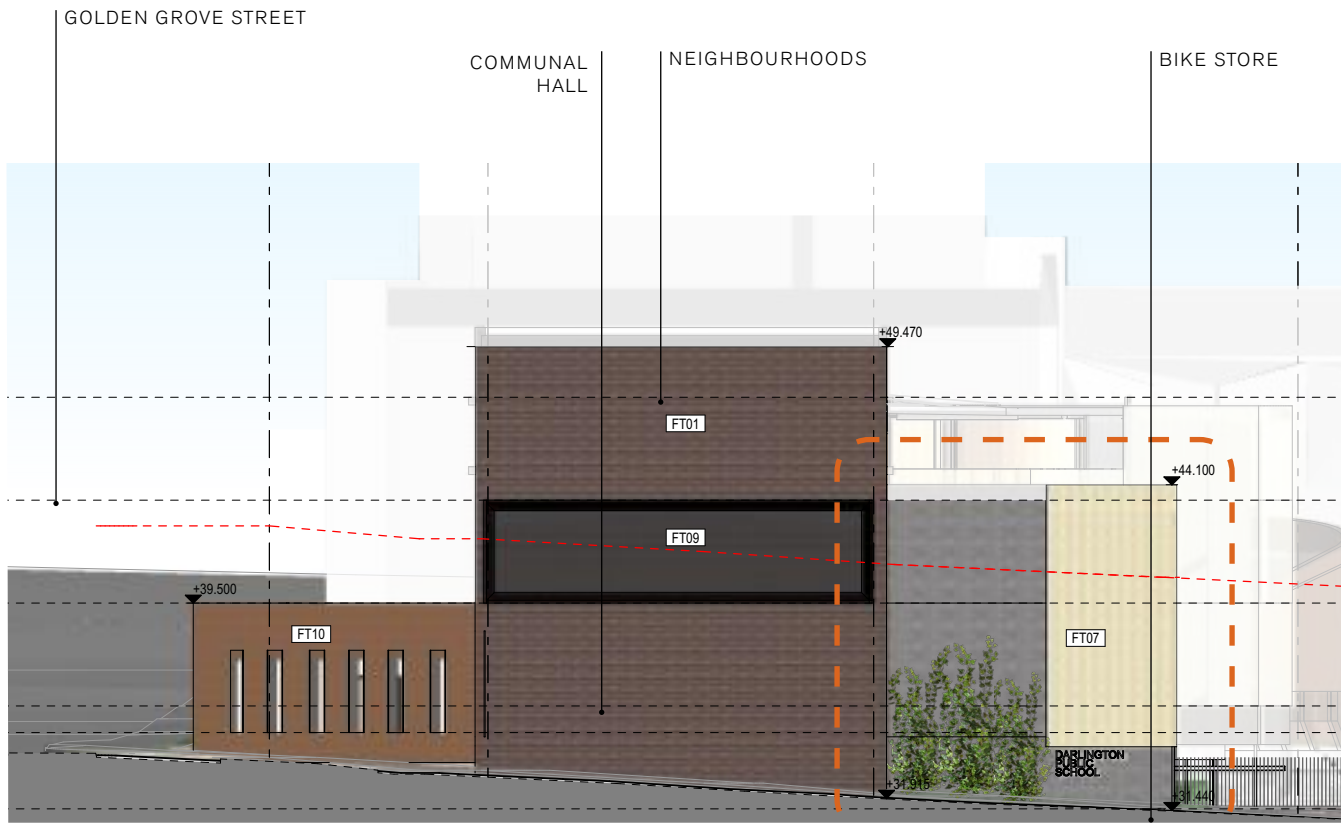
AERIAL VIEW

SSDA Update

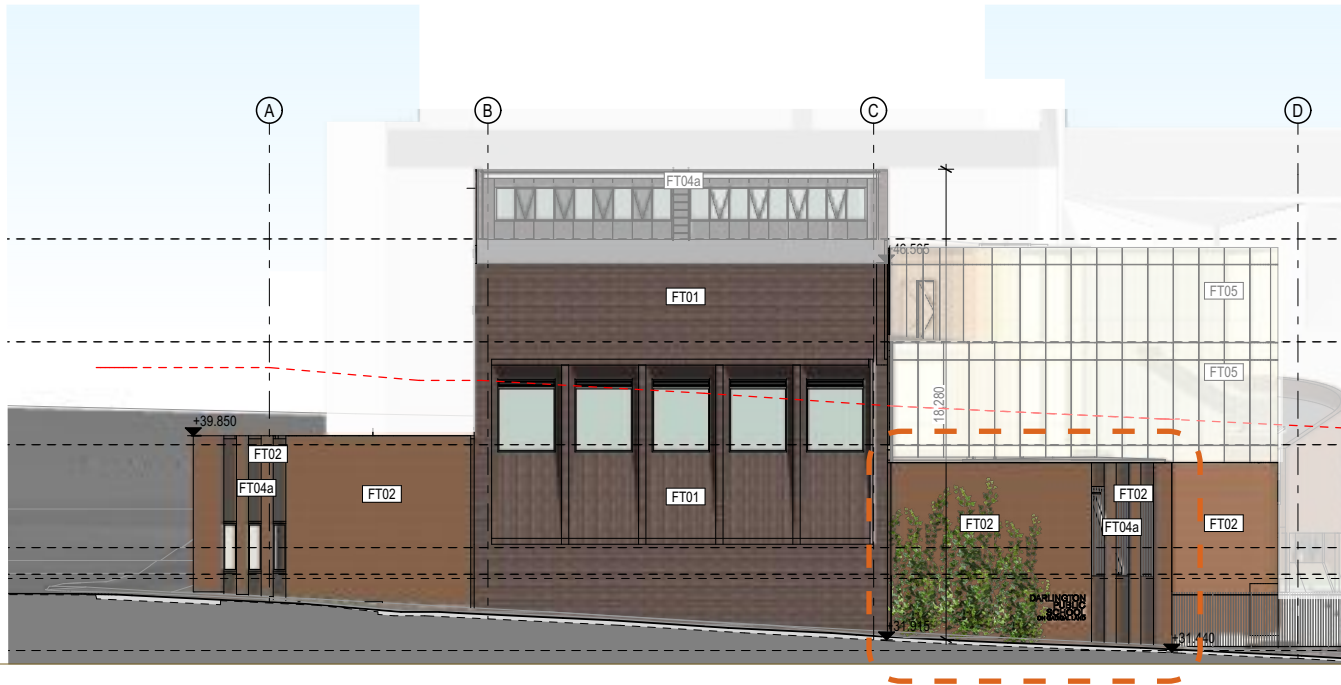


AERIAL VIEW

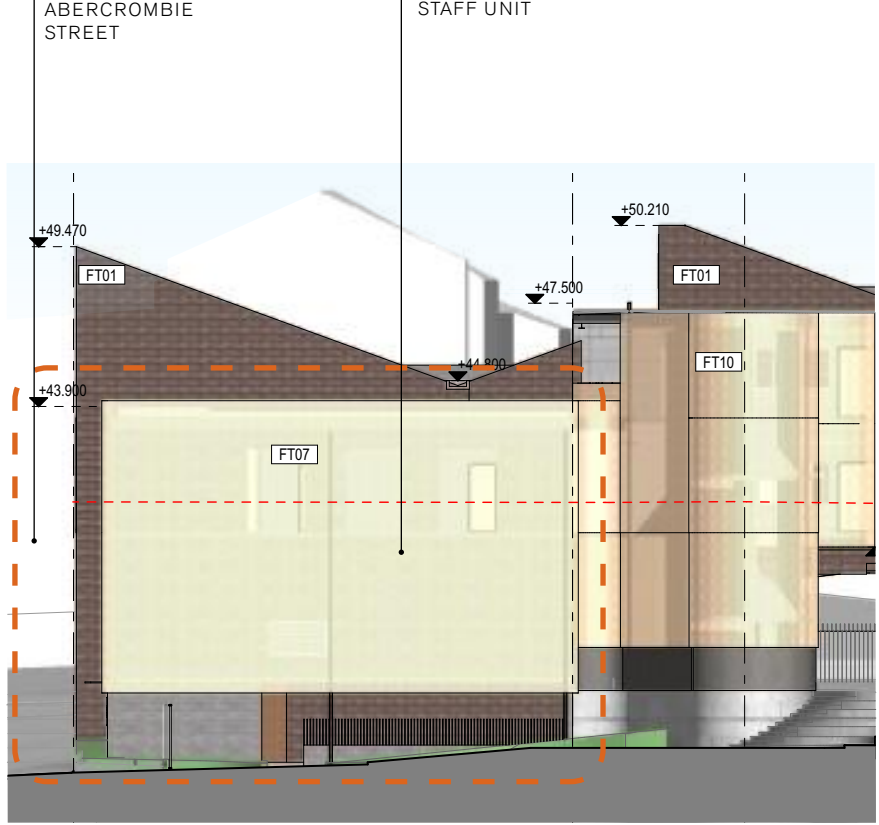
Submitted SSDA - Abercrombie Street Elevation



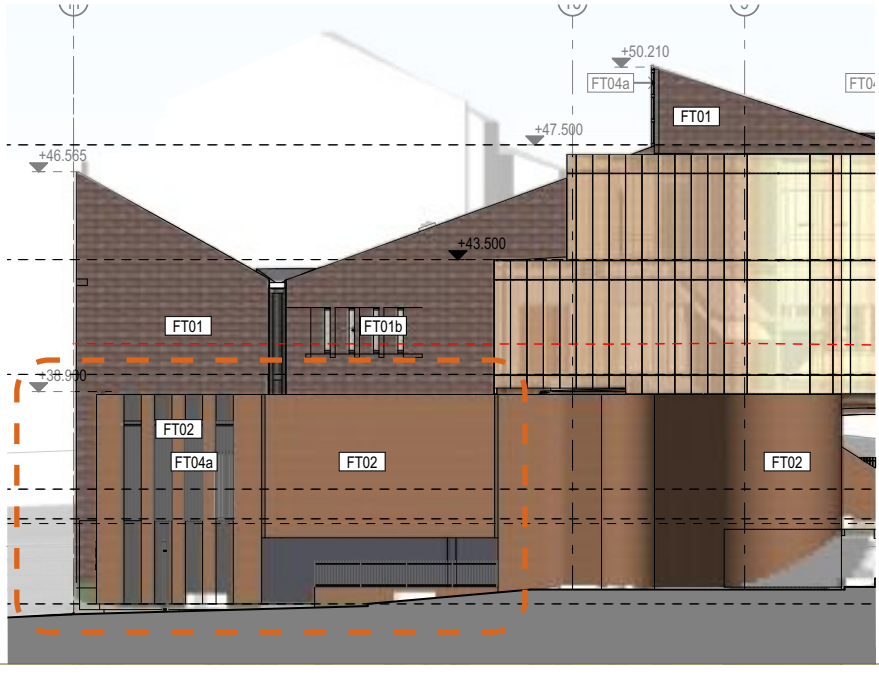
SSDA Update - Abercrombie Street Elevation



Eastern Elevation



Eastern Elevation



Submitted SSDA - Level 1 Plan

