

APPROXIMATE LOCATION OF EXISTING SYDNEY WATER MANHOLE (SW36) TO BE RETAINED. EXISTING COVER LEVEL 19.52. ADJUST COVER LEVEL TO SUIT NEW PAVING LEVEL. APPROVAL FROM SYDNEY WATER REQUIRED

SUBSOIL DRAIN

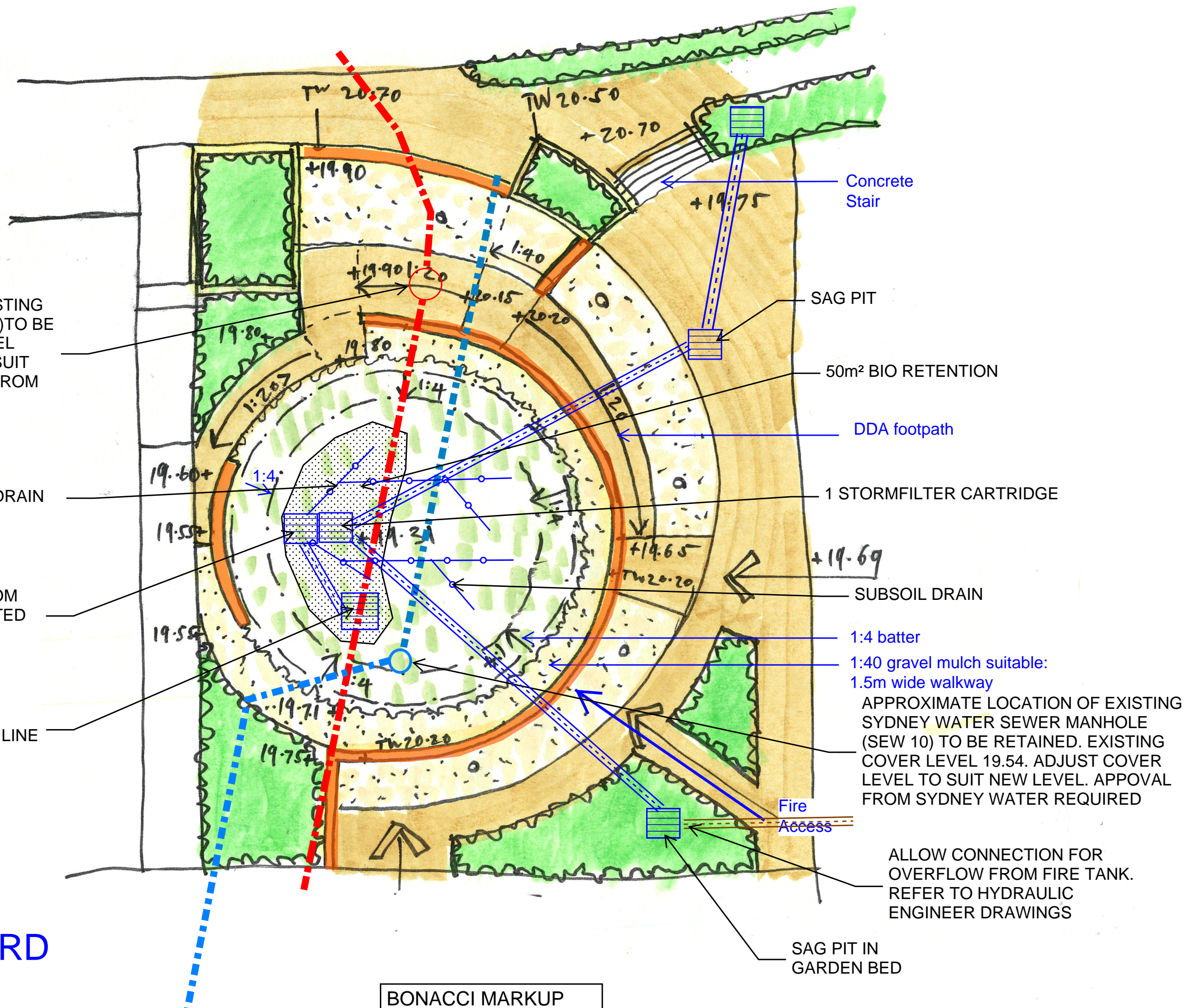
OVERFLOW PIT FROM BIORETENTION FITTED WITH ENVIROPOD

CONNECTION TO THE EXISTING SYDNEY WATER STORMWATER LINE

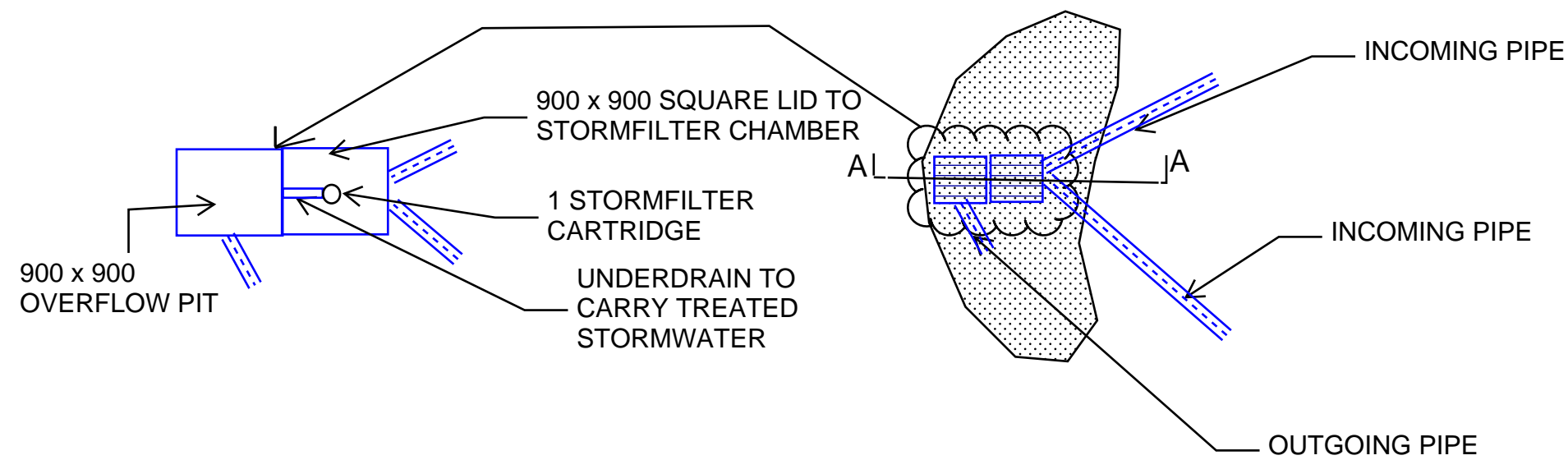
400-450mm high concrete seating wall

SOUTHERN COURTYARD

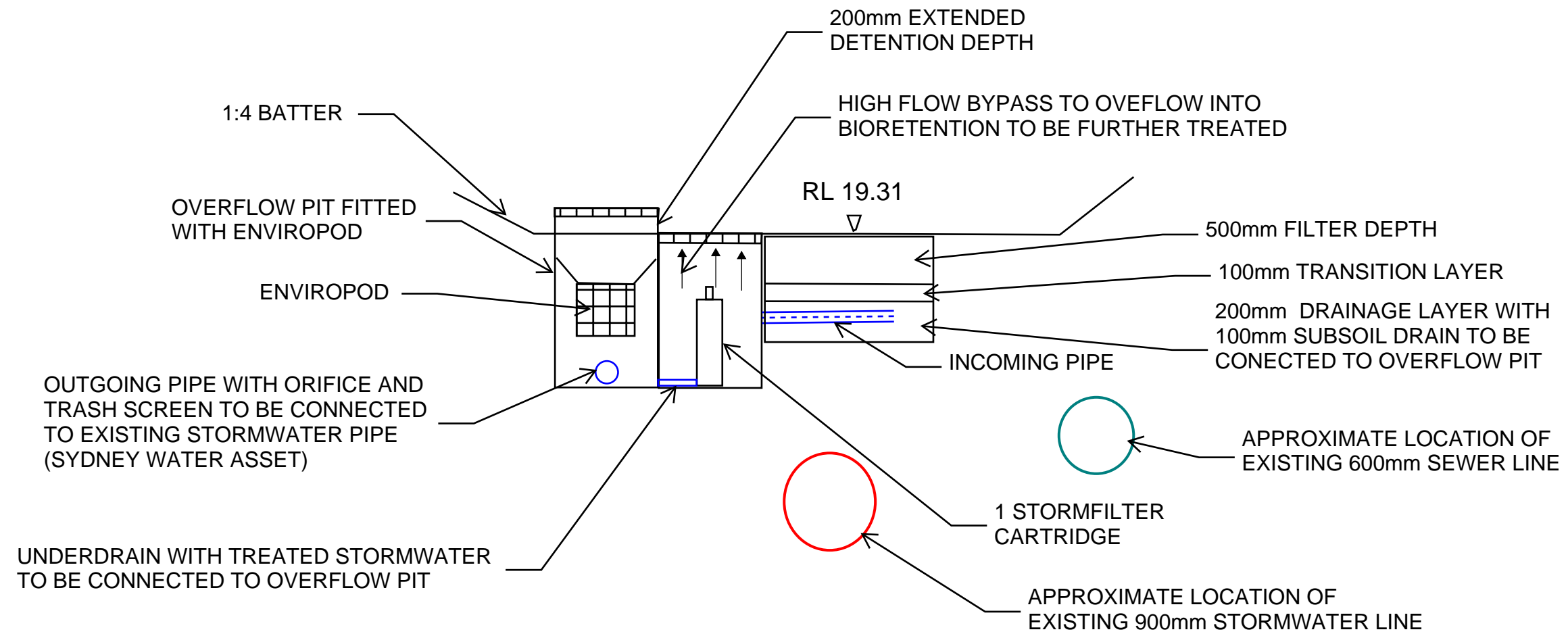
Scale 1:200 @ A3
TCL
03.08.2020



BONACCI MARKUP
04.08.2020



BIO RETENTION BASIN (50m²) WITH OVERFLOW PIT AND STORMFILTER CARTRIDGE CHAMBER



SECTION A-A (NTS)