

11th August 2020

NSW Government
Planning, Industry and Environment

Attention: David Gibson

Dear David,

**RE: University of Sydney - Engineering and Technology Precinct
Mod 2 (SSD-8636-Mod-2)
Request for Additional Information**



This letter is to confirm Cox Architecture's support towards the current proposed design for the South, North and East plazas as part of the Engineering and Technology Precinct project at University of Sydney. Cox considers that it is an improvement to the design presented as part of the State Significant Development Application submission (Ref: SSD-8638).

The current design improves the connectivity throughout the landscape, defines gathering spaces and improves user access experience, achieving DDA compliance.
The proposed scheme is fit for use.

Please refer to the supporting documentation as included in Appendix A.
The supporting documentation include comparison plans showing approved and proposed plazas and additional information about the Basin D replaced by a bioretention basin.
Moreover, It includes the changes to plant species and number of trees across the site.

We trust the provided information respond to the Department letter dated 16 July 2020.

Yours faithfully

**David Holm
Director**

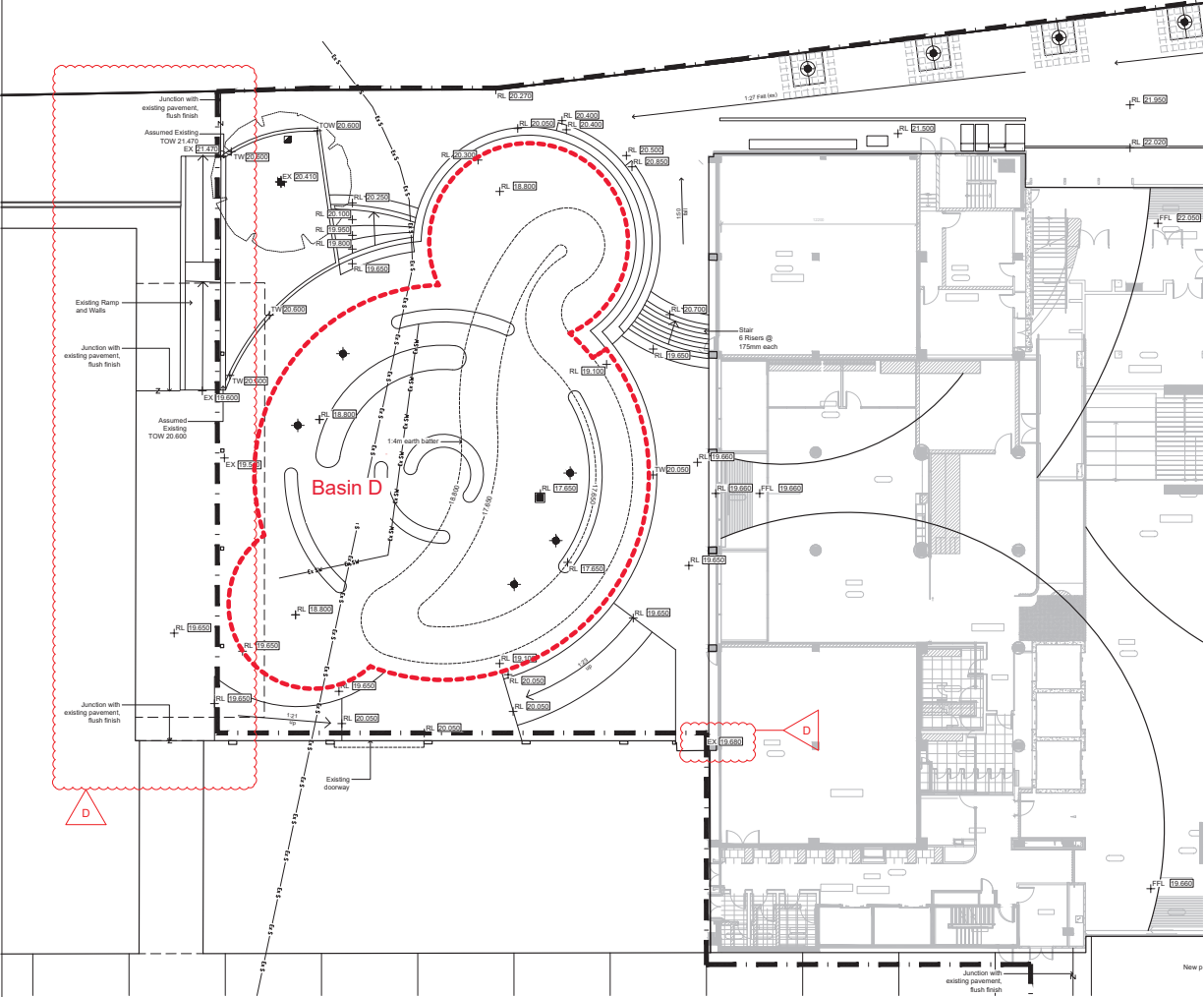
Cox Architecture

Attached:
Appendix A – Package of landscape drawings by TCL.

Cox Architecture Pty Ltd
ACN 002535891
Nominated Architects
Joe Agius No. 6491
Russell Lee No. 6367

PO Box Q193
Sydney NSW 1230
Level 6, 155 Clarence St
Sydney NSW 2000 Australia
T + 61 2 9267 9599
F + 61 2 9264 5844
www.coxarchitecture.com.au

SSDA approved plan - South Plaza



LEGEND

- Extent of Works
- Existing Level (RL) To be retained
- New Proposed Surface Level
- Top of Wall (TOW)
- Top of Edging Footpath Level
- Existing Fall (ex) To be retained
- Proposed Gravelled Foot
- Step Up Surface (SUS)
- Flush Surface

NOTE:

- All proposed levels are to be marked up by Contractor and approved by Landscape Architect prior to construction.
- All existing levels are to be increased inside by Contractor prior to construction.
- All road elevations, gullies & conduits refer Civil Engineer's documentation.
- All service pits, gullies & conduits refer Service Engineer's documentation.

| NO. | REVISION | DATE | BY | CHKD |
|-----|--------------------|------------|-----|------|
| 1 | ISSUED FOR TENDERS | 10/01/2020 | ... | ... |
| 2 | ... | ... | ... | ... |
| 3 | ... | ... | ... | ... |
| 4 | ... | ... | ... | ... |
| 5 | ... | ... | ... | ... |
| 6 | ... | ... | ... | ... |
| 7 | ... | ... | ... | ... |
| 8 | ... | ... | ... | ... |
| 9 | ... | ... | ... | ... |
| 10 | ... | ... | ... | ... |
| 11 | ... | ... | ... | ... |
| 12 | ... | ... | ... | ... |
| 13 | ... | ... | ... | ... |
| 14 | ... | ... | ... | ... |
| 15 | ... | ... | ... | ... |
| 16 | ... | ... | ... | ... |
| 17 | ... | ... | ... | ... |
| 18 | ... | ... | ... | ... |
| 19 | ... | ... | ... | ... |
| 20 | ... | ... | ... | ... |
| 21 | ... | ... | ... | ... |
| 22 | ... | ... | ... | ... |
| 23 | ... | ... | ... | ... |
| 24 | ... | ... | ... | ... |
| 25 | ... | ... | ... | ... |
| 26 | ... | ... | ... | ... |
| 27 | ... | ... | ... | ... |
| 28 | ... | ... | ... | ... |
| 29 | ... | ... | ... | ... |
| 30 | ... | ... | ... | ... |
| 31 | ... | ... | ... | ... |
| 32 | ... | ... | ... | ... |
| 33 | ... | ... | ... | ... |
| 34 | ... | ... | ... | ... |
| 35 | ... | ... | ... | ... |
| 36 | ... | ... | ... | ... |
| 37 | ... | ... | ... | ... |
| 38 | ... | ... | ... | ... |
| 39 | ... | ... | ... | ... |
| 40 | ... | ... | ... | ... |
| 41 | ... | ... | ... | ... |
| 42 | ... | ... | ... | ... |
| 43 | ... | ... | ... | ... |
| 44 | ... | ... | ... | ... |
| 45 | ... | ... | ... | ... |
| 46 | ... | ... | ... | ... |
| 47 | ... | ... | ... | ... |
| 48 | ... | ... | ... | ... |
| 49 | ... | ... | ... | ... |
| 50 | ... | ... | ... | ... |
| 51 | ... | ... | ... | ... |
| 52 | ... | ... | ... | ... |
| 53 | ... | ... | ... | ... |
| 54 | ... | ... | ... | ... |
| 55 | ... | ... | ... | ... |
| 56 | ... | ... | ... | ... |
| 57 | ... | ... | ... | ... |
| 58 | ... | ... | ... | ... |
| 59 | ... | ... | ... | ... |
| 60 | ... | ... | ... | ... |
| 61 | ... | ... | ... | ... |
| 62 | ... | ... | ... | ... |
| 63 | ... | ... | ... | ... |
| 64 | ... | ... | ... | ... |
| 65 | ... | ... | ... | ... |
| 66 | ... | ... | ... | ... |
| 67 | ... | ... | ... | ... |
| 68 | ... | ... | ... | ... |
| 69 | ... | ... | ... | ... |
| 70 | ... | ... | ... | ... |
| 71 | ... | ... | ... | ... |
| 72 | ... | ... | ... | ... |
| 73 | ... | ... | ... | ... |
| 74 | ... | ... | ... | ... |
| 75 | ... | ... | ... | ... |
| 76 | ... | ... | ... | ... |
| 77 | ... | ... | ... | ... |
| 78 | ... | ... | ... | ... |
| 79 | ... | ... | ... | ... |
| 80 | ... | ... | ... | ... |
| 81 | ... | ... | ... | ... |
| 82 | ... | ... | ... | ... |
| 83 | ... | ... | ... | ... |
| 84 | ... | ... | ... | ... |
| 85 | ... | ... | ... | ... |
| 86 | ... | ... | ... | ... |
| 87 | ... | ... | ... | ... |
| 88 | ... | ... | ... | ... |
| 89 | ... | ... | ... | ... |
| 90 | ... | ... | ... | ... |
| 91 | ... | ... | ... | ... |
| 92 | ... | ... | ... | ... |
| 93 | ... | ... | ... | ... |
| 94 | ... | ... | ... | ... |
| 95 | ... | ... | ... | ... |
| 96 | ... | ... | ... | ... |
| 97 | ... | ... | ... | ... |
| 98 | ... | ... | ... | ... |
| 99 | ... | ... | ... | ... |
| 100 | ... | ... | ... | ... |

T.C.L.
THE UNIVERSITY OF SYDNEY
LAING O'Rourke

THE UNIVERSITY OF SYDNEY
Electrical Engineering Building
University in Darlington, NSW 2008

Grading Plan 01
Southern Courtyard

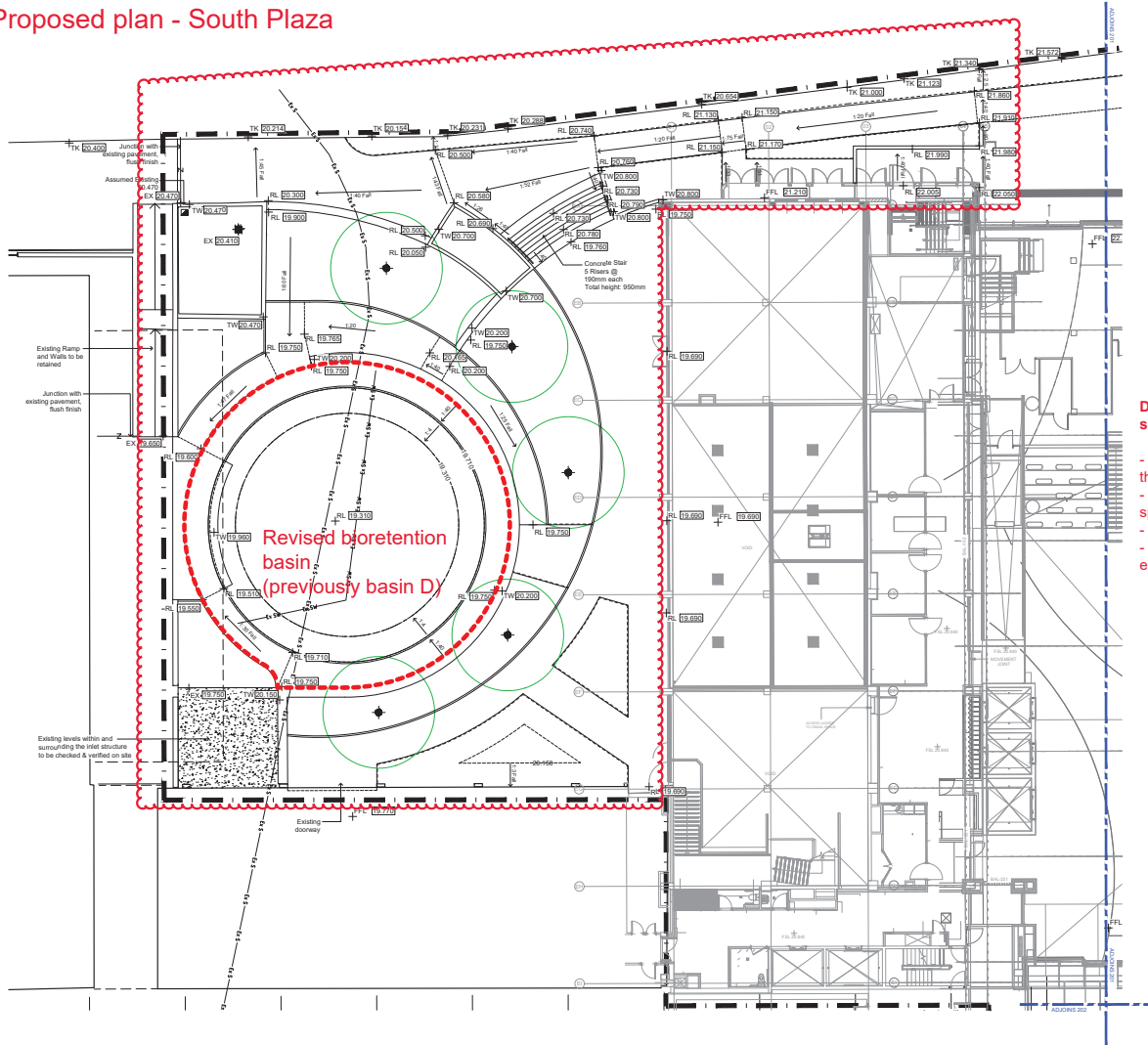
70% DETAILED DESIGN

Project Details:

| | | | |
|-------------------|----------------------------------|-------------------|--------------------------|
| Project Name: | SSDA approved plan - South Plaza | Client: | THE UNIVERSITY OF SYDNEY |
| Project Number: | SSDA-01 | Project Manager: | ... |
| Project Location: | ... | Project Engineer: | ... |
| Project Status: | 70% DETAILED DESIGN | Project Date: | 10/01/2020 |

333-TCL-LAS-ORG-00200






Proposed plan - South Plaza



Revised bioretention basin
(previously basin D)

LEGEND:

Extent of Works
0-100%
 100-150%
 150-200%

- EX  Existing Level (EX)
 To be retained
 + RL  New Finished Surface Level
 + TK  Existing Top of Kerb Level
 + TOW  Top of Wall (TOW)
 + TE  Top of Edging
 Finished Level (TE)
 TE 22-300
 ← 1.21 Fall (ex) Existing Fall (ex)
 To be retained.
 Review onsite with the Civil Engineer & Superintendent prior to construction.
 ← 1.21 Fall Proposed Gradient / Fall
 UP Step Up Surface (Start)
 Z Flush Surface

NOTE:

- All proposed levels are to be marked up by Contractor & approved by Landscape Architect prior to construction.
- All existing & proposed levels are to be reviewed onsite by Contractor & notify the consultant team with any discrepancies prior to construction.
- All civil stormwater pits, grates & conduits refer to Civil Engineer's documentation.
- All service pits, grates & conduits refer to Service Engineer's documentation.
- Drainage inspection location refer to Hydraulic Engineer's documentation.

Design changes from SSDA scheme:

- Improved connection throughout the landscape
- Defined gathering and meeting spaces
- Porous ground plane
- Improved disabled access experience

[illegible]

Lally O'Rourke
1000 Lakeshore Blvd. W. Suite 1000
Toronto, Ontario M6H 1S5
Tel: 416-593-8888
Fax: 416-593-8889
www.lallyorourke.com

Barrett Group
1000 Lakeshore Blvd. W. Suite 1000
Toronto, Ontario M6H 1S5
Tel: 416-593-8888
Fax: 416-593-8889
www.barrettgroup.com

BSA/BUILD/HVAC
1000 Lakeshore Blvd. W. Suite 1000
Toronto, Ontario M6H 1S5
Tel: 416-593-8888
Fax: 416-593-8889
www.bsa-build-hvac.com

Dowse Australia Pty Ltd
1000 Lakeshore Blvd. W. Suite 1000
Toronto, Ontario M6H 1S5
Tel: 416-593-8888
Fax: 416-593-8889
www.dowse.com.au

General Plumbing Pty Ltd
1000 Lakeshore Blvd. W. Suite 1000
Toronto, Ontario M6H 1S5
Tel: 416-593-8888
Fax: 416-593-8889
www.generalplumbing.com.au

Argent Consulting
1000 Lakeshore Blvd. W. Suite 1000
Toronto, Ontario M6H 1S5
Tel: 416-593-8888
Fax: 416-593-8889
www.argentconsulting.com

Triple M Fax Pty Ltd
1000 Lakeshore Blvd. W. Suite 1000
Toronto, Ontario M6H 1S5
Tel: 416-593-8888
Fax: 416-593-8889
www.triplemfax.com

Stora Watson & Partners
1000 Lakeshore Blvd. W. Suite 1000
Toronto, Ontario M6H 1S5
Tel: 416-593-8888
Fax: 416-593-8889
www.storawatson.com

Code Performance
1000 Lakeshore Blvd. W. Suite 1000
Toronto, Ontario M6H 1S5
Tel: 416-593-8888
Fax: 416-593-8889
www.codeperformance.com

TCL Design
1000 Lakeshore Blvd. W. Suite 1000
Toronto, Ontario M6H 1S5
Tel: 416-593-8888
Fax: 416-593-8889
www.tcldesign.com

OTA Consultants
1000 Lakeshore Blvd. W. Suite 1000
Toronto, Ontario M6H 1S5
Tel: 416-593-8888
Fax: 416-593-8889
www.otaconsultants.com

Hoshide Pty Limited
1000 Lakeshore Blvd. W. Suite 1000
Toronto, Ontario M6H 1S5
Tel: 416-593-8888
Fax: 416-593-8889
www.hoshide.com.au

JAF Freeman Associates
1000 Lakeshore Blvd. W. Suite 1000
Toronto, Ontario M6H 1S5
Tel: 416-593-8888
Fax: 416-593-8889
www.jafreeman.com

Laurit Consulting Engineers
1000 Lakeshore Blvd. W. Suite 1000
Toronto, Ontario M6H 1S5
Tel: 416-593-8888
Fax: 416-593-8889
www.lauritconsulting.com

THE UNIVERSITY OF
SYDNEY ETP STAGE 1
Electrical Engineering Building
University in Darlington, NSW 2008

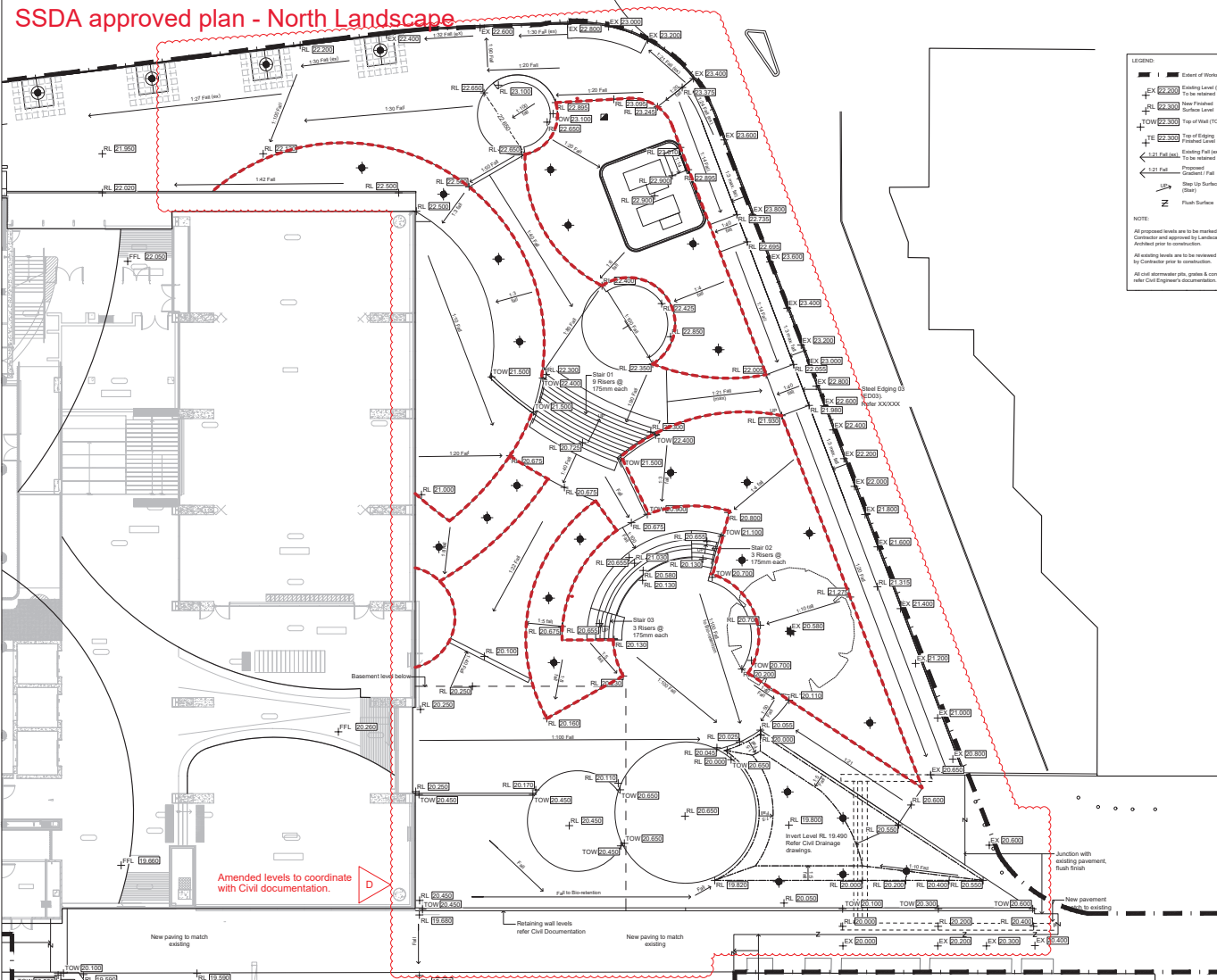
Drawing Title
Grading Plan 01
Southern Courtyard

FOR CONSTRUCTION

| | | | |
|--------------------|-----------|-----------|---|
| Project Number: | 210702-00 | Drawn: | SS / SA |
| Co-ordinated: | SS | Scale: | 1 : 100 @ B1 |
| Project Architect: | TCL | Date: | 20/07/2020 |
| Project Director: | SS | Revision: | C2.3 |
| Drawing Number: | North: | |  |
| K33-TCL-DRG-00200 | | | |



SSDA approved plan - North Landscape



LEGEND

- Extent of Works
- RL 62.200 Existing Level (RL) To be retained
- RL 62.300 New Proposed Surface Level
- TOW 62.300 Top of Wall (TOW) To be retained
- RL 62.300 Top of Edging (To be retained)
- 1.2m Fall Existing Fall (m) To be retained
- 1.2m Fall Proposed Gradient Fall
- 1.2m Fall Step Up Surface (m)
- Flush Surface

NOTE:

- All proposed levels are to be marked up by Contractor and approved by Landscape Architect prior to construction.
- All existing levels are to be retained unless by Contractor prior to construction.
- All civil elevations etc. grades & contours refer Civil Engineer's documentation.

APPENDIX 1 - LIST OF SUBMITTALS

| Item | Description | Submitted | Approved |
|------|--------------------------------------|-----------|----------|
| 1 | Grading Plan (02) Northern Courtyard | | |
| 2 | Grading Plan (03) Southern Courtyard | | |
| 3 | Grading Plan (04) Central Courtyard | | |
| 4 | Grading Plan (05) Eastern Courtyard | | |
| 5 | Grading Plan (06) Western Courtyard | | |
| 6 | Grading Plan (07) Central Courtyard | | |
| 7 | Grading Plan (08) Eastern Courtyard | | |
| 8 | Grading Plan (09) Western Courtyard | | |
| 9 | Grading Plan (10) Central Courtyard | | |
| 10 | Grading Plan (11) Eastern Courtyard | | |
| 11 | Grading Plan (12) Western Courtyard | | |
| 12 | Grading Plan (13) Central Courtyard | | |
| 13 | Grading Plan (14) Eastern Courtyard | | |
| 14 | Grading Plan (15) Western Courtyard | | |
| 15 | Grading Plan (16) Central Courtyard | | |
| 16 | Grading Plan (17) Eastern Courtyard | | |
| 17 | Grading Plan (18) Western Courtyard | | |
| 18 | Grading Plan (19) Central Courtyard | | |
| 19 | Grading Plan (20) Eastern Courtyard | | |
| 20 | Grading Plan (21) Western Courtyard | | |
| 21 | Grading Plan (22) Central Courtyard | | |
| 22 | Grading Plan (23) Eastern Courtyard | | |
| 23 | Grading Plan (24) Western Courtyard | | |
| 24 | Grading Plan (25) Central Courtyard | | |
| 25 | Grading Plan (26) Eastern Courtyard | | |
| 26 | Grading Plan (27) Western Courtyard | | |
| 27 | Grading Plan (28) Central Courtyard | | |
| 28 | Grading Plan (29) Eastern Courtyard | | |
| 29 | Grading Plan (30) Western Courtyard | | |
| 30 | Grading Plan (31) Central Courtyard | | |
| 31 | Grading Plan (32) Eastern Courtyard | | |
| 32 | Grading Plan (33) Western Courtyard | | |
| 33 | Grading Plan (34) Central Courtyard | | |
| 34 | Grading Plan (35) Eastern Courtyard | | |
| 35 | Grading Plan (36) Western Courtyard | | |
| 36 | Grading Plan (37) Central Courtyard | | |
| 37 | Grading Plan (38) Eastern Courtyard | | |
| 38 | Grading Plan (39) Western Courtyard | | |
| 39 | Grading Plan (40) Central Courtyard | | |
| 40 | Grading Plan (41) Eastern Courtyard | | |
| 41 | Grading Plan (42) Western Courtyard | | |
| 42 | Grading Plan (43) Central Courtyard | | |
| 43 | Grading Plan (44) Eastern Courtyard | | |
| 44 | Grading Plan (45) Western Courtyard | | |
| 45 | Grading Plan (46) Central Courtyard | | |
| 46 | Grading Plan (47) Eastern Courtyard | | |
| 47 | Grading Plan (48) Western Courtyard | | |
| 48 | Grading Plan (49) Central Courtyard | | |
| 49 | Grading Plan (50) Eastern Courtyard | | |
| 50 | Grading Plan (51) Western Courtyard | | |
| 51 | Grading Plan (52) Central Courtyard | | |
| 52 | Grading Plan (53) Eastern Courtyard | | |
| 53 | Grading Plan (54) Western Courtyard | | |
| 54 | Grading Plan (55) Central Courtyard | | |
| 55 | Grading Plan (56) Eastern Courtyard | | |
| 56 | Grading Plan (57) Western Courtyard | | |
| 57 | Grading Plan (58) Central Courtyard | | |
| 58 | Grading Plan (59) Eastern Courtyard | | |
| 59 | Grading Plan (60) Western Courtyard | | |
| 60 | Grading Plan (61) Central Courtyard | | |
| 61 | Grading Plan (62) Eastern Courtyard | | |
| 62 | Grading Plan (63) Western Courtyard | | |
| 63 | Grading Plan (64) Central Courtyard | | |
| 64 | Grading Plan (65) Eastern Courtyard | | |
| 65 | Grading Plan (66) Western Courtyard | | |
| 66 | Grading Plan (67) Central Courtyard | | |
| 67 | Grading Plan (68) Eastern Courtyard | | |
| 68 | Grading Plan (69) Western Courtyard | | |
| 69 | Grading Plan (70) Central Courtyard | | |
| 70 | Grading Plan (71) Eastern Courtyard | | |
| 71 | Grading Plan (72) Western Courtyard | | |
| 72 | Grading Plan (73) Central Courtyard | | |
| 73 | Grading Plan (74) Eastern Courtyard | | |
| 74 | Grading Plan (75) Western Courtyard | | |
| 75 | Grading Plan (76) Central Courtyard | | |
| 76 | Grading Plan (77) Eastern Courtyard | | |
| 77 | Grading Plan (78) Western Courtyard | | |
| 78 | Grading Plan (79) Central Courtyard | | |
| 79 | Grading Plan (80) Eastern Courtyard | | |
| 80 | Grading Plan (81) Western Courtyard | | |
| 81 | Grading Plan (82) Central Courtyard | | |
| 82 | Grading Plan (83) Eastern Courtyard | | |
| 83 | Grading Plan (84) Western Courtyard | | |
| 84 | Grading Plan (85) Central Courtyard | | |
| 85 | Grading Plan (86) Eastern Courtyard | | |
| 86 | Grading Plan (87) Western Courtyard | | |
| 87 | Grading Plan (88) Central Courtyard | | |
| 88 | Grading Plan (89) Eastern Courtyard | | |
| 89 | Grading Plan (90) Western Courtyard | | |
| 90 | Grading Plan (91) Central Courtyard | | |
| 91 | Grading Plan (92) Eastern Courtyard | | |
| 92 | Grading Plan (93) Western Courtyard | | |
| 93 | Grading Plan (94) Central Courtyard | | |
| 94 | Grading Plan (95) Eastern Courtyard | | |
| 95 | Grading Plan (96) Western Courtyard | | |
| 96 | Grading Plan (97) Central Courtyard | | |
| 97 | Grading Plan (98) Eastern Courtyard | | |
| 98 | Grading Plan (99) Western Courtyard | | |
| 99 | Grading Plan (100) Central Courtyard | | |

THE UNIVERSITY OF SYDNEY

LAING O'Rourke

SSA | BUILD | HVAC

Control Plumbing Pty Ltd

Travis M Fox Pty Ltd

Ben & Watson & Partners

Code Performance

TCL Design

OTA Consultants

Rehab Pty Limited

JPF Freeman Associates

Liquid Consulting Engineers

THE UNIVERSITY OF SYDNEY ETP STAGE 1

Electrical Engineering Building

University of Sydney, NSW 2008

Grading Plan (02) Northern Courtyard

70% DETAILED DESIGN

K33-TCL-LAS-GRD-0001

Proposed plan - North Landscape

Refer Engineer's drawing

LEGEND:

- Extent of Works
- Existing Level (EL)
- New Finished Surface Level
- Existing Top of Road
- Top of Wall (TOW)
- Top of Edge
- Finished Level (FL)
- Existing Path (see)
- Proposed Gravel / Path
- Slope Up Surface (Steep)
- Finish Surface

NOTE:

- All proposed levels are to be marked up by Contractor & approved by Landscape Architect prior to construction.
- All existing & proposed levels are to be reviewed on-site by Contractor & notify the consultant team with any discrepancies prior to construction.
- All dimensions, girths, gables & contours refer to Surveyor's Documentation.
- All service pits, gables & contours refer to Surveyor's Documentation.
- Drainage inspection locations refer to Hydraulic Engineer's Documentation.

Design changes from SSD scheme:

- Improved way finding.
- 3 main spines
- Defined gathering and meeting spaces
- Increased green space, encouraging more planting & paving
- Simplified levels
- Improved disabled access experience

- Improved way finding.
- 3 main spines
- Defined gathering and meeting spaces
- Increased green space, encouraging more planting and less paving
- Simplified levels
- Improved disabled access experience

[illegible]

100 Goulter Street
Auckland, N.Z. 10102, Australia
T +61 8 8223 7333
<http://www.tcl.net.au/>

T.C.L.
TELECOMMUNICATIONS CORPORATION LIMITED

LAING O'Rourke



THE UNIVERSITY OF SYDNEY

Laing O'Rourke
Level 4, Innovation Place, 130 Arthur Street, North Sydney NSW 2060

Level 6, 37 York Street Sydney NSW 2000
T +61 2 8267 8800 www.bonacgroup.com
MECHANICAL ENGINEERS
BSA | BUILD | HVAC

Stowe Australia Pty Ltd
PO Box 8085, Silverdale NSW 2128
T +612 8828 2111 www.stoweaustralia.com.au
HYDRAULIC ENGINEERS

Argent Consulting
231 Miller St, North Sydney NSW 2060
T +61 2 95237100 www.argentconsulting.com

Steve Watson & Partners
Level 17, 430 Kent Street, Sydney NSW 2000

LANDCAPA ARCHITECTS

GTA Consultants
Level 8, 10 Help Street, Chatterbox NSW 2087
T +61 2 8558 5800 www.gta.com.au/home
REGULATED GAS SYSTEMS ENGINEERS

Jeff Freeman Associates
PO Box 683 Bundanah North 2076
T. 481.6 1331 8791

Level 2/13-14, Ropers St, Chippendale NSW 2158
T +61 6 3236 0000 www.bushfiremfg.com.au

THE UNIVERSITY OF
SYDNEY ETP STAGE 1

| |
|------------------------------------|
| University in Darlington, NSW 2008 |
| Drawing Title |

Northern Courtyard

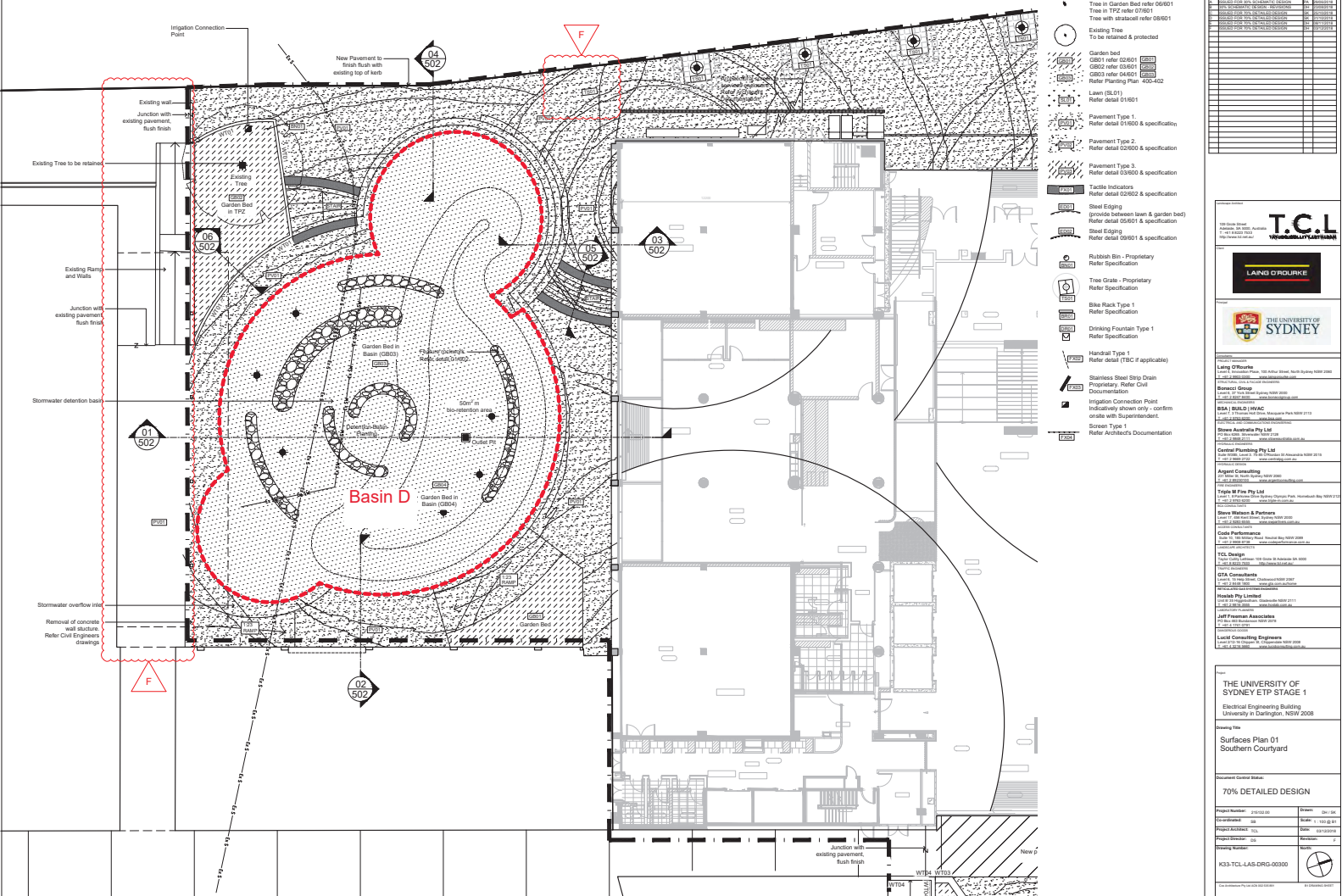
FOR CONSTRUCTION

| | | | |
|--------------------|-----|-----------|------------|
| Project Architect: | TCL | Date: | 25/07/2020 |
| Project Director: | | Revision: | |

| | |
|-------------------|---|
| K33-TCL-DRG-00201 |  |
|-------------------|---|

| | |
|--|--|
| | |
|--|--|

SSDA approved plan - South Plaza



[illegible]

Extent of Works
Confirm with Project Manager

New Advanced Tree
Planting in Garden bed over 07601
Tree in Grass (PV02) over 08001
Tree in Lawn (SL11) over 08001

New Tree T1
Tree in Eastern Cynaroid Garden bed (0250)

Ending Tree
To be retained & protected

Planting Garden Bed (GB01) over 02601
Planting Plans over drawings 400-402

Garden Bed in TPZ (GB02)
Garden Bed in 0301

Blue-retention Garden Bed (GB03)
Garden Bed (04002)

Planting Garden Bed (GB04)
Garden bed 11901

Lawn (SL01)
Lawn over 01601

Lawn on Concrete Slab (SL02)
Lawn over 10501

Pavement Type 1
Pavement Type 01600 & Subsoil

Pavement Type 2 - Compacted Gravel
Pavement Type 02500 & Subsoil

Pavement Type 3 - on Concrete Slab
Pavement Type 03500 & Subsoil

Concrete Edge (ED01)
between (GB01 & PV02)
between (GB02 & GB03)
Steel Edge (ED01)
between Lawn & Garden bed
between (GB01 & GB02)

Steel Edge (ED02)
between Lawn & Garden bed
between (GB01 & GB02)

Blue Retain T1
Install to Manufacturer's details
Refer Specification

Grass Fertiliser
Refer 11600 & 03001

Kiosk Service Enclosure Fence
Refer Architect's Documentation

Intigation Connection
Install existing system only - confirm status with Superintendent

Rooftop Drainage Inspection Plan
Refer Hydraulic Engineer's Documentation & confirm status with Superintendent

NOTE:

All works to be marked up by Contractor & approved by Landscape Architects prior to construction.

Confirm status & finished levels of all new retaining walls, steel edging, slabs, lawn & seats on-site with Landscape Architect & Civil Engineer prior to construction.

Confirm existing finished levels to be retained with the Landscape Architect & Civil Engineer prior to construction.

All garden beds, tree planting & lawn to be irrigated. Irrigation system to be designed & constructed after specification. Contractor to provide construction drawings for approval by the client.

Tree planting - Contractor to ensure all new trees are planted from any existing and/or new underground service pipes, etc. Confirms with Superintendent prior to installation.

Contractor to provide shop drawings for T030 steel edging, steel slabs, lawn & seats, retaining levels & fixing details for approval by T01, BCLs prior to construction.

All existing & proposed service pipes & conduits refer Civil & Engineering's drawings.

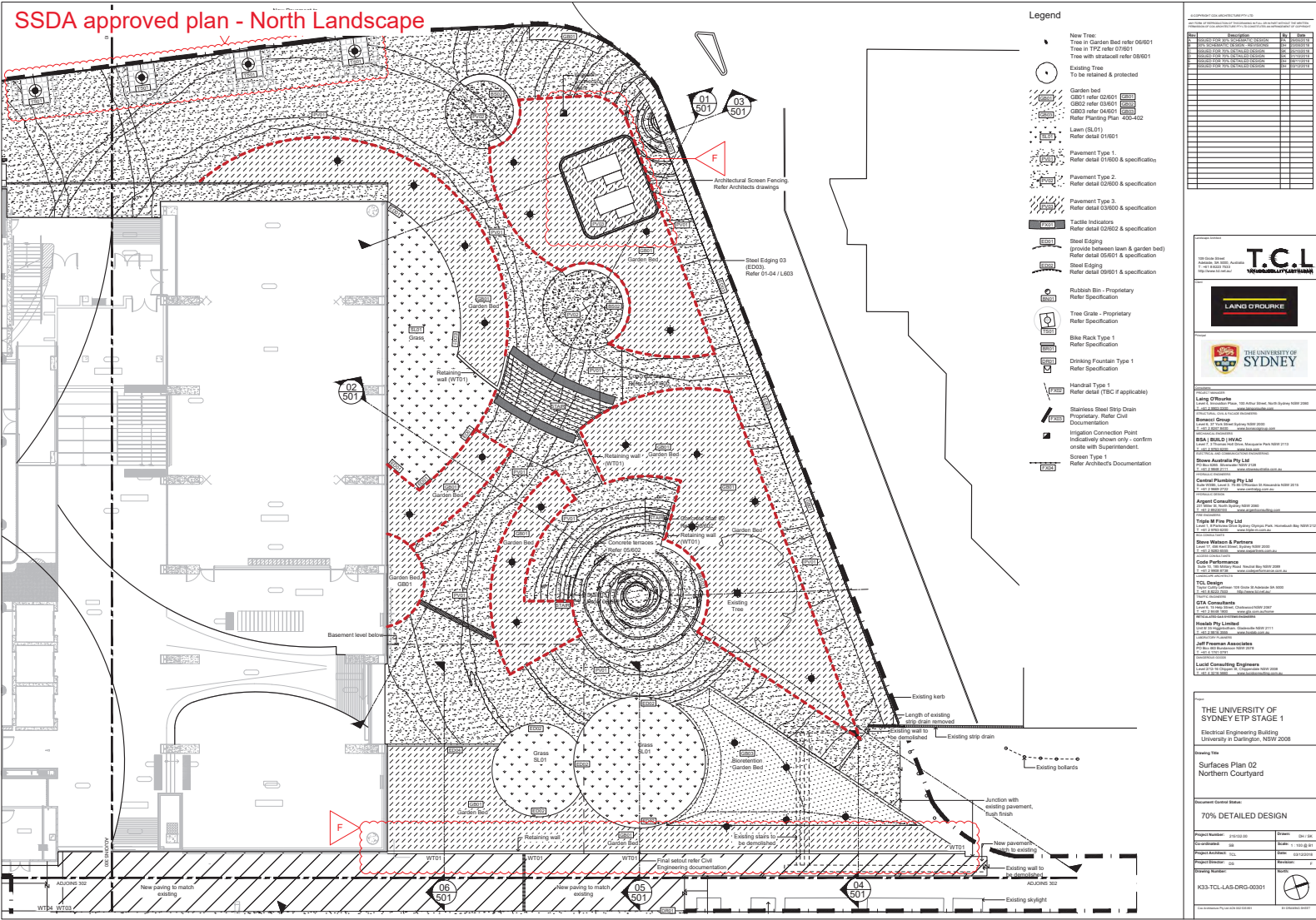
| Project Details | | Client Details | |
|-----------------|---------------------|----------------|-----------------------|
| Item | Description | Item | Description |
| 1 | Project Name | 1 | Client Name |
| 2 | Project Address | 2 | Client Contact Person |
| 3 | Project Reference | 3 | Client Phone |
| 4 | Project Manager | 4 | Client Email |
| 5 | Project Start Date | 5 | Client Website |
| 6 | Project End Date | 6 | Client Logo |
| 7 | Project Status | 7 | Client Notes |
| 8 | Project Budget | 8 | Client Comments |
| 9 | Project Location | 9 | Client Signature |
| 10 | Project Description | 10 | Client Stamp |
| 11 | Project Details | 11 | Client Address |
| 12 | Project Address | 12 | Client City |
| 13 | Project Reference | 13 | Client State |
| 14 | Project Manager | 14 | Client Postcode |
| 15 | Project Start Date | 15 | Client Country |
| 16 | Project End Date | 16 | Client Email |
| 17 | Project Status | 17 | Client Phone |
| 18 | Project Budget | 18 | Client Website |
| 19 | Project Location | 19 | Client Logo |
| 20 | Project Description | 20 | Client Notes |
| 21 | Project Details | 21 | Client Stamp |
| 22 | Project Address | 22 | Client Address |
| 23 | Project Reference | 23 | Client City |
| 24 | Project Manager | 24 | Client State |
| 25 | Project Start Date | 25 | Client Postcode |
| 26 | Project End Date | 26 | Client Country |
| 27 | Project Status | 27 | Client Email |
| 28 | Project Budget | 28 | Client Phone |
| 29 | Project Location | 29 | Client Website |
| 30 | Project Description | 30 | Client Logo |
| 31 | Project Details | 31 | Client Notes |
| 32 | Project Address | 32 | Client Stamp |
| 33 | Project Reference | 33 | Client Address |
| 34 | Project Manager | 34 | Client City |
| 35 | Project Start Date | 35 | Client State |
| 36 | Project End Date | 36 | Client Postcode |
| 37 | Project Status | 37 | Client Country |
| 38 | Project Budget | 38 | Client Email |
| 39 | Project Location | 39 | Client Phone |
| 40 | Project Description | 40 | Client Website |
| 41 | Project Details | 41 | Client Logo |
| 42 | Project Address | 42 | Client Notes |
| 43 | Project Reference | 43 | Client Stamp |
| 44 | Project Manager | 44 | Client Address |
| 45 | Project Start Date | 45 | Client City |
| 46 | Project End Date | 46 | Client State |
| 47 | Project Status | 47 | Client Postcode |
| 48 | Project Budget | 48 | Client Country |
| 49 | Project Location | 49 | Client Email |
| 50 | Project Description | 50 | Client Phone |
| 51 | Project Details | 51 | Client Website |
| 52 | Project Address | 52 | Client Logo |
| 53 | Project Reference | 53 | Client Notes |
| 54 | Project Manager | 54 | Client Stamp |
| 55 | Project Start Date | 55 | Client Address |
| 56 | Project End Date | 56 | Client City |
| 57 | Project Status | 57 | Client State |
| 58 | Project Budget | 58 | Client Postcode |
| 59 | Project Location | 59 | Client Country |
| 60 | Project Description | 60 | Client Email |
| 61 | Project Details | 61 | Client Phone |
| 62 | Project Address | 62 | Client Website |
| 63 | Project Reference | 63 | Client Logo |
| 64 | Project Manager | 64 | Client Notes |
| 65 | Project Start Date | 65 | Client Stamp |
| 66 | Project End Date | 66 | Client Address |
| 67 | Project Status | 67 | Client City |
| 68 | Project Budget | 68 | Client State |
| 69 | Project Location | 69 | Client Postcode |
| 70 | Project Description | 70 | Client Country |
| 71 | Project Details | 71 | Client Email |
| 72 | Project Address | 72 | Client Phone |
| 73 | Project Reference | 73 | Client Website |
| 74 | Project Manager | 74 | Client Logo |
| 75 | Project Start Date | 75 | Client Notes |
| 76 | Project End Date | 76 | Client Stamp |
| 77 | Project Status | 77 | Client Address |
| 78 | Project Budget | 78 | Client City |
| 79 | Project Location | 79 | Client State |
| 80 | Project Description | 80 | Client Postcode |
| 81 | Project Details | 81 | Client Country |
| 82 | Project Address | 82 | Client Email |
| 83 | Project Reference | 83 | Client Phone |
| 84 | Project Manager | 84 | Client Website |
| 85 | Project Start Date | 85 | Client Logo |
| 86 | Project End Date | 86 | Client Notes |
| 87 | Project Status | 87 | Client Stamp |
| 88 | Project Budget | 88 | Client Address |
| 89 | Project Location | 89 | Client City |
| 90 | Project Description | 90 | Client State |
| 91 | Project Details | 91 | Client Postcode |
| 92 | Project Address | 92 | Client Country |
| 93 | Project Reference | 93 | Client Email |
| 94 | Project Manager | 94 | Client Phone |
| 95 | Project Start Date | 95 | Client Website |
| 96 | Project End Date | 96 | Client Logo |
| 97 | Project Status | 97 | Client Notes |
| 98 | Project Budget | 98 | Client Stamp |
| 99 | Project Location | 99 | Client Address |
| 100 | Project Description | 100 | Client City |



THE UNIVERSITY OF SYDNEY

LONG ORDER

SSDA approved plan - North Landscape



Proposed plan - North Landscape

NOTE:

- 1. All setbacks to be marked up by Contractor & approved by Landscape Architects prior to construction.
- 2. Confirm status & finished levels of all of new retaining walls, raised edging, paving, garden beds & seats, orals with Landscape Architect & Civil Engineer prior to construction.
- 3. Confirm existing finished levels to be retained with the Landscape Architect & Civil Engineer prior to construction.
- 4. All garden beds, tree planting & lawn to be irrigated irrigation scope to be design & construct refer specification. Contractor to provide construction drawings for approval by the client.
- 5. Tree planting - Contractor to ensure all new trees are planted away from any existing and/or new underground service pits, conduits etc. Confirm with Superintendent prior to installation.
- 6. Contractor to provide shop drawings for SS02 steel edging, stair handrails, including setbacks, levels & fixings details for approval by TCC & Bencard prior to fabrication & installation.
- 7. All existing & proposed service pits & conduits refer CA & Services Engineer's drawings.

Legend

- 1. Extent of Works Confirm with Project Manager
- 2. New Advanced Tree Tree in Garden Bed refer 07001 Tree in Ground (P102) refer 08001 Tree in Lawn (SL01) refer 08001
- 3. New Tree T1 Tree in Eastern Courtyard Rooftop Garden Bed refer 02000
- 4. Existing Tree To be retained & protected
- 5. Garden bed (G001) refer 02001 Planting Plans refer drawings 400-402
- 6. Garden bed in TP2 (G002) Refer detail 03001
- 7. Bio-retention Garden Bed (G003) Refer detail 04001
- 8. Rooftop Garden Bed (G004) Refer detail 11001
- 9. Lawn (SL01) Refer detail 01001
- 10. Lawn on Concrete Slab (SL02) Refer detail 10001
- 11. Pavement Type 1 Refer detail 01000 & Specification
- 12. Pavement Type 2 - Compacted Gravel Refer detail 02000 & Specification
- 13. Pavement Type 3 - on Concrete Slab Refer detail 03000 & Specification
- 14. Concrete Edging (ED01) between (G001 & P102) Refer detail 04002 & Specification
- 15. Steel Edging (SE01) between Lawn & Garden bed Refer detail 05001 & Specification
- 16. Steel Edging (SE02) between Lawn & Garden bed Refer detail 06001 & Specification
- 17. Steel Rack Type 1 install to Manufacturer's details Refer Specification
- 18. Tanks Refer detail 11000 & Specification
- 19. Kiosk Service Enclosure Fence Refer Architect's Documentation
- 20. Irrigation Connection Point Indistinctly shown only - confirm orals with Superintendent.
- 21. Rooftop Drainage Inspection Point Refer Hydraulic Engineer's Documentation & confirm orals with Superintendent
- 22. Trim back existing strip drain to match new paving alignment. Confirm orals with Superintendent.
- 23. Existing bollards, fence paving to be retained & protected during construction.
- 24. Junction with existing pavement, finish finish, permeable where required.

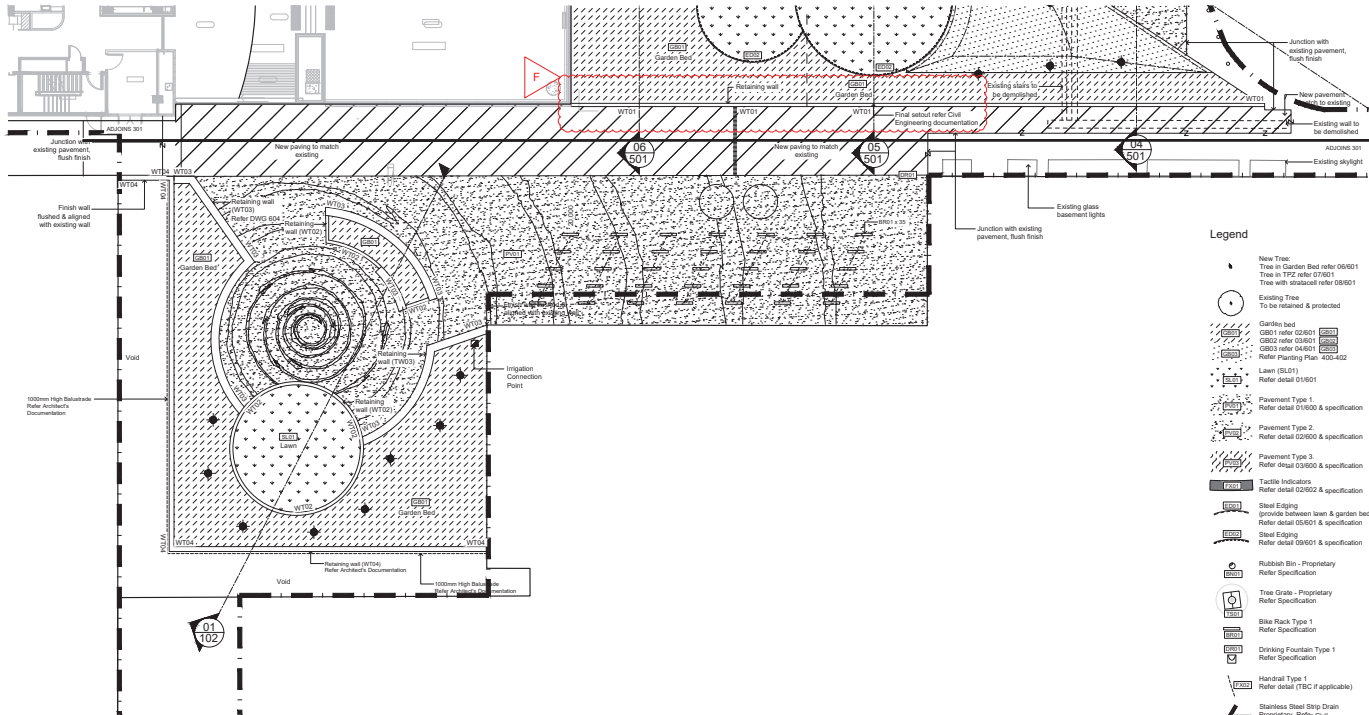
Refer to comments on sheet K33-TCL-DRG-00201 Revision C6

- II All setbacks to be marked up by Contractor & approved by Landscape Architect prior to construction.
- II Confirm setback & finished levels of all new retaining walls, raised edging, paving, garden beds & seats constructed by Landscape Architect & Civil Engineer prior to construction.
- II Confirm existing finished levels to be retained with the Landscape Architect & Civil Engineer prior to construction.
- II All garden beds, tree planting & lawn to be irrigated. Irrigation scope to be design & construct refer specification. Contractor to provide construction Drawings for approval by the client.
- II Tree planting - Contractor to ensure all new trees are planted away from any existing and/or new underground service pits, conduits etc. Confirm with Superintendent prior to installation.
- II Contractor to provide shop drawings for SE02 steel signposts, bollards, including setbacks, levels & fitting details for approval by TCL & Bonacini prior to fabrication & installation.
- II All existing & proposed service pits & conduits refer Civil & Services Engineer's drawings.

| Extent of Works Confirm with Project Manager | |
|---|---|
| | New Advanced Tree Tree in Garden Bed (G7601) Tree in Gavel (PVS2) Refer G8001 Tree in Gavel (PVS2) Refer G8001 |
| | New Tree Type Tree in Eastern Courtyard Ground Refer Detail G2500 |
| | Ending Tree To be retained & protected |
| | Garden Bed (G801) Refer G2601 Planting Plans refer drawings 400-402 |
| | Garden Bed in TPZ (G802) Refer Detail G3601 |
| | Roof-Planting Garden Bed (G803) Refer Detail G4001 |
| | Roof-Planting Garden Bed (G804) Refer Detail G1801 |
| | Lawn (SL01) Refer Detail G1601 |
| | Lawn on Concrete Slab (SL02) Refer Detail G2601 |
| | Pavement Type 1 Refer Detail G1600 & Specification |
| | Pavement Type 2 - Compacted Gravel Refer Detail G3600 & Specification |
| | Pavement Type 3 - on Concrete Slab Refer Detail G3600 & Specification |
| | Concrete Edge (E001) Between G801 & PVS2 Refer Detail G5602 & Specification |
| | Concrete Edge (E002) Between Lawn & Garden Bed Refer Detail G5601 & Specification |
| | Concrete Edge (E003) Between Lawn & Garden Bed Refer Detail G5605 & Specification |
| | Black Rick Type 1 Install to Manufacturer's details Refer Specification |
| | Black Rick Type 2 Refer Detail G1800 & Specification |
| | Knock Service Enclosure Fence Refer Architect's Documentation |
| | Inundation Connection Point Indicatively shown only - confirm orders with Superintendent |
| | Runoff Drainage Installation Point Refer Hydraulic Engineer's Documentation & confirm orders with Superintendent |

| Page | Page No. | Page Title | Page Date |
|------|----------|------------|-----------|
| 001 | 001 | 001 | 001 |
| 002 | 002 | 002 | 002 |
| 003 | 003 | 003 | 003 |
| 004 | 004 | 004 | 004 |
| 005 | 005 | 005 | 005 |
| 006 | 006 | 006 | 006 |
| 007 | 007 | 007 | 007 |
| 008 | 008 | 008 | 008 |
| 009 | 009 | 009 | 009 |
| 010 | 010 | 010 | 010 |
| 011 | 011 | 011 | 011 |
| 012 | 012 | 012 | 012 |
| 013 | 013 | 013 | 013 |
| 014 | 014 | 014 | 014 |
| 015 | 015 | 015 | 015 |
| 016 | 016 | 016 | 016 |
| 017 | 017 | 017 | 017 |
| 018 | 018 | 018 | 018 |
| 019 | 019 | 019 | 019 |
| 020 | 020 | 020 | 020 |
| 021 | 021 | 021 | 021 |
| 022 | 022 | 022 | 022 |
| 023 | 023 | 023 | 023 |
| 024 | 024 | 024 | 024 |
| 025 | 025 | 025 | 025 |
| 026 | 026 | 026 | 026 |
| 027 | 027 | 027 | 027 |
| 028 | 028 | 028 | 028 |
| 029 | 029 | 029 | 029 |
| 030 | 030 | 030 | 030 |
| 031 | 031 | 031 | 031 |
| 032 | 032 | 032 | 032 |
| 033 | 033 | 033 | 033 |
| 034 | 034 | 034 | 034 |
| 035 | 035 | 035 | 035 |
| 036 | 036 | 036 | 036 |
| 037 | 037 | 037 | 037 |
| 038 | 038 | 038 | 038 |
| 039 | 039 | 039 | 039 |
| 040 | 040 | 040 | 040 |
| 041 | 041 | 041 | 041 |
| 042 | 042 | 042 | 042 |
| 043 | 043 | 043 | 043 |
| 044 | 044 | 044 | 044 |
| 045 | 045 | 045 | 045 |
| 046 | 046 | 046 | 046 |
| 047 | 047 | 047 | 047 |
| 048 | 048 | 048 | 048 |
| 049 | 049 | 049 | 049 |
| 050 | 050 | 050 | 050 |
| 051 | 051 | 051 | 051 |
| 052 | 052 | 052 | 052 |
| 053 | 053 | 053 | 053 |
| 054 | 054 | 054 | 054 |
| 055 | 055 | 055 | 055 |
| 056 | 056 | 056 | 056 |
| 057 | 057 | 057 | 057 |
| 058 | 058 | 058 | 058 |
| 059 | 059 | 059 | 059 |
| 060 | 060 | 060 | 060 |
| 061 | 061 | 061 | 061 |
| 062 | 062 | 062 | 062 |
| 063 | 063 | 063 | 063 |
| 064 | 064 | 064 | 064 |
| 065 | 065 | 065 | 065 |
| 066 | 066 | 066 | 066 |
| 067 | 067 | 067 | 067 |
| 068 | 068 | 068 | 068 |
| 069 | 069 | 069 | 069 |
| 070 | 070 | 070 | 070 |
| 071 | 071 | 071 | 071 |
| 072 | 072 | 072 | 072 |
| 073 | 073 | 073 | 073 |
| 074 | 074 | 074 | 074 |
| 075 | 075 | 075 | 075 |
| 076 | 076 | 076 | 076 |
| 077 | 077 | 077 | 077 |
| 078 | 078 | 078 | 078 |
| 079 | 079 | 079 | 079 |
| 080 | 080 | 080 | 080 |
| 081 | 081 | 081 | 081 |
| 082 | 082 | 082 | 082 |
| 083 | 083 | 083 | 083 |
| 084 | 084 | 084 | 084 |
| 085 | 085 | 085 | 085 |
| 086 | 086 | 086 | 086 |
| 087 | 087 | 087 | 087 |
| 088 | 088 | 088 | 088 |
| 089 | 089 | 089 | 089 |
| 090 | 090 | 090 | 090 |
| 091 | 091 | 091 | 091 |
| 092 | 092 | 092 | 092 |
| 093 | 093 | 093 | 093 |
| 094 | 09 | | |

SSDA approved plan - East Landscape



- Legend

| | |
|------------------------------------|-------|
| Time to failure | |
| Time to first repair order 06/01 | 0.000 |
| Time in TYP2 after 07/01 | 0.000 |
| Time with first repair order 06/01 | 0.000 |
| To be initiated & protected | |
| Gardies bed | |
| GE01 Ref order 02/01 | 0.000 |
| GE02 Ref order 02/01 | 0.000 |
| GE03 Ref order 04/01 | 0.000 |
| GE04 Ref order 04/01 | 0.000 |
| GE05 Ref order 04/01 | 0.000 |
| GE06 Ref order 04/01 | 0.000 |
| GE07 Ref order 04/01 | 0.000 |
| GE08 Ref order 04/01 | 0.000 |
| GE09 Ref order 04/01 | 0.000 |
| GE10 Ref order 04/01 | 0.000 |
| GE11 Ref order 04/01 | 0.000 |
| GE12 Ref order 04/01 | 0.000 |
| GE13 Ref order 04/01 | 0.000 |
| GE14 Ref order 04/01 | 0.000 |
| GE15 Ref order 04/01 | 0.000 |
| GE16 Ref order 04/01 | 0.000 |
| GE17 Ref order 04/01 | 0.000 |
| GE18 Ref order 04/01 | 0.000 |
| GE19 Ref order 04/01 | 0.000 |
| GE20 Ref order 04/01 | 0.000 |
| GE21 Ref order 04/01 | 0.000 |
| GE22 Ref order 04/01 | 0.000 |
| GE23 Ref order 04/01 | 0.000 |
| GE24 Ref order 04/01 | 0.000 |
| GE25 Ref order 04/01 | 0.000 |
| GE26 Ref order 04/01 | 0.000 |
| GE27 Ref order 04/01 | 0.000 |
| GE28 Ref order 04/01 | 0.000 |
| GE29 Ref order 04/01 | 0.000 |
| GE30 Ref order 04/01 | 0.000 |
| GE31 Ref order 04/01 | 0.000 |
| GE32 Ref order 04/01 | 0.000 |
| GE33 Ref order 04/01 | 0.000 |
| GE34 Ref order 04/01 | 0.000 |
| GE35 Ref order 04/01 | 0.000 |
| GE36 Ref order 04/01 | 0.000 |
| GE37 Ref order 04/01 | 0.000 |
| GE38 Ref order 04/01 | 0.000 |
| GE39 Ref order 04/01 | 0.000 |
| GE40 Ref order 04/01 | 0.000 |
| GE41 Ref order 04/01 | 0.000 |
| GE42 Ref order 04/01 | 0.000 |
| GE43 Ref order 04/01 | 0.000 |
| GE44 Ref order 04/01 | 0.000 |
| GE45 Ref order 04/01 | 0.000 |
| GE46 Ref order 04/01 | 0.000 |
| GE47 Ref order 04/01 | 0.000 |
| GE48 Ref order 04/01 | 0.000 |
| GE49 Ref order 04/01 | 0.000 |
| GE50 Ref order 04/01 | 0.000 |
| GE51 Ref order 04/01 | 0.000 |
| GE52 Ref order 04/01 | 0.000 |
| GE53 Ref order 04/01 | 0.000 |
| GE54 Ref order 04/01 | 0.000 |
| GE55 Ref order 04/01 | 0.000 |
| GE56 Ref order 04/01 | 0.000 |
| GE57 Ref order 04/01 | 0.000 |
| GE58 Ref order 04/01 | 0.000 |
| GE59 Ref order 04/01 | 0.000 |
| GE60 Ref order 04/01 | 0.000 |
| GE61 Ref order 04/01 | 0.000 |
| GE62 Ref order 04/01 | 0.000 |
| GE63 Ref order 04/01 | 0.000 |
| GE64 Ref order 04/01 | 0.000 |
| GE65 Ref order 04/01 | 0.000 |
| GE66 Ref order 04/01 | 0.000 |
| GE67 Ref order 04/01 | 0.000 |
| GE68 Ref order 04/01 | 0.000 |
| GE69 Ref order 04/01 | 0.000 |
| GE70 Ref order 04/01 | 0.000 |
| GE71 Ref order 04/01 | 0.000 |
| GE72 Ref order 04/01 | 0.000 |
| GE73 Ref order 04/01 | 0.000 |
| GE74 Ref order 04/01 | 0.000 |
| GE75 Ref order 04/01 | 0.000 |
| GE76 Ref order 04/01 | 0.000 |
| GE77 Ref order 04/01 | 0.000 |
| GE78 Ref order 04/01 | 0.000 |
| GE79 Ref order 04/01 | 0.000 |
| GE80 Ref order 04/01 | 0.000 |
| GE81 Ref order 04/01 | 0.000 |
| GE82 Ref order 04/01 | 0.000 |
| GE83 Ref order 04/01 | 0.000 |
| GE84 Ref order 04/01 | 0.000 |
| GE85 Ref order 04/01 | 0.000 |
| GE86 Ref order 04/01 | 0.000 |
| GE87 Ref order 04/01 | 0.000 |
| GE88 Ref order 04/01 | 0.000 |
| GE89 Ref order 04/01 | 0.000 |
| GE90 Ref order 04/01 | 0.000 |
| GE91 Ref order 04/01 | 0.000 |
| GE92 Ref order 04/01 | 0.000 |
| GE93 Ref order 04/01 | 0.000 |
| GE94 Ref order 04/01 | 0.000 |
| GE95 Ref order 04/01 | 0.000 |
| GE96 Ref order 04/01 | 0.000 |
| GE97 Ref order 04/01 | 0.000 |
| GE98 Ref order 04/01 | 0.000 |
| GE99 Ref order 04/01 | 0.000 |
| GE100 Ref order 04/01 | 0.000 |
| GE101 Ref order 04/01 | 0.000 |
| GE102 Ref order 04/01 | 0.000 |
| GE103 Ref order 04/01 | 0.000 |
| GE104 Ref order 04/01 | 0.000 |
| GE105 Ref order 04/01 | 0.000 |
| GE106 Ref order 04/01 | 0.000 |
| GE107 Ref order 04/01 | 0.000 |
| GE108 Ref order 04/01 | 0.000 |
| GE109 Ref order 04/01 | 0.000 |
| GE110 Ref order 04/01 | 0.000 |
| GE111 Ref order 04/01 | 0.000 |
| GE | |

| 4-CONSOLIDATED COMPANY/COMPANIES LTD | | | |
|---|--------------------------------------|-----|------------|
| ANY FORMS OF INTERESTS/INVESTMENTS IN OR OBTAINED WITHOUT THE WRITTEN CONSENT OF THE BOARD OF DIRECTORS OF THE COMPANY | | | |
| NAME | DESCRIPTION | SH | DATE |
| A | ISSUED FROM 10% INCREASED DISCOUNT | 250 | 11/02/2018 |
| B | 10% INCREASED DISCOUNT - PROVISIONED | 250 | 11/02/2018 |
| C | ISSUED FROM 10% INCREASED DISCOUNT | 250 | 11/02/2018 |
| D | ISSUED FROM 10% INCREASED DISCOUNT | 250 | 11/02/2018 |
| E | ISSUED FROM 10% INCREASED DISCOUNT | 250 | 11/02/2018 |
| F | ISSUED FROM 10% INCREASED DISCOUNT | 250 | 11/02/2018 |
| G | ISSUED FROM 10% INCREASED DISCOUNT | 250 | 11/02/2018 |
| H | ISSUED FROM 10% INCREASED DISCOUNT | 250 | 11/02/2018 |
| I | ISSUED FROM 10% INCREASED DISCOUNT | 250 | 11/02/2018 |
| J | ISSUED FROM 10% INCREASED DISCOUNT | 250 | 11/02/2018 |
| K | ISSUED FROM 10% INCREASED DISCOUNT | 250 | 11/02/2018 |
| L | ISSUED FROM 10% INCREASED DISCOUNT | 250 | 11/02/2018 |
| M | ISSUED FROM 10% INCREASED DISCOUNT | 250 | 11/02/2018 |
| N | ISSUED FROM 10% INCREASED DISCOUNT | 250 | 11/02/2018 |
| O | ISSUED FROM 10% INCREASED DISCOUNT | 250 | 11/02/2018 |
| P | ISSUED FROM 10% INCREASED DISCOUNT | 250 | 11/02/2018 |
| Q | ISSUED FROM 10% INCREASED DISCOUNT | 250 | 11/02/2018 |
| R | ISSUED FROM 10% INCREASED DISCOUNT | 250 | 11/02/2018 |
| S | ISSUED FROM 10% INCREASED DISCOUNT | 250 | 11/02/2018 |
| T | ISSUED FROM 10% INCREASED DISCOUNT | 250 | 11/02/2018 |
| U | ISSUED FROM 10% INCREASED DISCOUNT | 250 | 11/02/2018 |
| V | ISSUED FROM 10% INCREASED DISCOUNT | 250 | 11/02/2018 |
| W | ISSUED FROM 10% INCREASED DISCOUNT | 250 | 11/02/2018 |
| X | ISSUED FROM 10% INCREASED DISCOUNT | 250 | 11/02/2018 |
| Y | ISSUED FROM 10% INCREASED DISCOUNT | 250 | 11/02/2018 |
| Z | ISSUED FROM 10% INCREASED DISCOUNT | 250 | 11/02/2018 |

| | |
|---|---|
| 150000 Budget 150000 Budget 150000 Budget 150000 Budget 150000 Budget |  |
|  | |
| Project Name: THE UNIVERSITY OF SYDNEY Project Location: 150000 Budget, North Sydney NSW 1500 Project Description: 150000 Budget, North Sydney NSW 1500 Project Status: 150000 Budget, North Sydney NSW 1500 Project Manager: 150000 Budget, North Sydney NSW 1500 Project Contact: 150000 Budget, North Sydney NSW 1500 Project Email: 150000 Budget, North Sydney NSW 1500 Project Phone: 150000 Budget, North Sydney NSW 1500 Project Website: 150000 Budget, North Sydney NSW 1500 Project Address: 150000 Budget, North Sydney NSW 1500 Project Postcode: 150000 Budget, North Sydney NSW 1500 Project Country: 150000 Budget, North Sydney NSW 1500 Project Currency: 150000 Budget, North Sydney NSW 1500 Project Language: 150000 Budget, North Sydney NSW 1500 Project Units: 150000 Budget, North Sydney NSW 1500 Project Timezone: 150000 Budget, North Sydney NSW 1500 Project Calendar: 150000 Budget, North Sydney NSW 1500 Project Start Date: 150000 Budget, North Sydney NSW 1500 Project End Date: 150000 Budget, North Sydney NSW 1500 Project Duration: 150000 Budget, North Sydney NSW 1500 Project Progress: 150000 Budget, North Sydney NSW 1500 Project Risk: 150000 Budget, North Sydney NSW 1500 Project Quality: 150000 Budget, North Sydney NSW 1500 Project Cost: 150000 Budget, North Sydney NSW 1500 Project Revenue: 150000 Budget, North Sydney NSW 1500 Project Profit: 150000 Budget, North Sydney NSW 1500 Project Loss: 150000 Budget, North Sydney NSW 1500 Project Breakdown: 150000 Budget, North Sydney NSW 1500 Project Details: 150000 Budget, North Sydney NSW 1500 Project Notes: 150000 Budget, North Sydney NSW 1500 Project Comments: 150000 Budget, North Sydney NSW 1500 Project History: 150000 Budget, North Sydney NSW 1500 Project Audit: 150000 Budget, North Sydney NSW 1500 Project Review: 150000 Budget, North Sydney NSW 1500 Project Approval: 150000 Budget, North Sydney NSW 1500 Project Sign-off: 150000 Budget, North Sydney NSW 1500 Project Release: 150000 Budget, North Sydney NSW 1500 Project Close: 150000 Budget, North Sydney NSW 1500 Project Archive: 150000 Budget, North Sydney NSW 1500 Project Backup: 150000 Budget, North Sydney NSW 1500 Project Restore: 150000 Budget, North Sydney NSW 1500 Project Delete: 150000 Budget, North Sydney NSW 1500 Project Move: 150000 Budget, North Sydney NSW 1500 Project Copy: 150000 Budget, North Sydney NSW 1500 Project Paste: 150000 Budget, North Sydney NSW 1500 Project Print: 150000 Budget, North Sydney NSW 1500 Project Export: 150000 Budget, North Sydney NSW 1500 Project Import: 150000 Budget, North Sydney NSW 1500 Project Search: 150000 Budget, North Sydney NSW 1500 Project Filter: 150000 Budget, North Sydney NSW 1500 Project Sort: 150000 Budget, North Sydney NSW 1500 Project Group: 150000 Budget, North Sydney NSW 1500 Project Unlink: 150000 Budget, North Sydney NSW 1500 Project Link: 150000 Budget, North Sydney NSW 1500 Project Unhide: 150000 Budget, North Sydney NSW 1500 Project Hide: 150000 Budget, North Sydney NSW 1500 Project Unarchive: 150000 Budget, North Sydney NSW 1500 Project Archive: 150000 Budget, North Sydney NSW 1500 Project Unpublish: 150000 Budget, North Sydney NSW 1500 Project Publish: 150000 Budget, North Sydney NSW 1500 Project Unsubscribe: 150000 Budget, North Sydney NSW 1500 Project Subscribe: 150000 Budget, North Sydney NSW 1500 Project Unfollow: 150000 Budget, North Sydney NSW 1500 Project Follow: 150000 Budget, North Sydney NSW 1500 Project Unshare: 150000 Budget, North Sydney NSW 1500 Project Share: 150000 Budget, North Sydney NSW 1500 Project Uncomment: 150000 Budget, North Sydney NSW 1500 Project Comment: 150000 Budget, North Sydney NSW 1500 Project Unlike: 150000 Budget, North Sydney NSW 1500 Project Like: 150000 Budget, North Sydney NSW 1500 Project Unlove: 150000 Budget, North Sydney NSW 1500 Project Love: 150000 Budget, North Sydney NSW 1500 Project Unwink: 150000 Budget, North Sydney NSW 1500 Project Wink: 150000 Budget, North Sydney NSW 1500 Project Unsmile: 150000 Budget, North Sydney NSW 1500 Project Smile: 150000 Budget, North Sydney NSW 1500 Project Unhappy: 150000 Budget, North Sydney NSW 1500 Project Happy: 150000 Budget, North Sydney NSW 1500 Project Unsurprised: 150000 Budget, North Sydney NSW 1500 Project Surprised: 150000 Budget, North Sydney NSW 1500 Project Unangry: 150000 Budget, North Sydney NSW 1500 Project Angry: 150000 Budget, North Sydney NSW 1500 Project Unexcited: 150000 Budget, North Sydney NSW 1500 Project Excited: 150000 Budget, North Sydney NSW 1500 Project Unbored: 150000 Budget, North Sydney NSW 1500 Project Bored: 150000 Budget, North Sydney NSW 1500 Project Uninterested: 150000 Budget, North Sydney NSW 1500 Project Interested: 150000 Budget, North Sydney NSW 1500 Project Unamused: 150000 Budget, North Sydney NSW 1500 Project Amused: 150000 Budget, North Sydney NSW 1500 Project Unimpressed: 150000 Budget, North Sydney NSW 1500 Project Impressed: 150000 Budget, North Sydney NSW 1500 Project Unamazed: 150000 Budget, North Sydney NSW 1500 Project Amazed: 150000 Budget, North Sydney NSW 1500 Project Unastounded: 150000 Budget, North Sydney NSW 1500 Project Astounded: 150000 Budget, North Sydney NSW 1500 Project Unshocked: 150000 Budget, North Sydney NSW 1500 Project Shocked: 150000 Budget, North Sydney NSW 1500 Project Unhorrified: 150000 Budget, North Sydney NSW 1500 Project Horrified: 150000 Budget, North Sydney NSW 1500 Project Unfrightened: 150000 Budget, North Sydney NSW 1500 Project Frightened: 150000 Budget, North Sydney NSW 1500 Project Unscared: 150000 Budget, North Sydney NSW 1500 Project Scared: 150000 Budget, North Sydney NSW 1500 Project Unnervous: 150000 Budget, North Sydney NSW 1500 Project Nervous: 150000 Budget, North Sydney NSW 1500 Project Unworried: 150000 Budget, North Sydney NSW 1500 Project Worried: 150000 Budget, North Sydney NSW 1500 Project Unconcerned: 150000 Budget, North Sydney NSW 1500 Project Concerned: 150000 Budget, North Sydney NSW 1500 Project Unworried: 150000 Budget, North Sydney NSW 1500 Project Worried: 150000 Budget, North Sydney NSW 1500 Project Unconcerned: 150000 Budget, North Sydney NSW 1500 Project Concerned: 150000 Budget, North Sydney NSW 1500 Project Unworried: 150000 Budget, North Sydney NSW 1500 Project Worried: 150000 Budget, North Sydney NSW 1500 Project Unconcerned: 150000 Budget, North Sydney NSW 1500 Project Concerned: 150000 Budget, North Sydney NSW 1500 Project Unworried: 150000 Budget, North Sydney NSW 1500 Project Worried: 150000 Budget, North Sydney NSW 1500 Project Unconcerned: 150000 Budget, North Sydney NSW 1500 Project Concerned: 150000 Budget, North Sydney NSW 1500 Project Unworried: 150000 Budget, North Sydney NSW 1500 Project Worried: 150000 Budget, North Sydney NSW 1500 Project Unconcerned: 150000 Budget, North Sydney NSW 1500 Project Concerned: 150000 Budget, North Sydney NSW 1500 Project Unworried: 150000 Budget, North Sydney NSW 1500 Project Worried: 150000 Budget, North Sydney NSW 1500 Project Unconcerned: 150000 Budget, North Sydney NSW 1500 Project Concerned: 150000 Budget, North Sydney NSW 1500 Project Unworried: 150000 Budget, North Sydney NSW 1500 | |

Proposed new plant - East Landscaping

Engineering walk awning added to improve user access experience and provide weather protection to building entry and associated bike racks.

For details please refer to the following to drawings sheets
 K33-COX-ARC-DRG-16-20 Rev 2
 K33-COX-ARC-DRG-16-21 Rev 2

Legend

- Extent of Works
Confirm with Project Manager
- New Advanced Tree
Tree in Garden Bed refer 07801
Tree in Grass (P102) refer 08601
Tree in Lawn (SL21) refer 08601
- New Tree T1
Tree in Eastern Courtyard Rooftop
Garden Bed refer 02500
- Existing Tree
To be retained & protected
- Garden Bed (GB01) refer 02801
Planting Lights refer drawings 400-402
- Garden Bed in TYPZ (GB02)
Refer detail 03601
- Bioretention Garden Bed (GB03)
Refer detail 03601
- Rooftop Garden Bed (GB04)
Refer detail 11001
- Lawn (SL01)
Refer detail 01601
- Lawn on Concrete Slab (SL02)
Refer detail 01601

Engineering walk awning added to improve user access experience and provide weather protection to building entry and associated bike racks.
For details please refer to the following to drawings sheets
K33-COX-ARC-DRG-16-20 Rev 2
K33-COX-ARC-DRG-16-21 Rev 2

- NOTE:**
- All setbacks to be marked up by Contractor & approved by Landscape Architects prior to construction.
 - Confirm settolt & finished levels of all new retaining walls, raised edging, paving, garden beds & seats on site. Confirm with Landscape Architect & Civil Engineer prior to construction.
 - Confirm existing finished levels to be retained with the Landscape Architect & Civil Engineer prior to construction.
 - All garden beds, tree planting & lawn to be irrigated. Irrigation system to be design & construct to meet specification. Contractor to provide construction drawings for approval by the client.
 - Tree planting - Contractor to ensure all new trees are planted away from any existing and/or new underground service pits, conduits etc. Confirm with Superintendent prior to installation.
 - Contractor to provide shop drawings for SIEG steel edging, star handrails, including setbacks, levels & fixing details for approval by the Client & Bencose prior to fabrication & installation.
 - All existing & proposed service pits & conduits refer Civil & Services Engineer's drawings.

| Legend | |
|--------|--|
| | Extent of Works |
| | Consent with Project Manager |
| | New Advanced Tree |
| | Tree in Garden Bed refer 0501 |
| | Tree in Grass (PQ2) refer 0501 |
| | Tree in Lawn (SL1) refer 0501 |
| | New Tree 1 |
| | Tree in Eastern Courtyard Rooftop Garden refer 0200 |
| | Existing Tree |
| | To be retained & protected |
| | Garden bed (0501) refer 0201 |
| | Planting Plans refer drawings 400-402 |
| | Refer detail 0301 |
| | Garden bed in TPZ (0502) |
| | Re-vegetation Garden bed (0503) |
| | Refer detail 0401 |
| | Rooftop Garden bed (0504) |
| | Refer detail 1101 |
| | Lawn (SL1) |
| | Refer detail 1101 |
| | Lawn on Concrete Slab (SL2) |
| | Refer detail 1001 |
| | Parapet Type 1 |
| | Refer detail 0101 & Specification |
| | Parapet Type 2 - Composite Grate |
| | Refer detail 0202 & Specification |
| | Parapet Type 3 - Concrete Slab |
| | Refer detail 0302 & Specification |
| | Concrete Edging (0501) |
| | Between Lawn & Garden bed |
| | Refer detail 0501 & Specification |
| | Steel Edging (0502) |
| | Between Lawn & Garden bed |
| | Refer detail 0502 & Specification |
| | Bike Rack Type 1 |
| | Not subject to Manufacturer's details |
| | Refer Specification |
| | Tactile Indicators |
| | Refer detail 1100 & Specification |
| | Pool Service Enclosure Fence |
| | Refer Architect's Documentation |
| | Irrigation Contention Pipe |
| | Indicatively shown only - confirm location with Superintendent |
| | Rooftop Drainage Inspection Point |
| | Refer Hydraulic Engineer's |
| | Rooftop Drainage 1 - confirm location with Superintendent |

Landings Australia
108 George Street
Adelaide, SA 5000, Australia
T +61 8 8223 1330
<http://www.tcl.net.au/>

T.C.L.
TOTAL CREATIVITY WITH LOGAN

David

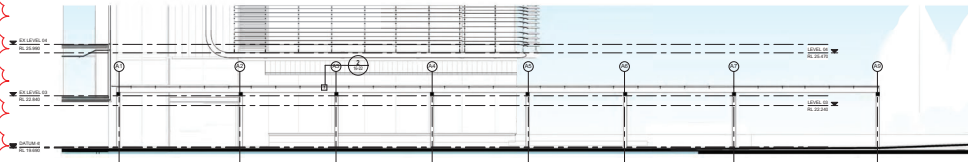
LAING O'ROURKE

[illegible]

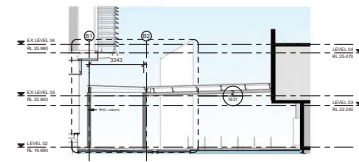
| | |
|---|--|
| <p>THE UNIVERSITY OF SYDNEY ETP STAGE 1</p> <p>Electrical Engineering Building University in Darlington, NSW 2008</p> | <p>Drawing Title</p> <p>Surfaces Plan 03 Eastern Courtyard</p> |
|---|--|

| | |
|--------------------------|---|
| Document Control Status: | |
| FOR CONSTRUCTION | |
| Project Number: | 210132.00 |
| Co-ordinated: | 00 |
| Project Architect: | TCL |
| Project Director: | 00 |
| Drawing Number: | |
| K33-TCL-LAS-DRG-00302 | |
| Drawn: | 00 / 00 |
| Date: | 1 / 100 @ 0.1 |
| Date: | 2010/02/29 |
| Revisions: | C3 |
| North: |  |

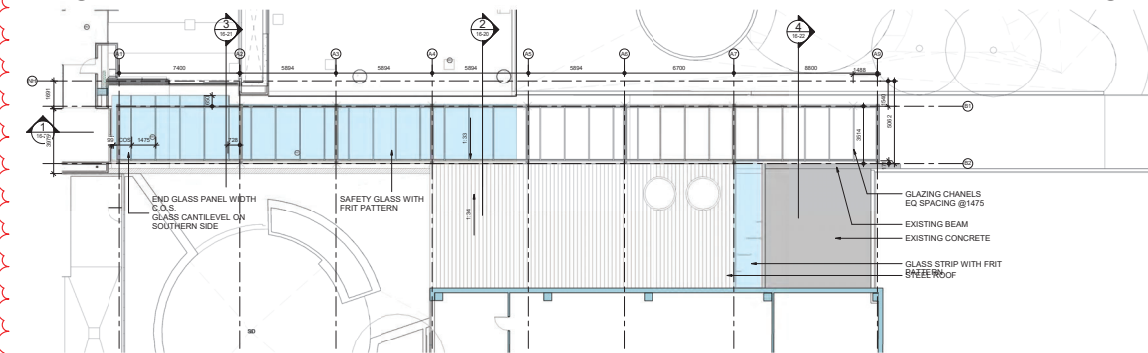
Proposed Engineering Walk Awning Eastern Landscape



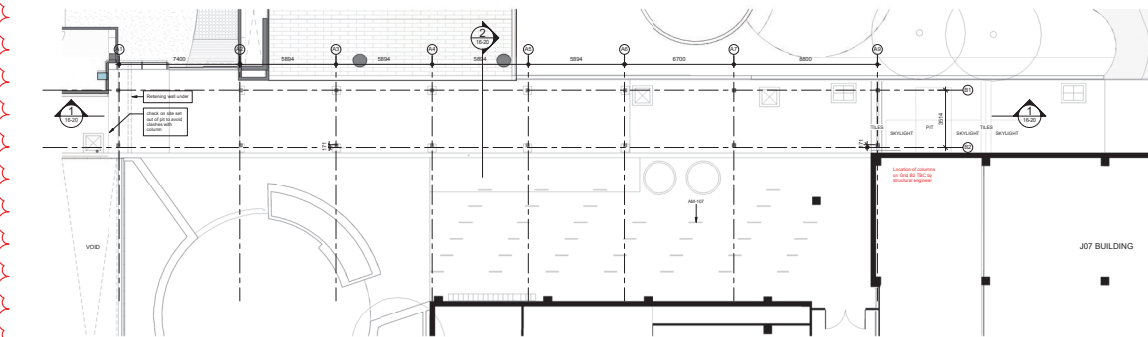
1 ENGINEERING WALK AWNING LONG SECTION
16-20 SCALE 1 : 100



2 ENGINEERING WALK AWNING CROSS SECTION
16-20 SCALE 1 : 100



3 ENGINEERING WALK AWNING ROOF
15-00 SCALE 1 : 100



4 ENGINEERING WALK AWNING PLAN
15-00 SCALE 1 : 100

[illegible][illegible]

Architectural detail drawing of a building section, showing a roof structure and interior elements. The drawing includes various materials and components labeled with text and leader lines. The roof structure is shown in cross-section, with a sloped roof and a flat roof section. The interior shows a wall and a floor. The drawing is a technical illustration with precise lines and shading.

Labels and components shown in the detail:

- C-Channel Beam, Monument Matt finish
- Lead Light Strip @ Rafter
- RHC Black finish, Monument Matt finish
- Profiled Gutter, Monument Matt finish
- Metal roofing sheet, Monument Matt finish
- Metal framing, Monument black finish
- Concealed Downpipe
- RHC used as downpipe, Monument black finish
- RHC column
- Overflow to grate drain
- Gate drain

Scale: 1:20

Architectural detail drawing of a roof edge assembly. The drawing shows a cross-section of a roof structure with various layers and components. Key elements include:

- RHC beam Monument Matt finish
- RHC Black finish Monument Matt finish
- Polycarbonate sheet falling to gutter
- Led Light Strip @ Rafter
- Profiled Gutter Monument Matt finish
- Coated Downpipe
- Sprinkler Main Pipe
- Awning connecting J07 to Engineering Work
- FT04 Mullion
- Level 22 Informal Working Area (20.220m)
- Level 21 Informal Working Area (20.110m)
- Level 20 Informal Working Area (20.000m)
- 3.00% slope
- Overflow to grate drain
- Grate drain

DETAIL 02
SCALE 1:20

[illegible][illegible]

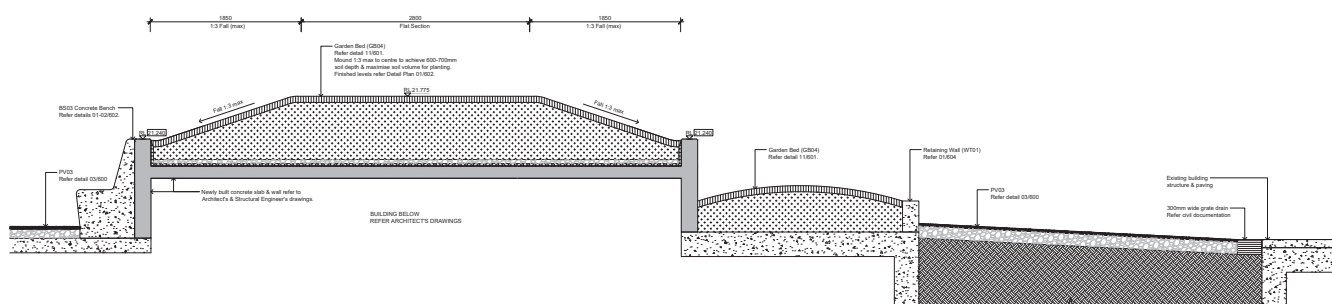
THE UNIVERSITY OF
SYDNEY ETP STAGE 1
Electrical Engineering Building
University in Darlington, NSW 2008

EXTERNAL WORKS -
ENGINEERING WALK AWNING
SHEET 2

ISSUED FOR CONSTRUCTION

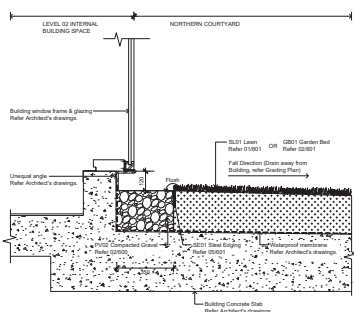
| | | | |
|--------------------|------------------------|------------|---|
| Project Number: | 215152-00 | Drawn: | SPG |
| Coordinated: | Sandra Pangloss Gosses | Scale: | 1" = 20' @ B1 |
| Project Architect: | Michael Bradburn | Date: | 06/08/2020 |
| Project Director: | David Hahn | Revisions: | 2 |
| Working Number: | | North: |  |

Proposed section - North Landscape



01 | NORTHERN COURTYARD - EXISTING WALL, BS03 SEAT & GARDEN BED INTERFACE

Scale 1:20



02 | BUILDING INTERFACE - WINDOW FRAME & LAWN (SL01)
Section - Northern Courtyard Scale 1:10

Refer to comments on sheet
K33-TCL-DRG-00201
Revision C6

[illegible]

Laing O'Rourke
150 George Street
Sydney, NSW 2000, Australia
T +61 2 8222 7322
http://www.lao.com.au

T.C.I.
The Chemical Industry

Laing O'Rourke

THE UNIVERSITY OF SYDNEY

Leasing Of Offices
• 40-42 W. 12th Street, 100-40-42 West, North York, NY 10020
• 212-462-2200 • Fax: 212-462-2201

Business Group
• 100-40-42 West, North York, NY 10020
• 212-462-2200 • Fax: 212-462-2201

BSA / BUILD / INAC
• 100-40-42 West, North York, NY 10020
• 212-462-2200 • Fax: 212-462-2201

Snow Australia Pty Ltd
• 100-40-42 West, North York, NY 10020
• 212-462-2200 • Fax: 212-462-2201

Control Plumbing Pty Ltd
• 100-40-42 West, North York, NY 10020
• 212-462-2200 • Fax: 212-462-2201

Argent Consulting
• 100-40-42 West, North York, NY 10020
• 212-462-2200 • Fax: 212-462-2201

Triple Five Pty Ltd
• 100-40-42 West, North York, NY 10020
• 212-462-2200 • Fax: 212-462-2201

Snow Waters & Partners
• 100-40-42 West, North York, NY 10020
• 212-462-2200 • Fax: 212-462-2201

Code Performance
• 100-40-42 West, North York, NY 10020
• 212-462-2200 • Fax: 212-462-2201

TCL Design
• 100-40-42 West, North York, NY 10020
• 212-462-2200 • Fax: 212-462-2201

GTA Computer
• 100-40-42 West, North York, NY 10020
• 212-462-2200 • Fax: 212-462-2201

Hotels Pty Limited
• 100-40-42 West, North York, NY 10020
• 212-462-2200 • Fax: 212-462-2201

Jeff Freeman Associates
• 100-40-42 West, North York, NY 10020
• 212-462-2200 • Fax: 212-462-2201

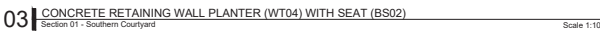
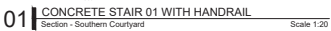
Lavind Consulting Engineers
• 100-40-42 West, North York, NY 10020
• 212-462-2200 • Fax: 212-462-2201

Project
THE UNIVERSITY OF SYDNEY ETP STAGE 1
Electrical Engineering Building
University in Darlingtown, NSW 2008

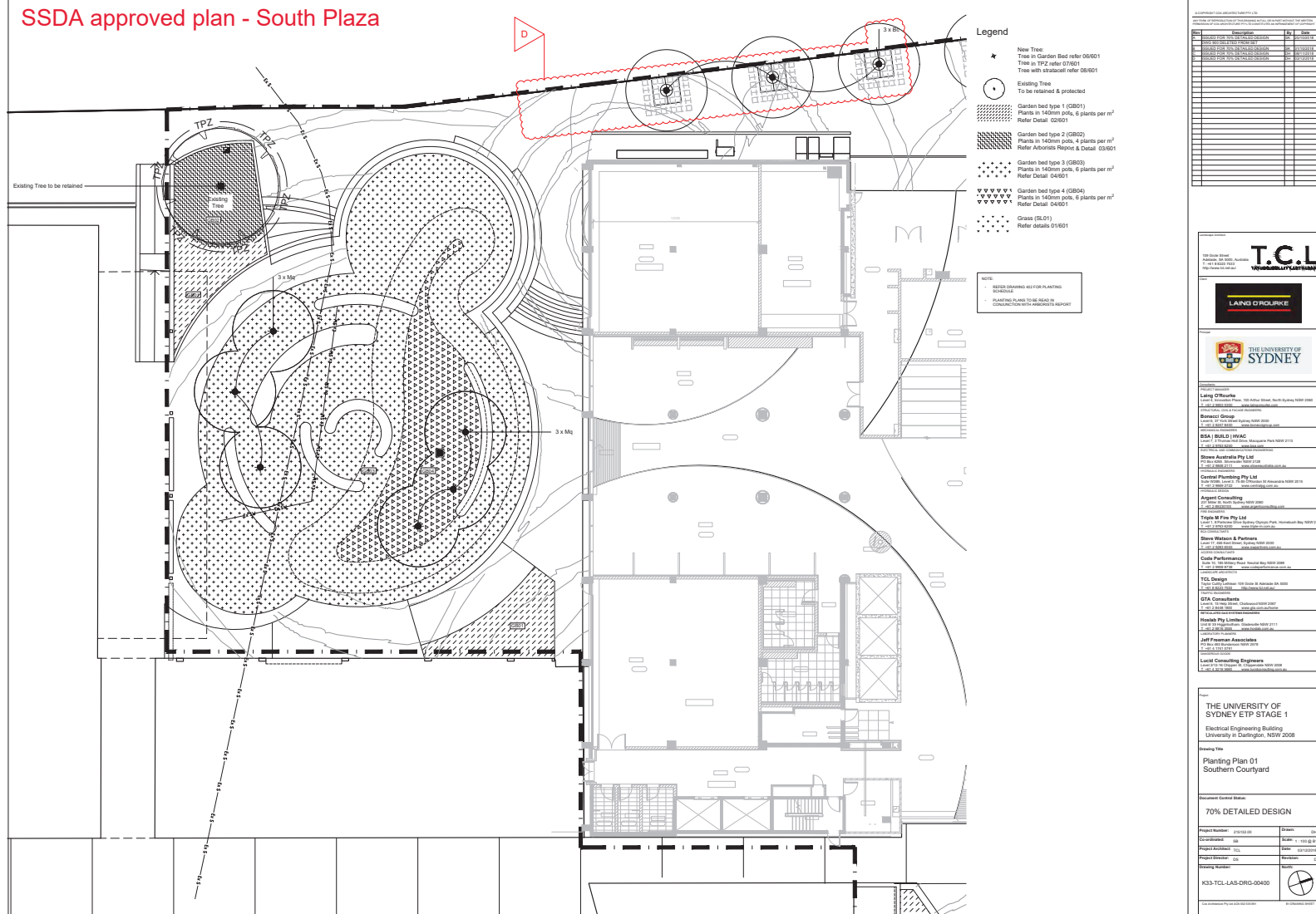
Drawing Title
**Sections 02
Northern Courtyard Details**

| | |
|--------------------------|-----------|
| Document Control Status: | |
| FOR CONSTRUCTION | |
| Project Number: | 215133-00 |
| Co-ordinated: | 000 / 000 |
| Project Architect: | TCL |
| Project Director: | 000 |
| Drawn: | 000 |
| Scale: | Various @ |
| Date: | 21.07.00 |
| Revision: | |

Proposed section - South Landscape



SSDA approved plan - South Plaza



New Tree:
Tree in Garden Bed refer 06/601
Tree in TPZ refer 07/601
Tree with stiltroot refer 08/601

Existing Tree
To be retained & protected

Garden bed type 1 (GB01)
Plants in 140mm pots, 6 plants per m²
Refer Detail 02/601

Garden bed type 2 (GB02)
Plants in 140mm pots, 4 plants per m²
Refer Arborists Report & Detail 03/601

Garden bed type 3 (GB03)
Plants in 140mm pots, 6 plants per m²
Refer Detail 04/601

Garden bed type 4 (GB04)
Plants in 140mm pots, 6 plants per m²
Refer Detail 04/601

Grass (SL01)
Refer details 01/601

NOTE:

- REFER DRAWING 402 FOR PLANTING SCHEDULE
- PLANTING PLANS TO BE READ IN CONJUNCTION WITH ARBORISTS REPORT

[illegible][illegible]

THE UNIVERSITY OF
SYDNEY ETP STAGE 1

Electrical Engineering Building
University in Darlington, NSW 2008

Planting Plan 02
Northern Courtyard

Document Control Status:

70% DETAILED DESIGN

| | | | |
|-----------------|-----------|----------|----|
| Project Number: | 215132-00 | Drawn: | CH |
| Scale: | | Revised: | |

| | | | |
|-------------------|-----|-------|------------|
| Project Architect | BCI | Date: | 03/12/2018 |
|-------------------|-----|-------|------------|

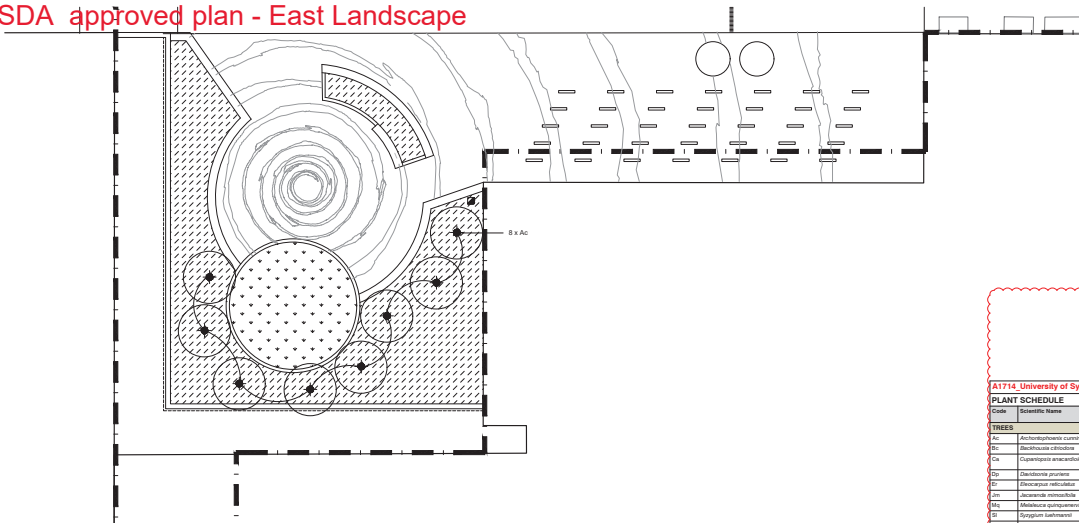
| | | | |
|-------------------|----|-----------|---|
| Project Director: | 06 | Revision: | 0 |
| Drawing Number: | | North: | |

K33-TCL-LAS-DRG-00401

Case Architecture Pty Ltd 600 622 000



SSDA approved plan - East Landscape



Legend

New Tree:
Tree in Garden Bed refer 06/01/01
Tree in TPZ refer 07/01/01
Tree with staccato refer 08/01/01

Existing Tree
To be retained & protected

Garden bed type 1 (GB01)
Plants in 140mm pots, 6 plants
Refer Detail 02/01/01

Garden bed type 2 (GB02)
Plants in 140mm pots, 4 plants
Refer Arborists Report & Detail

Garden bed type 3 (GB03)
Plants in 140mm pots, 6 plants
Refer Detail 04/01/01

Garden bed type 4 (GB04)
Plants in 140mm pots, 6 plants
Refer Detail 04/01/01

Grass (SL01)
Refer details 01/01/01

NOTE:

- PLANTING PLANS TO BE READ IN CONJUNCTION WITH ARBORISTS REPORT

| A1714 University of Sydney - ETP | | | | | | |
|----------------------------------|-----------------------------------|--------------|----------------------|---------|----------|----------|
| PLANT SCHEDULE | | | | | | |
| ID | Scientific Name | Common Name | Mean Height & Spread | Spacing | Pat Size | Quantity |
| TREES | | | | | | |
| 01 | <i>Homalium/banksia corymbosa</i> | Banksia Tree | 20 / 2 - 3 | 200L | 4 | |
| 02 | <i>Calleryna elliptica</i> | Lemon Myrtle | 4 / 1.5 - 2 | 200L | 6 | |
| 03 | <i>Calleryna speciosa</i> | Tasmanian | 5 / 1.5 - 2 | 200L | 11 | |
| 04 | <i>Calleryna speciosa</i> | Tasmanian | 5 / 1.5 - 2 | 200L | 4 | |
| 05 | <i>Calleryna speciosa</i> | Banksia Tree | 9 / 1.5 - 2 | 200L | 5 | |
| 06 | <i>Calleryna speciosa</i> | Lebanon | 18 / 10 - 15 | 200L | 1 | |
| 07 | <i>Calleryna speciosa</i> | Lebanon | 18 / 10 - 15 | 200L | 1 | |
| 08 | <i>Calleryna speciosa</i> | Lebanon | 18 / 10 - 15 | 200L | 1 | |
| 09 | <i>Calleryna speciosa</i> | Lebanon | 18 / 10 - 15 | 200L | 1 | |
| 10 | <i>Calleryna speciosa</i> | Lebanon | 18 / 10 - 15 | 200L | 1 | |
| SHRUBS | | | | | | |
| 01 | <i>Calleryna speciosa</i> | Lebanon | 18 / 10 - 15 | 200L | 1 | |
| 02 | <i>Calleryna speciosa</i> | Lebanon | 18 / 10 - 15 | 200L | 1 | |
| 03 | <i>Calleryna speciosa</i> | Lebanon | 18 / 10 - 15 | 200L | 1 | |
| 04 | <i>Calleryna speciosa</i> | Lebanon | 18 / 10 - 15 | 200L | 1 | |
| 05 | <i>Calleryna speciosa</i> | Lebanon | 18 / 10 - 15 | 200L | 1 | |
| 06 | <i>Calleryna speciosa</i> | Lebanon | 18 / 10 - 15 | 200L | 1 | |
| 07 | <i>Calleryna speciosa</i> | Lebanon | 18 / 10 - 15 | 200L | 1 | |
| 08 | <i>Calleryna speciosa</i> | Lebanon | 18 / 10 - 15 | 200L | 1 | |
| 09 | <i>Calleryna speciosa</i> | Lebanon | 18 / 10 - 15 | 200L | 1 | |
| 10 | <i>Calleryna speciosa</i> | Lebanon | 18 / 10 - 15 | 200L | 1 | |
| 11 | <i>Calleryna speciosa</i> | Lebanon | 18 / 10 - 15 | 200L | 1 | |
| 12 | <i>Calleryna speciosa</i> | Lebanon | 18 / 10 - 15 | 200L | 1 | |
| 13 | <i>Calleryna speciosa</i> | Lebanon | 18 / 10 - 15 | 200L | 1 | |
| 14 | <i>Calleryna speciosa</i> | Lebanon | 18 / 10 - 15 | 200L | 1 | |
| 15 | <i>Calleryna speciosa</i> | Lebanon | 18 / 10 - 15 | 200L | 1 | |
| 16 | <i>Calleryna speciosa</i> | Lebanon | 18 / 10 - 15 | 200L | 1 | |
| 17 | <i>Calleryna speciosa</i> | Lebanon | 18 / 10 - 15 | 200L | 1 | |
| 18 | <i>Calleryna speciosa</i> | Lebanon | 18 / 10 - 15 | 200L | 1 | |
| 19 | <i>Calleryna speciosa</i> | Lebanon | 18 / 10 - 15 | 200L | 1 | |
| 20 | <i>Calleryna speciosa</i> | Lebanon | 18 / 10 - 15 | 200L | 1 | |
| 21 | <i>Calleryna speciosa</i> | Lebanon | 18 / 10 - 15 | 200L | 1 | |
| 22 | <i>Calleryna speciosa</i> | Lebanon | 18 / 10 - 15 | 200L | 1 | |
| 23 | <i>Calleryna speciosa</i> | Lebanon | 18 / 10 - 15 | 200L | 1 | |
| 24 | <i>Calleryna speciosa</i> | Lebanon | 18 / 10 - 15 | 200L | 1 | |
| 25 | <i>Calleryna speciosa</i> | Lebanon | 18 / 10 - 15 | 200L | 1 | |
| 26 | <i>Calleryna speciosa</i> | Lebanon | 18 / 10 - 15 | 200L | 1 | |
| 27 | <i>Calleryna speciosa</i> | Lebanon | 18 / 10 - 15 | 200L | 1 | |
| 28 | <i>Calleryna speciosa</i> | Lebanon | 18 / 10 - 15 | 200L | 1 | |
| 29 | <i>Calleryna speciosa</i> | Lebanon | 18 / 10 - 15 | 200L | 1 | |
| 30 | <i>Calleryna speciosa</i> | Lebanon | 18 / 10 - 15 | 200L | 1 | |
| 31 | <i>Calleryna speciosa</i> | Lebanon | 18 / 10 - 15 | 200L | 1 | |
| 32 | <i>Calleryna speciosa</i> | Lebanon | 18 / 10 - 15 | 200L | 1 | |
| 33 | <i>Calleryna speciosa</i> | Lebanon | 18 / 10 - 15 | 200L | 1 | |
| 34 | <i>Calleryna speciosa</i> | Lebanon | 18 / 10 - 15 | 200L | 1 | |
| 35 | <i>Calleryna speciosa</i> | Lebanon | 18 / 10 - 15 | 200L | 1 | |
| 36 | <i>Calleryna speciosa</i> | Lebanon | 18 / 10 - 15 | 200L | 1 | |
| 37 | <i>Calleryna speciosa</i> | Lebanon | 18 / 10 - 15 | 200L | 1 | |
| 38 | <i>Calleryna speciosa</i> | Lebanon | 18 / 10 - 15 | 200L | 1 | |
| 39 | <i>Calleryna speciosa</i> | Lebanon | 18 / 10 - 15 | 200L | 1 | |
| 40 | <i>Calleryna speciosa</i> | Lebanon | 18 / 10 - 15 | 200L | 1 | |
| 41 | <i>Calleryna speciosa</i> | Lebanon | 18 / 10 - 15 | 200L | 1 | |

[illegible]

100-100 Street
 Adelaide SA 5000, Australia
 Tel: +61 8 8232 3444
 Fax: +61 8 8232 3445
 Email: info@tcll.com.au

T.C.L.

TECHNICAL CONSULTING LIMITED

LAINO C'ROURKE

Project:

THE UNIVERSITY OF SYDNEY

Laino O'Rourke
 100-100 Street, 100-100 Street, North Sydney NSW 2060
 Tel: +61 2 9550 1111 Fax: +61 2 9550 1112
 Email: info@tcll.com.au

BSA BUILD (HAC)
 100-100 Street, 100-100 Street, North Sydney NSW 2060
 Tel: +61 2 9550 1111 Fax: +61 2 9550 1112
 Email: info@tcll.com.au

Stones Jewellery Pty Ltd
 100-100 Street, 100-100 Street, North Sydney NSW 2060
 Tel: +61 2 9550 1111 Fax: +61 2 9550 1112
 Email: info@tcll.com.au

Central Planning Pty Ltd
 100-100 Street, 100-100 Street, North Sydney NSW 2060
 Tel: +61 2 9550 1111 Fax: +61 2 9550 1112
 Email: info@tcll.com.au

Angell Consulting
 100-100 Street, 100-100 Street, North Sydney NSW 2060
 Tel: +61 2 9550 1111 Fax: +61 2 9550 1112
 Email: info@tcll.com.au

Triple M Fine Pty Ltd
 100-100 Street, 100-100 Street, North Sydney NSW 2060
 Tel: +61 2 9550 1111 Fax: +61 2 9550 1112
 Email: info@tcll.com.au

Stones Wineries & Partners
 100-100 Street, 100-100 Street, North Sydney NSW 2060
 Tel: +61 2 9550 1111 Fax: +61 2 9550 1112
 Email: info@tcll.com.au

Cost Performance
 100-100 Street, 100-100 Street, North Sydney NSW 2060
 Tel: +61 2 9550 1111 Fax: +61 2 9550 1112
 Email: info@tcll.com.au

TCL Design
 100-100 Street, 100-100 Street, North Sydney NSW 2060
 Tel: +61 2 9550 1111 Fax: +61 2 9550 1112
 Email: info@tcll.com.au

GTA Consultants
 100-100 Street, 100-100 Street, North Sydney NSW 2060
 Tel: +61 2 9550 1111 Fax: +61 2 9550 1112
 Email: info@tcll.com.au

Hoschke Pty Limited
 100-100 Street, 100-100 Street, North Sydney NSW 2060
 Tel: +61 2 9550 1111 Fax: +61 2 9550 1112
 Email: info@tcll.com.au

Jeff Freeman Associates
 100-100 Street, 100-100 Street, North Sydney NSW 2060
 Tel: +61 2 9550 1111 Fax: +61 2 9550 1112
 Email: info@tcll.com.au

Laino Consulting Engineers
 100-100 Street, 100-100 Street, North Sydney NSW 2060
 Tel: +61 2 9550 1111 Fax: +61 2 9550 1112
 Email: info@tcll.com.au

Electrical Engineering Building
 University of Sydney, NSW 2008

Drawn by:

THE UNIVERSITY OF SYDNEY EIT STAGE 1

Project Name:

Electrical Engineering Building
 University of Sydney, NSW 2008

Project Number:

Planting Plan 03
 Eastern Courtyard

Project Status:

70% DETAILED DESIGN

Project Location:

K33-TCL-LS-DRG-00402

Project Date:

10/10/2008

Project Owner:

THE UNIVERSITY OF SYDNEY

Project Manager:

Electrical Engineering Building
 University of Sydney, NSW 2008

Project Engineer:

Electrical Engineering Building
 University of Sydney, NSW 2008

Project Designer:

Electrical Engineering Building
 University of Sydney, NSW 2008

Project Checker:

Electrical Engineering Building
 University of Sydney, NSW 2008

Project Approver:

Electrical Engineering Building
 University of Sydney, NSW 2008

Project Sign-off:

Electrical Engineering Building
 University of Sydney, NSW 2008

Project Seal:

Electrical Engineering Building
 University of Sydney, NSW 2008

Project Stamp:

Electrical Engineering Building
 University of Sydney, NSW 2008

Project Mark:

Electrical Engineering Building
 University of Sydney, NSW 2008

Project Note:

Electrical Engineering Building
 University of Sydney, NSW 2008

Project Comment:

Electrical Engineering Building
 University of Sydney, NSW 2008

Project Action:

Electrical Engineering Building
 University of Sydney, NSW 2008

Proposed plan - East Landscape

ADDITIONS 401

Legend

- Extent of Works
- Confirm with Project Manager
- New Advanced Tree:
 - Tree in Garden Bed refer 07601
 - Tree in Grass (PH02) refer 08001
 - Tree in Lawn (SL01) refer 09001
- New Tree T1:
 - Tree in Eastern Courtyard Rooftop
 - Garden Bed refer 02590
- Existing Tree:
 - To be retained & protected
 - Refer Arborists Report
- Planting under Existing Tree (GB02)
 - Refer detail 03001

Planting Mix Types:

| | | |
|-------|----|-------------------------|
| Mix A | Az | Alburtum aspidotrichum |
| | Cd | Carochiana dubia |
| | Ds | Dioscorea aspera |
| | Gd | Glechoma dioripa |
| | Mt | Macropodium complanatum |
| Mix B | Az | Azadirachta indica |
| | Cd | Dichelachne cincta |
| | Mt | Montanaria alpicola |
| | Ts | Thymus serpyllifolius |
| | Vg | Valeriana gracilis |
| Mix C | Ba | Baccharis articulata |
| | Ea | Elaeagnus argentea |
| | Fr | Fraxinus excelsior |
| | Ga | Gallunus viminalis |
| | Sr | Schoenoplectus validus |
| Mix D | Ds | Dioscorea cuneata |
| | Gd | Glechoma dioripa |
| Mix E | Gd | Glechoma dioripa |
| | Cr | Cornus reflexa |

At planting mix types plant in groups of 15-20 of same species, unless otherwise noted.

NOTE:

- Digital CAD will be provided for setout purposes.
- All setbacks to be marked up by Contractor & approved by Landscape Architect prior to plant installation.
- For drainage system including location, size & connection refer to Civil & Hydraulic Engineers' documentation.
- Contractor is to notify the Superintendent with any discrepancies between T.C.L.'s drawings, existing site conditions & other contractors' drawings.
- Take-good of all adjacent existing grading & surface treatments affected by the new construction works.
- All garden beds, tree planting & lawn to be irrigated. Irrigation scope to be design & construct refer specification. Contractor to provide construction drawings for approval by the client.
- New tree planting - contractor to check & ensure min. 600mm cover to all existing underground service conduits & pipes. Contractor to confirm the depth onsite with the Superintendent prior to any excavation work.
- Ensure new trees have min. 1m clearance from any underground service pits & conduits. Provide road control barriers to tree where required.
- For existing services & new proposed services (above & under ground) refer Engineering drawings. Confirm with Superintendent with any works adjacent to services.
- Planting arrangement to be approved onsite by T.C.L. prior to planting.
- Planting Plans to be read in conjunction with Arborists Report.

| Plant Schedule Name | Species/Genus | Per Schedule | Mix |
|------------------------------|-------------------------|--------------|-------|
| TREES | | | |
| Az | Azadirachta indica | 400 | 140mm |
| SHRUBS | | | |
| Ba | Baccharis articulata | 400 | 140mm |
| Cd | Carochiana dubia | 400 | 140mm |
| Ds | Dioscorea aspera | 400 | 140mm |
| Gd | Glechoma dioripa | 400 | 140mm |
| Mt | Macropodium complanatum | 400 | 140mm |
| PERENNIALS AND ALLIES | | | |
| Cr | Cornus reflexa | 400 | 140mm |
| GRASSES | | | |
| Ga | Gallunus viminalis | 400 | 140mm |
| Sr | Schoenoplectus validus | 400 | 140mm |
| Other | | | |
| Fr | Fraxinus excelsior | 400 | 140mm |
| Th | Thymus serpyllifolius | 400 | 140mm |
| Vg | Valeriana gracilis | 400 | 140mm |

Note:
Overall Plant Schedule of total plant quantities of all courtyards refer to Landscape Specification (at the end of 0255 Landscape - Plant Procurement section).

| Plant Schedule Name | Species/Genus | Per Schedule | Mix |
|------------------------------|-------------------------|--------------|-------|
| TREES | | | |
| Az | Azadirachta indica | 400 | 140mm |
| Cd | Carochiana dubia | 400 | 140mm |
| Ds | Dioscorea aspera | 400 | 140mm |
| Gd | Glechoma dioripa | 400 | 140mm |
| Mt | Macropodium complanatum | 400 | 140mm |
| SHRUBS | | | |
| Ba | Baccharis articulata | 400 | 140mm |
| Cd | Carochiana dubia | 400 | 140mm |
| Ds | Dioscorea aspera | 400 | 140mm |
| Gd | Glechoma dioripa | 400 | 140mm |
| Mt | Macropodium complanatum | 400 | 140mm |
| PERENNIALS AND ALLIES | | | |
| Cr | Cornus reflexa | 400 | 140mm |
| GRASSES | | | |
| Ga | Gallunus viminalis | 400 | 140mm |
| Sr | Schoenoplectus validus | 400 | 140mm |



| | | | | | | | | | | |
|--|--|--|--|---|---|--|---|---|--|--|
| LAING O'Rourke 100 Macquarie Street, Sydney NSW 2000 T: 02 9250 1000 F: 02 9250 1001 E: laing@lor.com.au W: www.laing-orourke.com.au | BSA / BUILD / INAC 100 Macquarie Street, Sydney NSW 2000 T: 02 9250 1000 F: 02 9250 1001 E: bsa@bsa.com.au W: www.bsa.com.au | Central Plumbing Pty Ltd 100 Macquarie Street, Sydney NSW 2000 T: 02 9250 1000 F: 02 9250 1001 E: central@centralplumbing.com.au W: www.centralplumbing.com.au | Triple M Fee Pty Ltd 100 Macquarie Street, Sydney NSW 2000 T: 02 9250 1000 F: 02 9250 1001 E: triplem@triplemfee.com.au W: www.triplemfee.com.au | Steve Warren & Partners 100 Macquarie Street, Sydney NSW 2000 T: 02 9250 1000 F: 02 9250 1001 E: steve@swarren.com.au W: www.swarren.com.au | Code Performance 100 Macquarie Street, Sydney NSW 2000 T: 02 9250 1000 F: 02 9250 1001 E: code@codeperformance.com.au W: www.codeperformance.com.au | TCL Design 100 Macquarie Street, Sydney NSW 2000 T: 02 9250 1000 F: 02 9250 1001 E: tcl@tcl.com.au W: www.tcl.com.au | OTA Consultants 100 Macquarie Street, Sydney NSW 2000 T: 02 9250 1000 F: 02 9250 1001 E: ota@ota.com.au W: www.ota.com.au | Hoskins Pty Limited 100 Macquarie Street, Sydney NSW 2000 T: 02 9250 1000 F: 02 9250 1001 E: hoskins@hoskins.com.au W: www.hoskins.com.au | Jeff Freeman Associates 100 Macquarie Street, Sydney NSW 2000 T: 02 9250 1000 F: 02 9250 1001 E: jeff@jefffreeman.com.au W: www.jefffreeman.com.au | Local Consulting Engineers 100 Macquarie Street, Sydney NSW 2000 T: 02 9250 1000 F: 02 9250 1001 E: local@localce.com.au W: www.localce.com.au |
|--|--|--|--|---|---|--|---|---|--|--|

| | | |
|--|---|--|
| THE UNIVERSITY OF SYDNEY ETP STAGE 1 Electrical Engineering Building University of Sydney, NSW 2008 | Planting Plan 03 Eastern Courtyard | FOR CONSTRUCTION Project Number: 201000000 Client: The University of Sydney Project Address: 100 Macquarie Street, Sydney NSW 2008 Project Engineer: [Signature] Project Manager: [Signature] Project Designer: [Signature] Project Checker: [Signature] Project Approver: [Signature] Project Date: 201000000 Project Status: [Status] Project Notes: [Notes] Project Contact: [Contact] Project Email: [Email] Project Phone: [Phone] Project Fax: [Fax] Project Website: [Website] Project Logo: [Logo] |
|--|---|--|

A1714_University of Sydney - ETP

OVERALL PLANT SCHEDULE

SSDA and Current Design

| SSDA Design | | | | Current Design |
|--------------------|----------------------------------|-------------|--------------|---|
| Code | Scientific Name | Spacing(mm) | Pot Size(mm) | Substituted Species |
| TREES | | | | |
| Aa | Archontophoenix cunninghamiana | as shown | 200L | Archontophoenix alexandrae |
| Bc | Backhousia citriodora | as shown | 200L | |
| Ca | Cupaniopsis anacardioides | as shown | 400L | |
| Er | Eleocarpus reticulatus | as shown | 400L | |
| Jm | Jacaranda mimosifolia | as shown | 200L | |
| Wa | Syzygium luehmannii | as shown | 200L | Waterhousea floribunda |
| SHRUBS | | | | |
| Be | Banksia ericifolia 'Little Eric' | 400 | 140mm | NOTE: All approved plant species haven't changed, except for 2 tree species as noted above, for further information refer to the Tree Schedule. The total combined Garden Bed area has increased by nearly 25% with the current design (approx. 1,530m2), in comparison to the previous SSDA scheme (1,170m2). |
| Cc | Callistemon citrinus 'Endeavour' | 400 | 140mm | |
| Cr | Correa reflexa | 400 | 140mm | |
| Ce | Crowea exalata | 400 | 140mm | |
| Dc | Dianella caerulea ssp.protensa | 400 | 140mm | |
| Gs | Grevillea sericea | 400 | 140mm | |
| Go | Goodenia ovata | 400 | 140mm | |
| Hv | Hardenbergia violacea | 400 | 140mm | |
| Ia | Indigofera australis | 400 | 140mm | |
| Ka | Kunzea ambigua | 400 | 140mm | |
| Ll | Lomandra longifolia 'Breeze' | 400 | 140mm | |
| Pc | Persoonia chamaepitys | 400 | 140mm | |
| Ts | Telopea speciosissima | 400 | 140mm | |
| Wf | Westringia fruticosa | 400 | 140mm | |
| Mix D | | | | |
| Dc | Dianella caerulea | 400 | 140mm | |
| Go | Goodenia ovata | 400 | 140mm | |
| Mix E | | | | |
| Gs | Grevillea sericea | 400 | 140mm | |
| Cr | Correa reflexa | 400 | 140mm | |
| FERNS AND ALLIES | | | | |
| Mc | Macrozamia communis | 400 | 140mm | |
| Mix A | | | | |
| Aa | Adiantum aethiopicum | 400 | 140mm | |
| Co | Calochlaena dubia | 400 | 140mm | |
| Dd | Doodia aspera | 400 | 140mm | |
| Gi | Gleichenia dicarpa | 400 | 140mm | |
| GRASSES | | | | |
| Mix B | | | | |
| At | Austrodanthonia tenuior | 400 | 140mm | |
| Dic | Dichelachne crinita | 400 | 140mm | |
| Ms | Microlaena stipoides | 400 | 140mm | |
| Ta | Themeda australis | 400 | 140mm | |
| Wg | Wahlenbergia gracilis | 400 | 140mm | |
| SEDGES AND REEDS | | | | |
| Mix C | | | | |
| Ba | Baumea articulata | 400 | 140mm | |
| Ea | Eleocharis acuta | 400 | 140mm | |
| Fn | Ficinia nodosa | 400 | 140mm | |
| Gs | Gahnia sieberiana | 400 | 140mm | |
| Sv | Schoenoplectus validus | 400 | 140mm | |
| BUSH TUCKER PLANTS | | | | |
| Ad | Austromyrtus dulcis | 400 | 140mm | |
| Dp | Davidsonia pruriens | as shown | 200mm | |
| Hh | Hibiscus heterophyllus | 400 | 140mm | |
| Ma | Microcitrus australasica | 600 | 140mm | |
| Tt | Tetragonia tetragonioides | 400 | 140mm | |
| Bo | Breynia oblongifolia | 400 | 140mm | |
| Pi | Prostanthera incisa | 400 | 140mm | |
| Am | Arthropodium milleflorum | 400 | 140mm | |

A1714_University of Sydney - ETP

| TREE SCHEDULE | | | | | | | | | |
|---------------|---------------------------------------|----------------------------|-----------------------------------|---------------------------|---------------------------------|-----------------------|-----------------------|----------------------|-------------------|
| SSDA Design | | | Current Design | | | | | | |
| Code | Scientific Name | Quantity All Courtyards | Scientific Name | Available Pot Size(mm) | Supplier | Northern Courtyard | SouthernC ourtyard | Eastern Courtyard | All Courtyards |
| SSDA Design | | | Current Design | | | | | | |
| Ac | <i>Archontophoenix cunninghamiana</i> | 8 | <i>Archontophoenix alexandrae</i> | 200L | Andreasens Green (02 9826 1911) | | | 8 | 8 |
| Bc | <i>Backhousia citriodora</i> | 6 | <i>Backhousia citriodora</i> | 200L | Andreasens Green (02 9826 1911) | 11 | | | 11 |
| Ca | <i>Cupaniopsis anacardioides</i> | 11 | <i>Cupaniopsis anacardioides</i> | 400L | Andreasens Green (02 9826 1911) | 7 | | | 7 |
| Er | <i>Eleocarpus reticulatus</i> | 5 | <i>Eleocarpus reticulatus</i> | 400L | Andreasens Green (02 9826 1911) | 6 | | | 5 |
| Jm | <i>Jacaranda mimosifolia</i> | 1 | <i>Jacaranda mimosifolia</i> | 200L | Andreasens Green (02 9826 1911) | 4 | 5 | | 9 |
| Sl | <i>Syzygium luehmannii</i> | 3 | <i>Waterhousea floribunda</i> | 200L | Andreasens Green (02 9826 1911) | 2 | | | 2 |
| | Total | 34 | | | | | | | 42 |

NOTE:

No change to the plant species from the previous SSDA plant schedule (refer to the Overall Plant Schedule), except a couple of tree species as highlighted in red above, due to the advanced size availability.

The substituted similar species have been approved by University of Sydney, dated 22nd July 2020.

All species are taken from the approved University of Sydney and City of Sydney plant lists.