

Construction Parking and Access Strategy – King Street

Project: Sydney Gateway Road Project

Document No: SGWPW-JHSW-NWW-EN-RPT-059246

DOCUMENT APPROVAL

REVISION	DATE	PREPARED BY	REVIEWED BY	APPROVED BY	REMARKS
00	26/10/22	A Masima	J Paul	A Major	For review
01	28/11/22	A Major	R Muir	I Karaban	For Issue
02	10/01/23	A Major	R Muir	A Deck	DPE update

Table of Contents

1.0	Introduction	3
1.1	Overview	3
1.2	Scope of Strategy	4
2.0	Existing Parking Supply & Utilisation.....	6
2.1	Surveys undertaken	6
2.2	Survey results	7
3.0	Impacts to Existing Parking	8
3.1	Parking spaces impacted	8
3.2	Impact to nearby stakeholders	9
4.0	Consultation.....	10
4.1	Consultation undertaken	10
4.2	Results	10
4.3	Additional consultation	10
5.0	Mitigation methods.....	11
6.0	Monitoring, Reporting & Contingencies.....	12
	Appendix A. Traffic Guidance Scheme	13
	Appendix B. Consultation with businesses and residents	14
	Appendix C. Council Consultation	15

1.0 Introduction

1.1 Overview

Sydney Gateway is a NSW Government initiative to improve road and freight rail transport to and from Sydney (Kingsford Smith) Airport and Port Botany. Sydney Gateway, as part of an integrated transport network, will increase capacity and improve connections to the ports to assist with growth in passenger, freight, and commuter traffic movements across the region.

Sydney Gateway is comprised of a road and a rail component. The road component has been separated into two stages:

- **Stage 1** – International Terminal and Qantas Drive connection - a new road connection, linking the Sydney motorway network at St Peters Interchange with Sydney Airport's International Terminal and Qantas Drive
- **Stage 3** – Domestic Terminals access - an arterial road connection and flyover to Sydney Airport's Domestic Terminals. This includes improvements to existing roads, to relieve congestion and improve connectivity to Sydney Airport Domestic Terminals and towards Port Botany.

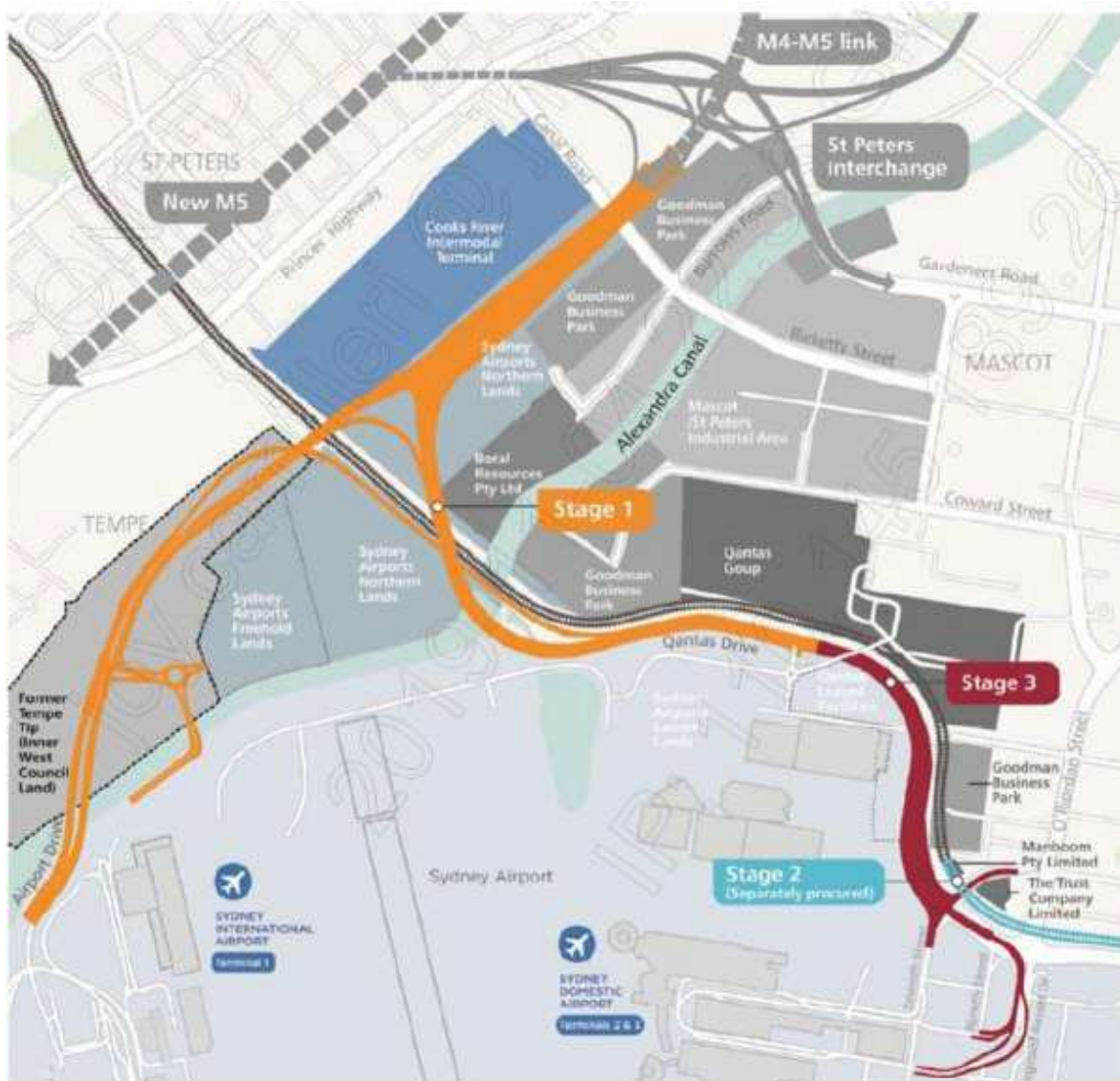


Figure 1 – Sydney Gateway location

John Holland Seymour Whyte (JHSW) Joint Venture has been contracted to deliver the road component (the Project).

1.2 Scope of Strategy

This document is the Construction Parking and Access Strategy for the Project, specifically to facilitate the temporary removal of four (4) parking spaces on King Street in Mascot. The parking spaces are required to be removed so that Horizontal Directional Drilling (HDD) under bore works can be undertaken to install an underground Ausgrid service into the Project alignment (refer to Figure 3 below for detail of the work scope).

The document has been developed to satisfy the requirements of Conditions of Approval (CoA) E57, which states the following:

A Construction Parking and Access Strategy must be prepared to identify and mitigate impacts resulting from on- and off-street parking changes during construction. The Strategy must include, but not necessarily be limited to:

Reference	Requirements	Where addressed
a)	<i>confirmation and timing of the removal of on- and off-street parking associated with construction;</i>	Section 3.0
b)	<i>parking accumulation surveys (consistent with Austroads requirements) of parking spaces to be removed to determine current demand during peak, off-peak and weekend periods;</i>	Section 2.0
c)	<i>consultation with relevant councils, affected stakeholders, including property occupants with driveway access, utilising existing on- and off-street parking stock which will be impacted as a result of construction;</i>	Section 4.0
d)	<i>assessment of the impacts of changes to on- and off-street parking stock taking into consideration outcomes of consultation with affected stakeholders;</i>	Section 2.0, 3.0, 4.0
e)	<i>identification of mitigation measures to manage impacts to stakeholders as a result of on and off-street parking changes including, but not necessarily limited to, staged removal and replacement of parking and provision of alternative parking arrangements;</i>	Section 5.0
f)	<i>strategies to address shortfalls in car parking spaces at individual construction ancillary facilities and disincentivising construction personnel from parking at Tempe Recreation Reserve and on the street near work sites, including managed staff parking arrangements and working with relevant council(s) to introduce parking restrictions;</i>	Section 3.0, 5.0
g)	<i>measures to encourage workers to use alternate transport arrangements, such as public transport;</i>	Section 4.0, 5.0, 6.0
h)	<i>details of shuttle bus service(s) to transport workers to construction sites from public transport hubs and off-site car parking facilities (where these are provided) and between construction sites;</i>	Section 5.0
i)	<i>mechanisms for monitoring, over appropriate intervals, to determine the effectiveness of implemented mitigation measures;</i>	Section 6.0
j)	<i>provision of contingency measures should the results of mitigation monitoring indicate implemented measures are ineffective; and</i>	Section 6.0
k)	<i>provision of reporting of monitoring results to the Planning Secretary and relevant council(s) at three (3) monthly intervals</i>	Section 6.0

*The **Construction Parking and Access Strategy** must be approved by the Planning Secretary prior to the commencement of any Work that impacts on street parking. The approved Strategy must be implemented before impacting on on-street parking.*

2.0 Existing Parking Supply & Utilisation

2.1 Surveys undertaken

Parking surveys, consistent with Austroads requirements, were conducted on local roads in the vicinity of the work area on King Street in September 2022. **Figure 2** highlights the area surveyed to determine the parking availability in the vicinity of the proposed temporary removal of four (4) parking spaces (see Section 3 below). The survey area includes the area affected by the temporary loss of parking, as well as all parking spaces within ~120m. The extent of area surveyed is considered sufficient based on limited number of parking spaces being impacted, the short timeframe of impacts and the location of the works (end of King Street).



The parking surveys were undertaken in September 2022 on the following days and times:

- Weekdays
 - Monday – 7:00am to 7:00pm
 - Tuesday – 7:00am to 7:00pm
 - Wednesday – 7:00am to 7:00pm
 - Thursday – 7:00am to 7:00pm
 - Friday – 7:00am to 7:00pm
- Weekend
 - Saturday – 7:00am to 7:00pm
 - Sunday – 7:00am to 7:00pm

These surveys were completed during week, off-peak and weekend periods.

2.2 Survey results

Results of the parking survey are shown in Figure 2 below:

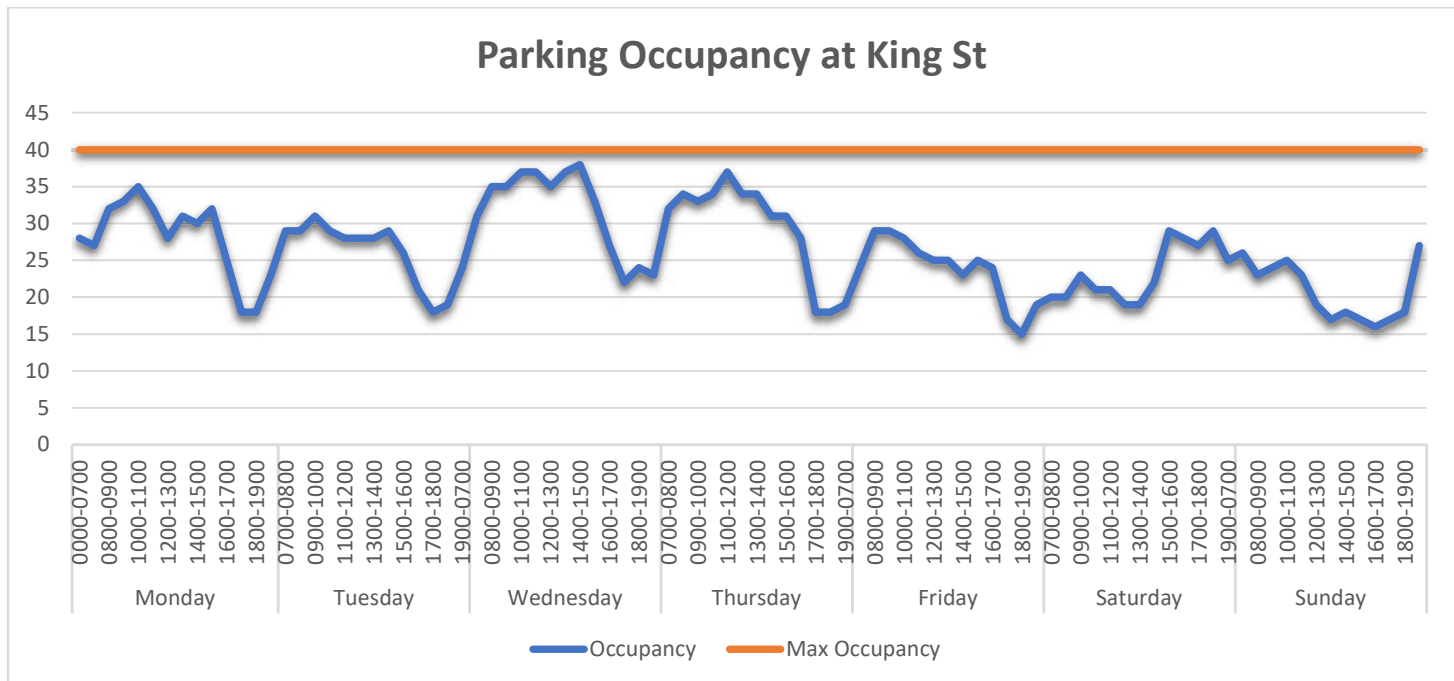


Table 2 - Results of the Parking Occupancy around the King Street work area

The survey indicated there were 40 parking spaces in the vicinity (~120m) of the work area, with additional parking visible in the wider precinct. The highest occupancies of 36 – 38 occupied parking spaces, of the 40 available, was recorded during midweek – peak hour times. However, overall occupancies during the non-peak weekdays (9am to 5pm) indicates a typical occupancy of 50% to 75%. This highlights the use of the parking supply of King Street is likely associated with nearby businesses for short term use. This is further supported by the nature of the staggering trend line in the graph above.

Additionally, during off peak periods and the weekend periods, parking occupation levels typically ranged between 40% and 60%, further highlighting the typical short-term occupancy for accessing nearby businesses.

A copy of the raw survey results is included in **Appendix A**.

3.0 Impacts to Existing Parking

3.1 Parking spaces impacted

The temporary removal of the four (4) on-street parking spaces within King Street, Mascot, are to facilitate the installation of critical utilities infrastructure for the Project. The scope of works is to install, via HDD underbore, a new Ausgrid service between the project corridor and an existing service pit located on King Street. The installation cannot be completed incrementally, as it passes under Qantas Drive and the ARTC corridor. As such, the entire service must be installed as a single work scope.

The work scope, which is shown below in Figure 3, has been adjusted to minimise the impacts to parking as much as practicable. This includes locating the HDD underbore plant on King Street, which means the pipe work (which takes up more space) will be installed within the Project alignment. Based on this, the impact to parking has been reduced to four (4) parking spaces. It is noted that the original scope of works had 10 car spaces impacted however through refinements in design and construction planning, the number of car spaces impacted has been reduced to four (4).

The impacts from the removal of the parking spaces have been further minimised by having the work site located at the end of a cul-de-sac as far away from businesses and residences as possible.

The works are programmed to commence on 17 February 2023 and will be completed no later than 17th April 2023. During this period parking will be impacted for 5 weeks. Access to local driveways in proximity to the work area will be maintained and managed through traffic control to cause negligible impact to the owner, with a Traffic Control Plan (TCP) to be developed prior to commencement of works.

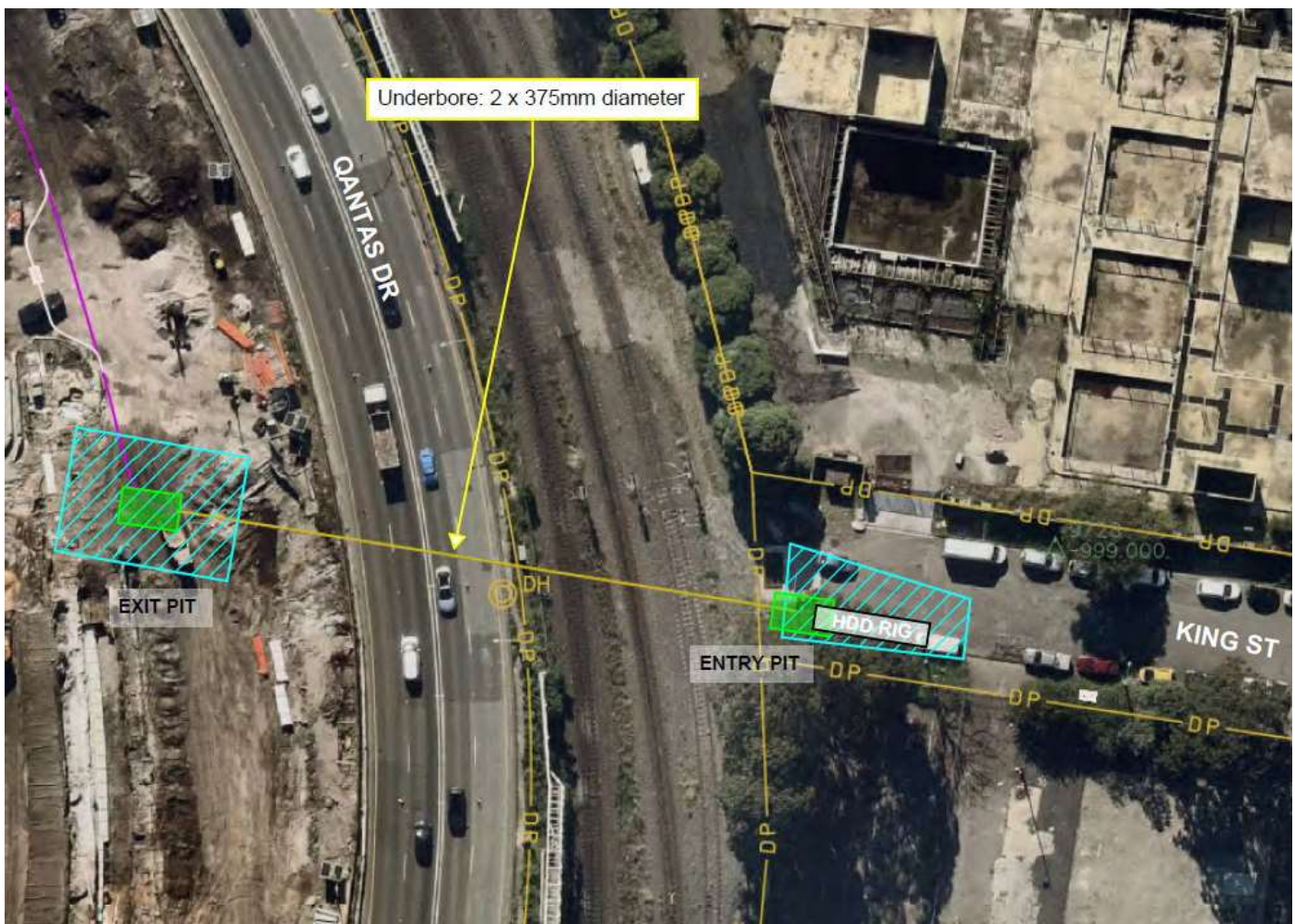


Figure 3 - HDD Under bore Scope of Works

3.2 Impact to nearby stakeholders

As per the survey results detailed in Section 2 above, there are 40 public parking spaces in the vicinity of the work site. Noting that the average daytime occupancy is typically around 30 parking spaces (~10 free) and the highest observed occupancy was 36-38 parking spaces, it is expected that the removal of four (4) car parking spaces will have no overall impact on the nearby receivers. This is supported by fact that area where the works are occurring is an industrial area with limited commercial businesses / outlets in the immediate vicinity. This is likely to limit the number of people who will park in the immediately impacted area on a regular basis. In addition, the parking spaces being impacted are timed, which further limits the impacts as they are only available for limited time (transient) and don't provide long-term parking. In addition, consultation with nearby businesses during site walks has indicated that a large proportion of them have on-site parking and indicated that they would not be impacted (refer to Section 4 and **Appendix B** below).

Furthermore, consultation with the nearby construction sites (located on both sides of King Street) have indicated that they have no issue with the works occurring (evidence included in **Appendix B**). Based on the above, as well as the implementation of the mitigation measures outlined in Section 5 below, the works are expected to have minimal impact on nearby stakeholders.

4.0 Consultation

JHSW has developed a Communication Strategy for the delivery of the project, in accordance with CoA B1, to facilitate communication with the community, businesses and nearby stakeholders.

4.1 Consultation undertaken

JHSW has undertaken a coordinated and targeted approach to consult with the affected stakeholders associated with the removal of on-street parking required at the end of King Street, in accordance with CoA E57.

The intent of this consultation was to:

- Inform affected stakeholders of the need to remove on-street parking during construction and manage driveway access
- Gain an understanding of affected stakeholders' current use of the existing on and off-street parking and the impacts removing car spaces along King Street
- Evaluate Stakeholder feedback

Between 23 August and 5 September 2022, consultation was undertaken with community and businesses nearby to the work area. 63 businesses were contacted, either in writing or in person. In addition, a fact sheet was distributed to 300 residences explaining the proposed works. Consultation with Bayside Council has also occurred.

4.2 Results

Of the 63 individual businesses contacted in proximity to this section of King Street, only 25 provided feedback. The majority of businesses that did respond advised that they either had off-street parking or did not see any issues.

Of the businesses that did not respond, the majority were located in a block of commercial suites. These were contacted directly by their strata manager, who requested that they contact the project if they have any concerns. No responses from the residential receivers contacted has been received to date.

No specific mitigation measures were identified following the outcomes of the stakeholder consultation associated with the removal of on-street parking along King St, therefore no additional mitigation measures were developed beyond those discussed in **Section 5.0**.

A more detailed summary of the consultation undertaken with businesses and residents, and the results, is included in **Appendix B**. Consultation with Bayside Council indicated that they had no issues and would be happy to issue a road occupancy. Evidence of consultation with Council is included in **Appendix C**.

4.3 Additional consultation

Consultation with stakeholders on King Street in the vicinity of the works will continue prior to and during construction, in accordance with the projects Communication Strategy.

5.0 Mitigation methods

In order to minimise impacts to nearby stakeholders, mitigation measures will be implemented prior to and during works. Prior to and during construction, the following mitigation measures will be implemented:

- Preventing workforce parking on streets
 - Providing sufficient parking within site compounds
 - Encouragement of the use of public transport – through the site induction and site toolbox talks to reduce the number of private vehicles travelling to and from the compounds
 - Encouragement of carpooling – Site Toolbox talks will be utilised to encourage construction workforce on the same shifts to co-ordinate with others to carpool to and from the compounds
 - Communication of parking restrictions to the construction workforce – parking restrictions around the compounds and work sites will be communicated to the construction workforce
- Minimising impacts from works
 - Where practical, essential vehicles (carrying tools, plant and other equipment to facilitate works) will be contained within the footprint of the worksite with no impact to the adjacent on-street parking.
 - Where required, running pre-starts at the site compound.
 - Continued consultation with nearby stakeholders prior to commencement and during works

Based on the above, construction workforce parking is expected to have minimal impact on the on-street parking given the provision of off-street parking at the Sydney Gateway Project compounds. No additional, site-specific mitigation measures are considered necessary however if there are complaints, they will be considered as part of a review.

Additional mitigation measures are contained with the Worker Travel and Parking Strategy, contained within the projects Traffic and Transport Management Plan.

6.0 Monitoring, Reporting & Contingencies

Monitoring the effectiveness of this Construction Parking and Access Strategy will be undertaken. Inspections will be undertaken weekly and will involve the following:

- Inspections for the presence of construction workforce parking on local roads
- Consultation will continue with nearby stakeholders to determine if they are being impacted by the loss of the four (4) car parking spaces. Consultation will be ongoing throughout the duration of works which impact on parking.

Where monitoring or community consultation identify that additional mitigation measures are required to minimise impacts on nearby stakeholders, discussions will occur with stakeholders on what additional efforts JHSW can make to minimise impacts to stakeholders, especially the nearest businesses. If there is a need to communicate to the workforce about these additional measures, this will be done through the following:

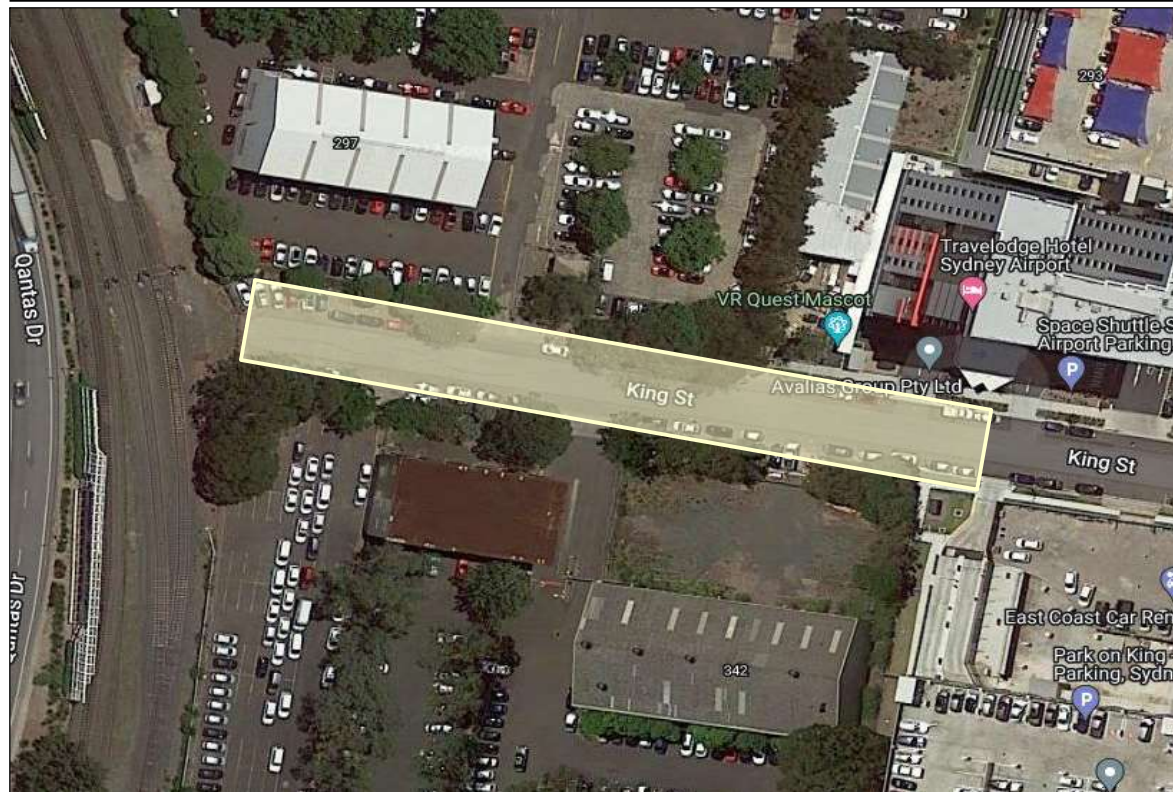
- Site Toolbox Talks
- Pre-Start Meetings

Due to the small number (four) of car spaces impacted, the short duration of works impacting car spaces (5 weeks), and the lack of concern raised by nearby stakeholders, no additional surveys are proposed. If works are delayed and extend beyond two (2) months, the need for additional surveys will be investigated following consideration of the results of consultation with nearby stakeholders.

At the completion of works and the return of parking, JHSW will notify the Department of Planning and Environment. This notification will include any complaints received and what mitigation measures were implemented.

Appendix A. Traffic Survey Results

Client	Sydney Gateway
Location	King St
Date	Tue, 13 - Mon, 19 Sep 2022
Survey Time	07:00-19:00 (inclusive)
Description	Parking Survey



Client Sydney Gateway
 Location King St
 Date Tuesday, 13 September 2022
 Survey Time 07:00-19:00 (inclusive)
 Description Parking Survey



										Vehicles Parked Before Survey Time
[15mins Interval]	King St									23
Time Period	IN			Total	OUT			Total	Occupancy	
	Light	Heavy	Bus		Light	Heavy	Bus			
7:00 to 7:15	5	0	0	5	0	0	0	0	28	
7:15 to 7:30	2	0	0	2	1	0	0	1	29	
7:30 to 7:45	2	1	0	3	2	0	0	2	30	
7:45 to 8:00	2	0	0	2	2	1	0	3	29	
8:00 to 8:15	2	0	0	2	4	0	0	4	27	
8:15 to 8:30	3	0	0	3	1	0	0	1	29	
8:30 to 8:45	2	0	0	2	2	0	0	2	29	
8:45 to 9:00	0	0	0	0	0	0	0	0	29	
9:00 to 9:15	1	0	0	1	1	0	0	1	29	
9:15 to 9:30	2	0	0	2	0	0	0	0	31	
9:30 to 9:45	1	0	0	1	5	0	0	5	27	
9:45 to 10:00	9	0	0	9	5	0	0	5	31	
10:00 to 10:15	1	0	0	1	2	0	0	2	30	
10:15 to 10:30	1	2	0	3	1	1	0	2	31	
10:30 to 10:45	2	0	0	2	0	1	0	1	32	
10:45 to 11:00	1	0	0	1	4	0	0	4	29	
11:00 to 11:15	2	0	0	2	3	0	0	3	28	
11:15 to 11:30	2	2	0	4	3	0	0	3	29	
11:30 to 11:45	1	0	0	1	2	1	0	3	27	
11:45 to 12:00	4	0	0	4	2	1	0	3	28	
12:00 to 12:15	0	0	0	0	1	0	0	1	27	
12:15 to 12:30	0	0	0	0	2	0	0	2	25	
12:30 to 12:45	4	0	0	4	1	0	0	1	28	
12:45 to 13:00	2	0	0	2	2	0	0	2	28	
13:00 to 13:15	0	1	0	1	2	0	0	2	27	
13:15 to 13:30	2	0	0	2	2	0	0	2	27	
13:30 to 13:45	1	0	0	1	1	0	0	1	27	
13:45 to 14:00	3	0	0	3	2	0	0	2	28	
14:00 to 14:15	1	0	0	1	2	1	0	3	26	
14:15 to 14:30	2	0	0	2	3	0	0	3	25	
14:30 to 14:45	4	1	0	5	1	0	0	1	29	
14:45 to 15:00	2	0	0	2	1	1	0	2	29	
15:00 to 15:15	3	0	0	3	6	0	0	6	26	
15:15 to 15:30	4	1	0	5	4	0	0	4	27	
15:30 to 15:45	3	0	0	3	3	1	0	4	26	
15:45 to 16:00	2	1	0	3	3	0	0	3	26	
16:00 to 16:15	2	0	0	2	2	1	0	3	25	
16:15 to 16:30	2	0	0	2	6	0	0	6	21	
16:30 to 16:45	4	1	0	5	3	0	0	3	23	
16:45 to 17:00	1	0	0	1	2	1	0	3	21	
17:00 to 17:15	1	0	0	1	2	0	0	2	20	
17:15 to 17:30	3	0	0	3	2	0	0	2	21	
17:30 to 17:45	1	0	0	1	8	0	0	8	14	
17:45 to 18:00	3	1	0	4	0	0	0	0	18	
18:00 to 18:15	4	0	0	4	2	1	0	3	19	
18:15 to 18:30	1	0	0	1	2	0	0	2	18	
18:30 to 18:45	0	1	0	1	0	0	0	0	19	
18:45 to 19:00	0	0	0	0	0	0	0	0	19	
Total	100	12	0	112	105	11	0	116		

[Hourly Summary]										King St									
Time Period	IN				Total	OUT				Total	IN				Total	OUT			
	Light	Heavy	Bus			Light	Heavy	Bus			Light	Heavy	Bus			Light	Heavy	Bus	
7:00 to 8:00	11	1	0		12	5	1	0		6	5	1	0		6	5	1	0	
7:15 to 8:15	8	1	0		9	9	1	0		10	9	1	0		10	9	1	0	
7:30 to 8:30	9	1	0		10	9	1	0		10	9	1	0		10	9	1	0	
7:45 to 8:45	9	0	0		9	9	1	0		10	9	1	0		10	9	1	0	
8:00 to 9:00	7	0	0		7	7	0	0		7	7	0	0		7	7	0	0	
8:15 to 9:15	6	0	0		6	4	0	0		4	6	0	0		6	4	0	0	
8:30 to 9:30	5	0	0		5	3	0	0		3	5	0	0		5	3	0	0	
8:45 to 9:45	4	0	0		4	6	0	0		6	4	0	0		4	6	0	0	
9:00 to 10:00	13	0	0		13	11	0	0		11	13	0	0		13	11	0	0	
9:15 to 10:15	13	0	0		13	12	0	0		12	13	0	0		13	12	0	0	
9:30 to 10:30	12	2	0		14	13	1	0		14	12	2	0		14	13	1	0	
9:45 to 10:45	13	2	0		15	8	2	0		10	13	2	0		15	8	2	0	
10:00 to 11:00	5	2	0		7	7	2	0		9	5	2	0		7	7	2	0	
10:15 to 11:15	6	2	0		8	8	2	0		10	6	2	0		8	8	2	0	
10:30 to 11:30	7	2	0		9	10	1	0		11	7	2	0		9	10	1	0	
10:45 to 11:45	6	2	0		8	12	1	0		13	6	2	0		8	12	1	0	
11:00 to 12:00	9	2	0		11	10	2	0		12	9	2	0		11	10	2	0	
11:15 to 12:15	7	2	0		9	8	2	0		10	7	2	0		9	8	2	0	
11:30 to 12:30	5	0	0		5	7	2	0		9	5	0	0		5	7	2	0	
11:45 to 12:45	8	0	0		8	6	1	0		7	8	0	0		8	6	1	0	
12:00 to 13:00	6	0	0		6	6	0	0		6	6	0	0		6	6	0	0	
12:15 to 13:15	6	1	0		7	7	0	0		7	6	1	0		7	7	0	0	
12:30 to 13:30	8	1	0		9	7	0	0		7	8	1	0		9	7	0	0	
12:45 to 13:45	5	1	0		6	7	0	0		7	5	1	0		6	7	0	0	
13:00 to 14:00	6	1	0		7	7	0	0		7	6	1	0		7	7	0	0	
13:15 to 14:15	7	0	0		7	7	1	0		8	7	0	0		7	7	1	0	
13:30 to 14:30	7	0	0		7	8	1	0		9	7	0	0		7	8	1	0	
13:45 to 14:45	10	1	0		11	8	1	0		9	10	1	0		11	8	1	0	
14:00 to 15:00	9	1	0		10	7	2	0		9	9	1	0		10	7	2	0	
14:15 to 15:15	11	1	0		12	11	1	0		12	11	1	0		12	11	1	0	
14:30 to 15:30	13	2	0		15	12	1	0		13	13	2	0		15	12	1	0	
14:45 to 15:45	12	1	0		13	14	2	0		16	12	1	0		13	14	2	0	
15:00 to 16:00	12	2	0		14	16	1	0		17	12	2	0		14	16	1	0	
15:15 to 16:15	11	2	0		13	12	2	0		14	11	2	0		13	12	2	0	
15:30 to 16:30	9	1	0		10	14	2	0		16	9	1	0		10	14	2	0	
15:45 to 16:45	10	2	0		12	14	1	0		15	10	2	0		12	14	1	0	
16:00 to 17:00	9	1	0		10	13	2	0		15	9	1	0		10	13	2	0	
16:15 to 17:15	8	1	0		9	13	1	0		14	8	1	0		9	13	1	0	
16:30 to 17:30	9	1	0		10	9	1	0		10	9	1	0		10	9	1	0	
16:45 to 17:45	6	0	0		6	14	1	0		15	6	0	0		6	14	1	0	
17:00 to 18:00	8	1	0		9	12	0	0		12	8	1	0		9	12	0	0	
17:15 to 18:15	11	1	0		12	12	1	0		13	11	1	0		12	12	1	0	
17:30 to 18:30	9	1	0		10	12	1	0		13	9	1	0		10	12	1	0	
17:45 to 18:45	8	2	0		10	4	1	0		5	8	2	0		10	4	1	0	
18:00 to 19:00	5	1	0		6	4	1	0		5	5	1	0		6	4	1	0	
Total	100	12	0		112	105	11	0		116	100	12	0		112	105	11	0	

		King St									
[Peak hr summary]		IN			Total	OUT			Total		
Time Period		Light	Heavy	Bus		Light	Heavy	Bus			
AM	9:30 to 10:30	12	2	0	14	13	1	0	14		
PM	15:00 to 16:00	12	2	0	14	16	1	0	17		

Client Sydney Gateway
 Location King St
 Date Wednesday, 14 September 2022
 Survey Time 07:00-19:00 (inclusive)
 Description Parking Survey



										Vehicles Parked Before Survey Time
[15mins Interval]	King St									24
Time Period	IN			Total	OUT			Total	Occupancy	
	Light	Heavy	Bus		Light	Heavy	Bus			
7:00 to 7:15	3	0	0	3	3	0	0	3	24	
7:15 to 7:30	3	0	0	3	2	0	0	2	25	
7:30 to 7:45	6	1	0	7	1	0	0	1	31	
7:45 to 8:00	2	0	0	2	1	1	0	2	31	
8:00 to 8:15	1	0	0	1	0	0	0	0	32	
8:15 to 8:30	3	0	0	3	1	0	0	1	34	
8:30 to 8:45	2	0	0	2	2	0	0	2	34	
8:45 to 9:00	1	0	0	1	0	0	0	0	35	
9:00 to 9:15	1	0	0	1	1	0	0	1	35	
9:15 to 9:30	3	0	0	3	1	0	0	1	37	
9:30 to 9:45	3	0	0	3	3	0	0	3	37	
9:45 to 10:00	1	0	0	1	3	0	0	3	35	
10:00 to 10:15	5	0	0	5	4	0	0	4	36	
10:15 to 10:30	0	0	0	0	0	0	0	0	36	
10:30 to 10:45	1	0	0	1	0	0	0	0	37	
10:45 to 11:00	1	0	0	1	1	0	0	1	37	
11:00 to 11:15	1	0	0	1	1	0	0	1	37	
11:15 to 11:30	1	0	0	1	1	0	0	1	37	
11:30 to 11:45	3	0	0	3	1	0	0	1	39	
11:45 to 12:00	4	1	0	5	4	0	0	4	40	
12:00 to 12:15	3	1	0	4	2	0	0	2	42	
12:15 to 12:30	0	0	0	0	2	1	0	3	39	
12:30 to 12:45	1	0	0	1	3	0	0	3	37	
12:45 to 13:00	0	0	0	0	1	1	0	2	35	
13:00 to 13:15	2	1	1	4	2	0	0	2	37	
13:15 to 13:30	3	0	0	3	1	1	0	2	38	
13:30 to 13:45	0	0	0	0	3	0	0	3	35	
13:45 to 14:00	5	0	0	5	2	0	1	3	37	
14:00 to 14:15	4	0	0	4	4	0	0	4	37	
14:15 to 14:30	2	0	0	2	0	0	0	0	39	
14:30 to 14:45	2	0	0	2	4	0	0	4	37	
14:45 to 15:00	4	0	0	4	3	0	0	3	38	
15:00 to 15:15	2	0	0	2	7	0	0	7	33	
15:15 to 15:30	2	0	0	2	6	0	0	6	29	
15:30 to 15:45	3	0	0	3	2	0	0	2	30	
15:45 to 16:00	5	0	1	6	3	0	0	3	33	
16:00 to 16:15	3	0	0	3	5	0	0	5	31	
16:15 to 16:30	3	1	0	4	3	0	0	3	32	
16:30 to 16:45	2	0	0	2	5	1	0	6	28	
16:45 to 17:00	1	1	0	2	2	1	0	3	27	
17:00 to 17:15	1	1	0	2	3	0	0	3	26	
17:15 to 17:30	3	0	0	3	2	1	0	3	26	
17:30 to 17:45	3	3	0	6	4	0	0	4	28	
17:45 to 18:00	0	0	0	0	6	0	0	6	22	
18:00 to 18:15	3	0	0	3	1	0	0	1	24	
18:15 to 18:30	1	0	0	1	2	0	0	2	23	
18:30 to 18:45	2	0	0	2	2	0	0	2	23	
18:45 to 19:00	1	0	0	1	0	0	0	0	24	
Total	106	10	2	118	110	7	1	118		

Client Sydney Gateway
 Location King St
 Date Thursday, 15 September 2022
 Survey Time 07:00-19:00 (inclusive)
 Description Parking Survey



King St										Vehicles Parked Before Survey Time
Time Period	IN			Total	OUT			Total	Occupancy	23
	Light	Heavy	Bus		Light	Heavy	Bus			
7:00 to 7:15	6	0	0	6	1	1	0	2	27	
7:15 to 7:30	3	0	0	3	2	0	0	2	28	
7:30 to 7:45	4	0	0	4	2	0	0	2	30	
7:45 to 8:00	2	0	0	2	0	0	0	0	32	
8:00 to 8:15	2	0	0	2	3	0	0	3	31	
8:15 to 8:30	4	0	0	4	3	0	0	3	32	
8:30 to 8:45	2	0	0	2	0	0	0	0	34	
8:45 to 9:00	1	0	0	1	1	0	0	1	34	
9:00 to 9:15	0	0	0	0	1	0	0	1	33	
9:15 to 9:30	2	0	0	2	2	0	0	2	33	
9:30 to 9:45	1	0	0	1	1	0	0	1	33	
9:45 to 10:00	0	0	0	0	0	0	0	0	33	
10:00 to 10:15	3	0	0	3	3	0	0	3	33	
10:15 to 10:30	2	0	0	2	2	0	0	2	33	
10:30 to 10:45	1	0	0	1	0	0	0	0	34	
10:45 to 11:00	1	1	0	2	2	0	0	2	34	
11:00 to 11:15	0	0	0	0	1	0	0	1	33	
11:15 to 11:30	6	0	0	6	0	1	0	1	38	
11:30 to 11:45	0	1	0	1	2	0	0	2	37	
11:45 to 12:00	1	1	0	2	2	0	0	2	37	
12:00 to 12:15	2	0	0	2	2	1	0	3	36	
12:15 to 12:30	1	0	0	1	1	1	0	2	35	
12:30 to 12:45	4	0	0	4	4	0	0	4	35	
12:45 to 13:00	2	0	0	2	3	0	0	3	34	
13:00 to 13:15	0	1	0	1	0	0	0	0	35	
13:15 to 13:30	0	0	0	0	0	0	0	0	35	
13:30 to 13:45	0	0	0	0	0	1	0	1	34	
13:45 to 14:00	2	0	0	2	2	0	0	2	34	
14:00 to 14:15	1	0	0	1	3	0	0	3	32	
14:15 to 14:30	1	0	0	1	1	0	0	1	32	
14:30 to 14:45	1	0	0	1	1	0	0	1	32	
14:45 to 15:00	4	0	0	4	5	0	0	5	31	
15:00 to 15:15	2	0	0	2	3	0	0	3	30	
15:15 to 15:30	1	0	0	1	2	0	0	2	29	
15:30 to 15:45	1	0	0	1	2	0	0	2	28	
15:45 to 16:00	3	1	0	4	0	1	0	1	31	
16:00 to 16:15	1	0	0	1	4	0	0	4	28	
16:15 to 16:30	2	0	0	2	1	0	0	1	29	
16:30 to 16:45	0	1	0	1	2	0	0	2	28	
16:45 to 17:00	2	0	0	2	1	1	0	2	28	
17:00 to 17:15	1	0	0	1	4	0	0	4	25	
17:15 to 17:30	2	0	0	2	4	0	0	4	23	
17:30 to 17:45	0	0	0	0	3	0	0	3	20	
17:45 to 18:00	1	0	0	1	3	0	0	3	18	
18:00 to 18:15	0	0	0	0	0	0	0	0	18	
18:15 to 18:30	3	0	0	3	0	0	0	0	21	
18:30 to 18:45	3	0	0	3	4	0	0	4	20	
18:45 to 19:00	2	0	0	2	4	0	0	4	18	
Total	83	6	0	89	87	7	0	94		

[Hourly Summary]	King St							
Time Period	IN			Total	OUT			Total
	Light	Heavy	Bus		Light	Heavy	Bus	
7:00 to 8:00	15	0	0	15	5	1	0	6
7:15 to 8:15	11	0	0	11	7	0	0	7
7:30 to 8:30	12	0	0	12	8	0	0	8
7:45 to 8:45	10	0	0	10	6	0	0	6
8:00 to 9:00	9	0	0	9	7	0	0	7
8:15 to 9:15	7	0	0	7	5	0	0	5
8:30 to 9:30	5	0	0	5	4	0	0	4
8:45 to 9:45	4	0	0	4	5	0	0	5
9:00 to 10:00	3	0	0	3	4	0	0	4
9:15 to 10:15	6	0	0	6	6	0	0	6
9:30 to 10:30	6	0	0	6	6	0	0	6
9:45 to 10:45	6	0	0	6	5	0	0	5
10:00 to 11:00	7	1	0	8	7	0	0	7
10:15 to 11:15	4	1	0	5	5	0	0	5
10:30 to 11:30	8	1	0	9	3	1	0	4
10:45 to 11:45	7	2	0	9	5	1	0	6
11:00 to 12:00	7	2	0	9	5	1	0	6
11:15 to 12:15	9	2	0	11	6	2	0	8
11:30 to 12:30	4	2	0	6	7	2	0	9
11:45 to 12:45	8	1	0	9	9	2	0	11
12:00 to 13:00	9	0	0	9	10	2	0	12
12:15 to 13:15	7	1	0	8	8	1	0	9
12:30 to 13:30	6	1	0	7	7	0	0	7
12:45 to 13:45	2	1	0	3	3	1	0	4
13:00 to 14:00	2	1	0	3	2	1	0	3
13:15 to 14:15	3	0	0	3	5	1	0	6
13:30 to 14:30	4	0	0	4	6	1	0	7
13:45 to 14:45	5	0	0	5	7	0	0	7
14:00 to 15:00	7	0	0	7	10	0	0	10
14:15 to 15:15	8	0	0	8	10	0	0	10
14:30 to 15:30	8	0	0	8	11	0	0	11
14:45 to 15:45	8	0	0	8	12	0	0	12
15:00 to 16:00	7	1	0	8	7	1	0	8
15:15 to 16:15	6	1	0	7	8	1	0	9
15:30 to 16:30	7	1	0	8	7	1	0	8
15:45 to 16:45	6	2	0	8	7	1	0	8
16:00 to 17:00	5	1	0	6	8	1	0	9
16:15 to 17:15	5	1	0	6	8	1	0	9
16:30 to 17:30	5	1	0	6	11	1	0	12
16:45 to 17:45	5	0	0	5	12	1	0	13
17:00 to 18:00	4	0	0	4	14	0	0	14
17:15 to 18:15	3	0	0	3	10	0	0	10
17:30 to 18:30	4	0	0	4	6	0	0	6
17:45 to 18:45	7	0	0	7	7	0	0	7
18:00 to 19:00	8	0	0	8	8	0	0	8
Total	83	6	0	89	87	7	0	94

		King St							
[Peak hr summary]		IN			Total	OUT			Total
Time Period		Light	Heavy	Bus		Light	Heavy	Bus	
AM	7:00 to 8:00	15	0	0	15	5	1	0	6
PM	12:00 to 13:00	9	0	0	9	10	2	0	12

AM
PM

Client Sydney Gateway
 Location King St
 Date Friday, 16 September 2022
 Survey Time 07:00-19:00 (inclusive)
 Description Parking Survey



Vehicles Parked Before Survey Time									
0									
King St									
Time Period	IN			Total	OUT			Total	Occupancy
	Light	Heavy	Bus		Light	Heavy	Bus		
7:00 to 7:15	6	0	0	6	4	0	0	4	2
7:15 to 7:30	3	0	0	3	1	0	0	1	4
7:30 to 7:45	2	0	0	2	1	0	0	1	5
7:45 to 8:00	0	0	0	0	0	0	0	0	5
8:00 to 8:15	5	0	0	5	0	0	0	0	10
8:15 to 8:30	3	0	0	3	1	0	0	1	12
8:30 to 8:45	1	1	0	2	4	1	0	5	9
8:45 to 9:00	1	1	0	2	0	1	0	1	10
9:00 to 9:15	2	0	0	2	2	0	0	2	10
9:15 to 9:30	1	0	0	1	0	0	0	0	11
9:30 to 9:45	4	0	0	4	2	0	0	2	13
9:45 to 10:00	1	0	0	1	4	0	0	4	10
10:00 to 10:15	0	0	0	0	1	0	0	1	9
10:15 to 10:30	1	0	0	1	1	0	0	1	9
10:30 to 10:45	0	0	0	0	0	0	0	0	9
10:45 to 11:00	0	2	0	2	1	1	0	2	9
11:00 to 11:15	1	1	0	2	1	2	0	3	8
11:15 to 11:30	2	0	0	2	1	0	0	1	9
11:30 to 11:45	1	2	0	3	2	0	0	2	10
11:45 to 12:00	1	0	0	1	2	2	0	4	7
12:00 to 12:15	2	0	0	2	2	0	0	2	7
12:15 to 12:30	4	0	0	4	5	0	0	5	6
12:30 to 12:45	1	0	0	1	3	0	0	3	4
12:45 to 13:00	2	0	0	2	0	0	0	0	6
13:00 to 13:15	1	0	0	1	4	0	0	4	3
13:15 to 13:30	2	1	0	3	2	1	0	3	3
13:30 to 13:45	3	0	0	3	3	0	0	3	3
13:45 to 14:00	4	0	0	4	1	0	0	1	6
14:00 to 14:15	2	0	0	2	5	0	0	5	3
14:15 to 14:30	2	0	0	2	3	0	0	3	2
14:30 to 14:45	1	1	0	2	1	1	0	2	2
14:45 to 15:00	7	0	0	7	5	0	0	5	4
15:00 to 15:15	2	0	0	2	5	0	0	5	1
15:15 to 15:30	1	1	0	2	0	0	0	0	3
15:30 to 15:45	5	0	0	5	0	1	0	1	7
15:45 to 16:00	0	0	0	0	1	0	0	1	6
16:00 to 16:15	0	0	0	0	0	0	0	0	6
16:15 to 16:30	2	1	0	3	0	0	0	0	9
16:30 to 16:45	4	0	0	4	7	1	0	8	5
16:45 to 17:00	3	0	0	3	3	0	0	3	5
17:00 to 17:15	4	0	0	4	3	0	0	3	6
17:15 to 17:30	2	0	0	2	4	0	0	4	4
17:30 to 17:45	2	0	0	2	4	0	0	4	2
17:45 to 18:00	3	0	0	3	7	0	0	7	-2
18:00 to 18:15	0	0	0	0	1	0	0	1	-3
18:15 to 18:30	1	0	0	1	2	0	0	2	-4
18:30 to 18:45	2	0	0	2	1	0	0	1	-3
18:45 to 19:00	0	0	0	0	1	0	0	1	-4
Total	97	11	0	108	101	11	0	112	

Client Sydney Gateway
 Location King St
 Date Saturday, 17 September 2022
 Survey Time 07:00-19:00 (inclusive)
 Description Parking Survey



King St										Vehicles Parked Before Survey Time
Time Period	IN			Total	OUT			Total	Occupancy	19
	Light	Heavy	Bus		Light	Heavy	Bus			
7:00 to 7:15	1	0	0	1	1	0	0	1	19	
7:15 to 7:30	2	0	0	2	1	0	0	1	20	
7:30 to 7:45	0	0	0	0	2	0	0	2	18	
7:45 to 8:00	3	0	0	3	1	0	0	1	20	
8:00 to 8:15	3	0	0	3	1	0	0	1	22	
8:15 to 8:30	1	0	0	1	2	0	0	2	21	
8:30 to 8:45	1	0	0	1	0	0	0	0	22	
8:45 to 9:00	0	0	0	0	2	0	0	2	20	
9:00 to 9:15	0	1	0	1	0	0	0	0	21	
9:15 to 9:30	2	0	0	2	0	0	0	0	23	
9:30 to 9:45	1	0	0	1	0	0	0	0	24	
9:45 to 10:00	0	0	0	0	1	0	0	1	23	
10:00 to 10:15	1	0	0	1	1	0	0	1	23	
10:15 to 10:30	2	0	0	2	2	0	0	2	23	
10:30 to 10:45	4	0	0	4	4	1	0	5	22	
10:45 to 11:00	2	0	0	2	3	0	0	3	21	
11:00 to 11:15	1	0	0	1	2	0	0	2	20	
11:15 to 11:30	1	0	0	1	1	0	0	1	20	
11:30 to 11:45	3	0	0	3	2	0	0	2	21	
11:45 to 12:00	2	1	0	3	3	0	0	3	21	
12:00 to 12:15	3	0	0	3	2	1	0	3	21	
12:15 to 12:30	2	0	0	2	3	0	0	3	20	
12:30 to 12:45	2	0	0	2	1	0	0	1	21	
12:45 to 13:00	0	0	0	0	2	0	0	2	19	
13:00 to 13:15	0	1	0	1	1	0	0	1	19	
13:15 to 13:30	3	0	1	4	2	0	0	2	21	
13:30 to 13:45	5	0	0	5	3	1	0	4	22	
13:45 to 14:00	2	1	0	3	6	0	0	6	19	
14:00 to 14:15	5	0	0	5	3	0	0	3	21	
14:15 to 14:30	1	0	0	1	0	0	0	0	22	
14:30 to 14:45	1	0	0	1	0	0	0	0	23	
14:45 to 15:00	1	0	0	1	1	1	0	2	22	
15:00 to 15:15	1	0	0	1	0	0	0	0	23	
15:15 to 15:30	3	0	0	3	0	0	0	0	26	
15:30 to 15:45	3	0	0	3	2	0	0	2	27	
15:45 to 16:00	3	0	0	3	1	0	0	1	29	
16:00 to 16:15	2	0	0	2	2	0	0	2	29	
16:15 to 16:30	0	0	0	0	0	0	0	0	29	
16:30 to 16:45	0	0	0	0	1	0	0	1	28	
16:45 to 17:00	1	0	0	1	1	0	0	1	28	
17:00 to 17:15	2	0	0	2	1	0	0	1	29	
17:15 to 17:30	0	0	0	0	1	0	0	1	28	
17:30 to 17:45	1	0	0	1	2	0	0	2	27	
17:45 to 18:00	0	0	0	0	0	0	0	0	27	
18:00 to 18:15	3	0	0	3	2	0	0	2	28	
18:15 to 18:30	0	0	0	0	0	0	0	0	28	
18:30 to 18:45	0	0	0	0	0	0	0	0	28	
18:45 to 19:00	1	0	0	1	0	0	0	0	29	
Total	75	4	1	80	66	4	0	70		

[Hourly Summary]		King St							
Time Period	IN			Total	OUT			Total	
	Light	Heavy	Bus		Light	Heavy	Bus		
7:00 to 8:00	6	0	0	6	5	0	0	5	
7:15 to 8:15	8	0	0	8	5	0	0	5	
7:30 to 8:30	7	0	0	7	6	0	0	6	
7:45 to 8:45	8	0	0	8	4	0	0	4	
8:00 to 9:00	5	0	0	5	5	0	0	5	
8:15 to 9:15	2	1	0	3	4	0	0	4	
8:30 to 9:30	3	1	0	4	2	0	0	2	
8:45 to 9:45	3	1	0	4	2	0	0	2	
9:00 to 10:00	3	1	0	4	1	0	0	1	
9:15 to 10:15	4	0	0	4	2	0	0	2	
9:30 to 10:30	4	0	0	4	4	0	0	4	
9:45 to 10:45	7	0	0	7	8	1	0	9	
10:00 to 11:00	9	0	0	9	10	1	0	11	
10:15 to 11:15	9	0	0	9	11	1	0	12	
10:30 to 11:30	8	0	0	8	10	1	0	11	
10:45 to 11:45	7	0	0	7	8	0	0	8	
11:00 to 12:00	7	1	0	8	8	0	0	8	
11:15 to 12:15	9	1	0	10	8	1	0	9	
11:30 to 12:30	10	1	0	11	10	1	0	11	
11:45 to 12:45	9	1	0	10	9	1	0	10	
12:00 to 13:00	7	0	0	7	8	1	0	9	
12:15 to 13:15	4	1	0	5	7	0	0	7	
12:30 to 13:30	5	1	1	7	6	0	0	6	
12:45 to 13:45	8	1	1	10	8	1	0	9	
13:00 to 14:00	10	2	1	13	12	1	0	13	
13:15 to 14:15	15	1	1	17	14	1	0	15	
13:30 to 14:30	13	1	0	14	12	1	0	13	
13:45 to 14:45	9	1	0	10	9	0	0	9	
14:00 to 15:00	8	0	0	8	4	1	0	5	
14:15 to 15:15	4	0	0	4	1	1	0	2	
14:30 to 15:30	6	0	0	6	1	1	0	2	
14:45 to 15:45	8	0	0	8	3	1	0	4	
15:00 to 16:00	10	0	0	10	3	0	0	3	
15:15 to 16:15	11	0	0	11	5	0	0	5	
15:30 to 16:30	8	0	0	8	5	0	0	5	
15:45 to 16:45	5	0	0	5	4	0	0	4	
16:00 to 17:00	3	0	0	3	4	0	0	4	
16:15 to 17:15	3	0	0	3	3	0	0	3	
16:30 to 17:30	3	0	0	3	4	0	0	4	
16:45 to 17:45	4	0	0	4	5	0	0	5	
17:00 to 18:00	3	0	0	3	4	0	0	4	
17:15 to 18:15	4	0	0	4	5	0	0	5	
17:30 to 18:30	4	0	0	4	4	0	0	4	
17:45 to 18:45	3	0	0	3	2	0	0	2	
18:00 to 19:00	4	0	0	4	2	0	0	2	
Total	75	4	1	80	66	4	0	70	

		King St									
[Peak hr summary]											
	Time Period	IN			Total	OUT			Total		
		Light	Heavy	Bus		Light	Heavy	Bus			
AM	10:15 to 11:15	9	0	0	9	11	1	0	12		
PM	13:15 to 14:15	15	1	1	17	14	1	0	15		

AM
PM

Client Sydney Gateway
 Location King St
 Date Sunday, 18 September 2022
 Survey Time 07:00-19:00 (inclusive)
 Description Parking Survey



										Vehicles Parked Before Survey Time
King St										25
Time Period	IN			Total	OUT			Total	Occupancy	
	Light	Heavy	Bus		Light	Heavy	Bus			
7:00 to 7:15	1	0	0	1	0	0	0	0	26	
7:15 to 7:30	0	0	0	0	1	0	0	1	25	
7:30 to 7:45	2	0	0	2	2	0	0	2	25	
7:45 to 8:00	2	0	0	2	1	0	0	1	26	
8:00 to 8:15	1	0	0	1	1	0	0	1	26	
8:15 to 8:30	1	0	0	1	2	0	0	2	25	
8:30 to 8:45	3	0	0	3	1	0	0	1	27	
8:45 to 9:00	0	0	0	0	4	0	0	4	23	
9:00 to 9:15	1	0	0	1	0	0	0	0	24	
9:15 to 9:30	0	0	0	0	1	0	0	1	23	
9:30 to 9:45	3	0	0	3	2	0	0	2	24	
9:45 to 10:00	0	0	0	0	0	0	0	0	24	
10:00 to 10:15	0	0	0	0	0	0	0	0	24	
10:15 to 10:30	2	0	0	2	1	0	0	1	25	
10:30 to 10:45	0	0	0	0	0	0	0	0	25	
10:45 to 11:00	0	0	0	0	0	0	0	0	25	
11:00 to 11:15	1	0	0	1	2	0	0	2	24	
11:15 to 11:30	2	0	0	2	1	0	0	1	25	
11:30 to 11:45	2	0	0	2	2	0	0	2	25	
11:45 to 12:00	0	0	0	0	2	0	0	2	23	
12:00 to 12:15	0	0	0	0	0	0	0	0	23	
12:15 to 12:30	0	0	0	0	1	0	0	1	22	
12:30 to 12:45	1	0	0	1	0	0	0	0	23	
12:45 to 13:00	0	0	0	0	4	0	0	4	19	
13:00 to 13:15	1	0	0	1	1	0	0	1	19	
13:15 to 13:30	1	0	0	1	2	0	0	2	18	
13:30 to 13:45	0	0	0	0	1	0	0	1	17	
13:45 to 14:00	1	0	0	1	1	0	0	1	17	
14:00 to 14:15	2	1	0	3	1	0	0	1	19	
14:15 to 14:30	2	0	0	2	2	0	0	2	19	
14:30 to 14:45	1	0	0	1	0	1	0	1	19	
14:45 to 15:00	1	0	0	1	2	0	0	2	18	
15:00 to 15:15	1	0	0	1	2	0	0	2	17	
15:15 to 15:30	1	0	0	1	0	0	0	0	18	
15:30 to 15:45	2	0	0	2	1	0	0	1	19	
15:45 to 16:00	2	0	0	2	4	0	0	4	17	
16:00 to 16:15	3	0	0	3	4	0	0	4	16	
16:15 to 16:30	0	0	0	0	2	0	0	2	14	
16:30 to 16:45	1	0	0	1	1	0	0	1	14	
16:45 to 17:00	1	1	0	2	0	0	0	0	16	
17:00 to 17:15	2	0	0	2	1	0	0	1	17	
17:15 to 17:30	1	0	0	1	0	0	0	0	18	
17:30 to 17:45	1	0	0	1	1	0	0	1	18	
17:45 to 18:00	0	0	0	0	1	0	0	1	17	
18:00 to 18:15	1	0	0	1	0	0	0	0	18	
18:15 to 18:30	2	0	0	2	1	0	0	1	19	
18:30 to 18:45	0	0	0	0	0	0	0	0	19	
18:45 to 19:00	2	0	0	2	3	0	0	3	18	
Total	51	2	0	53	59	1	0	60		

										King St				
										IN				
Time Period	Light	Heavy	Bus	Total	Light	Heavy	Bus	Total	Occupancy	OUT				
7:00 to 8:00	5	0	0	5	4	0	0	4						
7:15 to 8:15	5	0	0	5	5	0	0	5						
7:30 to 8:30	6	0	0	6	6	0	0	6						
7:45 to 8:45	7	0	0	7	5	0	0	5						
8:00 to 9:00	5	0	0	5	8	0	0	8						
8:15 to 9:15	5	0	0	5	7	0	0	7						
8:30 to 9:30	4	0	0	4	6	0	0	6						
8:45 to 9:45	4	0	0	4	7	0	0	7						
9:00 to 10:00	4	0	0	4	3	0	0	3						
9:15 to 10:15	3	0	0	3	3	0	0	3						
9:30 to 10:30	5	0	0	5	3	0	0	3						
9:45 to 10:45	2	0	0	2	1	0	0	1						
10:00 to 11:00	2	0	0	2	1	0	0	1						
10:15 to 11:15	3	0	0	3	3	0	0	3						
10:30 to 11:30	3	0	0	3	3	0	0	3						
10:45 to 11:45	5	0	0	5	5	0	0	5						
11:00 to 12:00	5	0	0	5	7	0	0	7						
11:15 to 12:15	4	0	0	4	5	0	0	5						
11:30 to 12:30	2	0	0	2	5	0	0	5						
11:45 to 12:45	1	0	0	1	3	0	0	3						
12:00 to 13:00	1	0	0	1	5	0	0	5						
12:15 to 13:15	2	0	0	2	6	0	0	6						
12:30 to 13:30	3	0	0	3	7	0	0	7						
12:45 to 13:45	2	0	0	2	8	0	0	8						
13:00 to 14:00	3	0	0	3	5	0	0	5						
13:15 to 14:15	4	1	0	5	5	0	0	5						
13:30 to 14:30	5	1	0	6	5	0	0	5						
13:45 to 14:45	6	1	0	7	4	1	0	5						
14:00 to 15:00	6	1	0	7	5	1	0	6						
14:15 to 15:15	5	0	0	5	6	1	0	7						
14:30 to 15:30	4	0	0	4	4	1	0	5						
14:45 to 15:45	5	0	0	5	5	0	0	5						
15:00 to 16:00	6	0	0	6	7	0	0	7						
15:15 to 16:15	8	0	0	8	9	0	0	9						
15:30 to 16:30	7	0	0	7	11	0	0	11						
15:45 to 16:45	6	0	0	6	11	0	0	11						
16:00 to 17:00	5	1	0	6	7	0	0	7						
16:15 to 17:15	4	1	0	5	4	0	0	4						
16:30 to 17:30	5	1	0	6	2	0	0	2						
16:45 to 17:45	5	1	0	6	2	0	0	2						
17:00 to 18:00	4	0	0	4	3	0	0	3						
17:15 to 18:15	3	0	0	3	2	0	0	2						
17:30 to 18:30	4	0	0	4	3	0	0	3						
17:45 to 18:45	3	0	0	3	2	0	0	2						
18:00 to 19:00	5	0	0	5	4	0	0	4						
Total	51	2	0	53	59	1	0	60						

										King St				
										IN				
Time Period	Light	Heavy	Bus	Total	Light	Heavy	Bus	Total	Occupancy	OUT				
8:00 to 9:00	5	0	0	5	8	0	0	8						
15:30 to 16:30	7	0	0	7	11	0	0	11						

AM
PM

Client Sydney Gateway
 Location King St
 Date Monday, 19 September 2022
 Survey Time 07:00-19:00 (inclusive)
 Description Parking Survey



King St										Vehicles Parked Before Survey Time
27										Occupancy
Time Period	IN			Total	OUT			Total		
	Light	Heavy	Bus		Light	Heavy	Bus			
7:00 to 7:15	5	1	0	6	5	0	0	5		28
7:15 to 7:30	4	0	0	4	4	1	0	5		27
7:30 to 7:45	2	0	0	2	2	1	0	3		26
7:45 to 8:00	3	0	0	3	2	0	0	2		27
8:00 to 8:15	2	1	0	3	1	0	0	1		29
8:15 to 8:30	2	0	0	2	1	0	0	1		30
8:30 to 8:45	0	0	0	0	0	0	0	0		30
8:45 to 9:00	2	1	0	3	1	0	0	1		32
9:00 to 9:15	5	0	0	5	2	1	0	3		34
9:15 to 9:30	3	0	0	3	3	0	0	3		34
9:30 to 9:45	4	0	0	4	4	0	0	4		34
9:45 to 10:00	3	1	0	4	3	2	0	5		33
10:00 to 10:15	1	0	0	1	2	0	0	2		32
10:15 to 10:30	5	0	0	5	3	0	0	3		34
10:30 to 10:45	1	0	0	1	2	0	0	2		33
10:45 to 11:00	3	0	0	3	1	0	0	1		35
11:00 to 11:15	3	0	0	3	5	0	0	5		33
11:15 to 11:30	3	1	0	4	4	0	0	4		33
11:30 to 11:45	4	0	0	4	4	1	0	5		32
11:45 to 12:00	6	0	0	6	6	0	0	6		32
12:00 to 12:15	2	0	0	2	3	0	0	3		31
12:15 to 12:30	0	0	0	0	4	0	0	4		27
12:30 to 12:45	1	0	0	1	1	0	0	1		27
12:45 to 13:00	3	0	0	3	2	0	0	2		28
13:00 to 13:15	1	0	0	1	0	0	0	0		29
13:15 to 13:30	2	0	0	2	1	0	0	1		30
13:30 to 13:45	2	0	0	2	0	0	0	0		32
13:45 to 14:00	1	1	0	2	3	0	0	3		31
14:00 to 14:15	2	0	0	2	2	0	0	2		31
14:15 to 14:30	1	0	0	1	1	0	0	1		31
14:30 to 14:45	1	0	0	1	0	0	0	0		32
14:45 to 15:00	1	0	0	1	3	0	0	3		30
15:00 to 15:15	2	0	0	2	1	0	0	1		31
15:15 to 15:30	0	1	0	1	1	1	0	2		30
15:30 to 15:45	5	0	0	5	1	1	0	2		33
15:45 to 16:00	4	0	0	4	5	0	0	5		32
16:00 to 16:15	1	1	0	2	2	0	0	2		32
16:15 to 16:30	1	0	0	1	4	0	0	4		29
16:30 to 16:45	1	0	0	1	5	1	0	6		24
16:45 to 17:00	4	1	0	5	4	0	0	4		25
17:00 to 17:15	3	1	0	4	5	1	0	6		23
17:15 to 17:30	0	0	0	0	6	1	0	7		16
17:30 to 17:45	0	0	0	0	0	0	0	0		16
17:45 to 18:00	2	0	0	2	0	0	0	0		18
18:00 to 18:15	0	0	0	0	2	0	0	2		16
18:15 to 18:30	3	0	0	3	2	0	0	2		17
18:30 to 18:45	1	0	0	1	1	0	0	1		17
18:45 to 19:00	2	0	0	2	1	0	0	1		18
Total	107	10	0	117	115	11	0	126		

[Hourly Summary]		King St							
Time Period	IN			Total	OUT			Total	
	Light	Heavy	Bus		Light	Heavy	Bus		
7:00 to 8:00	14	1	0	15	13	2	0	15	
7:15 to 8:15	11	1	0	12	9	2	0	11	
7:30 to 8:30	9	1	0	10	6	1	0	7	
7:45 to 8:45	7	1	0	8	4	0	0	4	
8:00 to 9:00	6	2	0	8	3	0	0	3	
8:15 to 9:15	9	1	0	10	4	1	0	5	
8:30 to 9:30	10	1	0	11	6	1	0	7	
8:45 to 9:45	14	1	0	15	10	1	0	11	
9:00 to 10:00	15	1	0	16	12	3	0	15	
9:15 to 10:15	11	1	0	12	12	2	0	14	
9:30 to 10:30	13	1	0	14	12	2	0	14	
9:45 to 10:45	10	1	0	11	10	2	0	12	
10:00 to 11:00	10	0	0	10	8	0	0	8	
10:15 to 11:15	12	0	0	12	11	0	0	11	
10:30 to 11:30	10	1	0	11	12	0	0	12	
10:45 to 11:45	13	1	0	14	14	1	0	15	
11:00 to 12:00	16	1	0	17	19	1	0	20	
11:15 to 12:15	15	1	0	16	17	1	0	18	
11:30 to 12:30	12	0	0	12	17	1	0	18	
11:45 to 12:45	9	0	0	9	14	0	0	14	
12:00 to 13:00	6	0	0	6	10	0	0	10	
12:15 to 13:15	5	0	0	5	7	0	0	7	
12:30 to 13:30	7	0	0	7	4	0	0	4	
12:45 to 13:45	8	0	0	8	3	0	0	3	
13:00 to 14:00	6	1	0	7	4	0	0	4	
13:15 to 14:15	7	1	0	8	6	0	0	6	
13:30 to 14:30	6	1	0	7	6	0	0	6	
13:45 to 14:45	5	1	0	6	6	0	0	6	
14:00 to 15:00	5	0	0	5	6	0	0	6	
14:15 to 15:15	5	0	0	5	5	0	0	5	
14:30 to 15:30	4	1	0	5	5	1	0	6	
14:45 to 15:45	8	1	0	9	6	2	0	8	
15:00 to 16:00	11	1	0	12	8	2	0	10	
15:15 to 16:15	10	2	0	12	9	2	0	11	
15:30 to 16:30	11	1	0	12	12	1	0	13	
15:45 to 16:45	7	1	0	8	16	1	0	17	
16:00 to 17:00	7	2	0	9	15	1	0	16	
16:15 to 17:15	9	2	0	11	18	2	0	20	
16:30 to 17:30	8	2	0	10	20	3	0	23	
16:45 to 17:45	7	2	0	9	15	2	0	17	
17:00 to 18:00	5	1	0	6	11	2	0	13	
17:15 to 18:15	2	0	0	2	8	1	0	9	
17:30 to 18:30	5	0	0	5	4	0	0	4	
17:45 to 18:45	6	0	0	6	5	0	0	5	
18:00 to 19:00	6	0	0	6	6	0	0	6	
Total	107	10	0	117	115	11	0	126	

		King St							
[Peak hr summary]		IN			Total	OUT			Total
Time Period		Light	Heavy	Bus		Light	Heavy	Bus	
AM	11:00 to 12:00	16	1	0	17	19	1	0	20
	16:30 to 17:30	8	2	0	10	20	3	0	23

Appendix B. Consultation with businesses and residents

Resident and Business Consultation

The JHSW JV has adopted a coordinated and targeted approach to consultation and communication with affected stakeholders following the principles and processes outlined in the approved project Community Communication Strategy.

As part of the development of this strategy, stakeholders were informed about the proposed work and the need to remove on-street park spaces and asked for feedback. The stakeholder catchment area is a combination of residential and commercial properties.

The aim of the consultation during the strategy development was to:

- inform stakeholders of the need to remove about 10 on-street parking on King Street (west of O’Riordan Street) in early 2023.
- gain an understanding of affected stakeholders’ current use of the existing on and off-street parking and the impact if the JV removed car spaces along a section of King Street between O’Riordan Street and the railway line.
- evaluate stakeholder feedback.

The consultation period was 23 August to 5 September 2022. Stakeholder feedback beyond 5 September 2022 will be considered as part of the construction phase feedback and complaint management process.



Stakeholder Feedback

King Street stakeholders between the rail corridor and O’Riordan Street

Businesses located along the section of King Street where works are to take place include two hotels, two carparking stations, three small businesses, a block of commercial suites and two undeveloped blocks currently used as carparking.

Of the 32 individual businesses along this section of King Street, only 7 provided written feedback about the proposal. A high percentage of the businesses that did not respond were from a block of commercial suites. These suites were contacted directly by their strata manager who requested owners/occupiers contact the project if they had concerns with the temporary removal of on-street parking.

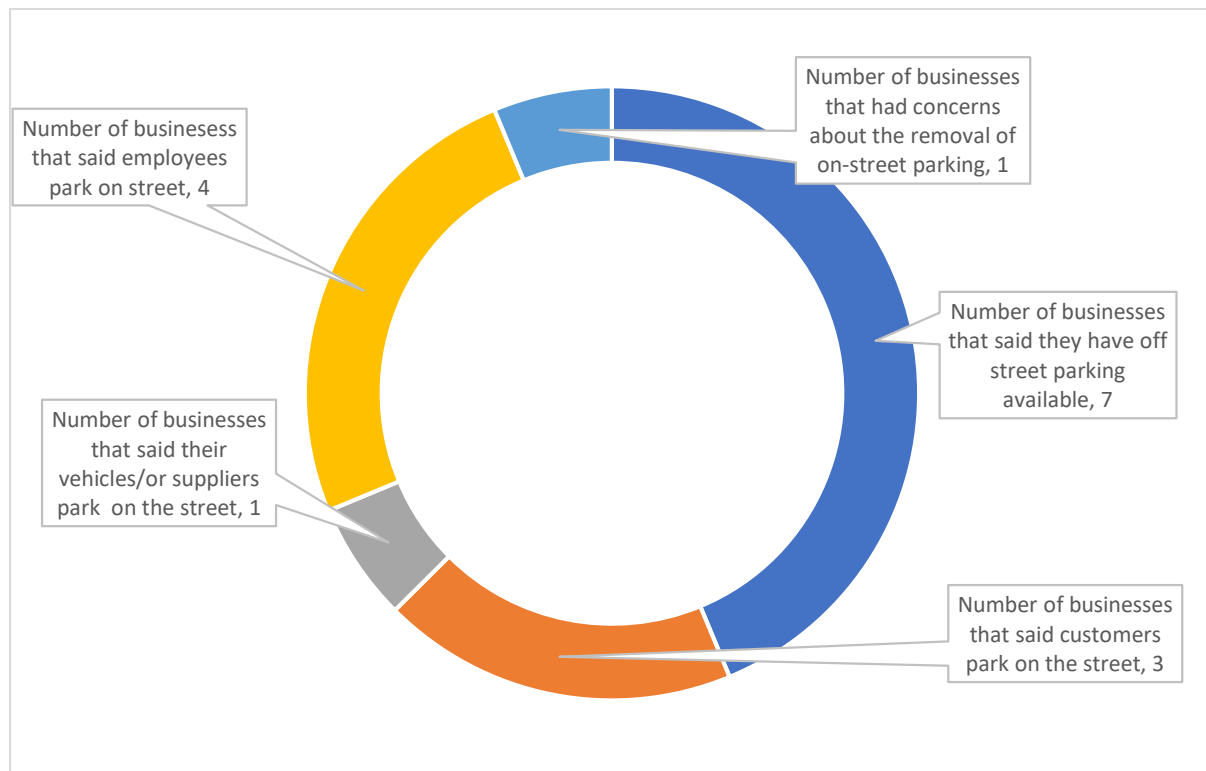


Figure 1 - results from King Street businesses

A business which did not provide written feedback, verbally noted at the time of the visit that their business heavily relies on being able to park customers cars on the street while they are waiting to get repaired.

The stakeholder with driveways nearest to the construction zone provided written feedback saying they had no issues with the removal of on-street parking as long as the driveway access was maintained at all times.

Stakeholder catchment area – east of O’Riordan Street

Residents

A fact sheet was distributed on 23 August 2022 to 300 households explaining the proposed work and need to temporarily remove approximately 10 on-street parking on a section of King Street. The residents were asked to contact the project if any member of the household parked vehicles at this location.

At the end of the consultation period, none of the residents had contacted the project to provide feedback or complain about temporarily removing on-street parking. It is worth noting that most of these properties are in high density living/high rise developments where off-street parking is available.

Businesses

Ten businesses were visited on 23 August to discuss the temporary removal of approximately 10 on-street parking on King Street. Of the 10, four properties were vacant - all businesses operating at the time of the visit said they had onsite parking and noted their business, employees or suppliers would not be impacted from the removal of on-street parking at that location.

One business verbally noted that weekend Airport users park in local streets as there were no parking inspectors patrolling at that time.

Stakeholder catchment area – west of O’Riordan Street

There are no residents located within the catchment area west of O’Riordan Street.

21 businesses were visited on 23 and 25 August west of O’Riordan Street. Of the 12 businesses which provided feedback, none had issues with temporarily removing parking from King Street.

One Ewan Street business verbally noted that most properties in the local area had off-street parking however they had concerns of a knock-on effect to neighbouring streets from removing on-street parking in King Street.

Botany Rail Duplication Line / ARTC

The Botany Rail Duplication Line / ARTC had no issues with the removal of on-street parking if the entry to the railway access gate was maintained 24/7.

Construction communication and consultation

All stakeholders on King Street will be notified prior to the start of construction. The construction communication and consultation will include:

- Two weeks prior to the commencement of work, businesses in King Street (between O’Riordan Street and the railway line) will be visited and informed of the construction start date.
- A work specific community notification will be prepared and distributed to businesses on King Street west of O’Riordan Street five days prior to start of construction.
- The construction activities will be included in the project monthly update.
- 24/7 community enquiry and complaints line will be promoted within all communication material.

Jefferson Boyd-JHG

From: Athlene Kyle <AthleneKyle@logosproperty.com>
Sent: Friday, 2 September 2022 11:28 AM
To: Jas Chaggar; Faye Rescigno-JHG
Cc: Amy Bao
Subject: RE: Property DL 4 234489

Follow Up Flag: Follow up
Flag Status: Flagged

Hi Faye

No issues from my end. We will need to notify our tenant.

Thanks
Athlene

Athlene Kyle
Senior Development Manager

M. +61 402 079 128
AthleneKyle@logosproperty.com
logosproperty.com

LOGOS



Please consider the environment before printing this email.

This e-mail is confidential and may also be privileged. If you are not the intended recipient, please delete it and notify us immediately; you should not copy or use it for any purpose, nor disclose its contents to any other person. It is your responsibility to check any attachments for viruses and defects before opening or sending them access, see our privacy policy at logosproperty.com

This email may contain information intended for the financial service clients of LOGOS Investment Manager Pty Ltd (ACN 623 281 345, AFSL 505699) and LOGOS Investment Management Pty Ltd (ACN 602 048 082, CAR 1260636) Any financial product advice is general advice and provided to wholesale clients only. See our website for further regulatory information at logosproperty.com

An ESR Group Company

From: Jas Chaggar <JasChaggar@logosproperty.com>
Sent: Thursday, 1 September 2022 4:44 PM
To: Faye Rescigno-JHG <Faye.Rescigno@jhs.com.au>; Athlene Kyle <AthleneKyle@logosproperty.com>
Cc: Amy Bao <AmyBao@logosproperty.com>
Subject: FW: Property DL 4 234489

Hi Faye,

Thanks for the update.

I have no issues with you removing on-street parking.

I will note the site opposite at 297 King Street is also owned by Perpetual Corporate Trust Limited.

This site is currently a development site. [@Athlene Kyle](#), any issues from your end if there is no street parking in front of 297 King Street?

Regards
Jas Chaggar
Property Manager
M. +61 404 400 714
JasChaggar@logosproperty.com
logosproperty.com

LOGOS



Please consider the environment before printing this email.

This e-mail is confidential and may also be privileged. If you are not the intended recipient, please delete it and notify us immediately; you should not copy or use it for any purpose, nor disclose its contents to any other person. It is your responsibility to check any attachments for viruses and defects before opening or sending them access, see our privacy policy at logosproperty.com

This email may contain information intended for the financial service clients of LOGOS Investment Manager Pty Ltd (ACN 623 281 345, AFSL 505699) and LOGOS Investment Management Pty Ltd (ACN 602 048 082, CAR 1260636) Any financial product advice is general advice and provided to wholesale clients only. See our website for further regulatory information at logosproperty.com

An ESR Group Company

From: Faye Rescigno-JHG <Faye.Rescigno@jhswh.com.au>
Sent: Thursday, 1 September 2022 3:53 PM
To: Jas Chaggar <JasChaggar@logosproperty.com>
Cc: Athlene Kyle <AthleneKyle@logosproperty.com>; Amy Bao <AmyBao@logosproperty.com>
Subject: FW: Property DL 4 234489

Caution: This is an external email and has a suspicious subject or content. Please take care when clicking links or opening attachments. When in doubt please forward the email to cyberalert@logosproperty.com for further investigation.

Hello Jas
I've spoken to the project engineer responsible for these works.

He assures me that they should be able to keep the driveway open if there are no other entrances. Having said that, there may be times when carpark users may be asked to wait for a short period as heavy equipment or machinery may need to be removed if work is taking place near the driveway.

I will be in touch with you nearer to the 2023 start date and provide an update. The team are still in the planning stages.

From your email, I take you have no issue with us removing on-street parking as long as we maintain access to your property. Is this correct?

Regards
Faye

Faye Rescigno
Place Manager
[Sydney Gateway Project](#)



A. 10 Bourke Road, Mascot NSW 2020
E. faye.rescigno@jhsw.com.au
P. 0498 538 561

From: Faye Rescigno-JHG
Sent: Thursday, 1 September 2022 11:27 AM
To: Jas Chaggar <JasChaggar@logosproperty.com>
Cc: Athlene Kyle <AthleneKyle@logosproperty.com>; Amy Bao <AmyBao@logosproperty.com>
Subject: RE: Property DL 4 234489

Hello Jas

Thank you for getting back to me.

I've relayed your feedback to the construction team who will consider their options. They informed me the 6-8 weeks is worst case as the activities needed the on-street parking may only take a number of days. Once I get an update from the construction team I will be in touch.

Meanwhile, I've attached a notification for your information.

Regards
Faye

Faye Rescigno
Place Manager
[Sydney Gateway Project](#)



A. 10 Bourke Road, Mascot NSW 2020
E. faye.rescigno@jhsw.com.au
P. 0498 538 561

From: Jas Chaggar <JasChaggar@logosproperty.com>
Sent: Thursday, 1 September 2022 10:12 AM
To: Faye Rescigno-JHG <Faye.Rescigno@jhsw.com.au>
Cc: Athlene Kyle <AthleneKyle@logosproperty.com>; Amy Bao <AmyBao@logosproperty.com>
Subject: FW: Property DL 4 234489
Importance: High

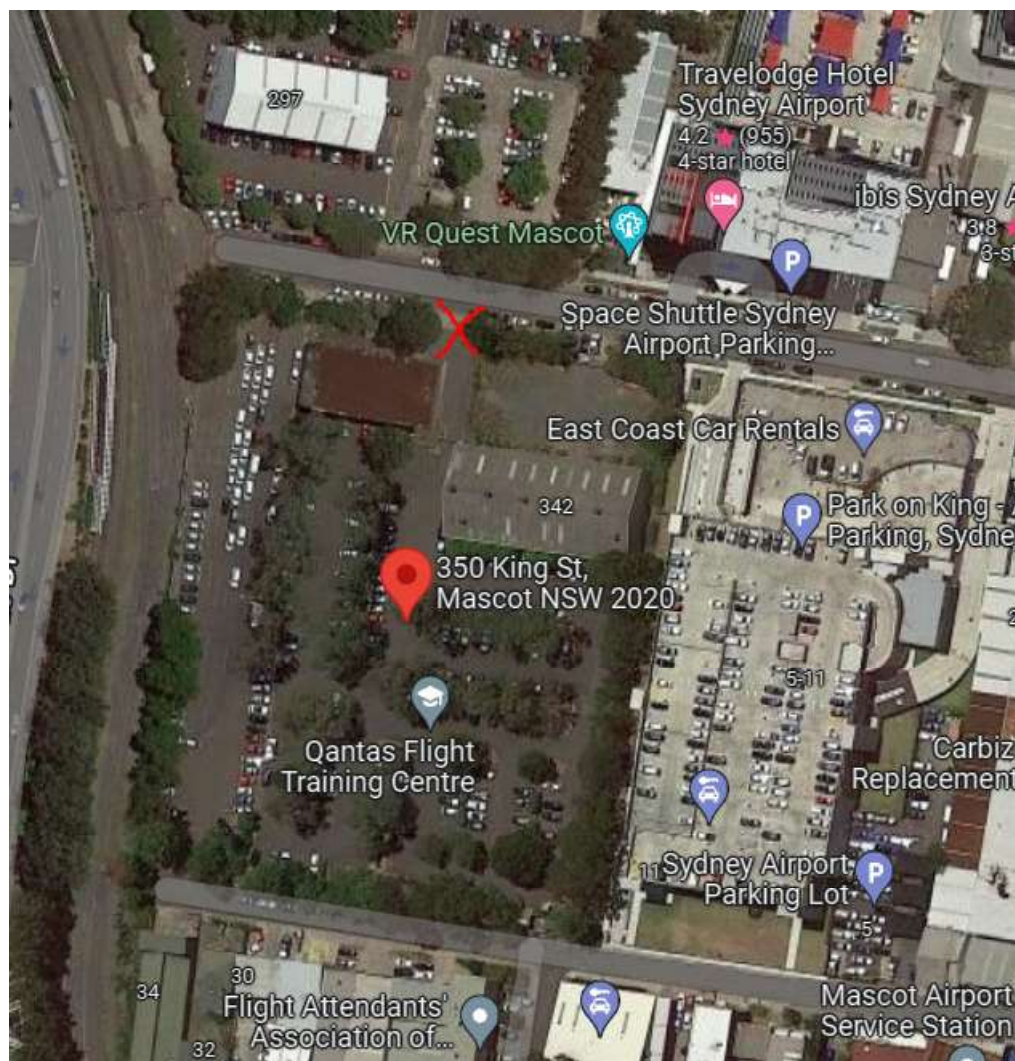
Hi Faye,

I'm the property manager for the above mentioned property – 350 King Street Mascot.

Regarding the works mentioned in your email, could you provide the full scope of these works as well as the exact location of where the pipe will be laid on King Street in early 2023.

This property is currently being used as a carpark so we can't have the entry/ exit blocked off.

FYI – the Cross in red in the below image is the entry/ exit to the carpark.



Regards

Jas Chaggar

Property Manager

M. +61 404 400 714

JasChaggar@logosproperty.com

logosproperty.com

LOGOS



Please consider the environment before printing this email.

This e-mail is confidential and may also be privileged. If you are not the intended recipient, please delete it and notify us immediately; you should not copy or use it for any purpose, nor disclose its contents to any other person. It is your responsibility to check any attachments for viruses and defects before opening or sending them access, see our privacy policy at logosproperty.com

This email may contain information intended for the financial service clients of LOGOS Investment Manager Pty Ltd (ACN 623 281 345, AFSL 505699) and LOGOS Investment Management Pty Ltd (ACN 602 048 082, CAR 1260636) Any financial product advice is general advice and provided to wholesale clients only. See our website for further regulatory information at logosproperty.com

An ESR Group Company

From: Faye Rescigno-JHG <Faye.Rescigno@jhs.com.au>
Sent: Thursday, 1 September 2022 8:59 AM
To: CCS Custody <CCSCustody@perpetual.com.au>
Subject: FW: Property DL 4 234489

Hello

I'm following up on an enquiry about Property DL 4 234489 as per email below. We are planning to remove on-street parking at the front of DL 4 23489 to set up a construction zone.

Our work will impede access to this property for a period of 8 weeks in early 2023.

Please contact me to confirm there are no issues with restricting access to this property during our construction period.

Regards
Faye

Faye Rescigno
Place Manager
[Sydney Gateway Project](#)



A. 10 Bourke Road, Mascot NSW 2020
E. faye.rescigno@jhs.com.au
P. 0498 538 561

From: Investigations <Investigations@perpetual.com.au>
Sent: Monday, 29 August 2022 5:04 PM
To: Faye Rescigno-JHG <Faye.Rescigno@jhs.com.au>
Subject: RE: Property DL 4 234489

Dear Ms Rescigno,

Thank you for your email.

We have forwarded your enquiry to the relevant team and have instructed them to respond to your request. Please direct all future enquiries in relation to this matter to CCSCustody@perpetual.com.au.

Regards,

Swetha Voleti | Paralegal – Financial Services | Legal, Audit, Risk CoSec & Compliance
Perpetual | 123 Pitt Street, Sydney | Australia
Phone +612 9229 9074 |
www.perpetual.com.au



Please consider the environment before printing this email

From: Faye Rescigno-JHG <Faye.Rescigno@jhswh.com.au>

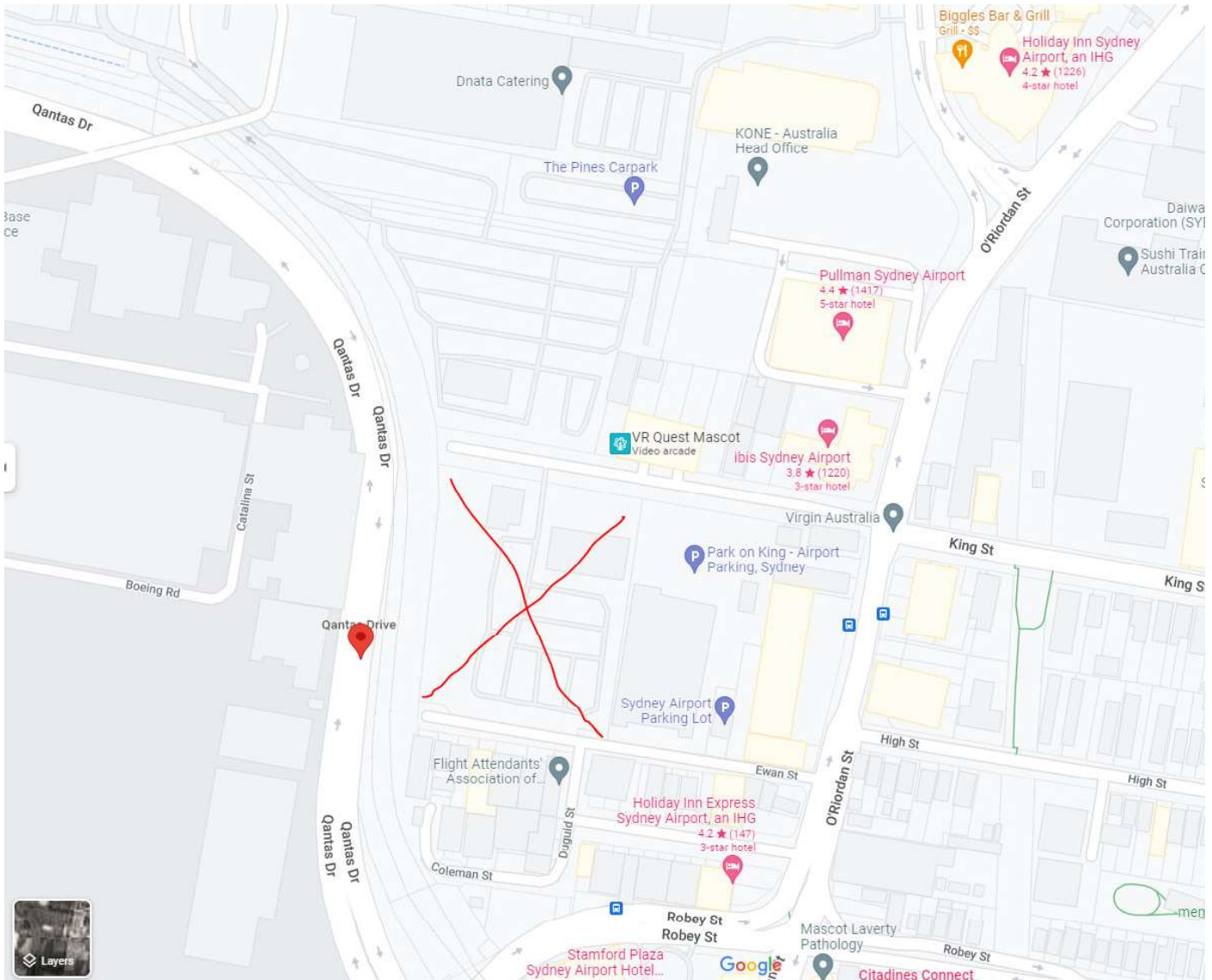
Sent: Wednesday, 24 August 2022 8:07 AM

To: Investigations <Investigations@perpetual.com.au>

Subject: RE: Property DL 4 234489

Hello Swetha,

We believe the street numbers are 342 and 364 King Street, Mascot. Below is an image of the exact location of the parcel of land (crossed out in red).



Regards

Faye

Faye Rescigno

Place Manager

[Sydney Gateway Project](#)



A. 10 Bourke Road, Mascot NSW 2020
E. faye.rescigno@jhswh.com.au
P. 0498 538 561

From: Investigations <Investigations@perpetual.com.au>
Sent: Tuesday, 23 August 2022 6:32 PM
To: Faye Rescigno-JHG <Faye.Rescigno@jhswh.com.au>
Subject: RE: Property DL 4 234489

Dear Ms Rescigno,

Thank you for your email.

To assist us in identifying a property record, could you please provide the exact address of the property on King Street, Mascot NSW.

We look forward to hearing from you soon.

Regards,

Swetha Voleti | Paralegal – Financial Services | Legal, Audit, Risk CoSec & Compliance
Perpetual | 123 Pitt Street, Sydney | Australia
Phone +612 9229 9074 |
www.perpetual.com.au



Please consider the environment before printing this email

From: Faye Rescigno-JHG <Faye.Rescigno@jhswh.com.au>
Sent: Monday, 22 August 2022 12:28 PM
To: Documents Out Enquiries <Documents_Out_Enquiries@perpetual.com.au>
Subject: Property DL 4 234489

To Whom It May Concern,

I'm the community manager for a section of the Sydney Gateway Project, a new toll-free connection from St Peters Interchange to improve journey time s to Sydney Airport, the M5 and Eastern Distributor. Please refer to our website for me project information [Sydney Gateway interactive portal \(nsw.gov.au\)](https://www.nsw.gov.au/sydney-gateway-interactive-portal)

One of our activities will temporarily impact a commercial property in King Street, Mascot (DP 4 234489) which we understand is held by Perpetual Corporate Trust Limited.

The work will plan to carry out in King Street Mascot involves welding and stringing a large metal pipe, which will be pulled through a drilled section beneath the railway line. This pipe will be laid on the road at the front of this property and likely to affect access to the property for about 2 months in early 2023.

We are writing to understand if this restriction of access would cause a major concern at this time.

Feel free to call me if you have any questions or would like to discuss this matter further.

Sincerely,
Faye Rescigno

Faye Rescigno



A. 10 Bourke Road, Mascot NSW 2020
E. faye.rescigno@jhswh.com.au
P. 0498 538 561

This email has been scanned by the Symantec Email Security.cloud service.
For more information please visit <http://www.symanteccloud.com>

If you don't want to continue to receive emails from Perpetual Group (Perpetual Limited ABN 86 000 431 827, including its subsidiaries), please notify the sender of this message and we will update our records.

The following Perpetual Limited subsidiaries hold AFSL and RSE licences: Perpetual Investment Management Limited AFSL 234426; Perpetual Corporate Trust Limited AFSL 392673; Perpetual Trustee Company Limited AFSL 236643; Perpetual Trust Services Limited AFSL 236648; The Trust Company Limited AFSL 235148, The Trust Company (Australia) Limited AFSL 235145, The Trust Company (Nominees) Limited AFSL 235140, The Trust Company (PTAL) Limited AFSL 235128, The Trust Company (RE Services) Limited AFSL 235150, The Trust Company (Sydney Airport) Limited AFSL 301162, Laminar Capital Pty Ltd AFSL 476686; and Perpetual Superannuation Limited AFSL 225246 RSE L0003315.

PRIVILEGED AND CONFIDENTIAL This email and any attachments may contain copyright material or confidential information. The confidential information may be subject to legal professional privilege. It should not be distributed, disclosed or copied to anyone without the approval of the sender. Legal professional privilege is not waived or lost by inadvertent disclosure or communication in this email and attachments. If you receive this email and you are not the intended addressee (or responsible for delivery of the email to the addressee), please disregard the contents of the email, delete the email and notify the sender immediately.

This email has been scanned by the Symantec Email Security.cloud service.
For more information please visit <http://www.symanteccloud.com>

This email has been scanned by the Symantec Email Security.cloud service.
For more information please visit <http://www.symanteccloud.com>

If you don't want to continue to receive emails from Perpetual Group (Perpetual Limited ABN 86 000 431 827, including its subsidiaries), please notify the sender of this message and we will update our records.

The following Perpetual Limited subsidiaries hold AFSL and RSE licences: Perpetual Investment Management Limited AFSL 234426; Perpetual Corporate Trust Limited AFSL 392673; Perpetual Trustee Company Limited AFSL 236643; Perpetual Trust Services Limited AFSL 236648; The Trust Company Limited AFSL 235148, The Trust Company (Australia) Limited AFSL 235145, The Trust Company (Nominees) Limited AFSL 235140, The Trust Company (PTAL) Limited AFSL 235128, The Trust Company (RE Services) Limited AFSL 235150, The Trust Company (Sydney Airport) Limited AFSL 301162, Laminar Capital Pty Ltd AFSL 476686; and Perpetual Superannuation Limited AFSL 225246 RSE L0003315.

PRIVILEGED AND CONFIDENTIAL This email and any attachments may contain copyright material or confidential information. The confidential information may be subject to legal professional privilege. It should not be distributed, disclosed or copied to anyone without the approval of the sender. Legal professional privilege is not waived or lost by inadvertent disclosure or communication in this email and attachments. If you receive this email and you are not the intended addressee (or responsible for delivery of the email to the addressee), please disregard the contents of the email, delete the email and notify the sender immediately.

This email has been scanned by the Symantec Email Security.cloud service.
For more information please visit <http://www.symanteccloud.com>

This email has been scanned by the Symantec Email Security.cloud service.
For more information please visit <http://www.symanteccloud.com>

If you don't want to continue to receive emails from Perpetual Group (Perpetual Limited ABN 86 000 431 827, including its subsidiaries), please notify the sender of this message and we will update our records.

The following Perpetual Limited subsidiaries hold AFSL and RSE licences: Perpetual Investment Management Limited AFSL 234426; Perpetual Corporate Trust Limited AFSL 392673; Perpetual Trustee Company Limited AFSL 236643; Perpetual Trust Services Limited AFSL 236648; The Trust Company Limited AFSL 235148, The Trust Company (Australia) Limited AFSL 235145, The Trust Company (Nominees) Limited AFSL 235140, The Trust Company (PTAL) Limited AFSL 235128, The Trust Company (RE Services) Limited AFSL 235150, The Trust Company (Sydney Airport) Limited AFSL 301162, Laminar Capital Pty Ltd AFSL 476686; and Perpetual Superannuation Limited AFSL 225246 RSE L0003315.

PRIVILEGED AND CONFIDENTIAL This email and any attachments may contain copyright material or confidential information. The confidential information may be subject to legal professional privilege. It should not be distributed, disclosed or copied to anyone without the approval of the sender. Legal professional privilege is not waived or lost by inadvertent disclosure or communication in this email and attachments. If you receive this email and you are not the intended addressee (or responsible for delivery of the email to the addressee), please disregard the contents of the email, delete the email and notify the sender immediately.

This email has been scanned by the Symantec Email Security.cloud service.
For more information please visit <http://www.symanteccloud.com>

This email has been scanned for spam and viruses by Proofpoint Essentials. Click [here](#) to report this email as spam.

Appendix C. Council Consultation

Alexander Masima-JHG - Council Consultation

From: Colin Mable
Sent: Thursday, 11 August 2022 11:53 AM
To: Lee Vossen-JHG
Subject: RE: King Street Car parking occupation
Attachments: Work Activities on Council Sites Application.PDF (2022).PDF

Lee,

I refer to your email below seeking advice to temporarily occupy a section of King Street Mascot for works on the Gateway Project.

Please be advised Council would be agreeable to this temporary road closure and will issue a Permit.

To initiate this Permit would you please complete the above Works Activity Form (Cover page plus section 1(a)) and pay an application fee of \$286. This Permit can be issued within 1 week.

If you have any further questions with this matter please come back to me.

Cheers



Colin Mable Executive Engineer
444 – 446 Princes Highway Rockdale
M 0412 915 287
E colin.mable@bayside.nsw.gov.au **W** www.bayside.nsw.gov.au

From: Lee Vossen-JHG <Lee.Vossen@jhswh.com.au>
Sent: Thursday, 11 August 2022 11:38 AM
To: Colin Mable <Colin.Mable@bayside.nsw.gov.au>
Cc: Alex Major-JHG <Alex.Major@jhswh.com.au>; Robert Muir-JHG <Robert.Muir@jhswh.com.au>; Alan Ninan-JHG <Alan.Ninan@jhswh.com.au>
Subject: King Street Car parking occupation

Hi Colin

The project has identified the need to occupy car parking spaces on King Street for a duration of 6-8 weeks. Could we please arrange a discussion on the council requirements for such an activity. I have attached a mark-up for reference.

Kind Regards

Lee Vossen
Traffic Manager
[Sydney Gateway Project](#)



From: Customer Service Applications
To: Alexander Masima-JHG Customer Service Applications
Subject: Urgent Payment Required ASAP - URGENT Council Application - King St Mascot - Sydney Gateway Project works
Date: Tuesday, 27 September 2022 11:15:05 AM
Attachments: image007.png
image001.png
image004.png
image005.png
image006.png

Dear Alexander

Council has received your application for a King St Mascot - Sydney Gateway Project works.

Your application has now been lodged and your Application Number is **TRC-2022/69**. In order to progress this application further payment of \$1988.00 is required. Please be advised that all payments made over the phone are credit card payments and will incur a 0.5% merchant fee.

Please call our Customer Service Contact Centre on 1300 581 299 to make your payment between the hours of 8.30am to 4.00pm Monday to Friday (not including Public Holidays).

Please quote your application number to our operators when making a payment.

Kind Regards



Nada Nasr Customer Service Officer
444-446 Princes Highway, Rockdale NSW 2216
T 1300 581 299
E nada.nasr@bayside.nsw.gov.au W www.bayside.nsw.gov.au

From: Alexander Masima-JHG <Alexander.Masima@jhs.com.au>
Sent: Tuesday, 27 September 2022 10:53 AM
To: Customer Service Applications <CS.applications@bayside.nsw.gov.au>
Subject: CM: RE: URGENT Council Application - King St Mascot - Sydney Gateway Project works
Importance: High

Good morning,

Please find the updated application for your urgent review please let me know should you require further info or action thank you

Kind Regards

Alexander Masima
Traffic Officer
Sydney Gateway Project



A. 10 Bourke Rd, Mascot NSW 2020
E Alexander.Masima@jhs.com.au
M. 0455 624 580

From: Customer Service Applications <CS.applications@bayside.nsw.gov.au>
Sent: Tuesday, 27 September 2022 9:59 AM
To: Alexander Masima-JHG <Alexander.Masima@jhs.com.au>
Cc: Customer Service Applications <CS.applications@bayside.nsw.gov.au>
Subject: FW: URGENT Council Application - King St Mascot - Sydney Gateway Project works
Importance: High

Alexander

Before we process this application, you need to provide the following.

Need to provide how many metres they are closing in King Street (enter this on application).

And how many metres you are closing.

				Please provide documents below to Council on a non-returnable USB drive		
1(a)	Road, Footpath and Road Related Area Closure – Do you plan on closing any part of the road, footpath or a road related area (e.g. car park) to vehicle or pedestrian traffic?	Yes <input checked="" type="checkbox"/>	No <input type="checkbox"/>	<ul style="list-style-type: none">• Traffic Management Plan or Traffic Control Plan• Certificate of Currency (Public Liability \$20million minimum)• Local Police approval (if applicable)• Transit Systems Authority or Bus Operators approval (if applicable)• Sydney Trains approval (if applicable)• TfNSW approval (if applicable)	<input type="checkbox"/> <input type="checkbox"/> <input type="checkbox"/> <input type="checkbox"/> <input type="checkbox"/> <input type="checkbox"/>	
Starting Date		28/09/2022	Finishing Date	21/10/2022	No. of Days	23
Exact location or street name for closure						
No. of lanes closed	Footpath _____ Roadway _____	Length of closure (lineal metres)	Footpath _____ Roadway _____	No of Council owned parking spaces to be occupied (if applicable)		
Description of works		Please refer to pdf with detailed scope of works descriptions and stages of the works				



Nada Nasr Customer Service Officer
444-446 Princes Highway, Rockdale NSW 2216
T 1300 581 299
E nada.nasr@bayside.nsw.gov.au W www.bayside.nsw.gov.au

From: Alexander Masima-JHG <Alexander.Masima@jhs.com.au>

Sent: Monday, 26 September 2022 12:13 PM

To: Customer Service Applications <CS.applications@bayside.nsw.gov.au>

Subject: URGENT Council Application - King St Mascot - Sydney Gateway Project works

Importance: High

Hi Bayside Council Team,

Hope all is well with you today!

We have urgent utility works that is outside our current Sydney Gateway Project footprint which we will require us to apply for a permit to complete our scope of works. If its possible as these works are critical to review at your earliest convenience that would be much appreciated please as we are looking to begin shoring within the week pending Bayside council approval. Please see the attached documents as advised by Colin for work activities on council site application section 1A). I have also included a detailed scope of works staged diagram as the attachments to assist in understanding how we are going about the works.

Really appreciate your time and hope to hear a response soon, thank you!

Kind Regards

Alexander Masima

Traffic Officer

[Sydney Gateway Project](#)



A. 10 Bourke Rd, Mascot NSW 2020

E. Alexander.Masima@shw.com.au

M. 0455 624 580

This email is intended solely for the addressee and may contain confidential information. Any disclosure, copying or distribution to others is not permitted without agreement of the sender. Council does not represent, warrant or guarantee this email is free of errors, virus or interference. Any views expressed or commitments made in this email are those of the individual sender, and may not necessarily be those of Council. With regard to any personal information that may be included in this email, Council complies with the Privacy and Personal Information Protection Act, and expects the recipient to do likewise. This email may be made available to the public under various legislation.

This email is intended solely for the addressee and may contain confidential information. Any disclosure, copying or distribution to others is not permitted without agreement of the sender. Council does not represent, warrant or guarantee this email is free of errors, virus or interference. Any views expressed or commitments made in this email are those of the individual sender, and may not necessarily be those of Council. With regard to any personal information that may be included in this email, Council complies with the Privacy and Personal Information Protection Act, and expects the recipient to do likewise. This email may be made available to the public under various legislation.

E. lee.vossen@jhswh.com.au

M. 0438 579 583

This email is intended solely for the addressee and may contain confidential information. Any disclosure, copying or distribution to others is not permitted without agreement of the sender. Council does not represent, warrant or guarantee this email is free of errors, virus or interference. Any views expressed or commitments made in this email are those of the individual sender, and may not necessarily be those of Council. With regard to any personal information that may be included in this email, Council complies with the Privacy and Personal Information Protection Act, and expects the recipient to do likewise. This email may be made available to the public under various legislation.