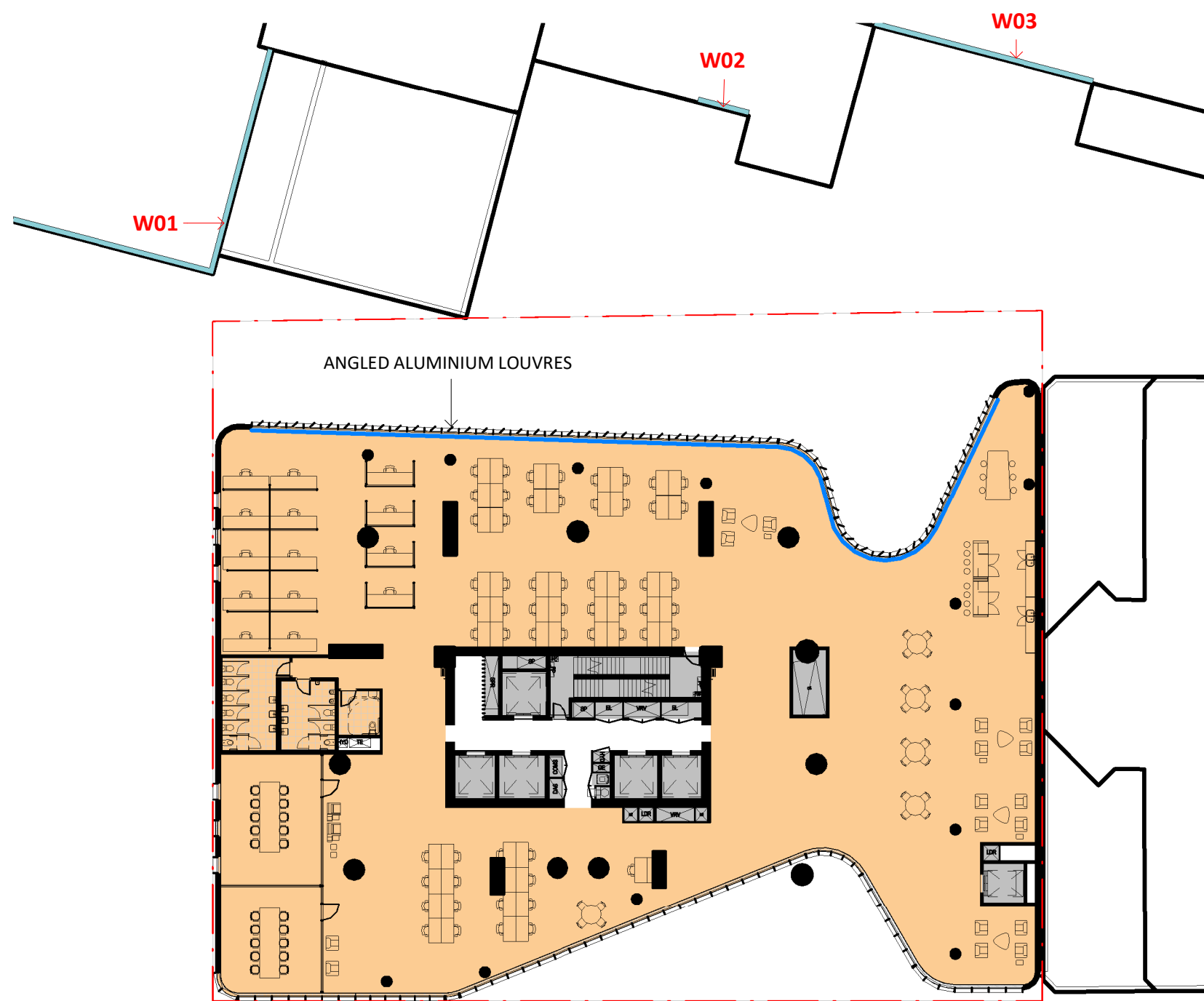
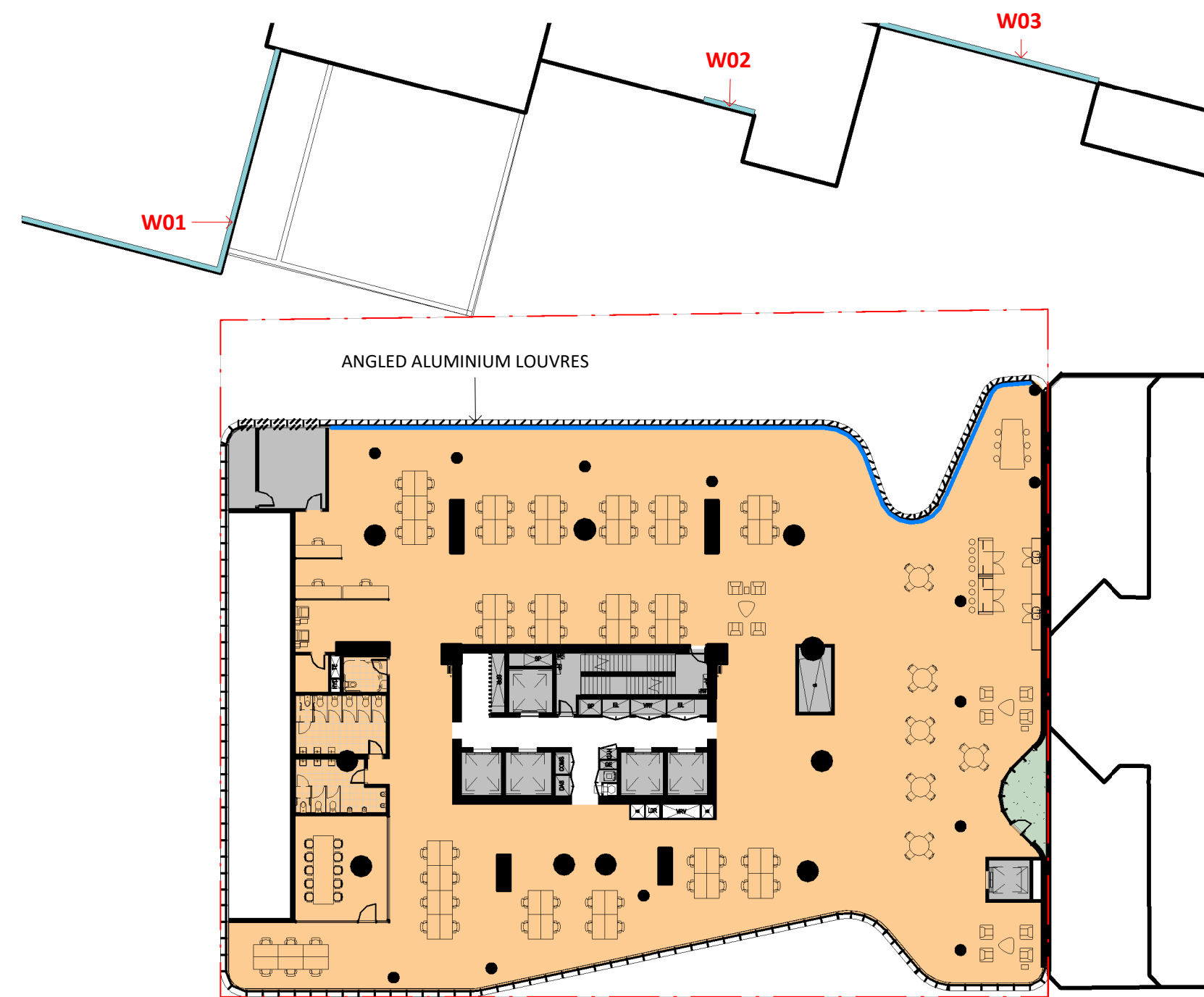


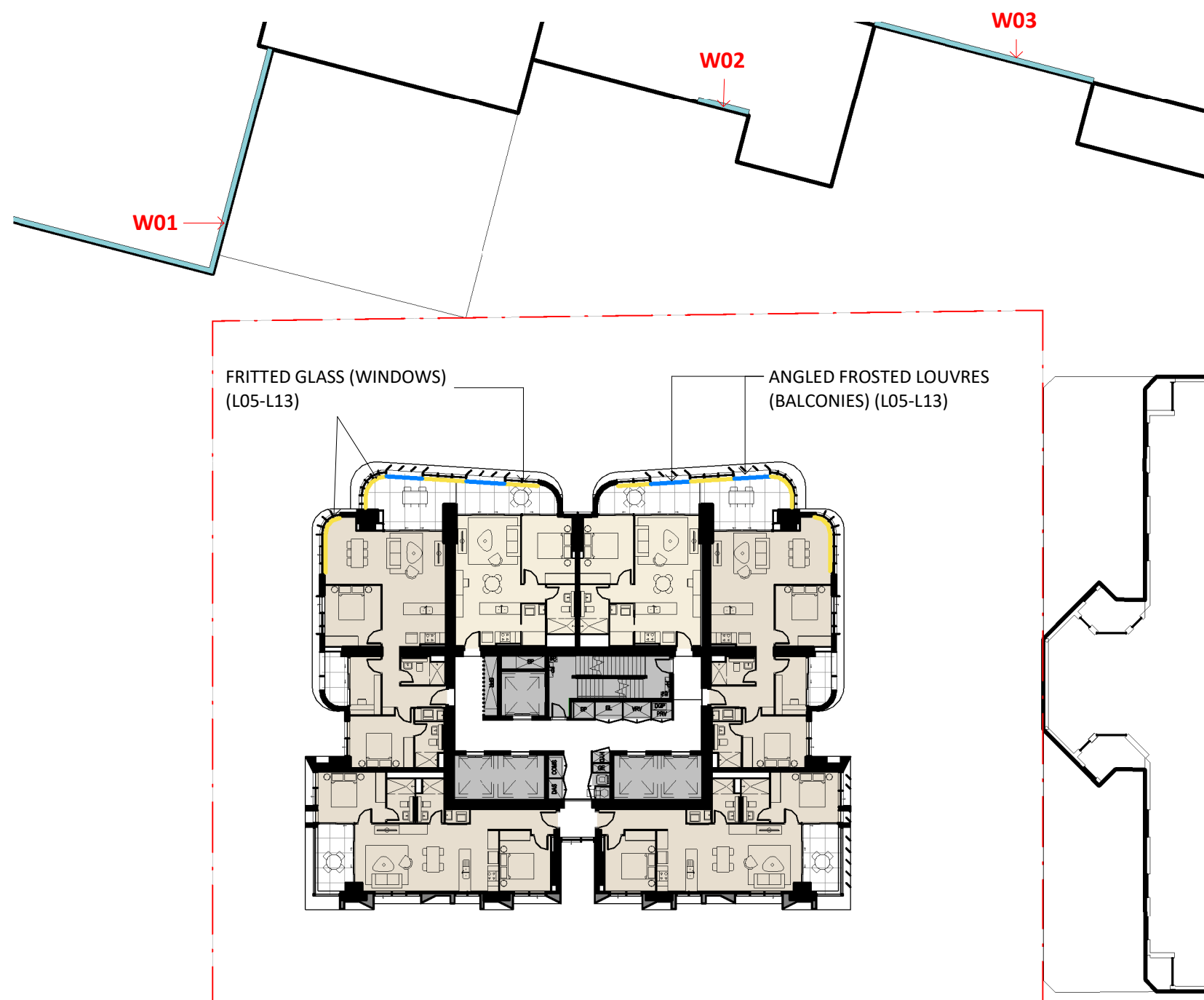
1 LEVEL 01 PLAN
1 : 300



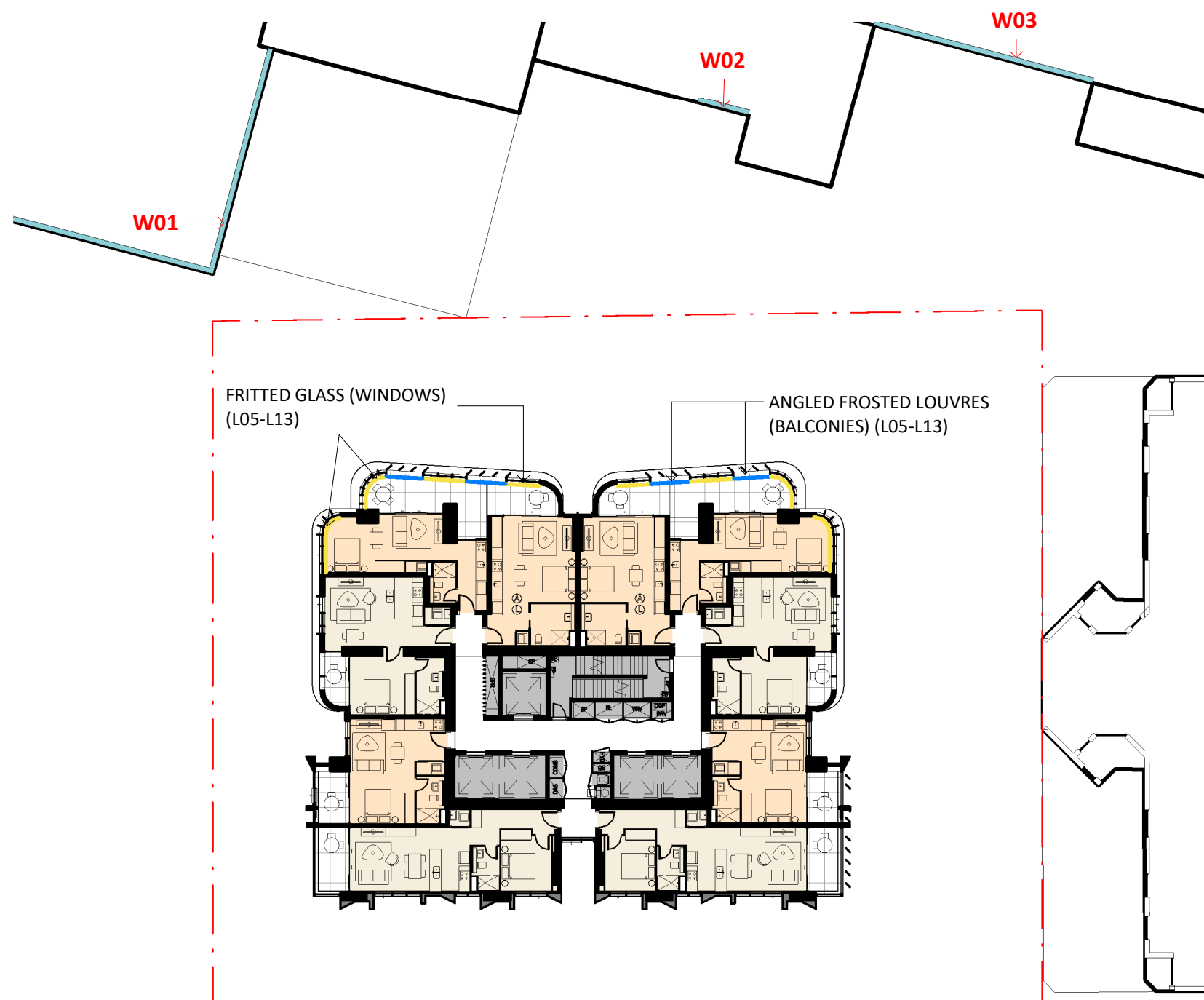
2 LEVEL 02 PLAN
1 : 300



3 LEVEL 03 PLAN
1 : 300

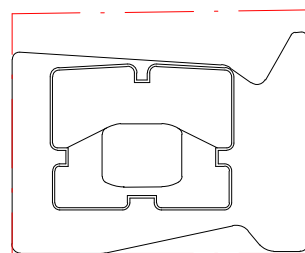


4 LEVEL 05-08
1 : 300

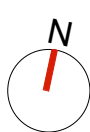


5 LEVEL 09-14
1 : 300

Key Plan:



HASSALL STREET



Drawing Disclaimer:

Do not scale from drawings.
Verify all dimensions on site before commencing work.
Copying or reproduction of this drawing is strictly prohibited without the consent of PTW Architects

Note

PTW takes no responsibility for external building elements. Anything connected with any design, materials selection, construction or installation of any cladding, facade or external building element must be checked by and remains the responsibility of others, including suitably qualified experts as may be required.

A SCREENING - NORTHERN FACADE

Rev Amendment

PTW 21.10.2022

By Chk* Date
Reg. Arch

Consultants

Design Confidence
E-Lab
FCAD
Gardner Group
Webber Design
ADP Consulting
Think Planners
Positive Traffic
Windtech

Client

GURNER™
GROUP

GQ Hassall Street Pty Ltd
3 Goldman Lane, Double Bay, NSW 2028

Architect

PTW Architects
Level 11, 88 Phillip Street
Sydney NSW 2000 Australia
T +61 2 9232 5877
ptw.com.au

Peddle Thorp & Walker P/L
ABN 23 000 454 624
trading as PTW Architects

NSW Nominated Architects
S Parsons Architect No.6098
D Jones Architect No.4778

PTW

0 1 2 5 8m
@ A1 1 : 300

Project PA030501
12 Hassall St
12 Hassall St, Parramatta

Status

Title
SK

SCREENING - NORTHERN
FACADE 2
Drawing Number

SK-1032

Revision

A

24/10/2022 4:40:21 PM

Autodesk Docs://12 Hassall Street Gurner/PA030501_12HassallStGurner_AA_A1_D0.rvt