

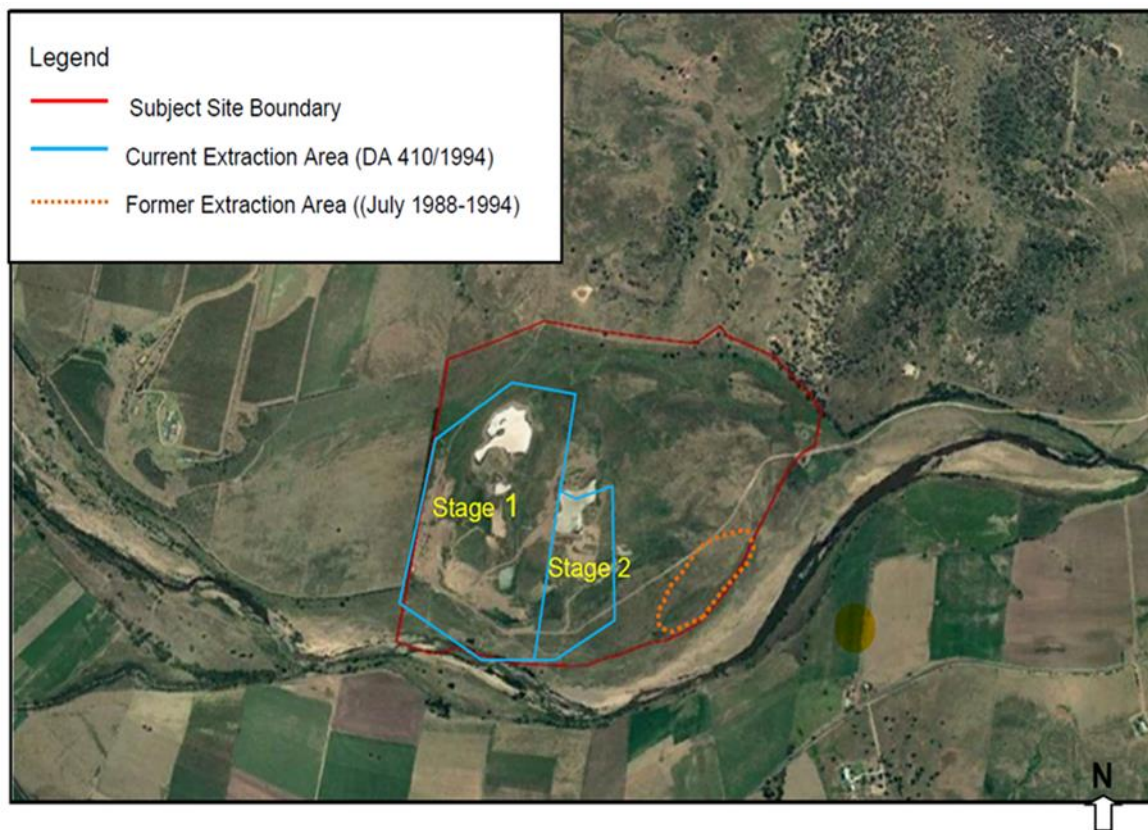
Department of Planning and Environment

Inconsistencies in of both Project and disturbance boundaries have been identified within the EIS and RTS.

The Department requests confirmation of the:

- Project Boundary; and
- Disturbance Boundary.

Below are examples of where the inconsistent boundaries have been identified.



EIS Figure 2: History of Site Operations

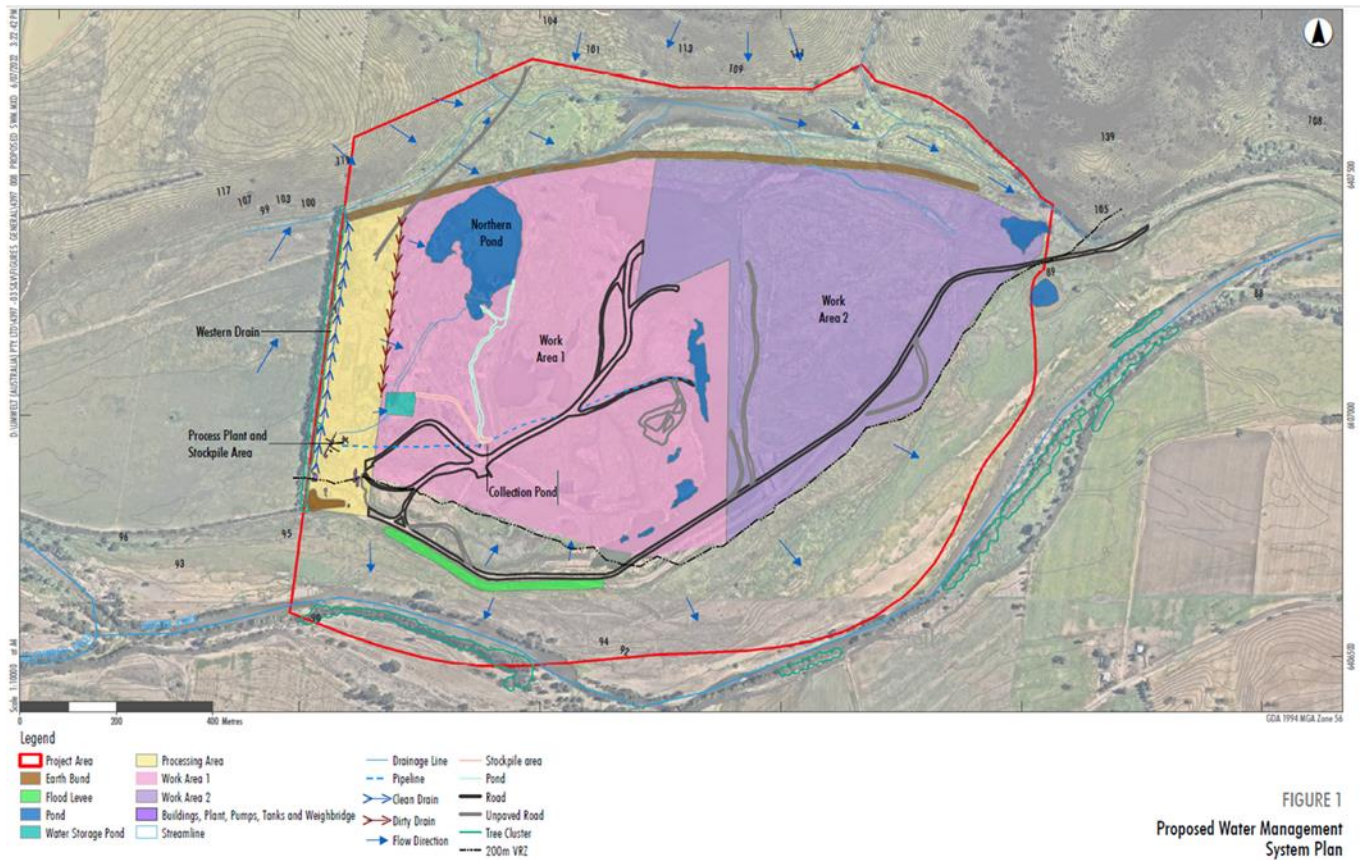
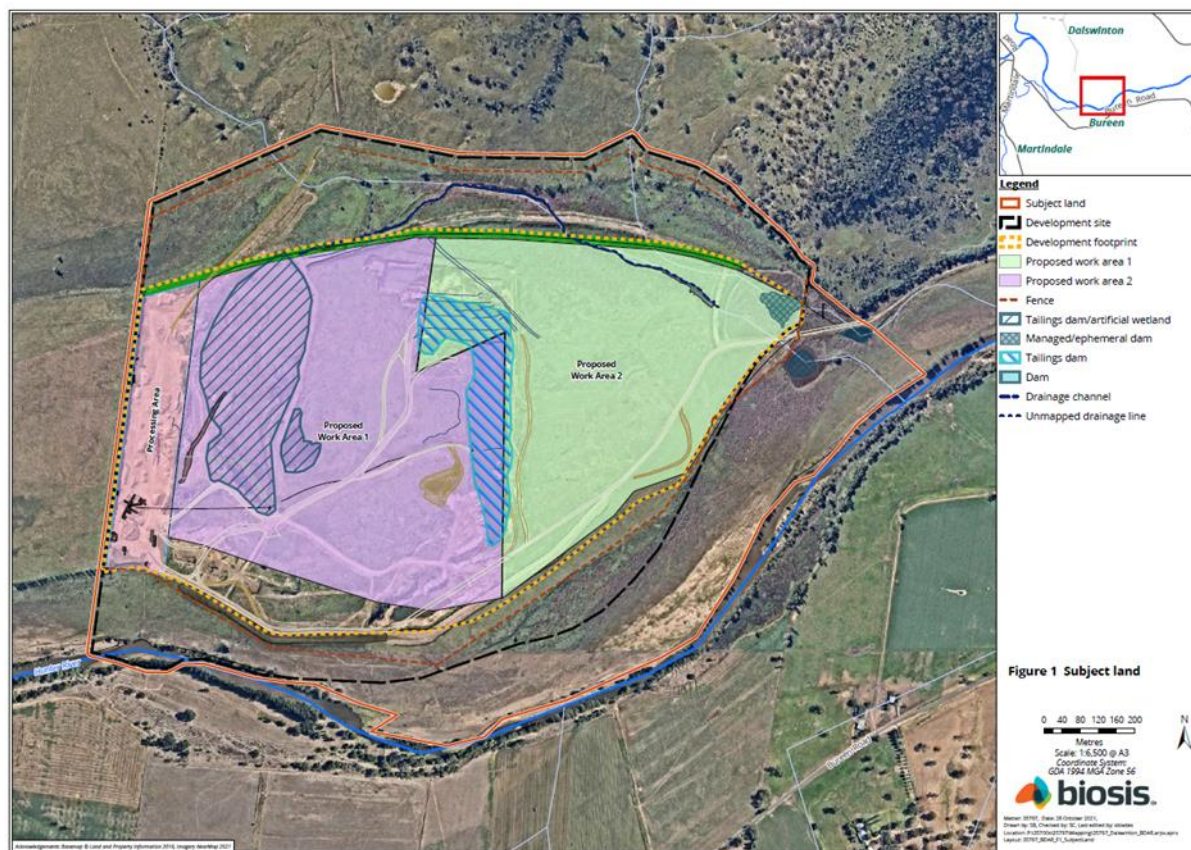
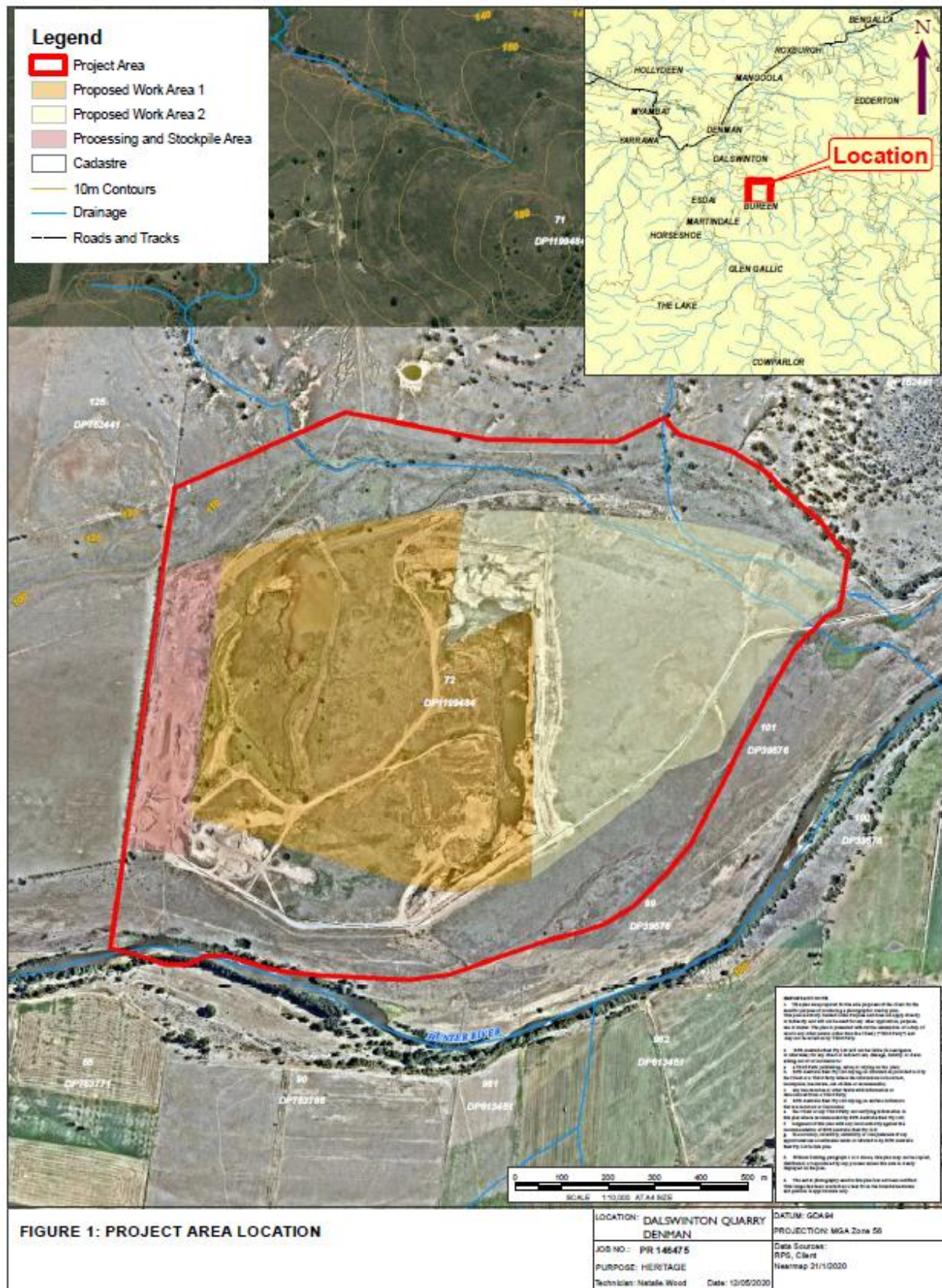


FIGURE 1
Proposed Water Management
System Plan

RTS Appendix D Figure 1: Proposed Water Management System Plan





EIS Appendix K Figure 1: Project Location