

OVERALL DEVELOPMENT DATA

Total Site Area.	558,323 m <sup>2</sup>
Mamre Rd Reserve Area	14,004 m <sup>2</sup>
Rev. Boundary Site Area	544,319 m <sup>2</sup>
Access Roads Area	43,953 m <sup>2</sup>
Future Roads Area	3,570 m <sup>2</sup>
Creek Riparian Area	29,718 m <sup>2</sup>
Retained Riparian Area	4,042 m <sup>2</sup>
Basin Lot Area	18,130 m <sup>2</sup>
Total Developable Area	444,906 m <sup>2</sup>
Total Office Area (incl. dock off.)	11,050 m <sup>2</sup>
Total Warehouse Area	232,381 m <sup>2</sup>
Total Building Area	243,431 m <sup>2</sup>
Restriction on User Area	4,613 m <sup>2</sup>

WAREHOUSE 1

Site Area	61,039 m <sup>2</sup>
Offices	900 m <sup>2</sup>
Warehouse	32,686 m <sup>2</sup>
Dock Office	300 m <sup>2</sup>
Total GFA	33,886 m <sup>2</sup>
Carpark Provided	167

WAREHOUSE 2

Site Area	40,172 m <sup>2</sup>
Offices	1,500 m <sup>2</sup>
Warehouse	22,595 m <sup>2</sup>
Dock Office	200 m <sup>2</sup>
Total GFA	24,295 m <sup>2</sup>
Carpark Provided	150

WAREHOUSE 3

Site Area	42,755 m <sup>2</sup>
Offices	700 m <sup>2</sup>
Warehouse	20,735 m <sup>2</sup>
Dock Office	100 m <sup>2</sup>
Total GFA	21,535 m <sup>2</sup>
Carpark Provided	89

WAREHOUSE 4

Site Area	41,365 m <sup>2</sup>
Offices	750 m <sup>2</sup>
Warehouse	18,070 m <sup>2</sup>
Dock Office	100 m <sup>2</sup>
Total GFA	18,920 m <sup>2</sup>
Carpark Provided	93

WAREHOUSE 5

Site Area	28,160 m <sup>2</sup>
Offices	650 m <sup>2</sup>
Warehouse	12,050 m <sup>2</sup>
Dock Office	100 m <sup>2</sup>
Total GFA	12,800 m <sup>2</sup>
Carpark Provided	60

WAREHOUSE 6

Site Area	37,371 m <sup>2</sup>
Offices	750 m <sup>2</sup>
Warehouse	22,490 m <sup>2</sup>
Dock Office	100 m <sup>2</sup>
Total GFA	23,340 m <sup>2</sup>
Carpark Provided	106

WAREHOUSE 7

Site Area	37,622 m <sup>2</sup>
Offices	750 m <sup>2</sup>
Warehouse	21,450 m <sup>2</sup>
Dock Office	100 m <sup>2</sup>
Total GFA	22,300 m <sup>2</sup>
Carpark Provided	100

WAREHOUSE 8

Site Area	49,112 m <sup>2</sup>
Offices	1,300 m <sup>2</sup>
Warehouse	27,160 m <sup>2</sup>
Dock Office	200 m <sup>2</sup>
Total GFA	28,660 m <sup>2</sup>
Carpark Provided	160

WAREHOUSE 9

Site Area	35,145 m <sup>2</sup>
Offices	750 m <sup>2</sup>
Warehouse	17,355 m <sup>2</sup>
Dock Office	100 m <sup>2</sup>
Total GFA	18,205 m <sup>2</sup>
Carpark Provided	85

WAREHOUSE 10

Site Area	33,332 m <sup>2</sup>
Offices	750 m <sup>2</sup>
Warehouse	17,450 m <sup>2</sup>
Dock Office	100 m <sup>2</sup>
Total GFA	18,300 m <sup>2</sup>
Carpark Provided	87

WAREHOUSE 11

Site Area	38,800 m <sup>2</sup>
Offices	750 m <sup>2</sup>
Warehouse	20,340 m <sup>2</sup>
Dock Office	100 m <sup>2</sup>
Total GFA	21,190 m <sup>2</sup>
Carpark Provided	90

\*Areas are measured to future Mamre Rd boundary in red  
\*\*All areas subject to survey



OVERALL DEVELOPMENT DATA

Total Site Area	558,323 m <sup>2</sup>
Mamre Rd Reserve Area	14,004 m <sup>2</sup>
Rev. Boundary Site Area	544,319 m <sup>2</sup>
Access Roads Area	35,718 m <sup>2</sup>
Future Roads Area	11,805 m <sup>2</sup>
Creek Riparian Area	29,718 m <sup>2</sup>
Retained Riparian Area	4,042 m <sup>2</sup>
Basin Lot Area	18,130 m <sup>2</sup>
Total Developable Area	444,906 m <sup>2</sup>
Restriction on User Area	4,613 m <sup>2</sup>

WAREHOUSE 1	
Site Area	61,039 m <sup>2</sup>
Offices	900 m <sup>2</sup>
Warehouse	32,686 m <sup>2</sup>
Dock Office	300 m <sup>2</sup>
Total GFA	33,886 m <sup>2</sup>
Carpark Provided	167

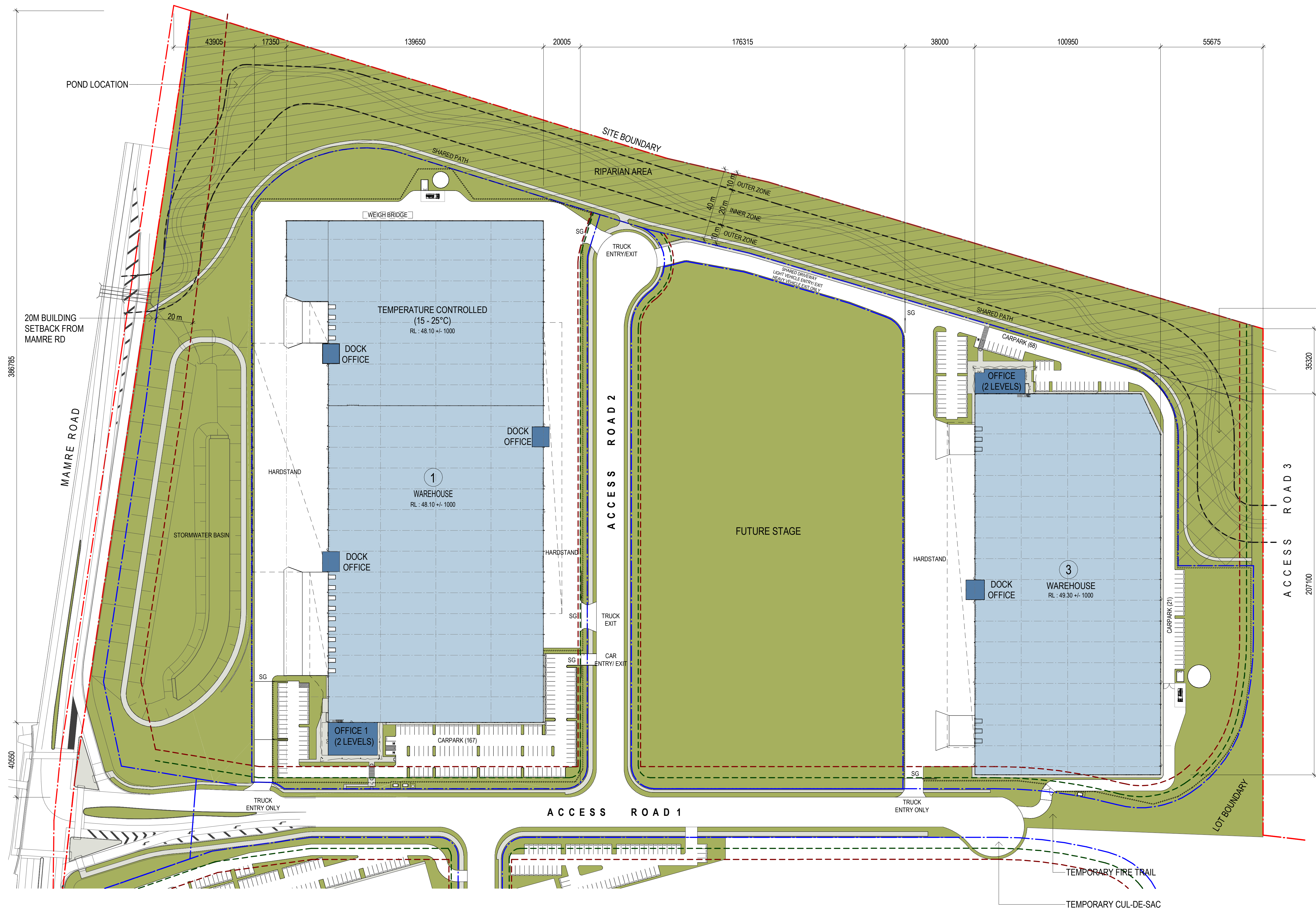
WAREHOUSE 3	
Site Area	42,755 m <sup>2</sup>
Offices	700 m <sup>2</sup>
Warehouse	20,735 m <sup>2</sup>
Dock Office	100 m <sup>2</sup>
Total GFA	21,535 m <sup>2</sup>
Carpark Provided	89



- LEGEND**
- Landscape Setback
  - Building Setback
  - SS Substation Indicative Location
  - RW Retaining Wall
  - FS Fire Services
  - FB Fire Brigade Truck Parking
  - RW Rainwater Tank
  - ☐ AC Plant Indicative Location

- LEGEND**
- Stage 1 Infrastructure Works
  - Stage 1 Bulk earthworks / temporary sediment erosion basins / landscaping / batter stabilisation
  - Stage 1 on Lot Works
  - Temporary right of carriageway
  - Stage 1 Retaining Walls





RIPARIAN AREA TO BE  
RETAINED - HOWEVER  
WOULD BE REMOVED  
(SUBJECT TO APPROVAL  
RO REALIGNMENT ON  
ADJOINING PROPERTY)

LOT 1 AREA SCHEDULE	
SITE AREA	61,039 M <sup>2</sup>
CAR PARKING SPACES	167
OFFICE 1 (2 LEVELS)	900 M <sup>2</sup>
DOCK OFFICE 1	100 M <sup>2</sup>
DOCK OFFICE 2	100 M <sup>2</sup>
DOCK OFFICE 3	100 M <sup>2</sup>
WAREHOUSE 1	20,016 M <sup>2</sup>
TEMPERATURE CONTROLLED	12,670 M <sup>2</sup>
TOTAL GFA	33,886 M <sup>2</sup>

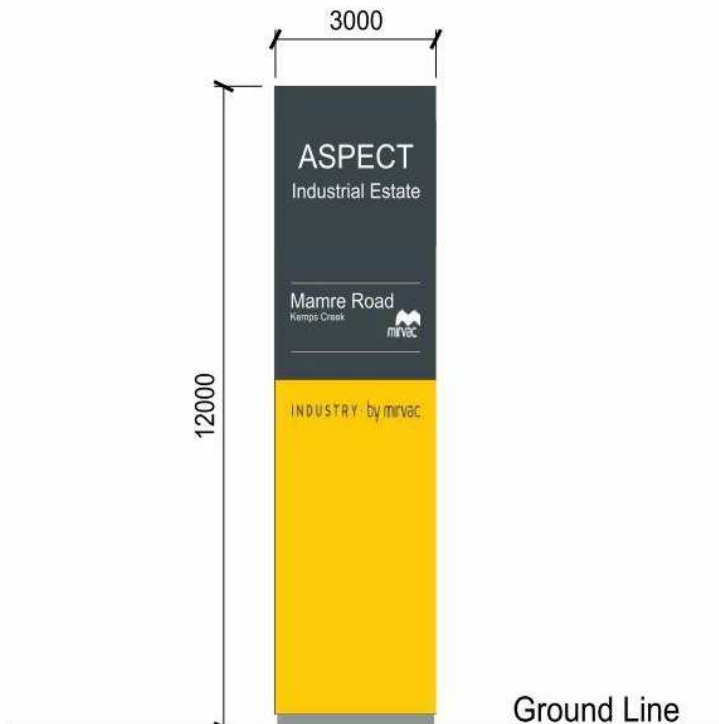
LOT 3 AREA SCHEDULE	
SITE AREA	42,755 M <sup>2</sup>
CAR PARKING SPACES	89
OFFICE (2 LEVELS)	700 M <sup>2</sup>
DOCK OFFICE	100 M <sup>2</sup>
WAREHOUSE	20,735 M <sup>2</sup>
TOTAL GFA	21,535 M <sup>2</sup>

- SITE LEGEND**
- FNC-1 CHAINMESH FENCE
  - FNC-2 PALISADE FENCE
  - FNC-3 POST & RAIL FENCE
  - RETAINING WALL
  - SG SLIDING GATE
  - PG GATE
  - PG PEDESTRIAN GATE
  - PG TELESCOPIC GATE
  - SITE BOUNDARY
  - LOT BOUNDARY
  - BUILDING SETBACK
  - LANDSCAPE SETBACK
  - ROAD LINES RESERVE

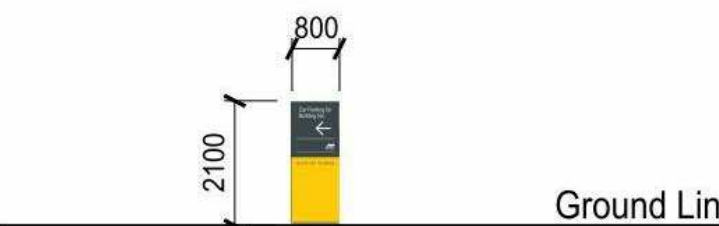


LEGEND

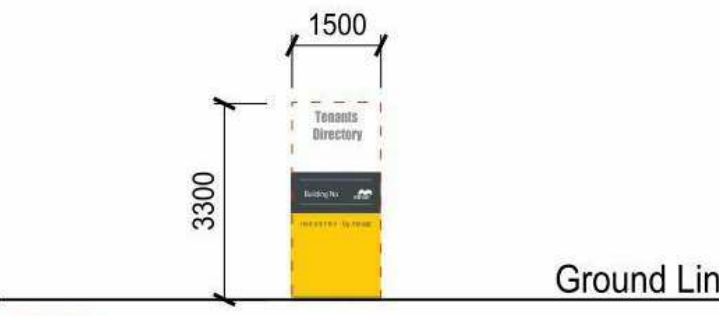
- S1** ESTATE PYLON SIGNAGE
- S2** TENANT PYLON SIGNAGE
- S3** TRUCK ENTRY / EXIT SIGNAGE
- S4** TENANT BUILDING IDENTIFICATION SIGNAGE (11m x 2.5m)



**S1** Estate Pylon Sign  
Artwork & colour to future detail.  
Illuminated



**S2** Wayfinding Signage Pylon for  
Car Parking  
Artwork & colour to future detail.  
Illuminated



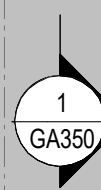
**S3** Wayfinding Signage Pylon for  
Tenants within each Building.  
Artwork & colour to future detail.  
Illuminated



**S4** 'Tenant Identification' Sign.  
Artwork & colour to future detail.  
Illuminated.

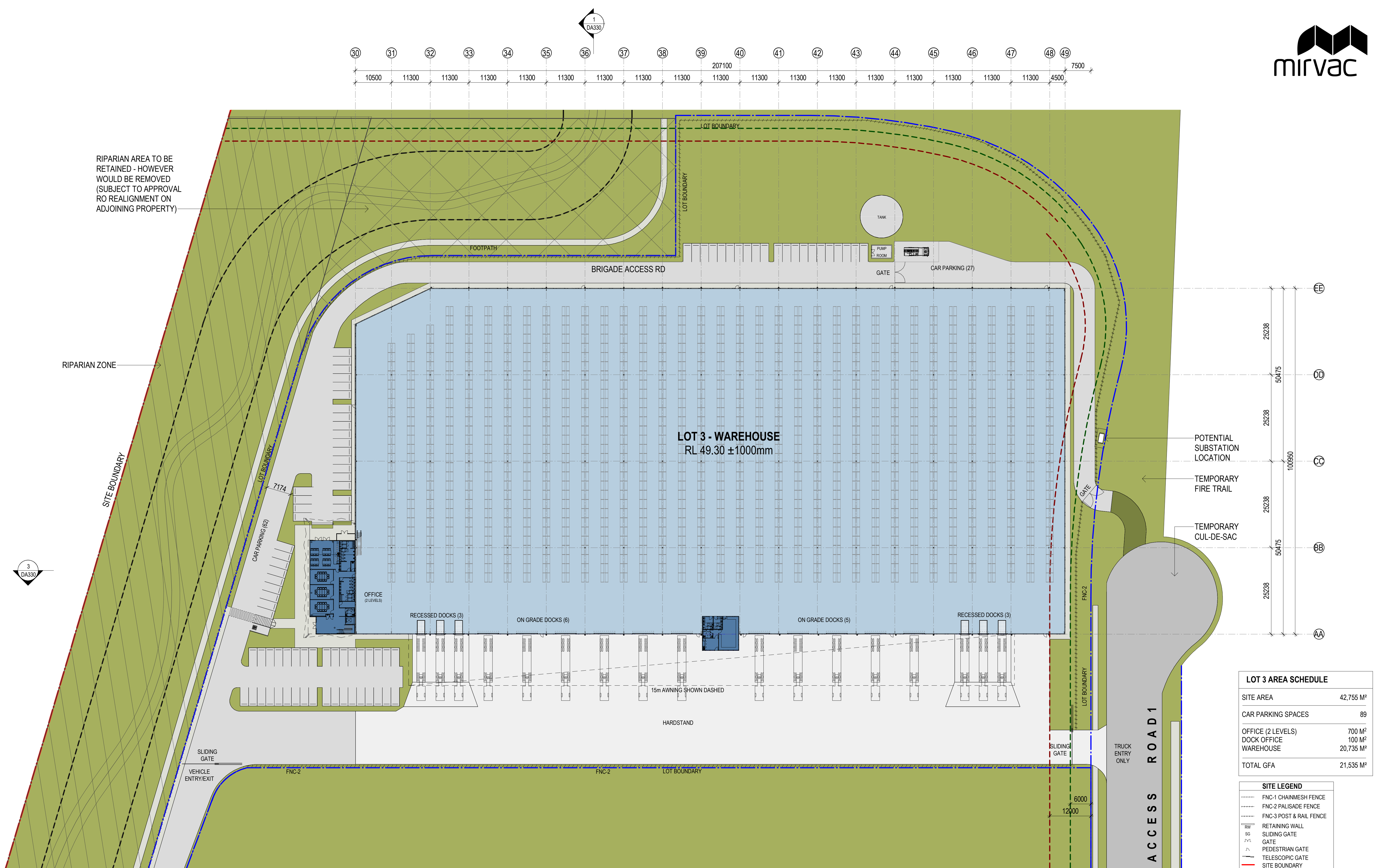






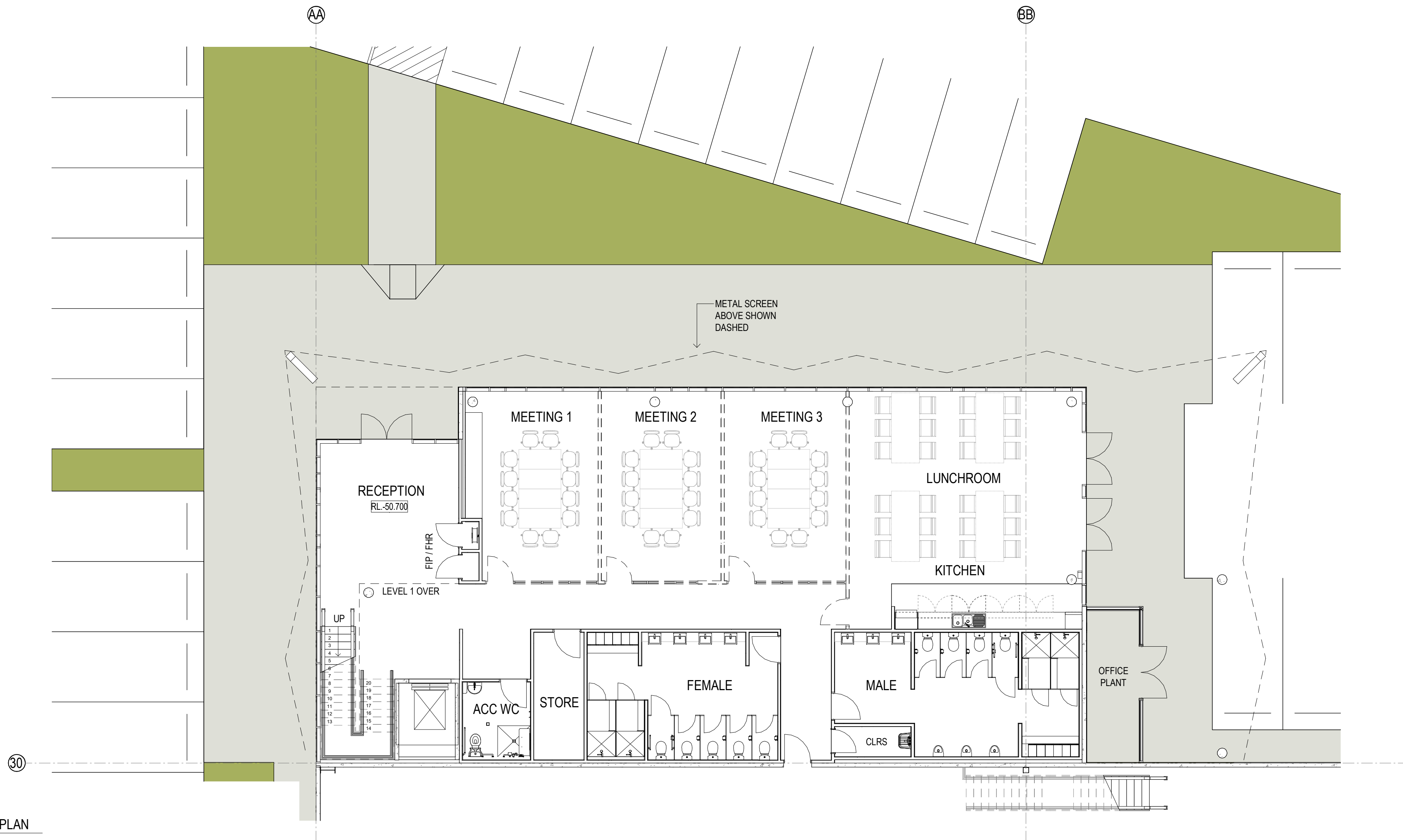
LOT 1 AREA SCHEDULE	
SITE AREA	61,039 M <sup>2</sup>
CAR PARKING SPACES	167
OFFICE 1 (2 LEVELS)	900 M <sup>2</sup>
DOCK OFFICE 1	100 M <sup>2</sup>
DOCK OFFICE 2	100 M <sup>2</sup>
DOCK OFFICE 3	100 M <sup>2</sup>
WAREHOUSE 1	20,016 M <sup>2</sup>
TEMPERATURE CONTROLLED	12,670 M <sup>2</sup>
TOTAL GFA	33,886 M <sup>2</sup>



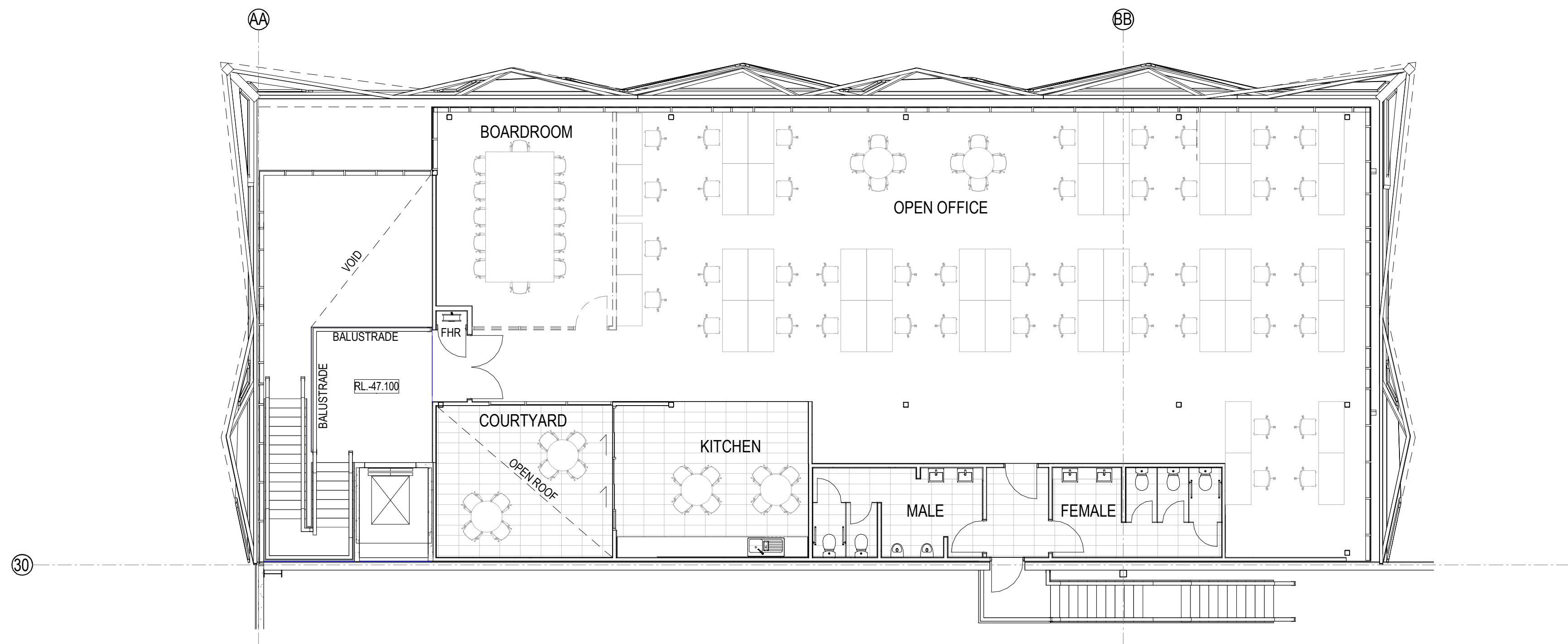


LOT 3 OFFICE 3A AREA SCHEDULE

GROUND FLOOR	352m <sup>2</sup>
LEVEL 1	421m <sup>2</sup>
LESS COURTYARD	25m <sup>2</sup>
LESS VOID	44m <sup>2</sup>
TOTAL AREA	704m <sup>2</sup>



1 GROUND FLOOR PLAN  
1 : 100



2 LEVEL 1 FLOOR PLAN  
1 : 100