



Our ref: 21163
30 August 2022

Department of Planning and Environment
Infrastructure Assessments
Att: Anthony Richardson
(Planning Officer)

Dear Anthony

RE: Rouse Hills Anglican College Redevelopment – SSD – 8006-Mod3

We refer to your correspondence dated 29 July 2022 and reference to a submission received from David Way (Senior Conservation Officer) at the DPIE (Environment and Heritage Group). The EHG submission states that;

EHG highlights that, it is prudent to investigate whether the site is affected by Second Ponds Creek mainstream flooding or overland flooding. From a floodplain management perspective, the principles in the *Floodplain Development Manual (2005)* apply to all overland flow associated with major drainage.

A Flood Study¹ was undertaken as part of a Water Cycle Management Strategy prepared on behalf of the Department of Planning for the Area 20 Precinct in October 2010 as part of the strategic planning and rezoning of the locality (including the existing school site). The mainstream flood and overland flow effects from Second Ponds Creek were considered as part of this study as well as modelling for climate change effects on flooding. Flood mapping was developed for the precinct and the report concluded that:

A comparison of flood model results for the Second Ponds Creek catchment with and without development in the Area 20 Precinct shows that urbanisation will, for the majority of cases, reduce flood levels. This is due to the decrease in peak flow rates as a result of urbanising the catchment, as discussed above.

The attached correspondence from TTW confirms that the subject site is outside the mainstream flood effects from Second Ponds Creek. (**Appendix A – Flood Advice**)

Yours faithfully

Ingham Planning Pty Ltd
Ph: 9416 9111

¹ Area 20 Precinct, Rouse Hill – Water Cycle Management Strategy Report incorporating Water Sensitive Urban Design Techniques (J. Wyndham Prince Consulting Engineers) – October 2010



APPENDIX A

Flood Advice from TTW (30 August 2022)

30 August 2022

171539

Terroir
Level 2 / 79 Myrtle Street
Chippendale 2008 NSW

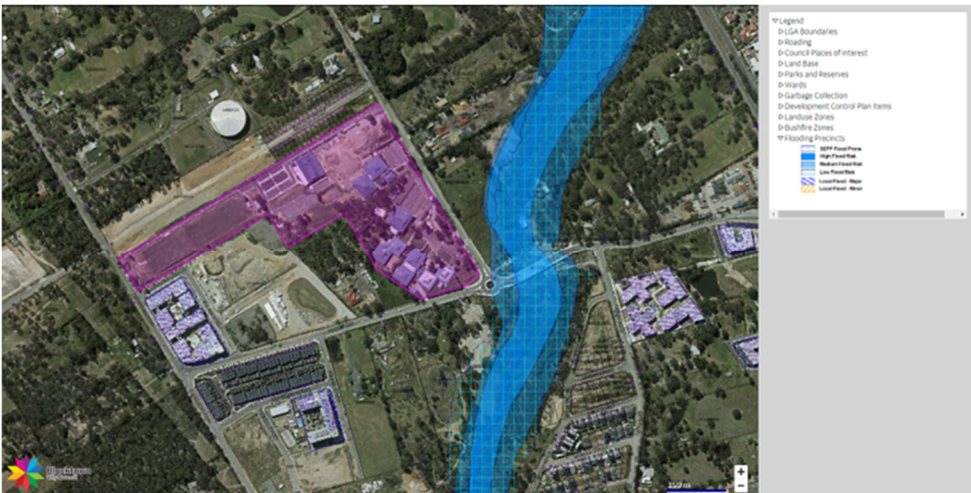
Attention: Cassandra Kiss

**Rouse Hill Anglican College Redevelopment
Flood Study Request**

Dear Cassandra,

As noted in Council's flood map below, the Rouse Hill Anglican College site is outside the mainstream flood effects from Second Ponds Creek. TTW's stormwater design scope for the Rouse Hill Anglican College Redevelopment was in accordance with Council's consent conditions, overland flow was assessed but a Flood Study for the project was not requested.

The mainstream flood plan from Blacktown Council is as follows;



Should you require anything further please contact the undersigned.

Yours faithfully,
TTW (NSW) PTY LTD

NEMESIO BIASON JR
Associate Director

P:\2017\1715\171539\Fees\CAAF\20220830 Rouse Hill Anglican College Redevelopment Flooding Rev1.docx