

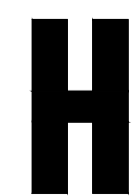
TELOPEA URBAN RENEWAL

STAGE 1A-2 RESIDENTIAL LANDSCAPE WORKS DEVELOPMENT APPLICATION



DRAWING INDEX

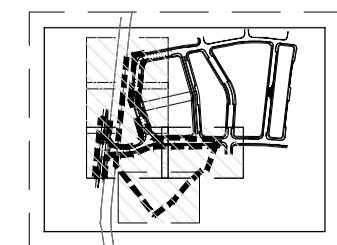
DRAWING No.	STAGE CODE	DRAWING TITLE
GENERAL		
HSL_S1A-2_L_0001	1A-2	COVER SHEET & DRAWING INDEX
HSL_S1A-2_L_0002	1A-2	DRAWING LEGEND
HSL_S1A-2_L_0003	1A-2	PLANTING SCHEUDLE
HSL_S1A-2_L_0004	1A-2	MATERIALS SCHEUDLE
SITE PLAN		
HSL_S1A-2_L_0101	1A-2	MASTER PLAN - STAGE 1A-2
GENERAL ARRANGEMENT PLANS		
HSL_S1A-2_L_1103	1A-2	GENERAL ARRANGEMENT TILE 3
HSL_S1A-2_L_1104	1A-2	GENERAL ARRANGEMENT TILE 4
HSL_S1A-2_L_1105	1A-2	GENERAL ARRANGEMENT TILE 5
DETAIL PLANS		
HSL_S1A-2_L_1801	1A-2	GREEN ROOF PLANS
SECTIONS		
HSL_S1A-2_L_3011	1A-2	SECTIONS - ROOFTOP
DESIGN REPORT		
STAGE 1A PUBLIC DOMAIN & LANDSCAPE DESIGN REPORT		



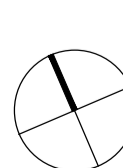
CONSULTANT

Hassell LTD ABN 24 007 711 435
Level 2, Pier 8/9/23 Hickson Rd
Sydney NSW 2000 Australia
T +61 2 9101 2000
F +61 2 9101 2100
sydney@hassellstudio.com
Nominated Architects NSW:
Tony Grist 5350
Glenn Scott 5842
Ross de la Motte 7398

REFERENCE



NORTH



NOTES

- Do not scale drawing. Written dimensions govern
 - All dimensions are in millimeters unless noted otherwise
 - All dimensions shall be verified on site before proceeding with the work. Hassell shall be notified in writing of any discrepancies.
 - This drawing must be read in conjunction with all relevant contracts, specifications and drawings
- This drawing is an uncontrolled copy. Unless noted otherwise
© Copyright of this drawing is vested in Hassell Ltd.

REV DESCRIPTION

REV	DESCRIPTION	DATE
D	FINAL	09 07 2021
C	FINAL	16 02 2021
B	FOR INFORMATION	11 08 2020
A	DRAFT FOR REVIEW	09 07 2020

CLIENT
FRASERS PROPERTY AUSTRALIA

PROJECT
TELOPEA URBAN RENEWAL
STAGE 1A DEVELOPMENT APPLICATION
TELOPEA, NSW, 2117

STATUS
DRAFT FOR INFORMATION

DRAWING TITLE
COVER SHEET

REVIEWED GD	SCALE @ A1 0.010490
APPROVED DT	PROJECT NO. 013595
DRAWING NO. HSL_S1A-2_L_0001	REV NO. D

DRAWING LEGEND

SITE

CODE	SYMBOL	DESCRIPTION
-		TELOPEA CONCEPT PLAN PROJECT BOUNDARY
-		STAGE 1A-1 SITE BOUNDARY
-		ROAD RESERVE BOUNDARY
-		INDICATIVE EXISTING LEVEL. REFER TO CIVIL ENGINEERS DRAWINGS
-		INDICATIVE FINISHED LEVEL. REFER TO ARCHITECTURAL DRAWINGS
-		INDICATIVE RELATIVE LEVEL. REFER TO CIVIL ENGINEERS DRAWINGS
-		TOP OF WALL BOTTOM OF WALL

WALLS

SYMBOL	DESCRIPTION
	WALL TYPE 01 - ADDERTON ROAD LINK STONE FACED RETAINING
	WALL TYPE 02 - OPEN SPACE IN-SITU CONCRETE RETAINING
	WALL TYPE 03 - PRIVATE OPEN SPACE BRICK

STAIRS & RAMPS

SYMBOL	DESCRIPTION
	STAIRS & BALUSTRADE TO DDA
	RAMP & BALUSTRADE TO DDA

FE - FENCES

CODE	SYMBOL	DESCRIPTION
FE01		FENCE TYPE 01 900mm (H)
FE02		FENCE TYPE 02 180mm (H)
FE03		FENCE TYPE 03 PRIVATE OPEN SPACE (SEE ARCHITECTURAL DOCUMENTATION)

PV - HARDWORKS

CODE	SYMBOL	DESCRIPTION
PV01		PAVING TYPE 01 - PUBLIC LINKS STONE PAVING
PV02		PAVING TYPE 02 - RESIDENTIAL LINKS STONE PAVING
PV03		PAVING TYPE 03 - GARDEN PATHS STONE PAVING
PV04		PAVING TYPE 04 - LOBBIES & ENTRANCES STONE PAVING
PV07		GRAVEL
PV08		PLAYGROUND SOFTFALL
PV09		FOOTPATH - INSITU CONCRETE
PV12		PAVING TYPE 12 - STEPPING STONES
PV13		PAVING TYPE 12 - ROAD PAVER - TRAFFICABLE

TR-TREES

CODE	SYMBOL	DESCRIPTION
TREX		EXISTING TREE TO BE RETAINED
TR01		PROPOSED TREE 1000LTR
TR02		PROPOSED TREE 750LTR
TR03		PROPOSED TREE 400LTR
TR04		PROPOSED SCREEN PLANTING

PL - SOFTWORKS

CODE	SYMBOL	DESCRIPTION
PL01B		PLANTING MIX 01B STREET TYPE B - SHORTLAND
PL03		PLANTING MIX 03 NEIGHBOURHOOD PARK
PL04		PLANTING MIX 04 MEWS
PL05		PLANTING MIX 05 THE BACKYARD
PL06		PLANTING MIX 06 THE GARDEN
PL07		PLANTING MIX 07 ROOF TERRACE
PL08		PLANTING MIX 08 TURF
PL09		PLANTING MIX 09 PRIVATE OPEN SPACES

FN - FURNITURE, FIXTURES AND LIGHTING

CODE	SYMBOL	DESCRIPTION
LI01		POLE TOP LIGHT
LI02		STREET LIGHT (INDICATIVE LOCATION ONLY)
FN03		SEAT WITH BACKREST & ARMREST (PROPRIETARY ITEM)
FN04		PICNIC BENCH & SEATS (PROPRIETARY ITEM)
FN06		BICYCLE HOOP (PROPRIETARY ITEM)
FN07		BIN GENERAL WASTE (PROPRIETARY ITEM)
FN10		SEAT WITH BACKREST & ARMREST (CUSTOMIZED PROPRIETARY ITEM)
FN13		DRINKING FOUNTAIN WHEELCHAIR ACCESSIBLE WITH DOG BOWL (PROPRIETARY ITEM)
FN15		SHADE STRUCTURE (CUSTOMIZED PROPRIETARY ITEM)

RF - ROOFTOP/ COMMUNAL OPEN SPACE FIXTURES

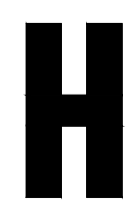
CODE	SYMBOL	DESCRIPTION
RF01		U-SHAPED LOUNGE SEAT
RF02		RECLINING SUNBED
RF03		ROOFTOP PERGOLA
WF01		RAISED WATER FEATURE

PE - PLAYGROUND EQUIPMENT

CODE	SYMBOL	DESCRIPTION
PE03		ROPE BALANCE BEAM (PROPRIETARY ITEM)
PE04		ARGO BALANCE (PROPRIETARY ITEM)
PE05		STEPPING PODS (PROPRIETARY ITEM)
PE06		OUTDOOR BARBECUE (PROPRIETARY ITEM)

DRAWING NOTES

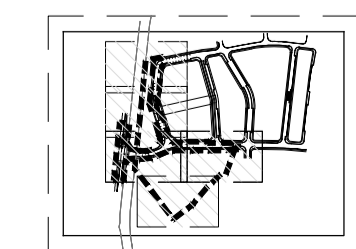
- DRAWINGS SHOW DESIGN INTENT AND ARE SUBJECT TO FUTURE DETAIL
- DRAWINGS ARE TO BE READ IN CONJUNCTION WITH ENGINEER AND ARCHITECTURAL DRAWINGS
- ALL LEVELS PROVIDED ARE INDICATIVE ONLY AND ARE SUBJECT TO FUTURE DESIGN



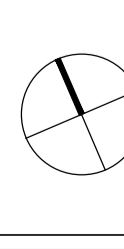
CONSULTANT

Hassell LTD ABN 24 007 711 435
Level2, Pier 8/8,23 Hickson Rd
Sydney NSW 2000 Australia
T +61 2 9101 2000
F +61 2 9101 2100
sydney@hassellstudio.com
Nominated Architects NSW:
Tony Grist 5350
Glenn Scott 5842
Ross de la Motte 7398

REFERENCE



NORTH



NOTES

- Do not scale drawing. Written dimensions govern
 - All dimensions are in millimeters unless noted otherwise
 - All dimensions shall be verified on site before proceeding with the work. Hassell shall be notified in writing of any discrepancies.
 - This drawing must be read in conjunction with all relevant contracts, specifications and drawings
- This drawing is an uncontrolled copy. Unless noted otherwise
© Copyright of this drawing is vested in Hassell Ltd.

REV DESCRIPTION

REV	DESCRIPTION	DATE
E	FINAL	07 03 2022
D	FINAL	09 07 2021
C	FINAL	16 02 2021
B	FOR INFORMATION	11 08 2020
A	DRAFT FOR REVIEW	09 07 2020

DATE

CLIENT

FRASERS PROPERTY AUSTRALIA

PROJECT
TELOPEA URBAN RENEWAL
STAGE 1A DEVELOPMENT APPLICATION
TELOPEA, NSW, 2117

STATUS

DRAFT FOR INFORMATION

DRAWING TITLE

DRAWING LEGEND

REVIEWED

GD

APPROVED

DT

DRAWING NO.

HSL_S1A-2_L_0002

SCALE @ A1

0.010490

PROJECT NO.

013595

REV NO.

E

PLANTING SCHEDULE

TREES

BOTANIC NAME	COMMON NAME	POT SIZE (ltr)
NEIGHBOURHOOD PARK		
Grevillea 'Moonlight'	Grevillea 'Moonlight'	400/750
Angophora costata	Sydney red gum	400/750
Eucalyptus saligna	Sydney Blue Gum	400/750
Eucalyptus punctata	Grey Gum	400/750
Syncarpia glomulifera	Turpentine	400/750
Acacia implexa	Hickory Wattle	400/750
Melia azedarach	White Cedar	400/750
Jacaranda mimosifolia	Jacaranda	400/750
COMMUNAL OPEN SPACE- CENTRAL LINK		
Angophora costata	Sydney red gum	400/ 750
Brachychiton populneus x acerifolius	Bella Pink	400/ 750
Corymbia citriodora 'Dwarf'	Lemon-scented gum	400/ 750
Cotinus coggygria 'Royal Purple'	Smoke Bush	400/ 750
Eucalyptus saligna	Sydney Blue Gum	400/ 750
Eucalyptus punctata	Grey Gum	400/ 750
Laurus nobilis	Bay Tree	400/ 750
Waterhousia floribunda 'Amaroo'	Lilly Pilly	400/ 750
COMMUNAL OPEN SPACE- SHARED BACKYARD		
Angophora costata	Sydney red gum	200
Corymbia ficifolia fairy floss	Red flowering gum	100
Corymbia citriodora 'Dwarf'	Lemon-scented gum	200
Pyrus calleryana 'Aristocrat'	Capital Ornamental Pear	100
Eucalyptus saligna	Sydney Blue Gum	200
Eucalyptus punctata	Grey Gum	200
Laurus nobilis	Bay Tree	100
Plumeria Acutifolia	Frangipani	200
Michelia fig	Port wine magnolia	40
Buxus sempervirens	Boxwood	40
COMMUNAL OPEN SPACE- STURT STREET GARDEN		
Cercis canadensis 'Forest Pansy'	Eastern redbud	400
Corymbia citriodora 'Dwarf'	Lemon-scented gum	100
Malus 'Sutyzam'	Orchard Apple	100
Pyrus betulaefolia 'Southworth Dancer'	Ornamental Pear	200

GROUNDCOVERS

BOTANIC NAME	COMMON NAME	POT SIZE (mm)
PLANTING MIX 01 A & B - STREETS		
Dianella caerulea 'Cassa Blue'	Blue flax-lily	200
Dianella revoluta 'Little Rev'	Blueberry lily	200
Grevillea x Gaudichaudii	Prostrate Grevillea	200
Liriope muscari 'Amethyst'	Big blue lilyturf	200
Liriope muscari 'Isabella'	Big blue lilyturf	200
Liriope spicata	Creeping Liriope	200
Lomandra longifolia 'Verday'	Basket Grass	200
Lomandra confertifolia 'Wingarra'	Mat-rush	200
Lomandra longifolia 'Tanika'	Basket Grass	200
Lomandra longifolia 'Katrinus'	Basket Grass	200
Myoporum parvifolium 'Yareena'	Creeping boobialla	140
Ophiopogon japonicus	Mondo Grass	140
Poa labillardieri	Common tussock-grass	200
Pratia pedunculata	Trailing Pratia	140
Trachelospermum jasminoides	Star Jasmine	200

GROUNDCOVERS

BOTANIC NAME	COMMON NAME	POT SIZE (mm)
PLANTING MIX 03 - NEIGHBOURHOOD PARK		
Libertia paniculata	Flag grass	200
Senecio serpens	Blue chalk sticks	200
Gaura lindheimeri	Butterfly bush	200
Poa Labillardierei	Tussock grass	200
Darwinia citriodora	Lemon scented myrtle	200
Lomandra 'Tanika'	Mat Rush	200
Persicaria affinis	Himalayan Bistort	200
Leucospermum 'Scarlet Ribbon'	Pincushion	200
Telopea speciosissima	Waratah	200
Sarcococca confusa	Sweet Box	200
Festuca Glauca	Blue Mountain grass	140
Austromyrtus	Copper Tops	140
Philodendron Xandadu	Philodendron	200
Pennisetum nafray	Fountain grass	140
Adenanthos sericeus 'Silver Lining'	Woolly bush	200
Acmena smithii minor	Lily pilly	200
Trachelospermum asiaticum	Asiatic jasmine	200
Darwinia citriodora	Lemon-scented Myrtle	200
PLANTING MIX 04 - MEWS		
Brachyscome multifida	Cut-leaf daisy	200
Scaevola 'Mauve Clusters'	Fairy fan-flower	200
Kniphofia sarmentosa	Red hot pocker	200
Poa labillardierei	Tussock grass	200
Panicum virgatum 'Heavy Metal'	Switchgrass	200
Michelia figo	Port wine magnolia	200
Allegheny stonecrop	Sedum	200
Gaura lindheimeri	Butterfly bush	200
Acacia 'Limelight'	River Wattle	200
Plectranthus	Mona Lavender	200
Leucospermum 'Scarlet Ribbon'	Pincushion	200
Sarcococca confusa	Sweet Box	200
Persicaria affinis	Himalayan Bistort	200
Sedum 'Autumn Joy'	Sedum	200
Philodendron 'Xanadu'	Philodendron	200
PLANTING MIX 05 - THE BACKYARD		
Rhapis excels	Lady palm	200
Philodendron 'Xanadu'	Philodendron	200
Strelitzia nicolai	Bird of paradise	200
Liriope muscari 'Evergreen giant'	Mondo grass	150
Dichondra argentea	Silver falls	150
Crassula ovata 'Baby jade'	Crassula	150
Ophiopogon japonicus	Mondo grass	150
Adiantum aethiopicum	Maindenhair fern	150
Libertia paniculata	Fig Grass	150
Calathea Zebrina	Zebra Plant	150
Ligularia designer'	Tracktor seat	150
Lomandra longifolia	Mat rush	150
Blechnum cartilagineum	Gristle fern	150
Aspidistra elatior	Cast iron plant	150
Calochlaena dubia	Bracken Fern	150
Dianella caerulea	Blue Flax lily	150
Lomandra Tanika	Mat Rush	150
Plectranthus	Mona Lavender	150

GROUNDCOVERS (cont.)

BOTANIC NAME	COMMON NAME	POT SIZE (mm)
PLANTING MIX 06 - THE GARDEN		
Raphiolepis indica 'Snow maiden'	Hawthorn	200
Iris sibirica	Siberian iris	200
Carissa macrocarpa	Natal plum	200
Convolvulus mauritanicus	Blue rock bindweed	200
Zephyranthes candida	White windflower	200
Tulbaghia violacea	Society Garlic	200
Libertia paniculata	Flag Grass	200
Pachystegia insignis	Rock daisy	200
Sedum 'Autumn Joy'	Sedum	200
Buxus sempervirens 'Boxwood'	English Box	200
Ophiopogon japonicus	Mondo grass	140
Veronicastrum virginicum 'Diane'		140
Stachys byzantina	Lamb's ears	200
Liriope muscari	Mondo grass	140
Arthropodium cirratum	New Zealand rock lily	200
PLANTING MIX 07 - ROOF TERRACES		
Austromyrtus	Copper tops	200
Clematis napautensis	Old man's beard	200
Carpobrotus glauca	Pig face	200
Senecio vitalis	Bush Blue pickle	200
Sedum 'Autumn Joy'	Sedum	200
Festuca Glauca 'Blue Mountain grass'	Fescue	200
Callistemon 'Pink alma'	Bottlebrush	200
Miscanthus sinensis	Japanese silver grass	200
Raphiolepis indica	Snow maiden	200
Clematis aristata	Traveller's Joy	200
Myoporum parvifolium	Creeping boobialla	200
Gazania Silver Leaf	Coastal gazania	200
Lomandra fluviatilis 'Shara'	Mat Rush	200
Trachelospermum asiaticum	Asiatic jasmine	200
Casuarina glauca Cousin It	Swamp Oak	200
Echinacea purpurea 'Razzmatazz'	Echinacea	200
PLANTING MIX 09 - PRIVATE OPEN SPACE		
Dichondra argentea	Silver falls	150
Philodendron Xanadu	Philodendron	200
Poa Labillardierei	Tussock grass	200
Senecio serpens	Blue chalk	150
Lomandra Tanika	Mat rush	200
Carpobrotus glaucescen	Pig face	150
Buxus sempervirens 'Boxwood'	English Box	200
Clivia miniata	Natal lily	200
Liriope muscari	Mondo grass	200

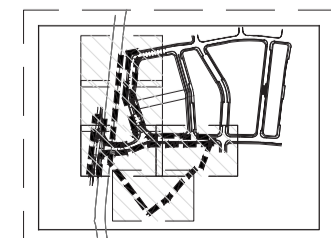
PLANT PALETTE IS INDICATIVE ONLY AND SUBJECT TO PAGE



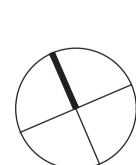
CONSULTANT

Hassell LTD ABN 24 007 711 435
Level2, Pier 8/9 23 Hickson Rd
Sydney NSW 2000 Australia
T +61 2 9101 2000
F +61 2 9101 2100
sydney@hassellstudio.com
Nominated Architects NSW:
Tony Grist 5350
Glenn Scott 6842
Ross de la Motte 7398

REFERENCE



NORTH



NOTES

- Do not scale drawing. Written dimensions govern
 - All dimensions are in millimeters unless noted otherwise
 - All dimensions shall be verified on site before proceeding with the work. Hassell shall be notified in writing of any discrepancies.
 - This drawing must be read in conjunction with all relevant contracts, specifications and drawings
- This drawing is an uncontrolled copy. Unless noted otherwise
© Copyright of this drawing is vested in Hassell Ltd.

REV DESCRIPTION

REV	DESCRIPTION	DATE
E	FINAL	07 03 2022
D	FINAL	09 07 2021
C	FINAL	16 02 2021
B	FOR INFORMATION	11 08 2020
A	DRAFT FOR REVIEW	09 07 2020

DATE

07 03 2022
09 07 2021
16 02 2021
11 08 2020
09 07 2020

CLIENT

FRASERS PROPERTY AUSTRALIA

PROJECT

TELOPEA URBAN RENEWAL
STAGE 1A DEVELOPMENT APPLICATION
TELOPEA, NSW, 2117

STATUS

DRAFT FOR INFORMATION

DRAWING TITLE

PLANTING SCHEDULE

REVIEWED

GD

APPROVED

DT

DRAWING NO.

HSL_S1A-2_L_0003

SCALE @ A1

0.010490

PROJECT NO.

013595

REV NO.

E

MATERIALS SCHEDULE

WA - WALLS

WA01



DESCRIPTION	RETAINING WALL
MATERIAL	FACED STONE
LOCATION	ADDEXTON ROAD LINK

WA02



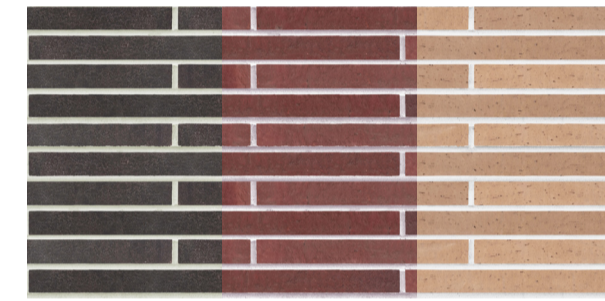
DESCRIPTION	RETAINING WALL
MATERIAL	IN-SITU CONCRETE
LOCATION	COMMUNAL & NEIGHBOURHOOD SPACES

WA03A



DESCRIPTION	BUILT FORM CORNER WALLS
MATERIAL	GLAZED BRICK - CREAM
LOCATION	RESIDENTIAL BUILT FORM

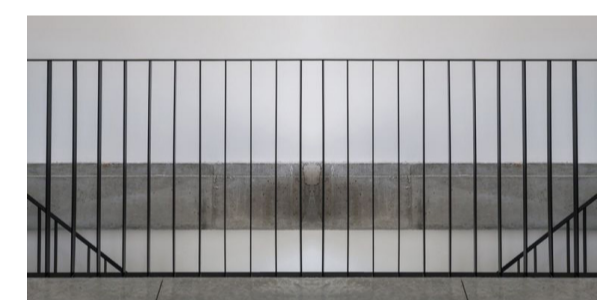
WA03B



DESCRIPTION	RESIDENTIAL GARDEN WALLS
MATERIAL	BRICK
LOCATION	PRIVATE OPEN SPACE - STURT STREET
NOTES	BROWN - NEIGHBOURHOOD PARK TAN - CENTRAL OPEN SPACE CREAM - BACKYARD

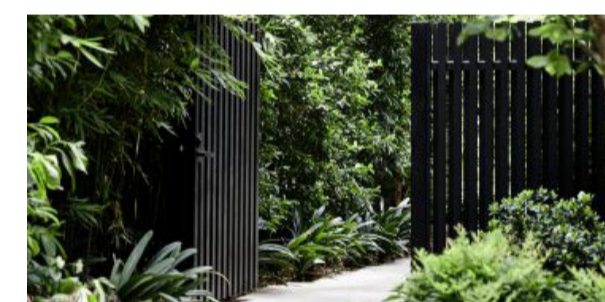
FN - FENCES

FN01



DESCRIPTION	FENCE TYPE 1 - 900mm (H)
MATERIAL	VERTICAL PALISADE FENCE
LOCATION	SITE BOUNDARY FENCE

FN02



DESCRIPTION	FENCE TYPE 2 - 1800mm (H)
MATERIAL	VERTICAL PALISADE FENCE
LOCATION	PUBLIC DOMAIN FENCES

PV - PAVEMENTS

PV01



DESCRIPTION	STONE PAVING (2m) SEALED
MATERIAL	GRANITE
LOCATION	PUBLIC CIRCULATION LINKS

PV02



DESCRIPTION	STONE PAVING (1.5m) SEALED
MATERIAL	GRANITE
LOCATION	RESIDENTIAL CIRCULATION LINKS

PV - PAVEMENTS CONTINUED

PV03



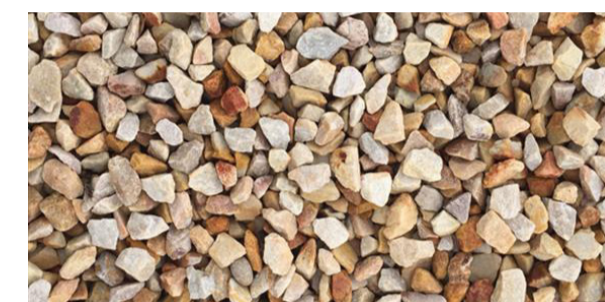
DESCRIPTION	STONE PAVING (1.5m) SEALED
MATERIAL	INFORMAL PAVING
LOCATION	COMMUNAL OPEN SPACE

PV04 / PV13



DESCRIPTION	PORPHYRY SET SEALED
MATERIAL	GRANITE
LOCATION	LOBBY/ MEWS

PV07



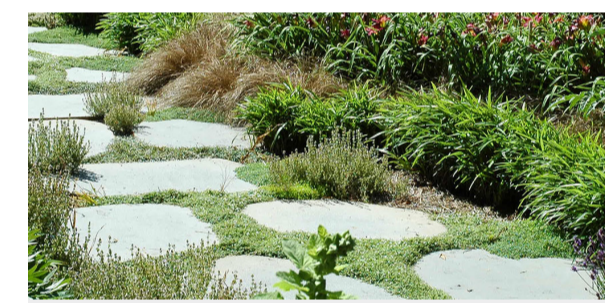
DESCRIPTION	GRAVEL
MATERIAL	'WILD HONEY'
LOCATION	GARDEN PATH (PRIVATE)

PV09



DESCRIPTION	CONCRETE FOOTPATH
MATERIAL	EXPOSED AGGREGATE FOOTPATH
LOCATION	FOOTPATH

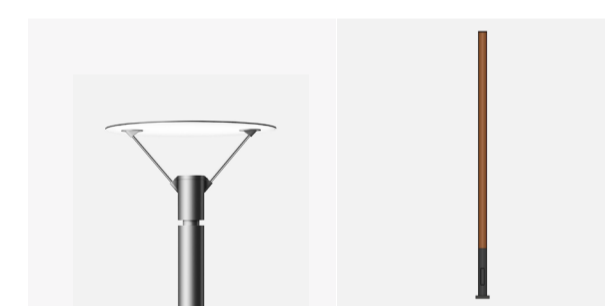
PV12



DESCRIPTION	STEPPERS IN PLANTING
MATERIAL	SANDSTONE
LOCATION	NEIGHBOURHOOD PARK

FN - FURNITURE, FIXTURES & LIGHTING

FN01



DESCRIPTION	IN-DIRECT POLE-TOP LUMINAIRE
MATERIAL	TIMBER POST/ BRASS TOP
LOCATION	PUBLIC DOMAIN

FN03



DESCRIPTION	SEAT WITH BACKREST & ARMREST
MATERIAL	TIMBER & HYDRO CIRCAL RECYCLED ALUMINIUM
LOCATION	NEIGHBOURHOOD PARK

PROPRIETARY ITEM
INDICATIVE PRODUCT: STREET FURNITURE AUSTRALIA
LINEAR SEAT

FN04

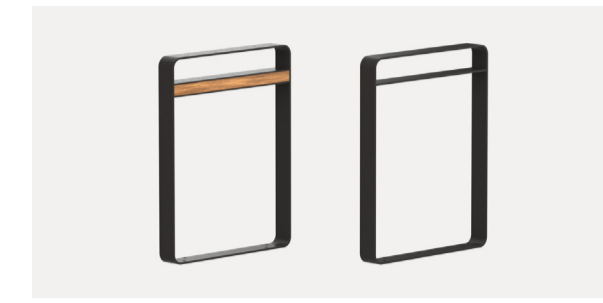


DESCRIPTION	PICNIC TABLE SETTING
MATERIAL	TIMBER & HYDRO CIRCAL RECYCLED ALUMINIUM
LOCATION	NEIGHBOURHOOD PARK

PROPRIETARY ITEM
INDICATIVE PRODUCT: STREET FURNITURE AUSTRALIA
LINEAR PICNIC SETTING

FN - FURNITURE, FIXTURES & LIGHTING CONTINUED

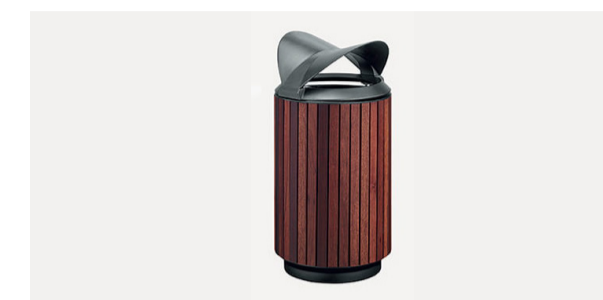
FN06



DESCRIPTION	BICYCLE HOOP
MATERIAL	HYDRO CIRCAL RECYCLED ALUMINIUM
LOCATION	PUBLIC DOMAIN

PROPRIETARY ITEM
INDICATIVE PRODUCT: STREET FURNITURE AUSTRALIA
LINEAR BICYCLE STAND

FN07



DESCRIPTION	BIN
MATERIAL	STAINLESS STEEL
LOCATION	NEIGHBOURHOOD PARK/ COMMUNAL OPEN SPACE

PROPRIETARY ITEM
INDICATIVE PRODUCT: STREET FURNITURE AUSTRALIA
MONSOON BIN

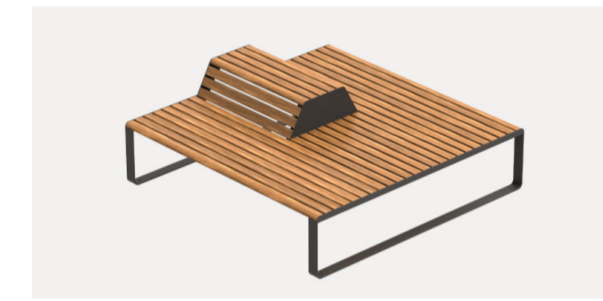
FN13



DESCRIPTION	DRINKING FOUNTAIN
MATERIAL	
LOCATION	NEIGHBOURHOOD PARK

DRINKING FOUNTAIN INCLUDES BOTTLE REFILL, DOG
WATER BOWL AND INFORMATION PLAQUES

FN10



DESCRIPTION	CURVED SEAT WITH BACKREST & ARMREST
MATERIAL	TIMBER & HYDRO CIRCAL RECYCLED ALUMINIUM
LOCATION	NEIGHBOURHOOD PARK

CUSTOMISED PROPRIETARY ITEM
INDICATIVE PRODUCT: STREET FURNITURE AUSTRALIA
LINEAR PLATFORM

FN15



DESCRIPTION	PICNIC SHELTER CUSTOMISED
MATERIAL	HARDWOOD BATTENS, GALVANISE POWDER COAT FRAME
LOCATION	NEIGHBOURHOOD PARK

PE - PLAYGROUND EQUIPMENT

PE03



DESCRIPTION	ROPE BALANCE
MATERIAL	HOT-DIP GALVANISED STEEL, EPDM RUBBER, PP ROPE
LOCATION	PUBLIC DOMAIN

NOTES
SUITABLE FOR 3+ YEARS
GUARANTEED 10 YEAR WARRANTY

PE04



DESCRIPTION	ARGO BALANCE
MATERIAL	PUR RUBBER, HOT-DIP GALVANISED STEEL
LOCATION	NEIGHBOURHOOD PARK

NOTES
SUITABLE FOR 6+ YEARS

PE05



DESCRIPTION	STEPPING PODS
MATERIAL	SBR RUBBER, HOT-DIP GALVANISED STEEL
LOCATION	NEIGHBOURHOOD PARK

NOTES
SUITABLE FOR 4+ YEARS

PE06



DESCRIPTION	OUTDOOR BARBECUE
MATERIAL	STAINLESS STEEL
LOCATION	COMMUNAL OPEN SPACE

NOTES
DESIGNED FOR EXTERNAL USE

RF - ROOFTOP & COMMUNAL OPEN SPACE FIXTURES

RF01



DESCRIPTION	BENCH & TABLE
MATERIAL	CONCRETE & STAINLESS STEEL
LOCATION	COMMUNAL OPEN SPACE - ROOFTOP

RF02



DESCRIPTION	BENCH - DAYBED
MATERIAL	TIMBER
LOCATION	COMMUNAL OPEN SPACE - ROOFTOP

RF03



DESCRIPTION	PERGOLA
MATERIAL	TIMBER & STEEL FRAME
LOCATION	COMMUNAL OPEN SPACE - ROOFTOP

WF01



DESCRIPTION	WATER FEATURE
MATERIAL	
LOCATION	COMMUNAL OPEN SPACE

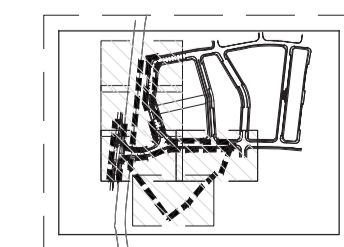
MATERIALS PALETTE IS INDICATIVE ONLY AND SUBJECT TO CHANGE



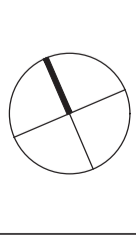
CONSULTANT

Hassell LTD ABN 24 007 711 435
Level2, Pier 8/9,23 Hickson Rd
Sydney NSW 2000 Australia
T +61 2 9101 2000
F +61 2 9101 2100
sydney@hassellstudio.com
Nominated Architects NSW:
Tony Griest 5350
Glenn Scott 6842
Ross de la Motte 7398

REFERENCE



NORTH



NOTES

- Do not scale drawing. Written dimensions govern
- All dimensions are in millimeters unless noted otherwise
- All dimensions shall be verified on site before proceeding with the work. Hassell shall be notified in writing of any discrepancies.
- This drawing must be read in conjunction with all relevant contracts, specifications and drawings
This drawing is an uncontrolled copy. Unless noted otherwise
© Copyright of this drawing is vested in Hassell Ltd.

REV DESCRIPTION

F	FINAL
E	FINAL
D	FOR INFORMATION
C	DRAFT FOR REVIEW
B	DRAFT FOR REVIEW
A	DRAFT FOR REVIEW

DATE

07 02 2021
16 02 2021
11 08 2020
30 07 2020
24 07 2020
09 07 2020

CLIENT

FRASERS PROPERTY AUSTRALIA

PROJECT

TELOPEA URBAN RENEWAL
STAGE 1A DEVELOPMENT APPLICATION
TELOPEA, NSW, 2117

STATUS

DRAFT FOR INFORMATION

DRAWING TITLE

MATERIALS SCHEDULE

REVIEWED

GD

APPROVED

DT

DRAWING NO.
HSL_S1A-2_L_0004

SCALE @ A1

0.010430

PROJECT NO.

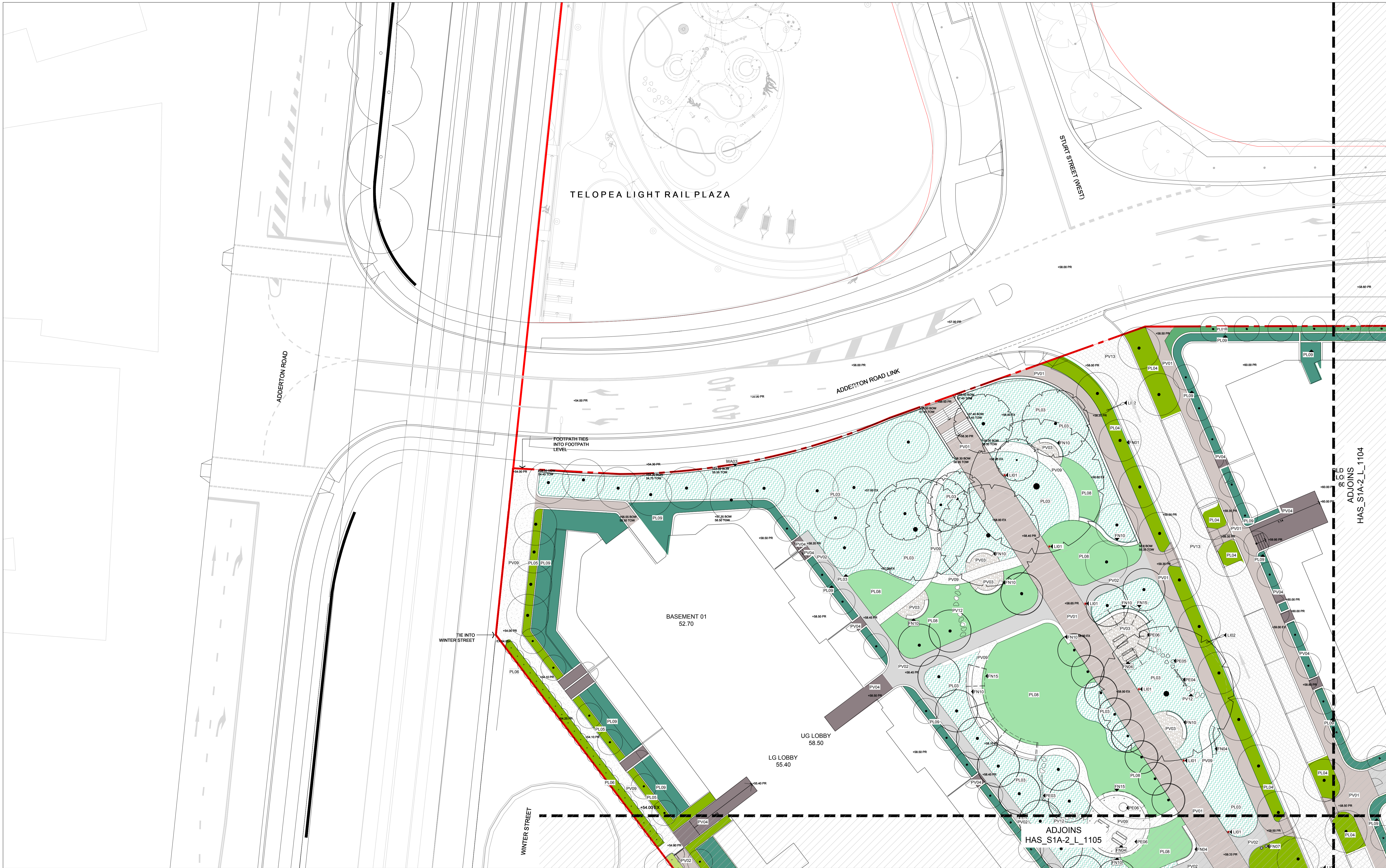
013595

REV NO.

F



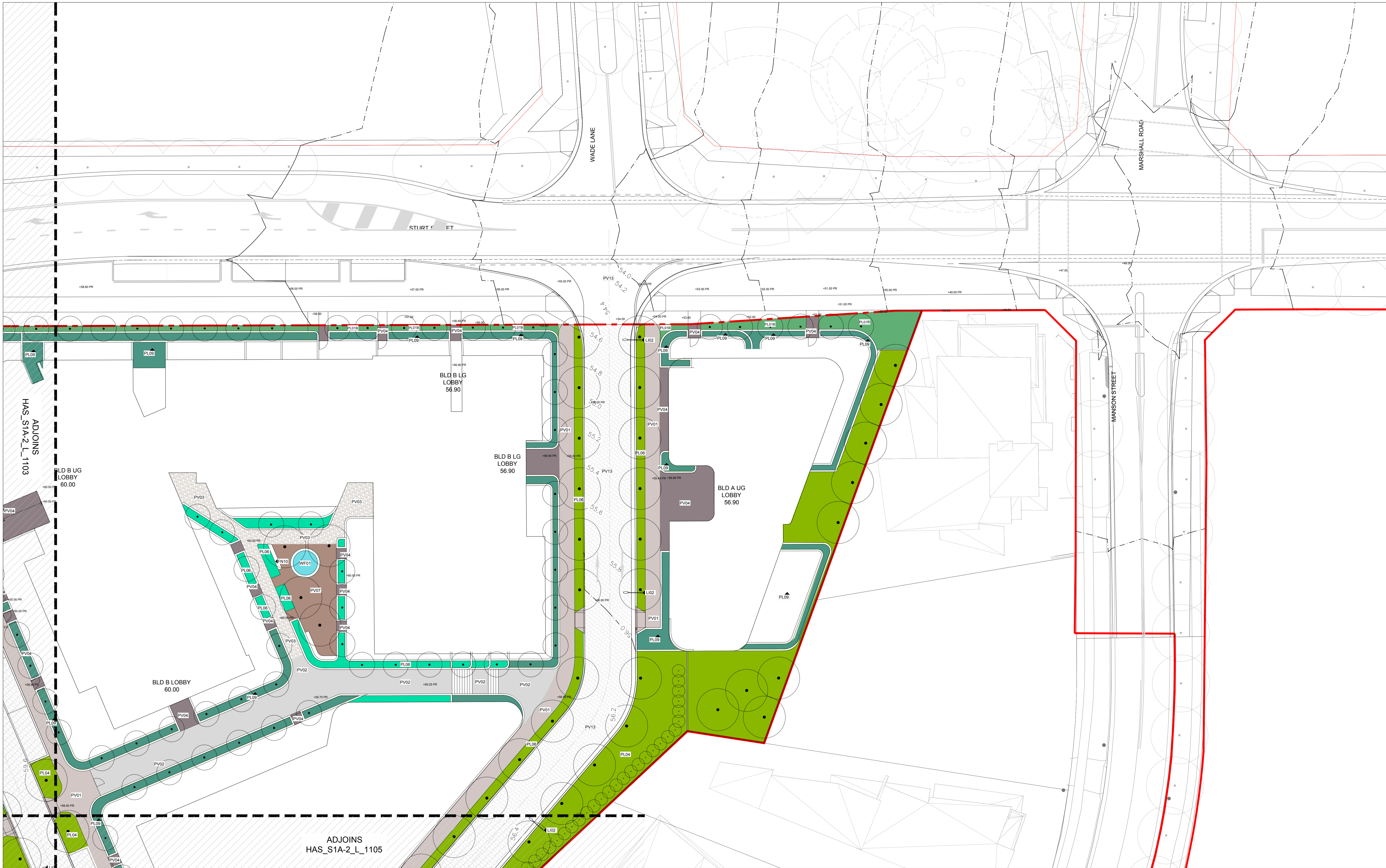
	CONSULTANT Hassell LTD ABN 24 007 711 435 Level2, Pier 8/9,23 Hickson Rd Sydney NSW 2000 Australia T +61 2 9101 2000 F +61 2 9101 2100 sydney@hassellstudio.com Nominated Architects NSW: Tony Grant 5350 Glenn Scott 6842 Ross de la Motte 7398	REFERENCE 	NORTH 	NOTES 1. Do not scale drawing. Written dimensions govern 2. All dimensions are in millimeters unless noted otherwise 3. All dimensions shall be verified on site before proceeding with the work. Hassell shall be notified in writing of any discrepancies 4. This drawing must be read in conjunction with all relevant contracts, specifications and drawings This drawing is an uncontrolled copy. Unless noted otherwise © Copyright of this drawing is vested in Hassell Ltd.	REV DESCRIPTION G FINAL	DATE 14 11 2022	CLIENT FRASERS PROPERTY AUSTRALIA PROJECT TEOPEA URBAN RENEWAL STAGE 1A DEVELOPMENT APPLICATION TEOPEA, NSW, 2117	STATUS DRAFT FOR INFORMATION DRAWING TITLE MASTER PLAN STAGE 1A-2	REVIEWED GD APPROVED DT DRAWING NO. HSL_S1A-2_L_0101	SCALE @ A1 NTS PROJECT NO. 013595 REV NO. G
	PRINT INFORMATION_ PRINTED BY: Georgia Darling_ON 2022/11/14_USING PAGESETUP_ _ _ _ _ USING PLOTSTYLE TABLE: halfweight.ctb_PC3 DWG To PDF.pc3_PSLTSCALE: 1_LTRSCALE: 1.000000									
	FILENAME I:\proj\11SYD013595-61A-P\Working\AutoCAD\03_DA-S1A\Sheet\HSL_S1A-2_L_0101 MASTER PLAN STAGE 1A-2.dwg									



ADJOINS
HAS_STA-2_L_1104

ADJOINS
HAS_STA-2_L_1105

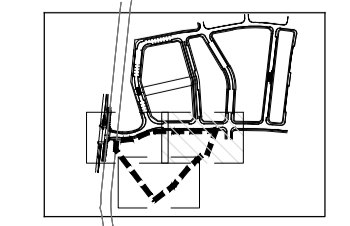
	CONSULTANT Hassell LTD ABN/ 24 037 711 435 Level2, Pier 8/8.23 Hickson Rd Sydney NSW 2000 Australia T +61 2 9101 2000 F +61 2 9101 2100 sydney@hassellstudio.com Nominated Architects NSW: Tony Grist 5350 Glenn Scott 5842 Ross de la Motte 7398	REFERENCE 	NORTH 	NOTES 1. Do not scale drawing. Written dimensions govern 2. All dimensions are in millimeters unless noted otherwise 3. All dimensions shall be verified on site before proceeding with the work. Hassell shall be notified in writing of any discrepancies. 4. This drawing must be read in conjunction with all relevant contracts, specifications and drawings This drawing is an uncontrolled copy. Unless noted otherwise © Copyright of this drawing is vested in Hassell Ltd.	REV DESCRIPTION G FINAL	DATE 14 11 2022	CLIENT FRASERS PROPERTY AUSTRALIA PROJECT TELOPEA URBAN RENEWAL STAGE 1A DEVELOPMENT APPLICATION TELOPEA, NSW, 2117	STATUS DRAFT FOR INFORMATION DRAWING TITLE GENERAL ARRANGEMENT TILE 3	REVIEWED GD APPROVED DT DRAWING NO. HSL_STA-2_L_1103	SCALE @ A1 1:200 PROJECT NO. 013595 REV NO. G
	PRINT INFORMATION: PRINTED BY: Georgia Darling ON: 2022/11/14 USING PAGESETUP: ... USING PLOTSTYLE TABLE: halweight.ctb PC3: DWG To PDF.pc3 L1: L1SCALE: 1:100000									
	FILENAME: I:\proj\1\SYD\013595-61A-P\Working\AutoCAD\03_DA-S1A\Sheets\HSL_STA-2_L_1103 GENERAL ARRANGEMENT TILE 3.dwg									



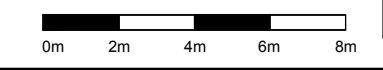
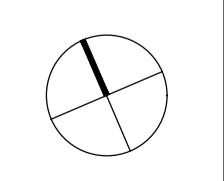
CONSULTANT

Hassell LTD ABN 24 037 711 435
 Level 2, Pier 8/9, 23 Hickson Rd
 Sydney NSW 2000 Australia
 T +61 2 9101 2000
 F +61 2 9101 2100
 sydney@hassellstudio.com
 Nominated Architects NSW
 Tony Grist 5350
 Glenn Scott 5842
 Ross de la Motte 7398

REFERENCE



NORTH



NOTES

1. Do not scale drawing. Written dimensions govern
 2. All dimensions are in millimeters unless noted otherwise
 3. All dimensions shall be verified on site before proceeding with the work. Hassell shall be notified in writing of any discrepancies.
 4. This drawing must be read in conjunction with all relevant contracts, specifications and drawings
- This drawing is an uncontrolled copy. Unless noted otherwise
 © Copyright of this drawing is vested in Hassell Ltd.

REV DESCRIPTION

REV	DESCRIPTION
G	FINAL

DATE

14 11 2022

CLIENT

FRASERS PROPERTY AUSTRALIA

PROJECT
 TELOPEA URBAN RENEWAL
 STAGE 1A DEVELOPMENT APPLICATION
 TELOPEA, NSW, 2117

STATUS

DRAFT FOR INFORMATION

DRAWING TITLE
 GENERAL ARRANGEMENT TILE 4

REVIEWED

GD

APPROVED
 DT

DRAWING NO.
 HSL_S1A-2_L_1104

SCALE @ A1

1:200

PROJECT NO.
 013595

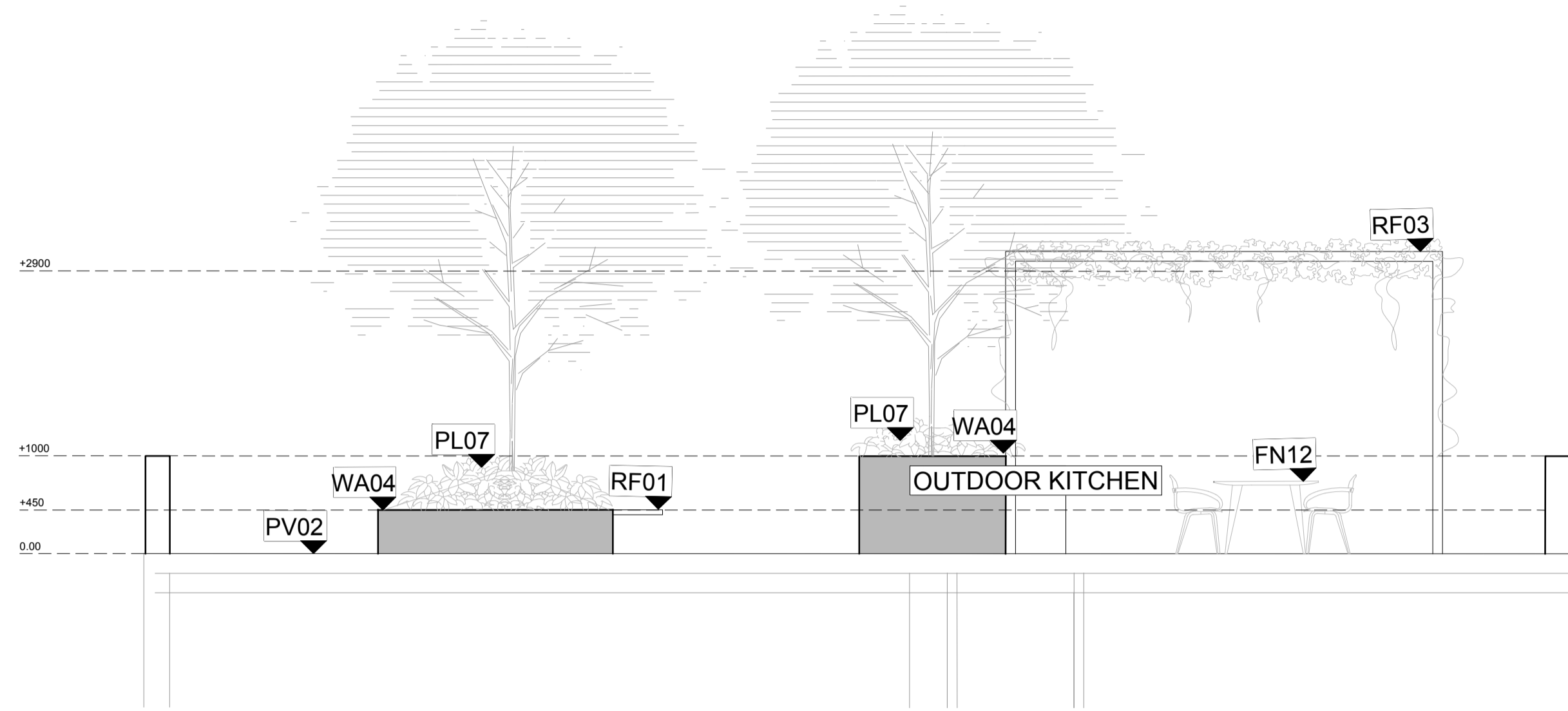
REV NO.
 G



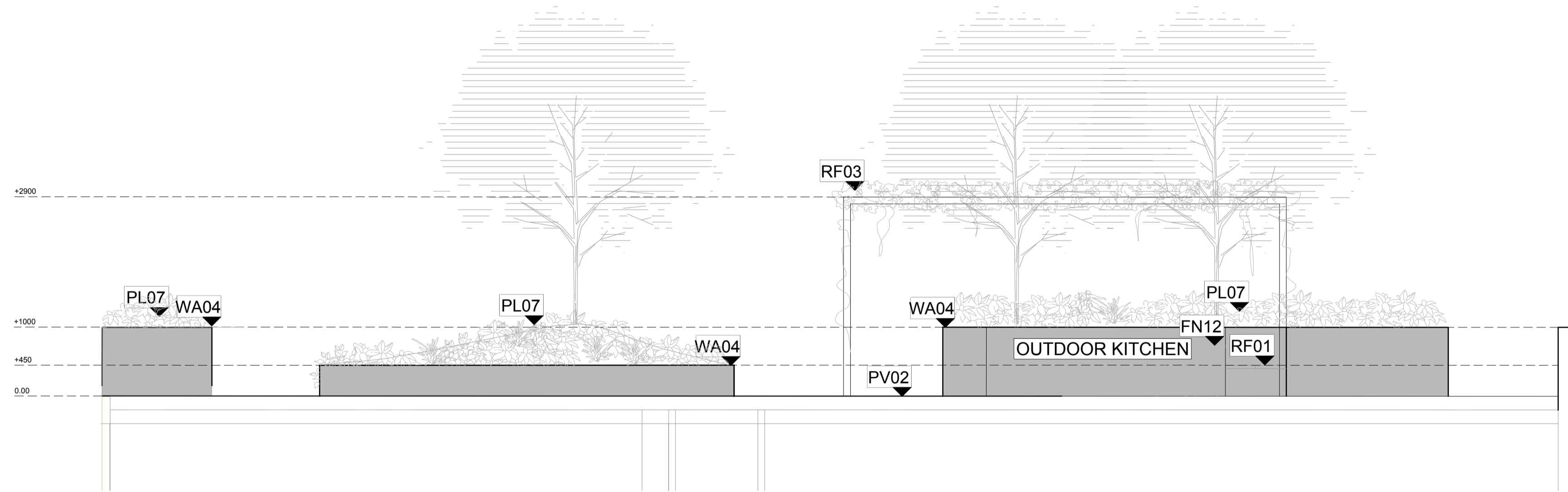
	CONSULTANT Hassell LTD ABN 24 007 711 435 Level 2, Pier 8/8, 23 Hickson Rd Sydney NSW 2000 Australia T +61 2 9101 2000 F +61 2 9101 2100 sydney@hassellstudio.com Nominated Architects NSW: Tony Grist 5350 Glenn Scott 5842 Ross de la Motte 7398	REFERENCE 	NORTH 	NOTES 1. Do not scale drawing. Written dimensions govern 2. All dimensions are in millimeters unless noted otherwise 3. All dimensions shall be verified on site before proceeding with the work. Hassell shall be notified in writing of any discrepancies. 4. This drawing must be read in conjunction with all relevant contracts, specifications and drawings. This drawing is an uncontrolled copy. Unless noted otherwise © Copyright of this drawing is vested in Hassell Ltd.	REV DESCRIPTION G FINAL	DATE 14 11 2022	CLIENT FRASERS PROPERTY AUSTRALIA PROJECT TELOPEA URBAN RENEWAL STAGE 1A DEVELOPMENT APPLICATION TELOPEA, NSW, 2117	STATUS DRAFT FOR INFORMATION DRAWING TITLE GENERAL ARRANGEMENT TILE 5	REVIEWED GD APPROVED DT DRAWING NO. HSL_S1A-2_L_1105	SCALE @ A1 1:200 PROJECT NO. 013595 REV NO. G
--	---	----------------------	------------------	--	-----------------------------------	---------------------------	--	--	--	---



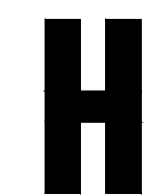
	CONSULTANT Hassell LTD ABN 24 007 711 435 Level2, Pier 8/823 Hickson Rd Sydney NSW 2000 Australia T +61 2 9101 2000 F +61 2 9101 2100 sydney@hassellstudio.com Nominated Architects NSW Tony Grist 6350 Glenn Scott 6842 Ross de la Motte 7398	REFERENCE 	NORTH 	NOTES 1. Do not scale drawing. Written dimensions govern 2. All dimensions are in millimeters unless noted otherwise 3. All dimensions shall be verified on site before proceeding with the work. Hassell shall be notified in writing of any discrepancies. 4. This drawing must be read in conjunction with all relevant contracts, specifications and drawings This drawing is an uncontrolled copy. Unless noted otherwise © Copyright of this drawing is vested in Hassell Ltd.	REV DESCRIPTION F FINAL E FINAL D FOR INFORMATION C FINAL B FOR INFORMATION A DRAFT FOR REVIEW	DATE 07 03 2022 09 07 2021 02 07 2021 16 02 2021 11 08 2020 09 07 2020	CLIENT FRASERS PROPERTY AUSTRALIA PROJECT TELOPEA URBAN RENEWAL STAGE 1A DEVELOPMENT APPLICATION TELOPEA, NSW, 2117	STATUS DRAFT FOR INFORMATION DRAWING TITLE GREEN ROOF PLAN	REVIEWED GD APPROVED DT DRAWING NO. HSL_S1A-2_L_1801	SCALE @ A1 1:200 PROJECT NO. 013595 REV NO. F
	<small>PRINT INFORMATION_ PRINTED BY: Georgina Darling_ON: 2022/10/13_USING PAGES SETUP: — USING PLOTSTYLE TABLE: halweight.ctb_PC3: DWG To PDF.pc3_PSLTSCALE: 1_LTSSCALE: 1.000000</small>									



01 COMMUNAL ROOF TERRACE - STAGE 1
L_1801 1:50@A1



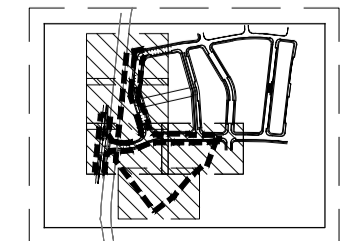
02 COMMUNAL ROOF TERRACE - STAGE 1
L_1801 1:50@A1



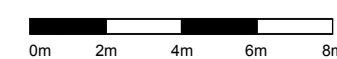
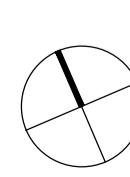
CONSULTANT

Hassell LTD ABN 24 007 711 435
Level2, Pier 8/8,23 Hickson Rd
Sydney NSW 2000 Australia
T +61 2 9101 2000
F +61 2 9101 2100
sydney@hassellstudio.com
Nominated Architects NSW:
Tony Grist 5350
Glenn Scott 5842
Ross de la Motte 7398

REFERENCE



NORTH



NOTES

1. Do not scale drawing. Written dimensions govern
 2. All dimensions are in millimeters unless noted otherwise
 3. All dimensions shall be verified on site before proceeding with the work. Hassell shall be notified in writing of any discrepancies.
 4. This drawing must be read in conjunction with all relevant contracts, specifications and drawings
- This drawing is an uncontrolled copy. Unless noted otherwise
© Copyright of this drawing is vested in Hassell Ltd.

REV DESCRIPTION

REV	DESCRIPTION	DATE
E	FINAL	07 03 2022
D	FINAL	09 07 2021
C	FINAL	16 02 2021
B	FOR INFORMATION	11 08 2020
A	DRAFT FOR REVIEW	09 07 2020

CLIENT

FRASERS PROPERTY AUSTRALIA

PROJECT

TELOPEA URBAN RENEWAL
STAGE 1A DEVELOPMENT APPLICATION
TELOPEA, NSW, 2117

STATUS

DRAFT FOR INFORMATION

DRAWING TITLE

SECTIONS - ROOFTOP

REVIEWED

GD

APPROVED

DT

DRAWING NO.

HSL_S1A-2_L_3011

SCALE @ A1

1:200

PROJECT NO.

013595

REV NO.

E