

GREY HOUSE PRECINCT,  
PYMBLE LADIES' COLLEGE

SSD-17424905

Architectural Design Report -  
Response to DPE RTS2

06.06.22

BVN

# RESPONSE TO INFORMATION REQUEST

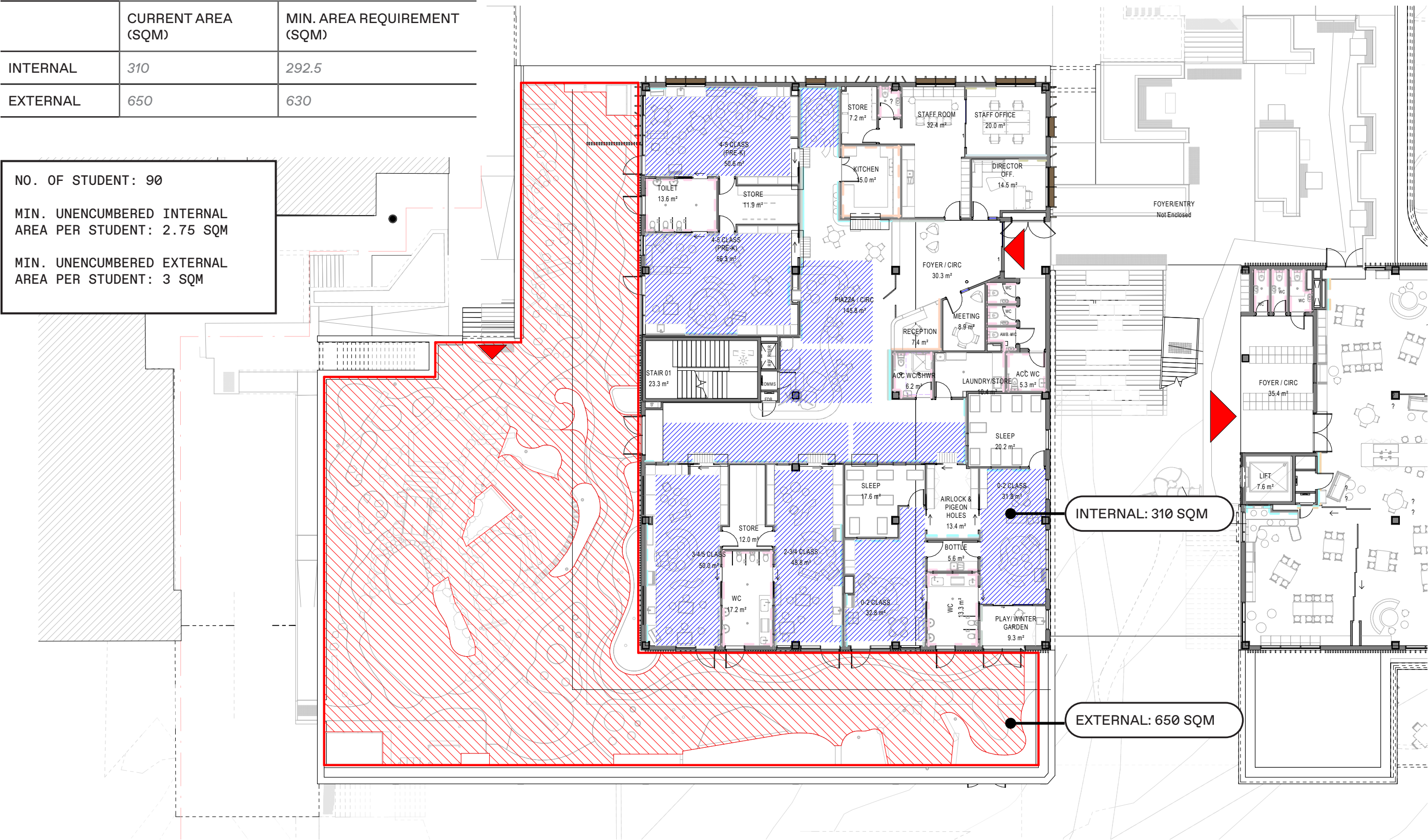
## ELC UNENCUMBERED AREA

	CURRENT AREA (SQM)	MIN. AREA REQUIREMENT (SQM)
INTERNAL	310	292.5
EXTERNAL	650	630

NO. OF STUDENT: 90

MIN. UNENCUMBERED INTERNAL AREA PER STUDENT: 2.75 SQM

MIN. UNENCUMBERED EXTERNAL AREA PER STUDENT: 3 SQM



● EXTERNAL UNENCUMBERED AREA, ● INTERNAL UNENCUMBERED AREA

# RESPONSE TO INFORMATION REQUEST

## Area Schedule

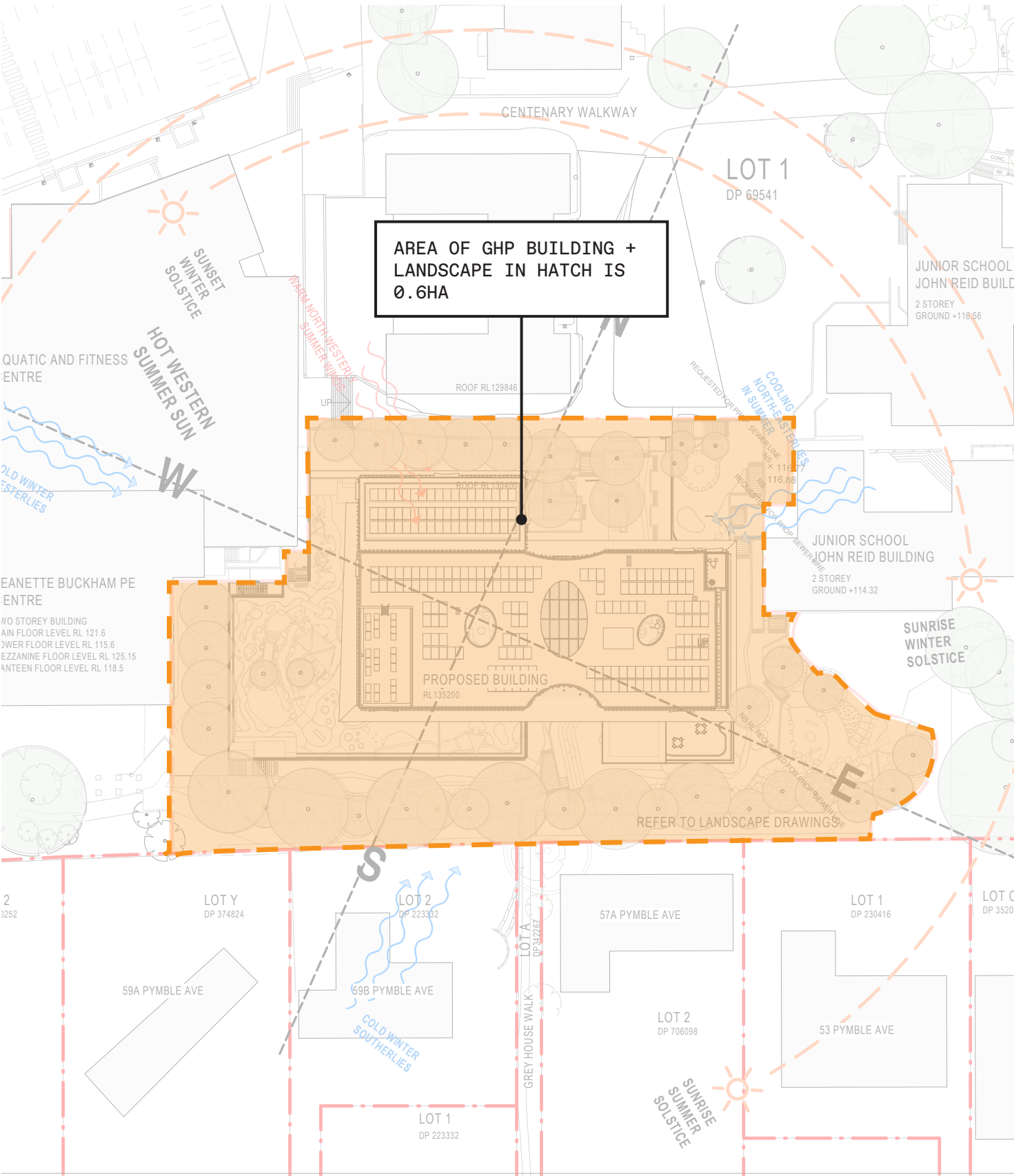
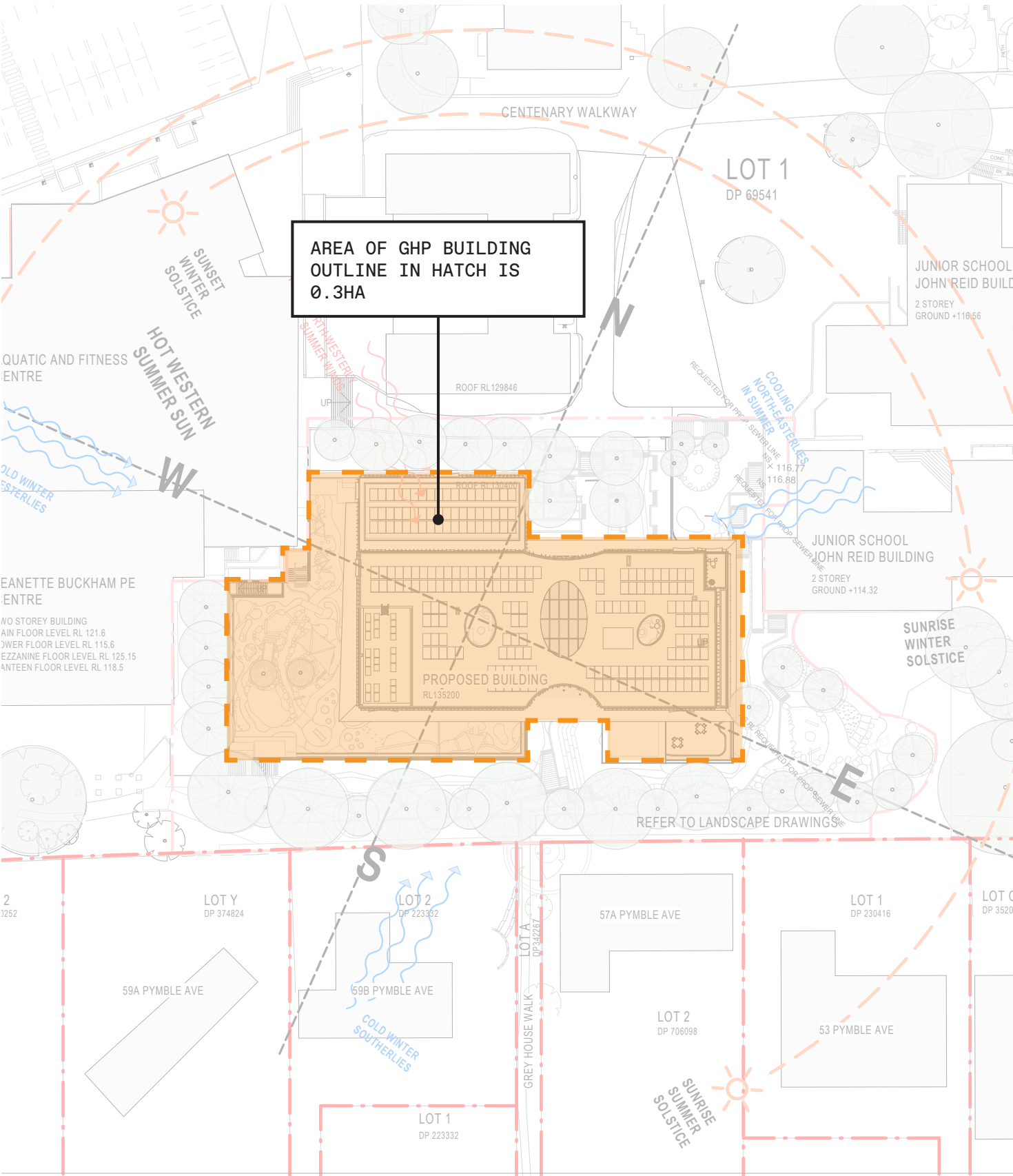
BVN

LEVEL	INTERNAL AREA (SQM)
LEVEL 00	847
LEVEL 01	1970
LEVEL 02	1093
LEVEL 03	1167
LEVEL 04	1760
TOTAL	5837

Note: Area is internal not GFA.

# RESPONSE TO INFORMATION REQUEST

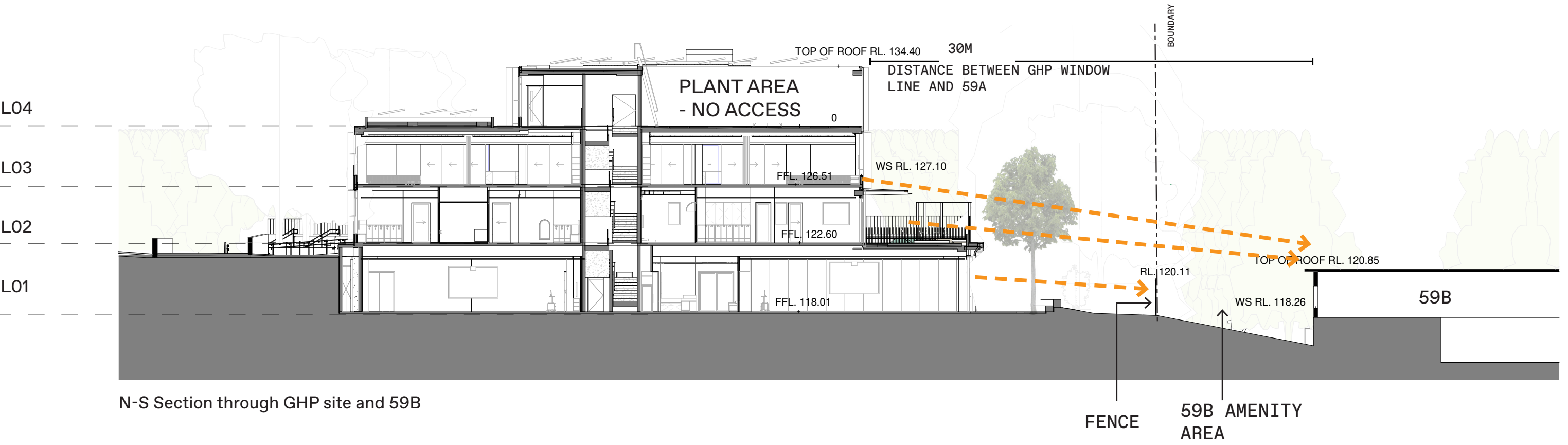
## Site Area





# RESPONSE TO INFORMATION REQUEST

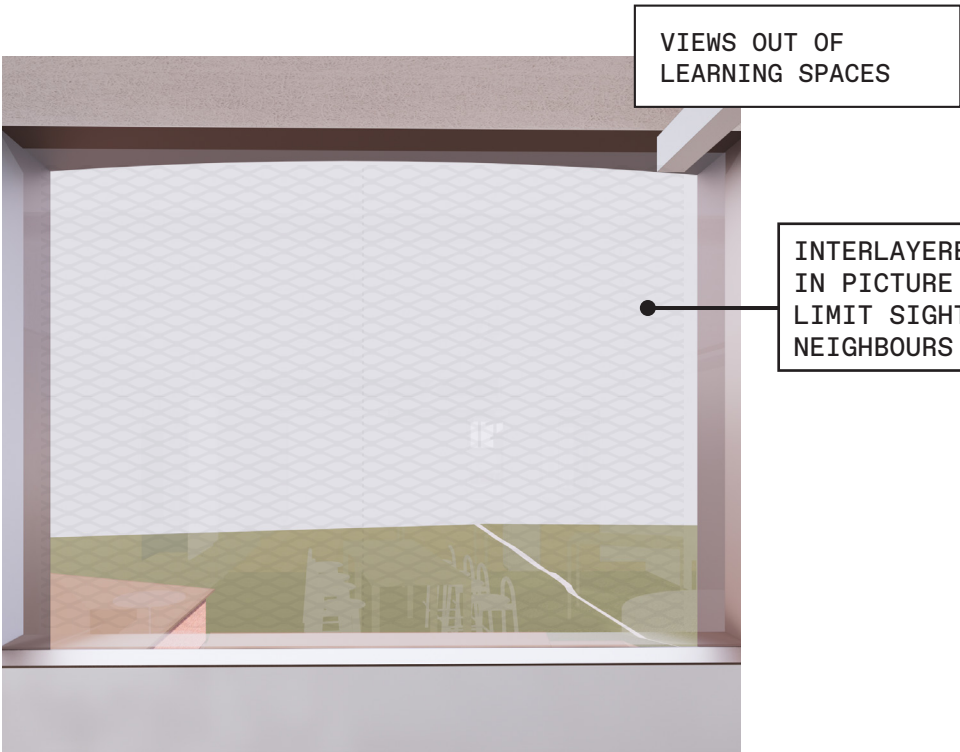
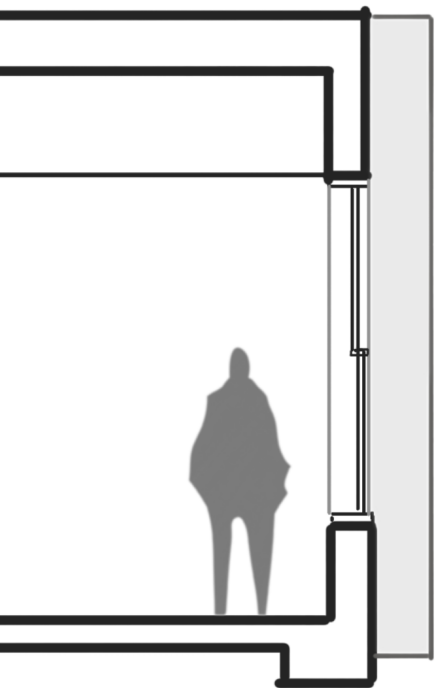
Visual Privacy of adjoining context



# RESPONSE TO INFORMATION REQUEST

Visual Privacy of adjoining context

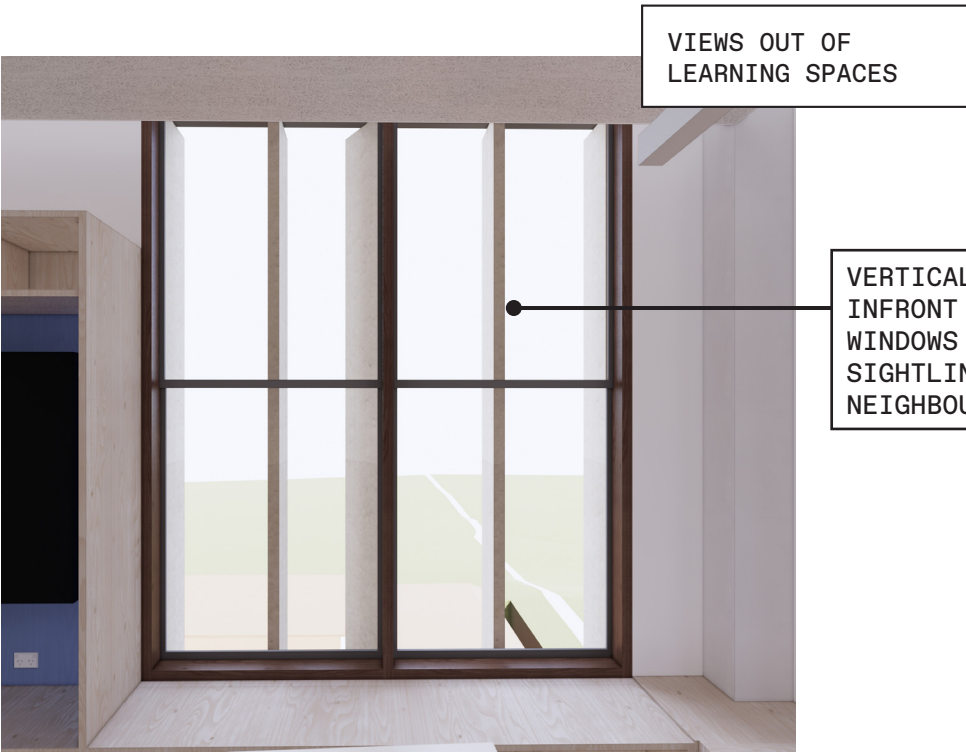
Level 03



VIEWS OUT OF  
LEARNING SPACES

INTERLAYERED MESH  
IN PICTURE WINDOWS  
LIMIT SIGHTLINE TO  
NEIGHBOURS

View towards 57A

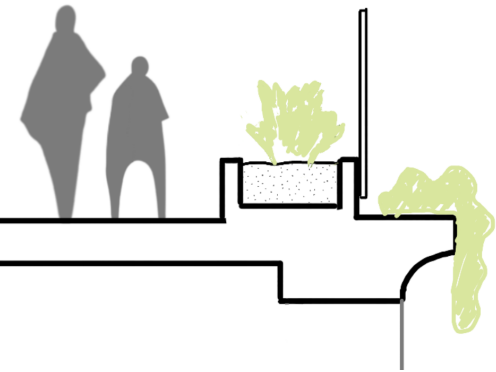


VIEWS OUT OF  
LEARNING SPACES

VERTICAL BAUGETTE  
INFRONT OF OPERABLE  
WINDOWS OBSCURE  
SIGHTLINE TO  
NEIGHBOURS

View towards 59B

Level 02



VIEW OUT OF ELC  
OUTDOOR TERRACE  
AREA

View towards 59B from  
terrace

LANDSCAPING INCORPATED  
TO PERIMETER OF  
TERRACE AND 1.8 TALL  
BALUSTRADE RESTRICT  
SIGHTLINE



VIEWS OUT OF  
LEARNING SPACES

View towards 57A



View towards 59B

VERTICAL BATTENS  
INFRONT OF WINDOWS  
OBSCURE SIGHTLINE TO  
NEIGHBOURS