



Amendments			Amendments		
Issue	Description	Date	Issue	Description	Date
10	ISSUED FOR GANSW 03	24/03/2021			
11	ISSUED FOR INFORMATION	07/04/2021			
12	ISSUED FOR CONSULTANTS	16/04/2021			
13	ISSUED TO BASIX	28/04/2021			
14	ISSUED FOR CONSULTANTS	10/05/2021			
A	ISSUED FOR DA	28/05/2021			
B	ISSUED FOR DA	01/07/2021			
C	ISSUED FOR REVIEW	08/11/2021			
D	ISSUED FOR DA	22/12/2021			
E	ISSUED FOR DA RFI	25/03/2022			
F	ISSUED FOR RFI	14/04/2022			

Consultant
Structural Engineer / Civil
Level 6, 73 Miller Street, North Sydney
NSW 2060
Consultant
Mechanical / Acoustic / Fire Engineer
Level 6, Building B, 207 Pacific Highway
St Leonards NSW 2065
Consultant
Hydraulics
Level 23, 101 Miller Street, North Sydney,
NSW 2060

TTW
STANTEC
JHA

Client
Billbergia Group Pty Ltd
Suite 101, 25 Angus St,
Meadowbank, NSW, 2114

Billbergia
creating communities®

GROUP GSA
Group GSA Pty Ltd ABN 76 002 113 779
Level 7, 80 William St East Sydney NSW
Australia 2011
www.groupgsa.com
T +612 9361 4144 F +612 9332 3458
architecture interior design urban design landscape
nom architect Lisa-Maree Carrigan 7568

Project Title
Eden Street Arnccliffe
Drawing Title
UPPER GROUND LEVEL
This drawing is the copyright of Group GSA Pty Ltd and may not be altered, reproduced or transmitted in any form or by any means in part or in whole without the written permission of Group GSA Pty Ltd.
All levels and dimensions are to be checked and verified on site prior to the commencement of any work, making of shop drawings or fabrication of components.
Do not scale drawings. Use figured Dimensions.

KEY:
B: BALCONY
WG: WINTER GARDEN
POS: PRIVATE OPEN SPACE
SL: SKYLIGHT

DA SUBMISSION

Plotted and checked by	PDS		
Verified	PDS	Approved	LMC
Drawing Created (date)		Drawing Created (by)	JK, SM, AR, EC, AF
Scale	Project No	Drawing No	Issue
1 : 250	180319	DA 2005	F

14/04/2022 11:42:28 AM

EDEN STREET



LEVEL 1

1:250

KEY:

B: BALCONY
WG: WINTER GARDEN
POS: PRIVATE OPEN SPACE
SL: SKYLIGHT



DA SUBMISSION

Amendments			Amendments		
Issue	Description	Date	Issue	Description	Date
8	ISSUED FOR GANSW 03	24/03/2021			
9	ISSUED FOR INFORMATION	07/04/2021			
10	ISSUED FOR CONSULTANTS	16/04/2021			
11	ISSUED TO BASIX	28/04/2021			
12	ISSUED FOR CONSULTANTS	10/05/2021			
A	ISSUED FOR DA	28/05/2021			
B	ISSUED FOR DA	01/07/2021			
C	ISSUED FOR REVIEW	08/11/2021			
D	ISSUED FOR DA	22/12/2021			
E	ISSUED FOR DA RFI	25/03/2022			
F	ISSUED FOR RFI	14/04/2022			

Consultant
Structural Engineer / Civil
Level 6, 73 Miller Street, North Sydney
NSW 2060
Consultant
TTW
Mechanical / Acoustic / Fire Engineer
Level 6, Building B, 207 Pacific Highway
St Leonards NSW 2065
Consultant
STANTEC
Hydraulics
Level 23, 101 Miller Street, North Sydney,
NSW 2060
JHA

Client
Billbergia Group Pty Ltd
Suite 101, 25 Angus St,
Meadowbank, NSW, 2114
Billbergia
creating communities®

GROUP GSA
Group GSA Pty Ltd ABN 76 002 113 779
Level 7, 60 William St East Sydney NSW
Australia 2011
www.groupgsa.com
T +612 9361 4144 F +612 9332 3458
architecture interior design urban design landscape
nom architect Lisa-Maree Carrigan 7568

Project Title
Eden Street Arncliffe

Drawing Title

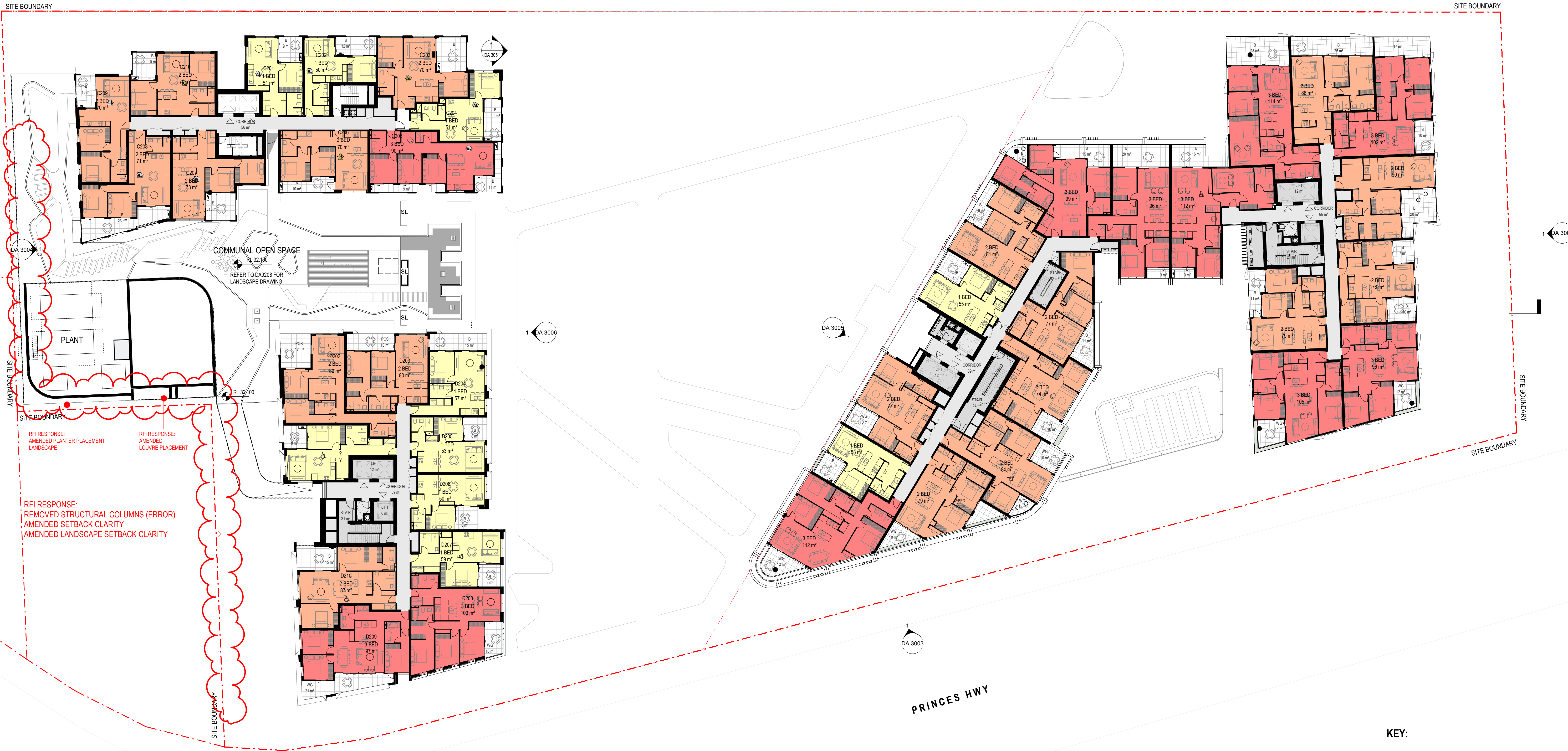
LEVEL 1

This drawing is the copyright of Group GSA Pty Ltd and may not be altered, reproduced or transmitted in any form or by any means in part or in whole without the written permission of Group GSA Pty Ltd.
All levels and dimensions are to be checked and verified on site prior to the commencement of any work, making of shop drawings or fabrication of components.
Do not scale drawings. Use figured Dimensions.

DA SUBMISSION			
Plotted and checked by	PDS		
Verified	PDS	Approved	LMC
Drawing Created (date)		Drawing Created (by)	JK, SM, AR, EC, AF
			22/10/2020
Scale	Project No	Drawing No	Issue
1:250	180319	DA 2006	F

14/04/2022 11:43:06 AM

EDEN STREET



1 GA - LV 2
1 : 250

KEY:

B: BALCONY
WG: WINTER GARDEN
POS: PRIVATE OPEN SPACE
SL: SKYLIGHT



DA SUBMISSION

Amendments			Amendments		
Issue	Description	Date	Issue	Description	Date
2	ISSUED FOR GANSW 03	24/03/2021			
3	ISSUED FOR INFORMATION	07/04/2021			
4	ISSUED FOR CONSULTANTS	16/04/2021			
5	ISSUED TO BASIX	28/04/2021			
6	ISSUED FOR CONSULTANTS	10/05/2021			
A	ISSUED FOR DA	28/05/2021			
B	ISSUED FOR DA	01/07/2021			
C	ISSUED FOR REVIEW	08/11/2021			
D	ISSUED FOR DA	22/12/2021			
E	ISSUED FOR DA RFI	25/03/2022			
F	ISSUED FOR RFI	14/04/2022			

Consultant
Structural Engineer / Civil
Level 6, 73 Miller Street, North Sydney
NSW 2060
Consultant
TTW
Mechanical / Acoustic / Fire Engineer
Level 6, Building B, 207 Pacific Highway
St Leonards NSW 2065
Consultant
STANTEC
Hydraulics
Level 23, 101 Miller Street, North Sydney,
NSW 2060
JHA

Client
Billbergia Group Pty Ltd
Suite 101, 25 Angus St,
Meadowbank, NSW, 2114

Billbergia
creating communities®

GROUP GSA
Group GSA Pty Ltd ABN 76 002 113 779
Level 7, 60 William St East Sydney NSW
Australia 2011
www.groupgsa.com
T +612 9361 4144 F +612 9332 3458
architecture interior design urban design landscape
nom architect Lisa-Maree Carrigan 7568

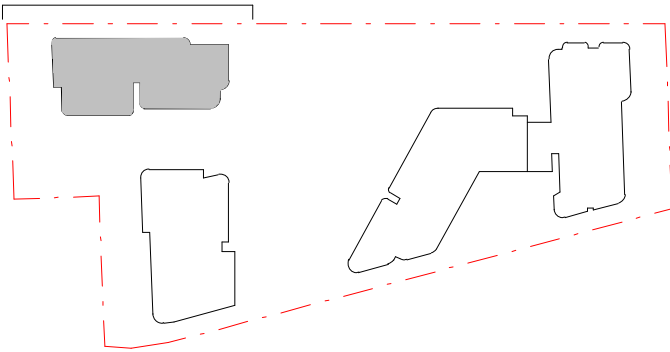
Project Title
Eden Street Arncliffe
Drawing Title
LEVEL 2
This drawing is the copyright of Group GSA Pty Ltd and may not be altered, reproduced or transmitted in any form or by any means in part or in whole without the written permission of Group GSA Pty Ltd.
All levels and dimensions are to be checked and verified on site prior to the commencement of any work, making of shop drawings or fabrication of components.
Do not scale drawings. Use figured Dimensions.

Plotted and checked by	PDS	Verified	PDS	Approved	LMC	Drawing Created (date)	Drawing Created (by)	JK, SM, AR, EC, AF	12/02/20
Scale	Project No	Drawing No	Issue						
1 : 250	180319	DA 2007	F						

14/04/2022 11:43:30 AM



14/04/2022 11:49:08 AM



DA SUBMISSION			
Plotted and checked by		PDS	
Verified	PDS	Approved	LMC
Drawing Created (date)		Drawing Created (by) JK, SM, AR, EC, AF	
20/12/21			
Scale	Project No	Drawing No	Issue
As indicated	180319	DA 3031	E

Project Title

Eden Street Arcliffce

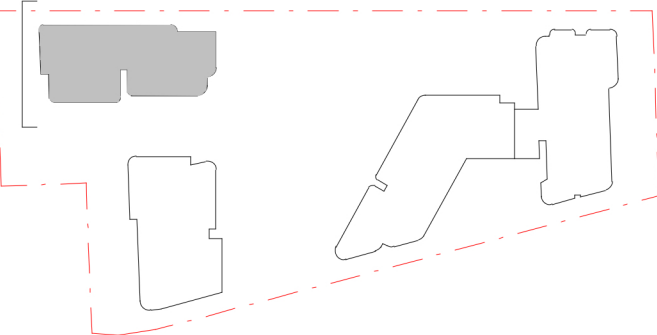
Drawing Title

TOWER C - NORTH WEST ELEVATION

This drawing is the copyright of Group GSA Pty Ltd and may not be altered, reproduced or transmitted in any form or by any means in part or in whole without the written permission of Group GSA Pty Ltd.

All levels and dimensions are to be checked and verified on site prior to the commencement of any work, making of shop drawings or fabrication of components.

Do not scale drawings. Use figured dimensions.



- | METAL | |
|---------|---|
| MT 01 - | METAL FACADE ELEMENTS
SILVER/GREY TITANIUM |
| MT 02 - | METAL FACADE ELEMENTS AND
CLADDING TEAL ZINC |
| MT 03 - | METAL FACADE ELEMENTS AND
CLADDING BLACK |
| MT 04 - | FEATURE METAL TO ENTRANCES
AND KIOSK BRUSHED
ALUMINUM/SIMILAR |
| PT-01 - | PREFINISHED PANEL /
METAL PANEL, BRONZE LOOK |

- ## CONCRETE
- | | |
|-----------|-----------------------------------|
| CONC 01 - | PRECAST CONCRETE GLOSS FINISH |
| CONC 02 - | PRECAST CONCRETE WHITE |
| CONC 03 - | PRECAST CONCRETE BLACK |
| CONC 04 - | CONCRETE DARK FINISH |
| CONC 05 - | PROFILED PANEL, WITH DARK FINISH |
| CONC 06 - | PROFILED PANEL, WITH LIGHT FINISH |

- | | |
|--------------|--|
| BRICK | |
| BR 01 - | BRICK, NATURAL. STRETCHER BOND PATTERN |
| BR 02 - | BRICK, GLASS. STRETCHER BOND PATTERN |

- | SCREENS | |
|---------|---|
| SC 01 - | PERFORATED SCREENS
BRONZE/GOLD METAL |
| SC 02 - | VERTICAL BATTEN SCREEN
TO MATCH MT01 |
| SC 03 - | VERTICAL BATTEN SCREEN
OFF WHITE |
| SC 04 - | VERTICAL BATTEN SCREEN
TO MATCH MT03 |

- | ALUMINIUM FRAMED GLAZING AND BALUSTRADES | |
|--|-------------------------------------|
| GB 01 - | GLASS BALUSTRADE WITH GREY GLASS |
| GB 02 - | CLEAR GLASS |
| GB 03 - | BRONZE GLASS |
| GB 04 - | GLASS BALUSTRADE WITH FRITTED GLASS |
| AL 01 - | ALUMINIUM FRAMED WINDOW GREY GLASS |
| AL 02 - | CLEAR GLASS |
| AL 03 - | BRONZE GLASS |
| WG 01 - | WINTERGARDEN GREY GLASS |
| WG 02 - | CLEAR GLASS |
| MB 01 - | METAL BALUSTRADE TEAL ZINC COLOUR |
| MB 02 - | METAL BALUSTRADE PERFORATED METAL |
| MB 03 - | METAL BALUSTRADE PALISADE |

Plotted and checked by PDS

Verified	PDS	Approved	LMC
Drawing Created (date)		Drawing Created (by) JK, SM, AR, EC, AF	
20/12/21			
Scale	Project No	Drawing No	Issue
As indicated	180319	DA 3033	E

Project Title

Eden Street Arnccliffe

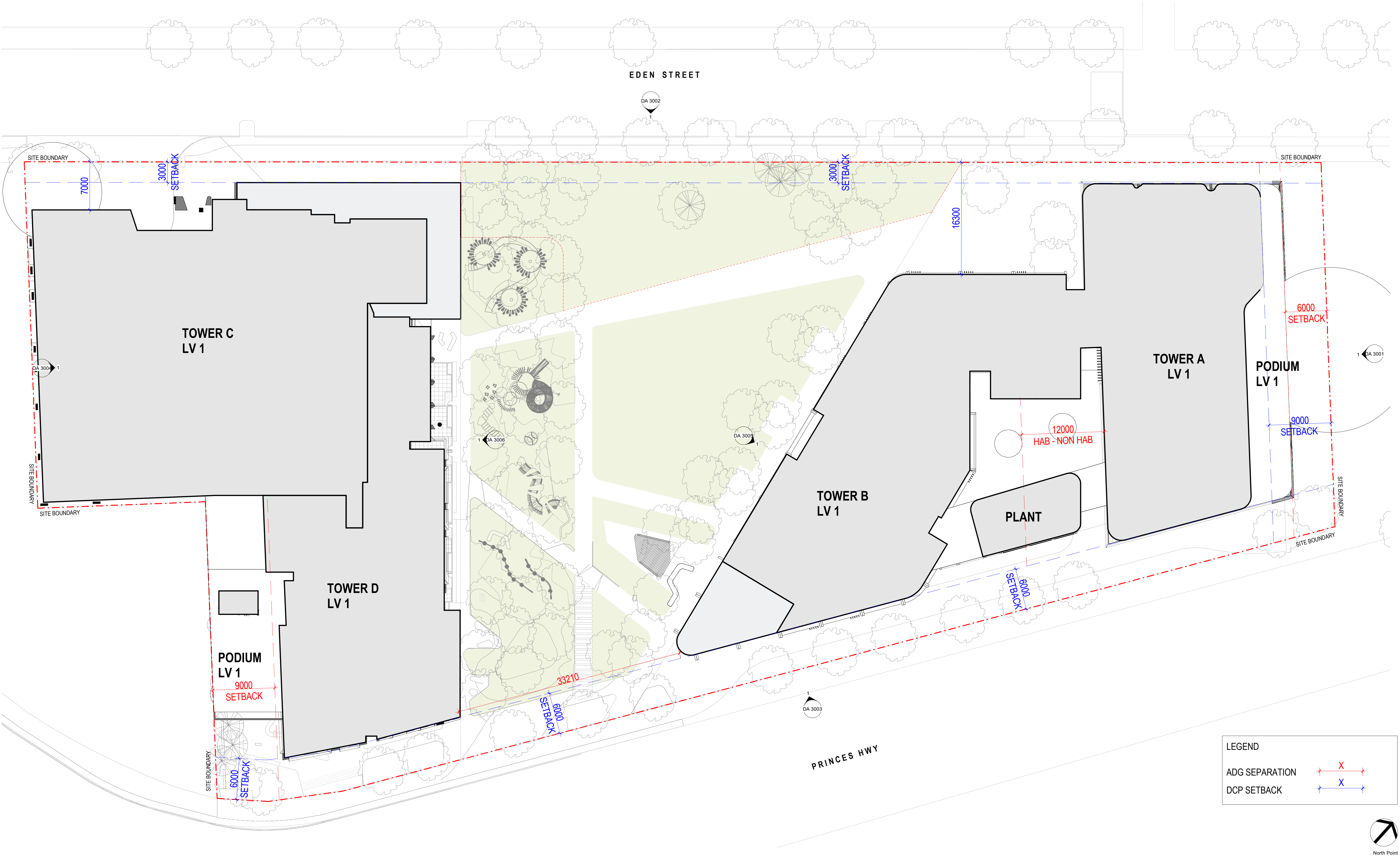
Drawing Title

TOWER C - SOUTH WEST ELEVATION

This drawing is the copyright of Group GSA Pty Ltd and may not be altered, reproduced or transmitted in any form or by any means in part or in whole without the written permission of Group GSA Pty Ltd.

All levels and dimensions are to be checked and verified on site prior to the commencement of any work, making of shop drawings or fabrication of components.

Do not scale drawings. Use figured Dimensions.



LEGEND

ADG SEPARATION

DCP SETBACK

X

X



North Point

DA SUBMISSION

Plotted and checked by		PDS	
Verified	PDS	Approved	LMC
Drawing Created (date)		Drawing Created (by) JK, SM, AR, EC, AF	
03/15/21			
Scale	Project No	Drawing No	Issue
1 : 250	180319	DA 4120	B

Amendments			Amendments		
Issue	Description	Date	Issue	Description	Date
A	ISSUED FOR DA	28/05/2021			
B	ISSUED FOR DA	22/12/2021			

Consultant

Structural Engineer / Civil

Level 6, 73 Miller Street, North Sydney
NSW 2060

Consultant

TTW

Mechanical / Acoustic / Fire Engineer

Level 6, Building B, 207 Pacific Highway
St Leonards NSW 2065

Consultant

STANTEC

Hydraulics

Level 23, 101 Miller Street, North Sydney,
NSW 2060

JHA

Client

Billbergia Group Pty Ltd

Suite 101, 25 Angas St,
Meadowbank, NSW, 2114

Billbergia

creating communities®

GROUP GSA

Group GSA Pty Ltd ABN 76 002 113 779
Level 7, 80 William St East Sydney NSW
Australia 2011
www.groupgsa.com

T +612 9361 4144 F +612 9332 3458

architecture interior design urban design landscape
nom architect Lisa-Maree Carrigan 7568

Project Title

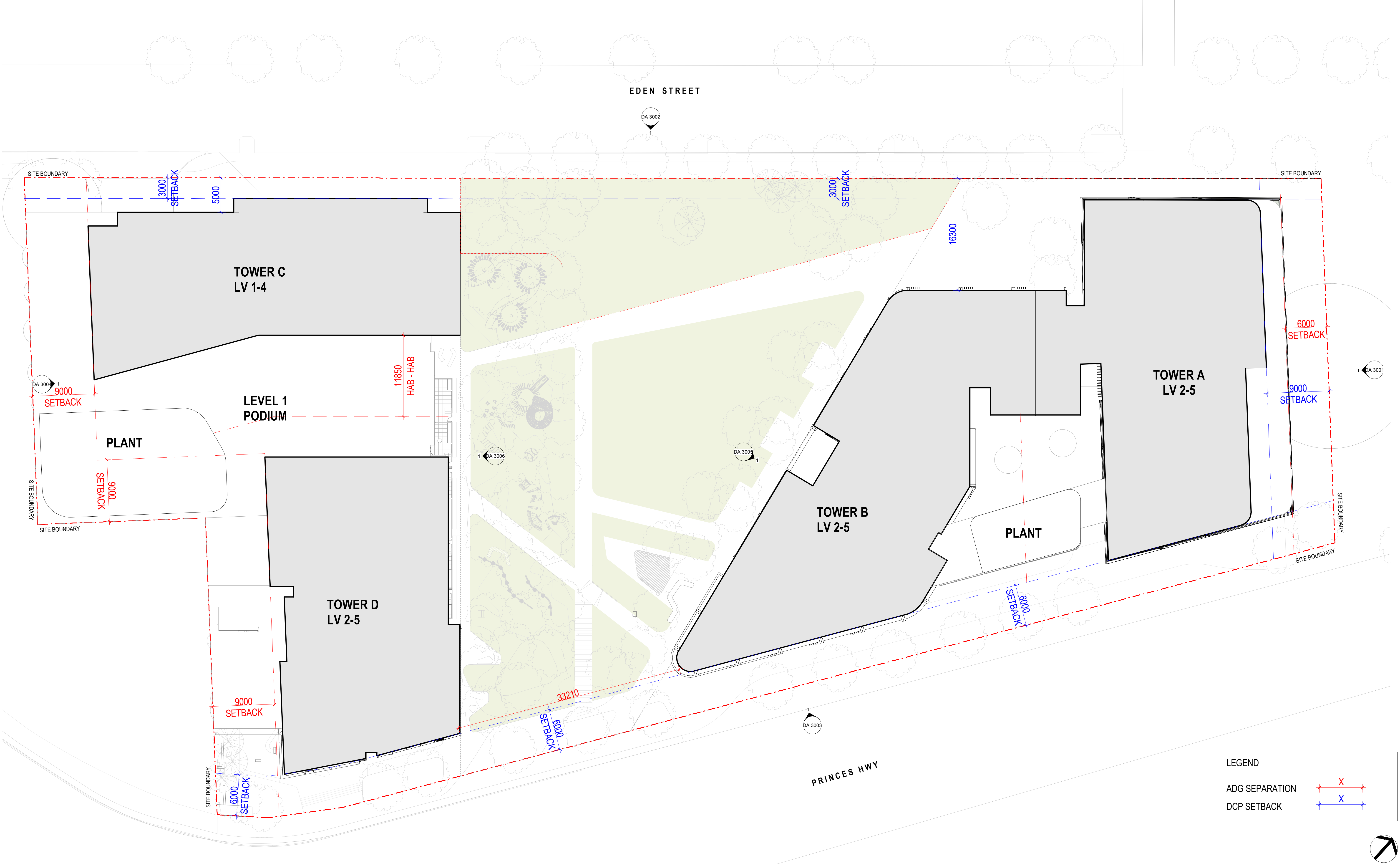
Eden Street Arncliffe

Drawing Title

BUILDING SEPARATION - LEVEL 1

This drawing is the copyright of Group GSA Pty Ltd and may not be altered, reproduced or transmitted in any form or by any means in part or in whole without the written permission of Group GSA Pty Ltd.
All levels and dimensions are to be checked and verified on site prior to the commencement of any work, making of shop drawings or fabrication of components.
Do not scale drawings. Use figured Dimensions.

22/12/2021 7:17:47 PM



LEGEND

ADG SEPARATION

DCP SETBACK

X

X



North Point

DA SUBMISSION

Plotted and checked by		PDS	
Verified	PDS	Approved	LMC
Drawing Created (date)		Drawing Created (by) JK, SM, AR, EC, AF	
02/18/21			
Scale	Project No	Drawing No	Issue
1 : 250	180319	DA 4121	B

Amendments		Amendments	
Issue	Description	Issue	Description
A	ISSUED FOR GANSW 03	24/03/2021	
B	ISSUED FOR DA	28/05/2021	
	ISSUED FOR DA	22/12/2021	

Consultant

Structural Engineer / Civil

Level 6, 73 Miller Street, North Sydney

NSW 2060

Consultant

TTW

Mechanical / Acoustic / Fire Engineer

Level 6, Building B, 207 Pacific Highway

St Leonards NSW 2065

Consultant

STANTEC

Hydraulics

Level 23, 101 Miller Street, North Sydney,

NSW 2060

JHA

Client

Billbergia Group Pty Ltd

Suite 101, 25 Angus St,

Meadowbank, NSW, 2114

Billbergia

creating communities®

GROUP GSA

Group GSA Pty Ltd ABN 76 002 113 779

Level 7, 60 William St East Sydney NSW

Australia 2011

www.groupgsa.com

T +612 9361 4144 F +612 9332 3458

architecture interior design urban design landscape

nom architect Lisa-Maree Carrigan 7568

Project Title

Eden Street Arncliffe

Drawing Title

BUILDING SEPARATION -

TYPICAL LOWER

This drawing is the copyright of Group GSA Pty Ltd and may not be altered, reproduced or transmitted in any form or by any means in part or in whole without the written permission of Group GSA Pty Ltd.

All levels and dimensions are to be checked and verified on site prior to the commencement of any work, making of shop drawings or fabrication of components.

Do not scale drawings. Use figured Dimensions.

22/12/2021 7:18:14 PM



Amendments			Amendments		
Issue	Description	Date	Issue	Description	Date
A	ISSUED FOR DA	28/05/2021			
B	ISSUED FOR DA	22/12/2021			

Consultant	
Structural Engineer / Civil	
Level 6, 73 Miller Street, North Sydney	
NSW 2060	TTW
Consultant	
Mechanical / Acoustic / Fire Engineer	
Level 6, Building B, 207 Pacific Highway	
St Leonards NSW 2065	STANTEC
Consultant	
Hydraulics	
Level 23, 101 Miller Street, North Sydney,	
NSW 2060	JHA

Client	
Billbergia Group Pty Ltd Suite 101, 25 Angus St, Meadowbank, NSW, 2114	
	

GROUP GSA

Group GSA Pty Ltd ABN 76 002 113 779
Level 7, 60 William St East Sydney NSW
Australia 2011
www.groupgsa.com

T +612 9361 4144 F +612 9332 3458


architecture interior design urban design landscape
nom architect Lisa-Maree Carrigan 7568

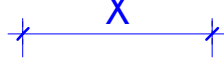
Project Title
Eden Street Arncliffe

Drawing Title
BUILDING SEPARATION - LEVEL 6

This drawing is the copyright of Group GSA Pty Ltd and may not be altered, reproduced or transmitted in any form or by any means in part or in whole without the written permission of Group GSA Pty Ltd.
All levels and dimensions are to be checked and verified on site prior to the commencement of any work, making of shop drawings or fabrication of components.
Do not scale drawings. Use figured Dimensions.

LEGEND

ADG SEPARATION 

DCP SETBACK 

DA SUBMISSION

Plotted and checked by PDS

Verified PDS Approved LMC

Drawing Created (date) Drawing Created (by) JK, SM, AR, EC, AF

03/15/21

Scale Project No Drawing No Issue

1 : 250 180319 DA 4122 B

22/12/2021 7:18:53 PM



Amendments		
Issue	Description	Date
A	ISSUED FOR GANSW 03	24/03/2021
B	ISSUED FOR DA	28/05/2021
B	ISSUED FOR DA	22/12/2021


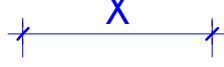
Amendments		
Issue	Description	Date
A	ISSUED FOR GANSW 03	24/03/2021
B	ISSUED FOR DA	28/05/2021
B	ISSUED FOR DA	22/12/2021

Consultant	Structural Engineer / Civil	TTW
	Level 6, 73 Miller Street, North Sydney	
	NSW 2060	
Consultant	Mechanical / Acoustic / Fire Engineer	STANTEC
	Level 6, Building B, 207 Pacific Highway	
	St Leonards NSW 2065	
Consultant	Hydraulics	JHA
	Level 23, 101 Miller Street, North Sydney,	
	NSW 2060	

Client	Billbergia Group Pty Ltd
	Suite 101, 25 Angus St,
	Meadowbank, NSW, 2114
	
	Billbergia
	creating communities®

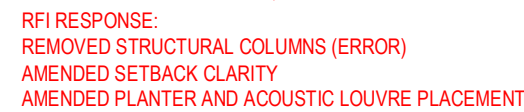

Group GSA Pty Ltd ABN 76 002 113 779
Level 7, 60 William St East Sydney NSW
Australia 2011
www.groupgsa.com
T +612 9361 4144 F +612 9332 3458
architecture interior design urban design landscape
nom architect Lisa-Maree Carrigan 7568

Project Title	Eden Street Arncliffe
Drawing Title	BUILDING SEPARATION - TYPICAL UPPER
This drawing is the copyright of Group GSA Pty Ltd and may not be altered, reproduced or transmitted in any form or by any means in part or in whole without the written permission of Group GSA Pty Ltd.	
All levels and dimensions are to be checked and verified on site prior to the commencement of any work, making of shop drawings or fabrication of components.	
Do not scale drawings. Use figured Dimensions.	

LEGEND	
ADG SEPARATION	
DCP SETBACK	

DA SUBMISSION			
Plotted and checked by	PDS		
Verified	PDS	Approved	LMC
Drawing Created (date)		Drawing Created (by)	JK, SM, AR, EC, AF
			02/18/21
Scale	Project No	Drawing No	Issue
1 : 250	180319	DA 4123	B

22/12/2021 7:18:56 PM



1 : 100



2

Amendments		
Issue	Description	Date

TTW

STANTEC

JHA

Client
Billbergia Group Pty Ltd
Suite 101, 25 Angus St,
Meadowbank, NSW, 2114



GROUP USA

Group GSA Pty Ltd ABN 76 002 113 779
Level 7, 80 William St East Sydney NSW

Australia 2011
www.groupgsa.com

T +612 9361 4144 F +612 9332 3458

architecture interior design urban design landscape
nom architect Lisa-Maree Carrigan 7568

Project Title

Eden Street Arncliffe

Drawing Title
CONTEXT STUDY - PODIUM - 52

This drawing is the copyright of Group GSA Pty Ltd and may not be altered, reproduced or transmitted in any form or by any means in part or in whole without the written permission of Group GSA Pty Ltd.
All levels and dimensions are to be checked and verified on site prior to the commencement of any work, making of shop drawings or fabrication of components.
Do not scale drawings. Use figured Dimensions.

DA SUBMISSION

Plotted and checked by PDS

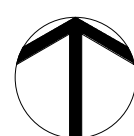
Verified PDS Approved LMC

Drawing Created (date) Drawing Created (by) JK, SM, AR, EC, AF

04/11/22

Scale	Project No	Drawing No	Issue
-------	------------	------------	-------

1 : 100 180319 DA 4584 A



14/04/2022 11:53:25 AM