

# PROPOSED MIXED-USE DEVELOPMENT - SSDA 11429726

## Eden Street & Princes Highway, Arncliffe Desktop Environmental Wind Study

### Prepared for:

Arncliffe Eden Property Pty Ltd  
c/o Billbergia  
Suite 101, 25 Angas Street  
MEADOWBANK NSW 2114

SLR Ref: 610.30190-R01  
Version No: -v1.4  
March 2022



## PREPARED BY

SLR Consulting Australia Pty Ltd  
ABN 29 001 584 612  
Tenancy 202 Submarine School, Sub Base Platypus, 120 High Street  
North Sydney NSW 2060 Australia

T: +61 2 9427 8100  
E: sydney@slrconsulting.com www.slrconsulting.com

## BASIS OF REPORT

This report has been prepared by SLR Consulting Australia Pty Ltd (SLR) with all reasonable skill, care and diligence, and taking account of the timescale and resources allocated to it by agreement with Arncliffe Eden Property Pty Ltd (the Client). Information reported herein is based on the interpretation of data collected, which has been accepted in good faith as being accurate and valid.

This report is for the exclusive use of the Client. No warranties or guarantees are expressed or should be inferred by any third parties. This report may not be relied upon by other parties without written consent from SLR.

SLR disclaims any responsibility to the Client and others in respect of any matters outside the agreed scope of the work.

## DOCUMENT CONTROL

Reference	Date	Prepared	Checked	Authorised
610.30190-R01-v1.4	22 March 2022	James Cleary	Dr Neihad Al-Khalidy	Dr Neihad Al-Khalidy
610.30190-R01-v1.3	28 June 2021	Dr Peter Georgiou	Dr Neihad Al-Khalidy	Dr Neihad Al-Khalidy
610.30190-R01-v1.2	21 June 2021	Dr Peter Georgiou	Dr Neihad Al-Khalidy	Dr Neihad Al-Khalidy
610.30190-R01-v1.1	1 June 2021	Dr Peter Georgiou	Dr Neihad Al-Khalidy	Dr Neihad Al-Khalidy
610.30190-R01-v1.0	24 May 2021	Dr Peter Georgiou	Dr Neihad Al-Khalidy	Dr Neihad Al-Khalidy

## EXECUTIVE SUMMARY

SLR Consulting Australia Pty Ltd (SLR) has been engaged by Arncliffe Eden Property Pty Ltd to assess the wind impact on the immediate surrounds of a proposed Mixed-Use Development (herein the Project) located at Eden Street and Princes Highway, Arncliffe – refer **Figure 1**.

The present study is a qualitative (expert opinion) study of potential wind impacts.

This initial assessment has been made on the basis of our best engineering judgment and on the experience gained from (decades of) scale-model Wind Tunnel Testing and CFD Simulation Modelling of a range of similar scale developments.

This assessment is submitted to the Department of Planning, Industry and Environment (DPIE) in support of a State Significant Development Application (SSDA-11429726) for the development of the Project for the purposes of a mixed-use precinct with open space, retail, and residential uses, comprising social and market housing as part of the NSW Land and Housing Corporation (LAHC)'s 'Communities Plus' program.

### Local Wind Climate

On the basis of long-term wind records obtained from the Bureau of Meteorology stations weather at Sydney Kingsford Smith Airport, SLR has determined that key prevailing wind directions of interest are the northeast and south/southeast for summer/early autumn and west quadrant winds for winter/early spring.

### Future Wind Environment

In terms of the *future* wind environment with the proposed Development, the following features are noted as being of most significance:

- The proposed Development's main residential blocks are set back from its two perimeter street frontages with extensive landscaping (large trees) planned along both Eden Street and Princes Highway.
- Areas potentially requiring wind mitigation are largely within the site, especially the elevated Communal Spaces and Roof Gardens.
- Windbreak recommendations, all of which will be implemented in the design of the development, have been made to assist in ameliorating potentially adverse winds identified in this study. Accordingly, all affected areas should be able to comply with the recommended wind acceptability criteria – refer **Section 7** and **Figures 8 and 9** for details.

## CONTENTS

<b>1</b>	<b>INTRODUCTION .....</b>	<b>5</b>
<b>2</b>	<b>PROPOSED DEVELOPMENT OVERVIEW.....</b>	<b>6</b>
2.1	Development Site Location.....	6
2.2	Proposed Development Description.....	6
2.3	Surrounding Built Environment .....	10
<b>3</b>	<b>SYDNEY'S WIND CLIMATE .....</b>	<b>11</b>
3.1	Seasonal Variations of Sydney's Regional Wind Climate.....	11
<b>4</b>	<b>BUILDING-WIND INTERACTION – GENERAL OBSERVATIONS.....</b>	<b>12</b>
<b>5</b>	<b>WIND ACCEPTABILITY CRITERIA .....</b>	<b>13</b>
5.1	Standard Local Government Criteria .....	13
5.2	Application of Wind Criteria .....	13
<b>6</b>	<b>WIND IMPACTS OF THE PROPOSED REDEVELOPMENT .....</b>	<b>14</b>
6.1	Areas of Interest in Relation to Wind Impact .....	14
6.2	Future Wind Impact at All Areas of Interest.....	14
<b>7</b>	<b>WIND MITIGATION RECOMMENDATIONS .....</b>	<b>20</b>
7.1	Already Planned Wind Mitigation.....	20
7.2	Additional Wind Mitigation Recommendations .....	21
7.3	Upper Level Balconies.....	25
<b>8</b>	<b>CONCLUSIONS .....</b>	<b>26</b>

## TABLES

Table 1	Standard Local Government Wind Acceptability Criteria .....	13
---------	---	----

## FIGURES

Figure 1	Proposed Development Site Location.....	6
Figure 2	Representative Plans of the Proposed Development .....	7
Figure 3	Nearby Similar Height Residential Buildings .....	10
Figure 4	Sydney Airport (Bureau of Meteorology Station) Seasonal Wind Roses (1999-2017) .....	11
Figure 5	Wind Flow Patterns Past Regular Shaped Buildings .....	12
Figure 6	Wind Flow Patterns Past Groups of Buildings.....	12
Figure 7	Planned Landscaping at Lower and Upper Ground Levels and Roof Gardens.....	20
Figure 8	Wind Mitigation Recommendations .....	22
Figure 9	Upper Level Balconies Potentially Exposed to Adverse Wind Conditions .....	25

# 1 INTRODUCTION

SLR Consulting Australia Pty Ltd (SLR) has been engaged by Billbergia to assess the wind impact on the immediate surrounds of a proposed Mixed-Use Precinct (herein the Project) located at 26-42 Eden Street and 171-179 Princes Highway, Arncliffe.

The present study is a qualitative (expert opinion) study of potential wind impacts. It is intended to follow this up with a model-scale Wind Tunnel Environmental Test to reliably quantify these impacts and confirm the efficacy of recommended wind mitigation treatments.

This initial assessment has been made on the basis of our best engineering judgment and on the experience gained from (decades of) scale-model Wind Tunnel Testing and CFD Simulation Modelling of a range of similar scale developments.

## Objective of the Study

This assessment is submitted to the Department of Planning, Industry and Environment (DPIE) in support of a State Significant Development Application (SSDA-11429726) for the development of the Project for the purposes of a mixed-use precinct with open space, retail, and residential uses, comprising social and market housing as part of the NSW Land and Housing Corporation (LAHC)'s 'Communities Plus' program.

In accordance with section 4.39 of the Environmental Planning & Assessment Act 1979 (EP&A Act), the Secretary's Environmental Assessment Requirements (SEARs) for SSDA-11429726 were issued on 18 December 2020.

This report has been prepared in response to the following SEARs elements:

### 5. Public domain

The EIS must demonstrate how the development:

- maximises the amount, access to and quality of public spaces (including open space, public facilities and streets/plazas within and surrounding the site)
- reflects relevant design guidelines and advice from Council and the Department
- ensures the public space is welcoming, attractive and accessible for all
- maximise permeability and connectivity
- ensures public spaces have excellent amenity, suitable for their intended use, such as through adequate facilities, solar access, shade and wind protection
- maximises street activation
- minimises potential vehicle, bicycle and pedestrian conflicts

### 7. Environmental amenity

The EIS must:

- demonstrate how the proposal achieves a high level of environmental amenity within the proposal and on surrounding buildings, assessing impacts associated with view loss, ventilation, pedestrian movement, access to landscape and outdoor spaces, visual privacy, lighting and wind
- provide a solar access analysis of the overshadowing impacts of the development within the site, on surrounding buildings and public spaces (during summer and winter solstice and spring and autumn equinox) at hourly intervals between 9am and 3pm, when compared to the existing situation and a compliant development
- provide an assessment of the development against State Environmental Planning Policy No 65 - Design Quality of Residential Apartment Development and the associated guidelines.

## 2 PROPOSED DEVELOPMENT OVERVIEW

### 2.1 Development Site Location

The proposed Development is bounded by Eden Street to the northwest and Princes Highway to the Southeast. The intersection of Princes Highway, Forest Road and Wickham Street lies just to the south - refer **Figure 1**.

**Figure 1** Proposed Development Site Location



### 2.2 Proposed Development Description

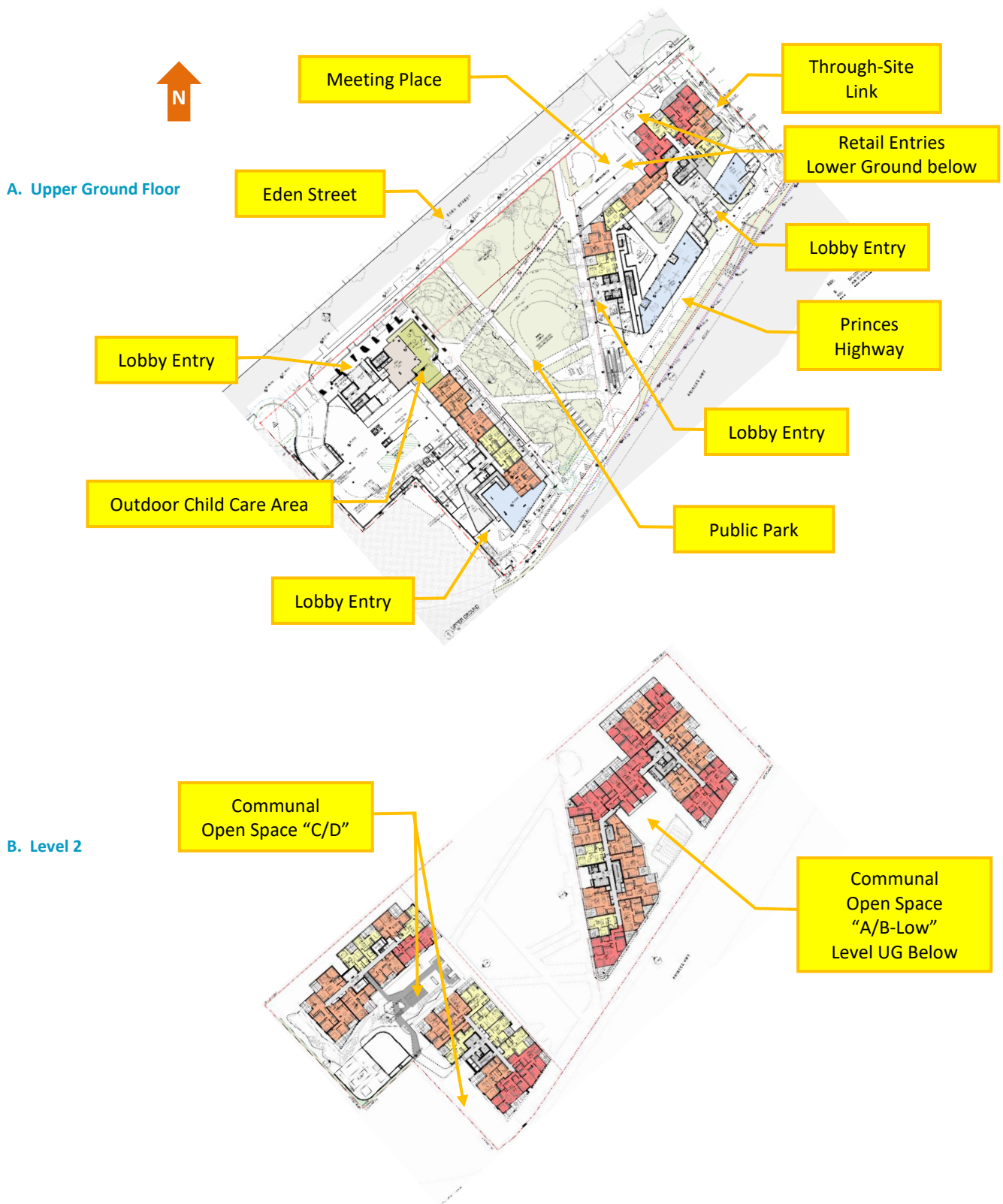
SSDA-11429726 seeks approval for the following mixed-use development:

- Demolition of all existing buildings and structures on the site, site preparation works, excavation and tree removal;
- The construction of a mixed-use development comprising:
  - 744 apartments across (4) buildings "A", "B", "C", "D", between 19-23 storeys in height;
  - 3,353 m<sup>2</sup> retail gross floor area; 236 m<sup>2</sup> for a future childcare centre; 2,893 m<sup>2</sup> of communal open space; and
  - 4,870 m<sup>2</sup> of publicly accessible open space including a 4,000 m<sup>2</sup> park, an 870 m<sup>2</sup> public plaza (meeting space), and through site link connecting Eden Street and the Princes Highway.



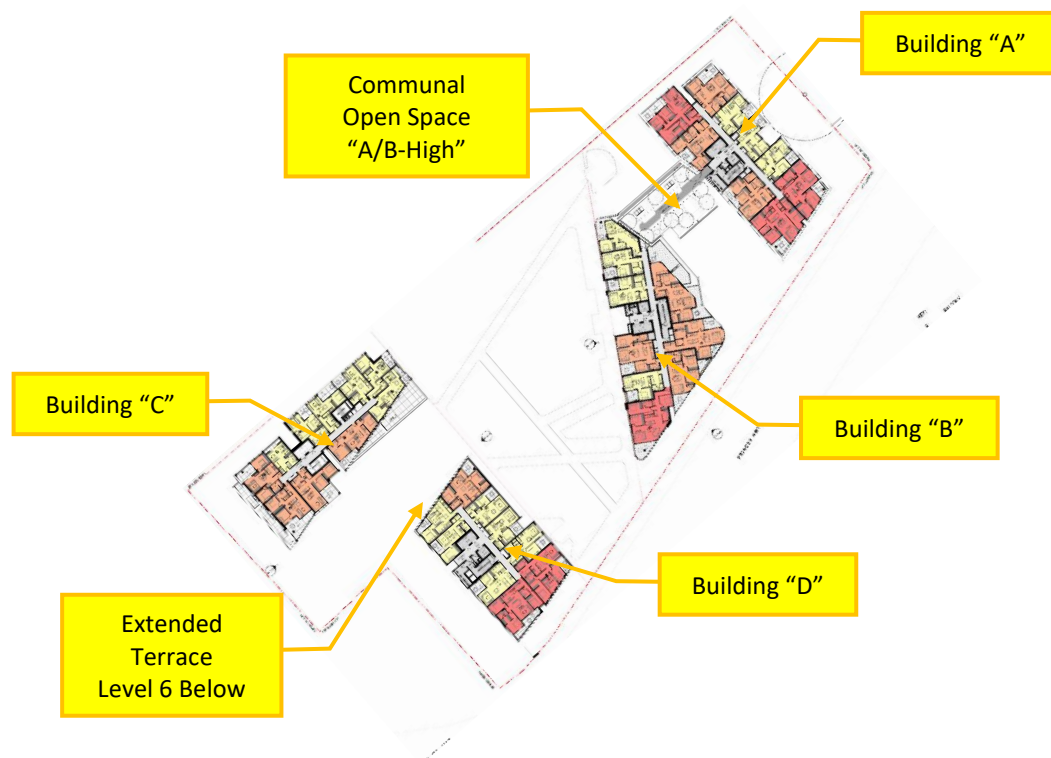
Representative Floor Plans and Development Images are shown in **Figure 2**.

**Figure 2 Representative Plans of the Proposed Development**



( Fig.2 cont'd )

C. Level 7



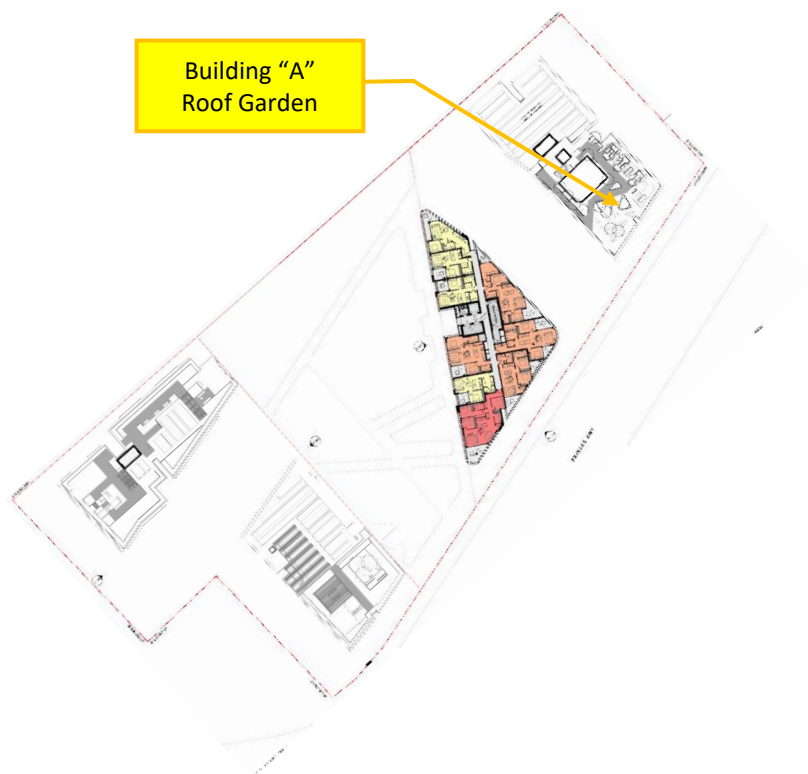
D. Level 19



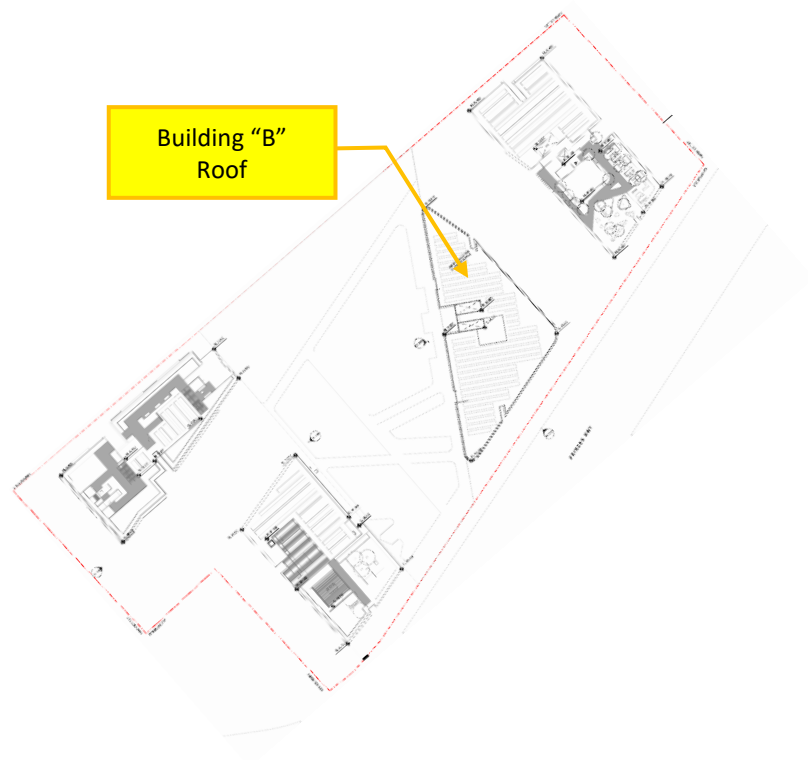


( Fig.2 cont'd )

E. Level 21



F. Level 22



## 2.3 Surrounding Built Environment

### “Near Field”

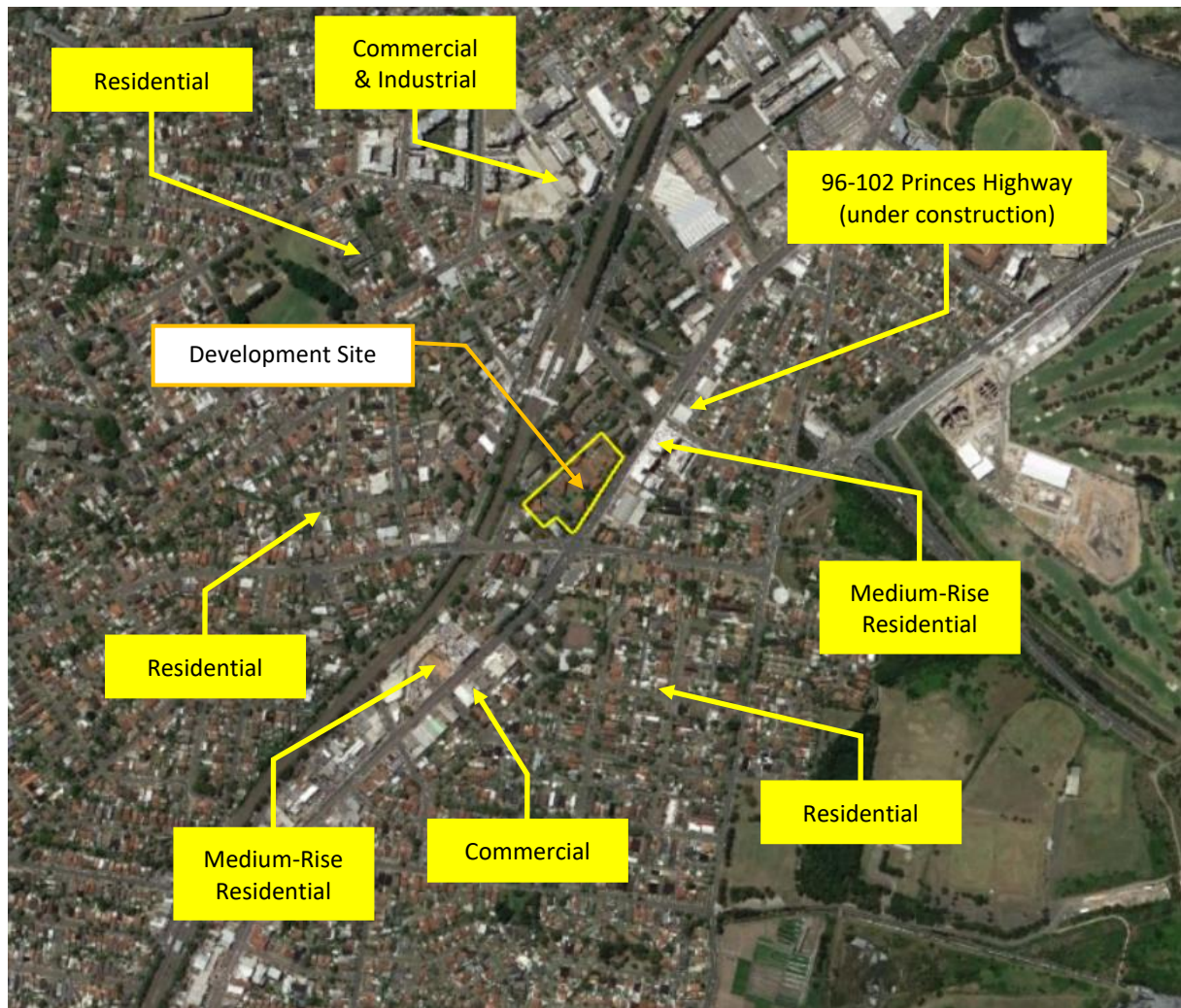
The “near-field” built environment comprises mainly low-rise residential, commercial and industrial in all directions, with the exception of several medium rise residential developments located along the Princes Highway to the east and northeast and the southwest – refer **Figure 3**. These buildings will exert a significant influence on winds arriving at the site, especially from the northeast.

### “Far Field”

The “far-field” built environment comprises the same mix of typically low-rise residential areas and commercial/industrial buildings, with scattered similar height residential buildings. To the east lies Kogarah Golf Club and the Sydney Kingsford Smith Airport Precinct.

The surrounding topography is generally flat with no significant features (hills, ridges, escarpments, etc) influencing local wind speeds.

**Figure 3** Nearby Similar Height Residential Buildings



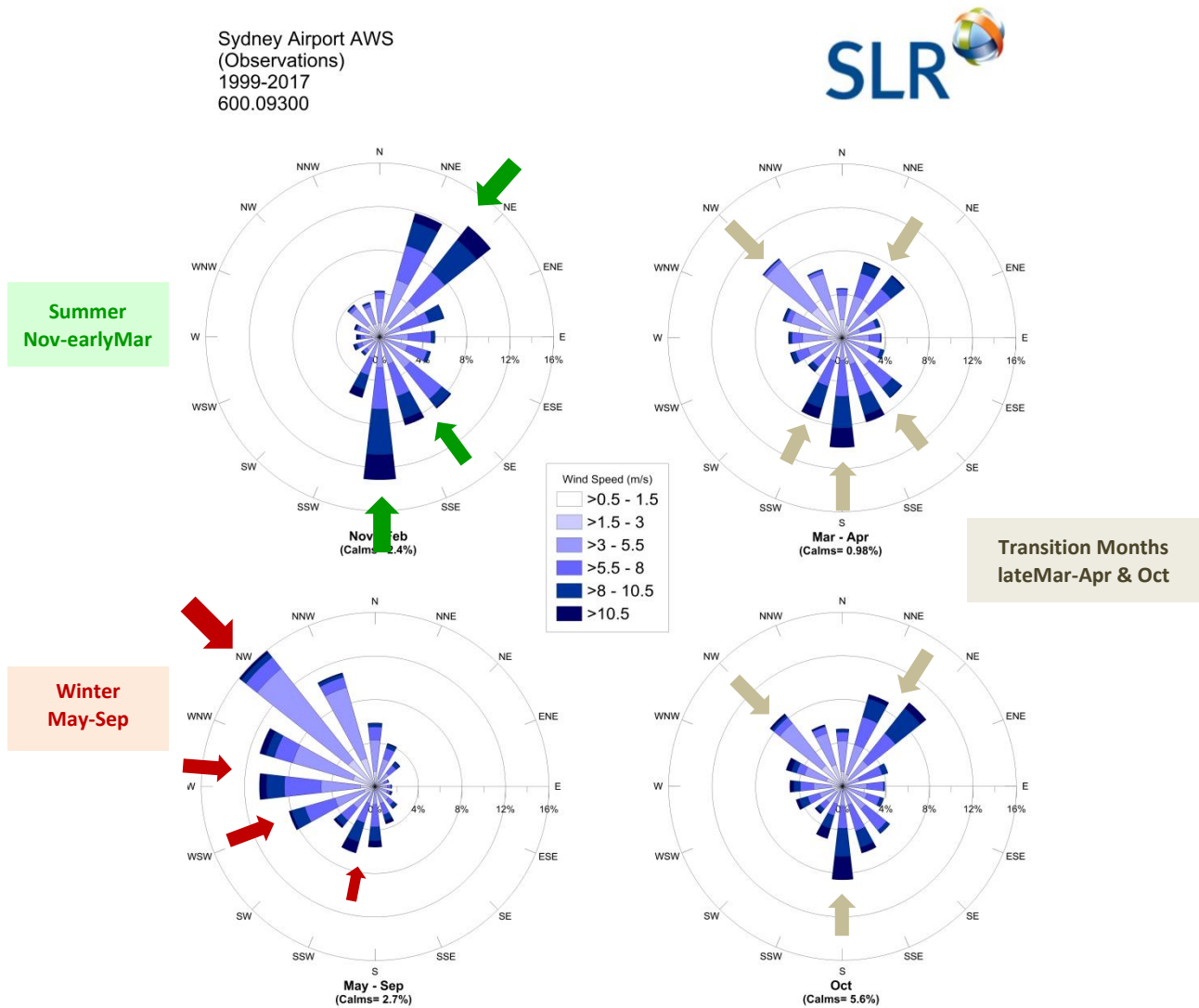
## 3 SYDNEY'S WIND CLIMATE

### 3.1 Seasonal Variations of Sydney's Regional Wind Climate

Key characteristics of Sydney's "regional" wind climate relevant to the development site are shown in the **Figure 4** seasonal wind roses, recorded at the nearby Bureau of Meteorology weather station at Sydney Kingsford Smith Airport. These indicate that Sydney is affected by two primary wind seasons, with brief transition periods in between:

- Summer/Early Autumn winds occur mainly from the northeast, southeast, and south. While northeast winds are the more common prevailing wind direction (occurring typically as offshore land-sea breezes), southeast and southerly winds generally provide the strongest gusts during summer.
- Winter/Early Spring winds occur mainly from the west-northwest: these provide the strongest winds during winter and in fact for the whole year. There is a smaller contribution from southerly winds.

**Figure 4 Sydney Airport (Bureau of Meteorology Station) Seasonal Wind Roses (1999-2017)**

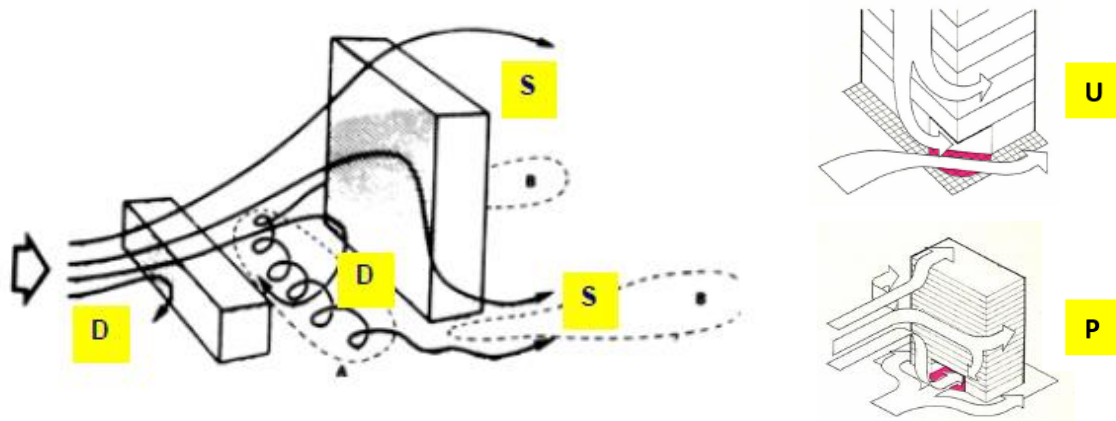


## 4 BUILDING-WIND INTERACTION – GENERAL OBSERVATIONS

The impact of wind flowing past buildings has well understood general impacts at ground level - refer **Figure 5**. In general, the taller the building, the more pronounced the impact on ground level winds.

- **Downwash winds "D"** are the winds which impact on the windward face of a building and are then deflected downwards to Ground Level in a vertical direction
- Accelerating **Shearflow winds "S"** are the winds which experience an acceleration as they pass by the building edges and roof as the wind flow moves around and past the building
- Concentrated adverse windflow can also be created when winds are accelerated by the negative pressure area at an undercroft ("**U**") or through passages ("**P**") at the base of buildings.

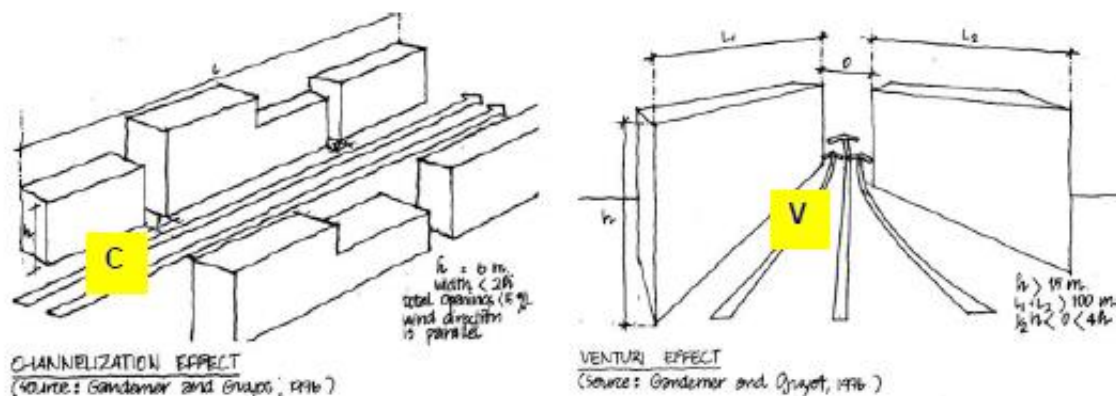
**Figure 5 Wind Flow Patterns Past Regular Shaped Buildings**



The grouping of buildings can also have an impact on surrounding pedestrian winds – refer **Figure 6**.

- **Channelling Effect winds "C"** result when there are rows of parallel buildings (especially taller ones) where the gaps in between the buildings line up with prevailing wind directions.
- **Venturi Effect winds "V"** result when wind flow is forced to pass between two converging buildings or groups of buildings with a resulting increase in flow.

**Figure 6 Wind Flow Patterns Past Groups of Buildings**





## 5 WIND ACCEPTABILITY CRITERIA

### 5.1 Standard Local Government Criteria

The choice of suitable criteria for evaluating the acceptability of particular ground level conditions has been the subject of international research over the past few decades. One of the commonly accepted set of acceptability criteria developed from this research, currently referenced by many Australian Local Government Development Control Plans, is summarised in **Table 1**. The limiting wind speed criteria in **Table 1** are based on the maximum wind gust occurring (on average) once per year.

**Table 1 Standard Local Government Wind Acceptability Criteria**

Type of Criteria	Limiting Gust Wind Speed Occurring Once Per Year	Activity Concerned
Safety	24 m/s	Knockdown in Isolated Areas
	23 m/s	Knockdown in Public Access Areas
Comfort	16 m/s	Comfortable Walking
	13 m/s	Standing, Waiting, Window Shopping
	10 m/s	Dining in Outdoor Restaurant

The primary objectives relating to the above wind impact criteria are as follows:

- The general objective is for annual 3-second gust wind speeds to remain at or below the so-called 16 m/s “Walking Comfort” criterion. Whilst this magnitude may appear somewhat arbitrary, its value represents a level of wind intensity above which the majority of the population would find unacceptable for comfortable walking on a regular basis at any particular location.
- In many urban locations, either because of exposure to open water conditions or because of street “canyon” effects, etc, the 16 m/s “Walking Comfort” level may already be currently exceeded. In such instances a new development should ideally not exacerbate existing adverse wind conditions and, wherever feasible and reasonable, ameliorate such conditions.
- It can be seen in **Table 1** that the recommended limiting wind speeds for spaces designed for activities such as seating, outdoor dining, etc., are lower (ie more stringent) than for “walking comfort”.

### 5.2 Application of Wind Criteria

The criteria provided in **Table 1** (especially in relation to Comfort) should not be viewed as “hard” numbers as the limiting values were generally derived from subjective assessments of wind acceptability. Such assessments have been found to vary considerably with the height, strength, age, etc., of the pedestrian concerned. A further factor for consideration is the extent of windy conditions, and some relaxation of the above criteria may be acceptable for small areas under investigation provided the general site satisfies the relevant criteria.



## 6 WIND IMPACTS OF THE PROPOSED REDEVELOPMENT

### 6.1 Areas of Interest in Relation to Wind Impact

Areas of interest in relation to the expected wind impact of the proposed Development on surrounding footpaths, primary building entry points, communal open spaces, balconies, etc, are identified in **Figure 2**.

- The Eden Street and Princes Highway footpaths refer **Figure 2-A**
- The Public Park spanning between Eden Street and Princes Highway refer **Figure 2-A**
- The “Meeting Place”, at the northeast end of the Public Park refer **Figure 2-A**
- The “Retail Entries”, at the northeast of the site refer **Figure 2-A**
- The “Through-Site Link”, at the northeast end of the site refer **Figure 2-A**
- The various Building Lobby Entries refer **Figure 2-A**
- The Outdoor Child Care Play Area refer **Figure 2-A**
- The “A/B-Low” Communal Open Space on Level 1 refer **Figure 2-B**
- The “C/D” Communal Open Space on Level 2 refer **Figure 2-B**
- The Level 6 Building “D” Extended Terrace refer **Figure 2-C**
- The “A/B-High” Communal Open Space on Level 7 refer **Figure 2-C**
- The Level 18 Building “C” Roof Garden refer **Figure 2-D**
- The Level 19 Building “D” Roof Garden refer **Figure 2-D**
- The Level 21 Building “A” Roof Garden refer **Figure 2-E**
- The Level 22 Building “B” Roof Garden refer **Figure 2-D**

### 6.2 Future Wind Impact at All Areas of Interest

The wind impact of the proposed Development is described by examining the impact of key prevailing wind conditions on areas of interest within and external to the development. The key directions analysed are:

- NE and S/SE winds for spring-summer-autumn months and
- W winds (ranging from SW to NW) for winter months.

The predicted wind environment at the site is examined in terms of both:

- Existing Winds, and
- Future Winds with the addition of the proposed development.

The above predictions are made on the basis of our best engineering judgement and (decades of) experience in carrying out Environmental Wind Tunnel Testing and CFD Simulation Studies.

The above predictions are made without necessarily assuming any benefit from the already planned landscaping for the proposed development.

**Prevailing Wind Direction:**  
**NORTHEAST Winds**

**Period of Annual Cycle:**  
**Summer ( October to March )**

Location	Existing Compliance	Future Compliance	Key Factors
Eden Street Footpath	Likely comply	Moderate Increase Likely comply	NE winds are generally mild. The proposed development's Eden Street façades are set back from the footpath and existing trees will either be retained or replaced.
Princes Highway Footpath	Likely comply	Likely comply	NE winds are generally mild, although the wider expanse of the Princes Highway allows for more wind channelling of NE winds. The proposed development's Princes Highway façades are set back from the footpath and existing trees will either be retained or replaced.
Public Park	Locations not relevant to "existing" built environment	Likely comply	Sheltering from the proposed development's Buildings "A" and "B" will limit northeast winds throughout the Public Park area.
Meeting Place		Likely comply	Sheltering from the proposed development's Building "A" and upstream trees along Eden Street will limit northeast winds within the Meeting Place area.
Retail Entries		Likely comply	Sheltering from the proposed development's Building "A" and upstream trees along Eden Street will limit northeast winds around the entries. Setbacks from levels above will provide shielding from downwash winds.
Through-Site Link		Likely comply	Sheltering from the adjoining residential properties to the northeast as well as the existing trees along the northeast boundary line will limit northeast winds along the Through-Site Link.
Outdoor Child Care Area		May just comply	Although NE winds are generally mild and shielding will be afforded to the Outdoor Area via Building A and B, there will be infrequent occasions where higher NE winds are directed downwards off Building "C"'s northeast facing corner and through the undercroft Outdoor Child Care area.
Building "A" Lobby Entry		May just comply	Although NE winds are generally mild, there will be infrequent occasions where infrequent higher NE winds are directed downwards off Building "A"'s Princes Highway façade onto the undercroft area in front of the Building "A" Lobby
Building "B" Lobby Entry		Likely comply	Sheltering from the proposed development's Building "B" will limit northeast winds at this Lobby entry.
Building "C" Lobby Entry		Likely comply	Sheltering from the proposed development's Building "C" will limit northeast winds at this Lobby entry.
Building "D" Lobby Entry		Likely comply	Sheltering from the proposed development's Building "D" will limit northeast winds at this Lobby entry.
Communal Open Space "A/B-Low"		Likely comply	Sheltering from the proposed development's Building "A" will limit winds throughout this public access area.
Communal Open Space "C/D"		Likely comply	Sheltering from the proposed development's Buildings "A" and "B" will limit winds throughout this public access area.
Communal Open Space "A/B-High"		Likely comply	Sheltering from the proposed development's Building "A" will limit winds throughout this public access area.

Location	Existing Compliance	Future Compliance	Key Factors
Level 18 Building "C" Roof Garden		<b>May not comply without appropriate mitigation</b>	Although NE winds are generally mild, there will be infrequent occasions where higher NE winds accelerate over the top of Building "C" creating adverse winds for stationary type activities (eg long-exposure sitting, dining, etc)
Level 19 Building "D" Roof Garden		<b>May not comply without appropriate mitigation</b>	Although NE winds are generally mild, there will be infrequent occasions where higher NE winds accelerate over the top of Building "D" (also after accelerating around the southern façade of Building "B") creating adverse winds for stationary type activities (eg long-exposure sitting, dining, etc)
Level 21 Building "A" Roof Garden		<b>May not comply without appropriate mitigation</b>	Although NE winds are generally mild, there will be infrequent occasions where higher NE winds accelerate over the top of Building "A" creating adverse winds for stationary type activities (eg long-exposure sitting, dining, etc)

**Prevailing Wind Direction:**  
**SOUTH & SOUTHEAST Winds**

**Period of Annual Cycle:**  
**All-Year-Round (South) Summer (Southeast)**

Location	Existing Compliance	Future Compliance	Key Factors
Eden Street Footpath	<b>Likely comply</b>	<b>Moderate Increase Likely comply</b>	Eden Street footpath areas shielded by the proposed development will be mild. Areas adjacent to the proposed Public Park may increase but still able to comply if existing trees are either retained or replaced.
Princes Highway Footpath	<b>May not comply</b>	<b>Moderate Increase Same level of compliance</b>	The wider expanse of the Princes Highway allows for more wind channelling of S and SE winds in the existing built environment. The proposed development's Princes Highway façades are set back from the footpath, thereby limiting downwash effects along the footpath; also the existing trees will either be retained or replaced.
Public Park		<b>May not comply without appropriate mitigation</b>	This area will have a direct exposure to S/SE winds with sheltering only from Princes Highway footpath trees. Areas within the Public Park closer to Eden Street will also experience the downwash effect of windflow accelerating around the western façade of Building "B" and eastern façade of Building "D".
Meeting Place	Locations not relevant to "existing" built environment	<b>Likely comply</b>	Sheltering from the proposed development's Building "B" and any landscaping within the Public Park will limit S/SE winds within the Meeting Place area.
Retail Entries		<b>Likely comply</b>	Sheltering from the proposed development's Building "B" and any landscaping within the Public Park will limit S/SE winds within the Meeting Place area.
Through-Site Link		<b>May not comply without appropriate mitigation</b>	This area will have a direct exposure to S/SE winds with sheltering only from any Princes Highway landscaping immediately adjacent to the Link. Areas along the Link will also experience the downwash effect of windflow accelerating around the eastern façade of Building "B".
Outdoor Child Care Area		<b>Likely comply</b>	This area will experience shielding from the lower levels of Building "C" and "D". The space should be protected from adverse winds via this shielding.

Location	Existing Compliance	Future Compliance	Key Factors
Building "A" Lobby Entry		<b>May not comply without appropriate mitigation</b>	S/SE winds will be directed downwards off Building "A"'s Princes Highway façade onto the undercroft area in front of the Building "A" Lobby
Building "B" Lobby Entry		<b>May not comply without appropriate mitigation</b>	S winds will be accelerated along Building "B"'s western façade impacting the area in front of this Lobby entry.
Building "C" Lobby Entry		<b>May not comply without appropriate mitigation</b>	SE winds will be accelerated along Building "D"'s eastern façade impacting the area in front of this Lobby entry.
Building "D" Lobby Entry		<b>Likely comply</b>	Sheltering from the proposed development's Building "C" will limit winds in this area. Set back from the levels above will limit exposure to downwash winds.
Communal Open Space "A/B-Low"		<b>May not comply without appropriate mitigation</b>	S/SE winds will be directed downwards as downwash off the proposed development's Building "A" and Building "B" internal south facing facades.
Communal Open Space "C/D"		<b>Some areas comply Others are may not comply without appropriate mitigation</b>	Areas in between Buildings "C" and "D" will be shielded from S/SE winds. Areas along the western side of Building "D" will experience accelerated flow around this building's western façade.
Communal Open Space "A/B-High"		<b>May not comply without appropriate mitigation</b>	S/SE winds will channel in between Buildings "A" and "B" creating accelerated flow over this area.
Level 18 Building "C" Roof Garden		<b>May not comply without appropriate mitigation</b>	S/SE winds will accelerate over the top of Building "C" creating adverse winds for stationary type activities (eg long-exposure sitting, dining, etc) especially in areas close to the southern perimeter of the roof garden.
Level 19 Building "D" Roof Garden		<b>May not comply without appropriate mitigation</b>	S/SE winds will accelerate over the top of Building "D" creating adverse winds for stationary type activities (eg long-exposure sitting, dining, etc) especially in areas close to the southern perimeter of the roof garden.
Level 21 Building "A" Roof Garden		<b>May not comply without appropriate mitigation</b>	S/SE winds will accelerate over the top of Building "A" creating adverse winds for stationary type activities (eg long-exposure sitting, dining, etc) especially in areas close to the southern perimeter of the roof garden.

**Prevailing Wind Direction:**  
**WESTERLY Winds (SW-NW)**

**Period of Annual Cycle:**  
**Winter ( May to October )**

Location	Existing Compliance	Future Compliance	Key Factors
Eden Street Footpath	<b>May not comply</b>	<b>Moderate Increase Same level of compliance</b>	Higher westerly winds, especially from the southwest, can channel along Eden Street and may not comply in the existing built environment. The proposed development's Eden Street façades are set back from the footpath, thereby limiting downwash effects along the footpath; also the existing trees will either be retained or replaced.

Location	Existing Compliance	Future Compliance	Key Factors
Princes Highway Footpath	<b>May not comply</b>	<b>Moderate Increase</b> <b>Same level of compliance</b>	Higher westerly winds, especially from the south-southwest, can channel along Princes Highway and may not comply in the existing built environment. The proposed development's Princes Highway façades are set back from the footpath, thereby limiting downwash effects along the footpath; also the existing trees will either be retained or replaced.
Public Park	Locations not relevant to "existing" built environment	<b>May not comply without appropriate mitigation</b>	Areas in the north half of the Park will have a direct exposure to winds from the northwest with sheltering only from Eden Street footpath trees. Areas in the eastern half of the Park will also experience the downwash effect of windflow accelerating around the northern façade of Building "C".
Meeting Place		<b>May not comply without appropriate mitigation</b>	This area will have a direct exposure to winds from the northwest with sheltering only from Eden Street footpath trees. This area will also experience the downwash effect of windflow accelerating around the northern façade of Building "C".
Retail Entries		<b>May not comply without appropriate mitigation</b>	This area will have a direct exposure to winds from the northwest with sheltering only from Eden Street footpath trees. This area will also experience the downwash effect of windflow accelerating around the northern façade of Building "C".
Through-Site Link		<b>Likely comply</b>	Sheltering from the proposed development's Building "A" will limit winds in this area.
Outdoor Child Care Area		<b>May not comply without appropriate mitigation</b>	The northern part of this area will have a direct exposure to winds from the west as winds accelerate around the northeast corner of Building "C".
Building "A" Lobby Entry		<b>Likely comply</b>	Sheltering from the proposed development's Buildings "A" and "B" will limit winds in this area.
Building "B" Lobby Entry		<b>May not comply without appropriate mitigation</b>	The area in front of the Lobby entry will have a direct exposure to winds from the northwest and will also experience the downwash effect of windflow accelerating around the northern façade of Building "C".
Building "C" Lobby Entry		<b>May not comply without appropriate mitigation</b>	The area in front of the Lobby entry will have a direct exposure to winds from the northwest and will also experience the downwash effect of windflow accelerating around the northern façade of Building "C".
Building "D" Lobby Entry		<b>Likely comply</b>	Sheltering from the proposed development's Building "D" will limit winds in this area.
Communal Open Space "A/B-Low"		<b>Likely comply</b>	Sheltering from the proposed development's Building "B" will limit winds in this area.
Communal Open Space "C/D"		<b>May not comply without appropriate mitigation</b>	Areas in between Buildings "C" and "D" will experience channelling flow between the two buildings. Areas on the western side of Building "D" will experience downwash off this building.
Communal Open Space "A/B-High"		<b>May not comply without appropriate mitigation</b>	Northwest winds will channel in between Buildings "A" and "B" creating accelerated flow over this area close to its northern perimeter.
Level 18 Building "C" Roof Garden		<b>May not comply without appropriate mitigation</b>	Westerly winds will accelerate over the top of Building "C" creating adverse winds for stationary type activities (eg long-exposure sitting, dining, etc) especially in areas close to the western perimeter of the roof garden.



Location	Existing Compliance	Future Compliance	Key Factors
Level 19 Building "D" Roof Garden		<b>May not comply without appropriate mitigation</b>	Westerly winds will accelerate over the top of Building "D" creating adverse winds for stationary type activities (eg long-exposure sitting, dining, etc) especially in areas close to the western perimeter of the roof garden.
Level 21 Building "A" Roof Garden		<b>May not comply without appropriate mitigation</b>	Westerly winds will accelerate over the top of Building "A" creating adverse winds for stationary type activities (eg long-exposure sitting, dining, etc) especially in areas close to the western perimeter of the roof garden.

## 7 WIND MITIGATION RECOMMENDATIONS

**Section 6** provided guidance as to the areas where the adopted wind acceptability criteria had the potential to be exceeded and an indication as to the likely local optimum wind treatment strategy, eg whether the wind condition of interest is likely to arise from accelerating winds which require vertical windbreaks (such as landscaping) or downwash winds which require horizontal windbreaks (such as awnings, canopies).

The wind conditions of potential concern in relation to the proposed development include:

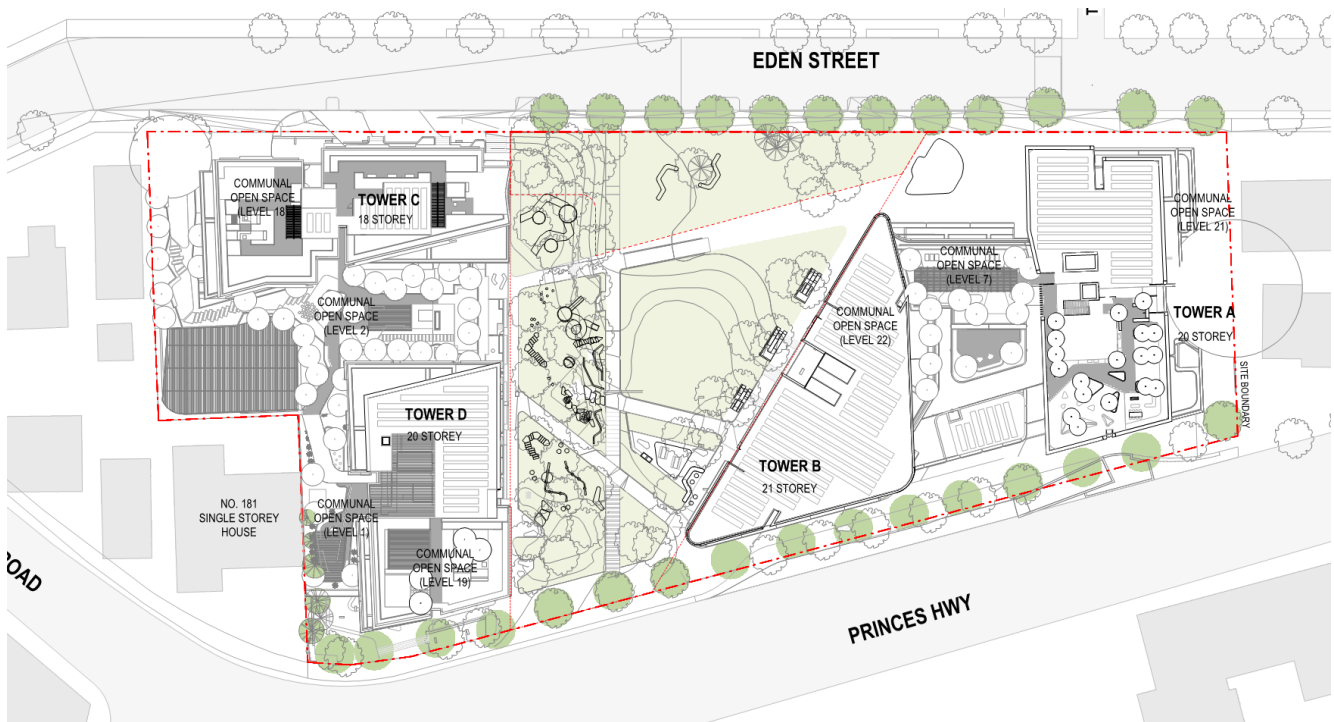
- Public Park and Meeting Place;
- Retail Entries;
- Main Lobby Entries;
- The Outdoor Child Care Play Area;
- All elevated Communal Spaces; and
- All Roof Gardens

### 7.1 Already Planned Wind Mitigation

The following features, already planned for the development, will have an ameliorating impact on local wind conditions:

- Extensive landscaping along Eden Street, Princes Highway, the Public Park and Through-Site Link - refer **Figure 7**, as well as throughout the four high-rise building Roof Gardens.
- Note that some of the footpath landscaping involves retention of existing trees, etc.

**Figure 7 Planned Landscaping at Lower and Upper Ground Levels and Roof Gardens**



## 7.2 Additional Wind Mitigation Recommendations

On the basis of the expected wind impacts outlined in **Section 6**, the following recommendations for wind amelioration features are made in areas where winds have the potential, without suitable wind mitigation, to approach or exceed the relevant 10 m/s, 13 m/s or 16 m/s criterion depending on the designated use for that area.

The recommendations shown in **Figure 8** are designed to mitigate adverse wind conditions.

### Eden Street and Princes Highway Footpaths

- Retain or replace the existing trees along both footpaths, especially adjacent to the Public Park areas.

### Public Park

- Retain or replace the existing trees along the Duncan Street footpath close to the intersection with Kyle Street and add additional landscaping and/or pergolas, shade cloths, etc, at any seated/dining areas.

### Outdoor Child Care Play Area

- Retain or replace all existing trees along Eden Street immediately adjacent to the Outdoor Child Care Play Area;
- Add horizontal wind mitigation (awnings, pergolas, shade cloths, etc) above exposed areas relative to the Building "C" outline above; and
- Add full height, vertical wind mitigation (wall, louvres of maximum porosity 25%, etc) along the northern perimeter to shelter against westerly winds.

### Main Building Entries

- Provide a solid horizontal windbreak (canopy, awning, etc) protecting the main entry areas into Buildings "A", "B" and "C", protecting these areas from the downwash created by south, southeast and westerly winds.

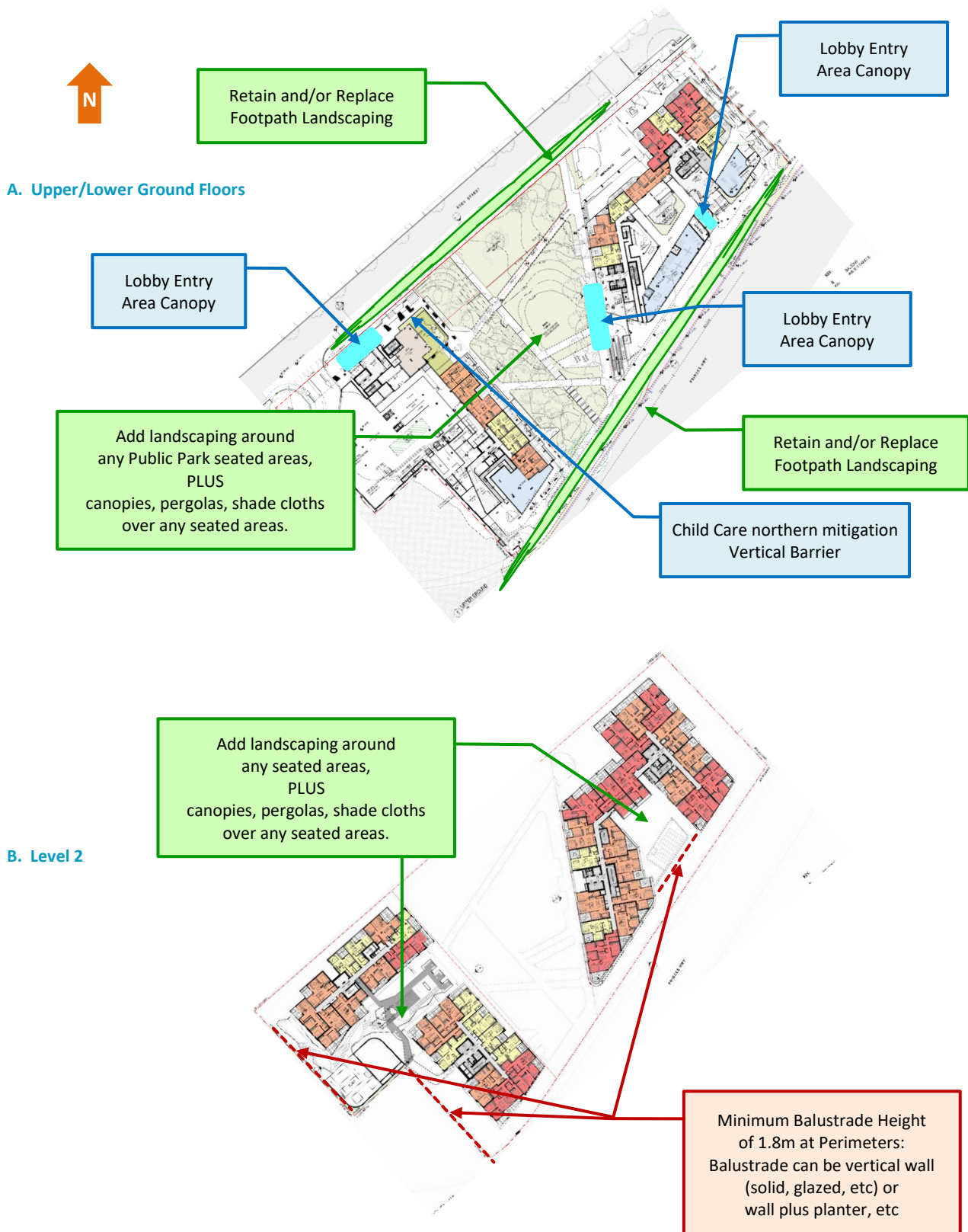
### Elevated Communal Spaces

- Provide minimum 1.8 m height balustrade along the communal space perimeters indicated in Figure 8 along with horizontal shading near building facades and landscaping close to any planned seating areas.

### Roof Gardens

- Provide minimum 1.8 m height balustrade or equivalent (eg wall plus planter of same height) along the roof garden perimeters facing south, southeast and west along with landscaping close to any planned seating areas.

**Figure 8 Wind Mitigation Recommendations**



( Fig.8 cont'd )

C. Level 7



D. Level 19





( Fig.8 cont'd )

E. Level 21



### 7.3 Upper Level Balconies

The proposed development's main residential blocks have balconies around all facades. It is almost certain that some of these balconies, especially those at upper levels and near building corners, will experience adverse wind conditions requiring wind treatment beyond standard height (ie code-compliant) balustrades. There may also be interaction between the development's buildings which results in increased balcony winds, eg westerly winds accelerating around the northern edge of Building "B" onto Building "A".

Balconies where such treatments may be considered are shown in **Figure 9**.

Treatments might include increased balustrade height or partial screening via moveable louvres, to take advantage of the beneficial impact of cooler, milder winds during summer, while providing the capacity to limit the impact of colder and potentially much stronger winds during winter. Where balconies have exposure to more than one aspect, partial balcony treatment on the most exposed façade would be a practical means of wind shielding, eg full height balustrade, louvres, pull-down screens, etc, on the most exposed aspect of the balcony. Balconies with predominantly west exposure could also consider winter gardens.

The following is therefore recommended:

- During the Detailed Design phase of the project, once the design of the various building facades is finalised, further modelling could be carried out to confirm zones of the building, by height and by plan view location (eg which building corners), where wind mitigation (ie beyond the standard balustrade height) may be beneficial IF it is intended for balconies and terraces to be used all-year-round, also noting that the strongest westerly winds occur during winter.
- The preference here would be for detailed 3D CFD Simulation Modelling rather than Wind Tunnel Testing, given the issue of balcony scaling at typical 1:400 wind tunnel test scales.

**Figure 9 Upper Level Balconies Potentially Exposed to Adverse Wind Conditions**



## 8 CONCLUSIONS

SLR Consulting Australia Pty Ltd (SLR) has been engaged by Arncliffe Eden Property Pty Ltd to assess the wind impact on the immediate surrounds of a proposed Mixed-Use Development (herein the Project) located at Eden Street and Princes Highway, Arncliffe – refer **Figure 1**.

The present study is a qualitative (expert opinion) study of potential wind impacts.

This initial assessment has been made on the basis of our best engineering judgment and on the experience gained from (decades of) scale-model Wind Tunnel Testing and CFD Simulation Modelling of a range of similar scale developments.

### Local Wind Climate

On the basis of long-term wind records obtained from the Bureau of Meteorology stations weather at Sydney Kingsford Smith Airport, SLR has determined that key prevailing wind directions of interest are the northeast and south/southeast for summer/early autumn and west quadrant winds for winter/early spring.

### Future Wind Environment

In terms of the *future* wind environment with the proposed Development, the following features are noted as being of most significance:

- The proposed Development's main residential blocks are set back from its two perimeter street frontages with extensive landscaping (large trees) planned along both Eden Street and Princes Highway.
- Areas potentially requiring wind mitigation are largely within the site, especially the elevated Communal Spaces and Roof Gardens.
- Windbreak recommendations, all of which will be implemented in the design of the development, have been made to assist in ameliorating potentially adverse winds identified in this study. Accordingly, all affected areas should be able to comply with the recommended wind acceptability criteria – refer **Section 7** and **Figures 8 and 9** for details.

## ASIA PACIFIC OFFICES

### BRISBANE

Level 2, 15 Astor Terrace  
Spring Hill QLD 4000  
Australia  
T: +61 7 3858 4800  
F: +61 7 3858 4801

### CANBERRA

GPO 410  
Canberra ACT 2600  
Australia  
T: +61 2 6287 0800  
F: +61 2 9427 8200

### DARWIN

Unit 5, 21 Parap Road  
Parap NT 0820  
Australia  
T: +61 8 8998 0100  
F: +61 8 9370 0101

### GOLD COAST

Level 2, 194 Varsity Parade  
Varsity Lakes QLD 4227  
Australia  
M: +61 438 763 516

### MACKAY

21 River Street  
Mackay QLD 4740  
Australia  
T: +61 7 3181 3300

### MELBOURNE

Level 11, 176 Wellington Parade  
East Melbourne VIC 3002  
Australia  
T: +61 3 9249 9400  
F: +61 3 9249 9499

### NEWCASTLE

10 Kings Road  
New Lambton NSW 2305  
Australia  
T: +61 2 4037 3200  
F: +61 2 4037 3201

### PERTH

Ground Floor, 503 Murray Street  
Perth WA 6000  
Australia  
T: +61 8 9422 5900  
F: +61 8 9422 5901

### SYDNEY

Tenancy 202 Submarine School  
Sub Base Platypus  
120 High Street  
North Sydney NSW 2060  
Australia  
T: +61 2 9427 8100  
F: +61 2 9427 8200

### TOWNSVILLE

12 Cannan Street  
South Townsville QLD 4810  
Australia  
T: +61 7 4722 8000  
F: +61 7 4722 8001

### WOLLONGONG

Level 1, The Central Building  
UoW Innovation Campus  
North Wollongong NSW 2500  
Australia  
T: +61 2 4249 1000

### AUCKLAND

68 Beach Road  
Auckland 1010  
New Zealand  
T: 0800 757 695

### NELSON

6/A Cambridge Street  
Richmond, Nelson 7020  
New Zealand  
T: +64 274 898 628