

EDEN STREET

PRINCES HIGHWAY

ROAD

Amendments		
Issue	Description	Date
-	ISSUED FOR PRE-DA	30/10/2020
1	ISSUED FOR GANSW 3	24/03/2021
2	ISSUED FOR INFORMATION	11/10/2021
3	ISSUED FOR INFORMATION	18/10/2021
4	ISSUED FOR INFORMATION	17/11/2021
5	REVISED SSDA	08/12/2021
6	ISSUED FOR INFORMATION	25/03/2022

Amendments		
Issue	Description	Date

Client  
Billbergia  
Client Details



**GROUP GSA**  
Group GSA Pty Ltd ABN 76 002 113 779  
Level 7, 80 William St East Sydney NSW  
Australia 2011  
www.groupgsa.com  
T +612 9361 4144 F +612 9332 3458  
architecture interior design urban design landscape  
nom architect M. Sheldon 3990

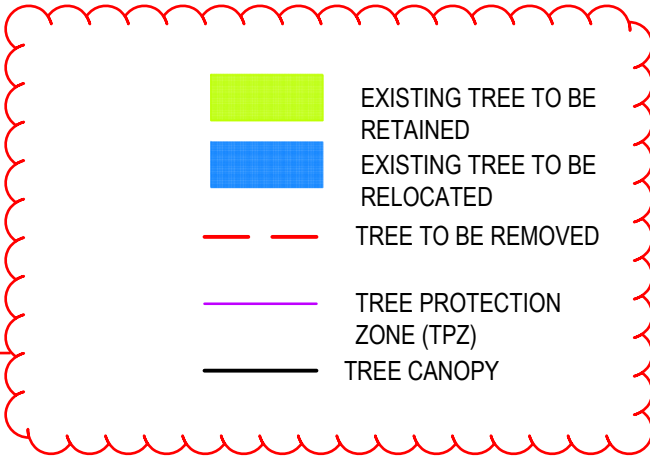
Project Title  
Eden Street Arncliffe

Drawing Title  
Landscape Plan  
Tree Removal Plan

This drawing is the copyright of Group GSA Pty Ltd and may not be altered, reproduced or transmitted in any form or by any means in part or in whole without the written permission of Group GSA Pty Ltd.  
All levels and dimensions are to be checked and verified on site prior to the commencement of any work, making of shop drawings or fabrication of components.  
Do not scale drawings. Use figured Dimensions.

Plotted and checked by		FZ	
Verified	FZ	Approved	SH
Drawing Created (28/10/2020)		Drawing Created (by)	BP
22/10/2020			
Scale	Project No	Drawing No	Issue
1 : 250	180913	DA 9100	6

PRELIMINARY



RFI RESPONSE:  
CLARIFICATION TO  
TREE RETAINED,  
REMOVED AND  
RELOCATED





TREE REMOVAL SCHEDULE FOR EDEN STREET - ARNCLIFFE						
<b>Note:</b>	The following list of trees to be retained, removed and relocated takes precedence over the trees identified in the Naturally Trees report dated 16.11.20.					
<b>**</b>	Refer to the tree assessment report undertaken by Naturally Trees 16.11.2020 for review of the tree quality and Protection Zones.					
<b>xx BTC</b>	Refer to the tree assessment report undertaken by Birds Tree Consultancy 22.12.2021 for review of the tree quality and Protection Zones. Note that this report was undertaken on specific trees to further assess the retention in the current DA					
CODE	BOTANICAL NAME	COMMON NAME	HEIGHT	SPREAD	STATUS	TREE ASSESSMENT
1	<i>Syncarpia glomulifera</i>	Turpentine	12m	6m	REMOVE	**
2	<i>Syncarpia glomulifera</i>	Turpentine	12m	6m	REMOVE	**
3	<i>Corymbia Citriodora</i>	Lemon-Scented Gum	18m	18m	RETAINED	xx BTC
4	<i>Corymbia Citriodora</i>	Lemon-Scented Gum	18m	18m	REMOVE	**
5	<i>Corymbia Citriodora</i>	Lemon-Scented Gum	12m	7m	REMOVE	**
6	<i>Tristaniaopsis Laurina</i>	Water Gum	3m	2m	REMOVE	**
7	<i>Tristaniaopsis Laurina</i>	Water Gum	3m	2m	REMOVE	**
8	<i>Radermachera Sinica</i>	Serpent Tree	5m	3m	REMOVE	**
9	<i>Cinnamomum Camphora</i>	Camphor Laurel	9m	10m	REMOVE	**
10	<i>Lophostemon Confertus</i>	Brush Box	14m	10m	REMOVE	**
11	<i>Toona Ciliata</i>	Red Cedar	14m	10m	REMOVE	**
12	<i>Cotoneaster sp.</i>	Cotoneaster	4m	4m	REMOVE	**
13	<i>Murraya Paniculata</i>	Murraya	3m	3m	REMOVE	**
14	<i>Melia Azedarach</i>	Chinaberry	5m	5m	REMOVE	**
15	<i>Cinnamomum Camphora</i>	Camphor Laurel	7m	7m	REMOVE	**
16	<i>Washingtonia Robusta</i>	Mexican Fan Palm	7m	3m	REMOVE	**
17	<i>Schefflera Actinophylla</i>	Umbrella Tree	9m	1m	REMOVE	**
18	<i>Radermachera Sinica</i>	Serpent Tree	3m	3m	REMOVE	**
19	<i>Washingtonia Robusta</i>	Mexican Fan Palm	7m	3m	RETAINED	**
20	<i>Toona Ciliata</i>	Red Cedar	9m	7m	RETAINED	**
21	<i>Murraya Paniculata</i>	Murraya	3m	4m	REMOVED	**
22	<i>Melia Azedarach</i>	Chinaberry	14m	10m	RETAINED	**
23	<i>Livistona Australis</i>	Cabbage Palm	7m	4m	RETAINED	**
24	<i>Howea Forsteriana</i>	Kentia Palm	9m	3m	RETAINED	**
25	<i>Melia Azedarach</i>	Chinaberry	5m	4m	RETAINED	**
26	<i>Hibiscus sp.</i>	Hibiscus	3m	3m	REMOVED	**
27	<i>Cinnamomum Camphora</i>	Camphor Laurel	9m	5m	REMOVED	**
28	<i>Toona Ciliata</i>	Red Cedar	8m	4m	REMOVED	**
29	<i>Prunus sp.</i>	Stone Fruit Tree	3m	3m	REMOVED	**
30	<i>Acer Negundo</i>	Boxelder Maple	8m	5m	REMOVED	**
31	<i>Cinnamomum Camphora</i>	Camphor Laurel	9m	5m	REMOVED	**
32	<i>Melia Azedarach</i>	Chinaberry	10m	12m	REMOVED	**
33	<i>Phoenix Canariensis</i>	Canary Island Date Palm	4m	3m	REMOVED	**
34	<i>Morus sp.</i>	Mulberry	6m	4m	REMOVED	**
35	<i>Lophostemon Confertus</i>	Brush Box	12m	9m	REMOVED	**
36	<i>Melia Azedarach</i>	Chinaberry	8m	9m	REMOVED	**
37	<i>Plumeria Rubra</i>	Frangipani	5m	5m	REMOVED	**
38	<i>Acer Negundo</i>	Boxelder Maple	8m	5m	REMOVED	**
39	<i>Acer Negundo</i>	Boxelder Maple	9m	8m	REMOVED	**
40	<i>Carica Papaya</i>	Papaya Tree	6m	3m	REMOVED	**
41	<i>Brachychiton Acerifolius</i>	Flame Bottle tree	10m	7m	REMOVED	**
42	<i>Plumeria Rubra</i>	Frangipani	5m	5m	REMOVED	**
43	<i>Glochidion Ferdinandii</i>	Cheese Tree	5m	5m	REMOVED	**
44	<i>Corymbia Citriodora</i>	Lemon-Scented Gum	18m	14m	RETAINED	xx BTC
45	<i>Corymbia Citriodora</i>	Lemon-Scented Gum	18m	14m	RETAINED	xx BTC
46	<i>Acer Negundo</i>	Boxelder Maple	8m	5m	REMOVED	**
47	<i>Populus Nigra Var. Italica</i>	Black Poplar	22m	10m	REMOVED	**
48	<i>Populus Nigra Var. Italica</i>	Black Poplar	22m	10m	REMOVED	**
49	<i>Populus Nigra Var. Italica</i>	Black Poplar	18m	7m	REMOVED	**
50	<i>Ligustrum sp.</i>	Privet	5m	4m	REMOVED	**
51	<i>Musa sp.</i>	Banana Tree	3m	3m	REMOVED	**
52	<i>Prunus sp.</i>	Stone Fruit Tree	3m	3m	REMOVED	**
53	<i>Populus Nigra Var. Italica</i>	Black Poplar	18m	7m	REMOVED	**
54	<i>Populus Nigra Var. Italica</i>	Black Poplar	18m	7m	REMOVED	**
55	<i>Viburnum tinus</i>	Laurustinus	5m	4m	REMOVED	**
56	<i>Schefflera Actinophylla</i>	Umbrella Tree	8m	4m	REMOVED	**
57	<i>Populus Nigra Var. Italica</i>	Black Poplar	22m	10m	REMOVED	**
58	<i>Cinnamomum camphora</i>	Camphor Laurel	9m	5m	REMOVED	**
59	<i>Ficus benjamina</i>	Weeping Fig	14m	10m	REMOVED	**
60	<i>Grevillea robusta</i>	Southern Silky Oak	14m	6m	RETAINED	**
61	<i>Acer Negundo</i>	Boxelder Maple	4m	2m	REMOVED	**
62	<i>Archotophoenix alexandrae</i>	Northern Bangalow Palm	12m	4m	REMOVED	**
63	<i>Cestrum nocturnum</i>	Night-Blooming Jasmine	3m	3m	REMOVED	**
64	<i>Cupressus sp.</i>	Mediterranean Cypress	7m	6m	REMOVED	**
65	<i>Schefflera Actinophylla</i>	Umbrella Tree	6m	3m	REMOVED	**
66	<i>Plumeria rubra</i>	Frangipani	3m	3m	REMOVED	**
67	<i>Acer negundo</i>	Black Poplar	4m	3m	REMOVED	**
68	<i>Grevillea robusta</i>	Southern Silky Oak	26m	20m	REMOVED	**
69	<i>Corymbia Citriodora</i>	Lemon-Scented Gum	26m	22m	REMOVED	**
70	<i>Cotoneaster sp.</i>	Cotoneaster	3m	3m	REMOVED	**

RFI RESPONSE:  
CLARIFICATION ON  
TREE ASSESSMENT

TREE REMOVAL SCHEDULE FOR EDEN STREET - ARNCLIFFE						
<b>Note:</b>	The following list of trees to be retained, removed and relocated takes precedence over the trees identified in the Naturally Trees report dated 16.11.20.					
<b>**</b>	Refer to the tree assessment report undertaken by Naturally Trees 16.11.2020 for review of the tree quality and Protection Zones.					
<b>xx BTC</b>	Refer to the tree assessment report undertaken by Birds Tree Consultancy 22.12.2021 for review of the tree quality and Protection Zones. Note that this report was undertaken on specific trees to further assess the retention in the current DA					
CODE	BOTANICAL NAME	COMMON NAME	HEIGHT	SPREAD	STATUS	TREE ASSESSMENT
71	<i>Corymbia Citriodora</i>	Lemon-Scented Gum	12m	6m	REMOVED	**
72	<i>Plumeria rubra</i>	Frangipani	5m	5m	REMOVED	**
73	<i>Plumeria rubra</i>	Frangipani	4m	3m	REMOVED	**
74	<i>Cotoneaster sp.</i>	Cotoneaster	3m	3m	REMOVED	**
75	<i>Citrus x limon</i>	Lemon Tree	3m	3m	REMOVED	**
76	<i>Archotophoenix alexandrae</i>	Northern Bangalow Palm	2m	1m	REMOVED	**
77	<i>Schefflera Actinophylla</i>	Umbrella Tree	3m	3m	REMOVED	**
78	<i>Populus Nigra Var. Italica</i>	Black Poplar	12m	5m	REMOVED	**
79	<i>Murraya Paniculata</i>	Murraya	3m	3m	REMOVED	**
80	<i>Corymbia Citriodora</i>	Lemon-Scented Gum	16m	12m	REMOVED	**
81	<i>Populus Nigra Var. Italica</i>	Black Poplar	12m	5m	REMOVED	**
82	<i>Toona Ciliata</i>	Red Cedar	5m	3m	REMOVED	**
83	<i>Toona Ciliata</i>	Red Cedar	2m	1m	REMOVED	**
84	<i>Melia Azedarach</i>	Chinaberry	8m	6m	REMOVED	**
85	<i>Syncarpia glomulifera</i>	Turpentine	5m	3m	REMOVED	**
86	<i>Syncarpia glomulifera</i>	Turpentine	5m	3m	REMOVED	**
87	<i>Cinnamomum camphora</i>	Camphor Laurel	14m	10m	REMOVED	**
88	<i>Toona cilata</i>	Red Cedar	8m	5m	REMOVED	**
89	<i>Syncarpia glomulifera</i>	Turpentine	9m	5m	REMOVED	**
90	<i>Araucaria cunninghamii</i>	Hoop Pine	8m	3m	RELOCATE	**
91	<i>Bauhinia sp.</i>	Orchid Tree	5m	3m	REMOVED	**
92	<i>Bauhinia sp.</i>	Orchid Tree	5m	3m	REMOVED	**
93	<i>Celtis sinensis</i>	Hackberry	5m	3m	REMOVED	**
94	<i>Celtis sinensis</i>	Hackberry	5m	3m	REMOVED	**
95	<i>Corymbia Citriodora</i>	Lemon-Scented Gum	18m	16m	REMOVED	**
96	<i>Toona ciliata</i>	Red Cedar	10m	6m	REMOVED	**
97	<i>Bauhinia sp.</i>	Orchid Tree	7m	3m	REMOVED	**
98	<i>Toona ciliata</i>	Red Cedar	10m	6m	REMOVED	**
99	<i>Podocarpus elatus</i>	Illawarra Plum	20m	10m	REMOVED	**
100	<i>Podocarpus elatus</i>	Illawarra Plum	20m	10m	REMOVED	**
101	<i>Podocarpus elatus</i>	Illawarra Plum	7m	4m	REMOVED	**
102	<i>Carica Papaya</i>	Papaya Tree	4m	3m	REMOVED	**
103	<i>Carica Papaya</i>	Papaya Tree	4m	3m	REMOVED	**
104	<i>Toona ciliata</i>	Red Cedar	5m	3m	REMOVED	**
105	<i>Corymbia Citriodora</i>	Lemon-Scented Gum	20m	14m	REMOVED	**
106	<i>Hibiscus sp.</i>	Hibiscus	3m	3m	REMOVED	**
107	<i>Melaleuca quinquenervia</i>	Broad-leaved Paperbark	7m	3m	Tree outside the site	**
108	<i>Yucca sp.</i>	Yucca	4m	2m	REMOVED	**
109	<i>Eucalyptus pilularis</i>	Blackbutt	28m	28m	RETAINED	xx BTC
110	<i>Lillex aquifolium</i>	Common Holly	3m	3m	REMOVED	**
111	<i>Lophostemon confertus</i>	Brush Box	16m	16m	RETAINED	xx BTC
112	<i>Jacaranda mimosifolia</i>	Jacaranda	8m	8m	Tree outside the site	**
113	<i>Brachychiton acerifolius</i>	Flame Bottle tree	6m	3m	Tree outside the site	**
114	<i>Grevillea sp.</i>	Grevillea	3m	3m	Tree outside the site	**
115	<i>Grevillea sp.</i>	Grevillea	3m	3m	Tree outside the site	**
116	<i>Robinia pseudoacacia</i>	Black Locust	16m	14m	Tree outside the site	**
117	<i>Lophostemon confertus</i>	Brush Box	12m	12m	Tree outside the site	**
118	<i>Jacaranda mimosifolia</i>	Jacaranda	9m	10m	Tree outside the site	**
119	<i>Callistemon sp.</i>	Callistemon	8m	5m	Tree outside the site	**
120	<i>Callistemon sp.</i>	Callistemon	8m	5m	Tree outside the site	**
121	<i>Callistemon sp.</i>	Callistemon	8m	5m	Tree outside the site	**
122	<i>Callistemon sp.</i>	Callistemon	8m	5m	Tree outside the site	**
123	<i>Callistemon sp.</i>	Callistemon	8m	5m	Tree outside the site	**
124	<i>Callistemon sp.</i>	Callistemon	8m	5m	Tree outside the site	**
125	<i>Callistemon sp.</i>	Callistemon	8m	5m	Tree outside the site	**
126	<i>Plumeria Rubra</i>	Frangipani	5m	5m	REMOVED	**
127	<i>Plumeria Rubra</i>	Frangipani	5m	5m	REMOVED	**
128	<i>Livistona australis</i>	Cabbage Palm	6m	3m	RELOCATE	**
129	<i>Toona ciliata</i>	Red Cedar	14m	7m	REMOVED	**
130	<i>Syncarpia glomulifera</i>	Turpentine	16m	9m	REMOVED	**
131	<i>Syncarpia glomulifera</i>	Turpentine	16m	9m	REMOVED	**
132	<i>Plumeria rubra</i>	Frangipani	4m	3m	REMOVED	**
133	<i>Cupressus sp.</i>	Mediterranean Cypress	8m	3m	REMOVED	**
134	<i>Livistona australis</i>	Cabbage Palm	9m	3m	RELOCATE	**
135	<i>Lagerstroemia indica</i>	Crepe-myrtle	5m	3m	REMOVED	**
136	<i>Lagerstroemia indica</i>	Crepe-myrtle	5m	3m	RETAINED	**
137	<i>Grevillea robusta</i>	Grevillea	12m	6m	RETAINED	**
138	<i>Melaleuca quinquenervia</i>	Broad-leaved Paperbark	12m	10m	Tree outside the site	**
139	<i>Lophostemon confertus</i>	Brush Box	10m	9m	Tree outside the site	**
140	<i>Lophostemon confertus</i>	Brush Box	14m	10m	Tree outside the site	**

RFI RESPONSE:  
CLARIFICATION ON  
TREE ASSESSMENT

Amendments			Amendments		
Issue	Description	Date	Issue	Description	Date
-	ISSUED FOR PRE-DA				
1	ISSUED FOR GANSW 3	24/03/2021			
2	REVISED SSDA	08/12/2021			
3	ISSUED FOR INFORMATION	25/03/2022			

Client  
Billbergia  
Client Details



Group GSA Pty Ltd ABN 76 002 113 779  
Level 7, 50 William St East Sydney NSW  
Australia 2011  
www.groupgsa.com

T +612 9361 4144 F +612 9332 3458

architecture interior design urban design landscape  
nom architect M. Sheldon 3990

Project Title

Eden Street Arncliffe

Drawing Title

Landscape Plan  
Tree Removal Schedule

This drawing is the copyright of Group GSA Pty Ltd and may not be altered, reproduced or transmitted in any form or by any means in part or in whole without the written permission of Group GSA Pty Ltd.  
All levels and dimensions are to be checked and verified on site prior to the commencement of any work, making of shop drawings or fabrication of components.  
Do not scale drawings. Use figured Dimensions.

Plotted and checked by FZ

Verified FZ	Approved SH
Drawing Created (28/10/2020)	Drawing Created (by) BP

22/10/2020

Scale	Project No	Drawing No	Issue
-------	------------	------------	-------

1 : 250

180913

DA 9101

3







Amendments			Amendments		
Issue	Description	Date	Issue	Description	Date
1	ISSUED FOR PRE-DA	30/10/2020			
2	ISSUED FOR INFORMATION	25/02/2021			
3	ISSUED FOR GANSW 3	24/03/2021			
4	ISSUED FOR CONSULTANTS	20/04/2021			
5	ISSUED FOR CONSULTANTS	10/05/2021			
6	ISSUED REVISED DA	25/06/2021			
7	REVISED SSDA	08/12/2021			
8	ISSUED FOR INFORMATION	25/03/2022			

Client  
Billbergia  
Client Details



Group GSA Pty Ltd ABN 76 002 113 779  
Level 7, 80 William St East Sydney NSW  
Australia 2011  
www.groupgsa.com

T +612 9361 4144 F +612 9332 3458

architecture interior design urban design landscape  
nom architect M. Sheldon 3990

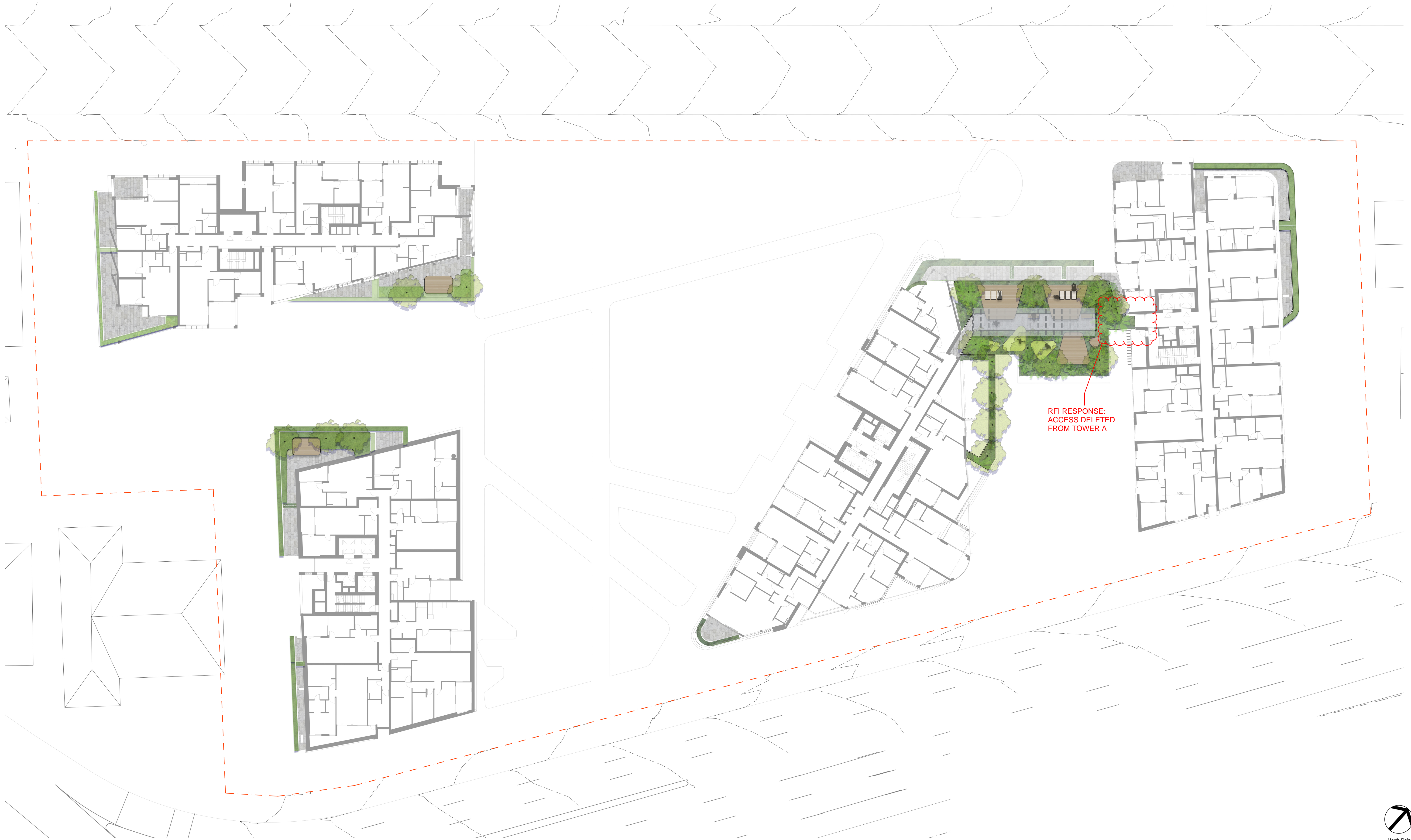
Project Title  
Eden Street Arncliffe

Drawing Title  
Landscape General Arrangement Plan  
Level 7

This drawing is the copyright of Group GSA Pty Ltd and may not be altered, reproduced or transmitted in any form or by any means in part or in whole without the written permission of Group GSA Pty Ltd.  
All levels and dimensions are to be checked and verified on site prior to the commencement of any work, making of shop drawings or fabrication of components.  
Do not scale drawings. Use figured Dimensions.

Plotted and checked by	FZ	Verified	FZ	Approved	SH
Drawing Created (28/10/2020)	Drawing Created (by)	BP			
					22/10/2020
Scale	Project No	Drawing No	Issue		
1 : 100	180913	DA 9203	8		





Amendments			Amendments		
Issue	Description	Date	Issue	Description	Date
A	ISSUED FOR PRE-DA	30/10/2020			
B	ISSUED FOR INFORMATION	25/02/2021			
C	ISSUED FOR GANSW 3	24/03/2021			
1	95% DRAFT DA ISSUE	24/05/2021			
2	ISSUED FOR DA	28/05/2021			
3	REVISED SSDA	08/12/2021			
4	ISSUED FOR INFORMATION	25/03/2022			

Client  
Billbergia  
Client Details

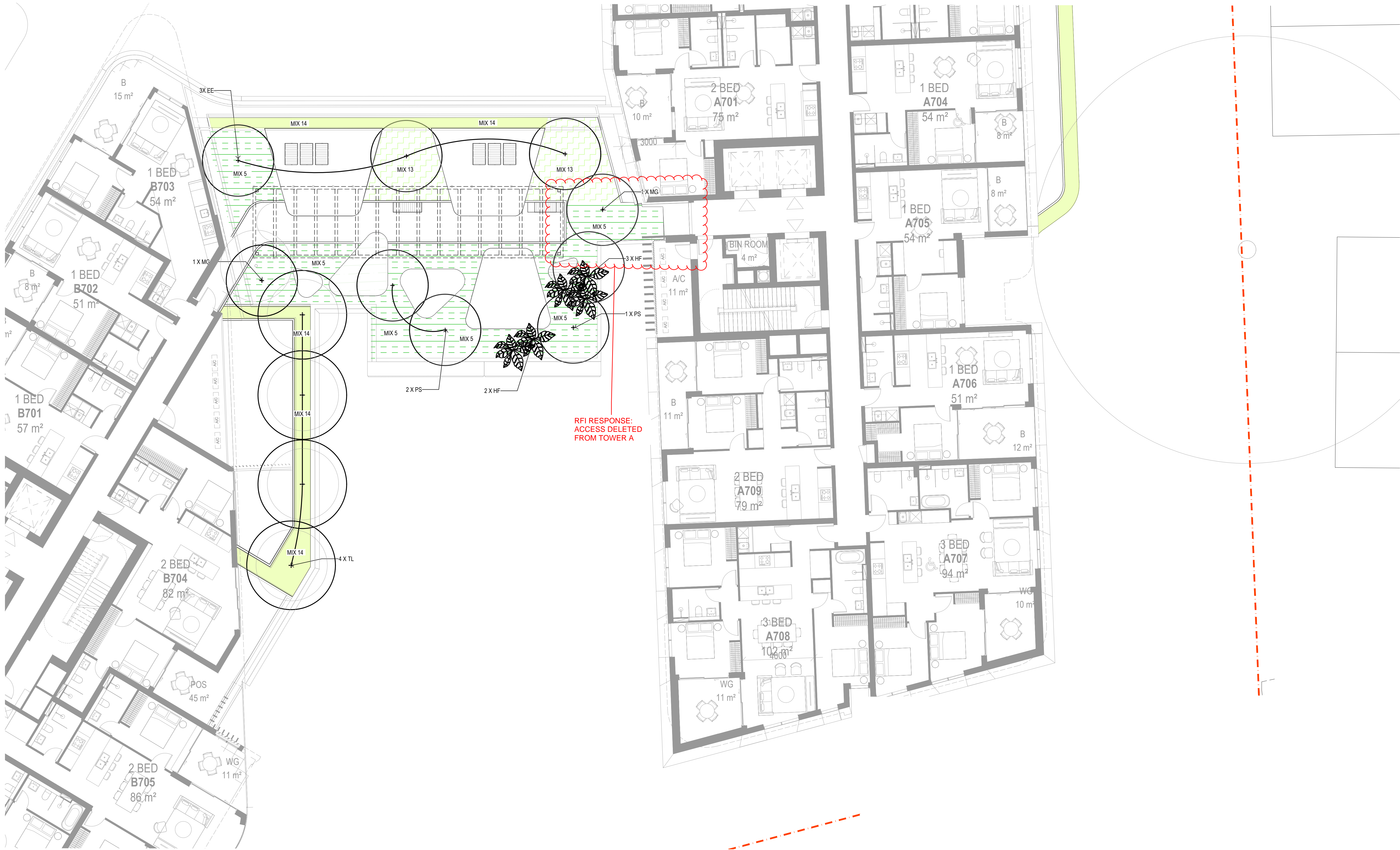


Group GSA Pty Ltd ABN 76 002 113 779  
Level 7, 50 William St East Sydney NSW  
Australia 2011  
www.groupgsa.com  
T +612 9361 4144 F +612 9332 3458  
architecture interior design urban design landscape  
nom architect M. Sheldon 3990

Project Title  
**Eden Street Arncliffe**  
Drawing Title  
**Landscape General Arrangement Plan  
Level 6-7**  
This drawing is the copyright of Group GSA Pty Ltd and may not be altered, reproduced or transmitted in any form or by any means in part or in whole without the written permission of Group GSA Pty Ltd.  
All levels and dimensions are to be checked and verified on site prior to the commencement of any work, making of shop drawings or fabrication of components.  
Do not scale drawings. Use figured Dimensions.

Plotted and checked by		FZ	
Verified	FZ	Approved	SH
Drawing Created (28/10/2020)		Drawing Created (by)	BP
22/10/2020			
Scale	Project No	Drawing No	Issue
1 : 250	180913	DA 9234	4





Amendments		
Issue	Description	Date
1	ISSUED FOR DA	28/05/2021
2	REVISED SSDA	08/12/2021
3	ISSUED FOR INFORMATION	25/03/2022

Client  
Billbergia  
Client Details



Group GSA Pty Ltd ABN 76 002 113 779  
Level 7, 50 William St East Sydney NSW  
Australia 2011  
www.groupgsa.com

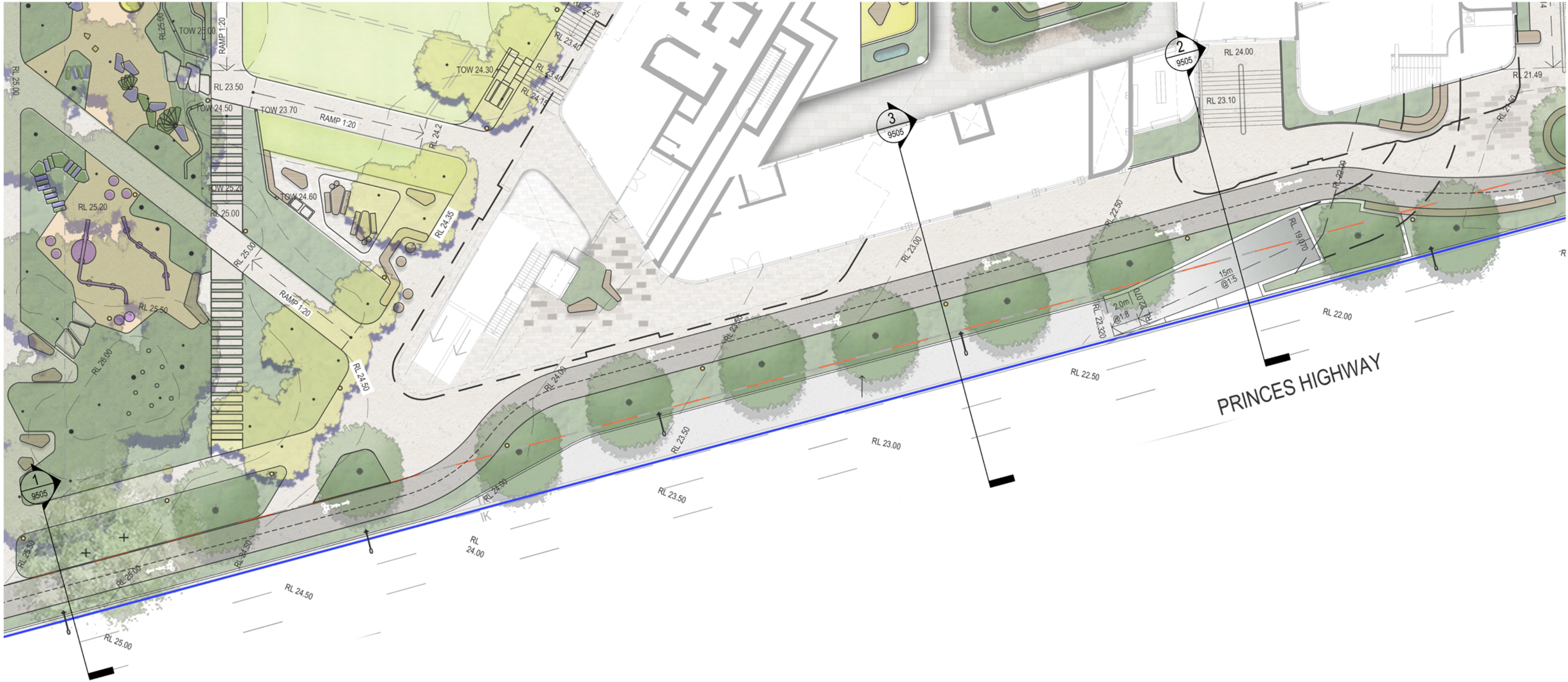
T +612 9361 4144 F +612 9332 3458  
architecture interior design urban design landscape  
nom architect M. Sheldon 3990

Project Title  
Eden Street Arncliffe  
Drawing Title  
Landscape Planting Plan  
Level 7 - TOWER B

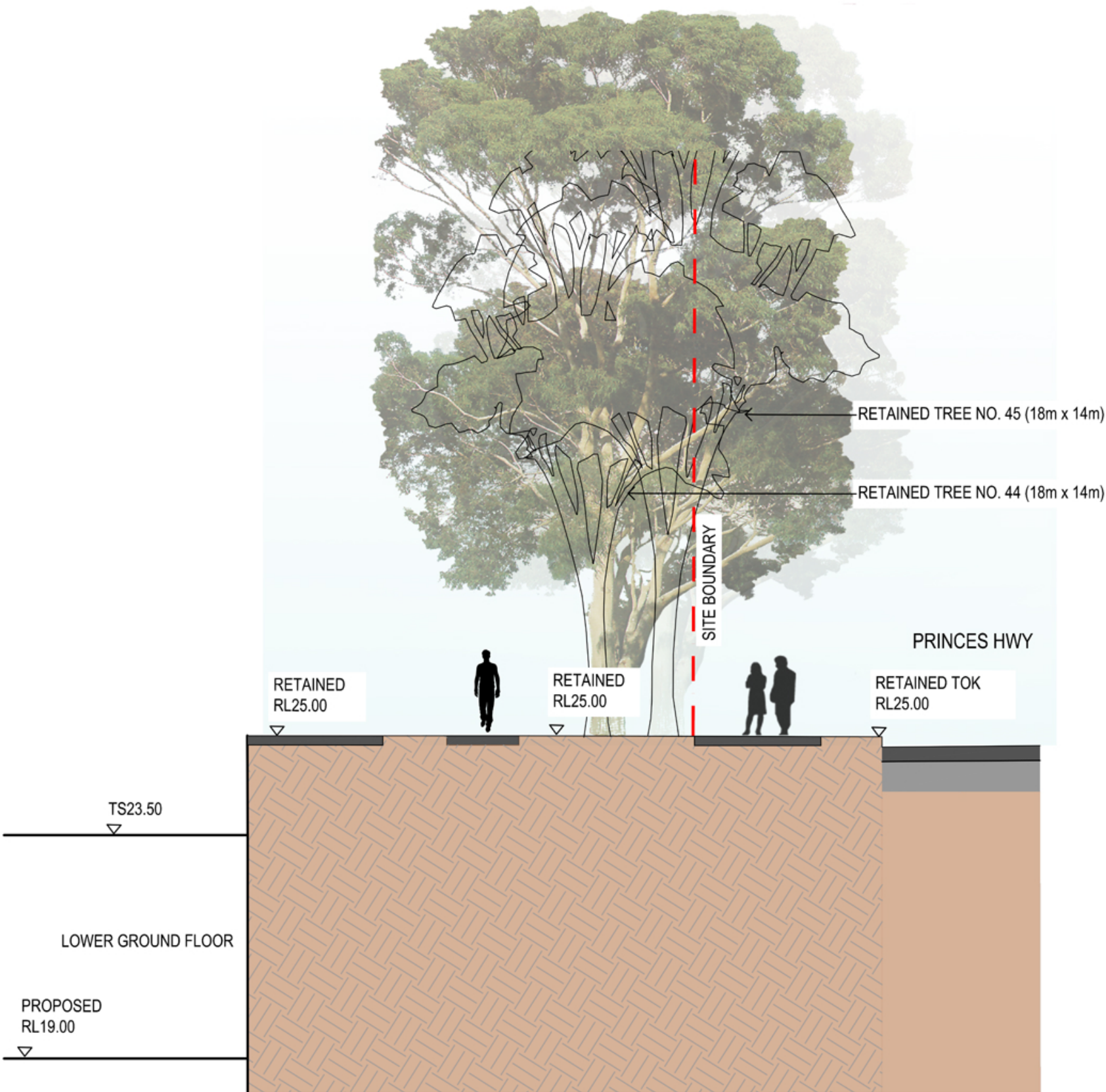
This drawing is the copyright of Group GSA Pty Ltd and may not be altered, reproduced or transmitted in any form or by any means in part or in whole without the written permission of Group GSA Pty Ltd.  
All levels and dimensions are to be checked and verified on site prior to the commencement of any work, making of shop drawings or fabrication of components.  
Do not scale drawings. Use figured Dimensions.

Plotted and checked by		FZ	
Verified	FZ	Approved	SH
Drawing Created (28/10/2020)		Drawing Created (by)	BP
22/10/2020			
Scale	Project No	Drawing No	Issue
1 : 100	180913	DA 9304	3

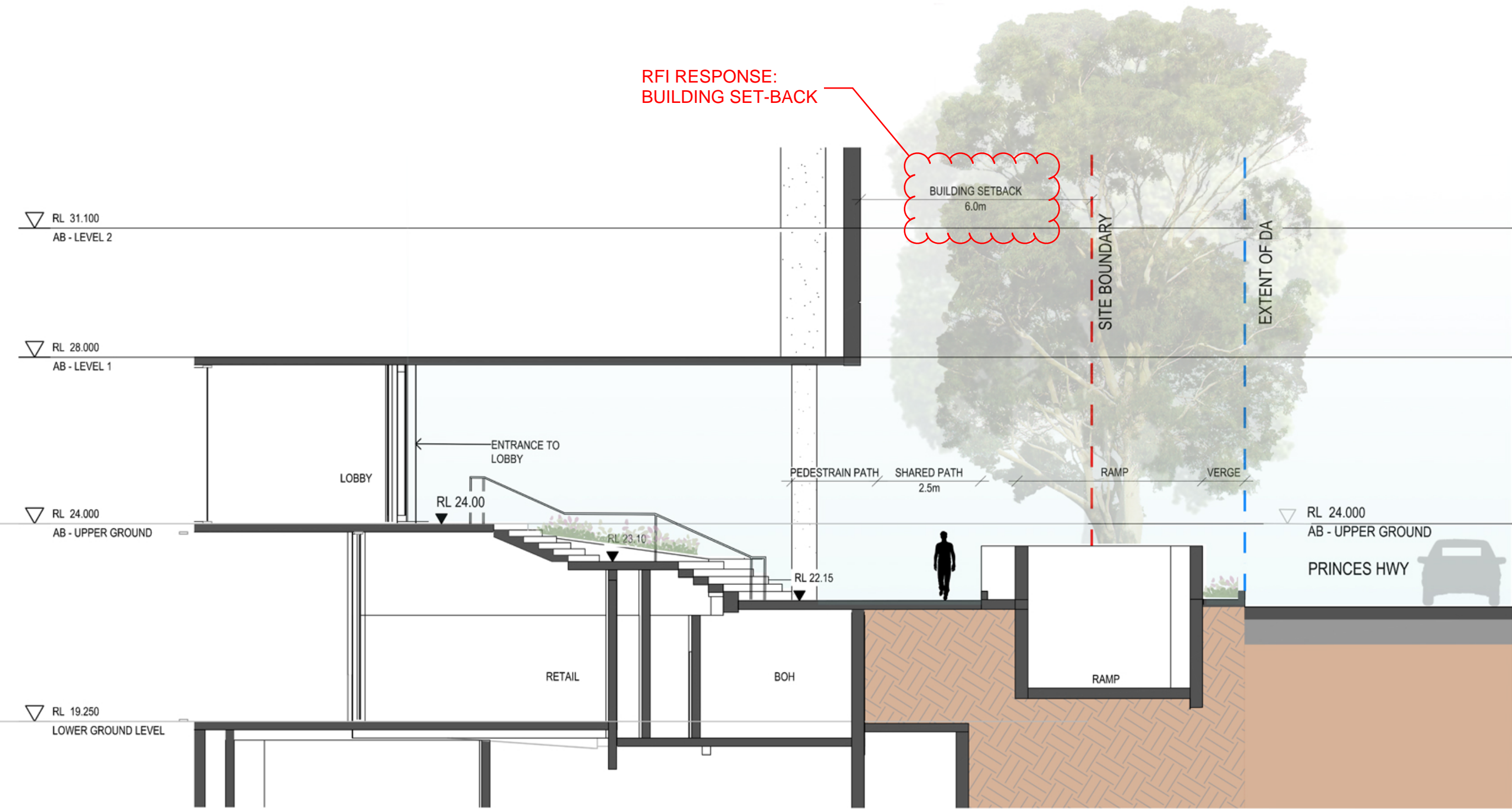




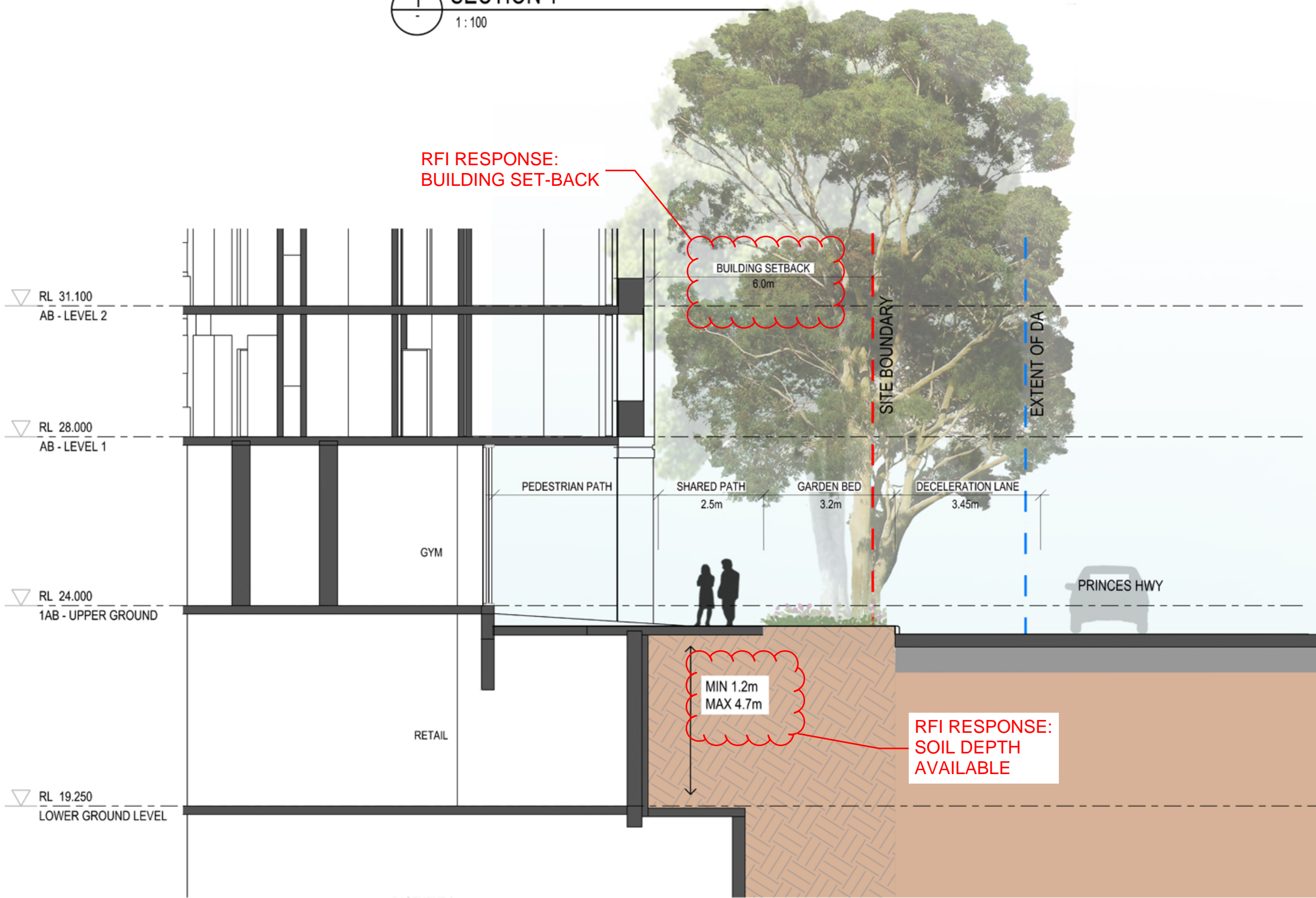
KEYPLAN  
1:200



SECTION 1  
1:100



SECTION 2  
1:100



SECTION 3  
1:100



Amendments			Amendments		
Issue	Description	Date	Issue	Description	Date
1	ISSUED FOR INFORMATION	10/12/2020			
2	ISSUED FOR GANSW 3	24/03/2021			
3	ISSUED FOR DA	28/06/2021			
4	REVISED SSDA	08/12/2021			
5	ISSUE FOR INFORMATION	25/03/2022			

Client  
Billbergia  
Client Details



Group GSA Pty Ltd ABN 76 002 113 779  
Level 7, 80 William St East Sydney NSW  
Australia 2011  
www.groupgsa.com

T +612 9361 4144 F +612 9332 3458  
architecture interior design urban design landscape  
nom architect M. Sheldon 3990

Project Title

Eden Street Arncliffe

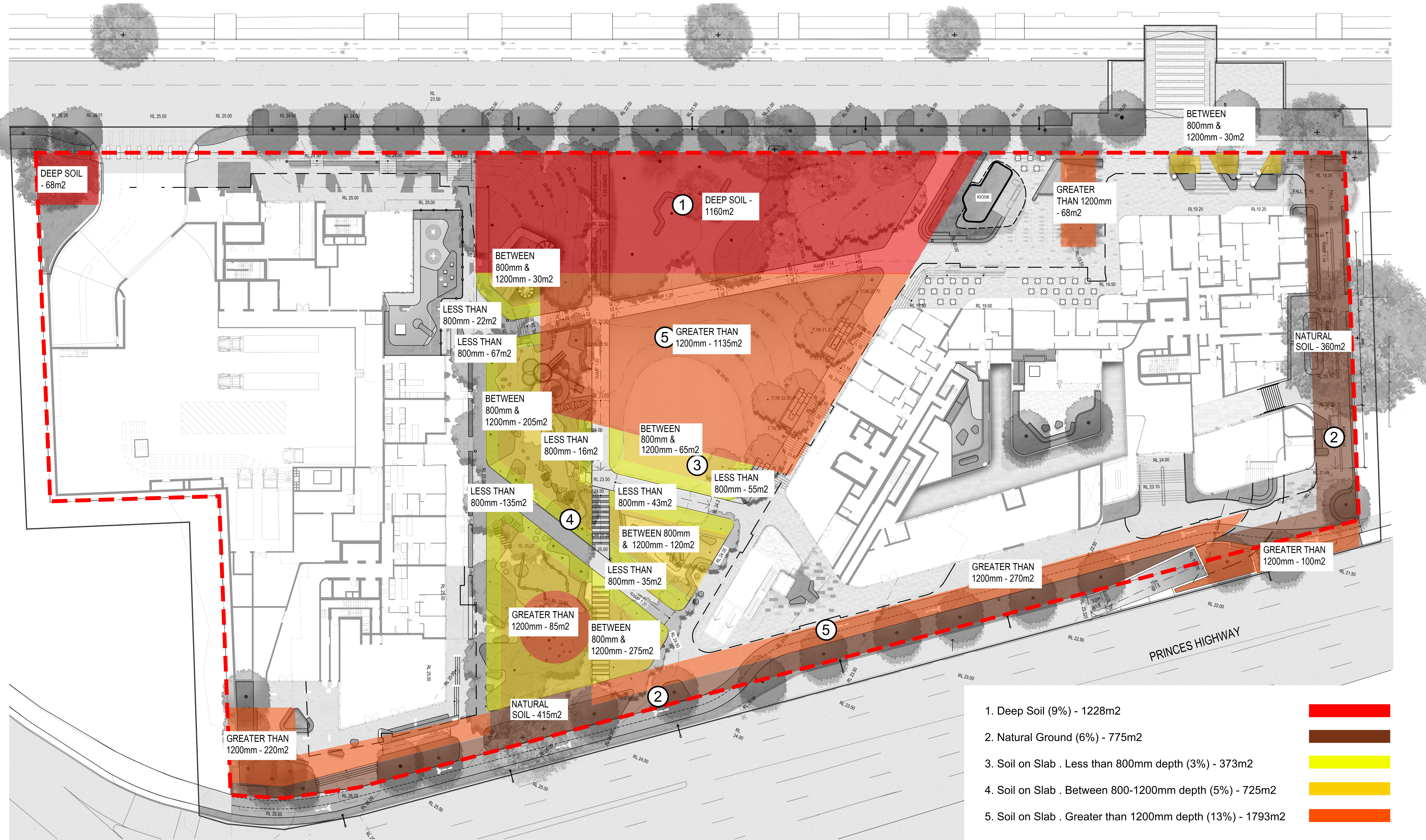
Drawing Title

Landscape Sections  
Princes Highway Interface

This drawing is the copyright of Group GSA Pty Ltd and may not be altered, reproduced or transmitted in any form or by any means in part or in whole without the written permission of Group GSA Pty Ltd. All levels and dimensions are to be checked and verified on site prior to the commencement of any work, making of shop drawings or fabrication of components. Do not scale drawings. Use figured Dimensions.

Plotted and checked by AB			
Verified	FZ	Approved	SH
Drawing Created (28/10/2020)		Drawing Created (by) AB	
		22/10/2020	
Scale	Project No	Drawing No	Issue
VARIES	180913	DA 9505	5





1. Deep Soil (9%) - 1228m2
2. Natural Ground (6%) - 775m2
3. Soil on Slab . Less than 800mm depth (3%) - 373m2
4. Soil on Slab . Between 800-1200mm depth (5%) - 725m2
5. Soil on Slab . Greater than 1200mm depth (13%) - 1793m2

RFI RESPONSE:  
LANDSCAPE SOIL TYPE PLAN

Amendments			Amendments		
Issue	Description	Date	Issue	Description	Date
1	ISSUE FOR INFORMATION	25/03/2022			

Client  
Billbergia  
Client Details

  
**Billbergia**  
creating communities®

**GROUP GSA**

Group GSA Pty Ltd ABN 76 002 113 779  
Level 7, 50 William St East Sydney NSW  
Australia 2011  
www.groupgsa.com

T +612 9361 4144 F +612 9332 3458

architecture interior design urban design landscape  
nom architect M. Sheldon 3990

Project Title  
**Eden Street Arncliffe**  
Drawing Title  
**Landscape Soil Plan**

This drawing is the copyright of Group GSA Pty Ltd and may not be altered, reproduced or transmitted in any form or by any means in part or in whole without the written permission of Group GSA Pty Ltd.  
All levels and dimensions are to be checked and verified on site prior to the commencement of any work, making of shop drawings or fabrication of components.  
Do not scale drawings. Use figured Dimensions.

Plotted and checked by		FZ	
Verified	FZ	Approved	SH
Drawing Created (28/10/2020)		Drawing Created (by)	BP
22/10/2020			
Scale	Project No	Drawing No	Issue
1 : 250	180913	DA 9706	1