

Check all dimensions and site conditions prior to commencement of any work, the purchase or ordering of any materials, fittings, plant, services or equipment and the preparation of shop drawings and or the fabrication of any components.
Do not scale drawings - refer to figured dimensions only. Any discrepancies shall immediately be referred to the architect for clarification.
All drawings may not be reproduced or distributed without prior permission from the architect.

80% Submission

- MATERIALS**
1. Powdercoated: Dark Bronze Frames
 2. Powdercoated: Light Bronze Fins
 3. Spandrel
 4. Concrete/ Barestone
 5. Charcoal Louvres
 6. Powdercoated: Medium Bronze Boards
 7. Metal Balustrade
 8. "Z" Purlins - Charcoal
 9. Tensile Steel Mesh for Climbing Plants
 10. Aluminium Cladding
 11. Dark Bronze Louvres



Revision	Date	Description	Initial	Checked
5	24.02.22	Issued for DA Modifications 02	CN	dfo
4	13.12.21	80% Issue	dfo	dfo
3	29.11.21	Issued for 80% Backgrounds	JB	dfo
2	29.11.21	Issued for DA Modifications	JB	dfo
1	24.09.21	50% Issue	DC	dfo

DOMA
42 Honeysuckle Drive
Newcastle, NSW
North Elevation

Status	Information
Scale	1 : 100 @ B1
Drawn	Author Checked Checker
Project No.	s12109.B
Plot Date	24/02/2022 5:37:26 PM
Plot File	

Drawing no. **AD.09.0010** Revision **5**

Melbourne 1 Nicholson Street
Melbourne VIC 3000 Australia
T 03 9664 6200 F 03 9664 6300
email mel@batesmart.com.au
http://www.batesmart.com.au

Sydney 43 Brisbane Street
Sunny Hills NSW 2010 Australia
T 02 8354 5100 F 02 8354 5199
email syd@batesmart.com.au
http://www.batesmart.com.au

Bates Smart Pty Ltd ABN 70 004 999 400

BATESSMART.

1 North Elevation 1 : 100

E:\300-Honeysuckle-NSW\09-0010-DOMA_HOTEL_ARCH_02020.rvt

Check all dimensions and site conditions prior to commencement of any work, the purchase or ordering of any materials, fittings, plant, services or equipment and the preparation of shop drawings and or the fabrication of any components.
 Do not scale drawings - refer to figured dimensions only. Any discrepancies shall immediately be referred to the architect for clarification.
 All drawings may not be reproduced or distributed without prior permission from the architect.

80% Submission

- MATERIALS**
1. Powdercoated: Dark Bronze Frames
 2. Powdercoated: Light Bronze Fins
 3. Spandrel
 4. Concrete/ Barestone
 5. Charcoal Louvres
 6. Powdercoated: Medium Bronze Boards
 7. Metal Balustrade
 8. *Z* Purlins - Charcoal
 9. Tensile Steel Mesh for Climbing Plants
 10. Aluminium Cladding
 11. Dark Bronze Louvres



2 West Elevation 1:100

Revision	Date	Description	Initial	Checked
5	24.02.22	Issued for DA Modifications 02	CN	dfe
4	13.12.21	80% Issue	dfe	dfe
3	29.11.21	Issued for 80% Backgrounds	JB	dfe
2	29.11.21	Issued for DA Modifications	JB	dfe
1	24.09.21	50% Issue	DC	dfe

DOMA

42 Honeysuckle Drive
Newcastle, NSW

West Elevation

Status	Information
Scale	1:100 @ B1
Drawn	Author Checked Checker
Project No.	s12109.B
Plot Date	24/02/2022 3:21:35 PM
Plot File	

Drawing no. Revision
AD.09.0020 4

Melbourne 1 Nicholson Street
Melbourne VIC 3000 Australia
T 03 9664 6200 F 03 9664 6300
email mel@batesmart.com.au
http://www.batesmart.com.au

Sydney 43 Brisbane Street
Sunny Hills NSW 2010 Australia
T 02 8354 5100 F 02 8354 5199
email syd@batesmart.com.au
http://www.batesmart.com.au

Bates Smart Pty Ltd ABN 70 004 999 400

B1 - Honeysuckle, Newcastle, NSW, DOMA HOTEL_ARCH_02020.rvt

Check all dimensions and site conditions prior to commencement of any work, the purchase or ordering of any materials, fittings, plant, services or equipment and the preparation of shop drawings and or the fabrication of any components.
 Do not scale drawings - refer to figured dimensions only. Any discrepancies shall immediately be referred to the architect for clarification.
 All drawings may not be reproduced or distributed without prior permission from the architect.

80% Submission

- MATERIALS**
1. Powdercoated: Dark Bronze Frames
 2. Powdercoated: Light Bronze Fins
 3. Spandrel
 4. Concrete/ Barestone
 5. Charcoal Louvres
 6. Powdercoated: Medium Bronze Boards
 7. Metal Balustrade
 8. *Z* Purlins - Charcoal
 9. Tensile Steel Mesh for Climbing Plants
 10. Aluminium Cladding
 11. Dark Bronze Louvres



Revision	Date	Description	Initial	Checked
5	24.02.22	Issued for DA Modifications 02	CN	dfe
4	13.12.21	80% Issue	dfe	dfe
3	29.11.21	Issued for 80% Backgrounds	JB	dfe
2	29.11.21	Issued for DA Modifications	JB	dfe
1	24.09.21	50% Issue	DG	dfe

DOMA

42 Honeysuckle Drive
Newcastle, NSW

South Elevation

Status	Information
Scale	1 : 100 @ B1
Drawn	Author Checked Checker
Project No.	s12109.B
Plot Date	24/02/2022 4:54:29 PM
Plot File	

Drawing no. Revision
AD.09.0030 4

Melbourne 1 Nicholson Street
Melbourne VIC 3000 Australia
T 03 9664 6200 F 03 9664 6300
email mel@batesmart.com.au
http://www.batesmart.com.au

Sydney 43 Brisbane Street
Sunny Hills NSW 2010 Australia
T 02 8354 5100 F 02 8354 5199
email syd@batesmart.com.au
http://www.batesmart.com.au

Bates Smart Pty Ltd ABN 70 004 999 400

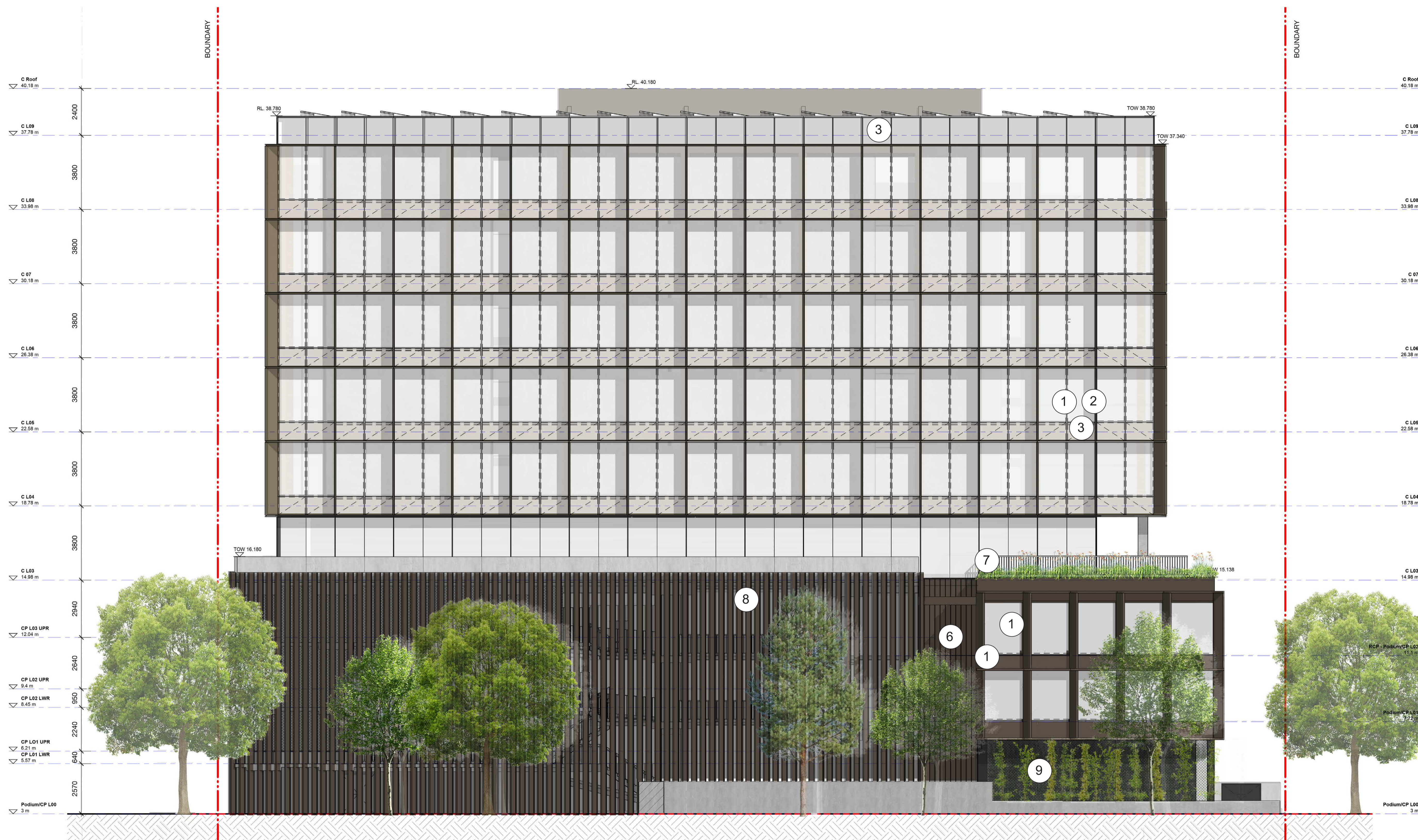
1 South Elevation
 1 : 100

300 Honeysuckle Newcastle2HD_BES_DOMA_HOTEL_ARCH_02020_V1

Check all dimensions and site conditions prior to commencement of any work, the purchase or ordering of any materials, fittings, plant, services or equipment and the preparation of shop drawings and or the fabrication of any components.
Do not scale drawings - refer to figured dimensions only. Any discrepancies shall immediately be referred to the architect for clarification.
All drawings may not be reproduced or distributed without prior permission from the architect.

80% Submission

- MATERIALS**
1. Powdercoated: Dark Bronze Frames
 2. Powdercoated:Light Bronze Fins
 3. Spandrel
 4. Concrete/ Barestone
 5. Charcoal Louvres
 6. Powdercoated: Medium Bronze Boards
 7. Metal Balustrade
 8. *Z* Purlins - Charcoal
 9. Tensile Steel Mesh for Climbing Plants
 10. Aluminium Cladding
 11. Dark Bronze Louvres



Revision	Date	Description	Initial	Checked
5	24.02.22	Issued for DA Modifications 02	CN	dfe
4	13.12.21	80% Issue	dfe	dfe
3	29.11.21	Issued for 80% Backgrounds	JB	dfe
2	29.11.21	Issued for DA Modifications	JB	dfe
1	24.09.21	50% Issue	DC	dfe

DOMA

42 Honeysuckle Drive
Newcastle, NSW

East Elevation

Status	Information
Scale	1 : 100 @ B1
Drawn	Author Checked Checker
Project No.	s12109.B
Plot Date	24/02/2022 3:19:10 PM
Plot File	

Drawing no. Revision
AD.09.0040 4

Melbourne 1 Nicholson Street
Melbourne VIC 3000 Australia
T 03 9664 6200 F 03 9664 6300
email mel@batesmart.com.au
http://www.batesmart.com.au

Sydney 43 Brisbane Street
Sunny Hills NSW 2010 Australia
T 02 9354 5100 F 02 9354 5199
email syd@batesmart.com.au
http://www.batesmart.com.au

Bates Smart Pty Ltd ABN 70 004 999 400

BATESSMART.

1 East Elevation 1 : 100

Check all dimensions and site conditions prior to commencement of any work, the purchase or ordering of any materials, fittings, plant, services or equipment and the preparation of shop drawings and or the fabrication of any components.
Do not scale drawings - refer to figured dimensions only. Any discrepancies shall immediately be referred to the architect for clarification.
All drawings may not be reproduced or distributed without prior permission from the architect.

80% Submission

- MATERIALS**
1. Powdercoated: Dark Bronze Frames
 2. Powdercoated: Light Bronze Fins
 3. Spandrel
 4. Concrete/ Barestone
 5. Charcoal Louvres
 6. Powdercoated: Medium Bronze Boards
 7. Metal Balustrade
 8. *Z" Purlins - Charcoal
 9. Tensile Steel Mesh for Climbing Plants
 10. Aluminium Cladding
 11. Dark Bronze Louvres



Revision	Date	Description	Initial	Checked
5	24.02.22	Issued for DA Modifications 02	CN	dle
4	13.12.21	80% Issue	dle	dle
3	28.11.21	Issued for 80% Backgrounds	JB	dle
2	28.11.21	Issued for DA Modifications	JB	dle
1	24.09.21	50% Issue	DG	dle

DOMA

42 Honeysuckle Drive
Newcastle, NSW

Courtyard Elevation - East

Status	Information
Scale	1 : 100 @ B1
Drawn	Author Checked Checker
Project No.	s12109 B
Plot Date	24/02/2022 11:58:54 AM
Plot File	

Drawing no. **AD.09.0100** Revision **4**

Melbourne 1 Nicholson Street
Melbourne VIC 3000 Australia
T 03 9664 6200 F 03 9664 6300
email mel@batesmart.com.au
http://www.batesmart.com.au

Sydney 43 Brisbane Street
Sunny Hills NSW 2010 Australia
T 02 8354 5100 F 02 8354 5199
email syd@batesmart.com.au
http://www.batesmart.com.au

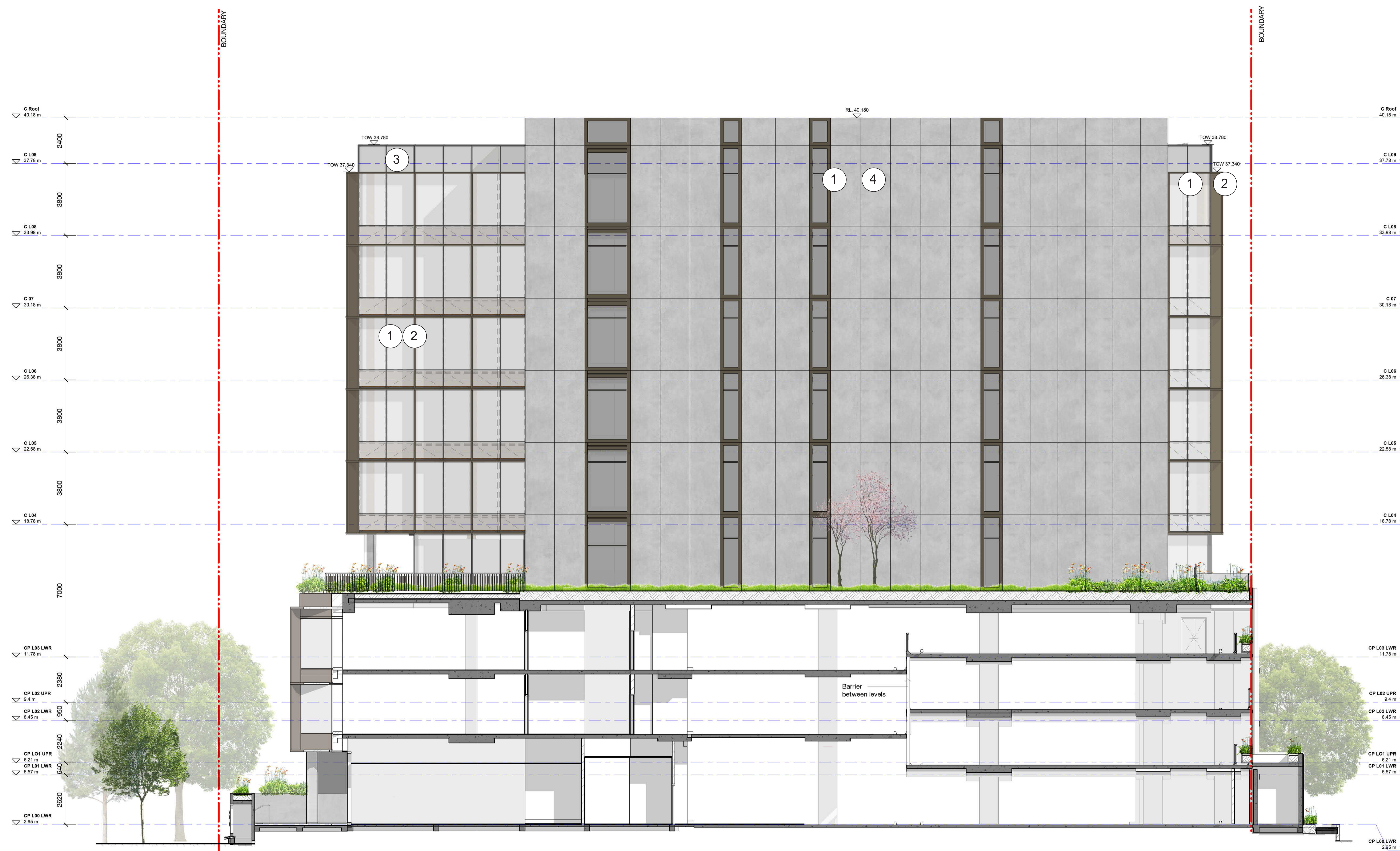
Bates Smart Pty Ltd ABN 70 004 999 400

1 Courtyard Elevation - East 1:100

Check all dimensions and site conditions prior to commencement of any work, the purchase or ordering of any materials, fittings, plant, services or equipment and the preparation of shop drawings and or the fabrication of any components.
Do not scale drawings - refer to figured dimensions only. Any discrepancies shall immediately be referred to the architect for clarification.
All drawings may not be reproduced or distributed without prior permission from the architect.

80% Submission

- MATERIALS**
1. Powdercoated: Dark Bronze Frames
 2. Powdercoated: Light Bronze Fins
 3. Spandrel
 4. Concrete/ Barestone
 5. Charcoal Louvres
 6. Powdercoated: Medium Bronze Boards
 7. Metal Balustrade
 8. *Z" Purlins - Charcoal
 9. Tensile Steel Mesh for Climbing Plants
 10. Aluminium Cladding
 11. Dark Bronze Louvres



1 Courtyard Elevation - West
1:100

Revision	Date	Description	Initial	Checked
5	24.02.22	Issued for DA Modifications 02	CN	die
4	13.12.21	80% Issue	die	die
3	28.11.21	Issued for 80% Backgrounds	JB	die
2	28.11.21	Issued for DA Modifications	JB	die
1	24.09.21	50% Issue	DG	die

DOMA

42 Honeysuckle Drive
Newcastle, NSW

Courtyard Elevation - West

Status	Information
Scale	1:100 @ B1
Drawn	Author Checked Checker
Project No.	s12109.B
Plot Date	24/02/2022 1:02:46 PM

Drawing no. **AD.09.0110** Revision **4**

Melbourne 1 Nicholson Street
Melbourne VIC 3000 Australia
T 03 9664 6200 F 03 9664 6300
email mel@batesmart.com.au
http://www.batesmart.com.au

Sydney 43 Brisbane Street
Surry Hills NSW 2010 Australia
T 02 8354 5100 F 02 8354 5199
email syd@batesmart.com.au
http://www.batesmart.com.au

Bates Smart Pty Ltd ABN 70 004 999 400

BATESSMART