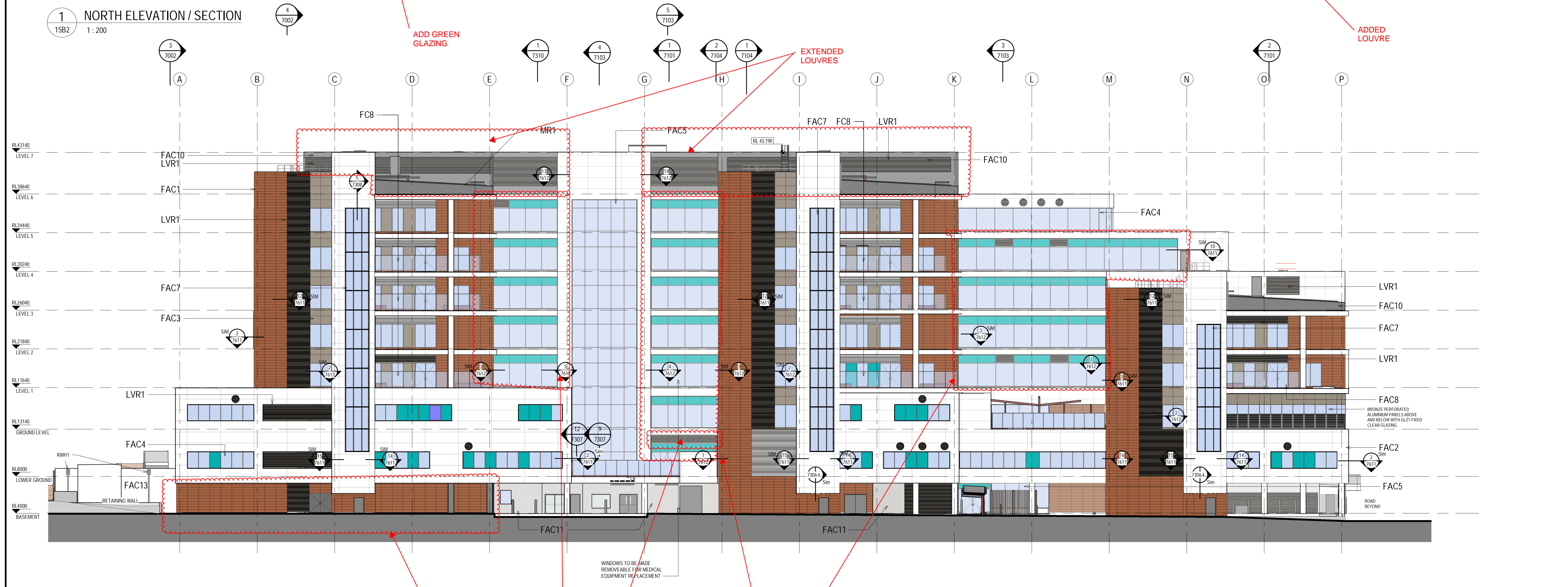


1 NORTH ELEVATION / SECTION  
15B2 1:200



2 SOUTH ELEVATION  
15B2 1:200

**NOTES:**  
TO BE READ IN CONJUNCTION WITH SERVICES, STRUCTURAL & CIVIL DOCUMENTATION. ANY DISCREPANCY TO BE BROUGHT TO THE ATTENTION OF JACOBS.

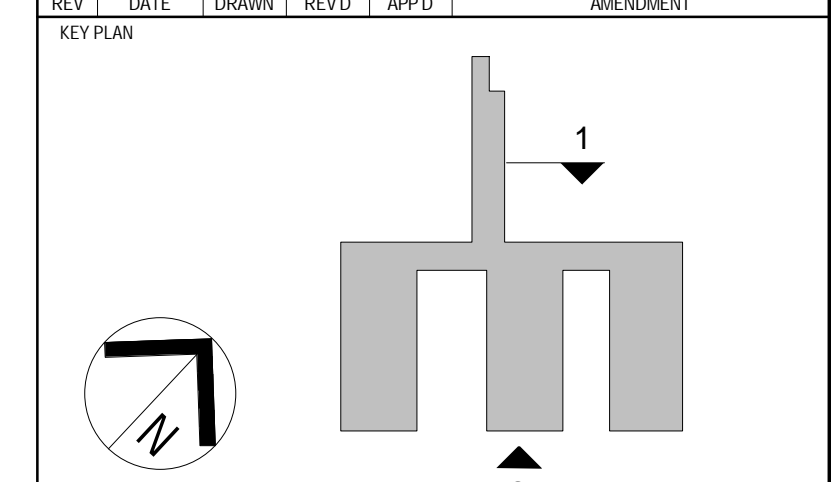
**ELEVATION LEGEND:**

- FAC1 TERRACOTTA CLADDING
- FAC2 REINFORCED CONCRETE CLADDING (FIBRE C)
- FAC3 ALUMINIUM SOLID CLADDING
- FAC4 FRAMED GLAZING (WHITE / GREEN DENOTES COLOURBACK PANEL)
- FAC5 CURTAIN WALL GLAZING (PROPRIETARY SYSTEM)
- FAC6 CURTAIN WALL WITH GLAZING ALUMINIUM CLIPS & IRIS STEEL MULLIONS AS PER STRUCTURAL ENGINEER (WHITE DENOTES COLOURBACK PANEL)
- FAC7 CURTAIN WALL (CURVED TRANSOMS + GLAZING) VERTICALS - SILICONE/ UNCAPPED HORIZONTALS - CAPPED
- FAC8 FIXED GLASS BALUSTRADE SCREEN
- FAC9 FRAMELESS FIXED GLAZING
- FAC10 METAL SHEET CLADDING (COLOURBOND)
- FAC11 EXPOSED FLAT FACE MASONRY BLOCKWORK (PORCELAIN COLOURED)
- FAC12 CEMENTITIOUS RENDER FACADE SYSTEM
- FAC13 OFF FORM CONCRETE SEALER
- FR1 FLAT ROOF MEMBRANE WITH SELECT PAVES/BALLAST
- MR1 METAL ROOF SHEETING WITH 100mm INSULATION ROOF RAISERS
- LVR1 HORIZONTAL LOUVRES
- LVR2 ACTUATED POWER GLASS LOUVRES
- LVR3 VERTICAL LOUVRES
- LVR4 600mm DEEP ACOUSTIC LOUVRES, HORIZONTAL

**GLAZING LEGEND:**

- GLZ1 STANDARD CLEAR SINGLE GLAZED IGS
- GLZ2 CLEAR SINGLE GLAZED IGS, WITH JOCKEY SASH & INTEGRAL BLINDS
- GLZ3 TRANSLUCENT SINGLE-GLAZED IGS
- GLZ4 WHITE OPAQUE COLOURBACK SINGLE GLAZING BACKED WITH INSULATION
- GLZ5 GREEN OPAQUE COLOURBACK SINGLE GLAZING BACKED WITH INSULATION
- GLZ6 CLEAR SINGLE GLAZING
- GLZ7 STANDARD CLEAR DOUBLE GLAZED IGS
- GLZ8 BRONZE OPAQUE COLOURBACK SINGLE GLAZING BACKED WITH INSULATION

REV	DATE	BY	CHKD	APPD	DESCRIPTION
H	20.02.20	LH	WB		SECTION 4.55 MODIFICATION ISSUE
G	14.02.20	LH	WB		ISSUED FOR C&A
F	03.02.20	LH	WB		SECTION 4.55 MODIFICATION ISSUE
E	20.12.19	BA	WB		FACADE UPDATES - COLOURBACK TO AIR LOBBY, UPDATES TO MCM AND FACADE TO ARCHITECTURAL UPDATES WINDOW REPOSITIONING
D	04.12.19	BA	WB		UPDATES TO FACADE - EAST ELEVATION BANDING DETAIL UPDATE & COLOURBACK GLASS REVISED
C	19.11.19	BA	WB		GENERAL UPDATES - ELEVATIONS & NOTE REMOVED FROM CONCRETE OUTLINE
B	08.11.19	BA	WB		GENERAL UPDATES
A	27.09.19	BA	WB		ISSUE FOR CONSTRUCTION



CLIENT

LEVEL 7, 177 PACIFIC HIGHWAY  
NORTH SYDNEY  
NSW 2060  
AUSTRALIA

TEL: +61 2 9628 2100  
FAX: +61 2 9628 2110  
WEB: jacobsc.com

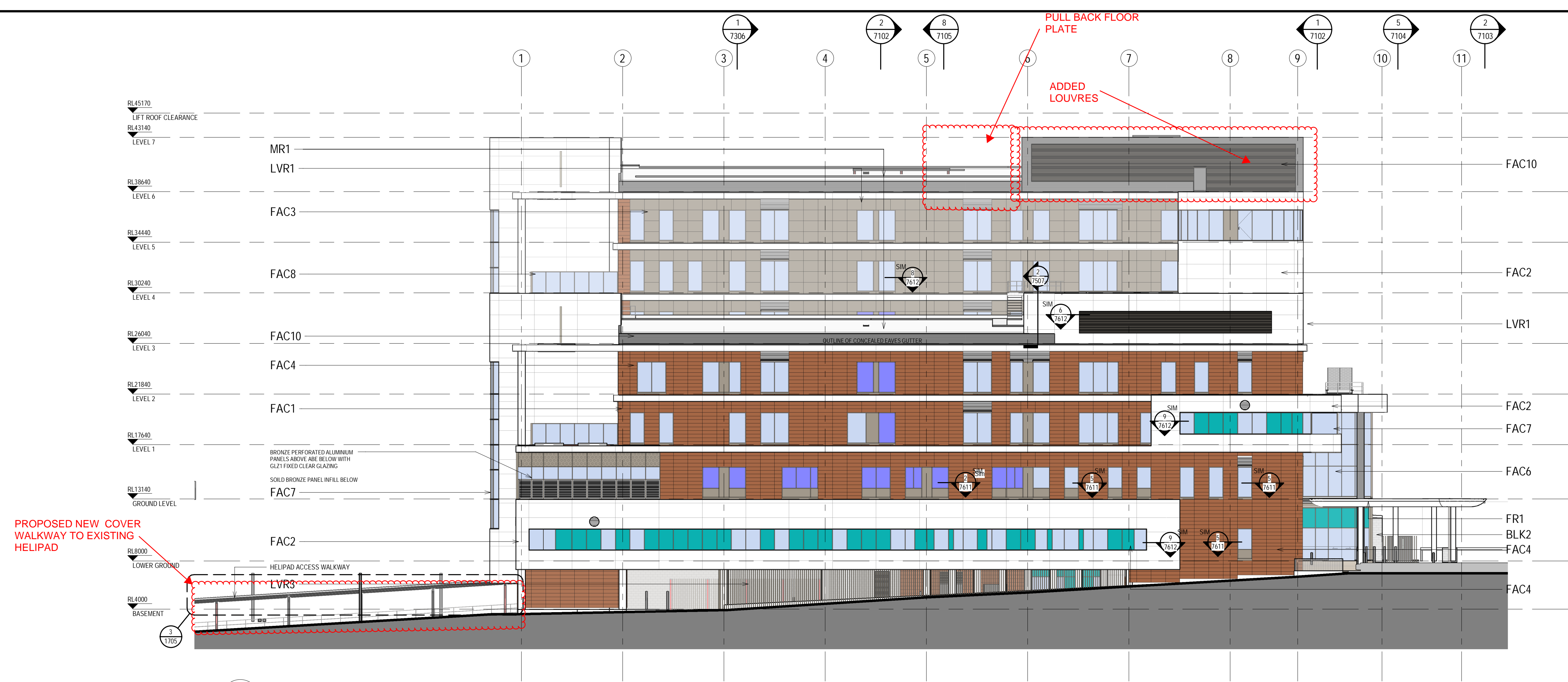
PROJECT  
**CONCORD HOSPITAL REDEVELOPMENT STAGE 1**

HOSPITAL ROAD  
CONCORD NSW 2139

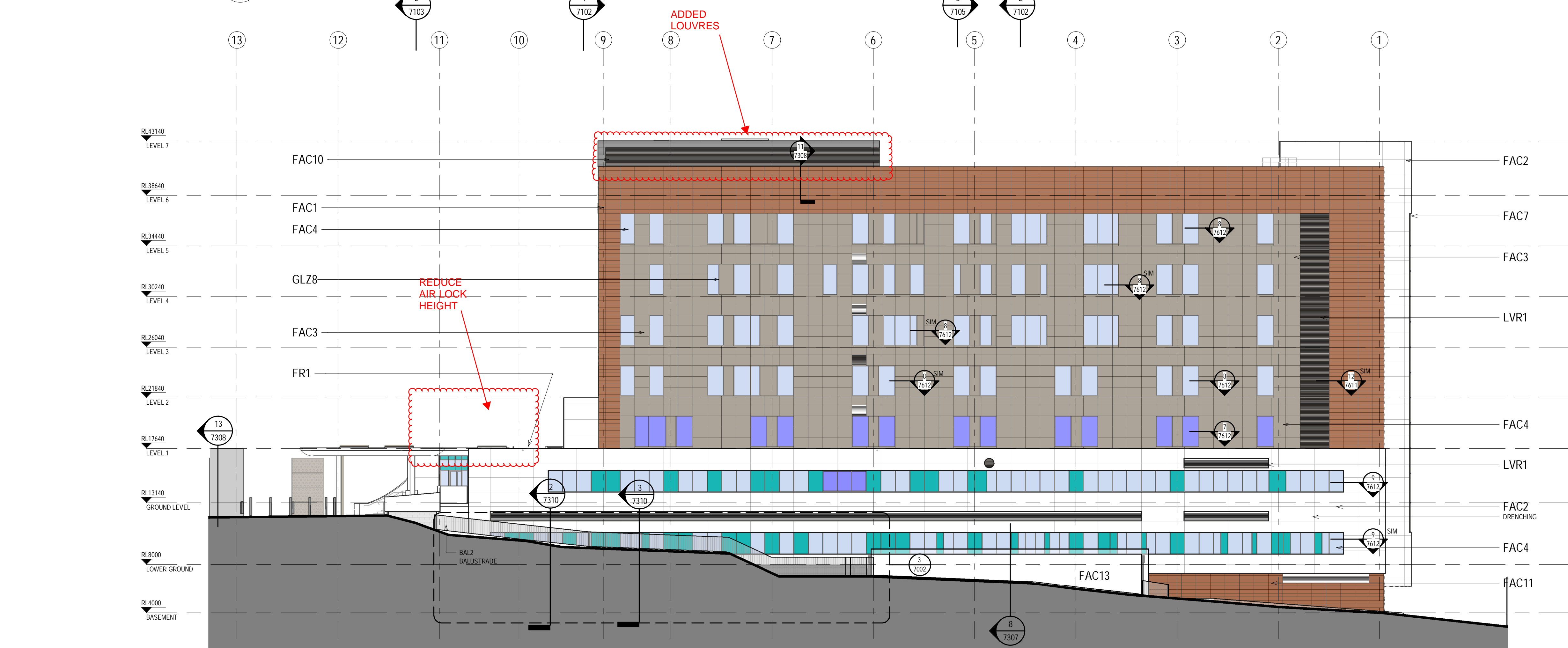
TITLE  
**ELEVATION - NORTH & SOUTH**

**FOR CERTIFICATION**

DRAWN MMW/BY	DRAWING CHECK PCW/B
DESIGNED AC/DG	DESIGN REVIEW CY
REVIEWED	DATE
APPROVED	DATE
SCALE 1:200 @ B1	
PROJECT NO. IA064700	DRAWING NO. NEWB-AR-DRG-7001
REV	H



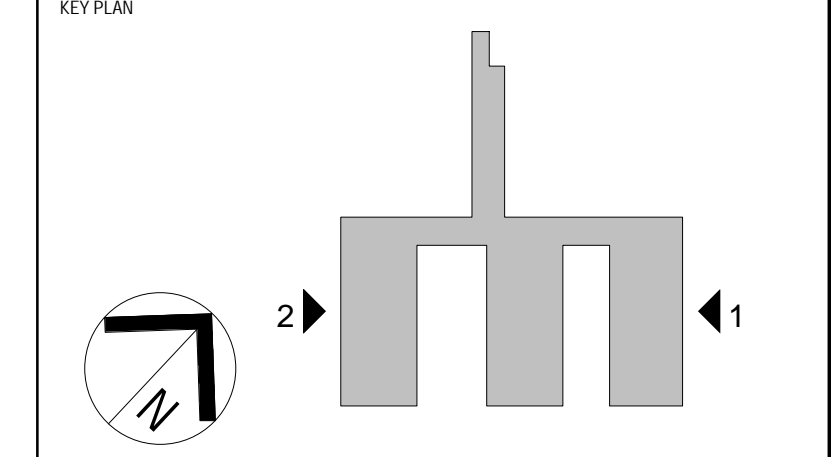
1 EAST ELEVATION  
15B2 1:200



2 WEST ELEVATION  
15B2 1:200

- NOTES:**  
TO BE READ IN CONJUNCTION WITH SERVICES, STRUCTURAL & CIVIL DOCUMENTATION. ANY DISCREPANCY TO BE BROUGHT TO THE ATTENTION OF JACOBS.
- ELEVATION LEGEND:**
- FAC1 TERRACOTTA CLADDING
  - FAC2 REINFORCED CONCRETE CLADDING (FIBRE C)
  - FAC3 ALUMINIUM SOLID CLADDING
  - FAC4 FRAMED GLAZING (WHITE/GREEN DENOTES COLOURBACK PANEL)
  - FAC5 CURTAIN WALL GLAZING (PROPRIETARY SYSTEM)
  - FAC6 CURTAIN WALL WITH GLAZING ALUMINIUM CLIPS & RIS STEEL MULLIONS AS PER STRUCTURAL ENGINEER (WHITE DENOTES COLOURBACK PANEL)
  - FAC7 CURTAIN WALL (CURVED TRANSOMS + GLAZING VERTICALS - SILICONE/UNCAPPED HORIZONTALS - CAPPED)
  - FAC8 FIXED GLASS BALUSTRADE SCREEN
  - FAC9 FRAMELESS FIXED GLAZING
  - FAC10 METAL SHEET CLADDING (COLOURBOND)
  - FAC11 EXPOSED FLAT FACE MASONRY BLOCKWORK (PORCELAIN COLOURED)
  - FAC12 CEMENTITIOUS RENDER FACADE SYSTEM
  - FAC13 OFF FORM CONCRETE SEALER
  - FR1 FLAT ROOF MEMBRANE WITH SELECT PAVERS/BALLAST
  - MR1 METAL ROOF SHEETING WITH 100mm INSULATION ROOF RASERS
  - LVR1 HORIZONTAL LOUVRES
  - LVR2 ACTUATED POWER GLASS LOUVRES
  - LVR3 VERTICAL LOUVRES
  - LVR4 400mm DEEP ACOUSTIC LOUVRES, HORIZONTAL
- GLAZING LEGEND:**
- GLZ1 STANDARD CLEAR SINGLE GLAZED IGUs
  - GLZ2 CLEAR SINGLE GLAZED IGUs WITH JOCKEY SASH & INTEGRAL BLINDS
  - GLZ3 TRANSLUCENT SINGLE-GLAZED IGUs
  - GLZ4 WHITE OPAQUE COLOURBACK SINGLE GLAZING BACKED WITH INSULATION
  - GLZ5 GREEN OPAQUE COLOURBACK SINGLE GLAZING BACKED WITH INSULATION
  - GLZ6 CLEAR SINGLE GLAZING
  - GLZ7 STANDARD CLEAR DOUBLE GLAZED IGUs
  - GLZ8 BRONZE OPAQUE COLOURBACK SINGLE GLAZING BACKED WITH INSULATION

REV	DATE	BY	CHKD	APPD	DESCRIPTION
F	13.03.20	LH	WS		SECTION 4.55 MODIFICATION ISSUE
E	14.02.20	LH	WB		ISSUED FOR CC4A
D	03.02.20	LH	WB		SECTION 4.55 MODIFICATION ISSUE
C	04.12.19	BA	WB		UPDATES TO FACADE - EAST ELEVATION BANDING DETAIL UPDATE & COLOURBACK GLASS REVISION
B	08.11.19	BA	WB		GENERAL UPDATES
A	27.09.19	BA	WB		ISSUE FOR CONSTRUCTION
Z1	03.09.19	BA	WB		ELEVATIONS & DETAILS UPDATE - LOUVRES WINDOW TACS ADDED & GENERAL UPDATES
Z0	26.06.19	LH	WB		ISSUE FOR CROWN CERTIFICATE 3
T9	03.04.19	LH	WB		DRAFT FACADE PACKAGE
REV	DATE	BY	CHKD	APPD	DESCRIPTION



CLIENT

JACOBS

LEVEL 7, 177 PACIFIC HIGHWAY  
NORTH SYDNEY  
NSW 2060  
AUSTRALIA

TEL: +61 2 9628 2100  
FAX: +61 2 9628 2210  
WEB: jacobs.com

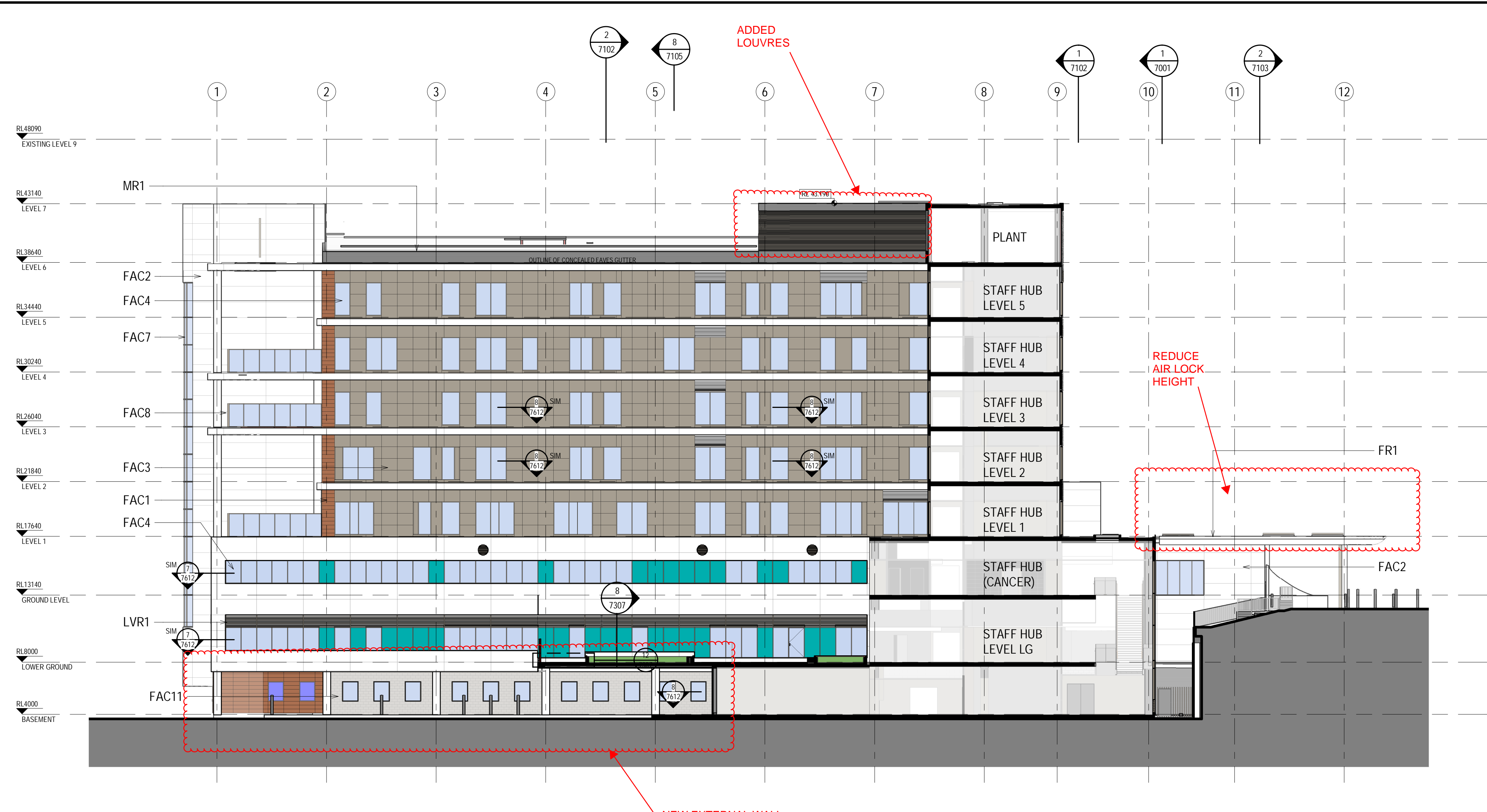
PROJECT  
**CONCORD HOSPITAL REDEVELOPMENT STAGE 1**

HOSPITAL ROAD  
CONCORD NSW 2139

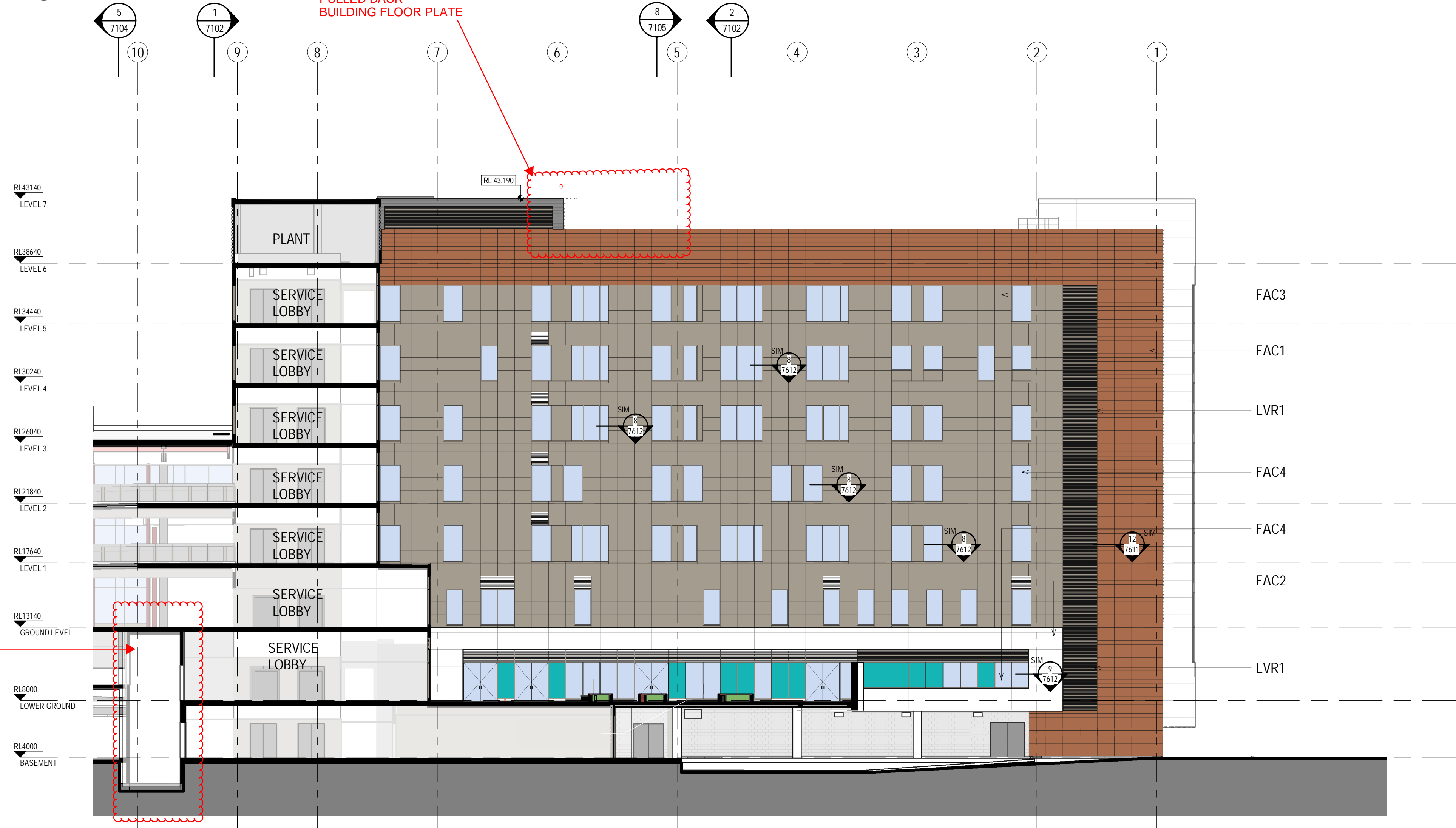
TITLE  
**ELEVATION - EAST & WEST**

**FOR CERTIFICATION**

DRAWN MW/BY	DRAWING CHECK PC/WB
DESIGNED AC/DG	DESIGN REVIEW CY
REVIEWED	DATE
APPROVED	DATE
SCALE 1:200 @ B1	
PROJECT No.	DRAWING No.
IA064700	NEWB-AR-DRG-7002
REV	F



1 IPU 1 - EAST ELEVATION  
15B2 1:200



2 IPU 2 - WEST ELEVATION  
15B2 1:200

**NOTES:**  
TO BE READ IN CONJUNCTION WITH SERVICES, STRUCTURAL & CIVIL DOCUMENTATION. ANY DISCREPANCY TO BE BROUGHT TO THE ATTENTION OF JACOBS.

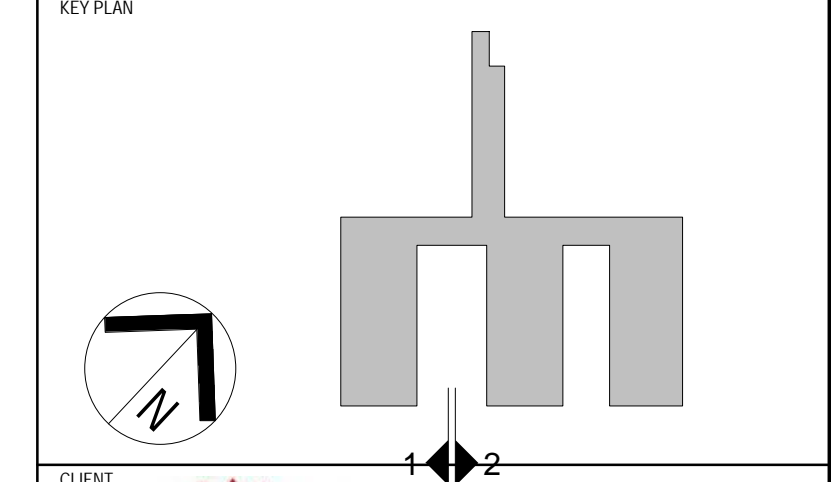
**ELEVATION LEGEND:**

- FAC1 TERRACOTTA CLADDING
- FAC2 REINFORCED CONCRETE CLADDING (FIBRE C)
- FAC3 ALUMINIUM SOLID CLADDING
- FAC4 FRAMED GLAZING (WHITE / GREEN DENOTES COLOURBACK PANEL)
- FAC5 CURTAIN WALL GLAZING (PROPRIETARY SYSTEM)
- FAC6 CURTAIN WALL WITH GLAZING ALUMINIUM CLIPS & RH'S STEEL MULLIONS (WHITE DENOTES COLOURBACK PANEL)
- FAC7 CURTAIN WALL (CURVED TRANSOMS + GLAZING VERTICALS - SILICONE/ UNCAPPED HORIZONTALS - CAPPED)
- FAC8 FIXED GLASS BALUSTRADE SCREEN
- FAC9 FRAMELESS FIXED GLAZING
- FAC10 METAL SHEET CLADDING (COLOURBOND)
- FAC11 EXPOSED FLAT FACE MASONRY BLOCKWORK (PORCELAIN COLOURED)
- FAC12 CEMENTITIOUS RENDER FACADE SYSTEM
- FAC13 OFF FORM CONCRETE SEALER
- FR1 FLAT ROOF MEMBRANE WITH SELECT PAVERS/BALLAST
- MR1 METAL ROOF SHEETING WITH 100mm INSULATION ROOF RAISERS
- LVR1 HORIZONTAL LOUVRES
- LVR2 ACTUATED POWER GLASS LOUVRES
- LVR3 VERTICAL LOUVRES
- LVR4 400mm DEEP ACOUSTIC LOUVRES, HORIZONTAL

**GLAZING LEGEND:**

- GL21 STANDARD CLEAR SINGLE GLAZED IGUS
- GL22 CLEAR SINGLE GLAZED IGUS WITH JOCKEY SASH & INTEGRAL BLINDS
- GL23 TRANSLUCENT SINGLE-GLAZED IGUS
- GL24 WHITE OPAQUE COLOURBACK SINGLE GLAZING BACKED WITH INSULATION
- GL25 GREEN OPAQUE COLOURBACK SINGLE GLAZING BACKED WITH INSULATION
- GL26 CLEAR SINGLE GLAZING
- GL27 STANDARD CLEAR DOUBLE GLAZED IGUS
- GL28 BRONZE OPAQUE COLOURBACK SINGLE GLAZING BACKED WITH INSULATION

REV	DATE	DRAWN	REV'D	APP'D	DESCRIPTION
F	20.02.20	LH	WB		SECTION 4.55 MODIFICATION ISSUE
E	14.02.20	LH	WB		ISSUED FOR CCA
D	03.02.20	LH	WB		SECTION 4.55 MODIFICATION ISSUE
C	04.12.19	BA	WB		UPDATES TO FACADE - EAST ELEVATION BANDING DETAIL UPDATE & COLOURBACK GLASS REVISED
B	08.11.19	BA	WB		GENERAL UPDATES
A	27.09.19	BA	WB		ISSUE FOR CONSTRUCTION
Z1	03.09.19	BA	WB		ELEVATIONS & DETAILS UPDATE LOUVRES / WINDOW TAGS ADDED & GENERAL UPDATES
20	26.06.19	LH	WB		ISSUE FOR CROWN CERTIFICATE 3
19	03.04.19	LH	WB		DRAFT FACADE PACKAGE
18	22.02.19	BY	WB		DIMENSIONS ADDED & FACADE JOINTS ADDED - ISSUED FOR COORDINATION



LEVEL 7, 177 PACIFIC HIGHWAY  
NORTH SYDNEY  
NSW 2060  
AUSTRALIA

TEL: +61 2 9628 2100  
FAX: +61 2 9628 2210  
WEB: jacobs.com

PROJECT  
**CONCORD HOSPITAL  
REDEVELOPMENT STAGE 1**  
HOSPITAL ROAD  
CONCORD NSW 2139

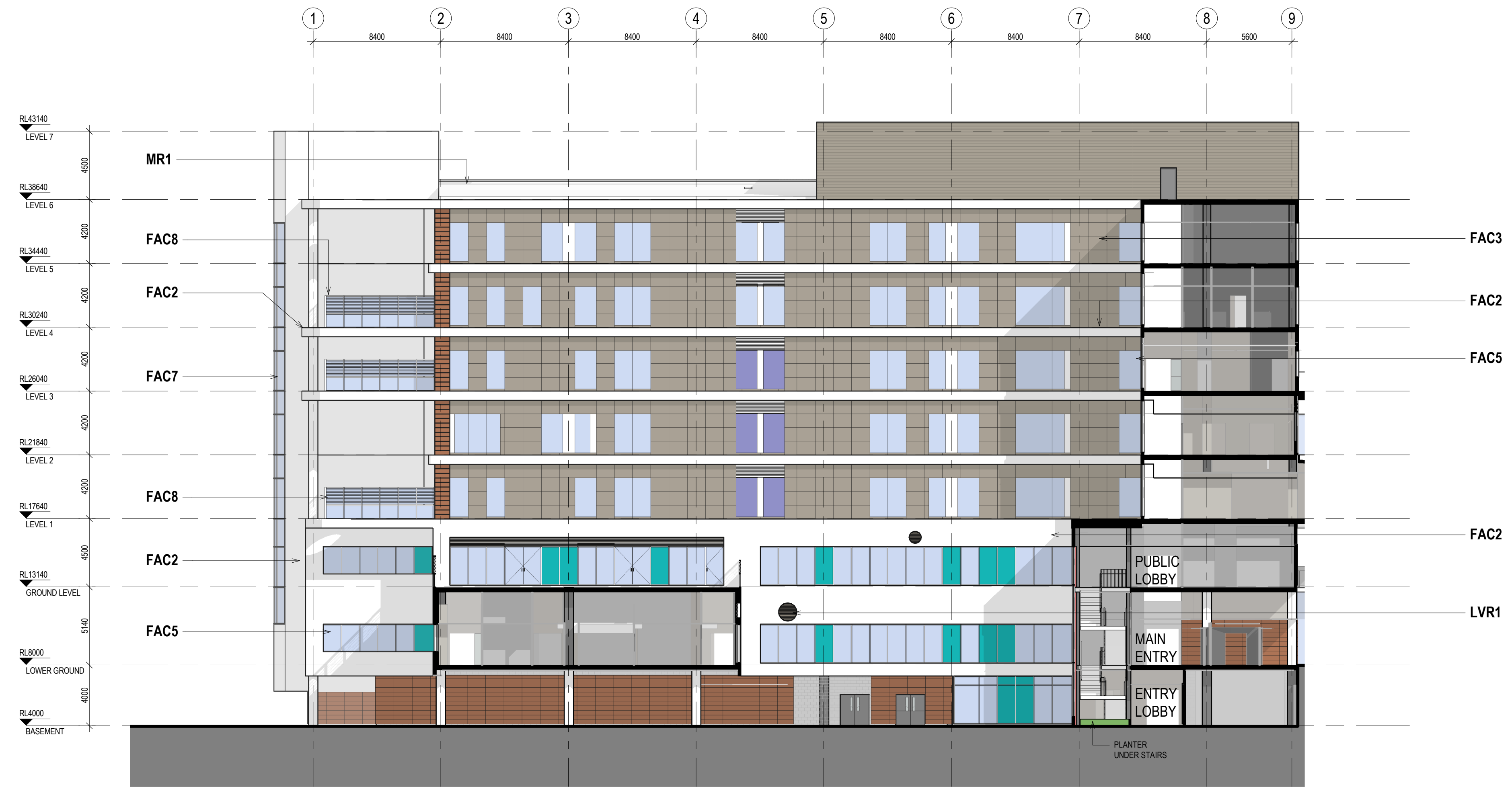
TITLE  
**ELEVATION - IPU 1 EAST & IPU 2  
WEST**

**FOR CERTIFICATION**

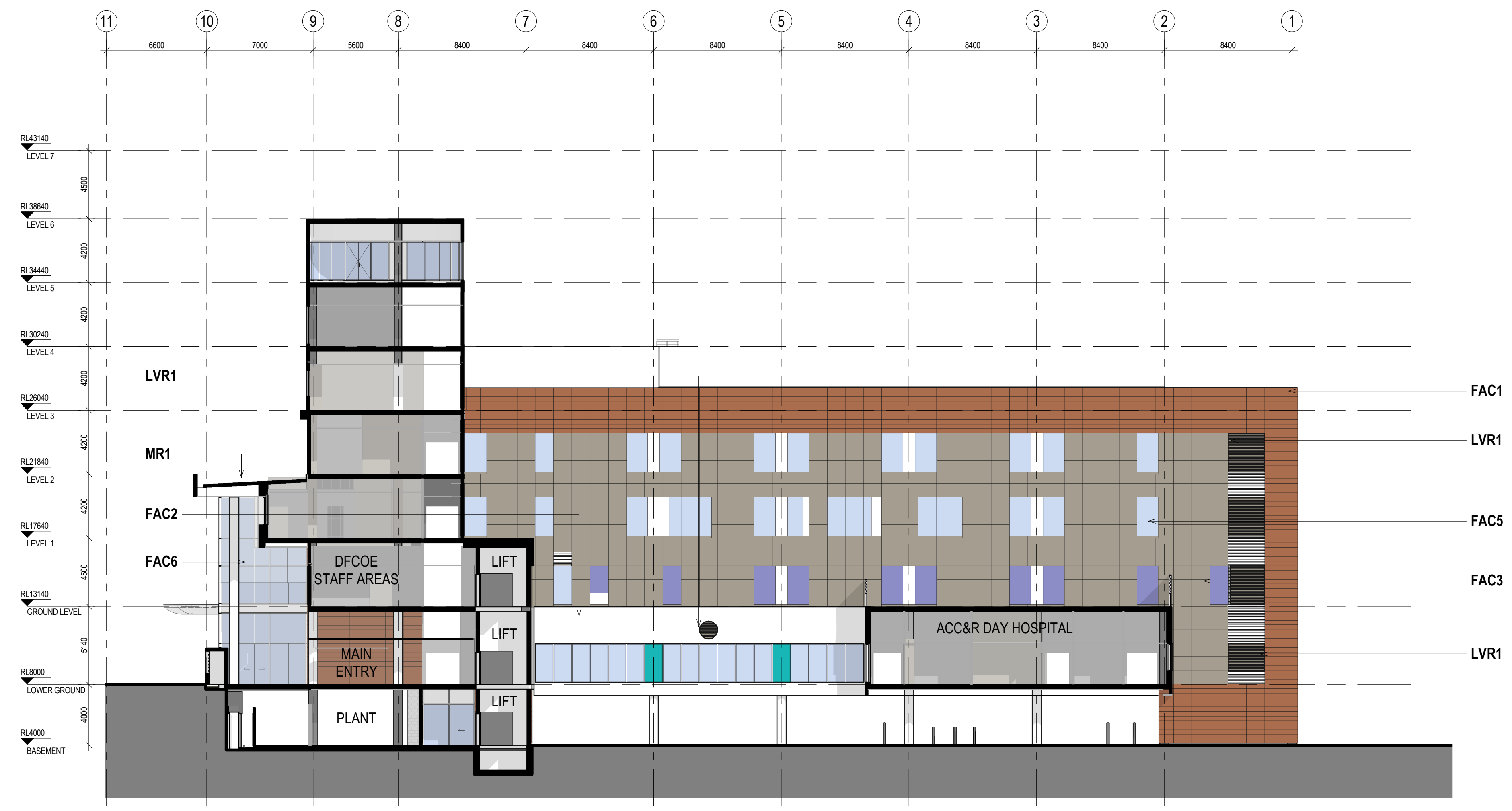
DRAWN MW/BY	DRAWING CHECK PC/WB
DESIGNED	DESIGN REVIEW CY
AC/DG	
REVIEWED	DATE
APPROVED	DATE

SCALE  
1:200 @ B1

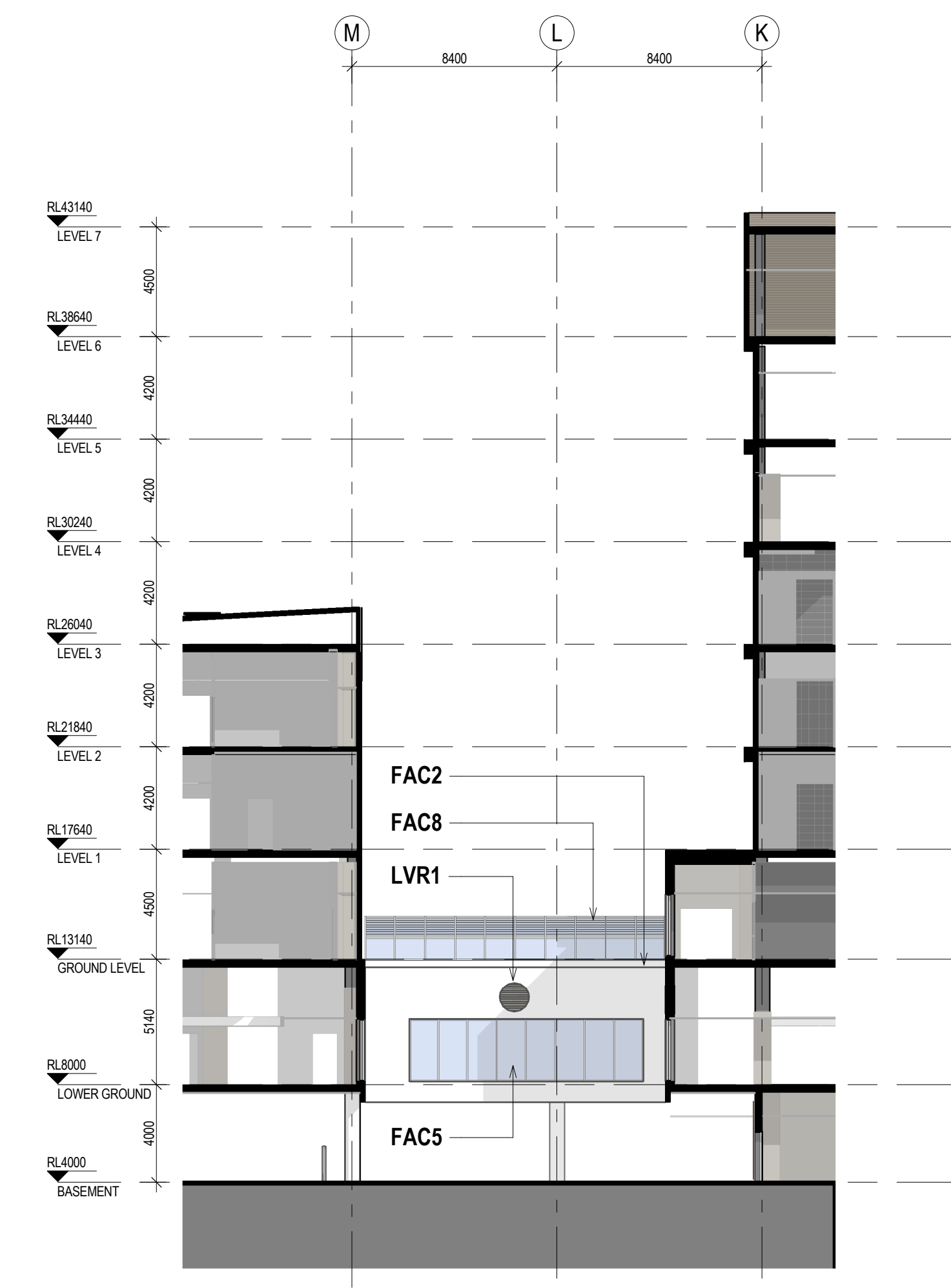
PROJECT No. IA064700 DRAWING No. NEWB-AR-DRG-7003 REV F



1 IPU 2 - EAST ELEVATION  
15B2 1:200



2 IPU 3 - WEST ELEVATION  
15B2 1:200

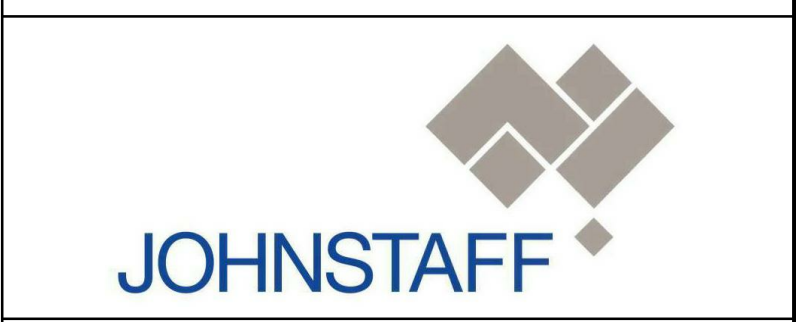
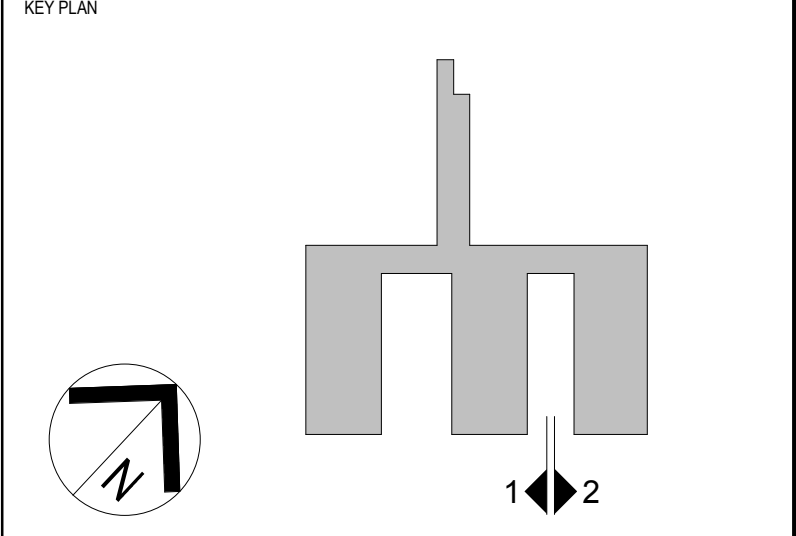


3 IPU 3 - NORTH ELEVATION  
02 1:200

NOTES:  
TO BE READ IN CONJUNCTION WITH SERVICES, STRUCTURAL & CIVIL DOCUMENTATION. ANY DISCREPANCY TO BE BROUGHT TO THE ATTENTION OF JACOBS.

- ELEVATION LEGEND:**
- FAC1 TERRACOTTA CLADDING
  - FAC2 ACRYLIC RENDER FACADE SYSTEM (STO)
  - FAC3 ALUMINIUM NON-COMPOSITE CLADDING
  - FAC5 FRAMED GLAZING (WHITE / TURQUOISE / GREY DENOTES COLOURBACK PANEL)
  - FAC6 CURTAIN WALL GLAZING, EXTRUDED ALUMINIUM FRAME (WHITE DENOTES COLOURBACK PANEL)
  - FAC7 CURTAIN WALL GLAZING, EXTRUDED ALUMINIUM FRAME (WHITE DENOTES COLOURBACK PANEL)
  - FAC8 CURTAIN WALL GLAZING, EXTRUDED ALUMINIUM FRAME (WHITE DENOTES COLOURBACK PANEL)
  - FAC9 FRAMELESS FIXED GLAZING
  - FAC10 METAL SHEET CLADDING (COLORBOND)
  - FR1 FLAT ROOF, MEMBRANE WITH SELECT PAVERS/BALLAST
  - MR1 METAL ROOF SHEETING WITH 100mm INSULATION ROOF RAISERS
  - LVR1 HORIZONTAL LOUVRES

REV	DATE	ISSUED BY	APPD	AMENDMENT
14	13.07.18	BY WB		ISSUED FOR COORDINATION
13	22.06.18	BY WB		MAIN WORKS 70% SD ISSUE
12	12.04.18	BY WB		ISSUED FOR SSQA
11	29.03.18	MW/EF/ST/MS/AY/LVD	WB	SCHEMATIC DESIGN ISSUE
10	16.03.18	MW/EF/ST/MS/AY/LVD	WB	SCHEMATIC DESIGN DRAFT ISSUE
9	23.02.18	MW/EF/ST/MS/AY/LVD	WB	MAIN WORKS 70% SD ISSUE
8	10.11.17	GA	CY	COMBINED STAGE 1A & 1B UPDATE
7	15.02.17	GA	CY	SCHEME DESIGN UPDATE
6	01.07.16	GA	CY	100% SCHEME DESIGN FINAL ISSUE
5	17.06.16	JS	CY	100% SCHEME DESIGN ISSUE
4	10.06.16	AF	CY	SCHEME DESIGN DRAFT ISSUE
3	10.06.16	JS	CY	SCHEME DESIGN DRAFT ISSUE



LEVEL 7, 177 PACIFIC HIGHWAY  
NORTH SYDNEY  
NSW 2060  
AUSTRALIA

TEL: +61 2 9528 2100  
FAX: +61 2 9528 2010  
WEB: jacobson.com

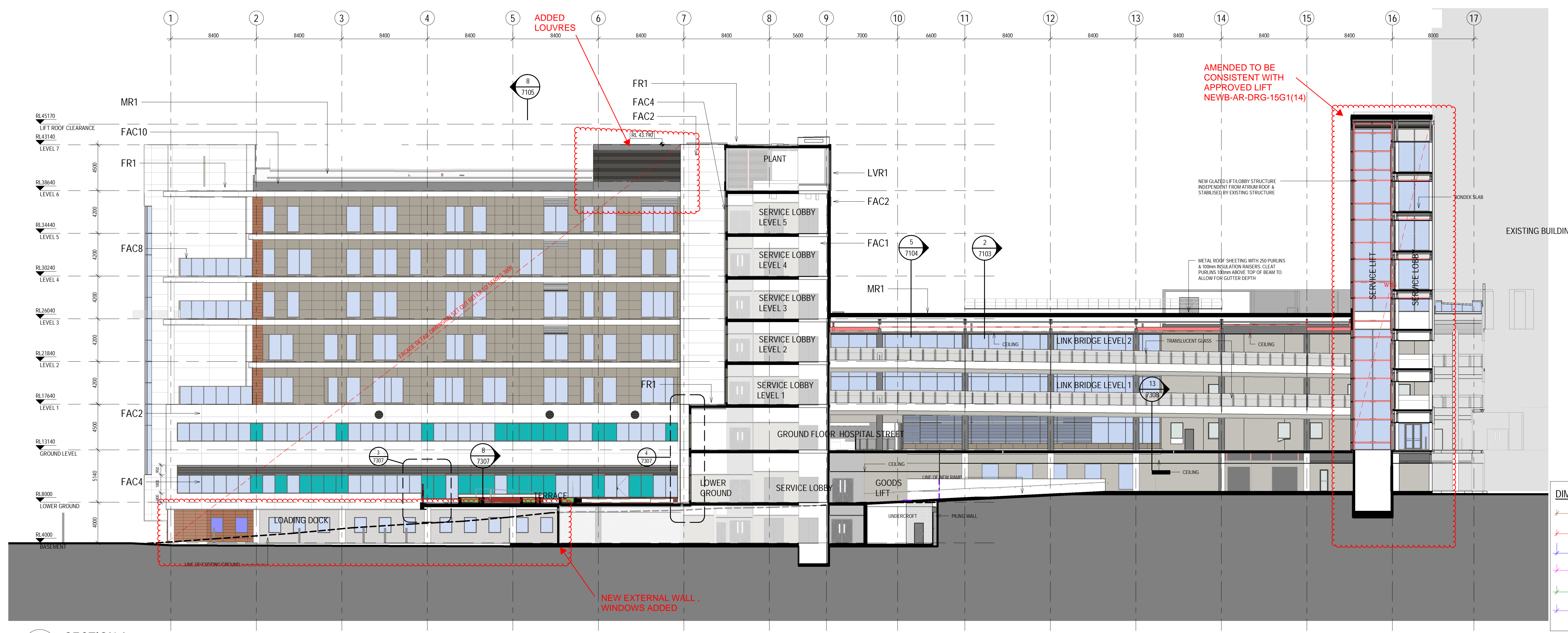
PROJECT  
**CONCORD HOSPITAL REDEVELOPMENT STAGE 1**  
HOSPITAL ROAD  
CONCORD NSW 2139

TITLE  
**ELEVATION - IPU 2 EAST & IPU 3 WEST**

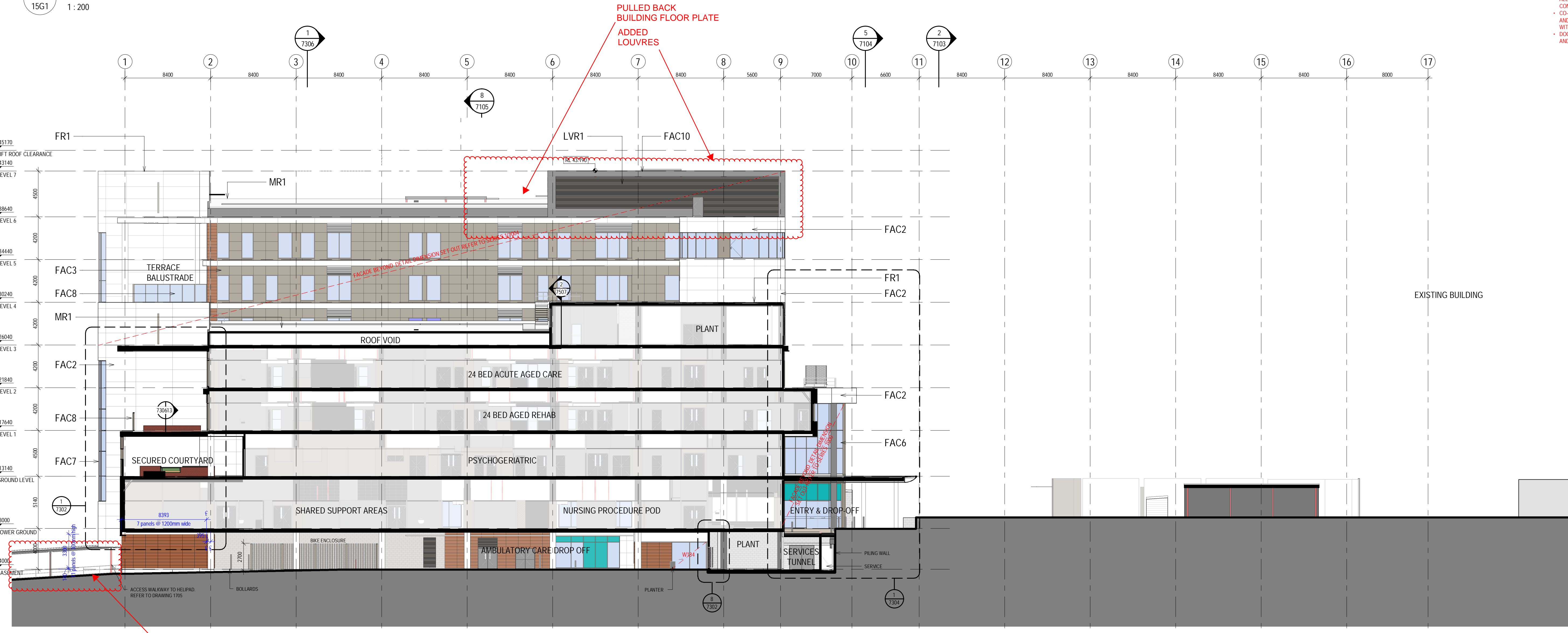
DRAWING STATUS

**DESIGN DEVELOPMENT**

DRAWN MW/BY	DRAWING CHECK PC/WB
DESIGNED AC/DG	DESIGN REVIEW CY
REVIEWED	DATE
APPROVED	DATE
SCALE 1:200	
PROJECT NO. IA064700	DRAWING NO. NEWB-AR-DRG-7004
REV	REV



1 SECTION A  
15G1 1:200



2 SECTION B  
15B2 1:200

**NOTES:**  
TO BE READ IN CONJUNCTION WITH SERVICES, STRUCTURAL & CIVIL DOCUMENTATION. ANY DISCREPANCY TO BE BROUGHT TO THE ATTENTION OF JACOBS.

**ELEVATION LEGEND:**

- FAC1 TERRACOTTA CLADDING
- FAC2 REINFORCED CONCRETE CLADDING (FIBRE C)
- FAC3 ALUMINIUM SOLID CLADDING
- FAC4 FRAMED GLAZING (WHITE/GREEN DENOTES COLOURBACK PANEL)
- FAC5 CURTAIN WALL GLAZING (PROPRIETARY SYSTEM)
- FAC6 CURTAIN WALL WITH GLAZING ALUMINIUM CLIPS & RH'S STEEL MULLIONS AS PER STRUCTURAL ENGINEERS (WHITE DENOTES COLOURBACK PANEL)
- FAC7 CURTAIN WALL (CURVED TRANSOMS + GLAZING VERTICALS - SILICONE/ UNCAPPED HORIZONTALS - CAPPED)
- FAC8 FIXED GLASS BALUSTRADE SCREEN
- FAC9 FRAMELESS FIXED GLAZING
- FAC10 METAL SHEET CLADDING (COLOURBOND)
- FAC11 EXPOSED FLAT FACE MASONRY BLOCKWORK (PORCELAIN COLOURED)
- FAC12 CEMENTITIOUS RENDER FACADE SYSTEM
- FAC13 OFF FORM CONCRETE SEALER
- FR1 FLAT ROOF, MEMBRANE WITH SELECT PAVERS/BALLAST
- MR1 METAL ROOF SHEETING WITH 100mm INSULATION ROOF RAISERS
- LVR1 HORIZONTAL LOUVRES
- LVR2 ACTUATED POWER GLASS LOUVRES
- LVR3 VERTICAL LOUVRES
- LVR4 400mm DEEP ACOUSTIC LOUVRES, HORIZONTAL

**GLAZING LEGEND:**

- GLZ1 STANDARD CLEAR SINGLE GLAZED IGUS
- GLZ2 CLEAR SINGLE GLAZED IGUS, WITH JOCKEY SASH & INTEGRAL BLINDS
- GLZ3 TRANSLUCENT SINGLE-GLAZED IGUS
- GLZ4 WHITE OPAQUE COLOURBACK SINGLE GLAZING BACKED WITH INSULATION
- GLZ5 GREEN OPAQUE COLOURBACK SINGLE GLAZING BACKED WITH INSULATION
- GLZ6 CLEAR SINGLE GLAZING
- GLZ7 STANDARD CLEAR DOUBLE GLAZED IGUS
- GLZ8 BROWN OPAQUE COLOURBACK SINGLE GLAZING BACKED WITH INSULATION

**DIMENSION LEGEND:**

- X DIMENSION SET OUT FOR METAL SHEET CLADDING (COLOURBOND) - FAC10
- X DIMENSION SET OUT FOR WINDOW AND LOUVRES
- X DIMENSION SET OUT FOR TERRACOTTA CLADDING - FAC1
- X DIMENSION SET OUT FOR ALUMINIUM NON-COMPOSITE CLADDING - FAC3
- X REINFORCED CONCRETE CLADDING (FIBRE C) - FAC2

**NOTE 1 - REFER TO CURVED FACADE SETOUT PLAN DETAILS FOR FACADE AND WINDOWS SERIES 7600**

REV	DATE	LOGAN	REV'D	APPR'D	AMENDMENT
P	20.02.20	LH	WB		SECTION 4.55 MODIFICATION ISSUE
E	14.02.20	LH	WB		ISSUED FOR C204
D	03.02.20	LH	WB		SECTION 4.55 MODIFICATION ISSUE
C	04.12.19	BA	WB		UPDATES TO FACADE - EAST ELEVATION BANDING DETAIL UPDATE & COLOURBACK GLASS REVISED
B	27.09.19	BA	WB		ISSUE FOR CONSTRUCTION
A	24.07.19	LH	WB		IFC ATRIM PACKAGE
15	26.06.19	LH	WB		ISSUE FOR CROWN CERTIFICATE 3
14	03.04.19	LH	WB		DRAFT FACADE PACKAGE
13	13.09.18	JACOBS	WB		TENDER ISSUE
12	31.08.18	JACOBS	WB		DESIGN DEVELOPMENT
11	13.07.18	BY	WB		ISSUED FOR COORDINATION
10	22.06.18	BY	WB		MAIN WORKS 70% DD ISSUE
V	12.04.18	WB	WB		ISSUED FOR SDA

ALL DRAWINGS TO BE PRINTED AND READ IN COLOUR  
ALL DIMENSION TO BE VERIFICATION ON SITE PRIOR TO CONSTRUCTION  
COORDINATION AND ADJUSTMENT OF FINAL WINDOW AND DOOR MULLION LOCATIONS TO BE CO-ORDINATED WITH FINAL INTERNAL FITOUT  
DOOR SIZES TO BE READ WITH CONSTRUCTION PLANS AND DOOR SCHEDULE

CLIENT

PROJECT  
**CONCORD HOSPITAL REDEVELOPMENT STAGE 1**  
HOSPITAL ROAD  
CONCORD NSW 2139

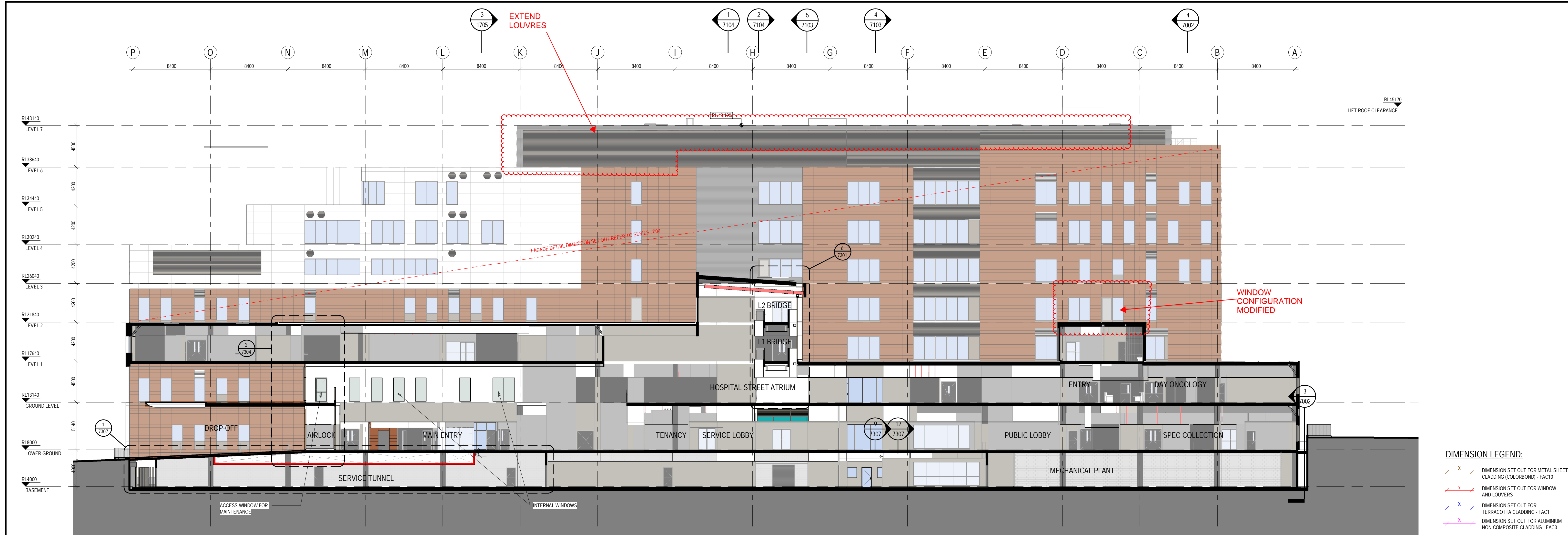
TITLE  
**SECTION SHEET 1**

DRAWING STATUS  
**FOR CERTIFICATION**

DRAWN MW/BY	DRAWING CHECK PC/WB
DESIGNED AC/DG	DESIGN REVIEW CY
REVIEWED	DATE
APPROVED	DATE

SCALE  
1:200

PROJECT No.	DRAWING No.	REV
IA064700	NEWB-AR-DRG-7101	F



1 LONGITUDINAL SECTION A  
15B2 1:200

**NOTES:**  
TO BE READ IN CONJUNCTION WITH SERVICES, STRUCTURAL & CIVIL DOCUMENTATION. ANY DISCREPANCY TO BE BROUGHT TO THE ATTENTION OF JACOBS.

**ELEVATION LEGEND:**

- FAC1 TERRACOTTA CLADDING
- FAC2 REINFORCED CONCRETE CLADDING (FIBRE C)
- FAC3 ALUMINIUM SOLID CLADDING
- FAC4 FRAMED GLAZING (WHITE/GREEN DENOTES COLOURBACK PANEL)
- FAC5 CURTAIN WALL GLAZING (PROPRIETARY SYSTEM)
- FAC6 CURTAIN WALL WITH GLAZING ALUMINIUM CLIPS & VHS STEEL MULLIONS AS PER STRUCTURAL ENGINEER (WHITE DENOTES COLOURBACK PANEL)
- FAC7 CURTAIN WALL (CURVED TRANSOMS - GLAZING VERTICALS - SILICONE/UNCAPPED HORIZONTALS - CAPPED)
- FAC8 FIXED GLASS BALUSTRADE SCREEN
- FAC9 FRAMELESS FIXED GLAZING
- FAC10 METAL SHEET CLADDING (COLOURBOND)
- FAC11 EXPOSED FLAT FACE MASONRY BLOCKWORK (PORCELAIN COLOURED)
- FAC12 CEMENTITIOUS RENDER FACADE SYSTEM
- FAC13 OFF FORM CONCRETE SEALER
- FR1 FLAT ROOF MEMBRANE WITH SELECT PAVERS/BALLAST
- MR1 METAL ROOF SHEETING WITH 100mm INSULATION ROOF RAISERS
- LVR1 HORIZONTAL LOUVRES
- LVR2 ACTUATED POWER GLASS LOUVRES
- LVR3 VERTICAL LOUVRES
- LVR4 400mm DEEP ACOUSTIC LOUVRES, HORIZONTAL

**GLAZING LEGEND:**

- GLZ1 STANDARD CLEAR SINGLE GLAZED IGUs
- GLZ2 CLEAR SINGLE GLAZED IGUs WITH JOCKEY SASH & INTEGRAL BLINDS
- GLZ3 TRANSLUCENT SINGLE-GLAZED IGUs
- GLZ4 WHITE OPAQUE COLOURBACK SINGLE GLAZING BACKED WITH INSULATION
- GLZ5 GREEN OPAQUE COLOURBACK SINGLE GLAZING BACKED WITH INSULATION
- GLZ6 CLEAR SINGLE GLAZING
- GLZ7 STANDARD CLEAR DOUBLE GLAZED IGUs
- GLZ8 BRONZE OPAQUE COLOURBACK SINGLE GLAZING BACKED WITH INSULATION

**DIMENSION LEGEND:**

- Dimension set out for metal sheet cladding (colourbond) - FAC10
- Dimension set out for window and louvers
- Dimension set out for terracotta cladding - FAC1
- Dimension set out for aluminium non-composite cladding - FAC3
- Reinforced concrete cladding (fibre c) - FAC2
- Note 1 - Refer to curved facade setout plan details for facade and windows series 7600

**REVISIONS:**

REV	DATE	ISSUED BY	REVISED BY	APPD	REASON
P	20.02.20	LH	WB		SECTION 4.55 MODIFICATION ISSUE
E	14.02.20	LH	WB		ISSUED FOR C204
D	03.02.20	LH	WB		SECTION 4.55 MODIFICATION ISSUE
C	04.12.19	BA	WB		UPDATES TO FACADE - EAST ELEVATION BANDING DETAIL UPDATE & COLOURBACK GLASS REVISED
B	08.11.19	BA	WB		GENERAL UPDATES
A	27.09.19	BA	WB		ISSUE FOR CONSTRUCTION
16	26.06.19	LH	WB		ISSUE FOR CROWN CERTIFICATE 3
15	03.04.19	LH	WB		DRAFT FACADE PACKAGE
14	13.09.18	JACOBS	WB		TENDER ISSUE
13	31.08.18	JACOBS	WB		DESIGN DEVELOPMENT
12	13.07.18	BY	WB		ISSUED FOR COORDINATION
11	22.06.18	BY	WB		MAIN WORKS 70% DD ISSUE
10	12.04.18	BY	WB		ISSUED FOR SDA

**CLIENT:** NSW GOVERNMENT Health Infrastructure

**ARCHITECT:** JOHNSTAFF

**ENGINEER:** roberts pizzarotti

**PROJECT:** CONCORD HOSPITAL REDEVELOPMENT STAGE 1  
HOSPITAL ROAD CONCORD NSW 2139

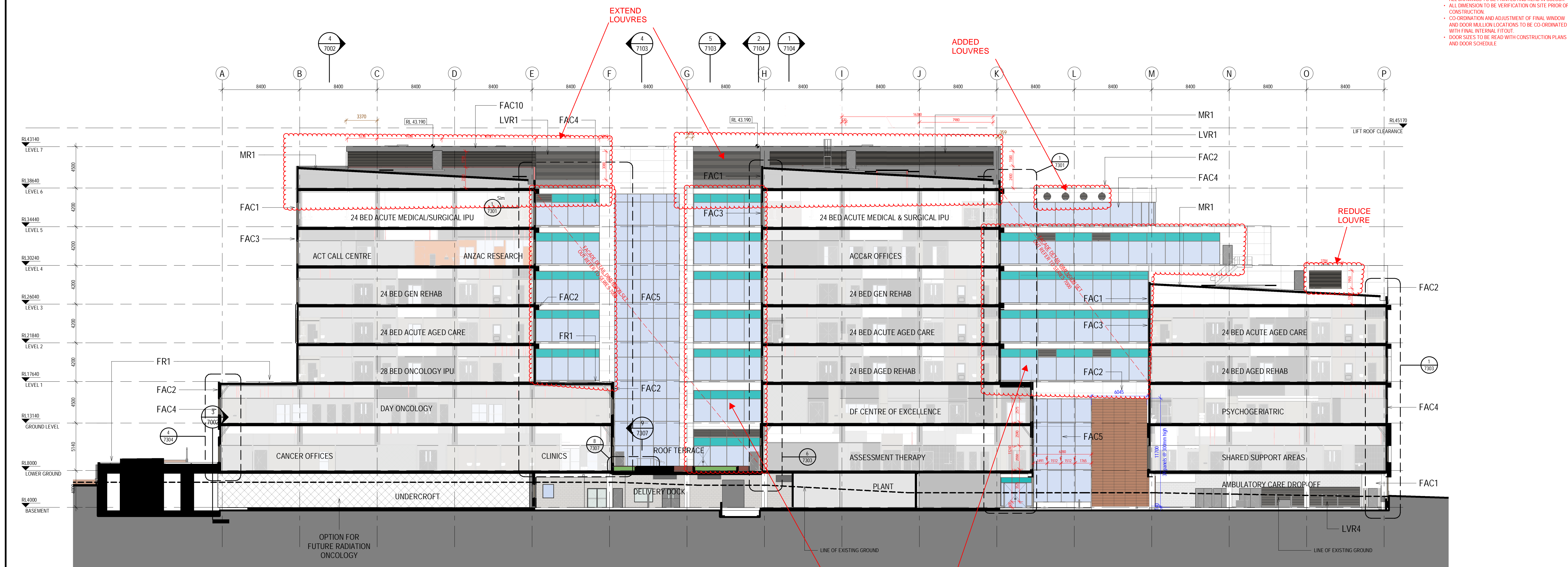
**TITLE:** SECTION SHEET 2

**FOR CERTIFICATION**

DRAWN: MW/BY	CHECKED: PC/WB
DESIGNED: AC/DG	DESIGN REVIEW: CY
REVIEWED:	DATE:
APPROVED:	DATE:

SCALE: 1:200

PROJECT No: IA064700 DRAWING No: NEWB-AR-DRG-7102 REV: F



2 LONGITUDINAL SECTION B  
15B2 1:200

**REVISIONS:**

- All drawings to be printed and read in colour
- All dimension to be verification on site prior of construction
- Coordination and adjustment of final window and door mullion locations to be coordinated with final internal fitout
- Door sizes to be read with construction plans and door schedule

**CLIENT:** NSW GOVERNMENT Health Infrastructure

**ARCHITECT:** JOHNSTAFF

**ENGINEER:** roberts pizzarotti

**PROJECT:** CONCORD HOSPITAL REDEVELOPMENT STAGE 1  
HOSPITAL ROAD CONCORD NSW 2139

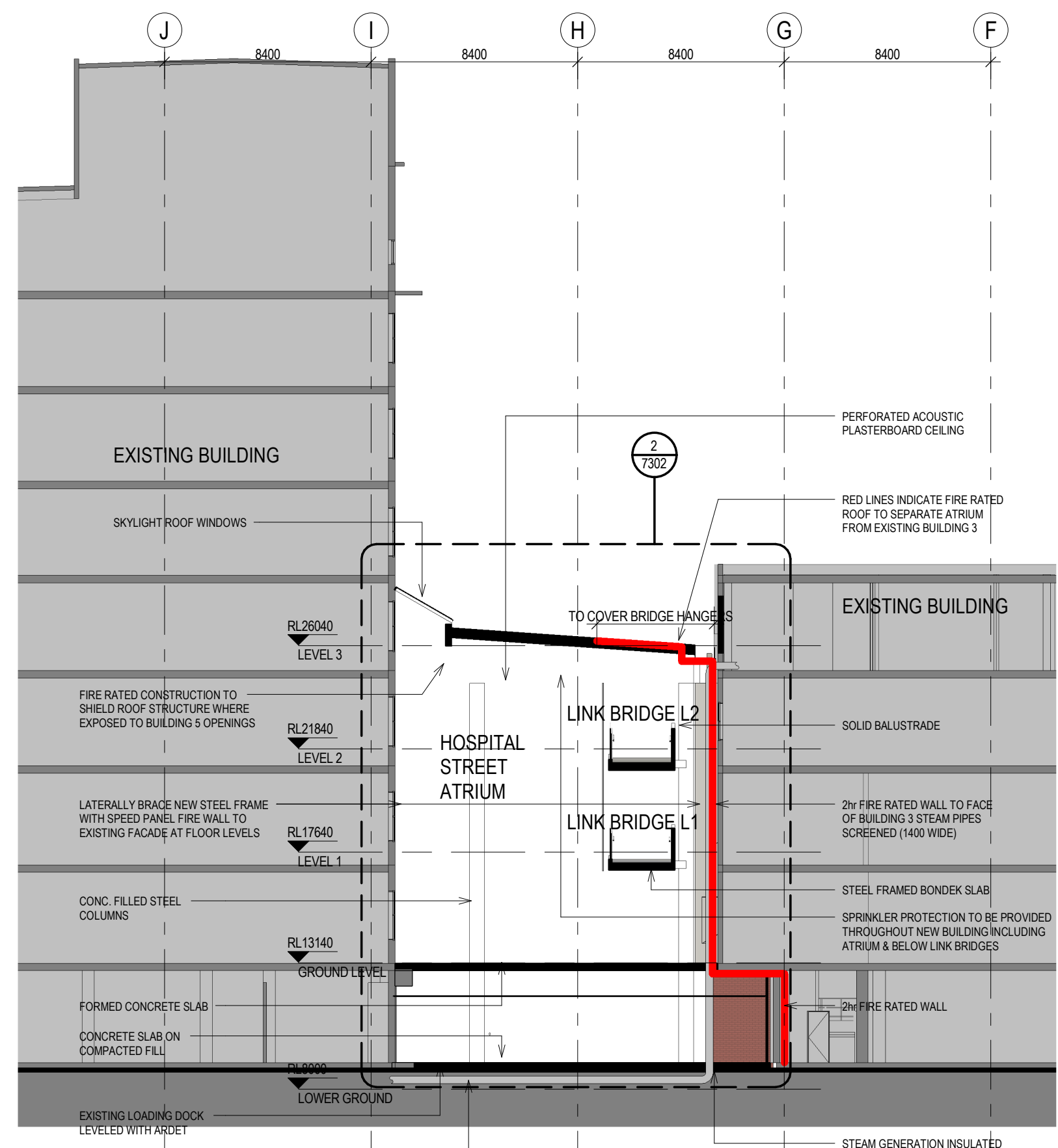
**TITLE:** SECTION SHEET 2

**FOR CERTIFICATION**

DRAWN: MW/BY	CHECKED: PC/WB
DESIGNED: AC/DG	DESIGN REVIEW: CY
REVIEWED:	DATE:
APPROVED:	DATE:

SCALE: 1:200

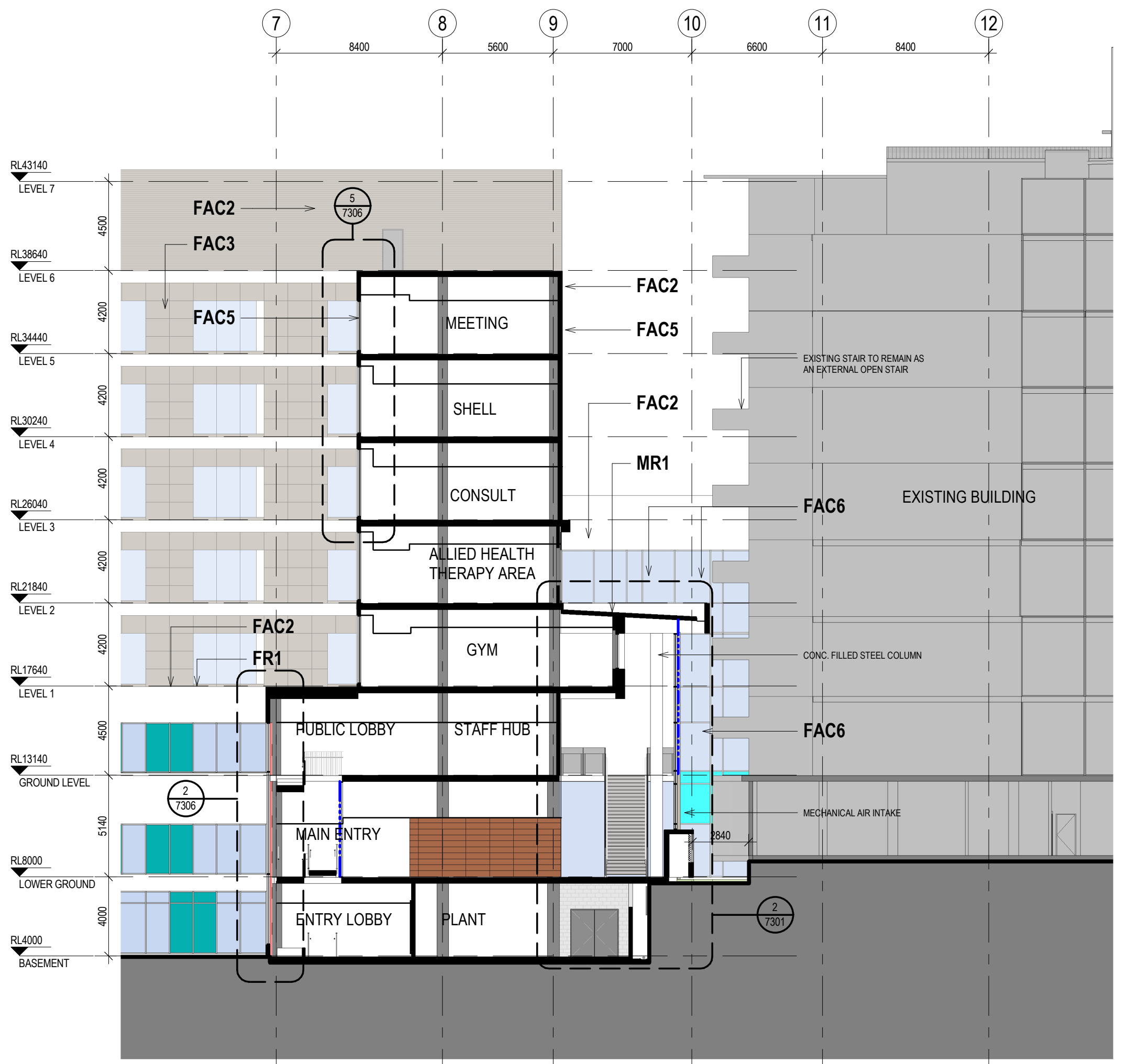
PROJECT No: IA064700 DRAWING No: NEWB-AR-DRG-7102 REV: F



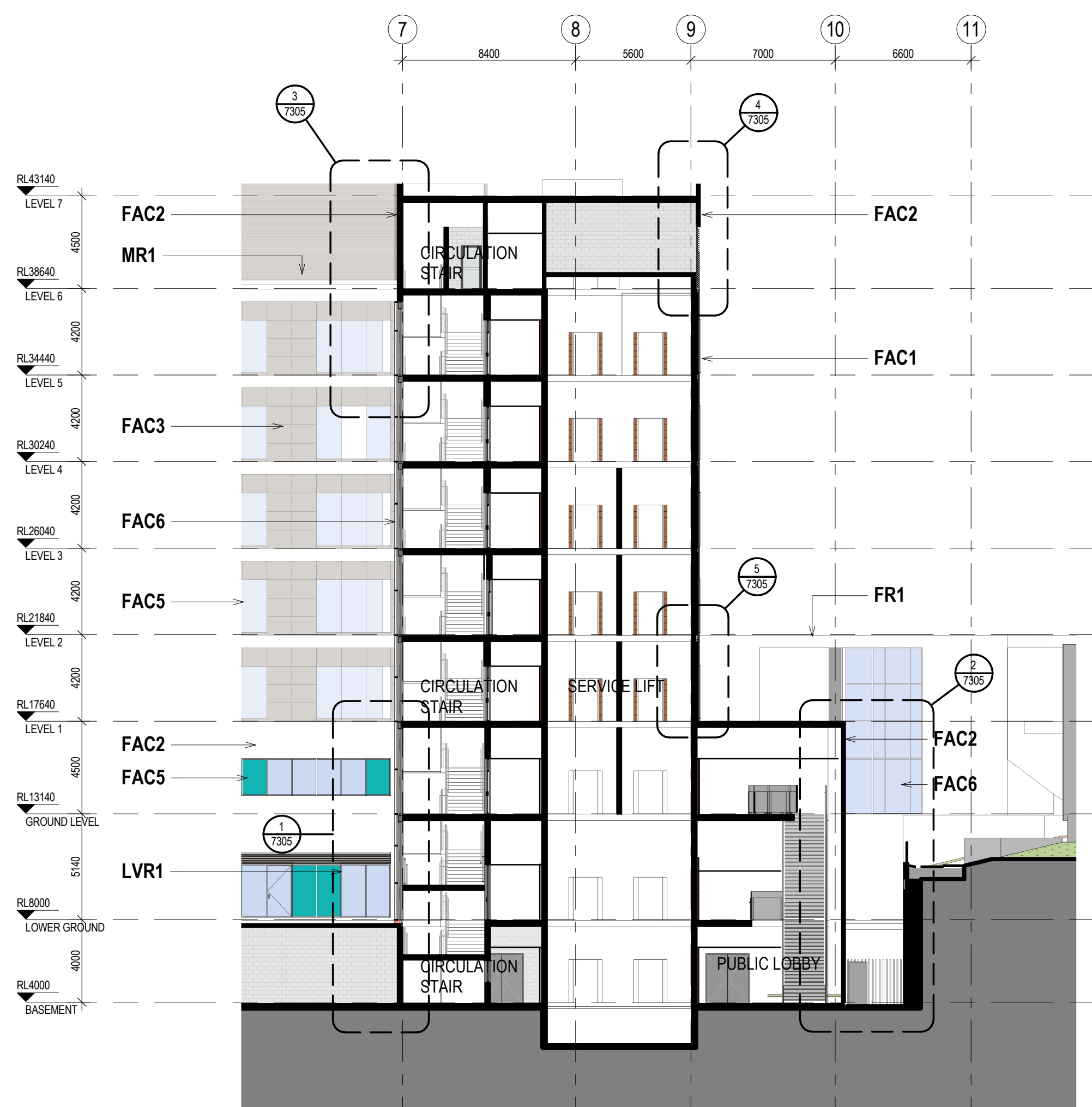
1 SE\_1 - Atrium  
15G1 1:200



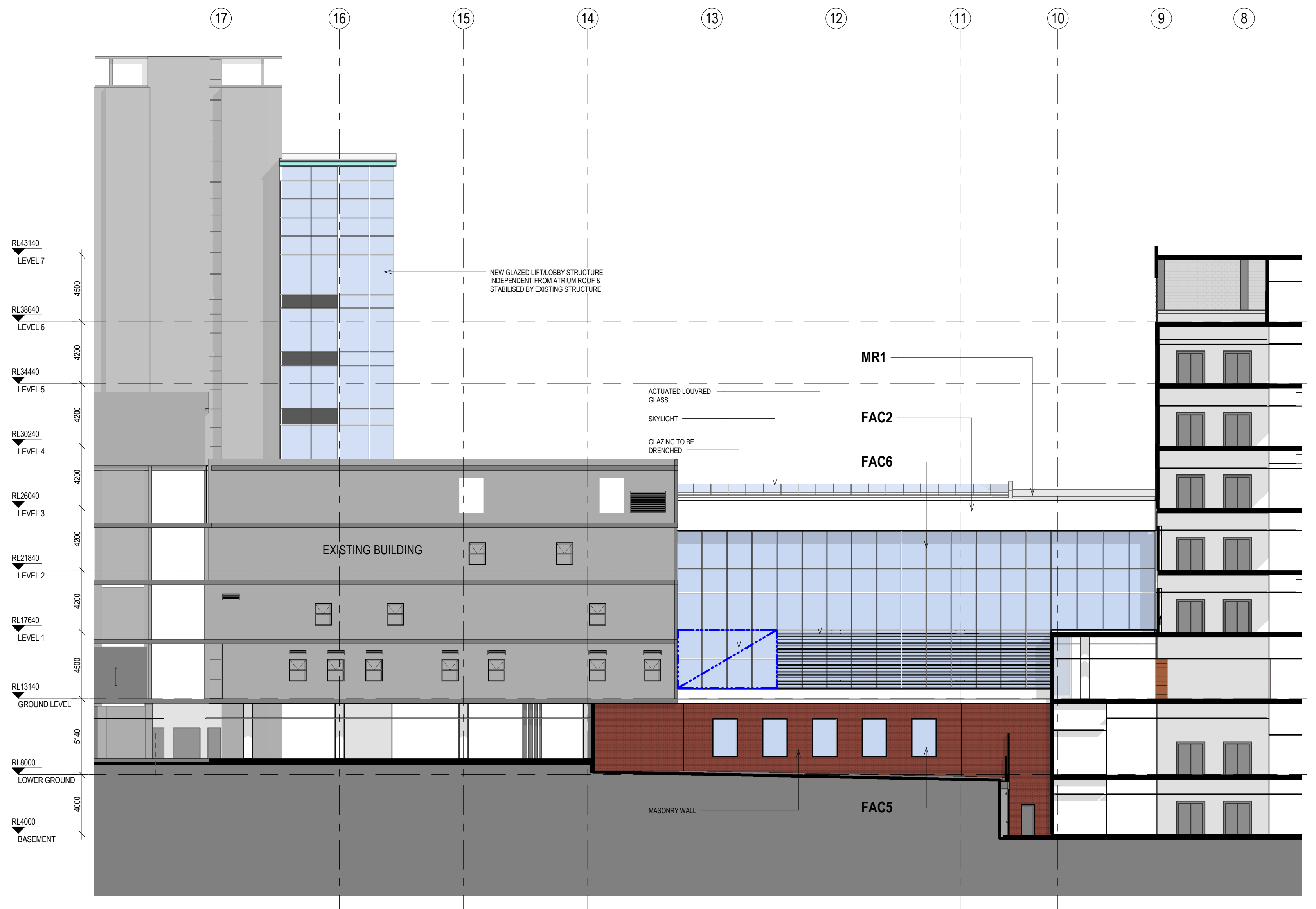
2 SE\_2 - Atrium  
15B2 1:200



3 SE\_6 - Atrium  
15B2 1:200



4 SE\_7 - Atrium  
15B2 1:200



5 SE\_8 - Atrium  
15B2 1:200

NOTES:  
TO BE READ IN CONJUNCTION WITH SERVICES, STRUCTURAL & CIVIL DOCUMENTATION. ANY DISCREPANCY TO BE BROUGHT TO THE ATTENTION OF JACOBS.

- ELEVATION LEGEND:**
- FAC1 TERRACOTTA CLADDING
  - FAC2 ACRYLIC RENDER FACADE SYSTEM (STO)
  - FAC3 ALUMINIUM NON-COMPOSITE CLADDING
  - FAC5 FRAMED GLAZING (WHITE / TURQUOISE / GREY DENOTES COLOURBACK PANEL)
  - FAC6 CURTAIN WALL GLAZING, EXTRUDED ALUMINIUM FRAME (WHITE DENOTES COLOURBACK PANEL)
  - FAC7 CURTAIN WALL (CURVED TRANSOMS + GLAZING) VERTICALS: SILICONE/UNCAPPED HORIZONTALS: CAPPED
  - FAC8 FIXED GLASS BALUSTRADE SCREEN WITH HIGH LEVEL CLEAR GLASS OPERABLE LOUVRES
  - FAC9 FRAMELESS FIXED GLAZING
  - FAC10 METAL SHEET CLADDING (COLORBOND)
  - FR1 FLAT ROOF, MEMBRANE WITH SELECT PAVERS/BALLAST
  - MR1 METAL ROOF SHEETING WITH 100mm INSULATION ROOF RAISERS
  - LVR1 HORIZONTAL LOUVRES

REV	DATE	BY	APPD	AMENDMENT
6	13.07.18	BY	WB	ISSUED FOR COORDINATION
5	22.06.18	BY	WB	MAIN WORKS 70% DD ISSUE
4	12.04.18	BY	WB	ISSUED FOR SSQA
3	29.03.18	MW/EF/ BY/WHS	WB	SCHEMATIC DESIGN ISSUE
2	16.03.18	MW	WB	SCHEMATIC DESIGN DRAFT ISSUE
1	23.02.18	MW/MR/ BY	WB	MAIN WORK 70% SD ISSUE

KEY PLAN



LEVEL 7, 177 PACIFIC HIGHWAY  
NORTH STONEY  
NSW 2139  
AUSTRALIA

TEL: +61 2 9628 2100  
FAX: +61 2 9628 2210  
WEB: jacobs.com

PROJECT  
**CONCORD HOSPITAL REDEVELOPMENT STAGE 1**

HOSPITAL ROAD  
CONCORD NSW 2139

TITLE  
**SECTION SHEET 3**

DRAWING STATUS  
**DESIGN DEVELOPMENT**

DRAWN MW/BY	DRAWING CHECK PC/WB
DESIGNED AC/DG	DESIGN REVIEW CY
REVIEWED	DATE

APPROVED	DATE
----------	------

SCALE  
**1:200**

PROJECT NO. IA064700	DRAWING NO. NEWB-AR-DRG-7103	REV 6
-------------------------	---------------------------------	----------





Figure 20 – Entry to Cancer Centre

### 3.9 Material Selection

#### 3.9.1 Material Selection Criteria

Material selection has been made using the following criteria:

- Durability and Maintenance
- Ease of Construction
- Sustainability

The project aspires to achieve the equivalent of a 4 Star Green Star rating and will include and maximise green initiatives where possible and appropriate. Where cost effective, initiatives have been considered across the following Green Star categories:

- Management
- Indoor Environment Quality
- Energy
- Transport
- Water
- Materials
- Land use and Ecology
- Emissions



Figure 21 – External facade materials

#### 3.9.2 Exterior Materials

The material selection and architectural expression of the facades is based on the design of the Multiblock (refer Section 4.3, Architectural Intent).

The Multiblock has warm rich orange/red brickwork contrasting with smooth plain white and cream surfaces, and small highlights of aqua green. The windows have prominent white mullions and transom bars.

The principle cladding materials proposed for the façades of the new building are:

- Natural Terracotta Panels
- Reinforced Panelize Concrete (Fiber C)
- Solid Aluminium Cladding Panels
- Clear and Colourback Glazing

Lightweight terracotta panels (1200mm wide x 300mm high x 16mm thick) are a contemporary equivalent to the brickwork of the Multiblock, providing a warm earthy traditional texture that will appear at home both in the suburbs and on the face of a technically innovative facility.