

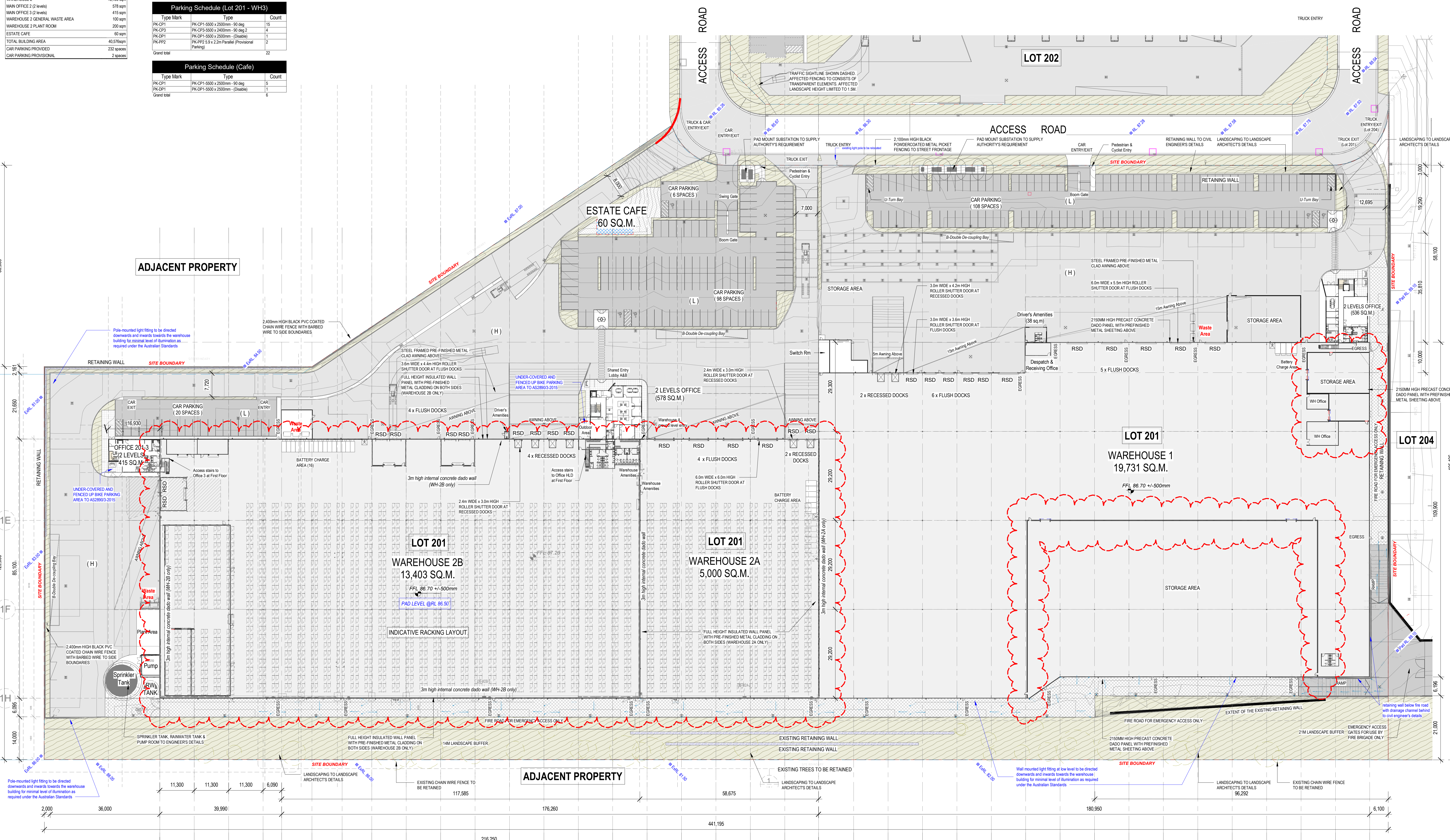
DEVELOPMENT SUMMARY (LOT 201)	
SITE 1 AREA (Warehouse 1)	35,882 sqm
SITE 2 AREA (Warehouse 2 & 3 & Cafe Site)	40,728 sqm
SITE AREA (Lot 201 Total)	77,310 sqm
EFFICIENCY	52.48%
WAREHOUSE 1	19,731 sqm
MAN OFFICE 1 (2 Level)	536 sqm
WAREHOUSE 1 DRIVERS AMENITIES	38 sqm
WAREHOUSE 1 Switch & Compressor Room	140 sqm
WAREHOUSE 1 Storage Area	379 sqm
WAREHOUSE 2	18,403 sqm
MAIN OFFICE 2 (2 levels)	578 sqm
MAIN OFFICE 3 (2 levels)	415 sqm
WAREHOUSE 2 GENERAL WASTE AREA	100 sqm
WAREHOUSE 2 PLANT ROOM	200 sqm
ESTATE CAFE	60 sqm
TOTAL BUILDING AREA	40,576 sqm
CAR PARKING PROVIDED	232 spaces
CAR PARKING PROVISIONAL	2 spaces

Parking Schedule (Lot 201 WH1)		
Type Mark	Type	Count
PK-CP1	PK-CP1-5500 x 2500mm - 90 deg	106
PK-CP1	PK-CP1-5500 x 2500mm - (Diagonal)	2
Grand total		108

Parking Schedule (Lot 201 WH2)		
Type Mark	Type	Count
PK-CP1	PK-CP1-5500 x 2500mm - 90 deg	96
PK-CP1	PK-CP1-5500 x 2500mm - (Diagonal)	2
Grand total		98

Parking Schedule (Lot 201 - WH3)		
Type Mark	Type	Count
PK-CP1	PK-CP1-5500 x 2500mm - 90 deg	15
PK-CP3	PK-CP3-5500 x 2500mm - 90 deg 2	4
PK-CP1	PK-CP1-5500 x 2500mm - (Diagonal)	1
PK-PP2	PK-PP2 5.9 x 2.2m Parallel (Provisional Parking)	2
Grand total		22

Parking Schedule (Cafe)		
Type Mark	Type	Count
PK-CP1	PK-CP1-5500 x 2500mm - 90 deg	5
PK-CP1	PK-CP1-5500 x 2500mm - (Diagonal)	1
Grand total		6



1 Site Facilities Plan (Lot 201)
1:500 @B1



PROJECT MANAGER
PROJECT NUMBER 200226

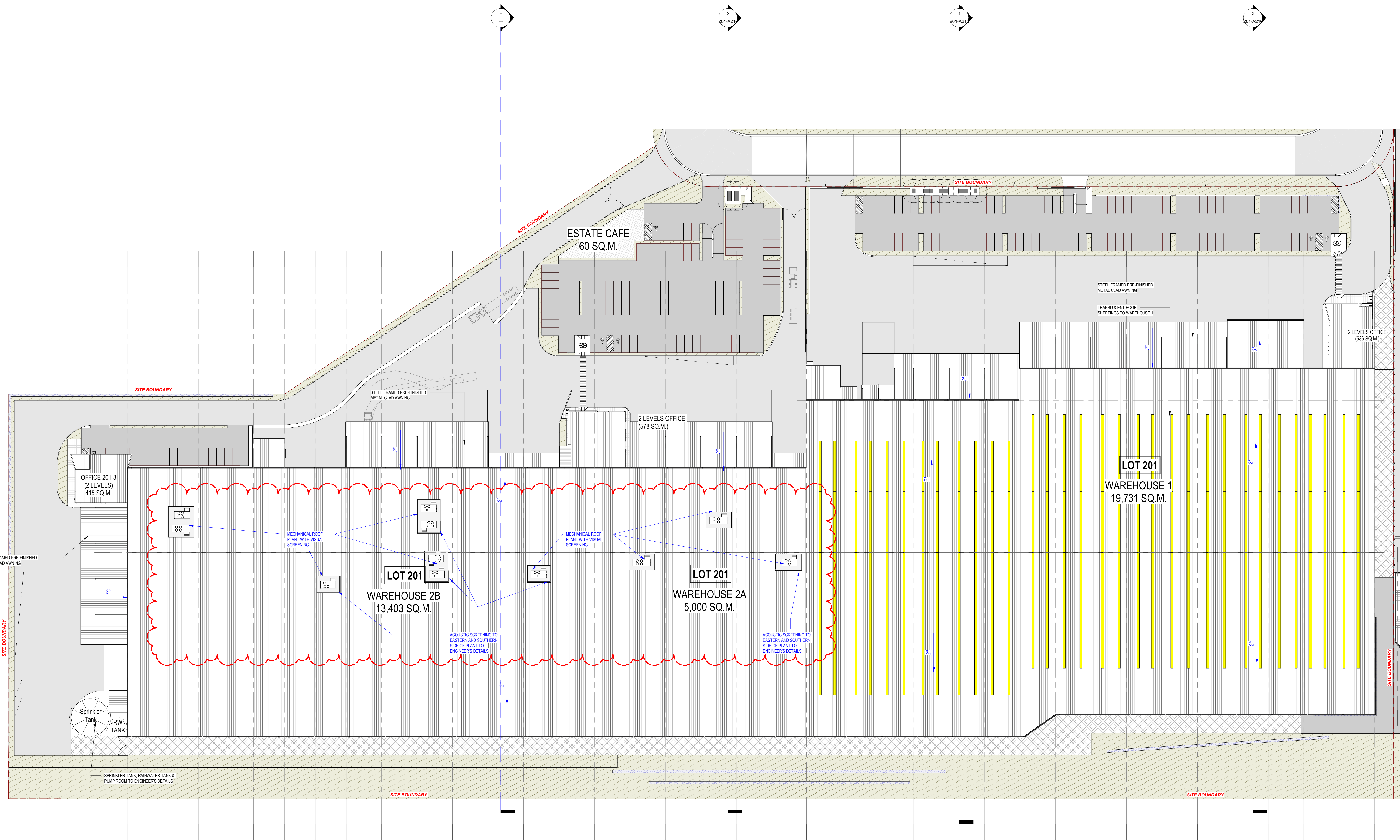
PROJECT ESR HORSLEY LOGISTIC PARK
ADDRESS 327-335 BURLEY ROAD HORSLEY PARK NSW
PROJECT NUMBER 200226

Rev	Description	Date
P21	WH-3 access driveway splay amended to suit traffic movement.	08.07.21
P22	WH1 Tenancy plant fitout added.	30.07.21
P23	Lot 201 - Warehouse 2B & 3 consolidated to 2B. Mechanical roof plant and with screening added.	05.08.21
P24	WH1 internal rooms added.	09.08.21
P25	Warehouse 1 fitout updated.	20.09.21
P26	Racking layout added.	08.10.21

HL Architects Pty Ltd. This drawing is confidential and is subject to copyright. It may not be copied, used, reproduced or transmitted in any way or in any form without the express permission of HL Architects Pty Ltd.

HL Architects Pty Ltd A.C.N. 161 638 320
180 Burley Road, North Sydney NSW 1585
www.hlarchitects.com.au
Suite 51, 9 George St, North Sydney NSW 2157

DEVELOPMENT APPLICATION
DRAWING TITLE LOT 201 SITE & FACILITY PLAN
DRAWING NUMBER 200226 - DA - 201-A100
P26



1 201 Roof plan
201-A200 1:500 @B1

7/10/2021 6:04:17 PM BM 380.027 335 Burley Road, U3 Burley Rd 4



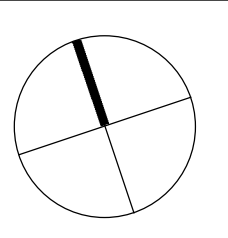
PROJECT MANAGER

PROJECT ESR HORSLEY LOGISTIC PARK
ADDRESS 327-335 BURLEY ROAD
HORSLEY PARK NSW
PROJECT NUMBER 200226

Rev	Description	Date
P1	Lot 201 - Warehouse 2B & 3 consolidated to 2B. Mechanical roof plant and with screening added.	05.08.21
P2	Lot 201 Roof plant platform finalised.	02.09.21
P3	Acoustic screen added to roof plant.	07.10.21

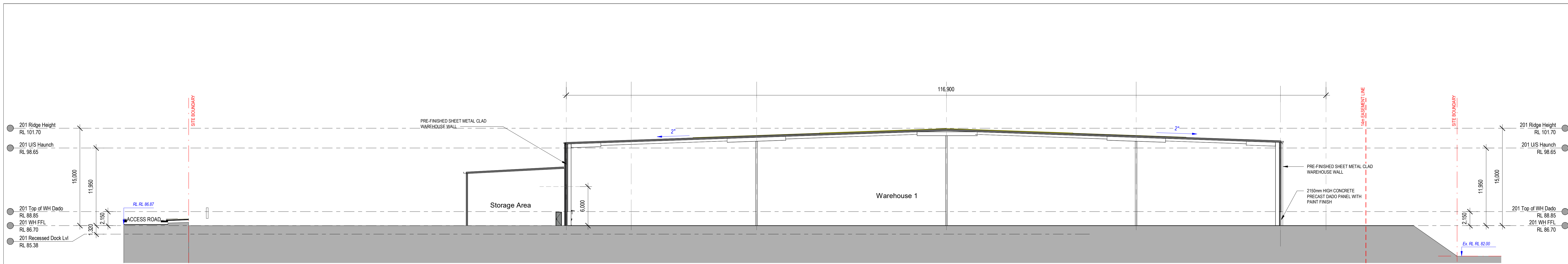
HL Architects Pty Ltd. This drawing is confidential and is subject to copyright. It may not be copied, used, reproduced or transmitted in any way or in any form without the express permission of HL Architects Pty Ltd.
General Notes:
Architectural drawings to be read in conjunction with all other consultants detailed drawings, specifications & reports.
Do not scale this drawing. Verify all dimensions on site.
Refer all discrepancies to HLA before commencing any work.

HL Architects Pty Ltd A.C.N. 161 638 320
nominated architect: RIA, Hong Lau
(Reg No. NSW #1559, QLD #600, TAS #1101)
e admin@hlarchitects.com.au
t 02 9156 9942
m 0424 160 365
www.hlarchitects.com.au
a Suite 51, 9 George St, North Strathfield NSW 2137



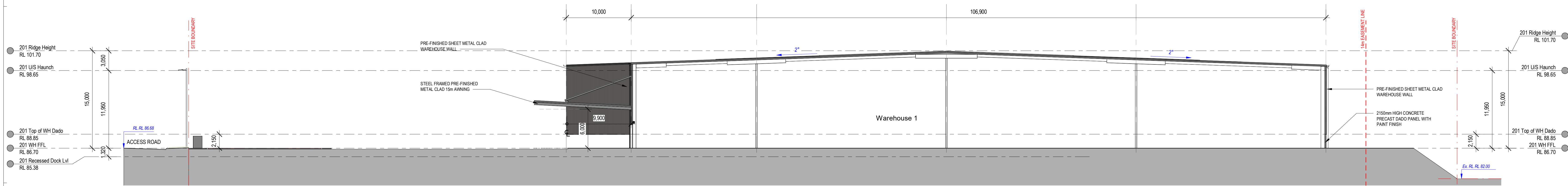
DRAWING TITLE ROOF PLAN
DRAWING NUMBER 200226 - DA - 201-A105
P3

DEVELOPMENT APPLICATION



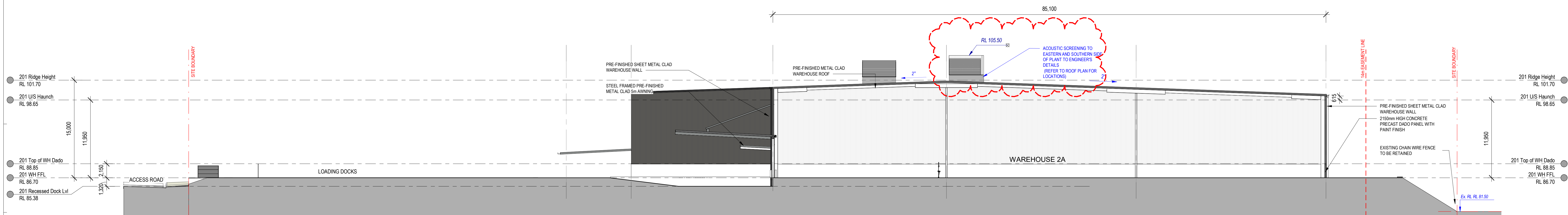
3 Lot 201 Cross Section (WH-1 - Storage Shed)

201-A105 1:250 @B1



1 Lot 201 Cross Section (WH-1 Flush Dock)

201-A105 1:250 @B1



2 Lot 201 Cross Section (WH-2 Recessed Dock)

201-A105 1:250 @B1

7/10/2021 5:45:59 PM BIM 360://227-335-Burley-Road-13-Burley-Road



PROJECT MANAGER

PROJECT ESR HORSLEY LOGISTIC PARK
 ADDRESS 327-335 BURLEY ROAD
 HORSLEY PARK NSW
 PROJECT NUMBER 200226

Rev	Description	Date
P6	RSD sizes updated, WH 1 Storage area added, WH 2A battery charge relocated, Truck egress updated, WH 1 Dock Office layout added, Fence note updated, DP colour to match wall behind, RSD and WH door colour updated.	26.04.21
P7	Lot 201 - Warehouse 2B & 3 consolidated to 2B, Mechanical roof plant and with screening added.	05.08.21
P8	Lot 201 Roof plant platform finalised.	02.09.21
P9	Warehouse 1 fitout updated.	20.09.21
P10	Acoustic screen added to roof plant.	xx.10.21

HL Architects Pty Ltd. This drawing is confidential and is subject to copyright. It may not be copied, used, reproduced or transmitted in any way or in any form without the express permission of HL Architects Pty Ltd.
 General Notes:
 Architectural drawings to be read in conjunction with all other consultants' detailed drawings, specifications & reports.
 Do not scale this drawing. Verify all dimensions on site.
 Refer all discrepancies to HLA before commencing any work.

HL Architects Pty Ltd A.C.N. 161 638 320
 nominated architect: Koi Hong LAU
 (Reg No. NSW #1559, QLD #6005, TAS #1101)
 admin@hlarchitects.com.au
 02 9166 9942
 m 0424 160 365
 www.hlarchitects.com.au
 Suite 53, 5 George St, North Strathfield NSW 2137



DEVELOPMENT APPLICATION

DRAWING TITLE LOT 201 WAREHOUSE SECTIONS
 DRAWING NUMBER 200226 - DA - 201-A210
 ISSUE P10