

**REFERENCES**

DRAWINGS TO BE READ IN CONJUNCTION WITH BUT NOT LIMITED TO ALL STRUCTURAL ENGINEERS, STORMWATER ENGINEERS, LANDSCAPE ARCHITECTS, AND OTHER ASSOCIATED PLANS & REPORTS

REFER TO THE BASIS REPORT FOR ADDITIONAL REQUIREMENTS TO THE ONES NOTED ON THE DRAWINGS.

**NOTES**

ALL DIMENSIONS AND SETOUTS ARE TO BE VERIFIED ON SITE AND ALL OMISSIONS OR ANY DISCREPANCIES TO BE NOTIFIED TO THE ARCHITECT.

FIGURED DIMENSIONS TO BE USED AT ALL TIME.

DO NOT SCALE MEASUREMENTS OFF DRAWINGS.

**LEGEND**

PROPOSED AMENDMENTS

AREA ADDED TO GFA

ADDITIONAL S75W AMENDMENTS 27.05.20:

- NEW ACCESSIBLE PUBLIC BATHROOM ADDED

**REVISIONS**

Rev.	Date	Description
I	27.05.20	General Amendments
H	25.05.20	General Amendments
G	26.02.20	General Amendments
F	27.09.18	General Amendments
E	04.08.17	Additional Information
D	14.07.17	Additional Information
C	04.07.17	Additional Information
B	27.03.17	General Amendments
A	16.02.17	Modification Submission

Scale 1:500

0 5 10 15 20

**Project Architect**

**CDARCHITECTS**

LEVEL 2, 60 PARK STREET  
SYDNEY NSW 2000  
P: 02 9267 2000  
W: www.cdarchitects.com.au

© Copyright

The copyright of this drawing together with any other documents prepared by charnie design (CD) remains the property of CD. CD grants licence for the use of this document for the purpose for which it is intended. The licence is not transferable without permission from CD.

**Project**

**PROPOSED MIXED USE DEVELOPMENT**

**47-50 THE ESPLANADE ETTALONG BEACH**

**Drawing Title**

**GROUND FLOOR PLAN**

UNITS	RATE	REQUIRED	PROPOSED
RESIDENTIAL (59 UNITS)	1 SPACE / 5 UNITS	11.8	12
VISITORS (59 UNITS)	1 SPACE / 10 UNITS	5.9	6
COMMERCIAL (521.8m²)		2	2
TOTAL		19.7	20

UNITS	RATE	REQUIRED	PROPOSED
RESIDENTIAL (59 UNITS)	1 SPACE / 5 UNITS	11.8	12
VISITORS (59 UNITS)	1 SPACE / 10 UNITS	5.9	6
COMMERCIAL (521.8m²)		2	2
TOTAL		19.7	20

**CAR PARKING SCHEDULE**  
For B2 Zone – Large Centres

UNITS	RATE	REQUIRED	PROPOSED
RESIDENTIAL (59 UNITS)	1 SPACE / 1 UNIT	59	61
SHOP TOP UNITS	NOT REQUIRED	0	0
COMMERCIAL (521.8m²)		17.39	17
SHOPS	1 SPACE / 30 m²	17.39	17
TOTAL		76.39	78

**BICYCLE SCHEDULE**  
For B2 Zone – Large Centres

UNITS	RATE	REQUIRED	PROPOSED
RESIDENTIAL (59 UNITS)	1 SPACE / 5 UNITS	11.8	12
VISITORS (59 UNITS)	1 SPACE / 10 UNITS	5.9	6
COMMERCIAL (521.8m²)		2	2
TOTAL		19.7	20

**AMENDED SUBMISSION**

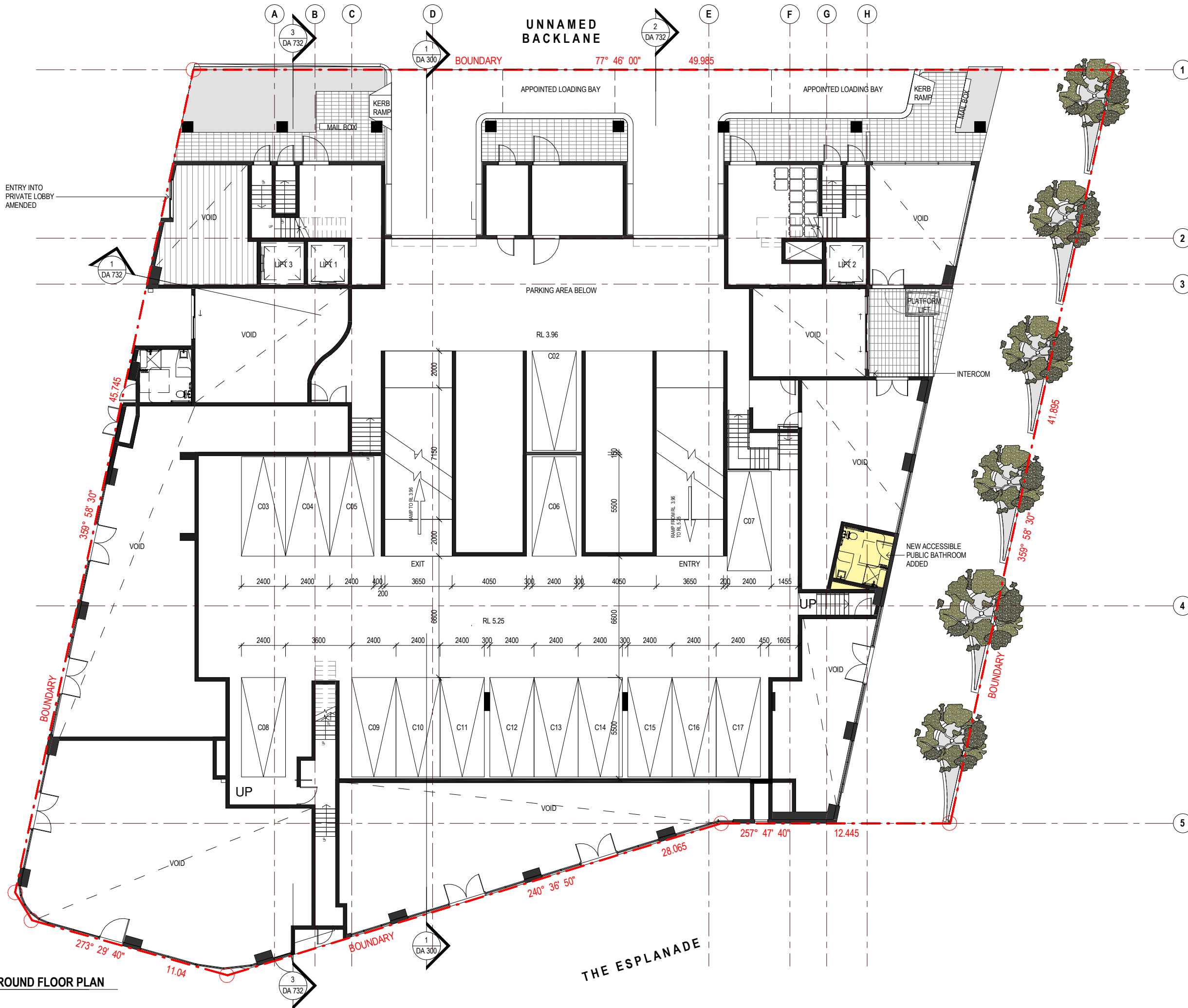
Job no.	Drawing no.	Rev.
J15304S2	DA 101	I

Drawn by: Author  
Checked by: Checker  
Date: FEB 2017

MEMORIAL AVE

UNNAMED  
BACKLANE

THE ESPLANADE



REFERENCES

DRAWINGS TO BE READ IN CONJUNCTION WITH BUT NOT LIMITED TO ALL STRUCTURAL ENGINEERS, STORMWATER ENGINEERS, LANDSCAPE ARCHITECTS, AND OTHER ASSOCIATED PLANS & REPORTS

REFER TO THE BASIS REPORT FOR ADDITIONAL REQUIREMENTS TO THE ONES NOTED ON THE DRAWINGS.

NOTES

ALL DIMENSIONS AND SETOUTS ARE TO BE VERIFIED ON SITE AND ALL OMISSIONS OR ANY DISCREPANCIES TO BE NOTIFIED TO THE ARCHITECT.

FIGURED DIMENSIONS TO BE USED AT ALL TIME.

DO NOT SCALE MEASUREMENTS OFF DRAWINGS.

PROPOSED AMENDMENTS

AREA ADDED TO GFA

ADDITIONAL S75W AMENDMENTS 27.05.20:

- NEW ACCESSIBLE PUBLIC BATHROOM ADDED

F	27.05.20	General Amendments
E	25.05.20	General Amendments
D	26.02.20	General Amendments
C	27.09.18	General Amendments
B	27.03.17	General Amendments
A	16.02.17	Modification Submission
Rev.	Date	Description
Scale	0	1:500
m	5	
	10	
	15	
	20	

Project Architect

CDARCHITECTS

LEVEL 2, 60 PARK STREET  
SYDNEY NSW 2000  
P: 02 9267 2000  
W: www.cdarchitects.com.au

© Copyright

The copyright of this drawing together with any other documents prepared by charnie design (CD) remains the property of CD. CD grants licence for the use of this document for the purpose for which it is intended. The licence is not transferable without permission from CD.

Project

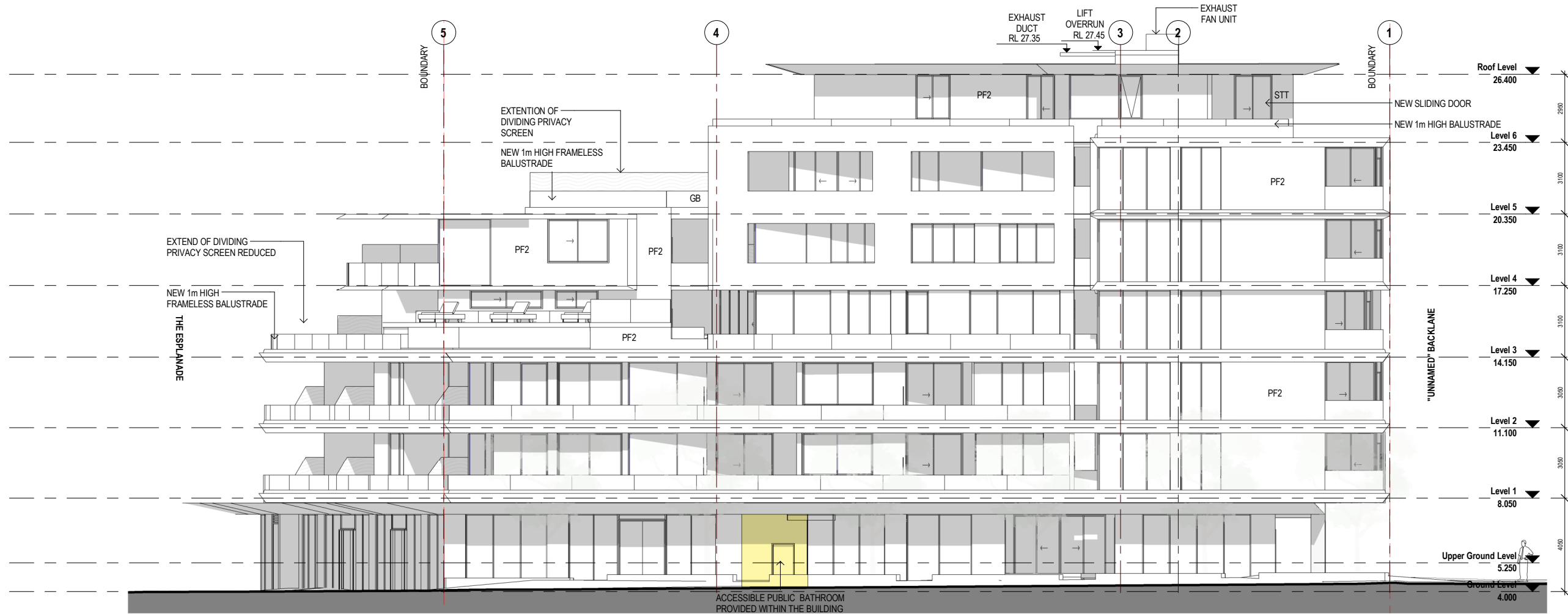
PROPOSED MIXED USE DEVELOPMENT

47-50 THE ESPLANADE ETTALONG BEACH

Drawing Title

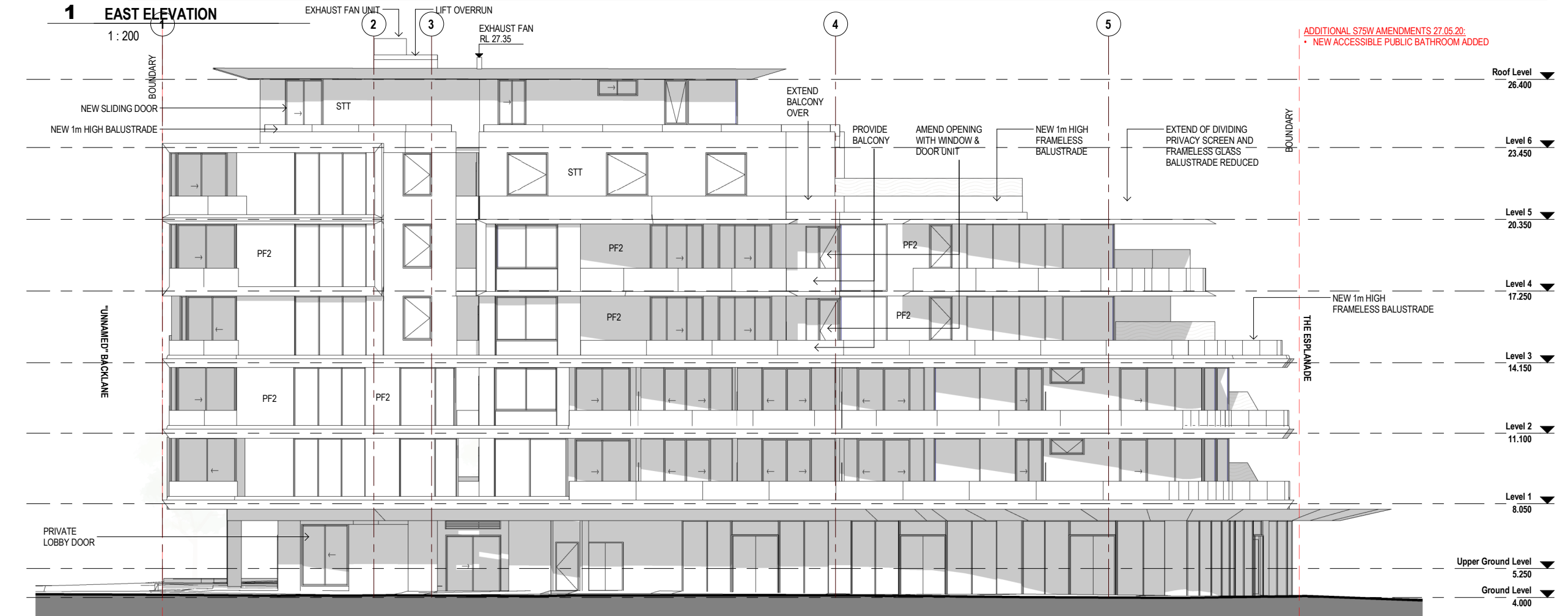
UPPER GROUND  
FLOOR PLAN (COMPARISON SHEET)

AMENDED SUBMISSION		
Job no.	Drawing no.	Rev.
J15304S2	DA 102	F
Drawn by	Checked by	Date
Author	Checker	FEB 2017



1 EAST ELEVATION

1:200



2 WEST ELEVATION

1:200

#### REFERENCES

DRAWINGS TO BE READ IN CONJUNCTION WITH BUT NOT LIMITED TO ALL STRUCTURAL ENGINEERS, STORMWATER ENGINEERS, LANDSCAPE ARCHITECTS, AND OTHER ASSOCIATED PLANS & REPORTS

REFER TO THE BASIS REPORT FOR ADDITIONAL REQUIREMENTS TO THE ONES NOTED ON THE DRAWINGS.

#### NOTES

ALL DIMENSIONS AND SETOUTS ARE TO BE VERIFIED ON SITE AND ALL OMISSIONS OR ANY DISCREPANCIES TO BE NOTIFIED TO THE ARCHITECT. FIGURED DIMENSIONS TO BE USED AT ALL TIME. DO NOT SCALE MEASUREMENTS OFF DRAWINGS.

#### MATERIAL LEGEND

AAB	ANODISED ALUMINIUM BLADE
AVB	ALUMINIUM VERTICAL BLADE & AWNING
AWD	ALUMINIUM FRAME WINDOWS & DOORS - COLOUR 1
GB	SAFETY GLASS BALUSTRADE
PF1	MANABURN PAINT FINISH
PF2	CHARCOAL PAINT FINISH
STT	SANDSTONE TILED WALL

	PROPOSED AMENDMENTS
	DIFFERENCE BETWEEN MOD 5
	ORIGINAL SUBMISSION TO MOD 5
	CURRENT SUBMISSION

J	27.05.20	General Amendments
I	25.05.20	General Amendments
H	26.02.20	General Amendments
G	06.12.18	General Amendments
F	04.12.18	General Amendments
E	27.09.18	General Amendments
D	14.07.17	Additional Information
C	27.03.17	General Amendments
B	08.03.17	Lift overruns Shadow revised
A	16.02.17	Modification Submission

Rev.	Date	Description
Scale	0	2
m	4	6
	8	
	0	1:200

Project Architect

CDARCHITECTS

LEVEL 2, 60 PARK STREET  
SYDNEY NSW 2000  
P: 02 9267 2000  
W: www.cdarchitects.com.au

© Copyright  
The copyright of this drawing together with any other documents prepared by charnie design (CD) remains the property of CD. CD grants licence for the use of this document for the purpose for which it is intended. The licence is not transferable without permission from CD.

Project  
PROPOSED MIXED USE DEVELOPMENT

47-50 THE ESPRANADE ETTALONG BEACH  
Drawing Title  
EAST & WEST  
ELEVATIONS

#### AMENDED SUBMISSION

Job no.	Drawing no.	Rev.
J15304S2	DA 201	J
Drawn by	Checked by	Date
PY	JY	FEB 197