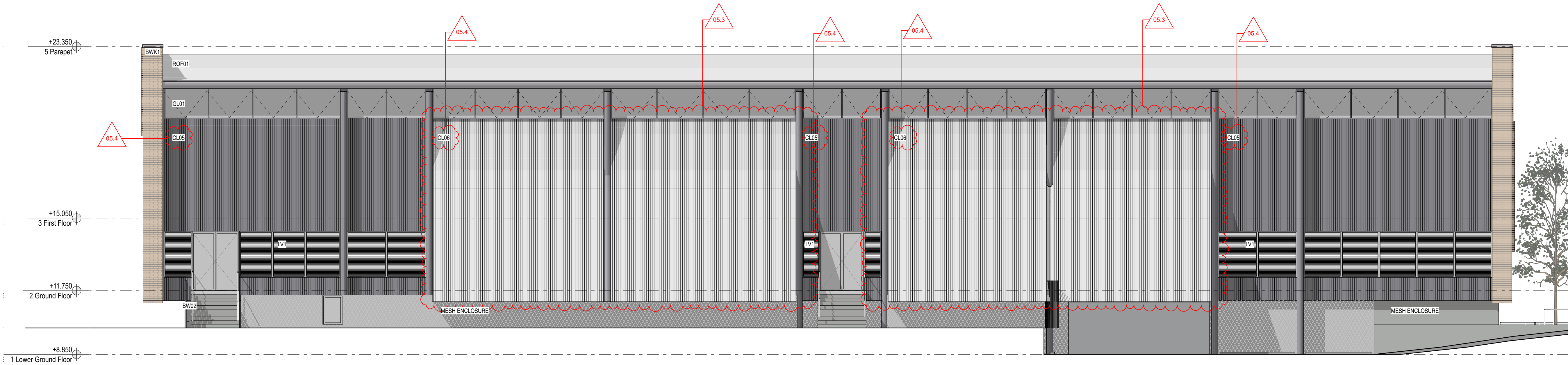


0210m

GENERAL NOTES

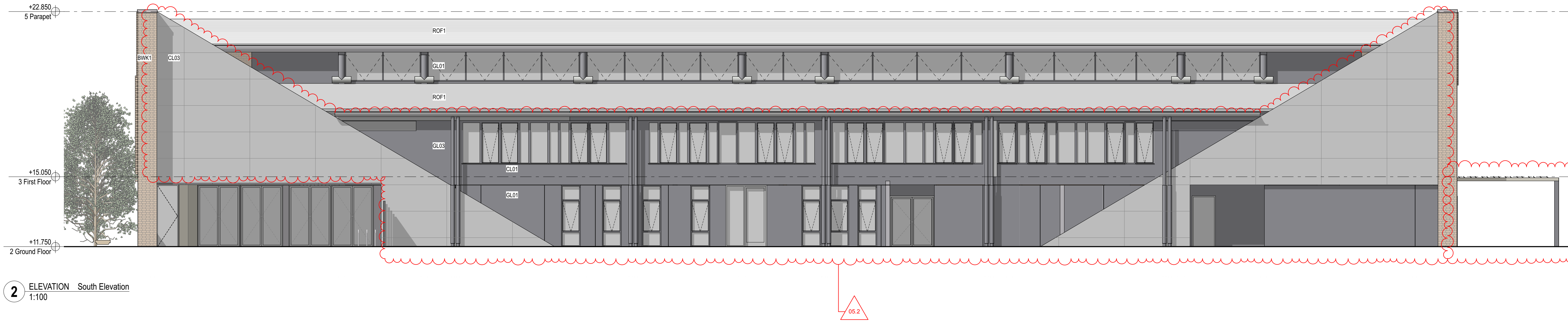
ALL DIMENSIONS AND EXISTING CONDITIONS SHALL BE CHECKED AND VERIFIED BY THE CONTRACTOR BEFORE PROCEEDING WITH THE WORK.
ALL LEVELS RELATIVE TO 'AUSTRALIAN HEIGHT DATUM'.
DO NOT SCALE DRAWINGS.
USE FIGURED DIMENSIONS ONLY.

legend



1 ELEVATION North Elevation
1:100

REFER	
SSDA-740000	EXTERIOR FINISHES SAMPLE BOARD
BWK1	BRICKWORK TYPE 1 - FACE BRICK
BW02	BLOCKWORK PAINTED
BWKX	EXISTING FACE BRICK FACADE
GL01	GLAZING - CLEAR
GL02	GLAZING - DARK
CL01	EQUITONE CLADDING DARK
CL02	CORRUGATED CLADDING DARK
CL03	FIBRE CEMENT - PAINTED LIGHT
CL04	ACCIDULATED TREATED TIMBER
CL05	ALUMINIUM SHEET CLADDING DARK
CL06	ALUMINIUM SHEET CLADDING LIGHT/MEDIUM
CEL4.2	EQUITONE (FIBRE CEMENT) CLADDING SOFFIT
FT03	HIGH TENSILE MESH AND INTEGRATED
FT04	PAINTED STEEL COLUMN WITH ACCOYA CLADDING
LV01	EXTERNAL ALUMINIUM LOUVRES
LV02	EXTERNAL GLAZED AUTOMATED LOUVRES
PF30	PAINTED STEEL
ROF01	CORRUGATED ROOF CLADDING LIGHT



2 ELEVATION South Elevation
1:100

05	24/11/21	PCYC Elevations development	05.5	CL06	DC	
			05.4	Cladding nominations		
			05.3	Development of envelope sloping projections		
			05.2	Cladding articulation/arrangement		
			05.1	Awning to BBQ area		
04	14/4/21	SSDA			MJ	
03	26/3/21	SSDA			KT	
02	23/2/21	Draft SSDA 02			KT	
01	12/2/21	Draft SSDA			MJ	
rev	date	name			by	chk

fjmt studio architecture interiors landscape urban community
sydney melbourne uk
Level 5, 70 King Street t +61 2 9251 7077 w fjmtstudio.com

fjmt

project

Hastings Schools Port Macquarie
Hastings Secondary College
Port Macquarie NSW 2444

title

1:100 Elevations
Elevations - PCYC North & South

scale

1:200 @ A1

first issued

12/2/21

project code

sheet no.

revision

HSPM

SSDA-310201

05