

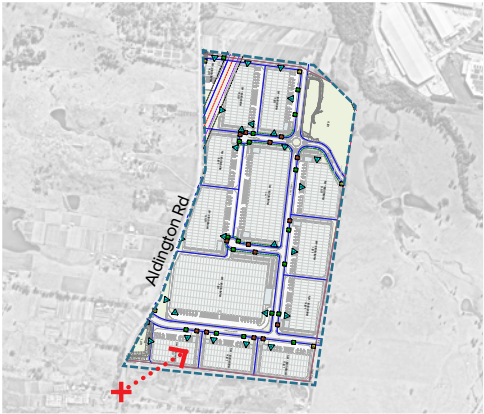
2.6 Viewpoint 1 ALDINGTON ROAD VISUAL MONTAGE

1 Year Impact

Legend

- Site Boundary
 - Visual Impact Viewpoint Locations
 - Direction of photo taken
- Co-ordinates : 33 51 4S 150 47 46E
60m Latitude 38 degrees North East

Key Plan



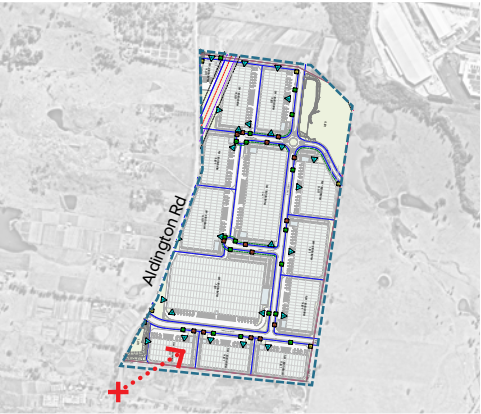
2.7 Viewpoint 1 ALDINGTON ROAD VISUAL MONTAGE

5 Year Impact

Legend

- Site Boundary
 - Visual Impact Viewpoint Locations
 - Direction of photo taken
- Co-ordinates : 33 51 4S 150 47 46E
60m Latitude 38 degrees North East

Key Plan



2.8 Viewpoint 1 ALDINGTON ROAD VISUAL MONTAGE

10 Year Impact

Viewpoint 02 - This view faces north-east along Aldington Road and represents a view of a public receiver travelling in a vehicle. The view of the proposed development sits in the right hand side of the image and represents the southern boundary of the property.

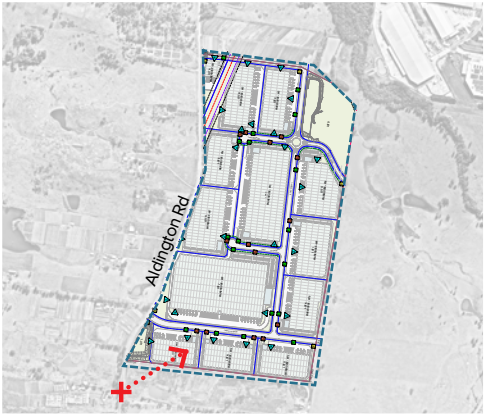
The tree and shrub planting in the foreground of the development shows an approximation of projected growth after 10 years. The recommended planting largely obscures the proposed development, and a low impact value has been assigned.

Legend

- Site Boundary
- Visual Impact Viewpoint Locations
- Direction of photo taken

Co-ordinates : 33 51 4S 150 47 46E
60m Latitude 38 degrees North East

Key Plan



2.5 Viewpoint 2 ALDINGTON ROAD EXISTING SITE

Existing Site

Legend

- Site Boundary
 - Visual Impact Viewpoint Locations
 - Direction of photo taken
- Co-ordinates : 33 50 55S 150 47 49E
60m Latitude 57 degrees North East

Key Plan



2.6 Viewpoint 2 ALDINGTON ROAD VISUAL MONTAGE

1 Year Impact

Legend

- Site Boundary
 - Visual Impact Viewpoint Locations
 - Direction of photo taken
- Co-ordinates : 33 50 55S 150 47 49E
60m Latitude 57 degrees North East

Key Plan



2.7 Viewpoint 2 ALDINGTON ROAD VISUAL MONTAGE

5 Year Impact

Legend

- Site Boundary
 - Visual Impact Viewpoint Locations
 - Direction of photo taken
- Co-ordinates : 33 50 55S 150 47 49E
60m Latitude 57 degrees North East

Key Plan



2.8 Viewpoint 2 ALDINGTON ROAD VISUAL MONTAGE

10 Year Impact

Viewpoint 02 - This view faces north-east along Aldington Road and represents a view of a public receiver travelling in a vehicle. The view of the proposed development sits across the road and represents the western boundary of the property.

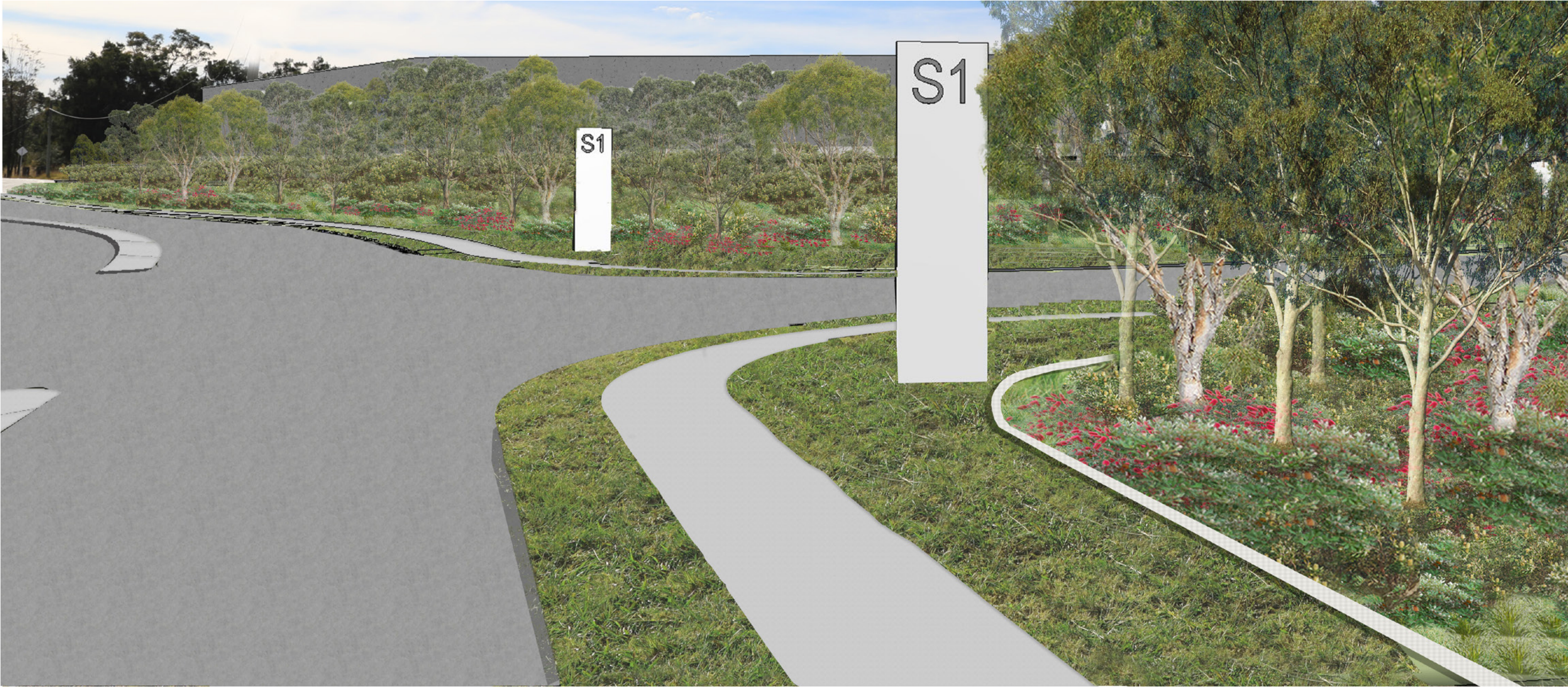
The tree and shrub planting in the foreground of the development shows an approximation of projected growth after 10 years. The recommended planting largely obscures the proposed development, and a low impact value has been assigned.

Legend

- Site Boundary
- Visual Impact Viewpoint Locations
- Direction of photo taken

Co-ordinates : 33 50 55S 150 47 49E
60m Latitude 57 degrees North East

Key Plan



2.9 Viewpoint 3 ALDINGTON ROAD EXISTING SITE

Existing Site

Legend

- Site Boundary
 - Visual Impact Viewpoint Locations
 - Direction of photo taken
- Co-ordinates : 33 50 52S 150 47 451E
70m Latitude 86 degrees East

Key Plan



2.10 Viewpoint 3 ALDINGTON ROAD VISUAL MONTAGE

1 Year Impact

Legend

- Site Boundary
 - Visual Impact Viewpoint Locations
 - Direction of photo taken
- Co-ordinates : 33 50 52S 150 47 451E
70m Latitude 86 degrees East

Key Plan



2.11 Viewpoint 3 ALDINGTON ROAD VISUAL MONTAGE

5 Year Impact

Legend

- Site Boundary
 - Visual Impact Viewpoint Locations
 - Direction of photo taken
- Co-ordinates : 33 50 52S 150 47 451E
70m Latitude 86 degrees East

Key Plan

