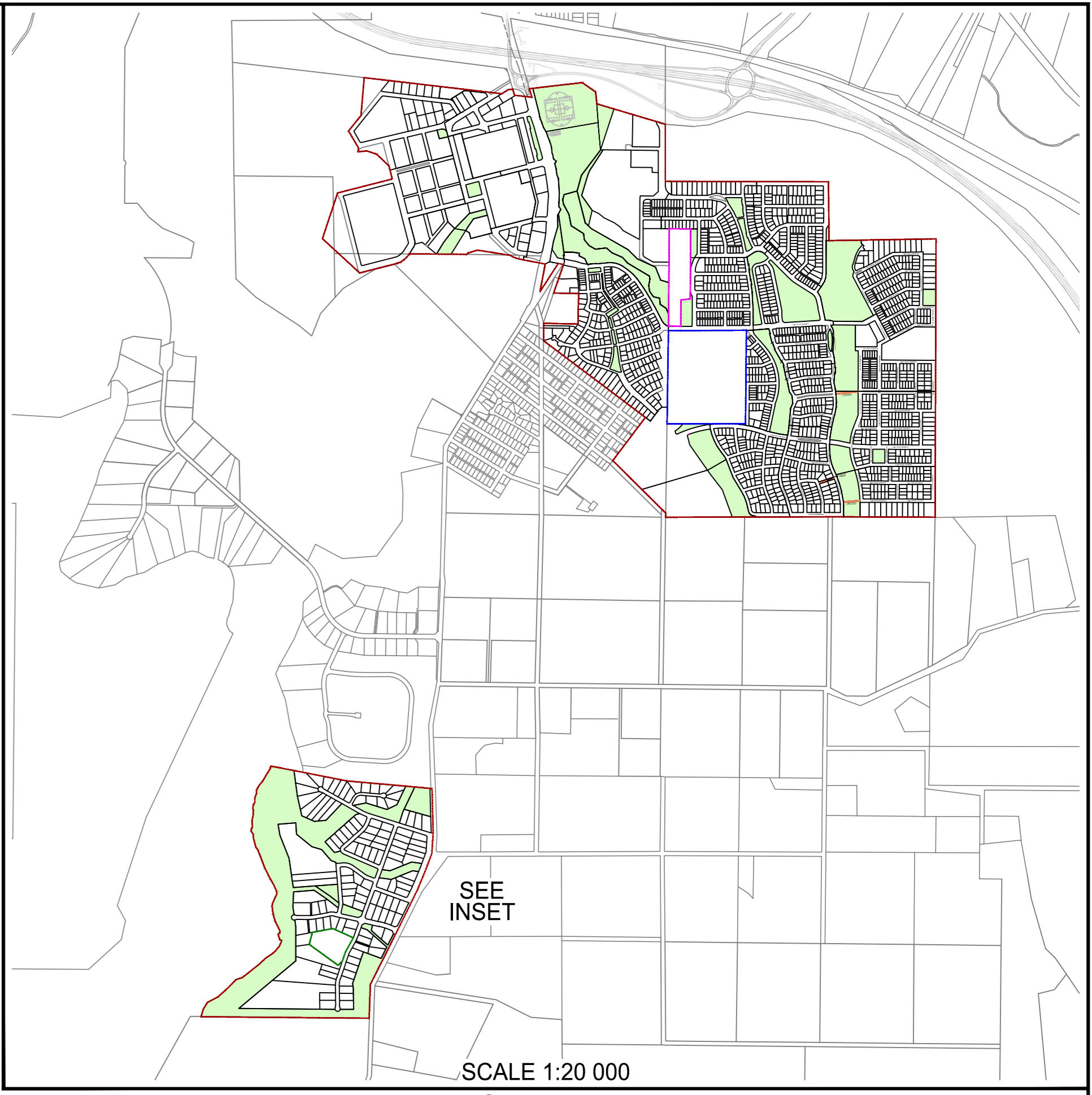
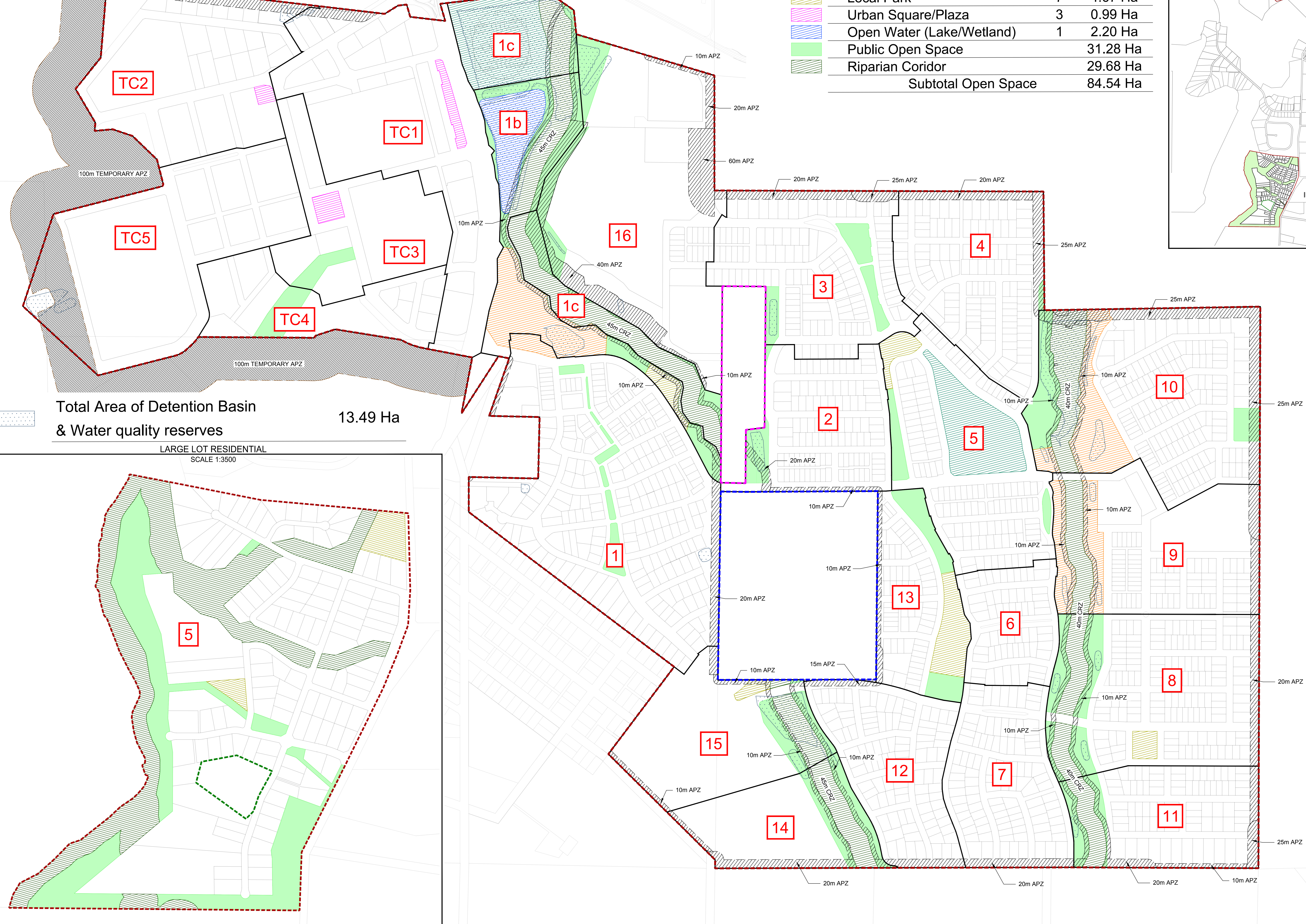


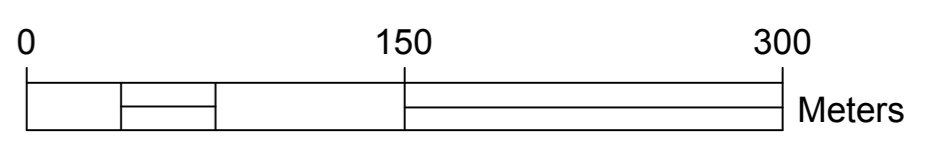
Area	Qty.	Size
Local Sport Facility	2	7.44 Ha
District Park	2	8.28 Ha
Local Park	7	4.67 Ha
Urban Square/Plaza	3	0.99 Ha
Open Water (Lake/Wetland)	1	2.20 Ha
Public Open Space		31.28 Ha
Riparian Corridor		29.68 Ha
Subtotal Open Space		84.54 Ha



25m APZ
NOTE: ONLY APPLICABLE TO RESIDENTIAL LOTS



- LEGEND**
- 1 SUB STAGE NUMBER
 - SUB STAGE BOUNDARY
 - - - STAGE 1 BOUNDARY
 - - - LOT 34 BOUNDARY
 - - - LOT 35I BOUNDARY
 - - - LOT 11 BOUNDARY



ISSUE	DATE	PURPOSE
(0)	20/01/2020	PRELIMINARY REVIEW BY CLIENT
(1)	03/02/2020	AMEND TO MOD 13 REV. 1 BASE, AMEND BASIN & WATER QUALITY RESERVES.
(2)	21/02/2020	AMEND TO MOD 13 REV. 2 BASE, STORM WATER AREAS PER NORTHROP MASTER PLAN 14/02/2020
(3)	03/06/2020	AMEND TO MOD 13 REV. 3 BASE

ISSUE	DATE	PURPOSE

ISSUE	DATE	PURPOSE

COPYRIGHT © Daly-Smith PTY LTD ABN 83 081 228 880
 THE DRAWING IS PREPARED SOLELY FOR THE USE OF THE CONTRACTUAL CUSTOMER OF Daly-Smith PTY LTD AND Daly-Smith PTY LTD ASSUMES NO LIABILITY TO ANY OTHER PARTY FOR ANY REPRESENTATIONS CONTAINED IN THIS DRAWING.



SCALE 1:3000
 SHEET SIZE A0
 DRAWN BY RB
 CHECKED BY ADM
 DRAWING TITLE 1 TO 3000(MOD13) PUBLIC EMBELLISHMENTS
 PROJECT HUNTLEE STAGE 1 - DEVELOPMENT AREA WINE COUNTRY DRIVE, HUNTLEE
 CLIENT HUNTLEE PTY.LTD.

DALY.SMITH
 EXPERIENCE YOU CAN TRUST

A: 8/48 Newcastle Street, Murrumbidgee NSW 2564
 A: 4/9 Lambton Road, Broadmeadow NSW 2325
 T: (02) 4979 2245 F: (02) 4970 5366
 E: mail@daly-smith.com.au
 DALYSMITH.COM.AU

20406
 SHEET NO: 1 OF 1