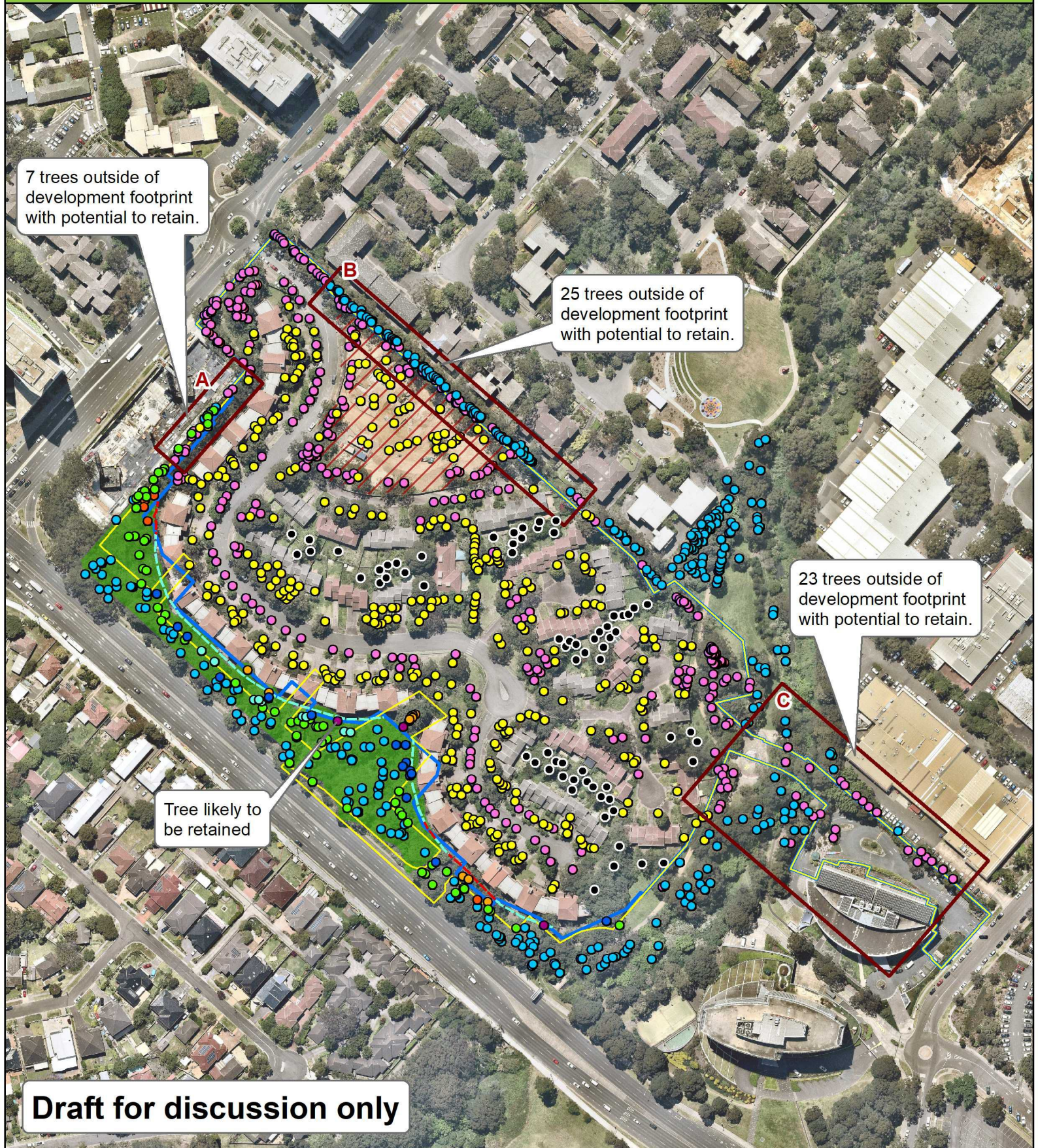


Ivanhoe Estate - 2018/2019 Development Plan Changes



Legend

- Development Footprint (2018)
- Development Footprint (2019)
- Stage 1 Demolition Area (completed July 2018)
- Zone 1 Turpentine - Grey Ironbark open forest (Good)
- Retaining Wall (to be retained)
- Retaining Wall (to be removed)

Tree Impacts

- Retained (no change)
- Not assessed in 2018 (retained)
- Previously removed in demolition, now retained
- Previously removed in development, now retained
- Removed during demolition (no change)

- Not assessed in 2018 (removed in demolition)
- Previously removed during development, now removed in demolition
- Removed during development (no change)
- Not assessed in 2018 (removed during development)
- 68 Trees in backyards (estimated from API, will be removed)

0 25 50 100
Metres

Datum/Projection:
GDA 1994 MGA Zone 56
Prepared by: KR/EB
Date: 17-01-2020
Imagery Captured: 22-10-2019

nearmap
.com



eco
logical
AUSTRALIA
A TETRA TECH COMPANY