







[illegible]

 APPROXIMATE LOCATION LINE OF TEMPORARY FENCE
 APPROXIMATE LOCATION LINE OF HOARDING
 DEMOLITION STAGE 1
 HARD SURFACE & SUB-BASE TO BE REMOVED
 DEMOLITION STAGE 2
 REFER TO ARBORIST REPORT FOR TREES TO BE REMOVED
 CONTOURS @ 0.5m INTERVAL

ALL DEMOLITION WORKS BY CONTRACTOR UNLESS NOTED OTHERWISE. THE DESIGN DRAWINGS MAY NOT SHOW ALL ITEMS REQUIRED TO CARRY OUT THE DEMOLITION WORKS. THE CONTRACTOR SHALL BE RESPONSIBLE FOR VISUAL SITE VISIT TO FAMILIARISE THEMSELVES WITH THE FULL EXTENT OF THE WORKS.

ALL DEMOLITION WORKS ARE TO BE CARRIED OUT IN ACCORDANCE WITH ALL RELEVANT CONSENTS OF CONSENT.

THE CONTRACTOR SHALL BE RESPONSIBLE TO READ IN CONJUNCTION WITH THE STRUCTURAL DEMOLITION DRAWINGS, THE SUPERINTENDENT IF DISCREPANCIES ARE FOUND BETWEEN THE ARCHITECTURAL AND STRUCTURAL DRAWINGS.

PRIOR TO COMMENCING DEMOLITION, ALL PLANS, METHODOLOGIES, STAGING AND DEMOLITION PROCEDURES ARE TO BE APPROVED BY THE STRUCTURAL DEMOLITION SUPERINTENDENT. THE SUPERINTENDENT IS TO APPROVE FOR DEMOLITION DETAILS, SEQUENCING, TEMPORARY WORKS, PROPPING AND SPECIFIC REQUIREMENTS.

THE CONTRACTOR SHALL BE RESPONSIBLE TO COMMENCEMENT OF WORKS. CONFIRM THE APPROVAL OF EXISTING AND DESIGN DRAWINGS.

THE CONTRACTOR SHALL BE RESPONSIBLE FOR BASE BUILDING STRUCTURES AND ELEMENTS IDENTIFIED TO BE RETAINED.

TEMPORARY FENCING, HOARDINGS AND SCAFFOLDING ARE TO BE PLACED IN ACCORDANCE WITH THE SUPERINTENDENT'S APPROVAL. THE SUPERINTENDENT FOR APPROVAL INCLUDING USE OF GRAPHICS USED ON THE HOARDING AND SCAFFOLDING.

THE CONTRACTOR'S IMPLEMENTATION OF DEMOLITION WORKS REVIEW ALL HAZARDOUS MATERIALS REPORTS, OR IN THE ABSENCE OF SUCH COMMUNICATION A SURVEY TO BE CONDUCTED BY THE CONTRACTOR TO IDENTIFY ANY HAZARDOUS MATERIALS. ALL HAZARDOUS MATERIALS DESIGNATED TO BE REMOVED IN ACCORDANCE WITH ALL AUTHORITY REQUIREMENTS, PRIOR TO COMMENCEMENT OF DEMOLITION WORKS. THE CONTRACTOR SHALL BE RESPONSIBLE FOR IDENTIFYING AND RETAINING AREAS OF DEMOLITION NOT AFFECTED VITALITY COMPANIES AND THE SUPERINTENDENT IN ADVANCE AND OBTAIN APPROVAL BEFORE STARTING THE DEMOLITION WORKS.

PERFORM THE DEMOLITION IN SUCH A WAY AS TO DELIVER THE RETAINED AREAS OF DEMOLITION IN SUCH A MANNER THAT IS SATISFACTORY TO THE FOLLOWING WORKS. THE CONTRACTOR SHALL BE RESPONSIBLE FOR OBTAINING COMPLETION OF DEMOLITION.

THE CONTRACTOR SHALL BE REMOVED FROM SITE UNLESS OTHERWISE SPECIFIED TO BE SALVAGED.

REMOVAL AND/OR RETENTION OF ANY UNDERGROUND PIPES / SERVICES IS TO BE DETERMINED BY THE SUPERINTENDENT.

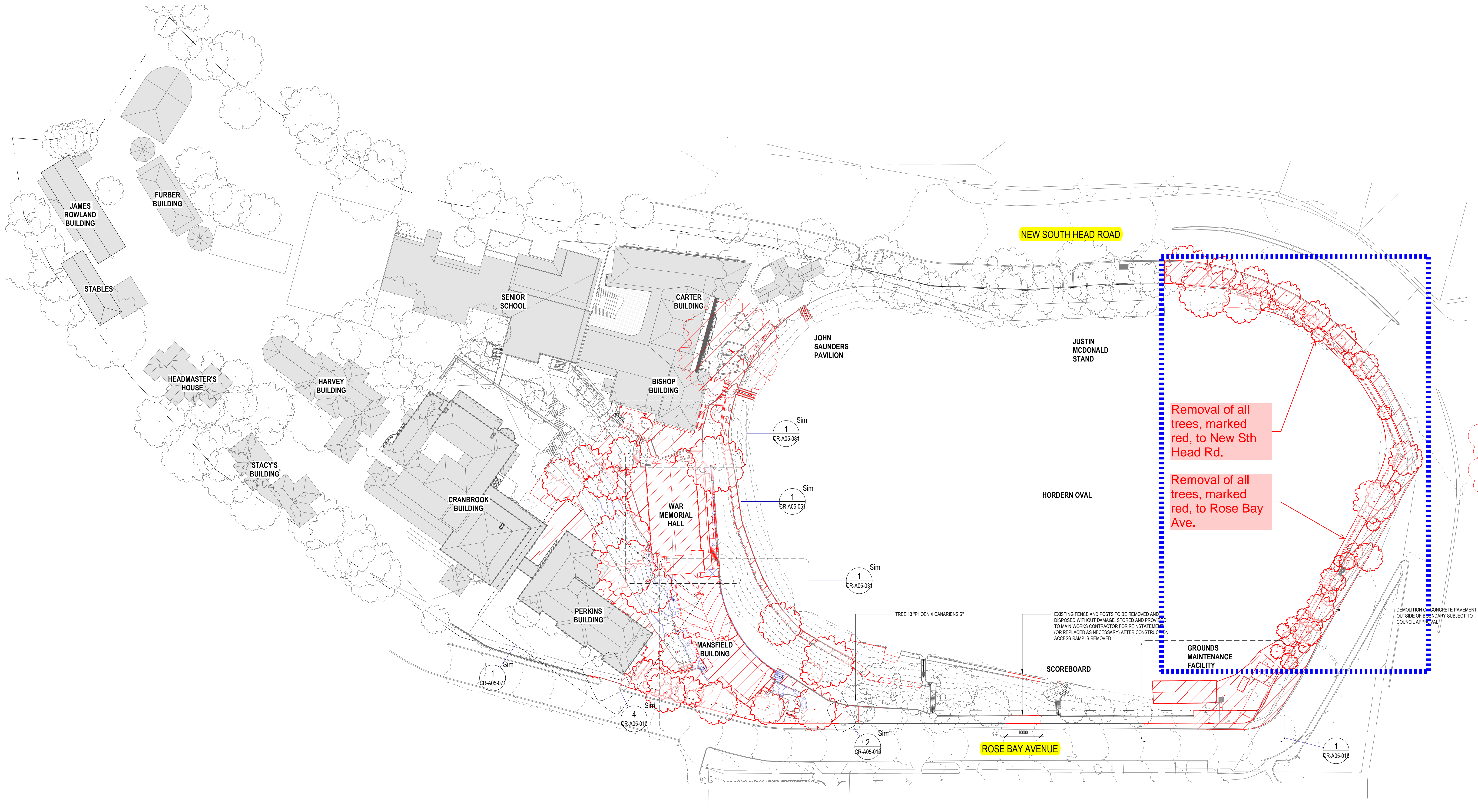
RETENTION/REMOVAL OF SIGN POLES, TRAFFIC LIGHTS AND THE LIKE, TO BE COORDINATED WITH RELEVANT AUTHORITIES, REFER TO CIVIL ENGINEERS.

REMOVAL OF ALL ELECTRICAL AND MECHANICAL SERVICES, REFER TO HYDRAULIC ENGINEERS DRAWINGS FOR ALL SEVER DISCONNECTION & REMOVAL.

GRESS FOR LIFE SAFETY FROM ADJACENT BUILDINGS AND ACROSS SCHOOL GROUNDS IS TO BE MAINTAINED AT ALL TIMES IN ACCORDANCE WITH BOACNG REQUIREMENTS. THE CONTRACTOR SHALL BE RESPONSIBLE FOR LOCATION, APPROVAL, SIGNAGE AND TEMPORARY MEASURES AS REQUIRED.

project no	170013	5
------------	--------	---

5/03/2019 4:10:49 PM



SCALE: 1 : 500

project no 170013 5