

UMBACO LANDSCAPE ARCHITECTS
LANDSCAPE MASTER PLAN
 ST ANTHONY OF PADUA, AUSTRAL
 FOR
SYDNEY CATHOLIC SCHOOLS

CONCEPT PROPOSAL

TABLE OF CONTENTS	L-MP01
LANDSCAPE DESIGN PRINCIPLES	L-MP02
LANDSCAPE MASTER PLAN	L-MP03
PIAZZA AND PUBLIC SPACES	L-MP04
PLAY & OUTDOOR LEARNING	L-MP05
FITNESS AND SPORTS FIELDS	L-MP06
SITE TREE PLANTING PLAN ARRANGEMENT	L-MP07
PROPOSED PLANT SPECIES	L-MP08
PROPOSED PLANTING SCHEME	L-MP09
STAGING & SHADING DIAGRAM	L-MP10
STAGING & SHADING DIAGRAM	L-MP11



Existing remnant trees along Tenth Avenue proposed for retention.



St Anthony of Padua school frontage along recently built carpark at Eleventh Avenue.



View from existing outdoor play area into the carpark.



A view into group of existing remnant trees on site proposed for retention.



LEGEND

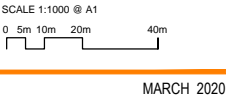
- 1 Establish generous entry pathways into development.
 - 2 Provide a welcoming civic space with multifunctional opportunities for public events.
 - 3 Provide a buffer and appropriate landscape treatment to Indoor Recreation Centre.
 - 4 Retain & protect existing remnant trees.
 - 5 Use feature tree avenues along major axis.
 - 6 Provide appropriate landscape interface to the Forum complex.
 - 7 Provide stimulating outdoor learning and play environment.
 - 8 Provide courts with attractive and functional facilities.
 - 9 Provide broad tree canopy to carparks.
 - 10 Future Church.
 - 11 Include broad canopy trees around soccer field.
 - 12 Provide broad canopy trees to site streetscape frontage.
- SITE BOUNDARY
 - ← KEY PEDESTRAIN LINKS
 - ↔ SECONDARY PEDESTRAIN LINKS
 - - - FENCING DELINEATING SCHOOL AND PUBLIC ENVIRONMENT
 - △▽ VEHICULAR EXIT & ENTRY
 - ☒ BELL TOWER
 - INDICATIVE TREE LOCATIONS REFER TO MP07 & MP09 FOR MORE DETAILS & SK08 FOR PROPOSED SPECIES
 - F ALLOCATED AREAS FOR FITNESS STATIONS
 - P OUTDOOR PRACTICAL SPACE

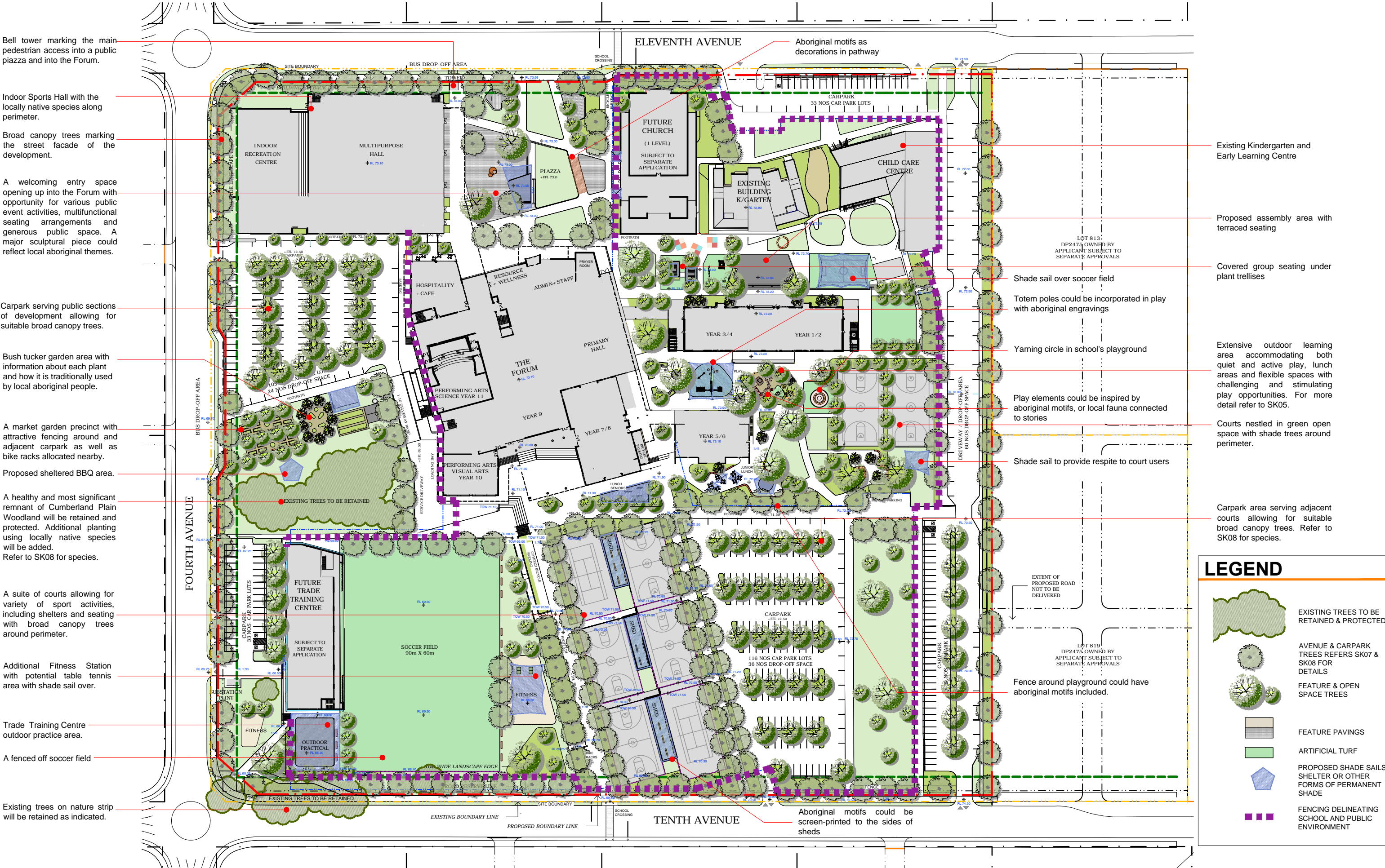
LANDSCAPE DESIGN PRINCIPLES

ST ANTHONY OF PADUA , AUSTRAL

LANDSCAPE MASTER PLAN

CONCEPT PROPOSAL
L - MP02 issue J





Bell tower marking the main pedestrian access into a public piazza and into the Forum.

Indoor Sports Hall with the locally native species along perimeter.

Broad canopy trees marking the street facade of the development.

A welcoming entry space opening up into the Forum with opportunity for various public event activities, multifunctional seating arrangements and generous public space. A major sculptural piece could reflect local aboriginal themes.

Carpark serving public sections of development allowing for suitable broad canopy trees.

Bush tucker garden area with information about each plant and how it is traditionally used by local aboriginal people.

A market garden precinct with attractive fencing around and adjacent carpark as well as bike racks allocated nearby.

Proposed sheltered BBQ area.

A healthy and most significant remnant of Cumberland Plain Woodland will be retained and protected. Additional planting using locally native species will be added. Refer to SK08 for species.

A suite of courts allowing for variety of sport activities, including shelters and seating with broad canopy trees around perimeter.

Additional Fitness Station with potential table tennis area with shade sail over.

Trade Training Centre outdoor practice area.

A fenced off soccer field

Existing trees on nature strip will be retained as indicated.

Aboriginal motifs as decorations in pathway

Aboriginal motifs could be screen-printed to the sides of sheds

Existing Kindergarten and Early Learning Centre

Proposed assembly area with terraced seating

Covered group seating under plant trellises

Shade sail over soccer field

Totem poles could be incorporated in play with aboriginal engravings

Yarning circle in school's playground

Play elements could be inspired by aboriginal motifs, or local fauna connected to stories

Courts nestled in green open space with shade trees around perimeter.

Carpark area serving adjacent courts allowing for suitable broad canopy trees. Refer to SK08 for species.

Shade sail to provide respite to court users

Fence around playground could have aboriginal motifs included.

LEGEND

- EXISTING TREES TO BE RETAINED & PROTECTED
- AVENUE & CARPARK TREES REFERS SK07 & SK08 FOR DETAILS
- FEATURE & OPEN SPACE TREES
- FEATURE PAVINGS
- ARTIFICIAL TURF
- PROPOSED SHADE SAILS, SHELTER OR OTHER FORMS OF PERMANENT SHADE
- FENCING DELINEATING SCHOOL AND PUBLIC ENVIRONMENT

LANDSCAPE MASTER PLAN

ST ANTHONY OF PADUA , AUSTRAL



PERGOLA WITH CLIMBERS OVER WALKWAYS WILL PROVIDE SHADE DURING HOT SUMMER DAYS



LOUNGE SEATING AND TERRACES FOR PIAZZA AREA
Wentworth Point Library forecourt, Umbaco



SEATING IN THE SHADE OF TREES



PUBLIC ART CELEBRATING LOCAL ABORIGINAL STORIES
Taroonga Zoo, by Jane Cavanough/Tom Misura



BUSH TUCKER CAN BE INTRODUCED TO MARKET GARDENS TO DEMONSTRATE THE USE OF NATIVE FLORA FOR CULINARY AND MEDICINAL PURPOSES



ART OPPORTUNITIES FOR MARKET GARDENS FENCING



VIEW FROM ELEVENTH AVENUE THROUGH PUBLIC PIAZZA ONTO FORUM



TREES IN PAVINGS WILL INCLUDE TREE GRATES THAT CAN BE CUSTOM DESIGNED TO REFLECT LOCAL HISTORY



NOOKS FOR GROUPS OF PEOPLE TO SOCIALISE



OPEN PIAZZA AREA ALLOWING FOR VARIETY OF PUBLIC ACTIVITIES
MONASH UNIVERSITY (image by Ben Wrigley)

PIAZZA AND PUBLIC SPACES

ST ANTHONY OF PADUA , AUSTRAL

LANDSCAPE MASTER PLAN

CONCEPT PROPOSAL
L-MP04 issue J

MARCH 2020





SHADED SEATING AREAS UNDER TREES



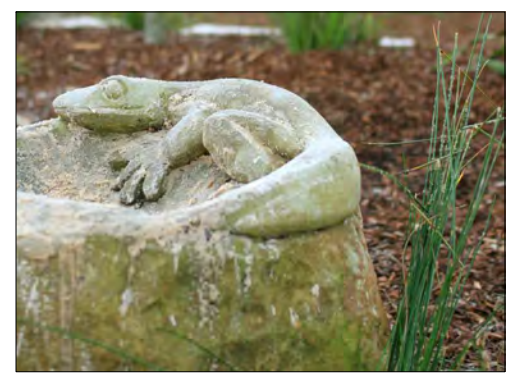
MOUNDS FOR PLAY



VARIETY OF SEATING INTEGRATED WITH TREES



HOPSCOTCH PATTERN IN RUBBER



SITE SPECIFIC ART INTRODUCED TO SCHOOL PLAYGROUND



AND HANGING UPSIDE DOWN



MUSICAL INSTRUMENTS



WOBBLY JUMPING PLATFORMS



A SITE SPECIFIC ABORIGINAL MURAL COULD BE DESIGNED IN COLLABORATION WITH LOCAL ABORIGINAL GROUP (google image)



CUBBY HOUSE SURROUNDED BY NATURE PLAY



INFORMAL OUTDOOR LEARNING AND LUNCH AREAS



SMALL CUBBIES OR TEEPES FOR ROLE PLAY AND RETREAT



BOTTLE TREES, DROUGHT TOLERANT INLAND TREES



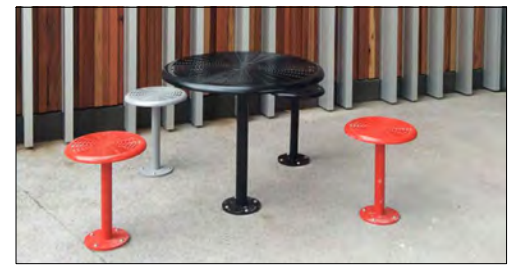
CLIMBING AND SLIDING ACTIVITIES ARE EXCELLENT ADDITION TO SCHOOL'S CURRICULUM



YARNING CIRCLE IN JUNIOR SCHOOL PLAYGROUND



BALANCING AND ROPE PLAY IS POPULAR WITH CHILDREN



LUNCH SEATING FOR OLDER STUDENTS



TERRACED SEATING FOR OUTDOOR CLASSROOM OR LUNCH



VARIETY OF SURFACES SPARKING IMAGINATION



VARIETY OF SEATING

PLAY AND OUTDOOR LEARNING

ST ANTHONY OF PADUA , AUSTRAL

LANDSCAPE MASTER PLAN

CONCEPT PROPOSAL
L-MP05 issue J

MARCH 2020





SOCCER FIELD WILL BE MANAGED BY THE SCHOOL



PLAYING FIELDS AND COURTS WILL BE SHADED BY LARGE AVENUE TREES , TURF GROUNDS WILL BE IRRIGATED. SHADE STRUCTURES WILL BE PROVIDED TO ENSURE IMMEDIATE SHADE.



OPPORTUNITIES FOR VARIETY OF COMMUNITY ACTIVITIES



ACCESSIBLE BBQ NEAR COURTS WITH SHELTERS TO PROVIDE SHADE



FITNESS STATIONS



SPACES FOR COMMUNITY FITNESS PROGRAMS



FENCED OFF TENNIS COURTS WITH SEATING AND SHADE UMBRELLAS



TABLE TENNIS AREA WITH MORE SEATING CAN PROVIDE ADDITIONAL MEETING PLACE

FITNESS AND SPORTS FIELDS

ST ANTHONY OF PADUA , AUSTRAL

LANDSCAPE MASTER PLAN

CONCEPT PROPOSAL
L-MP06 issue J





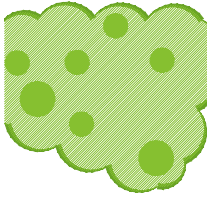

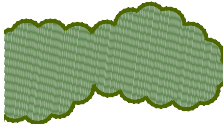
MARCH 2020





TREE TYPES

PROPOSED TREES SPECIES

<p> FEATURE LARGE PARKLAND TREES up to 30m tall and 10m wide These trees will be used as solitary trees in a wider garden bed area, so that their broad canopy shape can be appreciated.</p>	<p><i>Eucalyptus tereticomis</i> <i>Ficus microcarpa</i> var. <i>Hillii</i> <i>Lophostemon confertus</i> <i>Magnolia grandiflora</i> <i>Quercus palustris</i></p>
<p> FEATURE AVENUE TREES (FIRE RETARDANT OR FIRE RESISTANT SPECIES) 25m tall & 8m wide Avenue trees will be selected for their reliable growth characteristics able to provide substantial avenues enabling much needed shade to key pedestrian routes.</p>	<p><i>Acer x freemanii</i> 'Jeffersred' <i>Lagerstroemia indica</i> x <i>fauriei</i> 'Natchez' <i>Pyrus calleryana</i> <i>Quercus palustris</i> <i>Tristanopsis laurina</i> 'Luscious' <i>Sapium sebiferum</i> <i>Waterhousea floribunda</i> 'Green Avenue'</p>
<p> CARPARK TREES 25m tall & 5m wide Carpark trees will be selected for their ability to with stand compaction and perform reliably providing shade canopies area over carpark areas.</p>	<p><i>Corymbia maculata</i> <i>Eucalyptus sideroxylon</i> <i>Pyrus calleryana</i> 'Bradford' <i>Tristanopsis laurina</i> 'Luscious'</p>
<p> LOCALLY NATIVE PERIMETER STREET TREES 15 - 30m tall & 8 - 10m wide street trees will be selected for their reliable growth in street environment.</p>	<p><i>Angophora floribunda</i> <i>Angophora subvelutina</i> <i>Corymbia maculata</i> <i>Eucalyptus crebra</i> <i>Eucalyptus tereticomis</i></p>
<p> OPEN SPACE & OUTDOOR PLAY AREAS VEGETATION A mix of locally native and feature species suitable for each location.</p>	<p><i>Brachychiton rupestris</i> <i>Corymbia maculata</i> <i>Eucalyptus sideroxylon</i> <i>Exocarpos cupressiformis</i> <i>Geijera parviflora</i> <i>Lagerstroemia</i> sp. <i>Melaleuca amillarlis</i> <i>Pyrus calleryana</i> 'Bradford' <i>Tristanopsis laurina</i> 'Luscious' <i>Waterhousea floribunda</i> 'Green Avenue'</p>
<p> LOCALLY NATIVE PARKLAND TREES AND BUSHLAND UNDERSTOREY A locally native trees and understorey species complimenting existing bushland remnants.</p>	<p><i>Eucalyptus moluccana</i> <i>Eucalyptus crebra</i> <i>Eucalyptus tereticomis</i> <i>Melaleuca decora</i> <i>Melaleuca amillarlis</i> <i>Melaleuca linariifolia</i></p>
<p> EXISTING CUMBERLAND PLAIN WOODLAND VEGETATION TO BE RETAINED& ENHANCED</p>	<p>Locally native existing species will be maintained</p>

SITE TREE PLANTING PLAN ARRANGEMENT

ST ANTHONY OF PADUA , AUSTRAL

LANDSCAPE MASTER PLAN

CONCEPT PROPOSAL
L-MP07 issue J

SCALE 1:700 @ A1
0 5m 10m 20m 40m
MARCH 2020



TREES



Hills Fig



Grey Gum / CPW



Forest Red Gum / CPW



Red Ironbark



Spotted Gum / CPW



Weeping Lily Pilly



Brush Box



Water Gum



White Feather Myrtle / CPW



Queensland Bottle Tree



Eumundi Quandong



Snow-in-Summer / CPW



Magnolia Little Gem



Wheeping BottleBrush



Native Willow



Pear Tree



Natchez Crape Myrtle



Sioux Crape Myrtle

SHRUBS



Bottlebrush



Rosemary



Callistemon 'Red Rover'



Coastal Rosemary



Indian Hawthorn



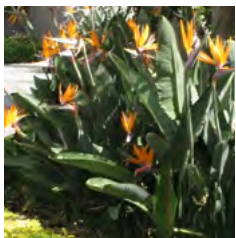
Thyme Honey Myrtle



Sacred Bamboo



Durrantha 'Sheenas Gold'



Bird of Paradise



Callistemon 'Green John'



Gymea Lily



Burrawang

GROUNDCOVERS



Sterile Gazania



Liriope



Pigface



Native Sarsparilla



Star Jasmine



Shore Juniper

NATIVE GRASSES & GROUNDCOVERS (Cumberland Plain Woodland species)



Tussock Grass



Mat Rush



Native Sarsparilla



Kidney Weed



Kangaroo Grass



Native Indigo

FIRE RESISTANT	PROPOSED PLANT SCHEDULE				
	Botanical Name	Common Name	Pot size	Indicative Mature Hieght	Indicative Mature Spread
	LARGE CANOPY TREE TREES / CUMBERLAND PLAIN WOODLAND SPECIES				
	Angophora subvelutina	Broad Leaved Apple	75 L	15 m	8 m
	Angophora floribunda	Rough barked Apple	100 L	15 m	8 m
	Corymbia maculata	Spotted Gum	75 L	25 m	10 m
	Eucalyptus moluccana	Grey Box	75 L	25 m	10 m
	Eucalyptus fibrosa	Red Ironbark	75 L	25 m	10 m
	Eucalyptus crebra	Grey Gum	75 L	30 m	10 m
	Eucalyptus tereticornis	Forest Red Gum	75 L	30 m	10 m
	LARGE CANOPY TREE TREES / FEATURE TREES				
	Brachychiton rupestris	Queensland Bottle Tree	100 L	10 m	5 m
	Eucalyptus sideroxylon	Red Ironbark	75 L	25 m	10 m
	Ficus Hillii	Hills Fig	200 L	35 m	15 m
	Lophostemon confertus	Brush Box	150 L	20 m	8 m
	Magnolia grandiflora	Southern Magnolia	200 L	25 m	10 m
	Quercus palustris	Pin Oak	100 L	15 m	8 m
	MEDIUM SIZED TREES /CUMBERLAND PLAIN WOODLAND SPECIES				
	Exocarpus cupressiformis	Native Cherry	25 L	6 - 8 m	4 m
	Melaleuca arnilaris	Bracelet Honey Myrtle	25 L	6 m	3 m
	Melaleuca decora	White Feather Honey myrtle	25 L	6 m	4 m
	Melaleuca linariifolia	Snow-in-Summer	25 L	10 m	8 m
	MEDIUM SIZED TREES / FEATURE TREES & DECIDUOUS				
	Acer x freemanii 'Jeffersred'	Autumn Blaze Maple	100 L	13 m	10 m
	Callistemon viminalis	Wheeping BottleBrush	10 L	7 m	3-5 m
	Elaeocarpus Eumundii	Eumundi Quandong	25 L	10 m	4 m
	Geijera parviflora	Native Willow	100 L	8 m	5 m
	Lagerstroemia indica 'Sioux'	Sioux Crape Myrtle	100 L	5 m	3 m
	Lagerstroemia indica x fauriei 'Natchez'	Natchez Crape Myrtle	100 L	8 m	6 m
	Magnolia grandiflora 'Little Gem'	Dwarf Bull Bay Magnolia	75 L	6-8 m	5 m
	Pyrus calleryana 'Bradford'	Ornamental Pear	100 L	12 m	3 m
	Sapium sebiferum	Chinese Tallow	100 L	8 m	8 m
	Tristaniopsis laurina 'Luscious'	Water Gum	75 L	12 m	5 m
	Waterhousea floribunda 'Green Avenue'	Weeping Lily Pilly	100 L	20 m	8 m
	SHRUBS / FEATURE SPECIES & OTHER NATIVE SPECIES				
	Callistemon 'Red Rover'	Bottlebrush	200 mm	1.2 m	2 m
	Callistemon Green John'	Bottlebrush	200 mm	1 m	1 m
	Doryanthes excelsa	Gymea Lily	300 mm	2-3 m	3 m
	Durrantha 'Sheenas Gold'	Durrantha 'Sheenas Gold'	200 mm	1 m	1 m
	Loropetalum chinensis 'Purple Pixie'	Chinese Fringe Flower - Dwarf	200 mm	1.2 m	1 m
	Macrozamia communis	Burrawang	200 mm	2 m	2.5 m
	Melaleuca thymifolia 'Purple Lace'	Thyme Honey Myrtle	200 mm	0.8 m	0.8 m
	Nandina Gulfstream	Sacred Bamboo	200 mm	1.2 m	1 m
	Raphiolepis indica 'Snow Maiden'	Indian Hawthorn	200 mm	1.2 m	1 m
	Rosmarinus officinalis 'Tuscan Blue'	Rosemary	200 mm	0.8 m	0.8 m
	Strelitzia reginae	Bird of Paradise	200 mm	1.5 m	2 m
	Westringia fruticosa 'Mundi'	Coastal Rosemary	200 mm	0.4 m	
	SHRUBS / CUMBERLAND PLAIN WOODLAND				
	Bursaria spinosa	Blackthorn	tube	2 m	1 m
	Dodonea viscosa	Hop Bush	tube	1.5 m	1 m
	Indigophera australis	Native Indigo	tube	1 m	0.5 m
	NATIVE GRASSES & GROUNDCOVERS / CUMBERLAND PLAIN WOODLAND				
	Austrodanthonia tenuior	Wallaby Grass	tube		
	Dianella longifolia	Blue Flax Lily	tube		
	Lomandra longifolia	Mat Rush	tube		
	Lomandra multiflora	Many flowered Mat Rush	tube		
	Hardenbergia violacea	Native Sarsparilla	tube		
	Microlaena stipoides	Weeping Grass	tube		
	Poa labillardieri	Tussock Grass	tube		
	Themeda australis	Kangaroo Grass	tube		
	GROUNDCOVERS				
	Atriplex sp.	Saltbush	tube	0.3 m	0.8 m
	Carpobrotus glaucescens	Pigface	140 mm	0.2 m	2 m
	Brachyscome multifida	Rocky Daisy	140 mm	0.1 m	0.4 m
	Lomandra confertifolia "pallida"	Lime Turf	140 mm	0.5 m	0.6 m
	Dianella tasmanica	Blue Flax Lily 'Tas Red'	140 mm	0.4 m	0.4 m
	Dichondra repens	Kidney weed	140 mm	0.05 m	
	Gazania 'Double Gold'	Sterile Gazania	140 mm	0.2 m	1 m
	Juniperus conferta	Shore Juniper	140 mm	0.3 m	2 m
	Liriope muscari 'Amethyst'	Liriope	140 mm	0.4 m	0.4 m
	Myoporum parvifolium 'Yareena'	Creeping Boobialla	140 mm	0.4 m	3 m
	Pandorea jasminoides	Bower Wine	140 mm	climber	

PROPOSED PLANT SPECIES

ST ANTHONY OF PADUA , AUSTRAL

LANDSCAPE MASTER PLAN

CONCEPT PROPOSAL

L-MP08

ISSUE J

MARCH 2020





LANDSCAPE MASTER PLAN - PROPOSED PLANTING SCHEME

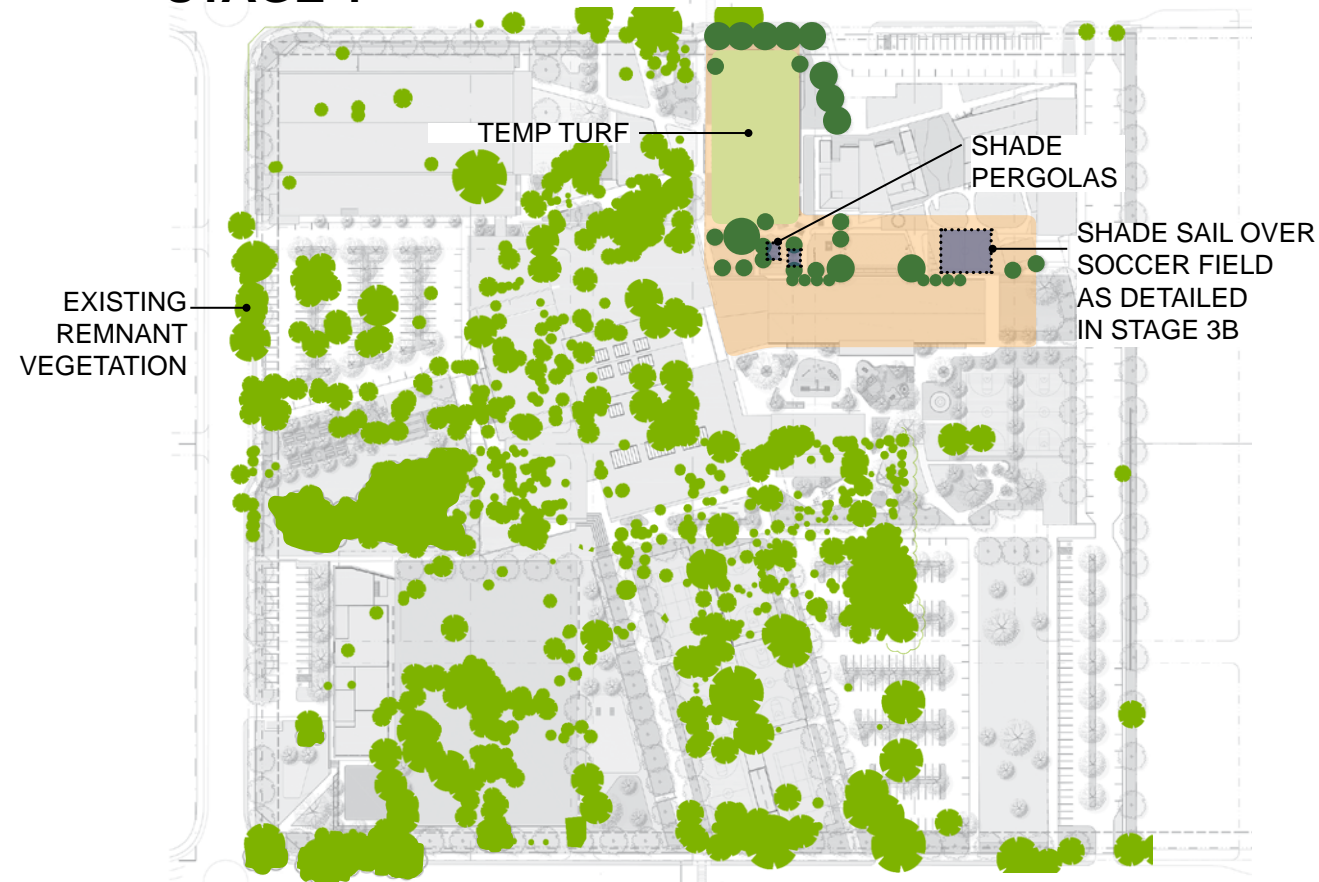
ST ANTHONY OF PADUA , AUSTRAL

CONCEPT PROPOSAL
L - MP 09 issue J

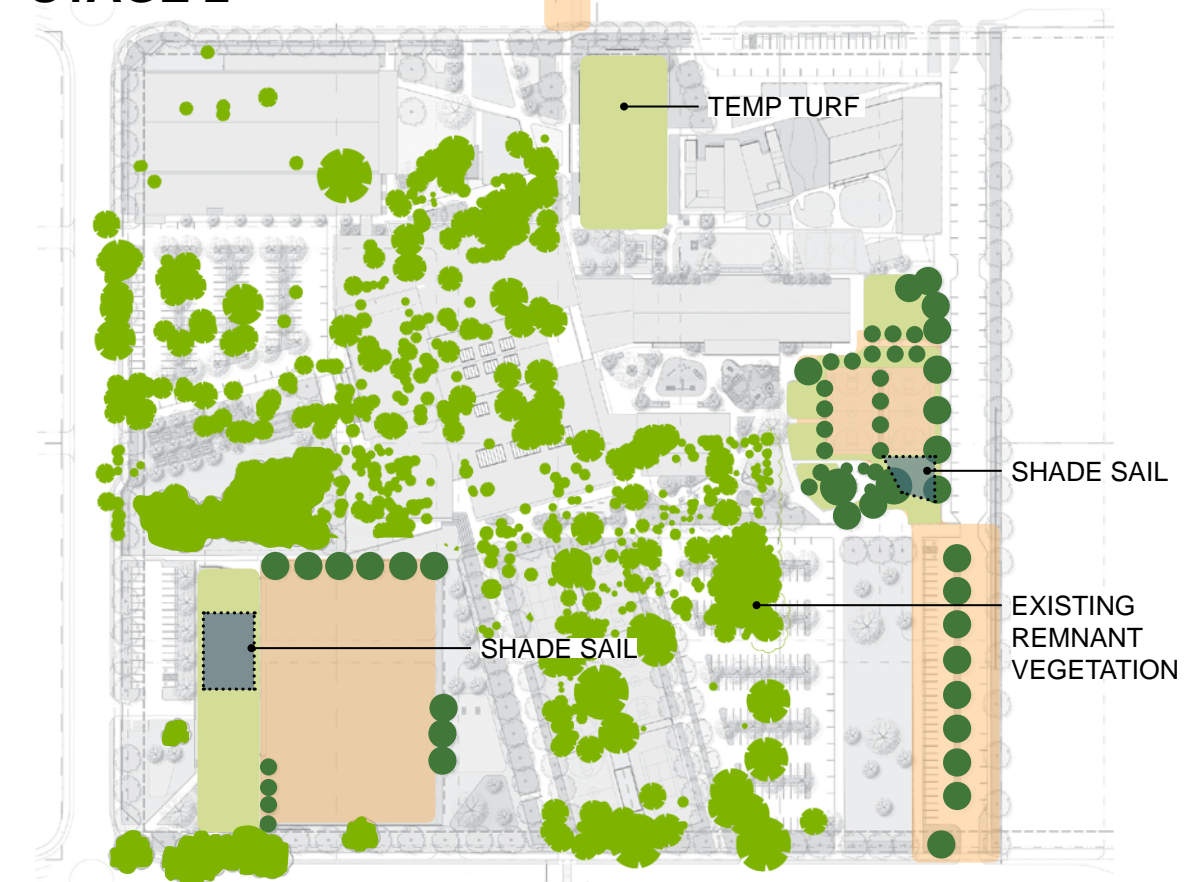
SCALE 1:700 @ A1
0 5m 10m 20m 40m
MARCH 2020



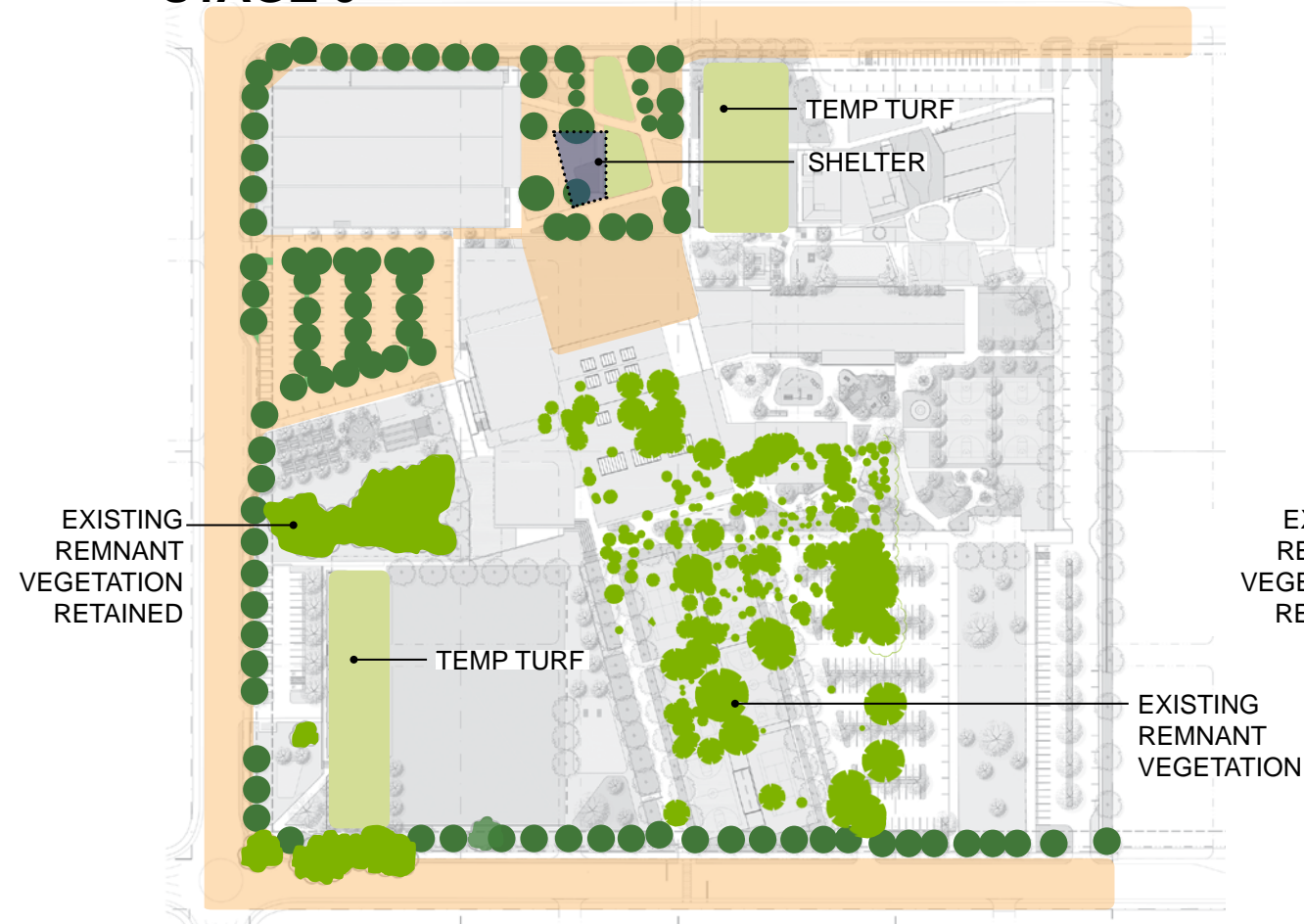
STAGE 1



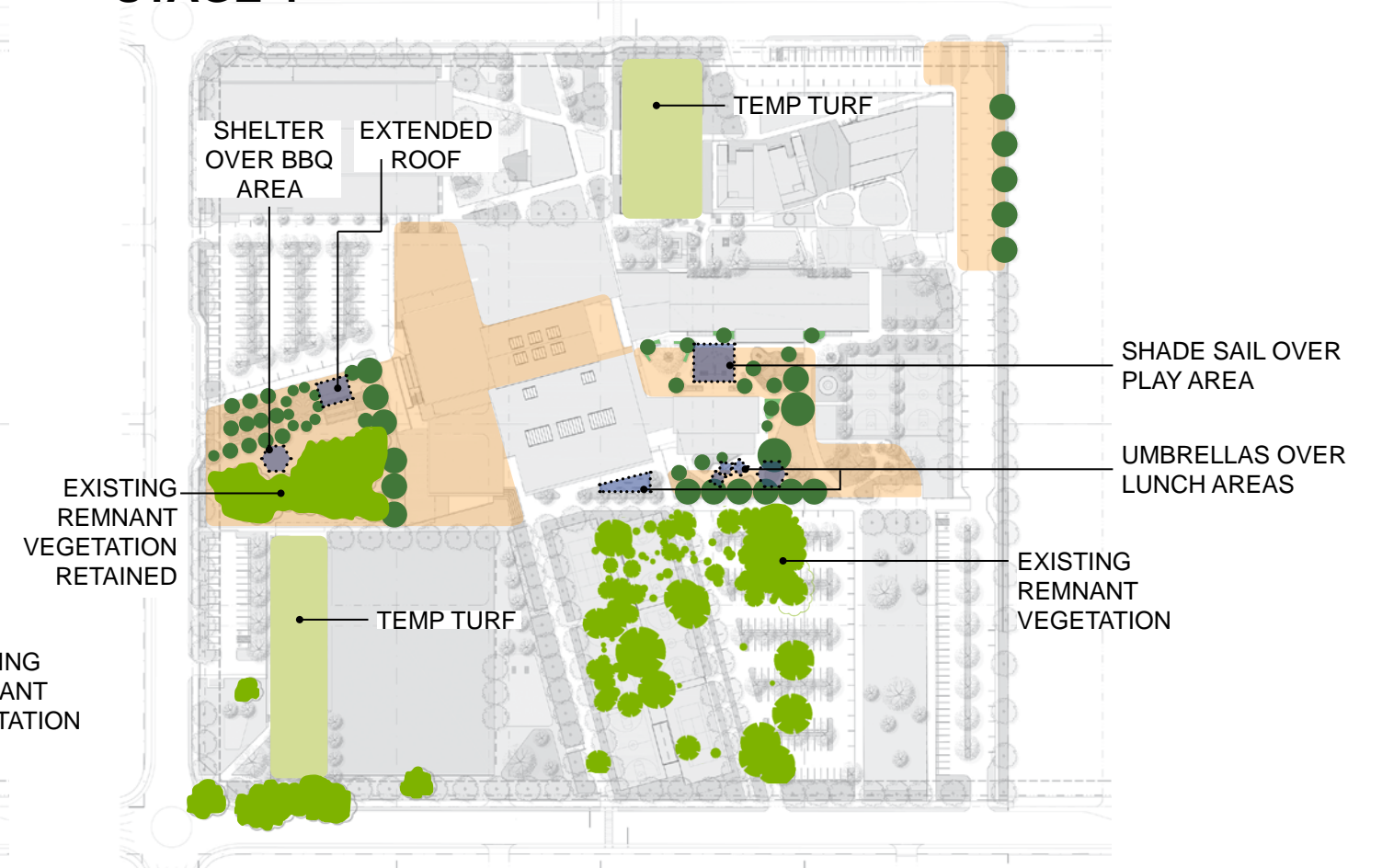
STAGE 2



STAGE 3



STAGE 4



LANDSCAPE MASTER PLAN

ST ANTHONY OF PADUA , AUSTRAL

STAGING & SHADING DIAGRAM

L - MP 10 issue J

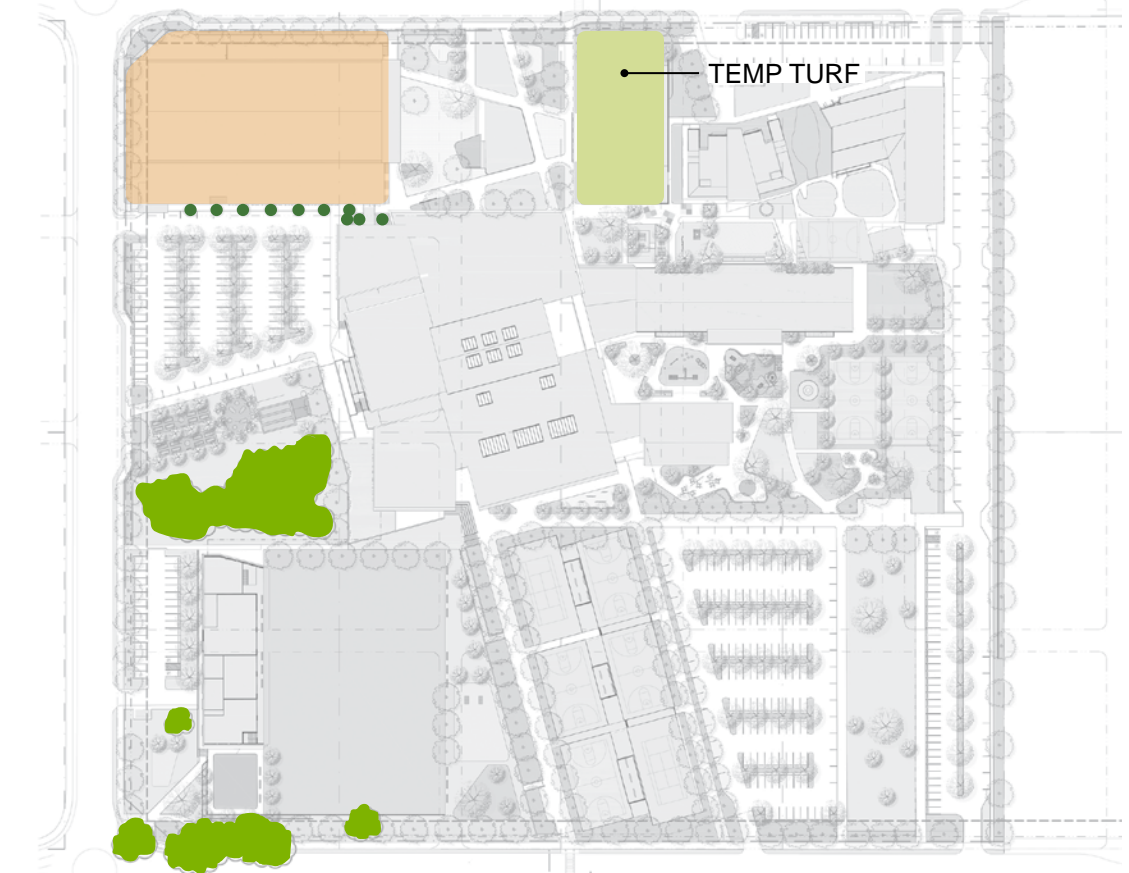
MARCH 2020



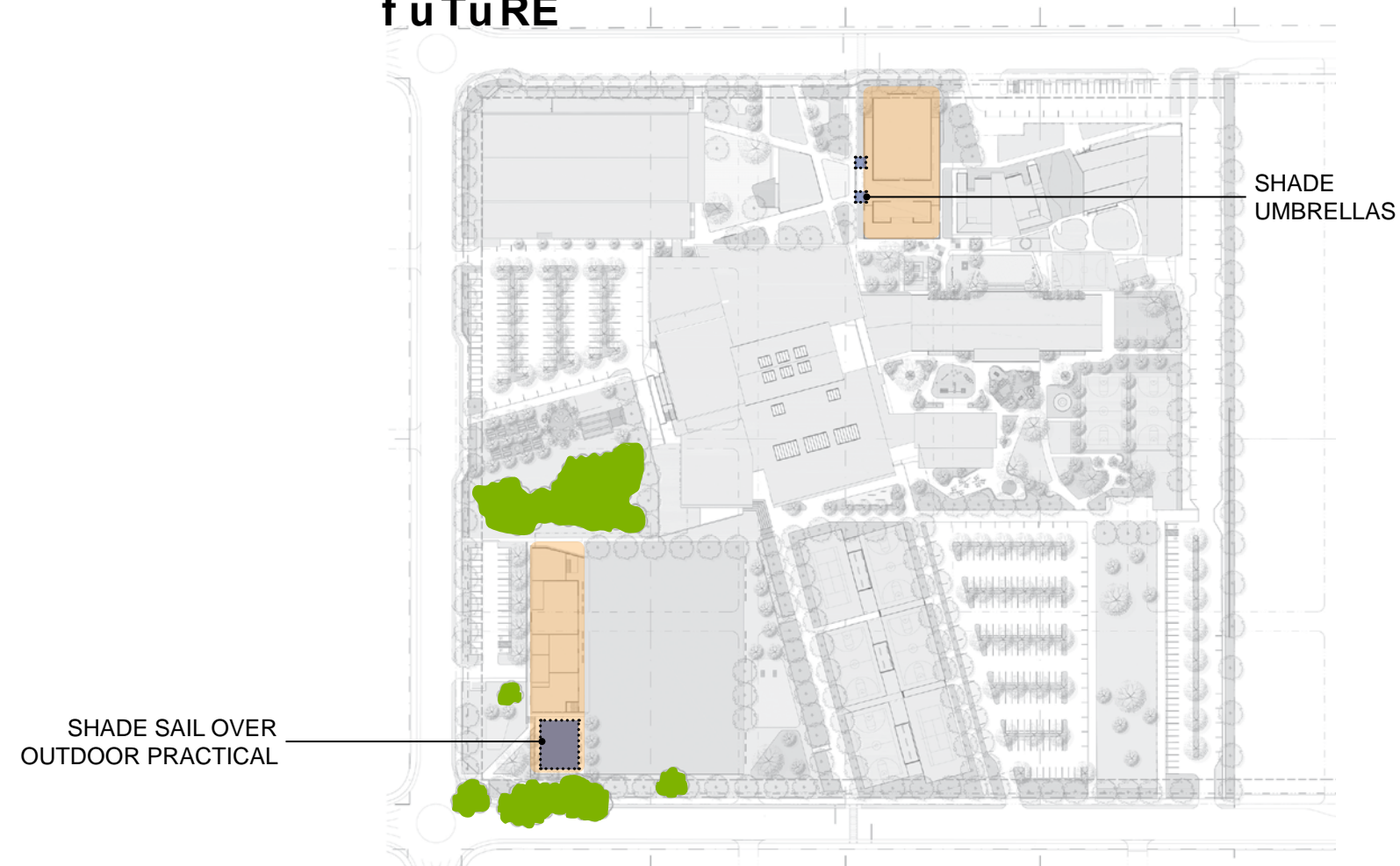
STAGE 5



STAGE 6



f uTuRE



LANDSCAPE MASTER PLAN

ST ANTHONY OF PADUA , AUSTRAL

STAGING & SHADING DIAGRAM

L - MP 11 issue J

MARCH 2020

