

# BUDAWANG SCHOOL

## STATE SIGNIFICANT DEVELOPMENT APPLICATION

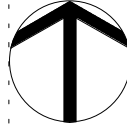
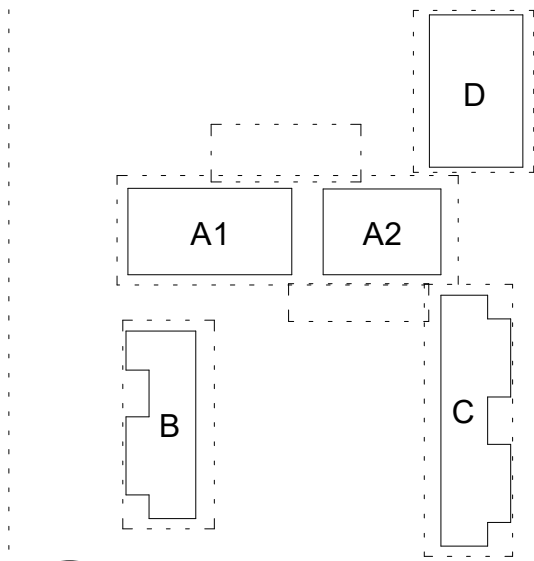
### ARCHITECTURAL DRAWINGS

ARCHITECTURAL DRAWING LIST - GROUPGSA		
Sheet Number	Sheet Name	Current Revision
0000 GENERAL		
SSDA-0000	COVER SHEET / DRAWING INDEX	E
1100 SITE PLANS		
SSDA-1110	SITE LOCATION PLAN	E
SSDA-1111	SITE PLAN - EXISTING	D
SSDA-1120	DEMOLITION PLAN	E
2000 GENERAL ARRANGEMENT PLANS		
SSDA-2000	SITE PLAN	I
SSDA-2001	BLOCK A PLAN	F
SSDA-2002	BLOCK B PLAN	F
SSDA-2003	BLOCK C PLAN	F
SSDA-2004	HYDROTHERAPY PLAN	G
SSDA-2010	SITE ROOF PLAN	F
SSDA-2011	BLOCK A ROOF PLAN	E
SSDA-2012	BLOCK B ROOF PLAN	D
SSDA-2013	BLOCK C ROOF PLAN	E
SSDA-2014	HYDROTHERAPY ROOF PLAN	E
SSDA-2150	SHADOW DIAGRAMS - WINTER	F
SSDA-2151	SHADOW DIAGRAMS - SUMMER	F
2800 SIGNAGE / WAYFINDING PLANS		
SSDA-2800	SIGNAGE PLAN	C
SSDA-2801	SIGNAGE PLAN.	A
3000 ELEVATIONS		
SSDA-3005	STREET ELEVATION	C
SSDA-3010	BLOCK A ELEVATIONS SHEET 01	F
SSDA-3011	BLOCK A ELEVATIONS SHEET 02	E
SSDA-3012	BLOCK B ELEVATIONS	E
SSDA-3013	BLOCK C ELEVATIONS	E
SSDA-3014	BLOCK D ELEVATIONS	A
SSDA-3020	MATERIALS BOARD	B
3100 SECTIONS		
SSDA-3100	SITE SECTIONS	D
SSDA-3110	BLOCK A SECTIONS	F
SSDA-3111	BLOCK B SECTIONS	D
SSDA-3112	BLOCK C SECTIONS	E
SSDA-3113	BLOCK D SECTIONS	D
3200 WALL SECTIONS		
SSDA-3201	CLADDING, WINDOW AND FLOOR DETAILS	C
SSDA-3202	CLADDING, WINDOW AND FLOOR DETAILS	C
3300 PERSPECTIVE VIEWS		
SSDA-3300	PERSPECTIVES	B
SSDA-3301	PERSPECTIVES 2	B
SSDA-3302	PERSPECTIVES 3	C



LOCATION PLAN : NOT TO SCALE

Amendments		
Issue	Description	Date
A	ISSUE FOR INFORMATION	12/03/2021
B	ISSUE FOR INFORMATION	23/03/2021
C	ISSUE FOR SSDA	08/04/2021
D	ISSUE FOR SSDA	28/07/2021
E	ISSUE FOR SSDA - TREES AMENDED	08/09/2021



#### DA SUBMISSION

##### Project Management

**SJA**  
Level 1, 109 Pitt Street, NSW, 2000  
02 936 5000

##### Structural and Civil

**HENRY & HYMAS** (Consulting Engineers)  
Suite 2.01, 828 Pacific Highway, Gordon, NSW, 2072  
02 9417 8400

##### Building Services

**INTELLE BUILDING SERVICES**  
Level 2, 350 Kent Street, Sydney, NSW, 2000  
02 9772 3900

##### BCA Consultant

**STEVE WATSON & PARTNERS**  
Level 17, 456 Kent Street, Sydney, NSW, 2000  
02 9283 6555

##### Contractor

**ZAUNER CONSTRUCTION**  
Suite 10, 132 Princes Highway, Ulladulla, NSW, 2539  
PO Box 271  
02 9283 6555

##### Client

**SCHOOL INFRASTRUCTURE NSW**  
Level 8, 259 George Street, Sydney, NSW, 2000  
1300 482 651



Group GSA Pty Ltd ABN 76 002 113 779  
Level 7, 80 William St East Sydney NSW  
Australia 2011  
www.groupgsa.com

T +612 9361 4144 F +612 9332 3458

architecture interior design urban design landscape  
nom architect Lisa-Maree Carrigan 20773  
Project Title

#### BUDAWANG SCHOOL

##### Drawing Title

#### COVER SHEET / DRAWING INDEX

Scale NOT TO SCALE

Drawing Created (date) 10/12/20

Drawing Created (by) CH

Plotted and checked by RF

Verified RK

Approved RK

Project No Drawing No Issue

190941 SSDA-0000 E

This drawing is the copyright of Group GSA Pty Ltd and may not be altered, reproduced or transmitted in any form or by any means in part or in whole without the written permission of Group GSA Pty Ltd. All levels and dimensions are to be checked and verified on site prior to the commencement of any work, making of shop drawings or fabrication of components.  
Do not scale drawings. Use figured Dimensions.

8/08/2021 14:03 PM

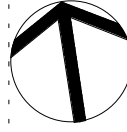
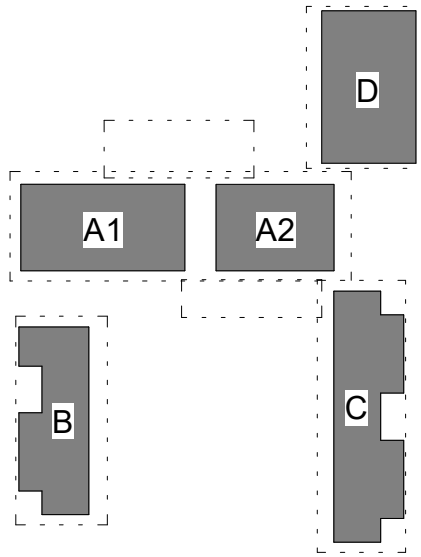




SITE LOCATION LEGEND

- NEW PATHWAYS
- NEW BUILDINGS
- ROADS
- PARKING SPACES
- BUDAWANG SCHOOL BOUNDARY
- DOE OWNERSHIP BOUNDARY
- EXISTING SEWERLINE
- EXISTING TREES
- PROPOSED TREES
- EXISTING TREES RETAINED WITHIN BUDAWANG SCHOOL BOUNDARY
- TREES OUTSIDE DOE BOUNDARY

Amendments		
Issue	Description	Date
A	ISSUE FOR INFORMATION	12/03/2021
B	ISSUE FOR INFORMATION	23/03/2021
C	ISSUE FOR SSDA	08/04/2021
D	ISSUE FOR SSDA	28/07/2021
E	ISSUE FOR SSDA - TREES AMENDED	08/09/2021



DA SUBMISSION

Project Management	
SJA	
Level 1, 109 Pitt Street, NSW, 2000	
02 9336 5000	
Structural and Civil	
HENRY & HYMAS	(Consulting Engineers)
Suite 2.01, 828 Pacific Highway, Gordon, NSW, 2072	
02 9417 8400	
Building Services	
INTELLE BUILDING SERVICES	
Level 2, 350 Kent Street, Sydney, NSW, 2000	
02 9772 3600	
BCA Consultant	
STEVE WATSON & PARTNERS	
Level 17, 456 Kent Street, Sydney, NSW, 2000	
02 9283 6555	
Contractor	
ZAUNER CONSTRUCTION	
Suite 10, 132 Princes Highway, Ulladulla, NSW, 2539	
PO Box 271	
02 9283 6555	
Client	
SCHOOL INFRASTRUCTURE NSW	
Level 8, 259 George Street, Sydney, NSW, 2000	
1300 482 651	
Group GSA	
Group GSA Pty Ltd ABN 76 002 113 779	
Level 7, 80 William St East Sydney NSW	
Australia 2011	
www.groupgsa.com	
T +612 9361 4144 F +612 9332 3458	
architecture interior design urban design landscape	
nom architect Lisa-Maree Carrigan 20773	
Project Title	

BUDAWANG SCHOOL

Drawing Title

SITE LOCATION PLAN

Scale 1:1000

Drawing Created (date)

Drawing Created (by) CH

Plotted and checked by RF

Verified RF

Approved RK

Project No Drawing No Issue

190941 SSDA-1110 E

This drawing is the copyright of Group GSA Pty Ltd and may not be altered, reproduced or transmitted in any form or by any means in part or in whole without the written permission of Group GSA Pty Ltd. All levels and dimensions are to be checked and verified on site prior to the commencement of any work, making of shop drawings or fabrication of components. Do not scale drawings. Use figured Dimensions.

1 SITE PLAN  
1:1000







Amendments		
Issue	Description	Date
A	ISSUE FOR INFORMATION	12/03/2021
B	ISSUE FOR INFORMATION	23/03/2021
C	ISSUE FOR SSDA	08/04/2021
D	ISSUE FOR SSDA - TREES AMENDED	08/09/2021

A1A2B

C

D

DA SUBMISSION

Project Management

SJA  
Level 1, 109 Pitt Street, NSW, 2000  
02 9236 5000

Structural and Civil

HENRY & HYMAS (Consulting Engineers)  
Suite 2.01, 828 Pacific Highway, Gordon, NSW, 2072  
02 9417 8400

Building Services

INTELLE BUILDING SERVICES  
Level 2, 350 Kent Street, Sydney, NSW, 2000  
02 9772 3600

BCA Consultant

STEVE WATSON & PARTNERS  
Level 17, 456 Kent Street, Sydney, NSW, 2000  
02 9283 6555

Contractor

ZAUNER CONSTRUCTION  
Suite 10, 132 Princes Highway, Ulladulla, NSW, 2539  
PO Box 271  
02 9283 6555

Client

SCHOOL INFRASTRUCTURE NSW  
Level 8, 259 George Street, Sydney, NSW, 2000  
1300 482 651

GROUP GSA  
Group GSA Pty Ltd ABN 76 002 113 779  
Level 7, 80 William St East Sydney NSW  
Australia 2011  
www.groupgsa.com  
T +612 9361 4144 F +612 9332 3458  
architecture interior design urban design landscape  
nom architect Lisa-Maree Carrigan 20773  
Project Title

BUDAWANG SCHOOL

Drawing Title

SITE PLAN - EXISTING

Scale 1:250

Drawing Created (date) 02/24/21

Drawing Created (by) CH

Plotted and checked by RF

Verified RF

Approved RK

Project No 190941 Drawing No SSDA-1111 Issue D

This drawing is the copyright of Group GSA Pty Ltd and may not be altered, reproduced or transmitted in any form or by any means in part or in whole without the written permission of Group GSA Pty Ltd. All levels and dimensions are to be checked and verified on site prior to the commencement of any work, making of shop drawings or fabrication of components.  
Do not scale drawings. Use figured Dimensions.

8/08/2021 14:22 PM







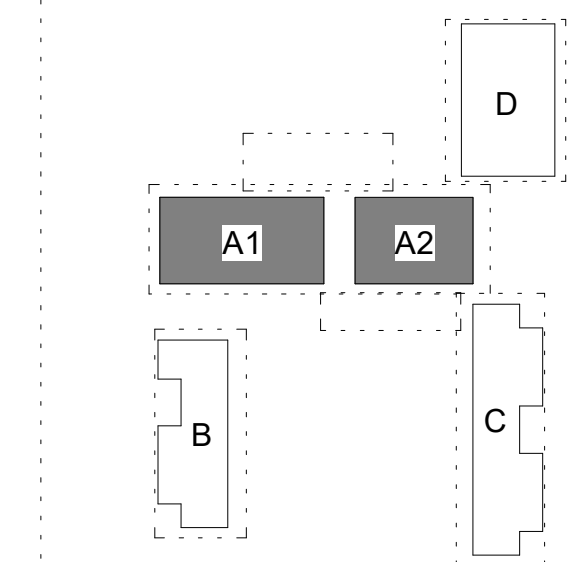






- PLAN LEGEND**
- BUDAWANG SCHOOL BOUNDARY
  - EXISTING TREES
  - PROPOSED TREES
  - BOUNDARY TREES
  - DOE OWNERSHIP
  - LP LIGHT POLE
  - EXISTING SEWERLINE

Amendments		
Issue	Description	Date
A	ISSUE FOR INFORMATION	04/12/2020
B	ISSUE FOR INFORMATION	12/03/2021
C	ISSUE FOR INFORMATION	23/03/2021
D	ISSUE FOR SSDA	08/04/2021
E	ISSUE FOR SSDA	28/07/2021
F	ISSUE FOR SSDA - TREES AMENDED	08/09/2021



**DA SUBMISSION**

Project Management	
SJA	Level 1, 109 Pitt Street, NSW, 2000 02 9236 5000
Structural and Civil	
HENRY & HYMAS	(Consulting Engineers) Suite 2.01, 828 Pacific Highway, Gordon, NSW, 2072 02 9417 8400
Building Services	
INTELLE BUILDING SERVICES	Level 2, 350 Kent Street, Sydney, NSW, 2000 02 9772 3600
BCA Consultant	
STEVE WATSON & PARTNERS	Level 17, 456 Kent Street, Sydney, NSW, 2000 02 9283 6555
Contractor	
ZAUNER CONSTRUCTION	Suite 10, 132 Princes Highway, Ulladulla, NSW, 2539 PO Box 271 02 9283 6555
Client	
SCHOOL INFRASTRUCTURE NSW	Level 8, 259 George Street, Sydney, NSW, 2000 1300 482 651
GROUP GSA	
Group GSA Pty Ltd ABN 76 002 113 779 Level 7, 80 William St East Sydney NSW Australia 2011 www.groupgsa.com	
T +612 9361 4144 F +612 9332 3458	
architecture interior design urban design landscape nom architect Lisa-Maree Carrigan 20773	
Project Title	

**BUDAWANG SCHOOL**

Drawing Title

**BLOCK A PLAN**

Scale	1 : 100	
Drawing Created (date)		
Drawing Created (by)	TKD	
Plotted and checked by	RF	
Verified	RF	
Approved	RK	
Project No	Drawing No	Issue

**190941 SSDA-2001 F**

This drawing is the copyright of Group GSA Pty Ltd and may not be altered, reproduced or transmitted in any form or by any means in part or in whole without the written permission of Group GSA Pty Ltd. All levels and dimensions are to be checked and verified on site prior to the commencement of any work, making of shop drawings or fabrication of components.  
Do not scale drawings. Use figured Dimensions.

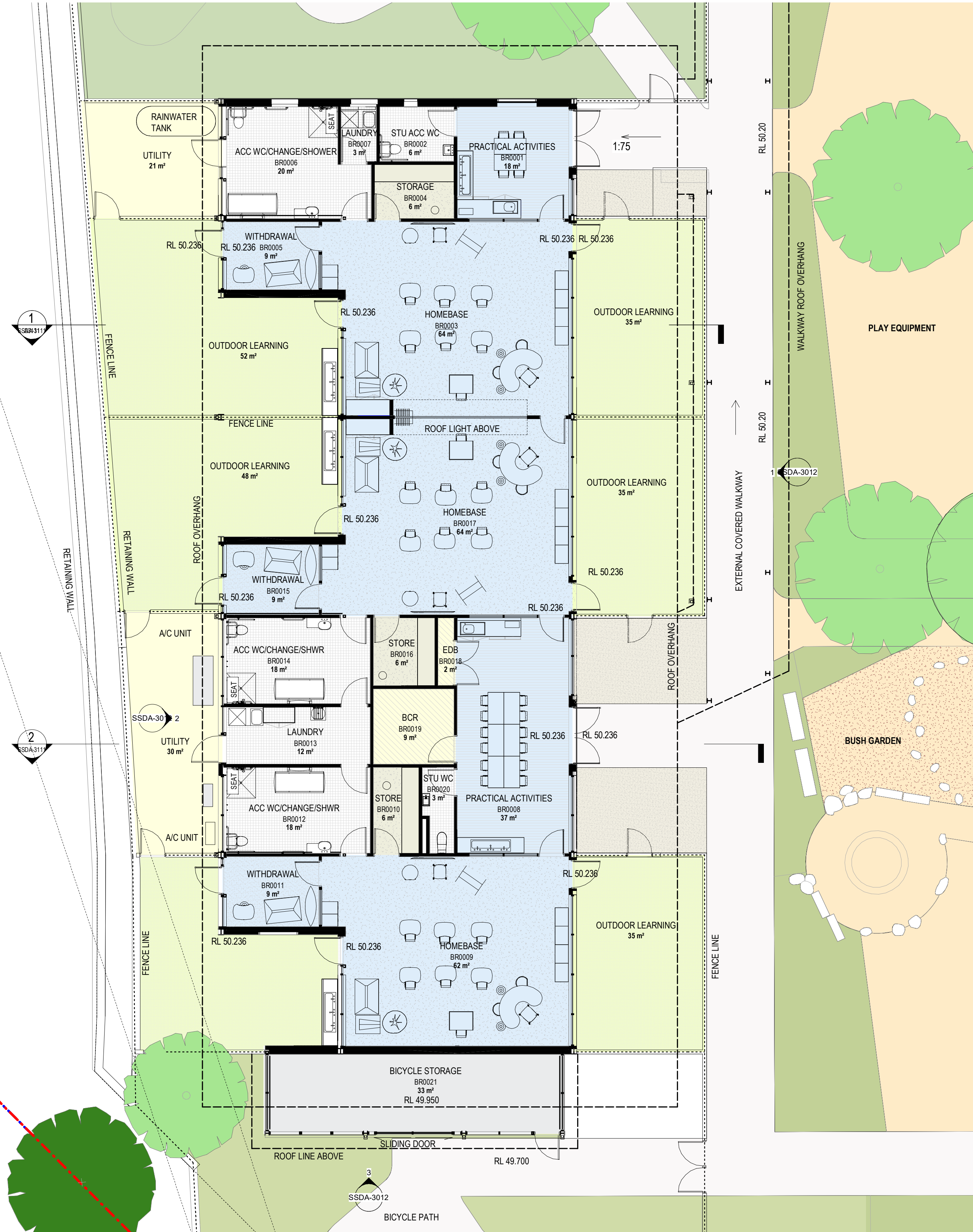
**1 BLOCK A PLAN SSD**  
1 : 100



8/09/2021 1:52:50 PM

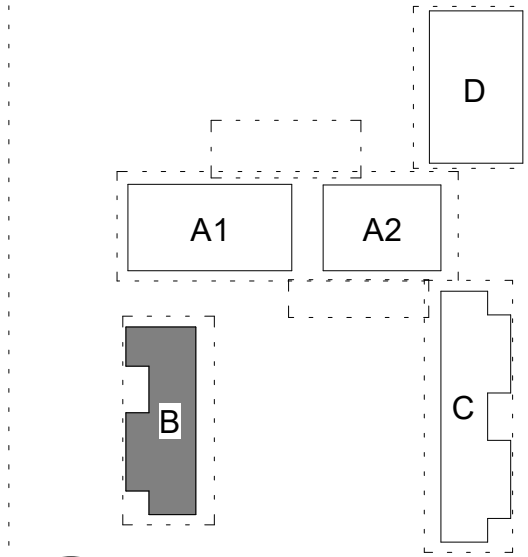


1 BLOCK B PLAN  
1:100



- PLAN LEGEND**
- BUDAWANG SCHOOL BOUNDARY
  - EXISTING TREES
  - PROPOSED TREES
  - BOUNDARY TREES
  - DOE OWNERSHIP
  - LIGHT POLE
  - EXISTING SEWERLINE

Issue	Description	Date
A	ISSUE FOR INFORMATION	04/12/2020
B	ISSUE FOR INFORMATION	12/03/2021
C	ISSUE FOR INFORMATION	23/03/2021
D	ISSUE FOR SSDA	08/04/2021
E	ISSUE FOR SSDA	28/07/2021
F	ISSUE FOR SSDA - TREES AMENDED	08/09/2021



DA SUBMISSION

Project Management

SJA  
Level 1, 109 Pitt Street, NSW, 2000  
02 9236 5000

Structural and Civil

HENRY & HYMAS (Consulting Engineers)  
Suite 2.01, 828 Pacific Highway, Gordon, NSW, 2072  
02 9417 8400

Building Services

INTELLE BUILDING SERVICES  
Level 2, 350 Kent Street, Sydney, NSW, 2000  
02 9772 3600

BCA Consultant

STEVE WATSON & PARTNERS  
Level 17, 456 Kent Street, Sydney, NSW, 2000  
02 9283 6555

Contractor

ZAUNER CONSTRUCTION  
Suite 10, 132 Princes Highway, Ulladulla, NSW, 2539  
PO Box 271  
02 9283 6555

Client

SCHOOL INFRASTRUCTURE NSW  
Level 8, 259 George Street, Sydney, NSW, 2000  
1300 482 651



Group GSA Pty Ltd ABN 76 002 113 779  
Level 7, 80 William St East Sydney NSW  
Australia 2011  
www.groupgsa.com

T +612 9361 4144 F +612 9332 3458

architecture interior design urban design landscape  
nom architect Lisa-Maree Carrigan 20773  
Project Title

BUDAWANG SCHOOL

Drawing Title

BLOCK B PLAN

Scale 1:100

Drawing Created (date)

Drawing Created (by) CH

Plotted and checked by RF

Verified RF

Approved RK

Project No Drawing No Issue

190941 SSDA-2002 F

This drawing is the copyright of Group GSA Pty Ltd and may not be altered, reproduced or transmitted in any form or by any means in part or in whole without the written permission of Group GSA Pty Ltd. All levels and dimensions are to be checked and verified on site prior to the commencement of any work, making of shop drawings or fabrication of components.  
Do not scale drawings. Use figured Dimensions.



8/09/2021 15:32 PM



1 BLOCK C PLAN

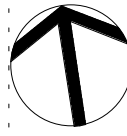
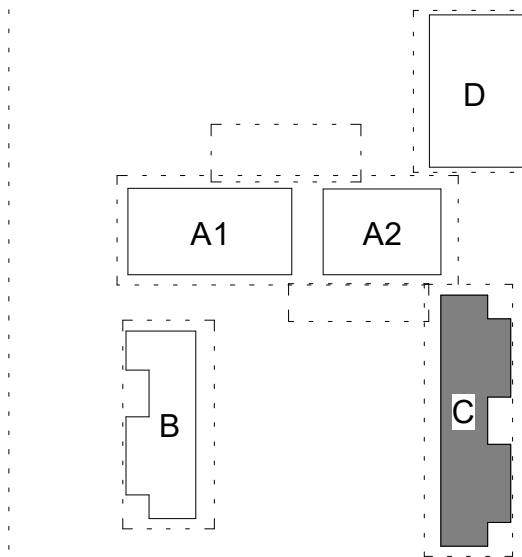
1:100



PLAN LEGEND

- BUDAWANG SCHOOL BOUNDARY
- EXISTING TREES
- PROPOSED TREES
- BOUNDARY TREES
- DOE OWNERSHIP
- LP LIGHT POLE
- EXISTING SEWERLINE

Amendments		
Issue	Description	Date
A	ISSUE FOR INFORMATION	04/12/2020
B	ISSUE FOR INFORMATION	12/03/2021
C	ISSUE FOR INFORMATION	23/03/2021
D	ISSUE FOR SSDA	08/04/2021
E	ISSUE FOR SSDA	28/07/2021
F	ISSUE FOR SSDA - TREES AMENDED	08/09/2021



DA SUBMISSION

Project Management

SJA  
Level 1, 109 Pitt Street, NSW, 2000  
02 9336 5000

Structural and Civil

HENRY & HYMAS (Consulting Engineers)  
Suite 2.01, 828 Pacific Highway, Gordon, NSW, 2072  
02 9417 8400

Building Services

INTELLE BUILDING SERVICES  
Level 2, 350 Kent Street, Sydney, NSW, 2000  
02 9772 3600

BCA Consultant

STEVE WATSON & PARTNERS  
Level 17, 456 Kent Street, Sydney, NSW, 2000  
02 9283 6555

Contractor

ZAUNER CONSTRUCTION  
Suite 10, 132 Princes Highway, Ulladulla, NSW, 2539  
PO Box 271  
02 9283 6555



Client

SCHOOL INFRASTRUCTURE NSW  
Level 8, 259 George Street, Sydney, NSW, 2000  
1300 482 651



Group GSA Pty Ltd ABN 76 002 113 779  
Level 7, 80 William St East Sydney NSW  
Australia 2011  
www.groupgsa.com

T +612 9361 4144 F +612 9332 3458

architecture interior design urban design landscape  
nom architect Lisa-Maree Carrigan 20773  
Project Title

BUDAWANG SCHOOL

Drawing Title

BLOCK C PLAN

Scale 1:100

Drawing Created (date)

Drawing Created (by) CH

Plotted and checked by RF

Verified RF

Approved RK

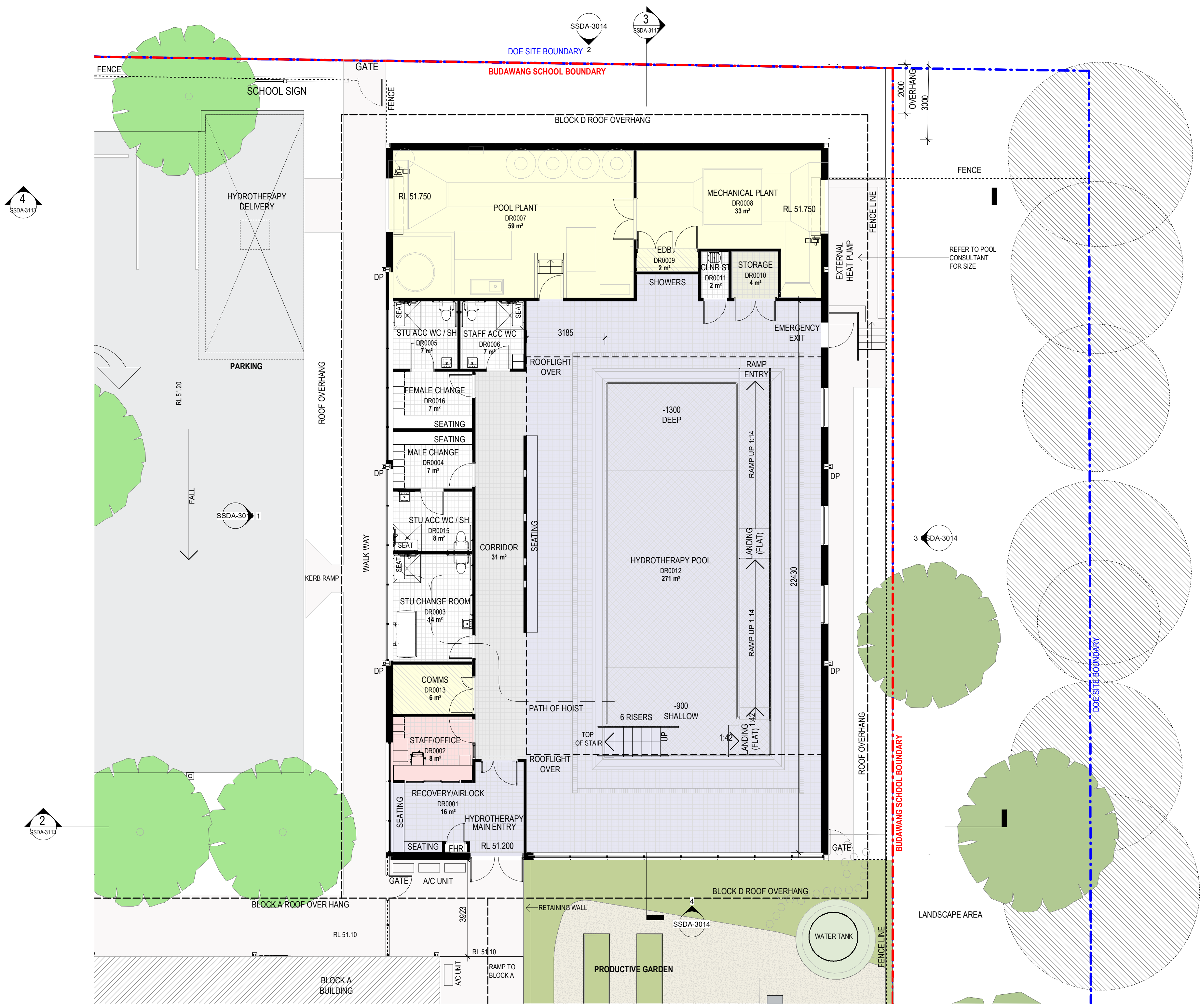
Project No Drawing No Issue

190941 SSDA-2003 F

This drawing is the copyright of Group GSA Pty Ltd and may not be altered, reproduced or transmitted in any form or by any means in part or in whole without the written permission of Group GSA Pty Ltd. All levels and dimensions are to be checked and verified on site prior to the commencement of any work, making of shop drawings or fabrication of components.  
Do not scale drawings. Use figured Dimensions.

8/09/2021 15:24 PM





1 BLOCK D PLAN  
1:100

- PLAN LEGEND**
- BUDAWANG SCHOOL BOUNDARY
  - EXISTING TREES
  - PROPOSED TREES
  - BOUNDARY TREES
  - DOE OWNERSHIP
  - LP LIGHT POLE
  - EXISTING SEWERLINE

Amendments		
Issue	Description	Date
A	ISSUE FOR INFORMATION	04/12/2020
B	ISSUE FOR INFORMATION	12/03/2021
C	ISSUE FOR INFORMATION	23/03/2021
D	ISSUE FOR SSDA	08/04/2021
E	ISSUE FOR SSDA	20/04/2021
F	ISSUE FOR SSDA	28/07/2021
G	ISSUE FOR SSDA - TREES AMENDED	08/09/2021

**DA SUBMISSION**

Project Management  
**SJA**  
Level 1, 109 Pitt Street, NSW, 2000  
02 9336 5000

Structural and Civil  
**HENRY & HYMAS** (Consulting Engineers)  
Suite 2.01, 828 Pacific Highway, Gordon, NSW, 2072  
02 9417 8400

Building Services  
**INTELLE BUILDING SERVICES**  
Level 2, 350 Kent Street, Sydney, NSW, 2000  
02 9772 3600

BCA Consultant  
**STEVE WATSON & PARTNERS**  
Level 17, 456 Kent Street, Sydney, NSW, 2000  
02 9283 6555

Contractor  
**ZAUNER CONSTRUCTION**  
Suite 10, 132 Princes Highway, Ulladulla, NSW, 2539  
PO Box 271  
02 9283 6555

Client  
**SCHOOL INFRASTRUCTURE NSW**  
Level 8, 259 George Street, Sydney, NSW, 2000  
1300 482 851

**GROUP GSA**  
Group GSA Pty Ltd ABN 76 002 113 779  
Level 7, 80 William St East Sydney NSW  
Australia 2011  
www.groupgsa.com  
T +612 9361 4144 F +612 9332 3458  
architecture interior design urban design landscape  
nom architect Lisa-Maree Carrigan 20773  
Project Title

**BUDAWANG SCHOOL**

Drawing Title  
**HYDROTHERAPY PLAN**

Scale 1:100

Drawing Created (date)

Drawing Created (by) CH

Plotted and checked by RF

Verified RF

Approved RK

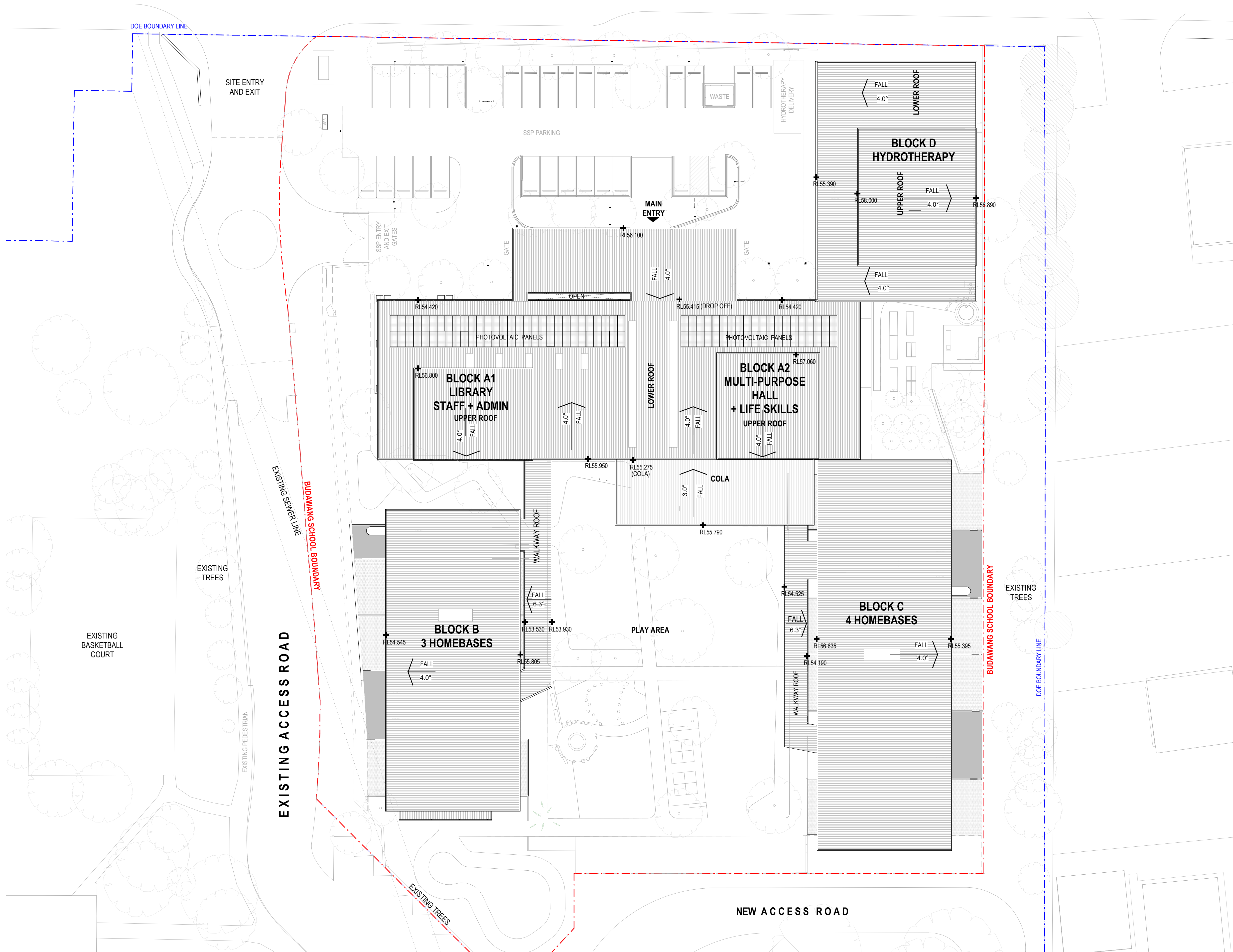
Project No Drawing No Issue

**190941 SSDA-2004 G**

This drawing is the copyright of Group GSA Pty Ltd and may not be altered, reproduced or transmitted in any form or by any means in part or in whole without the written permission of Group GSA Pty Ltd. All levels and dimensions are to be checked and verified on site prior to the commencement of any work, making of shop drawings or fabrication of components.  
Do not scale drawings. Use figured Dimensions.



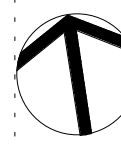
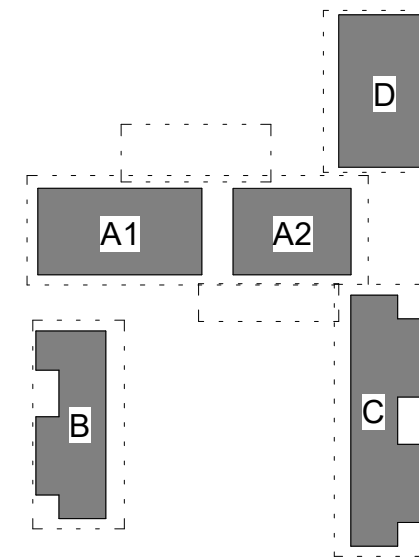
## CROOBYAR ROAD



1 SITE ROOF PLAN

1:250

Amendments		
Issue	Description	Date
A	ISSUE FOR INFORMATION	12/03/2021
B	ISSUE FOR INFORMATION	22/03/2021
C	ISSUE FOR INFORMATION	23/03/2021
D	ISSUE FOR SSDA	08/04/2021
E	ISSUE FOR SSDA	28/07/2021
F	ISSUE FOR SSDA - TREES AMENDED	08/09/2021



## DA SUBMISSION

## Project Management

SJA  
Level 1, 109 Pitt Street, NSW, 2000  
02 9236 5000

## Structural and Civil

HENRY & HYMAS (Consulting Engineers)  
Suite 2.01, 828 Pacific Highway, Gordon, NSW, 2072  
02 9417 8400

## Building Services

INTELLE BUILDING SERVICES  
Level 2, 350 Kent Street, Sydney, NSW, 2000  
02 9772 3600

## BCA Consultant

STEVE WATSON & PARTNERS  
Level 17, 456 Kent Street, Sydney, NSW, 2000  
02 9283 6555

## Contractor

ZAUNER CONSTRUCTION  
Suite 10, 132 Princes Highway, Ulladulla, NSW, 2539  
PO Box 271  
02 9283 6555



## Client

SCHOOL INFRASTRUCTURE NSW  
Level 8, 259 George Street, Sydney, NSW, 2000  
1300 482 651



Group GSA Pty Ltd ABN 76 002 113 779  
Level 7, 80 William St East Sydney NSW  
Australia 2011  
www.groupgsa.com

T +612 9361 4144 F +612 9332 3458

architecture interior design urban design landscape  
nom architect Lisa-Maree Carrigan 20773  
Project Title

## BUDAWANG SCHOOL

## Drawing Title

## SITE ROOF PLAN

Scale 1:250

Drawing Created (date) 02/24/21

Drawing Created (by) TKD

Plotted and checked by RF

Verified RF

Approved RK

Project No Drawing No Issue

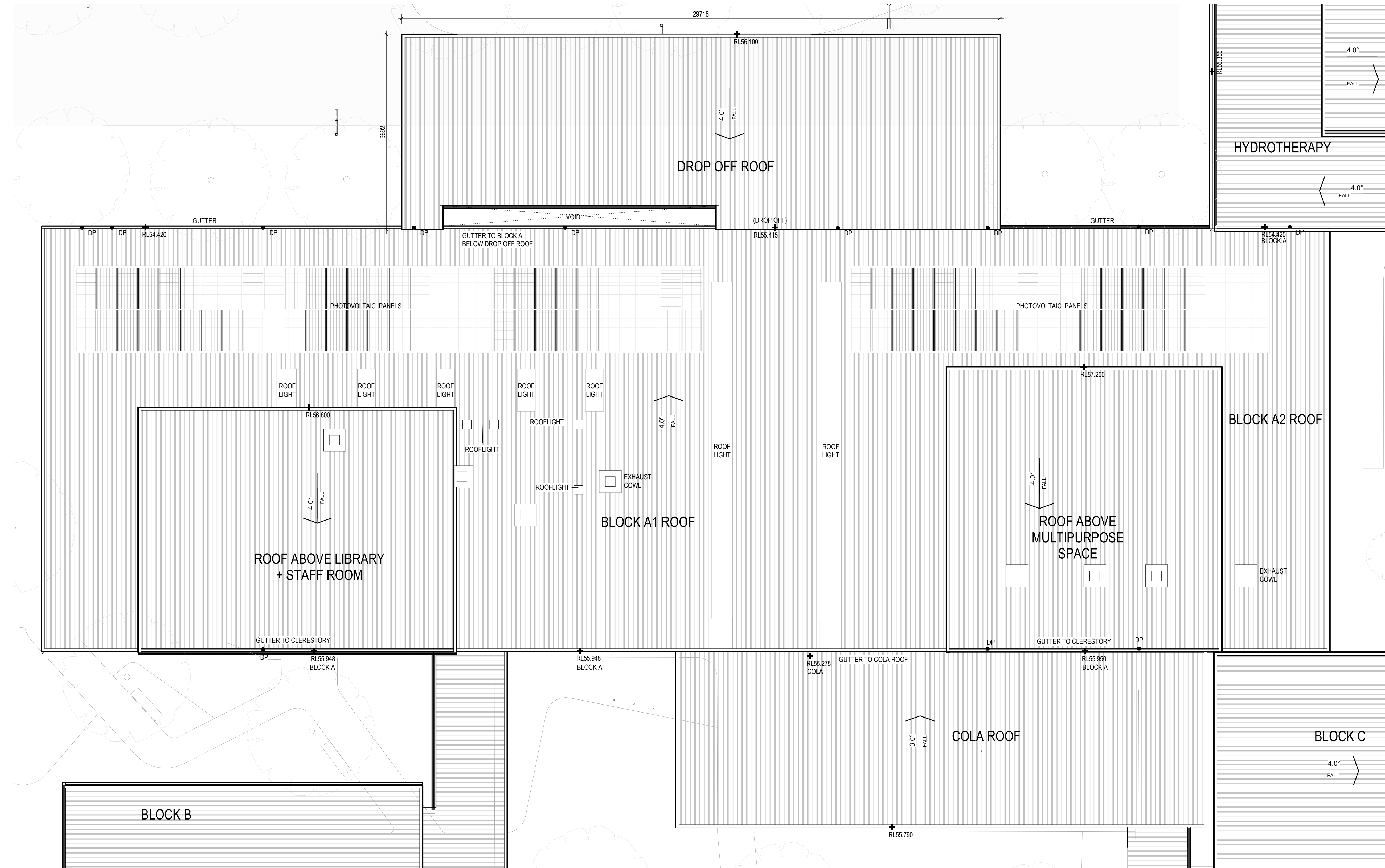
190941 SSDA-2010 F

This drawing is the copyright of Group GSA Pty Ltd and may not be altered, reproduced or transmitted in any form or by any means in part or in whole without the written permission of Group GSA Pty Ltd. All levels and dimensions are to be checked and verified on site prior to the commencement of any work, making of shop drawings or fabrication of components.  
Do not scale drawings. Use figured Dimensions.

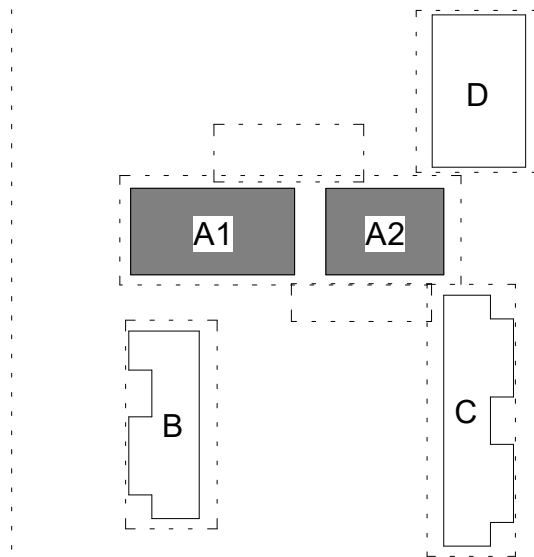
8/09/2021 15:27 PM



1 BLOCK A - ROOF PLAN  
1:100



Amendments		
Issue	Description	Date
A	ISSUE FOR INFORMATION	12/03/2021
B	ISSUE FOR INFORMATION	23/03/2021
C	ISSUE FOR SSDA	08/04/2021
D	ISSUE FOR SSDA	28/07/2021
E	ISSUE FOR SSDA - TREES AMENDED	08/09/2021



DA SUBMISSION

Project Management

SJA  
Level 1, 109 Pitt Street, NSW, 2000  
02 9236 5000

Structural and Civil

HENRY & HYMAS (Consulting Engineers)  
Suite 2.01, 828 Pacific Highway, Gordon, NSW, 2072  
02 9417 8400

Building Services

INTELLE BUILDING SERVICES  
Level 2, 350 Kent Street, Sydney, NSW, 2000  
02 9772 3600

BCA Consultant

STEVE WATSON & PARTNERS  
Level 17, 456 Kent Street, Sydney, NSW, 2000  
02 9283 6555

Contractor

ZAUNER CONSTRUCTION  
Suite 10, 132 Princes Highway, Ulladulla, NSW, 2539  
PO Box 271  
02 9283 6555



Client

SCHOOL INFRASTRUCTURE NSW  
Level 8, 259 George Street, Sydney, NSW, 2000  
1300 482 651



GROUP GSA

Group GSA Pty Ltd ABN 76 002 113 779  
Level 7, 80 William St East Sydney NSW  
Australia 2011  
www.groupgsa.com

T +612 9361 4144 F +612 9332 3458

architecture interior design urban design landscape  
nom architect Lisa-Maree Carrigan 20773  
Project Title

BUDAWANG SCHOOL

Drawing Title

BLOCK A ROOF PLAN

Scale 1:100

Drawing Created (date)

Drawing Created (by) TKD

Plotted and checked by RF

Verified RF

Approved RK

Project No Drawing No Issue

190941 SSDA-2011 E

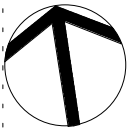
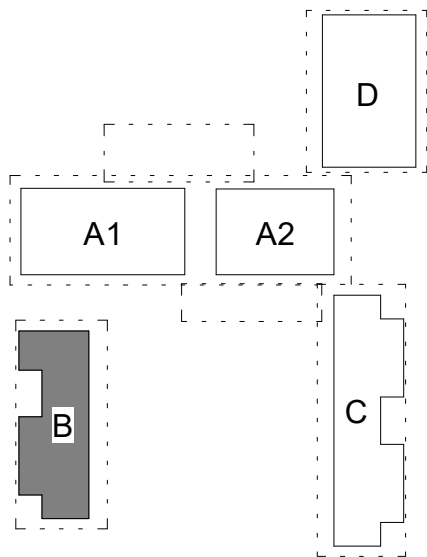
This drawing is the copyright of Group GSA Pty Ltd and may not be altered, reproduced or transmitted in any form or by any means in part or in whole without the written permission of Group GSA Pty Ltd. All levels and dimensions are to be checked and verified on site prior to the commencement of any work, making of shop drawings or fabrication of components.  
Do not scale drawings. Use figured Dimensions.

9/09/2021 9:26:11 AM





Amendments		
Issue	Description	Date
A	ISSUE FOR INFORMATION	12/03/2021
B	ISSUE FOR INFORMATION	23/03/2021
C	ISSUE FOR SSDA	08/04/2021
D	ISSUE FOR SSDA	28/07/2021



## DA SUBMISSION

### Project Management

**SJA**  
Level 1, 109 Pitt Street, NSW, 2000  
02 9236 5000

### Structural and Civil

**HENRY & HYMAS** (Consulting Engineers)  
Suite 2.01, 828 Pacific Highway, Gordon, NSW, 2072  
02 9417 8400

### Building Services

**INTELLE BUILDING SERVICES**  
Level 2, 350 Kent Street, Sydney, NSW, 2000  
02 9772 3600

### BCA Consultant

**STEVE WATSON & PARTNERS**  
Level 17, 456 Kent Street, Sydney, NSW, 2000  
02 9283 6555

### Contractor

**ZAUNER CONSTRUCTION**  
Suite 10, 132 Princes Highway, Ulladulla, NSW, 2539  
PO Box 271  
02 9283 6555



### Client

**SCHOOL INFRASTRUCTURE NSW**  
Level 8, 259 George Street, Sydney, NSW, 2000  
1300 482 651



Group GSA Pty Ltd ABN 76 002 113 779  
Level 7, 80 William St East Sydney NSW  
Australia 2011  
www.groupgsa.com

T +612 9361 4144 F +612 9332 3458

architecture interior design urban design landscape  
nom architect Lisa-Maree Carrigan 20773

### Project Title

**BUDAWANG SCHOOL**

### Drawing Title

**BLOCK B ROOF PLAN**

Scale 1:100

Drawing Created (date)

Drawing Created (by)

Plotted and checked by

Designer

Verified

Approved

Project No

Drawing No

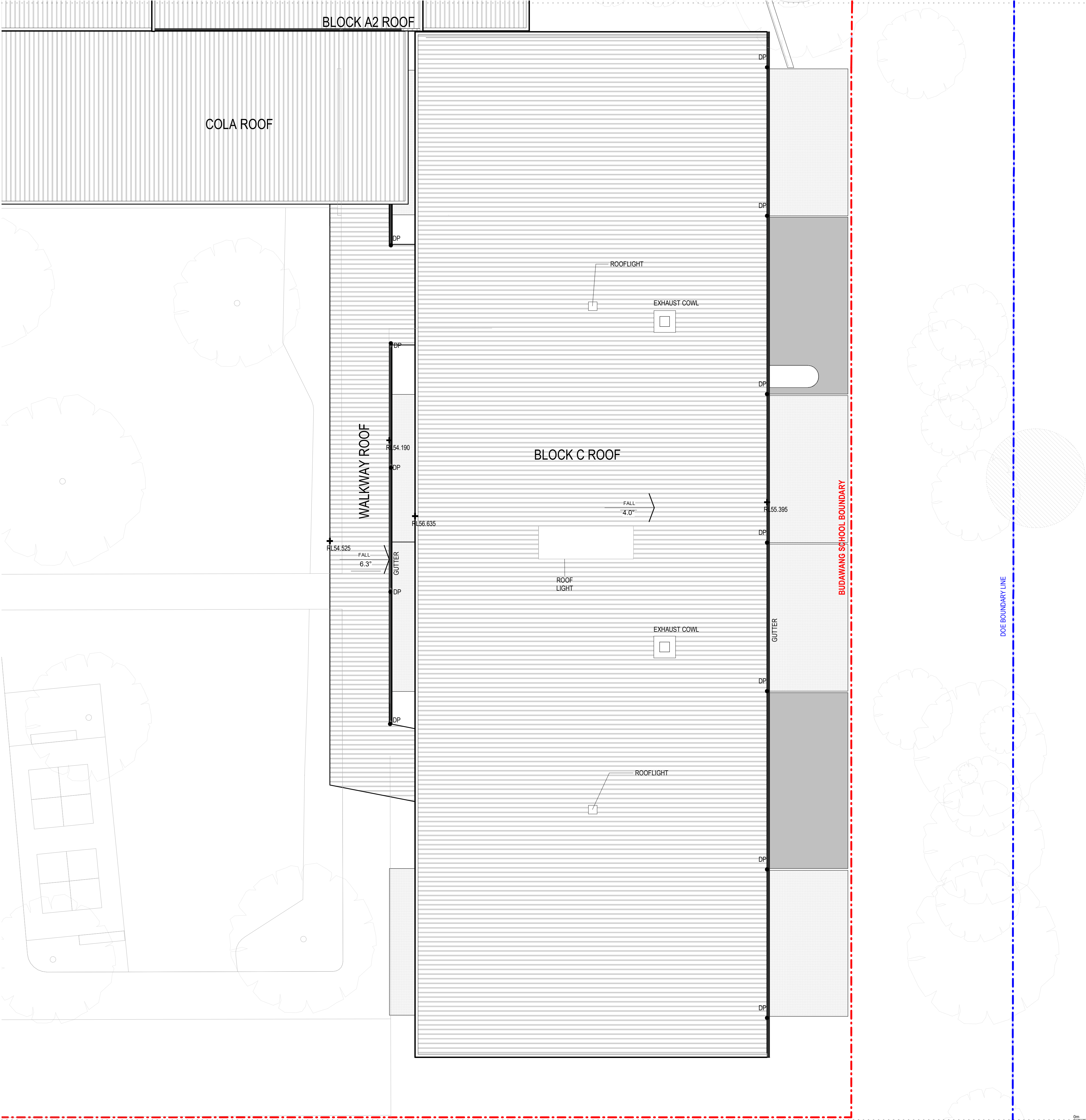
Issue

**190941 SSDA-2012 D**

This drawing is the copyright of Group GSA Pty Ltd and may not be altered, reproduced or transmitted in any form or by any means in part or in whole without the written permission of Group GSA Pty Ltd. All levels and dimensions are to be checked and verified on site prior to the commencement of any work, making of shop drawings or fabrication of components.  
Do not scale drawings. Use figured Dimensions.

8/08/2021 1:55:42 PM





Amendments		
Issue	Description	Date
A	ISSUE FOR INFORMATION	12/03/2021
B	ISSUE FOR INFORMATION	23/03/2021
C	ISSUE FOR SSDA	08/04/2021
D	ISSUE FOR SSDA	28/07/2021
E	ISSUE FOR SSDA - TREES AMENDED	08/09/2021

DA SUBMISSION

Project Management

SJA  
Level 1, 109 Pitt Street, NSW, 2000  
02 9236 5000

Structural and Civil

HENRY & HYMAS (Consulting Engineers)  
Suite 2.01, 828 Pacific Highway, Gordon, NSW, 2072  
02 9417 8400

Building Services

INTELLE BUILDING SERVICES  
Level 2, 350 Kent Street, Sydney, NSW, 2000  
02 9772 3600

BCA Consultant

STEVE WATSON & PARTNERS  
Level 17, 456 Kent Street, Sydney, NSW, 2000  
02 9283 6555

Contractor

ZAUNER CONSTRUCTION  
Suite 10, 132 Princes Highway, Ulladulla, NSW, 2539  
PO Box 271  
02 9283 6555

Client

SCHOOL INFRASTRUCTURE NSW  
Level 8, 259 George Street, Sydney, NSW, 2000  
1300 482 651

Group GSA

Group GSA Pty Ltd ABN 76 002 113 779  
Level 7, 80 William St East Sydney NSW  
Australia 2011  
www.groupgsa.com

T +612 9361 4144 F +612 9332 3458

architecture interior design urban design landscape  
nom architect Lisa-Maree Carrigan 20773

BUDAWANG SCHOOL

Drawing Title

BLOCK C ROOF PLAN

Scale

1 : 100

Drawing Created (date)

Drawing Created (by)

TKD

Plotted and checked by

RF

Verified

RF

Approved

RK

Project No

190941

Drawing No

SSDA-2013

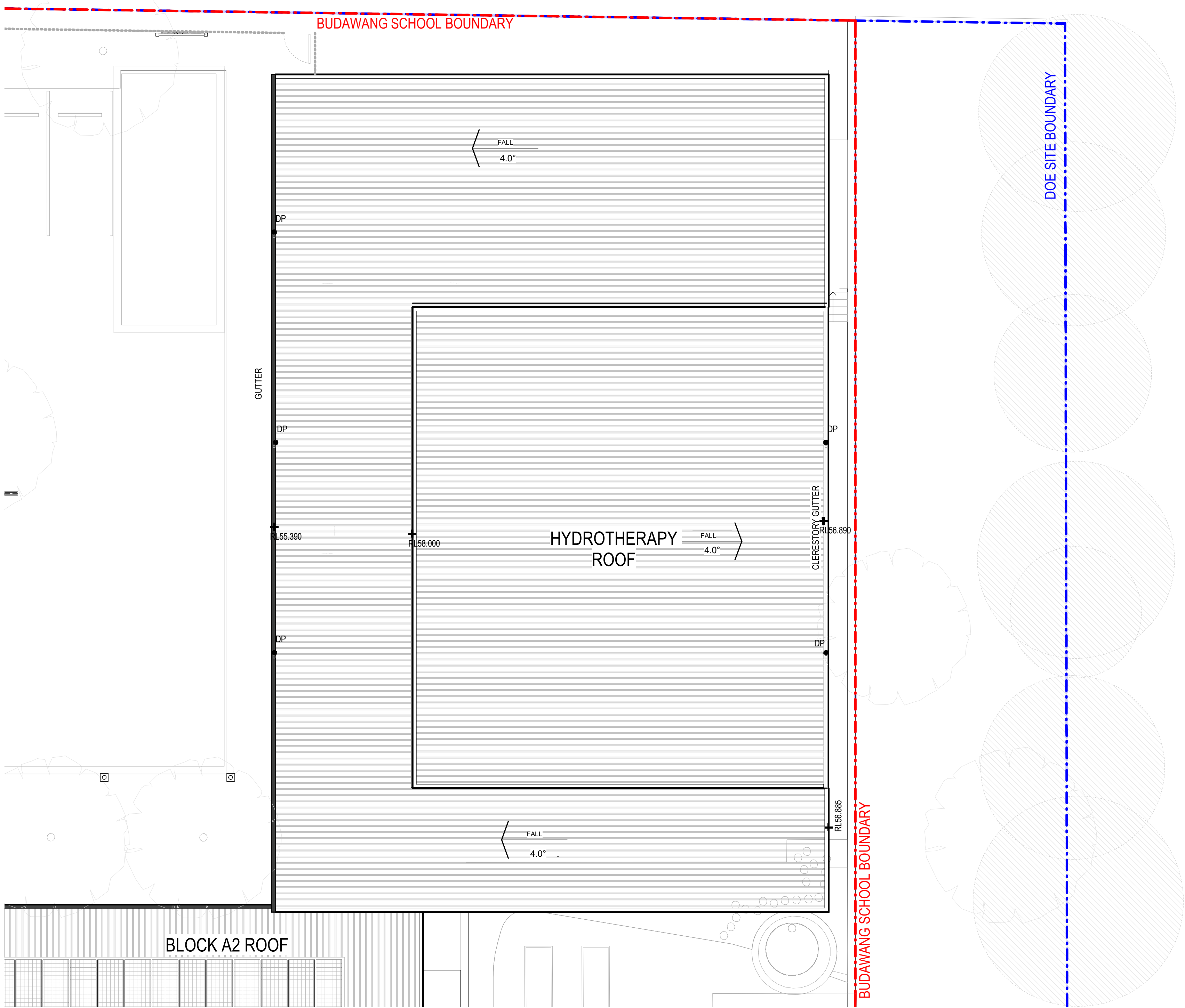
Issue

E

This drawing is the copyright of Group GSA Pty Ltd and may not be altered, reproduced or transmitted in any form or by any means in part or in whole without the written permission of Group GSA Pty Ltd. All levels and dimensions are to be checked and verified on site prior to the commencement of any work, making of shop drawings or fabrication of components.  
Do not scale drawings. Use figured Dimensions.

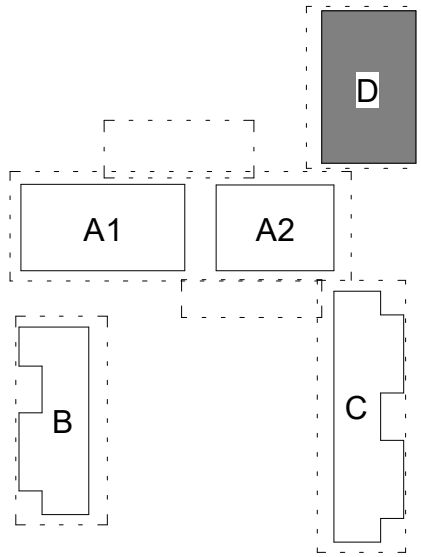
8/09/2021 1:56:01 PM





1 BLOCK D - HYDROTHERAPY ROOF PLAN  
1:100

Amendments		
Issue	Description	Date
A	ISSUE FOR INFORMATION	12/03/2021
B	ISSUE FOR INFORMATION	23/03/2021
C	ISSUE FOR SSDA	08/04/2021
D	ISSUE FOR SSDA	28/07/2021
E	ISSUE FOR SSDA - TREES AMENDED	08/09/2021



## DA SUBMISSION

### Project Management

**SJA**  
Level 1, 109 Pitt Street, NSW, 2000  
02 9336 5000

### Structural and Civil

**HENRY & HYMAS** (Consulting Engineers)  
Suite 2.01, 828 Pacific Highway, Gordon, NSW, 2072  
02 9417 8400

### Building Services

**INTELLE BUILDING SERVICES**  
Level 2, 350 Kent Street, Sydney, NSW, 2000  
02 9772 3600

### BCA Consultant

**STEVE WATSON & PARTNERS**  
Level 17, 456 Kent Street, Sydney, NSW, 2000  
02 9283 6555

### Contractor

**ZAUNER CONSTRUCTION**  
Suite 10, 132 Princes Highway, Ulladulla, NSW, 2539  
PO Box 271  
02 9283 6555



### Client

**SCHOOL INFRASTRUCTURE NSW**  
Level 8, 259 George Street, Sydney, NSW, 2000  
1300 482 651



Group GSA Pty Ltd ABN 76 002 113 779  
Level 7, 80 William St East Sydney NSW  
Australia 2011  
www.groupgsa.com

T +612 9361 4144 F +612 9332 3458

architecture interior design urban design landscape  
nom architect Lisa-Maree Carrigan 20773

### Project Title

**BUDAWANG SCHOOL**

### Drawing Title

**HYDROTHERAPY  
ROOF PLAN**

Scale 1:100

### Drawing Created (date)

Drawing Created (by) CH

Plotted and checked by RF

Verified RF

Approved RK

Project No Drawing No Issue

**190941 SSDA-2014 E**

This drawing is the copyright of Group GSA Pty Ltd and may not be altered, reproduced or transmitted in any form or by any means in part or in whole without the written permission of Group GSA Pty Ltd. All levels and dimensions are to be checked and verified on site prior to the commencement of any work, making of shop drawings or fabrication of components.  
Do not scale drawings. Use figured Dimensions.

