

EVACUATION SIGN

45 TATTERSALL ROAD, KINGS PARK, NSW, 2148
ZONE No. 1

IN CASE OF FIRE
FIRE / EVACUATION PROCEDURES

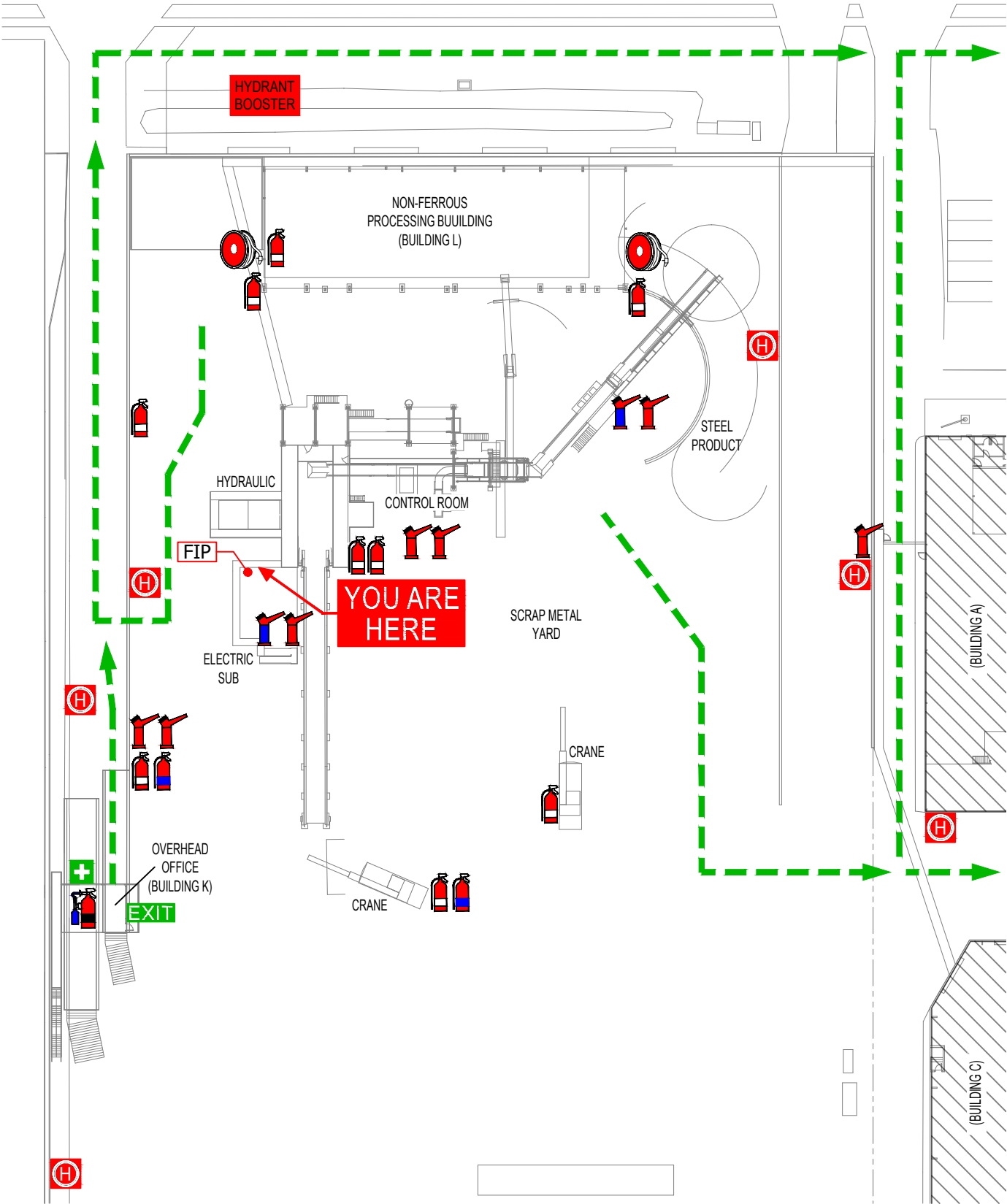
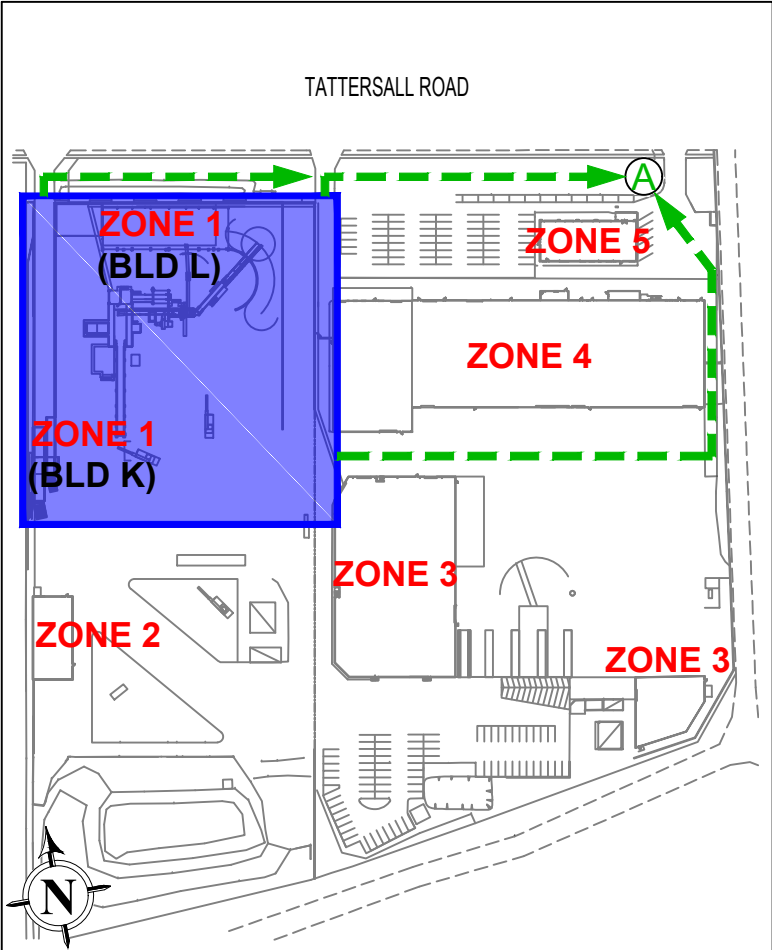
- REMOVE PEOPLE**
IF IN DANGER TO THE EMERGENCY ASSEMBLY AREA
- ALERT THE FIRE SERVICE**
NEARBY RESIDENCE AND MEMBERS OF THE PUBLIC
- CONFINE FIRE & SMOKE**
CLOSE ALL WINDOWS & DOORS (IF SAFE TO DO SO)
- EXTINGUISH**
AND CONTROL THE FIRE (IF SAFE TO DO SO)



LEGEND

- ABE FIRE EXTINGUISHER
- CO2 FIRE EXTINGUISHER
- FOAM EXTINGUISHER
- WATER EXTINGUISHER
- WATER FIRE FIGHTING CANNON
- FOAM FIRE FIGHTING CANNON
- FIRE HOSE REEL
- FIRE HYDRANT
- FIRE BLANKET
- FIRE INDICATOR PANEL
- ELECTRICAL SWITCHBOARD
- FIRST AID
- DESIGNATED EXIT
- EXIT PATH
- PRIMARY ASSEMBLY AREA

SITE PLAN



EVACUATION SIGN

IN CASE OF FIRE

FIRE / EVACUATION PROCEDURES

REMOVE PEOPLE

IF IN DANGER TO THE EMERGENCY ASSEMBLY AREA

ALERT THE FIRE SERVICE

NEARBY RESIDENCE AND MEMBERS OF THE PUBLIC

CONFINE FIRE & SMOKE

CLOSE ALL WINDOWS & DOORS (IF SAFE TO DO SO)

EXTINGUISH

AND CONTROL THE FIRE (IF SAFE TO DO SO)



POLICE



FIRE



AMBULANCE

LEGEND



ABE FIRE EXTINGUISHER



CO2 FIRE EXTINGUISHER



FOAM EXTINGUISHER



WATER EXTINGUISHER



WATER FIRE FIGHTING CANNON



FOAM FIRE FIGHTING CANNON



FIRE HOSE REEL



FIRE HYDRANT



FIRE BLANKET



FIRE INDICATOR PANEL



ELECTRICAL SWITCHBOARD



FIRST AID



DESIGNATED EXIT

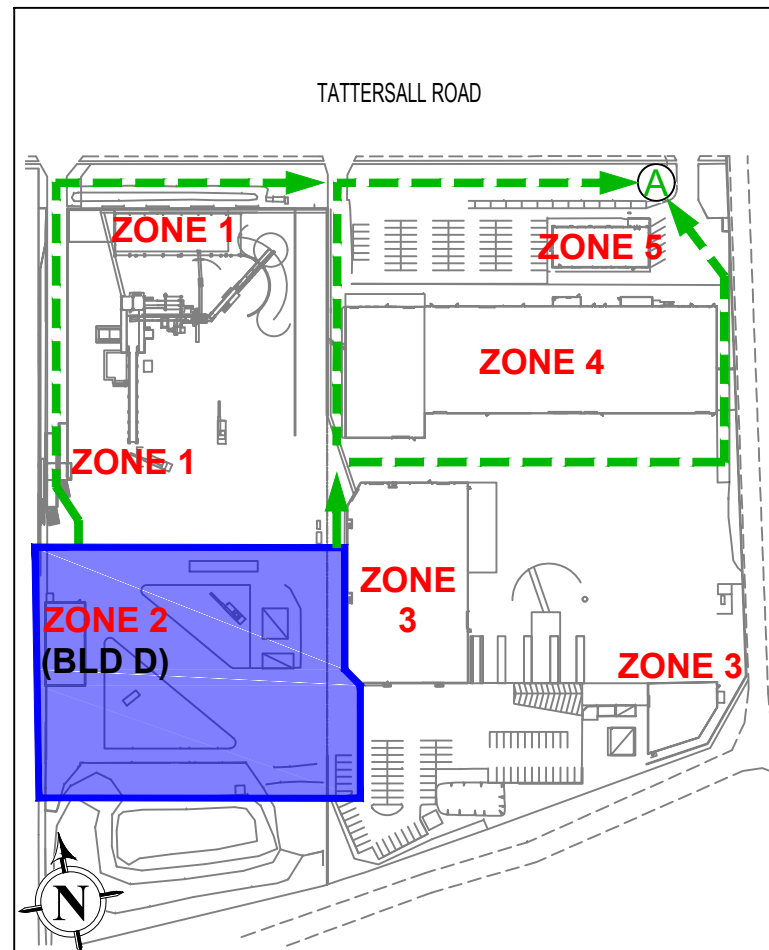


EXIT PATH

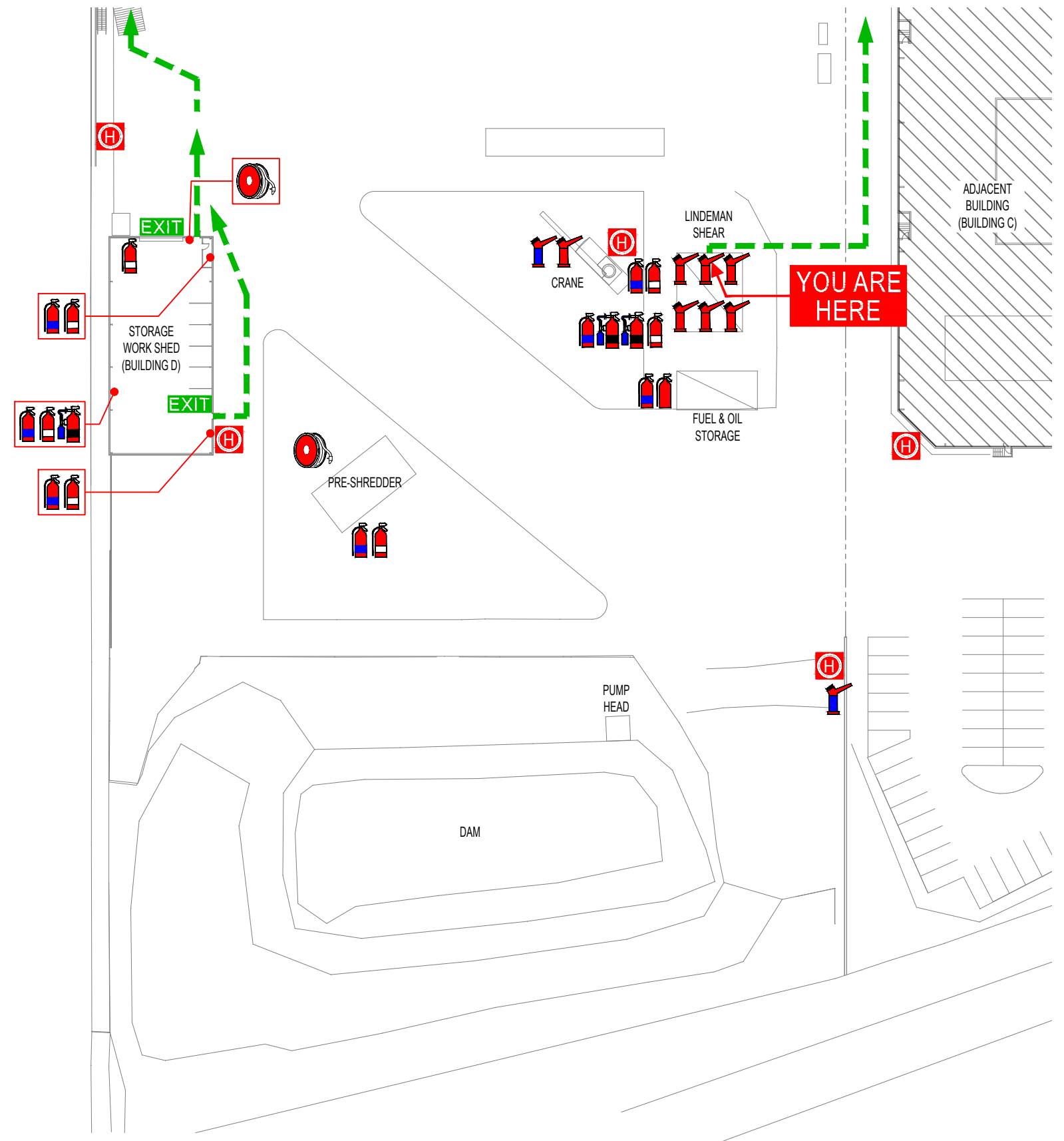


PRIMARY ASSEMBLY AREA

SITE PLAN



45 TATTERSALL ROAD, KINGS PARK, NSW, 2148
ZONE No. 2



EVACUATION SIGN

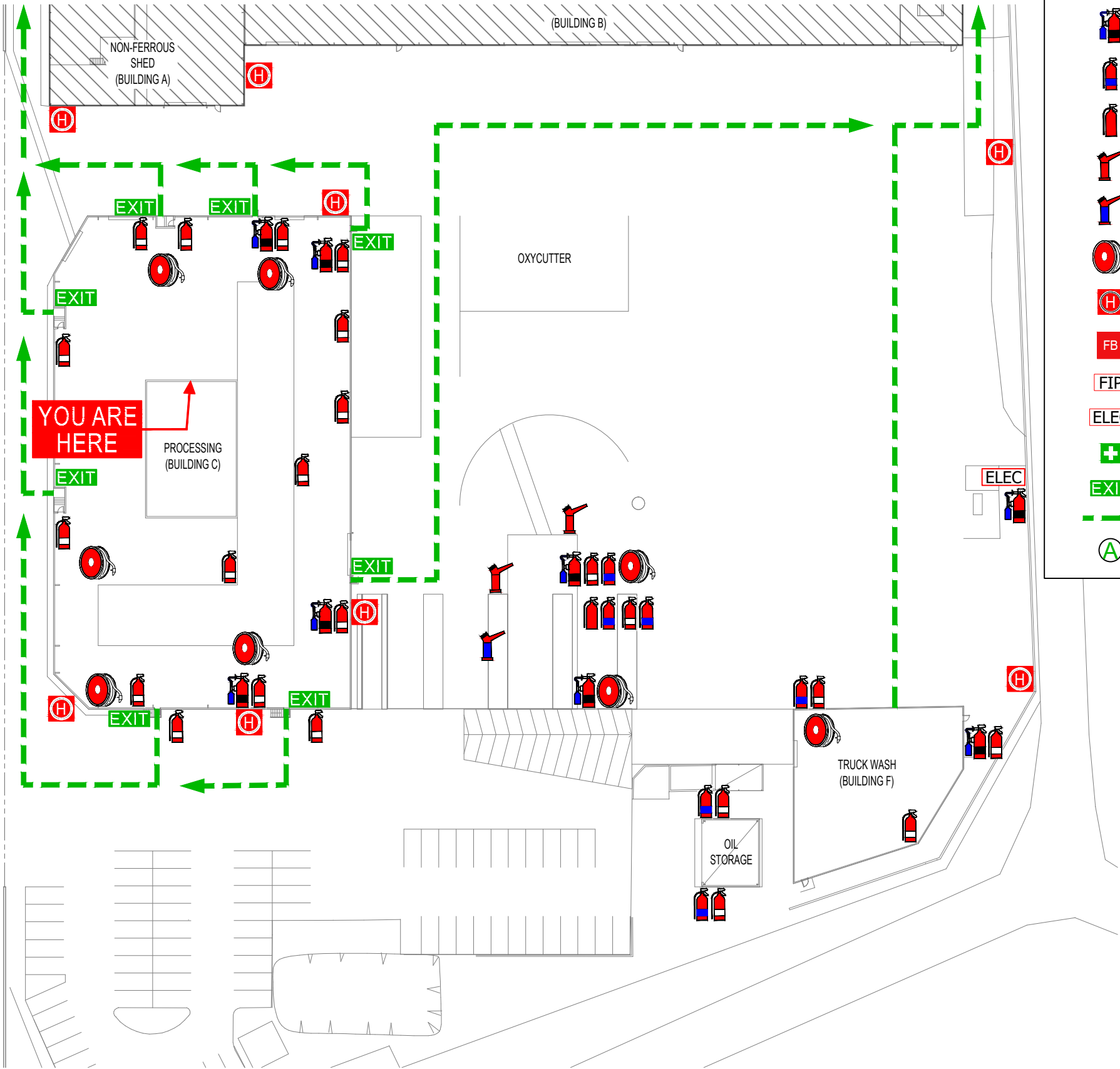
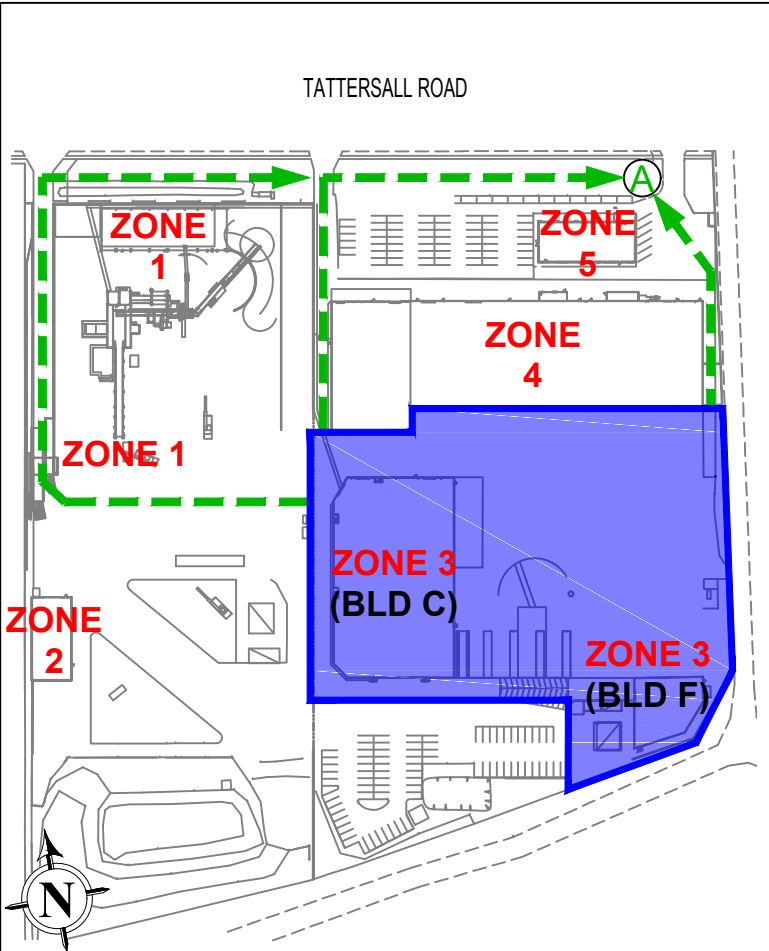
23-43 TATTERSALL ROAD, KINGS PARK, NSW, 2148
ZONE No. 3

IN CASE OF FIRE
FIRE / EVACUATION PROCEDURES

- REMOVE PEOPLE**
IF IN DANGER TO THE EMERGENCY ASSEMBLY AREA
- ALERT THE FIRE SERVICE**
NEARBY RESIDENCE AND MEMBERS OF THE PUBLIC
- CONFINE FIRE & SMOKE**
CLOSE ALL WINDOWS & DOORS (IF SAFE TO DO SO)
- EXTINGUISH**
AND CONTROL THE FIRE (IF SAFE TO DO SO)



SITE PLAN



LEGEND	
	ABE FIRE EXTINGUISHER
	CO2 FIRE EXTINGUISHER
	FOAM EXTINGUISHER
	WATER EXTINGUISHER
	WATER FIRE FIGHTING CANNON
	FOAM FIRE FIGHTING CANNON
	FIRE HOSE REEL
	FIRE HYDRANT
	FIRE BLANKET
	FIRE INDICATOR PANEL
	ELECTRICAL SWITCHBOARD
	FIRST AID
	DESIGNATED EXIT
	EXIT PATH
	PRIMARY ASSEMBLY AREA

EVACUATION SIGN

23-43 TATTERSALL ROAD, KINGS PARK, NSW, 2148
ZONE No. 4

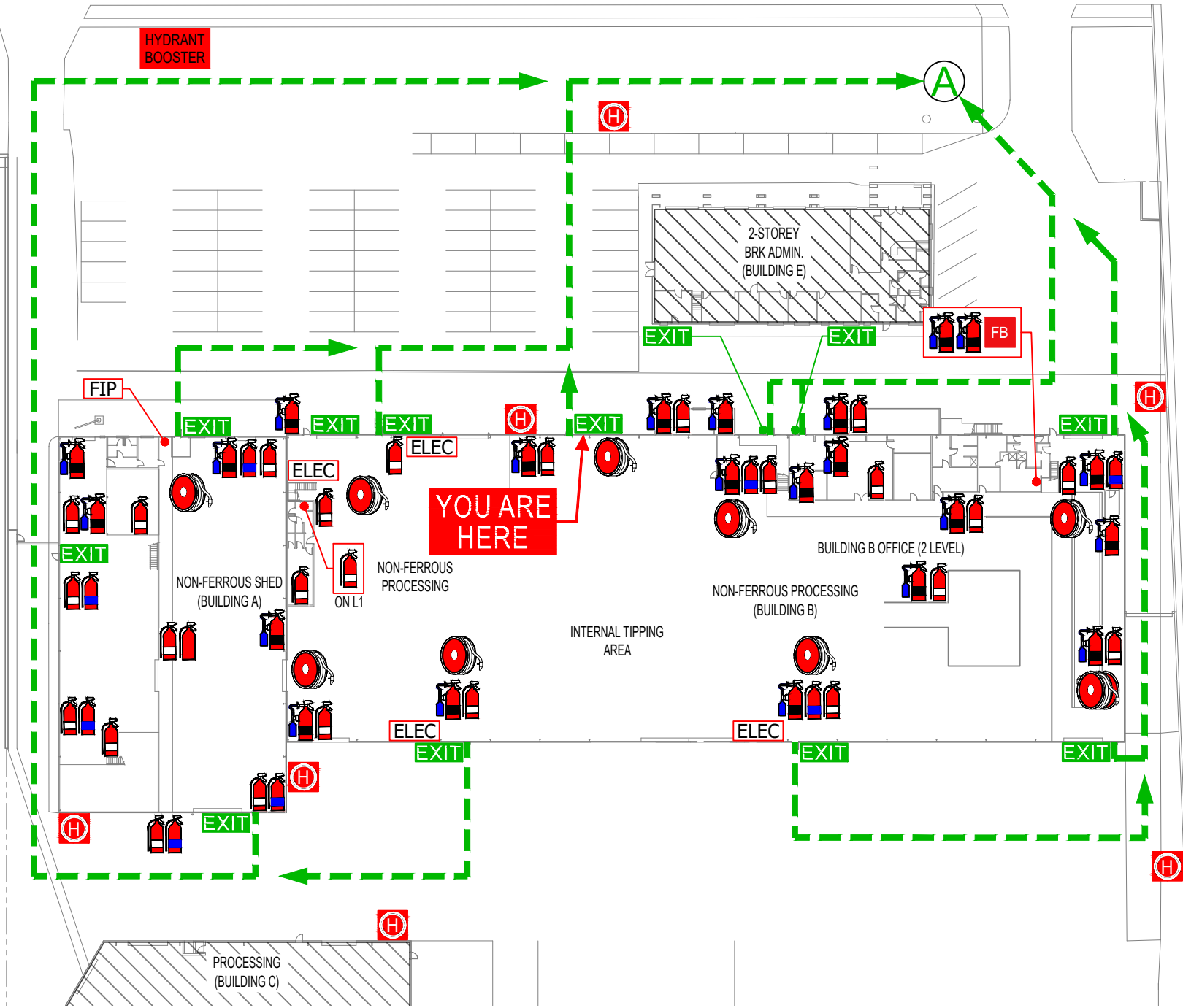
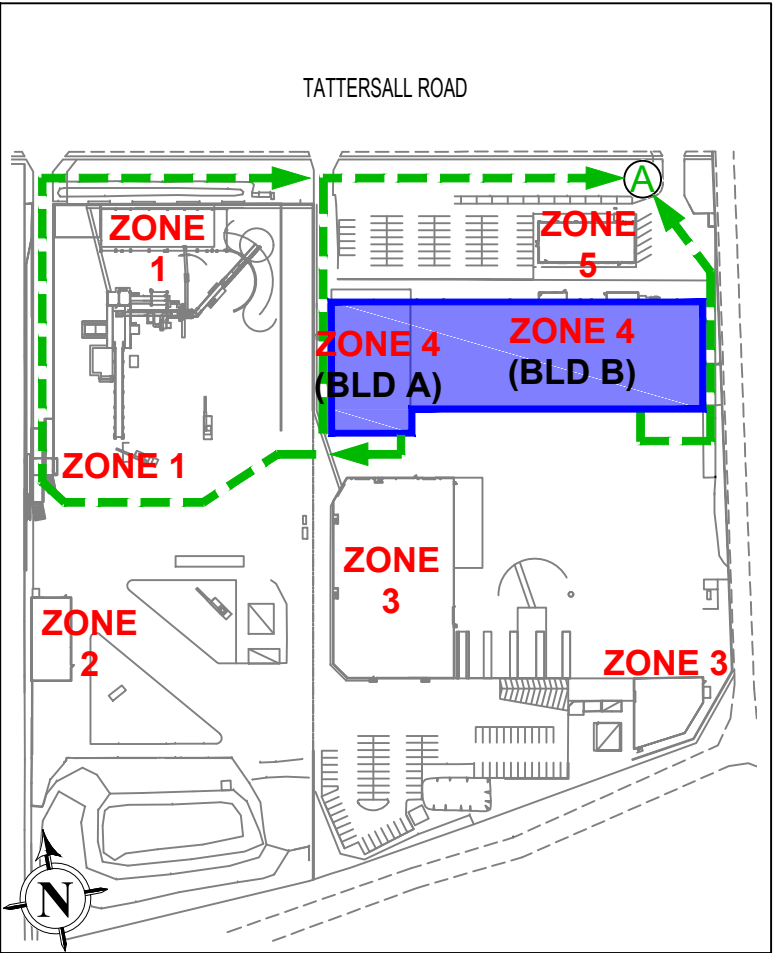
IN CASE OF FIRE
FIRE / EVACUATION PROCEDURES

- REMOVE PEOPLE**
IF IN DANGER TO THE EMERGENCY ASSEMBLY AREA
- ALERT THE FIRE SERVICE**
NEARBY RESIDENCE AND MEMBERS OF THE PUBLIC
- CONFINE FIRE & SMOKE**
CLOSE ALL WINDOWS & DOORS (IF SAFE TO DO SO)
- EXTINGUISH**
AND CONTROL THE FIRE (IF SAFE TO DO SO)



LEGEND	
	ABE FIRE EXTINGUISHER
	CO2 FIRE EXTINGUISHER
	FOAM EXTINGUISHER
	WATER EXTINGUISHER
	WATER FIRE FIGHTING CANNON
	FOAM FIRE FIGHTING CANNON
	FIRE HOSE REEL
	FIRE HYDRANT
	FIRE BLANKET
	FIRE INDICATOR PANEL
	ELECTRICAL SWITCHBOARD
	FIRST AID
	DESIGNATED EXIT
	EXIT PATH
	PRIMARY ASSEMBLY AREA

SITE PLAN



EVACUATION SIGN

IN CASE OF FIRE
FIRE / EVACUATION PROCEDURES

- REMOVE PEOPLE**
IF IN DANGER TO THE EMERGENCY ASSEMBLY AREA
- ALERT THE FIRE SERVICE**
NEARBY RESIDENCE AND MEMBERS OF THE PUBLIC
- CONFINE FIRE & SMOKE**
CLOSE ALL WINDOWS & DOORS (IF SAFE TO DO SO)
- EXTINGUISH**
AND CONTROL THE FIRE (IF SAFE TO DO SO)



LEGEND

- ABE FIRE EXTINGUISHER
- CO2 FIRE EXTINGUISHER
- FOAM EXTINGUISHER
- WATER EXTINGUISHER
- WATER FIRE FIGHTING CANNON
- FOAM FIRE FIGHTING CANNON
- FIRE HOSE REEL
- FIRE HYDRANT
- FIRE BLANKET
- FIRE INDICATOR PANEL
- ELECTRICAL SWITCHBOARD
- FIRST AID
- DESIGNATED EXIT
- EXIT PATH
- PRIMARY ASSEMBLY AREA

23-43 TATTERSALL ROAD, KINGS PARK, NSW, 2148
ZONE No. 5 (BUILDING E - GROUND FLOOR)

SITE PLAN

