

# LOT 2A, KEMPS CREEK, OAKDALE WEST ESTATE

DRAWING LIST DA		
DWG NO.	NAME	Current Revision
DA000	Cover Page	H
DA001	Perspectives - Office 2A	H
DA010	Site Plan	M
DA200	Roof Plan	I
DA201	Floor Plans - Office	I
DA203	Floor Plans - Dock Offices	G
DA210	Warehouse Elevations & Section	M
DA211	Elevations - Office	I
DA300	Signage Plan	I



1 Perspective 01- Warehouse



2 Perspective 02- Warehouse



1

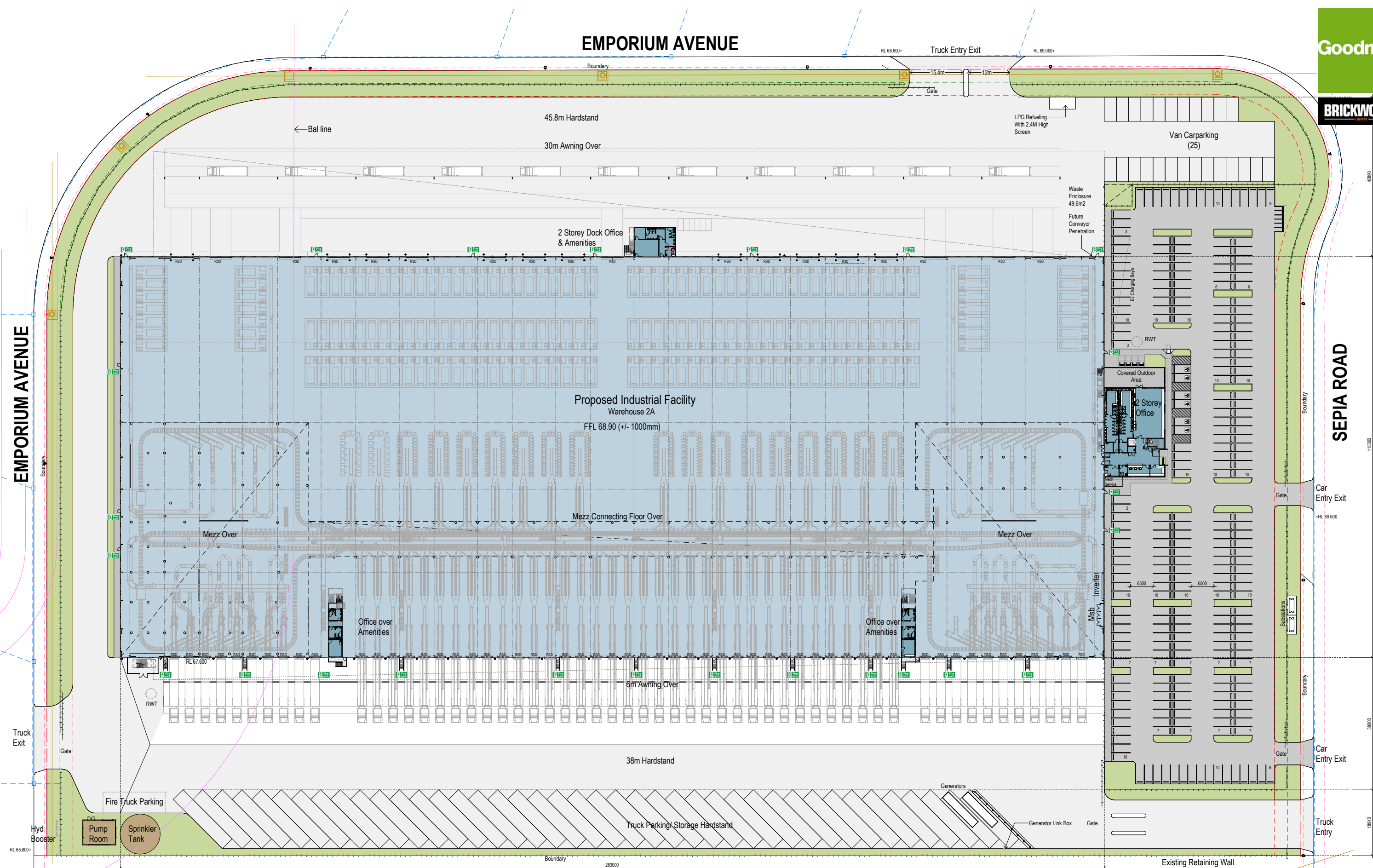
Perspective 01- Office









2

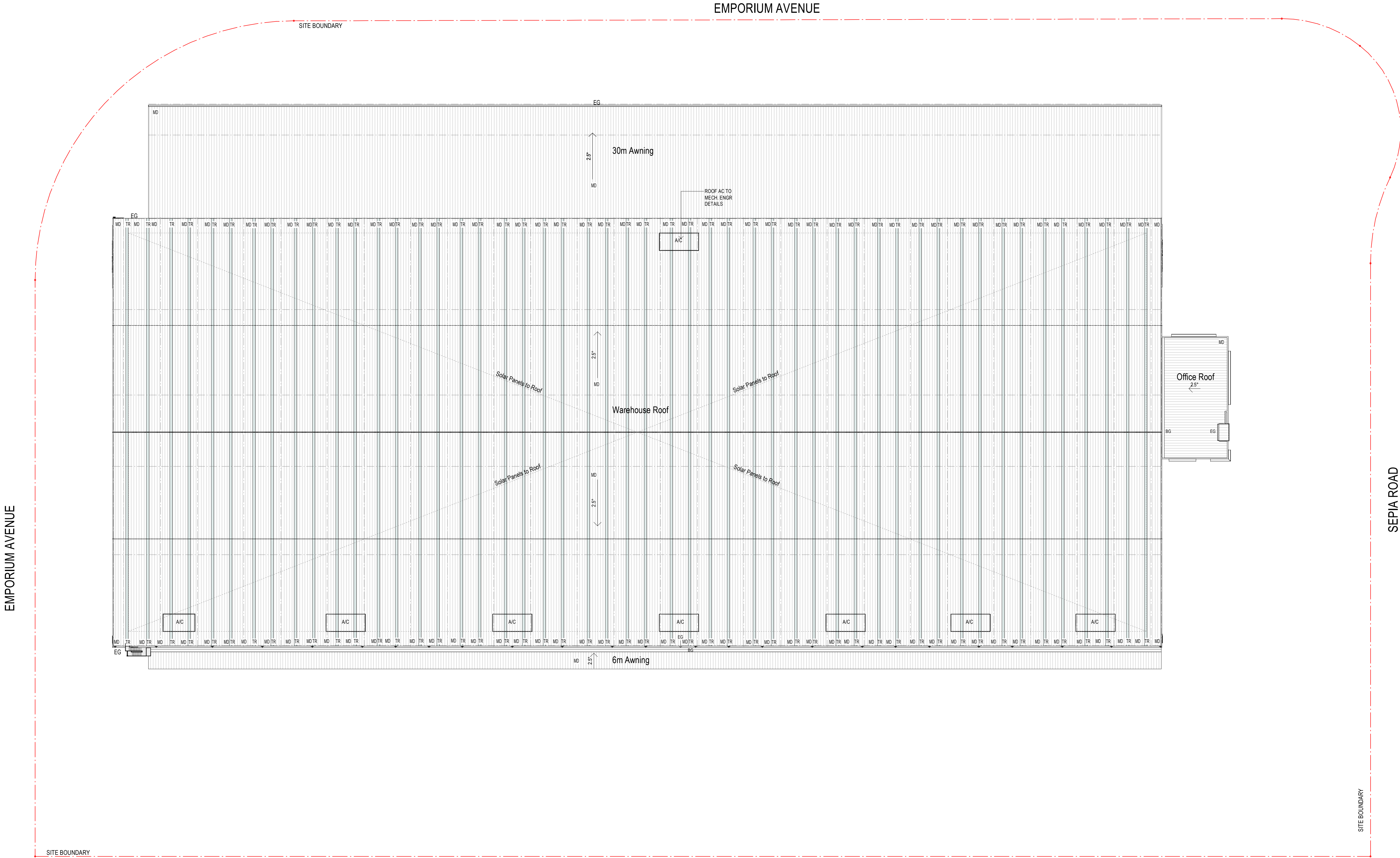
Perspective 02 - Office





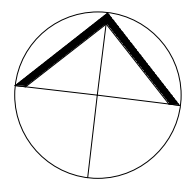
LEGEND	SERVICES LEGEND
SITE BOUNDARY	SEWER
 LOT BOUNDARY	 STORMWATER
 BUILDING 7.5M SETBACK	 ELECTRICAL
 LANDSCAPE 3.75M SETBACK	
2.1m PALISADE FENCING	
 RETAINING WALL	

DEVELOPMENT AREA SCHEDULE							
SITE AREA		80,582 sqm		HARDSTAND AREA		32,115 sqm	
WAREHOUSE (excl. mezz )		34,262 sqm	MEZZANINES ( Inside warehouse)		8,403 sqm	LIGHT DUTY AREA	6,950 sqm
OFFICE ( 2 Levels)		1,050 sqm	TOTAL GFA		44,015 sqm		
DOCK OFFICE (North - 2 Levels)		195 sqm	TOTAL GLA		35,612 sqm	CARPARKING (inclusive of 6 disabled spaces and 13 EV charging spaces)	255
AMENITIES SOUTH 1st floor only.		105 sqm	SITE COVER ( exc. awning )		44 %		
Ground Floor excluded as it is already part of the warehouse area)			FLOOR SPACE RATIO		0.54 : 1	MOTORCYCLES	6

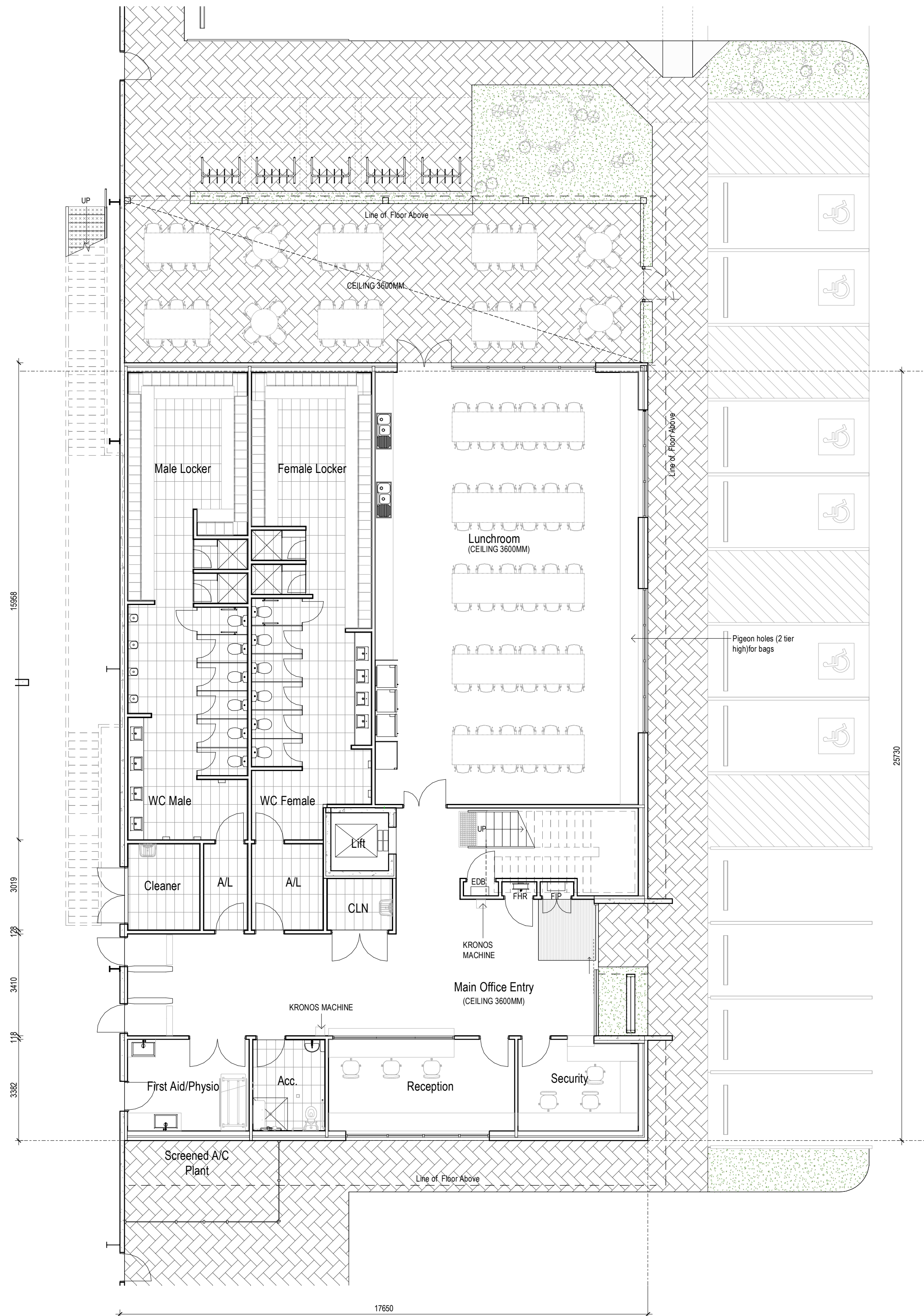


1 ROOF PLAN - WAREHOUSE 1 : 500

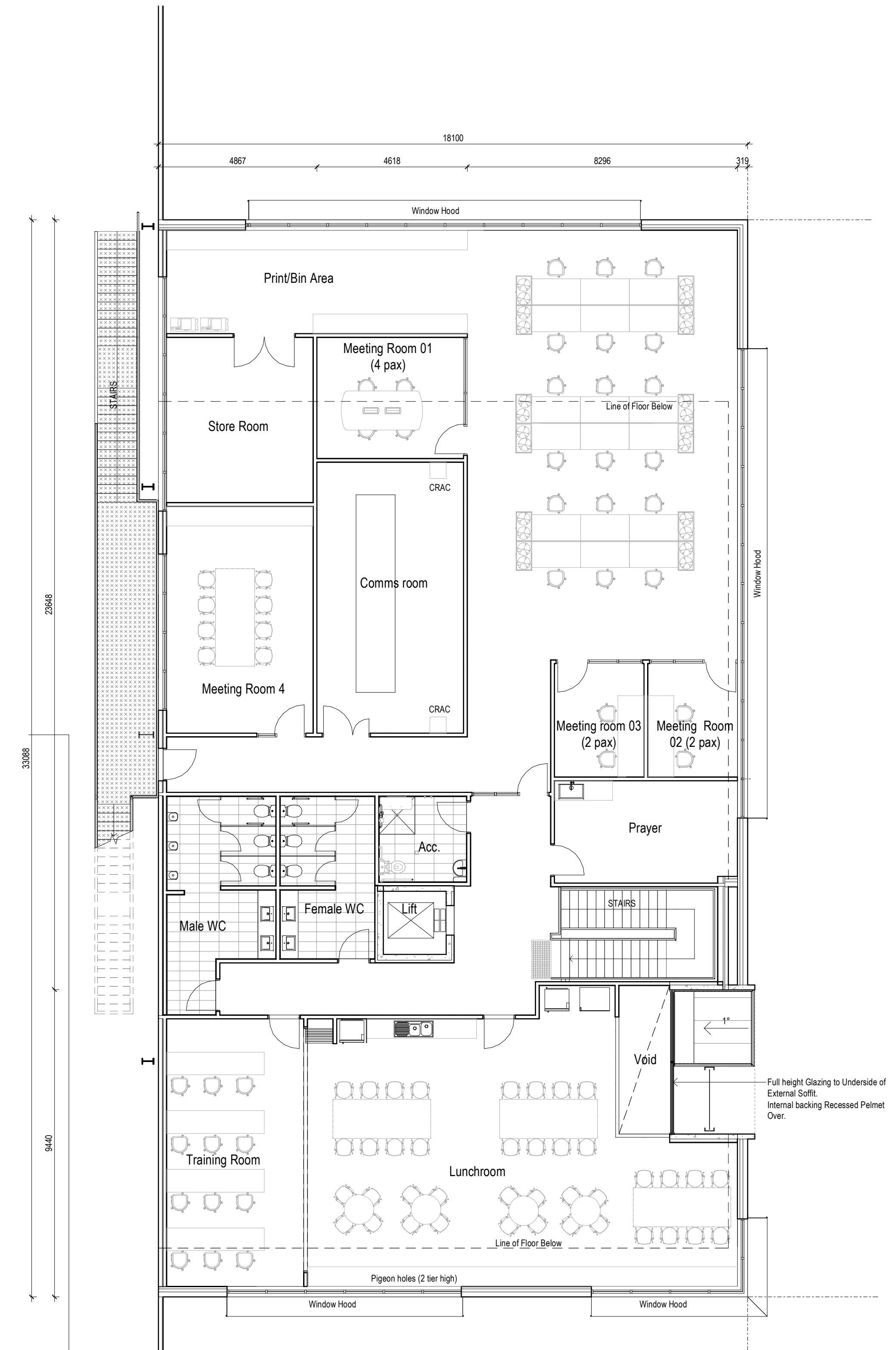
LEGEND	
BG	BOX GUTTER
EG	EAVES GUTTER
MD	METAL ROOF SHEETING
TR	TRANSLUCENT SHEETING
SP	SOLAR PANELS



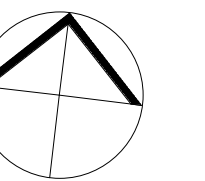


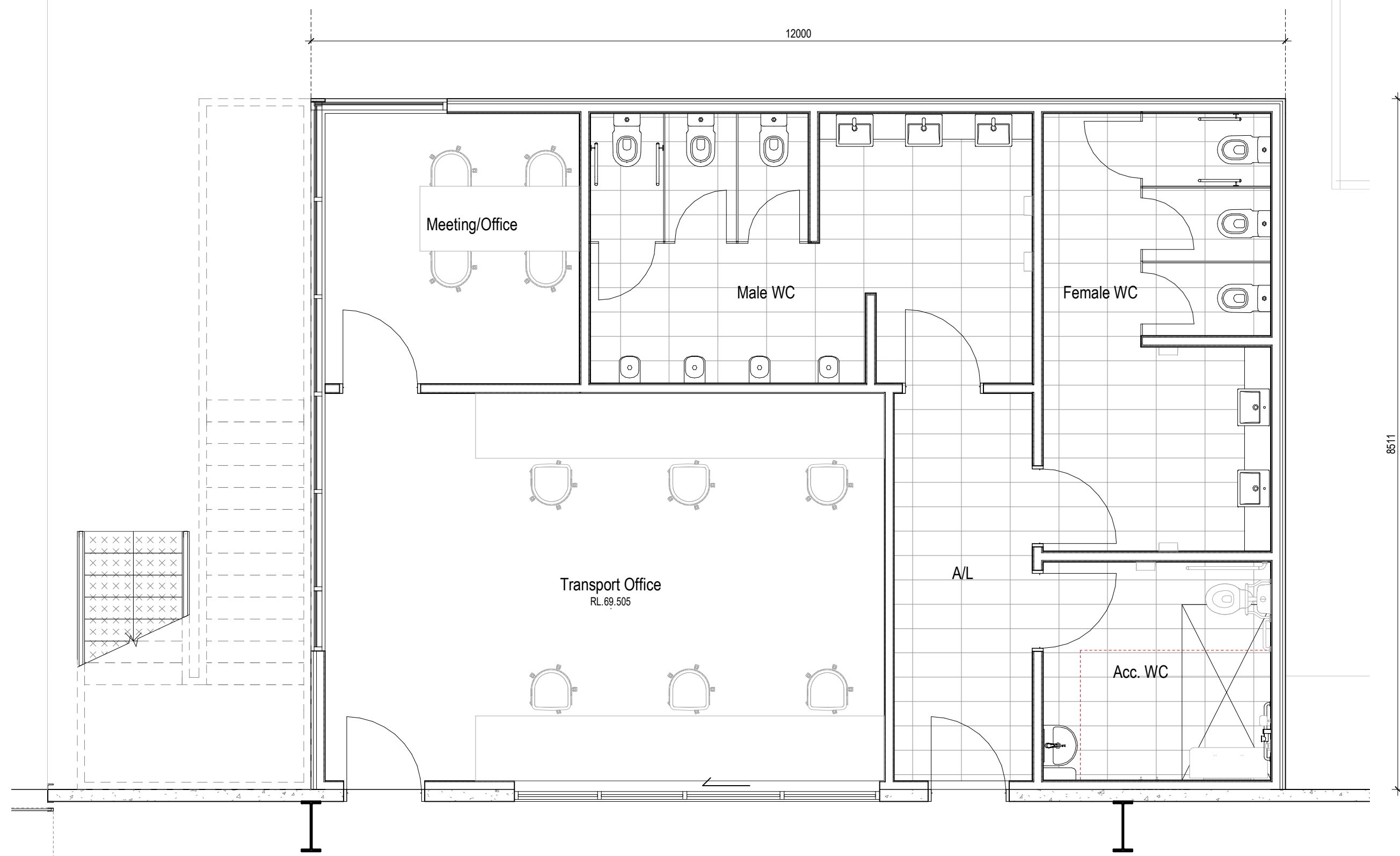


1 OFFICE - GROUND FLOOR PLAN 1 : 100

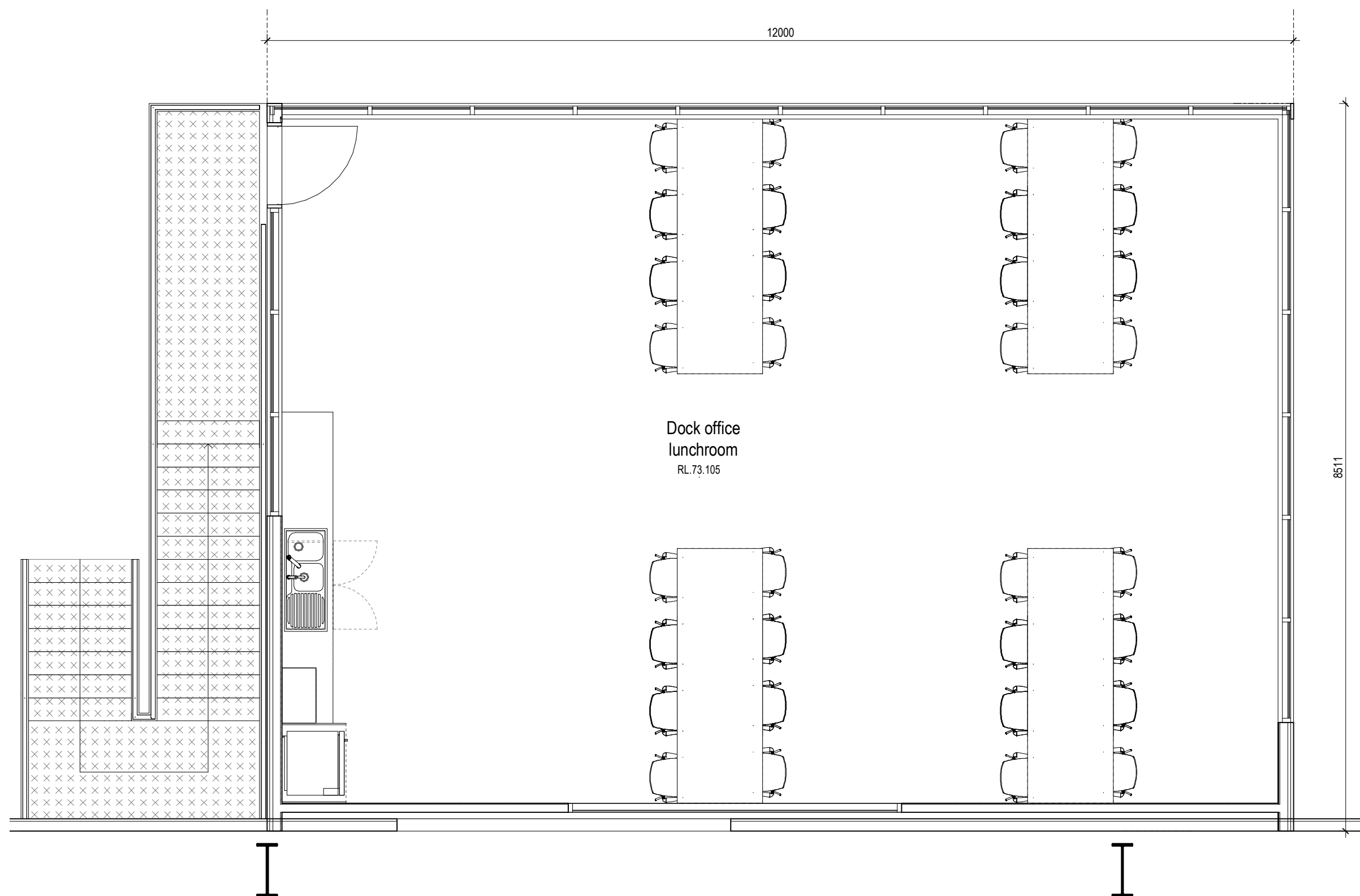


2 OFFICE - LEVEL 1 FLOOR PLAN 1 : 100

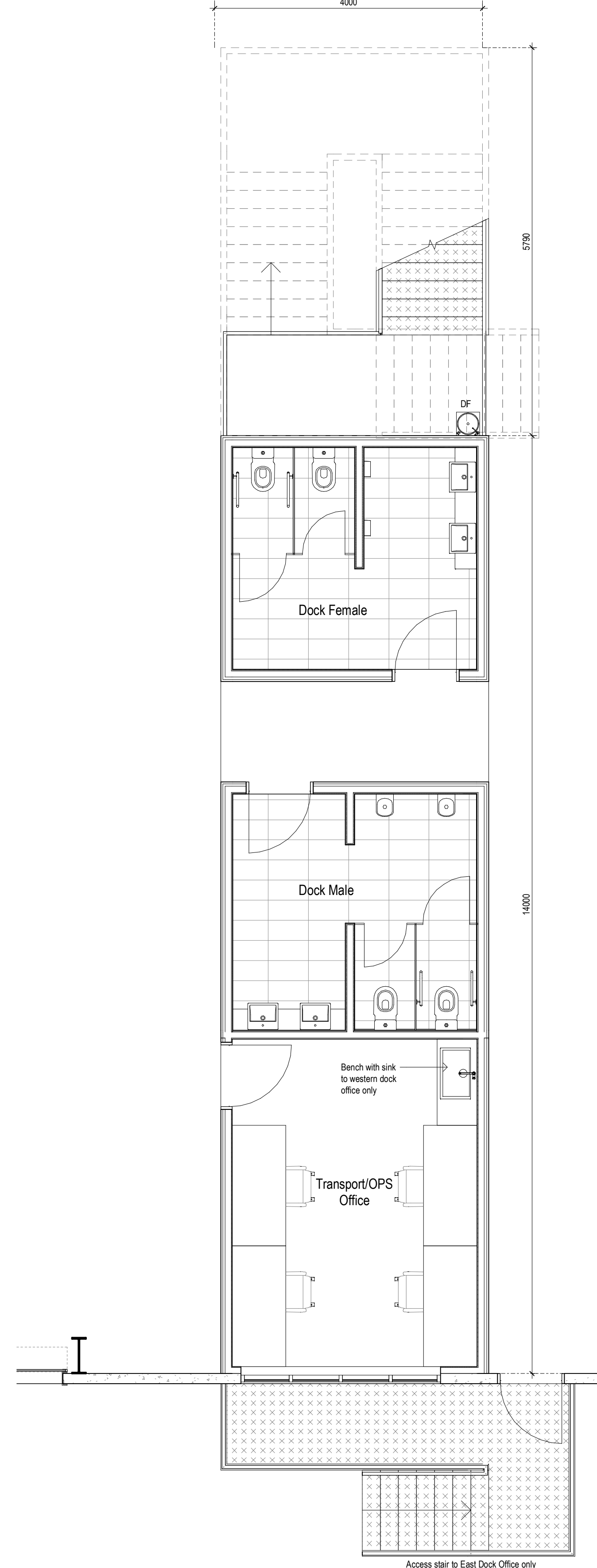




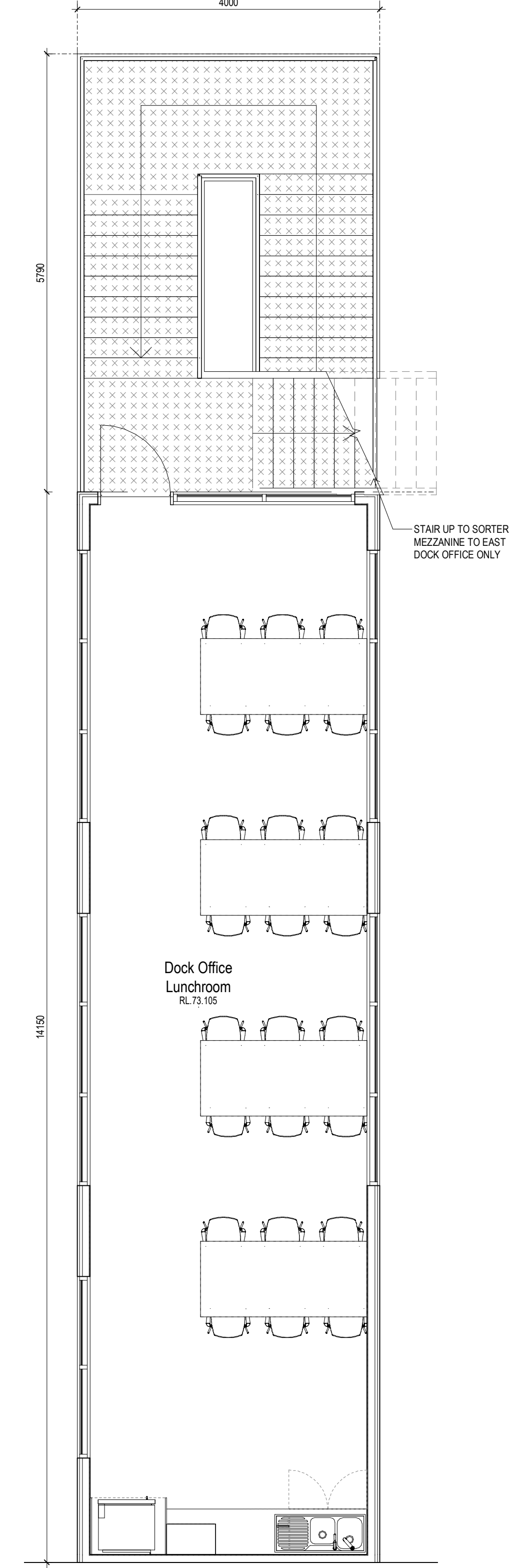
1 GROUND DOCK OFFICE NORTH 1 : 50



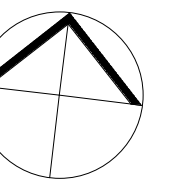
2 L1 DOCK OFFICE Copy 1 1 : 50



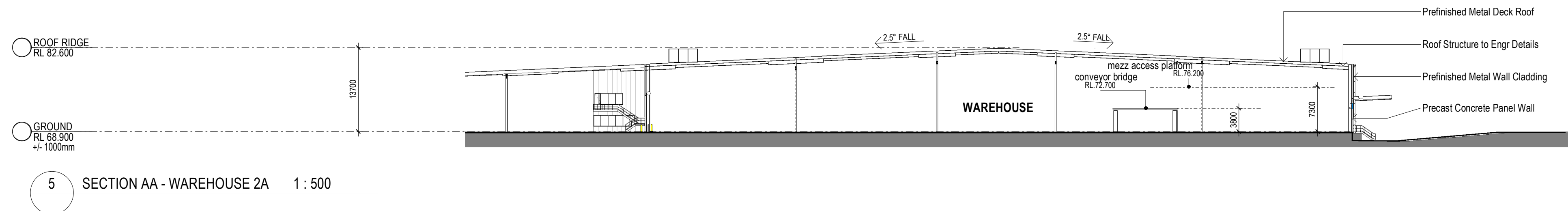
3 GROUND DOCK OFFICE SOUTH 1 : 50














4 L1 DOCK OFFICE SOUTH 1 : 50







### INDICATIVE EXTERNAL FINISHES LEGEND

- |  |   |   |   |   |   |   |   |   |  |  |  |   |
|--|---|---|---|---|---|---|---|---|--|--|--|---|
|   |  |  |  |  |  |  |  |                        |             |   |   |  |
| <b>BLK-1</b><br>BRICKWORK TO EQUAL<br>BOWRAL 300 GERTRUDIS<br>BROWN 300 X 110 X 50mm.<br>STACKED BOND WITH GREY<br>MORTAR JOINTS | <b>AWN-1</b><br>METAL AWNING. PAINT<br>FINISH TO MATCH<br>COLOURBOND MONUMENT       | <b>GL-1</b><br>CLEAR GLAZING - LIGHT<br>GREY TINT OR SIMILAR                        | <b>MD</b><br>METAL DECK ROOFING<br>COLOURBOND - SURFIST                               | <b>MRS</b><br>METAL ROLLER<br>SHUTTER PREFINISHED<br>IN SHALE GREY                    | <b>MESH-1</b><br>STAINLESS STEEL<br>MESH IN METAL FRAME                               | <b>PCP-1</b><br>PRECAST CONCRETE<br>PANEL WITH "NAKWA<br>PERMATINT PAINT FINISH"      | <b>PCP-2</b><br>PRECAST CONCRETE<br>DADO PANEL PAINT<br>FINISH                        | <b>PMW-1</b><br>PREFINISHED METAL<br>WALL SHEET CLADDING<br>COLOURBOND -<br>MONUMENT FINISH (OR<br>SIMILAR) | <b>PMW-2</b><br>PREFINISHED METAL<br>WALL SHEET CLADDING<br>COLOURBOND -<br>GOODMAN GREEN FINISH | <b>PMW-3</b><br>PREFINISHED STANDING<br>SEAM PROFILE<br>METAL CLADDING EQUAL<br>TO FILDBERG PROMINENCE<br>FINESSE IN COLOURBOND<br>MONUMENT FINISH | <b>PMW-4</b><br>PREFINISHED METAL<br>WALL SHEET CLADDING<br>COLOURBOND -<br>SHALE GREY | <b>TR</b><br>TRANSLUCENT ROOF<br>SHEET. OPAL COLOUR                                   |



#### INDICATIVE EXTERNAL FINISHES LEGEND

<b>BLK-1</b> BRICKWORK TO EQUAL BOWRAL 300 GERTRUDIS BROWN 300 X 110 X 50mm. STACKED BOND WITH GREY MORTAR JOINTS	<b>AWN-1</b> STEEL AWNING. PAINT FINISH TO MATCH COLOURBOND MONUMENT	<b>GL-1</b> CLEAR GLAZING - LIGHT GREY TINT OR SIMILAR	<b>MDR-1</b> METAL DECK ROOFING COLOURBOND - SURFMIST	<b>MRS</b> METAL ROLLER SHUTTER PREFINISHED IN SHALE GREY	<b>MESH-1</b> STAINLESS STEEL MESH IN METAL FRAME	<b>PCP-1</b> PRECAST CONCRETE PANEL WITH "NAWKAW" PERMATINT PAINT FINISH	<b>PCP-2</b> PRECAST CONCRETE DADO PANEL PAINT FINISH	<b>PMW-1</b> REFINISHED METAL WALL SHEET CLADDING COLOURBOND - MONUMENT FINISH (OR SIMILAR)	<b>PMW-2</b> REFINISHED METAL WALL SHEET CLADDING COLOURBOND - GOODMAN GREEN FINISH	<b>PMW-3</b> REFINISHED STANDING SEAM PROFILE METAL CLADDING EQUAL TO FOLDERS PROMINENCE FINISHES IN COLOURBOND MONUMENT FINISH	<b>PMW-4</b> REFINISHED METAL WALL SHEET CLADDING COLOURBOND - SHALE GREY	<b>TRS-1</b> TRANSLUCENT ROOF SHEET OPAL COLOUR
<b>WH-1</b> STEEL WINDOW HOOD. COLOURBOND MONUMENT FINISH (OR SIMILAR)	<b>FRM</b> REFINISHED ALUMINIUM WINDOW FRAME POWDER COATING IN BLACK	<b>DP-1</b> DOWNPIPE COLOUR TO MATCH BACKGROUND CLADDING COLOUR	<b>PAV-1</b> PAVER, GREY BRICK HERRINGBONE PATTERN	<b>TMB</b> TIMBER LOOK PANELS. ALUMINIUM CLIP ON PANELS, SCULPTIFORM	<b>SC</b> STAINLESS STEEL CABLE WITH CLIMBING PLANTS	<b>SP</b> SOLAR PANELS	<b>MB</b> WELDED SOLID METAL BAR BALUSTRADE PAINT FINISH	<b>PL</b> 1m x 1m ABOVE GROUND PLANTER WITH TIMBER TABLE				



Proposed Industrial Facility  
Warehouse 2A

