

Cut/Fill Table				
Lower_value		Upper_value		Colour
-18	to	-16.5	1.5	
-16.5	to	-15	1.5	
-15	to	-13.5	1.5	
-13.5	to	-12	1.5	
-12	to	-10.5	1.5	
-10.5	to	-9	1.5	
-9	to	-7.5	1.5	
-7.5	to	-6	1.5	
-6	to	-4.5	1.5	
-4.5	to	-3	1.5	
-3	to	-1.5	1.5	
-1.5	to	0	1.5	
0	to	1.5	1.5	
1.5	to	3	1.5	
3	to	4.5	1.5	
4.5	to	6	1.5	
6	to	7.5	1.5	
7.5	to	9	1.5	
9	to	10.5	1.5	
10.5	to	12	1.5	

Total Excavation  
Cut - 81,493m<sup>3</sup>  
Fill - 3,028m<sup>3</sup>  
*[If additional North Headland excavated  
Total Cut - 84,783m<sup>3</sup>]*

Staged Excavation  
*Stage A*  
Cut - 33,860m<sup>3</sup> / Fill - 3,001m<sup>3</sup>  
*stage B*  
Cut - 47,628m<sup>3</sup> / Fill - 27m<sup>3</sup>

ISSUES / AMENDMENTS		
REV.	DESCRIPTION	DATE



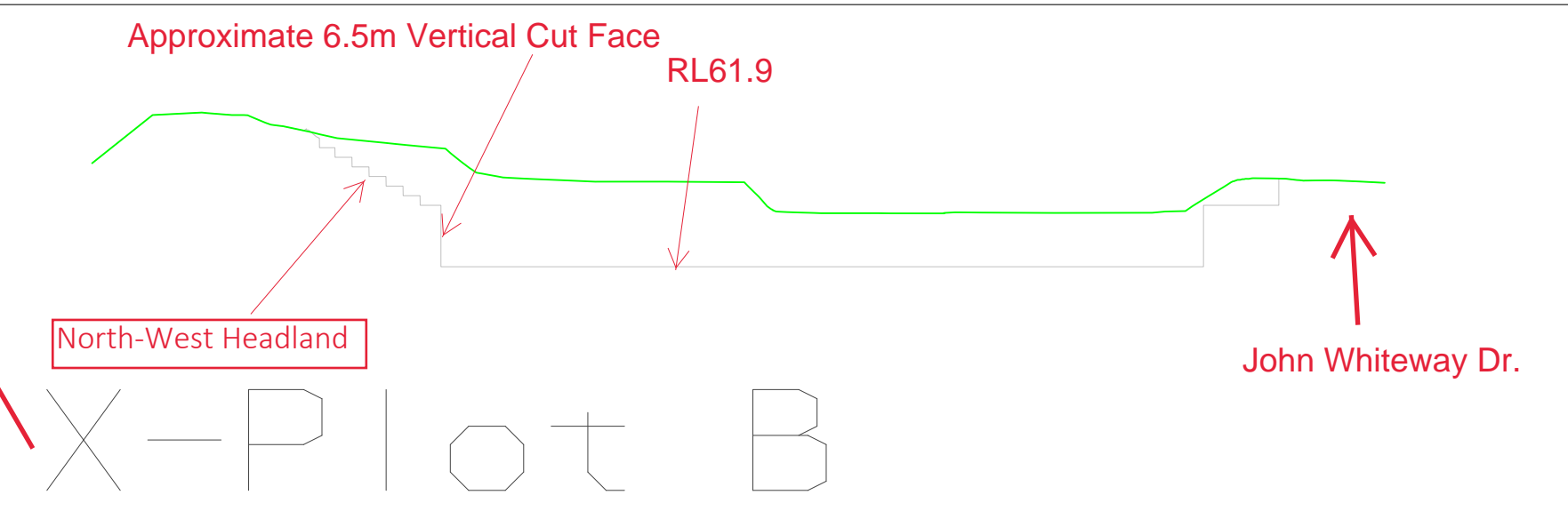
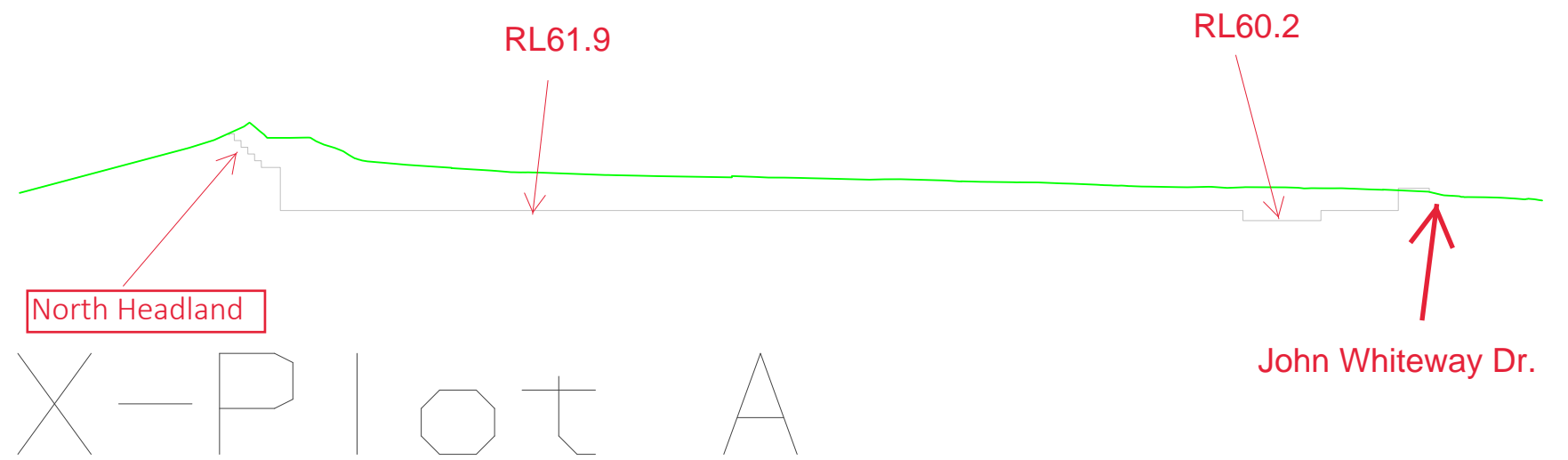
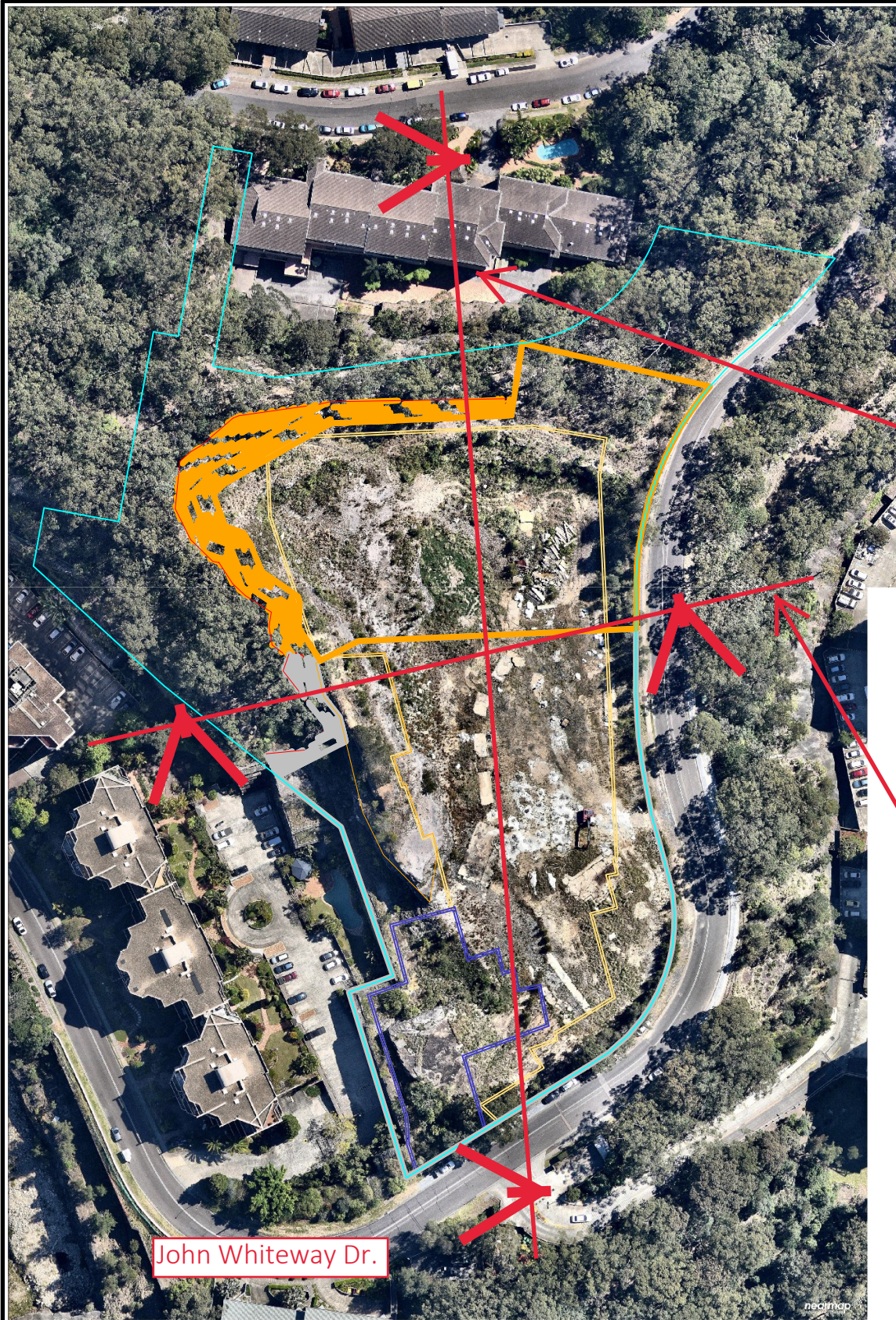
NOTES  
This Cut/Fill Plan is a rough outlook.  
Design Levels are not accurate.  
Limited information provided.

DESIGNED / DRAWN RM	DATE 27/11/19
SURVEYED	DATE
SCALE 1 : -1	DATUM

CLIENT <i>ADG Architects</i>
PROJECT 87-89 John Whiteway Dr. Wyong

DRAWING TITLE Cut - Fill Plan 1.5m Inc.
CAD FILE N/A
PROJECT/JOB No. 2879-05
DRAWING No.





**Notes:**

1. Levels shown are Bulk Earthworks Levels and reflect Basement Slab thickness of 200mm.

2. Basement walls extended outwards by 600mm to allow for Retaining Wall system and subsoil drainage.

ISSUES / AMENDMENTS		
REV.	DESCRIPTION	DATE



NOTES

This Cut/Fill Plan is a rough outlook.  
Design Levels are not accurate.  
Limited information provided.

DESIGNED / DRAWN RM	DATE 27/11/19
SURVEYED	DATE
SCALE 1 : -1	DATUM

CLIENT <i>ADG Architects</i>
PROJECT 87-89 John Whiteway Dr. Wyong

DRAWING TITLE Cut - Fill Plan 1.5m Inc.
CAD FILE N/A
PROJECT/JOB No. 2879-05
DRAWING No.

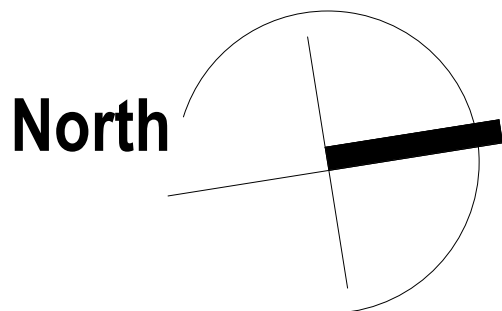




- KEY:
- EXTENT OF BATTER AREA
  - EXTENT OF BASEMENT CUT (RL 60.40 AND RL 61.90)
  - OVER EXCAVATION OUTLINE AREA
  - BUILDING FOOTPRINT ABOVE BASEMENT
  - NON-BUILDABLE ZONE
  - TOP EDGE OF QUARRY FACE (APPROX)
  - BASEMENT CUT OUTLINE AREA

- LEGEND:
- SITE BOUNDARY LINE
  - SETBACKS
  - APZ SETBACKS
  - NON-BUILDABLE AREA

1 CUT AND FILL DIAGRAM - IMPACT ANALYSIS PLAN  
DA003.1 1:500



12	RFI SUBMISSION	26.07.21	JS	JS
11	RTS RESUBMISSION	27.05.21	JS	PL
10	SSD DA RESUBMISSION	19.03.21	JS	PL
9	SSD DA RESUBMISSION (DRAFT)	26.02.21	JS	PL
8	ISSUE FOR CONSULTANT	16.02.20	JS	PL
7	SSD DA RESUBMISSION	25.08.20	JS	PL
6	ISSUE FOR CONSULTANT/RESPONSE TO SUBMISSION (3rd)	16.07.20	JS	PL,SC
5	RESPONSE TO SUBMISSIONS (2nd)	14.07.20	JS	PL,SC
Rev.	Description	Date	Chk	Drw

**ADG**architects

Suite 3.04, Level 3, 107-109 Mann St, Gosford NSW 2250  
Postal Address P.O. BOX 457 Gosford NSW 2250  
ph: 02 4312 5110 fax: 02 4312 3113  
e: info@adgarchitects.com.au



Client  
**JWD DEVELOPMENTS PTY LTD**

Title  
**CUT AND FILL DIAGRAMS**

Project  
**87 - 89 JOHN WHITEWAY DRIVE**

Location  
**87 - 89 JOHN WHITEWAY DRIVE,  
GOSFORD, NSW, 2250**

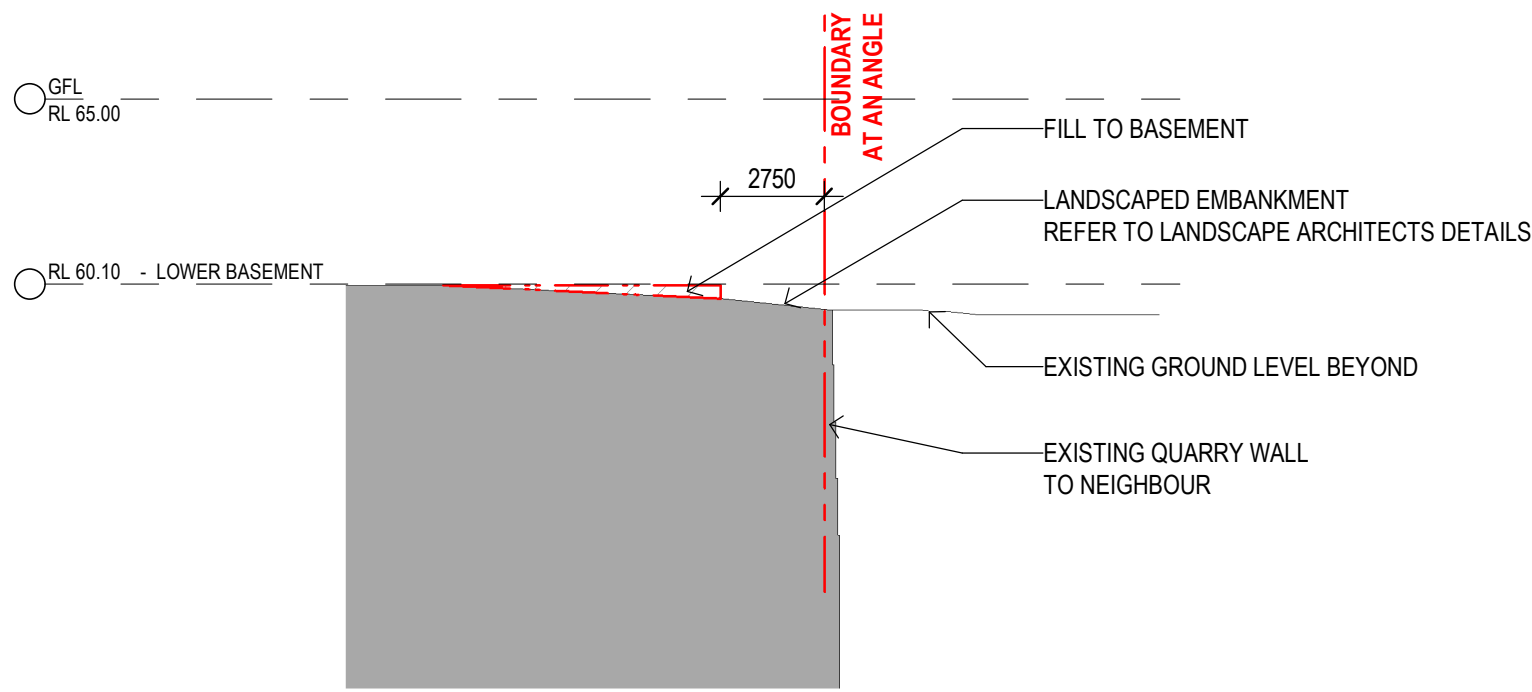
Do not scale drawings. Use figured dimensions only. Check and verify levels and dimensions on site prior to commencement of any work, the fabrication of shop drawings or the fabrication of components.  
This drawing is the copyright of ADG Architects and is protected under the Copyright Act 1968. It may not be altered, reproduced or transmitted in any form or by any means without the express permission of ADG Architects.

**SSD DA SUBMISSION**  
NOT TO BE USED DURING CONSTRUCTION

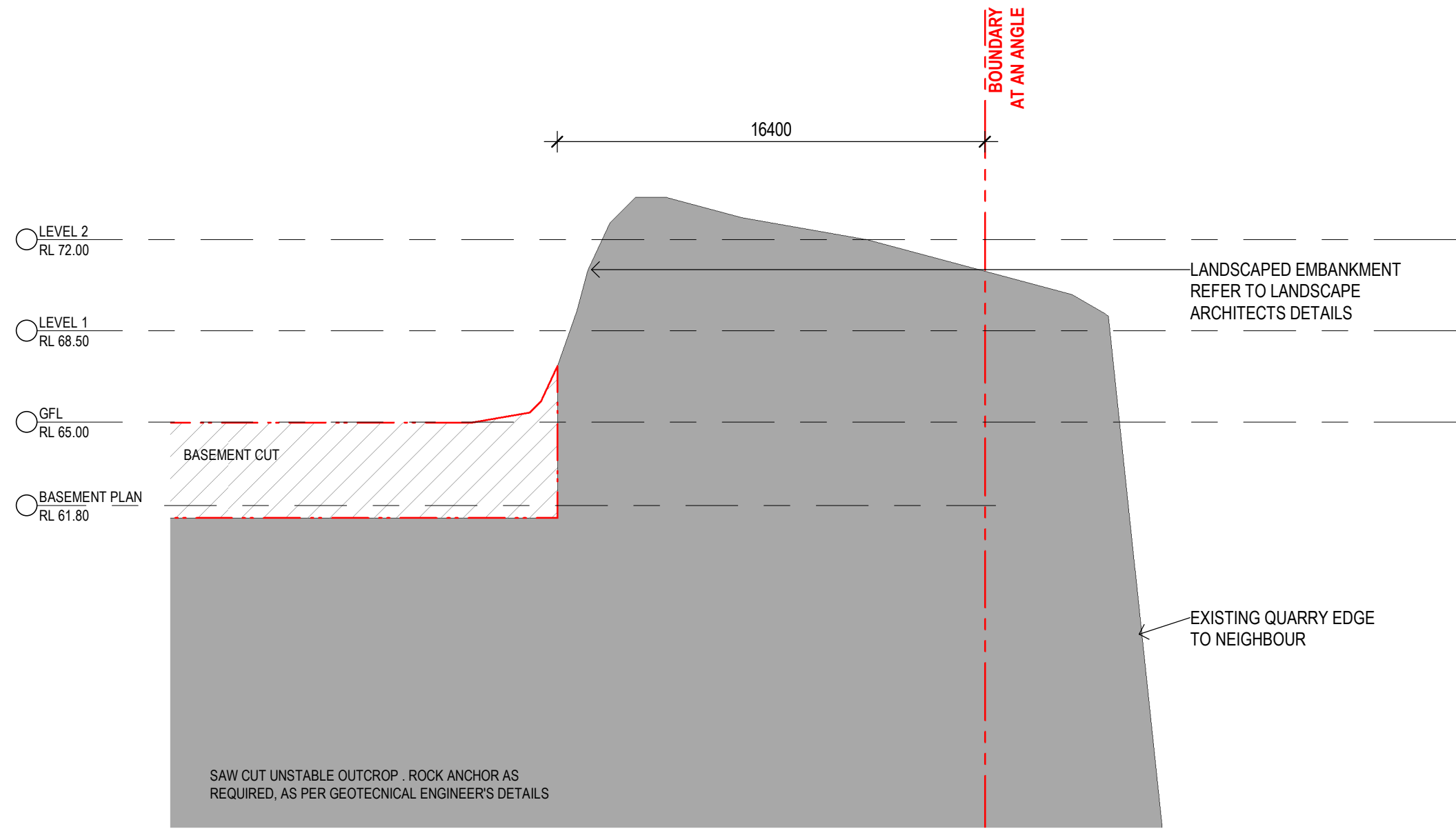
Project Number	Drawing Number	Rev
19002	DA005.9	12
Coordinator : Approver	Checked : Checker	
Scale: As indicated @ A1	Date Printed: 5/08/2021 2:28:43 PM	
File Name:		



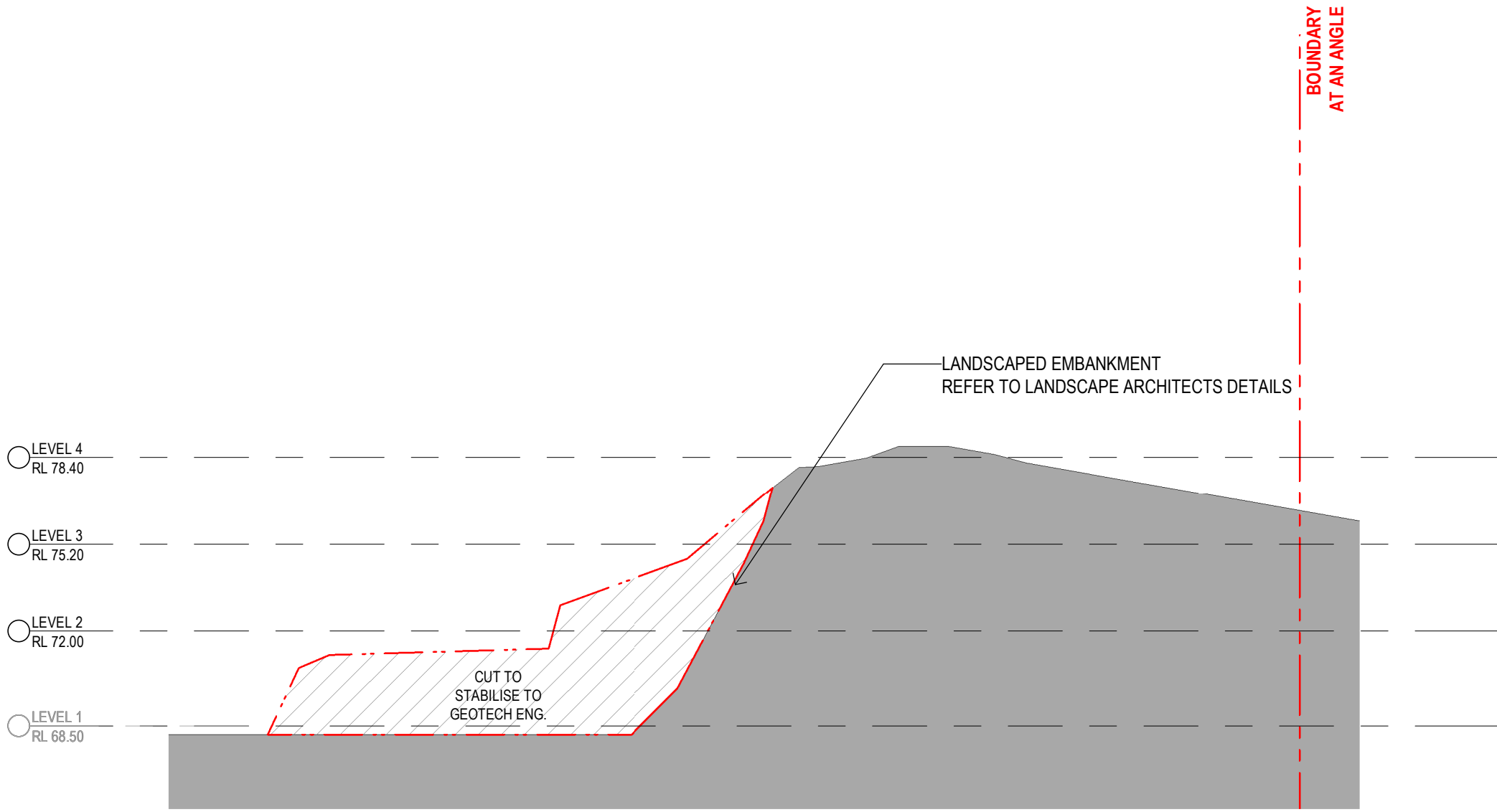
Printed From: C:\Users\johann@adg\OneDrive - ADG Architects\Desktop\ADG988\_JWD988 John Whiteway Drive\_DA\_Central\_detailed.rvt



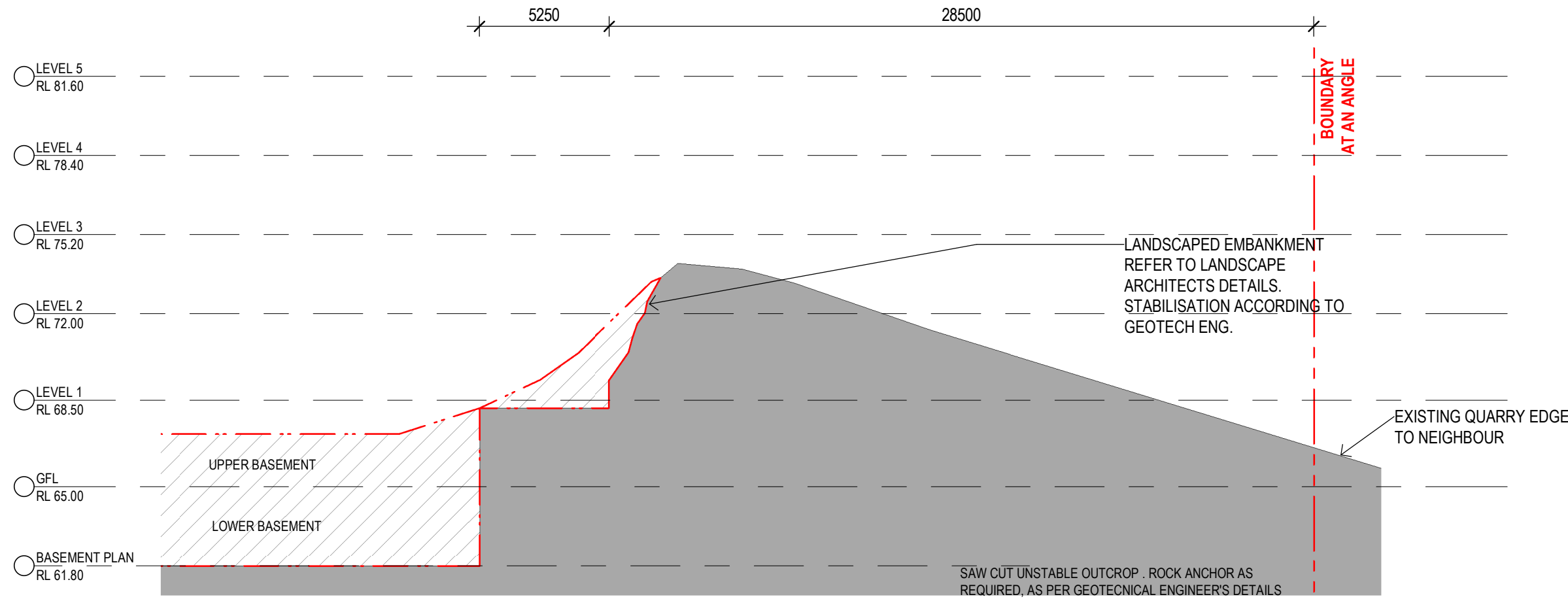
7 CUT AND FILL G-G  
DA002.1 1:200



9 CUT AND FILL I-I  
DA005.3 1:200



8 CUT AND FILL H-H  
SK02 1:200



CUT  
REFER TO GEOTECHNICAL  
ENGINEER'S DETAILS

LANDSCAPED EMBANKMENT  
REFER TO LANDSCAPE  
ARCHITECTS DETAILS

NOTE: CUT & FILL IS INDICATIVE ONLY AND  
HAS TO BE DETERMINED DURING  
CONSTRUCTION ACCORDING TO  
GEOTECHNICAL ENGINEER

10 CUT AND FILL J-J  
1:200

Rev.	Description	Date	Chk	Drw
12	RFI SUBMISSION	26.07.21	JS	JS
11	RTS RESUBMISSION	27.05.21	JS	PL
10	SSD DA RESUBMISSION	19.03.21	JS	PL
9	SSD DA RESUBMISSION (DRAFT)	26.02.21	JS	PL
8	ISSUE FOR CONSULTANT	16.02.20	JS	PL
7	SSD DA RESUBMISSION	25.08.20	JS	PL
6	ISSUE FOR CONSULTANT/RESPONSE TO SUBMISSION (3rd)	16.07.20	JS	PL,SC
5	RESPONSE TO SUBMISSIONS (2nd)	14.07.20	JS	PL,SC

**ADG**architects

Suite 3.04, Level 3, 107-109 Mann St, Gosford NSW 2250  
Postal Address P.O. BOX 457 Gosford NSW 2250  
ph: 02 4312 5110 fax: 02 4312 3113  
e: info@adgarchitects.com.au



Client  
**JWD DEVELOPMENTS PTY LTD**

Title  
**CUT AND FILL DIAGRAMS**

Project  
**87 - 89 JOHN WHITEWAY DRIVE**

Location  
**87 - 89 JOHN WHITEWAY DRIVE,  
GOSFORD, NSW, 2250**

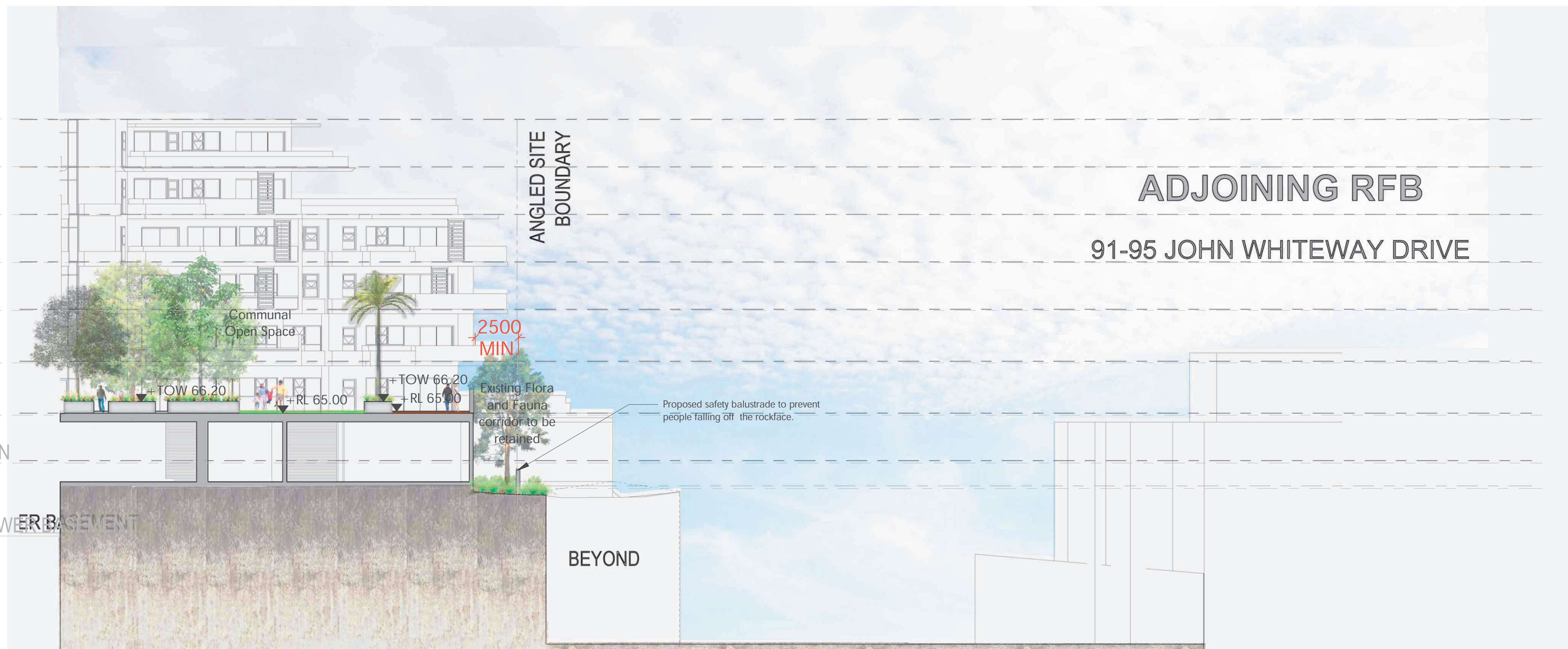
Do not scale drawings. Use figured dimensions only. Check and verify levels and dimensions on site prior to commencement of any work, the fabrication of shop drawings or the fabrication of components.  
This drawing is the copyright of ADG Architects and is protected under the Copyright Act 1968. It may not be altered, reproduced or transmitted in any form or by any means without the express permission of ADG Architects.

**SSD DA SUBMISSION**  
NOT TO BE USED DURING CONSTRUCTION

Project Number	Drawing Number	Rev
19002	DA005.10	12
Coordinator : Approver	Checked : Checker	
Scale: As indicated @ A1	Date Printed: 26/07/2021 2:10:22 PM	
File Name:		

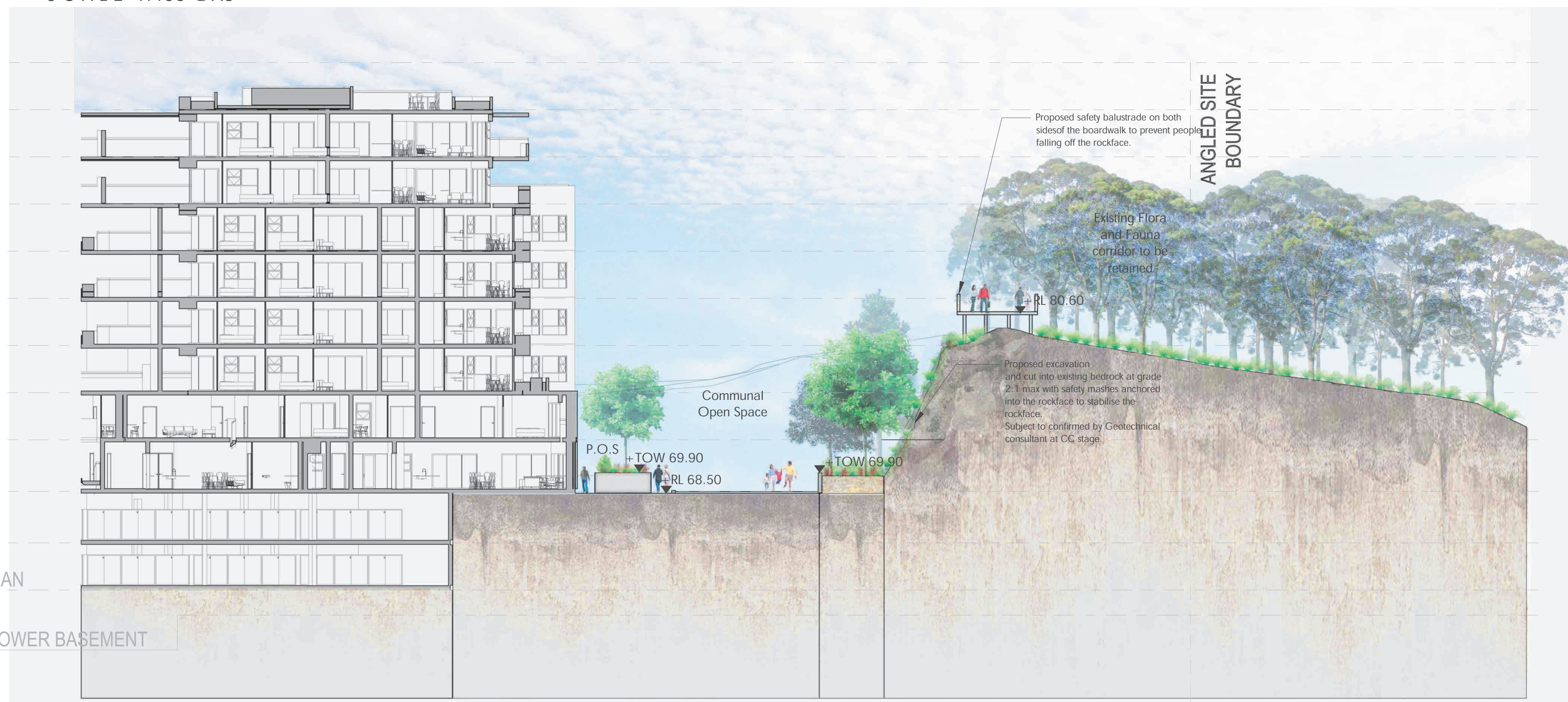


- LEVEL 6  
RL 84.80
- LEVEL 5  
RL 81.60
- LEVEL 4  
RL 78.40
- LEVEL 3  
RL 75.20
- LEVEL 2  
RL 72.00
- LEVEL 1  
RL 68.50
- GFL  
RL 65.00
- BASEMENT PLAN  
RL 61.80
- RL 60.10 - LOWER BASEMENT



SECTION GG  
SCALE 1:400 @A3

- LEVEL 10  
RL 97.60
- LEVEL 9  
RL 94.40
- LEVEL 8  
RL 91.20
- LEVEL 7  
RL 88.00
- LEVEL 6  
RL 84.80
- LEVEL 5  
RL 81.60
- LEVEL 4  
RL 78.40
- LEVEL 3  
RL 75.20
- LEVEL 2  
RL 72.00
- LEVEL 1  
RL 68.50
- GFL  
RL 65.00
- BASEMENT PLAN  
RL 61.80
- RL 60.10 - LOWER BASEMENT



SECTION HH  
SCALE 1:400 @A3

Rev:	Revision note:	Date:	Dwn by:
E	FOR DA APPROVAL	14.02.20	LZ
F	FOR DA APPROVAL	20.02.20	LZ
G	AMENDMENTS FOR DA APPROVAL	22.06.20	PG/LZ
H	AMENDMENTS FOR DA APPROVAL	17.07.20	PG/LZ
I	AMENDMENTS FOR DA APPROVAL	06.08.20	PG/LZ
J	AMENDMENTS FOR DA APPROVAL	07.08.20	PG/LZ
K	AMENDMENTS FOR DA APPROVAL	21.08.20	LZ
L	AMENDMENTS FOR DA APPROVAL	14.09.20	PG
M	AMENDMENTS FOR DA APPROVAL	19.10.20	JG/LZ
N	AMENDMENTS FOR DA APPROVAL	11.02.21	LZ
O	AMENDMENTS FOR DA APPROVAL	27.05.21	PG/LZ







SECTION II  
SCALE 1:400 @A3



Indicative imagery for potential design outcome of the rockface stabilisation.

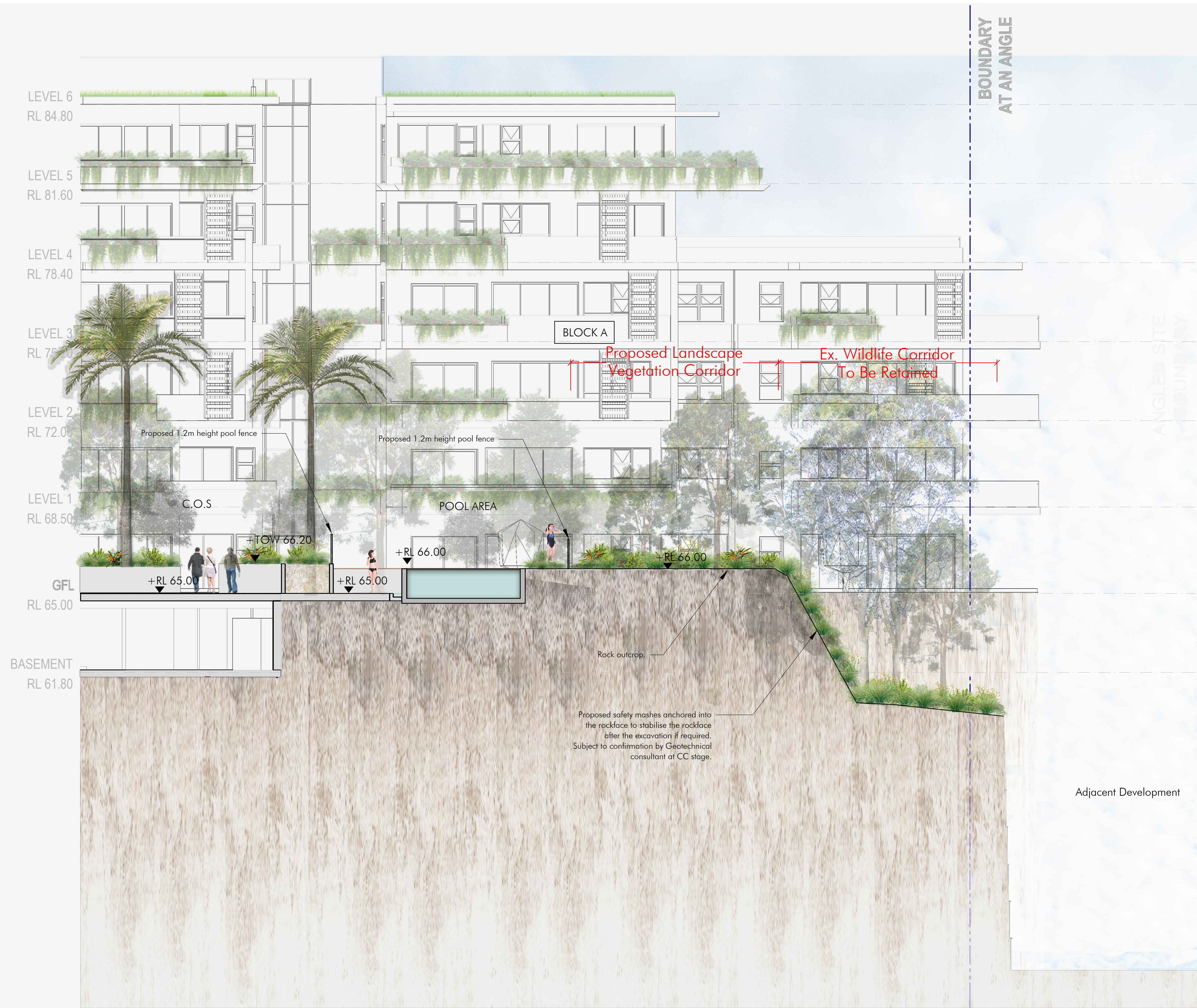


- LEVEL 11  
RL 100.80
- LEVEL 10  
RL 97.60
- LEVEL 9  
RL 94.40
- LEVEL 8  
RL 91.20
- LEVEL 7  
RL 88.00
- LEVEL 6  
RL 84.80
- LEVEL 5  
RL 81.60
- LEVEL 4  
RL 78.40
- LEVEL 3  
RL 75.20
- LEVEL 2  
RL 72.00
- LEVEL 1  
RL 68.50
- GFL  
RL 65.00
- BASEMENT PLAN  
RL 61.80
- RL 60.10 - LOWER BASEMENT



SECTION JJ  
SCALE 1:400 @A3





SECTION KK  
SCALE 1:200 @A3

Rev:	Revision note:	Date:	Dwn by:
F	FOR DA APPROVAL	20.02.20	LZ
G	AMENDMENTS FOR DA APPROVAL	22.06.20	PG/LZ
H	AMENDMENTS FOR DA APPROVAL	17.07.20	PG/LZ
I	AMENDMENTS FOR DA APPROVAL	06.08.20	PG/LZ
J	AMENDMENTS FOR DA APPROVAL	07.08.20	PG/LZ
K	AMENDMENTS FOR DA APPROVAL	21.08.20	LZ
L	AMENDMENTS FOR DA APPROVAL	14.09.20	PG
M	AMENDMENTS FOR DA APPROVAL	19.10.20	JG/LZ
N	AMENDMENTS FOR DA APPROVAL	11.02.21	LZ
O	AMENDMENTS FOR DA APPROVAL	27.05.21	PG/LZ
P	AMENDMENTS FOR DA APPROVAL	10.08.21	LZ



Project Title:  
**John Whiteway Drive JWD Development Gosford**  
Project Address:  
**89 John Whiteway Drive, Gosford**  
Drawing Title:  
**ADDENDUM - LANDSCAPE SECTIONS 04**

Location of all services is to be carried out by all contractors prior to commencement of works. Please Dial-Before-You-Dig. P1: 1100. Refer plans by Architect, Engineers & Surveyors for other working drawings. Information on Distinctive plans is for reference & coordination only. This drawings are to be read in conjunction with prepared specifications & details. It is the responsibility of the contractor to notify Distinctive of any contradiction within the plans & receive appropriate direction prior to construction works. Final layout is to be determined on site and at the direction of the site supervisor. Plans are copyright to Distinctive Gardens & Interiors Pty Ltd.

Scale @ A1/A3: AS SHOWN  
Client: JWD Developments Pty Ltd

Drawing Date: 10.08.21  
Drawn/Checked: JG/LZ/PG/GW/MS/DB  
Drawing Status: DA

Project Number: 10-19  
Drawing Number: 10-19.85  
Issue: P





SECTION LL  
SCALE 1:200 @A3

Rev:	Revision note:	Date:	Dwn by:
F	FOR DA APPROVAL	20.02.20	LZ
G	AMENDMENTS FOR DA APPROVAL	22.06.20	PG/LZ
H	AMENDMENTS FOR DA APPROVAL	17.07.20	PG/LZ
I	AMENDMENTS FOR DA APPROVAL	06.08.20	PG/LZ
J	AMENDMENTS FOR DA APPROVAL	07.08.20	PG/LZ
K	AMENDMENTS FOR DA APPROVAL	21.08.20	LZ
L	AMENDMENTS FOR DA APPROVAL	14.09.20	PG
M	AMENDMENTS FOR DA APPROVAL	19.10.20	JG/LZ
N	AMENDMENTS FOR DA APPROVAL	11.02.21	LZ
O	AMENDMENTS FOR DA APPROVAL	27.05.21	PG/LZ
P	AMENDMENTS FOR DA APPROVAL	10.08.21	LZ







SECTION MM  
SCALE 1:200 @A3

Rev:	Revision note:	Date:	Dwn by:
F	FOR DA APPROVAL	20.02.20	LZ
G	AMENDMENTS FOR DA APPROVAL	22.06.20	PG/LZ
H	AMENDMENTS FOR DA APPROVAL	17.07.20	PG/LZ
I	AMENDMENTS FOR DA APPROVAL	06.08.20	PG/LZ
J	AMENDMENTS FOR DA APPROVAL	07.08.20	PG/LZ
K	AMENDMENTS FOR DA APPROVAL	21.08.20	LZ
L	AMENDMENTS FOR DA APPROVAL	14.09.20	PG
M	AMENDMENTS FOR DA APPROVAL	19.10.20	JG/LZ
N	AMENDMENTS FOR DA APPROVAL	11.02.21	LZ
O	AMENDMENTS FOR DA APPROVAL	27.05.21	PG/LZ
P	AMENDMENTS FOR DA APPROVAL	10.08.21	LZ

