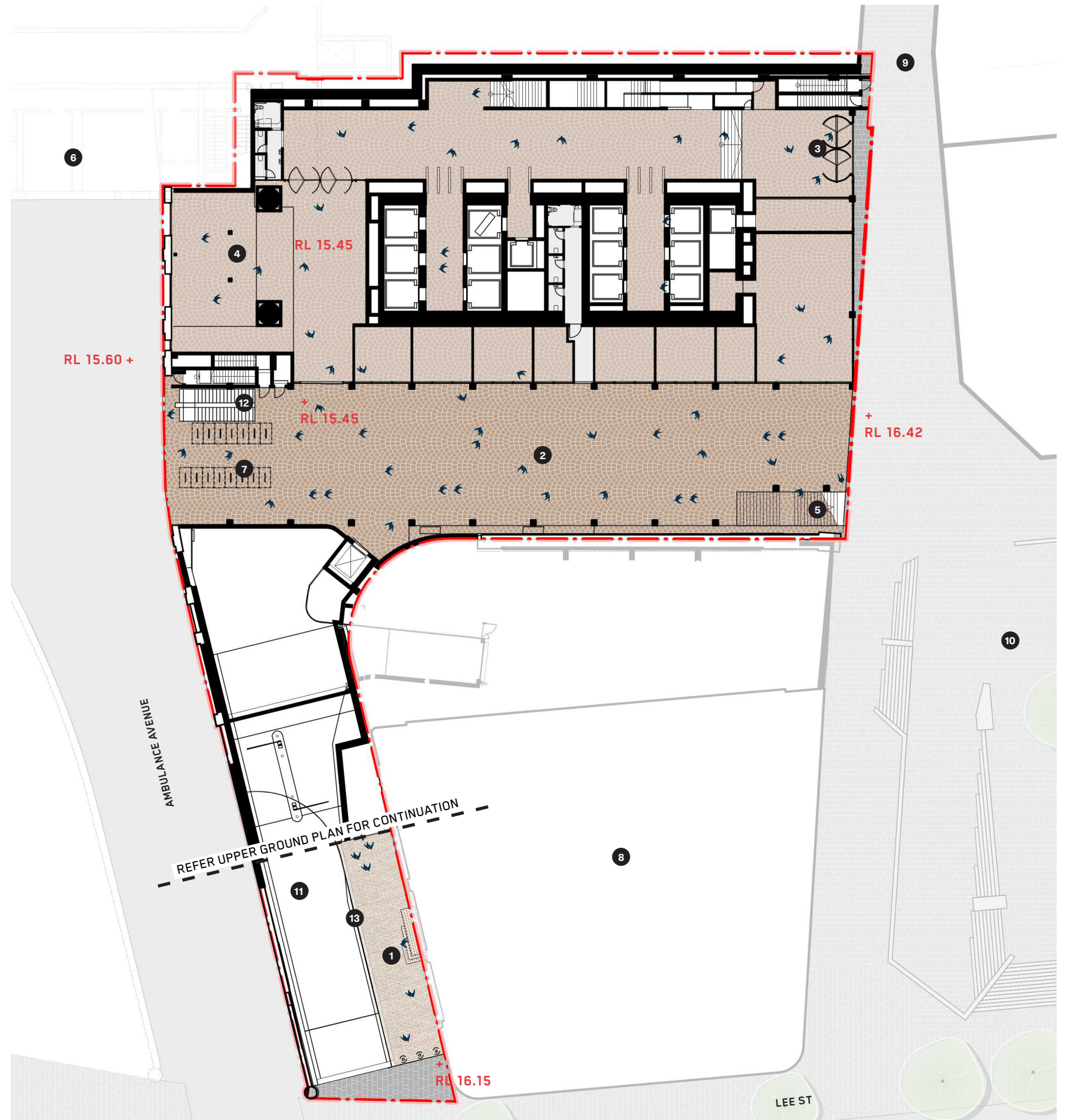


LEGEND

1	The Ramp
2	Lower Level Link Zone RL16 (not public in Day 1)
3	YHA main entrance
4	Atlassian lobby
5	Public stairs from Henry Deane Plaza to RL21 (Day 1)
6	Central Station
7	Visitor bike parking (Day 1)
8	Adina Hotel
9	Devonshire Street Tunnel
10	Henry Deane Plaza
11	Basement dive structure (Day 1)
12	Bike EOT facilities access stairs (Day 1)
13	Brick wall to dive structure (safety barrier)

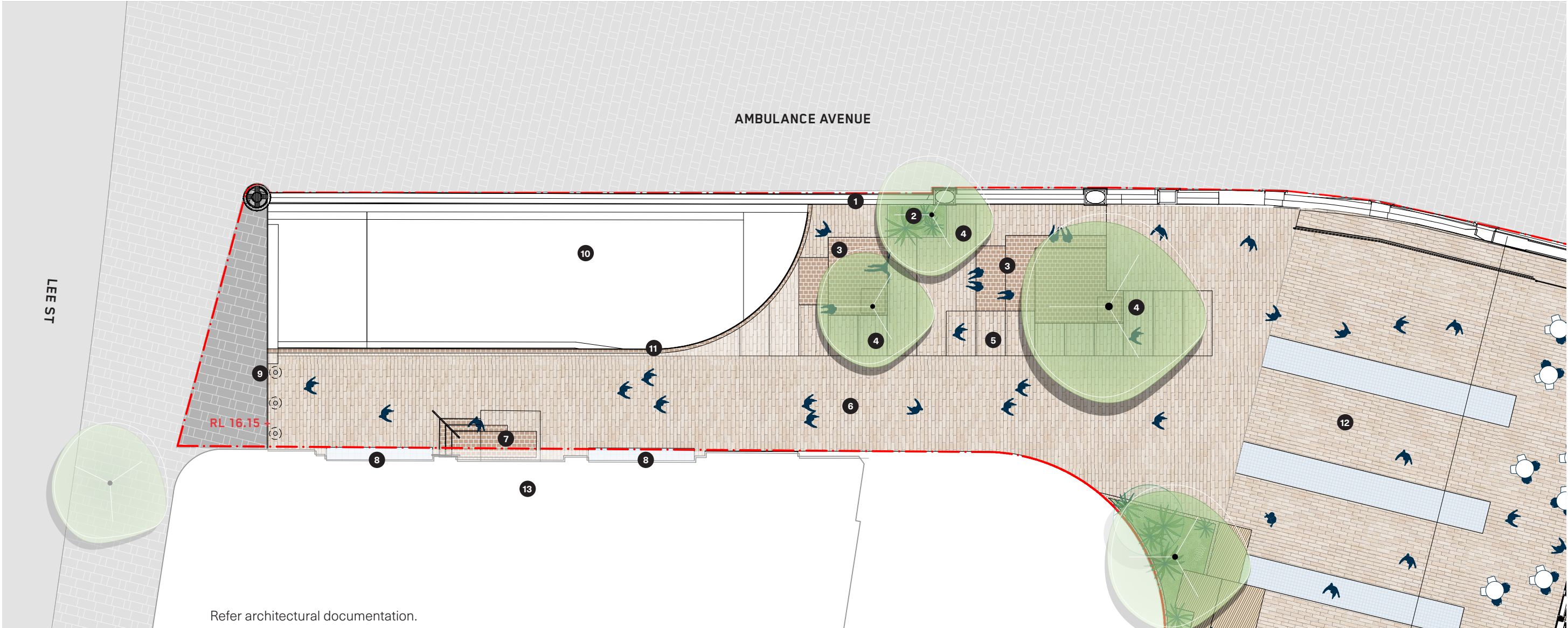
Refer architectural documentation.



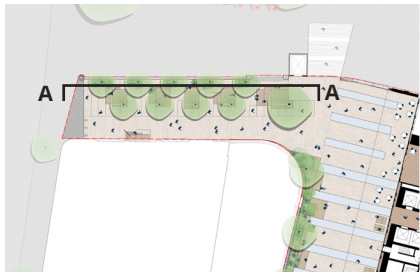
1	The Ramp
2	Upper Level Link Zone RL21
3	YHA Courtyard
4	Retail (potential) and informal spill-out under verandah
5	Landscaped Upper Level western edge
6	Shed roof eve line
7	Public stairs from Henry Deane Plaza to RL21 (Day 1)
8	Central Station
9	Basement dive structure (Day 1)
10	Adina Hotel
11	Dexus-Frasers Site
12	Henry Deane Plaza
13	Safety balustrade (refer architect's documentation)
14	Skylights - refer to architect's documentation
15	Heritage skylights - to be reinstated (refer Heritage Interpretation report)
16	Wind mitigation screen (refer architect's documentation)

DWG NO. : SYD2022-SSDADA2
REV: I

LEGEND	
1	Heritage wall
2	Low planting
3	Raised masonry seating platforms with opportunities for heritage interpretation
4	Small native canopy trees
5	Wide stairs
6	Ramp (slope > 1 in 10)
7	Adina Hotel main entry
8	Heritage skylights - to be reinstated (refer Heritage Interpretation report). Skylights to be coordinated with ramp levels and gradient
9	Hydraulic bollards
10	Basement dive structure
11	Brick wall to dive structure (safety barrier)
12	Upper Ground Link Zone (RL21)
13	Adina Hotel

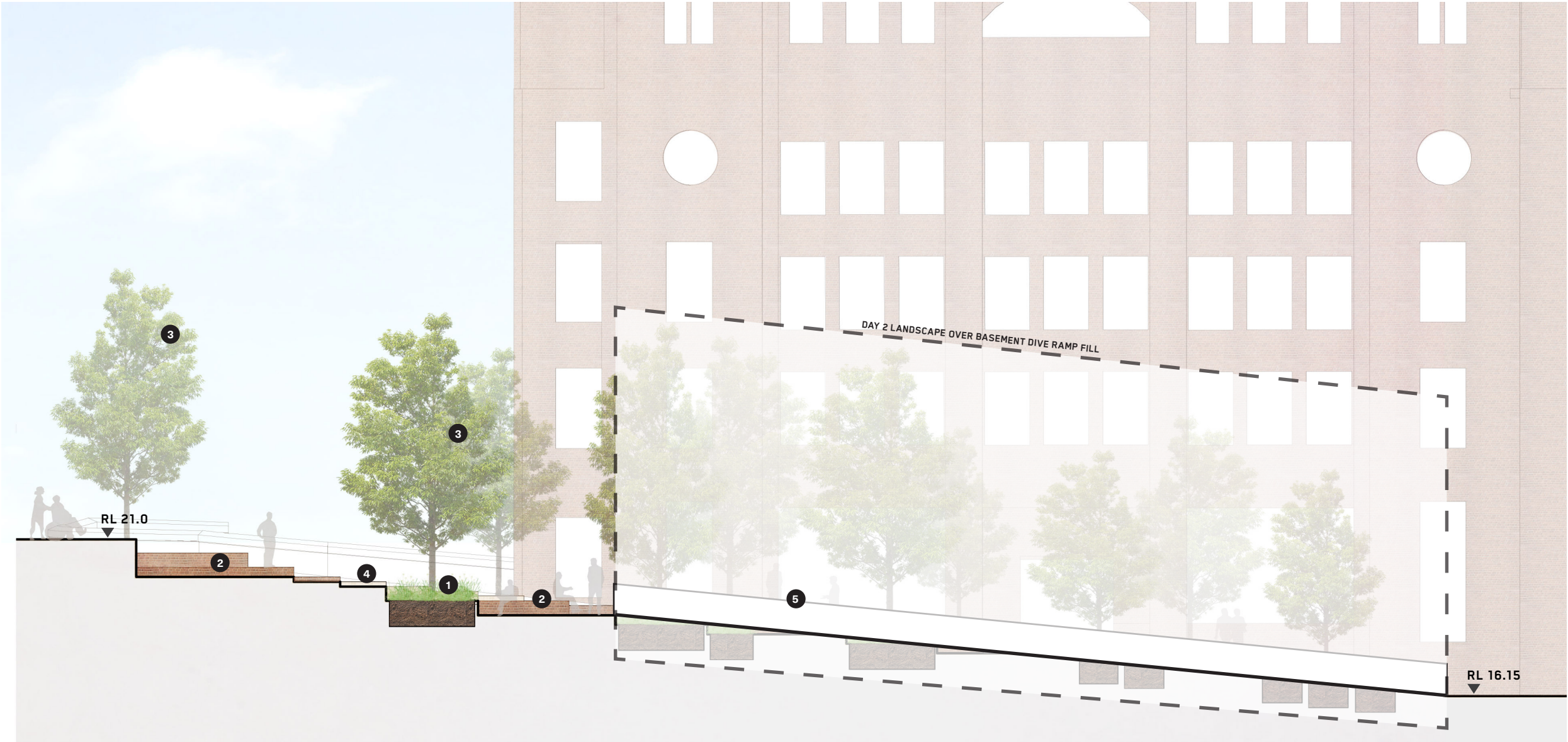


KEY PLAN



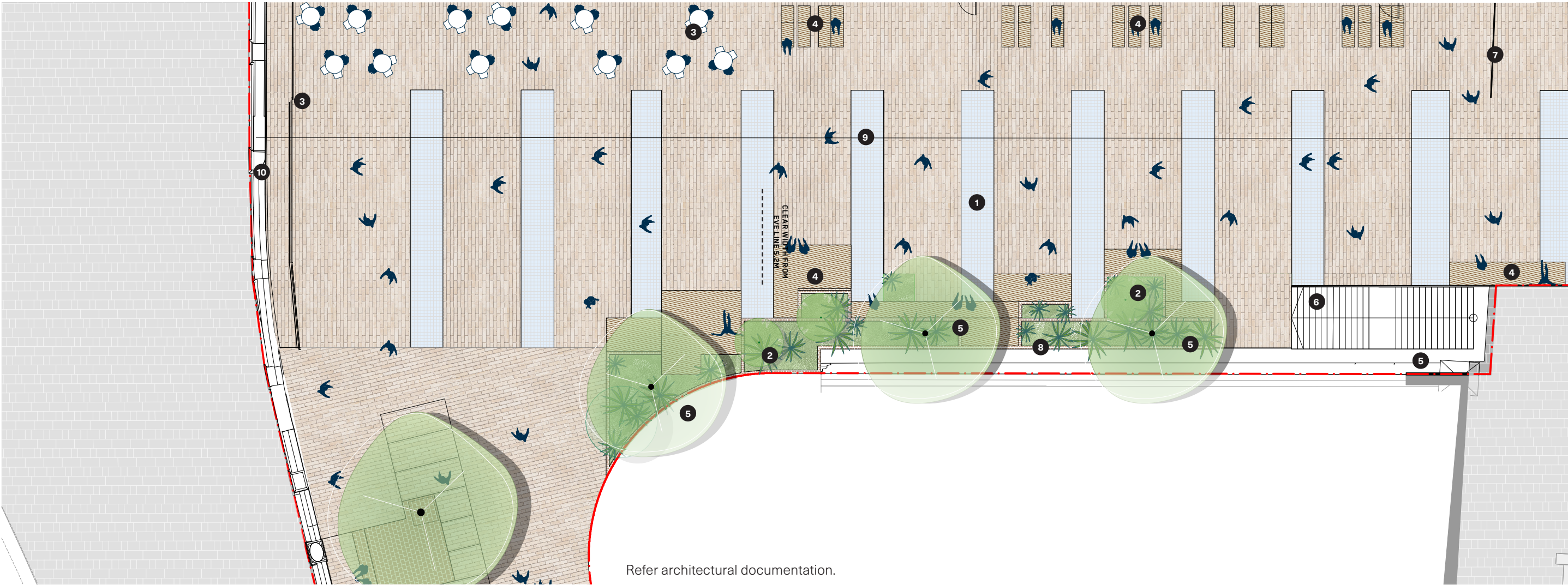
LEGEND

1	Low planting
2	Raised masonry seating platforms with opportunities for heritage interpretation
3	Small native canopy trees
4	Wide stairs
5	Brick wall to dive structure (safety barrier)

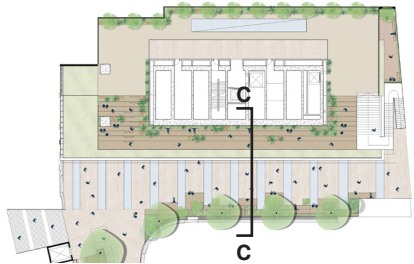


LEGEND

1	Skylights - refer to architect's documentation
2	Planted western edge
3	Licensed seating area
4	Public seating area
5	Small native canopy trees
6	Stair connection from Henry Deane Plaza (Day 1)
7	Wind mitigation screen
8	Safety balustrade & void to Lower Ground Link Zone
9	Shed roof eve line
10	Safety Balustrade / wind mitigation screen (refer Architect's documentation)



KEY PLAN



LEGEND

- | | |
|----|--|
| 1 | Extensive green roof system, minimum soil depth 200mm |
| 2 | Large shrubs / small trees, minimum soil depth 800mm |
| 3 | Shrubs, minimum soil depth 500-600mm |
| 4 | Climbing plants, minimum soil depth 500-600mm |
| 5 | Small native canopy trees |
| 6 | Timber decks |
| 7 | Heritage wall to Adina Hotel |
| 8 | Heritage shed building |
| 9 | Safety balustrade (refer to architect's documentation) |
| 10 | Void to Lower Ground Link Zone |





LEGEND	
1	YHA Courtyard
2	Shrubs and climbers to perimeter wall and fence, minimum soil depth 500-600mm
3	Small native canopy tree
4	Seating
5	Entry
6	Stairs to OSD Shed Roof

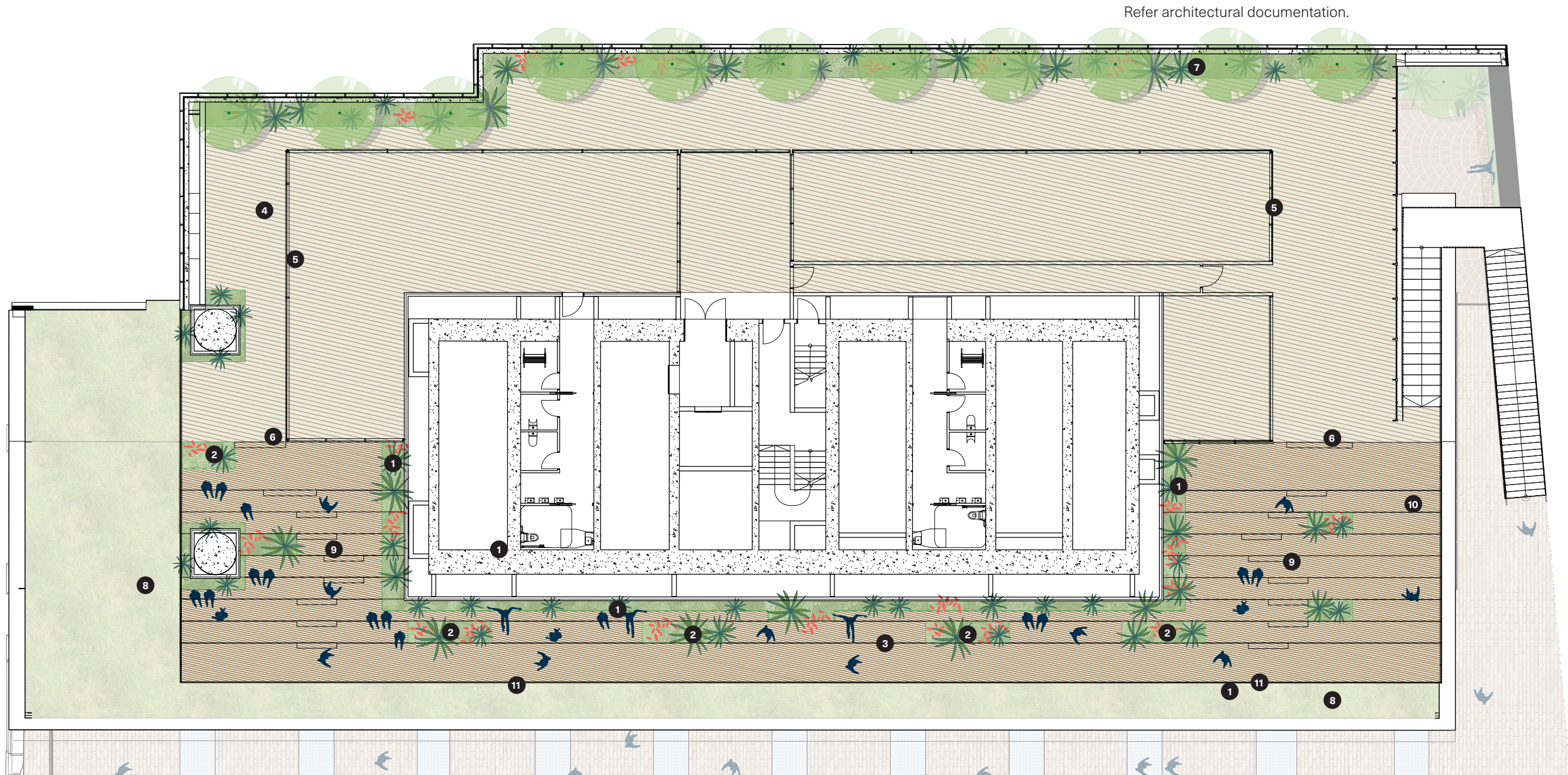
Refer architectural documentation.

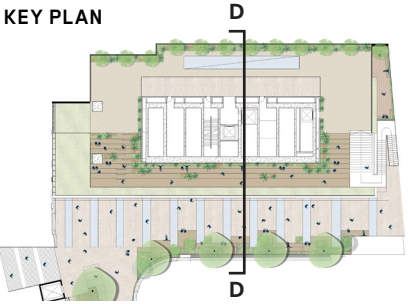
LEGEND

1	Climbing plants to tower core and mega-columns
2	Shrub planting
3	Timber bleachers
4	Upper deck (retail spill-out)
5	Planted canopy over deck (refer to architect's documentation)
6	Controlled access to bleachers
7	Raised planted edge with screen planting
8	Extensive green roof
9	Bleacher access stairs
10	Access stairs from Upper Ground Link Zone
11	Balustrade 'palisade' (refer to architect's documentation)

Notes:

- The extensive Green Roof system is proposed to be a 'Junglefy Biodiversity Green Roof' and will include stabilisation, sub soil irrigation and will require no mulch.
- The growing media will be made up of an A & B horizon for all other areas with the top 400mm being the A Horizon.
- The irrigation system will be a drip irrigation system that sits sub surface within the growing media. We chose this system as it
- The Green wall is proposed to be a Junglefy Green Wall/Breathing Wall to ensure a large variety of plants can grow in the lower light conditions.





LEGEND

1	Extensive green roof system, minimum soil depth 200mm
2	Large shrubs / small trees, minimum soil depth 800mm
3	Shrubs, minimum soil depth 500-600mm
4	Climbing plants, minimum soil depth 500-600mm
5	Small native canopy trees
6	Screen planting (Syzgium sp.)
7	Timber decks
8	Heritage wall to Adina Hotel
9	Heritage shed building
10	Canopy with extensive green roof,, minimum soil depth 200mm
11	Lower Ground Link Zone (RL16)
12	Void to Lower Ground Link Zone

